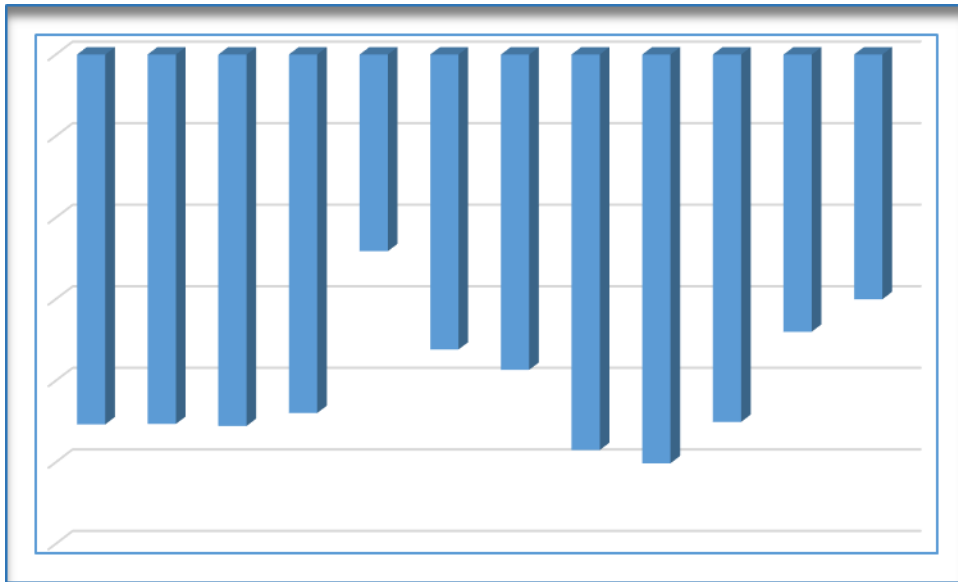




CENTRAL BANK OF LIBERIA



Liberia Financial STATISTICS

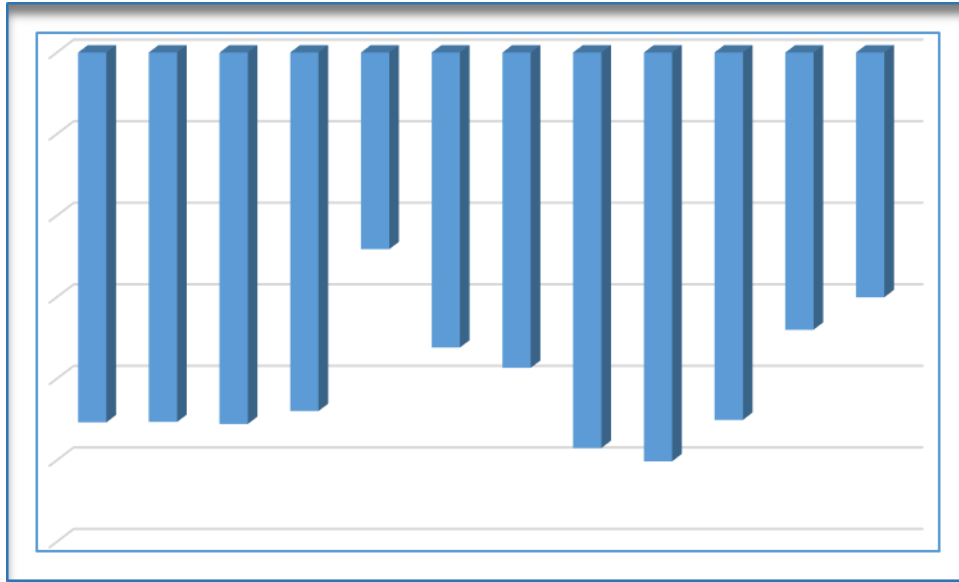
Vol. 19 No. 3

May – June, 2017

Research, Policy and Planning Department
Monrovia, Liberia



CENTRAL BANK OF LIBERIA



Liberia Financial STATISTICS

THE LIBERIA FINANCIAL STATISTICS (LFS) is produced by the Bank's Research, Policy and Planning Department. Inquiries concerning this publication should be addressed to:

**The Director
Research, Policy and Planning Department
Central Bank of Liberia
Ashmun and Lynch Streets
P. O. Box 2048
Monrovia, Liberia**

**Telephone #s: 00(231/880-649-103/886-246-587
Fax #s: 00(231) 077059642
Swift: CBLRRLM**

Table of Contents

	INTRODUCTION	-i-
	Statistics.....	1 - 55
Ref. No.	Description of Statistics	Pages
1	MONEY AND BANKING.....	1 – 30
1.1a	Depository Corporations Survey –2015	1 – 2
1.1b	Depository Corporations Survey –2016	3- 4
1.1c	Depository Corporations Survey – 2017	5
1.2a	Sectoral Balance Sheet of Other Depository Corp. – 2015.....	6-7
1.2b	Sectoral Balance Sheet of Other Depository Corp. –2016.....	8-9
1.2c	Sectoral Balance Sheet of Other Depository Corp. –2017	10
1.3a	Sectoral Balance Sheet of Central Bank of Liberia. – 2015.....	11-12
1.3b	Sectoral Balance Sheet of Central Bank of Liberia – 2016.....	13-14
1.3c	Sectoral Balance Sheet of Central Bank of Liberia – 2017	15
1.4a	Commercial Banks’ Loans by Economic Sectors – 2015 & 2016.....	16-17
1.4b	Commercial Banks’ Loans by Economic Sectors – 2016	18-19
1.4c	Commercial Banks’ Loans by Economic Sectors – 2017.....	20
1.5	Commercial Banks’ Interest Rate – 2015-2017.....	21
1.6	Liberian Dollar Exchange Rates – Period Averages: 2015 – 2017.....	22
1.7	Liberian Dollar Exchange Rates –End of Period: 2015- 2017.....	23
1.8a	Liberian Dollar Exchange Rates (Jan.-Feb.) – 2017.....	24
1.8b	Liberian Dollar Exchange Rate (Mar.-Apr.) -2017	25
1.8c	Liberian Dollar Exchange Rate (May.-Jun.) -2017	26
1.9	Commercial Banks’ Inflows and Outflows: 2014 – 2016.....	27
1.10a	Central Bank of Liberia FX Auction – 2015 & 2016 & Jan.-Jun., 2017	28
1.10b	Central Bank Bills – 2015 – 2017	29
1.10c	Government of Liberia Treasury Bills Auction 2015-2016.....	29
1.10d	Government of Liberia Treasury Bills Auction 2016-2017.....	30
2	REAL SECTOR	31 – 45
2.1a	Harmonized Consumer Price Index – 2015.....	31
2.1b	Harmonized Consumer Price Index – 2016	32
2.1c	Harmonized Consumer Price Index – 2017	33
2.2a	HCPI Inflation Rates (Year-on-Year) – 2015 & 2016	34
2.2b	HCPI Inflation Rates (Year-on-Year) – 2017	35
2.3a	Key Output Volume – 2015.....	36-37
2.3b	Key Output Volume – 2016.....	38
2.4a	Key Output Value – 2016	39
2.4b	Key Output Value – 2017	40
2.5a	Key Output Value – 2015.....	41-42
2.5b	Key Output Value – 2016.....	43-44
2.5c	Key Output Value – 2017.....	45
3	GOVERNMENT FINANCE.....	46 -49
3.1	Government Revenue –2015 - 2017.....	46
3.2	Government Expenditure – 2015-2017.....	47-48
3.3	Liberia’s Overall Debt Position 2015 - 2017.....	49
4	EXTERNAL TRADE.....	50-55
4.1	Exports and Imports in CIF Values – 2015- 2017.....	50
4.1a	Commodity Composition of Exports Value – 2015	50
4.2a	Commodity Composition of Exports Values – 2016 & 2017.....	51
4.2b	Commodity Composition of Exports Value 2017.....	51
4.3	Commodity Composition of Exports Volume 2015	52
4.3a	Commodity Composition of Exports Volume 2016.....	52
4.3b	Commodity Composition of Exports Volume 2017.....	52
4.4	Commodity Composition of Imports in CIF Values	53-54
4.5	Volume of Imports of Petroleum Products – 2015.....	55
4.5a	Volume of Imports of Petroleum Products – 2016.....	55
4.5b	Volume of Imports of Petroleum Products – 2017.....	55

Introduction

Published bi-monthly, the Liberia Financial Statistics (LFS) is one of the primary sources of macroeconomic statistics covering the four (4) sectors of the Liberian economy, namely, monetary, fiscal, external and real. The information compiled in the LFS is used by both the public and private sectors, especially academicians, policy makers, students, local and international organizations, the business community, etc.

This Edition represents the Third (3rd) publication of the LFS in 2017, and contains statistical information ranging from January, 2015 to June, 2017. The graphs on the cover and inside pages illustrate the Liberian's monthly trade balance from July, 2016 to June, 2017.

The Management of the Central Bank of Liberia extends thanks and appreciation to all data providers who have been very contributive in making this publication a success. It is the Bank's ardent hope that this level of cooperation continues as we all strive in making the Liberian economy better.

MONEY AND BANKING

CENTRAL BANK OF LIBERIA

1.1a: Depository Corporations Survey - 2015

Millions of Liberian Dollars

	Jan-15	Feb-15	Mar-15	Apr-15	May-15	Jun-15
Foreign Assets (net)	37,872.47	42,769.44	38,946.65	35,970.37	37,682.71	37,834.76
Foreign Assets (MA)	45,252.76	49,026.39	47,305.96	45,212.01	46,095.29	46,203.77
(-) Foreign Liabilities (MA)	22,410.58	22,410.58	22,410.58	22,410.58	22,410.58	22,675.77
Foreign Assets (CoB)	17,644.50	18,849.34	17,160.98	16,244.60	16,794.81	17,058.47
(-) Foreign Liabilities (CoB)	2,614.21	2,695.72	3,109.71	3,075.65	2,796.81	2,751.71
Domestic Credit	46,259.98	46,170.20	45,103.69	44,933.27	44,762.10	46,809.96
Claims on General Government (net)	12,955.29	12,820.84	10,784.98	10,718.48	9,904.14	11,277.83
Claims on General Government (MA)	21,944.03	21,944.03	21,944.03	21,944.03	21,944.03	22,192.81
(-) General Government Deposits (MA)	11,697.31	11,777.04	13,794.10	12,768.09	13,623.08	13,781.17
Claims on General Government (CoB)	3,476.08	3,414.74	3,464.18	2,274.30	2,382.12	3,584.62
(-) General Government Deposits (CoB)	767.51	760.89	829.13	731.75	798.93	718.44
Claims on Public Corporations (MA)	-	-	-	-	-	-
Claims on Public Corporations (CoB)	1,870.16	1,807.18	1,931.39	1,975.41	2,034.36	2,136.66
Claims on Private Sector (MA)	270.88	292.97	304.04	309.76	303.33	310.73
Claims on Private Sector (CoB)	31,038.70	31,127.05	31,954.18	31,799.93	32,390.00	32,952.10
Claims on NBFIs (MA)	-	-	-	-	-	-
Claims on NBFIs (CoB)	124.95	122.16	129.10	129.68	130.28	132.65
Money	55,350.46	59,758.26	56,712.86	57,027.36	56,108.69	58,340.28
Currency Outside Banks (MA)	7,541.52	7,423.38	7,369.76	7,359.75	7,361.78	7,545.09
Liberian Currency in Circulation (MA)	9,317.65	8,880.28	8,772.52	8,783.83	8,798.33	8,941.88
(-) Currency Holdings (CoB)	1,776.13	1,456.90	1,402.76	1,424.08	1,436.54	1,396.79
Demand Deposits	31,274.09	30,859.22	30,775.58	31,346.14	30,160.70	31,522.11
Demand Deposits (MA)	1,932.71	1,602.08	1,584.78	1,479.63	1,457.22	990.01
Demand Deposits (CoB)	29,341.38	29,257.14	29,190.79	29,866.51	28,703.48	30,532.10
Other Deposits	16,534.85	21,475.66	18,567.53	18,321.47	18,586.20	19,273.08
Other Deposits (MA)	21.24	3,891.35	63.74	83.36	66.54	30.29
Time and Savings Deposits (CoB)	16,513.60	17,584.31	18,503.79	18,238.11	18,519.66	19,242.78
Bonds and Securities (CoB)	-	-	-	-	-	-
Restricted Deposits	10.86	10.86	10.86	10.86	19.41	19.41
Capital Accounts	29,927.99	29,971.41	30,486.21	30,229.65	29,732.19	28,968.92
Capital Accounts (MA)	16,241.23	16,230.38	16,256.83	15,982.85	15,902.52	15,824.09
Capital Accounts (CoB)	13,686.76	13,741.03	14,229.38	14,246.80	13,829.68	13,144.83
Other Items (net)	(1,135.62)	3,090.46	(3,095.86)	(6,280.87)	(3,348.93)	(2,653.60)
Unclassified Liabilities (MA)	17,978.92	17,797.97	17,780.51	16,836.63	16,829.71	17,236.74
(-) Unclassified Assets (MA)	20,428.28	20,540.87	20,649.29	20,799.16	20,919.93	21,131.87
(-) Unclassified Assets (CoB)	9,103.37	9,694.64	10,466.33	10,408.14	10,126.56	10,305.95
Unclassified Liabilities (CoB)	12,315.49	11,918.87	11,580.58	12,159.26	11,160.09	12,621.90
Commercial Banks' Deposits (MA)	10,893.54	11,515.96	12,000.39	12,363.42	13,050.31	13,245.03
(-) Reserves (CoB)	12,845.75	11,817.61	13,212.19	16,361.06	13,892.33	14,798.85
Currency Holdings (CoB)	1,776.13	1,456.90	1,402.76	1,424.08	1,436.54	1,396.79
Liabilities to Central Bank (CoB)	1,922.59	1,932.80	1,933.00	1,933.06	1,933.41	1,949.13
(-) Claims on Domestic Banks (MA)	2,588.63	2,287.64	2,449.79	2,434.38	2,867.72	2,877.74
(-) Claims on Central Bank of Liberia (CoB)	1,068.90	1,068.90	1,068.90	1,068.90	11.01	11.01
(-) Unbalanced Items	12.65	3,877.60	53.40	74.32	58.55	22.23
Vertical Check	0.00	0.00	0.00	0.00	0.00	0.00

NBFIs: Non-Bank Financial Institutions

Source : Central Bank of Liberia, Monrovia, Liberia.

MONEY AND BANKING

CENTRAL BANK OF LIBERIA

1.1a: Depository Corporations Survey - 2015 contd

Millions of Liberian Dollars

	Jul-15	Aug-15	Sep-15	Oct-15	Nov-15	Dec-15
Foreign Assets (net)	37,637.7	32,439.2	31,404.1	34,760.5	32,501.8	33,877.0
Foreign Assets (MA)	47,310.3	47,083.8	45,692.2	49,090.1	47,480.7	47,693.4
(-) Foreign Liabilities (MA)	23,206.9	23,472.1	23,471.4	23,206.2	23,206.2	23,471.4
Foreign Assets (CoB)	16,166.3	11,737.3	12,280.5	11,846.7	11,217.7	12,150.5
(-) Foreign Liabilities (CoB)	2,631.9	2,909.8	3,097.2	2,970.2	2,990.4	2,495.6
Domestic Credit	47,050.1	50,665.5	54,484.3	48,092.3	50,367.8	49,943.1
Claims on General Government (net)	10,707.1	12,646.7	15,719.6	9,413.9	11,251.5	10,652.5
Claims on General Government (MA)	22,690.4	22,939.2	22,939.2	22,690.4	22,690.4	22,939.2
(-) General Government Deposits (MA)	13,703.2	13,480.0	10,478.4	16,159.6	14,357.8	15,263.9
Claims on General Government (CoB)	2,510.0	4,096.9	4,077.2	3,889.4	3,855.6	3,809.8
(-) General Government Deposits (CoB)	790.1	909.4	818.4	1,006.3	936.7	832.5
Claims on Public Corporations (MA)	0.0	0.0	0.0	0.0	0.0	0.0
Claims on Public Corporations (CoB)	2,359.0	2,742.1	2,737.6	2,720.7	2,775.0	2,908.1
Claims on Private Sector (MA)	315.0	325.5	307.6	299.1	296.3	346.0
Claims on Private Sector (CoB)	33,534.3	34,813.1	35,578.6	35,507.4	35,847.0	35,837.0
Claims on NBFIs (MA)	0.0	0.0	0.0	0.0	0.0	0.0
Claims on NBFIs (CoB)	134.7	138.2	140.9	151.2	198.0	199.5
Money	59,723.38	59,851.74	61,456.2	59,334.1	59,770.5	61,498.9
Currency Outside Banks (MA)	8,133.64	7,847.22	8,094.0	8,325.2	8,620.2	9,656.2
Liberian Currency in Circulation (MA)	9,414.42	9,397.19	9,324.2	9,387.8	9,505.9	10,357.3
(-) Currency Holdings (CoB)	1,280.78	1,549.96	1,230.2	1,062.7	885.7	701.1
Demand Deposits	32,488.56	32,692.16	31,416.5	31,209.8	30,998.3	31,380.3
Demand Deposits (MA)	929.76	843.20	321.9	527.5	580.0	871.6
Demand Deposits (CoB)	31,558.81	31,848.96	31,094.6	30,682.3	30,418.3	31,380.3
Other Deposits	19,101.18	19,312.36	21,945.7	19,799.2	20,152.0	19,590.8
Other Deposits (MA)	61.98	29.34	1,984.9	85.9	103.8	94.6
Time and Savings Deposits (CoB)	19,039.20	19,283.01	19,960.9	19,713.3	20,048.3	19,496.3
Bonds and Securities (CoB)	-	-	-	-	-	-
Restricted Deposits	19.41	19.41	19.4	19.4	19.4	16.9
Capital Accounts	30,029.35	29,907.20	29,827.4	29,251.8	28,819.3	27,318.3
Capital Accounts (MA)	16,424.56	16,065.36	15,900.4	15,394.3	15,289.9	15,127.8
Capital Accounts (CoB)	13,604.80	13,841.84	13,927.0	13,857.5	13,529.4	12,190.5
Other Items (net)	(5,022.34)	(6,644.29)	(3,429.8)	(5,666.6)	(5,635.8)	(4,919.4)
Unclassified Liabilities (MA)	16,256.16	18,074.56	18,107.6	17,937.1	17,947.1	18,170.7
(-) Unclassified Assets (MA)	21,557.74	21,793.08	21,794.0	21,580.5	21,570.0	21,686.0
(-) Unclassified Assets (CoB)	10,981.67	10,920.99	10,905.1	11,070.1	10,990.1	9,412.5
Unclassified Liabilities (CoB)	11,992.42	7,614.94	7,995.9	7,453.7	7,822.5	7,148.4
Commercial Banks' Deposits (MA)	15,029.36	13,181.93	13,567.8	13,348.6	13,536.0	11,811.1
(-) Reserves (CoB)	15,920.09	13,963.91	14,003.9	13,302.8	13,666.9	12,298.2
Currency Holdings (CoB)	1,280.78	1,549.96	1,230.2	1,062.7	885.7	701.1
Liabilities to Central Bank (CoB)	1,980.37	1,996.09	2,821.4	2,796.8	2,796.3	3,066.2
(-) Claims on Domestic Banks (MA)	3,144.93	2,392.90	2,414.3	2,377.8	2,479.9	2,494.6
(-) Claims on Central Bank of Liberia (CoB)	11.01	11.01	11.0	11.0	11.0	11.0
(-) Unbalanced Items	54.02	20.11	1,975.6	76.8	94.4	85.3
Vertical Check	0.00	0.00	(0.0)	0.0	(0.0)	0.0

NBFIs: Non-Bank Financial Institutions

Source: Central Bank of Liberia, Monrovia, Liberia.

MONEY AND BANKING

CENTRAL BANK OF LIBERIA

1.1b: Depository Corporations Survey - 2016

Millions of Liberian Dollars

	Jan-16	Feb-16	Mar-16	Apr-16	May-16	Jun-16
Foreign Assets (net)	32,464.4	29,793.0	31,008.6	32,654.5	32,703.5	37,052.3
Foreign Assets (MA)	48,957.7	47,149.2	46,677.2	48,322.2	49,649.9	53,288.9
(-) Foreign Liabilities (MA)	24,001.8	23,996.0	24,001.8	24,255.5	24,267.0	25,062.6
Foreign Assets (CoB)	10,207.7	8,978.4	10,415.1	10,774.5	9,693.9	11,155.6
(-) Foreign Liabilities (CoB)	2,699.1	2,338.6	2,082.0	2,186.8	2,373.3	2,329.7
Domestic Credit	50,795.5	54,156.6	51,733.7	56,437.0	55,967.1	57,578.2
Claims on General Government (net)	10,711.3	13,768.7	11,185.1	15,262.7	15,797.1	14,721.2
Claims on General Government (MA)	23,436.7	27,179.0	23,436.7	27,346.1	27,594.9	28,469.4
(-) General Government Deposits (MA)	15,584.5	14,738.7	13,780.6	13,398.9	13,616.9	13,783.2
Claims on General Government (CoB)	3,760.2	2,165.9	2,134.1	2,154.8	2,173.6	433.7
(-) General Government Deposits (CoB)	901.2	837.6	605.3	839.4	354.6	398.7
Claims on Public Corporations (MA)	0.0	0.0	0.0	0.0	0.0	0.0
Claims on Public Corporations (CoB)	4,050.5	4,247.5	4,036.8	4,222.7	4,212.2	4,243.3
Claims on Private Sector (MA)	351.1	352.2	364.3	364.3	1,623.5	1,574.4
Claims on Private Sector (CoB)	35,508.5	35,612.5	35,969.9	36,423.0	34,168.8	36,867.5
Claims on NBFIs (MA)	0.0	0.0	0.0	0.0	0.0	0.0
Claims on NBFIs (CoB)	174.1	175.7	177.6	164.2	165.5	171.7
Money	60,298.5	59,464.8	61,219.7	61,686.7	59,836.3	61,407.3
Currency Outside Banks (MA)	9,024.5	8,688.1	8,685.9	8,870.5	8,764.8	8,942.6
Liberian Currency in Circulation (MA)	10,235.5	10,122.8	10,097.5	10,097.5	10,006.6	9,925.2
(-) Currency Holdings (CoB)	1,211.0	1,434.7	1,411.5	1,227.0	1,241.9	982.5
Demand Deposits	31,475.5	30,466.2	32,234.5	31,744.4	30,322.8	31,351.5
Demand Deposits (MA)	908.6	620.6	571.7	596.8	755.6	740.7
Demand Deposits (CoB)	31,475.5	29,845.7	31,662.8	31,147.6	29,567.2	30,610.8
Other Deposits	19,798.5	20,310.5	20,299.3	21,071.8	20,748.7	21,113.1
Other Deposits (MA)	49.0	22.5	505.2	505.2	443.9	159.1
Time and Savings Deposits (CoB)	19,749.6	20,288.0	19,794.1	20,566.6	20,304.8	20,954.0
Bonds and Securities (CoB)	-	-	-	-	-	-
Restricted Deposits	16.9	16.9	16.9	16.3	16.3	16.3
Capital Accounts	28,569.0	28,098.1	27,857.6	28,487.8	27,340.7	28,397.4
Capital Accounts (MA)	15,642.8	15,182.2	15,034.4	14,921.9	14,149.5	14,694.0
Capital Accounts (CoB)	12,926.2	12,915.9	12,823.2	13,565.9	13,191.2	13,703.5
Other Items (net)	(5,575.5)	(3,607.6)	(5,846.7)	(594.1)	1,921.2	4,968.7
Unclassified Liabilities (MA)	18,708.5	21,079.5	16,992.7	21,128.9	41,628.9	43,938.3
(-) Unclassified Assets (MA)	22,138.5	22,139.6	22,218.9	22,410.4	39,916.6	41,140.0
(-) Unclassified Assets (CoB)	9,448.1	9,887.4	8,823.5	9,337.8	8,073.6	7,370.9
Unclassified Liabilities (CoB)	6,539.5	6,804.1	6,996.0	7,203.4	6,972.2	8,220.4
Commercial Banks' Deposits (MA)	12,244.4	11,932.8	14,009.3	16,202.2	15,299.1	18,631.6
(-) Reserves (CoB)	13,234.3	14,963.4	15,407.4	15,458.5	16,210.2	18,235.5
Currency Holdings (CoB)	1,211.0	1,434.7	1,411.5	1,227.0	1,241.9	982.5
Liabilities to Central Bank (CoB)	2,995.1	2,995.2	2,995.3	3,020.8	1,929.3	2,255.9
(-) Claims on Domestic Banks (MA)	2,482.6	2,697.6	2,287.6	2,655.5	1,374.1	2,443.8
(-) Claims on Central Bank of Liberia (CoB)	2,995.1	11.0	11.0	11.0	11.0	11.0
(-) Unbalanced Items	40.5	1,845.0	496.9	496.9	435.4	141.2
Vertical Check	(0.0)	0.0	0.0	(0.0)	0.0	(0.0)

NBFIs: Non-Bank Financial Institutions

Source: Central Bank of Liberia, Monrovia, Liberia.

MONEY AND BANKING

CENTRAL BANK OF LIBERIA

1.1b: Depository Corporations Survey - 2016 Cont.

Millions of Liberian Dollars

	Jul-16	Aug-16	Sep-16	Oct-16	Nov-16	Dec-16
Foreign Assets (net)	35,692.8	35,895.50	34,782.5	32,538.17	30,310.9	38,612.79
Foreign Assets (MA)	50,903.3	52,268.2	50,468.9	49,467.9	50,446.5	57,816.8
(-) Foreign Liabilities (MA)	24,797.4	25,858.2	25,858.2	26,123.3	26,653.7	27,184.1
Foreign Assets (CoB)	12,016.7	11,812.0	12,435.4	11,807.5	9,325.0	10,606.8
(-) Foreign Liabilities (CoB)	2,429.9	2,326.5	2,408.3	2,613.9	2,806.8	2,626.7
Domestic Credit	56,247.0	59,716.0	61,011.6	62,492.4	66,476.4	65,611.3
Claims on General Government (net)	14,115.8	14,747.7	14,494.7	15,781.3	16,620.0	17,161.8
Claims on General Government (MA)	28,177.9	29,344.0	29,344.0	29,635.5	30,218.5	30,801.5
(-) General Government Deposits (MA)	15,397.9	15,881.7	17,244.8	16,262.2	17,418.9	17,771.9
Claims on General Government (CoB)	2,155.5	2,161.7	3,186.3	3,236.7	4,620.4	4,743.8
(-) General Government Deposits (CoB)	819.7	876.2	790.7	828.6	800.1	611.6
Claims on Public Corporations (MA)	0.0	0.0	0.0	0.0	0.0	0.0
Claims on Public Corporations (CoB)	3,837.4	4,460.3	4,664.3	4,502.8	5,057.5	5,355.1
Claims on Private Sector (MA)	1,829.4	1,902.3	2,432.5	2,086.8	4,172.9	2,192.8
Claims on Private Sector (CoB)	36,293.1	38,413.8	39,227.0	39,927.5	40,419.8	40,692.5
Claims on NBFIs (MA)	0.0	0.0	0.0	0.0	0.0	0.0
Claims on NBFIs (CoB)	171.2	191.9	193.1	194.1	206.2	209.0
Money	61,493.3	63,130.1	63,375.0	62,279.5	62,332.0	67,059.0
Currency Outside Banks (MA)	9,181.9	8,798.1	8,840.7	9,117.7	9,931.8	11,851.6
Liberian Currency in Circulation (MA)	9,815.4	9,779.9	9,711.3	9,939.8	10,830.8	12,755.1
(-) Currency Holdings (CoB)	633.6	981.8	870.6	822.0	899.0	903.5
Demand Deposits	31,588.0	33,036.2	32,836.7	30,953.0	31,007.1	33,913.5
Demand Deposits (MA)	711.4	418.8	452.9	344.5	382.8	347.0
Demand Deposits (CoB)	30,876.6	32,617.4	32,383.8	30,608.5	30,624.3	33,566.4
Other Deposits	20,723.5	21,295.8	21,697.6	22,208.7	21,393.0	21,293.9
Other Deposits (MA)	62.9	107.4	10.4	531.4	24.3	529.9
Time and Savings Deposits (CoB)	20,660.6	21,188.4	21,687.1	21,677.3	21,368.8	20,764.0
Bonds and Securities (CoB)	-	-	-	-	-	-
Restricted Deposits	16.3	15.6	15.6	15.0	15.0	14.2
Capital Accounts	29,884.7	31,339.3	31,085.3	31,247.7	31,636.5	36,235.9
Capital Accounts (MA)	14,352.1	15,827.3	15,714.7	15,744.9	16,313.1	20,344.3
Capital Accounts (CoB)	15,532.5	15,512.0	15,370.6	15,502.8	15,323.5	15,891.6
Other Items (net)	608.3	1,233.8	1,328.6	2,019.9	2,828.1	1,444.9
Unclassified Liabilities (MA)	42,729.1	43,106.3	43,088.6	43,822.0	44,761.1	45,844.0
(-) Unclassified Assets (MA)	40,757.4	43,200.8	43,943.0	44,244.2	43,411.4	44,266.3
(-) Unclassified Assets (CoB)	8,811.5	8,875.3	8,324.3	7,888.3	9,175.6	10,538.5
Unclassified Liabilities (CoB)	7,672.7	9,190.2	9,770.0	9,100.2	11,275.8	10,203.7
Commercial Banks' Deposits (MA)	15,883.0	18,482.4	16,092.9	14,391.6	13,990.2	13,197.6
(-) Reserves (CoB)	16,670.1	18,108.8	16,693.2	15,477.2	16,280.5	14,447.8
Currency Holdings (CoB)	633.6	981.8	870.6	822.0	899.0	903.5
Liabilities to Central Bank (CoB)	1,958.1	2,308.3	2,308.5	2,698.8	2,881.9	2,926.4
(-) Claims on Domestic Banks (MA)	2,060.6	2,726.2	1,975.4	1,714.3	2,113.6	2,681.6
(-) Claims on Central Bank of Liberia (CoB)	11.0	11.0	11.0	11.0	11.0	11.0
(-) Unbalanced Items	42.4	87.0	0.4	520.3	12.3	314.9
Vertical Check	0.0	(0.0)	(0.0)	(0.0)	(0.0)	(0.0)

NBFIs: Non-Bank Financial Institutions

Source: Central Bank of Liberia, Monrovia, Liberia.

MONEY AND BANKING
1.1c: Depository Corporations Survey -2017

Millions of Liberian Dollars

CENTRAL BANK OF LIBERIA

	Jan-17	Feb-17	Mar-17	Apr-17	May-17	Jun-17
Foreign Assets (net)	37,780.31	36,726.82	32,593.25	33,772.67	34,643.54	34,223.9
Foreign Assets (MA)	56,888.5	54,967.3	52,267.8	52,271.1	53,616.1	55,212.4
(-) Foreign Liabilities (MA)	27,714.5	27,449.3	27,714.5	28,244.9	29,563.0	30,003.2
Foreign Assets (CoB)	10,844.9	11,487.0	10,360.6	12,185.3	13,043.6	11,366.9
(-) Foreign Liabilities (CoB)	2,238.6	2,278.2	2,320.5	2,438.8	2,453.2	2,352.3
Domestic Credit	63,434.0	65,917.1	69,948.2	73,053.5	79,593.5	83,593.4
Claims on General Government (net)	12,934.3	14,583.3	18,103.7	19,064.4	22,089.5	25,834.5
Claims on General Government (MA)	26,919.7	26,670.9	26,919.7	27,946.7	30,879.9	32,460.6
(-) General Government Deposits (MA)	17,827.4	16,120.6	12,640.9	12,542.3	12,414.3	10,320.0
Claims on General Government (CoB)	4,707.4	4,950.4	4,742.2	4,602.5	4,609.9	4,596.7
(-) General Government Deposits (CoB)	865.4	917.4	917.3	942.5	986.0	902.8
Claims on Public Corporations (MA)	0.0	0.0	0.0	0.0	0.0	0.0
Claims on Public Corporations (CoB)	6,242.8	6,218.1	6,743.9	7,732.6	3,285.7	3,534.3
Claims on Private Sector (MA)	2,218.5	2,221.8	2,015.9	1,886.8	1,998.4	2,020.1
Claims on Private Sector (CoB)	41,826.4	42,682.2	42,563.9	43,840.7	51,499.1	51,454.1
Claims on NBFIs (MA)	0.0	0.0	0.0	0.0	0.0	0.0
Claims on NBFIs (CoB)	212.1	211.6	520.8	529.1	720.7	750.5
Money	68,406.9	67,766.4	67,926.0	68,452.6	71,167.1	69,934.8
Currency Outside Banks (MA)	10,670.0	10,762.8	10,950.5	10,876.0	10,881.5	11,182.7
Liberian Currency in Circulation (MA)	12,224.8	12,239.6	12,569.5	12,424.5	12,492.1	12,512.8
(-) Currency Holdings (CoB)	1,554.8	1,476.7	1,618.9	1,548.6	1,610.6	1,330.1
Demand Deposits	35,793.3	35,056.9	35,018.9	35,161.4	37,485.1	35,587.6
Demand Deposits (MA)	447.0	412.9	309.3	408.3	463.4	527.4
Demand Deposits (CoB)	35,346.3	34,644.0	34,709.6	34,753.1	37,021.7	23,164.2
Other Deposits	21,943.7	21,946.7	21,956.6	22,415.2	22,800.5	55.7
Other Deposits (MA)	555.1	160.3	146.6	112.8	77.5	77.7
Time and Savings Deposits (CoB)	21,388.6	21,786.4	21,810.0	22,302.4	22,722.9	23,108.6
Bonds and Securities (CoB)	-	-	-	-	-	-
Restricted Deposits	14.2	14.2	14.2	14.2	14.2	14.2
Capital Accounts	38,958.7	37,274.7	37,009.5	38,363.9	39,663.3	39,107.7
Capital Accounts (MA)	21,869.8	20,205.5	20,732.6	20,715.0	22,411.8	21,917.9
Capital Accounts (CoB)	17,088.9	17,069.3	16,276.8	17,649.0	17,251.5	17,189.8
Other Items (net)	(5,610.4)	(2,251.2)	(2,261.7)	108.2	3,470.0	8,816.2
Unclassified Liabilities (MA)	42,252.2	41,812.8	43,039.3	43,731.6	45,745.3	50,434.2
(-) Unclassified Assets (MA)	46,344.5	44,803.3	45,544.9	46,029.2	47,363.1	48,059.2
(-) Unclassified Assets (CoB)	9,300.7	9,045.5	8,532.8	10,345.2	11,745.5	9,361.4
Unclassified Liabilities (CoB)	8,027.2	9,937.3	9,008.9	12,717.6	17,247.3	14,036.0
Commercial Banks' Deposits (MA)	12,146.8	11,939.6	11,555.6	11,912.5	13,257.4	13,814.7
(-) Reserves (CoB)	14,795.0	14,576.7	14,518.4	14,547.2	15,909.1	14,723.7
Currency Holdings (CoB)	1,554.8	1,476.7	1,618.9	1,548.6	1,610.6	1,330.1
Liabilities to Central Bank (CoB)	2,971.2	2,535.7	2,936.2	2,976.0	3,127.7	3,134.6
(-) Claims on Domestic Banks (MA)	2,453.2	1,663.8	1,946.2	1,944.6	2,555.0	1,797.3
(-) Claims on Central Bank of Liberia (CoB)	11.0	11.0	11.0	11.0	11.0	11.0
(-) Unbalanced Items	341.9	146.9	132.7	99.2	65.4	19.3
Vertical Check	0.0	(0.0)	0.0	(0.0)	0.0	0.0

NBFIs: Non-Bank Financial Institutions

Source : Central Bank of Liberia, Monrovia, Libe

MONEY AND BANKING

CENTRAL BANK OF LIBERIA

1.2a: Sectoral Balance Sheet of Other Depository Corporations - 2015

Thousands of Liberian Dollars

	Jan-15	Feb-15	Mar-15	Apr-15	May-15	Jun-15
Assets						
Reserves	12,845,751.78	11,817,606.34	13,212,191.94	16,361,055.25	13,892,328.17	14,798,845.13
of which: Cash on Hand: Coins/LD Notes	1,776,125.74	1,456,902.40	1,402,756.74	1,424,079.43	1,436,542.20	1,396,789.09
Foreign Assets	17,644,499.10	18,849,342.10	17,160,978.62	16,244,598.58	16,794,811.91	17,058,472.17
Claims on General Government	3,476,075.52	3,414,740.52	3,464,182.38	2,274,296.40	2,382,116.42	3,584,623.35
Claims on Public Corporations	1,870,160.03	1,807,184.90	1,931,393.84	1,975,410.56	2,034,356.79	2,136,659.56
Claims on Private Sector	31,038,696.07	31,127,048.07	31,954,178.17	31,799,931.66	32,390,002.32	32,952,097.20
Claims on Central Bank of Liberia	1,068,900.18	1,068,900.18	1,068,901.18	1,068,900.18	11,010.71	11,011.71
Claims on NBFIs	124,949.46	122,163.55	129,101.43	129,681.70	130,275.55	132,647.46
Unclassified Assets	9,103,372.25	9,694,638.22	10,466,325.79	10,408,140.47	10,126,558.91	10,305,954.58
Total Assets	77,172,404.40	77,901,623.89	79,387,253.34	80,262,014.80	77,761,460.78	80,980,311.16
	Jan-15	Feb-15	Mar-15	Apr-15	May-15	Jun-15
Liabilities						
Demand Deposits	29,341,380.28	29,257,140.76	29,190,793.65	29,866,513.85	28,703,476.66	30,532,104.56
Time and Savings Deposits	16,513,604.72	17,584,310.83	18,503,790.23	18,238,109.43	18,519,657.78	19,242,784.82
Restricted Deposits	10,863.61	10,863.61	10,863.61	10,863.61	19,409.06	19,409.06
Bonds and Securities	-	-	-	-	-	-
Foreign Liabilities	2,614,207.28	2,695,723.58	3,109,710.29	3,075,654.47	2,796,810.79	2,751,709.69
Government Deposits	767,507.73	760,890.38	829,134.50	731,752.74	798,927.21	718,441.14
Liabilities to Central Bank of Liberia	1,922,591.52	1,932,796.77	1,933,001.77	1,933,061.77	1,933,411.77	1,949,130.15
Capital Accounts	13,686,761.65	13,741,025.61	14,229,382.49	14,246,796.55	13,829,675.69	13,144,831.84
Unclassified Liabilities	12,315,487.61	11,918,872.36	11,580,576.81	12,159,262.39	11,160,091.84	12,621,899.89
Total Liabilities	77,172,404.40	77,901,623.89	79,387,253.34	80,262,014.80	77,761,460.78	80,980,311.16
Vertical Check (Assets/Liabilities)	-	-	-	-	-	-

NBFIs: Non-Bank Financial Institutions

Source : Central Bank of Liberia, Monrovia, Liberia.

MONEY AND BANKING

1.2a: Sectoral Balance Sheet of Other Depository Corporations - 2015 contd

CENTRAL BANK OF LIBERIA

Thousands of Liberian Dollars

	Jul-15	Aug-15	Sep-15	Oct-15	Nov-15	Dec-15
Assets						
Reserves	15,920,086.03	13,963,909.73	14,003,879.87	13,302,808.70	13,666,887.75	12,298,198.57
of which: Cash on Hand: Coins/LD Notes	1,280,779.54	1,549,964.98	1,230,194.90	1,062,651.49	885,732.02	701,134.94
Foreign Assets	16,166,316.43	11,737,285.44	12,280,457.86	11,846,738.39	11,217,686.12	12,150,473.08
Claims on General Government	2,510,029.49	4,096,908.33	4,077,224.58	3,889,360.14	3,855,571.38	3,809,783.06
Claims on Public Corporations	2,359,010.77	2,742,082.93	2,737,640.88	2,720,699.67	2,774,992.07	2,908,115.65
Claims on Private Sector	33,534,296.21	34,813,084.46	35,578,567.25	35,507,413.54	35,847,016.95	35,836,991.72
Claims on Central Bank of Liberia	11,010.71	11,010.71	11,010.71	11,010.71	11,010.71	11,010.71
Claims on NBFIs	134,659.99	138,155.61	140,852.44	151,215.72	197,989.14	199,485.20
Unclassified Assets	10,981,673.24	10,920,989.16	10,905,118.86	11,070,147.62	10,990,137.65	9,412,500.32
Total Assets	81,617,082.87	78,423,426.38	79,734,752.46	78,499,394.49	78,561,291.76	76,626,558.31
	Jul-15	Aug-15	Sep-15	Oct-15	Nov-15	Dec-15
Liabilities						
Demand Deposits	31,558,805.63	31,848,964.52	31,094,583.68	30,682,286.20	30,418,259.06	31,380,258.65
Time and Savings Deposits	19,039,198.30	19,283,013.26	19,960,885.95	19,713,279.34	20,048,257.94	19,496,282.79
Restricted Deposits	19,409.06	19,409.06	19,409.06	19,409.06	19,409.06	16,853.11
Bonds and Securities	-	-	-	-	-	-
Foreign Liabilities	2,631,948.52	2,909,758.66	3,097,241.52	2,970,158.95	2,990,398.25	2,495,562.10
Government Deposits	790,140.55	909,414.41	818,366.21	1,006,306.42	936,676.59	832,493.56
Liabilities to Central Bank of Liberia	1,980,365.93	1,996,093.32	2,821,384.76	2,796,755.45	2,796,332.45	3,066,190.89
Capital Accounts	13,604,796.42	13,841,838.02	13,926,977.19	13,857,537.93	13,529,444.66	12,190,473.75
Unclassified Liabilities	11,992,418.46	7,614,935.13	7,995,904.10	7,453,661.15	7,822,513.75	7,148,443.45
Total Liabilities	81,617,082.87	78,423,426.38	79,734,752.46	78,499,394.49	78,561,291.76	76,626,558.31
Vertical Check (Assets/Liabilities)	-	-	-	-	-	-

NBFIs: Non-Bank Financial Institutions

Source: Central Bank of Liberia, Monrovia, Liberia.

MONEY AND BANKING

CENTRAL BANK OF LIBERIA

1.2b: Sectoral Balance Sheet of Other Depository Corporations - 2016

Thousands of Liberian Dollars

	Jan-16	Feb-16	Mar-16	Apr-16	May-16	Jun-16
Assets						
Reserves	13,234,287.78	14,963,352.57	15,407,434.12	15,458,548.61	16,210,194	18,235,502.44
of which: Cash on Hand: Coins/LD Notes	1,210,954.90	1,434,697.62	1,411,541.01	1,227,004.58	1,241,860.84	982,540.58
Foreign Assets	10,207,699.63	8,978,420.17	10,415,105.25	10,774,543.01	9,693,893.44	11,155,630.02
Claims on General Government	3,760,164.51	2,165,923.24	2,134,140.02	2,154,828.81	2,173,608.98	433,714.04
Claims on Public Corporations	4,050,530.26	4,247,529.73	4,036,778.62	4,222,717.23	4,212,188.54	4,243,326.37
Claims on Private Sector	35,508,491.24	35,612,514.56	35,969,868.44	36,423,037.69	34,168,765.01	36,867,500.71
Claims on Central Bank of Liberia	11,010.71	11,010.71	11,010.71	11,010.71	11,010.71	11,010.71
Claims on NBFIs	174,057.61	175,652.94	177,641.74	164,242.59	165,540.66	171,743.97
Unclassified Assets	9,448,100.17	9,887,392.58	8,823,549.04	9,337,824.74	8,073,632.98	7,370,856.63
Total Assets	76,394,341.92	76,041,796.50	76,975,527.93	78,546,753.40	74,708,834.42	78,489,284.88
	Jan-16	Feb-16	Mar-16	Apr-16	May-16	Jun-16
Liabilities						
Demand Deposits	30,566,831.47	29,845,661.03	31,662,836.87	31,147,602.85	29,567,195.86	30,610,778.95
Time and Savings Deposits	19,749,574.59	20,287,992.88	19,794,085.48	20,566,623.17	20,304,805.79	20,954,000.99
Restricted Deposits	16,853.11	16,853.11	16,853.11	16,303.56	16,303.56	16,303.56
Bonds and Securities	-	-	-	-	-	-
Foreign Liabilities	2,699,146.57	2,338,566.51	2,081,992.33	2,186,756.35	2,373,287.32	2,329,680.68
Government Deposits	901,151.32	837,586.96	605,262.85	839,362.96	354,561.52	398,725.49
Liabilities to Central Bank of Liberia	2,995,059.72	2,995,172.08	2,995,325.71	3,020,822.81	1,929,293.21	2,255,930.22
Capital Accounts	12,926,198.59	12,915,875.00	12,823,197.87	13,565,857.66	13,191,183.89	13,703,450.49
Unclassified Liabilities	6,539,526.56	6,804,088.94	6,995,974.06	7,203,424.05	6,972,202.94	8,220,414.42
Total Liabilities	76,394,341.92	76,041,796.50	76,975,528.28	78,546,753.40	74,708,834.10	78,489,284.81
Vertical Check (Assets/Liabilities)	-	-	-	-	-	-

NBFIs: Non-Bank Financial Institutions

Source: Central Bank of Liberia, Monrovia, Liberia.

MONEY AND BANKING

CENTRAL BANK OF LIBERIA

1.2b: Sectoral Balance Sheet of Other Depository Corporations - 2016 Cont.

Thousands of Liberian Dollars

	Jul-16	Aug-16	Sep-16	Oct-16	Nov-16	Dec-16
Assets						
Reserves	16,670,056	18,108,768.19	16,693,227	15,477,243.77	16,280,511	14,447,838
of which: Cash on Hand: Coins/LD Notes	633,559.71	981,831.99	870,607.32	822,038.78	899,009.87	903,526.11
Foreign Assets	12,016,720.71	11,811,970.85	12,435,376.92	11,807,485.94	9,325,014.22	10,606,835.72
Claims on General Government	2,155,540.87	2,161,675.73	3,186,338.05	3,236,673.13	4,620,447.47	4,743,813.53
Claims on Public Corporations	3,837,407.28	4,460,265.14	4,664,267.46	4,502,778.15	5,057,490.09	5,355,100.49
Claims on Private Sector	36,293,138.94	38,413,751.72	39,227,001.23	39,927,451.57	40,419,815.45	40,692,511.47
Claims on Central Bank of Liberia	11,010.71	11,010.71	11,010.71	11,010.71	11,010.71	11,010.71
Claims on NBFIs	171,157.03	191,928.02	193,078.48	194,074.79	206,195.52	208,995.91
Unclassified Assets	8,811,479.70	8,875,288.49	8,324,330.77	7,888,301.44	9,175,596.39	10,538,502.51
Total Assets	79,966,511.01	84,034,658.85	84,734,630.69	83,045,019.50	85,096,080.42	86,604,608.24
	Jul-16	Aug-16	Sep-16	Oct-16	Nov-16	Dec-16
Liabilities						
Demand Deposits	30,876,598.61	32,617,356.53	32,383,831.68	30,608,536.31	30,624,334.85	33,566,448.75
Time and Savings Deposits	20,660,599.72	21,188,421.33	21,687,126.36	21,677,308.58	21,368,751.90	20,763,960.17
Restricted Deposits	16,303.56	15,596.18	15,596.18	14,953.95	14,953.95	14,243.93
Bonds and Securities	-	-	-	-	-	-
Foreign Liabilities	2,429,921.77	2,326,538.01	2,408,251.00	2,613,855.05	2,806,839.65	2,626,691.38
Government Deposits	819,748.99	876,233.08	790,712.88	828,596.17	800,063.69	611,586.72
Liabilities to Central Bank of Liberia	1,958,124.40	2,308,310.41	2,308,542.41	2,698,773.41	2,881,926.96	2,926,409.86
Capital Accounts	15,532,511.59	15,512,046.12	15,370,603.09	15,502,816.30	15,323,453.82	15,891,577.12
Unclassified Liabilities	7,672,701.92	9,190,157.21	9,769,966.80	9,100,180.21	11,275,755.61	10,203,690.34
Total Liabilities	79,966,510.57	84,034,658.85	84,734,630.40	83,045,019.97	85,096,080.42	86,604,608.24
Vertical Check (Assets/Liabilities)	-	-	-	-	-	-

NBFIs: Non-Bank Financial Institutions

Source: Central Bank of Liberia, Monrovia, Liberia.

MONEY AND BANKING

CENTRAL BANK OF LIBERIA

1.2c: Sectoral Balance Sheet of Other Depository Corporations -2017

'Thousands of Liberian Dollars

	Jan-17	Feb-17	Mar-17	Apr-17	May-17	Jun-17
Assets						
Reserves	14,794,985	14,576,712	14,518,446	14,547,213	15,909,052	14,723,670
of which: Cash on Hand: Coins/LD Notes	1,554,769.36	1,476,711.18	1,618,944.56	1,548,580.03	1,610,609.64	1,330,072.90
Foreign Assets	10,844,948.50	11,487,032.92	10,360,566.80	12,185,287.51	13,043,606.43	11,366,938.71
Claims on General Government	4,707,389.98	4,950,377.05	4,742,188.58	4,602,503.62	4,609,877.16	4,596,651.69
Claims on Public Corporations	4,707,389.98	6,218,122.19	6,743,910.89	7,732,575.95	3,285,722.42	3,534,274.31
Claims on Private Sector	41,826,350.09	42,682,225.07	42,563,864.36	43,840,683	51,499,134.40	51,454,093
Claims on Central Bank of Liberia	11,010.71	11,010.71	11,010.71	11,010.71	11,010.71	11,010.71
Claims on NBFIs	212,093.25	211,576.87	520,799.43	529,083.73	720,741.07	750,467.16
Unclassified Assets	9,300,706.37	9,045,475.05	8,532,813.07	10,345,200.34	11,745,504.24	9,361,436.86
Total Assets	87,940,313.61	89,182,532.33	87,993,599.81	93,793,558.15	100,824,648.54	95,798,542.79
	Jan-17	Feb-17	Mar-17	Apr-17	May-17	Jun-17
Liabilities						
Demand Deposits	35,346,285.31	34,643,979.15	34,709,596.69	34,753,083.47	37,021,749.97	35,060,258.41
Time and Savings Deposits	21,388,565.39	21,786,414.97	21,809,997.75	22,302,416.49	22,722,931.73	23,108,551.33
Restricted Deposits	14,243.93	14,243.93	14,243.93	14,243.93	14,243.93	14,243.93
Bonds and Securities	-	-	-	-	-	-
Foreign Liabilities	2,238,643.46	2,278,199.58	2,320,547.52	2,438,760.67	2,453,206.32	2,352,279.85
Government Deposits	865,366.22	917,377.62	917,289.41	942,490.44	985,977.31	902,820.76
Liabilities to Central Bank of Liberia	2,971,150.75	2,535,713.28	2,936,201.58	2,976,004.00	3,127,735.44	3,134,607.07
Capital Accounts	17,088,901.56	17,069,281.97	16,276,821.13	17,648,967.38	17,251,460.04	17,189,827.01
Unclassified Liabilities	8,027,156.99	9,937,321.85	9,008,901.80	12,717,591.78	17,247,343.80	14,035,954.43
Total Liabilities	87,940,313.61	89,182,532.33	87,993,599.81	93,793,558.15	100,824,648.54	95,798,542.79
Vertical Check (Assets/Liabilities)	-	-	-	-	-	-

NBFIs: Non-Bank Financial Institutions

Source: Central Bank of Liberia, Monrovia, Liberia.

MONEY AND BANKING

CENTRAL BANK OF LIBERIA

1.3a: Sectoral Balance Sheet of Central Bank of Liberia - 2015

Thousands of Liberian Dollars

	Jan-15	Feb-15	Mar-15	Apr-15	May-15	Jun-15
Assets						
Foreign Assets	45,252,759.58	49,026,393.28	47,305,959.80	45,212,007.14	46,095,286.64	46,203,773.27
Claims on General Government	21,944,028.89	21,944,028.89	21,944,028.89	21,944,028.89	21,944,028.89	22,192,812.60
Claims on Public Corporations	-	-	-	-	-	-
Claims on Private Sector	270,883.77	292,968.67	304,041.85	309,764.97	303,330.47	310,726.74
Claims on Domestic Banks	2,588,628.12	2,287,638.01	2,449,790.73	2,434,380.42	2,867,718.33	2,877,740.73
Claims on NBFIs	-	-	-	-	-	-
Unclassified Assets	20,428,280.71	20,540,866.58	20,649,286.57	20,799,159.82	20,919,932.23	21,131,866.90
Total Assets	90,484,581.08	94,091,895.43	92,653,107.85	90,699,341.24	92,130,296.56	92,716,920.24
	Jan-15	Feb-15	Mar-15	Apr-15	May-15	Jun-15
Liabilities						
Reserve Money	22,156,546.58	25,875,926.70	22,411,092.75	22,701,191.19	23,364,413.27	23,199,153.59
Other Deposits	-	-	-	-	-	-
Restricted Reserves	-	-	-	-	-	-
Foreign Liabilities	22,410,576.73	22,410,576.73	22,410,576.73	22,410,576.73	22,410,576.73	22,675,774.75
Liabilities to General Government	11,697,307.01	11,777,039.49	13,794,100.24	12,768,087.85	13,623,079.74	13,781,168.64
Capital Accounts	16,241,229.51	16,230,379.82	16,256,829.01	15,982,850.79	15,902,515.72	15,824,086.05
Unclassified Liabilities	17,978,921.25	17,797,972.68	17,780,509.12	16,836,634.68	16,829,711.10	17,236,737.20
Total Liabilities	90,484,581.08	94,091,895.43	92,653,107.85	90,699,341.24	92,130,296.56	92,716,920.24
Vertical Check (Assets/Liabilities)	-	-	-	-	-	-

NBFIs: Non-Bank Financial Institutions

Source: Central Bank of Liberia, Monrovia, Liberia.

MONEY AND BANKING

CENTRAL BANK OF LIBERIA

1.3a: Sectoral Balance Sheet of Central Bank of Liberia - 2015 contd.

Thousands of Liberian Dollars

	Jul-15	Aug-15	Sep-15	Oct-15	Nov-15	Dec-15
Assets						
Foreign Assets	47,310,304.23	47,083,826.73	45,692,233.24	49,090,072.92	47,480,719.34	47,693,430.06
Claims on General Government	22,690,380.00	22,939,163.70	22,939,163.70	22,690,380.00	22,690,380.00	22,939,163.70
Claims on Public Corporations	-	-	-	-	-	-
Claims on Private Sector	314,999.17	325,478.24	307,595.75	299,119.16	296,310.90	346,030.42
Claims on Domestic Banks	3,144,931.49	2,392,900.36	2,414,325.37	2,377,755.63	2,479,869.62	2,494,569.65
Claims on NBFIs	-	-	-	-	-	-
Unclassified Assets	21,557,739.82	21,793,077.63	21,794,013.94	21,580,487.98	21,570,023.27	21,685,995.75
Total Assets	95,018,354.70	94,534,446.65	93,147,332.01	96,037,815.68	94,517,303.12	95,159,189.57
	Jul-15	Aug-15	Sep-15	Oct-15	Nov-15	Dec-15
Liabilities						
Reserve Money	25,427,556.68	23,442,432.91	25,189,528.76	23,340,705.89	23,716,393.26	23,125,379.08
Other Deposits	-	-	-	-	-	-
Restricted Reserves	-	-	-	-	-	-
Foreign Liabilities	23,206,932.04	23,472,130.06	23,471,368.82	23,206,170.80	23,206,170.80	23,471,368.82
Liabilities to General Government	13,703,150.23	13,479,959.47	10,478,397.16	16,159,564.17	14,357,796.22	15,263,933.80
Capital Accounts	16,424,556.57	16,065,364.46	15,900,442.12	15,394,286.56	15,289,873.80	15,127,848.51
Unclassified Liabilities	16,256,159.18	18,074,559.75	18,107,595.15	17,937,088.27	17,947,069.05	18,170,659.36
Total Liabilities	95,018,354.70	94,534,446.65	93,147,332.01	96,037,815.68	94,517,303.12	95,159,189.57
Vertical Check (Assets/Liabilities)	-	-	-	-	-	-

*NBFIs: Non-Bank Financial Institutions
Source: Central Bank of Liberia, Monrovia, Liberia.*

MONEY AND BANKING**1.3b: Sectoral Balance Sheet of Central Bank of Liberia - 2016***Thousands of Liberian Dollars*

	Jan-16	Feb-16	Mar-16	Apr-16	May-16	Jun-16
Assets						
Foreign Assets	48,957,650.57	47,149,190.38	46,677,208.18	48,322,195.71	49,649,877.47	53,288,935.95
Claims on General Government	23,436,731.10	27,178,997.27	23,436,731.10	27,346,114.63	27,594,898.33	28,469,425.94
Claims on Public Corporations	-	-	-	-	-	-
Claims on Private Sector	351,146.36	352,221.38	364,333.50	364,333.50	1,623,514.84	1,574,430.95
Claims on Domestic Banks	2,482,550.15	2,697,603.75	2,287,621.16	2,655,549.44	1,374,109.05	2,443,753.07
Claims on NBFIs	-	-	-	-	-	-
Unclassified Assets	22,138,520.24	22,139,585.02	22,218,875.61	22,410,426.90	39,916,586.86	41,140,042.96
Total Assets	97,366,598.42	96,354,606.40	94,984,769.55	101,098,620.17	120,158,986.54	126,916,588.88
	Jan-16	Feb-16	Mar-16	Apr-16	May-16	Jun-16
Liabilities						
Reserve Money	23,429,013.07	23,499,978.02	25,175,398.59	27,393,398.99	26,496,765.52	29,438,603.80
Other Deposits	-	-	-	-	-	-
Restricted Reserves	-	-	-	-	-	-
Foreign Liabilities	24,001,764.86	23,921,447.96	24,001,764.86	24,255,510.72	24,266,962.89	25,062,556.95
Liabilities to General Government	15,584,459.20	15,294,280.92	13,780,553.66	13,398,886.74	13,616,861.41	13,783,190.00
Capital Accounts	15,642,849.36	15,288,046.19	15,034,373.96	14,921,905.84	14,149,521.65	14,693,969.93
Unclassified Liabilities	18,708,511.93	18,350,853.31	16,992,679.47	21,128,917.88	41,628,875.07	43,938,268.19
Total Liabilities	97,366,598.42	96,354,606.40	94,984,770.55	101,098,620.17	120,158,986.54	126,916,588.88
Vertical Check (Assets/Liabilities)	-	-	-	-	-	-

*NBFIs: Non-Bank Financial Institutions**Source: Central Bank of Liberia, Monrovia, Liberia.*

MONEY AND BANKING

CENTRAL BANK OF LIBERIA

1.3b: Sectoral Balance Sheet of Central Bank of Liberia - 2016 Cont.

'Thousands of Liberian Dollars

	Jul-16	Aug-16	Sep-16	Oct-16	Nov-16	Dec-16
Assets						
Foreign Assets	50,903,329.16	52,268,177.06	50,468,940.15	49,467,888.80	50,446,493.92	57,816,784.87
Claims on General Government	28,177,916.73	29,343,953.55	29,343,953.55	29,635,462.75	30,218,481.16	30,801,499.57
Claims on Public Corporations	-	-	-	-	-	-
Claims on Private Sector	1,829,427.77	1,902,340.82	2,432,542.57	2,086,755.22	4,172,870.68	2,192,832.46
Claims on Domestic Banks	2,060,613.52	2,726,203.71	1,975,370.52	1,714,266.33	2,113,649.44	2,681,558.25
Claims on NBFIs	-	-	-	-	-	-
Unclassified Assets	40,757,382.36	43,200,848.41	43,942,975.69	44,244,156.28	43,411,403.51	44,266,327.98
Total Assets	123,728,669.54	129,441,523.56	128,163,782.48	127,148,529.39	130,362,898.72	137,759,003.12
	Jul-16	Aug-16	Sep-16	Oct-16	Nov-16	Dec-16
Liabilities						
Reserve Money	26,452,192.75	28,768,105.10	26,257,431.04	25,196,125.67	25,216,129.68	26,614,621.59
Other Deposits	-	-	-	-	-	-
Restricted Reserves	-	-	-	-	-	-
Foreign Liabilities	24,797,358.93	25,858,151.02	25,858,151.02	26,123,349.04	26,653,745.08	27,184,141.13
Liabilities to General Government	15,397,872.80	15,881,679.62	17,244,844.93	16,262,241.37	17,418,862.30	17,771,885.09
Capital Accounts	14,352,142.10	15,827,303.53	15,714,743.70	15,744,860.83	16,313,092.01	20,344,333.20
Unclassified Liabilities	42,729,102.96	43,106,284.30	43,088,611.79	43,821,952.48	44,761,069.65	45,844,022.10
Total Liabilities	123,728,669.54	129,441,523.56	128,163,782.48	127,148,529.39	130,362,898.72	137,759,003.12
Vertical Check (Assets/Liabilities)	-	-	-	-	-	-

NBFIs: Non-Bank Financial Institutions

Source: Central Bank of Liberia, Monrovia, Liberia.

MONEY AND BANKING

CENTRAL BANK OF LIBERIA

1.3c: Sectoral Balance Sheet of Central Bank of Liberia -2017

'Thousands of Liberian Dollars

	Jan-17	Feb-17	Mar-17	Apr-17	May-17	Jun-17
Assets						
Foreign Assets	56,888,544.63	54,967,326.40	52,267,767.66	52,271,077.65	53,616,104.65	55,212,338.51
Claims on General Government	26,919,702.90	26,670,919.21	26,919,702.91	27,946,684.27	30,879,895.25	32,460,606.2
Claims on Public Corporations	-	-	-	-	-	-
Claims on Private Sector	2,218,468.70	2,221,847.33	2,015,899.01	1,886,782.83	1,998,449.04	2,020,132.9
Claims on Domestic Banks	2,453,222.37	1,663,825.62	1,946,157.84	1,944,563.38	2,555,003.59	1,797,259.0
Claims on NBFIs	-	-	-	-	-	-
Unclassified Assets	46,344,534.29	44,803,290.15	45,544,851.40	46,029,228.21	47,363,132.81	48,059,188.9
Total Assets	134,824,472.90	130,327,208.69	128,694,378.87	130,078,336.35	136,412,585.34	139,314,547.80
	Jan-17	Feb-17	Mar-17	Apr-17	May-17	Jun-17
Liabilities						
Reserve Money	25,160,543.36	24,738,934.89	24,567,010.71	24,844,497.50	26,278,195.11	26,874,328.5
Other Deposits	-	-	-	-	-	-
Restricted Reserves	-	-	-	-	-	-
Foreign Liabilities	27,714,537.17	27,449,339.15	27,714,537.20	28,244,933.22	29,562,967.39	30,003,196.10
Liabilities to General Government	17,827,419.54	16,120,627.29	12,640,906.26	12,542,312.36	12,414,315.70	10,319,978.2
Capital Accounts	21,869,793.86	20,205,459.09	20,732,640.60	20,714,980.92	22,411,796.51	21,917,915.8
Unclassified Liabilities	42,252,178.97	41,812,848.27	43,039,284.00	43,731,612.35	45,745,310.63	50,434,157.0
Total Liabilities	134,824,472.90	130,327,208.69	128,694,378.87	130,078,336.35	136,412,585.34	139,314,547.80
Vertical Check (Assets/Liabilities)	-	-	-	-	-	-

*NBFIs: Non-Bank Financial Institutions
Source: Central Bank of Liberia, Monrovia, Liberia.*

MONEY AND BANKING

CENTRAL BANK OF LIBERIA

1.4a: Commercial Banks' Loans By Economic Sector - 2015 & 2016

Thousands of Liberian Dollars

Sector	Jan-15		Feb-15		Mar-15		Apr-15		May-15		Jun-15	
	L\$	%	L\$	%	L\$	%	L\$	%	L\$	%	L\$	%
1. Agriculture	1,777,429.82	6.3	1,681,963.15	6.0	2,062,248.30	7.1	2,007,063.63	7.0	1,984,230.06	7.1	2,320,279.37	7.7
1.1 Rubber	535,187.48	1.9	472,426.82	1.7	584,734.86	2.0	548,898.96	1.9	483,985.17	1.7	610,884.69	2.0
1.2 Forestry	330,354.44	1.2	348,055.50	1.2	465,541.77	1.6	434,459.29	1.5	452,632.99	1.6	649,325.48	2.2
1.3 Fishery	190,716.50	0.7	170,605.50	0.6	218,179.00	0.8	266,175.00	0.9	272,090.00	1.0	267,187.50	0.9
1.4 Others	721,171.41	2.6	690,875.33	2.5	793,792.67	2.7	757,530.39	2.6	775,521.91	2.8	792,881.71	2.6
2. Mining & Quarrying	189,195.50	0.7	179,140.00	0.6	187,674.50	0.6	206,518.00	0.7	199,398.50	0.7	221,274.00	0.7
2.1 Iron Ore	6,844.50	0.0	6,929.00	0.0	7,013.50	0.0	7,098.00	0.0	6,842.50	0.0	7,267.50	0.0
2.2 Quarrying	182,351.00	0.6	172,211.00	0.6	180,661.00	0.6	199,420.00	0.7	192,556.00	0.7	214,006.50	0.7
3. Manufacturing	742,579.94	2.6	697,669.18	2.5	633,388.02	2.2	563,954.29	2.0	532,904.23	1.9	804,248.37	2.7
4. Construction	4,595,675.58	16.3	4,479,554.76	16.0	4,794,920.41	16.5	4,697,317.97	16.3	4,558,156.86	16.3	5,270,091.07	17.5
4.1 Mortgage Loans	756,608.37	2.7	823,328.33	2.9	841,995.57	2.9	815,073.52	2.8	844,628.94	3.0	888,919.39	2.9
4.2 Home Improvement	-	-	3,887.00	0.0	-	-	4,225.00	0.0	3,864.00	0.0	11,628.00	0.0
4.3 Road Construction	1,638,348.00	5.8	1,219,862.50	4.4	1,575,183.50	5.4	1,472,315.50	5.1	1,312,443.50	4.7	1,750,818.00	5.8
4.4 Others	2,200,719.21	7.8	2,432,476.93	8.7	2,377,741.34	8.2	2,405,703.95	8.3	2,397,220.42	8.6	2,618,725.69	8.7
5. Trans., Storage & Comm.	2,237,710.00	7.9	2,249,469.79	8.0	2,224,256.42	7.6	2,539,358.00	8.8	2,410,925.67	8.6	2,599,509.81	8.6
5.1 Transportation	603,470.92	2.1	624,241.22	2.2	609,904.10	2.1	593,007.00	2.1	552,766.13	2.0	616,553.97	2.0
5.2 Storage	-	-	-	-	-	-	-	-	-	-	-	-
5.3 Oil & Gas	-	-	-	-	-	-	336,056.50	1.2	311,374.00	1.1	379,107.00	1.3
5.4 Communication	1,634,239.08	5.8	1,625,228.57	5.8	1,614,352.32	5.5	1,610,294.49	5.6	1,546,785.54	5.5	1,603,848.84	5.3
6. Trade, Hotel & Rest.	12,424,968.73	44.1	12,406,546.88	44.3	12,769,375.09	43.9	12,108,935.54	42.0	12,044,244.17	43.1	12,683,502.49	42.0
6.1 Diamond trade	64,012.13	0.2	66,443.20	0.2	68,401.06	0.2	66,639.24	0.2	64,098.13	0.2	66,647.25	0.2
6.2 Other trade	11,835,487.65	42.0	11,808,530.43	42.2	12,160,224.90	41.8	11,481,324.85	39.8	11,485,548.20	41.1	12,097,025.80	40.1
6.3 Hotels	396,303.21	1.4	403,812.84	1.4	394,427.48	1.4	417,053.88	1.4	350,580.20	1.3	401,819.01	1.3
6.4 Restaurants	129,165.74	0.5	127,760.42	0.5	146,321.65	0.5	143,917.58	0.5	144,017.65	0.5	118,010.44	0.4
7. Others	6,220,417.92	22.1	6,317,408.18	22.6	6,416,612.04	22.1	6,713,439.72	23.3	6,218,276.28	22.2	6,286,836.31	20.8
7.1 Services	1,699,833.16	6.0	1,676,956.95	6.0	1,866,426.41	6.4	1,557,680.54	5.4	1,484,123.44	5.3	1,703,979.84	5.6
7.2 Personal	2,685,830.78	9.5	2,578,694.24	9.2	2,607,420.79	9.0	2,639,688.96	9.2	2,602,644.03	9.3	2,812,667.24	9.3
7.3 GOL	609,577.50	2.2	686,305.50	2.5	607,894.00	2.1	599,649.00	2.1	571,168.00	2.0	611,496.00	2.0
7.4 Central Bank of Liberia	-	-	-	-	-	-	-	-	-	-	-	-
7.5 Public Corporations	300,010.00	1.1	306,005.00	1.1	303,713.00	1.0	297,614.50	1.0	243,419.00	0.9	260,281.50	0.9
7.6 Others	925,166.48	3.3	1,069,446.49	3.8	1,031,157.85	3.5	1,618,806.72	5.6	1,316,921.82	4.7	898,411.73	3.0
TOTAL	28,187,977.49	100.0	28,011,751.92	100.0	29,088,474.77	100.0	28,836,586.76	100.0	27,948,135.75	100.0	30,185,741.40	100.0

Source: Central Bank of Liberia, Monrovia, Liberia.

MONEY AND BANKING

CENTRAL BANK OF LIBERIA

1.4a: Commercial Banks' Loans By Economic Sector - 2015 & 2016 continued

Thousands of Liberian Dollars

Sector	Jul-15		Aug-15		Sep-15		Oct-15		Nov-15		Dec-15	
	L\$	%	L\$	%	L\$	%	L\$	%	L\$	%	L\$	%
1. Agriculture	2,324,403.36	7.5	2,282,274.59	7.1	2,296,706.80	6.9	2,438,180.29	7.3	251,662.56	13.42	252,794.00	13.29
1.1 Rubber	546,672.09	1.8	743,551.02	2.3	814,718.67	2.4	579,170.02	1.7	117,342.64	6.26	132,756.00	6.98
1.2 Forestry	654,558.63	2.1	411,790.50	1.3	417,543.00	1.2	608,846.88	1.8	10,982.00	0.59	-	-
1.3 Fishery	316,506.50	1.0	248,953.30	0.8	241,693.50	0.7	299,862.50	0.9	-	-	-	-
1.4 Others	806,666.15	2.6	877,979.78	2.7	822,751.63	2.5	950,300.89	2.8	123,337.92	6.58	120,038.00	6.31
2. Mining & Quarrying	199,762.50	0.6	222,577.50	0.7	211,338.00	0.6	191,800.00	0.6	-	-	-	-
2.1 Iron Ore	7,437.50	0.0	7,522.50	0.0	-	-	-	-	-	-	-	-
2.2 Quarrying	192,325.00	0.6	215,055.00	0.7	211,338.00	0.6	191,800.00	0.6	-	-	-	-
3. Manufacturing	725,972.13	2.3	717,151.69	2.2	874,896.43	2.6	962,777.50	2.9	8,282.00	0.44	2,637.00	0.14
4. Construction	4,927,106.91	15.9	4,955,788.38	15.3	5,629,687.96	16.8	5,577,076.56	16.6	249,474.10	13.30	193,962.00	10.20
4.1 Mortgage Loans	845,504.00	2.7	865,016.01	2.7	976,805.66	2.9	963,919.63	2.9	145,144.00	7.74	135,631.00	7.13
4.2 Home Improvement	11,812.50	0.0	11,770.50	0.0	50,976.00	0.2	62,912.50	0.2	-	-	-	-
4.3 Road Construction	1,376,629.50	4.5	1,532,013.02	4.7	1,838,587.50	5.5	1,046,406.00	3.1	-	-	56,524.00	2.97
4.4 Others	2,693,160.91	8.7	2,546,988.86	7.9	2,763,318.80	8.3	3,503,838.44	10.4	12,195.10	0.65	1,807.00	0.09
5. Trans., Storage & Comm.	2,696,103.88	8.7	2,795,802.74	8.7	2,766,661.63	8.3	2,898,452.75	8.6	98,836.00	5.27	89,204.00	4.69
5.1 Transportation	600,408.25	1.9	716,766.69	2.2	699,167.19	2.1	666,285.50	2.0	943.00	0.05	1,036.00	0.05
5.2 Storage	-	-	-	-	-	-	-	-	5.00	0.00	-	-
5.3 Oil & Gas	-	-	-	-	339,928.50	1.0	545,387.50	1.6	-	-	-	-
5.4 Communication	1,756,545.63	5.7	1,741,585.55	5.4	1,727,565.94	5.2	1,686,779.75	5.0	97,888.00	5.22	88,168.00	4.63
6. Trade, Hotel & Rest.	13,008,362.04	42.1	13,518,994.37	41.9	14,228,050.78	42.6	14,391,139.07	42.9	609,362.16	32.50	937,738.00	49.30
6.1 Diamond trade	69,188.88	0.2	71,112.41	0.2	70,525.65	0.2	70,545.13	0.2	-	-	-	-
6.2 Other trade	12,402,463.71	40.1	12,962,595.47	40.1	13,642,000.06	40.8	13,826,638.01	41.2	601,401.73	32.07	929,249.00	48.85
6.3 Hotels	-	-	-	-	404,883.96	1.2	379,524.38	1.1	544.00	0.03	3,092.00	0.16
6.4 Restaurants	-	-	-	-	110,641.11	0.3	114,431.56	0.3	7,416.43	0.40	5,397.00	0.28
7. Others					7,419,055.59	22.2	7,097,207.59	21.1	657,607.42	35.07	425,953.00	22.39
7.1 Services	-	-	-	-	1,902,687.28	5.7	1,674,960.88	5.0	160,115.73	8.54	178,984.00	9.41
7.2 Personal	2,978,522.88	9.6	3,144,849.50	9.7	3,085,420.24	9.2	3,122,609.25	9.3	354,352.00	18.90	84,800.00	4.46
7.3 GOL	635,600.00	2.1	947,569.50	2.9	936,942.00	2.8	917,183.50	2.7	737.00	0.04	298.00	0.02
7.4 Central Bank of Liberia	-	-	-	-	-	-	-	-	-	-	-	-
7.5 Public Corporations	259,838.00	0.8	261,210.50	0.8	262,877.00	0.8	258,999.50	0.8	10,391.00	0.55	11,848.00	0.62
7.6 Others	1,367,617.55	4.4	1,636,257.98	5.1	1,231,129.08	3.7	1,123,454.46	3.3	132,011.69	7.04	150,023.00	7.89
TOTAL	30,931,620.17	100.0	32,296,739.74	100.0	33,426,397.17	100.0	33,556,633.74	100.0	1,875,224.24	100.00	1,902,288.00	100.00

Source: Central Bank of Liberia, Monrovia, Liberia.

MONEY AND BANKING

1.4b: Commercial Banks' Loans By Economic Sector - 2016

Thousands of Liberian Dollars

CENTRAL BANK OF LIBERIA

Sector	Jan-16		Feb-16		Mar-16		Apr-16		May-16		Jun-16	
	L\$	%	L\$	%	L\$	%	L\$	%	L\$	%	L\$	%
1. Agriculture	2,644,108.80	7.54	2,489,484.25	7.09	2,437,390.00	6.93	3,001,435.53	8.34	2,283,454.67	6.88	2,433,806.71	6.93
1.1 Rubber	834,128.71	2.38	709,148.36	2.02	503,281.65	1.43	537,298.97	1.49	528,828.56	1.59	395,980.55	1.13
1.2 Forestry	466,210.93	1.33	465,897.62	1.33	363,813.62	1.03	934,310.16	2.60	305,888.16	0.92	480,342.56	1.37
1.3 Fishery	441,963.63	1.26	451,323.50	1.29	485,894.50	1.38	423,553.50	1.18	470,403.50	1.42	416,367.00	1.19
1.4 Others	901,805.52	2.57	863,114.77	2.46	1,084,400.23	3.08	1,106,272.90	3.08	978,334.46	2.95	1,141,116.61	3.25
2. Mining & Quarrying	144,692.44	0.41	159,823.00	0.46	148,329.50	0.42	166,255.50	0.46	709,033.50	2.13	586,942.50	1.97
2.1 Iron Ore	-	-	-	-	-	-	10,156.50	0.03	554,398.50	1.67	532,885.50	1.52
2.2 Quarrying	144,692.44	0.41	159,823.00	0.46	148,329.50	0.42	156,099.00	0.43	154,635.00	0.47	52,920.00	0.15
2.3 Others	-	-	-	-	-	-	-	-	-	-	1,137.00	0.30
3. Manufacturing	1,212,609.29	3.46	1,175,546.23	3.35	1,132,265.29	3.22	1,270,705.35	3.53	1,065,399.76	3.21	1,083,574.17	3.09
4. Construction	5,567,200.57	15.88	5,579,780.74	15.90	5,349,453.91	15.21	5,513,245.74	15.33	5,183,133.59	15.61	5,611,596.20	15.99
4.1 Mortgage Loans	1,053,528.57	3.01	1,062,298.25	3.03	254,648.00	0.72	737,743.46	2.05	712,824.28	2.15	273,754.22	0.78
4.2 Home Improvement	53,801.51	0.15	64,707.50	0.18	54,933.50	0.16	52,887.00	0.15	59,292.00	0.18	77,962.50	0.22
4.3 Road Construction	1,656,519.00	4.73	2,014,004.00	5.74	0.00	0.00	1,293,535.50	3.60	1,120,229.00	3.37	-	-
4.4 Others	2,803,351.50	8.00	2,438,770.99	6.95	5,039,872.42	14.33	3,429,079.79	9.53	3,290,788.31	9.91	5,259,879.49	14.98
5. Trans., Storage & Comm.	2,799,799.68	7.99	2,635,369.79	7.51	2,611,067.35	7.42	2,282,579.60	6.34	2,454,880.96	7.39	2,384,510.09	6.79
5.1 Transportation	609,631.22	1.74	609,709.72	1.74	642,347.55	1.83	598,306.74	1.66	586,534.26	1.77	513,495.66	1.46
5.2 Storage	-	-	-	-	-	-	-	-	-	-	-	-
5.3 Oil & Gas	452,681.00	1.29	447,251.00	1.27	444,536.00	1.26	212,005.50	0.59	451,552.50	1.36	456,151.50	1.30
5.4 Communication	1,737,487.46	4.96	1,578,409.07	4.50	1,524,183.81	4.33	1,472,267.37	4.09	1,416,794.20	4.27	1,414,862.94	4.03
6. Trade, Hotel & Rest.	14,932,757.99	42.59	14,986,804.79	42.70	14,634,791.15	41.60	14,505,415.64	40.32	12,901,421.12	38.84	13,729,405.16	39.11
6.1 Diamond trade	81,718.79	0.23	73,732.16	0.21	606,744.58	1.72	87,814.38	0.24	-	-	-	-
6.2 Other trade	14,334,442.74	40.89	14,400,250.01	41.03	13,642,047.31	38.78	13,998,167.47	38.91	12,114,875.14	36.48	13,315,210.10	37.93
6.3 Hotels	409,395.66	1.17	398,252.03	1.13	318,063.42	0.90	345,072.24	0.96	647,861.98	1.95	363,593.48	1.04
6.4 Restaurants	107,200.80	0.31	114,570.60	0.33	67,935.85	0.19	74,361.55	0.21	138,684.01	0.42	50,601.59	0.14
7. Others	7,756,988.01	22.13	8,072,805.30	23.00	8,864,861.92	25.20	9,235,689.57	25.67	8,615,252.42	25.94	9,273,226.57	26.42
7.1 Services	2,042,700.42	5.83	1,990,632.57	5.67	2,422,830.46	6.89	2,502,718.78	6.96	2,006,123.71	6.04	2,424,670.79	6.91
7.2 Personal	3,296,198.35	9.40	3,556,903.22	10.13	3,931,700.37	11.18	4,107,408.37	11.42	3,774,564.00	11.36	4,139,520.50	11.79
7.3 GOL	845,722.50	2.41	825,052.50	2.35	778,037.50	2.21	757,733.50	2.11	729,840.00	2.20	720,892.00	2.05
7.4 Central Bank of Liberia	-	-	-	-	-	-	-	-	-	-	-	-
7.5 Public Corporations	250,421.54	0.71	242,114.00	0.69	243,132.00	0.69	245,608.50	0.68	245,415.00	0.74	253,226.00	0.72
7.6 Others	1,321,945.20	3.77	1,458,103.02	4.15	1,489,161.60	4.23	1,622,220.43	4.51	1,859,309.71	5.60	1,734,917.28	4.94
TOTAL	35,058,156.77	100.00	35,099,614.10	100.00	35,178,159.11	100.00	35,975,326.92	100.00	33,212,576.01	100.00	35,101,924.39	100.00

Source : Central Bank of Liberia, Monrovia, Liberia.

MONEY AND BANKING

CENTRAL BANK OF LIBERIA

1.4b: Commercial Banks' Loans By Economic Sector - 2016 Cont.

Thousands of Liberian Dollars

Sector	Jul-16		Aug-16		Sep-16		Oct-16		Nov-16		Dec-16	
	L\$	%	L\$	%	L\$	%	L\$	%	L\$	%	L\$	%
1. Agriculture	2,412,958.65	6.99	3,070,131.20	8.32	2,774,993.47	7.40	2,521,284.47	6.67	1,674,034.46	4.27	1,793,905.06	4.40
1.1 Rubber	456,864.21	1.32	623,109.27	1.69	748,655.65	2.00	543,185.25	1.44	508,438.72	1.30	354,325.09	0.87
1.2 Forestry	405,419.74	1.17	804,768.90	2.18	416,617.50	1.11	352,975.50	0.93	126,001.26	0.32	410,866.13	1.01
1.3 Fishery	375,950.00	1.09	502,640.50	1.36	1,189,010.32	3.17	465,905.00	1.23	474,616.99	1.21	444,177.79	1.09
1.4 Others	1,174,724.71	3.40	1,139,612.53	3.09	420,710.00	1.12	1,159,218.72	3.07	564,977.49	1.44	584,536.05	1.44
2. Mining & Quarrying	621,494.50	1.80	173,550.00	0.47	160,193.50	0.43	631,779.00	1.67	32,537.34	0.08	47,931.05	0.12
2.1 Iron Ore	471,894.50	1.37	6,630.00	0.02	105,886.00	0.28	468,367.50	1.24	-	-	-	-
2.2 Quarrying	52,360.00	0.15	54,502.50	0.15	54,307.50	0.14	163,411.50	0.43	32,537.34	0.08	47,931.05	0.12
2.3 Others	97,240.00	0.28	112,417.50	0.30	-	-	-	-	-	-	-	-
3. Manufacturing	1,169,039.20	3.39	1,287,652.58	3.49	1,388,602.58	3.70	1,262,762.55	3.34	441,572.36	1.13	2,193,867.67	5.39
4. Construction	5,500,172.87	15.93	5,712,389.52	15.48	5,715,215.90	15.23	5,684,246.59	15.05	5,023,508.80	12.80	4,330,616.48	10.63
4.1 Mortgage Loans	260,689.22	0.75	356,371.98	0.97	525,824.45	1.40	893,762.19	2.37	57,088.43	0.15	54,571.60	0.13
4.2 Home Improvement	67,881.00	0.20	584,220.00	1.58	454,252.50	1.21	96,037.50	0.25	287,125.10	0.73	151,457.61	0.37
4.3 Road Construction	0.00	0.00	2,156,418.50	5.84	2,151,630.50	5.74	2,167,759.00	5.74	1,383,319.07	3.52	60,808.23	0.15
4.4 Others	5,171,602.65	14.98	2,615,379.04	7.09	2,583,508.45	6.89	2,526,687.91	6.69	3,295,976.20	8.40	4,063,779.05	9.98
5. Trans., Storage & Comm.	2,340,512.45	6.78	2,818,534.46	7.64	3,075,082.00	8.20	2,246,336.13	5.95	1,738,230.39	4.43	2,521,490.59	6.19
5.1 Transportation	459,172.04	1.33	883,663.14	2.39	916,044.23	2.44	898,494.61	2.38	258,137.88	0.66	701,145.44	1.72
5.2 Storage	-	-	-	-	-	-	-	-	-	-	4,944.25	0.01
5.3 Oil & Gas	451,324.50	1.31	484,770.00	1.31	921,180.00	2.46	283,187.50	0.75	1,175,351.15	2.99	1,466,070.73	3.60
5.4 Communication	1,430,015.91	4.14	1,450,101.33	3.93	1,237,857.78	3.30	1,064,654.02	2.82	304,741.36	0.78	349,330.18	0.86
6. Trade, Hotel & Rest.	13,528,116.20	39.18	14,685,103.78	39.80	14,505,425.25	38.66	15,289,494.69	40.47	15,281,249.49	38.93	11,473,883.50	28.17
6.1 Diamond trade	-	-	-	-	-	-	-	-	99,968.22	0.25	19,508.83	0.05
6.2 Other trade	13,047,109.97	37.78	14,077,660.50	38.15	13,930,630.50	37.13	14,803,699.50	39.19	14,821,107.01	37.76	10,717,450.73	26.31
6.3 Hotels	393,462.96	1.14	465,300.58	1.26	479,703.93	1.28	438,276.19	1.16	232,120.08	0.59	638,186.15	1.57
6.4 Restaurants	87,543.28	0.25	142,142.70	0.39	95,090.83	0.25	47,519.01	0.13	94,149.44	0.24	98,737.80	0.24
7. Others	8,959,531.43	25.95	9,151,130.96	24.80	9,897,832.42	26.38	10,142,431.90	26.85	15,014,349.49	38.25	18,366,617.59	45.10
7.1 Services	2,370,726.67	6.87	2,298,182.62	6.23	3,709,908.75	9.89	2,782,717.80	7.37	1,370,290.20	3.49	1,361,306.68	3.34
7.2 Personal	3,284,136.74	9.51	3,350,396.90	9.08	3,192,643.80	8.51	4,427,655.88	11.72	2,800,079.87	7.13	5,040,414.41	12.38
7.3 GOL	680,836.50	1.97	677,696.00	1.84	665,914.50	1.77	644,885.00	1.71	0.00	-	-	-
7.4 Central Bank of Liberia	-	-	-	-	-	-	-	-	-	-	-	-
7.5 Public Corporations	739,470.50	2.14	1,333,137.58	3.61	598,371.55	1.59	387,699.00	1.03	33,904.74	0.09	40,604.72	0.10
7.6 Others	1,884,361.03	5.46	1,491,717.87	4.04	1,730,993.82	4.61	1,899,474.22	5.03	10,810,074.68	27.54	11,924,291.78	29.28
TOTAL	34,531,825.29	100.00	36,898,492.48	100.00	37,517,345.10	100.00	37,778,335.32	100.00	39,249,266.07	100.00	40,728,311.93	100.00

MONEY AND BANKING

CENTRAL BANK OF LIBERIA

1.4c. Commercial Bank's Loan by Economic Sector - 2017

In Thousands of Liberian Dollars

Sector	Jan-17		Feb-17		Mar-17		Apr-17		May-17		Jun-17	
	Amount	Share	Amount	Share	Amount	Share	Amount	Share	Amount	Share	Amount	Share
1.0 AGRICULTURE	1,458,709.55	3.59	1,755,194.43	4.14	1,454,959.09	3.37	1,005,218.30	2.27	1,382,603.64	2.93	1,328,014.05	2.78
1.1 Fishery	321,647.87	0.79	355,257.30	0.84	238,319.12	0.55	-	-	255,632.19	0.54	448,382.55	0.94
1.2 Rubber	288,606.80	0.71	227,490.05	0.54	333,186.17	0.77	359,413.14	0.81	485,983.36	1.03	83,119.47	0.17
1.3 Forestry	331,602.54	0.82	608,436.25	1.44	344,444.57	0.80	330,670.24	0.75	78,657.14	0.17	103,129.78	0.22
1.4 Others	516,852.35	1.27	564,010.83	1.33	539,009.23	1.25	315,134.92	0.71	562,330.95	1.19	693,382.25	1.45
2.0 EXTRACTIVE	181,648.37	0.45	79,385.46	0.19	215,373.83	0.50	200,493.68	0.45	113,493.30	0.24	170,614.35	0.36
2.1 Iron ore	-	-	-	-	-	-	-	-	-	-	-	-
2.2 Diamond	-	-	18,003.37	0.04	90,503.92	0.21	49,375.86	0.11	31,475.65	0.07	31,474.11	0.07
2.3 Gold	-	-	-	-	-	-	-	-	-	-	4,125.00	0.01
2.4 Quarrying	132,474.85	0.33	16,874.76	0.04	95,348.47	0.22	114,035.84	0.26	81,050.93	0.17	88,791.95	0.19
2.5 Others	49,173.52	0.12	44,507.33	0.11	29,521.44	0.07	37,081.98	0.08	966.72	0.00	46,223.29	0.10
3.0 MANUFACTURING	1,012,806.66	2.49	579,337.11	1.37	677,811.32	1.57	587,214.32	1.32	724,222.13	1.53	515,774.81	1.08
3.1 Furniture	7,298.28	0.02	2,720.11	0.01	1,826.24	0.00	6,222.03	0.01	2,292.59	0.00	2,234.96	0.00
3.2 Beverages	64,582.44	0.16	65,441.44	0.15	236,578.16	0.55	54,333.50	0.12	286,279.73	0.61	61,284.61	0.13
3.3 Equipment	88,921.52	0.22	4,404.53	0.01	6,004.65	0.01	5,799.01	0.01	7,672.29	0.02	7,321.72	0.02
3.4 Others	852,004.42	2.10	506,771.03	1.20	433,402.27	1.00	520,859.78	1.17	427,977.52	0.91	444,933.52	0.93
4.0 CONSTRUCTION	5,057,288.20	12.44	4,077,487.42	9.62	4,546,894.93	10.54	5,147,329.03	11.61	4,885,942.26	10.35	5,133,978.92	10.76
4.1 Commercial	1,446.47	0.00	61,887.22	0.15	7,791.65	0.02	14,473.56	0.03	9,034.03	0.02	739.30	0.00
4.2 Home mortgage	617,373.63	1.52	354,893.40	0.84	447,058.48	1.04	534,830.96	1.21	456,122.27	0.97	421,520.54	0.88
4.3 Road construction	1,194,830.20	2.94	1,178,486.84	2.78	1,687,120.45	3.91	1,726,001.02	3.89	203,036.47	0.43	160,696.50	0.34
4.4 Other construction	3,243,637.90	7.98	2,482,219.96	5.86	2,404,924.35	5.57	2,872,023.49	6.48	4,217,749.49	8.93	4,551,022.58	9.54
5.0 SERVICES	2,091,036.47	5.14	2,835,812.13	6.69	5,641,351.83	13.07	5,496,315.60	12.40	5,248,728.31	11.12	4,472,286.31	9.38
5.1 Transportation	440,474.54	1.08	621,448.89	1.47	872,537.68	2.02	934,398.43	2.11	522,909.34	1.11	312,008.66	0.65
5.2 Storage	10,179.03	0.03	-	-	-	-	4,167.88	0.01	4,207.60	0.01	4,191.92	0.01
5.3 Communication	224,567.44	0.55	376,662.40	0.89	593,599.29	1.38	619,546.14	1.40	732,872.75	1.55	70,855.47	0.15
5.4 Hotels	420,138.46	1.03	325,697.87	0.77	251,257.88	0.58	192,404.17	0.43	260,059.78	0.55	239,774.91	0.50
5.5 Bar and restaurant	72,710.98	0.18	94,957.58	0.22	83,937.55	0.19	58,569.47	0.13	78,554.93	0.17	81,644.14	0.17
5.6 Other services	922,966.03	2.27	1,417,045.39	3.34	3,840,019.43	8.90	3,687,229.51	8.32	3,650,123.91	7.73	3,763,811.21	7.89
6.0 TRADE	30,864,811.41	75.90	33,042,886.05	77.99	30,618,176.98	70.95	16,097,109.24	36.31	15,961,380.96	33.81	8,512,245.92	17.85
6.1 Diamond	30,887.07	0.08	1,828.25	0.00	929.76	0.00	296.80	0.00	-	-	-	-
6.2 Gold	283,563.89	0.70	-	-	323,211.20	0.75	-	-	337,659.33	0.72	621.36	0.00
6.3 Other trade	15,307,289.86	37.64	10,376,079.17	24.49	14,093,748.13	32.66	16,096,812.44	36.31	15,623,721.63	33.09	8,511,624.56	17.84
6.4 Personal	2,941,153.19	7.23	3,155,442.57	7.45	7,816,461.82	18.11	6,895,426.75	15.55	11,078,774.20	23.47	20,122,541.76	42.19
6.5 GOL	7,576.25	0.02	2,060.00	0.00	408,374.72	0.95	397,615.54	0.90	709,102.90	1.50	5,040.82	0.01
6.6 Central Bank of	-	-	-	-	-	-	-	-	-	-	-	-
6.7 Public Corporations	66,258.23	0.16	-	-	158,230.80	0.37	85,300.32	0.19	367,497.88	0.78	16,824.16	0.04
6.8 Oil and Gas	1,244,177.75	3.06	1,437,110.82	3.39	1,535,677.68	3.56	1,259,400.98	2.84	1,617,644.91	3.43	809,683.77	1.70
6.9 Others	10,983,905.20	27.01	18,070,365.24	42.65	6,281,542.87	14.56	7,161,053.43	16.15	5,122,872.34	10.85	6,612,977.25	13.86
TOTAL	40,666,300.64	100.00	42,370,102.60	100.00	43,154,567.98	100.00	44,332,477.19	100.00	47,212,262.83	100.00	47,699,982.12	100.00

MONEY AND BANKING

CENTRAL BANK OF LIBERIA

1.5: Commercial Banks' Interest Rates: 2015-2017

2015	Jan-15	Feb-15	Mar-15	Apr-15	May-15	Jun-15
Average Lending Rate	13.61	13.65	13.68	13.30	13.70	13.55
Average Personal Loan Rate	14.13	14.18	14.12	14.09	14.09	14.07
Average Mortgage Rate	14.40	14.24	14.36	14.37	14.50	14.43
Average Time Deposit Rate	4.00	3.93	3.80	3.70	3.13	4.40
Average Savings Rate	2.00	2.01	2.00	2.00	2.00	2.00
Average Rate on CDs	2.00	2.00	2.00	2.00	2.00	2.00
	Jul-15	Aug-15	Sep-15	Oct-15	Nov-15	Dec-15
Average Lending Rate	13.72	13.67	13.36	13.70	13.67	13.67
Average Personal Loan Rate	14.07	14.21	14.03	14.02	13.94	13.94
Average Mortgage Rate	14.42	14.82	14.48	14.47	15.00	14.45
Average Time Deposit Rate	4.60	3.16	4.09	4.80	4.50	4.50
Average Savings Rate	2.01	1.99	2.00	2.01	2.00	2.00
Average Rate on CDs	2.00	2.00	2.00	2.00	2.00	2.00
	Jan-16	Feb-16	16-Mar	16-Apr	16-May	16-Jun
Average Lending Rate	13.68	13.63	13.55	13.58	13.64	13.50
Average Personal Loan Rate	13.96	13.89	13.85	14.63	14.68	13.26
Average Mortgage Rate	14.99	14.60	14.49	15.00	14.95	12.40
Average Time Deposit Rate	4.40	4.24	3.80	4.40	3.65	2.67
Average Savings Rate	2.00	2.00	2.01	2.01	2.02	2.02
Average Rate on CDs	2.00	2.00	2.00	2.00	2.00	2.00
	Jul-16	Aug-16	Sep-16	Oct-16	16-Nov	Dec-16
Average Lending Rate	13.68	13.65	13.65	13.69	13.28	13.61
Average Personal Loan Rate	13.96	13.76	14.72	13.81	12.79	14.51
Average Mortgage Rate	14.49	12.19	14.50	14.56	12.79	12.15
Average Time Deposit Rate	3.81	3.80	3.90	3.40	3.41	4.70
Average Savings Rate	2.01	2.01	2.02	2.01	2.20	2.02
Average Rate on CDs	2.00	2.00	2.00	2.00	3.57	2.00
	Jan-17	Feb-17	Mar-17	Apr-17	May-17	Jun-17
Average Lending Rate	13.39	13.00	13.28	13.28	13.28	13.28
Average Personal Loan Rate	12.95	13.20	12.94	12.94	12.94	12.94
Average Mortgage Rate	13.28	13.10	13.17	13.39	13.39	13.39
Average Time Deposit Rate	3.10	3.60	3.25	3.66	3.53	3.53
Average Savings Rate	2.02	2.20	2.20	2.20	2.20	2.20
Average Rate on CDs	2.00	3.40	2.25	2.25	3.00	3.00

Note: CDs-Certificate of Deposits

Source : Central Bank of Liberia, Monrovia, Liberia.

MONEY AND BANKING

CENTRAL BANK OF LIBERIA

1.6: Liberian Dollar Exchange Rates - Period Averages: 2015- 2017
(Liberian dollar per US dollar)

Period 2015	Large bills ²		
	Buy	Sell	Middle ²
Jan	83.63	84.63	84.13
Feb	84.00	85.00	84.50
Mar	84.00	85.00	84.50
Apr	84.00	85.00	84.50
May	84.00	85.00	84.50
Jun	84.77	85.77	85.27
Jul	86.19	87.19	86.69
Aug	87.73	88.73	88.23
Sep	87.38	88.38	87.88
Oct	87.56	88.56	88.06
Nov	87.00	88.00	87.50
Dec	88.00	89.00	88.50
Quarter 1	83.88	84.88	84.38
Quarter 2	84.26	85.26	84.76
Quarter 3	87.10	88.10	87.60
Quarter 4	87.52	88.52	88.02

Period 2016	Large bills ¹		
	Buy	Sell	Middle ²
Jan	89.00	90.00	89.50
Feb	90.00	91.00	90.50
Mar	90.00	91.00	90.50
Apr	90.92	91.92	91.42
May	90.92	91.92	91.42
Jun	92.42	93.42	92.92
Jul	94.15	95.15	94.65
Aug	95.81	96.81	96.31
Sep	97.00	98.00	97.50
Oct	97.92	98.92	98.42
Nov	99.08	100.08	99.58
Dec	100.30	101.30	100.80
Quarter 1	89.67	90.67	90.17
Quarter 2	91.42	92.42	91.92
Quarter 3	95.65	96.65	96.15
Quarter 4	99.10	100.10	99.60

Period 2017	Large bills ¹		
	Buy	Sell	Middle ²
Jan	102.77	103.77	103.27
Feb	101.67	102.67	102.17
Mar	103.52	104.52	104.02
Apr	105.64	106.64	106.14
May	109.62	110.54	110.08
Jun	112.48	113.19	112.84
Quarter 1	102.65	103.65	103.15
Quarter 2	109.25	110.12	109.69

²Average of buying and selling rates.

Source : Central Bank of Liberia, Monrovia, Liberia.

MONEY AND BANKING**CENTRAL BANK OF LIBERIA****1.7: Liberian Dollar Exchange Rates - End of Period: 2015- 2017**
(Liberian dollars per US dollar)

Months	2015	2016	2017
Jan	84.50	90.50	104.50
Feb	84.50	90.50	103.50
Mar	84.50	90.50	104.50
Apr	84.50	91.50	106.50
May	84.50	91.50	111.47
Jun	85.50	94.50	113.13
Jul	87.50	93.50	
Aug	88.50	97.50	
Sep	88.50	97.50	
Oct	87.50	98.50	
Nov	87.50	100.50	
Dec	88.50	102.50	

Source : Central Bank of Liberia, Monrovia, Liberia.

MONEY AND BANKING

CENTRAL BANK OF LIBERIA

1.8a: Liberian Dollar Exchange Rates Jan.-Feb., 2017
(Liberian dollar per US dollar)

Period	Large bills ¹			Period	Large bills ¹		
	Buy	Sell	Middle ²		Buy	Sell	Middle ²
Jan				Feb			
2	102.00	103.00	102.50	1	104.00	105.00	104.50
3	102.00	103.00	102.50	2	100.00	101.00	100.50
4	102.00	103.00	102.50	3	100.00	101.00	100.50
5	102.00	103.00	102.50	4	100.00	101.00	100.50
6	102.00	103.00	102.50	6	100.00	101.00	100.50
7	102.00	103.00	102.50	7	100.00	101.00	100.50
9	102.00	103.00	102.50	8	100.00	101.00	100.50
10	102.00	103.00	102.50	9	100.00	101.00	100.50
11	102.00	103.00	102.50	10	101.00	102.00	101.50
12	102.00	103.00	102.50	11	101.00	102.00	101.50
13	102.00	103.00	102.50	13	101.00	102.00	101.50
14	102.00	103.00	102.50	14	102.00	103.00	102.50
16	102.00	103.00	102.50	15	102.00	103.00	102.50
17	102.00	103.00	102.50	16	102.00	103.00	102.50
18	103.00	104.00	103.50	17	102.00	103.00	102.50
19	103.00	104.00	103.50	18	102.00	103.00	102.50
20	103.00	104.00	103.50	20	102.00	103.00	102.50
21	103.00	104.00	103.50	21	103.00	104.00	103.50
23	104.00	105.00	104.50	22	103.00	104.00	103.50
24	104.00	105.00	104.50	23	103.00	104.00	103.50
25	104.00	105.00	104.50	24	103.00	104.00	103.50
26	104.00	105.00	104.50	25	103.00	104.00	103.50
27	104.00	105.00	104.50	27	103.00	104.00	103.50
28	104.00	105.00	104.50	28	103.00	104.00	103.50
30	104.00	105.00	104.50				
31	104.00	105.00	104.50				
Period Average	102.77	103.77	103.27	Period Average	101.67	102.67	102.17

1. US dollar bank notes of denominations 5 and higher.

2. Average of buying and selling rates.

Source: Central Bank of Liberia, Monrovia, Liberia.

MONEY AND BANKING

CENTRAL BANK OF LIBERIA

1.8b: Liberian Dollar Exchange Rates Mar - Apr., 2017

(Liberian dollar per US dollar)

Period	Large bills ¹			Period	Large bills ¹		
	Buy	Sell	Middle ²		Buy	Sell	Middle ²
Mar				Apr			
1	103.00	104.00	103.50	1	104.00	105.00	104.50
2	103.00	104.00	103.50	3	104.00	105.00	104.50
3	103.00	104.00	103.50	4	105.00	106.00	105.50
4	103.00	104.00	103.50	5	105.00	106.00	105.50
6	103.00	104.00	103.50	6	105.00	106.00	105.50
7	103.00	104.00	103.50	7	105.00	106.00	105.50
8	103.00	104.00	103.50	8	105.00	106.00	105.50
9	103.00	104.00	103.50	10	106.00	107.00	106.50
10	103.00	104.00	103.50	11	106.00	107.00	106.50
11	103.00	104.00	103.50	12	106.00	107.00	106.50
13	103.00	104.00	103.50	13	106.00	107.00	106.50
14	103.00	104.00	103.50	14	106.00	107.00	106.50
15	103.00	104.00	103.50	15	106.00	107.00	106.50
16	104.00	105.00	104.50	17	106.00	107.00	106.50
17	104.00	105.00	104.50	18	106.00	107.00	106.50
18	104.00	105.00	104.50	19	106.00	107.00	106.50
20	104.00	105.00	104.50	20	106.00	107.00	106.50
21	104.00	105.00	104.50	21	106.00	107.00	106.50
22	104.00	105.00	104.50	22	106.00	107.00	106.50
23	104.00	105.00	104.50	24	106.00	107.00	106.50
24	104.00	105.00	104.50	25	106.00	107.00	106.50
25	104.00	105.00	104.50	26	106.00	107.00	106.50
27	104.00	105.00	104.50	27	106.00	107.00	106.50
28	104.00	105.00	104.50	28	106.00	107.00	106.50
29	104.00	105.00	104.50	29	106.00	107.00	106.50
30	104.00	105.00	104.50				
31	104.00	105.00	104.50				
Period Average	103.52	104.52	104.02	Period Average	105.64	106.64	106.14

1. US dollar bank notes of denominations 5 and higher.

2. Average of buying and selling rates.

Source: Central Bank of Liberia, Monrovia, Liberia.

MONEY AND BANKING

CENTRAL BANK OF LIBERIA

1.8b: Liberian Dollar Exchange Rates May - Jun., 2017

(Liberian dollar per US dollar)

Period	Large bills ¹			Period	Large bills ¹		
	Buy	Sell	Middle ²		Buy	Sell	Middle ²
May				Jun			
1	107.81	108.63	108.22	1	111.20	111.86	111.53
2	107.82	108.64	108.23	2	111.36	112.02	111.69
3	107.76	108.88	108.32	3	111.39	112.05	111.72
4	108.27	109.39	108.83	5	111.88	112.58	112.23
5	108.36	109.48	108.92	6	112.08	112.78	112.43
6	108.42	109.56	108.99	7	112.28	112.98	112.63
8	108.35	109.55	108.95	8	112.42	113.13	112.78
9	108.81	109.97	109.39	9	112.56	113.29	112.93
10	108.92	109.87	109.40	10	112.57	113.30	112.94
11	109.48	110.36	109.92	12	112.73	113.47	113.10
12	109.40	110.79	110.10	13	112.75	113.46	113.11
13	109.48	110.36	109.92	14	112.75	113.46	113.11
16	109.26	110.35	109.81	15	112.75	113.46	113.11
17	108.96	110.26	109.61	16	112.75	113.46	113.11
18	110.22	111.01	110.62	17	112.75	113.46	113.11
19	110.45	111.18	110.82	19	112.75	113.46	113.11
20	110.49	111.23	110.86	20	112.75	113.46	113.11
22	110.67	111.38	111.03	21	112.75	113.46	113.11
23	110.72	111.41	111.07	22	112.75	113.46	113.11
24	110.86	111.58	111.22	23	112.75	113.46	113.11
25	110.86	111.59	111.23	24	112.75	113.46	113.11
26	110.86	111.60	111.23	26	112.77	113.48	113.13
27	110.86	111.63	111.25	27	112.78	113.47	113.13
29	110.98	111.70	111.34	28	112.76	113.45	113.11
30	110.99	111.70	111.35	29	112.77	113.48	113.13
31	111.12	111.81	111.47	30	112.77	113.49	
Period Average	109.62	110.54	110.08	Period Average	112.48	113.19	108.48

1. US dollar bank notes of denominations 5 and higher.

2. Average of buying and selling rates.

Source: Central Bank of Liberia, Monrovia, Liberia.

MONEY AND BANKING

CENTRAL BANK OF LIBERIA

1.9: Commercial Banks' Inflows and Outflows: 2014 - 2016

(Thousands of United States Dollars)

Commercial Banks' Inflows and Outflows - 2014								
	Jan-14	Feb-14	Mar-14	Apr-14	May-14	Jun-14	Jan-Jun Total	
Inflows	110,781.00	103,834.00	95,772.13	110,441.26	112,206.00	92,062.28	625,096.67	
Of which workers' remittance	40,179.00	35,443.00	42,883.00	39,873.00	44,021.00	28,862.00	231,261.00	
Outflows	182,196.00	144,044.00	102,746.02	144,345.93	133,686.00	129,759.10	836,777.05	
Of which workers' remittance	22,139	56,506	20,821	18,962	25,623	21,092	165,143.00	
Commercial Banks' Inflows and Outflows - 2014								
	Jul-14	Aug-14	Sep-14	Oct-14	Nov-14	Dec-14	Jul-Dec Total	Annual Total
Inflows	109,488.00	110,157.00	154,222.83	126,719.09	113,032.88	165,940.94	779,560.74	1,404,657.40
Of which workers' remittance	33,173.00	43,070.00	32,752.00	41,407.00	41,180.00	50,190.00	241,772.00	473,033.00
Outflows	139,974.00	139,281.00	115,570.16	112,848.37	134,537.00	131,951.00	774,161.53	1,610,938.58
Of which workers' remittance	26,477.00	21,138.00	20,140.00	21,232.00	22,963.00	22,119.00	134,069.00	299,212.00
Commercial Banks' Inflows and Outflows - 2015								
	Jan-15	Feb-15	Mar-15	Apr-15	May-15	Jun-15	Jan-Jun Total	
Inflows	147,527.00	139,876.00	148,846.00	155,069.00	140,116.97	124,975.18	856,410.15	
Of which workers' remittance	50,039.00	41,972.00	52,784.00	99,578.00	42,865.00	34,507.00	321,745.00	
Outflows	142,683.00	95,256.00	150,075.00	137,116.32	138,936.88	123,859.47	787,926.66	
Of which workers' remittance	24,528.00	17,797	18,311	66,554	19,977	18,917	166,084.00	
Commercial Banks' Inflows and Outflows - 2015								
	Jul-15	Aug-15	Sep-15	Oct-15	Nov-15	Dec-15	Jul-Dec Total	Annual Total
Inflows	144,541.00	103,292.00	137,646.00	105,707.00	105,416.43	140,113.29	736,715.72	1,593,125.87
Of which workers' remittance	71,770.00	43,159.00	44,434.00	29,771.00	33,927.00	70,485.00	293,546.00	615,291.00
Outflows	133,886.00	119,460.00	153,776.00	124,074.00	95,901.11	118,551.75	745,648.86	1,533,575.52
Of which workers' remittance	25,881.00	17,273.00	19,852.00	22,022.00	21,260.00	20,918.00	127,206.00	293,290.00
Commercial Banks' Inflows and Outflows - 2016								
	Jan-16	Feb-16	Mar-16	Apr-16	May-16	Jun-16	Jan-Jun Total	
Inflows	107,842.00	102,434.00	133,564.00	110,282.00	109,966.00	101,275.00	665,363.00	
Of which workers' remittance	44,844.00	42,807.00	46,705.00	52,827.00	47,351.00	29,107.00	263,641.00	
Outflows	108,891.00	91,454.00	124,408.00	112,929.00	105,304.00	104,048.00	647,034.00	
Of which workers' remittance	16,723.00	15,625.00	26,582.00	26,828.00	24,128.00	21,582.00	131,468.00	
Commercial Banks' Inflows and Outflows - 2016								
	Jul-16	Aug-16	Sep-16	Oct-16	Nov-16	Dec-16	Jul-Dec Total	Annual Total
Inflows	105,586.00	127,312.00	95,952.00	136,624.00	97,591.62	117,102.85	680,168.47	1,345,531.47
Of which workers' remittance	52,155.00	60,991.00	36,001.00	71,259.00	32,310.24	33,295.57	286,011.81	549,652.81
Outflows	100,889.00	112,122.00	104,898.00	93,817.00	139,687.03	139,553.42	690,966.45	1,338,000.45
Of which workers' remittance	21,554.00	30,747.00	15,972.00	15,113.00	52,273.24	37,452.74	173,111.98	304,579.98
Commercial Banks' Inflows and Outflows - 2017								
	Jan-17	Feb-17	Mar-17	Apr-17	May-17	Jun-17		
Inflows	116,114.00	105,630.00	255,666.00	238,059.00	151,378.01	168,563.36		
Of which workers' remittance	31,557.00	47,405.00	174874*	167286*	38,748.78	54,770.43		
Outflows	106,576.00	96,470.00	155,913.00	142,646.00	138,503.29	147,992.16		
Of which workers' remittance	16,693.00	36,850.00	67,445.00	48,043	33,401.88	46,546		

*March & April 2017 values are provisional

Source : Central Bank of Liberia, Monrovia, Liberia.

MONEY AND BANKING

1.10a Central Bank of Liberia Fx Auction - 2015 & 2016 & Jan. -Jun., 2017

CENTRAL BANK OF LIBERIA

Auction No.	Date	FX Offered for sale by CBL (US\$)	Auction Rate L\$/US	Total Purchased US\$	No. of Accepted Bids	No. of Rejected Bids	Value of Rejected Bids (US\$)	Over/(Under) Subscription (US\$)	Total Value of Bids Submitted by Participating Banks/FX Bureaux (US\$)
434	7-Jan-15	1,500,000.00	82.00	1,500,000.00	100	0	334,150.00	2,928,957.00	4,428,957.00
435	14-Jan-15	1,500,000.00	83.00	1,500,000.00	95	7	54,966.00	2,847,038.50	4,347,038.50
436	21-Jan-15	1,000,000.00	84.00	1,000,000.00	48	8	209,000.00	2,451,073.07	3,451,073.07
437	4-Feb-15	1,500,000.00	84.00	1,500,000.00	64	4	155,000.00	1,722,987.00	3,222,987.00
438	12-Feb-15	1,000,000.00	84.00	1,000,000.00	40	0	80,000.00	820,874.17	1,820,874.17
439	18-Feb-15	1,000,000.00	84.00	1,000,000.00	56	3	95,783.00	1,790,574.46	2,790,574.46
440	25-Feb-15	1,000,000.00	84.00	1,000,000.00	64	0	570,000.00	1,767,300.00	2,767,300.00
441	4-Mar-15	1,000,000.00	84.00	1,000,000.00	50	1	201,000.00	1,112,847.00	2,112,847.00
442	18-Mar-15	1,000,000.00	84.00	1,000,000.00	50	0	130,300.00	1,435,800.00	2,435,800.00
443	25-Mar-15	1,000,000.00	84.00	1,000,000.00	54	1	45,000.00	723,219.00	1,723,219.00
444	1-Apr-15	1,000,000.00	84.00	1,000,000.00	48	0	5,000.00	352,840.00	1,352,840.00
445	15-Apr-15	1,000,000.00	84.00	1,000,000.00	46	0	100,000.00	1,631,500.00	263,500.00
446	22-Apr-15	1,000,000.00	84.00	1,000,000.00	46	0	345,000.00	1,693,580.00	1,693,580.00
447	6-May-15	1,000,000.00	84.00	1,000,000.00	54	0	45,800.00	787,370.00	1,787,370.00
448	20-May-15	1,000,000.00	84.00	1,000,000.00	55	0	263,984.02	1,179,325.02	2,179,325.02
449	3-Jun-15	1,000,000.00	84.00	1,000,000.00	67	0	471,838.00	1,732,757.00	2,732,757.00
450	10-Jun-15	1,000,000.00	84.00	1,000,000.00	54	0	715,000.00	1,431,800.00	243,800.00
451	17-Jun-15	1,000,000.00	84.00	1,000,000.00	63	0	275,000.00	1,597,924.44	2,597,924.44
452	1-Jul-15	750,000.00	85.00	750,000.00	84	18	756,800.00	3,357,835.00	4,107,835.00
453	8-Jul-15	750,000.00	85.00	750,000.00	85	0	830,140.00	3,051,940.00	3,801,940.00
454	15-Jul-15	750,000.00	85.00	750,000.00	72	0	375,000.00	2,857,304.00	3,607,304.00
455	29-Jul-15	750,000.00	86.00	750,000.00	77	1	422,900.00	3,941,250.00	4,691,250.00
456	5-Aug-15	750,000.00	86.00	750,000.00	88	0	207,400.00	3,941,250.00	4,691,250.00
457	12-Aug-15	2,250,000.00	87.00	2,250,000.00	74	9	242,636.63	2,224,313.63	4,474,313.63
458	26-Aug-15	2,000,000.00	87.00	2,000,000.00	97	15	325,935.33	2,381,748.96	4,381,748.96
459	9-Sep-15	2,500,000.00	87.00	2,500,000.00	70	1	-	494,358.63	2,994,358.63
460	24-Sep-15	2,500,000.00	87.00	2,500,000.00	59	3	-	(150,376.37)	2,349,623.63
461	7-Oct-15	1,500,000.00	87.00	1,500,000.00	61	1	16,000.00	698,863.63	2,198,863.63
462	21-Oct-15	1,500,000.00	87.00	1,500,000.00	68	5	757,200.00	892,490.00	2,392,490.00
463	18-Nov-15	1,500,000.00	87.00	1,500,000.00	59	9	137,700.00	1,381,829.00	2,881,829.00
464	9-Dec-15	5,100,000.00	87.00	5,100,000.00	116	4	479,500.00	1,863,395.00	6,963,395.00
Total		39,100,000.00	2,458.00	39,100,000.00	1,937.00	78.00	7,753,132.98	51,669,649.14	86,213,649.14

Auction No.	Date	FX Offered for sale by CBL (US\$)	Auction Rate L\$/US	Total Purchased US\$	No. of Accepted Bids	No. of Rejected Bids	Value of Rejected Bids (US\$)	Over/(Under) Subscription (US\$)	Total Value of Bids Submitted by Participating Banks/FX Bureaux (US\$)
465	20-Jan-16	1,500,000.00	88.00	1,500,000.00	50	5	176,500.00	2,293,405.9	3,793,405.9
466	10-Feb-16	2,000,000.00	89.00	2,000,000.00	81	16	237,500.00	3,650,043.6	5,650,043.6
467	2-Mar-16	2,000,000.00	89.00	2,000,000.00	63	7	885,800.00	3,644,906.00	5,644,906.00
468	6-Apr-16	2,000,000.00	90.00	2,000,000.00	56	11	188,885.00	4,044,265.00	6,044,265.00
469	4-May-16	2,000,000.00	91.00	2,000,000.00	44	15	-	2,773,322.00	4,773,322.00
470	1-Jun-16	2,000,000.00	92.00	2,000,000.00	34	15	-	3,476,714.00	5,476,714.00
471	22-Jun-16	3,000,000.00	92.00	3,000,000.00	37	38	-	4,340,477.00	7,340,477.00
472	6-Jul-16	6,000,000.00	95.00	6,000,000.00	57	10	598,280.00	4,544,525.00	10,544,525.00
473	17-Aug-16	2,000,000.00	96.00	2,000,000.00	46	54	311,200.00	2,831,500.00	4,831,500.00
474	14-Sep-16	2,000,000.00	97.00	2,000,000.00	38	30	5,845,402.00	5,849,902.00	7,849,902.00
Total		24,500,000.00	-	24,500,000.00	506	201	8,243,567.00	31,599,158.53	61,949,060.53

Auction No.	Date	FX Offered for sale by CBL (US\$)	Auction Rate L\$/US	Total Purchased US\$	No. of Accepted Bids	No. of Rejected Bids	Value of Rejected Bids (US\$)	Over/(Under) Subscription (US\$)	Total Value of Bids Submitted by Participating Banks/FX Bureaux (US\$)
475	11-Jan-17	4,966,555.00	102.00	4,966,555.00	44	24	456,444.64	4,586,944.64	9,553,499.64
476	25-Jan-17	1,993,100.00	105.00	1,993,100.00	15	42	-	3,626,004.00	5,619,104.00
477	16-Feb-17	2,995,376.00	103.00	2,995,376.00	49	15	-	1,531,490.00	4,526,866.00
478	22-Mar-17	1,885,000.00	105.00	1,885,000.00	55	5	-	2,165,240.00	4,050,240.00
479	12-Apr-17	2,834,800.00	107.00	2,834,800.00	48	13	-	1,611,975.00	4,446,775.00
480	18-May-17	2,931,900.00	110.00	2,931,900.00	58	2	1,572,390.00	1,582,390.00	4,514,290.00
481	16-Jun-17	2,684,900.00	112.15	2,684,900.00	25	57	-	1,126,800.00	3,811,700.00
Total		20,291,631.00		20,291,631.00	294.00	158.00	2,028,834.64	16,230,843.64	36,522,474.64

Source : Central Bank of Liberia, Monrovia, Liberia.

MONEY AND BANKING

CENTRAL BANK OF LIBERIA

1.10b Central Bank Bills - 2015 - 2017

Auction No.	Date	Maturity Date	Amount offered CBL (LR\$)	Amount Issued CBL (LR\$)	Value of bid(s) Received CBL (LR\$)	Value of bid(s) Processed CBL (LR\$)	Over/(Under) Subscription (LR\$)	No. of Bid(s) Received	No. of Bid(s) Processed	No. of Winning Bid(s)	No. of Prorated Bid(s)	No. of Non-Selected Bid(s)	No. of Rejected Bid(s)	Weighted Average Discount Rate
9	9-Oct-14	9-Apr-15	1,000,000,000.00	1,000,000,000.00	1,240,000,000.00	1,240,000,000.00	240,000,000.00	17	17	16	1	1	0	7.05
10	20-Jan-15	21-Jul-15	1,500,000,000.00	1,165,000,000.00	1,165,000,000.00	1,165,000,000.00	(335,000,000.00)	17	17	17	0	0	0	6.43
11	14-Aug-15	12-Feb-16	2,000,000,000.00	1,592,000,000.00	1,592,000,000.00	1,592,000,000.00	(408,000,000.00)	14	14	14	0	0	0	6.58
Total			4,500,000,000.00	3,757,000,000.00	3,997,000,000.00	3,997,000,000.00	(503,000,000.00)	48	48	47	1	1	-	20.06

1.10c Government of Liberia Treasury Bills Auction - 2015 - 2016

Auction No.	Date	Maturity Date	Amount Offered GOL (LR\$)	Amount Issued GOL (LR\$)	Value of bid(s) Received	Value of bids processed	Over/(Under) Subscription (LR\$)	No. of Bid(s) Received	No. of Bid(s) Processed	No. of Winning Bid(s)	No. of Prorated Bid(s)	No. of Non-Selected Bid(s)	No. of Rejected Bid(s)	Weighted Average Discount Rate (%)
22	2-Jan-15	2-Apr-15	82,500,000.00	82,500,000.00	144,250,000.00	144,250,000.00	61,750,000.00	16	16	11	4	5	0	4.11
23	5-Feb-15	7-May-15	85,000,000.00	85,000,000.00	151,500,000.00	151,500,000.00	66,500,000.00	18	18	11	2	7	0	3.97
24	5-Mar-15	4-Jun-15	84,500,000.00	84,500,000.00	151,700,000.00	151,700,000.00	67,200,000.00	17	17	8	2	7	0	3.92
25	2-Apr-15	2-Jul-15	84,500,000.00	84,500,000.00	151,400,000.00	151,400,000.00	66,900,000.00	19	19	9	5	5	0	3.79
26	7-May-15	6-Aug-15	84,500,000.00	84,500,000.00	151,700,000.00	151,700,000.00	67,200,000.00	17	17	8	2	7	0	3.92
27	4-Jun-15	3-Sep-15	84,500,000.00	84,500,000.00	161,400,000.00	161,400,000.00	76,900,000.00	18	18		4	13	0	3.35
28	25-Jun-15	23-Jun-16	84,500,000.00	84,500,000.00	166,400,000.00	166,400,000.00	81,900,000.00	18	18	8	3	7	0	2.59
29	2-Jul-15	1-Oct-15	2,000,000,000.00	1,810,000,000.00	1,810,000,000.00	1,810,000,000.00	(190,000,000.00)	18	18	18	0	0	0	4.66
30	6-Aug-15	5-Nov-15	87,500,000.00	87,500,000.00	160,000,000.00	160,000,000.00	72,500,000.00	14	14	7	1	6	0	3.69
31	3-Sep-15	3-Dec-15	88,500,000.00	88,500,000.00	146,200,000.00	146,200,000.00	57,700,000.00	9	9	4	2	3	0	3.54
32	1-Oct-15	31-Dec-15	88,500,000.00	73,100,000.00	73,100,000.00	73,100,000.00	(15,400,000.00)	5	5	5	0	0	0	3.52
Total			2,854,500,000.00	2,649,100,000.00	3,267,650,000.00	3,267,650,000.00	413,150,000.00	169	169	89	25	60	-	41.06

Source : Central Bank of Liberia, Monrovia, Liberia.

1.10c: Government of Liberia Treasury Bills Auction - 2016-2017

CENTRAL BANK OF LIBERIA

Auction No.	Date	Maturity Date	Amount Offered GOL (LR\$)	Amount Issued GOL (LR\$)	Value of bid(s) Received	Value of bids processed	Over/(Under) Subscription (LR\$)	No. of Bid(s) Received	Bid(s) Processed	No. of Winning Bid(s)	No. of Prorated Bid(s)	Non-Selected Bid(s)	No. of Rejected Bid(s)	Average Discount Rate (%)
33	7-Jan-16	7-Apr-16	43,750,000.00	43,750,000.00	51,537,500.00	51,537,500.00	7,787,500.00	10	9	9	6	2	1	3.69
34	4-Feb-16	5-May-16	45,250,000.00	45,250,000.00	60,725,000.00	60,725,000.00	15,475,000.00	15	11	11	7	3	4	3.73
35	3-Mar-16	2-Jun-16	45,250,000.00	45,250,000.00	88,650,000.00	88,650,000.00	43,400,000.00	20	14	14	5	3	6	3.57
36	7-Apr-16	7-Jul-16	45,250,000.00	45,250,000.00	77,225,000.00	77,225,000.00	31,975,000.00	19	13	13	6	1	6	3.01
37	5-May-16	4-Aug-16	45,250,000.00	45,250,000.00	69,150,000.00	69,150,000.00	23,900,000.00	10	10	5	2	3	0	3.15
38	2-Jun-16	1-Sep-16	45,750,000.00	45,750,000.00	91,875,000.00	91,875,000.00	46,125,000.00	13	13	5	2	8	0	3.11
39	7-Jul-16	16-10-16	47,250,000.00	47,250,000.00	69,850,000.00	69,850,000.00	22,600,000.00	9	9	6	2	1	0	2.9
40	4-Aug-16	3-Nov-16	46,750,000.00	46,750,000.00	117,600,000.00	11,760,000.00	70,850,000.00	16	16	5	3	8	1	2.96
43	1-Sep-16	1-Dec-16	48,750,000.00	48,750,000.00	48,401,241.92	811,000,000.00	762,250,000.00	N/A	N/A	N/A	N/A	N/A	N/A	2.93
44	6-Oct-16	5-Jan-17	97,500,000.00	97,500,000.00	96,786,023.98	102,500,000.00	5,000,000.00	N/A	N/A	N/A	N/A	N/A	N/A	2.94
45	4-Nov-16	4-Feb-17	49,000,000.00	49,000,000.00	48,601,095.88	53,400,000.00	4,400,000.00	N/A	N/A	N/A	N/A	N/A	N/A	3.27
46	1-Dec-16	2-Mar-17	49,250,000.00	49,250,000.00	48,866,232.43	53,550,000.00	4,300,000.00	N/A	N/A	N/A	N/A	N/A	N/A	3.13
47	4-Jan-17	4-Apr-17	51,250,000.00	51,250,000.00	50,898,767.00	61,050,000.00	9,800,000.00	8	8	7	1	1	0	2.81
48	2-Feb-17	4-May-17	52,250,000.00	45,175,000.00	44,796,829.56	45,175,000.00	(7,075,000.00)	4	4	4	0	0	0	3.36
49	2-Mar-17	1-Jun-17	51,750,000.00	51,750,000.00	51,358,379.02	65,550,000.00	13,800,000.00	7	7	4	1	2	0	3.04
50	6-Apr-17	5-Jul-17	52,250,000.00	52,250,000.00	51,839,468.46	60,775,000.00	8,525,000.00	10	10	8	1	1	0	3.15
51	4-May-17	3-Aug-07	53,250,000.00	53,250,000.00	52,824,643.57	61,375,000.00	8,125,000.00	10	10	9	1	1	0	3.2
52	6-Jun-17	5-Sep-17	53,735,000.00	53,735,000.00	55,331,481.76	65,141,000.00	9,406,000.00	8	8	8	1	0	0	2.9
53	6-Jul-17	5-Oct-17	55,735,000.00	37,720,500.00	37,373,060.07	37,720,500.00	(18,014,500.00)	5	5	5	0	0	0	3.69
Total			979,220,000.00	954,130,500.00	1,213,689,723.65	1,938,009,000.00	1,062,629,000.00	164.00	147	113	38	34	18	61

REAL SECTOR

CENTRAL BANK OF LIBERIA

2.1a: Harmonized Consumer Price Index (HCPI) - 2015

Function	Weight (%)	Jan-15	Feb-15	Mar-15	Apr-15	May-15	Jun-15
Food & Non-alcoholic Beverages	45.2	272.58	270.65	279.95	279.53	280.99	286.45
Alcoholic Beverages, Tobacco & Narcotics	3.0	192.21	184.84	191.58	191.34	192.54	192.60
Clothing & Footwear	7.8	213.97	205.90	209.27	209.98	216.72	242.93
Housing, Water, Electricity, Gas & other fuels	12.0	139.40	139.05	128.46	133.87	133.78	133.78
Furnishings, Household Equipment & Routine Maintenance of the House	5.3	222.89	217.62	240.94	245.05	207.45	229.53
Health	3.9	111.15	108.11	119.59	120.27	103.11	109.05
Transport	6.1	270.62	253.52	231.80	232.17	231.59	279.18
Communication	1.5	84.41	84.46	84.46	84.46	77.55	77.65
Recreation & Culture	3.9	191.46	192.63	191.09	191.36	191.36	198.14
Education	3.2	100.00	100.00	100.00	100.00	100.00	100.00
Restaurants & Hotels	4.6	296.28	297.97	302.27	299.87	299.87	312.62
Miscellaneous Goods & Services	3.5	171.06	172.44	185.33	172.54	174.29	178.91
General Index	100.0	226.57	223.54	227.88	228.10	226.58	236.40

Function	Weight (%)	Jul-15	15-Aug	Sep-15	Oct-15	Nov-15	Dec-15
Food & Non-alcoholic Beverages	45.2	295.59	285.29	289.21	290.35	285.55	284.37
Alcoholic Beverages, Tobacco & Narcotics	3.0	197.37	199.84	209.30	209.50	204.66	208.32
Clothing & Footwear	7.8	257.91	263.34	269.87	272.65	269.70	263.77
Housing, Water, Electricity, Gas & other fuels	12.0	136.14	136.59	136.27	134.59	134.53	132.99
Furnishings, Household Equipment & Routine Maintenance of the House	5.3	223.42	241.50	266.58	267.28	258.49	262.47
Health	3.9	112.36	111.62	120.27	120.27	119.19	119.19
Transport	6.1	297.59	298.62	285.38	283.15	281.06	295.27
Communication	1.5	77.83	78.03	79.15	79.17	79.10	79.14
Recreation & Culture	3.9	198.79	189.93	202.36	203.03	202.54	202.78
Education	3.2	100.00	100.00	100.00	100.00	100.00	100.00
Restaurants & Hotels	4.6	304.31	331.55	332.59	332.40	331.48	333.12
Miscellaneous Goods & Services	3.5	176.46	180.52	193.15	194.68	191.20	192.60
General Index	100.0	242.61	240.56	244.92	245.42	242.06	242.20

The Harmonized Consumer Price Index (HCPI) is an amalgamation of the Classification of Individual Consumption by Purpose (COICOP), consisting of twelve functions (major groups) together with the Monrovia Consumer Price Index (MCPI) and its weights obtained from the 1964 limited expenditure survey. The Survey sample comprised wage-earner and clerical-employee households of two or more persons with monthly income not exceeding US\$250.

Sources : Liberia Institute for Statistics & Geo-Information Services (LISGIS) and Central Bank of Liberia (CBL)

REAL SECTOR

CENTRAL BANK OF LIBERIA

2.1b: Harmonized Consumer Price Index (HCPI) - 2016

Function	Weight (%)	Jan-16	Feb-16	Mar 16	Apr 16	May 16	Jun 16	Jul 16	Aug 16	16-Sep	Oct 16	Nov-16	Dec 16
Food & Non-alcoholic Beverages	45.2	292.76	285.46	295.65	288.06	286.44	298.15	312.61	316.11	317.67	324.39	326.68	324.81
Alcoholic Beverages, Tobacco & Narcotics	3.0	209.72	211.14	212.52	211.42	211.53	222.81	225.42	218.38	222.03	231.17	239.28	243.76
Clothing & Footwear	7.8	264.54	266.95	267.11	269.44	262.42	290.46	282.43	283.60	286.89	287.39	288.67	301.18
Housing, Water, Electricity, Gas & other fuels	12.0	104.10	104.27	104.27	134.18	134.27	135.07	137.49	135.87	135.77	134.08	133.82	138.79
Furnishings, Household Equipment & Routine Maintenance of the House	5.3	259.41	261.19	261.21	260.24	260.24	286.26	285.35	285.46	287.82	285.61	286.35	279.81
Health	3.9	116.76	116.76	116.76	116.76	116.76	116.76	116.76	109.05	109.05	112.03	112.03	112.16
Transport	6.1	295.18	293.10	293.10	294.17	302.47	341.68	343.46	342.54	342.57	341.00	345.97	357.11
Communication	1.5	79.26	79.39	79.39	79.51	79.51	79.70	79.92	80.13	80.28	80.40	80.55	80.25
Recreation & Culture	3.9	203.26	204.08	204.08	205.08	205.91	222.15	223.88	225.66	227.05	238.29	233.78	235.44
Education	3.2	100.00	100.00	100.00	100.00	100.00	100.00	100.00	100.00	100.00	100.00	100.00	100.00
Restaurants & Hotels	4.6	334.88	336.16	336.16	336.74	336.74	339.82	342.73	345.51	347.50	361.32	356.19	355.43
Miscellaneous Goods & Services	3.5	188.48	190.10	190.10	191.45	190.42	195.55	198.10	203.22	204.93	205.95	207.95	210.90
General Index	100.0	242.33	239.39	244.05	244.50	243.73	256.35	262.99	264.28	265.67	269.84	271.19	272.52

The Harmonized Consumer Price Index (HCPI) is an amalgamation of the Classification of Individual Consumption by Purpose (COICOP), consisting of twelve functions (major groups) together with the Monrovia Consumer Price Index (MCPI) and its weights obtained from the 1964 limited expenditure survey.

The Survey sample comprised wage-earner and clerical-employee households of two or more persons with monthly income not exceeding US\$250.

Sources : Liberia Institute for Statistics & Geo-Information Services (LISGIS) and Central Bank of Liberia (CBL)

REAL SECTOR

CENTRAL BANK OF LIBERIA

2.1c: Harmonized Consumer Price Index (HCPI) - 2017

Function	Weight (%)	Jan-17	Feb-17	Mar-17	Apr-17	**May-17	**Jun-17
Food & Non-alcoholic Beverages	45.2	326.12	313.63	309.47	307.71	311.90	319.39
Alcoholic Beverages, Tobacco & Narcotics	3.0	263.47	267.09	273.74	272.71	277.17	280.68
Clothing & Footwear	7.8	307.74	309.59	315.77	318.81	321.65	331.16
Housing, Water, Electricity, Gas & other fuels	12.0	137.81	137.29	137.60	135.45	138.89	144.01
Furnishings, Household Equipment & Routine Maintenance of the House	5.3	281.93	282.03	298.01	301.77	305.22	313.31
Health	3.9	111.76	111.14	110.14	111.33	113.53	115.05
Transport	6.1	364.47	365.03	376.52	375.84	380.84	390.41
Communication	1.5	80.56	80.45	80.63	80.61	80.98	82.78
Recreation & Culture	3.9	238.83	238.31	246.88	250.37	258.18	265.20
Education	3.2	100.00	100.00	100.00	100.00	100.00	100.00
Restaurants & Hotels	4.6	363.29	363.29	376.86	375.87	370.08	404.35
Miscellaneous Goods & Services	3.5	216.91	215.19	217.10	218.58	225.05	231.11
General Index	100.0	275.36	271.26	273.00	272.72	275.94	284.10

The Harmonized Consumer Price Index (HCPI) is an amalgamation of the Classification of Individual Consumption by Purpose (COICOP), consisting of twelve functions (major groups) together with the Monrovia Consumer Price Index (MCPI) and its weights obtained from the 1964 limited expenditure survey.

The Survey sample comprised wage-earner and clerical-employee households of two or more persons with monthly income not exceeding US\$250.

Sources : Liberia Institute for Statistics & Geo-Information Services (LISGIS) and Central Bank of Liberia (CBL)

** Provisional

REAL SECTOR

CENTRAL BANK OF LIBERIA

2.2a: HCPI Inflation Rate (Year-on-Year) - 2015 & 16

Function	Weight (%)	Jan-15	Feb-15	Mar-15	Apr-15	May-15	Jun-15
Food & Non-alcoholic Beverages	45.2	11.77	12.40	14.29	14.12	17.54	12.21
Alcoholic Beverages, Tobacco & Narcotics	3.0	4.61	(0.17)	2.49	0.20	3.39	0.18
Clothing & Footwear	7.8	10.12	1.74	0.28	(0.81)	5.15	10.51
Housing, Water, Electricity, Gas & other fuels	12.0	6.03	6.37	(4.20)	(1.38)	0.26	(0.24)
Furnishings, Household Equipment & Routine Maintenance of the House	5.3	(0.19)	4.82	8.34	8.61	(7.56)	0.31
Health	3.9	1.54	(3.90)	(2.75)	(2.20)	(14.51)	(10.58)
Transport	6.1	9.92	(1.06)	(10.07)	(10.29)	(10.65)	7.02
Communication	1.5	(3.96)	(3.60)	(4.02)	(4.33)	(12.15)	(12.38)
Recreation & Culture	3.9	19.14	20.00	16.61	15.69	15.71	21.86
Education	3.2	-	-	-	-	-	-
Restaurants & Hotels	4.6	(3.96)	(3.63)	(4.48)	(6.83)	(6.79)	(4.73)
Miscellaneous Goods & Services	3.5	4.04	4.78	8.25	(0.59)	0.37	(0.59)
General Rate of Inflation	100.0	8.65	7.65	7.26	6.77	7.90	7.72

Function	Weight (%)	Jul-15	Aug-15	Sep-15	Oct-15	Nov-15	Dec-15
Food & Non-alcoholic Beverages	45.2	12.93	6.90	3.77	2.76	9.03	5.88
Alcoholic Beverages, Tobacco & Narcotics	3.0	1.45	4.10	10.88	12.42	7.96	11.03
Clothing & Footwear	7.8	18.65	14.93	26.64	27.95	25.31	22.55
Housing, Water, Electricity, Gas & other fuels	12.0	2.36	3.35	(5.47)	(6.45)	0.86	(4.50)
Furnishings, Household Equipment & Routine Maintenance of the House	5.3	0.51	10.59	19.61	20.54	17.64	19.45
Health	3.9	(7.87)	(8.48)	(1.59)	(1.59)	(2.27)	(2.27)
Transport	6.1	14.08	10.61	10.46	9.59	8.85	14.36
Communication	1.5	(12.02)	(11.14)	(9.79)	(10.04)	(10.05)	(10.00)
Recreation & Culture	3.9	21.21	17.40	24.81	25.23	25.20	25.35
Education	3.2	-	-	-	-	-	-
Restaurants & Hotels	4.6	(7.78)	4.36	3.21	3.38	3.63	4.14
Miscellaneous Goods & Services	3.5	4.71	8.31	4.30	5.78	12.19	13.02
General Rate of Inflation	100.0	9.52	7.30	6.47	6.00	9.76	8.04

Function	Weight (%)	Jan-16	Feb-16	Mar-16	Apr-16	May-16	Jun-16
Food & Non-alcoholic Beverages	45.2	7.40	5.47	5.61	3.05	1.94	4.08
Alcoholic Beverages, Tobacco & Narcotics	3.0	9.11	14.23	10.93	10.50	9.87	15.69
Clothing & Footwear	7.8	23.63	29.65	27.64	28.32	21.09	19.56
Housing, Water, Electricity, Gas & other fuels	12.0	(25.32)	(25.01)	(18.83)	0.39	0.36	0.96
Furnishings, Household Equipment & Routine Maintenance of the House	5.3	16.38	20.02	8.41	6.09	25.45	24.72
Health	3.9	5.05	8.00	(2.37)	(2.92)	13.24	7.06
Transport	6.1	9.08	15.61	26.45	26.71	30.60	22.39
Communication	1.5	(6.10)	(6.00)	(6.00)	(5.86)	2.53	2.64
Recreation & Culture	3.9	6.16	5.94	6.80	7.17	7.60	12.12
Education	3.2	-	12.82	-	0.00	-	-
Restaurants & Hotels	4.6	13.03	12.82	11.21	12.29	12.29	8.70
Miscellaneous Goods & Services	3.5	10.18	10.24	2.57	10.96	9.25	9.30
General Rate of Inflation	100.0	6.95	7.09	7.10	7.19	7.57	8.44

Function	Weight (%)	Jul-16	Aug-16	Sep-16	Oct-16	Nov-16	Dec-16
Food & Non-alcoholic Beverages	45.2	5.76	10.80	9.84	11.73	14.41	14.22
Alcoholic Beverages, Tobacco & Narcotics	3.0	14.21	9.28	6.09	10.35	16.92	17.01
Clothing & Footwear	7.8	9.51	7.69	6.31	5.40	7.03	14.19
Housing, Water, Electricity, Gas & other fuels	12.0	0.99	(0.53)	(0.37)	(0.38)	(0.53)	4.36
Furnishings, Household Equipment & Routine Maintenance of the House	5.3	27.72	18.20	7.97	6.86	10.78	6.61
Health	3.9	3.91	(2.30)	(9.33)	(6.85)	(6.01)	(5.90)
Transport	6.1	15.41	14.70	20.04	20.43	23.09	20.94
Communication	1.5	2.68	2.70	1.43	1.55	1.83	1.41
Recreation & Culture	3.9	12.62	18.81	12.20	17.37	15.42	16.11
Education	3.2	-	-	-	-	-	-
Restaurants & Hotels	4.6	12.63	4.21	4.48	8.70	7.45	6.70
Miscellaneous Goods & Services	3.5	12.27	12.58	6.10	5.79	8.76	9.50
General Rate of Inflation	100.0	8.40	9.86	8.48	9.95	12.04	12.52

The Harmonized Consumer Price Index (HCPI) is an amalgamation of the Classification of Individual Consumption by Purpose (COICOP), consisting of non-financial import prices together the Harmonized Consumer Price Index (HCPI) and its weights, obtained from the 1994 limited expenditure survey. The survey sample comprised wage-earners and clerical-employee households of ten or more persons with monthly income not exceeding US\$250. Source: Liberia Institute for Statistics & Geo-Information Services (LISGIS) and Central Bank of Liberia (CBL).

REAL SECTOR

CENTRAL BANK OF LIBERIA

2.2b: HCPI Inflation Rate (Year-on-Year) - 2017

Function	Weight (%)	Jan-17	Feb-17	Mar- 17	Apr- 17	17-May	17-Jun
Food & Non-alcoholic Beverages	45.2	11.39	9.87	4.68	6.82	8.89	7.12
Alcoholic Beverages, Tobacco & Narcotics	3.0	25.63	26.50	28.81	28.99	31.03	25.97
Clothing & Footwear	7.8	16.33	15.97	18.22	18.32	22.57	14.01
Housing, Water, Electricity, Gas & other fuels	12.0	32.38	31.67	31.97	0.79	3.44	6.62
Furnishings, Household Equipment & Routine Maintenance of the House	5.3	8.68	7.98	14.09	16.08	17.28	9.45
Health	3.9	(4.28)	(4.81)	(5.66)	(4.65)	(2.77)	(1.46)
Transport	6.1	23.47	24.54	28.46	27.76	25.91	14.26
Communication	1.5	1.63	1.33	1.56	1.38	1.85	3.87
Recreation & Culture	3.9	17.50	16.77	20.97	22.08	25.38	19.38
Education	3.2	-	-	-	0.00	-	-
Restaurants & Hotels	4.6	8.48	8.07	12.11	11.62	9.90	18.99
Miscellaneous Goods & Services	3.5	15.09	13.20	14.21	14.17	18.19	18.19
General Rate of Inflation	100.0	13.63	13.31	11.86	11.54	13.22	10.83

The Harmonized Consumer Price Index (HCPI) is an amalgamation of the Classification of Individual Consumption by Purpose (COICOP), consisting of twelve functions (major groups) together with the Monrovia Consumer Price Index (MCPI) and its weights obtained from the 1964 limited expenditure survey. The Survey sample comprised wage-earner and clerical-employee households of two or more persons with monthly income not exceeding US\$250.

Sources : Liberia Institute for Statistics & Geo-Information Services (LISGIS) and Central Bank of Liberia (CBL)

*** Provisional*

REAL SECTOR

CENTRAL BANK OF LIBERIA

2.3a: Key Output Volume - 2015

Commodity	Unit	Jan-15	Feb-15	Mar - 15	Apr - 15	15-May	Jun - 15
Agriculture							
Rubber	Mt.	7,140.00	3,629.00	1,307.00	2,419.20	5,120.00	5,712.00
Cocoa Beans	Mt.	504.00	795.00	1,411.00	1,281.00	916.00	1,178.00
Coffee	Mt.						38.00
Round Logs	M ³	5,112.26	6,428.99	19,389.82	39,862.64	7,534.88	4,043.18
Sawn Timber	Pcs.	86,186.00	98,689.00	98,097.00	105,361.00	95,965.00	80,166.00
Fish	Kg.						
Mining							
Gold	Ounces	1,989.00	1,269.00	1,110.00	948.00	1,224.72	571.00
Diamond	Carat	8,193.00	5,875.00	7,352.49	6,275.16	4,624.84	11,107.00
Iron Ore	Mt.	85,000.00	219,000.00	648,000.00	964,302.00	320,000.00	274,000.00
Manufacturing							
Cement	Mt.	29,700.00	28,722.00	31,369.00	31,241.00	28,940.00	20,662.00
Spirits	Litre	23,456.97	22,553.37	25,935.75	25,542.36	32,074.02	28,638.09
Beer	Litre	767,502.80	523,077.44	730,298.48	713,497.80	699,329.88	766,555.80
Stout	Litre	549,727.20	432,645.84	479,120.40	362,854.80	604,961.28	566,969.04
Malta	Litre	152,681.76	-	67,359.60	49,167.36	115,695.36	112,297.68
Soft Drink	Litre	953,582.40	810,842.40	456,933.60	789,775.20	876,808.80	876,809.00
Oil Paint	Gal.	12,999.40	14,006.60	13,406.80	17,606.80	15,573.00	3,392.40
Water Paint	Gal.	9,332.00	15,014.00	13,475.00	12,678.00	9,619.00	12,739.00
Varnish	Gal.	1,184.00	1,012.00	997.00	1,004.00	948.00	753.00
Manoline Hair Grease	Kg.	2,763.60	2,192.40	2,192.40	1,579.00	1,629.60	1,999.20
Thinner	Gal.	1,374.00	596.00	812.00	753.00	717.00	854.00
Rubbing Alcohol	Litre	26,788.34	26,204.03	22,518.38	27,552.43	21,844.18	43,868.15
Soap	Kg.	32,741.40	34,975.20	33,041.85	27,903.90	36,745.65	34,197.45
Chlorox	Litre	77,736.33	76,676.53	73,258.68	74,000.54	77,974.79	78,928.61
Nail	Kg.	na	na	na	na	na	na
Candle	Kg.	8,799.00	10,143.00	12,138.00	20,538.00	18,070.50	13,051.50
Mattresses	Pcs.	11,290.00	10,499.00	12,210.00	10,775.00	10,609.00	9,810.00
Finished Water ¹	Gal.	176,532,421.00	144,127,294.70	172,884,055.00	157,724,827.00	154,321,692.00	179,989,081.00
Mineral Water	Gal.	67,759.98	64,061.58	67,363.73	199,185.30	85,855.73	96,974.18

1: Water from White Plains Treatment Plant

Sources : Lands, Mines & Energy; Commerce & Industry; Forestry Development Authority (FDA);

Liberia Produce Marketing Corporation (LPMC) and Liberia Water & Sewer Corporation (LWSC), Monrovia, Liberia

REAL SECTOR

CENTRAL BANK OF LIBERIA

2.3a: Key Output Volume - 2015 contd

Commodity	Unit	Jul - 15	Aug - 15	Sep - 15	Oct - 15	Nov - 15	Dec - 15
Agriculture							
Rubber	Mt.	1,854.72	5,660.71	1,874.88	3,311.00	4,866.29	2,761.92
Cocoa Beans	Mt.	770.40	812.65	-	1,903.00	1,925.78	1,882.88
Coffee	Mt.	-	-	-	-	20.00	-
Round Logs	M ³	-	12,631.97	9,696.19	-	7,085.00	-
Sawn Timber	Pcs.	72,604.00	52,193.00	40,359.00	39,643.00	55,835.00	82,407.00
Fish	Kg.						
Mining							
Gold	Ounces	341.13	343.27	305.22	357.48	211.70	795.82
Diamond	Carat	3,970.92	3,986.61	3,838.66	4,961.45	3,199.62	2,611.10
Iron Ore	Mt.	1,545,127.43	379,552.98	206,691.48	287,469.65	310,761.04	378,619.53
Manufacturing							
Cement	Mt.	19,505.00	19,626.00	16,902.00	18,898.00	18,122.00	21,704.00
Spirits	Litre	34,191.72	27,218.34	28,985.31	24,481.53	23,012.46	29,339.28
Beer	Litre	530,374.80	623,883.00	487,220.72	196,225.92	605,320.36	953,148.56
Stout	Litre	627,620.40	492,544.80	335,815.92	262,690.56	566,596.80	793,607.76
Malta	Litre	53,301.60	49,690.08	66,718.08	31,878.00	-	48,414.96
Soft Drink	Litre	428,729.04	688,658.40	305,337.60	604,642.00	560,225.00	1,067,242.00
Oil Paint	Gal.	5,619.00	5,396.50	5,710.75	11,982.25	16,016.00	24,523.25
Water Paint	Gal.	10,346.00	7,570.00	7,417.00	8,182.00	20,840.00	26,005.00
Varnish	Gal.	419.00	556.00	914.00	778.00	2,114.00	2,076.00
Manoline Hair Grease	Kg.	1,520.40	1,369.20	1,050.00	1,587.60	1,940.40	2,209.20
Thinner	Gal.	411.00	457.00	749.00	757.00	1,119.00	928.00
Rubbing Alcohol	Litre	33,934.89	10,787.25	22,922.91	15,057.20	11,416.51	11,731.13
Soap	Kg.	25,002.45	31,788.45	29,261.70	29,014.50	33,814.95	25,859.55
Chlorox	Litre	84,942.97	47,399.56	111,146.53	99,462.23	57,918.07	67,059.00
Nail	Kg.	na	na	na	na	na	na
Candle	Kg.	16,096.50	19,005.00	14,899.50	13,818.00	18,669.00	18,574.50
Mattresses	Pcs.	10,720.00	10,339.00	9,685.00	10,050.00	9,220.00	12,440.00
Finished Water ¹	Gal.	146,287,867.83	130,361,711.20	142,265,850.17	137,938,140.94	111,721,933.54	130,110,407.93
Mineral Water	Gal.	65,739.07	248,568.98	57,285.59	121,267.39	118,592.65	124,918.00

1: Water from White Plains Treatment Plant

Sources : Lands, Mines & Energy; Commerce & Industry; Forestry Development Authority (FDA);
Liberia Produce Marketing Corporation (LPMC) and Liberia Water & Sewer Corporation (LWSC), Monrovia, Liberia

REAL SECTOR

CENTRAL BANK OF LIBERIA

2.3b: Key Output Volume - 2016

Commodity	Unit	Jan - 16	Feb - 16	Mar - 16	Apr - 16	May - 16	Jun - 16
Agriculture							
Rubber	Mt.	7,056.00	3,024.00	2,903.00	5,724.00	3,003.40	2,499.84
Cocoa Beans	Mt.	1,367.00	1,091.00	1,452.62	439.00	550.44	433.09
Coffee	Mt.	18.00	44.00	100.00	51.40	-	-
Round Logs	M ³	10,038.00	-	1,632.00	22,763.00	20,307.97	9,261.49
Sawn Timber	Pcs.	29,721.00	70,828.00	23,289.00	64,059.00	74,202.00	65,549.00
Fish	Kg.						
Mining							
Gold	Ounces	443.00	466.00	579.43	210.00	688.46	310.78
Diamond	Carat	5,798.00	6,700.00	6,307.73	6,924.00	3,742.92	7,202.03
Iron Ore	Mt.	154,875.00	146,419.00	80,804.00	317,997.00	171,029.00	101,337.00
Manufacturing							
Cement	Mt.	27,824	23,812	28,490	25,406.00	22,853.00	17,808.00
Spirits	Litre	31,380	29,240	48,612	24,182.00	23,764.32	24,772.95
Beer	Litre	711,925	504,382	740,366	572,698.00	751,373.88	423,088.92
Stout	Litre	573,511	529,317	570,755	634,836.00	636,657.12	458,037.36
Malta	Litre	111,347	-	115,870	115,030.00	119,203.92	-
Soft Drink	Litre	749,686	524,455	804,347	774,107.00	737,236.80	768,340.80
Oil Paint	Gal.	12,273.00	7,644.00	9,403.25	7,564.00	8,083.50	7,106.25
Water Paint	Gal.	13,205.00	7,210.00	7,817.00	6,969.00	6,957.00	5,902.00
Varnish	Gal.	1,076.00	516.00	914.00	841.00	896.00	706.00
Manoline Hair Grease	Kg.	2,100.00	2,100.00	1,117.20	790.00	756.00	907.20
Thinner	Gal.	428.00	407.00	749.00	497.75	903.00	843.00
Rubbing Alcohol	Litre	23,507.00	18,159.00	16,810.13	19,158.61	48,272.94	9,573.68
Soap	Kg.	36,188.00	26,569.00	29,832.45	29,789.48	26,289.45	33,700.20
Chlorox	Litre	86,268.00	112,153.00	100,151.10	102,681.37	128,606.73	99,727.18
Nail	Kg.	na	na	na	na	na	na
Candle	Kg.	18,071.00	14,490.00	17,913.00	16,240.88	12,957.00	16,800.00
Mattresses	Pcs.	9,710.00	10,803.00	11,824.00	10,785.00	8,085.00	7,460.00
Finished Water ¹	Gal.	140,466,106.00	133,760,286.00	135,765,404.67	135,938,020.58	39,689,808.14	35,838,372.45
Mineral Water	Gal.	124,700.00	118,165.00	131,206.28	123,059.35	137,134.10	115,249.39
Electricity	KWh					7,714,201.00	6,823,608.00

Sources: Lands, Mines & Energy; Commerce & Industry; Forestry Development Authority (FDA);

Liberia Produce Marketing Corporation (LPMC) and Liberia Water & Sewer Corporation (LWSC), Monrovia, Liberia

REAL SECTOR

CENTRAL BANK OF LIBERIA

2.4a: Key Output Volume - 2016

Commodity	Unit	Jul - 16	Aug - 16	Sep - 16	Oct - 16	Nov - 16	Dec - 16
Agriculture							
Rubber	Mt.	2,500.00	5,519.24	2,217.60	2,902.12	1,955.52	2,290.79
Cocoa Beans	Mt.	614.00	908.31	529.00	479.30	825.40	735.08
Coffee	Mt.	-	-	-	-	-	-
Round Logs	M ³	2,065.34	6,097.62	27,604.94	8,184.00	1,298.00	16,460.00
Sawn Timber	Pcs.	43,059.45	22,967.00	26,480.00	35,748.00	51,039.00	53,203.00
Fish	Kg.	-	-	-	-	-	-
Crude Palm Oil	Mt.	-	272.54	194.37	233.50	213.94	223.72
Mining							
Gold	Ounces	389.00	403.77	172.76	131.23	395.45	410.37
Diamond	Carat	4,449.00	6,899.82	4,576.31	2,057.30	-	5,710.00
Iron Ore	Mt.	190,348.00	95,518.00	139,195.12	77,678.60	-	120,342.30
Manufacturing							
Cement	Mt.	14,631.00	13,196.00	12,168.00	14,272.00	16,747.00	23,722.00
Spirits	Litre	24,773.00	24,358.00	24,343.00	27,137.07	27,852.57	31,924.17
Beer	Litre	671,153.00	695,666.28	440,143.80	273,261.24	530,644.92	940,500.32
Stout	Litre	538,394.00	570,873.60	649,440.00	629,640.00	435,607.92	624,507.84
Malta	Litre	-	-	117,588.24	-	-	69,046.56
Soft Drink	Litre	754,430.40	820,881.36	528,307.20	569,001.60	562,968.00	887,868.00
Oil Paint	Gal.	10,734.00	7,276.75	6,067.75	6,870.75	12,061.00	12,053.25
Water Paint	Gal.	8,932.00	6,022.00	5,949.00	7,967.00	11,154.00	13,422.00
Varnish	Gal.	1,198.00	788.00	716.00	822.00	975.00	1,895.00
Manoline Hair Grease	Kg.	1,260.00	680.40	806.40	1,176.00	1,184.40	1,268.40
Thinner	Gal.	827.00	854.00	797.00	901.00	1,232.00	2,992.00
Rubbing Alcohol	Litre	39,294.81	30,743.66	5,123.94	22,248.70	8,315.17	21,484.61
Soap	Kg.	30,620.48	25,518.00	29,211.15	21,697.05	40,111.80	54,717.30
Chlorox	Litre	114,272.94	84,333.59	140,847.42	107,331.25	98,508.41	62,740.16
Nail	Kg.	na	na	na	na	na	na
Candle	Kg.	13,975.50	16,254.00	10,542.00	17,461.50	11,613.00	8,620.50
Mattresses	Pcs.	8,220.00	7,250.00	5,410.00	6,762.50	6,086.25	6,424.38
Finished Water ¹	Gal.	161,817,282.64	211,595,733.31	172,340,038.38	172,419,276.35	151,792,644.51	161,345,363.48
Mineral Water	Gal.	129,248.26	115,745.54	128,458.73	112,090.51	112,696.82	116,827.38
Electricity	KWh	5,401,992.77	11,762,204.00	14,714,549.00	7,236,794.42	10,975,671.71	9,106,233.07

Sources : Lands, Mines & Energy; Commerce & Industry; Forestry Development Authority (FDA);

Liberia Produce Marketing Corporation (LPMC) and Liberia Water & Sewer Corporation (LWSC), Monrovia, Liberia

REAL SECTOR

CENTRAL BANK OF LIBERIA

2.4b: Key Output Volume - 2017

Commodity	Unit	Jan - 17	Feb - 17	Mar - 17	Apr - 17	May - 17	Jun - 17
Agriculture							
Rubber	Mt.	2,437.84	1,995.84	4,170.60	3,490.93	2,016.00	3,165.00
Cocoa Beans	Mt.	325.64	271.44	25.00	718.50	250.00	150.00
Coffee	Mt.	-	-	-	-	-	-
Round Logs	M ³	1,786.48	1,973.94	-	2,161.38	16,981.16	15,703.50
Sawn Timber	Pcs.	51,634.00	72,589.00	66,409.00	71,603.73	61,088.00	35,970.00
Fish	Kg.	na	na	na	na	na	na
Crude Palm Oil	Mt.	117.70	373.24	837.57	1,025.73	489.57	681.5275*
Mining							
Gold	Ounces	196.71	301.30	246.08	243.83	209.03	166.73
Diamond	Carat	4,068.47	4,754.90	7,045.68	6,591.30	9,858.23	5,878.12
Iron Ore	Mt.	183,656.00	53,061.88	136,881.00	101,144.00	201,410.74*	52,139.9*
Manufacturing							
Cement	Mt.	23,391.00	27,563.00	32,514.00	32,384.50	27,261.00	21,331.00
Spirits	Litre	24,040.98	23,429.43	24,967.00	25,075.94	24,139.71	27,100.89
Beer	Litre	845,136.80	447,516.96	469,383.44	578,789.26	969,750.60	417,933.12
Stout	Litre	554,827.68	499,205.52	482,929.92	694,900.80	441,286.56	729,432.00
Malta	Litre	31,125.60	62,655.12	66,916.08	117,823.30	-	66,662.64
Soft Drink	Litre	1,015,149.60	717,033.60	977,320.80	642,689.11	899,683.2*	911,569.32*
Oil Paint	Gal.	13,451.50	9,772.25	8,479.00	8,586.10	7,734.50	3,901.75
Water Paint	Gal.	11,770.00	10,485.00	9,480.00	8,893.76	7,406.00	5,041.00
Varnish	Gal.	1,698.00	766.00	1,318.00	1,041.78	1,128.00	918.00
Manoline Hair Grease	Kg.	1,672.00	669.00	1,311.00	850.12	1,111.00	904.00
Thinner	Gal.	882.00	882.00	739.20	882.77	831.60	882.00
Rubbing Alcohol	Litre	1,963.00	503.00	1,533.00	824.90	1,133.00	763.00
Soap	Kg.	31,732.49	2,022.61	28,451.37	7,250.43	14,607.73	26,069.19
Chlorox	Litre	53,532.60	75,568.20	52,664.25	31,255.85	19,475.55	26,984.25
Nail	Kg.	60,117.16	34,575.98	91,964.15	62,219.00	157,539.27	138,409.88
Candle	Kg.	9,282.00	3,475.50	6,825.00	12,386.85	10,710.00	9,271.50
Mattresses	Pcs.	6,951.00	8,470.00	9,414.00	6,086.25	8,863.00	8,469.00
Finished Water ¹	Gal.	166,604,926.85	117,625,770.58	155,034,306.68	106,996,745.83	172,815,965.00	234,914,829.97
Mineral Water	Gal.	106,427.67	105,637.75	110,071.59	135,524.11	70,062.88	55,485.84
Electricity	KWh	5,197,417*	7,236,794.42*	10,975,671.7*	10,975,671.71*	9,106,233.10*	12,596,624.25*

Sources : Lands, Mines & Energy; Commerce & Industry; Forestry Development Authority (FDA);
Liberia Produce Marketing Corporation (LPMC) and Liberia Water & Sewer Corporation (LWSC), Monrovia, Liberia
*Estimates

REAL SECTOR

CENTRAL BANK OF LIBERIA

2.5a: Key Output Value - 2015

Liberian dollars

Commodity	Jan-15	Feb-15	Mar - 15	Apr- 15	May-15	Jun - 15
Agriculture						
Rubber ³	754,574,589.50	425,182,030.00	160,740,970.00	292,848,270.00	495,806,178.53	700,111,566.00
Cocoa Beans ⁴	82,505,358.30	125,895,599.38	216,917,541.75	189,464,843.75	136,767,475.00	175,749,783.83
Coffee ⁴						3,240,260.00
Round Logs ³	5,711,804.44	5,722,532.66	27,479,034.12	39,028,973.23	6,751,010.89	5,663,434.72
Sawn Timber ⁴	4,307,378.05	4,852,642.50	4,968,714.00	5,242,612.00	4,948,652.50	4,410,947.15
Fish ⁴	na	na	na	na	na	na
Mining⁴						
Gold	154,630,987.95	104,224,046.00	84,220,097.00	73,162,160.96	95,101,139.32	43,987,271.35
Diamond	213,180,311.63	209,843,843.11	206,619,035.81	255,675,901.20	204,855,258.86	356,301,550.26
Iron Ore	486,271,400.00	633,775,350.00	1,601,478,645.00	1,698,396,765.00	631,256,405.00	212,766,773.00
Manufacturing⁴						
Cement	389,791,116.00	378,613,404.00	413,506,158.00	411,818,862.00	381,487,080.00	274,848,403.44
Spirits	1,327,445.00	1,490,000.00	1,722,950.00	1,351,900.00	1,745,760.00	1,781,600.00
Beer	107,858,560.00	113,816,160.00	120,818,765.00	135,100,500.00	117,458,755.00	102,309,730.00
Stout	122,210,760.00	127,565,310.00	129,260,370.00	128,563,950.00	119,418,510.00	136,625,340.00
Malta	10,806,825.00	10,701,360.00	9,599,985.00	11,391,555.00	11,203,320.00	7,769,700.00
Soft Drink	80,640,405.00	72,548,385.00	75,123,915.00	78,363,075.00	86,143,635.00	63,679,770.00
Oil Paint	42,866,799.65	58,984,805.86	48,806,630.78	30,574,774.43	38,782,449.55	33,910,830.18
Water Paint	27,830,204.00	37,329,565.00	33,545,930.55	21,951,621.25	25,767,852.50	17,184,249.93
Varnish	1,367,449.02	1,624,428.00	1,088,275.50	913,740.75	995,874.75	671,117.54
Manoline Hair Grease	685,911.89	547,475.50	547,475.50	392,925.00	406,022.50	502,240.30
Thinner	1,043,885.04	856,999.00	953,667.00	764,049.00	907,192.00	511,193.65
Rubbing Alcohol	1,803,718.54	1,769,873.10	1,523,002.39	1,861,025.36	1,477,426.25	2,993,276.24
Soap	2,829,695.72	3,054,134.20	2,802,662.20	2,448,725.50	3,236,214.80	2,758,569.77
Chlorox	5,231,520.15	5,182,885.66	4,952,286.43	5,001,540.64	5,270,199.94	5,383,741.87
Nail	na	na	na	na	na	na
Candle	631,311.52	729,509.67	874,052.16	1,481,116.00	1,303,192.80	949,293.86
Mattresses	8,216,081.96	8,884,490.55	8,908,294.20	8,785,203.05	8,591,127.68	7,203,929.36
Finished Water ²	32,804,517.29	35,145,032.98	42,157,288.00	38,640,753.00	35,920,059.00	30,797,670.00
Mineral Water	12,445,000.00	11,646,000.00	13,599,000.00	15,632,900.00	18,579,250.00	12,634,000.00

1. Water from White Plains Treatment Plant.

2. Represents Export values

3. Represents quantity sold, not quantity produced

Sources: Lands, Mines & Energy; Commerce & Industry; Forestry Development Authority (FDA); Liberia Produce Marketing Corporation (LPMC) and Liberia Water & Sewer Corporation (LWSC), Monrovia, Liberia

REAL SECTOR

CENTRAL BANK OF LIBERIA

2.5a: Key Output Value - 2015 Cont.

Liberian dollars

Commodity	Jul-15	Aug - 15	Sep-15	Oct - 15	Nov-15	Dec- 15
Agriculture						
Rubber ³	252,456,884.20	643,353,749.40	213,587,067.20	452,838,891.58	534,418,316.00	312,405,873.00
Cocoa Beans ⁴	114,878,891.00	121,294,206.00	61,169,280.00	293,954,164.74	295,541,313.00	300,018,850.00
Coffee ⁴	-	-	-	-	2,152,080.00	-
Round Logs ³	-	-	18,032,314.26	-	8,463,753.00	-
Sawn Timber ⁴	3,271,154.00	2,423,955.00	1,943,355.68	2,042,693.00	2,780,990.00	4,183,912.00
Fish ⁴	na	na	na	na	na	na
Mining⁴						
Gold	24,642,262.74	25,756,128.07	23,227,068.04	27,575,108.40	15,870,362.00	57,417,981.00
Diamond	206,614,512.61	208,450,378.70	148,511,929.84	287,353,339.48	150,557,663.00	144,556,530.00
Iron Ore	-	-	734,131,944.00	778,450,400.00	1,018,325,000.00	995,182,500.00
Manufacturing⁴						
Cement	263,778,598.20	270,129,908.88	231,714,250.56	259,608,629.28	247,365,300.00	299,645,424.00
Spirits	2,312,100.00	1,645,400.00	1,625,975.00	1,698,350.00	1,620,000.00	2,259,000.00
Beer	135,826,655.00	89,269,310.00	87,007,255.00	98,448,440.00	151,641,355.00	219,000,920.00
Stout	170,850,660.00	114,556,710.00	118,244,670.00	125,524,230.00	144,934,200.00	244,467,510.00
Malta	12,021,675.00	7,891,185.00	7,610,835.00	7,124,895.00	8,442,540.00	16,503,270.00
Soft Drink	58,024,455.00	55,715,190.00	39,851,085.00	64,194,930.00	55,484,475.00	101,523,360.00
Oil Paint	4,549,624.64	10,469,129.17	10,130,806.40	15,270,858.86	19,045,425.00	28,300,353.00
Water Paint	13,068,321.34	-	4,793,678.24	7,385,239.96	11,733,838.00	15,303,509.00
Varnish	821,561.13	778,982.67	778,265.28	1,527,620.85	2,179,406.00	2,719,251.00
Manoline Hair Grease	959,262.60	-	272,428.00	412,208.86	491,925.00	557,550.00
Thinner	1,399,699.40	-	435,972.68	660,626.12	1,126,125.00	1,090,320.00
Rubbing Alcohol	110,291.50	-	210,868.06	292,799.50	216,125.00	228,950.00
Soap	3,333,264.35	-	3,230,644.56	3,073,910.42	3,380,738.00	3,721,071.00
Chlorox	1,759,741.90	2,419,280.44	3,690,652.42	3,364,816.63	1,862,394.00	2,146,169.00
Nail	na	na	na	na	na	na
Candle	6,760,048.60	-	3,092,497.20	2,874,542.58	3,857,175.00	3,882,938.00
Mattresses	45,252,670.32	37,239,186.86	39,547,812.96	49,289,726.00	45,899,046.00	59,123,347.00
Finished Water ²	29,054,866.96	31,818,759.88	27,674,271.47	30,558,772.29	27,056,271.00	30,848,962.00
Mineral Water	15,112,900.00	13,581,600.00	11,962,600.00	21,426,000.00	22,313,700.00	23,947,850.00

1. Water from White Plains Treatment Plant.

2. Represents Export values

3. Represents quantity sold, not quantity produced

Sources: Lands, Mines & Energy; Commerce & Industry; Forestry Development Authority (FDA);

Liberia Produce Marketing Corporation (LPMC) and Liberia Water & Sewer Corporation (LWSC), Monrovia, Liberia

REAL SECTOR

CENTRAL BANK OF LIBERIA

2.5b: Key Output Value - 2016

Liberian dollars

Commodity	Jan-16	Feb-16	Mar-16	Apr-16	May-16	Jun-16
Agriculture						
Rubber ³	661,267,098.00	297,025,941.00	286,708,769.35	395,249,222.71	408,169,870.37	318,782,850.85
Cocoa Beans ⁴	214,735,336.00	173,822,671.00	230,737,442.50	196,912,890.10	88,061,343.48	70,425,415.34
Coffee ⁴	1,984,752.00	5,017,320.00	11,403,000.00	5,815,530.00	-	-
Round Logs ³	59,329,145.00	-	10,759,116.03	19,237,193.93	32,357,947.19	15,215,164.96
Sawn Timber ⁴	1,516,618.00	7,350,140.00	11,028,984.00	2,304,394.18	3,982,637.42	4,287,011.32
Fish ⁴	na	na	na	na	na	na
Mining⁴						
Gold	24,947,236.00	37,397,161.00	49,860,818.44	42,110,431.78	62,939.01	27,104,339.36
Diamond	258,795,047.00	132,232,986.00	250,412,650.21	253,151,786.47	205,111,430.49	305,772,522.32
Iron Ore	501,012,050.00	536,194,400.00	355,755,500.00	581,723,905.49	355,084,422.00	200,141,317.20
Manufacturing⁴						
Cement	388,478,688.00	336,177,816.00	402,221,820.00	366,856,230.00	302,937,082.70	236,061,067.20
Spirits	1,711,400.00	2,184,900.00	3,367,900.00	2,398,378.22	1,599,900.00	1,208,450.00
Beer	87,243,440.00	117,482,130.00	138,165,570.00	114,819,107.16	132,279,415.00	106,794,430.00
Stout	116,573,700.00	146,364,270.00	157,822,350.00	152,283,753.46	155,700,240.00	140,282,640.00
Malta	18,768,765.00	-	19,531,050.00	9,574,883.61	9,284,925.00	7,347,840.00
Soft Drink	67,388,385.00	63,855,870.00	83,278,965.00	67,374,678.55	73,726,305.00	76,844,955.00
Oil Paint	11,657,599.00	10,229,532.00	9,444,127.50	9,281,419.42	9,445,971.50	8,229,692.10
Water Paint	5,271,416.00	5,058,045.00	4,828,899.00	5,473,822.95	4,462,073.07	3,607,247.32
Varnish	1,420,902.00	739,159.00	919,977.75	760,944.60	823,191.39	723,800.34
Manoline Hair Grease	537,000.00	506,800.00	268,604.00	445,829.74	179,731.72	223,751.36
Thinner	513,909.00	397,205.00	497,750.00	330,947.26	704,939.62	584,652.64
Rubbing Alcohol	454,213.00	360,869.00	324,668.75	370,037.68	927,913.00	196,061.20
Soap	3,608,819.00	2,960,934.00	3,087,905.25	3,083,454.08	2,804,399.92	3,618,490.64
Chlorox	3,011,004.00	3,907,202.00	3,493,073.75	3,581,315.53	4,279,370.20	3,501,876.04
Nail	na	na	na	na	na	na
Candle	3,820,487.00	3,058,629.00	3,705,975.00	3,360,059.17	2,706,946.20	3,446,402.80
Mattresses	46,068,987.00	48,214,508.00	57,626,234.29	52,562,494.39	41,505,824.58	38,073,475.67
Finished Water ²	30,817,467.00	37,748,154.00	18,851,262.22	18,875,230.45	38,146,356.24	34,595,484.71
Mineral Water	23,175,700.00	22,939,500.00	24,304,500.00	22,795,355.89	24,949,000.00	22,826,300.00
Electricity					*179,748,254.22	*168,116,651.06

1. Water from White Plains Treatment Plant.

2. Represents Export values

3. Represents quantity sold, not quantity produced

Sources: Lands, Mines & Energy; Commerce & Industry; Forestry Development Authority (FDA);

Liberia Produce Marketing Corporation (LPMC) and Liberia Water & Sewer Corporation (LWSC), Monrovia, Liberia

REAL SECTOR

CENTRAL BANK OF LIBERIA

2.5b: Key Output Value - 2016 Cont.

Liberian dollars

Commodity	Jul-16	Aug-16	Sep-16	Oct-16	Nov-16	Dec-16
Agriculture						
Rubber ³	385,506,937.59	697,622,457.73	280,475,333.78	650,495,140.23	286,605,746.81	397,997,016.48
Cocoa Beans ⁴	198,279,530.31	153,087,995.46	90,260,625.00	81,622,166.50	145,355,930.20	53,607,960.00
Coffee ⁴	-	-	-	-	-	-
Round Logs ³	17,522,065.15	12,769,957.67	34,459,438.00	10,282,695.00	2,037,352.00	28,635,029.00
Sawn Timber ⁴	6,811,470.50	1,190,885.10	1,489,610.00	1,946,480.00	2,756,558.00	2,920,586.00
Fish ⁴	na	na	na	na	na	na
Crude Palm oil		13,124,163.70	9,475,537.50	11,404,835.69	10,440,186.84	10,922,511.26
Mining⁴						
Gold	37,400,594.25	39,832,157.54	17,065,390.88	13,078,567.29	34,684,774.53	36,152,320.18
Diamond	193,418,417.42	216,342,046.76	289,862,309.10	79,864,164.84	-	330,459,215.18
Iron Ore	482,289,087.50	184,301,223.75	279,371,625.00	372,027,600.00	-	258,896,977.92
Manufacturing⁴						
Cement	365,764,035.00	184,281,480.20	172,025,100.00	203,674,284.80	237,869,733.40	346,720,752.00
Spirits	2,362,275.00	1,234,129.00	1,246,815.00	1,544,450.00	2,100,400.00	2,465,500.00
Beer	115,093,317.50	104,860,170.00	85,972,355.00	91,189,010.00	120,736,700.00	200,883,600.00
Stout	144,330,855.00	129,207,810.00	145,166,340.00	136,476,420.00	164,712,090.00	250,533,810.00
Malta	9,574,953.75	6,724,395.00	7,740,330.00	6,944,670.00	9,212,835.00	15,380,535.00
Soft Drink	69,594,772.50	64,841,340.00	50,678,685.00	45,664,755.00	56,556,990.00	100,713,300.00
Oil Paint	9,972,890.63	7,729,021.97	7,876,878.75	9,045,732.99	14,122,186.65	19,466,395.20
Water Paint	5,054,101.19	3,502,409.46	3,527,013.75	4,637,845.66	7,785,811.67	10,531,533.60
Varnish	954,799.31	906,228.95	938,486.25	1,162,586.25	1,494,894.96	3,275,445.60
Manoline Hair Grease	454,801.00	175,284.20	210,210.00	275,576.00	298,341.68	307,641.60
Thinner	451,517.00	730,992.90	862,290.00	1,053,389.26	1,399,895.64	3,983,918.40
Rubbing Alcohol	375,154.69	627,459.65	110,418.75	457,653.00	188,206.20	463,932.00
Soap	3,154,647.94	2,581,011.69	3,102,450.00	2,097,428.62	3,900,100.49	5,361,451.20
Chlorox	3,579,620.25	3,205,244.96	4,944,176.25	4,055,986.62	3,772,687.88	2,391,278.40
Nail	na	na	na	na	na	na
Candle	3,410,929.63	3,338,489.84	2,192,190.00	3,665,160.80	2,467,592.40	1,854,316.80
Mattresses	50,031,059.23	38,658,364.97	31,344,431.63	39,180,540.00	35,262,486.00	37,221,513.00
Finished Water ²	31,291,259.12	32,098,335.49	26,461,371.00	31,489,544.94	33,684,109.05	21,187,394.93
Mineral Water	23,339,800.00	21,832,250.00	24,326,300.00	21,047,900.00	21,290,700.00	22,110,750.00
Electricity	292,320,614.84	177,905,254.00	173,103,429.00	178,296,531.87	175,699,980.44	176,998,256.15

1. Water from white plains treatment plant.

2. Represents export values

3. Represents quantity sold, not quantity produced

4. Sources: Lands, Mines & Energy; Commerce & Industry; Forestry Development Authority (FDA);

Liberia Produce Marketing Corporation (LPMC) and Liberia Water & Sewer Corporation (LWSC), Monrovia, Liberia

REAL SECTOR

CENTRAL BANK OF LIBERIA

2.5c: Key Output Value - 2017

Liberian dollars

Commodity	Jan-17	Feb-17	Mar-17	Apr-17	May-17	Jun-17
Agriculture						
Rubber ³	432,713,320.63	431,663,173.17	954,120,256.59	547,438,996.15	522,340,608.00	547,862,864.57
Cocoa Beans ⁴	60,399,524.90	59,172,777.20	14,590,885.40	122,594,062.50	48,160,000.00	29,620,500.00
Coffee ⁴	-	-	-	-	-	-
Round Logs ³	3,284,294.78	1,212,238.88	-	1,327,349.80	30,185,587.20	35,757,823.59
Sawn Timber ⁴	3,118,680.50	4,009,110.00	4,150,745.00	3,880,214.71	3,674,426.40	2,176,601.20
Fish ⁴	na	na	na	na	na	na
Crude Palm oil	6,677,230.63	13,130,990.57	41,698,705.44	58,247,403.06	37,776,704.00	na
Mining⁴						
Gold	18,255,352.87	28,708,992.49	25,721,581.91	26,466,341.00	21,908,899.87	1,814,081.29
Diamond	185,351,572.59	382,777,401.84	425,724,810.33	94,335,709.00	503,028,562.48	366,701,988.60
Iron Ore	470,103,835.14	138,287,095.00	445,755,449.72	329,377,263.51	761,659,807.44*	202,117,216.101*
Manufacturing⁴						
Cement	350,260,342.65	408,336,197.95	490,405,410.60	498,414,865.50	435,129,177.60	349,013,555.80
Spirits	1,802,450.00	1,777,350.00	1,895,600.00	1,253,060.00	1,838,800.00	2,072,300.00
Beer	118,672,965.00	131,606,592.00	155,569,184.00	113,053,646.83	148,426,628.00	135,708,814.00
Stout	150,062,165.00	148,503,310.00	257,327,405.00	155,327,983.80	182,751,420.00	168,913,340.00
Malta	8,029,640.00	10,490,280.00	17,540,560.00	7,755,810.66	10,149,720.00	8,704,920.00
Soft Drink	91,438,981.11	72,732,738.51	98,123,112.14	75,583,235.84	92,024,678.67	89,874,735.63*
Oil Paint	13,763,619.06	12,526,144.17	8,969,540.58	11,145,783.79	8,737,489.92	5,866,551.60
Water Paint	7,899,483.75	5,398,305.21	5,598,720.47	5,272,885.93	5,127,196.16	4,863,347.58
Varnish	2,241,785.16	950,334.26	1,464,653.61	1,365,497.13	1,227,502.08	1,398,426.12
Manoline Hair Grease	873,664.20	338,182.70	597,594.90	347,773.28	510,771.20	418,636.40
Thinner	216,867.00	214,557.00	186,403.84	230,179.95	225,003.52	236,964.00
Rubbing Alcohol	1,303,577.21	349,319.23	691,004.86	892,470.15	643,252.48	706,321.98
Soap	699,757.52	45,976.50	642,323.50	156,242.89	356,659.20	635,289.20
Chlorox	5,524,377.02	7,971,201.23	5,243,804.23	3,319,621.50	2,075,723.52	2,606,321.90
Nail	2,380,373.50	1,367,238.94	3,710,133.35	2,485,915.00	6,669,306.88	5,955,920.88
Candle	2,044,746.00	712,329.24	1,514,531.20	2,575,823.25	2,515,107.84	2,230,621.12
Mattresses	42,101,617.56	46,941,789.90	57,070,526.19	35,262,486.00	55,113,381.53	49,758,811.07
Finished Water ²	36,476,261.07	35,917,381.26	36,197,145.89	36,825,238.17	40,694,016.64	41,978,974.89
Mineral Water	21,927,895.00	22,109,175.00	22,912,670.00	25,664,246.50	16,994,455.00	13,642,390.00
Electricity	269,220,792.8*	178,296,531.87*	175,699,980.44*	175,699,980.44*	176,998,256.15*	244,841,143.55*

1. Water from White Plains Treatment Plant.

2. Represents Export values

3. Represents quantity sold, not quantity produced

Sources: Lands, Mines & Energy; Commerce & Industry; Forestry Development Authority (FDA);

Liberia Produce Marketing Corporation (LPMC) and Liberia Water & Sewer Corporation (LWSC), Monrovia, Liberia

The values for crude Palm oil, Mattresses and electricity are estimates.

Provisional/Actual

GOVERNMENT FINANCE

CENTRAL BANK OF LIBERIA

3.1: Government Revenue - 2015 -2017

Millions of Liberian Dollars

REVENUE SOURCES	2015						2016					
	Jan-Feb	Mar-Apr	May-Jun	Jul-Aug	Sep-Oct	Nov-Dec	Jan-Feb	Mar-Apr	May-Jun	Jul-Aug	Sep-Oct	Nov-Dec
A. Tax Revenue	5,816.08	5,691.24	4,730.96	6,005.90	5,631.63	5,175.86	5,240.36	6,168.22	6,370.47	5,432.67	5,890.31	5,761.65
International Trade Taxes	2,425.93	2,605.44	2,022.13	3,100.57	2,511.97	2,488.37	2,387.97	2,855.23	2,975.09	2,747.45	2,582.11	2,884.59
Taxes & Duties on Imports	2,421.95	2,594.08	2,012.21	3,094.31	2,501.78	2,484.94	2,383.34	2,849.39	2,968.64	2,740.22	2,574.25	2,877.92
Taxes on Exports	3.99	11.36	9.92	6.26	10.19	3.43	4.63	5.84	6.46	7.23	7.86	6.68
Taxes on Income & Profits	2,077.90	2,379.99	1,947.47	2,233.32	2,531.97	1,667.87	2,091.51	2,473.71	2,210.43	1,998.28	2,524.42	2,049.12
Individual Taxes on income & profits	1,930.25	2,262.72	1,654.73	2,119.35	2,446.96	1,569.07	1,956.09	2,406.63	2,109.44	1,901.38	2,382.85	1,962.67
Taxes Payable by Corporate Entities	129.82	95.93	292.73	91.75	85.01	98.80	108.70	67.09	100.98	96.90	125.59	86.45
Others	17.83	21.34	-	22.22	-	-	26.73	-	-	-	15.98	-
Sale Taxes on Goods & Services	659.22	622.45	679.89	610.79	547.55	994.55	661.44	745.85	1,011.65	646.97	751.78	650.74
Goods & Service Tax	404.65	363.95	217.29	428.35	370.49	377.64	417.29	394.31	451.29	422.94	386.41	391.40
Excise Taxes	79.95	70.02	28.86	77.61	58.27	57.09	76.07	82.38	79.21	81.66	65.29	73.98
Maritime Revenue	86.61	88.20	351.25	26.64	48.38	494.52	87.79	121.73	369.05	53.46	216.51	80.28
Others	88.00	100.28	82.48	78.18	70.41	65.29	80.28	147.44	112.10	88.91	83.57	105.08
Property & Real Estate Taxes	87.90	83.37	81.47	61.22	39.61	25.08	94.98	88.30	173.25	39.97	31.98	25.20
Other Tax Revenue¹	565.13	-	-	-	0.53	-	4.48	5.13	0.05	0.00	0.01	152.00
B. Non-Tax Revenue	1,901.95	3,426.77	2,974.65	3,778.78	2,865.94	598.77	3,244.39	1,529.77	2,862.23	1,801.90	1,004.36	7,371.74
Charges & Other Administrative Fees	182.84	766.22	934.32	206.82	305.81	163.60	177.20	248.91	235.93	900.95	203.69	227.65
Grants	223.11	215.67	307.58	2,944.45	486.23	-	-	731.19	1,735.44	209.48	294.09	-
Others	1,496.00	2,444.87	1,732.75	627.51	2,073.90	435.17	3,067.18	549.68	890.86	249.57	506.59	7,144.10
Contingent Revenue	-	-	-	-	-	-	-	-	-	441.90	-	-
Borrowing	-	-	-	-	-	-	-	-	-	-	-	5,680.05
Revenue Carry Forward	-	-	-	-	1,925.00	-	-	-	-	-	-	-
Grand Total Revenue (A + B)	7,718.03	9,118.00	7,705.61	9,784.68	8,497.56	5,774.63	8,484.75	7,697.99	9,232.70	6,333.62	6,894.67	13,133.40

REVENUE SOURCES	2017		
	Jan-Feb	Mar-Apr	*May-Jun
A. Tax Revenue	6,923.85	7,700.00	6,458.72
International Trade Taxes	3,293.86	3,484.38	3,113.59
Taxes & Duties on Imports	3,288.67	3,481.73	3,106.41
Taxes on Exports	5.19	2.64	7.18
Taxes on Income & Profits	2,355.59	3,185.58	2,188.18
Individual Taxes on income & profits	2,159.18	3,067.63	2,120.33
Taxes Payable by Corporate Entities	196.40	117.95	61.00
Others	-	-	6.85
Sale Taxes on Goods & Services	952.96	939.20	962.61
Goods & Service Tax	496.40	401.99	504.48
Excise Taxes	114.93	111.59	120.02
Maritime Revenue	177.05	251.57	136.35
Others	164.58	174.05	201.77
Property & Real Estate Taxes	149.06	90.82	194.34
Other Tax Revenue¹	172.38	0.02	-
B. Non-Tax Revenue	1,244.86	1,740.60	-
Charges & Other Administrative Fees	880.81	1,550.25	5,318.55
Grants	0.01	0.01	599.48
Others	364.04	190.33	3,629.50
Contingent Revenue	-	-	1,089.58
Borrowing	-	-	-
Revenue Carry Forward	-	-	-
Grand Total Revenue (A + B)	8,168.71	9,440.60	11,777.27

Source: Ministry of Finance, Monrovia, Liberia
* Estimates

GOVERNMENT FINANCE

3.2: Government Expenditure 2015 - 2017

Millions of Liberian Dollars

CENTRAL BANK OF LIBERIA

Expenditure By Sectors	2015						2016					
	Jan-Feb	Mar-Apr	May-Jun	Jul-Aug	Sep-Oct	Nov-Dec	Jan-Feb	Mar-Apr	May-Jun	Jul-Aug	Sep-Oct	Nov-Dec
PUBLIC ADMINISTRATIVE SERVICES SECTOR	1,772.92	2,818.79	3,268.02	3,084.17	2,717.48	2,912.17	2,174.03	3,348.48	3,061.76	1,581.12	2,144.50	3,752.90
MUNICIPAL GOVERNMENT	212.82	177.33	191.18	292.96	118.86	173.20	217.73	197.95	335.15	98.19	185.51	400.08
TRANSPARENCY AND ACCOUNTABILITY	256.13	273.05	300.52	267.45	367.08	399.45	282.36	308.97	198.23	213.01	373.16	676.69
SECURITY AND THE RULE OF LAW	1,047.99	1,452.22	899.79	1,413.87	890.16	939.32	1,273.61	1,201.85	600.01	509.79	1,349.05	1,804.90
HEALTH	1,001.81	891.53	998.00	1,453.68	494.84	756.53	557.63	719.87	1,077.38	281.11	709.12	1,523.10
SOCIAL DEVELOPMENT SERVICES	121.97	156.12	171.36	122.48	196.13	263.23	227.91	193.59	147.57	29.77	65.70	170.55
EDUCATION	802.64	823.43	1,136.06	1,125.82	913.84	1,193.83	723.79	1,068.68	1,160.59	569.92	1,091.93	1,784.32
ENERGY AND ENVIRONMENT	172.19	202.68	204.95	138.60	185.28	187.02	132.98	260.59	334.58	61.88	119.31	148.22
AGRICULTURE	82.12	68.74	74.88	79.40	50.56	89.83	52.92	64.22	42.66	25.38	56.84	78.76
INFRASTRUCTURE AND BASIC SERVICES SECTOR	1,498.26	1,035.21	270.18	362.97	708.19	903.76	702.13	540.51	1,116.02	88.31	117.67	135.65
INDUSTRY AND COMMERCE SECTOR	209.26	274.32	183.04	196.19	81.49	104.97	116.26	77.35	121.55	47.22	82.30	173.26
NATIONAL CLAIMS	1,386.06	-	-	-	-	-	-	-	-	-	-	-
CENTRAL BANK OF LIBERIA	72.27	-	-	-	-	-	-	-	-	-	-	-
TOTAL	8,636.44	8,173.43	7,697.97	8,537.59	6,723.90	7,923.31	6,461.36	7,982.06	8,195.50	3,505.69	6,295.08	10,648.43

Expenditure By Sectors	2017		
	Jan-Feb	*Mar-Apr	*May-Jun
PUBLIC ADMINISTRATIVE SERVICES SECTOR	2,386.60	2,320.76	3,729.10
MUNICIPAL GOVERNMENT	242.96	311.54	113.41
TRANSPARENCY AND ACCOUNTABILITY	243.83	1,369.80	826.17
SECURITY AND THE RULE OF LAW	371.05	1,261.89	1,204.41
HEALTH	1,045.42	883.25	841.75
SOCIAL DEVELOPMENT SERVICES	800.04	480.71	468.15
EDUCATION	821.51	1,236.44	1,144.24
ENERGY AND ENVIRONMENT	324.65	199.87	618.28
AGRICULTURE	277.20	67.78	174.72
INFRASTRUCTURE AND BASIC SERVICES SECTOR	462.70	1,203.97	1,106.04
INDUSTRY AND COMMERCE SECTOR	206.45	122.39	102.68
NATIONAL CLAIMS	-	-	-
CENTRAL BANK OF LIBERIA	-	-	-
TOTAL	6,771.62	9,458.39	10,328.93

Source: Ministry of Finance, Monrovia, Liberia
1 Tax Revenue not elsewhere classified

**Estimates

GOVERNMENT FINANCE

CENTRAL BANK OF LIBERIA

3.2: Government Expenditure 2015 - 2017 Cont.

Millions of Liberian Dollars

Expenditure by Codes	2015						2016					
	Jan-Feb	Mar-Apr	May-Jun	Jul-Aug	Sep-Oct	Nov-Dec	Jan-Feb	Mar-Apr	May-Jun	Jul-Aug	Sep-Oct	Nov - Dec
A. Current Expenditure	6,893.12	6,671.91	7,342.91	7,453.14	5,655.15	6,991.32	5,906.89	7,419.61	7,141.74	3,150.05	6,201.15	10,633.44
Salaries, & Allowances	2,607.82	3,146.47	2,790.40	3,197.05	2,443.57	3,409.51	2,237.00	2,634.94	2,500.65	2,181.89	3,314.15	6,359.94
Expenditure on Goods & Services	3,683.97	2,496.59	2,887.88	3,010.92	1,736.34	2,015.91	1,935.64	2,899.62	2,872.92	439.85	1,240.75	2,611.42
Subsidies	-	-	-	-	-	-	-	-	-	-	-	-
Grants	584.17	1,015.62	1,640.83	1,234.10	778.61	981.07	862.53	1,025.64	1,151.44	266.97	823.63	564.06
Social Benefits	17.16	13.22	23.80	11.07	28.99	50.38	10.91	17.17	18.55	10.35	17.05	7.13
Others	-	-	-	-	667.64	534.45	860.81	842.24	598.18	250.99	805.56	1,090.89
B. Capital Expenditure	1,685.86	982.97	146.68	370.66	638.16	767.95	458.13	494.81	985.37	-	0.72	13.38
Depreciation	-	-	-	-	-	-	-	-	-	-	-	-
Acquisition of Fixed Assets	1,684.68	957.54	146.68	370.66	638.16	767.95	458.13	444.25	959.26	-	0.72	13.38
Others	1.17	25.44	-	-	-	-	-	50.56	26.11	-	-	-
C. Loan and Interest and other charges	57.46	518.56	208.38	713.79	430.60	164.04	96.34	67.65	68.38	355.64	93.21	1.61
On Domestic & Foreign Debts (Residents)	4.58	-	-	-	-	-	-	-	-	-	-	-
To Non-Residents	52.88	-	-	-	-	-	-	-	-	-	-	-
Others	-	-	-	-	-	-	-	-	-	-	-	-
Domestic Debts Repayment	-	234.96	84.42	-	260.38	51.75	1.56	-	-	-	-	-
External Debts Repayment	-	0.42	27.80	45.03	143.29	31.59	13.14	-	-	296.37	-	-
Interest on other Domestic Debt	-	201.31	-	273.02	26.92	63.83	51.45	51.93	60.27	55.57	27.91	1.61
Interest on Foreign Debt	-	81.86	-	138.16	-	16.87	30.19	15.72	8.12	3.69	65.30	-
Deficit Financing-CBL	-	-	-	-	-	-	-	-	-	-	-	-
Interest on Treasury Bills	-	-	-	-	-	-	-	-	-	-	-	-
Others	-	-	-	-	-	-	-	-	-	-	-	-
D. Other Expenditure	-	-	-	-	-	-	-	-	-	-	-	-
Total Expenditures	8,636.44	8,173.43	7,697.97	8,537.59	6,723.90	7,923.31	6,461.36	7,982.06	8,195.50	3,505.69	6,295.08	10,648.43

Expenditure by Codes	2017		
	Jan-Feb	*Mar-Apr	*May-Jun
A. Current Expenditure	6,762.09	8,770.35	9,537.88
Salaries, & Allowances	4,044.46	3,469.32	3,815.67
Expenditure on Goods & Services	1,660.67	2,717.36	3,051.91
Subsidies	-	-	-
Grants	358.70	1,234.00	1,299.50
Social Benefits	4.54	16.77	16.09
Others	693.72	1,332.89	1,354.70
B. Capital Expenditure	8.51	528.07	595.02
Depreciation	-	343.47	281.03
Acquisition of Fixed Assets	8.51	184.60	313.99
Others	-	-	-
C. Loan and Interest and other charges	1.03	159.97	196.03
On Domestic & Foreign Debts (Residents)	-	-	-
To Non-Residents	-	-	-
Others	-	-	-
Domestic Debts Repayment	-	35.42	29.49
External Debts Repayment	-	54.51	44.60
Interest on other Domestic Debt	1.03	64.49	114.85
Interest on Foreign Debt	-	5.54	7.09
Deficit Financing-CBL	-	-	-
Interest on Treasury Bills	-	-	-
Others	-	-	-
D. Other Expenditure	-	-	-
Total Expenditures	6,771.62	9,458.39	10,328.93

Source: Ministry of Finance, Republic of Liberia

** Estimates

3.3: Liberia's Overall Debt Position 2015 - 2017

CENTRAL BANK OF LIBERIA

(In Millions US\$)

Creditors	2015			
	At End-March	At End June	At End Sep	At End Dec
Multilateral	426.81	457.10	343	352
Bilateral	120.53	34.22	34	34
Commercial Creditors	-	-	-	-
Total External Debt	547.33	491.32	377	386
Suppliers' Credit (Valid Claims)	-	-	-	-
Salary & Allowances	3.68	-	-	-
Financial Institutions	278.94	276.44	274	269
Pre- NTGL Salary Arrears	1.32	-	-	-
Others	-	-	-	-
Total Domestic Debt	283.94	276.44	274	269
Total Public Debt	831.28	767.76	652	655

Creditors	2016			
	As at End March	As at End June	As at End Sep	As at End Dec
Multilateral	414.87	415.61	447.72	468.69
Bilateral	33.80	33.12	32.64	38.60
Commercial Creditors	-	-	-	-
Total External Debt	448.68	448.73	480.36	507.29
Suppliers' Credit (Valid Claims)	-	-	-	-
Salary & Allowances	-	-	-	-
Financial Institutions	269.38	268.91	268.29	268.19
Pre- NTGL Salary Arrears	-	-	-	-
Others	0.13	0.13	0.13	0.07
Total Domestic Debt	269.51	269.04	268.42	268.26
Total Public Debt	718.18	717.77	748.78	775.55

Creditors	2017	
	As at End March	*As at End Jun
Multilateral	487.43	528.33
Bilateral	39.37	53.58
Commercial Creditors	-	-
Total External Debt	526.81	581.92
Suppliers' Credit (Valid Claims)	-	-
Salary & Allowances	-	-
Financial Institutions	268.40	267.08
Pre- NTGL Salary Arrears	-	-
Others	0.10	-
Total Domestic Debt	268.50	267.08
Total Public Debt	795.31	849.00

Source: Ministry of Finance, Republic of Liberia

** Estimates

EXTERNAL TRADE

CENTRAL BANK OF LIBERIA

4.1: Exports and Imports in CIF Values 2015- 2017

(Millions of United States Dollars)

Period			2016		2017		Balance of Trade		
	Exports	Imports	Exports	Imports	Exports	Imports	2015	2016	2017
Jan	21.04	219.06	17.90	114.60	14.97	92.33	(198.02)	(96.70)	(77.36)
Feb	20.55	143.54	12.90	104.60	10.60	107.61	(122.99)	(91.70)	(97.01)
Mar	25.80	164.50	13.00	139.10	19.15	119.42	(138.70)	(126.10)	(100.27)
Apr	28.75	152.12	25.60	114.06	15.90	106.01	(123.37)	(88.46)	(90.11)
May	18.82	169.70	16.69	122.65	17.51	85.51	(150.88)	(105.96)	(68.00)
Jun	22.34	129.30	13.99	102.38	18.25	78.28	(106.96)	(88.39)	(60.03)
Jul	52.40	142.10	13.97	104.67			(89.70)	(90.70)	
Aug	19.90	117.80	12.72	103.33			(97.90)	(90.61)	
Sep	17.30	113.40	12.70	103.80			(96.10)	(91.10)	
Oct	20.80	150.80	12.52	100.44			(130.00)	(87.92)	
Nov	20.60	106.90	52.98	101.22			(86.30)	(48.24)	
Dec	20.05	160.60	13.70	86.04			(140.55)	(72.34)	
Total	288.36	1,769.83	218.67	1,296.89			(1,481.46)	(1,078.22)	

4.1a: Commodity Composition of Exports Value-2015

(Thousands of United States Dollars)

Commodity	Jan	Feb	Mar	Apr	May	Jun	Jan-Jun Total
Rubber	8,969.15	5,031.74	1,902.26	3,465.66	5,867.53	8,210.53	33,446.86
Cocoa beans	587.50	387.69	485.00	355.00	1,428.00	715.00	3,958.19
Coffee	-	-	-	-	-	-	-
Round Logs	955.00	3,298.99	325.20	333.68	-	66.42	4,979.29
Iron Ore	5,780.00	7,500.30	18,952.41	20,099.37	7,470.49	8,397.50	68,200.08
Gold	1,838.00	1,233.42	996.69	865.82	1,125.46	515.86	6,575.25
Diamond	2,533.94	2,483.36	2,445.20	3,510.24	2,424.32	4,178.51	17,575.57
Other Commodities	377.97	616.53	697.21	123.52	505.14	260.54	2,580.90
Total	21,041.55	20,552.02	25,803.96	28,753.30	18,820.94	22,344.36	137,316.13

Commodity	Jul	Aug	Sep	Oct	Nov	Dec	Jul-Dec Total	Grand Total
Rubber	1,430.51	18,658.44	2,430.44	5,142.39	6,107.64	3,530.01	37,299.42	70,746.28
Cocoa beans	1,420.00	1,099.25	1,078.08	1,902.50	713.50	2,914.35	9,127.68	13,085.87
Coffee	-	-	-	-	-	-	-	-
Round Logs	-	-	205.19	12.83	0.98	12.94	231.94	5,211.22
Iron Ore	35,467.30	9,828.00	8,747.70	8,840.00	11,638.00	11,245.00	85,766.00	153,966.07
Gold	211.45	291.92	264.30	280.17	181.38	648.79	1,878.01	8,453.26
Diamond	2,383.37	2,362.58	1,689.94	2,145.30	1,720.66	1,633.41	11,935.25	29,510.82
Other Commodities	11,476.94	135.10	2,846.24	2,484.08	258.33	67.50	17,268.18	19,849.08
Total	52,389.56	32,375.28	17,261.90	20,807.28	20,620.47	20,052.00	163,506.48	300,822.61

Source: Ministry of Commerce & Industry and Ministry of Lands, Mines and Energy, Monrovia, Liberia

EXTERNAL TRADE

CENTRAL BANK OF LIBERIA

4.2a: Commodity Composition of Exports Value-2016 & 2017

(Thousands of United States Dollars)

Commodity	Jan	Feb	Mar	Apr	May	Jun	Jan-Jun Total	
Rubber	7,388.46	3,282.05	3,168.05	7,453.73	4,464.78	3,430.72	29,187.80	
Cocoa beans	2,370.00	793.75	1,173.00	1,930.00	628.60	1,248.75	8,144.10	
Coffee	-	-	32.50	-	54.10	-	86.60	
Round Logs	-	-	-	-	36.75	88.98	125.73	
Iron Ore	5,597.90	5,924.80	3,931.00	11,129.90	8,320.32	2,153.91	37,057.83	
Gold	278.74	413.23	550.95	165.85	673.05	291.70	2,373.52	
Diamond	2,891.56	2,184.66	2,766.99	4,627.89	2,243.62	3,196.16	17,910.88	
Other Commodities	193.80	306.75	3,180.86	275.53	272.03	3,586.64	7,815.61	
Total	18,720.5	12,905.2	14,803.4	25,582.9	16,693.2	13,996.9	102,702.07	
Commodity	Jul	Aug	Sep	Oct	Nov	Dec	Jul-Dec Total	Grand Total
Rubber	2,499.84	5,519.24	2,217.60	2,902.12	2,878.15	3,948.38	19,965.34	49,153.14
Cocoa beans	1,000.00	819.12	699.90	42,850.00	1,067.50	353.75	46,790.27	54,934.37
Coffee	-	-	-	-	-	-	-	86.60
Round Logs	-	-	720.99	188.00	-	-	908.99	1,034.72
Iron Ore	-	95,517.84	139,195.12	77,678.57	-	2,568.42	314,959.95	352,017.78
Gold	389.41	403.77	41.53	131.23	348.31	358.65	1,672.90	4,046.42
Diamond	4,448.58	6,899.82	3,851.55	2,057.35	-	3,278.37	20,535.67	38,446.54
Other Commodities	-	-	-	-	1,004.23	3,203.85	4,208.08	12,023.69
Total	8,337.8	109,159.8	146,726.7	125,807.3	5,298.2	13,711.4	409,041.20	511,743.27

4.2b: Commodity Composition of Exports Value -2017

(Thousands of United States Dollars)

Commodity	Jan	Feb	Mar	*Apr	**May	**Jun
Rubber	4,190.12	4,445.45	9,172.47	3,988.07	4,745.14	4,855.22
Cocoa beans	255.00	150.00	-	425.00	176.86	154.35
Coffee	-	-	-	-	-	-
Round Logs	-	229.05	347.49	-	256.07	46.51
Iron Ore	4,552.18	1,353.50	4,285.29	9,255.59	6,919.15	1,791.18
Gold	176.77	280.99	247.28	249.35	199.03	16.08
Diamond	1,794.82	3,746.48	4,092.72	888.79	4,569.66	3,249.75
Other Commodities	3,998.10	386.91	1,003.37	1,094.84	643.85	8,139.57
Total	14,967.0	10,592.4	19,148.6	15,901.6	17,509.8	18,252.67

Source: Ministry of Commerce & Industry and Ministry of Lands, Mines and Energy, Monrovia, Liberia

** Estimates

*Revised

EXTERNAL TRADE

CENTRAL BANK OF LIBERIA

4.3: Commodity Composition of Exports Volume -2015

(In volumes of their respective units of measurements)
(In volumes of their respective units of measurements)

Commodity	Jan	Feb	Mar	Apr	May	Jun
Rubber (Mt)	7,140.00	3,629.00	1,307.00	2,419.20	5,120.00	5,712.00
Cocoa beans (Mt)	410.30	795.00	1,411.00	1,281.00	916.00	1,178.00
Coffee (Mt)	-	-	-	-	-	38.00
Round Logs (M3)	5,112.26	6,428.99	19,389.82	39,862.64	7,534.88	4,043.18
Iron Ore (Mt)	85,000.00	219,000.00	648,000.00	964,302.00	320,000.00	274,000.00
Gold (Ounces)	1,989.00	1,269.00	1,110.00	948.00	1,224.72	571.00
Diamond (Carats)	8,193.00	5,875.00	7,352.49	6,275.16	4,624.84	11,107.00
Other Commodities*	2,970.00	900.00	900.04	1,170.00	1,800.03	1,800.00
Commodity	Jul	Aug	Sep	Oct	Nov	Dec
Rubber (Mt)	1,854.72	5,660.71	1,874.88	3,311.45	3,551.80	2,761.90
Cocoa beans (Mt)	770.40	812.65	-	-	-	-
Coffee (Mt)	-	-	-	-	-	-
Round Logs (M3)	-	12,631.97	402,521.50	402,521.50	-	-
Iron Ore (Mt)	1,545,127.43	379,552.98	206,691.50	287,469.65	310,761.04	378,619.53
Gold (Ounces)	341.13	343.27	305.22	333.54	211.70	809.80
Diamond (Carats)	3,970.92	3,986.61	3,838.66	3,943.56	3,199.62	2,611.10
Other Commodities*	1,000.00	-	-	-	-	-

4.3a: Commodity Composition of Exports Volume -2016

(In volumes of their respective units of measurements)

Commodity	Jan	Feb	Mar	Apr	May	Jun
Rubber (Mt)	7,056.00	3,024.00	2,903.04	5,723.98	3,003.84	2,499.84
Cocoa beans (Mt)	2,788.24	933.82	1,380.00	2,350.00	748.00	3,575.00
Coffee (Mt)	-	-	100.00	-	100.00	-
Round Logs (M3)	-	-	-	-	-	-
Iron Ore (Mt)	154,874.50	146,419.34	80,804.00	317,997.14	171,029.00	101,336.64
Gold (Ounces)	443.22	466.33	579.43	210.45	688.06	310.78
Diamond (Carats)	4,511.99	7,964.70	6,307.73	6,924.06	3,742.92	7,057.04
Other Commodities*	-	-	-	-	-	-

Commodity	Jul	Aug	Sep	Oct	Nov	Dec
Rubber (Mt)	2,499.84	5,519.24	2,217.60	2,902.12	1,955.52	2,393.37
Cocoa beans (Mt)	1,000.00	40,650.00	699.90	42,850.00	6,550.00	2,400.00
Coffee (Mt)	-	-	-	-	-	-
Round Logs (M3)	-	-	720.99	188.00	-	-
Iron Ore (Mt)	-	95,517.84	139,195.12	26,250.00	82,250.00	120,342.30
Gold (Ounces)	389.41	403.77	41.53	131.23	395.45	410.37
Diamond (Carats)	4,448.58	6,899.82	3,851.55	2,057.35	-	5,710.72
Other Commodities	-	-	-	-	-	-

4.3b: Commodity Composition of Exports Volume -2017

(In volumes of their respective units of measurements)

Commodity	Jan	Feb	Mar	*Apr	**May	**Jun
Rubber (Mt)	2,437.84	2,215.84	4,170.58	2,016.00	2,882.88	3,165.12
Cocoa beans (Mt)	850.00	350.00	-	500.00	561.80	221.00
Coffee (Mt)	-	-	-	-	-	-
Round Logs (M3)	-	597.00	706.00	-	547.00	97.00
Iron Ore (Mt)	183,655.55	53,061.88	136,880.89	269,422.55	201,410.74	52,139.90
Gold (Ounces)	196.71	301.30	246.08	243.83	209.03	166.73
Diamond (Carats)	4,068.47	4,754.90	7,045.68	204.20	9,858.23	5,878.12
Other Commodities*	-	-	-	-	-	-

*Includes scrap metals

Sources: Ministry of Commerce & Industry and Ministry of Lands, Mines and Energy, Monrovia, Liberia

* Revised

** Estimates

EXTERNAL TRADE

CENTRAL BANK OF LIBERIA

4.4: Commodity Composition of Imports in CIF values

Thousands of United States Dollars

Commodity	2015						Jan-Jun
	Jan	Feb	Mar	Apr	May	Jun	Total
Food and Live Animals	43,456.45	26,475.77	24,120.88	43,451.95	37,264.78	24,922.21	199,692.04
O/w Commercial Rice	10,526.70	-	1,169.47	24,441.28	5,646.96	5,985.11	47,769.52
O/w Non-Commercial Rice	303.67	-	6,178.20	310.21	2,175.58	415.80	9,383.46
Beverage and Tobacco	1,616.04	2,390.98	2,402.72	2,077.48	2,819.81	4,051.81	15,358.84
Crude Materials	3,010.33	1,984.50	2,126.68	1,724.09	1,778.38	2,378.22	13,002.21
Mineral, Fuels, Lubricants	49,707.41	43,098.82	45,425.83	34,080.09	69,400.54	29,749.33	271,462.01
O/W Petroleum Products	44,200.13	34,948.04	38,532.30	30,098.84	56,648.71	27,236.36	231,664.38
Animal and Vegetable Oil	5,692.85	805.53	1,449.56	4,781.56	1,909.98	1,471.35	16,110.83
Chemicals and Related Products	24,705.33	20,676.95	21,200.23	13,741.91	13,436.92	15,932.69	109,694.04
Manufactured Products	39,093.50	12,335.18	19,739.42	10,910.80	15,897.42	14,578.82	112,555.15
Machinery & Transport Equipment	46,139.82	30,627.51	43,159.70	32,766.67	27,196.76	36,200.03	216,090.50
Miscellaneous Articles ¹	5,640.10	5,146.80	4,874.85	8,587.45	-	-	24,249.21
Total	219,061.84	143,542.03	164,499.88	152,122.01	169,704.59	129,284.46	978,214.81

Commodity	Jul	Aug	Sep	Oct	Nov	Dec	Jul-Dec	Annual Total
Food and Live Animals	40,074.78	18,045.61	33,187.80	54,725.94	11,411.68	17,230.67	174,676.48	374,368.52
O/w Commercial Rice	24,578.53	732.79	10,432.14	36,428.58	830.80	518.99	73,521.83	121,291.35
O/w Non-Commercial Rice	434.72	294.82	381.78	1,154.17	64.93	236.68	2,567.10	11,950.56
Beverage and Tobacco	3,790.75	2,094.49	1,431.92	1,575.84	1,524.48	1,804.49	12,221.97	27,580.81
Crude Materials	3,046.50	2,135.84	2,243.85	2,228.20	1,125.33	1,745.52	12,525.23	25,527.44
Mineral, Fuels, Lubricants	32,715.02	28,621.69	20,370.41	26,785.33	29,153.00	42,651.90	180,297.36	451,759.36
O/W Petroleum Products	31,373.83	22,161.26	15,772.44	23,635.68	22,416.06	35,721.02	151,080.29	382,744.67
Animal and Vegetable Oil	1,191.17	386.57	506.29	4,417.44	253.92	1,075.67	7,831.06	23,941.88
Chemicals and Related Products	10,061.48	14,251.94	8,651.63	16,551.16	9,261.90	9,104.35	67,882.45	177,576.49
Manufactured Products	13,560.44	20,545.65	11,601.08	14,019.02	17,695.32	14,422.07	91,843.58	204,398.73
Machinery & Transport Equipment	37,708.98	31,744.57	31,914.13	27,624.90	32,384.88	68,374.41	229,751.88	445,842.38
Miscellaneous Articles ¹	-	-	3,472.41	2,832.23	4,048.59	4,239.34	14,592.57	38,841.77
Total	142,149.12	117,826.36	113,379.51	150,760.06	106,859.10	160,648.42	791,622.57	1,769,837.38

Commodity	2016						Jan-Jun
	Jan	Feb	Mar	Apr	May	Jun	Total
Food and Live Animals	15,832.40	16,981.94	32,000.65	18,544.79	38,939.28	17,692.10	139,991.16
O/w Commercial Rice	795.55	615.57	12,137.44	221.77	23,561.70	170.54	37,502.59
O/w Non-Commercial Rice	627.13	412.04	297.11	614.23	306.31	530.48	2,787.30
Beverage and Tobacco	1,850.54	1,715.74	2,825.73	2,223.56	1,886.25	2,244.62	12,746.45
Crude Materials	1,612.40	892.85	1,872.55	1,431.88	1,206.21	1,417.42	8,433.31
Mineral, Fuels, Lubricants	37,581.30	42,109.56	39,447.22	33,667.21	30,800.67	26,733.86	210,339.81
O/W Petroleum Products	32,438.93	35,450.01	37,219.00	29,067.68	24,576.68	22,477.85	181,230.15
Animal and Vegetable Oil	4,165.36	1,340.18	967.36	4,831.78	410.75	1,528.60	13,244.02
Chemicals and Related Products	9,280.43	8,351.22	8,234.88	8,447.48	12,263.30	11,379.98	57,957.29
Manufactured Products	12,748.90	9,445.36	13,284.49	17,601.62	11,016.23	12,622.17	76,718.76
Machinery & Transport Equipment	29,006.35	21,394.98	37,339.89	25,369.30	22,687.63	25,275.14	161,073.29
Miscellaneous Articles ¹	2,476.57	2,327.77	3,154.82	1,943.12	3,435.90	3,487.80	16,825.98
Total	114,554.25	104,559.60	139,127.58	114,060.73	122,646.22	102,381.68	697,330.07

Commodity	2016						Jul-Dec	Annual Total
	Jul	Aug	Sep	Oct	Nov	Dec	Total	Total
Food and Live Animals	14,513.05	22,505.62	30,393.35	34,440.55	27,551.75	21,471.57	150,875.89	290,867.05
O/w Commercial Rice	206.06	5,424.51	16,770.62	20,636.05	15,568.07	7,171.48	65,776.80	103,279.39
O/w Non-Commercial Rice	373.45	85.21	399.42	23.04	157.01	859.77	1,897.90	4,685.20
Beverage and Tobacco	2,191.12	2,336.04	2,163.33	1,266.53	1,613.46	1,923.63	11,494.11	24,240.56
Crude Materials	1,312.96	2,405.50	853.16	1,833.43	1,575.55	1,074.12	9,054.71	17,488.01
Mineral, Fuels, Lubricants	38,571.19	20,666.88	19,208.21	25,152.30	29,826.62	21,517.42	154,942.62	365,282.43
O/W Petroleum Products	35,459.62	19,502.36	18,291.80	23,232.32	28,359.29	15,458.15	140,303.53	321,533.69
Animal and Vegetable Oil	819.49	4,534.93	1,005.27	592.73	4,015.51	875.35	11,843.29	25,087.31
Chemicals and Related Products	10,284.77	8,055.19	7,348.33	6,187.98	5,906.22	7,281.13	45,063.62	103,020.92
Manufactured Products	10,162.38	14,424.89	19,863.93	7,726.48	8,732.88	10,441.34	71,351.91	148,070.67
Machinery & Transport Equipment	24,386.37	28,748.90	20,592.78	20,537.62	19,598.78	18,899.99	132,764.43	293,837.72
Miscellaneous Articles ¹	2,426.30	4,652.66	2,369.95	2,707.28	2,397.22	2,560.23	17,113.65	33,939.63
Total	104,667.64	108,330.61	103,798.31	100,444.90	101,217.99	86,044.77	604,504.23	1,301,834.30

Sources: Ministry of Commerce & Industry and Ministry of Finance, Monrovia, Liberia.

¹ Imports not elsewhere mentioned

EXTERNAL TRADE

CENTRAL BANK OF LIBERIA

4.4: Commodity Composition of Imports in CIF values Cont.

Thousands of United States Dollars

Commodity	2017					
	Jan	Feb	Mar	*Apr	**May	**Jun
Food and Live Animals	13,278.21	22,613.79	27,949.32	44,554.59	12,880.40	15,374.89
O/w Commercial Rice	350.56	14,128.12	15,672.88	34,862.34	1,368.66	3,854.22
O/w Non-Commercial Rice	405.89	398.88	617.32	221.90	35.50	797.95
Beverage and Tobacco	1,205.19	1,344.74	1,735.54	1,117.59	2,072.24	1,838.72
Crude Materials	1,375.92	1,177.06	1,370.83	1,151.36	1,557.58	1,376.13
Mineral, Fuels, Lubricants	29,069.08	39,351.69	51,540.83	14,335.61	14,531.43	12,700.76
O/W Petroleum Products	27,658.52	35,729.70	48,512.37	10,809.99	12,317.38	10,909.80
Animal and Vegetable Oil	1,848.80	5,406.93	1,413.23	2,411.09	6,968.86	958.81
Chemicals and Related Products	7,656.19	6,583.86	8,728.31	9,081.57	9,883.09	7,936.18
Manufactured Products	10,807.52	6,572.06	8,457.51	12,458.34	13,967.44	13,948.79
Machinery & Transport Equipment	24,165.43	21,602.93	15,892.40	18,705.67	19,445.30	20,189.62
Miscellaneous Articles ¹	2,925.96	2,961.54	2,337.33	2,192.57	4,201.34	3,958.88
Total	92,332.29	107,614.61	119,425.31	106,008.39	85,507.68	78,282.78

*Revised

**Estimates

EXTERNAL TRADE
CENTRAL BANK OF LIBERIA
4.5: Volume of Imports of Petroleum Products - 2015
 (Volume in gals.)

(Volume in gals.)

2015	Premium	Diesel	Kerosene	Jet fuel	Total
Jan	1,823,451.76	460,500.00	-	-	2,283,951.76
Feb	3,683,797.33	3,661,013.99	-	1,330,927.00	8,675,738.32
Mar	1,382,058.54	1,774,443.68	-	-	3,156,502.22
Apr	2,104,875.27	1,696,134.29	-	-	3,801,009.56
May	3,269,425.02	3,018,478.74	-	-	6,287,903.76
Jun	1,585,463.44	1,677,495.97	-	-	3,262,959.41
Jul	2,120,547.32	1,298,222.11	-	-	3,418,769.42
Aug	1,070,936.82	1,271,255.33	-	-	2,342,192.15
Sep	1,512,700.07	1,061,743.35	-	-	2,574,443.42
Oct	1,489,658.33	907,805.20	-	-	2,397,463.53
Nov	1,521,011.21	1,658,892.97	-	-	3,179,904.18
Dec	2,161,128.06	2,155,291.24	-	-	4,316,419.30
Total	20,042,913.91	16,827,092.64	-	1,330,927.00	38,200,933.55

4.5a: Volume of Imports of Petroleum Products - 2016

(Volume in gals.)

2016	Premium	Diesel	Kerosene	Jet fuel	Total
Jan	1,670,668.08	2,007,148.52	-	-	3,677,816.61
Feb	1,359,293.42	3,443,363.82	-	-	4,802,657.24
Mar	1,513,164.96	2,222,177.24	-	-	3,735,342.20
Apr	1,249,553.53	1,654,800.83	-	-	2,904,354.36
May	902,669.85	2,012,469.99	-	-	2,915,139.84
Jun	1,308,391.59	1,349,968.59	-	-	2,658,360.19
Jul	3,342,627.86	2,347,700.04	-	-	5,690,327.90
Aug	1,876,968.02	819,295.41	-	-	2,696,263.43
Sep	1,165,752.43	1,452,574.43	-	-	2,618,326.86
Oct	1,615,323.74	1,918,693.17	-	-	3,534,016.91
Nov	2,543,342.64	1,639,706.08	-	-	4,183,048.72
Dec	1,311,232.09	930,015.57	-	-	2,241,247.66
Total	19,858,988.22	21,797,913.68	-	-	41,656,901.90

4.5b: Volume of Imports of Petroleum Products - 2017

(Volume in gals.)

2017	Premium	Diesel	Kerosene	Jet fuel	Total
Jan	13,116,160.79	14,542,362.20	-	-	27,658,522.99
Feb	12,504,648.23	23,225,055.20	-	-	35,729,703.43
Mar	2,990,944.33	3,452,651.43	-	-	6,443,595.75
Apr	789,351.13	805,224.22	-	-	1,594,575.35
May	889,608.47	932,950.53	-	-	1,822,558.99
Jun	779,500.89	800,741.76	-	-	1,580,242.65
Total	31,070,213.83	43,758,985.34	-	-	74,829,199.18

Source: Ministry of Commerce & Industry and Central Bank of Liberia