

	Jan.10	Feb.10	Mar.10	Apr.10
1 Monetary	<i>(Millions of US\$)</i>			
CBL Net Foreign Exchange Reserves Position (Including SDRs)	272.8	272.3	268.5	264.9
	<i>(Millions of L\$)</i>			
Liberian Dollars in Circulation	4,460.0	4,461.6	4,389.4	4,269.0
Money Supply (M1) in L\$ only	4,774.2	4,862.6	4,824.2	4,481.7
Broad money (M2) in L\$ only	6,246.6	6,369.0	6,340.2	6,200.4
Broad money (M2) in both L\$ and US\$*	24,407.7	24,360.4	23,402.4	25,254.1
	<i>(In percent)</i>			
Liberian Dollar share of Broad Money	25.6	26.1	27.1	24.6
Interest Rates				
- Lending rate	14.1	14.2	14.2	14.2
-Average Deposit rates				
-Savings	2.0	2.0	2.0	2.0
-Time	4.3	4.2	3.9	4.0
	<i>(Millions of L\$)</i>			
Commercial banks loans to private sector - US\$	128.5	132.4	132.00	128.90
Commercial banks loans to private sector - L\$	701.4	735.4	749.4	735.7
- Demand Deposits of commercial banks				
Demand deposits - US\$	186.5	182.4	176.7	198.6
Demand deposits - L\$	1,036.2	1,071.8	1,062.5	950.7
- Time & Savings Deposits of commercial banks				
Time & savings deposits - US\$	65.8	65.8	62.0	67.9
Time & savings deposits - L\$	4,736.1	4,769.6	4,430.6	4,855.1
Remittances	<i>(Millions of US\$)</i>			
Inflows	76.4	72.6	85.8	78.8
Outflows	52.4	97.5	81.9	76.4
Netflows	24.1	-24.91	3.84	2.38
2 CBL's Foreign Exchange Auction	5.1	3.7	8.9	5.9
3 Exchange Rate	<i>L\$ per US\$</i>			
End of Period	72.00	72.50	71.50	71.50
Period Average	71.33	71.78	71.59	70.79
4 Financial Soundness Indicators (FSI)	<i>(In percent)</i>			
Capital adequacy ratio (CAR)**	24.5	27.3	27.5	27.8
Non-performing Loans to Total Loans	10.50	11.50	11.00	10.60
Non-performing Loans (percentage change)	-0.7	14.3	-5.8	-4.5
Returns on Assets	-0.06	0.14 [†]	0.20	0.10
Returns on Equity (ROE)	-0.32	0.8 [†]	0.80	0.40
Liquidity Ratio***	43.40	43.90	45.00	45.10

*US\$ converted to L\$

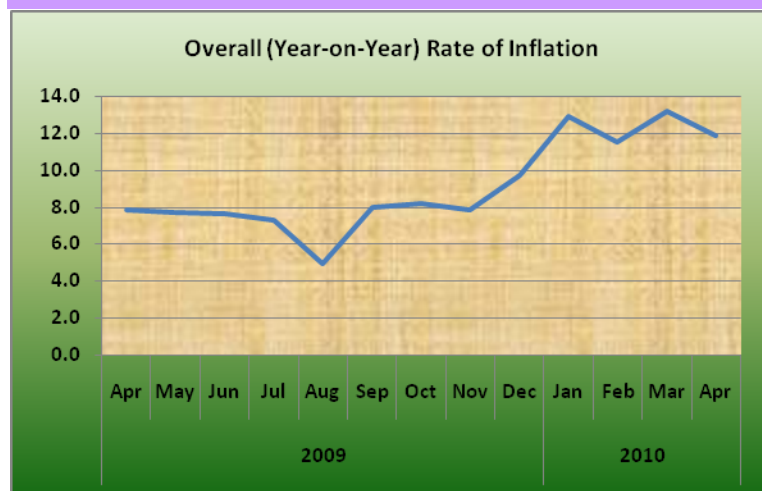
**The Minimum Capital Adequacy Ratio is 10%

***The Required Minimum Liquidity Ratio is 15%

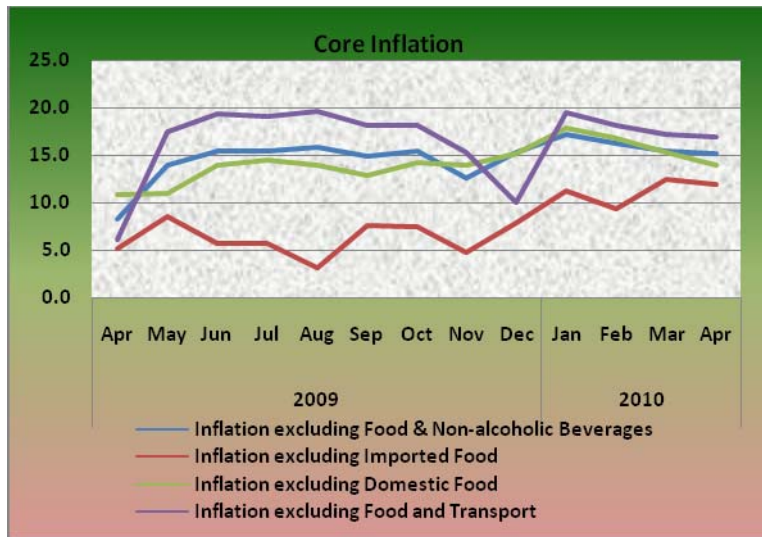
1

	Jan.10	Feb.10	Mar.10	Apr.10
5a External Trade	<i>(Millions of US\$)</i>			
Exports	19.3	13.5 [†]	9.0	6.5
- O/w Rubber	14.4	10.7	5.2	4.2
Imports	33.9	25.4	48.3	72.4
- O/w Rice				
Commercial	11.0	1.9	5.1	5.9
Non-commercial	1.3	0.5	0.5	0.4
- Petroleum Products	7.6	1.2	17.4	30.9
Trade Balance	-14.6	-14.0	-39.3	-65.9
5b External Trade	<i>(Metric Tons)</i>			
- Rubber	6,387.4	4,019.6	3,053.4	2,390.6
- Rice Imports O/w				
Commercial	2,461.8	4,054.0	11,000.0	13,914.0
Non-commercial	1,857.9	911.5	910.5	375.8
- Petroleum Products	9,995	1,500	24,747	41,224
	<i>(In percent)</i>			
6 Overall (Year-on-year) Rate of Inflation	12.9	11.5	13.2	11.9
a. Food and Non-alcoholic Beverages Inflation	9.4	6.7	11.0	8.7
- Domestic Food Inflation	0.5	-3.7	6.4	5.5
- Imported Food Inflation	19.3	17.9	15.3	11.6
b. Transport Inflation	3.4	4.3	4.0	4.1
c. Imported Fuels Inflation	23.3	32.3	32.2	33.0
Core Inflation	<i>(In percent)</i>			
Inflation excluding Food & Non-alcoholic Beverages	17.2	16.3	15.5	15.2
Inflation excluding Imported Food	11.3	9.4	12.5	12.0
Inflation excluding Domestic Food	17.9	16.8	15.4	14.0
Inflation excluding Food and Transport	19.5	18.2	17.3	16.9

[†]Revised



2



CENTRAL BANK OF LIBERIA



Fact Sheet on Key Economic and Financial Indicators

April, 2010



CENTRAL BANK OF LIBERIA

Corner of Warren and Carey Streets
 P. O. Box 2048, Monrovia
 Tel: 231-5-960557/5-960556
 Fax: (231) 770-59642
 Website: www.cbl.org.lr