

	Oct.09	Nov.09	Dec.09	Jan.10
1 Monetary	<i>(Millions of US\$)</i>			
CBL Net Foreign Exchange Reserves Position (Including SDRs)	256.2	257.2	262.0	272.8
	<i>(Millions of L\$)</i>			
Liberian Dollars in Circulation	3,903.3	3,930.9	4,583.4	4,460.0
Money Supply (M1) in L\$ only	4,546.8	4,521.9	5,030.1	4,774.2
Broad money (M2) in L\$ only	6,181.7	6,210.3	6,400.3	6,246.6
Broad money (M2) in both L\$ and US\$*	22,465.0	21,789.0	24,235.3	24,407.7
	<i>(In percent)</i>			
Liberian Dollar share of Broad Money	27.5	28.5	26.4	25.6
Interest Rates				
- Lending rate	14.3	14.2	14.1	14.1
-Average Deposit rates				
-Savings	2.0	2.0	2.0	2.0
-Time	4.2	4.1	4.3	4.3
	<i>(Millions of L\$)</i>			
Commercial banks loans to private sector - US\$	118.3	121.8	124.6	128.5
Commercial banks loans to private sector - L\$	655.6	715.9	708.9	701.4
- Demand Deposits of commercial banks				
Demand deposits - US\$	167.8	168.0	188.9	186.5
Demand deposits - L\$	1,165.2	948.8	868.3	1,036.2
- Time & Savings Deposits of commercial banks				
Time & savings deposits - US\$	63.1	62.8	64.0	65.8
Time & savings deposits - L\$	1,634.9	1,688.4	4,514.2	4,736.1
Remittances	<i>(Millions of US\$)</i>			
Inflows	71.6	72.3	71.3	76.4
Outflows	60.0	61.9	72.3	52.4
Netflows	11.6	10.5	-1.0	24.1
2 CBL's Foreign Exchange Auction	5.5	4.2	4.2	4.5
3 Exchange Rate	<i>L\$ per US\$</i>			
End of Period	70.50	67.50	70.50	72.00
Period Average	71.07	67.86	67.81	71.33
4 Financial Soundness Indicators (FSI)	<i>(In percent)</i>			
Capital adequacy ratio (CAR)**	28.0	28.4	28.1	25.3
Non-performing Loans to Total Loans	13.39	13.77	10.90	10.50
Non-performing Loans (percentage change)	-1.0	1.1	-14.6	-0.7
Returns on Assets	0.23	0.25	0.65	-0.06
Returns on Equity (ROE)	1.30	1.39	3.44	-0.31
Liquidity Ratio***	46.7	43.32	42.50	43.40

*US\$ converted to L\$

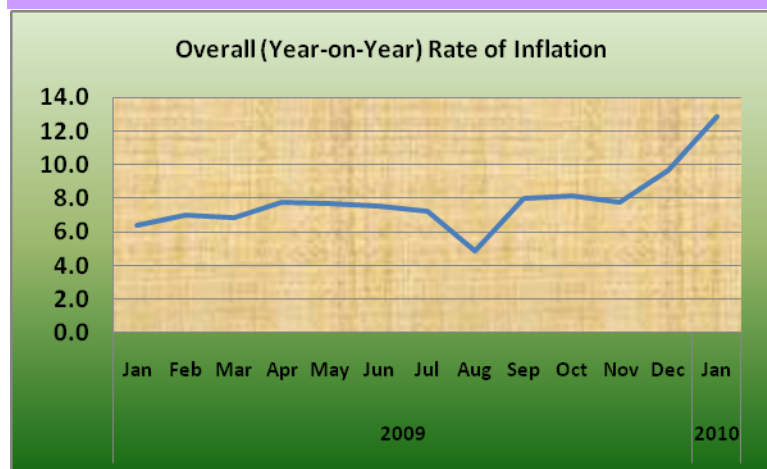
**The Minimum Capital Adequacy Ratio is 10%

***The Required Minimum Liquidity Ratio is 15%

1

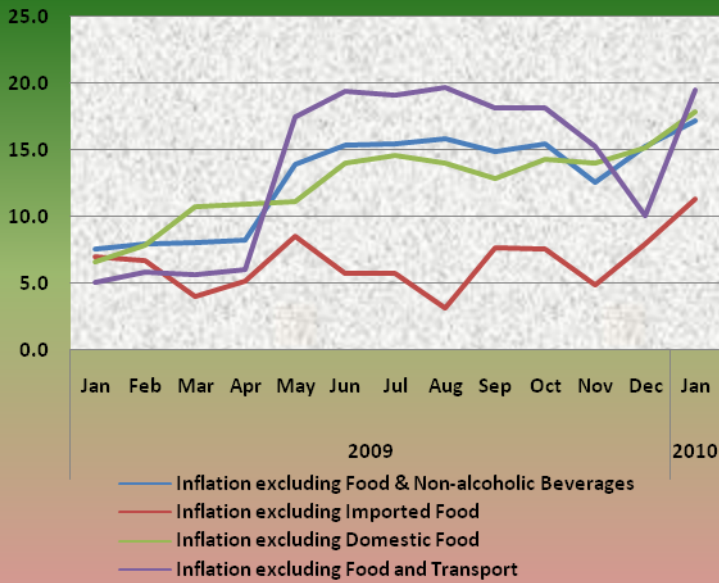
	Oct.09	Nov.09	Dec.09	Jan.10
5a External Trade	<i>(Millions of US\$)</i>			
Exports	18.6 [†]	9.6 [†]	17.6 [†]	19.3
- O/w Rubber	14.2 [†]	7.6 [†]	12.2 [†]	14.4
Imports	47 [†]	20 [†]	31.2 [†]	33.9
- O/w Rice				
Commercial	2.6	0.2 [†]	5.0 [†]	11.0
Non-commercial	0.9	0.0 [†]	0.0	1.3
- Petroleum Products	7.6 [†]	0.0 [†]	11.2 [†]	7.6
Trade Balance	-28.4 [†]	-10.4 [†]	-13.6 [†]	-14.6
5b External Trade	<i>(Metric tons)</i>			
- Rubber	6,869.5 [†]	3,806.5 [†]	5,720.1 [†]	6,387.4
- Rice Imports O/w				
Commercial	5,119.2 [†]	1,774.0 [†]	2,219.0 [†]	2,461.8
Non-commercial	1,388.5 [†]	0.0 [†]	0.0	1,857.9
- Petroleum Products	12,198.8 [†]	0.0 [†]	16,150.5 [†]	9,995
	<i>(In percent)</i>			
6 Overall (Year-on-year) Rate of Inflation	8.2	7.8	9.7	12.9
a. Food and Non-alcoholic Beverages Inflation	2.3	3.1	4.2	9.4
- Domestic Food Inflation	-6.5	-9.1	-5.7	0.5
- Imported Food Inflation	12.0	17.0	14.9	19.3
b. Transport Inflation	-3.5	-2.6	1.6	3.4
c. Imported Fuels Inflation	-10.2	-17.0	10.4	23.3
Core Inflation	<i>(In percent)</i>			
Inflation excluding Food & Non-alcoholic Beverages	15.5	12.6	15.3	17.2
Inflation excluding Imported Food	7.5	4.8	7.9	11.3
Inflation excluding Domestic Food	14.3	14.0	15.2	17.9
Inflation excluding Food and Transport	18.2	15.3	10.1	19.5

[†]Revised



2

Core Inflation



CENTRAL BANK OF LIBERIA



Fact Sheet on Key Economic and Financial Indicators

January, 2010



CENTRAL BANK OF LIBERIA

Corner of Warren and Carey Streets
P. O. Box 2048, Monrovia
Tel: 231-5-960557/5-960556
Fax:(231) 770-59642
Website: www.cbl.org.lr