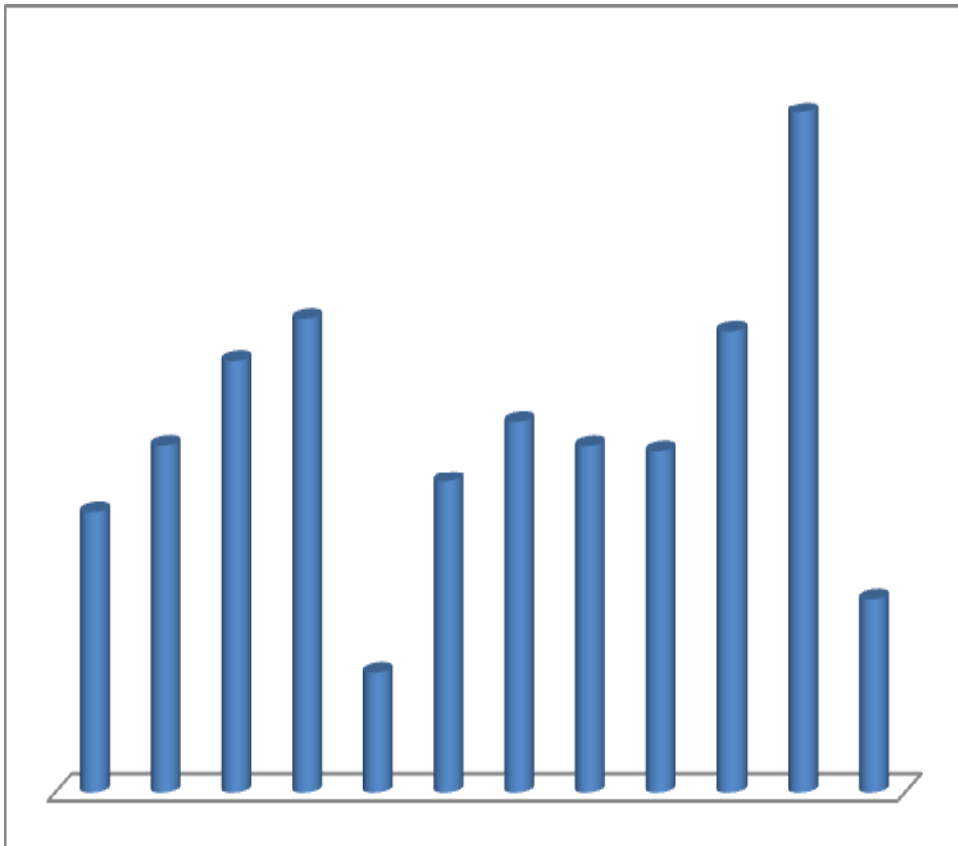




## ***CENTRAL BANK OF LIBERIA***



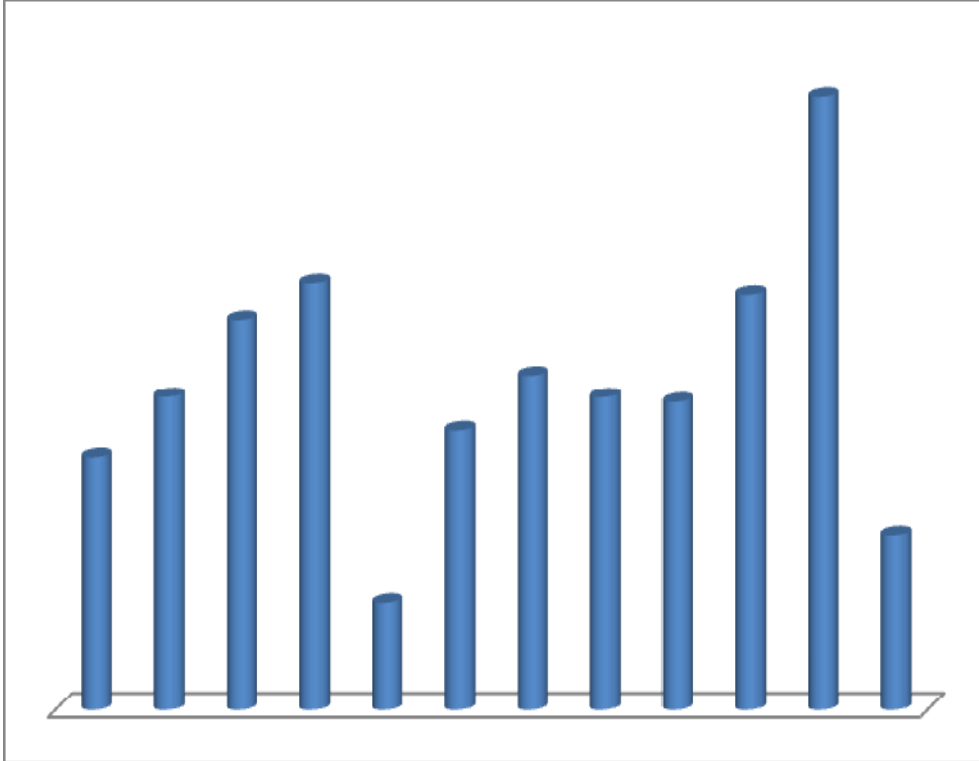
# **Liberia Financial STATISTICS**

**Vol. 15, No.1  
Jan-Feb, 2013**

Research, Policy and Planning Department  
Monrovia, Liberia



# ***CENTRAL BANK OF LIBERIA***



# **Liberia Financial STATISTICS**

---

THE LIBERIA FINANCIAL STATISTICS (LFS) is produced by the Bank's Research, Policy and Planning Department. Inquiries concerning this publication should be addressed to:

**The Director  
Research, Policy and Planning Department  
Central Bank of Liberia  
Warren and Carey Streets  
P. O. Box 2048  
Monrovia, Liberia**

**Telephone #s: 00(231/886516006/886449833  
Fax #s: 00(231) 077059642  
Swift :CBLRRLM**

---

# Table of Contents

<i>INTRODUCTION</i>		-ii-
	<i>Statistics</i>	<i>I - 45</i>
<b>1</b>	<b><i>MONEY AND BANKING</i></b>	<b><i>I - 26</i></b>
1.1a	Depository Corporations Survey – 2011	1-2
1.1b	Depository Corporations Survey –2012 - 2013	3-4
1.2a	Sectoral Balance Sheet of Other Depository Corp. –2011	5-6
1.2b	Sectoral Balance Sheet of Other Depository Corp. –2012 - 2013	7-8
1.3a	Sectoral Balance Sheet of Central Bank of Liberia – 2011	9-10
1.3b	Sectoral Balance Sheet of Central Bank of Liberia – 2012 - 2013	11-12
1.4a	Commercial Banks’ Loans by Economic Sectors – 2011	13-14
1.4b	Commercial Banks’ Loans by Economic Sectors – 2012-2013	15-16
1.5	Commercial Banks’ Interest Rate – 2011-2013	17
1.6	Liberian Dollar Exchange Rates – Period Averages – 2011-2013	18
1.7	Liberian Dollar Exchange Rates –End of Period – 2011-2013	19
1.8	Liberian Dollar Exchange Rates – Jan-Feb, 2013	20
1.9	Commercial Banks’ Inflows and Outflows – 2011-2013	21
1.10a	Central Bank of Liberia FX Auction – 2011	22-23
1.10b	Central Bank of Liberia FX Auction – 2012	24-25
1.10c	Central Bank of Liberia FX Auction – 2013	26
<b>2</b>	<b><i>REAL SECTOR</i></b>	<b><i>27-38</i></b>
2.1a	Harmonized Consumer Price Index – 2011	27
2.1b	Harmonized Consumer Price Index – 2012 - 2013	28
2.2a	HCPI Inflation Rates – 2011	29
2.2b	HCPI Inflation Rates – 2012 - 2013	30
2.3a	Key Output Volume – 2011	31-32
2.3b	Key Output Volume – 2012 - 2013	33-34
2.4a	Key Output Value – 2011	35-36
2.4b	Key Output Value – 2012 - 2013	37-38
<b>3</b>	<b><i>GOVERNMENT FINANCE</i></b>	<b><i>39-40</i></b>
3.1	Government Revenue & Expenditure– 2012 - 2013	39
3.2	Summary Estimates of Liberia’s Public Debt Stock and Status as at Feb. 28, 2013	40
<b>4</b>	<b><i>EXTERNAL TRADE</i></b>	<b><i>41-45</i></b>
4.1	Exports and Imports – 2011-2013	41
4.2a	Commodity Composition of Exports – 2011	41
4.2b	Commodity Composition of Exports – 2012 - 2013	42
4.3a	Commodity Composition of Imports – 2011	43
4.3b	Commodity Composition of Imports – 2012 - 2013	44
4.4	Volume of Imports of Petroleum Products – 2011-2013	45

# Introduction

The LFS (Liberia Financial Statistics) is a major source of statistical reference for policy makers, investors, researchers, academicians and the public in general. It compiles selected macroeconomic and financial data with the expressed objective of producing reliable and accurate database for users of statistics. It is updated bi-monthly.

This first edition of the year 2013 covers both macroeconomic and financial data from January 2011 to February 2013. The arrangement of this edition remains practically the same as previous editions. The graph on the cover page shows the import data for a period of one year (March 2012 to February 2013).

The Department (Research, Policy & Planning Department) of the Central Bank of Liberia extends gratitude to all data providers who continuously contribute immensely to this publication.

**MONEY AND BANKING**

CENTRAL BANK OF LIBERIA

**1.1b: Depository Corporations Survey - 2011**

Millions of Liberian Dollars

	Jan-11	Feb-11	Mar-11	Apr-11	May-11	Jun-11
<b>Foreign Assets (net)</b>	<b>22,475.0</b>	<b>21,539.7</b>	<b>22,015.0</b>	<b>22,571.8</b>	<b>25,146.2</b>	<b>22,892.3</b>
Foreign Assets (MA)	34,091.0	33,391.4	33,806.4	34,455.9	36,120.2	35,660.7
(-) Foreign Liabilities (MA)	20,253.8	20,321.3	20,404.4	20,986.1	20,735.6	20,800.5
Foreign Assets (CoB)	9,699.2	9,719.0	9,894.2	10,510.7	11,157.5	9,418.0
(-) Foreign Liabilities (CoB)	1,061.4	1,249.4	1,281.2	1,408.6	1,395.9	1,386.0
<b>Domestic Credit</b>	<b>26,660.1</b>	<b>27,936.0</b>	<b>28,137.5</b>	<b>28,892.9</b>	<b>28,086.6</b>	<b>29,516.2</b>
Claims on General Government (net)	11,562.9	12,484.5	12,460.0	12,774.5	11,759.2	13,135.5
Claims on General Government (MA)	18,969.6	18,907.5	18,845.3	18,969.4	18,968.7	19,094.2
(-) General Government Deposits (MA)	7,214.7	6,208.7	6,035.9	5,731.9	6,709.5	5,390.4
Claims on General Government (CoB)	467.6	455.2	453.6	456.8	445.9	448.9
(-) General Government Deposits (CoB)	659.6	669.6	803.0	919.8	945.9	1,017.3
Claims on Public Corporations (MA)	0.0	0.0	0.0	0.0	0.0	0.0
Claims on Public Corporations (CoB)	920.1	845.3	886.3	860.8	853.6	893.0
Claims on Private Sector (MA)	362.5	363.8	353.2	357.0	357.1	359.8
Claims on Private Sector (CoB)	13,744.7	14,189.1	14,365.9	14,808.1	15,007.9	14,990.9
Claims on NBFIs (MA)	0.0	0.0	0.0	0.0	0.0	0.0
Claims on NBFIs (CoB)	69.9	53.2	72.2	92.6	108.9	137.1
<b>Money</b>	<b>31,523.4</b>	<b>31,672.1</b>	<b>32,697.8</b>	<b>33,718.9</b>	<b>35,272.5</b>	<b>35,666.9</b>
Currency Outside Banks (MA)	4,615.5	4,583.4	4,726.9	4,809.2	4,700.5	4,924.6
Liberian Currency in Circulation (MA)	5,496.0	5,528.1	5,605.9	5,653.9	5,626.1	5,647.3
(-) Currency Holdings (CoB)	880.5	944.8	879.0	844.7	925.6	722.7
<b>Demand Deposits</b>	<b>18,844.3</b>	<b>18,491.2</b>	<b>18,789.7</b>	<b>19,503.7</b>	<b>20,993.1</b>	<b>20,725.8</b>
Demand Deposits (MA)	971.0	1,007.0	1,020.8	1,024.3	1,042.7	1,073.5
Demand Deposits (CoB)	17,873.3	17,484.2	17,768.9	18,479.3	19,950.4	19,652.3
<b>Other Deposits</b>	<b>8,063.7</b>	<b>8,597.5</b>	<b>9,181.2</b>	<b>9,406.1</b>	<b>9,579.0</b>	<b>10,016.6</b>
Other Deposits (MA)	122.8	27.7	224.2	172.9	124.1	93.0
Time and Savings Deposits (CoB)	7,940.8	8,569.8	8,957.0	9,233.2	9,454.9	9,923.5
<b>Bonds and Securities (CoB)</b>	<b>0.0</b>	<b>0.0</b>	<b>0.0</b>	<b>0.0</b>	<b>0.0</b>	<b>0.0</b>
<b>Restricted Deposits</b>	<b>53.2</b>	<b>52.8</b>	<b>52.8</b>	<b>52.8</b>	<b>52.8</b>	<b>52.8</b>
<b>Capital Accounts</b>	<b>26,917.3</b>	<b>27,311.4</b>	<b>26,973.2</b>	<b>27,442.0</b>	<b>27,068.3</b>	<b>26,826.0</b>
Capital Accounts (MA)	17,694.6	17,550.5	17,412.5	17,792.4	17,466.9	17,677.0
Capital Accounts (CoB)	9,222.7	9,760.9	9,560.8	9,649.5	9,601.4	9,148.9
<b>Other Items (net)</b>	<b>(9,236.0)</b>	<b>(9,532.9)</b>	<b>(9,347.1)</b>	<b>(9,576.0)</b>	<b>(9,036.7)</b>	<b>(10,044.3)</b>
Unclassified Liabilities (MA)	9,513.1	9,603.2	9,816.8	9,906.2	9,857.5	9,868.4
(-) Unclassified Assets (MA)	15,027.6	15,077.4	15,154.4	15,764.4	15,583.0	15,665.5
(-) Unclassified Assets (CoB)	6,267.0	6,072.1	6,240.9	6,626.9	6,379.0	6,490.4
Unclassified Liabilities (CoB)	4,224.6	3,911.3	4,004.3	4,498.6	4,246.8	4,002.4
Commercial Banks' Deposits (MA)	7,779.8	8,128.2	8,493.5	8,856.0	10,079.8	10,860.5
(-) Reserves (CoB)	9,063.0	9,550.2	9,703.8	10,069.5	10,878.8	11,989.2
Currency Holdings (CoB)	880.5	944.8	879.0	844.7	925.6	722.7
Liabilities to Central Bank (CoB)	108.8	108.4	108.0	108.8	108.8	109.5
(-) Claims on Domestic Banks (MA)	607.7	647.3	867.2	586.0	625.6	643.0
(-) Claims on Central Bank of Liberia (CoB)	894.2	903.4	900.4	906.5	906.5	906.5
(-) Unbalanced Items	116.8	21.6	217.9	163.0	117.9	86.8
<b>Vertical Check</b>	<b>0.0</b>	<b>0.0</b>	<b>0.0</b>	<b>0.0</b>	<b>(0.0)</b>	<b>0.0</b>

NBFIs: Non-Bank Financial Institutions

Source: Central Bank of Liberia, Monrovia, Liberia.

## MONEY AND BANKING

**1.1b: Depository Corporations Survey - 2011- Continued**

Millions of Liberian Dollars

	Jul-11	Aug-11	Sep-11	Oct-11	Nov-11	Dec-11
<b>Foreign Assets (net)</b>	<b>24,209.4</b>	<b>24,288.7</b>	<b>24,705.0</b>	<b>23,287.9</b>	<b>22,546.8</b>	<b>26,814.5</b>
Foreign Assets (MA)	35,704.5	36,292.2	35,876.0	35,589.4	35,391.8	37,963.0
(-) Foreign Liabilities (MA)	20,681.6	20,807.8	20,664.1	20,664.3	20,545.7	20,832.7
Foreign Assets (CoB)	10,379.9	10,012.7	10,200.7	9,146.8	8,521.3	10,723.2
(-) Foreign Liabilities (CoB)	1,193.4	1,208.3	707.7	784.0	820.7	1,039.0
<b>Domestic Credit</b>	<b>30,187.4</b>	<b>30,212.8</b>	<b>31,834.9</b>	<b>32,321.2</b>	<b>33,252.2</b>	<b>34,458.6</b>
Claims on General Government (net)	13,936.3	13,204.8	14,412.1	14,153.5	14,964.8	15,283.3
Claims on General Government (MA)	18,969.7	18,969.3	18,845.4	18,852.3	18,727.7	18,976.7
(-) General Government Deposits (MA)	4,526.3	5,371.7	4,134.9	4,278.5	3,299.1	3,100.9
Claims on General Government (CoB)	445.9	445.9	500.3	442.8	439.7	424.2
(-) General Government Deposits (CoB)	953.0	838.6	798.7	863.0	903.6	1,016.7
Claims on Public Corporations (MA)	0.0	0.0	0.0	0.0	0.0	0.0
Claims on Public Corporations (CoB)	780.9	958.3	1,080.2	719.3	692.3	719.2
Claims on Private Sector (MA)	357.7	361.4	360.2	346.4	214.0	421.6
Claims on Private Sector (CoB)	14,977.5	15,542.9	15,880.6	16,985.8	17,289.3	17,934.2
Claims on NBFIs (MA)	0.0	0.0	0.0	0.0	0.0	0.0
Claims on NBFIs (CoB)	135.0	145.4	101.9	116.1	91.8	100.4
<b>Money</b>	<b>36,214.7</b>	<b>36,583.8</b>	<b>40,737.4</b>	<b>41,022.0</b>	<b>41,038.2</b>	<b>44,634.6</b>
Currency Outside Banks (MA)	5,071.8	5,026.5	5,124.3	5,463.4	6,022.4	6,704.3
Liberian Currency in Circulation (MA)	5,660.9	5,696.2	5,710.5	5,958.0	6,534.8	7,251.6
(-) Currency Holdings (CoB)	589.1	669.7	586.2	494.5	512.4	547.3
<b>Demand Deposits</b>	<b>20,967.5</b>	<b>21,765.3</b>	<b>23,527.7</b>	<b>23,938.0</b>	<b>23,341.4</b>	<b>24,601.1</b>
Demand Deposits (MA)	1,062.8	1,112.4	1,088.4	1,178.5	1,215.1	1,236.4
Demand Deposits (CoB)	19,904.6	20,652.8	22,439.3	22,759.5	22,126.3	23,364.7
<b>Other Deposits</b>	<b>10,175.4</b>	<b>9,792.1</b>	<b>12,085.4</b>	<b>11,620.5</b>	<b>11,674.3</b>	<b>13,329.2</b>
Other Deposits (MA)	80.9	(411.9)	1,062.4	136.9	114.9	1,973.4
Time and Savings Deposits (CoB)	10,094.5	10,204.0	11,023.0	11,483.7	11,559.5	11,355.8
<b>Bonds and Securities (CoB)</b>	<b>0.0</b>	<b>0.0</b>	<b>0.0</b>	<b>0.0</b>	<b>0.0</b>	<b>0.0</b>
<b>Restricted Deposits</b>	<b>52.8</b>	<b>51.7</b>	<b>51.7</b>	<b>54.1</b>	<b>54.1</b>	<b>54.1</b>
<b>Capital Accounts</b>	<b>26,790.3</b>	<b>27,447.1</b>	<b>27,252.1</b>	<b>27,191.9</b>	<b>27,110.5</b>	<b>26,913.6</b>
Capital Accounts (MA)	17,546.6	17,489.5	17,260.9	17,170.8	17,102.0	16,732.6
Capital Accounts (CoB)	9,243.7	9,957.6	9,991.1	10,021.1	10,008.4	10,181.0
<b>Other Items (net)</b>	<b>(8,580.1)</b>	<b>(9,993.0)</b>	<b>(10,438.8)</b>	<b>(12,522.1)</b>	<b>(12,288.8)</b>	<b>(8,355.8)</b>
Unclassified Liabilities (MA)	10,782.3	10,851.4	10,789.4	10,820.8	10,572.0	11,453.5
(-) Unclassified Assets (MA)	15,579.3	15,676.5	16,100.9	16,084.2	16,041.8	16,216.7
(-) Unclassified Assets (CoB)	6,400.9	6,843.2	8,890.3	10,885.3	10,999.3	8,824.9
Unclassified Liabilities (CoB)	4,252.0	4,174.6	4,668.9	5,237.1	5,902.5	5,311.0
Commercial Banks' Deposits (MA)	10,904.1	11,071.4	11,149.2	11,304.8	11,654.6	11,914.6
(-) Reserves (CoB)	11,757.4	12,323.2	12,215.7	12,095.9	12,536.2	12,780.4
Currency Holdings (CoB)	589.1	669.7	586.2	494.5	512.4	547.3
Liabilities to Central Bank (CoB)	108.8	108.8	108.0	108.0	107.3	108.8
(-) Claims on Domestic Banks (MA)	647.0	701.9	689.7	653.0	675.4	930.6
(-) Claims on Central Bank of Liberia (CoB)	906.5	906.0	899.8	899.8	893.6	906.0
(-) Unbalanced Items	74.7	(418.0)	1,056.1	130.8	108.6	1,967.6
<b>Vertical Check</b>	<b>(0.0)</b>	<b>(0.0)</b>	<b>0.0</b>	<b>(0.0)</b>	<b>0.0</b>	<b>0.0</b>

NBFIs: Non-Bank Financial Institutions

Source: Central Bank of Liberia, Monrovia, Liberia.

**MONEY AND BANKING**

CENTRAL BANK OF LIBERIA

**1.1c: Depository Corporations Survey - 2012**

Millions of Liberian Dollars

	Jan-12	Feb-12	Mar-12	Apr-12	May-12	Jun-12
<b>Foreign Assets (net)</b>	<b>27,538.9</b>	<b>26,345.9</b>	<b>27,469.0</b>	<b>26,215.5</b>	<b>25,244.0</b>	<b>25,546.0</b>
Foreign Assets (MA)	39,000.0	38,195.1	38,970.8	39,755.2	39,613.2	37,821.8
(-) Foreign Liabilities (MA)	21,103.9	21,104.0	21,247.4	21,261.9	21,822.0	21,391.0
Foreign Assets (CoB)	10,404.8	11,847.6	12,626.2	10,353.5	10,043.3	11,609.9
(-) Foreign Liabilities (CoB)	762.0	2,592.7	2,880.6	2,631.2	2,590.6	2,494.7
<b>Domestic Credit</b>	<b>33,489.3</b>	<b>34,764.6</b>	<b>34,516.3</b>	<b>33,845.5</b>	<b>37,126.0</b>	<b>35,785.9</b>
Claims on General Government (net)	13,683.1	14,489.2	13,830.3	12,915.8	14,947.0	14,376.4
Claims on General Government (MA)	19,225.4	19,226.1	19,350.3	19,350.3	19,848.4	20,964.7
(-) General Government Deposits (MA)	4,933.7	4,098.5	4,816.8	5,736.3	4,116.5	5,679.7
Claims on General Government (CoB)	430.0	416.1	421.8	421.8	421.8	413.5
(-) General Government Deposits (CoB)	1,038.6	1,054.5	1,125.0	1,120.0	1,206.7	1,322.1
Claims on Public Corporations (MA)	0.0	0.0	0.0	0.0	0.0	0.0
Claims on Public Corporations (CoB)	1,053.9	1,187.5	1,279.3	1,264.6	1,354.9	1,457.0
Claims on Private Sector (MA)	426.0	341.5	345.1	347.3	361.2	354.9
Claims on Private Sector (CoB)	18,238.4	18,660.6	18,946.9	19,203.3	20,353.8	19,484.5
Claims on NBFIs (MA)	0.0	0.0	0.0	0.0	0.0	0.0
Claims on NBFIs (CoB)	87.8	85.8	114.7	114.5	108.9	113.0
<b>Money</b>	<b>43,180.9</b>	<b>41,669.9</b>	<b>38,975.8</b>	<b>41,410.4</b>	<b>42,906.4</b>	<b>42,424.3</b>
Currency Outside Banks (MA)	6,157.1	6,091.6	6,094.3	5,908.7	6,021.0	5,778.0
Liberian Currency in Circulation (MA)	7,144.4	7,263.5	7,339.6	7,354.7	7,296.7	7,173.5
(-) Currency Holdings (CoB)	987.3	1,171.8	1,245.3	1,446.0	1,275.7	1,395.5
<b>Demand Deposits</b>	<b>24,427.4</b>	<b>23,431.7</b>	<b>20,827.1</b>	<b>23,393.5</b>	<b>24,566.2</b>	<b>24,451.7</b>
Demand Deposits (MA)	1,253.1	1,319.0	1,351.4	1,366.8	343.9	355.6
Demand Deposits (CoB)	23,174.3	22,112.7	19,475.7	22,026.6	24,222.3	24,096.2
<b>Other Deposits</b>	<b>12,596.5</b>	<b>12,146.6</b>	<b>12,054.4</b>	<b>12,108.2</b>	<b>12,319.1</b>	<b>12,194.6</b>
Other Deposits (MA)	290.1	287.8	312.7	272.2	278.5	308.7
Time and Savings Deposits (CoB)	12,306.4	11,858.8	11,741.7	11,836.0	12,040.7	11,885.9
<b>Bonds and Securities (CoB)</b>	<b>0.0</b>	<b>0.0</b>	<b>0.0</b>	<b>0.0</b>	<b>0.0</b>	<b>0.0</b>
<b>Restricted Deposits</b>	<b>48.1</b>	<b>47.6</b>	<b>47.6</b>	<b>46.8</b>	<b>46.3</b>	<b>45.7</b>
<b>Capital Accounts</b>	<b>27,494.5</b>	<b>27,565.8</b>	<b>27,581.9</b>	<b>27,497.6</b>	<b>28,788.6</b>	<b>27,975.4</b>
Capital Accounts (MA)	16,963.1	16,980.5	17,016.6	16,830.4	17,729.4	16,961.8
Capital Accounts (CoB)	10,531.4	10,585.3	10,565.3	10,667.2	11,059.2	11,013.7
<b>Other Items (net)</b>	<b>(9,405.2)</b>	<b>(7,885.0)</b>	<b>(4,307.3)</b>	<b>(8,621.5)</b>	<b>(9,092.8)</b>	<b>(8,804.9)</b>
Unclassified Liabilities (MA)	11,691.6	11,616.3	11,746.8	11,606.6	12,470.9	12,342.4
(-) Unclassified Assets (MA)	16,406.4	16,567.4	16,621.0	16,628.8	17,044.4	17,239.2
(-) Unclassified Assets (CoB)	9,981.7	8,656.5	8,115.3	8,145.4	7,704.9	10,083.3
Unclassified Liabilities (CoB)	6,994.8	7,199.6	9,612.7	6,084.3	5,491.1	8,222.4
Commercial Banks' Deposits (MA)	12,318.1	12,309.0	12,267.6	12,372.1	13,617.6	13,125.4
(-) Reserves (CoB)	13,831.1	13,768.5	13,110.9	14,075.8	15,920.3	15,185.5
Currency Holdings (CoB)	987.3	1,171.8	1,245.3	1,446.0	1,275.7	1,395.5
Liabilities to Central Bank (CoB)	110.3	109.5	111.0	111.0	220.2	216.5
(-) Claims on Domestic Banks (MA)	652.3	661.3	824.3	732.1	820.8	955.5
(-) Claims on Central Bank of Liberia (CoB)	919.3	919.3	925.5	925.5	950.2	931.7
(-) Unbalanced Items	283.6	281.7	306.3	266.0	272.3	288.2
<b>Vertical Check</b>	<b>(0.0)</b>	<b>0.0</b>	<b>(0.0)</b>	<b>(0.0)</b>	<b>(0.0)</b>	<b>(0.0)</b>

NBFIs: Non-Bank Financial Institutions

Source: Central Bank of Liberia, Monrovia, Liberia.

**MONEY AND BANKING**

CENTRAL BANK OF LIBERIA

**1.1c: Depository Corporations Survey - 2012 (contd.)**

Millions of Liberian Dollars

	Jul-12	Aug-12	Sep-12	Oct-12	Nov-12	Dec-12	Jan-13	Feb-13
<b>Foreign Assets (net)</b>	<b>23,371.7</b>	<b>23,719.6</b>	<b>24,190.0</b>	<b>23,053.6</b>	<b>22,654.3</b>	<b>25,418.7</b>	<b>25,361.0</b>	<b>26,202.3</b>
Foreign Assets (MA)	36,420.3	34,847.2	35,033.7	34,684.6	34,432.8	36,106.9	36,999.9	36,216.2
(-) Foreign Liabilities (MA)	21,103.9	19,961.0	20,121.3	19,964.1	19,963.6	19,963.6	20,514.6	20,518.5
Foreign Assets (CoB)	10,525.0	11,313.1	11,668.8	11,017.6	10,874.7	11,673.0	11,216.3	12,956.8
(-) Foreign Liabilities (CoB)	2,469.7	2,479.7	2,391.3	2,684.5	2,689.6	2,397.6	2,340.6	2,452.2
<b>Domestic Credit</b>	<b>36,352.0</b>	<b>33,528.9</b>	<b>37,800.6</b>	<b>36,811.5</b>	<b>39,264.9</b>	<b>37,765.2</b>	<b>38,451.1</b>	<b>38,889.3</b>
Claims on General Government (net)	14,990.0	11,842.7	15,296.0	14,981.6	17,242.7	15,577.7	14,892.9	15,568.1
Claims on General Government (MA)	20,695.8	20,696.2	20,561.6	20,427.1	20,427.6	19,872.2	20,407.9	20,400.5
(-) General Government Deposits (MA)	4,818.6	4,462.1	4,237.9	4,347.1	2,352.5	3,494.8	4,633.9	3,888.8
Claims on General Government (CoB)	402.4	402.4	405.2	391.5	380.7	433.5	445.5	431.3
(-) General Government Deposits (CoB)	1,289.6	4,793.8	1,432.9	1,489.9	1,213.0	1,233.3	1,326.5	1,374.9
Claims on Public Corporations (MA)	0.0	0.0	0.0	0.0	0.0	0.0	0.0	0.0
Claims on Public Corporations (CoB)	1,484.5	1,503.2	1,538.7	1,572.8	1,565.9	1,614.4	1,694.5	2,125.2
Claims on Private Sector (MA)	96.3	102.6	101.3	115.4	123.1	137.5	137.7	143.2
Claims on Private Sector (CoB)	19,575.9	19,936.1	20,699.5	19,984.9	20,176.0	20,277.4	21,676.7	20,942.1
Claims on NBFIs (MA)	0.0	0.0	0.0	0.0	0.0	0.0	0.0	0.0
Claims on NBFIs (CoB)	205.4	144.3	165.1	156.7	157.3	158.2	49.3	110.8
<b>Money</b>	<b>40,524.5</b>	<b>41,166.0</b>	<b>42,785.7</b>	<b>41,691.2</b>	<b>42,575.7</b>	<b>45,029.1</b>	<b>44,399.7</b>	<b>45,997.8</b>
Currency Outside Banks (MA)	5,493.7	5,302.2	5,364.1	5,633.4	6,422.2	7,291.3	6,482.6	6,490.7
Liberian Currency in Circulation (MA)	7,069.7	6,929.6	6,939.8	7,104.7	7,556.5	8,614.2	8,298.0	8,248.4
(-) Currency Holdings (CoB)	1,576.1	1,627.4	1,575.7	1,471.3	1,134.3	1,322.9	1,815.3	1,757.7
<b>Demand Deposits</b>	<b>23,005.9</b>	<b>22,480.5</b>	<b>23,620.6</b>	<b>22,097.8</b>	<b>22,383.0</b>	<b>23,188.1</b>	<b>24,216.3</b>	<b>24,533.5</b>
Demand Deposits (MA)	219.7	259.5	269.3	284.9	317.8	346.7	381.4	439.3
Demand Deposits (CoB)	22,786.2	22,221.0	23,351.3	21,812.9	22,065.2	22,841.4	23,834.9	24,094.2
<b>Other Deposits</b>	<b>12,025.0</b>	<b>13,383.3</b>	<b>13,801.0</b>	<b>13,960.0</b>	<b>13,770.5</b>	<b>14,549.7</b>	<b>13,700.8</b>	<b>14,973.6</b>
Other Deposits (MA)	164.5	63.4	154.2	41.9	(48.0)	1,276.5	261.2	567.1
Time and Savings Deposits (CoB)	11,860.5	13,320.0	13,646.8	13,918.1	13,818.5	13,273.2	13,439.6	14,406.5
<b>Bonds and Securities (CoB)</b>	<b>0.0</b>	<b>0.0</b>	<b>0.0</b>	<b>0.0</b>	<b>0.0</b>	<b>0.0</b>	<b>0.0</b>	<b>0.0</b>
<b>Restricted Deposits</b>	<b>45.3</b>	<b>44.5</b>	<b>43.7</b>	<b>43.7</b>	<b>43.7</b>	<b>43.7</b>	<b>43.7</b>	<b>43.7</b>
<b>Capital Accounts</b>	<b>27,361.7</b>	<b>27,169.6</b>	<b>27,385.6</b>	<b>27,350.9</b>	<b>28,101.9</b>	<b>26,849.7</b>	<b>27,856.3</b>	<b>27,637.9</b>
Capital Accounts (MA)	16,478.9	16,390.3	16,269.8	16,251.2	16,208.7	15,741.4	16,315.5	16,112.7
Capital Accounts (CoB)	10,882.8	10,779.3	11,115.8	11,099.7	11,893.2	11,108.3	11,540.8	11,525.2
<b>Other Items (net)</b>	<b>(8,043.2)</b>	<b>(11,068.2)</b>	<b>(8,070.2)</b>	<b>(9,178.8)</b>	<b>(8,850.0)</b>	<b>(7,462.0)</b>	<b>(8,226.4)</b>	<b>(8,020.7)</b>
Unclassified Liabilities (MA)	12,177.9	11,650.9	11,747.3	11,521.0	12,463.6	12,449.9	12,862.5	12,776.2
(-) Unclassified Assets (MA)	17,145.1	16,414.1	16,577.8	16,573.7	16,529.9	16,556.1	16,871.8	16,872.6
(-) Unclassified Assets (CoB)	9,738.7	9,335.1	9,395.0	9,409.2	8,173.4	6,887.9	7,696.8	8,133.0
Unclassified Liabilities (CoB)	8,457.6	4,743.7	7,989.3	6,787.5	5,487.2	4,658.4	5,353.4	5,962.0
Commercial Banks' Deposits (MA)	12,971.5	13,053.6	13,224.8	12,978.6	14,111.8	12,761.0	13,552.7	13,434.9
(-) Reserves (CoB)	15,132.4	15,021.9	15,362.3	14,573.7	15,519.0	14,568.2	15,377.1	15,121.8
Currency Holdings (CoB)	1,576.1	1,627.4	1,575.7	1,471.3	1,134.3	1,322.9	1,815.3	1,757.7
Liabilities to Central Bank (CoB)	210.7	212.2	195.4	196.0	562.2	982.4	1,227.1	912.7
(-) Claims on Domestic Banks (MA)	649.8	714.1	693.4	696.9	1,416.6	1,942.4	2,370.0	2,327.2
(-) Claims on Central Bank of Liberia (CoB)	919.3	919.3	913.1	907.0	907.0	907.0	931.7	931.7
(-) Unbalanced Items	148.5	48.4	138.8	27.3	(63.3)	1,224.8	209.9	522.1
<b>Vertical Check</b>	<b>(0.0)</b>	<b>(0.0)</b>	<b>(0.0)</b>	<b>(0.0)</b>	<b>(0.0)</b>	<b>(0.0)</b>	<b>(0.0)</b>	<b>(0.0)</b>

NBFIs: Non-Bank Financial Institutions

Source: Central Bank of Liberia, Monrovia, Liberia.



**MONEY AND BANKING**

CENTRAL BANK OF LIBERIA

**1.2b: Sectoral Balance Sheet of Other Depository Corporations - 2011**

*Thousands of Liberian Dollars*

	Jan-11	Feb-11	Mar-11	Apr-11	May-11	Jun-11
<b>Assets</b>						
Reserves	9,062,971	9,550,168	9,703,791	10,069,503	10,878,778	11,989,158
<i>of which: Cash on Hand: Coins/LD Notes</i>	880,544	944,753	878,989	844,650	925,569	722,668
Foreign Assets	9,699,204	9,719,014	9,894,163	10,510,723	11,157,492	9,418,032
Claims on General Government	467,629	455,179	453,604	456,754	445,868	448,943
Claims on Public Corporations	920,094	845,350	886,256	860,792	853,552	892,970
Claims on Private Sector	13,744,667	14,189,133	14,365,887	14,808,125	15,007,944	14,990,876
Claims on Central Bank of Liberia	894,181	903,444	900,355	906,533	906,533	906,533
Claims on NBFIs	69,930	53,184	72,219	92,601	108,889	137,074
Unclassified Assets	6,266,966	6,072,065	6,240,852	6,626,870	6,379,001	6,490,429
<b>Total Assets</b>	<b>41,125,641</b>	<b>41,787,536</b>	<b>42,517,127</b>	<b>44,331,901</b>	<b>45,738,058</b>	<b>45,274,015</b>
	Jan-11	Feb-11	Mar-11	Apr-11	May-11	Jun-11
<b>Liabilities</b>						
Demand Deposits	17,873,259	17,484,231	17,768,882	18,479,321	19,950,355.38	19,652,319.21
Time and Savings Deposits	7,940,847	8,569,758	8,956,965	9,233,199	9,454,912.80	9,923,518.95
Restricted Deposits	34,412	34,412	34,011	34,011	34,011	34,011
Bonds and Securities	0	0	0	0	0	0
Foreign Liabilities	1,061,444	1,249,368	1,281,198	1,408,623	1,395,941	1,386,014
Government Deposits	659,629	669,578	803,022	919,812	945,934	1,017,293
Liabilities to Central Bank of Liberia	108,750	108,375	108,000	108,750	108,750	109,500
Capital Accounts	9,222,734	9,760,904	9,560,758	9,649,546	9,601,369	9,148,945
Unclassified Liabilities	4,224,566	3,911,311	4,004,290	4,498,639	4,246,785	4,002,413
<b>Total Liabilities</b>	<b>41,125,641</b>	<b>41,787,536</b>	<b>42,517,127</b>	<b>44,331,901</b>	<b>45,738,058</b>	<b>45,274,015</b>
<b>Vertical Check (Assets/Liabilities)</b>	<b>0</b>	<b>0</b>	<b>0</b>	<b>0</b>	<b>0</b>	<b>0</b>

*NBFIs: Non-Bank Financial Institutions*

*Source : Central Bank of Liberia, Monrovia, Liberia.*

MONEY AND BANKING

CENTRAL BANK OF LIBERIA

**1.2b: Sectoral Balance Sheet of Other Depository Corporations - 2011- Continued- 2012**

*Thousands of Liberian Dollars*

	Jul-11	Aug-11	Sep-11	Oct-11	Nov-11	Dec-11
<b>Assets</b>						
Reserves	11,757,383	12,323,153	12,215,703	12,095,888	12,536,166	12,780,443
<i>of which: Cash on Hand: Coins/LD Notes</i>	589,080	669,717	586,191	494,536	512,400	547,305
Foreign Assets	10,379,895	10,012,656	10,200,699	9,146,767	8,521,327	10,723,187
Claims on General Government	445,868	445,868	500,348	442,818	439,743	424,154
Claims on Public Corporations	780,927	958,317	1,080,184	719,280	692,313	719,226
Claims on Private Sector	14,977,487	15,542,879	15,880,600	16,985,835	17,289,277	17,934,205
Claims on Central Bank of Liberia	906,533	905,956	899,777	899,777	893,598	905,956
Claims on NBFIs	134,987	145,432	101,875	116,122	91,821	100,355
Unclassified Assets	6,400,898	6,843,227	8,890,325	10,885,251	10,999,307	8,824,880
<b>Total Assets</b>	<b>45,783,979</b>	<b>47,177,489</b>	<b>49,769,512</b>	<b>51,291,738</b>	<b>51,463,552</b>	<b>52,412,405</b>
	Jul-11	Aug-11	Sep-11	Oct-11	Nov-11	Dec-11
<b>Liabilities</b>						
Demand Deposits	19,904,640.35	20,652,821.98	22,439,299.53	22,759,475.57	22,126,282	23,364,708
Time and Savings Deposits	10,094,496.04	10,203,973.70	11,022,975.98	11,483,680.58	11,559,461	11,355,848
Restricted Deposits	34,011	32,900	32,900	35,330	35,330	35,330
Bonds and Securities	0	0	0	0	0	0
Foreign Liabilities	1,193,357	1,208,337	707,665	784,004	820,686	1,039,036
Government Deposits	953,032	838,572	798,687	863,046	903,591	1,016,679
Liabilities to Central Bank of Liberia	108,750	108,750	108,000	108,000	107,250	108,750
Capital Accounts	9,243,710	9,957,570	9,991,132	10,021,097	10,008,405	10,181,041
Unclassified Liabilities	4,251,983	4,174,563	4,668,853	5,237,104	5,902,547	5,311,013
<b>Total Liabilities</b>	<b>45,783,979</b>	<b>47,177,489</b>	<b>49,769,512</b>	<b>51,291,738</b>	<b>51,463,552</b>	<b>52,412,405</b>
<b>Vertical Check (Assets/Liabilities)</b>	<b>0</b>	<b>0</b>	<b>0</b>	<b>0</b>	<b>0</b>	<b>0</b>

*NBFIs: Non-Bank Financial Institutions*

*Source : Central Bank of Liberia, Monrovia, Liberia.*

MONEY AND BANKING

CENTRAL BANK OF LIBERIA

**1.2c: Sectoral Balance Sheet of Other Depository Corporations - 2012**  
*Thousands of Liberian Dollars*

	Jan-12	Feb-12	Mar-12	Apr-12	May-12	Jun-12
<b>Assets</b>						
Reserves	13,831,055	13,768,512	13,110,949	14,075,764	15,920,324	15,185,457
<i>of which: Cash on Hand: Coins/LD Notes</i>	987,278	1,171,834	1,245,335	1,445,990	1,275,685	1,395,454
Foreign Assets	10,404,765	11,847,634	12,626,193	10,353,460	10,043,327	11,609,922
Claims on General Government	430,004	416,127	421,824	421,824	421,825	413,501
Claims on Public Corporations	1,053,907	1,187,481	1,279,289	1,264,635	1,354,950	1,456,990
Claims on Private Sector	18,238,439	18,660,574	18,946,865	19,203,253	20,353,837	19,484,480
Claims on Central Bank of Liberia	919,321	919,321	925,500	925,500	950,214	931,678
Claims on NBFIs	87,825	85,813	114,747	114,525	108,947	113,028
Unclassified Assets	9,981,734	8,656,472	8,115,333	8,145,362	7,704,897	10,083,288
<b>Total Assets</b>	<b>54,947,049</b>	<b>55,541,933</b>	<b>55,540,699</b>	<b>54,504,320</b>	<b>56,858,321</b>	<b>59,278,344</b>
	Jan-12	Feb-12	Mar-12	Apr-12	May-12	Jun-12
<b>Liabilities</b>						
Demand Deposits	23,174,293	22,112,732	19,475,654	22,026,608	24,222,299	24,096,153
Time and Savings Deposits	12,306,365	11,858,751	11,741,653	11,835,954	12,040,651	11,885,860
Restricted Deposits	29,290	28,847	28,817	28,028	27,564	26,906
Bonds and Securities	0	0	0	0	0	0
Foreign Liabilities	761,966	2,592,737	2,880,560	2,631,190	2,590,570	2,494,737
Government Deposits	1,038,625	1,054,502	1,124,998	1,120,003	1,206,730	1,322,119
Liabilities to Central Bank of Liberia	110,250	109,500	111,000	111,000	220,154	216,512
Capital Accounts	10,531,420	10,585,266	10,565,305	10,667,231	11,059,206	11,013,681
Unclassified Liabilities	6,994,839	7,199,598	9,612,712	6,084,307	5,491,148	8,222,377
<b>Total Liabilities</b>	<b>54,947,049</b>	<b>55,541,933</b>	<b>55,540,699</b>	<b>54,504,320</b>	<b>56,858,321</b>	<b>59,278,344</b>
<b>Vertical Check (Assets/Liabilities)</b>	<b>0</b>	<b>0</b>	<b>0</b>	<b>0</b>	<b>0</b>	<b>0</b>

NBFIs: Non-Bank Financial Institutions

Source : Central Bank of Liberia, Monrovia, Liberia.

MONEY AND BANKING

CENTRAL BANK OF LIBERIA

**1.2c: Sectoral Balance Sheet of Other Depository Corporations - 2012 (contd.)**

*Thousands of Liberian Dollars*

	Jul-12	Aug-12	Sep-12	Oct-12	Nov-12	Dec-12	Jan-13	Feb-13
<b>Assets</b>								
Reserves	15,132,416	15,021,916	15,362,288	14,573,670.08	15,519,005	14,568,153.15	15,377,126	15,121,803.75
<i>of which: Cash on Hand: Coins/LD Notes</i>	1,576,057	1,627,401	1,575,709	1,471,275	1,134,297	1,322,873	1,815,339	1,757,652
Foreign Assets	10,525,035	11,313,088	11,668,822	11,017,551	10,874,673	11,672,979	11,216,279	12,956,757
Claims on General Government	402,400	402,401	405,177	391,528	380,652	433,549	445,507	431,313
Claims on Public Corporations	1,484,517	1,503,178	1,538,676	1,572,843	1,565,902	1,614,450	1,694,500	2,125,180
Claims on Private Sector	19,575,871	19,936,134	20,699,472	19,984,863	20,176,029	20,277,420	21,676,739	20,942,096
Claims on Central Bank of Liberia	919,321	919,321	913,142	906,964	906,964	906,964	931,678	931,678
Claims on NBFIs	205,387	144,348	165,095	156,719	157,277	158,161	49,260	110,823
Unclassified Assets	9,738,715	9,335,069	9,395,002	9,409,243	8,173,371	6,887,880	7,696,752	8,133,022
<b>Total Assets</b>	<b>57,983,662</b>	<b>58,575,455</b>	<b>60,147,674</b>	<b>58,013,381</b>	<b>57,753,873</b>	<b>56,519,555</b>	<b>59,087,842</b>	<b>60,752,672</b>
	Jul-12	Aug-12	Sep-12	Oct-12	Nov-12	Dec-12	Jan-13	Feb-13
<b>Liabilities</b>								
Demand Deposits	22,786,193	22,221,006	23,351,284	21,812,911	22,065,202	22,841,372	23,834,929	24,094,236
Time and Savings Deposits	11,860,501	13,319,971	13,646,814	13,918,081	13,818,491	13,273,224	13,439,611	14,406,542
Restricted Deposits	26,494	25,695	24,896	24,896	24,896	24,896	24,896	24,896
Bonds and Securities	0	0	0	0	0	0	0	0
Foreign Liabilities	2,469,716	2,479,710	2,391,301	2,684,487	2,689,593	2,397,612	2,340,600	2,452,179
Government Deposits	1,289,620	4,793,803	1,432,867	1,489,873	1,213,035	1,233,316	1,326,536	1,374,924
Liabilities to Central Bank of Liberia	210,743	212,230	195,442	196,004	562,173	982,422	1,227,074	912,731
Capital Accounts	10,882,784	10,779,301	11,115,771	11,099,672	11,893,234	11,108,330	11,540,798	11,525,174
Unclassified Liabilities	8,457,612	4,743,740	7,989,299	6,787,455	5,487,247	4,658,383	5,353,397	5,961,989
<b>Total Liabilities</b>	<b>57,983,662</b>	<b>58,575,455</b>	<b>60,147,674</b>	<b>58,013,381</b>	<b>57,753,873</b>	<b>56,519,555</b>	<b>59,087,842</b>	<b>60,752,672</b>
<b>Vertical Check (Assets/Liabilities)</b>	<b>0</b>	<b>0</b>	<b>0</b>	<b>0</b>	<b>0</b>	<b>0</b>	<b>0</b>	<b>0</b>

*NBFIs: Non-Bank Financial Institutions*

*Source : Central Bank of Liberia, Monrovia, Liberia.*

**MONEY AND BANKING**

CENTRAL BANK OF LIBERIA

**1.3b: Sectoral Balance Sheet of Central Bank of Liberia - 2011**

*Thousands of Liberian Dollars*

	Jan-11	Feb-11	Mar-11	Apr-11	May-11	Jun-11
<b>Assets</b>						
Foreign Assets	34,090,999	33,391,377	33,806,417	34,455,851	36,120,242	35,660,715
Claims on General Government	18,969,588	18,907,536	18,845,285	18,969,384	18,968,683	19,094,182
Claims on Public Corporations	0	0	0	0	0	0
Claims on Private Sector	362,532	363,837	353,185	356,980	357,078	359,815
Claims on Domestic Banks	607,717	647,325	867,250	585,994	625,617	642,989
Claims on NBFIs	0	0	0	0	0	0
Unclassified Assets	15,027,582	15,077,369	15,154,384	15,764,387	15,583,000	15,665,474
<b>Total Assets</b>	<b>69,058,418</b>	<b>68,387,444</b>	<b>69,026,521</b>	<b>70,132,597</b>	<b>71,654,620</b>	<b>71,423,175</b>
	Jan-11	Feb-11	Mar-11	Apr-11	May-11	Jun-11
<b>Liabilities</b>						
Reserve Money	14,363,567	14,684,978	15,338,149	15,697,202	16,866,437	17,668,127
Other Deposits	0	0	0	0	0	0
Restricted Reserves	18,781	18,781	18,781	18,781	18,781	18,781
Foreign Liabilities	20,253,764	20,321,309	20,404,416	20,986,103	20,735,580	20,800,472
Liabilities to General Government	7,214,669	6,208,661	6,035,886	5,731,876	6,709,456	5,390,367
Capital Accounts	17,694,579	17,550,510	17,412,480	17,792,423	17,466,900	17,677,027
Unclassified Liabilities	9,513,058	9,603,204	9,816,809	9,906,212	9,857,466	9,868,401
<b>Total Liabilities</b>	<b>69,058,418</b>	<b>68,387,444</b>	<b>69,026,521</b>	<b>70,132,597</b>	<b>71,654,620</b>	<b>71,423,175</b>
<b>Vertical Check (Assets/Liabilities)</b>	<b>0</b>	<b>0</b>	<b>0</b>	<b>0</b>	<b>0</b>	<b>0</b>

*NBFIs: Non-Bank Financial Institutions*

*Source : Central Bank of Liberia, Monrovia, Liberia.*

**MONEY AND BANKING**

CENTRAL BANK OF LIBERIA

**1.3b: Sectoral Balance Sheet of Central Bank of Liberia - 2011- Continued**

*Thousands of Liberian Dollars*

	<b>Jul-11</b>	<b>Aug-11</b>	<b>Sep-11</b>	<b>Oct-11</b>	<b>Nov-11</b>	<b>Dec-11</b>
<b>Assets</b>						
Foreign Assets	35,704,476	36,292,165	35,876,040	35,589,415	35,391,833	37,963,032
Claims on General Government	18,969,705	18,969,271	18,845,357	18,852,285	18,727,666	18,976,710
Claims on Public Corporations	0	0	0	0	0	0
Claims on Private Sector	357,683	361,357	360,206	346,400	214,033	421,552
Claims on Domestic Banks	646,978	701,859	689,713	653,013	675,362	930,600
Claims on NBFIs	0	0	0	0	0	0
Unclassified Assets	15,579,258	15,676,525	16,100,947	16,084,177	16,041,755	16,216,701
<b>Total Assets</b>	<b>71,258,100</b>	<b>72,001,178</b>	<b>71,872,264</b>	<b>71,525,290</b>	<b>71,050,647</b>	<b>74,508,595</b>
	<b>Jul-11</b>	<b>Aug-11</b>	<b>Sep-11</b>	<b>Oct-11</b>	<b>Nov-11</b>	<b>Dec-11</b>
<b>Liabilities</b>						
Reserve Money	17,702,527	17,461,963	19,004,123	18,572,058	19,513,076	22,370,194
Other Deposits	0	0	0	0	0	0
Restricted Reserves	18,781	18,781	18,781	18,781	18,781	18,781
Foreign Liabilities	20,681,580	20,807,811	20,664,063	20,664,283	20,545,670	20,832,726
Liabilities to General Government	4,526,263	5,371,718	4,134,950	4,278,534	3,299,061	3,100,881
Capital Accounts	17,546,639	17,489,523	17,260,920	17,170,808	17,102,049	16,732,551
Unclassified Liabilities	10,782,309	10,851,383	10,789,427	10,820,826	10,572,010	11,453,462
<b>Total Liabilities</b>	<b>71,258,100</b>	<b>72,001,178</b>	<b>71,872,264</b>	<b>71,525,290</b>	<b>71,050,647</b>	<b>74,508,595</b>
<b>Vertical Check (Assets/Liabilities)</b>	<b>0</b>	<b>0</b>	<b>0</b>	<b>0</b>	<b>0</b>	<b>0</b>

*NBFIs: Non-Bank Financial Institutions*

*Source : Central Bank of Liberia, Monrovia, Liberia.*

**MONEY AND BANKING**

CENTRAL BANK OF LIBERIA

**1.3c: Sectoral Balance Sheet of Central Bank of Liberia -2012 (contd.)**

*Thousands of Liberian Dollars*

	Jan-12	Feb-12	Mar-12	Apr-12	May-12	Jun-12
<b>Assets</b>						
Foreign Assets	38,999,997	38,195,091	38,970,809	39,755,203	39,613,226	37,821,837
Claims on General Government	19,225,445	19,226,073	19,350,280	19,350,329	19,848,388	20,964,717
Claims on Public Corporations	0	0	0	0	0	0
Claims on Private Sector	426,010	341,510	345,106	347,260	361,194	354,938
Claims on Domestic Banks	652,344	661,263	824,255	732,115	820,777	955,528
Claims on NBFIs	0	0	0	0	0	0
Unclassified Assets	16,406,446	16,567,422	16,620,978	16,628,780	17,044,412	17,239,208
<b>Total Assets</b>	<b>75,710,242</b>	<b>74,991,360</b>	<b>76,111,428</b>	<b>76,813,687</b>	<b>77,687,997</b>	<b>77,336,229</b>
	Jan-12	Feb-12	Mar-12	Apr-12	May-12	Jun-12
<b>Liabilities</b>						
Reserve Money	20,999,141	21,173,157	21,264,951	21,359,720	21,530,525	20,942,566
Other Deposits	0	0	0	0	0	0
Restricted Reserves	18,781	18,781	18,781	18,781	18,781	18,781
Foreign Liabilities	21,103,925	21,104,047	21,247,448	21,261,937	21,821,960	21,391,007
Liabilities to General Government	4,933,712	4,098,504	4,816,803	5,736,334	4,116,452	5,679,670
Capital Accounts	16,963,083	16,980,537	17,016,628	16,830,355	17,729,389	16,961,766
Unclassified Liabilities	11,691,600	11,616,333	11,746,817	11,606,561	12,470,890	12,342,439
<b>Total Liabilities</b>	<b>75,710,242</b>	<b>74,991,360</b>	<b>76,111,428</b>	<b>76,813,687</b>	<b>77,687,997</b>	<b>77,336,229</b>
<b>Vertical Check (Assets/Liabilities)</b>	<b>0</b>	<b>0</b>	<b>0</b>	<b>0</b>	<b>0</b>	<b>0</b>

*NBFIs: Non-Bank Financial Institutions*

*Source : Central Bank of Liberia, Monrovia, Liberia.*

**MONEY AND BANKING**

CENTRAL BANK OF LIBERIA

**1.3c: Sectoral Balance Sheet of Central Bank of Liberia -2012 (contd.)**

*Thousands of Liberian Dollars*

	Jul-12	Aug-12	Sep-12	Oct-12	Nov-12	Dec-12	Jan-13	Feb-13
<b>Assets</b>								
Foreign Assets	36,420,307	34,847,168	35,033,705	34,684,618	34,432,770	36,106,926	36,999,856	36,216,198
Claims on General Government	20,695,832	20,696,228	20,561,629	20,427,102	20,427,552	19,872,212	20,407,865	20,400,477
Claims on Public Corporations	0	0	0	0	0	0	0	0
Claims on Private Sector	96,271	102,553	101,325	115,387	123,054	137,521	137,722	143,157
Claims on Domestic Banks	649,849	714,114	693,364	696,886	1,416,609	1,942,419	2,369,965	2,327,231
Claims on NBFIs	0	0	0	0	0	0	0	0
Unclassified Assets	17,145,150	16,414,117	16,577,768	16,573,745	16,529,871	16,556,086	16,871,829	16,872,587
<b>Total Assets</b>	<b>75,007,409</b>	<b>72,774,180</b>	<b>72,967,791</b>	<b>72,497,738</b>	<b>72,929,857</b>	<b>74,615,164</b>	<b>76,787,237</b>	<b>75,959,650</b>
	Jul-12	Aug-12	Sep-12	Oct-12	Nov-12	Dec-12	Jan-13	Feb-13
<b>Liabilities</b>								
Reserve Money	20,409,330	20,291,131	20,572,698	20,395,531	21,922,732	22,946,722	22,441,991.41	22,644,700.02
Other Deposits	0	0	0	0	0	0	0	0
Restricted Reserves	18,781	18,781	18,781	18,781	18,781	18,781	18,781.00	18,781.00
Foreign Liabilities	21,103,883	19,960,970	20,121,252	19,964,080	19,963,576	19,963,576	20,514,583.88	20,518,459.95
Liabilities to General Government	4,818,629	4,462,094	4,237,947	4,347,109	2,352,494	3,494,790	4,633,909.53	3,888,779.58
Capital Accounts	16,478,874	16,390,288	16,269,793	16,251,226	16,208,659	15,741,350	16,315,482.73	16,112,699.41
Unclassified Liabilities	12,177,912	11,650,916	11,747,321	11,521,010	12,463,615	12,449,944	12,862,488.46	12,776,229.80
<b>Total Liabilities</b>	<b>75,007,409</b>	<b>72,774,180</b>	<b>72,967,791</b>	<b>72,497,738</b>	<b>72,929,857</b>	<b>74,615,164</b>	<b>76,787,237.03</b>	<b>75,959,649.76</b>
<b>Vertical Check (Assets/Liabilities)</b>	<b>0</b>	<b>0</b>	<b>0</b>	<b>0</b>	<b>0</b>	<b>0</b>	<b>0</b>	<b>0</b>

*NBFIs: Non-Bank Financial Institutions*

*Source : Central Bank of Liberia, Monrovia, Liberia.*



## MONEY AND BANKING

CENTRAL BANK OF LIBERIA

**1.4b: Commercial Banks' Loans By Economic Sector - 2011**

Thousands of Liberian Dollars

Sector	Jan-11		Feb-11		Mar-11		Apr-11		May-11		Jun-11	
	L\$	%	L\$	%	L\$	%	L\$	%	L\$	%	L\$	%
<b>1. Agriculture</b>	<b>463,032</b>	<b>3.5</b>	<b>515,489</b>	<b>3.8</b>	<b>547,500</b>	<b>4.0</b>	<b>464,411</b>	<b>3.3</b>	<b>488,592.0</b>	<b>3.4</b>	<b>517,277.0</b>	<b>3.6</b>
1.1 Rubber	123,505	0.9	128,202	0.9	146,961	1.1	118,473	0.8	126,425.0	0.9	98,113.0	0.7
1.2 Forestry	102,476	0.8	116,021	0.9	151,503	1.1	131,393	0.9	127,195.0	0.9	164,424.0	1.1
1.3 Fishery	136,228	1.0	165,525	1.2	128,592	0.9	126,658	0.9	151,742.5	1.1	167,462.0	1.2
1.4 Others	100,824	0.8	105,741	0.8	120,444	0.9	87,889	0.6	83,229.5	0.6	87,278.0	0.6
<b>2. Mining &amp; Quarrying</b>	<b>2,766</b>	<b>0.0</b>	<b>12,944</b>	<b>0.1</b>	<b>53,003</b>	<b>0.4</b>	<b>55,395</b>	<b>0.4</b>	<b>56,265.0</b>	<b>0.4</b>	<b>49,061.0</b>	<b>0.3</b>
2.1 Iron Ore	-	-	-	-	-	-	-	-	-	-	1,173.0	0.0
2.2 Quarrying	2,766	0.0	12,944	0.1	53,003	0.4	55,395	0.4	56,265.0	0.4	47,888.0	0.3
<b>3. Manufacturing</b>	<b>762,040</b>	<b>5.8</b>	<b>186,317</b>	<b>1.4</b>	<b>202,008</b>	<b>1.5</b>	<b>351,600</b>	<b>2.5</b>	<b>352,759.5</b>	<b>2.5</b>	<b>305,190.0</b>	<b>2.1</b>
<b>4. Construction</b>	<b>1,391,797</b>	<b>10.6</b>	<b>1,423,017</b>	<b>10.5</b>	<b>1,540,369</b>	<b>11.2</b>	<b>1,471,530</b>	<b>10.5</b>	<b>1,518,132.0</b>	<b>10.7</b>	<b>1,585,257.0</b>	<b>11.1</b>
4.1 Mortgage Loans	178,278	1.4	202,300	1.5	213,624	1.6	215,108	1.5	214,310.0	1.5	141,985.0	1.0
4.2 Home Improvement	429,328	3.3	421,288	3.1	424,128	3.1	499,503	3.6	497,110.0	3.5	349,723.0	2.4
4.3 Others	784,192	5.9	799,429	5.9	902,617	6.6	756,920	5.4	806,712.0	5.7	1,093,549.0	7.6
<b>5. Trans., Storage &amp; Comm.</b>	<b>3,009,794</b>	<b>22.8</b>	<b>1,960,634</b>	<b>14.5</b>	<b>1,957,403</b>	<b>14.2</b>	<b>1,435,831</b>	<b>10.2</b>	<b>1,396,654.0</b>	<b>9.8</b>	<b>1,457,491.0</b>	<b>10.2</b>
5.1 Transportation	2,157,175	16.4	1,088,765	8.0	1,091,462	7.9	712,772	5.1	715,282.5	5.0	703,656.0	4.9
5.2 Storage	0.0	0.0	0.0	0.0	0.0	0.0	0.0	0.0	-	-	-	-
5.3 Communication	852,619	6.5	871,869	6.4	865,941	6.3	723,059	5.2	681,371.5	4.8	753,835.0	5.3
<b>6. Trade, Hotel &amp; Rest.</b>	<b>4,079,018</b>	<b>30.9</b>	<b>5,196,721</b>	<b>38.3</b>	<b>5,198,610</b>	<b>37.8</b>	<b>5,733,106</b>	<b>40.9</b>	<b>5,880,258.0</b>	<b>41.3</b>	<b>5,679,708.0</b>	<b>39.6</b>
6.1 Diamond trade	14,718	0.1	14,739	0.1	24,552	0.2	19,793	0.1	19,502.5	0.1	20,732.0	0.1
6.2 Other trade	3,747,631	28.4	4,863,513	35.9	4,838,041	35.2	5,301,089	37.8	5,461,219.0	38.4	5,263,696.0	36.7
6.3 Hotels	298,650	2.3	299,498	2.2	315,958	2.3	391,595	2.8	378,617.0	2.7	374,950.0	2.6
6.4 Restaurants	18,020	0.1	18,971	0.1	20,059	0.1	20,630	0.1	20,919.5	0.1	20,330.0	0.1
<b>7. Others</b>	<b>3,479,460</b>	<b>26.4</b>	<b>4,269,326</b>	<b>31.5</b>	<b>4,258,280</b>	<b>31.0</b>	<b>4,513,330</b>	<b>32.2</b>	<b>4,542,854.7</b>	<b>31.9</b>	<b>4,741,943.6</b>	<b>33.1</b>
7.1 Services	1,252,654	9.5	1,020,960	7.5	1,483,391	10.8	1,053,793	7.5	1,038,859.0	7.3	1,066,688.0	7.4
7.2 Personal	1,939,409	14.7	3,012,698	22.2	2,586,914	18.8	3,036,923	21.7	3,087,295.0	21.7	3,254,737.0	22.7
7.3 GOL	92,016	0.7	67,924	0.5	67,693	0.5	68,161	0.5	68,150.0	0.5	68,912.0	0.5
7.4 Central Bank of Liberia	0	0.0	-	0.0	0	0.0	-	0.0	-	-	-	-
7.5 Public Corporations	-	0.0	-	0.0	-	0.0	171,028	1.2	170,955.0	1.2	179,288.0	1.3
7.6 Others	195,381	1.5	167,744	1.2	120,282	0.9	183,426	1.3	177,595.7	1.2	172,318.6	1.2
<b>TOTAL</b>	<b>13,187,905.05</b>	<b>100</b>	<b>13,564,446.09</b>	<b>100</b>	<b>13,757,173.28</b>	<b>100</b>	<b>14,025,201.40</b>	<b>100</b>	<b>14,235,515</b>	<b>100</b>	<b>14,335,928</b>	<b>100.0</b>

Source : Central Bank of Liberia, Monrovia, Liberia.

## MONEY AND BANKING

CENTRAL BANK OF LIBERIA

**1.4b: Commercial Banks' Loans By Economic Sector - 2011- Continued**  
 Thousands of Liberian Dollars

Sector	Jul-11		Aug-11		Sep-11		Oct-11		Nov-11		Dec-11	
	L\$	%	L\$	%	L\$	%	L\$	%	L\$	%	L\$	%
<b>1. Agriculture</b>	<b>527,459.0</b>	<b>3.7</b>	<b>523,661.5</b>	<b>3.6</b>	<b>514,759</b>	<b>3.4</b>	<b>497,098</b>	<b>3.3</b>	<b>488,026</b>	<b>3.2</b>	<b>748,330</b>	<b>4.6</b>
1.1 Rubber	96,905.0	0.7	135,535.0	0.9	97,401	0.7	99,273	0.7	95,023	0.6	132,458	0.8
1.2 Forestry	202,305.0	1.4	134,735.0	0.9	141,152	0.9	166,747	1.1	128,168	0.8	125,826	0.8
1.3 Fishery	152,250.0	1.1	126,802.5	0.9	200,736	1.3	66,456	0.4	112,756	0.7	192,425	1.2
1.4 Others	75,999.0	0.5	126,589.0	0.9	75,470	0.5	164,622	1.1	152,080	1.0	297,622	1.8
<b>2. Mining &amp; Quarrying</b>	<b>54,960.0</b>	<b>0.4</b>	<b>36,037.5</b>	<b>0.2</b>	<b>66,965</b>	<b>0.4</b>	<b>127,445</b>	<b>0.8</b>	<b>144,006</b>	<b>0.9</b>	<b>139,568</b>	<b>0.9</b>
2.1 Iron Ore	5.00	0.00	-	-	-	-	-	-	8,795	0.1	8,990.00	0.10
2.2 Quarrying	54,955.0	0.4	36,037.5	0.2	66,965	0.4	127,445	0.8	135,212	0.9	130,578	0.8
<b>3. Manufacturing</b>	<b>303,389.5</b>	<b>2.1</b>	<b>310,010.0</b>	<b>2.1</b>	<b>259,416</b>	<b>1.7</b>	<b>271,008</b>	<b>1.8</b>	<b>339,911</b>	<b>2.2</b>	<b>324,053</b>	<b>2.0</b>
<b>4. Construction</b>	<b>1,585,843.0</b>	<b>11.2</b>	<b>1,304,518.0</b>	<b>8.8</b>	<b>1,312,594</b>	<b>8.8</b>	<b>1,361,221</b>	<b>8.9</b>	<b>1,365,694</b>	<b>8.9</b>	<b>1,319,039</b>	<b>8.2</b>
4.1 Mortgage Loans	142,100.0	1.0	103,240.0	0.7	96,408	0.6	92,304	0.6	92,521	0.6	98,238	0.6
4.2 Home Improvement	345,440.0	2.4	124,822.5	0.8	99,576	0.7	90,811	0.6	82,144	0.5	81,466	0.5
4.3 Others	1,098,303.0	7.8	1,076,455.5	7.3	1,116,610	7.5	1,178,106	7.7	1,191,029	7.8	1,139,335	7.0
<b>5. Trans., Storage &amp; Comm.</b>	<b>1,769,227.5</b>	<b>12.5</b>	<b>1,359,086.5</b>	<b>9.2</b>	<b>1,322,107</b>	<b>8.8</b>	<b>1,304,508</b>	<b>8.6</b>	<b>1,326,120</b>	<b>8.6</b>	<b>1,351,589</b>	<b>8.4</b>
5.1 Transportation	1,022,968.5	7.2	666,562.5	4.5	654,054	4.4	629,183	4.1	652,034	4.2	676,770	4.2
5.2 Storage	-	-	-	-	-	-	-	-	-	-	-	0.0
5.3 Communication	746,259.0	5.3	692,524.0	4.7	668,053	4.5	675,325	4.4	674,086	4.4	674,819	4.2
<b>6. Trade, Hotel &amp; Rest.</b>	<b>5,104,382.0</b>	<b>36.1</b>	<b>5,651,218.5</b>	<b>38.3</b>	<b>5,918,395</b>	<b>39.6</b>	<b>6,231,715</b>	<b>40.9</b>	<b>6,304,642</b>	<b>41.1</b>	<b>6,662,164</b>	<b>41.2</b>
6.1 Diamond trade	20,952.5	0.1	21,170.0	0.1	22,176	0.1	21,240	0.1	20,664	0.1	3,536,392	21.9
6.2 Other trade	4,687,663.0	33.1	5,281,419.0	35.8	5,559,882	37.2	5,899,914	38.7	5,983,390	39.0	2,802,802	17.3
6.3 Hotels	374,702.0	2.6	327,120.0	2.2	314,928	2.1	289,368	1.9	279,967	1.8	289,238	1.8
6.4 Restaurants	21,064.5	0.1	21,509.5	0.1	21,409	0.1	21,193	0.1	20,623	0.1	33,732	0.2
<b>7. Others</b>	<b>4,808,624.6</b>	<b>34.0</b>	<b>5,560,386.0</b>	<b>37.7</b>	<b>5,554,867</b>	<b>37.2</b>	<b>5,454,419.52</b>	<b>35.8</b>	<b>5,386,001</b>	<b>35.1</b>	<b>5,625,575</b>	<b>34.8</b>
7.1 Services	2,269,755.0	16.0	2,520,389.1	17.1	2,507,723	16.8	2,587,916	17.0	2,510,567	16.4	2,609,549	16
7.2 Personal	2,112,392.5	14.9	2,225,892.5	15.1	2,326,209	15.6	2,277,777	14.9	2,312,271	15.1	2,414,699	14.9
7.3 GOL	68,440.0	0.5	58,580.0	0.4	57,528	0.4	57,528	0.4	57,129	0.4	57,928	0.4
7.4 Central Bank of Liberia	0	0	0	0	0	0	0	0.0	0	0	0	0.0
7.5 Public Corporations	178,060.0	1.3	347,884.0	2.4	346,634	2.3	337,098	2.2	297,083	1.9	322,988	2.0
7.6 Others	179,977.0	1.3	407,640.4	2.8	316,773	2.1	194,101	1.3	208,953	1.4	220,412	1.4
<b>TOTAL</b>	<b>14,153,886</b>	<b>100</b>	<b>14,744,918</b>	<b>100.0</b>	<b>14,949,103</b>	<b>100</b>	<b>15,247,415</b>	<b>100</b>	<b>15,354,399</b>	<b>100</b>	<b>16,170,317</b>	<b>100.0</b>

Source : Central Bank of Liberia, Monrovia, Liberia.

## MONEY AND BANKING

CENTRAL BANK OF LIBERIA

**1.4c: Commercial Banks' Loans By Economic Sector - 2012**

Thousands of Liberian Dollars

Sector	Jan-12		Feb-12		Mar-12		Apr-12		May-12		Jun-12	
	L\$	%	L\$	%	L\$	%	L\$	%	L\$	%	L\$	%
<b>1. Agriculture</b>	<b>703,084</b>	<b>4.4</b>	<b>744,728</b>	<b>4.4</b>	<b>643,111</b>	<b>3.7</b>	<b>766,591</b>	<b>4.4</b>	<b>701,274</b>	<b>3.8</b>	<b>654,066</b>	<b>3.7</b>
1.1 Rubber	134,712	0.8	195,706	1.2	132,439	0.8	139,756	0.8	178,109	1.0	125,122	0.7
1.2 Forestry	130,206	0.8	170,546	1.0	157,637	0.9	149,184	0.9	153,748	0.8	143,264	0.8
1.3 Fishery	155,600	1.0	114,503	0.7	153,990	0.9	154,586	0.9	147,440	0.8	167,700	0.9
1.4 Others	282,567	1.8	263,973	1.6	199,045	1.1	323,065	1.9	221,977	1.2	217,981	1.2
<b>2. Mining &amp; Quarrying</b>	<b>143,036</b>	<b>0.9</b>	<b>152,575</b>	<b>0.9</b>	<b>231,625</b>	<b>1.3</b>	<b>124,399</b>	<b>0.7</b>	<b>104,125</b>	<b>0.6</b>	<b>118,833</b>	<b>0.7</b>
2.1 Iron Ore	9,188	0.1	9,271.00	0.06	86,358	0.5	3,922.00	0.0	3,876	0.0	3,800	0.0
2.2 Quarrying	133,849	0.8	143,304	0.9	145,267	0.8	120,477	0.7	100,249	0.5	115,033	0.6
<b>3. Manufacturing</b>	<b>334,137</b>	<b>2.1</b>	<b>344,215</b>	<b>2.0</b>	<b>346,370</b>	<b>2.0</b>	<b>342,302</b>	<b>2.0</b>	<b>458,790</b>	<b>2.5</b>	<b>418,079</b>	<b>2.3</b>
<b>4. Construction</b>	<b>1,309,317</b>	<b>8.2</b>	<b>1,354,973</b>	<b>8.1</b>	<b>1,319,674</b>	<b>7.6</b>	<b>1,204,641</b>	<b>6.9</b>	<b>1,251,743</b>	<b>6.8</b>	<b>1,484,294</b>	<b>8.3</b>
4.1 Mortgage Loans	90,332	0.6	135,780	0.8	129,574	0.7	129,056	0.7	34,276	0.2	218,434	1.2
4.2 Home Improvement	67,410	0.4	61,489	0.4	60,499	0.3	35,816	0.2	120,992	0.7	15,943	0.1
4.3 Others	1,151,576	7.2	1,157,704	6.9	1,129,601	6.5	1,039,769	6.0	1,096,475	6.0	1,249,917	7.0
<b>5. Trans., Storage &amp; Comm.</b>	<b>1,189,061</b>	<b>7.5</b>	<b>1,666,421</b>	<b>9.9</b>	<b>1,747,678</b>	<b>10.0</b>	<b>1,402,254</b>	<b>8.0</b>	<b>1,500,856</b>	<b>8.2</b>	<b>1,347,240</b>	<b>7.5</b>
5.1 Transportation	515,689	3.2	1,141,727	6.8	1,094,819	6.3	786,890	4.5	827,081	4.5	784,198	4.4
5.2 Storage	-	-	-	0.0	-	-	37.00	0.0	-	-	-	-
5.3 Communication	673,372	4.2	524,694	3.1	652,859	3.7	615,327	3.5	673,775	3.7	563,042	3.2
<b>6. Trade, Hotel &amp; Rest.</b>	<b>6,859,903</b>	<b>43.0</b>	<b>7,236,069</b>	<b>43.0</b>	<b>7,452,817</b>	<b>42.7</b>	<b>7,626,558</b>	<b>43.7</b>	<b>7,634,932</b>	<b>41.6</b>	<b>7,691,398</b>	<b>43.1</b>
6.1 Diamond trade	21,683	0.1	22,630	0.1	24,198	0.1	24,938	0.1	3,930,016	21.4	24,734	0.1
6.2 Other trade	6,609,033	41.4	6,926,278	41.2	6,728,004	38.5	7,297,544	41.8	3,405,874	18.6	7,379,021	41.3
6.3 Hotels	205,739	1.3	252,056	1.5	663,116	3.8	267,505	1.5	262,185	1.4	252,916	1.4
6.4 Restaurants	23,449	0.1	35,105	0.2	37,499	0.2	36,571	0.2	36,857	0.2	34,728	0.2
<b>7. Others</b>	<b>5,407,123</b>	<b>33.9</b>	<b>5,315,753</b>	<b>31.6</b>	<b>5,726,158</b>	<b>32.8</b>	<b>5,974,479</b>	<b>34.3</b>	<b>6,690,912</b>	<b>36.5</b>	<b>6,143,449</b>	<b>34.4</b>
7.1 Services	2,454,404	15.4	2,188,195	13	2,250,095	12.9	2,612,394	15	2,301,607	12.5	1,793,111	10.0
7.2 Personal	2,326,243	14.6	2,473,726	14.7	2,612,638	15.0	2,550,893	14.6	2,592,275	14.1	2,614,985	14.6
7.3 GOL	55,206	0.3	55,197	0.3	55,881	0.3	56,179	0.3	57,395	0.3	64,832	0.4
7.4 Central Bank of Liberia	0	0	0	0.0	0	0	0	0.0	-	-	-	-
7.5 Public Corporations	370,955	2.3	373,122	2.2	414,765	2.4	413,828	2.4	275,424	1.5	298,178	1.7
7.6 Others	200,317	1.3	225,513	1.3	392,779	2.2	341,185	2.0	1,464,211	8.0	1,372,344	7.7
<b>TOTAL</b>	<b>15,945,661</b>	<b>100</b>	<b>16,814,734</b>	<b>100</b>	<b>17,467,432</b>	<b>100</b>	<b>17,441,223</b>	<b>100</b>	<b>18,342,632</b>	<b>100</b>	<b>17,857,358</b>	<b>100</b>

Source : Central Bank of Liberia, Monrovia, Liberia.

## MONEY AND BANKING

CENTRAL BANK OF LIBERIA

## 1.4c: Commercial Banks' Loans By Economic Sector - 2012 (contd.)

Thousands of Liberian Dollars

Sector	Jul-12		Aug-12		Sep-12		Oct-12		Nov-12		Dec-12		Jan-13		Feb-13	
	L\$	%	L\$	%	L\$	%	L\$	%	L\$	%	L\$	%	L\$	%	L\$	%
<b>1. Agriculture</b>	<b>516,583</b>	<b>2.9</b>	<b>582,405</b>	<b>3.3</b>	<b>681,743</b>	<b>3.7</b>	<b>804,912</b>	<b>4.3</b>	<b>830,431</b>	<b>4.3</b>	<b>848,755</b>	<b>4.5</b>	<b>1,170,893</b>	<b>5.8</b>	<b>1,184,696</b>	<b>5.8</b>
1.1 Rubber	144,265	0.8	95,232	0.5	131,994	0.7	207,758	1.1	233,495	1.2	126,440	0.7	306,093	1.5	121,631	0.6
1.2 Forestry	87,653	0.5	140,238	0.8	186,661	1.0	202,638	1.1	232,476	1.2	233,813	1.2	202,113	1.0	346,092	1.7
1.3 Fishery	61,263	0.3	136,343	0.8	84,899	0.5	70,760	0.4	49,880	0.3	156,673	0.8	193,626	1.0	171,350	0.8
1.4 Others	223,403	1.3	210,592	1.2	278,189	1.5	323,757	1.7	314,580	1.6	331,830	1.8	469,062	2.3	545,623	2.7
<b>2. Mining &amp; Quarrying</b>	<b>108,393</b>	<b>0.6</b>	<b>114,298</b>	<b>0.7</b>	<b>109,651</b>	<b>0.6</b>	<b>97,880</b>	<b>0.5</b>	<b>1,044,368</b>	<b>5.4</b>	<b>114,928</b>	<b>0.6</b>	<b>154,194</b>	<b>0.8</b>	<b>127,772</b>	<b>0.6</b>
2.1 Iron Ore	145	0.0	3,896	0.0	3,796	0.0	3,843	-	45,313	0.2	3,915	0.0	43,285	0.2	43,760	0.2
2.2 Quarrying	108,248	0.6	110,402	0.6	105,855	0.6	94,038	0.5	999,055	5.2	111,013	0.6	110,909	0.6	84,012	0.4
<b>3. Manufacturing</b>	<b>392,370</b>	<b>2.2</b>	<b>325,393</b>	<b>1.9</b>	<b>340,837</b>	<b>1.8</b>	<b>341,561</b>	<b>1.8</b>	<b>166,548</b>	<b>0.9</b>	<b>279,216</b>	<b>1.5</b>	<b>321,188</b>	<b>1.6</b>	<b>351,431</b>	<b>1.7</b>
<b>4. Construction</b>	<b>1,212,817</b>	<b>6.9</b>	<b>1,479,242</b>	<b>8.5</b>	<b>1,577,276</b>	<b>8.5</b>	<b>1,471,220</b>	<b>7.8</b>	<b>1,341,291</b>	<b>7.0</b>	<b>1,300,479</b>	<b>6.9</b>	<b>1,649,210</b>	<b>8.2</b>	<b>1,807,881</b>	<b>8.8</b>
4.1 Mortgage Loans	162,183	0.9	192,203	1.1	187,172	1.0	131,963	0.7	142,970	0.7	132,095	0.7	32,816	0.2	157,467	0.8
4.2 Home Improvement	6,960	0.0	11,319	0.1	14,746	0.1	15,080	0.1	15,298	0.1	24,288	0.1	133,281	0.7	4,843	0.0
4.3 Others	1,043,675	6.0	1,275,720	7.3	1,375,358	7.5	1,324,177	7.0	1,183,024	6.2	1,144,096	6.1	1,483,114	7.4	1,645,572	8.0
<b>5. Trans., Storage &amp; Comm.</b>	<b>1,321,736</b>	<b>7.5</b>	<b>1,426,725</b>	<b>8.2</b>	<b>1,280,063</b>	<b>6.9</b>	<b>1,331,190</b>	<b>7.1</b>	<b>1,340,466</b>	<b>7.0</b>	<b>1,337,288</b>	<b>7.1</b>	<b>1,334,353</b>	<b>6.7</b>	<b>1,489,084</b>	<b>7.3</b>
5.1 Transportation	694,479	4.0	804,642	4.6	710,825	3.9	768,705	4.1	774,576	4.0	822,656	4.4	848,669	4.2	856,940	4.2
5.2 Storage	0	0.0	-	-	0	0.0	-	-	0	0.0	-	-	-	-	197,359	1.0
5.3 Communication	627,257	3.6	622,083	3.6	569,238	3.1	562,485	3.0	565,890	2.9	514,632	2.7	485,685	2.4	434,786	2.1
<b>6. Trade, Hotel &amp; Rest.</b>	<b>5,476,084</b>	<b>31.3</b>	<b>6,860,175</b>	<b>39.4</b>	<b>7,367,493</b>	<b>39.9</b>	<b>8,057,194</b>	<b>42.7</b>	<b>8,148,479</b>	<b>42.4</b>	<b>8,325,702</b>	<b>44.0</b>	<b>8,664,542</b>	<b>43.3</b>	<b>8,733,869</b>	<b>42.6</b>
6.1 Diamond trade	23,418	0.1	24,255	0.1	25,477	0.1	24,723	0.1	24,723	0.1	40,600	0.2	40,603	0.2	47,905	0.2
6.2 Other trade	5,308,000	30.3	6,608,301	37.9	7,052,632	38.2	7,775,663	41.2	7,849,681	40.8	8,026,887	42.5	8,356,274	41.7	8,387,723	40.9
6.3 Hotels	121,365	0.7	211,357	1.2	262,934	1.4	231,550	1.2	248,673	1.3	231,682	1.2	236,209	1.2	265,903	1.3
6.4 Restaurants	23,301	0.1	16,263	0.1	26,450	0.1	25,259	0.1	25,404	0.1	26,534	0.1	31,457	0.2	32,338	0.2
<b>7. Others</b>	<b>8,494,833</b>	<b>48.5</b>	<b>6,629,852</b>	<b>38.1</b>	<b>7,095,397</b>	<b>38.5</b>	<b>6,756,437</b>	<b>35.8</b>	<b>6,355,254</b>	<b>33.1</b>	<b>6,695,167</b>	<b>35.4</b>	<b>6,727,040</b>	<b>33.6</b>	<b>6,797,496</b>	<b>33.2</b>
7.1 Services	2,709,597	15.5	1,833,875	10.5	2,056,939	11.1	1,926,950	10.2	1,938,530	10.1	1,842,263	9.7	2,241,520	11.2	1,904,575	9.3
7.2 Personal	2,862,531	16.3	2,891,751	16.6	2,927,356	15.9	2,797,386	14.8	2,436,300	12.7	2,839,408	15.0	2,039,423	10.2	2,643,798	12.9
7.3 GOL	54,921	0.3	60,291	0.3	98,793	0.5	64,769	0.3	106,021	0.6	84,275	0.4	77,737	0.4	71,406	0.3
7.4 Central Bank of Liberia	-	-	-	-	-	-	-	-	-	-	-	-	-	-	-	-
7.5 Public Corporations	359,738	2.1	290,138	1.7	289,991	1.6	322,813	1.7	269,137	1.4	310,156	1.6	365,381	1.8	389,551	1.9
7.6 Others	2,508,047	14.3	1,553,797	8.9	1,722,318	9.3	1,644,520	8.7	1,605,266	8.3	1,619,066	8.6	2,002,980	10.0	1,788,166	8.7
<b>TOTAL</b>	<b>17,522,814</b>	<b>100.0</b>	<b>17,418,089</b>	<b>100.0</b>	<b>18,452,460</b>	<b>100.0</b>	<b>18,860,394</b>	<b>100.0</b>	<b>19,226,836</b>	<b>100.0</b>	<b>18,901,533</b>	<b>100.0</b>	<b>20,021,419</b>	<b>100.0</b>	<b>20,492,228</b>	<b>100.0</b>

Source: Central Bank of Liberia, Monrovia, Liberia.

**MONEY AND BANKING**

CENTRAL BANK OF LIBERIA

**1.5: Commercial Banks' Interest Rates: 2011-2013**

	Jan-11	Feb-11	Mar-11	Apr-11	May-11	Jun-11
Average Lending Rate	14.62	13.52	13.39	13.50	13.53	13.64
Average Personal Loan Rate	15.38	15.38	15.17	14.60	10.10	14.68
Average Mortgage Rate	14.00	12.47	12.47	14.66	14.63	15.00
Average Time Deposit Rate	2.90	3.30	2.60	2.50	2.90	2.90
Average Savings Rate	2.01	2.02	2.02	2.01	2.08	2.01
Average Rate on CDs	3.00	3.00	3.00	2.00	3.00	2.50

	Jul-11	Aug-11	Sep-11	Oct-11	Nov-11	Dec-11
Average Lending Rate	13.47	13.80	13.80	14.01	13.88	13.85
Average Personal Loan Rate	10.99	14.52	14.44	10.74	10.83	11.02
Average Mortgage Rate	14.73	14.71	15.00	14.86	14.17	14.03
Average Time Deposit Rate	3.10	3.20	2.70	3.30	3.30	3.70
Average Savings Rate	2.01	2.01	2.01	2.10	2.00	2.02
Average Rate on CDs	2.50	3.00	3.00	3.00	3.00	3.00

	Jan-12	Feb-12	Mar-12	Apr-12	May-12	Jun-12
Average Lending Rate	13.42	13.38	13.26	13.89	12.88	13.42
Average Personal Loan Rate	11.02	14.02	13.90	14.70	14.01	14.02
Average Mortgage Rate	14.66	14.14	15.00	13.41	14.40	13.86
Average Time Deposit Rate	3.40	3.30	3.80	4.10	3.70	3.80
Average Savings Rate	2.00	2.02	2.02	2.00	2.02	2.02
Average Rate on CDs	2.50	3.00	2.00	2.50	2.50	3.00

	Jul-12	Aug-12	Sep-12	Oct-12	Nov-12	Dec-12
Average Lending Rate	13.74	13.89	13.62	13.68	13.84	13.20
Average Personal Loan Rate	13.94	13.96	14.06	13.92	13.36	14.04
Average Mortgage Rate	13.73	13.79	13.76	12.00	12.00	13.99
Average Time Deposit Rate	3.40	3.80	3.60	3.60	2.60	2.90
Average Savings Rate	2.02	2.02	2.10	2.03	2.00	2.00
Average Rate on CDs	3.00	3.00	3.00	3.00	3.00	3.00

	Jan-13	Feb-13
Average Lending Rate	13.67	13.51
Average Personal Loan Rate	14.79	13.02
Average Mortgage Rate	15.00	13.99
Average Time Deposit Rate	4.20	3.90
Average Savings Rate	2.00	2.00
Average Rate on CDs	3.00	3.00

Note: CDs-Certificate of Deposits

Source : Central Bank of Liberia, Monrovia, Liberia.

**MONEY AND BANKING**

**CENTRAL BANK OF LIBERIA**

**1.6a: Liberian Dollar Exchange Rates - Period Averages: 2011-2013**  
(Liberian dollar per US dollar)

Period 2011	Large bills <sup>1</sup>		
	Buy	Sell	Middle <sup>2</sup>
Jan	71.79	72.75	72.27
Feb	71.96	72.60	72.28
March	71.61	72.31	71.96
April	71.54	72.21	71.88
May	72.00	72.98	72.49
June	72.10	73.10	72.60
July	72.35	73.33	72.84
Aug	72.02	73.00	72.51
Sep	71.58	72.58	72.08
Oct	71.88	72.69	72.29
Nov	71.10	72.10	71.60
Dec	71.43	72.43	71.93
Quarter 1	71.79	72.55	72.17
Quarter 2	71.88	72.76	72.32
Quarter 3	71.98	72.97	72.48
Quarter 4	71.47	72.41	71.94

Period 2012	Large bills <sup>1</sup>		
	Buy	Sell	Middle <sup>2</sup>
Jan	72.44	73.40	72.92
Feb	73.00	74.00	73.50
Mar	73.11	74.11	73.61
Apr	73.5	74.5	74.00
May	74.41	75.37	74.89
Jun	75.04	76.04	75.54
Jul	73.62	74.58	74.10
Aug	72.99	73.99	73.49
Sep	72.84	73.8	73.32
Oct	71.56	72.56	72.06
Nov	71.75	72.75	72.25
Dec	72.00	73.00	72.50
Quarter 1	72.85	73.84	73.34
Quarter 2	74.32	75.30	74.81
Quarter 3	73.15	74.12	73.64
Quarter 4	71.77	72.77	72.27

Period 2013	Large bills <sup>1</sup>		
	Buy	Sell	Middle <sup>2</sup>
Jan	73.46	74.46	73.96
Feb	74.00	75.00	74.50

<sup>2</sup> Average of buying and selling rates.

Source : Central Bank of Liberia, Monrovia, Liberia.

**MONEY AND BANKING**

*CENTRAL BANK OF LIBERIA*

**1.7: Liberian Dollar Exchange Rates - End of Period: 2011 - 2013**

*(Liberian dollars per US dollar)*

<b>Months</b>	<b>2011</b>	<b>2012</b>	<b>2013</b>
<b>Jan</b>	72.50	73.50	74.50
<b>Feb</b>	72.25	73.50	74.50
<b>Mar</b>	72.00	74.00	
<b>Apr</b>	72.50	74.00	
<b>May</b>	72.50	76.00	
<b>Jun</b>	73.00	74.50	
<b>Jul</b>	72.50	73.50	
<b>Aug</b>	72.50	73.50	
<b>Sep</b>	72.00	73.00	
<b>Oct</b>	72.00	72.50	
<b>Nov</b>	71.50	72.50	
<b>Dec</b>	72.50	72.50	

*Source : Central Bank of Liberia, Monrovia, Liberia.*

**1.8: Liberian Dollar Exchange Rates Jan-Feb, 2013***(Liberian dollar per US dollar)*

Period	Large bills <sup>1</sup>			Period	Large bills <sup>1</sup>		
	Buy	Sell	Middle <sup>2</sup>		Buy	Sell	Middle <sup>2</sup>
<b>Jan</b>				<b>Feb</b>			
1	72.00	73.00	72.50	1	74.00	75.00	74.50
2	72.00	73.00	72.50	2	74.00	75.00	74.50
3	72.00	73.00	72.50	4	74.00	75.00	74.50
4	72.00	73.00	72.50	5	74.00	75.00	74.50
5	72.00	73.00	72.50	6	74.00	75.00	74.50
7	73.00	74.00	73.50	7	74.00	75.00	74.50
8	73.00	74.00	73.50	8	74.00	75.00	74.50
9	73.50	74.50	74.00	9	74.00	75.00	74.50
10	73.50	74.50	74.00	11	74.00	75.00	74.50
11	73.50	74.50	74.00	12	74.00	75.00	74.50
12	73.50	74.50	74.00	13	74.00	75.00	74.50
14	73.50	74.50	74.00	14	74.00	75.00	74.50
15	74.00	75.00	74.50	15	74.00	75.00	74.50
16	74.00	75.00	74.50	16	74.00	75.00	74.50
17	74.00	75.00	74.50	18	74.00	75.00	74.50
18	74.00	75.00	74.50	19	74.00	75.00	74.50
19	74.00	75.00	74.50	20	74.00	75.00	74.50
21	74.00	75.00	74.50	21	74.00	75.00	74.50
22	74.00	75.00	74.50	22	74.00	75.00	74.50
23	74.00	75.00	74.50	23	74.00	75.00	74.50
24	74.00	75.00	74.50	25	74.00	75.00	74.50
25	74.00	75.00	74.50	26	74.00	75.00	74.50
26	74.00	75.00	74.50	27	74.00	75.00	74.50
28	74.00	75.00	74.50	28	74.00	75.00	74.50
29	74.00	75.00	74.50				
30	74.00	75.00	74.50				
31	74.00	75.00	74.50				
<b>Average</b>	<b>73.46</b>	<b>74.46</b>	<b>73.96</b>		<b>74.00</b>	<b>75.00</b>	<b>74.50</b>

1. US dollar bank notes of denominations 5 and higher.

2. Average of buying and selling rates.

*Source: Central Bank of Liberia, Monrovia, Liberia.*



**MONEY AND BANKING**

CENTRAL BANK OF LIBERIA

**1.9: Commercial Banks' Inflows and Outflows: 2011 - 2013**

*(Thousands of United States Dollars)*

**Commercial Banks' Inflows and Outflows - 2011**

	<b>Jan-11</b>	<b>Feb-11</b>	<b>Mar-11</b>	<b>Apr-11</b>	<b>May-11</b>	<b>Jun-11</b>	<b>Jan-Jun Total</b>
Inflows	75,593	104,288	94,972	80,030	137,596	125,148	<b>617,627</b>
Outflows	103,536	110,764	112,269	95,329	134,447	140,751	<b>697,096</b>

	<b>Jul-11</b>	<b>Aug-11</b>	<b>Sep-11</b>	<b>Oct-11</b>	<b>Nov-11</b>	<b>Dec-11</b>	<b>Jul-Dec Total</b>	<b>Grand Total</b>
Inflows	73,234	104,986	107,089	146,420	88,806	117,145	<b>637,680</b>	<b>1,255,307</b>
Outflows	101,401	123,631	117,280	110,379	89,970	139,590	<b>682,251</b>	<b>1,379,347</b>

**Commercial Banks' Inflows and Outflows - 2012**

	<b>Jan-12</b>	<b>Feb-12</b>	<b>Mar-12</b>	<b>Apr-12</b>	<b>May-12</b>	<b>Jun-12</b>	<b>Jan-Jun Total</b>
Inflows	137,778	123,231	105,676	89,987	134,652	113,164	<b>704,488</b>
Outflows	89,128	95,314	96,358	107,563	141,634	132,405	<b>662,402</b>

	<b>Jul-12</b>	<b>Aug-12</b>	<b>Sep-12</b>	<b>Oct-12</b>	<b>Nov-12</b>	<b>Dec-12</b>	<b>Jul-Dec Total</b>	<b>Grand Total</b>
Inflows	132,726	103,591	120,663	101,971	123,942	100,849	<b>683,742</b>	<b>1,388,230</b>
Outflows	114,893	105,374	105,697	87,901	83,927	85,089	<b>582,881</b>	<b>1,245,283</b>

**Commercial Banks' Inflows and Outflows - 2013**

	<b>Jan-13</b>	<b>Feb-13</b>
Inflows	53,961	230,903
Outflows	69,933	63,393

Source : Central Bank of Liberia, Monrovia, Liberia.

## MONEY AND BANKING

## 1.10b: Central Bank of Liberia Fx Auction - 2011

Auction No.	Date	FX Offered for sale by CBL (US\$)	Auction Rate L\$/US	Total Purchased US\$	No. of Accepted Bids	No. of Rejected Bids	Value of Rejected Bids (US\$)	Over/(Under) Subscription (US\$)	Total Value of Bids Submitted by Participating Banks/FX Bureaux (US\$)
240	5-Jan-11	1,000,000.00	71.4990	1,000,000.00	15	2	100,000.00	(535,000.00)	1,535,000.00
241	12-Jan-11	750,000.00	72.0000	750,000.00	15	1	110,000.00	(110,000.00)	860,000.00
242	19-Jan-11	1,000,000.00	72.3500	1,000,000.00	13	1	240,000.00	(240,000.00)	1,240,000.00
243	26-Jan-11	1,000,000.00	72.4000	1,000,000.00	17	1	540,000.00	(540,000.00)	1,540,000.00
244	2-Feb-11	750,000.00	72.7000	750,000.00	11	7	590,730.00	(590,730.00)	1,340,730.00
245	9-Feb-11	750,000.00	72.1000	750,000.00	13	-	-	180,700.00	930,700.00
246	16-Feb-11	750,000.00	71.9000	750,000.00	12	1	50,000.00	260,000.00	1,010,000.00
247	23-Feb-11	500,000.00	72.2000	500,000.00	11	2	100,000.00	(207,000.00)	707,000.00
248	2-Mar-11	500,000.00	71.7500	500,000.00	13	0	-	191,500.00	691,500.00
249	9-Mar-11	400,000.00	71.8599	400,000.00	10	4	260,000.00	260,000.00	660,000.00
250	16-Mar-11	400,000.00	71.9000	400,000.00	10	0	45,000.00	45,000.00	445,000.00
251	23-Mar-11	400,000.00	72.3000	400,000.00	15	6	272,700.00	272,700.00	672,700.00
252	30-Mar-11	400,000.00	72.4500	400,000.00	8	8	315,000.00	315,000.00	715,000.00
253	6-Apr-11	400,000.00	71.9000	400,000.00	9	6	290,000.00	290,000.00	690,000.00
254	13-Apr-11	400,000.00	71.8000	400,000.00	9	8	465,000.00	465,000.00	865,000.00
255	20-Apr-11	400,000.00	71.8500	400,000.00	12	4	385,000.00	385,000.00	785,000.00
256	27-Apr-11	400,000.00	72.0000	400,000.00	13	3	344,240.00	344,240.00	744,240.00
257	4-May-11	500,000.00	72.3500	500,000.00	12	8	419,387.28	419,387.28	919,387.28
258	11-May-11	500,000.00	72.1000	500,000.00	14	0	-	125,189.17	625,189.17
259	18-May-11	500,000.00	72.1000	500,000.00	11	8	-	365,600.00	865,600.00
260	25-May-11	500,000.00	72.2000	500,000.00	13	10	-	457,380.00	957,380.00
261	1-Jun-11	500,000.00	72.2500	500,000.00	12	11	-	414,860.00	914,860.00
262	8-Jun-11	750,000.00	72.3000	750,000.00	18	9	-	401,200.00	1,151,200.00
263	15-Jun-11	750,000.00	72.2000	750,000.00	20	11	46,000.00	519,774.98	1,269,774.98
264	22-Jun-11	750,000.00	72.3250	750,000.00	18	8	190,000.00	575,000.00	1,325,000.00
265	29-Jun-11	1,000,000.00	72.2500	1,000,000.00	27	1	195,000.00	275,000.00	1,275,000.00
<b>Total</b>		<b>15,950,000.00</b>		<b>15,950,000.00</b>	<b>351</b>	<b>120</b>	<b>4,958,057.28</b>	<b>4,339,801.43</b>	<b>24,735,261.43</b>

Source : Central Bank of Liberia, Monrovia, Liberia.

## MONEY AND BANKING

## 1.10b: Central Bank of Liberia Fx Auction - 2011

Auction No.	Date	FX Offered for sale by CBL (US\$)	Auction Rate L\$/US	Total Purchased US\$	No. of Accepted Bids	No. of Rejected Bids	Value of Rejected Bids (US\$)	Over/(Under) Subscription (US\$)	Total Value of Bids Participating (US\$)
266	6-Jul-11	1,000,000.00	72.3500	1,000,000.00	31	6	20,000.00	396,870.00	1,396,870.00
267	13-Jul-11	750,000.00	72.4000	750,000.00	21	3	-	200,000.00	950,000.00
268	20-Jul-11	750,000.00	72.4000	750,000.00	22	8	-	443,000.00	1,193,000.00
269	27-Jul-11	1,000,000.00	72.2500	1,000,000.00	22	-	20,000.00	90,000.00	910,000.00
270	3-Aug-11	600,000.00	72.4500	600,000.00	15	14	20,000.00	596,000.00	1,196,000.00
271	10-Aug-11	600,000.00	72.2000	600,000.00	19	5	-	372,000.00	972,000.00
272	17-Aug-11	500,000.00	72.2000	500,000.00	16	8	161,020.00	540,995.00	1,040,995.00
273	24-Aug-11	500,000.00	72.3500	500,000.00	12	9	100,000.00	415,280.00	915,280.00
274	31-Aug-11	500,000.00	72.2500	500,000.00	15	3	-	290,000.00	790,000.00
275	7-Sep-11	500,000.00	72.2100	500,000.00	13	11	-	447,900.00	947,900.00
276	14-Sep-11	500,000.00	72.2500	500,000.00	14	5	150,000.00	358,055.00	858,055.00
277	21-Sep-11	500,000.00	72.2889	500,000.00	13	13	50,000.00	605,000.00	1,105,000.00
278	28-Sep-11	500,000.00	72.1500	500,000.00	14	2	100,000.00	149,100.00	649,100.00
279	5-Oct-11	500,000.00	72.3500	500,000.00	17	0	500,000.00	433,300.00	933,300.00
280	12-Oct-11	1,000,000.00	72.0765	1,000,000.00	17	0	100,000.00	55,000.00	1,055,000.00
281	19-Oct-11	500,000.00	72.3000	500,000.00	10	6	-	167,500.00	667,500.00
282	26-Oct-11	500,000.00	72.2500	500,000.00	12	4	20,000.00	92,150.00	592,150.00
283	2-Nov-11	500,000.00	71.9000	500,000.00	14	2	0.00	160,000.00	660,000.00
284	9-Nov-11	500,000.00	71.2500	500,000.00	14	1	0.00	67,270.00	567,270.00
285	16-Nov-11	500,000.00	71.6500	500,000.00	13	6	0.00	183,000.00	683,000.00
286	23-Nov-11	500,000.00	71.6999	500,000.00	14	2	0.00	145,000.00	645,000.00
287	30-Nov-11	500,000.00	71.9000	500,000.00	13	7	0.00	322,900.00	822,900.00
288	7-Dec-11	500,000.00	71.8500	500,000.00	14	6	0.00	318,540.00	818,540.00
289	14-Dec-11	500,000.00	71.8000	500,000.00	13	3	0.00	165,425.00	665,425.00
290	21-Dec-11	500,000.00	71.8500	500,000.00	14	1	50,000.00	122,000.00	622,000.00
Special Window	22-Dec-11	8,000,000.00	71.0000	8,000,000.00	0.00	0.00	0.00	0.00	0.00
291	28-Dec-11	500,000.00	71.9889	500,000.00	14	4	50,000.00	242,360.00	742,360.00
<b>Total</b>		<b>23,200,000.00</b>		<b>23,200,000.00</b>	<b>406</b>	<b>129</b>	<b>1,341,020.00</b>	<b>7,378,645.00</b>	<b>22,398,645.00</b>

Source : Central Bank of Liberia, Monrovia, Liberia.

MONEY AND BANKING

CENTRAL BANK OF LIBERIA

L10c Central Bank of Liberia Fx Auction - 2012

Auction No.	Date	FX Offered for sale by CBL (US\$)	Auction Rate L\$/US	Total Purchased US\$	No. of Accepted Bids	No. of Rejected Bids	Value of Rejected Bids (US\$)	Over/(Under) Subscription (US\$)	Total Value of Bids Submitted by Participating Banks/FX Bureaux (US\$)
292	4-Jan-12	500,000.00	72.2000	500,000.00	16	8	0.00	467,300.00	967,300.00
293	11-Jan-12	750,000.00	72.5000	750,000.00	20	10	0.00	506,340.00	1,256,340.00
294	18-Jan-12	1,000,000.00	72.4990	1,000,000.00	23	0	0.00	213,000.00	1,213,000.00
295	25-Jan-12	1,000,000.00	72.5000	1,000,000.00	29	0	0.00	419,000.00	1,419,000.00
Special Window	25-Jan-12	375,000.00	71.5000	375,000.00	-	-	-	-	-
Special Window	26-Jan-12	125,000.00	72.5000	125,000.00	-	-	-	-	-
296	1-Feb-12	1,500,000.00	72.2000	1,500,000.00	32	0	86,098.13	343,498.13	1,843,498.13
297	8-Feb-12	1,500,000.00	72.4000	1,500,000.00	35	0	0.00	634,834.00	2,134,834.00
298	15-Feb-12	1,500,000.00	72.6000	1,500,000.00	34	7	0.00	1,123,548.21	2,623,548.21
Special Window	21-Feb-12	500,000.00	73.0000	500,000.00	-	-	-	-	-
299	22-Feb-12	1,000,000.00	72.7665	1,000,000.00	29	13	0.00	1,158,667.00	2,158,667.00
300	29-Feb-12	1,000,000.00	73.0000	1,000,000.00	28	15	0.00	1,387,100.00	2,387,100.00
301	7-Mar-12	500,000.00	73.4900	500,000.00	15	23	150,000.00	1,152,200.00	1,652,200.00
302	16-Mar-12	500,000.00	73.5900	500,000.00	16	9	50,000.00	377,000.00	877,000.00
303	21-Mar-12	500,000.00	73.8000	500,000.00	17	19	250,000.00	1,073,200.00	1,573,200.00
304	28-Mar-12	500,000.00	73.9999	500,000.00	13	31	224,492.56	1,422,592.56	1,922,592.56
305	4-Apr-12	750,000.00	74.2400	750,000.00	17	20	0.00	744,000.00	1,494,000.00
306	11-Apr-12	1,000,000.00	74.4000	1,000,000.00	24	21	375,000.00	1,355,500.00	2,355,500.00
307	18-Apr-12	1,000,000.00	74.2000	1,000,000.00	22	11	100,000.00	1,112,240.00	2,112,240.00
308	25-Apr-12	1,000,000.00	74.4500	1,000,000.00	25	11	65,000.00	1,362,000.00	2,362,000.00
309	2-May-12	1,000,000.00	74.5000	1,000,000.00	31	7	-	1,194,000.00	2,194,000.00
Special Window	8-May-12	1,000,000.00	74.0000	1,000,000.00	-	-	-	-	-
310	9-May-12	1,000,000.00	74.7100	1,000,000.00	22	19	200,000.00	1,630,000.00	2,630,000.00
Special Window	15-May-12	1,000,000.00	74.5000	1,000,000.00	-	-	-	-	-
311	16-May-12	1,000,000.00	74.8500	1,000,000.00	23	10	-	1,079,000.00	2,079,000.00
312	23-May-12	2,200,000.00	74.8500	2,200,000.00	36	0	185,513.51	1,291,663.51	3,491,663.51
313	30-May-12	2,200,000.00	74.9000	2,200,000.00	35	0	-	1,934,000.00	4,134,000.00
314	6-Jun-12	3,000,000.00	74.7500	3,000,000.00	41	0	-	1,654,764.90	4,654,764.90
315	13-Jun-12	3,000,000.00	74.4525	3,000,000.00	43	0	-	1,683,000.00	4,683,000.00
316	20-Jun-12	3,000,000.00	74.1000	3,000,000.00	36	0	-	766,167.50	3,766,167.50
317	27-Jun-12	2,000,000.00	73.9525	2,000,000.00	34	0	-	1,282,500.00	3,282,500.00
<b>Total</b>		<b>36,900,000.00</b>		<b>36,900,000.00</b>	<b>696</b>	<b>234</b>	<b>1,686,104.20</b>	<b>27,367,115.81</b>	<b>61,267,115.81</b>

Source : Central Bank of Liberia, Monrovia, Liberia.

MONEY AND BANKING

CENTRAL BANK OF LIBERIA

L10c Central Bank of Liberia Fx Auction - 2012 (continued)

Auction		FX Offered	Auction	Total	No. of	No. of	Value of	Over/(Under)	Total Value of Bids
No.	Date	for sale by	Rate	Purchased	Accepted	Rejected	Rejected	Subscription	Submitted by Participating
		CBL (US\$)	LS/US	US\$	Bids	Bids	Bids (US\$)	(US\$)	Banks/FX Bureaux (US\$)
318	4-Jul-12	1,000,000.00	73.7500	1,000,000.00	30	-	-	1,040,000.00	2,040,000.00
Special Window	Jul 10-Jul 16, 2012	500,000.00	73.7500	500,000.00					
319	11-Jul-12	750,000.00	73.5000	750,000.00	30	-	-	1,577,500.00	2,327,500.00
Special Window	Jul 17-Jul 20, 2012	250,000.00	73.5000	250,000.00					
320	18-Jul-12	750,000.00	73.0000	750,000.00	29.00	-	-	1,315,000.00	2,065,000.00
321	25-Jul-12	1,000,000.00	73.0000	1,000,000.00	27.00	-	70,000.00	1,095,000.00	2,095,000.00
Special Window	Jul 31-Aug 6, 2012	499,978.51	73.0000	499,978.51					
322	1-Aug-12	2,000,000.00	73.0000	2,000,000.00	43	-	-	1,154,150.00	3,154,150.00
Special Window	Aug 6-Aug 10, 2012	500,000.00	72.9500	500,000.00					
323	8-Aug-12	1,000,000.00	72.9500	1,000,000.00	41.00	-	-	1,855,200.00	2,855,200.00
Special Window	Aug 14-Aug 20, 2012	499,800.00	72.7500	499,800.00					
324	15-Aug-12	1,000,000.00	72.7500	1,000,000.00	47	1	-	3,158,550.00	4,158,550.00
325	23-Aug-12	1,000,000.00	73.0000	100,000.00	33	11	100,000.00	1,663,800.00	2,663,800.00
326	29-Aug-12	900,000.00	73.0000	900,000.00	38	1	90,000.00	1,402,875.00	2,402,875.00
327	5-Sep-12	900,000.00	72.9000	900,000.00	39	2	140,000.00	1,604,100.00	2,604,100.00
328	12-Sep-12	900,000.00	72.5000	900,000.00	45	1	40,000.00	2,213,900.00	3,113,900.00
329	19-Sep-12	1,500,000.00	72.4200	1,500,000.00	41	0	50,000.00	1,378,300.00	2,878,300.00
330	26-Sep-12	1,500,000.00	72.3500	1,500,000.00	39	0	35,426.62	1,245,426.62	2,745,426.62
331	3-Oct-12	900,000.00	72.2500	900,000.00	31	0	-	1,015,000.00	1,915,000.00
332	10-Oct-12	800,000.00	71.0000	800,000.00	34	0	-	717,000.00	1,517,000.00
333	17-Oct-12	700,000.00	71.0000	700,000.00	42	0	-	2,142,190.00	2,842,190.00
334	24-Oct-12	700,000.00	71.0000	700,000.00	45	2	-	2,019,015.00	2,719,015.00
335	31-Oct-12	1,000,000.00	71.7500	1,000,000.00	15	32	50,000.00	2,080,280.00	3,080,280.00
336	7-Nov-12	1,000,000.00	71.8500	1,000,000.00	36	8	-	2,091,700.00	3,091,700.00
337	14-Nov-12	700,000.00	71.2500	700,000.00	41	0	-	1,688,360.00	2,388,360.00
338	21-Nov-12	500,000.00	71.2500	500,000.00	41	0	-	2,013,650.00	2,513,650.00
339	28-Nov-12	500,000.00	71.7500	500,000.00	37	5	-	1,990,000.00	2,490,000.00
340	5-Dec-12	750,000.00	71.8000	750,000.00	38	1	-	1,635,000.00	2,385,000.00
341	12-Dec-12	750,000.00	71.9000	750,000.00	39	0	20,000.00	1,789,000.00	2,539,000.00
342	19-Dec-12	1,000,000.00	71.8000	1,000,000.00	48	0	-	2,468,500.00	3,468,500.00
343	26-Dec-12	700,000.00	71.8500	700,000.00	50	2	40,000.00	3,090,000.00	3,830,000.00
<b>Total</b>		<b>26,449,778.51</b>		<b>25,549,778.51</b>	<b>979</b>	<b>66</b>	<b>635,426.62</b>	<b>45,443,496.62</b>	<b>69,883,496.62</b>

Source : Central Bank of Liberia, Monrovia, Liberia.

## MONEY AND BANKING

## L.10c Central Bank of Liberia Fx Auction - 2013

Auction No.	Date	FX Offered for sale by CBL (US\$)	Auction Rate LS/US	Total Purchased US\$	No. of Accepted Bids	No. of Rejected Bids	Value of Rejected Bids (US\$)	Over/(Under) Subscription (US\$)	Total Value of Bids Submitted by Participating Banks/FX Bureaux (US\$)
344	2-Jan-13	500,000.00	72.0000	500,000.00	51	0	25,000.00	3,160,600.00	3,660,600.00
SPECIAL WINDOW	3-Jan-13	500,000.00	72.0000	500,000.00					
345	9-Jan-13	500,000.00	72.5000	500,000.00	40	23	185,768.00	4,448,668.00	4,948,668.00
SPECIAL WINDOW	9-Jan-13	500,000.00	72.0000	500,000.00					
346	16-Jan-13	1,000,000.00	72.8500	1,000,000.00	48	19	39,137.00	4,431,317.00	5,431,317.00
SPECIAL WINDOW	16-Jan-13	912,500.00	72.5000	912,500.00					
SPECIAL WINDOW	17-Jan-13	87,500.00	72.8500	87,500.00					
347	23-Jan-13	1,500,000.00	73.0000	1,500,000.00	65	3	0.00	4,085,420.00	5,585,420.00
SPECIAL WINDOW	23-Jan-13	729,900.00	72.8500	729,900.00					
SPECIAL WINDOW	24-Jan-13	270,100.00	73.0000	270,100.00					
348	30-Jan-13	1,500,000.00	73.0000	1,500,000.00	75	0	0.00	3,868,420.00	5,368,420.00
SPECIAL WINDOW	30-Jan-13	1,000,000.00	73.0000	1,000,000.00					
349	6-Feb-13	1,500,000.00	73.0000	1,500,000.00	79	0	92,322.63	4,451,947.80	5,951,947.80
SPECIAL WINDOW	6-Feb-13	1,000,000.00	73.0000	1,000,000.00					
350	13-Feb-13	1,000,000.00	73.3500	1,000,000.00	43	15	575,000.00	3,903,500.00	4,903,500.00
SPECIAL WINDOW	13-Feb-13	1,000,000.00	73.3500	1,000,000.00					
351	20-Feb-13	1,250,000.00	73.2000	1,250,000.00	74	0	118,957.35	4,863,167.35	6,113,167.35
SPECIAL WINDOW	20-Feb-13	1,000,000.00	73.2000	1,000,000.00					
352	27-Feb-13	1,250,000.00	73.1000	1,250,000.00	68	0	380,000.00	4,779,750.00	6,029,750.00
SPECIAL WINDOW	27-Feb-13	750,000.00	73.1000	750,000.00					
<b>Total</b>		<b>17,750,000.00</b>		<b>17,750,000.00</b>	<b>543</b>	<b>60</b>	<b>1,416,184.98</b>	<b>37,992,790.15</b>	<b>47,992,790.15</b>

Source : Central Bank of Liberia, Monrovia, Liberia.

## REAL SECTOR

CENTRAL BANK OF LIBERIA

**2.1b: Harmonized Consumer Price Index (HCPI) -2011**

Function	Weight (%)	Jan-11	Feb-11	Mar-11	Apr-11	May-11	Jun-11
Food & Non-alcoholic Beverages	45.20	182.11	184.33	181.13	180.83	183.77	189.34
Alcoholic Beverages, Tobacco & Narcotics	3.03	151.75	152.23	152.49	153.59	154.17	156.16
Clothing & Footwear	7.75	164.90	165.00	164.76	167.08	168.16	168.40
Housing, Water, Electricity, Gas & other fuels	12.00	122.33	121.50	122.88	125.47	126.63	126.57
Furnishings, Household Equipment & Routine Maintenance of the House	5.25	172.80	174.43	174.09	174.44	175.44	175.62
Health	3.91	104.05	104.05	104.05	104.05	104.05	104.05
Transport	6.11	174.87	176.23	197.02	198.76	206.76	206.79
Communication	1.53	86.44	86.44	86.40	86.39	86.47	86.48
Recreation & Culture	3.85	131.35	131.36	133.68	137.75	138.07	138.13
Education	3.20	100.00	100.00	100.00	100.00	100.00	100.00
Restaurants & Hotels	4.64	261.33	261.36	261.65	261.37	262.79	266.52
Miscellaneous Goods & Services	3.53	133.31	128.26	128.80	129.59	135.39	135.86
<b>General Index</b>	<b>100.00</b>	<b>164.61</b>	<b>165.53</b>	<b>165.61</b>	<b>166.29</b>	<b>168.69</b>	<b>171.48</b>

Function	Weight (%)	Jul-11	Aug-11	Sep-11	Oct-11	Nov-11	Dec-11
Food & Non-alcoholic Beverages	45.20	206.36	210.09	200.35	207.67	201.93	202.19
Alcoholic Beverages, Tobacco & Narcotics	3.03	155.58	155.44	157.38	157.58	156.92	161.23
Clothing & Footwear	7.75	169.61	169.04	168.24	168.63	167.4	168.77
Housing, Water, Electricity, Gas & other fuels	12.00	128.85	129.56	129.25	129.23	130.35	128.88
Furnishings, Household Equipment & Routine Maintenance of the House	5.25	187.47	187.05	189.98	190.38	189.08	189.7
Health	3.91	104.05	104.05	104.05	104.05	104.05	104.05
Transport	6.11	206.38	206.30	205.3	205.49	204.93	204.82
Communication	1.53	86.51	86.47	86.42	86.44	86.35	86.40
Recreation & Culture	3.85	137.02	136.85	136.62	136.73	136.36	136.54
Education	3.20	100.00	100.00	100.00	100.00	100.00	100.00
Restaurants & Hotels	4.64	267.10	266.32	265.32	265.81	264.20	264.97
Miscellaneous Goods & Services	3.53	135.54	135.03	134.77	132.01	134.32	134.57
<b>General Index</b>	<b>100.00</b>	<b>180.09</b>	<b>181.73</b>	<b>177.31</b>	<b>180.62</b>	<b>177.93</b>	<b>178.19</b>

*The Harmonized Consumer Price Index (HCPI) is an amalgamation of the Classification of Individual Consumption by Purpose (COICOP), consisting of twelve functions (major groups) together with the Monrovia Consumer Price Index (MCPI) and its weights obtained from the 1964 limited expenditure survey. The Survey sample comprised wage-earner and clerical-employee households of two or more persons with monthly income not exceeding US\$250.*

*Sources* : Liberia Institute for Statistics & Geo-Information Services (LISGIS) and Central Bank of Liberia (CBL)

## REAL SECTOR

CENTRAL BANK OF LIBERIA

**2.1c: Harmonized Consumer Price Index (HCPI) -2012**

Function	Apr-12	May-12	Jun-12
Food & Non-alcoholic Beverages	202.02	202.79	210.47
Alcoholic Beverages, Tobacco & Narcotics	157.96	157.03	156.62
Clothing & Footwear	172.52	174.09	175.32
Housing, Water, Electricity, Gas & other fuels	130.94	132.63	132.07
Furnishings, Household Equipment & Routine Maintenance of the House	187.24	188.86	190.03
Health	104.05	104.05	104.05
Transport	208.96	209.74	209.25
Communication	86.66	86.78	86.86
Recreation & Culture	137.64	138.12	138.47
Education	100.00	100.00	100.00
Restaurants & Hotels	269.81	271.89	273.41
Miscellaneous Goods & Services	137.44	138.25	139.78
<b>General Index</b>	<b>179.05</b>	<b>179.97</b>	<b>183.63</b>

Function	Oct-12	Nov-12	Dec-12	Jan-13	Feb-13
Food & Non-alcoholic Beverages	220.26	225.16	226.78	231.06	226.30
Alcoholic Beverages, Tobacco & Narcotics	167.30	165.38	160.37	164.33	170.39
Clothing & Footwear	174.27	172.76	173.87	169.13	175.72
Housing, Water, Electricity, Gas & other fuels	132.27	131.75	130.65	131.38	131.03
Furnishings, Household Equipment & Routine Maintenance of the House	198.17	192.66	190.40	181.56	185.26
Health	104.05	101.35	99.32	104.05	104.05
Transport	218.23	217.48	226.23	226.92	227.58
Communication	86.41	86.44	86.47	86.66	86.73
Recreation & Culture	145.98	146.08	146.21	146.26	146.42
Education	100.00	100.00	100.00	100.00	100.00
Restaurants & Hotels	266.49	266.94	270.57	273.97	275.22
Miscellaneous Goods & Services	142.70	142.70	141.63	142.64	144.24
<b>General Index</b>	<b>189.35</b>	<b>190.92</b>	<b>191.93</b>	<b>193.66</b>	<b>192.52</b>

The Harmonized Consumer Price Index (HCPI) is an amalgamation of the Classification of Individual Consumption by Purpose (COICOP), consisting of twelve functions (major groups) together with the Monrovia Consumer Price Index (MCPI) and its weights obtained from the 1964 limited expenditure survey. The Survey sample comprised wage-earner and clerical-employee households of two or more persons with monthly income not exceeding US\$250.

Sources : Liberia Institute for Statistics & Geo-Information Services (LISGIS) and Central Bank of Liberia (CBL)



REAL SECTOR

CENTRAL BANK OF LIBERIA

2.2b: HCPI Inflation Rate - 2011 (Year-on-Year)

Function	Weight (%)	Jan-11	Feb-11	Mar-11	Apr-11	May-11	Jun-11
Food & Non-alcoholic Beverages	45.20	6.34	12.63	8.11	9.03	7.94	11.04
Alcoholic Beverages, Tobacco & Narcotics	3.03	12.86	9.58	10.59	10.92	8.90	8.42
Clothing & Footwear	7.75	4.77	6.15	6.20	8.29	9.28	8.07
Housing, Water, Electricity, Gas & other fuels	12.00	4.56	2.40	4.47	5.62	6.80	6.15
Furnishings, Household Equipment & Routine Maintenance of the House	5.25	-3.50	-3.09	-2.68	-1.52	-0.56	-2.05
Health	3.91	0.00	0.00	0.00	0.00	0.00	0.00
Transport	6.11	6.27	6.57	19.74	20.61	24.42	24.44
Communication	1.53	5.73	5.65	5.64	5.77	5.97	5.72
Recreation & Culture	3.85	1.10	0.92	2.78	6.30	6.82	6.17
Education	3.20	0.00	0.00	0.00	0.00	0.00	0.00
Restaurants & Hotels	4.64	3.91	3.50	3.78	1.79	2.94	2.91
Miscellaneous Goods & Services	3.53	-1.83	-5.13	-3.76	-2.32	2.69	1.75
<b>General Rate of Inflation</b>	<b>100.00</b>	<b>4.74</b>	<b>7.45</b>	<b>6.54</b>	<b>7.39</b>	<b>7.58</b>	<b>8.78</b>

Function	Weight (%)	Jul-11	Aug-11	Sep-11	Oct-11	Nov-11	Dec-11
Food & Non-alcoholic Beverages	45.20	15.71	15.21	6.74	14.60	12.47	16.07
Alcoholic Beverages, Tobacco & Narcotics	3.03	9.40	10.81	12.49	12.26	8.23	8.83
Clothing & Footwear	7.75	5.10	4.51	4.75	4.80	4.25	4.68
Housing, Water, Electricity, Gas & other fuels	12.00	6.34	6.21	6.06	6.23	7.46	6.50
Furnishings, Household Equipment & Routine Maintenance of the House	5.25	-0.31	-0.72	1.36	11.75	12.80	11.89
Health	3.91	-0.32	-0.32	-0.32	-0.32	-0.32	0.00
Transport	6.11	20.08	20.02	19.44	19.37	19.04	17.67
Communication	1.53	0.08	0.00	0.03	0.04	0.26	0.26
Recreation & Culture	3.85	5.05	4.83	4.65	4.20	4.85	4.83
Education	3.20	0.00	0.00	0.00	0.00	0.00	0.00
Restaurants & Hotels	4.64	2.26	1.78	1.98	1.94	3.30	3.30
Miscellaneous Goods & Services	3.53	0.94	-0.26	0.18	-1.72	3.28	3.22
<b>General Rate of Inflation</b>	<b>100.00</b>	<b>10.60</b>	<b>10.27</b>	<b>6.21</b>	<b>10.68</b>	<b>9.88</b>	<b>11.45</b>

The Harmonized Consumer Price Index (HCPI) is an amalgamation of the Classification of Individual Consumption by Purpose (COICOP), consisting of twelve functions (major groups) together with the Monrovia Consumer Price Index (MCPI) and its weights, obtained from the 1964 limited expenditure survey.

The Survey sample comprised wage-earner and clerical-employee households of two or more persons with monthly income not exceeding US\$250.

Sources : Liberia Institute for Statistics & Geo-Information Services (LISGIS) and Central Bank of Liberia (CBL)

REAL SECTOR

CENTRAL BANK OF LIBERIA

2.2c: HCPI Inflation Rate - 2012(Year-on-Year)

Function	Weight (%)	Jan-12	Feb-12	Mar-12	Apr-12	May-12	Jun-12
Food & Non-alcoholic Beverages	45.20	11.91	13.95	12.79	11.72	10.35	11.16
Alcoholic Beverages, Tobacco & Narcotics	3.03	8.63	8.93	4.43	2.85	1.86	0.29
Clothing & Footwear	7.75	3.43	3.99	4.28	3.26	3.53	4.1
Housing, Water, Electricity, Gas & other fuels	12.00	6.61	8.07	7.36	4.36	4.74	4.35
Furnishings, Household Equipment & Routine Maintenance of the House	5.25	7.81	7.41	7.73	7.34	7.65	8.21
Health	3.91	0	0	0	0	0	0
Transport	6.11	16.97	16.46	5.07	5.13	1.44	1.19
Communication	1.53	0.1	0.18	0.23	0.32	0.36	0.44
Recreation & Culture	3.85	4.35	4.58	2.81	-0.08	0.03	0.24
Education	3.20	0	0	0	0	0	0
Restaurants & Hotels	4.64	2.28	2.79	2.77	3.23	3.46	2.59
Miscellaneous Goods & Services	3.53	1.54	6.65	6.32	6.05	2.12	2.89
<b>General Rate of Inflation</b>	<b>100.00</b>	<b>8.93</b>	<b>10.3</b>	<b>8.69</b>	<b>7.67</b>	<b>6.69</b>	<b>7.08</b>

Function	Weight (%)	Jul-12	Aug-12	Sep-12	Oct-12	Nov-12	Dec-12	Jan-13	Feb-13
Food & Non-alcoholic Beverages	45.20	5.56	7.51	9.61	6.06	11.50	12.16	13.37	7.74
Alcoholic Beverages, Tobacco & Narcotics	3.03	1.2	1.02	4.37	6.17	5.40	-0.53	-0.31	2.76
Clothing & Footwear	7.75	1.82	1.52	4.24	3.34	3.20	3.02	-0.84	2.41
Housing, Water, Electricity, Gas & other fuels	12.00	4.96	1.08	2.22	2.35	1.08	1.37	0.74	-0.21
Furnishings, Household Equipment & Routine Maintenance of the House	5.25	0.34	0.12	-0.72	4.09	1.89	0.37	-2.55	-1.12
Health	3.91	0	0.00	0	0.00	-2.60	-4.55	0.00	0.00
Transport	6.11	-0.49	-0.39	0.39	6.20	6.12	10.45	10.94	10.89
Communication	1.53	0.19	0.15	0.18	-0.03	0.10	0.08	0.15	0.15
Recreation & Culture	3.85	0.49	0.38	0.48	6.76	7.13	7.09	6.70	6.58
Education	3.20	0.00	0.00	0.00	0.00	0.00	0.00	0.00	0.00
Restaurants & Hotels	4.64	1.10	1.00	1.55	0.26	1.04	2.11	2.50	2.45
Miscellaneous Goods & Services	3.53	1.40	1.50	1.32	8.10	6.24	5.25	5.38	5.44
<b>General Rate of Inflation</b>	<b>100.00</b>	<b>3.58</b>	<b>4.25</b>	<b>5.68</b>	<b>4.84</b>	<b>7.30</b>	<b>7.71</b>	<b>8.00</b>	<b>5.48</b>

The Harmonized Consumer Price Index (HCPI) is an amalgamation of the Classification of Individual Consumption by Purpose (COICOP), consisting of twelve functions (major groups) together the Monrovia Consumer Price Index (MCPI) and its weights, obtained from the 1964 limited expenditure survey.

The Survey sample comprised wage-earner and clerical-employee households of two or more persons with monthly income not exceeding US\$250.

Sources : Liberia Institute for Statistics & Geo-Information Services (LISGIS) and Central Bank of Liberia (CBL)

**REAL SECTOR**

CENTRAL BANK OF LIBERIA

**2.3b: Key Output Volume - 2011**

Commodity	Unit	Jan-11	Feb-11	Mar-11	Apr-11	May-11	Jun-11	Jan-Jun Total
<b>Agriculture</b>								
Rubber	Mt.	7,255.00	19,455.00	521.00	11,813.48	5,481	5,938	50,463.45
Cocoa Beans	Mt.	2,023.00	172.00	3,742.00	3,329.00	5,941	4,106	19,313.00
Coffee	Mt.	-	-	-	-	-	154	154.00
Round Logs	M <sup>3</sup>	10,819.00	2,629.00	3,042.00	6,725.36	2,813	10,803	36,831.36
Sawn Timber	Pcs.	27,228.00	41,540.00	48,464.00	42,968.00	50,002	28,161	238,363.00
Fish	Kg.	-	-	-	-	-	-	-
<b>Mining</b>								
Gold	Ounces	1,556.00	1,127.00	1,237.00	1,595.00	1,577	1,573	8,665.00
Diamond	Carat	2,210.00	2,097.00	3,206.00	558.01	4,686	5,291	18,048.01
Iron Ore	Mt.	-	-	-	-	-	-	0.00
<b>Manufacturing</b>								
Cement	Mt.	2,553.00	3,507.00	2,651.00	7,263.00	3,166	9,543	28,683.00
Spirit	Litre	59,544.00	52,832.00	60,873.00	58,704.21	61,647	66,489	360,089.21
Beer	Litre	616,550.00	639,543.00	841,177.00	933,970.16	894,377	955,400	4,881,017.16
Stout	Litre	309,324.00	378,774.00	438,926.00	427,299.84	401,916	492,117	2,448,356.84
Malta	Litre	98,208.00	96,188.00	62,220.00	64,088.64	132,018	101,677	554,400.08
Soft Drink	Litre	1,182,283.00	1,109,477.00	1,237,003.00	1,374,459.84	1,166,695	939,190	7,009,107.64
Oil Paint	Gal.	1,400.00	4,080.00	3,440.00	2,760.00	3,280	1,640	16,600.00
Water Paint	Gal.	13,550.00	27,750.00	19,850.00	25,688.00	14,650	16,200	117,688.00
Varnish	Gal.	350.00	1,020.00	860.00	690.00	820	410	4,150.00
Manoline Hair Grease	Kg.	5,687.00	3,637.00	4,099.00	5,686.80	2,327	3,620	25,057.00
Thinner	Gal.	2,300.00	3,500.00	3,000.00	3,125.00	2,200	2,500	16,625.00
Rubbing Alcohol	Litre	22,518.00	21,035.00	-	22,518.38	32,946	34,654	133,671.48
Soap	Kg.	37,122.00	48,855.00	15,755.00	37,121.55	41,715	43,406	223,974.65
Chlorox	Litre	77,047.00	67,986.00	42,127.00	106,218.46	132,581	52,964	478,922.94
Nail	Kg.	-	-	-	-	-	-	0.00
Candle	Kg.	43,176.00	49,193.00	32,666.00	59,115.00	37,664	31,574	253,387.00
Mattresses	Pcs.	12,600.00	13,130.00	14,960.00	11,205.00	15,989	12,874	80,758.00
Finished Water <sup>1</sup>	Gal.	178,985,090.50	162,390,947.44	148,029,162.25	150,802,081.28	149,163,690	140,788,206	930,159,177.79

1: Water from White Plains Treatment Plant

Sources : Lands, Mines & Energy; Commerce & Industry; Forestry Development Authority (FDA); Liberia Produce Marketing Corporation (LPMC) and Liberia Water & Sewer Corporation (LWSC), Monrovia, Liberia

## REAL SECTOR

CENTRAL BANK OF LIBERIA

## 2.3b: Key Output Volume - 2011 -Continued

Commodity	Unit	Jul-11	Aug-11	Sep-11	Oct-11	Nov-11	Dec-11	Jul-Dec Total	Grand Total
<b>Agriculture</b>									
Rubber	Mt.	8,567	9,696	3,123	11,163	1,684	8,883	43,116	93,580
Cocoa Beans	Mt.	1,015	843	2,014	1,077	1,020	1,410	7,379	26,692
Coffee	Mt.	-	27	-	na	na	na	27	181
Round Logs	M <sup>3</sup>	16,147	2,375	303	9,129	7,024	2,298	37,275	74,106
Sawn Timber	Pcs.	30,325	21,540	12,412	9,160	10,540	9,200	93,177	331,540
Fish	Kg.	-	-	-	-	-	-	-	-
<b>Mining</b>									
Gold	Ounces	969	1,329	1,016	443	1,210	1,196	6,163	14,828
Diamond	Carat	4,526	7,849	3,410	3,777	1,095	1,162	21,819	39,867
Iron Ore	Mt.	-	-	6,821	38,800	146,647	104,701	296,969	296,969
<b>Manufacturing</b>									
Cement	Mt.	7,429	9,557	6,413	6,637	10,306	11,569	51,911	80,594
Spirit	Litre	52,576	54,104	52,777	54,879	52,424	62,541	329,301	689,390
Beer	Litre	920,658	927,094	700,401	727,354	689,083	1,071,264	5,035,854	9,916,871
Stout	Litre	489,290	489,377	428,670	422,160	504,623	599,386	2,933,506	5,381,863
Malta	Litre	-	203,314	64,350	32,622	67,502	66,306	434,094	988,494
Soft Drink	Litre	1,100,117	950,998	796,644	1,027,296	1,122,422	1,519,949	6,517,426	13,526,534
Oil Paint	Gal.	3,440	1,200	2,096	2,150	4,865	4,580	18,331	34,931
Water Paint	Gal.	24,200	21,525	16,150	20,850	25,750	34,085	142,560	260,248
Varnish	Gal.	860	300	524	430	973	916	4,003	8,153
Manoline Hair Grease	Kg.	2,495	1,772	1,940	na	3,167	3,360	12,734	37,791
Thinner	Gal.	1,425	860	495	1800	2,420	2702	9,702	26,327
Rubbing Alcohol	Litre	-	13,529	24,676	28,361	20,945	-	87,511	221,182
Soap	Kg.	52,205	47,376	54,203	20,391	27,917	33,022	235,114	459,089
Chlorox	Litre	8,293	53,440	32,112	52,964	42,339	26,521	215,669	694,592
Nail	Kg.	-	-	-	-	-	-	-	-
Candle	Kg.	43,281	31,479	26,891	42,011	20,979	24,549	189,190	442,577
Mattresses	Pcs.	9,870	7,917	9,740	10,210	9,835	13,670	61,242	142,000
Finished Water <sup>1</sup>	Gal.	-	-	-	-	-	-	-	930,159,178

1: Water from White Plains Treatment Plant

Sources : Lands, Mines & Energy; Commerce & Industry; Forestry Development Authority (FDA);  
Liberia Produce Marketing Corporation (LPMC) and Liberia Water & Sewer Corporation (LWSC), Monrovia, Liberia

**REAL SECTOR**

CENTRAL BANK OF LIBERIA

**2.3c: Key Output Volume - 2012**

Commodity	Unit	Jan-12	Feb-12	Mar-12	Apr-12	May-12	Jun-12	Jan-Jun Total
<b>Agriculture</b>								
Rubber	Mt.	5,766	3,564	12,125	344	947	12,097	34,843
Cocoa Beans	Mt.	1,305	1,230	963	672	674	367	5,210
Coffee	Mt.	-	-	-	38	97	-	135
Round Logs	M <sup>3</sup>	22,509	8,177	14,256	26,027	19,547	7,949	98,466
Sawn Timber	Pcs.	34,632	50,908	7,160	30,110	20,585	10,881	154,276
Fish	Kg.	-	-	-	-	-	-	-
<b>Mining</b>								
Gold	Ounces	1,645	1,458	1,558	2,098	1,118	2,288	10,165
Diamond	Carat	2,856	3,288	3,802	2,644	3,400	1,282.00	17,272
Iron Ore	Mt.	132,000	396,000	462,000	396,000	189,000	-	1,575,000
<b>Manufacturing</b>								
Cement	Mt.	10,662	14,580	12,462	13,322	11,065	9,362	71,452
Spirit	Litre	52,453	53,100	58,243	59,624	63,063	66,234	352,717
Beer	Litre	733,228	721,010	913,481	725,199	753,233	786,849	4,633,000
Stout	Litre	309,324	378,774	438,926	385,569	370,466	490,525	2,373,584
Malta	Litre	98,208	96,188	62,220	33,343	50,157	52,953	393,070
Soft Drink	Litre	1,095,732	1,156,334	1,178,100	1,120,637	1,194,912	1,123,992	6,869,707
Oil Paint	Gal.	4,538	3,172	3,040	4,125	2,760	1,589	19,223
Water Paint	Gal.	29,245	20,235	20,627	27,180	24,840	17,975	140,102
Varnish	Gal.	1,134	793	760	1,031	690	397	4,806
Manoline Hair Grease	Kg.	4,276	1,050	4,696	1,957	3,436	4,696	20,111
Thinner	Gal.	1,745	1,470	875	1,620	1,500	860	8,070
Rubbing Alcohol	Litre	20,676	-	11,237	22,473	25,440	11,237	91,062
Soap	Kg.	35,520	68,321	20,718	32,027	28,222	20,718	205,526
Chlorox	Litre	66,238	55,587	55,984	62,131	49,546	55,984	345,468
Nail	Kg.	-	-	-	-	-	-	-
Candle	Kg.	31,574	21,011	31,563	13,640	26,250	31,563	155,601
Mattresses	Pcs.	10,050	9,833	9,970	8,975	9,039	7,750	55,617
Finished Water <sup>1</sup>	Gal.	68,366,386	59,415,052	52,688,677	199,794,720	185,545,039	178,825,333	744,635,206

1: Water from White Plains Treatment Plant

Sources : Lands, Mines & Energy; Commerce & Industry; Forestry Development Authority (FDA);  
Liberia Produce Marketing Corporation (LPMC) and Liberia Water & Sewer Corporation (LWSC), Monrovia, Liberia

**REAL SECTOR**

CENTRAL BANK OF LIBERIA

**2.3c: Key Output Volume - 2012 (contd.) 2013**

Commodity	Unit	Jul-12	Aug-12	Sep-12	Oct-12	Nov-12	Dec-12	Jan-13	Feb-13
<b>Agriculture</b>									
Rubber	Mt.	856	601	8,573	6,861	4,213	7,837	875	1,276
Cocoa Beans	Mt.	165	255	213	397	916	927	876	403
Coffee	Mt.	na	na	na	na	na	na	-	-
Round Logs	M <sup>3</sup>	33,428	4,916	627	28,542	23,345	24,449	-	-
Sawn Timber	Pcs.	29,593	21,020	12,112	31,442	35,372	31,442	34,575	14,753
Fish	Kg.	-	-	-	-	-	-	-	-
<b>Mining</b>									
Gold	Ounces	2,161	1,131	1,835	1,753	1,463	2,102	1,732	1,822
Diamond	Carat	2,819	3,092	3,841	1,853	3,018	2,377	4,683	2,785
Iron Ore	Mt.	22,800	342,000	110,850	na	57,000	57,000	297,000	482,000
<b>Manufacturing</b>									
Cement	Mt.	9,370	7,759	4,695	8,016	10,585	9,714	9,763	3,870
Spirit	Litre	81,436	75,576	50,651	na	47,022	55,386	48,620	38,401
Beer	Litre	846,940	957,096	179,382	837,805	954,732	720,377	857,690	754,370
Stout	Litre	510,777	805,163	53,761	488,957	424,251	602,965	70,323	57,968
Malta	Litre	70,194	102,532	-	172,102	68,785	-	8,398	6,247
Soft Drink	Litre	863,006	648,130	649,908	935,626	894,809	1,324,274	1,143,965	1,081,794
Oil Paint	Gal.	6,116	6,322	5,529	6,018	2,360	3,697	10,282	8,339
Water Paint	Gal.	33,192	36,429	32,731	31,893	11,227	19,166	12,593	11,216
Varnish	Gal.	1,529	1,581	1,382	1,504	590	924	1,948	1,647
Manoline Hair Grease	Kg.	-	5,687	3,058	na	na	1,789	3,914	916
Thinner	Gal.	2,611	2,217	1,563	2,172	675	1,026	1,862	1,021
Rubbing Alcohol	Litre	12,450	21,979	28,317	na	na	19,372	27,912	13,484
Soap	Kg.	38,113	40,784	39,414	na	na	na	22,886	21,343
Chlorox	Litre	55,666	79,512	79,723	na	na	67,854	91,461	36,484
Nail	Kg.	-	-	-	-	-	-	na	na
Candle	Kg.	30,345	25,788	40,919	na	na	15,257	21,032	10,962
Mattresses	Pcs.	7,026	5,830	8,940	8,279	6,890	16,085	9,030	8,540
Finished Water <sup>1</sup>	Gal.	148,477,928	167,903,679	128,643,393	114,726,284	113,159,967	101,083,921	103,383,137	90,818,270

1: Water from White Plains Treatment Plant

Sources : Lands, Mines & Energy; Commerce & Industry; Forestry Development Authority (FDA); Liberia Produce Marketing Corporation (LPMC) and Liberia Water & Sewer Corporation (LWSC), Monrovia, Liberia

**REAL SECTOR**

CENTRAL BANK OF LIBERIA

**2.4b: Key Output Value - 2011**

*Liberian dollars*

Commodity	Unit	Jan-11	Feb-11	Mar-11	Apr-11	May-11	Jun-11	Jan-Jun Total
<b>Agriculture</b>								
Rubber <sup>3</sup>	Mt.	1,065,111,275.00	1,896,180,510.00	61,564,658.00	2,717,956,750	1,771,401,160.10	49,214,088.00	7,561,428,440.70
Cocoa Beans	Mt.	366,596,250.00	31,080,400.00	673,242,648.00	599,892,510	956,034,365.00	150,419,940.00	2,777,266,113.00
Coffee	Mt.	-	-	-	-	-	-	-
Round Logs <sup>3</sup>	M <sup>3</sup>	11,149,677.00	4,983,559.00	4,441,356.00	9,823,248	1,029,964	NA	31,427,804.02
Sawn Timber	Pcs.	1,184,418.00	1,801,507.00	2,092,482.00	1,853,066	2,178,073	NA	9,109,546.00
Fish <sup>4</sup>	Kg.	-	-	-	-	-	-	-
<b>Mining</b>								
Gold	Ounces	88,911,020.00	84,379,293.00	96,911,491.00	127,497,677	132,079,568.69	133,975,029.41	663,754,078.98
Diamond	Carat	248463206*	58,668,536.00	108,304,038.00	14,167,692	107,521,670.35	178,383,748.09	715,508,890.92
Iron Ore	Mt.	-	-	-	-	-	-	-
<b>Manufacturing</b>								
Cement	Mt.	30,725,355.00	42,078,669.00	31,667,149.00	86,662,697	38,097,554.44	115,008,418.80	344,239,843.28
Spirit	Litre	4,138,250.00	3,705,400.00	3,269,100.00	3,606,975	13,646,525.00	3,646,225.00	32,012,475.00
Beer	Litre	71,932,605.00	97,483,495.00	104,318,560.00	117,647,025	117,513,585.00	126,937,865.00	635,833,135.00
Stout	Litre	54,666,800.00	76,229,520.00	84,276,400.00	82,007,040	77,135,440.00	94,446,720.00	468,761,920.00
Malta	Litre	9,695,880.00	10,536,300.00	10,728,810.00	8,375,220	8,375,220.00	17,252,415.00	64,963,845.00
Soft Drink	Litre	67,338,000.00	70,391,160.00	78,547,650.00	77,154,630	77,154,630.00	69,559,810.00	440,145,880.00
Oil Paint	Gal.	2,465,580.00	3,274,457.00	3,106,542.00	2,727,846	3,269,299.00	1,637,130.00	16,480,854.00
Water Paint	Gal.	6,239,067.00	10,099,197.00	9,062,984.00	11,324,665	6,468,282.70	7,159,474.85	50,353,670.80
Varnish	Gal.	616,395.00	818,614.00	776,635.00	681,962	817,324.75	409,282.50	4,120,212.75
Manoline Hair Grease	Kg.	502,425.00	517,597.08	391,822.20	426,967.20	406,668.90	57,499,200.00	59,744,680.38
Thinner	Gal.	1,660,250.00	2,405,478.00	2,301,065.00	2,470,875	1,754,258.00	1,996,500.00	12,588,426.00
Rubbing Alcohol	Litre	309,031.00	219,551.00	420,426.00	705,538	497,673.00	705,538.14	2,857,757.28
Soap	Kg.	4,625,790.00	3,406,195.00	3,461,636.00	2,804,758	3,322,542.91	5,019,382.50	22,640,304.01
Chlorox	Litre	2,041,056.00	1,986,616.00	1,915,378.00	3,296,021	3,922,470.15	2,437,726.50	15,599,268.11
Nail	Kg.	-	-	-	-	-	-	-
Candle	Kg.	7,850,300.00	10,061,376.00	6,735,456.00	8,729,970	8,094,958.30	7,260,726.00	48,732,786.06
Mattresses	Pcs.	21,366,882.00	25,265,446.00	33,301,257.00	23,213,839	43,104,473.54	32,057,134.76	178,309,031.93
Finished Water <sup>2</sup>	Gal.	30,312,436.00	27,821,676.00	19,605,862.00	29,384,082	28,323,348.90	27,002,300.08	162,449,704.89

1. Water from White Plains Treatment Plant.

2. Represents Export values

3. Represents quantity sold, not quantity produced

NB: Production data are collected quarterly.

Sources : Lands, Mines & Energy; Commerce & Industry; Forestry Development Authority (FDA);

Liberia Produce Marketing Corporation (LPMC) and Liberia Water & Sewer Corporation (LWSC), Monrovia, Liberia

**REAL SECTOR**

CENTRAL BANK OF LIBERIA

**2.4b: Key Output Value - 2011 (continued)**  
Liberian dollars

Commodity	Unit	Jul-11	Aug-11	Sep-11	Oct-11	Nov-11	Dec-11	Jul-Dec Total	Grand Total
<b>Agriculture</b>									
Rubber <sup>3</sup>	Mt.	22,167,717.00	2,362,569,402.00	157,407,583.00	2,606,476,023.00	107,693,632.00	1,314,658,280.00	6,570,972,637.00	14,132,401,077.70
Cocoa Beans <sup>4</sup>	Mt.	184,831,500.00	152,814,825.00	362,922,800.00	194,640,825.00	182,580,000.00	#####	12,109,514,225.00	14,886,780,338.00
Coffee <sup>4</sup>	Mt.	na	3,915,540.00	na	na	na	na	na	na
Round Logs <sup>3</sup>	M <sup>3</sup>	30,890,447	16,837,343	480,269	4,474,359.00	11,080,608.00	4,568,490.00	68,331,516.00	99,759,320.02
Sawn Timber <sup>4</sup>	Pcs.	1,296,188	937,076	536,794,176	397,305.84	462,822.40	375,474.60	540,263,042.37	549,372,588.37
Fish <sup>4</sup>	Kg.	-	-	-	-	-	-	-	-
<b>Mining<sup>4</sup></b>									
Gold	Ounces	84,632,239.00	125,316,738.00	101,456,129.00	40,617,896.00	114,004,594.00	111,919,850.00	577,947,446.00	1,241,701,524.98
Diamond	Carat	121,113,483.00	101,656,244.00	58,956,492.00	73,614,279.00	15,606,057.00	27,872,640.00	398,819,195.00	1,114,328,085.92
Iron Ore	Mt.	-	-	-	222,817,298.00	547,158,608.00	428,241,009.00	1,198,216,915.00	1,198,216,915.00
<b>Manufacturing<sup>4</sup></b>									
Cement	Mt.	89,827,308.00	115,034,360.00	76,733,341.00	79,644,929.00	122,489,248.00	138,141,838.00	621,871,024.00	966,110,867.28
Spirit	Litre	3,645,100.00	3,699,850.00	3,733,000.00	3,925,950.00	3,672,100.00	4,384,550.00	23,060,550.00	55,073,025.00
Beer	Litre	120,269,310.00	114,823,415.00	85,820,350.00	91,705,850.00	90,237,940.00	130,473,655.00	633,330,520.00	1,269,163,655.00
Stout	Litre	93,904,080.00	93,920,800.00	78,777,040.00	81,020,560.00	96,846,800.00	115,033,600.00	559,502,880.00	1,028,264,800.00
Malta	Litre	-	26,569,485.00	7,390,935.00	4,263,165.00	8,821,305.00	8,665,020.00	55,709,910.00	120,673,755.00
Soft Drink	Litre	55,982,720.00	4,988,360.00	47,782,460.00	58,727,865.00	71,940,975.00	114,346,860.00	353,769,240.00	793,915,120.00
Oil Paint	Gal.	3,445,332.00	1,196,415.00	2,077,346.00	1,709,659.00	3,831,674.00	3,623,833.00	15,884,259.00	32,365,113.00
Water Paint	Gal.	10,693,640.00	9,529,083.00	7,210,162.00	9,278,060.00	11,296,690.00	14,954,751.00	62,962,386.00	113,316,056.80
Varnish	Gal.	861,333.00	299,104.00	519,336.00	427,415.00	957,919.00	905,958.00	3,971,065.00	8,091,277.75
Manoline Hair Grease	Kg.	432,669.60	378,067.14	356,796.00	262,412.70	567,072.00	451,001.10	2,448,018.54	62,192,698.92
Thinner	Gal.	1,141,767.00	685,945.00	392,476.00	1,709,659.00	3,831,674.00	3,623,833.00	11,385,354.00	23,973,780.00
Rubbing Alcohol	Litre	177,365.00	155,897.00	390,097.00	216,870.00	329,360.00	-	1,269,589.00	4,127,346.28
Soap	Kg.	5,734,693.00	3,682,602.00	3,711,147.00	1,645,754.00	2,314,470.00	2,807,068.00	19,895,734.00	42,536,038.01
Chlorox	Litre	1,857,602.00	1,827,252.00	1,772,808.00	1,977,056.00	869,582.00	691,607.00	8,995,907.00	24,595,175.11
Nail	Kg.	-	-	-	-	-	-	-	-
Candle	Kg.	6,923,442.00	6,791,287.00	4,048,013.00	6,988,737.00	6,210,613.00	5,831,005.00	36,793,097.00	85,525,883.06
Mattresses	Pcs.	33,035,646.00	23,710,416.00	31,075,742.00	39,099,391.00	31,228,107.00	49,327,914.00	207,477,216.00	385,786,247.93
Finished Water <sup>2</sup>	Gal.	-	-	-	-	-	-	-	162,449,704.89

1. Water from White Plains Treatment Plant.
2. Represents Export values
3. Represents quantity sold, not quantity produced

Sources : Lands, Mines & Energy; Commerce & Industry; Forestry Development Authority (FDA);  
Liberia Produce Marketing Corporation (LPMC) and Liberia Water & Sewer Corporation (LWSC), Monrovia, Liberia



**REAL SECTOR**

CENTRAL BANK OF LIBERIA

**2.4c: Key Output Value - 2012**

*Liberian dollars*

Commodity	Unit	Jan-12	Feb-12	Mar-12	Apr-12	May-12	Jun-12	Jan-Jun Total
<b>Agriculture</b>								
Rubber <sup>3*</sup>	Mt.	1,065,111,275.00	1,896,180,510.00	61,564,658.00	37,756,280.00	101,535,862.00	2,866,908,433.00	6,029,057,018.00
Cocoa Beans <sup>4</sup>	Mt.	237,937,960.00	225,828,750.00	177,216,075.00	51,701,266.00	52,491,935.00	28,836,978.00	774,012,964.00
Coffee <sup>4</sup>	Mt.	-	-	-	1,704,960.00	4,349,611.00	-	6,054,571.00
Round Logs <sup>3</sup>	M <sup>3</sup>	37,919,136	12,989,519	14,927,001	43,798,978	34,897,865	24,914,487	169,446,986.00
Sawn Timber <sup>4</sup>	Pcs.	1,090,664	2,314,759	316,229	1,226,294	773,154	627,419	6,348,519.00
Fish <sup>4</sup>	Kg.	-	-	-	-	-	-	-
<b>Mining<sup>4</sup></b>								
Gold	Ounces	148,130,831.39	141,694,387.07	147,852,704.67	196,146,216.70	103,992,597.00	210,497,371.65	948,314,108.48
Diamond	Carat	97,685,779.00	91,286,863.00	101,742,265.00	46,508,412.00	123,701,605.00	35,364,662.00	496,289,586.00
Iron Ore	Mt.	434,280,894.00	1,387,589,595.00	1,781,412,055.00	1,591,656,380.00	810,413,148.00	-	6,005,352,072.00
<b>Manufacturing<sup>4</sup></b>								
Cement	Mt.	129,055,682.75	177,885,699.60	152,273,974.27	167,590,760.00	140,871,834.50	120,224,931.60	887,902,882.72
Spirit	Litre	3,707,600.00	3,635,550.00	3,106,850.00	3,965,500.00	4,210,500.00	4,092,050.00	22,718,050.00
Beer	Litre	86,691,900.00	87,757,855.00	127,923,825.00	100,996,780.00	121,386,860.00	113,017,640.00	637,774,860.00
Stout	Litre	46,382,800.00	68,254,080.00	87,324,000.00	79,233,460.00	95,026,700.00	95,232,540.00	471,453,580.00
Malta	Litre	-	8,923,770.00	15,395,625.00	8,834,840.00	10,232,025.00	8,771,280.00	52,157,540.00
Soft Drink	Litre	81,335,050.00	75,935,665.00	91,342,450.00	76,793,790.00	83,798,530.00	75,549,320.00	484,754,805.00
Oil Paint	Gal.	4,549,624.64	3,205,702.50	3,076,898.00	3,981,274.00	2,727,568.69	1,797,323.22	19,338,391.05
Water Paint	Gal.	13,068,321.34	9,177,173.25	9,257,517.48	12,304,276.00	11,026,391.71	8,164,816.44	62,998,496.22
Varnish	Gal.	1,137,406.16	801,425.63	769,224.50	995,318.50	681,892.17	449,330.81	4,834,597.76
Manoline Hair Grease	Kg.	959,262.60	364,560.00	718,801.65	642,320.00	884,525.79	573,726.30	4,143,196.34
Thinner	Gal.	1,399,699.400	1,188,495.00	708,496.250	1,174,602.00	1,533,073.190	757,817.28	6,762,183.12
Rubbing Alcohol	Litre	110,291.50	201,757.50	206,292.03	203,500.00	402,833.31	530,253.03	1,654,927.37
Soap	Kg.	3,333,264.35	2,791,530.00	2,361,022.35	3,089,278.00	3,225,474.86	2,052,988.35	16,853,557.90
Chlorox	Litre	1,759,741.90	1,872,780.00	1,338,965.90	1,705,145.00	2,054,157.81	2,921,282.88	11,652,073.49
Nail	Kg.	-	-	-	-	-	-	-
Candle	Kg.	6,760,049.00	4,771,620.00	5,604,665.00	5,431,230.00	4,765,251.00	5,258,717.00	32,591,532.00
Mattresses	Pcs.	36,071,804.55	31,976,488.11	35,735,872.90	31,074,957.64	32,458,295.83	27,632,873.44	194,950,292.47
Finished Water <sup>2*</sup>	Gal.	7,192,564.00	15,477,653.52	14,160,055.37	12,984,330.08	12,147,596.11	12,264,629.83	74,226,829.00

1. Water from White Plains Treatment Plant.
2. Represents Export values
3. Represents quantity sold, not quantity produced

\* Estimates

Sources : Lands, Mines & Energy; Commerce & Industry; Forestry Development Authority (FDA); Liberia Produce Marketing Corporation (LPMC) and Liberia Water & Sewer Corporation (LWSC), Monrovia, Liberia

**REAL SECTOR**

CENTRAL BANK OF LIBERIA

**2.4c: Key Output Value - 2012 (contd.) 2013**

Liberian dollars

Commodity	Unit	Jul-12	Aug-12	Sep-12	Oct-12	Nov-12	Dec-12	Jan-13	Feb-13
<b>Agriculture</b>									
Rubber <sup>3</sup>	Mt.	90,331,605.00	64,355,190.00	1,831,682,439.60	1,277,726,125.20	631,637,244.00	1,655,170,650.00	82,705,030.40	203,438,640.00
Cocoa Beans <sup>4</sup>	Mt.	13,693,680.00	20,983,229.31	17,491,219.20	36,009,534.96	83,385,747.00	87,362,500.00	74,363,903.00	34,994,960.00
Coffee <sup>4</sup>	Mt.	-	-	-	-	-	-	-	-
Round Logs <sup>3</sup>	M <sup>3</sup>	22,769,993	20,492,994.00	18,853,554	30,478,894.00	28,063,713	30,018,406.00	-	-
Sawn Timber <sup>4</sup>	Pcs.	573,415	516,073.00	474,787	508,426.00	592,226	480,488.00	1,232,038	681,435.11
Fish <sup>4</sup>	Kg.	-	-	-	-	-	-	-	-
<b>Mining<sup>4</sup></b>									
Gold	Ounces	193,541,705.53	102,320,507.68	174,692,606.67	169,783,960.75	139,038,329.00	200,258,741.00	163,927,102.89	169,703,590.23
Diamond	Carat	107,334,851.83	50,653,347.01	103,424,184.58	43,386,843.20	53,558,347.00	56,462,473.00	141,762,384.02	72,452,097.81
Iron Ore	Mt.	93,243,068,100.00	1,142,396,905.70	272,971,093.20	na	132,920,493.00	145,298,700.00	1,450,426,602.00	1,869,203,212.00
<b>Manufacturing<sup>4</sup></b>									
Cement	Mt.	112,479,354.00	92,373,843.42	55,075,637.76	93,578,874.26	122,364,912.00	112,687,040.00	115,526,703.36	45,553,770.00
Spirit	Litre	4,103,650.00	3,441,300.00	2,783,050.00	na	2,835,525.00	3,302,075.00	2,721,350.00	2,114,025.00
Beer	Litre	128,266,225.00	81,880,230.00	67,607,355.00	82,444,780.00	107,547,790.00	181,586,550.00	92,232,780.00	116,695,215.00
Stout	Litre	107,795,420.00	73,511,440.00	84,406,020.00	87,357,500.00	106,733,020.00	154,298,660.00	91,817,920.00	103,926,580.00
Malta	Litre	9,800,725.00	7,601,095.00	5,998,475.00	6,832,700.00	8,455,750.00	15,665,270.00	8,667,995.00	8,663,200.00
Soft Drink	Litre	65,048,140.00	48,490,570.00	49,521,440.00	58,532,280.00	67,244,840.00	99,538,160.00	82,480,120.00	76,013,800.00
Oil Paint	Gal.	3,844,011.60	4,781,626.85	4,025,341.32	4,485,662.94	6,210,971.00	6,312,213.00	8,941,486.65	3,835,464.88
Water Paint	Gal.	10,247,125.98	11,507,409.60	9,315,459.97	10,201,080.22	14,991,637.00	14,657,970.00	5,957,470.60	3,359,056.00
Varnish	Gal.	961,002.90	1,195,406.71	1,006,335.33	1,121,415.74	1,552,743.00	1,578,053.00	1,494,694.62	966,525.75
Manoline Hair Grease	Kg.	783,311.10	756,359.08	525,044.000	na	501,704.000	692,230.00	653,437.000	602,780.00
Thinner	Gal.	1,300,899.600	1,489,054.38	727,481.04	1,397,459.58	708,713.00	1,525,618.00	743,593.84	745,745.00
Rubbing Alcohol	Litre	594,096.75	511,343.42	440,616.54	na	57,222.00	1,348,246.00	301,077.00	191,540.00
Soap	Kg.	2,647,689.33	2,808,236.63	4,169,855.04	na	476,128.00	411,438.00	17,919,262.00	4,384,474.00
Chlorox	Litre	2,137,785.00	1,896,042.00	2,748,766.80	na	804,432.00	1,348,246.00	2,277,468.00	1,431,369.00
Nail	Kg.	-	-	-	-	-	-	na	na
Candle	Kg.	8,071,713.00	6,613,512.08	8,448,810.24	na	3,861,040.00	3,132,000.00	3,848,287.00	2,300,560.00
Mattresses	Pcs.	25,763,488.88	23,493,971.07	29,416,402.66	28,103,687.52	24,734,017.00	49,275,870.00	33,223,514.65	27,125,753.96
Finished Water <sup>2</sup>	Gal.	na	na	12,289,751.76	13,820,819.76	13,478,887.75	15,634,019.00	16,896,605.76	17,620,218.50

1. Water from White Plains Treatment Plant.
2. Represents Export values
3. Represents quantity sold, not quantity produced

\* Estimates

Sources : Lands, Mines & Energy; Commerce & Industry; Forestry Development Authority (FDA); Liberia Produce Marketing Corporation (LPMC) and Liberia Water & Sewer Corporation (LWSC), Monrovia, Liberia

## GOVERNMENT FINANCE

CENTRAL BANK OF LIBERIA

3.1: Government Revenue 2012  
Millions of Liberian Dollars

REVENUE SOURCES	2012						2013
	Jan-Feb	Mar-Apr	May-Jun	Jul-Aug	Sep-Oct	Nov-Dec	Jan-Feb
<b>A. Tax Revenue</b>	<b>4,603.28</b>	<b>5,229.90</b>	<b>5,596.82</b>	<b>4,641.78</b>	<b>4,596.41</b>	<b>4,263.25</b>	<b>4,476.37</b>
<i>International Trade Taxes</i>	<i>1,782.41</i>	<i>1,836.40</i>	<i>2,187.12</i>	<i>1,929.15</i>	<i>1,803.50</i>	<i>1,763.18</i>	<i>1,613.25</i>
<i>Taxes &amp; Duties on Imports</i>	1,702.98	1,769.00	2,136.89	1,925.29	1,798.44	1,755.10	1,607.08
<i>Taxes on Exports</i>	79.43	67.50	50.23	3.86	5.06	8.08	6.17
<i>Taxes on Income &amp; Profits</i>	<i>1,461.14</i>	<i>2,207.80</i>	<i>2,126.38</i>	<i>1,769.45</i>	<i>2,158.18</i>	<i>1,421.04</i>	<i>2,159.02</i>
<i>Individual Taxes on income &amp; profits</i>	683.25	701.50	694.75	1,769.45	-	-	1,664.93
<i>Taxes Payable by Corporate Entities</i>	776.59	1,486.30	1,430.19	-	-	-	494.10
<i>Others</i>	1.31	20.00	1.44	-	2,158.18	1,421.04	-
<i>Sale Taxes on Goods &amp; Services</i>	<i>771.14</i>	<i>818.80</i>	<i>1,017.44</i>	<i>674.83</i>	<i>606.89</i>	<i>1,033.25</i>	<i>608.77</i>
<i>Goods &amp; Service Tax</i>	222.38	252.40	304.70	434.92	306.80	312.34	381.88
<i>Excise Taxes</i>	143.47	129.90	150.91	25.14	34.13	24.22	22.30
<i>Maritime Revenue</i>	100.03	69.20	325.52	214.77	92.39	600.49	155.41
<i>Others</i>	305.25	367.20	236.30	-	173.58	96.20	49.19
<i>Property &amp; Real Estate Taxes</i>	<i>24.23</i>	<i>27.90</i>	<i>39.18</i>	<i>57.60</i>	<i>22.99</i>	<i>21.82</i>	<i>47.00</i>
<i>Other Tax Revenue</i> <sup>1</sup>	<i>564.36</i>	<i>339.00</i>	<i>226.71</i>	<i>210.75</i>	<i>4.84</i>	<i>23.97</i>	<i>48.32</i>
<b>B. Non-Tax Revenue</b>	<b>2,438.24</b>	<b>304.80</b>	<b>624.40</b>	<b>339.54</b>	<b>879.15</b>	<b>3,317.10</b>	<b>1,921.61</b>
Charges & Other Administrative Fees	495.30	304.80	115.52	79.68	396.96	143.75	221.51
Grants	1,942.94	-	115.90	-	-	1,089.00	955.77
Others	-	-	392.98	259.87	482.19	-	744.34
<i>Contingent Revenue</i>	-	-	-	-	-	2,084.34	40.29
<i>Borrowing</i>	-	-	-	-	-	-	-
<i>Revenue Carry Forward</i>	-	-	-	-	-	-	-
<b>Grand Total Revenue (A + B)</b>	<b>7,041.52</b>	<b>5,534.70</b>	<b>6,221.22</b>	<b>4,981.32</b>	<b>5,475.56</b>	<b>7,580.35</b>	<b>6,397.97</b>

## 3.2: Government Expenditure

Expenditure By Sectors	2012			2013
	Fourth Edition	Fifth Edition	Sixth Edition	First Edition
PUBLIC ADMINISTRATIVE SERVICES SECTOR	640.15	1,552.91	3,022.58	1,400.03
MUNICIPAL GOVERNMENT	69.77	85.27	319.56	205.38
TRANSPARENCY AND ACCOUNTABILITY	125.05	86.57	294.81	241.32
SECURITY AND THE RULE OF LAW	486.94	780.02	986.54	1,110.28
HEALTH	87.59	451.21	815.66	848.53
SOCIAL DEVELOPMENT SERVICES	31.65	66.83	114.90	115.89
EDUCATION	306.15	1,020.52	977.67	907.34
ENERGY AND ENVIRONMENT	46.46	159.09	590.93	145.19
AGRICULTURE	15.04	79.11	117.94	74.28
INFRASTRUCTURE AND BASIC SERVICES SECTOR	38.66	139.06	299.14	214.89
INDUSTRY AND COMMERCE SECTOR	186.26	251.42	238.59	186.55
NATIONAL CLAIMS	-	-	-	589.36
CENTRAL BANK OF LIBERIA	65.28	64.23	64.14	64.33
<b>TOTAL</b>	<b>2,099.00</b>	<b>4,736.23</b>	<b>7,842.44</b>	<b>6,103.37</b>

\*Revised

Source : Ministry of Finance, Monrovia, Liberia

**GOVERNMENT FINANCE**

CENTRAL BANK OF LIBERIA

**3.2: Summary Estimates of Liberia's Public Debt Profile and Status  
as at End Feb, 2013**

*(In Millions US\$)*

External Debt	Current	Percentage Distribution
<b>Multilateral</b>	<b>142.1</b>	<b>24.9</b>
<b>Bilateral</b>	<b>132.0</b>	<b>23.1</b>
O/W	-	
Paris Club	-	
Non-Paris Club	-	
<b>Commercial Creditors</b>	<b>-</b>	<b>-</b>
<b>Total External Debt</b>	<b>274.1</b>	
Suppliers' Credit	1.9	
Salary & Allowances	5.0	
Financial Institutions	288.2	
Pre NTGL Salary Arrears	-	
Others	1.3	
<b>Total Domestic Debt</b>	<b>296.4</b>	<b>52.0</b>
<b>Total Stock of Public Debt</b>	<b>570.5</b>	<b>100.0</b>

Source : Ministry of Finance, Monrovia, Liberia

## EXTERNAL TRADE

## 4.1: Exports and Imports 2010- 2012

(Millions of United States Dollars)

Period	2011		2012		2013		Balance of Trade		
	Exports	Imports	Exports	Imports	Exports	Imports	2011	2012	2013
Jan	25.2	30.0	41.0	70.0	26.4	171.5	(4.8)	(29.00)	(145.1)
Feb	31.7	53.4	36.1	56.0	39.4	48.7	(21.7)	(19.90)	(9.3)
Mar	13.4	88.3	83.5	70.7			(74.9)	12.80	-
Apr	43.3	73.0	34.6	87.6			(29.7)	(53.00)	-
May	30.9	109.8	24.7	109.0			(78.9)	(84.30)	-
Jun	16.4	91.9	48.0	119.4			(75.5)	(71.40)	-
Jul	36.1	110.9	31.0	30.1			(74.8)	0.90	-
Aug	43.1	97.6	36.8	78.4			(54.5)	(41.60)	-
Sep	10.8	72.1	46.3	93.5			(61.3)	(47.20)	-
Oct	45.8	104.6*	31.1	87.5			(58.8)	(56.40)	-
Nov	32.2	102.5	32.5	86.2			(70.3)	(53.70)	-
Dec	29.0	110.1	13.9	116.3			(81.1)	(102.40)	-
<b>Total</b>	<b>351.9</b>	<b>939.7</b>	<b>459.5</b>	<b>1,004.7</b>	<b>65.8</b>	<b>220.2</b>	<b>(686.4)</b>	<b>(545.2)</b>	<b>(154.4)</b>

## 4.2a: Commodity Composition of Exports-2011

(Thousands of United States Dollars)

Commodity	Jan	Feb	Mar	Apr	May	Jun	Jan-Jun Total
Rubber	14,691.2	26,233.82	855.54	37,812.42	24,436.49	1,042.52	105,071.98
Cocoa beans	1,514.1	692.30	1,862.85	1,712.30	1,512.80	1,100.93	8,395.28
Coffee	0.0	-	-	-	100.00	-	100.00
Round Logs	3,106.0	563.20	5,402.44	843.98	560.21	4,003.06	14,478.89
Iron Ore	0.0	-	450.00	-	-	5,054.45	5,504.45
Gold	1,226.4	1,167.39	1,346.74	1,773.76	1,822.04	1,845.39	9,181.68
Diamond	3,427.1	811.68	1,505.06	197.10	1,483.26	2,457.08	9,881.26
Other Commodities	1,284.8	2,213.79	1,956.73	944.63	1,014.96	933.78	8,348.65
<b>Total</b>	<b>25,249.5</b>	<b>31,682.18</b>	<b>13,379.36</b>	<b>43,284.19</b>	<b>30,929.76</b>	<b>16,437.21</b>	<b>160,962.19</b>

Commodity	Jul	Aug	Sep	Oct	Nov	Dec	Jul-Dec Total	Grand Total
Rubber	30,426.5	32,582.67	2,183.8	36,055.83	1,504.1	18,276.91	121,029.82	226,101.80
Cocoa beans	1,534.4	1,628.60	827.3	825.90	204.0	917.80	5,937.95	14,333.23
Coffee	-	-	-	-	-	-	-	100.00
Round Logs	238.5	1,684.22	2,255.8	239.06	2,420.3	-	6,837.78	21,316.67
Iron Ore	-	0.00	-	3,082.27	7,641.88	5,953.58	16,677.73	22,182.18
Diamond	1,161.89	1,728.27	1,407.55	1,018.32	1,555.96	1,592.24	8,464.23	17,645.91
Gold	1,662.7	1,401.96	817.9	561.87	218.0	387.50	5,049.95	14,931.21
Other Commodities	1,128.7	4,045.29	3,323.7	4,041.85	18,691.7	1,879.94	33,111.11	41,459.76
<b>Total</b>	<b>36,152.6</b>	<b>43,071.0</b>	<b>10,816.0</b>	<b>45,825.1</b>	<b>32,235.9</b>	<b>29,008.0</b>	<b>197,108.57</b>	<b>358,070.76</b>

\*Revised

Source: Ministry of Commerce &amp; Industry and Ministry of Lands, Mines and Energy, Monrovia, Liberia

## EXTERNAL TRADE

CENTRAL BANK OF LIBERIA

**4.2b: Commodity Composition of Exports - 2012***(Thousands of United States Dollars)*

Commodity	Jan	Feb	Mar	Apr	May	Jun	Jan-Jun Total
Rubber	18,606.1	6,705.1	35,245.0	510.22	1,355.8	37,952.19	100,374.44
Cocoa beans	1,662.1	112.0	798.4	720.30	108.0	614.07	4,014.90
Coffee	-	-	52.50	30.00	-	-	82.50
Round Logs	4,576.8	3,782.7	852.3	7,482.24	4,508.7	3,854.59	25,057.33
Iron Ore	5,955.6	18,878.8	24,200.7	21,508.87	10,821.4	-	81,365.28
Gold	2,031.4	1,927.8	2,054.7	2,650.62	1,388.6	2,786.57	12,839.67
Diamond	1,339.6	1,242.0	1,382.2	628.49	1,651.8	468.16	6,712.24
Other Commodities	6,744.4	3,283.1	18,927.7	1,104.38	4,909.9	2,329.96	37,299.45
<b>Total</b>	<b>40,915.9</b>	<b>35,931.5</b>	<b>83,513.6</b>	<b>34,635.1</b>	<b>24,744.2</b>	<b>48,005.5</b>	<b>267,745.81</b>

Commodity	Jul	Aug	Sep	Oct	Nov*	Dec*	Jul-Dec Total	Grand Total
Rubber	<b>1,219.05</b>	<b>875.70</b>	<b>24,982.04</b>	<b>17,731.41</b>	<b>8,742.38</b>	<b>635.99</b>	54,186.57	154,561.01
Cocoa beans	-	81.25	-	776.57	805.33	875.73	2,538.88	6,553.78
Coffee	-	-	-	-	-	-	-	82.50
Round Logs	8,387.94	63.93	752.17	2,194.01	8,751.92	3,150.22	23,300.19	48,357.52
Iron Ore	12,583.41	15,544.93	3,723.01	-	1,839.73	2,004.12	35,695.21	117,060.49
Gold	2,611.90	1,392.31	2,382.61	2,356.15	1,924.41	2,762.19	13,429.55	26,269.22
Diamond	1,448.51	689.25	3,548.35	602.09	741.29	778.79	7,808.30	14,520.54
Other Commodities	4,777.4	18,113.5	10,958.1	7,471.1	9,651.33	3,685.85	54,657.14	91,956.59
<b>Total</b>	<b>31,028.2</b>	<b>36,760.8</b>	<b>46,346.3</b>	<b>31,131.3</b>	<b>32,456.4</b>	<b>13,892.9</b>	<b>191,615.83</b>	<b>459,361.64</b>

**4.2c: Commodity Composition of Exports-2013***(Thousands of United States Dollars)*

Commodity	Jan	Feb
Rubber	<b>1,118.24</b>	<b>2,730.72</b>
Cocoa beans	274.50	40.00
Coffee	-	32.50
Round Logs	366.27	250.00
Iron Ore	19,610.96	25,089.98
Gold	2,216.43	2,277.90
Diamond	1,916.74	972.51
Other Commodities	911.5	11,219.3
<b>Total</b>	<b>26,414.6</b>	<b>42,612.9</b>

\*Revised

Source: Ministry of Commerce &amp; Industry and Ministry of Lands, Mines and Energy, Monrovia, Liberia

## EXTERNAL TRADE

CENTRAL BANK OF LIBERIA

4.3a: Commodity Composition of Imports - 2011  
Thousands of United States Dollars

Commodity	Jan	Feb	Mar	Apr	May	Jun	Total
<b>Food and Live Animals</b>	7,185.99	26,009.04	37,988.98	17,443.76	23,913.05	11,468.15	124,008.97
O/w Commercial Rice	180.22	15,510.49	3,411.43	12,112.84	13,774.77	897.42	45,887.17
O/w Non-Commercial Rice	209.92	1,479.36	2.77	3.18	168.39	858.58	2,722.20
Beverage and Tobacco	854.02	1,893.26	1,443.04	751.94	1,262.57	1,723.57	7,928.40
Crude Materials	458.02	230.49	484.32	310.97	550.12	407.64	2,441.56
Mineral, Fuels, Lubricants	1,497.45	835.60	5,388.30	358.83	27,162.86	494.68	35,737.73
Animal and Vegetable Oil	314.66	710.49	57.78	66.57	530.65	469.76	2,149.91
Chemicals and Related Products	2,207.81	3,255.05	1,102.49	2,303.96	4,807.43	4,198.33	17,875.07
Manufactured Products	5,321.05	5,966.53	6,929.35	10,844.53	8,040.81	5,819.29	42,921.56
Machinery & Transport Equipment	6,911.49	5,931.02	11,318.43	27,850.18	14,425.47	19,919.55	86,356.14
Petroleum Products	2,015.27	6,471.25	16,963.77	11,482.88	26,529.40	38,816.22	102,278.79
Miscellaneous Articles <sup>1</sup>	3,260.92	2,081.35	6,664.52	1,619.32	2,548.17	8,622.09	24,796.38
<b>Total</b>	<b>30,026.68</b>	<b>53,384.08</b>	<b>88,340.99</b>	<b>73,032.95</b>	<b>109,770.53</b>	<b>91,939.28</b>	<b>446,494.50</b>

Commodity	Jul	Aug	Sep	Oct	Nov	Dec	Jul-Dec Total	Grand Total
<b>Food and Live Animals</b>	27,005.41	24,984.34	31,462.00	42,966.26	28,970.89	26,745.82	182,134.72	306,143.69
O/w Commercial Rice	7,969.99	12,218.34	7,330.15	27,746.91	14,245.91	3,187.48	72,698.78	118,585.95
O/w Non-Commercial Rice	-	5.23	-	1.11	469.71	17.05	493.10	3,215.30
Beverage and Tobacco	2,373.99	2,415.04	2,539.57	2,751.71	776.09	1,659.42	12,515.82	20,444.22
Crude Materials	403.08	511.40	934.99	347.07	483.30	306.08	2,985.92	5,427.48
Mineral, Fuels, Lubricants	6,597.11	8,945.42	1,091.51	721.50	2,260.00	6,685.27	26,300.81	62,038.54
Animal and Vegetable Oil	1,322.06	1,320.55	20.99	227.35	673.05	5,801.90	9,365.90	11,515.81
Chemicals and Related Products	2,965.08	3,401.08	4,009.14	3,326.19	1,861.80	2,005.74	17,569.03	35,444.10
Manufactured Products	11,447.14	8,786.35	9,835.74	10,919.25	4,405.53	5,771.09	51,165.10	94,086.66
Machinery & Transport Equipment	31,764.45	29,045.14	6,931.20	28,795.95	29,584.91	38,119.09	164,240.74	250,596.88
Petroleum Products	23,589.03	16,046.61	12,930.03	11,029.09	29,870.51	21,393.46	114,858.73	217,137.52
Miscellaneous Articles <sup>1</sup>	3,479.28	2,128.50	2,300.66	3,464.27	3,652.36	1,627.67	16,652.74	41,449.12
<b>Total</b>	<b>110,946.63</b>	<b>97,584.43</b>	<b>72,055.83</b>	<b>104,548.64</b>	<b>102,538.44</b>	<b>110,115.54</b>	<b>597,789.51</b>	<b>1,044,284.01</b>

Sources: Ministry of Commerce &amp; Industry and Ministry of Finance, Monrovia, Liberia.

## EXTERNAL TRADE

**4.3b: Commodity Composition of Imports - 2012**  
Thousands of United States Dollars

CENTRAL BANK OF LIBERIA

2012

Commodity	Jan	Feb	Mar	Apr	May	Jun	Jan-Jun Total
<b>Food and Live Animals</b>	11,161.11	11,322.30	18,199.64	11,465.93	12,349.19	11,183.50	75,681.67
O/w Commercial Rice	8,495.91	1,328.25	5,002.55	2,428.73	8,926.38	275.37	26,457.19
O/w Non-Commercial Rice	10.84	11.15	-	-	-	-	21.99
Beverage and Tobacco	1,067.23	1,699.04	885.52	1,952.21	2,105.47	2,399.31	10,108.78
Crude Materials	454.32	365.41	763.25	192.69	605.24	724.29	3,105.20
Mineral, Fuels, Lubricants	730.14	630.24	2,480.78	2,516.43	1,063.64	7,819.45	15,240.68
Animal and Vegetable Oil	297.67	286.52	621.82	657.27	6,450.13	7,419.08	15,732.49
Chemicals and Related Products	4,431.81	2,199.62	6,855.67	3,563.24	3,965.37	7,420.47	28,436.18
Manufactured Products	7,382.42	6,967.32	8,949.99	7,090.50	19,548.87	20,606.12	70,545.22
Machinery & Transport Equipment	11,422.18	18,065.89	12,513.86	33,374.74	26,170.71	23,775.07	125,322.45
Petroleum Products	30,329.00	12,701.67	15,196.81	24,449.34	33,838.43	33,648.01	150,163.26
Miscellaneous Articles <sup>1</sup>	2,704.22	1,734.71	4,209.71	2,368.59	2,454.16	4,407.72	17,879.11
<b>Total</b>	<b>69,980.10</b>	<b>55,972.72</b>	<b>70,677.05</b>	<b>87,630.95</b>	<b>108,551.21</b>	<b>119,403.02</b>	<b>512,215.04</b>

Commodity	Jul	Aug	Sep	Oct	Nov	Dec	Jul-Dec Total	Grand Total
<b>Food and Live Animals</b>	13,330.45	9,772.43	16,221.14	24,621.95	28,970.89	26,745.82	119,662.68	195,344.35
O/w Commercial Rice	4,796.24	4,437.81	1,438.25	1,932.83	24,871.89	4,515.09	41,992.12	68,449.31
O/w Non-Commercial Rice	0.78	19.91	1.25	165.58	8.06	1.55	197.13	219.12
Beverage and Tobacco	2,228.21	3,726.59	944.98	2,002.58	776.09	1,659.42	11,337.85	21,446.63
Crude Materials	942.01	475.27	346.51	623.06	483.30	306.08	3,176.22	6,281.42
Mineral, Fuels, Lubricants	8,205.64	5,222.49	3,587.81	9,982.23	2,260.00	6,685.27	35,943.45	51,184.13
Animal and Vegetable Oil	60.30	803.99	6,713.79	1,542.71	673.05	5,801.90	15,595.74	31,328.23
Chemicals and Related Products	5,982.63	3,088.59	3,976.71	2,683.59	1,861.80	2,005.74	19,599.06	48,035.24
Manufactured Products	9,858.46	11,106.50	8,460.91	5,259.35	4,405.53	5,771.09	44,861.84	115,407.06
Machinery & Transport Equipment	23,430.80	31,563.02	39,861.89	22,692.10	29,870.51	38,119.09	185,537.40	310,859.85
Petroleum Products	25,570.97	11,124.51	12,023.48	17,226.40	13,293.58	27,530.20	106,769.15	256,932.41
Miscellaneous Articles <sup>1</sup>	1,841.40	1,528.03	1,315.22	916.34	3,652.36	1,627.67	10,881.02	28,760.13
<b>Total</b>	<b>30,133.99</b>	<b>78,411.42</b>	<b>93,452.43</b>	<b>87,550.31</b>	<b>86,247.11</b>	<b>116,252.27</b>	<b>553,364.41</b>	<b>1,065,579.45</b>

**4.3c: Commodity Composition of Imports -2013**

Commodity	Jan	Feb
<b>Food and Live Animals</b>	24,989.34	2,074.64
O/w Commercial Rice	6,907.09	358.68
O/w Non-Commercial Rice	5.38	8.52
Beverage and Tobacco	1,458.56	1,536.77
Crude Materials	562.26	347.38
Mineral, Fuels, Lubricants	11,131.38	3,492.70
Animal and Vegetable Oil	160.45	2,303.43
Chemicals and Related Products	3,752.85	5,530.75
Manufactured Products	15,260.78	3,250.59
Machinery & Transport Equipment	67,826.75	15,402.22
Petroleum Products	32,915.60	13,555.71
Miscellaneous Articles <sup>1</sup>	13,489.03	1,157.60
<b>Total</b>	<b>171,547.01</b>	<b>48,651.78</b>

Sources: Ministry of Commerce &amp; Industry and Ministry of Finance, Monrovia, Liberia



## EXTERNAL TRADE

CENTRAL BANK OF LIBERIA

**4.4: Volume of Imports of Petroleum Products-2011- 2013**  
(Volume in gals.)

2011	Premium	Diesel	Kerosene	Jet fuel	Total
Jan	-	738,076	-	-	738,076
Feb	1,480,000	1,110,000	-	-	2,590,000
Mar	2,670,593	3,168,005	-	1,097,681.22	6,936,279
Apr	4,182,856.29	-	-	-	4,182,856.29
May	4,709,021.08	5,578,676.11	-	1,294,841.64	11,582,538.83
June	7,978,638.56	4,645,656.73	-	727,492.52	13,351,787.81
Jul	2,669,547.41	5,430,753.81	-	-	8,100,301.22
Aug	1,681,442.80	3,705,720.20	-	435,926.60	5,823,089.60
Sep	-	4,267,713.20	-	405,520.00	4,673,233.20
Oct	2,093,830.00	603,793,751.84	-	138,857,417.60	744,744,999.44
Nov	5,253,796.50	5,055,657.80	-	398,334.60	10,707,788.90
Dec	1,280,967.38	24,809,573.00	-	797,453.60	26,887,993.98
<b>Total</b>	<b>34,000,693</b>	<b>662,303,583</b>	<b>0</b>	<b>144,014,668</b>	<b>840,318,944</b>
2012	Premium	Diesel	Kerosene	Jet fuel	Total
Jan	4,197,923.80	5,832,689.93	-	-	10,030,614
Feb	2,873,980.92	623,194.65	-	811,920.60	4,309,096
Mar	-	4,141,208.96	-	4,225,444.40	8,366,653
Apr	2,608,858.90	4,671,053.51	-	-	7,279,912
May	6,437,519.00	3,249,521.32	-	413,767.30	10,100,808
Jun	3,678,517.80	5,827,876.17	-	1,151,932.10	10,658,326
Jul	3,930,384.20	5,907,152.78	-	371,036.00	10,208,573
Aug	2,174,860.00	7,651,975.00	-	602,744.80	10,429,580
Sep	-	3,675,066.30	-	409,094.20	4,084,161
Oct	2,606,250.40	2,567,766.42	-	-	5,174,017
Nov	2,236,609.30	1,531,583.09	-	406,215.60	4,174,407.99
Dec	2,051,716.60	6,346,696.96	-	-	8,398,413.56
<b>Total</b>	<b>32,796,620.92</b>	<b>52,025,785.09</b>	<b>-</b>	<b>8,392,155.00</b>	<b>93,214,561.01</b>
2013	Premium	Diesel	Kerosene	Jet fuel	Total
Jan	5,201,593.20	4,603,290.01	-	882,709.00	10,687,592
Feb	3,662,600.40	772,995.30	-	-	4,435,596

Source: Ministry of Commerce &amp; Industry and Central Bank of Liberia