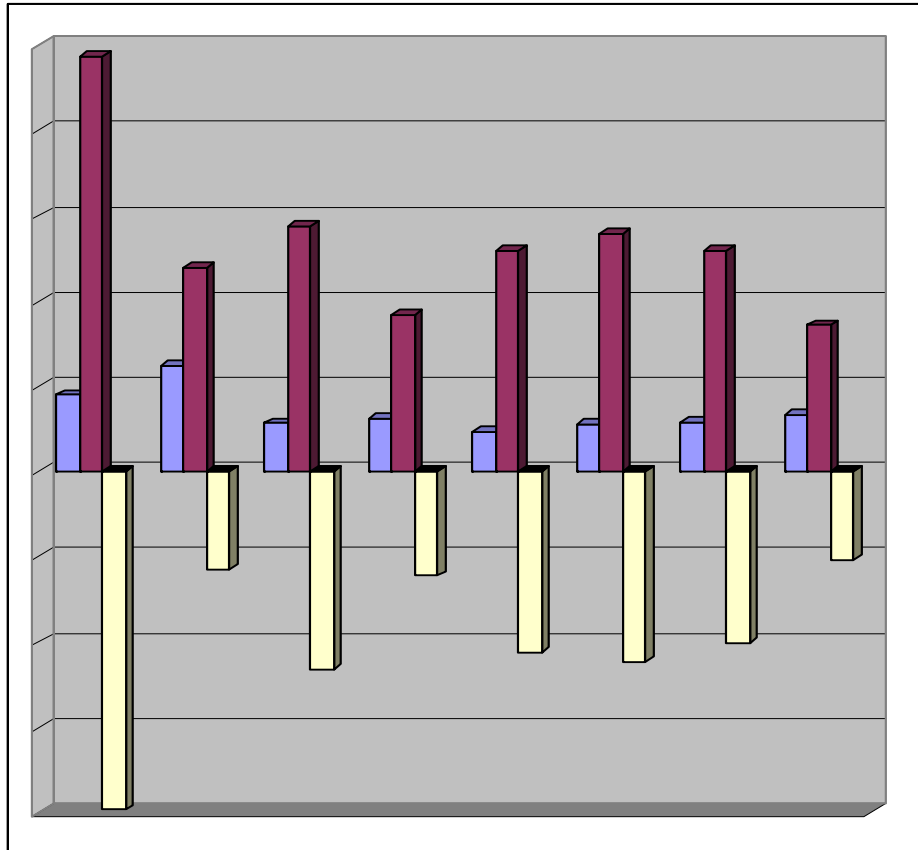




CENTRAL BANK OF LIBERIA



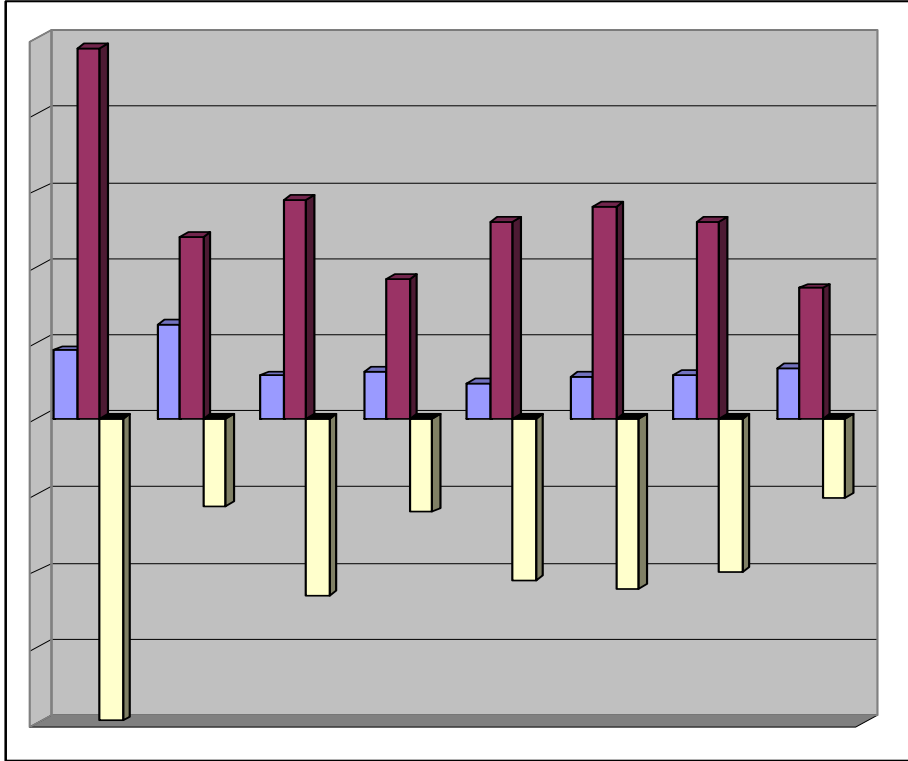
Liberia Financial STATISTICS

**Vol. 11, No.4
July – August, 2009**

Research, Policy and Planning Department
Monrovia, Liberia



CENTRAL BANK OF LIBERIA



Liberia Financial STATISTICS

THE LIBERIA FINANCIAL STATISTICS (LFS) is produced by the Bank's Research, Policy and Planning Department. Inquiries concerning this publication should be addressed to:

**The Director
Research, Policy and Planning Department
Central Bank of Liberia
Warren and Carey Streets
P. O. Box 2048
Monrovia, Liberia**

Telephone #s: 00(231) 6515440/6516418/6553456

Fax #s: 00(231) 077059642

Swift :CBLRRLM

Table of Contents

INTRODUCTION		-ii-
	Statistics	1 - 54
1	MONEY AND BANKING	1 - 30
1.1a	Depository Corporations Survey – 2007	1 - 2
1.1b	Depository Corporations Survey – 2008	3 - 4
1.1c	Depository Corporations Survey – 2009	5
1.2a	Sectoral Balance Sheet of Other Depository Corp. – 2007	6 - 7
1.2b	Sectoral Balance Sheet of Other Depository Corp. – 2008	8 - 9
1.2c	Sectoral Balance Sheet of Other Depository Corp. – 2009	10
1.3a	Sectoral Balance Sheet of Central Bank of Liberia – 2007	11 - 12
1.3b	Sectoral Balance Sheet of Central Bank of Liberia – 2008	13 - 14
1.3c	Sectoral Balance Sheet of Central Bank of Liberia – 2009	15
1.4a	Commercial Banks’ Loans by Economic Sectors – 2007	16 - 17
1.4b	Commercial Banks’ Loans by Economic Sectors – 2008	18 - 19
1.4c	Commercial Banks’ Loans by Economic Sectors – 2009	20
1.5	Commercial Banks’ Interest Rate – 2007-2009	21
1.6	Liberian Dollar Exchange Rates – Period Averages – 2007-2009	22 - 23
1.7	Liberian Dollar Exchange Rates – End of Period – 2007-2009	24
1.8	Liberian Dollar Exchange Rates – Jul-Aug, 2009	25
1.9	Commercial Banks’ Inflows and Outflows – 2007-2009	26
1.10a	Central Bank of Liberia FX Auction – 2007	27
1.10b	Central Bank of Liberia FX Auction – 2008	28 - 29
1.10c	Central Bank of Liberia FX Auction – 2009	30
2	REAL SECTOR	31 - 46
2.1a	Harmonized Consumer Price Index – 2007	31
2.1b	Harmonized Consumer Price Index – 2008	32
2.1c	Harmonized Consumer Price Index – 2009	33
2.2a	HCPI Inflation Rates – 2007	34
2.2b	HCPI Inflation Rates – 2008	35
2.2c	HCPI Inflation Rates – 2009	36
2.3a	Key Output Volume – 2007	37 - 38
2.3b	Key Output Volume – 2008	39 - 40
2.3c	Key Output Volume – 2009	41
2.4a	Key Output Value – 2007	42 - 43
2.4b	Key Output Value – 2008	44 - 45
2.4c	Key Output Value – 2009	46
3	GOVERNMENT FINANCE	47 - 48
3.1	Government Revenue – 2007-2009	47
3.2	Government Expenditure – 2007-2009	47
3.3	Functional Classification of Government Expenditure – 2007-2009	48
3.4	Summary Estimates of Liberia’s Public Debt Stock and Status as at End August, 2009	48
4	EXTERNAL TRADE	49 - 54
4.1a	Exports and Imports – 2007-2009	49
4.2a	Commodity Composition of Exports – 2007	49
4.2b	Commodity Composition of Exports – 2008	50
4.2c	Commodity Composition of Exports – 2009	50
4.3a	Commodity Composition of Imports – 2007	51
4.3b	Commodity Composition of Imports – 2008	52
4.3c	Commodity Composition of Imports – 2009	53
4.4	Volume of Imports of Petroleum Products – 2007-2009	54

Introduction

The Liberia Financial Statistics (LFS), since its introduction in 1999, remains one of the most important sources of statistical information that the Central Bank of Liberia continues to provide for use by researchers, students, investors, etc.

This is the fourth edition for this year, covering the period January, 2007 to August, 2009 and contains data collected and compiled from the four major sectors of the Liberian economy including: monetary, real, fiscal and external. The cover of this edition shows movement in merchandise trade balance from January to August 2009.

The Central Bank of Liberia continues to be grateful to its many data providers in both the private and public sectors whose cooperation and hard work have resulted into the continuous publication of this document. It is the Bank's ardent hope that this smooth working relationship continues as we strive for a better economic environment.

MONEY AND BANKING

CENTRAL BANK OF LIBERIA

1.1a: Depository Corporations Survey-2007

Millions of Liberian Dollars

	Jan-07	Feb-07	Mar-07	Apr-07	May-07	Jun-07
Foreign Assets (net)	(44,668.1)	(44,318.1)	(43,875.6)	(48,938.9)	(48,549.6)	(48,559.4)
Foreign Assets (MA)	5,020.9	5,070.5	5,576.2	6,128.5	6,545.7	6,163.8
(-) Foreign Liabilities (MA)	51,429.9	51,506.1	51,549.0	57,178.3	57,290.5	57,389.2
Foreign Assets (CoB)	2,975.3	3,223.5	3,013.5	3,630.0	3,027.5	3,594.5
(-) Foreign Liabilities (CoB)	1,234.4	1,106.0	916.3	1,519.0	832.3	928.6
Domestic Credit	68,641.1	68,391.3	68,266.7	73,616.0	74,547.9	74,875.1
Claims on General Government (net)	65,635.7	65,402.0	65,144.1	70,437.9	71,239.6	71,581.4
Claims on General Government (MA)	67,153.6	67,072.8	67,203.4	72,867.9	73,503.5	73,631.2
(-) General Government Deposits (MA)	2,285.4	2,396.7	2,808.7	3,205.0	3,067.9	2,802.3
Claims on General Government (CoB)	841.7	833.8	830.8	850.0	869.3	868.9
(-) General Government Deposits (CoB)	74.2	107.9	81.4	74.9	65.4	116.4
Claims on Public Corporations (MA)	0.6	0.6	0.6	0.6	0.6	0.6
Claims on Public Corporations (CoB)	94.2	65.1	151.5	163.3	121.1	135.2
Claims on Private Sector (MA)	144.2	121.1	121.3	120.7	50.6	49.7
Claims on Private Sector (CoB)	2,761.4	2,794.2	2,842.4	2,874.4	3,132.2	3,099.6
Claims on NBFIs (MA)	0.0	0.0	0.0	0.0	0.0	0.0
Claims on NBFIs (CoB)	5.1	8.4	6.8	19.1	3.8	8.7
Money	8,897.3	9,440.1	9,472.5	9,589.0	10,005.3	10,422.6
Currency Outside Banks (MA)	2,560.1	2,538.2	2,544.0	2,547.6	2,567.1	2,476.8
Liberian Currency in Circulation (MA)	2,793.4	2,792.0	2,814.6	2,819.5	2,862.6	2,830.1
(-) Currency Holdings (CoB)	233.3	253.8	270.5	271.9	295.5	353.3
Demand Deposits	4,292.5	4,820.8	4,881.4	4,843.7	5,036.1	5,435.9
Demand Deposits (MA)	45.1	45.7	40.7	41.5	104.3	404.8
Demand Deposits (CoB)	4,247.5	4,775.0	4,840.8	4,802.2	4,931.8	5,031.1
Other Deposits	2,044.7	2,081.1	2,047.1	2,197.6	2,402.1	2,510.0
Other Deposits (MA)	19.9	19.7	19.7	19.7	20.3	20.3
Time and Savings Deposits (CoB)	2,024.8	2,061.4	2,027.4	2,177.9	2,381.8	2,489.7
Bonds and Securities (CoB)	0.0	0.0	0.0	0.0	0.0	0.0
Restricted Deposits	48.9	48.9	48.8	48.8	48.8	48.7
Capital Accounts	15,712.9	15,540.1	15,738.4	16,075.0	16,647.1	16,726.4
Capital Accounts (MA)	13,550.2	13,405.0	13,334.3	13,569.8	14,062.7	14,150.1
Capital Accounts (CoB)	2,162.7	2,135.1	2,404.1	2,505.1	2,584.4	2,576.3
Other Items (net)	(686.1)	(955.9)	(868.6)	(1,034.6)	(702.9)	(882.0)
Unclassified Liabilities (MA)	8,537.8	8,521.8	8,531.3	9,448.6	9,297.0	9,270.6
(-) Unclassified Assets (MA)	8,454.6	8,480.1	8,320.7	9,174.4	9,238.6	9,258.3
(-) Unclassified Assets (CoB)	963.9	1,256.5	1,011.8	1,373.7	1,227.0	1,238.4
Unclassified Liabilities (CoB)	1,145.7	1,172.6	1,060.5	1,259.0	1,383.5	1,412.5
Commercial Banks' Deposits (MA)	2,162.3	2,095.1	2,399.4	2,084.2	2,702.8	2,447.1
(-) Reserves (CoB)	2,458.4	2,396.2	2,696.4	2,647.6	2,994.5	2,843.3
Currency Holdings (CoB)	233.3	253.8	270.5	271.9	295.5	353.3
Liabilities to Central Bank (CoB)	1.0	0.0	3.4	0.0	2.7	0.0
(-) Claims on Domestic Banks (MA)	62.8	49.3	284.0	83.2	46.5	41.5
(-) Claims on Central Bank of Liberia (CoB)	820.5	810.6	810.6	810.2	836.4	795.8
(-) Unbalanced Items	(6.0)	(6.5)	(10.2)	(10.2)	(41.3)	(188.2)
Vertical Check	(0.0)	0.0	(0.0)	0.0	0.0	(0.0)

NBFIs: Non-Bank Financial Institutions

Source: Central Bank of Liberia, Monrovia, Liberia.

MONEY AND BANKING

CENTRAL BANK OF LIBERIA

1.1a: Depository Corporations Survey-2007- continued

Millions of Liberian Dollars

	Jul-07	Aug-07	Sept-07	Oct-07	Nov-07	Dec-07
Foreign Assets (net)	(48,659.1)	(48,543.1)	(48,223.4)	(47,828.2)	(48,269.2)	(47,319.5)
Foreign Assets (MA)	6,308.4	6,411.1	6,482.7	6,868.1	6,972.5	7,456.9
(-) Foreign Liabilities (MA)	57,489.6	57,593.2	57,681.3	57,776.2	57,852.3	57,967.5
Foreign Assets (CoB)	3,589.4	3,524.3	3,869.1	3,953.8	3,706.0	4,019.7
(-) Foreign Liabilities (CoB)	1,067.3	885.2	893.8	873.9	1,095.3	828.6
Domestic Credit	74,969.5	75,326.6	75,479.4	75,518.4	75,562.6	76,462.3
Claims on General Government (net)	71,396.5	71,339.6	71,485.2	71,256.6	70,092.3	71,746.2
Claims on General Government (MA)	73,631.4	73,876.3	73,733.0	73,792.7	73,374.4	74,201.7
(-) General Government Deposits (MA)	2,964.1	3,081.4	3,036.3	3,214.4	3,193.5	2,975.1
Claims on General Government (CoB)	863.8	782.7	860.6	859.7	87.9	735.4
(-) General Government Deposits (CoB)	134.5	238.0	72.1	181.5	176.5	215.9
Claims on Public Corporations (MA)	0.0	0.0	0.0	0.0	0.0	0.0
Claims on Public Corporations (CoB)	187.7	167.7	138.4	186.4	77.9	131.8
Claims on Private Sector (MA)	42.3	30.2	29.7	28.3	30.0	133.0
Claims on Private Sector (CoB)	3,333.6	3,780.8	3,817.4	4,046.3	5,361.2	4,370.0
Claims on NBFIs (MA)	0.0	0.0	0.0	0.0	0.0	0.0
Claims on NBFIs (CoB)	9.3	8.3	8.7	0.8	1.3	81.3
Money	10,392.2	10,533.9	11,246.3	11,360.2	12,268.0	12,467.3
Currency Outside Banks (MA)	2,475.5	2,499.3	2,557.0	2,678.3	2,857.5	3,317.4
Liberian Currency in Circulation (MA)	2,852.9	2,862.5	2,953.0	3,020.6	3,102.4	3,594.4
(-) Currency Holdings (CoB)	377.4	363.2	396.0	342.3	244.8	276.9
Demand Deposits	5,400.9	5,460.9	6,114.1	5,779.0	6,332.1	6,031.9
Demand Deposits (MA)	378.9	388.6	412.5	432.8	404.3	490.2
Demand Deposits (CoB)	5,022.0	5,072.3	5,701.6	5,346.2	5,927.8	5,541.7
Other Deposits	2,515.8	2,573.7	2,575.2	2,902.9	3,078.4	3,118.0
Other Deposits (MA)	20.1	20.3	0.0	0.0	0.0	0.0
Time and Savings Deposits (CoB)	2,495.6	2,553.4	2,575.2	2,902.9	3,078.4	3,118.0
Bonds and Securities (CoB)	0.0	0.0	0.0	0.0	0.0	0.0
Restricted Deposits	48.7	48.7	48.1	48.8	48.0	48.0
Capital Accounts	18,615.8	18,764.2	18,568.5	18,819.9	18,237.0	19,027.7
Capital Accounts (MA)	15,611.3	15,745.0	15,513.4	15,542.0	15,035.5	15,619.8
Capital Accounts (CoB)	3,004.5	3,019.1	3,055.1	3,278.0	3,201.5	3,407.9
Other Items (net)	(2,746.2)	(2,563.2)	(2,606.9)	(2,538.8)	(3,259.5)	(2,400.2)
Unclassified Liabilities (MA)	7,709.3	7,715.1	7,697.9	7,698.1	7,668.1	7,725.7
(-) Unclassified Assets (MA)	9,267.3	9,254.2	9,245.6	9,242.4	9,237.3	9,027.4
(-) Unclassified Assets (CoB)	1,179.6	1,393.1	1,077.0	1,359.6	1,339.6	1,473.9
Unclassified Liabilities (CoB)	1,011.4	1,256.8	1,083.2	1,449.4	1,347.0	1,307.7
Commercial Banks' Deposits (MA)	2,433.5	2,368.0	2,391.4	2,488.7	2,551.9	2,684.5
(-) Reserves (CoB)	2,812.6	2,602.5	2,856.9	2,873.1	3,524.7	2,852.9
Currency Holdings (CoB)	377.4	363.2	396.0	342.3	244.8	276.9
Liabilities to Central Bank (CoB)	0.0	0.0	0.0	0.0	0.0	3.2
(-) Claims on Domestic Banks (MA)	51.6	37.0	17.6	53.8	17.6	56.6
(-) Claims on Central Bank of Liberia (CoB)	789.1	795.4	782.4	782.3	757.3	787.1
(-) Unbalanced Items	(177.6)	(184.1)	(196.0)	(206.1)	(194.9)	(200.3)
Vertical Check	(0.0)	(0.0)	(0.0)	(0.0)	0.0	0.0

NBFIs: Non-Bank Financial Institutions

Source: Central Bank of Liberia, Monrovia, Liberia.

MONEY AND BANKING

CENTRAL BANK OF LIBERIA

1.1b: Depository Corporations Survey-2008

Millions of Liberian Dollars

	Jan-08	Feb-08	Mar-08	Apr-08	May-08	Jun-08
Foreign Assets (net)	(43,952.6)	(43,401.5)	(44,650.0)	(43,321.5)	(44,049.5)	(44,503.2)
Foreign Assets (MA)	8,054.1	8,074.1	8,859.2	9,359.3	9,441.6	9,417.1
(-) Foreign Liabilities (MA)	55,480.8	55,426.9	57,425.8	57,011.4	57,358.9	57,814.4
Foreign Assets (CoB)	4,088.5	4,389.8	4,646.6	5,024.5	4,592.3	4,679.9
(-) Foreign Liabilities (CoB)	614.4	438.6	729.9	693.8	724.6	785.8
Domestic Credit	73,550.7	73,533.3	75,653.9	75,570.2	76,294.3	76,962.3
Claims on General Government (net)	68,582.9	68,269.2	70,236.2	69,848.4	70,322.4	71,126.3
Claims on General Government (MA)	71,693.3	71,382.8	73,406.9	73,108.6	73,576.8	74,030.4
(-) General Government Deposits (MA)	3,641.1	3,676.8	3,720.4	3,829.2	3,884.7	3,554.1
Claims on General Government (CoB)	749.2	737.4	737.3	741.6	746.0	746.0
(-) General Government Deposits (CoB)	218.6	174.2	187.6	172.6	115.7	96.0
Claims on Public Corporations (MA)	0.0	0.0	0.0	0.0	0.0	0.0
Claims on Public Corporations (CoB)	167.5	252.4	71.7	65.6	58.8	75.2
Claims on Private Sector (MA)	197.1	195.5	195.0	198.1	200.2	244.9
Claims on Private Sector (CoB)	4,584.5	4,800.2	5,149.7	5,457.8	5,712.5	5,514.9
Claims on NBFIs (MA)	0.0	0.0	0.0	0.0	0.0	0.0
Claims on NBFIs (CoB)	18.8	16.0	1.3	0.2	0.4	1.0
Money	13,109.4	14,014.9	14,016.9	14,643.6	14,856.5	14,552.6
Currency Outside Banks (MA)	3,013.2	2,968.4	2,953.6	2,961.1	2,916.4	2,905.3
Liberian Currency in Circulation (MA)	3,489.1	3,389.1	3,383.5	3,397.2	3,341.3	3,336.7
(-) Currency Holdings (CoB)	475.9	420.7	429.8	436.1	424.9	431.5
Demand Deposits	6,985.7	7,741.7	7,641.6	8,080.7	8,161.9	7,733.2
Demand Deposits (MA)	592.4	624.0	623.2	628.0	772.4	614.6
Demand Deposits (CoB)	6,393.3	7,117.8	7,018.4	7,452.7	7,389.5	7,118.6
Other Deposits	3,110.5	3,304.8	3,421.7	3,601.8	3,778.2	3,914.1
Other Deposits (MA)	0.0	0.0	0.0	0.0	0.0	0.0
Time and Savings Deposits (CoB)	3,110.5	3,304.8	3,421.7	3,601.8	3,778.2	3,914.1
Bonds and Securities (CoB)	0.0	0.0	0.0	0.0	0.0	0.0
Restricted Deposits	48.0	48.0	48.0	47.9	47.6	44.8
Capital Accounts	19,515.2	19,334.0	19,466.1	19,791.8	19,745.5	19,844.4
Capital Accounts (MA)	16,078.8	15,802.1	15,909.6	16,017.3	16,188.7	16,231.6
Capital Accounts (CoB)	3,436.5	3,531.9	3,556.5	3,774.5	3,556.8	3,612.7
Other Items (net)	(3,074.4)	(3,265.2)	(2,527.2)	(2,234.6)	(2,404.9)	(1,982.6)
Unclassified Liabilities (MA)	5,868.2	5,827.4	12,766.5	12,712.1	12,665.1	12,765.0
(-) Unclassified Assets (MA)	7,601.0	7,548.7	13,678.5	13,581.5	13,660.2	13,764.6
(-) Unclassified Assets (CoB)	1,922.0	1,792.9	1,931.0	1,587.8	1,615.9	1,595.2
Unclassified Liabilities (CoB)	1,719.3	1,395.3	1,330.9	1,330.3	1,412.9	1,674.2
Commercial Banks' Deposits (MA)	2,688.0	2,761.7	2,876.7	2,956.7	3,080.5	3,422.5
(-) Reserves (CoB)	3,191.9	3,203.6	3,347.3	3,384.8	3,482.1	3,816.9
Currency Holdings (CoB)	475.9	420.7	429.8	436.1	424.9	431.5
Liabilities to Central Bank (CoB)	0.0	0.1	399.4	0.0	0.0	0.0
(-) Claims on Domestic Banks (MA)	25.4	29.7	284.9	30.5	59.5	25.5
(-) Claims on Central Bank of Liberia (CoB)	799.4	799.4	788.7	792.5	798.7	798.3
(-) Unbalanced Items	(286.2)	(296.0)	(300.1)	(292.6)	(372.0)	(275.3)
Vertical Check	0.0	(0.0)	0.0	(0.0)	0.0	0.0

NBFIs: Non-Bank Financial Institutions

Source: Central Bank of Liberia, Monrovia, Liberia.

MONEY AND BANKING

CENTRAL BANK OF LIBERIA

1.1b: Depository Corporations Survey-2008 - continued

Millions of Liberian Dollars

	Jul-08	Aug-08	Sep-08	Oct-08	Nov-08	Dec-08
Foreign Assets (net)	(44,544.5)	(44,005.9)	(44,452.8)	(41,622.1)	(41,499.5)	(43,137.2)
Foreign Assets (MA)	9,617.5	9,783.2	9,324.7	10,118.4	9,779.7	10,294.9
(-) Foreign Liabilities (MA)	57,813.4	57,810.8	58,676.8	56,094.8	56,095.8	59,206.3
Foreign Assets (CoB)	4,387.9	4,852.4	5,704.5	5,246.3	5,670.5	6,385.6
(-) Foreign Liabilities (CoB)	736.4	830.7	805.3	892.0	853.9	611.4
Domestic Credit	76,783.5	76,656.7	75,044.0	72,867.9	73,451.9	76,953.0
Claims on General Government (net)	70,956.4	70,618.9	68,666.5	66,371.9	66,831.5	70,242.0
Claims on General Government (MA)	74,030.6	74,027.5	71,338.6	68,928.7	68,865.5	71,994.2
(-) General Government Deposits (MA)	3,737.5	3,927.3	3,176.4	3,049.8	2,536.9	2,243.9
Claims on General Government (CoB)	746.4	605.9	605.5	605.5	603.2	593.3
(-) General Government Deposits (CoB)	83.1	87.2	101.2	112.6	100.3	101.6
Claims on Public Corporations (MA)	0.0	0.0	0.0	0.0	0.0	0.0
Claims on Public Corporations (CoB)	66.5	55.7	62.1	62.7	59.9	64.4
Claims on Private Sector (MA)	30.7	31.8	31.6	31.5	31.5	113.0
Claims on Private Sector (CoB)	5,728.8	5,948.7	6,282.8	6,400.4	6,526.3	6,533.1
Claims on NBFIs (MA)	0.0	0.0	0.0	0.0	0.0	0.0
Claims on NBFIs (CoB)	1.2	1.5	0.9	1.3	2.7	0.5
Money	14,530.0	15,248.1	16,057.9	16,584.0	17,051.9	17,931.6
Currency Outside Banks (MA)	2,893.2	2,812.3	2,894.0	3,063.3	3,356.9	3,637.1
Liberian Currency in Circulation (MA)	3,409.7	3,335.9	3,358.7	3,433.7	3,767.6	4,090.0
(-) Currency Holdings (CoB)	516.5	523.6	464.7	370.3	410.7	452.9
Demand Deposits	7,614.9	8,260.3	9,259.9	9,455.1	9,432.1	10,111.3
Demand Deposits (MA)	607.9	592.9	668.6	639.6	909.5	1,000.6
Demand Deposits (CoB)	7,006.9	7,667.4	8,591.2	8,815.5	8,522.6	9,110.8
Other Deposits	4,021.9	4,175.5	3,904.0	4,065.5	4,262.9	4,183.2
Other Deposits (MA)	0.0	0.0	0.0	0.0	0.0	0.0
Time and Savings Deposits (CoB)	4,021.9	4,175.5	3,904.0	4,065.5	4,262.9	4,183.2
Bonds and Securities (CoB)	0.0	0.0	0.0	0.0	0.0	0.0
Restricted Deposits	47.2	47.2	46.7	46.7	47.3	47.3
Capital Accounts	20,268.6	20,147.3	20,070.5	20,046.5	20,042.6	20,296.7
Capital Accounts (MA)	16,241.8	16,247.1	16,156.4	16,059.7	15,921.5	16,213.8
Capital Accounts (CoB)	4,026.8	3,900.3	3,914.1	3,986.8	4,121.1	4,082.8
Other Items (net)	(2,606.7)	(2,791.9)	(5,583.9)	(5,431.4)	(5,189.5)	(4,459.7)
Unclassified Liabilities (MA)	12,779.5	12,777.1	8,680.6	8,334.6	8,313.5	9,304.6
(-) Unclassified Assets (MA)	13,974.3	13,978.9	13,343.7	12,768.2	12,704.6	13,188.7
(-) Unclassified Assets (CoB)	1,945.1	1,675.6	1,634.2	1,886.3	1,925.7	2,038.5
Unclassified Liabilities (CoB)	1,968.1	1,476.8	1,936.6	1,519.7	1,973.8	2,222.5
Commercial Banks' Deposits (MA)	3,369.6	3,426.6	3,662.2	4,553.3	4,361.5	3,999.1
(-) Reserves (CoB)	4,197.6	4,228.1	4,193.1	4,420.2	4,280.8	3,922.0
Currency Holdings (CoB)	516.5	523.6	464.7	370.3	410.7	452.9
Liabilities to Central Bank (CoB)	0.0	0.0	0.0	0.0	0.0	0.0
(-) Claims on Domestic Banks (MA)	37.8	38.8	42.9	28.7	100.7	78.5
(-) Claims on Central Bank of Liberia (CoB)	798.3	798.3	797.2	797.2	794.1	803.3
(-) Unbalanced Items	(287.5)	(276.1)	(316.9)	(308.7)	(443.1)	(407.7)
Vertical Check	0.0	0.0	0.0	0.0	(0.0)	(0.0)

NBFIs: Non-Bank Financial Institutions

Source: Central Bank of Liberia, Monrovia, Liberia.

MONEY AND BANKING

CENTRAL BANK OF LIBERIA

1.1c: Depository Corporations Survey-2009

Millions of Liberian Dollars

	Jan-09	Feb-09	Mar-09	Apr-09	May-09	Jun-09	Jul-09	Aug-09
Foreign Assets (net)	(42,273.0)	(40,607.7)	(42,250.6)	(42,482.9)	(47,736.6)	(46,699.3)	(47,335.7)	(47,609.2)
Foreign Assets (MA)	11,102.1	10,613.3	11,133.0	11,130.5	12,893.5	13,673.8	13,927.1	13,911.7
(-) Foreign Liabilities (MA)	58,346.4	56,859.4	58,819.5	59,899.0	66,377.2	66,554.9	67,548.0	68,490.7
Foreign Assets (CoB)	5,525.4	6,405.0	6,188.7	6,977.3	6,570.1	7,008.7	7,141.5	7,842.2
(-) Foreign Liabilities (CoB)	554.1	766.6	752.9	691.8	822.9	826.8	856.3	872.4
Domestic Credit	75,620.8	74,509.5	76,198.7	78,203.5	86,142.8	85,753.7	87,111.5	88,934.2
Claims on General Government (net)	68,722.7	67,303.5	69,032.2	70,622.3	77,619.6	76,961.1	78,171.8	79,278.2
Claims on General Government (MA)	71,316.8	69,930.0	71,774.6	72,958.6	80,027.8	80,194.0	81,425.1	82,487.9
(-) General Government Deposits (MA)	3,102.0	3,135.4	3,256.2	2,848.1	2,934.5	3,622.5	3,754.9	3,767.6
Claims on General Government (CoB)	594.4	594.4	603.6	596.2	632.1	525.2	625.3	664.5
(-) General Government Deposits (CoB)	86.5	85.5	89.8	84.5	105.7	135.6	123.7	106.6
Claims on Public Corporations (MA)	0.0	0.0	0.0	0.0	0.0	0.0	0.0	0.0
Claims on Public Corporations (CoB)	407.1	509.9	579.1	724.9	760.7	852.5	1,025.0	871.8
Claims on Private Sector (MA)	106.9	349.9	191.6	196.5	208.3	207.4	216.6	258.9
Claims on Private Sector (CoB)	6,382.3	6,345.4	6,395.1	6,659.1	7,553.4	7,731.9	7,698.1	8,524.5
Claims on NBFIs (MA)	0.0	0.0	0.0	0.0	0.0	0.0	0.0	0.0
Claims on NBFIs (CoB)	1.7	0.8	0.7	0.7	0.8	0.8	0.0	0.7
Money	17,727.5	18,310.8	18,651.1	19,920.4	21,363.3	21,059.1	21,488.9	23,463.2
Currency Outside Banks (MA)	3,165.2	3,159.7	3,210.5	3,142.0	3,176.4	3,249.6	3,343.1	3,234.8
Liberian Currency in Circulation (MA)	4,025.4	3,966.7	3,896.4	3,843.2	3,823.7	3,800.9	3,892.4	3,923.6
(-) Currency Holdings (CoB)	860.3	806.9	686.0	701.2	647.3	551.3	549.2	688.8
Demand Deposits	10,220.7	10,820.2	10,942.9	12,051.1	13,164.9	12,438.8	12,701.1	14,519.1
Demand Deposits (MA)	980.4	1,044.6	932.7	1,096.6	1,144.0	1,213.2	1,209.6	1,213.7
Demand Deposits (CoB)	9,240.3	9,775.6	10,010.3	10,954.5	12,020.9	11,225.7	11,491.5	13,305.4
Other Deposits	4,341.7	4,330.9	4,497.8	4,727.2	5,021.9	5,370.7	5,444.6	5,709.3
Other Deposits (MA)	0.0	0.0	0.0	0.0	0.0	0.0	0.0	0.0
Time and Savings Deposits (CoB)	4,341.7	4,330.9	4,497.8	4,727.2	5,021.9	5,370.7	5,444.6	5,709.3
Bonds and Securities (CoB)	0.0	0.0	0.0	0.0	0.0	0.0	0.0	0.0
Restricted Deposits	47.3	47.3	47.3	47.3	47.3	47.3	47.3	47.3
Capital Accounts	20,241.0	20,845.4	21,592.1	22,651.7	24,200.0	23,963.8	24,791.6	25,270.3
Capital Accounts (MA)	16,072.6	16,049.7	16,410.9	16,723.2	18,062.9	18,071.4	18,477.2	18,708.2
Capital Accounts (CoB)	4,168.4	4,795.7	5,181.2	5,928.6	6,137.2	5,892.4	6,314.4	6,562.2
Other Items (net)	(4,668.1)	(5,301.8)	(6,342.5)	(6,898.9)	(7,204.3)	(6,015.7)	(6,552.0)	(7,455.8)
Unclassified Liabilities (MA)	9,445.4	9,360.0	9,546.9	9,645.0	11,284.3	11,309.5	11,459.1	11,633.5
(-) Unclassified Assets (MA)	13,003.7	12,673.1	13,095.4	13,311.4	14,542.4	14,579.8	14,789.2	14,986.4
(-) Unclassified Assets (CoB)	2,274.7	2,940.6	3,191.8	2,961.0	3,352.9	3,361.5	3,239.5	3,610.2
Unclassified Liabilities (CoB)	2,194.2	2,596.8	2,015.3	1,375.0	1,058.4	1,840.1	1,692.0	1,155.3
Commercial Banks' Deposits (MA)	4,221.1	3,832.3	4,317.2	4,332.0	4,890.0	4,784.1	4,892.6	4,770.5
(-) Reserves (CoB)	4,618.6	4,774.1	4,794.9	5,036.6	5,441.9	4,955.1	5,322.5	5,317.4
Currency Holdings (CoB)	860.3	806.9	686.0	701.2	647.3	551.3	549.2	688.8
Liabilities to Central Bank (CoB)	0.0	0.0	0.0	0.0	0.0	0.0	0.0	0.0
(-) Claims on Domestic Banks (MA)	219.8	202.8	581.7	287.8	337.9	244.1	316.0	304.8
(-) Claims on Central Bank of Liberia (CoB)	809.5	809.5	821.9	834.2	883.7	884.1	899.1	908.4
(-) Unbalanced Items	(462.7)	(497.7)	(422.2)	(521.0)	(525.3)	(476.2)	(578.6)	(576.8)
Vertical Check	(0.0)	0.0	(0.0)	(0.0)	(0.0)	(0.0)	(0.0)	0.0

NBFIs: Non-Bank Financial Institutions

Source: Central Bank of Liberia, Monrovia, Liberia.

MONEY AND BANKING

CENTRAL BANK OF LIBERIA

1.2a: Sectoral Balance Sheet of Other Depository Corporations-2007

Thousands of Liberian Dollars

	Jan-07	Feb-07	Mar-07	Apr-07	May-07	Jun-07
Assets						
Reserves	2,458,424	2,396,151	2,696,376	2,647,611	2,994,494	2,843,346
<i>of which: Cash on Hand: Coins/LD Notes</i>	233,337	253,824	270,539	271,884	295,486	353,307
Foreign Assets	2,975,317	3,223,489	3,013,467	3,629,989	3,027,519	3,594,500
Claims on General Government	841,713	833,849	830,822	850,033	869,308	868,858
Claims on Public Corporations	94,169	65,099	151,539	163,266	121,126	135,189
Claims on Private Sector	2,761,368	2,794,165	2,842,357	2,874,394	3,132,225	3,099,599
Claims on Central Bank of Liberia	820,478	810,637	810,637	810,171	836,415	795,792
Claims on NBFIs	5,091	8,375	6,809	19,061	3,799	8,693
Unclassified Assets	963,874	1,256,474	1,011,815	1,373,729	1,226,968	1,238,383
Total Assets	10,920,435	11,388,237	11,363,823	12,368,255	12,211,853	12,584,360
	Jan-07	Feb-07	Mar-07	Apr-07	May-07	Jun-07
Liabilities						
Demand Deposits	4,247,474	4,775,046	4,840,760	4,802,171	4,931,761	5,031,103
Time and Savings Deposits	2,024,786	2,061,371	2,027,371	2,177,918	2,381,828	2,489,695
Restricted Deposits	30,156	30,156	30,020	30,016	30,016	29,905
Bonds and Securities	0	0	0	0	0	0
Foreign Liabilities	1,234,376	1,105,984	916,285	1,519,037	832,310	928,551
Government Deposits	74,180	107,944	81,424	74,935	65,398	116,353
Liabilities to Central Bank of Liberia	1,044	0	3,366	0	2,699	0
Capital Accounts	2,162,694	2,135,103	2,404,099	2,505,148	2,584,377	2,576,252
Unclassified Liabilities	1,145,725	1,172,633	1,060,499	1,259,031	1,383,464	1,412,501
Total Liabilities	10,920,435	11,388,237	11,363,823	12,368,255	12,211,853	12,584,360
Vertical Check (Assets/Liabilities)	0	0	0	0	0	0

NBFIs: Non-Bank Financial Institutions

Source : Central Bank of Liberia, Monrovia, Liberia.

MONEY AND BANKING

CENTRAL BANK OF LIBERIA

1.2a: Sectoral Balance Sheet of Other Depository Corporations-2007 - continued
Thousands of Liberian Dollars

	Jul-07	Aug-07	Sept-07	Oct-07	Nov-07	Dec-07
Assets						
Reserves	2,812,634	2,602,499	2,856,883	2,873,100	3,524,655	2,852,863
<i>of which: Cash on Hand: Coins/LD Notes</i>	377,377	363,210	395,990	342,276	244,836	276,933
Foreign Assets	3,589,352	3,524,310	3,869,077	3,953,783	3,705,962	4,019,679
Claims on General Government	863,843	870,502	860,570	859,731	87,870	735,444
Claims on Public Corporations	187,744	167,654	138,400	186,356	77,851	131,815
Claims on Private Sector	3,333,648	3,692,939	3,817,415	4,046,349	5,361,152	4,370,004
Claims on Central Bank of Liberia	789,141	795,381	782,377	782,303	757,342	787,074
Claims on NBFIs	9,283	8,315	8,703	814	1,285	81,332
Unclassified Assets	1,179,567	1,393,109	1,076,983	1,359,556	1,339,621	1,473,894
Total Assets	12,765,212	13,054,709	13,410,407	14,061,992	14,855,738	14,452,105
	Jul-07	Aug-07	Sept-07	Oct-07	Nov-07	Dec-07
Liabilities						
Demand Deposits	5,022,015	5,072,294	5,701,603	5,346,216	5,927,818	5,541,712
Time and Savings Deposits	2,495,629	2,553,404	2,575,154	2,902,937	3,078,420	3,117,965
Restricted Deposits	29,889	29,889	29,366	30,033	29,200	29,190
Bonds and Securities	0	0	0	0	0	0
Foreign Liabilities	1,067,256	885,221	893,849	873,937	1,095,325	828,562
Government Deposits	134,539	237,986	72,093	181,493	176,469	215,934
Liabilities to Central Bank of Liberia	0	0	0	0	0	3,188
Capital Accounts	3,004,533	3,019,149	3,055,106	3,277,977	3,201,481	3,407,862
Unclassified Liabilities	1,011,350	1,256,766	1,083,236	1,449,400	1,347,026	1,307,694
Total Liabilities	12,765,212	13,054,709	13,410,407	14,061,992	14,855,738	14,452,105
Vertical Check (Assets/Liabilities)	0	0	0	0	0	0

NBFIs: Non-Bank Financial Institutions
Source : Central Bank of Liberia, Monrovia, Liberia.

MONEY AND BANKING

CENTRAL BANK OF LIBERIA

1.2b: Sectoral Balance Sheet of Other Depository Corporations- 2008

Thousands of Liberian Dollars

	Jan-08	Feb-08	Mar-08	Apr-08	May-08	Jun-08
Assets						
Reserves	3,191,921	3,203,568	3,347,320	3,384,782	3,482,100	3,816,316
<i>of which: Cash on Hand: Coins/LD Notes</i>	475,915	420,680	429,828	436,107	424,921	431,466
Foreign Assets	4,088,460	4,389,815	4,646,555	5,024,479	4,592,347	4,679,861
Claims on General Government	749,244	737,380	737,326	741,620	745,967	745,967
Claims on Public Corporations	167,463	252,415	71,656	65,627	58,790	75,161
Claims on Private Sector	4,584,519	4,800,213	5,149,737	5,457,794	5,712,516	5,514,944
Claims on Central Bank of Liberia	799,432	799,432	788,681	792,508	798,686	798,296
Claims on NBFIs	18,850	15,994	1,297	180	356	1,006
Unclassified Assets	1,921,953	1,792,912	1,930,959	1,587,847	1,615,882	1,595,190
Total Assets	15,521,841	15,991,729	16,673,532	17,054,837	17,006,645	17,226,741
	Jan-08	Feb-08	Mar-08	Apr-08	May-08	Jun-08
Liabilities						
Demand Deposits	6,393,258	7,117,765	7,018,379	7,452,653	7,389,540	7,118,557
Time and Savings Deposits	3,110,529	3,304,777	3,421,656	3,601,835	3,778,246	3,914,100
Restricted Deposits	29,190	29,190	29,190	29,116	28,844	28,397
Bonds and Securities	0	0	0	0	0	0
Foreign Liabilities	614,415	438,568	729,901	693,833	724,570	785,769
Government Deposits	218,647	174,202	187,615	172,599	115,704	95,962
Liabilities to Central Bank of Liberia	0	65	399,392	0	0	0
Capital Accounts	3,436,456	3,531,892	3,556,504	3,774,492	3,556,829	3,610,120
Unclassified Liabilities	1,719,347	1,395,270	1,330,896	1,330,309	1,412,912	1,673,836
Total Liabilities	15,521,841	15,991,729	16,673,532	17,054,837	17,006,645	17,226,741
Vertical Check (Assets/Liabilities)	0	0	0	0	0	0

NBFIs: Non-Bank Financial Institutions

Source : Central Bank of Liberia, Monrovia, Liberia.

MONEY AND BANKING

CENTRAL BANK OF LIBERIA

1.2b: Sectoral Balance Sheet of Other Depository Corporations- 2008 - continued

Thousands of Liberian Dollars

	Jul-08	Aug-08	Sep-08	Oct-08	Nov-08	Dec-08
Assets						
Reserves	4,197,585	4,228,113	4,193,135	4,420,194	4,280,782	3,922,008
<i>of which: Cash on Hand: Coins/LD Notes</i>	516,466	523,563	464,688	370,337	410,746	452,871
Foreign Assets	4,387,918	4,852,380	5,704,500	5,246,343	5,670,480	6,385,613
Claims on General Government	746,375	605,873	605,546	605,546	603,162	593,312
Claims on Public Corporations	66,475	55,743	62,136	62,742	59,876	64,420
Claims on Private Sector	5,728,829	5,948,664	6,282,797	6,400,393	6,526,298	6,533,079
Claims on Central Bank of Liberia	798,296	798,296	797,168	797,168	794,079	803,347
Claims on NBFIs	1,159	1,511	894	1,316	2,714	482
Unclassified Assets	1,945,064	1,675,630	1,634,151	1,886,265	1,925,739	2,038,542
Total Assets	17,871,701	18,166,211	19,280,327	19,419,967	19,863,129	20,340,802
	Jul-08	Aug-08	Sep-08	Oct-08	Nov-08	Dec-08
Liabilities						
Demand Deposits	7,006,925	7,667,401	8,591,244	8,815,511	8,522,585	9,110,754
Time and Savings Deposits	4,021,882	4,175,494	3,903,994	4,065,550	4,262,918	4,183,154
Restricted Deposits	28,397	28,387	27,882	27,882	28,567	28,567
Bonds and Securities	0	0	0	0	0	0
Foreign Liabilities	736,400	830,720	805,272	892,018	853,898	611,401
Government Deposits	83,147	87,164	101,215	112,553	100,282	101,622
Liabilities to Central Bank of Liberia	0	0	0	0	0	0
Capital Accounts	4,026,836	3,900,255	3,914,090	3,986,795	4,121,086	4,082,806
Unclassified Liabilities	1,968,115	1,476,791	1,936,629	1,519,658	1,973,793	2,222,498
Total Liabilities	17,871,701	18,166,210	19,280,327	19,419,967	19,863,129	20,340,802
Vertical Check (Assets/Liabilities)	0	0	0	0	0	0

NBFIs: Non-Bank Financial Institutions

Source : Central Bank of Liberia, Monrovia, Liberia.

MONEY AND BANKING

CENTRAL BANK OF LIBERIA

1.2c: Sectoral Balance Sheet of Other Depository Corporations - 2009

Thousands of Liberian Dollars

	Jan-09	Feb-09	Mar-09	Apr-09	May-09	Jun-09	Jul-09	Aug-09
Assets								
Reserves	4,618,624	4,774,050	4,794,949	5,036,633	5,441,930	4,955,069	5,322,529	5,317,428
<i>of which: Cash on Hand: Coins/LD N</i>	860,251	806,918	685,965	701,183	647,295	551,335	549,223	688,822
Foreign Assets	5,525,388	6,405,024	6,188,737	6,977,315	6,570,066	7,008,690	7,141,504	7,842,188
Claims on General Government	594,394	594,394	603,610	596,200	632,062	525,226	625,331	664,528
Claims on Public Corporations	407,142	509,929	579,086	724,930	760,746	852,511	1,025,031	871,833
Claims on Private Sector	6,382,317	6,345,374	6,395,107	6,659,051	7,553,358	7,731,857	7,698,068	8,524,509
Claims on Central Bank of Liberia	809,525	809,525	821,883	834,240	883,669	884,092	899,115	908,383
Claims on NBFIs	1,703	786	666	703	825	793	44	726
Unclassified Assets	2,274,650	2,940,551	3,191,828	2,961,026	3,352,932	3,361,533	3,239,485	3,610,166
Total Assets	20,613,744	22,379,633	22,575,865	23,790,099	25,195,587	25,319,770	25,951,107	27,739,760
	Jan-09	Feb-09	Mar-09	Apr-09	May-09	Jun-09	Jul-09	Aug-09
Liabilities								
Demand Deposits	9,240,310	9,775,575	10,010,270	10,954,508	12,020,944	11,225,682	11,491,490	13,305,410
Time and Savings Deposits	4,341,663	4,330,897	4,497,753	4,727,228	5,021,926	5,370,652	5,444,640	5,709,325
Restricted Deposits	28,567	28,567	28,567	28,567	28,567	28,567	28,567	28,567
Bonds and Securities	0	0	0	0	0	0	0	0
Foreign Liabilities	554,118	766,604	752,900	691,768	822,903	826,777	856,294	872,384
Government Deposits	86,496	85,510	89,830	84,480	105,707	135,628	123,722	106,632
Liabilities to Central Bank of Liberia	0	0	0	0	0	0	0	0
Capital Accounts	4,168,405	4,795,685	5,181,219	5,928,553	6,137,165	5,892,384	6,314,382	6,562,152
Unclassified Liabilities	2,194,186	2,596,796	2,015,327	1,374,996	1,058,374	1,840,080	1,692,012	1,155,291
Total Liabilities	20,613,744	22,379,633	22,575,865	23,790,099	25,195,587	25,319,770	25,951,107	27,739,760
					0	0		
Vertical Check (Assets/Liabilities)	0	0	0	0	0	0	0	0

NBFIs: Non-Bank Financial Institutions

Source: Central Bank of Liberia, Monrovia, Liberia.

MONEY AND BANKING

CENTRAL BANK OF LIBERIA

1.3a: Sectoral Balance Sheet of Central Bank of Liberia -2007

Thousands of Liberian Dollars

	Jan-07	Feb-07	Mar-07	Apr-07	May-07	Jun-07
Assets						
Foreign Assets	5,020,926	5,070,528	5,576,208	6,128,469	6,545,719	6,163,764
Claims on General Government	67,153,609	67,072,755	67,203,361	72,867,896	73,503,549	73,631,169
Claims on Public Corporations	588	582	582	582	598	598
Claims on Private Sector	144,210	121,080	121,338	120,723	50,560	49,700
Claims on Domestic Banks	62,791	49,295	284,033	83,241	46,480	41,513
Claims on NBFIs	0	0	0	0	0	0
Unclassified Assets	8,454,636	8,480,112	8,320,721	9,174,413	9,238,628	9,258,264
Total Assets	80,836,760	80,794,352	81,506,243	88,375,324	89,385,533	89,145,008
	Jan-07	Feb-07	Mar-07	Apr-07	May-07	Jun-07
Liabilities						
Reserve Money	4,994,719	4,926,331	5,244,450	4,935,068	5,628,375	5,493,773
Other Deposits	19,921	19,714	19,714	19,714	20,264	20,264
Restricted Reserves	18,781	18,781	18,781	18,781	18,781	18,781
Foreign Liabilities	51,429,935	51,506,111	51,549,035	57,178,302	57,290,478	57,389,152
Liabilities to General Government	2,285,430	2,396,653	2,808,662	3,205,048	3,067,896	2,802,304
Capital Accounts	13,550,213	13,404,958	13,334,299	13,569,806	14,062,741	14,150,102
Unclassified Liabilities	8,537,762	8,521,803	8,531,300	9,448,604	9,296,998	9,270,632
Total Liabilities	80,836,760	80,794,352	81,506,243	88,375,324	89,385,534	89,145,008
Vertical Check (Assets/Liabilities)	(0)	(0)	(0)	(0)	(0)	(0)

NBFIs: Non-Bank Financial Institutions

Source : Central Bank of Liberia, Monrovia, Liberia.

MONEY AND BANKING

CENTRAL BANK OF LIBERIA

1.3a: Sectoral Balance Sheet of Central Bank of Liberia-2007 - continued

Thousands of Liberian Dollars

	Jul-07	Aug-07	Sept-07	Oct-07	Nov-07	Dec-07
Assets						
Foreign Assets	6,308,424	6,411,066	6,482,696	6,868,146	6,972,526	7,456,881
Claims on General Government	73,631,377	73,876,299	73,733,030	73,792,689	73,374,433	74,201,719
Claims on Public Corporations	0	0	0	0	0	0
Claims on Private Sector	42,304	30,166	29,683	28,290	30,012	132,996
Claims on Domestic Banks	51,559	36,989	17,566	53,812	17,586	56,643
Claims on NBFIs	0	0	0	0	0	0
Unclassified Assets	9,267,252	9,254,186	9,245,650	9,242,415	9,237,280	9,027,441
Total Assets	89,300,916	89,608,706	89,508,625	89,985,353	89,631,837	90,875,680
	Jul-07	Aug-07	Sept-07	Oct-07	Nov-07	Dec-07
Liabilities						
Reserve Money	5,487,687	5,435,021	5,560,925	5,735,937	5,863,630	6,568,769
Other Deposits	20,127	20,264	0	0	0	0
Restricted Reserves	18,781	18,781	18,781	18,781	18,781	18,781
Foreign Liabilities	57,489,590	57,593,211	57,681,325	57,776,207	57,852,320	57,967,541
Liabilities to General Government	2,964,145	3,081,356	3,036,342	3,214,357	3,193,523	2,975,058
Capital Accounts	15,611,260	15,745,011	15,513,378	15,541,968	15,035,475	15,619,824
Unclassified Liabilities	7,709,326	7,715,062	7,697,875	7,698,103	7,668,107	7,725,708
Total Liabilities	89,300,917	89,608,706	89,508,625	89,985,353	89,631,837	90,875,680
Vertical Check (Assets/Liabilities)	(0)	0	(0)	0	0	0

NBFIs: Non-Bank Financial Institutions

Source : Central Bank of Liberia, Monrovia, Liberia.

MONEY AND BANKING

CENTRAL BANK OF LIBERIA

1.3b: Sectoral Balance Sheet of Central Bank of Liberia - 2008

Thousands of Liberian Dollars

	Jan-08	Feb-08	Mar-08	Apr-08	May-08	Jun-08
Assets						
Foreign Assets	8,054,117	8,074,064	8,859,167	9,359,273	9,441,557	9,417,110
Claims on General Government	71,693,324	71,382,812	73,406,885	73,108,609	73,576,815	74,030,440
Claims on Public Corporations	0	0	0	0	0	0
Claims on Private Sector	197,059	195,478	194,959	198,141	200,201	244,875
Claims on Domestic Banks	25,371	29,704	284,879	30,549	59,502	25,513
Claims on NBFIs	0	0	0	0	0	0
Unclassified Assets	7,601,016	7,548,682	13,678,493	13,581,470	13,660,173	13,764,582
Total Assets	87,570,888	87,230,741	96,424,383	96,278,041	96,938,249	97,482,520
	Jan-08	Feb-08	Mar-08	Apr-08	May-08	Jun-08
Liabilities						
Reserve Money	6,483,333	6,478,768	6,583,254	6,689,276	6,822,197	7,098,584
Other Deposits	0	0	0	0	0	0
Restricted Reserves	18,781	18,781	18,781	18,781	18,781	18,781
Foreign Liabilities	55,480,770	55,426,853	57,425,831	57,011,445	57,358,857	57,814,405
Liabilities to General Government	3,641,067	3,676,834	3,720,391	3,829,194	3,884,673	3,554,118
Capital Accounts	16,078,756	15,802,089	15,909,646	16,017,264	16,188,679	16,231,624
Unclassified Liabilities	5,868,182	5,827,417	12,766,481	12,712,081	12,665,061	12,765,007
Total Liabilities	87,570,888	87,230,741	96,424,384	96,278,041	96,938,249	97,482,520
Vertical Check (Assets/Liabilities)	0	0	(0)	0	0	0

NBFIs: Non-Bank Financial Institutions

Source: Central Bank of Liberia, Monrovia, Liberia.

MONEY AND BANKING

CENTRAL BANK OF LIBERIA

1.3b: Sectoral Balance Sheet of Central Bank of Liberia-2008 - continued

Thousands of Liberian Dollars

	Jul-08	Aug-08	Sep-08	Oct-08	Nov-08	Dec-08
Assets						
Foreign Assets	9,617,451	9,783,193	9,324,728	10,118,382	9,779,677	10,294,914
Claims on General Government	74,030,616	74,027,471	71,338,632	68,928,683	68,865,550	71,994,206
Claims on Public Corporations	0	0	0	0	0	0
Claims on Private Sector	30,656	31,849	31,597	31,522	31,506	112,998
Claims on Domestic Banks	37,754	38,841	42,915	28,728	100,659	78,508
Claims on NBFIs	0	0	0	0	0	0
Unclassified Assets	13,974,265	13,978,919	13,343,718	12,768,247	12,704,623	13,188,718
Total Assets	97,690,742	97,860,272	94,081,590	91,875,562	91,482,015	95,669,344
	Jul-08	Aug-08	Sep-08	Oct-08	Nov-08	Dec-08
Liabilities						
Reserve Money	7,099,764	7,079,299	7,372,546	8,317,865	8,595,530	8,681,920
Other Deposits	0	0	0	0	0	0
Restricted Reserves	18,781	18,781	18,781	18,781	18,781	18,781
Foreign Liabilities	57,813,425	57,810,758	58,676,780	56,094,774	56,095,778	59,206,313
Liabilities to General Government	3,737,478	3,927,276	3,176,415	3,049,791	2,536,903	2,243,853
Capital Accounts	16,241,772	16,247,090	16,156,419	16,059,740	15,921,535	16,213,844
Unclassified Liabilities	12,779,523	12,777,068	8,680,649	8,334,612	8,313,489	9,304,634
Total Liabilities	97,690,742	97,860,272	94,081,590	91,875,562	91,482,015	95,669,345
Vertical Check (Assets/Liabilities)	0	0	0	0	0	(0)

NBFIs: Non-Bank Financial Institutions

Source : Central Bank of Liberia, Monrovia, Liberia.

MONEY AND BANKING

CENTRAL BANK OF LIBERIA

1.3c: Sectoral Balance Sheet of Central Bank of Liberia - 2009

'Thousands of Liberian Dollars

	Jan-09	Feb-09	Mar-09	Apr-09	May-09	Jun-09	Jul-09	Aug-09
Assets								
Foreign Assets	11,102,121	10,613,314	11,132,982	11,130,470	12,893,489	13,673,785	13,927,090	13,911,711
Claims on General Government	71,316,758	69,929,976	71,774,648	72,958,614	80,027,782	80,193,996	81,425,081	82,487,898
Claims on Public Corporations	0	0	0	0	0	0	0	0
Claims on Private Sector	106,946	349,908	191,609	196,519	208,294	207,415	216,585	258,899
Claims on Domestic Banks	219,822	202,846	581,686	287,841	337,939	244,065	316,020	304,755
Claims on NBFIs	0	0	0	0	0	0	0	0
Unclassified Assets	13,003,725	12,673,110	13,095,362	13,311,444	14,542,419	14,579,812	14,789,201	14,986,370
Total Assets	95,749,371	93,769,154	96,776,287	97,884,888	108,009,923	108,899,072	110,673,976	111,949,634
	Jan-09	Feb-09	Mar-09	Apr-09	May-09	Jun-09	Jul-09	Aug-09
Liabilities								
Reserve Money	8,764,193	8,345,865	8,724,106	8,750,867	9,332,301	9,321,971	9,415,976	9,330,936
Other Deposits	0	0	0	0	0	0	9,415,976	0
Restricted Reserves	18,781	18,781	18,781	18,781	18,781	18,781	18,781	18,781
Foreign Liabilities	58,346,413	56,859,449	58,819,462	59,898,964	66,377,214	66,554,948	67,547,961	68,490,694
Liabilities to General Government	3,101,977	3,135,381	3,256,187	2,848,070	2,934,522	3,622,464	3,754,935	3,767,550
Capital Accounts	16,072,561	16,049,696	16,410,896	16,723,165	18,062,852	18,071,369	18,477,219	18,708,172
Unclassified Liabilities	9,445,447	9,359,982	9,546,855	9,645,040	11,284,253	11,309,540	11,459,103	11,633,501
Total Liabilities	95,749,371	93,769,154	96,776,287	97,884,888	108,009,923	108,899,072	110,673,976	111,949,634
Vertical Check (Assets/Liabilities)	(0)	0	0	0	0	0	0	0

NBFIs: Non-Bank Financial Institutions

Source : Central Bank of Liberia, Monrovia, Liberia.

1.4a: Commercial Banks' Loans By Economic Sector -2007*Thousands of Liberian Dollars*

Sector	Jan-07		Feb-07		Mar-07		Apr-07		May-07		Jun-07	
	L\$	%	L\$	%	L\$	%	L\$	%	L\$	%	L\$	%
1. Agriculture	293,970	6.9	292,253	7.1	291,506	6.8	312,954	7.6	305,410	6.8	306,542	6.6
1.1 Rubber	32,587	0.8	32,387	0.8	15,535	0.4	39,038	0.9	40,182	0.9	38,307	0.8
1.2 Forestry	175,731	4.1	171,199	4.2	170,905	4.0	172,222	4.2	175,226	3.9	177,475	3.8
1.3 Fishery	9,472	0.2	9,443	0.2	82,758	1.9	11,842	0.3	11,253	0.3	10,983	0.2
1.4 Others	76,180	1.8	79,225	1.9	22,309	0.5	89,852	2.2	78,749	1.8	79,778	1.7
2. Mining & Quarrying	0	0.0	0	0.0	0	0.0	0	0.0	0	0.0	0	0.0
2.1 Iron Ore	0	0.0	0	0.0	0	0.0	0	0.0	0	0.0	0	0.0
2.2 Quarrying	0	0.0	0	0.0	0	0.0	0	0.0	0	0.0	0	0.0
3. Manufacturing	45,117	1.1	47,144	1.1	47,293	1.1	49,835	1.2	52,025	1.2	49,224	1.1
4. Construction	296,691	7.0	290,438	7.1	301,489	7.1	334,932	1.4	355,328	7.9	367,850	7.9
4.1 Mortgage Loans	12,056	0.3	13,351	0.3	10,608	0.2	11,582	0.3	10,853	0.2	10,932	0.2
4.2 Home Improvement	13,933	0.3	15,228	0.4	14,823	0.3	19,510	0.5	19,741	0.4	19,941	0.4
4.3 Others	270,702	6.3	261,859	6.4	276,058	6.5	303,840	0.6	324,734	7.3	336,977	7.2
5. Trans., Storage & Comm.	152,214	3.6	150,695	3.7	148,374	3.5	141,179	3.4	136,922	3.1	130,201	2.8
5.1 Transportation	71,646	1.7	66,247	1.6	65,818	1.5	65,169	1.6	63,865	1.4	67,639	1.4
5.2 Storage	0	0.0	0	0.0	0	0.0	0	0.0	0	0.0	0	0.0
5.3 Communication	80,568	1.9	84,448	2.1	82,556	1.9	76,009	1.8	73,057	1.6	62,562	1.3
6. Trade, Hotel & Rest.	646,061	15.1	681,114	16.6	665,606	15.6	543,191	13.2	623,611	13.9	559,485	12.0
6.1 Diamond trade	0	0.0	0	0.0	0	0.0	0	0.0	0	0.0	0	0.0
6.2 Other trade	557,693	13.1	588,801	14.3	569,495	13.3	442,958	10.8	522,699	11.7	456,182	9.8
6.3 Hotels	85,618	2.0	89,394	2.2	92,716	2.2	94,318	2.3	98,259	2.2	96,177	2.1
6.4 Restaurants	2,750	0.1	2,919	0.1	3,396	0.1	5,914	0.1	2,653	0.1	7,126	0.2
7. Others	2,833,531	66.4	2,644,545	64.4	2,822,097	66.0	3,010,006	73.2	3,002,907	67.1	3,260,267	69.8
7.1 Services	162,503	3.8	374,168	9.1	429,959	10.1	485,444	11.8	698,155	15.6	731,678	15.7
7.2 Personal	437,444	10.3	436,547	10.6	558,163	13.1	601,862	14.6	611,440	13.7	630,076	13.5
7.3 GOL	738,104	17.3	732,772	17.8	730,738	17.1	735,684	17.9	744,352	16.6	754,246	16.1
7.4 Central Bank of Liberia	803,047	18.8	797,264	19.4	795,031	18.6	801,207	19.5	810,688	18.1	821,756	17.6
7.5 Public Corporations	120,538	2.8	209,211	5.1	133,117	3.1	287,117	7.0	42,164	0.9	53,983	1.2
7.6 Others	571,895	13.4	94,583	2.3	175,091	4.1	98,693	2.4	96,128	2.1	268,529	5.7
TOTAL	4,267,583	100.0	4,106,189	100.0	4,276,364	100.0	4,112,792	100.0	4,476,203	100.0	4,673,570	100.0

Source : Central Bank of Liberia, Monrovia, Liberia.

1.4a: Commercial Banks' Loans By Economic Sector-2007 - continued*Thousands of Liberian Dollars*

Sector	Jul-07		Aug-07		Sep-07		Oct-07		Nov-07		Dec-07	
	L\$	%	L\$	%	L\$	%	L\$	%	L\$	%	L\$	%
1. Agriculture	301,757	6.7	324,985	6.5	303,838	6.0	299,863	5.7	173,171	4.4	207,324	4.9
1.1 Rubber	36,460	0.8	34,089	0.7	33,730	0.7	28,687	0.5	25,965	0.7	24,728	0.6
1.2 Forestry	176,038	3.9	190,509	3.8	158,763	3.1	158,763	3.0	32,428	0.8	34,063	0.8
1.3 Fishery	8,977	0.2	93,787	1.9	8,947	0.2	8,947	0.2	8,827	0.2	8,757	0.2
1.4 Others	80,282	1.8	6,601	0.1	102,399	2.0	103,467	2.0	105,952	2.7	139,777	3.3
2. Mining & Quarrying	0	0.0	0	0.0	0	0.0	0	0.0	0	0.0	0	0.0
2.1 Iron Ore	0	0.0	0	0.0	0	0.0	0	0.0	0	0.0	0	0.0
2.2 Quarrying	0	0.0	0	0.0	0	0.0	0	0.0	0	0.0	0	0.0
3. Manufacturing	55,044	1.2	70,447	1.4	64,213	1.3	71,964	1.4	73,660	1.9	108,924	2.6
4. Construction	359,320	8.0	426,136	8.6	425,147	8.4	482,591	9.2	516,117	13.1	279,002	6.6
4.1 Mortgage Loans	9,747	0.2	9,513	0.2	9,346	0.2	9,035	0.2	8,591	0.2	8,640	0.2
4.2 Home Improvement	17,360	0.4	17,500	0.4	16,851	0.3	15,006	0.3	13,923	0.4	14,625	0.3
4.3 Others	332,213	7.4	399,124	8.0	398,950	7.9	458,550	8.7	493,603	12.5	255,737	6.1
5. Trans., Storage & Comm.	130,166	2.9	180,428	3.6	196,529	3.9	200,556	3.8	217,126	5.5	218,403	5.2
5.1 Transportation	67,095	1.5	110,209	2.2	149,089	3.0	151,484	2.9	162,623	4.1	172,589	4.1
5.2 Storage	0	0.0	0	0.0	0	0.0	0	0.0	0	0.0	0	0.0
5.3 Communication	63,071	1.4	70,219	1.4	47,441	0.9	49,072	0.9	54,504	1.4	45,814	1.1
6. Trade, Hotel & Rest.	582,787	13.0	672,830	13.5	721,970	14.3	732,064	14.0	782,771	19.8	916,321	21.8
6.1 Diamond trade	0	0.0	6,563	0.1	6,519	0.1	6,581	0.1	7,081	0.2	7,500	0.2
6.2 Other trade	472,055	10.5	552,259	11.1	607,578	12.0	598,299	11.4	650,557	16.5	778,321	18.5
6.3 Hotels	105,834	2.4	107,133	2.2	100,862	2.0	12,177	0.2	116,030	2.9	120,625	2.9
6.4 Restaurants	4,898	0.1	6,875	0.1	7,011	0.1	115,007	2.2	9,104	0.2	9,875	0.2
7. Others	3,064,524	68.2	3,291,239	66.3	3,340,742	66.1	3,454,179	65.9	2,185,650	55.4	2,469,000	58.8
7.1 Services	748,121	16.6	859,227	17.3	998,137	19.8	1,115,872	21.3	1,313,268	33.3	1,292,412	30.8
7.2 Personal	621,959	13.8	718,612	14.5	659,125	13.0	651,766	12.4	641,648	16.3	669,657	15.9
7.3 GOL	748,092	16.6	754,125	15.2	742,059	14.7	753,823	14.4	70,584	1.8	70,750	1.7
7.4 Central Bank of Liberia	814,742	18.1	821,313	16.5	808,172	16.0	808,172	15.4	-	0.0	-	0.0
7.5 Public Corporations	36,279	0.8	34,188	0.7	32,643	0.6	32,672	0.6	32,572	0.8	329,194	7.8
7.6 Others	95,331	2.1	103,775	2.1	100,607	2.0	91,876	1.8	127,579	3.2	106,988	2.5
TOTAL	4,493,598	100.0	4,966,064	100.0	5,052,438	100.0	5,241,215	100.0	3,948,493	100.0	4,198,972	100.0

Source : Central Bank of Liberia, Monrovia, Liberia.

MONEY AND BANKING

CENTRAL BANK OF LIBERIA

1.4b: Commercial Banks' Loans By Economic Sector - 2008

Thousands of Liberian Dollars

Sector	Jan-08		Feb-08		Mar-08		Apr-08		May-08		Jun-08	
	L\$	%	L\$	%	L\$	%	L\$	%	L\$	%	L\$	%
1. Agriculture	202,725	4.6	199,464	4.2	205,824	4.3	206,388	4.1	223,817	4.2	187,103	3.6
1.1 Rubber	19,519	0.4	17,412	0.4	36,872	0.8	35,741	0.7	34,111	0.6	34,485	0.7
1.2 Forestry	34,608	0.8	34,608	0.7	34,133	0.7	34,373	0.7	48,108	0.9	45,974	0.9
1.3 Fishery	8,305	0.2	33,705	0.7	20,163	0.4	33,544	0.7	32,880	0.6	11,567	0.2
1.4 Others	140,293	3.2	113,740	2.4	114,655	2.4	102,730	2.0	108,719	2.0	95,077	1.8
2. Mining & Quarrying	0	0.0	0	0.0	0	0.0	0	0.0	0	0.0	0	0.0
2.1 Iron Ore	0	0.0	0	0.0	0	0.0	0	0.0	0	0.0	0	0.0
2.2 Quarrying	0	0.0	0	0.0	0	0.0	0	0.0	0	0.0	0	0.0
3. Manufacturing	110,281	2.5	152,655	3.2	151,638	3.2	157,871	3.1	150,764	2.8	134,932	2.6
4. Construction	318,137	7.2	511,999	10.9	504,507	10.5	591,920	11.7	603,981	11.4	629,578	12.1
4.1 Mortgage Loans	8,542	0.2	8,833	0.2	8,698	0.2	8,675	0.2	8,218	0.2	7,453	0.1
4.2 Home Improvement	14,224	0.3	12,764	0.3	12,589	0.3	12,663	0.3	12,764	0.2	12,764	0.2
4.3 Others	295,371	6.7	490,403	10.4	483,220	10.1	570,582	11.3	583,000	11.0	609,362	11.7
5. Trans., Storage & Comm.	223,969	5.1	598,062	12.7	607,620	12.7	640,309	12.6	650,259	12.2	635,349	12.2
5.1 Transportation	178,136	4.1	493,008	10.5	502,444	10.5	504,351	10.0	511,928	9.6	500,469	9.6
5.2 Storage	0	0.0	0	0.0	0	0.0	0	0.0	0	0.0	0	0.0
5.3 Communication	45,833		105,054	2.2	105,175	2.2	135,958	2.7	138,331	2.6	134,880	2.6
6. Trade, Hotel & Rest.	933,094	21.2	1,536,037	32.6	1,617,513	33.7	1,526,789	30.1	1,645,219	30.9	1,586,326	30.4
6.1 Diamond trade	7,620	0.2	7,366	0.2	7,516	0.2	8,064	0.2	7,620	0.1	7,874	0.2
6.2 Other trade	793,330	18.0	1,386,410	29.4	1,455,541	30.4	1,351,319	26.7	1,440,101	27.1	1,380,374	26.5
6.3 Hotels	121,666	2.8	131,402	2.8	142,744	3.0	139,497	2.8	171,146	3.2	168,615	3.2
6.4 Restaurants	10,478	0.2	10,859	0.2	11,712	0.2	27,909	0.6	26,353	0.5	29,464	0.6
7. Others	2,608,305	59.3	1,717,993	36.4	1,707,517	35.6	1,941,731	38.3	2,045,872	38.5	2,037,757	39.1
7.1 Services	1,301,331	29.6	1,041,003	22.1	1,013,334	21.1	957,148	18.9	1,330,115	25.0	1,363,734	26.2
7.2 Personal	692,691	15.8	436,413	9.3	453,757	9.5	752,969	14.9	505,742	9.5	462,344	8.9
7.3 GOL	71,882	1.6	71,882	1.5	70,897	1.5	71,316	1.4	69,469	1.3	69,469	1.3
7.4 Central Bank of Liberia	0	0.0	0	0.0	0	0.0	0	0.0	0	0.0	0	0.0
7.5 Public Corporations	403,339	9.2	24,721	0.5	23,356	0.5	23,477	0.5	22,244	0.4	22,117	0.4
7.6 Others	139,063	3.2	143,975	3.1	146,173	3.0	136,821	2.7	118,302	2.2	120,093	2.3
TOTAL	4,396,509	100.0	4,716,209	100.0	4,794,618	100.0	5,065,008	100.0	5,319,911	100.0	5,211,044	100.0

Source : Central Bank of Liberia, Monrovia, Liberia.

MONEY AND BANKING

CENTRAL BANK OF LIBERIA

1.4b: Commercial Banks' Loans By Economic Sector-2008 - continued

Thousands of Liberian Dollars

Sector	Jul-08		Aug-08		Sep-08		Oct-08		Nov-08		Dec-08	
	L\$	%	L\$	%	L\$	%	L\$	%	L\$	%	L\$	%
1. Agriculture	210,797	3.8	213,022	3.8	283,911	4.8	866,865	13.6	310,785	5.0	316,972	5.1
1.1 Rubber	33,025	0.6	31,248	0.6	47,379	0.8	80,484	1.3	78,461	1.3	83,204	1.3
1.2 Forestry	49,467	0.9	25,845	0.5	45,695	0.8	46,847	0.7	60,252	1.0	62,208	1.0
1.3 Fishery	10,488	0.2	7,684	0.1	8,257	0.1	28,960	0.5	23,466	0.4	23,360	0.4
1.4 Others	117,818	2.1	148,246	2.6	182,581	3.1	710,574	11.1	148,606	2.4	148,200	2.4
2. Mining & Quarrying	290	0.0	291	0.0	34	0.0	0	0.0	25,342	0.4	23,083	0.4
2.1 Iron Ore	0.0	0.0	0.0	0.0	0.0	0.0	0.0	0.0	0.0	0.0	0.0	0.0
2.2 Quarrying	290	0.0	291	0.0	34	0.0	0	0.0	25,342	0.4	23,083	0.4
3. Manufacturing	164,482	3.0	151,837	2.7	168,329	2.8	182,559	2.9	181,874	2.9	183,762	3.0
4. Construction	491,831	8.9	520,674	9.3	607,650	10.2	631,408	9.9	575,518	9.2	551,124	8.8
4.1 Mortgage Loans	6,511	0.1	5,177	0.1	13,400	0.2	20,711	0.3	15,181	0.2	10,506	0.2
4.2 Home Improvement	22,225	0.4	20,511	0.4	18,733	0.3	16,955	0.3	15,054	0.2	13,440	0.2
4.3 Others	463,095	8.4	494,986	8.8	575,518	9.6	593,743	9.3	545,283	8.7	527,178	8.5
5. Trans., Storage & Comm.	638,623	11.6	623,116	11.1	710,760	11.9	736,415	11.5	764,268	12.3	735,564	11.8
5.1 Transportation	557,720	10.1	547,392	9.7	625,624	10.5	645,505	10.1	634,996	10.2	606,206	9.7
5.2 Storage	0.0	0.0	0.0	0.0	0.0	0.0	0.0	0.0	0.0	0.0	0.0	0.0
5.3 Communication	80,903	1.5	75,724	1.3	85,136	1.4	90,910	1.4	129,272	2.1	129,358	2.1
6. Trade, Hotel & Rest.	1,919,500	34.9	1,935,310	34.4	2,025,629	33.9	1,997,959	31.8	1,907,671	30.6	1,856,078	29.8
6.1 Diamond trade	7,938	0.1	7,811	0.1	7,938	0.1	7,938	0.1	7,717	0.1	8,832	0.1
6.2 Other trade	1,711,794	31.1	1,727,399	30.7	1,805,690	30.3	1,795,247	28.6	1,699,592	27.3	1,647,382	26.5
6.3 Hotels	168,763	3.1	172,500	3.1	180,942	3.0	176,634	2.8	172,526	2.8	172,591	2.8
6.4 Restaurants	31,007	0.6	27,600	0.5	31,060	0.5	18,142	0.3	27,836	0.4	27,273	0.4
7. Others	2,081,515	37.8	2,177,456	38.7	2,172,769	36.4	1,676,894	30.4	2,468,529	39.6	2,561,250	41.1
7.1 Services	1,237,737	22.5	1,075,364	19.1	1,335,388	22.4	810,412	15.5	694,739	11.1	1,758,115	28.2
7.2 Personal	632,481	11.5	876,424	15.6	492,458	8.3	517,100	9.4	544,031	8.7	582,301	9.3
7.3 GOL	72,009	1.3	71,768	1.3	68,276	1.1	68,341	1.1	68,073	1.1	68,880	1.1
7.4 Central Bank of Liberia	0	0.0	5,779	0.1	0	0.0	0	0.0	0	0.0	0	0.0
7.5 Public Corporations	20,149	0.4	18,942	0.3	20,022	0.3	19,641	0.3	19,574	0.3	18,813	0.3
7.6 Others	119,139	2.2	129,179	2.3	256,627	4.3	261,401	4.1	1,142,113	18.3	133,141	2.1
TOTAL	5,507,036	100.0	5,621,705	100.0	5,969,080	100.0	6,092,099	100.0	6,233,986	100.0	6,227,833	100.0

Source : Central Bank of Liberia, Monrovia, Liberia.

MONEY AND BANKING

CENTRAL BANK OF LIBERIA

1.4c: Commercial Banks' Loans By Economic Sector - 2009*Thousands of Liberian Dollars*

Sector	Jan-09		Feb-09		Mar-09		Apr-09		May-09		Jun-09		Jul-09		Aug-09	
	L\$	%	L\$	%	L\$	%	L\$	%	L\$	%	L\$	%	L\$	%	L\$	%
1. Agriculture	296,956	4.6	196,392	3.0	226,159	3.5	317,207	4.6	281,164	3.5	273,695	3.4	312,219	3.7	317,171	3.6
1.1 Rubber	80,729	1.3	79,439	1.2	75,916	1.2	142,975	2.1	66,596	0.8	65,918	0.8	66,010	0.8	66,959	0.8
1.2 Forestry	69,467	1.1	54,503	0.8	57,124	0.9	47,747	0.7	54,567	0.7	56,471	0.7	56,683	0.7	57,565	0.7
1.3 Fishery	12,255	0.2	16,641	0.3	49,676	0.8	53,333	0.8	71,205	0.9	61,547	0.8	80,288	1.0	106,140	1.2
1.4 Others	134,506	2.1	45,810	0.7	43,444	0.7	73,152	1.1	88,796	1.1	89,761	1.1	109,238	1.3	86,507	1.0
2. Mining & Quarrying	23,265	0.4	18,105	0.3	16,075	0.2	13,412	0.2	14,219	0.2	13,583	0.2	5,863	0.1	3,029	0.0
2.1 Iron Ore	0.0	0.0	0.0	0.0	0.0	0.0	0.0	0.0	0.0	0.0	0.0	0.0	0.0	0.0	0.0	0.0
2.2 Quarrying	23,265	0.4	18,105	0.3	16,075	0.2	13,412	0.2	14,219	0.2	13,583	0.2	5,863	0.1	3,029	0.0
3. Manufacturing	178,592	2.8	158,162	2.4	158,471	2.4	216,975	3.1	189,118	2.4	179,484	2.2	172,575	2.1	171,162	2.0
4. Construction	568,031	8.9	610,270	9.4	624,167	9.5	714,339	10.3	771,444	9.7	808,561	10.0	968,369	11.6	1,001,060	11.5
4.1 Mortgage Loans	11,353	0.2	13,196	0.2	9,664	0.1	29,473	0.4	12,808	0.2	12,025	0.1	11,518	0.1	7,983	0.1
4.2 Home Improvement	13,094	0.2	11,933	0.2	10,374	0.2	9,111	0.1	8,390	0.1	7,050	0.1	12,269	0.1	10,078	0.1
4.3 Others	543,584	8.5	585,142	9.0	604,129	9.2	675,755	9.7	750,247	9.4	789,487	9.8	944,582	11.3	982,999	11.3
5. Trans., Storage & Comm.	773,082	12.1	749,802	11.6	736,974	11.3	788,468	11.3	1,040,576	13.1	1,023,889	12.7	1,049,745	12.6	1,091,930	12.5
5.1 Transportation	669,199	10.5	629,604	9.7	605,968	9.3	671,601	9.7	777,416	9.8	805,521	10.0	766,265	9.2	773,069	8.9
5.2 Storage	0.0	0.0	0.0	0.0	0.0	0.0	33.3	0.0	35.3	0.0	0.0	0.0	35.9	0.0	0.0	0.0
5.3 Communication	103,883	1.6	120,198	1.9	131,006	2.0	116,834	1.7	263,125	3.3	218,369	2.7	283,444	3.4	318,862	3.7
6. Trade, Hotel & Rest.	1,904,129	29.7	2,136,710	33.0	2,158,625	33.0	2,234,342	32.1	2,640,360	33.2	2,734,968	33.9	2,604,255	31.2	2,684,599	30.8
6.1 Diamond trade	8,708	0.1	9,159	0.1	6,318	0.1	6,783	0.1	8,531	0.1	8,319	0.1	7,821	0.1	8,483	0.1
6.2 Other trade	1,681,815	26.3	1,914,599	29.6	1,926,661	29.4	2,015,575	29.0	2,397,581	30.2	2,505,048	31.1	2,358,549	28.3	2,388,044	27.4
6.3 Hotels	186,701	2.9	184,969	2.9	197,097	3.0	176,875	2.5	192,518	2.4	179,266	2.2	211,628	2.5	263,794	3.0
6.4 Restaurants	26,906	0.4	27,984	0.4	28,550	0.4	35,110	0.5	41,731	0.5	42,336	0.5	26,258	0.3	24,279	0.3
7. Others	2,658,474	41.5	2,597,664	40.2	2,623,640	40.1	2,666,579	38.4	3,012,688	37.9	3,026,985	37.6	3,231,291	38.7	3,440,321	39.5
7.1 Services	1,121,277	17.5	954,603	14.8	1,356,320	20.7	1,530,105	22.0	1,708,208	21.5	1,673,736	20.8	1,882,741	22.6	2,123,571	24.4
7.2 Personal	601,617	9.4	730,130	11.3	1,062,578	16.2	879,340	12.6	923,813	11.6	936,242	11.6	965,498	11.6	898,202	10.3
7.3 GOL	65,871	1.0	68,840	1.1	71,527	1.1	69,045	1.0	73,197	0.9	73,550	0.9	74,501	0.9	75,280	0.9
7.4 Central Bank of Liberia	0	0.0	0	0.0	0	0.0	0	0.0	0.0	0.0	0.0	0.0	0.0	0.0	0.0	0.0
7.5 Public Corporations	18,938	0.3	19,070	0.3	16,762	0.3	60,804	0.9	81,988	1.0	81,353	1.0	98,676	1.2	110,046	1.3
7.6 Others	850,772	13.3	825,021	12.8	116,454	1.8	127,286	1.8	225,483	2.8	262,105	3.3	209,875	2.5	233,223	2.7
TOTAL	6,402,528	100.0	6,467,103	100.0	6,544,110	100.0	6,951,320	100.0	7,949,567	100.0	8,061,164	100.0	8,344,316	100.0	8,709,271	100.0

Source : Central Bank of Liberia, Monrovia, Liberia.

MONEY AND BANKING

CENTRAL BANK OF LIBERIA

1.5: Commercial Banks' Interest Rates: 2007-2009

	Jan-07	Feb-07	Mar-07	Apr-07	May-07	Jun-07
Average Lending Rate	15.46	15.17	15.10	15.14	15.04	15.11
Average Personal Loan Rate	12.90	12.66	12.60	12.64	14.67	13.00
Average Mortgage Rate	12.00	12.00	12.00	12.00	12.00	12.00
Average Time Deposit Rate	4.00	2.25	3.94	3.50	3.76	3.77
Average Savings Rate	2.63	2.99	2.72	2.61	2.12	2.12
Average Rate on CDs	0.00	3.00	3.00	3.00	3.00	3.00

	Jul-07	Aug-07	Sep-07	Oct-07	Nov-07	Dec-07
Average Lending Rate	15.10	15.00	15.30	15.00	14.80	14.30
Average Personal Loan Rate	13.00	13.00	12.10	13.20	13.20	14.90
Average Mortgage Rate	12.00	12.00	12.00	12.00	12.00	12.00
Average Time Deposit Rate	3.90	3.90	4.00	3.60	4.30	4.30
Average Savings Rate	2.10	2.10	2.10	2.10	2.10	2.10
Average Rate on CDs	3.00	3.90	3.00	3.00	3.00	3.00

	Jan-08	Feb-08	Mar-08	Apr-08	May-08	Jun-08
Average Lending Rate	14.38	14.10	14.60	14.20	14.20	14.40
Average Personal Loan Rate	14.90	14.87	14.87	14.92	14.77	14.80
Average Mortgage Rate	12.00	12.00	12.00	12.00	12.00	12.00
Average Time Deposit Rate	4.35	4.20	4.10	4.00	3.90	4.20
Average Savings Rate	2.12	2.13	2.20	2.11	2.12	2.12
Average Rate on CDs	3.00	3.00	3.00	3.00	3.00	3.00

	Jul-08	Aug-08	Sep-08	Oct-08	Nov-08	Dec-08
Average Lending Rate	14.40	13.90	15.80	14.30	14.20	14.30
Average Personal Loan Rate	14.73	14.78	14.80	14.77	14.42	14.31
Average Mortgage Rate	14.00	14.00	14.00	14.00	14.00	14.00
Average Time Deposit Rate	3.70	4.10	3.70	3.90	3.70	4.10
Average Savings Rate	2.12	2.11	2.11	2.08	2.12	2.11
Average Rate on CDs	3.00	3.00	3.00	3.00	3.00	3.00

	Jan-09	Feb-09	Mar-09	Apr-09	May-09	Jun-09	Jul-09	Aug-09
Average Lending Rate	14.10	14.30	14.00	14.30	14.20	14.20	14.10	14.20
Average Personal Loan Rate	14.74	14.78	14.59	14.59	14.60	14.63	14.41	15.04
Average Mortgage Rate	14.00	14.00	14.00	14.00	14.00	14.49	14.00	14.48
Average Time Deposit Rate	3.80	3.90	3.60	4.30	4.30	4.30	4.10	4.20
Average Savings Rate	2.11	2.10	2.10	2.10	2.00	2.00	2.00	2.00
Average Rate on CDs	3.00	3.00	3.00	3.00	3.00	3.00	3.00	3.00

Note: CDs-Certificate of Deposits

Source : Central Bank of Liberia, Monrovia, Liberia.

MONEY AND BANKING

CENTRAL BANK OF LIBERIA

1.6: Liberian Dollar Exchange Rates - Period Averages: 2007

(Liberian dollar per US dollar)

Period 2007	Large bills ¹		
	Buy	Sell	Middle ²
Jan	60.57	61.65	61.11
Feb	60.21	61.13	60.67
Mar	60.00	61.01	60.51
Apr	60.40	61.54	60.97
May	61.22	62.17	61.69
Jun	62.02	63.00	62.51
Jul	60.77	61.71	61.24
Aug	61.91	62.91	62.41
Sep	61.12	62.12	61.62
Oct	61.13	62.15	61.64
Nov	59.65	60.67	60.16
Dec	60.27	61.27	60.77
Quarter 1	60.26	61.26	60.76
Quarter 2	61.21	62.24	61.72
Quarter 3	61.27	62.25	61.76
Quarter 4	60.35	61.36	60.86
Year	60.77	61.78	61.27

¹US dollar bank notes of denominations 5 and higher.

²Average of buying and selling rates.

Source : Central Bank of Liberia, Monrovia, Liberia.

1.6: Liberian Dollar Exchange Rates - Period Averages: 2008 - 2009*(Liberian dollar per US dollar)*

Period 2008	Large bills ¹		
	Buy	Sell	Middle ²
Jan	62.96	64.00	63.48
Feb	62.20	63.20	62.70
Mar	62.00	63.01	62.50
Apr	62.06	63.08	62.57
May	62.78	63.56	63.17
Jun	63.00	64.00	63.50
Jul	63.00	64.00	63.50
Aug	63.00	64.00	63.50
Sep	63.00	63.94	63.47
Oct	63.00	64.00	63.50
Nov	62.92	63.70	63.31
Dec	62.81	63.76	63.29
Quarter 1	62.39	63.40	62.89
Quarter 2	62.61	63.55	63.08
Quarter 3	63.00	63.98	63.49
Quarter 4	62.91	63.82	63.37
Year	62.73	63.69	63.21

Period 2009	Large bills ¹		
	Buy	Sell	Middle ²
Jan	63.94	64.93	64.44
Feb	64.00	65.00	64.50
Mar	64.50	65.35	64.92
Apr	65.60	66.23	65.91
May	67.46	68.37	67.91
Jun	69.34	70.30	69.82
Jul	70.61	71.59	71.75
Aug	71.67	72.75	72.21
Quarter 1	64.15	65.09	64.62
Quarter 2	67.47	68.30	67.88

¹US dollar bank notes of denominations 5 and higher.²Average of buying and selling rates.

Source : Central Bank of Liberia, Monrovia, Liberia.

MONEY AND BANKING

CENTRAL BANK OF LIBERIA

1.7: Liberian Dollar Exchange Rates - End of Period: 2007 - 2009*(Liberian dollars per US dollar)*

Months	2007	2008	2009
Jan	61.25	63.50	64.50
Feb	60.50	62.50	64.50
Mar	60.50	62.63	65.50
Apr	61.50	63.00	66.50
May	62.50	63.50	70.50
Jun	62.50	63.50	70.50
Jul	62.00	63.50	71.75
Aug	62.50	63.50	72.50
Sep	61.50	63.50	
Oct	61.50	63.50	
Nov	59.50	63.25	
Dec	62.50	64.00	

Source : Central Bank of Liberia, Monrovia, Liberia.

MONEY AND BANKING

CENTRAL BANK OF LIBERIA

1.8: Liberian Dollar Exchange Rates: July-August, 2009

(Liberian dollars per US dollar)

Period	Large bills ¹			Period	Large bills ¹		
	Buy	Sell	Middle ²		Buy	Sell	Middle ²
Jul				Aug			
	Buying	Selling	Middle		Buying	Selling	Middle
1	70.00	71.00	70.50	1	71.50	72.50	72.00
2	70.00	71.00	70.50	3	71.50	72.50	72.00
3	70.00	71.00	70.50	4	71.50	72.50	72.00
4	70.00	71.00	70.50	5	71.50	72.50	72.00
6	70.00	71.00	70.50	6	72.00	73.00	72.50
7	70.00	71.00	70.50	7	72.00	73.00	72.50
8	70.00	71.00	70.50	8	72.00	73.00	72.50
9	70.00	71.00	70.50	10	72.00	73.00	72.50
10	70.00	71.00	70.50	11	71.00	72.50	71.75
11	70.00	71.00	70.50	12	71.00	72.50	71.75
13	70.00	71.50	70.75	13	71.00	72.50	71.75
14	71.00	71.50	71.25	14	71.00	72.50	71.75
15	71.00	72.00	71.50	15	71.50	72.50	72.00
16	71.00	72.00	71.50	17	71.50	72.50	72.00
17	71.00	72.00	71.50	18	71.50	72.50	72.00
18	71.00	72.00	71.50	19	71.50	72.50	72.00
20	71.00	72.00	71.50	20	71.50	72.50	72.00
21	71.00	72.00	71.50	21	72.00	73.00	72.50
22	71.00	72.00	71.50	22	72.00	73.00	72.50
23	71.00	72.00	71.50	24	72.00	73.00	72.50
24	71.00	72.00	71.50	25	72.00	73.00	72.50
25	71.00	72.00	71.50	26	72.00	73.00	72.50
27	71.00	72.00	71.50	27	72.00	73.00	72.50
28	71.00	72.00	71.50	28	72.00	73.00	72.50
29	71.00	72.00	71.50	29	72.00	73.00	72.50
30	71.00	72.00	71.50	31	72.00	73.00	72.50
31	71.50	72.00	71.75				
Average	70.61	71.59	71.10	Average	71.67	72.75	72.21

Source: Central Bank of Liberia, Monrovia, Liberia.

MONEY AND BANKING

CENTRAL BANK OF LIBERIA

1.9: Commercial Banks' Inflows and Outflows: 2007 - 2009

(Thousands of United States Dollars)

Commercial Banks' Inflows and Outflows - 2007

	Jan-07	Feb-07	Mar-07	Apr-07	May-07	Jun-07	Jan-Jun Total
Inflows	41,042	58,550	69,861	61,394	61,691	57,996	350,534
Outflows	48,252	29,126	59,902	59,719	69,154	33,580	299,733

	Jul-07	Aug-07	Sep-07	Oct-07	Nov-07	Dec-07	Jul-Dec Total
Inflows	59,715	68,870	59,911	76,947	74,691	62,132	402,266
Outflows	62,832	62,239	60,460	67,098	81,126	77,192	410,947

Commercial Banks' Inflows and Outflows - 2008

	Jan-08	Feb-08	Mar-08	Apr-08	May-08	Jun-08	Jan-Jun Total
Inflows	74,719	78,974	85,703	89,174	86,462	84,156	499,188
Outflows	89,800	61,007	71,576	59,002	58,945	95,368	435,698

	Jul-08	Aug-08	Sep-08	Oct-08	Nov-08	Dec-08	Jul-Dec Total
Inflows	71,013	81,689	102,533	71,689	63,696	75,305	465,925
Outflows	71,822	76,620	91,237	83,481	75,627	88,628	487,415

Commercial Banks' Inflows and Outflows - 2009

	Jan-09	Feb-09	Mar-09	Apr-09	May-09	Jun-09	Jan-Jun Total	Jul-09	Aug-09
Inflows	69,304	61,894	71,761	75,140	70,308	57,940	406,347	56,421	53,494
Outflows	79,193	68,248	72,458	66,581	67,114	63,878	417,472	62,019	49,022

Source : Central Bank of Liberia, Monrovia, Liberia.

MONEY AND BANKING

CENTRAL BANK OF LIBERIA

1.10a: Central Bank of Liberia Fx Auction -2007

Auction No.	Date	FX Offered for sale by CBL (US\$)	Auction Rate L\$/US	Total Purchased US\$	No. of Accepted Bids	No. of Rejected Bids	Value of Rejected Bids (US\$)	Over/(Under) Subscription (US\$)	Total Value of Bids Submitted by Participating Banks/FX Bureaux (US\$)
49	8-Jan-07	400,000	59.75	292,519	8	2	100,000	7,481	392,519
50	24-Jan-07	400,000	58.50	302,330	7	10	433,000	-335,330	735,330
51	31-Jan-07	400,000	58.75	375,000	8	7	261,110	-236,110	636,110
52	7-Feb-07	400,000	58.50	379,000	9	10	440,000	-419,000	819,000
53	21-Feb-07	400,000	58.45	400,000	10	12	434,500	-451,500	851,500
54	7-Mar-07	400,000	58.50	400,000	15	10	500,000	-651,000	1,051,000
55	16-Mar-07	400,000	58.60	400,000	8	13	580,000	-580,000	980,000
56	21-Mar-07	400,000	58.61	311,500	7	11	490,000	-401,500	801,500
57	4-Apr-07	400,000	58.68	400,000	9	15	582,500	-617,500	1,017,500
58	18-Apr-07	400,000	58.75	400,000	12	13	625,000	-713,000	1,113,000
59	25-Apr-07	400,000	58.90	400,000	10	21	884,000	-919,000	1,319,000
60	2-May-07	400,000	59.00	400,000	10	22	1,031,000	-1,056,000	1,456,000
61	9-May-07	400,000	59.05	400,000	9	17	805,000	-825,000	1,225,000
62	23-May-07	400,000	59.07	400,000	9	26	1,149,000	-1,199,000	1,599,000
63	30-May-07	500,000	59.08	500,000	18	20	824,772	-1,107,772	1,607,772
64	6-Jun-07	500,000	59.10	500,000	21	23	1,047,800	-1,370,800	1,870,800
65	13-Jun-07	500,000	59.13	500,000	11	27	1,085,725	-1,110,725	1,610,725
66	20-Jun-07	1,000,000	59.60	1,000,000	23	15	542,500	-558,500	1,558,500
67	27-Jun-07	1,000,000	60.00	1,000,000	28	10	465,000	-496,920	1,496,920
68	4-Jul-07	500,000	60.01	500,000	17	7	265,576	-287,416	787,416
69	11-Jul-07	500,000	59.26	500,000	15	9	345,000	-371,440	871,440
70	18-Jul-07	500,000	59.62	500,000	17	12	569,000	-601,884	1,101,884
71	25-Jul-07	500,000	60.00	500,000	21	8	337,899	-400,724	900,724
72	1-Aug-07	500,000	60.23	500,000	16	14	412,700	-443,984	943,984
73	8-Aug-07	500,000	60.40	500,000	15	14	383,128	-416,367	916,367
74	15-Aug-07	700,000	60.30	700,000	22	9	254,269	-288,131	988,131
75	22-Aug-07	700,000	60.55	500,000	14	14	467,415	-297,434	997,434
76	29-Aug-07	500,000	60.87	500,000	10	19	458,237	-458,237	958,237
77	5-Sep-07	500,000	60.98	500,000	11	19	500,733	-503,183	1,003,183
78	12-Sep-07	500,000	60.96	500,000	17	9	295,060	-360,389	860,389
79	19-Sep-07	500,000	60.96	500,000	17	4	43,333	-52,513	552,513
80	26-Sep-07	500,000	61.04	500,000	12	8	166,244	-187,744	687,744
81	3-Oct-07	500,000	61.10	500,000	16	4	152,000	-209,430	709,430
82	10-Oct-07	500,000	61.04	500,000	14	7	190,370	-17,453	517,453
83	31-Oct-07	500,000	60.98	500,000	16	5	125,730	-171,198	671,198
84	7-Nov-07	500,000	60.10	500,000	15	0	0	-47,197	547,197
85	27-Dec-07	500,000	59.95	500,000	13	0	0	-45,000	545,000
Total		18,500,000		17,960,349	510	446	17,247,601	-18,200,900	36,700,900

Source : Central Bank of Liberia, Monrovia, Liberia.

MONEY AND BANKING

CENTRAL BANK OF LIBERIA

1.10b: Central Bank of Liberia Fx Auction -2008

Auction No.	Date	FX Offered for sale by CBL (US\$)	Auction Rate L\$/US	Total Purchased US\$	No. of Accepted Bids	No. of Rejected Bids	Value of Rejected Bids (US\$)	Over/(Under) Subscription (US\$)	Total Value of Bids Submitted by Participating Banks/FX Bureaux (US\$)
86	3-Jan-08	500,000	61.10	500,000	12	7	254,861	-255,861	755,861
87	9-Jan-08	500,000	61.50	500,000	17	8	400,000	-480,673	980,673
88	16-Jan-08	500,000	61.80	500,000	14	17	560,925	-580,652	1,080,652
89	23-Jan-08	500,000	61.99	500,000	12	18	395,544	-426,657	926,657
90	30-Jan-08	500,000	62.19	500,000	14	13	418,600	-446,842	946,842
91	6-Feb-08	500,000	61.26	500,000	10	15	457,858	-457,858	957,858
92	13-Feb-08	500,000	61.19	500,000	17	11	479,802	-516,771	1,016,771
93	20-Feb-08	500,000	60.52	500,000	13	11	461,402	-490,902	990,902
94	27-Feb-08	500,000	60.51	500,000	14	12	422,808	-441,360	941,360
95	5-Mar-08	500,000	60.70	500,000	14	8	23,534	-259,434	759,434
96	13-Mar-08	500,000	60.66	500,000	11	8	266,544	-275,944	775,944
97	19-Mar-08	500,000	60.82	500,000	11	12	379,162	-388,162	888,162
98	26-Mar-08	500,000	60.99	500,000	11	11	382,350	-392,850	892,850
99	2-Apr-08	500,000	61.01	500,000	13	10	355,468	-448,468	948,468
100	9-Apr-08	500,000	61.10	500,000	11	13	3,954,371	-403,838	903,838
101	16-Apr-08	500,000	61.22	500,000	11	13	462,782	-443,933	943,933
102	23-Apr-08	500,000	61.28	500,000	12	13	357,861	-399,410	899,410
103	30-Apr-08	500,000	61.34	500,000	14	12	471,756	-541,649	1,041,649
104	7-May-08	500,000	61.44	500,000	15	13	461,300	-507,775	1,007,775
105	15-May-08	500,000	61.47	500,000	11	22	595,016	-617,716	1,117,716
106	21-May-08	500,000	61.56	500,000	17	15	453,452	-578,412	1,078,412
107	28-May-08	500,000	61.70	500,000	11	17	379,287	-504,247	1,004,247
108	4-Jun-08	500,000	61.72	500,000	13	14	346,278	-402,212	902,212
109	11-Jun-08	500,000	61.81	500,000	14	18	677,241	-692,041	1,192,041
110	18-Jun-08	500,000	61.83	500,000	11	16	469,203	-481,840	981,840
111	25-Jun-08	500,000	61.88	500,000	11	16	553,660	-575,420	1,075,420

Source : Central Bank of Liberia, Monrovia, Liberia.

MONEY AND BANKING

CENTRAL BANK OF LIBERIA

1.10b: Central Bank of Liberia Fx Auction -2008 - continued

Auction No.	Date	FX Offered for sale by CBL (US\$)	Auction Rate L\$/US	Total Purchased US\$	No. of Accepted Bids	No. of Rejected Bids	Value of Rejected Bids (US\$)	Over/(Under) Subscription (US\$)	Total Value of Bids Submitted by Participating Banks/FX Bureaux (US\$)
112	2-Jul-08	500,000	61.90	500,000	11	18	567,523	-572,323	1,072,323
113	9-Jul-08	500,000	61.93	500,000	13	15	596,431	-620,386	1,120,386
114	16-Jul-08	500,000	61.94	500,000	14	11	480,000	-507,224	1,007,224
115	23-Jul-08	500,000	61.95	500,000	16	11	424,510	-640,150	1,140,150
116	30-Jul-08	500,000	61.96	500,000	12	11	581,937	-592,782	1,092,782
117	6-Aug-08	500,000	61.96	500,000	13	15	580,647	-614,962	1,114,962
118	13-Aug-08	500,000	61.96	500,000	13	13	468,510	-573,705	1,073,705
119	20-Aug-08	500,000	61.96	500,000	13	10	382,482	-441,002	941,002
120	27-Aug-08	500,000	61.96	500,000	13	10	332,871	-425,163	925,163
121	3-Sep-08	500,000	61.81	500,000	11	14	533,746	-558,671	1,058,671
122	10-Sep-08	500,000	61.84	500,000	11	10	398,251	-438,251	938,251
123	17-Sep-08	500,000	61.85	500,000	13	10	340,081	-374,547	874,547
124	24-Sep-08	500,000	61.86	500,000	11	11	448,513	-476,888	976,888
125	1-Oct-08	500,000	61.86	500,000	12	6	246,280	-295,722	795,722
126	8-Oct-08	500,000	61.86	500,000	14	6	229,740	-299,840	799,840
127	15-Oct-08	500,000	61.86	500,000	15	8	238,604	-373,770	873,770
128	22-Oct-08	500,000	61.86	500,000	14	9	326,300	-417,183	917,183
129	29-Oct-08	500,000	61.86	500,000	12	7	307,700	-322,250	822,250
130	5-Nov-08	500,000	61.98	500,000	12	4	161,905	-235,566	735,566
131	12-Nov-08	500,000	61.98	500,000	11	9	423,861	-425,478	925,478
132	19-Nov-08	500,000	61.99	500,000	13	5	249,925	-296,716	796,716
133	26-Nov-08	500,000	61.97	500,000	11	7	276,000	-279,500	779,500
134	3-Dec-08	500,000	61.97	500,000	11	5	210,500	-236,300	736,300
135	10-Dec-08	500,000	61.79	500,000	12	3	150,000	-179,480	679,480
136	17-Dec-08	500,000	61.88	500,000	12	6	230,770	-235,455	735,455
137	24-Dec-08	500,000	61.89	500,000	14	5	250,000	-269,188	769,188
Total		26,000,000		26,000,000	661	582	23,878,154	-22,713,430	48,713,430

Source : Central Bank of Liberia, Monrovia, Liberia.

MONEY AND BANKING

CENTRAL BANK OF LIBERIA

1.10c Central Bank of Liberia Fx Auction -2009

Auction No.	Date	FX Offered for sale by CBL (US\$)	Auction Rate L\$/US	Total Purchased US\$	No. of Accepted Bids	No. of Rejected Bids	Value of Rejected Bids (US\$)	Over/(Under) Subscription (US\$)	Total Value of Bids Submitted by Participating Banks/FX Bureaux (US\$)
138	7-Jan-09	500,000	61.98	500,000	14	19	698,182	-770,717	1,270,717
139	14-Jan-09	500,000	61.99	500,000	13	21	705,705	-745,406	1,245,406
140	21-Jan-09	500,000	61.99	500,000	12	21	687,189	-772,144	1,272,144
141	28-Jan-09	500,000	61.93	500,000	11	14	522,148	-527,118	1,027,118
142	4-Feb-09	500,000	61.95	500,000	14	14	861,994	-888,445	1,388,445
143	12-Feb-09	500,000	61.95	500,000	11	15	571,307	-575,657	1,075,657
144	18-Feb-09	500,000	61.96	500,000	13	16	577,342	-595,677	1,095,677
145	25-Feb-09	500,000	61.96	500,000	17	22	949,711	-1,114,391	1,614,391
146	12-Mar-09	500,000	63.25	500,000	12	28	1,088,544	-1,115,544	1,615,544
147	18-Mar-09	500,000	63.89	500,000	12	29	1,146,122	-1,166,261	1,666,261
148	25-Mar-09	500,000	63.98	500,000	15	19	813,050	-861,770	1,361,770
149	1-Apr-09	500,000	64.00	500,000	11	29	1,111,426	-1,131,426	1,631,426
150	8-Apr-09	500,000	64.00	500,000	12	9	249,526	-300,810	800,810
151	15-Apr-09	500,000	64.14	500,000	16	12	418,908	-445,775	945,775
152	22-Apr-09	500,000	64.47	500,000	12	21	848,825	-867,605	1,367,605
153	29-Apr-09	500,000	64.86	500,000	10	41	1,581,554	-1,581,554	2,081,554
154	6-May-09	500,000	65.11	500,000	12	30	1,240,436	-1,240,436	1,740,436
155	13-May-09	500,000	65.21	500,000	10	30	1,257,975	-1,257,975	1,757,975
156	20-May-09	500,000	66.00	500,000	11	35	1,458,877	-1,470,877	1,970,877
157	27-May-09	500,000	68.25	500,000	10	38	2,203,682	-1,203,682	1,703,682
158	3-Jun-09	500,000	69.32	500,000	15	43	1,180,462	-1,180,462	1,680,462
159	10-Jun-09	500,000	68.25	500,000	11	31	1,241,043	-1,241,043	1,741,043
160	17-Jun-09	500,000	69.00	500,000	17	18	645,538	-645,538	1,145,538
161	24-Jun-09	500,000	71.21	500,000	13	20	779,514	-779,514	1,279,514
162	1-Jul-09	500,000	70.66	500,000	14	22	974,898	(974,898)	1,474,898
163	8-Jul-09	500,000	70.67	500,000	10	20	741,994	(741,994)	1,241,994
164	15-Jul-09	500,000	71.00	500,000	11	23	983,725	(983,725)	1,483,725
165	22-Jul-09	500,000	71.30	500,000	13	15	628,031	(628,031)	1,128,031
166	29-Jul-09	500,000	71.90	500,000	11	15	598,817	(598,817)	1,098,817
167	5-Aug-09	500,000	72.40	500,000	12	15	702,596	(702,596)	1,202,596
168	12-Aug-09	500,000	71.21	500,000	10	12	488,000	(488,000)	988,000
169	19-Aug-09	500,000	71.00	500,000	11	20	863,759	(863,759)	1,363,759
170	26-Aug-09	500,000	71.90	500,000	13	7	433,500	(433,500)	933,500
Total		16,500,000		16,500,000	409	724	29,254,383	-28,895,148	45,395,148

Source : Central Bank of Liberia, Monrovia, Liberia.

REAL SECTOR

CENTRAL BANK OF LIBERIA

2.1a: Harmonized Consumer Price Index (HCPI)-2007

(December 2005=100)

Function	Weight (%)	Jan	Feb	Mar	Apr	May	Jun
Food & Non-alcoholic Beverages	45.20	116.02	116.23	116.51	122.87	118.51	126.83
Alcoholic Beverages, Tobacco & Narcotics	3.03	108.02	105.18	105.03	107.87	109.56	107.63
Clothing & Footwear	7.75	119.00	121.71	119.42	118.99	117.38	120.98
Housing, Water, Electricity, Gas & other fuels	12.00	110.15	110.04	109.99	110.03	108.96	109.34
Furnishings, Household Equipment & Routine Maintenance of the House	5.25	113.75	113.49	112.23	109.26	110.62	111.25
Health	3.91	100.34	100.00	100.00	100.00	100.00	100.00
Transport	6.11	99.64	100.35	100.17	100.17	100.17	101.90
Communication	1.53	85.98	83.36	83.34	83.41	83.51	83.51
Recreation & Culture	3.85	111.63	111.02	110.93	111.18	111.56	112.00
Education	3.20	100.00	100.00	100.00	100.00	100.00	100.00
Restaurants & Hotels	4.64	115.86	121.47	118.96	114.70	121.29	121.25
Miscellaneous Goods & Services	3.53	113.35	109.18	109.00	107.60	106.02	107.38
General Index		112.33	112.60	112.34	114.87	113.04	117.27

Function	Weight (%)	Jul	Aug	Sep	Oct	Nov	Dec
Food & Non-alcoholic Beverages	45.20	132.65	132.15	134.55	132.08	135.71	138.00
Alcoholic Beverages, Tobacco & Narcotics	3.03	111.29	111.39	110.78	110.34	110.78	109.92
Clothing & Footwear	7.75	121.12	122.46	121.38	118.89	117.38	121.17
Housing, Water, Electricity, Gas & other fuels	12.00	109.25	109.33	109.63	109.62	113.05	113.27
Furnishings, Household Equipment & Routine Maintenance of the House	5.25	114.36	115.05	118.64	121.35	117.95	117.90
Health	3.91	100.00	100.00	100.00	100.00	100.00	100.00
Transport	6.11	102.19	102.19	121.79	121.38	123.28	125.04
Communication	1.53	82.13	82.28	82.18	78.69	78.52	78.90
Recreation & Culture	3.85	111.32	111.95	112.14	112.70	111.37	115.12
Education	3.20	100.00	100.00	100.00	100.00	100.00	100.00
Restaurants & Hotels	4.64	120.77	121.21	121.76	121.72	121.33	121.51
Miscellaneous Goods & Services	3.53	106.49	108.50	107.32	107.21	106.34	114.73
General Index		120.09	120.13	122.53	121.28	123.07	124.96

The Harmonized Consumer Price Index (HCPI) is an amalgamation of the Classification of Individual Consumption by Purpose (COICOP), consisting of twelve functions (major groups), together with the Monrovia Consumer Price Index (MCPI) and its weights obtained from the 1964 limited expenditure survey.

The Survey sample comprised wage-earner and clerical-employee households of two or more persons with monthly income not exceeding US\$250.

Source : Liberia Institute for Statistics & Geo-Information Services (LISGIS)

Source : Central Bank of Liberia (CBL)

REAL SECTOR

CENTRAL BANK OF LIBERIA

2.1b: Harmonized Consumer Price Index (HCPI) - 2008

Function	Weight (%)	Jan	Feb	Mar	Apr	May	Jun
Food & Non-alcoholic Beverages	45.20	148.82	144.88	142.69	142.16	149.66	167.20
Alcoholic Beverages, Tobacco & Narcotics	3.03	112.91	107.70	111.59	112.85	114.43	114.52
Clothing & Footwear	7.75	122.13	122.57	120.78	120.56	122.05	122.73
Housing, Water, Electricity, Gas & other fuels	12.00	114.44	115.08	115.98	116.33	119.27	119.86
Furnishings, Household Equipment & Routine Maintenance of the House	5.25	124.43	126.26	126.04	127.43	128.04	128.40
Health	3.91	100.00	100.00	102.03	100.00	100.34	101.01
Transport	6.11	125.98	129.13	126.39	127.74	169.27	171.60
Communication	1.53	83.05	82.95	80.62	82.93	83.01	80.75
Recreation & Culture	3.85	116.57	116.15	121.36	121.40	121.72	120.98
Education	3.20	100.00	100.00	100.00	100.00	100.00	100.00
Restaurants & Hotels	4.64	122.28	122.06	122.00	122.02	122.20	122.29
Miscellaneous Goods & Services	3.53	119.07	117.46	117.37	117.62	115.20	116.69
General Index	100.00	130.86	129.24	128.39	128.34	134.77	143.00

Function	Weight (%)	Jul	Aug	Sep	Oct	Nov	Dec
Food & Non-alcoholic Beverages	45.20	170.89	184.01	172.03	165.21	161.72	153.33
Alcoholic Beverages, Tobacco & Narcotics	3.03	115.02	111.97	113.39	114.02	114.00	114.78
Clothing & Footwear	7.75	127.71	125.33	127.40	131.68	131.43	131.88
Housing, Water, Electricity, Gas & other fuels	12.00	120.86	122.75	122.57	119.52	119.45	117.09
Furnishings, Household Equipment & Routine Maintenance of the House	5.25	128.01	139.83	146.75	146.95	146.71	127.68
Health	3.91	100.00	100.00	100.00	100.00	100.00	100.00
Transport	6.11	171.60	171.59	169.94	168.83	168.74	161.22
Communication	1.53	80.75	80.75	80.75	80.75	80.73	80.72
Recreation & Culture	3.85	123.95	123.95	123.93	123.95	123.84	123.83
Education	3.20	100.00	100.00	100.00	100.00	100.00	100.00
Restaurants & Hotels	4.64	130.42	125.77	125.76	125.77	125.67	125.66
Miscellaneous Goods & Services	3.53	116.70	119.71	118.63	117.58	117.41	117.18
General Index	100.00	145.62	152.01	147.00	143.81	142.17	136.69

The Harmonized Consumer Price Index (HCPI) is an amalgamation of the Classification of Individual Consumption by Purpose (COICOP), consisting of twelve functions (major groups) together with the Monrovia Consumer Price Index (MCPI) and its weights obtained from the 1964 limited expenditure survey.

The Survey sample comprised wage-earner and clerical-employee households of two or more persons with monthly income not exceeding US\$250.

Source : Liberia Institute for Statistics & Geo-Information Services (LISGIS)

Source : Central Bank of Liberia (CBL)

REAL SECTOR

CENTRAL BANK OF LIBERIA

2.1c: Harmonized Consumer Price Index (HCPI) -2009

Function	Weight (%)	Jan	Feb	Mar	Apr	May	Jun	Jul	Aug
Food & Non-alcoholic Beverages	45.20	156.57	153.45	151.02	152.62	152.07	168.1	171.13	176.2
Alcoholic Beverages, Tobacco & Narcotics	3.03	116.57	115.16	123.34	124.94	124.02	128.2	132.23	137.0
Clothing & Footwear	7.75	141.12	138.95	135.14	132.85	142.31	148.9	151.41	153.7
Housing, Water, Electricity, Gas & other fuels	12.00	144.01	114.92	114.23	115.46	115.56	115.8	118.28	118.1
Furnishings, Household Equipment & Routine Maintenance of the House	5.25	144.44	143.78	150.85	154.01	174.60	175.3	177.63	180.5
Health	3.91	100.00	100.00	104.05	104.05	104.05	104.1	104.05	104.1
Transport	6.11	159.09	158.55	158.28	158.28	158.83	161.6	163.47	163.5
Communication	1.53	80.87	80.88	80.93	81.06	81.06	81.6	81.73	81.9
Recreation & Culture	3.85	124.45	124.48	120.56	125.42	127.17	128.2	129.53	129.9
Education	3.20	100.00	100.00	100.00	100.00	100.00	100.0	100.00	100.0
Restaurants & Hotels	4.64	121.44	133.77	134.06	134.73	237.92	244.3	247.21	253.6
Miscellaneous Goods & Services	3.53	119.65	119.70	117.94	115.80	126.73	131.8	133.84	136.9
General Index	100.00	139.22	138.22	137.30	138.36	145.18	153.80	156.30	159.46

The Harmonized Consumer Price Index (HCPI) is an amalgamation of the Classification of Individual Consumption by Purpose (COICOP), consisting of twelve functions (major groups) together with the Monrovia Consumer Price Index (MCPI) and its weights obtained from the 1964 limited expenditure survey.

The Survey sample comprised wage-earner and clerical-employee households of two or more persons with monthly income not exceeding US\$250.

Source : Liberia Institute for Statistics & Geo-Information Services (LISGIS)

Source : Central Bank of Liberia (CBL)

REAL SECTOR

CENTRAL BANK OF LIBERIA

2.2a: HCPI Inflation Rate - 2007 (Year-on-Year)

Function	Weight (%)	Jan	Feb	Mar	Apr	May	Jun
Food & Non-alcoholic Beverages	45.20	17.41	19.46	18.14	24.81	16.44	23.03
Alcoholic Beverages, Tobacco & Narcotics	3.03	6.11	3.33	3.52	7.58	7.24	2.56
Clothing & Footwear	7.75	11.81	14.36	10.12	9.12	7.99	8.64
Housing, Water, Electricity, Gas & other fuels	12.00	11.08	10.96	10.34	10.02	9.11	9.19
Furnishings, Household Equipment & Routine Maintenance of the House	5.25	10.83	10.58	5.21	2.10	2.82	0.96
Health	3.91	0.34	0.00	0.00	0.00	0.00	0.00
Transport	6.11	-0.36	0.35	0.31	0.38	0.24	2.04
Communication	1.53	18.81	15.19	-10.80	-10.27	-10.20	-10.20
Recreation & Culture	3.85	12.61	11.99	12.34	12.14	12.01	2.80
Education	3.20	0.00	0.00	0.00	0.00	0.00	0.00
Restaurants & Hotels	4.64	5.34	10.44	4.00	-3.33	3.34	1.69
Miscellaneous Goods & Services	3.53	6.09	1.00	5.57	3.75	3.53	2.02
General Rate of Inflation	100.00	11.99	12.98	11.21	13.49	10.08	12.45

Function	Weight (%)	Jul	Aug	Sep	Oct	Nov	Dec
Food & Non-alcoholic Beverages	45.20	23.33	16.89	21.26	11.17	15.28	18.40
Alcoholic Beverages, Tobacco & Narcotics	3.03	4.08	5.45	3.47	6.87	1.36	0.89
Clothing & Footwear	7.75	7.59	7.34	3.83	4.64	4.20	5.41
Housing, Water, Electricity, Gas & other fuels	12.00	8.85	8.93	9.22	9.20	2.50	2.56
Furnishings, Household Equipment & Routine Maintenance of the House	5.25	3.91	3.66	6.67	9.70	5.79	6.07
Health	3.91	-1.33	-1.33	-1.33	-1.33	-1.33	-1.33
Transport	6.11	2.38	2.38	22.02	21.61	23.29	25.27
Communication	1.53	-7.20	-6.14	-6.26	-10.24	-10.44	-10.00
Recreation & Culture	3.85	0.56	0.98	1.14	1.64	0.06	4.87
Education	3.20	0.00	0.00	0.00	0.00	0.00	0.00
Restaurants & Hotels	4.64	1.08	1.12	0.07	3.22	3.91	5.58
Miscellaneous Goods & Services	3.53	-1.31	-0.63	-1.72	-2.05	-1.17	7.72
General Rate of Inflation	100.00	12.62	9.91	12.71	8.59	9.46	11.66

The Harmonized Consumer Price Index (HCPI) is an amalgamation of the Classification of Individual Consumption by Purpose (COICOP), consisting of twelve functions (major groups), together the Monrovia Consumer Price Index (MCPI) and its weights obtained from the 1964 limited expenditure survey.

The Survey sample comprised wage-earner and clerical-employee households of two or more persons with monthly income not exceeding US\$250.

Source : Liberia Institute for Statistics & Geo-Information Services (LISGIS)

Source : Central Bank of Liberia (CBL)

REAL SECTOR

CENTRAL BANK OF LIBERIA

2.2b: HCPI Inflation Rate - 2008 (Year-on-Year)

Function	Weight (%)	Jan	Feb	Mar	Apr	May	Jun
Food & Non-alcoholic Beverages	45.20	28.27	24.65	22.46	15.70	26.29	31.83
Alcoholic Beverages, Tobacco & Narcotics	3.03	4.53	2.39	6.24	4.62	4.44	6.41
Clothing & Footwear	7.75	2.62	0.71	1.14	1.32	3.98	1.45
Housing, Water, Electricity, Gas & other fuels	12.00	3.89	4.58	5.44	5.73	9.46	9.62
Furnishings, Household Equipment & Routine Maintenance of the House	5.25	9.39	11.25	12.30	16.62	15.75	15.42
Health	3.91	-0.34	0.00	2.03	0.00	0.34	1.01
Transport	6.11	26.44	28.68	26.18	27.52	68.99	68.40
Communication	1.53	-3.41	-0.49	-3.26	-0.57	-0.60	-3.31
Recreation & Culture	3.85	4.43	4.62	9.41	9.19	9.11	8.02
Education	3.20	0.00	0.00	0.00	0.00	0.00	0.00
Restaurants & Hotels	4.64	5.54	0.49	2.55	6.39	0.75	0.86
Miscellaneous Goods & Services	3.53	5.05	7.59	7.69	9.32	8.66	8.67
General Rate of Inflation	100.00	16.50	14.78	14.28	11.72	19.22	21.95

Function	Weight (%)	Jul	Aug	Sep	Oct	Nov	Dec
Food & Non-alcoholic Beverages	45.20	28.82	39.24	27.86	25.09	19.17	11.10
Alcoholic Beverages, Tobacco & Narcotics	3.03	3.35	0.52	2.36	3.34	2.91	4.43
Clothing & Footwear	7.75	5.44	2.35	4.96	10.76	11.97	8.83
Housing, Water, Electricity, Gas & other fuels	12.00	10.63	12.27	11.80	9.03	5.66	3.37
Furnishings, Household Equipment & Routine Maintenance of the House	5.25	11.93	21.54	23.69	21.10	24.38	8.30
Health	3.91	0.00	0.00	0.00	0.00	0.00	0.00
Transport	6.11	67.93	67.92	39.53	39.09	36.87	28.93
Communication	1.53	-1.68	-1.86	-1.75	2.62	2.81	2.31
Recreation & Culture	3.85	11.34	10.72	10.51	9.98	11.21	7.57
Education	3.20	0.00	0.00	0.00	0.00	0.00	0.00
Restaurants & Hotels	4.64	7.99	3.76	3.29	3.33	3.58	3.42
Miscellaneous Goods & Services	3.53	9.58	10.33	10.55	9.68	10.41	2.13
General Rate of Inflation	100.00	21.26	26.54	19.97	18.57	15.52	9.39

The Harmonized Consumer Price Index (HCPI) is an amalgamation of the Classification of Individual Consumption by Purpose (COICOP), consisting of twelve functions (major groups) together the Monrovia Consumer Price Index (MCPI) and its weights, obtained from the 1964 limited expenditure survey.

The Survey sample comprised wage-earner and clerical-employee households of two or more persons with monthly income not exceeding US\$250.

Source : Liberia Institute for Statistics & Geo-Information Services (LISGIS)

Source : Central Bank of Liberia (CBL)

REAL SECTOR

CENTRAL BANK OF LI

2.2c: HCPI Inflation Rate -2009 (Year-on-Year)

Function	Weight (%)	Jan	Feb	Mar	Apr	May	Jun	Jul	Aug
Food & Non-alcoholic Beverages	45.20	5.21	5.92	5.84	7.36	1.61	0.56	0.14	-4.24
Alcoholic Beverages, Tobacco & Narcotics	3.03	3.25	6.93	10.53	10.71	8.39	11.91	14.96	22.38
Clothing & Footwear	7.75	15.55	13.37	11.89	10.19	16.59	21.35	18.56	22.66
Housing, Water, Electricity, Gas & other fuels	12.00	-0.37	-0.14	-1.51	-0.75	-3.11	-3.37	-2.14	-3.83
Furnishings, Household Equipment & Routine Maintenance of the House	5.25	16.08	13.87	19.69	20.87	36.36	36.54	38.76	29.09
Health	3.91	0.00	0.00	1.99	4.05	3.70	3.01	4.05	4.05
Transport	6.11	26.28	22.78	25.23	23.91	-6.17	-6.17	-4.74	-4.73
Communication	1.53	-2.63	-2.50	0.39	-2.26	-2.35	1.01	1.21	1.39
Recreation & Culture	3.85	6.76	7.17	-0.66	3.31	4.47	5.96	4.51	4.80
Education	3.20	0.00	0.00	0.00	0.00	0.00	0.00	0.00	0.00
Restaurants & Hotels	4.64	-0.69	9.60	9.88	10.41	94.70	99.81	89.56	101.61
Miscellaneous Goods & Services	3.53	0.48	1.91	0.49	-1.55	10.01	12.98	14.69	14.37
General Rate of Inflation	100.00	6.39	6.95	6.94	7.80	7.72	7.55	7.33	4.90

The Harmonized Consumer Price Index (HCPI) is an amalgamation of the Classification of Individual Consumption by Purpose (COICOP), consisting of twelve functions (major groups) together the Monrovia Consumer Price Index (MCPI) and its weights, obtained from the 1964 limited expenditure survey. The Survey sample comprised wage-earner and clerical-employee households of two or more persons with monthly income not exceeding US\$250.

Source : Liberia Institute for Statistics & Geo-Information Services (LISGIS)

Source : Central Bank of Liberia (CBL)

REAL SECTOR

CENTRAL BANK OF LIBERIA

2.3a: Key Output Volume-2007

Commodity	Unit	Jan-07	Feb-07	Mar-07	Apr-07	May-07	Jun-07	Jan-Jun Total
Agriculture								
Rubber	Mt.	9,394	15,183	11,768	2,538	13,488	12,833	65,204
Cocoa Beans*	Mt.	559	211	189	320	250	149	1,678
Coffee	Mt.	-	-	-	-	-	-	-
Round Logs	M ³	-	-	-	-	-	-	-
Sawn Timber	Pcs.	55,971	46,689	47,681	58,354	49,458	43,355	301,508
Fish	Kg.	-	-	-	-	-	-	-
Mining								
Gold	Ounces	324	300	-	1,170	907	375	3,076
Diamond	Carat	-	-	-	-	-	-	-
Manufacturing								
Cement	Mt.	10,385	12,425	8,675	9,851	11,202	15,900	68,438
Spirit	Litre	57,512	82,220	73,727	66,296	71,027	73,411	424,193
Beer	Litre	606,420	509,081	673,959	401,322	734,532	620,873	3,546,187
Stout	Litre	208,874	206,862	318,471	227,407	276,123	201,295	1,439,032
Malta	Litre	53,721	89,306	52,945	68,262	105,748	52,771	422,753
Soft Drink	Litre	820,593	754,517	858,982	886,788	943,654	769,694	5,034,228
Oil Paint	Gal.	3,616	2,867	3,192	2,428	2,016	1,914	16,033
Water Paint	Gal.	4,620	3,476	3,406	3,958	3,384	3,211	22,055
Varnish	Gal.	904	717	798	607	504	478	4,008
Manoline Hair Grease	Kg.	-	-	-	-	-	-	-
Thinner	Gal.	398	324	343	296	332	195	1,888
Rubbing Alcohol	Litre	49,891	31,148	8,989	40,452	75,825	22,473	228,778
Powder Soap	Kg.	11,288	8,668	10,395	6,930	11,540	7,077	55,898
Chlorox	Litre	52,990	39,743	79,485	71,563	27,687	41,359	312,827
Nail	Kg.	n.a.	n.a.	n.a	na	na	na	na
Candle	Kg.	56,700	48,510	33,023	31,605	33,600	11,204	214,642
Mattresses	Pcs.	9,710	9,201	9,175	9,805	10,176	10,054	58,121
Deep Well Water ¹	Gal.	4,175,819	4,145,607	4,362,524	4,356,025	5,567,607	4,521,516*	27,129,098
Finished Water ²	Gal.	50,617,302	41,762,741	81,179,198	85,788,415	61,619,561**	62,014,428**	382,981,645

1: Water from drilled wells

2: Water from White Plains Treatment Plant

* Estimates

**Revised

Sources :Ministries of Planning & Economic Affairs; Lands, Mines & Energy; Commerce & Industry; and Liberia Institute of Statistics & Geo-Information Services (LISGIS); Forestry Development Authority (FDA); Liberia Produce Marketing Corporation (LPMC); Bridgeway Corporation, and Liberia Water & Sewer Corporation (LWSC), Monrovia, Liberia

REAL SECTOR

CENTRAL BANK OF LIBERIA

2.3a: Key Output Volume-2007 - continued

Commodity	Unit	Jul-07	Aug-07	Sep-07	Oct-07	Nov-07	Dec-07	Jul-Dec Total	Grand Total
Agriculture									
Rubber	Mt.	12,196	4,276	18,480	5,419	8,584	6,612	55,567	120,771
Cocoa Beans*	Mt.	105	94	86	145	342	652	1,424	3,102
Coffee	Mt.	-	-	-	-	-	-	-	-
Round Logs	M ³	-	-	-	-	-	-	-	-
Sawn Timber	Pcs.	62,950	43,387	47,461	62,389	59,794	45,121	321,102	622,610
Fish	Kg.	-	-	-	-	-	-	-	-
Mining									
Gold	Ounces	970	671	1,274	1,256	1,067	1,501	6,739	75,177
Diamond	Carat	-	-	2,886	11,746	2,466	4,601	21,699	21,699
Manufacturing									
Cement	Mt.	11,776	15,850	13,728	11,476	2,442	7,958	63,230	131,668
Spirit	Litre	93,484	91,072	96,638	96,444	104,673	126,914	609,225	1,033,418
Beer	Litre	623,273	308,126	606,353	279,636	615,225	751,029	3,183,642	6,729,829
Stout	Litre	305,150	271,014	176,838	269,177	364,185	342,778	1,729,142	3,168,174
Malta	Litre	52,597	67,185	103,950	53,325	91,270	88,870	457,197	879,950
Soft Drink	Litre	681,977	638,604	527,393	790,373	657,526	434,851	3,730,724	8,764,952
Oil Paint	Gal.	2,307	2,007	2,109	3,386	3,298	4,931	18,038	34,071
Water Paint	Gal.	3,467	2,923	2,812	5,174	5,677	8,973	29,026	51,081
Varnish	Gal.	577	502	527	847	824	1,233	4,510	8,518
Manoline Hair Grease	Kg.	4,200	3,830	5,040	6,451	3,360	4,368	27,249	27,249
Thinner	Gal.	380	238	321	416	404	486	2,245	4,133
Rubbing Alcohol	Litre	-	17,979	17,979	40,003	29,440	18,114	123,515	352,293
Powder Soap	Kg.	9,450	7,875	4,200	14,117	7,613	7,928	51,183	107,081
Chlorox	Litre	32,827	39,743	44,379	79,750	25,965	35,159	257,823	570,650
Nail	Kg.	na	na	na	na	na	na	na	na
Candle	Kg.	39,900	31,500	52,500	42,000	48,069	29,400	243,369	458,011
Mattresses	Pcs.	9,780	7,136	6,334	6,928	9,511	9,440	49,129	107,250
Deep Well Water ¹ *	Gal.	6,646,629	2,984,201	3,933,719	282,143	6,207,137	7,617,850	27,671,679	54,800,777
Finished Water ^{2**}	Gal.	65,675,145	53,748,345	62,323,436	62,014,539	81,179,198	88,575,958	413,516,621	796,498,266

1: Water from drilled wells

* Estimates

2: Water from White Plains Treatment Plant

**Revised

Sources : Ministries of Planning & Economic Affairs; Lands, Mines & Energy; Commerce & Industry; and Liberia

Institute of Statistics & Geo-Information Services (LISGIS); Forestry Development Authority (FDA); Liberia

Produce Marketing Corporation (LPMC); Bridgeway Corporation, and Liberia Water & Sewer Corporation (LWSC), Monrovia, Liberia

REAL SECTOR

CENTRAL BANK OF LIBERIA

2.3b: Key Output Volume- 2008

Commodity	Unit	Jan-08	Feb-08	Mar-08	Apr-08	May-08	Jun-08	Jan-Jun Total
Agriculture								
Rubber	Mt.	10,224	8,409	8,752	5,751	10,782	6,167	50,085
Cocoa Beans	Mt.	733	383	168	141	50	73	1,548
Coffee	Mt.	-	-	-	18	-	-	18
Round Logs	M ³	-	-	-	-	-	-	-
Sawn Timber	Pcs.	78,854	99,881	107,472	112,588	84,544	92,600	575,939
Fish	Kg.	-	-	-	-	-	-	-
Mining								
Gold	Ounces	1,963	1,816	1,815	1,647	1,811	1,659	10,711
Diamond	Carat	2,429	5,239	4,647	5,112	3,362	4,348	25,137
Manufacturing								
Cement	Mt.	10,343	13,337	12,658	225	10,969	7,197	54,729
Spirit	Litre	100,962	92,726	105,750	80,989	80,989	76,021	537,437
Beer	Litre	645,450	655,889	578,224	811,933	613,659	708,690	4,013,845
Stout	Litre	203,813	275,062	261,384	306,544	258,715	210,894	1,516,412
Malta	Litre	137,618	89,187	52,668	117,794	68,643	83,057	548,967
Soft Drink	Litre	229,097	173,786	140,062	231,991	391,975	354,456	1,521,367
Oil Paint	Gal.	4,158	5,038	436	120	340	572	10,664
Water Paint	Gal.	6,765	6,055	6,150	2,170	7,650	6,225	35,015
Varnish	Gal.	1,040	1,260	109	84	480	420	3,393
Manoline Hair Grease	Kg.	3,570	5,704	2,495	2,041	4,704	4,721	23,235
Thinner	Gal.	410	-	95	75	80	115	775
Rubbing Alcohol	Litre	-	31,463	9,439	-	-	-	40,902
Powder Soap	Kg.	8,085	9,450	10,505	15,750	10,715	14,690	69,195
Chlorox	Litre	45,042	42,392	19,368	41,756	47,082	38,974	234,614
Nail	Kg.	-	-	-	-	-	-	-
Candle	Kg.	33,600	40,541	28,350	21,893	19,845	27,489	171,718
Mattresses	Pcs.	8,901	9,973	9,497	10,207	10,149	9,688	58,415
Deep Well Water ^{1*}	Gal.	4,590,322	4,562,416	4,799,607	6,976,173	-	-	20,928,518
Finished Water ^{2**}	Gal.	85,737,745	116,490,375	122,098,250	136,049,500	61,875,000	141,200,644	663,451,514

1: Water from drilled wells

* Estimates

2: Water from White Plains Treatment Plant

**Revised

Sources : Ministries of Planning & Economic Affairs; Lands, Mines & Energy; Commerce & Industry; and Liberia

Institute of Statistics & Geo-Information Services (LISGIS); Forestry Development Authority (FDA); Liberia

Produce Marketing Corporation (LPMC); Bridgeway Corporation, and Liberia Water & Sewer Corporation (LWSC), Monrovia, Liberia

REAL SECTOR

CENTRAL BANK OF LIBERIA

2.3b: Key Output Volume- 2008 - continued

Commodity	Unit	Jul-08	Aug-08	Sep-08	Oct-08	Nov-08	Dec-08	Jul-Dec Total	Grand Total
Agriculture									
Rubber	Mt.	6,920	8,870	2,439	6,408	6,721	3,331	34,689	84,774
Cocoa Beans	Mt.	736	14	165	-	-	-	915	2,463
Coffee	Mt.	-	19	56	-	-	-	75	93
Round Logs	M ³	-	-	-	-	-	-	-	-
Sawn Timber	Pcs.	85,989	57,539	57,192	81,837	92,676	85,248	460,481	1,036,420
Fish	Kg.	-	-	-	-	-	-	-	-
Mining									
Gold	Ounces	1,623	1,509	1,208	628	2,304	1,923	9,195	19,906
Diamond	Carat	7,649	5,234	4,446	2,937	221	1,339	21,826	46,963
Manufacturing									
Cement	Mt.	11,326	7,255	4,980	6,535	4,741	4,471	39,308	94,037
Spirit	Litre	102,850	113,262	125,256	106,534	91,074	115,930	654,907	1,192,344
Beer	Litre	524,670	573,664	599,735	168,298	782,750	920,063	3,569,180	7,583,025
Stout	Litre	303,526	320,958	356,273	188,591	279,148	416,006	1,864,502	3,380,914
Malta	Litre	32,939	34,214	155,295	-	138,909	50,403	411,761	960,728
Soft Drink	Litre	592,222	296,266	354,305	484,618	551,930	810,850	3,090,190	4,611,557
Oil Paint	Gal.	680	1,680	2,000	1,040	2,939	1,090	9,429	20,093
Water Paint	Gal.	7,000	7,500	7,000	5,550	12,065	17,280	56,395	91,410
Varnish	Gal.	170	420	500	260	735	272	2,357	5,750
Manoline Hair Grease	Kg.	-	2,520	2,310	2,335	4,746	3,906	15,817	39,052
Thinner	Gal.	150	125	100	150	210	325	1,060	1,835
Rubbing Alcohol	Litre	-	23,372	-	16,540	-	23,867	63,779	104,681
Powder Soap	Kg.	19,861	15,115	10,490	10,784	10,442	10,967	77,659	146,854
Chlorox	Litre	26,151	43,717	33,834	13,168	53,811	24,057	194,737	429,351
Nail	Kg.	-	-	-	-	-	-	-	-
Candle	Kg.	11,099	18,575	26,733	21,011	17,609	17,577	112,603	284,321
Mattresses	Pcs.	8,349	6,980	10,274	9,271	6,110	-	40,984	99,399
Finished Water ¹ *	Gal.	152,203,322	108,837,387	136,899,167	126,490,385	123,098,250	135,049,547	782,578,058	1,446,029,572

1: Water from White Plains Treatment Plant

* Revised

Sources : Ministries of Planning & Economic Affairs; Lands, Mines & Energy; Commerce & Industry; and Liberia

Institute of Statistics & Geo-Information Services (LISGIS); Forestry Development Authority (FDA); Liberia

Produce Marketing Corporation (LPMC); Bridgeway Corporation, and Liberia Water & Sewer Corporation (LWSC), Monrovia, Liberia

REAL SECTOR

CENTRAL BANK OF LIBERIA

2.3c: Key Output Volume - 2009

Commodity	Unit	Jan-09	Feb-09	Mar-09	Apr-09	May-09	Jun-09	Jan-Jun Total	Jul-09	Aug-09
Agriculture										
Rubber	Mt.	339	6,940	5,865	6,088	2,258	5,014	26,504	6,145*	7,393**
Cocoa Beans	Mt.	-	-	-	-	-	-	-	-	-
Coffee	Mt.	-	-	-	-	-	-	-	-	-
Round Logs	M ³	-	-	-	-	-	-	-	-	-
Sawn Timber	Pcs.	48,779	53,559	77,399	87,430	108,651	80,537	456,355	82,571	48,840
Fish	Kg.	-	-	-	-	-	-	-	-	-
Mining										
Gold	Ounces	1,525	1,758	1,623	1,636	1,892	1,624	10,058	1,044	880
Diamond	Carat	792	498	231	2,530	1,925	4,786	10,762	2,614	2,908
Manufacturing										
Cement	Mt.	6,216	8,282	7,941	9,658	11,118	5,676	48,891	6,014	3,347
Spirit	Litre	53,495	49,401	55,469	89,258	74,197	79,612	401,432	-	79,986
Beer	Litre	797,361	425,554	718,560	930,227	503,966	666,534	4,042,202	680,860	549,148
Stout	Litre	275,172	222,101	249,021	312,642	428,258	325,076	1,812,270	321,045	209,254
Malta	Litre	137,895	35,022	86,629	67,819	70,084	160,119	557,568	50,078	34,555
Soft Drink	Litre	624,161	554,604	568,289	848,405	699,070	760,176	4,054,705	848,153	255,708
Oil Paint	Gal.	1,000	1,400	1,200	600	2,280	1,680	8,160	2,000	1,600
Water Paint	Gal.	6,500	12,600	15,500	11,250	14,450	19,500	79,800	15,750	17,000
Varnish	Gal.	250	350	300	150	570	420	2,040	500	400
Manoline Hair Grease	Kg.	4,200	3,830	5,040	4,780	4,813	8,232	30,895	5,216	-
Thinner	Gal.	200	150	250	125	100	425	1,250	500	350
Rubbing Alcohol	Litre	-	17,979	17,979	30,474	14,698	-	81,130	19,552	22,384
Powder Soap	Kg.	9,450	7,875	4,200	8,946	11,503	7,187	49,161	25,568	121,133
Chlorox	Litre	32,827	39,743	44,379	49,678	26,151	46,737	239,515	53,016	43,796
Nail	Kg.	-	-	-	-	-	-	-	-	-
Candle	Kg.	39,900	31,500	52,500	45,360	18,785	29,327	217,372	11,655	26,954
Mattresses	Pcs.	-	-	-	-	-	-	-	8,901	5,125
Finished Water ^{1*}	Gal.	117,065,198	127,065,198	101,898,717	120,005,395	115,359,082	110,228,628	691,622,218	na	na

1: Water from White Plains Treatment Plant

*Revised

Sources : Ministries of Planning & Economic Affairs; Lands, Mines & Energy; Commerce & Industry; and Libe **Preliminary

Institute of Statistics & Geo-Information Services (LISGIS); Forestry Development Authority (FDA); Liberia

Produce Marketing Corporation (LPMC); Bridgeway Corporation, and Liberia Water & Sewer Corporation (LWSC), Monrovia, Liberia

REAL SECTOR

CENTRAL BANK OF LIBERIA

2.4a: Key Output Value-2007

Liberian dollars

Commodity	Unit	Jan-07	Feb-07	Mar-07	Apr-07	May-07	Jun-07	Jan-Jun Total
Agriculture								
Rubber ³	Mt.	879,955,339	1,393,187,649	855,423,960	172,727,034	1,467,145,818	1,119,359,117	5,887,798,917
Cocoa Beans ^{4*}	Mt.	36,767,167	15,768,114	12,940,955	21,825,412	15,220,500	12,061,265	114,583,413
Coffee ⁴	Mt.	-	-	-	-	-	-	-
Round Logs ³	M ³	-	-	-	-	-	-	-
Sawn Timber ⁴	Pcs.	2,095,010	2,832,609	2,884,688	3,557,819	3,051,089	2,710,109	17,131,324
Fish ⁴	Kg.	-	-	-	-	-	-	-
Mining⁴								
Gold	Ounces	10,211,803	9,871,269	-	37,464,750	28,270,609	17,905,988	103,724,419
Diamond	Carat	-	-	-	-	-	-	-
Manufacturing⁴								
Cement	Mt.	95,194,103	113,073,713	78,725,625	90,092,321	103,657,707	149,086,350	629,829,819
Spirit	Litre	3,133,000	4,665,325	4,121,575	3,638,625	3,972,500	4,058,475	23,589,500
Beer	Litre	37,063,982	46,119,482	54,366,694	52,882,970	50,441,648	43,766,619	284,641,395
Stout	Litre	24,686,300	31,649,075	36,993,975	37,273,475	34,340,875	34,517,175	199,460,875
Malta	Litre	4,992,855	5,943,945	7,458,780	7,268,415	6,529,005	6,157,095	38,350,095
Soft Drink	Litre	37,553,525	35,642,450	45,629,990	41,400,410	43,312,375	33,887,165	237,425,915
Oil Paint	Gal.	2,084,095	1,569,654	1,792,676	1,417,114	1,277,871	1,229,222	9,370,632
Water Paint	Gal.	1,109,421	936,927	929,220	862,116	804,129	815,318	5,457,131
Varnish	Gal.	595,456	448,473	512,556	404,890	365,106	351,206	2,677,687
Manoline Hair Grease	Kg.	-	-	-	-	-	-	-
Thinner	Gal.	178,350	131,715	116,009	99,076	101,850	66,636	693,636
Rubbing Alcohol	Litre	202,274	221,446	348,178	393,257	371,374	185,967	1,722,496
Powder Soap	Kg.	483,991	409,523	750,200	503,003	542,872	490,704	3,180,293
Chlorox	Litre	993,954	1,095,094	1,283,508	1,319,391	1,055,207	884,829	6,631,983
Nail	Kg.	-	-	-	-	-	-	-
Candle	Kg.	2,486,413	3,732,115	3,329,769	2,918,177	2,277,903	1,416,633	16,161,010
Mattresses	Pcs.	17,432,581	15,177,477	14,881,949	16,431,979	20,346,285	19,449,790	103,720,061
Deep Well Water ¹	Gal.	1,022,985	991,044	1,150,511	1,482,451	2,946,217	1,518,642*	9,111,850
Finished Water ²	Gal.	4,353,111	5,537,959	7,857,177	6,072,663	6,771,726**	6,972,742**	37,565,378

1. Water from drilled wells

* Estimates

2. Water from White Plains Treatment Plant.

**Revised

3. Represents Export values

4. Represents quantity sold, not quantity produced

Sources : Ministries of Planning & Economic Affairs; Lands, Mines & Energy; Commerce & Industry; Forestry Development Authority (F.D.A.);

Liberia Produce Marketing Corporation (LPMC); Bridgeway Corporation, Liberia Water & Sewer Corporation (LWSC), Monrovia, Liberia

REAL SECTOR

CENTRAL BANK OF LIBERIA

2.4a: Key Output Value-2007 - continued

Liberian dollars

Commodity	Unit	Jul-07	Aug-07	Sep-07	Oct-07	Nov-07	Dec-07	Jul-Dec Total	Grand Total
Agriculture									
Rubber ³	Mt.	1,361,080,985	279,663,204	1,560,109,148	615,197,404	795,969,681	791,616,030	5,403,636,452	11,291,435,369
Cocoa Beans ^{4*}	Mt.	7,207,297	6,428,129	5,843,754	4,784,102	18,228,576	27,223,234	69,715,092	184,298,505
Coffee ⁴	Mt.	-	-	-	-	-	-	-	0
Round Logs ³	M ³	-	-	-	-	-	-	-	0
Sawn Timber ⁴	Pcs.	2,316,342	1,624,670	1,754,777	2,307,395	2,158,324	1,645,202	11,806,710	28,938,034
Fish ⁴	Kg.	-	-	-	-	-	-	-	-
Mining⁴									
Gold	Ounces	30,014,016	21,355,448	42,120,073	44,118,419	40,244,815	55,379,780	233,232,551	336,956,970
Diamond	Carat	-	-	20,209,099	93,711,413	24,348,474	24,584,364	162,853,350	162,853,350
Manufacturing⁴									
Cement	Mt.	108,174,336	148,379,755	126,887,904	123,791,612	25,709,376	145,993,848	678,936,831	1,308,766,650
Spirit	Litre	5,949,450	5,803,350	6,147,750	5,329,250	5,862,550	7,063,375	36,155,725	59,745,225
Beer	Litre	52,915,078	36,208,421	34,387,377	45,366,453	46,496,115	89,363,848	304,737,292	589,378,687
Stout	Litre	41,418,675	36,785,425	22,319,150	38,213,025	34,212,950	61,944,725	234,893,950	434,354,825
Malta	Litre	6,591,480	5,657,295	4,621,680	5,906,460	6,323,205	14,092,155	43,192,275	81,542,370
Soft Drink	Litre	35,574,710	28,002,905	28,782,465	37,976,590	36,378,875	25,634,575	192,350,120	429,776,035
Oil Paint	Gal.	1,401,269	1,381,907	1,157,889	2,355,141	2,251,813	3,489,851	12,037,870	21,408,502
Water Paint	Gal.	892,818	685,543	636,627	1,826,131	1,639,977	2,938,184	8,619,280	14,076,411
Varnish	Gal.	400,363	394,831	330,825	588,785	562,953	872,463	3,150,220	5,827,907
Manoline Hair Grease	Kg.	360,091	450,850	33,644,520	396,962	185,293	466,714	35,504,430	35,504,430
Thinner	Gal.	123,399	90,463	142,989	203,597	200,333	302,452	1,063,233	1,756,869
Rubbing Alcohol	Litre	291,502	253,073	223,681	301,111	14,980	338,124	1,422,471	3,144,967
Powder Soap	Kg.	612,400	480,557	711,711	678,040	616,640	534,776	3,634,124	6,814,417
Chlorox	Litre	705,791	713,034	1,188,958	880,219	792,006	977,668	5,257,676	11,889,659
Nail	Kg.	-	-	-	-	-	-	-	-
Candle	Kg.	1,963,354	2,406,530	2,649,660	2,870,883	3,166,221	2,944,914	16,001,562	32,162,572
Mattresses	Pcs.	16,996,564	15,393,171	14,277,970	15,871,383	17,606,515	16,525,773	96,671,376	200,391,437
Deep Well Water ^{1*}	Gal.	1,412,337	1,366,778	1,776,811	1,410,713	5,924,995	6,771,423	18,663,057	27,774,907
Finished Water ^{2**}	Gal.	7,490,179	6,244,332	7,222,305	6,946,195	11,056,010	7,311,679	46,270,700	83,836,078

1. Water from drilled wells

2. Water from White Plains Treatment Plant.

* Estimates

3. Represents Export values

**Revised

4. Represents quantity sold, not quantity produced

Sources : *Ministries of Planning & Economic Affairs; Lands, Mines & Energy; Commerce & Industry; Forestry Development Authority (F.D.A.);*

Liberia Produce Marketing Corporation (LPMC); Bridgeway Corporation, Liberia Water & Sewer Corporation (LWSC), Monrovia, Liberia

REAL SECTOR

CENTRAL BANK OF LIBERIA

2.4b: Key Output Value - 2008

Liberian dollars

Commodity	Unit	Jan-08	Feb-08	Mar-08	Apr-08	May-08	Jun-08	Jan-Jun Total
Agriculture								
Rubber ³	Mt.	1,250,170,296	1,134,540,384	1,112,500,813	732,807,366	1,973,297,473	990,435,535	7,193,751,867
Cocoa Beans ⁴	Mt.	44,226,008	22,787,186	9,999,938	7,197,900	3,000,575	4,403,725	91,615,332
Coffee ⁴	Mt.	-	-	-	88,664	-	-	88,664
Round Logs ³	M ³	-	-	-	-	-	-	-
Sawn Timber ⁴	Pcs.	3,075,377	3,757,523	4,035,813	4,230,283	3,209,693	3,524,631	21,833,320
Fish ⁴	Kg.	-	-	-	-	-	-	-
Mining⁴								
Gold	Ounces	82,265,921	80,283,219	84,651,738	72,797,790	77,381,909	70,397,075	467,777,652
Diamond	Carat	37,389,502	31,548,822	42,294,270	56,031,496	31,914,845	116,774,364	315,953,299
Manufacturing⁴								
Cement	Mt.	124,092,418	158,047,451	149,522,625	2,659,607	130,960,317	86,374,796	651,657,214
Spirit	Litre	6,083,500	5,500,900	6,310,000	4,762,100	4,172,725	5,262,525	32,091,750
Beer	Litre	47,994,960	63,042,945	66,631,295	65,215,185	64,722,480	57,019,125	364,625,990
Stout	Litre	31,078,750	39,105,000	42,315,000	43,208,750	46,357,500	40,058,750	242,123,750
Malta	Litre	7,724,070	10,249,740	10,143,720	9,575,145	8,909,100	7,797,600	54,399,375
Soft Drink	Litre	37,557,890	37,558,610	37,556,450	14,005,630	23,303,400	23,918,720	173,900,700
Oil Paint	Gal.	1,583,851	1,158,696	1,566,000	330,970	767,136	524,256	5,930,909
Water Paint	Gal.	1,458,659	1,758,688	2,435,672	650,384	2,448,611	1,795,907	10,547,921
Varnish	Gal.	445,458	325,883	440,438	93,085	215,757	147,447	1,668,068
Manoline Hair Grease	Kg.	670,349	319,770	712,500	581,901	435,873	590,550	3,310,943
Thinner	Gal.	62,274	69,409	124,313	58,002	36,386	25,146	375,530
Rubbing Alcohol	Litre	245,826	253,308	258,750	154,235	429,556	357,188	1,698,863
Powder Soap	Kg.	526,884	699,105	656,250	775,868	612,749	1,162,050	4,432,906
Chlorox	Litre	886,657	855,228	917,500	969,522	1,063,151	939,483	5,631,541
Nail	Kg.	-	-	-	-	-	-	-
Candle	Kg.	2,447,154	2,648,762	2,716,875	2,513,437	2,529,327	2,179,320	15,034,875
Mattresses	Pcs.	18,380,164	19,024,096	18,278,539	21,355,506	21,066,215	18,777,453	116,881,973
Deep Well Water ^{1*}	Gal.	1,145,247	1,138,285	1,197,463	1,160,332	-	-	4,641,327
Finished Water ^{2**}	Gal.	12,393,287	12,065,545	16,324,997	6,810,286	7,192,909	6,349,441	61,136,465

1. Water from drilled wells

2. Water from White Plains Treatment Plant

* Estimates

3. Represents Export value:

**Revised

4. Represents quantity sold, not quantity produced

Source s: Ministries of Planning & Economic Affairs; Lands, Mines & Energy; Commerce & Industry; Forestry Development Authority (F.D.A.);

Liberia Produce Marketing Corporation (LPMC); Bridgeway Corporation, Liberia Water & Sewer Corporation (LWSC), Monrovia, Liberia

REAL SECTOR

CENTRAL BANK OF LIBERIA

2.4b: Key Output Value - 2008 continued

Liberian dollars

Commodity	Unit	Jul-08	Aug-08	Sep-08	Oct-08	Nov-08	Dec-08	Jul-Dec Total	Grand Total
Agriculture									
Rubber ³	Mt.	1,117,495,592	1,844,644	1,552	17,726	21,271	414,478,172	1,533,858,957	8,727,610,824
Cocoa Beans ⁴	Mt.	88,738,075	1,737,360	19,907,250	-	-	-	110,382,685	201,998,017
Coffee ⁴	Mt.	-	2,202,656	6,617,763	-	-	-	8,820,419	8,909,083
Round Logs ³	M ³	-	-	-	-	-	-	-	-
Sawn Timber ⁴	Pcs.	3,302,851	2,192,261	2,220,485	3,115,438	3,528,620	3,265,624	17,625,279	39,458,599
Fish ⁴	Kg.	-	-	-	-	-	-	0	0
Mining⁴									
Gold	Ounces	74,440,594	62,913,375	47,817,705	26,812,183	84,160,634	75,328,436	371,472,927	839,250,579
Diamond	Carat	136,916,003	66,994,999	66,364,772	31,049,880	3,530,867	12,752,311	317,608,831	633,562,130
Manufacturing⁴									
Cement	Mt.	135,928,989	87,070,883	59,739,233	78,429,803	56,899,112	53,481,253	471,549,273	1,123,206,487
Spirit	Litre	5,726,000	7,557,750	7,722,250	6,124,900	5,244,825	7,790,400	40,166,125	72,257,875
Beer	Litre	75,127,385	47,013,255	47,611,900	56,861,135	58,682,680	122,659,060	407,955,415	772,581,405
Stout	Litre	44,331,250	44,827,500	33,385,000	39,956,250	40,595,000	85,826,250	288,921,250	531,045,000
Malta	Litre	8,718,435	3,655,125	6,333,840	-	7,394,895	15,658,470	41,760,765	96,160,140
Soft Drink	Litre	31,132,450	23,554,220	21,529,740	26,531,070	29,000,130	51,142,120	182,889,730	356,790,430
Oil Paint	Gal.	556,006	1,405,382	1,347,468	785,813	1,309,688	1,496,809	6,901,166	12,832,075
Water Paint	Gal.	2,219,579	3,196,527	2,372,033	1,957,864	4,596,321	5,486,610	19,828,934	30,376,855
Varnish	Gal.	139,002	351,346	336,867	196,453	327,422	326,339	1,677,428	3,345,496
Manoline Hair Grease	Kg.	685,800	247,650	180,890	265,818	512,649	542,669	2,435,476	5,746,419
Thinner	Gal.	79,375	71,120	50,141	45,085	105,410	156,959	508,090	883,620
Rubbing Alcohol	Litre	334,010	264,001	254,197	354,108	412,334	314,994	1,933,644	3,632,507
Powder Soap	Kg.	679,450	752,475	510,394	939,857	697,772	629,419	4,209,367	8,642,273
Chlorox	Litre	968,693	625,475	727,684	706,316	1,004,096	2,365,780	6,398,044	12,029,585
Nail	Kg.	-	-	-	-	-	-	-	-
Candle	Kg.	2,616,835	2,372,995	1,812,703	2,250,592	2,278,440	2,372,509	13,704,074	28,738,949
Mattresses	Pcs.	18,005,351	15,733,893	21,286,875	18,726,047	15,481,988	-	89,234,155	206,116,128
Finished Water ^{2*}	Gal.	17,930,187	15,938,705	16,445,682	16,435,512	14,652,487	17,007,635	98,410,208	159,546,673

1. Water from drilled wells

2. Water from White Plains Treatment Plant.

*Revised

3. Represents Export values

4. Represents quantity sold, not quantity produced

Source: Ministries of Planning & Economic Affairs; Lands, Mines & Energy; Commerce & Industry; Forestry Development Authority (F.D.A.);

Liberia Produce Marketing Corporation (LPMC); Bridgeway Corporation, Liberia Water & Sewer Corporation (LWSC), Monrovia, Liberia

REAL SECTOR

CENTRAL BANK OF LIBERIA

2.4c: Key Output Value - 2009

Liberian dollars

Commodity	Unit	Jan-09	Feb-09	Mar-09	Apr-09	May-09	Jun-09	Jan-Jun Total	Jul-09	Aug-09
Agriculture										
Rubber ³	Mt.	150,697	447,656	380,763	561,394	153,335	350,103	2,043,948	436,935*	533,879**
Cocoa Beans ⁴	Mt.	-	-	-	-	-	-	-	-	-
Coffee ⁴	Mt.	-	-	-	-	-	-	-	-	-
Round Logs ³	M ³	-	-	-	-	-	-	-	-	-
Sawn Timber ⁴	Pcs.	1,886,492	2,075,442	3,014,846	3,461,659	4,431,250	3,407,481	18,277,170	3,538,846	2,140,853
Fish ⁴	Kg.	-	-	-	-	-	-	-	-	-
Mining⁴										
Gold	Ounces	63,907,972	80,681,591	74,789,457	73,561,123	90,932,136	78,614,719	462,486,998	52,760,398	46,032,385
Diamond	Carat	50,158,122	21,399,746	11,146,896	132,128,828	139,011,974	63,869,174	417,714,739	55,064,747	37,269,855
Manufacturing⁴										
Cement	Mt.	75,705,659	100,961,721	92,279,820	113,944,022	142,699,419	74,900,382	600,491,023	76,539,577	43,261,950
Spirit	Litre	3,317,250	3,202,250			5,177,250	5,403,500	17,100,250	4,417,500	5,498,125
Beer	Litre	49,838,615	64,053,595	77,246,015	107,018,865	59,271,405	85,615,115	443,043,610	94,916,185	44,678,445
Stout	Litre	28,261,250	44,033,750	47,995,000	54,870,250	75,161,470	62,388,400	312,710,120	66,465,040	33,487,120
Malta	Litre	6,580,935	8,106,255	9,364,815	8,092,035	8,362,305	21,935,445	62,441,790	12,050,010	5,956,650
Soft Drink	Litre	34,532,460	35,086,110	43,443,840	44,569,150	42,513,220	40,831,050	240,975,830	39,736,810	28,190,020
Oil Paint	Gal.	673,398	1,205,441	857,463	514,098	2,012,852	1,524,869	6,788,121	1,904,058	1,738,528
Water Paint	Gal.	1,458,659	1,758,688	2,435,672	4,238,837	5,590,521	7,861,732	23,344,109	6,200,987	6,950,776
Varnish	Gal.	168,350	301,360	214,366	128,525	503,213	381,217	1,697,031	476,015	434,632
Manoline Hair Grease	Kg.	378,907	465,948	354,463	711,828	488,952	226,915	2,627,013	735,885	433,260
Thinner	Gal.	62,274	69,409	124,313	82,388	67,910	296,735	703,029	355,500	252,735
Rubbing Alcohol	Litre	306,734	261,548	235,660	210,912	507,457	161,459	1,683,770	290,799	330,361
Powder Soap	Kg.	683,064	496,650	749,826	693,538	987,921	601,150	4,212,149	462,861	357,440
Chlorox	Litre	742,671	736,913	1,252,631	767,687	842,933	1,006,426	5,349,261	1,438,709	935,107
Nail	Kg.	-	-	-	-	-	-	-	-	-
Candle	Kg.	2,065,946	2,484,806	2,791,560	1,587,113	2,211,829	3,589,446	14,730,700	1,881,306	2,115,753
Mattresses	Pcs.	-	-	-	-	-	-	-	20,491,325	11,084,657
Finished Water ^{2*}	Gal.	14,505,894	14,426,087	14,018,070	18,296,154	12,007,475	17,417,385	90,671,065	na	na

1. Water from drilled wells

2. Water from White Plains Treatment Plant.

*Revised

3. Represents Export values

**Preliminary

4. Represents quantity sold, not quantity produced

Source s: Ministries of Planning & Economic Affairs; Lands, Mines & Energy; Commerce & Industry; Forestry Development Authority (F.D.A.);

Liberia Produce Marketing Corporation (LPMC); Bridgeway Corporation, Liberia Water & Sewer Corporation (LWSC), Monrovia, Liberia

GOVERNMENT FINANCE

CENTRAL BANK OF LIBERIA

3.1: Government Revenue 2007-2009

Millions of Liberian Dollars

Revenue Category	2007				2008						2009			
	Jan-Mar Actual	Apr-Jun Actual	Jul-Sep Actual	Oct-Dec Actual	Jan-Feb Actual	Mar-Apr Actual	May-Jun Actual	Jul-Aug Actual	Sep-Oct Actual	Nov-Dec Actual	Jan-Feb Actual	Mar-Apr Actual	May-Jun Actual	Jul-Aug Actual
Customs and Excise	973.0	1,220.5	1,128.1	1,232.7	872.6	804.1	847.8	940.1	897.1	996.3	880.4	906.8	1,058.7	1,117.2
Direct Taxes	1,227.1	769.4	645.1	628.2	589.0	1,061.2	523.5	698.3	627.2	455.4	883.0	1,217.5	776.6	780.4
Indirect Taxes	160.1	131.3	545.8	459.1	580.0	229.7	735.6	265.8	227.1	169.4	337.2	590.5	468.0	443.9
FDA ¹ Levy	-	3.8	5.9	9.3	9.9	7.1	13.6	8.8	11.6	6.8	1.9	128.4	9.2	9.9
Petroleum Sales Levy	51.2	80.1	55.5	34.7	52.2	102.3	79.0	74.4	91.2	87.3	102.8	5.4	113.8	112.5
Maritime	205.5	171.1	159.2	240.9	161.1	71.3	212.5	148.8	59.7	196.9	203.7	49.3	185.0	166.5
Grant	-	87.0	-	-	272.8	-	104.6	-	-	7.9	774.8	-	795.9	-
Total	2,616.9	2,463.2	2,539.6	2,604.9	2,537.6	2,275.7	2,516.6	2,136.1	1,913.9	1,920.0	3,183.8	2,897.9	3,407.2	2,630.4

3.2: Government Expenditure 2007-2009

Millions of Liberian Dollars

Expenditure Category	2007				2008						2009			
	Jan-Mar Actual	Apr-Jun Actual	Jul-Sep Actual	Oct-Dec Actual	Jan-Feb Actual	Mar-Apr Actual	May-Jun Actual	Jul-Aug Actual	Sep-Oct Actual	Nov-Dec Actual	Jan-Feb Actual	Mar-Apr Actual	May-Jun Actual	Jul-Aug Actual
General Adimistration ²	665.7	964.8	1,107.1	1,118.6	720.3	937.4	686.4	908.9	1,249.4	881.6	926.9	1,137.0	1,016.0	832.3
Social and Community Services	399.8	683.6	316.2	476.7	397.3	378.9	494.4	559.1	796.3	554.7	623.7	926.3	797.7	633.3
Economic Services	119.8	227.1	143.4	170.9	200.1	173.9	168.2	63.8	179.8	190.8	101.5	167.7	124.6	171.0
GOL Special Commitment	-	-	-	-	-	-	-	-	-	-	-	-	-	-
Development Expenditure	-	-	-	-	-	-	-	-	-	-	-	-	-	-
Other Expenditures ³	448.7	644.1	944.4	1,067.3	523.4	575.8	1,178.6	595.4	1,055.1	864.6	332.6	787.7	693.3	1,408.50
Total	1,634.0	2,519.6	2,511.1	2,833.5	1,841.0	2,066.0	2,527.6	2,127.3	3,280.6	2,491.6	1,984.8	3,018.7	2,631.5	3,045.1

1 : Forestry Development Authority (FDA)

2 : General Adimistration includes Security Service Sector

3 : Other Expenditures includes what was previously Development and Commitment

Source : Ministry of Finance, Monrovia, Liberia

GOVERNMENT FINANCE

CENTRAL BANK OF LIBERIA

3.3: Functional Classification of Government Expenditure 2007-2009

Millions of Liberian Dollars

Functional Classification	Jan-Jun 2007 Actual	Jul-Dec 2007 Actual	Jan-Feb 2008 Actual	Mar-Apr 2008 Actual	May-Jun 2008 Actual	Jul-Aug 2008 Actual	Sep-Oct 2008 Actual	Nov-Dec 2009 Actual	Jan-Feb 2009 Actual	Mar-Apr 2009 Actual	May-Jun 2009 Actual	Jul-Aug 2009 Actual
General Administration *	1,630.5	2,225.7	720.3	937.4	415.3	908.9	1,249.4	881.6	926.9	1,137.0	1,016.0	832.3
National Legislature	263.0	322.3	89.0	217.5	139.5	122.2	190.0	171.3	84.6	155.8	224.5	131.3
Executive Policy	667.3	675.7	301.7	320.3	162.0	781.9	421.1	326.2	285.5	405.1	339.3	282.0
Internal Management Services	68.7	154.9	41.2	63.9	14.7	81.5	55.9	59.8	36.3	42.7	48.8	71.0
Protection of Person & Property	333.0	818.0	162.9	220.4	52.7	212.0	369.2	203.3	275.1	330.7	260.4	237.9
Foreign Affairs	130.8	96.5	114.3	89.4	32.5	4.8	101.7	85.8	64.9	87.3	105.7	75.4
Defence	167.7	158.3	11.3	25.9	13.9	38.3	111.7	35.2	180.6	115.5	37.2	34.6
Social & Community Services	1,083.2	792.9	397.3	378.9	168.2	559.1	796.3	544.7	623.7	926.3	797.7	633.3
Social Services	638.3	468.8	170.8	279.7	106.3	432.9	412.1	311.9	383.2	392.7	561.3	445.4
Community Services	444.9	324.1	226.5	99.2	61.9	126.2	384.3	232.8	240.5	533.6	236.3	187.9
Economic Services	347.1	314.2	200.1	173.9	101.8	63.8	179.8	190.8	101.5	167.7	124.6	171.0
Primary	177.5	119.5	33.5	77.7	62.4	13.7	46.8	83.6	50.9	102.1	33.5	39.4
Secondary	169.6	194.7	166.7	96.1	39.3	50.2	133.0	107.2	50.5	65.6	91.1	131.6
Other Expenditure	1,092.8	2,011.7	523.4	575.8	387.1	595.4	1,055.1	864.6	332.6	787.7	693.3	1,408.5
Development	-	-	-	-	-	-	-	-	-	-	-	-
Total	4,153.6	5,344.5	1,841.0	2,066.0	1,072.4	2,127.3	3,280.6	2,481.6	1,984.8	3,018.7	2,631.5	3,045.0

* Also includes the Security Services Sector

**3.4: Summary Estimates of Liberia's Public Debt Profile and Status
as at End-June 2009**

(In Millions US\$)

External Debt	Current	Percentage Distribution
Multilateral	1070.7	39.7
Bilateral	690.9	25.6
O/W		
Paris Club	571.8	
Non-Paris Club	119.1	
Commercials	20.50	0.8
O/W		
Financial Institutions	20.50	
Suppliers' Credit	-	
Sub-Total	1,782.10	
Domestic Debt	912.94	33.9
Sub-Total	912.94	
Total Stock of Debt	2,695.04	100.0

Source : Ministry of Finance, Monrovia, Liberia

EXTERNAL TRADE

CENTRAL BANK OF LIBERIA

4.1: Exports and Imports 2007-2009

(Millions of United States Dollars)

Period	2007		2008		2009		Balance of Trade		
	Exports	Imports	Exports	Imports	Exports	Imports	2007	2008	2009
Jan	15.5	25.8	22.8	71.5	18	97.4	(10.3)	(48.7)	(79.4)
Feb	23.3	64.3	21.1	42.4	24.8	47.9	(41.0)	(21.3)	(23.1)
Mar	14.1	25.7	20.7	63.1	11.3	57.7	(11.6)	(42.4)	(46.4)
Apr	4.1	34.9	14.8	85.0	12.4	36.9	(30.8)	(70.2)	(24.5)
May	24.6	29.7	33.8	56.6	9.2	51.7	(5.1)	(22.8)	(42.5)
Jun	19.6	36.9	19.1	46.5	11.1	55.9	(17.3)	(27.4)	(44.8)
Jul	23.1	56.0	22.3	34.3	11.7	51.8	(32.9)	(12.0)	(40.1)
Aug	5.5	66.4	21.3	121.9	13.4	34.3	(60.9)	(100.6)	(20.9)
Sep	26.8	28.4	20.7	106.3			(1.6)	(85.6)	-
Oct	12.9	58.6	19.8	99.7			(45.7)	(79.9)	-
Nov	14.6	34.5	17.0	47.4			(19.9)	(30.4)	-
Dec	16.1	38.2	9.0	38.7			(22.1)	(29.7)	-
Total	200.2	499.4	242.4	813.4	111.9	433.6	(299.2)	(571.0)	(321.7)

4.2a: Commodity Composition of Exports-2007

(Thousands of United States Dollars)

Commodity	Jan	Feb	Mar	Apr	May	Jun*	Jan-Jun Total
Rubber	14,399.5	22,963.4	13,762.4	2,833.0	23,782.5	17,906.9	95,647.7
Cocoa beans	272.2	0.0	0.0	183.4	0.0	122.1	577.7
Coffee	0.0	0.0	154.8	90.0	0.0	18.0	262.8
Round Logs	0.0	0.0	0.0	0.0	0.0	0.0	0.0
Iron Ore	400.0	0.0	0.0	0.0	0.0	80.0	480.0
Gold	167.1	162.7	0.0	614.5	458.3	286.4	1,689.0
Other Commodities	244.4	185.9	222.1	355.0	366.8	1,191.1	2,565.3
Total	15,483.2	23,312.0	14,139.3	4,075.9	24,607.6	19,604.5	101,222.5

Commodity	Jul	Aug	Sep	Oct	Nov	Dec	Jul-Dec Total	Grand Total
Rubber	22,225.3	4,481.1	25,318.2	9,980.5	13,230.9	13,026.4	88,262.4	183,910.1
Cocoa beans	19.7	-	-	364.0	101.1	903.5	1,388.3	1,966.0
Coffee	-	-	-	-	-	-	-	262.8
Round Logs	-	-	-	-	-	-	-	0.0
Iron Ore	-	-	-	-	-	-	-	480.0
Gold	490.1	342.2	683.3	715.7	618.6	911.3	3,761.2	5,450.2
Diamond	-	-	328.0	1,520.3	404.7	404.5	2,657.5	2,657.5
Other Commodities	403.5	646.1	454.7	345.0	199.4	812.0	2,860.7	5,426.0
Total	23,138.6	5,469.4	26,784.2	12,925.5	14,554.7	16,057.7	98,930.1	200,152.6

* Estimates

Sources: Forestry Development Authority (F.D.A.) and Ministry of Commerce & Industry, Monrovia, Liberia

EXTERNAL TRADE

CENTRAL BANK OF LIBERIA

4.2b: Commodity Composition of Exports-2008*(Thousands of United States Dollars)*

Commodity	Jan	Feb	Mar	Apr	May	June	Jan-Jun Total
Rubber	19,693.9	18,094.7	17,800.0	11,711.8	31,237.9	15,597.4	114,135.8
Cocoa beans	161.0	161.0	136.5	231.0	340.9	343.5	1,373.9
Coffee	0.0	0.0	0.0	13.8	0.0	0.0	13.8
Round Logs	0.0	0.0	0.0	0.0	156.6	0.0	156.6
Iron Ore	0.0	0.0	270.0	0.0	0.0	0.0	270.0
Diamond	589.0	503.2	676.7	895.5	505.2	1,839.0	5,008.6
Gold	1,295.9	1,280.4	1,354.4	1,163.5	1,225.0	1,108.6	7,427.9
Other Commodities	1,024.7	1,034.6	516.7	790.2	348.8	220.5	3,935.6
Total	22,764.6	21,073.9	20,754.4	14,805.9	33,814.4	19,109.0	132,322.1

Commodity	Jul	Aug	Sep	Oct	Nov	Dec	Jul-Dec Total	Grand Total
Rubber	17,598.4	17,744.2	18,110.1	17,726.7	14,957.4	6,548.9	92,685.7	206,821.4
Cocoa beans	0.0	324.0	42.0	531.4	533.7	544.0	1,975.1	3,349.0
Coffee	0.0	0.0	0.0	0.0	0.0	0.0	0.0	13.8
Round Logs	0.0	0.0	0.0	0.0	0.0	0.0	0.0	156.6
Iron Ore	1,200.0	0.0	0.0	0.0	0.0	0.0	1,200.0	1,470.0
Diamond	2,156.2	1,055.0	1,045.6	489.0	55.8	201.5	5,003.1	10,011.6
Gold	1,172.3	990.8	753.4	422.2	1,329.3	1,190.2	5,858.2	13,286.1
Other Commodities	159.2	1,180.4	729.1	636.8	135.3	509.1	3,349.9	7,285.5
Total	22,286.0	21,294.4	20,680.2	19,806.1	17,011.6	8,993.7	110,072.0	242,394.1

4.2c: Commodity Composition of Exports-2009*(Thousands of United States Dollars)*

Commodity	Jan	Feb	Mar	Apr	May	Jun	Jan-Jun Total	Jul*	Aug**
Rubber	6,513.5	12,584.9	7,919.4	8,517.6	2,862.7	8,365.1	46,763.2	10,217.1	11,785.0
Cocoa beans	75.0	336.6	364.0	538.4	477.6	0.0	1,791.6	42.50	324.00
Coffee	0.0	0.0	0.0	0.0	0.0	7.5	7.5	0.00	128.50
Round Logs	505.9	0.0	549.8	0.0	0.0	14.6	1,070.3	-	-
Iron Ore	0.0	0.0	0.0	0.0	0.0	0.0	0.0	300.00	-
Diamond	778.4	331.8	171.7	722.8	2,047.0	914.8	4,966.5	774.47	516.13
Gold	991.7	1,250.9	1,152.0	1,116.1	1,339.0	1,126.0	6,975.7	742.06	637.48
Other Commodities	9,129.7	10,293.7	1,096.5	1,560.2	2,499.9	706.8	25,286.8	443.73	1,132.55
Total	17,994.2	24,797.9	11,253.4	12,455.1	9,226.2	11,134.7	86,861.5	12,519.86	14,523.61

* Revised

**Preliminary

Source: Ministry of Commerce & Industry and Ministry of Lands, Mines and Energy, Monrovia, Liberia

EXTERNAL TRADE

CENTRAL BANK OF LIBERIA

4.3a: Commodity Composition of Imports-2007

Thousands of United States Dollars

Commodity	Jan	Feb	Mar	Apr	May	Jun	Jan-Jun Total
Food and Live Animals	5,661.7	26,836.1	5,355.5	5,342.3	5,428.0	8,753.9	57,377.5
O/w Rice	625.3	20,696.8	602.8	603.2	-	126.5	22,654.6
Beverage and Tobacco	1,317.5	1,575.0	1,005.5	864.0	2,247.7	305.8	7,315.5
Crude Materials	112.8	736.9	559.4	750.5	660.5	312.3	3,132.4
Mineral, Fuels, Lubricants	516.2	1,058.2	883.2	227.8	169.8	235.2	3,090.4
Animal and Vegetable Oil	131.8	161.2	369.3	869.8	369.8	443.9	2,345.8
Chemicals and Related Products	1,586.9	1,351.0	1,352.9	1,668.9	1,490.2	855.9	8,305.8
Manufactured Products	2,682.2	8,628.6	1,589.3	2,813.8	4,081.0	4,549.3	24,344.2
Machinery & Transport Equipment	4,556.3	10,119.5	5,753.7	11,463.3	6,611.0	8,600.9	47,104.7
Petroleum Products	7,762.6	8,331.7	6,277.5	6,467.2*	6,436.9	10,337.9	45,613.8
Miscellaneous Articles ¹	1,435.1	5,504.8	2,554.5	4,425.4	2,201.3	2,515.5	18,636.6
Total	25,763.1	64,303.0	25,700.8	34,893.0	29,696.2	36,910.6	217,266.7

Commodity	Jul	Aug	Sep	Oct	Nov	Dec	Jul-Dec Total	Grand Total
Food and Live Animals	8,239.9	25,437.0	5,530.0	18,131.0	3,104.6	13,074.2	73,516.7	130,894.20
O/w Rice	332.8	19,608.0	-	9,873.8	-	7,494.5	37,309.1	59,963.70
Beverage and Tobacco	1,686.7	1,881.8	839.7	2,090.9	392.1	1,500.1	8,391.3	15,706.80
Crude Materials	406.9	812.2	416.1	783.2	373.6	1,014.7	3,806.7	6,939.10
Mineral, Fuels, Lubricants	607.6	555.5	248.0	574.9	368.6	205.0	2,559.6	5,650.00
Animal and Vegetable Oil	884.9	185.9	3,102.6	211.3	475.4	-	4,860.1	7,205.90
Chemicals and Related Products	3,236.5	2,007.9	1,158.7	2,555.3	1,993.5	1,176.9	12,128.8	20,434.60
Manufactured Products	15,322.8	8,902.0	5,034.6	4,399.1	7,868.6	4,828.4	46,355.5	70,699.70
Machinery & Transport Equipment	9,948.7	7,726.4	8,275.3	10,391.1	7,694.3	6,270.8	50,306.6	97,411.30
Petroleum Products	11,407.4	15,129.1	1,716.2	14,447.9	9,240.4	6,044.9	57,985.9	103,599.70
Miscellaneous Articles ¹	4,228.3	3,739.3	2,043.4	4,968.0	2,953.4	4,052.8	21,985.2	40,621.80
Total	55,969.7	66,377.1	28,364.6	58,552.7	34,464.5	38,167.8	281,896.4	499,163.10

1. Includes commodities and transactions not classified elsewhere.

*Revised

Sources: Ministry of Commerce & Industry and Ministry of Finance, Monrovia, Liberia.

EXTERNAL TRADE

CENTRAL BANK OF LIBERIA

4.3b: Commodity Composition of Imports-2008

Thousands of United States Dollars

Commodity	Jan	Feb	Mar	Apr	May	Jun	Jan-Jun Total
Food and Live Animals	25,936.4	5,440.2	17,167.3	7,460.1	12,230.7	3,242.6	71,477.3
O/w Commercial Rice	15,840.0	-	12,826.0	-	5,783.8	-	34,449.8
O/w Non-Commercial Rice	1,187.9	598.7	592.0	-	-	-	2,378.5
Beverage and Tobacco	887.9	208.6	1,152.8	1,683.9	1,773.8	1,284.0	6,991.1
Crude Materials	912.4	2,186.4	2,479.9	547.5	596.5	813.3	7,536.1
Mineral, Fuels, Lubricants	3,911.5	1,998.2	2,545.9	1,046.1	972.4	638.8	11,112.8
Animal and Vegetable Oil	305.8	340.3	773.4	243.1	-	-	1,662.6
Chemicals and Related Products	2,513.6	2,223.7	3,754.1	3,219.9	2,839.3	2,130.1	16,680.6
Manufactured Products	3,529.0	6,579.6	8,794.5	9,021.2	14,010.0	4,616.5	46,550.8
Machinery & Transport Equipment	19,922.2	11,048.6	8,813.1	51,470.9	17,081.6	8,526.1	116,862.4
Petroleum Products	6,201.0	11,636.9	13,913.0	7,185.0	3,582.5	22,917.3	65,435.6
Miscellaneous Articles ¹	7,373.9	704.9	3,711.3	3,122.4	3,518.5	2,371.1	20,802.1
Total	71,493.6	42,367.2	63,105.3	85,000.1	56,605.3	46,539.8	365,111.3

Commodity	Jul	Aug	Sep	Oct	Nov	Dec	Jul-Dec Total	Grand Total
Food and Live Animals	5,369.4	31,757.6	42,242.5	24,134.1	14,879.4	16,932.1	135,315.1	206,792.3
O/w Commercial Rice	-	23,705.2	24,086.7	12,450.0	-	10,950.0	71,191.9	105,641.7
O/w Non-Commercial Rice	698.0	682.5	4,218.2	699.2	-	-	6,297.9	8,676.4
Beverage and Tobacco	729.1	1,019.5	1,384.5	2,178.8	1,164.8	463.6	6,940.4	13,931.5
Crude Materials	1,251.3	594.0	939.5	1,060.8	1,279.1	285.4	5,410.1	12,946.1
Mineral, Fuels, Lubricants	291.3	666.5	471.8	461.3	110.7	309.3	2,310.9	13,423.7
Animal and Vegetable Oil	70.6	133.3	153.2	317.1	325.2	262.7	1,262.1	2,924.6
Chemicals and Related Products	1,889.8	5,014.7	3,973.2	5,690.5	1,991.0	1,231.7	19,790.9	36,471.5
Manufactured Products	3,760.5	19,845.4	11,073.1	11,797.4	6,231.4	5,475.6	58,183.5	104,734.3
Machinery & Transport Equipment	11,290.7	17,408.1	15,305.4	27,537.7	15,844.4	10,911.4	98,297.6	215,160.0
Petroleum Products	6,942.3	27,498.9	23,544.3	20,051.9	3,578.1	-	81,615.5	147,051.1
Miscellaneous Articles ¹	2,667.5	17,982.8	7,213.9	6,512.2	2,029.9	2,848.0	39,254.3	60,056.4
Total	34,262.3	121,920.8	106,301.4	99,741.8	47,434.1	38,719.8	448,380.2	813,491.5

1. Includes commodities and transactions not classified elsewhere.

Sources: Ministry of Commerce & Industry and Ministry of Finance, Monrovia, Liberia.

EXTERNAL TRADE

CENTRAL BANK OF LIBERIA

4.3c: Commodity Composition of Imports - 2009

Thousands of United States Dollars

Commodity	Jan	Feb	Mar	Apr	May	Jun	Jan-Jun Total	Jul*	Aug**
Food and Live Animals	41,362.7	18,238.5	9,938.2	6,464.4	16,759.8	17,857.3	110,620.9	9,533.1	6,915.4
O/w Commercial Rice	23,809.7	14,204.7	346.5	-	8,655.4	10,708.3	57,724.6	122.4	38.3
O/w Non-Commercial Rice	739.7	-	1,393.6	-	1,096.7	47.7	3,277.6	104.0	70.2
Beverage and Tobacco	2,280.2	562.2	1,790.3	1,995.7	1,224.1	1,439.3	9,291.7	1,088.4	2,046.5
Crude Materials	3,739.1	680.2	3,252.7	1,006.7	1,099.4	1,260.7	11,038.9	819.2	379.0
Mineral, Fuels, Lubricants	2,680.8	526.5	1,049.1	922.9	1,480.2	1,301.8	7,961.2	899.3	487.9
Animal and Vegetable Oil	4,551.4	312.5	547.1	3,238.6	1,880.2	253.0	10,782.7	-	571.9
Chemicals and Related Products	3,264.6	1,507.4	3,738.5	2,766.4	1,917.7	2,365.2	15,559.7	2,711.3	2,427.2
Manufactured Products	9,621.4	2,919.2	6,354.3	4,220.4	18,749.3	7,891.8	49,756.3	10,820.9	3,629.3
Machinery & Transport Equipment	23,840.0	14,119.6	14,609.2	9,117.8	5,875.8	13,778.6	81,341.0	10,901.7	4,491.2
Petroleum Products	2,271.3	7,018.1	12,434.4	5,335.1	1,956.4	7,806.4	36,821.8	13,135.6	11,568.9
Miscellaneous Articles ¹	3,739.2	2,059.0	3,969.8	1,870.8	800.7	1,939.9	14,379.4	1,848.1	1,746.6
Total	97,350.5	47,943.2	57,683.6	36,938.8	51,743.5	55,894.0	347,553.5	51,757.6	34,264.0

1. Includes commodities and transactions not classified elsewhere.

*Actual

**Preliminary

Sources: Ministry of Commerce & Industry and Ministry of Finance, Monrovia, Liberia.

EXTERNAL TRADE

CENTRAL BANK OF LIBERIA

4.4: Volume of Imports of Petroleum Products-2007 - 2008

(Volume in gals.)

2007	Premium	Diesel	Kerosene	Jet fuel	Total
Jan	1,695,234	2,091,697	0	1,028,000	4,814,931
Feb	4,181,000	0	160,000	800,000	5,141,000
Mar	1,586,643	1,500,498	161,298	0	3,248,439
Apr	2,627,000	925,000	370,000	96,000	4,018,000
May	563,880	2,400,433	0	96,000	3,060,313
Jun	740,000	3,844,868	160,000	0	4,744,868
Jul	2,035,000	3,223,500	160,000	0	5,418,500
Aug	555,000	5,629,705	0	0	6,184,705
Sep	222,000	230,250	0	320,000	772,250
Oct	2,283,985	4,021,700	0	64,000	6,369,685
Nov	2,035,000	1,535,000	96,000	0	3,666,000
Dec	555,000	921,000	0	960,000	2,436,000
Total	19,079,742	26,323,651	1,107,298	3,364,000	49,874,691
2008	Premium	Diesel	Kerosene	Jet fuel	Total
Jan	1,110,000	1,228,000	0	0	2,338,000
Feb	0	4,175,200	0	0	4,175,200
Mar	10,923	0	0	2,755	13,678
Apr*	1,433,750	921,000	0	96,000	2,450,750
May	370,000	767,500	0	0	1,137,500
Jun*	2,775,000	3,684,000	0	0	6,459,000
Jul*	370,000	1,535,000	0	0	1,905,000
Aug	3,293,000	4,816,830	0	800,000	8,909,830
Sep	1,295,000	3,782,240	0	1,184,000	6,261,240
Oct	4,671,085	1,780,600	50,817	768,000	7,270,502
Nov	407,000	859,600	0	32,000	1,298,600
Dec	0	0	0	0	0
Total	15,735,758	23,549,970	50,817	2,882,755	42,219,300
2009	Premium	Diesel	Kerosene	Jet fuel	Total
Jan	888,000	460,500	0	0	1,348,500
Feb	3,219,000	2,333,200	0	0	5,552,200
Mar	6,558,773	0	0	460,500	7,019,273
Apr	2,405,000	460,500	0	800,000	3,665,500
May	451,000	728,818	0	64,000	1,243,818
Jun	740,000	2,234,960	0	704,000	3,678,960
Jul	1,541,050	4,808,234	0	704,000	7,053,284
Aug	3,212,094	959,682	0	576,000	4,747,776
Total	19,014,916	11,985,894	0	3,308,500	34,309,310

Source: Ministry of Commerce & Industry and Central Bank of Liberia