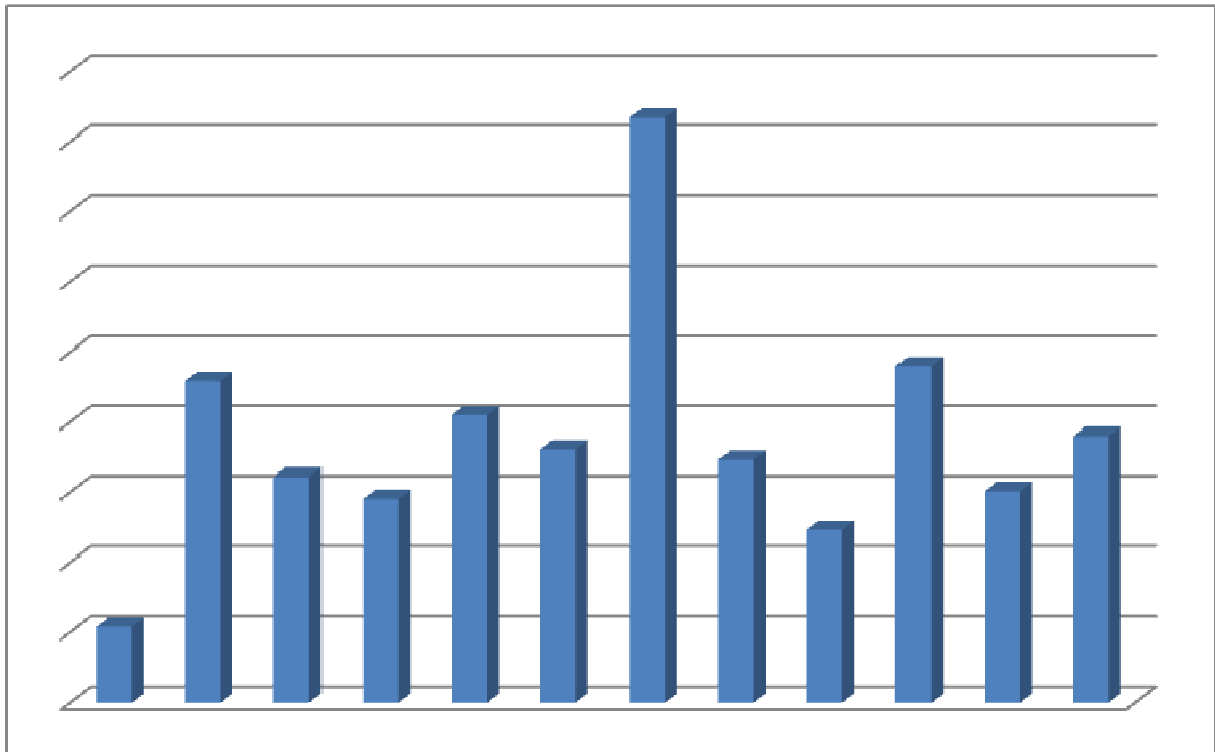




CENTRAL BANK OF LIBERIA



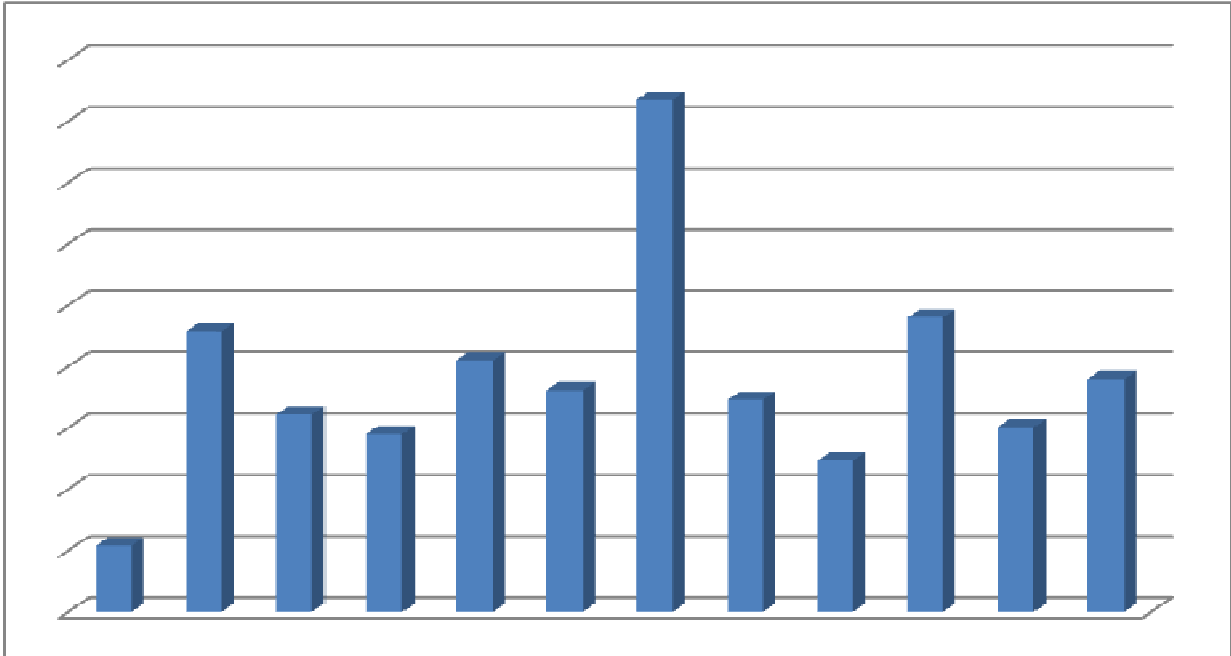
Liberia Financial **STATISTICS**

Vol. 14, No.4
July – August, 2012

Research, Policy and Planning Department
Monrovia, Liberia



CENTRAL BANK OF LIBERIA



Liberia Financial STATISTICS

THE LIBERIA FINANCIAL STATISTICS (LFS) is produced by the Bank's Research, Policy and Planning Department. Inquiries concerning this publication should be addressed to:

**The Director
Research, Policy and Planning Department
Central Bank of Liberia
Warren and Carey Streets
P. O. Box 2048
Monrovia, Liberia**

**Telephone #s: 00(231/886516006/886449833
Fax #s: 00(231) 077059642
Swift :CBLRLRLM**

Table of Contents

<i>INTRODUCTION</i>		-ii-
<i>Statistics</i>		1-53
I <i>MONEY AND BANKING</i>		1-30
1.1a	Depository Corporations Survey – 2010.....	1-2
1.1b	Depository Corporations Survey –2011.....	3-4
1.1c	Depository Corporations Survey -2012.....	5
1.2a	Sectoral Balance Sheet of Other Depository Corp. –2010.....	6-7
1.2b	Sectoral Balance Sheet of Other Depository Corp. –2011.....	8-9
1.2c	Sectoral Balance Sheet of Other Depository Corp. -2012.....	10
1.3a	Sectoral Balance Sheet of Central Bank of Liberia – 2010.....	11-12
1.3b	Sectoral Balance Sheet of Central Bank of Liberia – 2011.....	13-14
1.3c	Sectoral Balance Sheet of Central Bank of Liberia – 2012.....	15
1.4a	Commercial Banks’ Loans by Economic Sectors – 2010.....	16-17
1.4b	Commercial Banks’ Loans by Economic Sectors – 2011-2012.....	18-19
1.4c	Commercial Banks’ Loans by Economic Sectors -2012.....	20
1.5	Commercial Banks’ Interest Rate – 2010-2012.....	21
1.6	Liberian Dollar Exchange Rates – Period Averages – 2010-2012.....	22
1.7	Liberian Dollar Exchange Rates –End of Period – 2010-2012.....	23
1.8	Liberian Dollar Exchange Rates – Jan-Feb, 2012.....	24
1.9	Commercial Banks’ Inflows and Outflows – 2010-2012.....	25
1.10a	Central Bank of Liberia FX Auction – 2010.....	26-27
1.10b	Central Bank of Liberia FX Auction – 2011.....	28-29
1.10c	Central Bank of Liberia FX Auction – 2012.....	30
2	<i>REAL SECTOR</i>	31-46
2.1a	Harmonized Consumer Price Index – 2010.....	31
2.1b	Harmonized Consumer Price Index – 2011.....	32
2.1c	Harmonized Consumer Price Index – 2012.....	33
2.2a	HCPI Inflation Rates – 2010.....	34
2.2b	HCPI Inflation Rates – 2011.....	35
2.2c	HCPI Inflation Rates – 2012.....	36
2.3a	Key Output Volume – 2010.....	37-38
2.3b	Key Output Volume – 2011.....	39-40
2.3c	Key Output Volume –2012.....	41
2.4a	Key Output Value – 2010.....	42-43
2.4b	Key Output Value – 2011.....	44-45
2.4c	Key Output Value –2012.....	46
3	<i>GOVERNMENT FINANCE</i>	47-48
3.1	Government Revenue & Expenditure– 2012-----	47
3.2	Summary Estimates of Liberia’s Public Debt Stock and Status as at Feb. 29, 2012.....	48
4	<i>EXTERNAL TRADE</i>	49-53
4.1	Exports and Imports – 2010-2012.....	49
4.2a	Commodity Composition of Exports – 2010.....	49
4.2b	Commodity Composition of Exports – 2011.....	50
4.2c	Commodity Composition of Exports – 2012.....	50
4.3a	Commodity Composition of Imports – 2010.....	51
4.3b	Commodity Composition of Imports – 2011.....	52
4.3c	Commodity Composition of Imports –2012.....	52
4.4	Volume of Imports of Petroleum Products – 2010-2012.....	53

Introduction

The Liberia Financial Statistics (LFS) remains one of the leading statistical publications of macroeconomic data on the Liberian economy. It contains statistical information on four (4) sectors of the economy, namely: real, monetary, fiscal and external. The LFS, a bi-monthly publication, has served and continue to be one of Liberia's major data providers to the public (researchers, academicians, policymakers, etc).

This publication represents the Fourth (4th) Edition in 2012, and its data coverage ranges from January, 2010 to August, 2012. The cover page of this edition illustrates Liberia monthly export earnings from September, 2011 to August, 2012.

The management of the Central Bank of Liberia (CBL) expresses thanks and appreciation to the many data providers whose collaboration and cooperation culminated into the smooth and timely production of this document. It is the hope of the CBL management that this excellent working relationship will continue to nurture as we strive together in building a strong statistical database for our country.

MONEY AND BANKING

CENTRAL BANK OF LIBERIA

1.1a: Depository Corporations Survey- 2010

Millions of Liberian Dollars

	Jan-10	Feb-10	March-10	April-10	May-10	June-10
Foreign Assets (net)	(45,592.3)	(44,775.8)	(43,989.7)	(42,834.8)	(41,233.1)	17,674.3
Foreign Assets (MA)	28,454.6	28,779.7	27,656.5	27,818.5	27,213.4	28,444.1
(-) Foreign Liabilities (MA)	80,083.7	79,526.2	77,700.5	77,338.6	75,468.9	17,884.4
Foreign Assets (CoB)	6,813.0	6,920.9	6,901.6	7,633.1	7,798.5	8,067.3
(-) Foreign Liabilities (CoB)	776.2	950.2	847.3	947.7	776.2	952.7
Domestic Credit	86,066.5	86,281.4	84,423.5	84,198.1	82,863.3	25,418.0
Claims on General Government (net)	75,026.2	74,957.8	73,569.2	73,189.2	71,798.0	13,887.2
Claims on General Government (MA)	79,610.6	79,306.3	77,668.4	77,391.9	75,963.7	18,906.9
(-) General Government Deposits (MA)	4,899.1	4,676.4	4,447.6	4,411.1	4,375.7	5,284.4
Claims on General Government (CoB)	507.6	500.3	493.4	482.6	482.6	489.4
(-) General Government Deposits (CoB)	192.9	172.4	145.0	274.3	272.6	224.7
Claims on Public Corporations (MA)	0.0	0.0	0.0	0.0	0.0	0.0
Claims on Public Corporations (CoB)	1,565.7	1,566.4	1,679.5	1,942.2	1,873.9	2,038.0
Claims on Private Sector (MA)	123.8	126.8	45.7	44.8	45.3	60.8
Claims on Private Sector (CoB)	9,344.5	9,623.2	9,128.1	9,013.0	9,136.1	9,412.4
Claims on NBFIs (MA)	0.0	0.0	0.0	0.0	0.0	0.0
Claims on NBFIs (CoB)	6.3	7.3	1.0	9.0	10.1	19.7
Money	23,576.9	24,212.5	23,691.6	25,594.0	25,513.3	26,270.6
Currency Outside Banks (MA)	3,738.0	3,790.8	3,761.7	3,531.0	3,544.5	3,598.0
Liberian Currency in Circulation (MA)	4,460.0	4,461.6	4,389.4	4,269.0	4,248.8	4,413.1
(-) Currency Holdings (CoB)	721.9	670.8	627.7	738.0	704.3	815.1
Demand Deposits	13,533.3	14,059.4	13,909.9	15,392.7	15,228.9	15,733.9
Demand Deposits (MA)	790.6	798.9	793.9	818.3	811.3	818.4
Demand Deposits (CoB)	12,742.7	13,260.5	13,116.0	14,574.3	14,417.6	14,915.5
Other Deposits	6,305.6	6,362.2	6,020.0	6,670.4	6,739.9	6,938.8
Other Deposits (MA)	97.1	86.3	73.5	96.6	87.9	73.4
Time and Savings Deposits (CoB)	6,208.5	6,276.0	5,946.6	6,573.8	6,652.1	6,865.4
Bonds and Securities (CoB)	0.0	0.0	0.0	0.0	0.0	0.0
Restricted Deposits	55.8	55.8	55.8	55.8	55.4	55.4
Capital Accounts	25,293.4	25,812.4	24,917.5	25,437.3	25,287.2	25,422.4
Capital Accounts (MA)	18,344.4	18,511.3	18,140.2	18,117.3	18,064.4	18,309.2
Capital Accounts (CoB)	6,949.0	7,301.2	6,777.3	7,319.9	7,222.8	7,113.2
Other Items (net)	(8,354.8)	(8,488.9)	(8,157.6)	(9,627.1)	(9,137.8)	(8,582.8)
Unclassified Liabilities (MA)	9,226.2	9,152.5	9,041.3	9,147.9	8,819.9	9,515.0
(-) Unclassified Assets (MA)	14,981.0	14,876.7	14,617.7	14,554.7	14,210.3	14,381.1
(-) Unclassified Assets (CoB)	5,793.9	5,179.4	4,198.2	4,953.8	5,633.7	5,596.0
Unclassified Liabilities (CoB)	4,200.6	3,371.1	2,618.8	1,904.3	3,088.2	3,065.0
Commercial Banks' Deposits (MA)	5,486.6	6,111.6	5,717.0	5,871.9	6,195.9	5,989.1
(-) Reserves (CoB)	6,174.5	6,662.1	6,189.6	6,701.3	6,634.6	6,644.6
Currency Holdings (CoB)	721.9	670.8	627.7	738.0	704.3	815.1
Liabilities to Central Bank (CoB)	0.0	0.0	0.0	0.0	0.0	0.0
(-) Claims on Domestic Banks (MA)	230.2	248.0	327.4	272.9	652.5	502.5
(-) Claims on Central Bank of Liberia (CoB)	901.2	908.9	896.5	896.5	896.5	905.8
(-) Unbalanced Items	90.8	80.2	67.0	89.9	81.6	62.9
Vertical Check	0.0	(0.0)	(0.0)	(0.0)	(0.0)	(0.0)

NBFIs: Non-Bank Financial Institutions

Source: Central Bank of Liberia, Monrovia, Liberia.

MA = Monetary Authority

CoB = Commercial Banks

MONEY AND BANKING

1.1a: Depository Corporations Survey- 2010 (continued)

Millions of Liberian Dollars

	Jul-10	Aug-10	Sept-10	Oct-10	Nov-10	Dec-10
Foreign Assets (net)	17,132.6	17,503.9	18,450.3	19,664.3	20,307.4	23,629.5
Foreign Assets (MA)	29,033.9	29,801.9	30,353.3	32,542.2	31,812.3	33,388.0
(-) Foreign Liabilities (MA)	18,901.2	18,782.7	19,354.1	19,340.5	18,201.0	19,706.3
Foreign Assets (CoB)	7,888.6	7,345.1	8,225.8	7,393.1	7,542.0	10,957.1
(-) Foreign Liabilities (CoB)	888.6	860.4	774.6	930.4	845.9	1,009.2
Domestic Credit	26,367.9	25,853.8	27,538.8	25,777.3	25,897.7	26,284.9
Claims on General Government (net)	14,310.5	13,439.9	13,984.5	11,923.5	12,067.5	12,013.4
Claims on General Government (MA)	18,969.1	18,969.1	18,969.1	18,782.4	18,222.3	18,720.2
(-) General Government Deposits (MA)	4,960.4	5,553.4	4,974.9	6,848.7	6,094.0	6,519.8
Claims on General Government (CoB)	489.4	489.4	478.5	462.8	448.3	461.2
(-) General Government Deposits (CoB)	187.6	465.2	488.3	473.0	509.0	648.2
Claims on Public Corporations (MA)	0.0	0.0	0.0	0.0	0.0	0.0
Claims on Public Corporations (CoB)	598.1	729.9	739.0	633.9	589.8	500.5
Claims on Private Sector (MA)	163.2	167.7	55.0	57.6	57.5	350.7
Claims on Private Sector (CoB)	11,225.5	11,433.7	12,663.4	13,066.5	13,097.7	13,325.7
Claims on NBFIs (MA)	0.0	0.0	0.0	0.0	0.0	0.0
Claims on NBFIs (CoB)	70.5	82.5	97.0	95.9	85.1	94.7
Money	26,682.2	26,682.2	28,670.3	28,772.5	29,538.5	32,071.2
Currency Outside Banks (MA)	3,831.4	3,671.6	3,795.9	4,013.5	4,337.0	5,007.9
Liberian Currency in Circulation (MA)	4,554.5	4,539.9	4,583.7	4,674.9	4,910.3	5,550.6
(-) Currency Holdings (CoB)	723.1	868.3	787.8	661.4	573.3	542.6
Demand Deposits	15,848.3	16,163.1	17,471.4	16,871.0	16,354.3	19,172.1
Demand Deposits (MA)	843.3	842.4	841.3	934.2	886.3	967.4
Demand Deposits (CoB)	15,005.1	15,320.7	16,630.1	15,936.9	15,468.1	18,204.7
Other Deposits	7,007.5	6,847.5	7,403.0	7,887.9	8,847.1	7,891.2
Other Deposits (MA)	69.1	59.2	37.0	69.8	821.7	318.5
Time and Savings Deposits (CoB)	6,938.4	6,788.4	7,365.9	7,818.1	8,025.4	7,572.7
Bonds and Securities (CoB)	0.0	0.0	0.0	0.0	0.0	0.0
Restricted Deposits	55.4	53.9	53.9	53.9	53.9	53.2
Capital Accounts	25,551.4	25,547.7	26,189.8	26,072.5	25,137.5	26,567.0
Capital Accounts (MA)	18,387.9	18,374.9	18,434.0	18,202.7	17,236.6	17,406.5
Capital Accounts (CoB)	7,163.6	7,172.8	7,755.8	7,869.8	7,900.9	9,160.5
Other Items (net)	(8,724.4)	(8,867.0)	(8,887.9)	(9,387.5)	(7,703.1)	(8,458.5)
Unclassified Liabilities (MA)	9,695.5	9,573.7	9,829.6	9,813.8	9,306.9	9,772.2
(-) Unclassified Assets (MA)	14,797.6	14,715.8	15,266.3	15,258.1	14,242.2	14,616.6
(-) Unclassified Assets (CoB)	5,315.7	5,518.7	5,555.7	5,801.3	5,831.1	5,773.4
Unclassified Liabilities (CoB)	3,031.6	3,180.4	3,406.5	3,175.0	3,636.4	3,534.4
Commercial Banks' Deposits (MA)	5,942.7	6,228.4	6,870.1	6,984.8	7,115.0	7,437.2
(-) Reserves (CoB)	6,754.7	7,317.1	7,790.4	7,887.6	7,957.4	8,209.6
Currency Holdings (CoB)	723.1	868.3	787.8	661.4	573.3	542.6
Liabilities to Central Bank (CoB)	0.0	0.0	0.0	0.0	0.0	53.6
(-) Claims on Domestic Banks (MA)	398.8	312.5	293.5	241.9	250.4	615.6
(-) Claims on Central Bank of Liberia (CoB)	908.9	906.5	906.5	897.3	869.5	895.6
(-) Unbalanced Items	58.2	52.8	30.6	63.8	815.7	312.4
Vertical Check	(0.0)	0.0	0.0	(0.0)	0.0	(0.0)

NBFIs: Non-Bank Financial Institutions

Source: Central Bank of Liberia, Monrovia, Liberia.

MONEY AND BANKING

1.1b: Depository Corporations Survey - 2011

Millions of Liberian Dollars

	Jan-11	Feb-11	Mar-11	Apr-11	May-11	Jun-11
Foreign Assets (net)	22,475.0	21,539.7	22,015.0	22,571.8	25,146.2	22,892.3
Foreign Assets (MA)	34,091.0	33,391.4	33,806.4	34,455.9	36,120.2	35,660.7
(-) Foreign Liabilities (MA)	20,253.8	20,321.3	20,404.4	20,986.1	20,735.6	20,800.5
Foreign Assets (CoB)	9,699.2	9,719.0	9,894.2	10,510.7	11,157.5	9,418.0
(-) Foreign Liabilities (CoB)	1,061.4	1,249.4	1,281.2	1,408.6	1,395.9	1,386.0
Domestic Credit	26,660.1	27,936.0	28,137.5	28,892.9	28,086.6	29,516.2
Claims on General Government (net)	11,562.9	12,484.5	12,460.0	12,774.5	11,759.2	13,135.5
Claims on General Government (MA)	18,969.6	18,907.5	18,845.3	18,969.4	18,968.7	19,094.2
(-) General Government Deposits (MA)	7,214.7	6,208.7	6,035.9	5,731.9	6,709.5	5,390.4
Claims on General Government (CoB)	467.6	455.2	453.6	456.8	445.9	448.9
(-) General Government Deposits (CoB)	659.6	669.6	803.0	919.8	945.9	1,017.3
Claims on Public Corporations (MA)	0.0	0.0	0.0	0.0	0.0	0.0
Claims on Public Corporations (CoB)	920.1	845.3	886.3	860.8	853.6	893.0
Claims on Private Sector (MA)	362.5	363.8	353.2	357.0	357.1	359.8
Claims on Private Sector (CoB)	13,744.7	14,189.1	14,365.9	14,808.1	15,007.9	14,990.9
Claims on NBFIs (MA)	0.0	0.0	0.0	0.0	0.0	0.0
Claims on NBFIs (CoB)	69.9	53.2	72.2	92.6	108.9	137.1
Money	31,523.4	31,672.1	32,697.8	33,718.9	35,272.5	35,666.9
Currency Outside Banks (MA)	4,615.5	4,583.4	4,726.9	4,809.2	4,700.5	4,924.6
Liberian Currency in Circulation (MA)	5,496.0	5,528.1	5,605.9	5,653.9	5,626.1	5,647.3
(-) Currency Holdings (CoB)	880.5	944.8	879.0	844.7	925.6	722.7
Demand Deposits	18,844.3	18,491.2	18,789.7	19,503.7	20,993.1	20,725.8
Demand Deposits (MA)	971.0	1,007.0	1,020.8	1,024.3	1,042.7	1,073.5
Demand Deposits (CoB)	17,873.3	17,484.2	17,768.9	18,479.3	19,950.4	19,652.3
Other Deposits	8,063.7	8,597.5	9,181.2	9,406.1	9,579.0	10,016.6
Other Deposits (MA)	122.8	27.7	224.2	172.9	124.1	93.0
Time and Savings Deposits (CoB)	7,940.8	8,569.8	8,957.0	9,233.2	9,454.9	9,923.5
Bonds and Securities (CoB)	0.0	0.0	0.0	0.0	0.0	0.0
Restricted Deposits	53.2	52.8	52.8	52.8	52.8	52.8
Capital Accounts	26,917.3	27,311.4	26,973.2	27,442.0	27,068.3	26,826.0
Capital Accounts (MA)	17,694.6	17,550.5	17,412.5	17,792.4	17,466.9	17,677.0
Capital Accounts (CoB)	9,222.7	9,760.9	9,560.8	9,649.5	9,601.4	9,148.9
Other Items (net)	(9,236.0)	(9,532.9)	(9,347.1)	(9,576.0)	(9,036.7)	(10,044.3)
Unclassified Liabilities (MA)	9,513.1	9,603.2	9,816.8	9,906.2	9,857.5	9,868.4
(-) Unclassified Assets (MA)	15,027.6	15,077.4	15,154.4	15,764.4	15,583.0	15,665.5
(-) Unclassified Assets (CoB)	6,267.0	6,072.1	6,240.9	6,626.9	6,379.0	6,490.4
Unclassified Liabilities (CoB)	4,224.6	3,911.3	4,004.3	4,498.6	4,246.8	4,002.4
Commercial Banks' Deposits (MA)	7,779.8	8,128.2	8,493.5	8,856.0	10,079.8	10,860.5
(-) Reserves (CoB)	9,063.0	9,550.2	9,703.8	10,069.5	10,878.8	11,989.2
Currency Holdings (CoB)	880.5	944.8	879.0	844.7	925.6	722.7
Liabilities to Central Bank (CoB)	108.8	108.4	108.0	108.8	108.8	109.5
(-) Claims on Domestic Banks (MA)	607.7	647.3	867.2	586.0	625.6	643.0
(-) Claims on Central Bank of Liberia (CoB)	894.2	903.4	900.4	906.5	906.5	906.5
(-) Unbalanced Items	116.8	21.6	217.9	163.0	117.9	86.8
Vertical Check	0.0	0.0	0.0	0.0	(0.0)	0.0

NBFI: Non-Bank Financial Institutions

Source: Central Bank of Liberia, Monrovia, Liberia.

MONEY AND BANKING

1.1b: Depository Corporations Survey - 2011- Continued*Millions of Liberian Dollars*

	Jul-11	Aug-11	Sep-11	Oct-11	Nov-11	Dec-11
Foreign Assets (net)	24,209.4	24,288.7	24,705.0	23,287.9	22,546.8	26,814.5
Foreign Assets (MA)	35,704.5	36,292.2	35,876.0	35,589.4	35,391.8	37,963.0
(-) Foreign Liabilities (MA)	20,681.6	20,807.8	20,664.1	20,664.3	20,545.7	20,832.7
Foreign Assets (CoB)	10,379.9	10,012.7	10,200.7	9,146.8	8,521.3	10,723.2
(-) Foreign Liabilities (CoB)	1,193.4	1,208.3	707.7	784.0	820.7	1,039.0
Domestic Credit	30,187.4	30,212.8	31,834.9	32,321.2	33,252.2	34,458.6
Claims on General Government (net)	13,936.3	13,204.8	14,412.1	14,153.5	14,964.8	15,283.3
Claims on General Government (MA)	18,969.7	18,969.3	18,845.4	18,852.3	18,727.7	18,976.7
(-) General Government Deposits (MA)	4,526.3	5,371.7	4,134.9	4,278.5	3,299.1	3,100.9
Claims on General Government (CoB)	445.9	445.9	500.3	439.7	442.8	424.2
(-) General Government Deposits (CoB)	953.0	838.6	798.7	863.0	903.6	1,016.7
Claims on Public Corporations (MA)	0.0	0.0	0.0	0.0	0.0	0.0
Claims on Public Corporations (CoB)	780.9	958.3	1,080.2	719.3	692.3	719.2
Claims on Private Sector (MA)	357.7	361.4	360.2	346.4	214.0	421.6
Claims on Private Sector (CoB)	14,977.5	15,542.9	15,880.6	16,985.8	17,289.3	17,934.2
Claims on NBFIs (MA)	0.0	0.0	0.0	0.0	0.0	0.0
Claims on NBFIs (CoB)	135.0	145.4	101.9	116.1	91.8	100.4
Money	36,214.7	36,583.8	40,737.4	41,022.0	41,038.2	44,634.6
Currency Outside Banks (MA)	5,071.8	5,026.5	5,124.3	5,463.4	6,022.4	6,704.3
Liberian Currency in Circulation (MA)	5,660.9	5,696.2	5,710.5	5,958.0	6,534.8	7,251.6
(-) Currency Holdings (CoB)	589.1	669.7	586.2	494.5	512.4	547.3
Demand Deposits	20,967.5	21,765.3	23,527.7	23,938.0	23,341.4	24,601.1
Demand Deposits (MA)	1,062.8	1,112.4	1,088.4	1,178.5	1,215.1	1,236.4
Demand Deposits (CoB)	19,904.6	20,652.8	22,439.3	22,759.5	22,126.3	23,364.7
Other Deposits	10,175.4	9,792.1	12,085.4	11,620.5	11,674.3	13,329.2
Other Deposits (MA)	80.9	(411.9)	1,062.4	136.9	114.9	1,973.4
Time and Savings Deposits (CoB)	10,094.5	10,204.0	11,023.0	11,483.7	11,559.5	11,355.8
Bonds and Securities (CoB)	0.0	0.0	0.0	0.0	0.0	0.0
Restricted Deposits	52.8	51.7	51.7	54.1	54.1	54.1
Capital Accounts	26,790.3	27,447.1	27,252.1	27,191.9	27,110.5	26,913.6
Capital Accounts (MA)	17,546.6	17,489.5	17,260.9	17,170.8	17,102.0	16,732.6
Capital Accounts (CoB)	9,243.7	9,957.6	9,991.1	10,021.1	10,008.4	10,181.0
Other Items (net)	(8,580.1)	(9,993.0)	(10,438.8)	(12,522.1)	(12,288.8)	(8,355.8)
Unclassified Liabilities (MA)	10,782.3	10,851.4	10,789.4	10,572.0	10,572.0	11,453.5
(-) Unclassified Assets (MA)	15,579.3	15,676.5	16,100.9	16,084.2	16,041.8	16,216.7
(-) Unclassified Assets (CoB)	6,400.9	6,843.2	8,890.3	10,885.3	10,999.3	8,824.9
Unclassified Liabilities (CoB)	4,252.0	4,174.6	4,668.9	5,237.1	5,902.5	5,311.0
Commercial Banks' Deposits (MA)	10,904.1	11,071.4	11,149.2	11,304.8	11,654.6	11,914.6
(-) Reserves (CoB)	11,757.4	12,323.2	12,215.7	12,095.9	12,536.2	12,780.4
Currency Holdings (CoB)	589.1	669.7	586.2	494.5	512.4	547.3
Liabilities to Central Bank (CoB)	108.8	108.8	108.0	107.3	107.3	108.8
(-) Claims on Domestic Banks (MA)	647.0	701.9	689.7	653.0	675.4	930.6
(-) Claims on Central Bank of Liberia (CoB)	906.5	906.0	899.8	899.8	893.6	906.0
(-) Unbalanced Items	74.7	(418.0)	1,056.1	130.8	108.6	1,967.6
Vertical Check	(0.0)	(0.0)	0.0	(0.0)	0.0	0.0

NBFI: Non-Bank Financial Institutions

Source: Central Bank of Liberia, Monrovia, Liberia.

MONEY AND BANKING

CENTRAL BANK OF LIBERIA

1.1c: Depository Corporations Survey - 2012

Millions of Liberian Dollars

	Jan-12	Feb-12	Mar-12	Apr-12	May-12	Jun-12	Jul-12	Aug-12
Foreign Assets (net)	27,538.9	26,345.9	27,469.0	26,215.5	25,244.0	25,546.0	23,371.7	23,719.6
Foreign Assets (MA)	39,000.0	38,195.1	38,970.8	39,755.2	39,613.2	37,821.8	36,420.3	34,847.2
(-) Foreign Liabilities (MA)	21,103.9	21,104.0	21,247.4	21,261.9	21,822.0	21,391.0	21,103.9	19,961.0
Foreign Assets (CoB)	10,404.8	11,847.6	12,626.2	10,353.5	10,043.3	11,609.9	10,525.0	11,313.1
(-) Foreign Liabilities (CoB)	762.0	2,592.7	2,880.6	2,631.2	2,590.6	2,494.7	2,469.7	2,479.7
Domestic Credit	33,489.3	34,764.6	34,516.3	33,845.5	37,126.0	35,785.9	36,352.0	33,528.9
Claims on General Government (net)	13,683.1	14,489.2	13,830.3	12,915.8	14,947.0	14,376.4	14,990.0	11,842.7
Claims on General Government (MA)	19,225.4	19,226.1	19,350.3	19,350.3	19,848.4	20,964.7	20,695.8	20,696.2
(-) General Government Deposits (MA)	4,933.7	4,098.5	4,816.8	5,736.3	4,116.5	5,679.7	4,818.6	4,462.1
Claims on General Government (CoB)	430.0	416.1	421.8	421.8	421.8	413.5	402.4	402.4
(-) General Government Deposits (CoB)	1,038.6	1,054.5	1,125.0	1,120.0	1,206.7	1,322.1	1,289.6	4,793.8
Claims on Public Corporations (MA)	0.0	0.0	0.0	0.0	0.0	0.0	0.0	0.0
Claims on Public Corporations (CoB)	1,053.9	1,187.5	1,279.3	1,264.6	1,354.9	1,457.0	1,484.5	1,503.2
Claims on Private Sector (MA)	426.0	341.5	345.1	347.3	361.2	354.9	96.3	102.0
Claims on Private Sector (CoB)	18,238.4	18,660.6	18,946.9	19,203.3	20,353.8	19,484.5	19,575.9	19,936.1
Claims on NBFIs (MA)	0.0	0.0	0.0	0.0	0.0	0.0	0.0	0.0
Claims on NBFIs (CoB)	87.8	85.8	114.7	114.5	108.9	113.0	205.4	144.3
Money	43,180.9	41,669.9	38,975.8	41,410.4	42,906.4	42,424.3	40,524.5	41,160.0
Currency Outside Banks (MA)	6,157.1	6,091.6	6,094.3	5,908.7	6,021.0	5,778.0	5,493.7	5,302.2
Liberian Currency in Circulation (MA)	7,144.4	7,263.5	7,339.6	7,354.7	7,296.7	7,173.5	7,069.7	6,929.6
(-) Currency Holdings (CoB)	987.3	1,171.8	1,245.3	1,446.0	1,275.7	1,395.5	1,576.1	1,627.4
Demand Deposits	24,427.4	23,431.7	20,827.1	23,393.5	24,566.2	24,451.7	23,005.9	22,480.5
Demand Deposits (MA)	1,253.1	1,319.0	1,351.4	1,366.8	343.9	355.6	219.7	259.5
Demand Deposits (CoB)	23,174.3	22,112.7	19,475.7	22,026.6	24,222.3	24,096.2	22,786.2	22,221.0
Other Deposits	12,596.5	12,146.6	12,054.4	12,108.2	12,319.1	12,194.6	12,025.0	13,383.3
Other Deposits (MA)	290.1	287.8	312.7	272.2	278.5	308.7	164.5	63.4
Time and Savings Deposits (CoB)	12,306.4	11,858.8	11,741.7	11,836.0	12,040.7	11,885.9	11,860.5	13,320.0
Bonds and Securities (CoB)	0.0	0.0	0.0	0.0	0.0	0.0	0.0	0.0
Restricted Deposits	48.1	47.6	47.6	46.8	46.3	45.7	45.3	44.5
Capital Accounts	27,494.5	27,565.8	27,581.9	27,497.6	28,788.6	27,975.4	27,361.7	27,169.6
Capital Accounts (MA)	16,963.1	16,980.5	17,016.6	16,830.4	17,729.4	16,961.8	16,478.9	16,390.3
Capital Accounts (CoB)	10,531.4	10,585.3	10,565.3	10,667.2	11,059.2	11,013.7	10,882.8	10,779.3
Other Items (net)	(9,405.2)	(7,885.0)	(4,307.3)	(8,621.5)	(9,092.8)	(8,804.9)	(8,043.2)	(11,068.2)
Unclassified Liabilities (MA)	11,691.6	11,616.3	11,746.8	11,606.6	12,470.9	12,342.4	12,177.9	11,650.9
(-) Unclassified Assets (MA)	16,406.4	16,567.4	16,621.0	16,628.8	17,044.4	17,239.2	17,145.1	16,414.1
(-) Unclassified Assets (CoB)	9,981.7	8,656.5	8,115.3	8,145.4	7,704.9	10,083.3	9,738.7	9,335.1
Unclassified Liabilities (CoB)	6,994.8	7,199.6	9,612.7	6,084.3	5,491.1	8,222.4	8,457.6	4,743.7
Commercial Banks' Deposits (MA)	12,318.1	12,309.0	12,267.6	12,372.1	13,617.6	13,125.4	12,971.5	13,053.6
(-) Reserves (CoB)	13,831.1	13,768.5	13,110.9	14,075.8	15,920.3	15,185.5	15,132.4	15,021.9
Currency Holdings (CoB)	987.3	1,171.8	1,245.3	1,446.0	1,275.7	1,395.5	1,576.1	1,627.4
Liabilities to Central Bank (CoB)	110.3	109.5	111.0	111.0	220.2	216.5	210.7	212.2
(-) Claims on Domestic Banks (MA)	652.3	661.3	824.3	732.1	820.8	955.5	649.8	714.1
(-) Claims on Central Bank of Liberia (CoB)	919.3	919.3	925.5	925.5	950.2	931.7	919.3	919.3
(-) Unbalanced Items	283.6	281.7	306.3	266.0	272.3	288.2	148.5	48.4
Vertical Check	(0.0)	0.0	(0.0)	(0.0)	(0.0)	(0.0)	(0.0)	(0.0)

NBFIs: Non-Bank Financial Institutions

Source: Central Bank of Liberia, Monrovia, Liberia.

MONEY AND BANKING

CENTRAL BANK OF LIBERIA

1.2a: Sectoral Balance Sheet of Other Depository Corporations - 2010

Thousands of Liberian Dollars

	Jan-10	Feb-10	Mar-10	Apr-10	May-10	Jun-10
Assets						
Reserves	6,174,491	6,662,125	6,189,634	6,701,321	6,634,582	6,644,633
<i>of which: Cash on Hand: Coins/LD Notes</i>	721,935	670,770	627,673	737,980	704,254	815,142
Foreign Assets	6,813,003	6,920,877	6,901,645	7,633,061	7,798,525	8,067,344
Claims on General Government	507,600	500,250	493,351	482,625	482,625	489,375
Claims on Public Corporations	1,565,742	1,566,420	1,679,494	1,942,152	1,873,860	2,037,954
Claims on Private Sector	9,344,520	9,623,164	9,128,124	9,012,991	9,136,053	9,412,419
Claims on Central Bank of Liberia	901,184	908,862	896,505	896,505	896,505	905,773
Claims on NBFIs	6,303	7,254	1,017	8,986	10,113	19,657
Unclassified Assets	5,793,903	5,179,401	4,198,236	4,953,777	5,633,739	5,595,950
Total Assets	31,106,746	31,368,354	29,488,007	31,631,419	32,466,002	33,173,106
	Jan-10	Feb-10	Mar-10	Apr-10	May-10	Jun-10
Liabilities						
Demand Deposits	12,742,665	13,260,481	13,115,999	14,574,345	14,417,562	14,915,456
Time and Savings Deposits	6,208,487	6,275,991	5,946,575	6,573,774	6,652,052	6,865,423
Restricted Deposits	36,980	36,985	36,985	36,985	36,632	36,632
Bonds and Securities	0	0	0	0	0	0
Foreign Liabilities	776,192	950,230	847,345	947,710	776,157	952,681
Government Deposits	192,909	172,398	144,965	274,327	272,563	224,680
Liabilities to Central Bank of Liberia	0	0	0	0	0	0
Capital Accounts	6,948,961	7,301,168	6,777,349	7,319,944	7,222,814	7,113,195
Unclassified Liabilities	4,200,553	3,371,101	2,618,790	1,904,333	3,088,221	3,065,040
Total Liabilities	31,106,746	31,368,354	29,488,007	31,631,419	32,466,002	33,173,106
Vertical Check (Assets/Liabilities)	0	0	0	0	0	0

NBFIs: Non-Bank Financial Institutions

Source : Central Bank of Liberia, Monrovia, Liberia.

MONEY AND BANKING

CENTRAL BANK OF LIBERIA

1.2a: Sectoral Balance Sheet of Other Depository Corporations - 2010

Thousands of Liberian Dollars

	Jul-10	Aug-10	Sep-10	Oct-10	Nov-10	Dec-10
Assets						
Reserves	6,754,660	7,317,092	7,790,393	7,887,626	7,957,353	8,209,588
<i>of which: Cash on Hand: Coins/LD Notes</i>	723,091	868,284	787,797	661,389	573,316	542,617
Foreign Assets	7,888,644	7,345,057	8,225,803	7,393,100	7,541,972	10,957,067
Claims on General Government	489,375	489,375	478,500	462,788	448,279	461,179
Claims on Public Corporations	598,135	729,937	738,980	633,914	589,845	500,477
Claims on Private Sector	11,225,520	11,433,728	12,663,390	13,066,475	13,097,722	13,325,657
Claims on Central Bank of Liberia	908,862	906,538	906,538	897,270	869,466	895,611
Claims on NBFIs	70,521	82,508	96,968	95,854	85,121	94,698
Unclassified Assets	5,315,690	5,518,703	5,555,718	5,801,346	5,831,144	5,773,423
Total Assets	33,251,407	33,822,938	36,456,290	36,238,372	36,420,903	40,217,700
	Jul-10	Aug-10	Sep-10	Oct-10	Nov-10	Dec-10
Liabilities						
Demand Deposits	15,005,053	15,320,742	16,630,139	15,936,873	15,468,096	18,204,714
Time and Savings Deposits	6,938,369	6,788,358	7,365,935	7,818,103	8,025,396	7,572,695
Restricted Deposits	36,632	35,127	35,127	35,127	35,127	34,412
Bonds and Securities	0	0	0	0	0	0
Foreign Liabilities	888,647	860,355	774,611	930,449	845,875	1,009,242
Government Deposits	187,588	465,153	488,256	473,000	509,034	648,156
Liabilities to Central Bank of Liberia	0	0	0	0	0	53,625
Capital Accounts	7,163,557	7,172,844	7,755,768	7,869,835	7,900,944	9,160,492
Unclassified Liabilities	3,031,561	3,180,358	3,406,454	3,174,984	3,636,431	3,534,364
Total Liabilities	33,251,407	33,822,938	36,456,290	36,238,372	36,420,903	40,217,700
Vertical Check (Assets/Liabilities)	0	0	0	0	0	0

NBFIs: Non-Bank Financial Institutions

Source: Central Bank of Liberia, Monrovia, Liberia.

MONEY AND BANKING

CENTRAL BANK OF LIBERIA

1.2b: Sectoral Balance Sheet of Other Depository Corporations - 2011

Thousands of Liberian Dollars

	Jan-11	Feb-11	Mar-11	Apr-11	May-11	Jun-11
Assets						
Reserves	9,062,971	9,550,168	9,703,791	10,069,503	10,878,778	11,989,158
<i>of which: Cash on Hand: Coins/LD Notes</i>	880,544	944,753	878,989	844,650	925,569	722,668
Foreign Assets	9,699,204	9,719,014	9,894,163	10,510,723	11,157,492	9,418,032
Claims on General Government	467,629	455,179	453,604	456,754	445,868	448,943
Claims on Public Corporations	920,094	845,350	886,256	860,792	853,552	892,970
Claims on Private Sector	13,744,667	14,189,133	14,365,887	14,808,125	15,007,944	14,990,876
Claims on Central Bank of Liberia	894,181	903,444	900,355	906,533	906,533	906,533
Claims on NBFIs	69,930	53,184	72,219	92,601	108,889	137,074
Unclassified Assets	6,266,966	6,072,065	6,240,852	6,626,870	6,379,001	6,490,429
Total Assets	41,125,641	41,787,536	42,517,127	44,331,901	45,738,058	45,274,015
	Jan-11	Feb-11	Mar-11	Apr-11	May-11	Jun-11
Liabilities						
Demand Deposits	17,873,259	17,484,231	17,768,882	18,479,321	19,950,355.38	19,652,319.21
Time and Savings Deposits	7,940,847	8,569,758	8,956,965	9,233,199	9,454,912.80	9,923,518.95
Restricted Deposits	34,412	34,412	34,011	34,011	34,011	34,011
Bonds and Securities	0	0	0	0	0	0
Foreign Liabilities	1,061,444	1,249,368	1,281,198	1,408,623	1,395,941	1,386,014
Government Deposits	659,629	669,578	803,022	919,812	945,934	1,017,293
Liabilities to Central Bank of Liberia	108,750	108,375	108,000	108,750	108,750	109,500
Capital Accounts	9,222,734	9,760,904	9,560,758	9,649,546	9,601,369	9,148,945
Unclassified Liabilities	4,224,566	3,911,311	4,004,290	4,498,639	4,246,785	4,002,413
Total Liabilities	41,125,641	41,787,536	42,517,127	44,331,901	45,738,058	45,274,015
Vertical Check (Assets/Liabilities)	0	0	0	0	0	0

NBFIs: Non-Bank Financial Institutions

Source : Central Bank of Liberia, Monrovia, Liberia.

MONEY AND BANKING

CENTRAL BANK OF LIBERIA

1.2b: Sectoral Balance Sheet of Other Depository Corporations - 2011- Continued- 2012

Thousands of Liberian Dollars

	Jul-11	Aug-11	Sep-11	Oct-11	Nov-11	Dec-11
Assets						
Reserves	11,757,383	12,323,153	12,215,703	12,095,888	12,536,166	12,780,443
<i>of which: Cash on Hand: Coins/LD Notes</i>	589,080	669,717	586,191	494,536	512,400	547,305
Foreign Assets	10,379,895	10,012,656	10,200,699	9,146,767	8,521,327	10,723,187
Claims on General Government	445,868	445,868	500,348	442,818	439,743	424,154
Claims on Public Corporations	780,927	958,317	1,080,184	719,280	692,313	719,226
Claims on Private Sector	14,977,487	15,542,879	15,880,600	16,985,835	17,289,277	17,934,205
Claims on Central Bank of Liberia	906,533	905,956	899,777	899,777	893,598	905,956
Claims on NBFIs	134,987	145,432	101,875	116,122	91,821	100,355
Unclassified Assets	6,400,898	6,843,227	8,890,325	10,885,251	10,999,307	8,824,880
Total Assets	45,783,979	47,177,489	49,769,512	51,291,738	51,463,552	52,412,405
	Jul-11	Aug-11	Sep-11	Oct-11	Nov-11	Dec-11
Liabilities						
Demand Deposits	19,904,640.35	20,652,821.98	22,439,299.53	22,759,475.57	22,126,282	23,364,708
Time and Savings Deposits	10,094,496.04	10,203,973.70	11,022,975.98	11,483,680.58	11,559,461	11,355,848
Restricted Deposits	34,011	32,900	32,900	35,330	35,330	35,330
Bonds and Securities	0	0	0	0	0	0
Foreign Liabilities	1,193,357	1,208,337	707,665	784,004	820,686	1,039,036
Government Deposits	953,032	838,572	798,687	863,046	903,591	1,016,679
Liabilities to Central Bank of Liberia	108,750	108,750	108,000	108,000	107,250	108,750
Capital Accounts	9,243,710	9,957,570	9,991,132	10,021,097	10,008,405	10,181,041
Unclassified Liabilities	4,251,983	4,174,563	4,668,853	5,237,104	5,902,547	5,311,013
Total Liabilities	45,783,979	47,177,489	49,769,512	51,291,738	51,463,552	52,412,405
Vertical Check (Assets/Liabilities)	0	0	0	0	0	0

NBFIs: Non-Bank Financial Institutions

Source : Central Bank of Liberia, Monrovia, Liberia.

MONEY AND BANKING

CENTRAL BANK OF LIBERIA

1.2c: Sectoral Balance Sheet of Other Depository Corporations - 2012

Thousands of Liberian Dollars

	Apr-12	May-12	Jun-12	Jul-12	Aug-12
Assets					
Reserves	14,075,764	15,920,324	15,185,457	15,132,416	15,021,916
<i>of which: Cash on Hand: Coins/LD Notes</i>	1,445,990	1,275,685	1,395,454	1,576,057	1,627,401
Foreign Assets	10,353,460	10,043,327	11,609,922	10,525,035	11,313,088
Claims on General Government	421,824	421,825	413,501	402,400	402,401
Claims on Public Corporations	1,264,635	1,354,950	1,456,990	1,484,517	1,503,178
Claims on Private Sector	19,203,253	20,353,837	19,484,480	19,575,871	19,936,134
Claims on Central Bank of Liberia	925,500	950,214	931,678	919,321	919,321
Claims on NBFIs	114,525	108,947	113,028	205,387	144,348
Unclassified Assets	8,145,362	7,704,897	10,083,288	9,738,715	9,335,069
Total Assets	54,504,320	56,858,321	59,278,344	57,983,662	58,575,455
	Apr-12	May-12	Jun-12	Jul-12	Aug-12
Liabilities					
Demand Deposits	22,026,608	24,222,299	24,096,153	22,786,193	22,221,006
Time and Savings Deposits	11,835,954	12,040,651	11,885,860	11,860,501	13,319,971
Restricted Deposits	28,028	27,564	26,906	26,494	25,695
Bonds and Securities	0	0	0	0	0
Foreign Liabilities	2,631,190	2,590,570	2,494,737	2,469,716	2,479,710
Government Deposits	1,120,003	1,206,730	1,322,119	1,289,620	4,793,803
Liabilities to Central Bank of Liberia	111,000	220,154	216,512	210,743	212,230
Capital Accounts	10,667,231	11,059,206	11,013,681	10,882,784	10,779,301
Unclassified Liabilities	6,084,307	5,491,148	8,222,377	8,457,612	4,743,740
Total Liabilities	54,504,320	56,858,321	59,278,344	57,983,662	58,575,455
Vertical Check (Assets/Liabilities)	0	0	0	0	0

NBFIs: Non-Bank Financial Institutions

Source: Central Bank of Liberia, Monrovia, Liberia.

MONEY AND BANKING

CENTRAL BANK OF LIBERIA

1.3a: Sectoral Balance Sheet of Central Bank of Liberia - 2010
Thousands of Liberian Dollars

	Jan-10	Feb-10	March-10	April-10	May-10	June-10
Assets						
Foreign Assets	28,454,558	28,779,711	27,656,483	27,818,496	27,213,432	28,444,068
Claims on General Government	79,610,570	79,306,270	77,668,378	77,391,918	75,963,664	18,906,897
Claims on Public Corporations	0	0	0	0	0	0
Claims on Private Sector	123,764	126,774	45,740	44,847	45,256	60,761
Claims on Domestic Banks	230,175	248,029	327,362	272,935	652,458	502,458
Claims on NBFIs	0	0	0	0	0	0
Unclassified Assets	14,981,011	14,876,660	14,617,682	14,554,687	14,210,329	14,381,142
Total Assets	123,400,078	123,337,445	120,315,646	120,082,883	118,085,139	62,295,326
	Jan-10	Feb-10	March-10	April-10	May-10	June-10
Liabilities						
Reserve Money	10,827,951	11,452,356	10,967,263	11,049,159	11,337,501	11,283,522
Other Deposits	0	0	0	0	0	0
Restricted Reserves	18,781	18,781	18,781	18,781	18,781	18,781
Foreign Liabilities	80,083,679	79,526,178	77,700,494	77,338,640	75,468,893	17,884,448
Liabilities to General Government	4,899,058	4,676,364	4,447,603	4,411,052	4,375,688	5,284,434
Capital Accounts	18,344,443	18,511,259	18,140,166	18,117,314	18,064,358	18,309,178
Unclassified Liabilities	9,226,166	9,152,506	9,041,338	9,147,937	8,819,919	9,514,963
Total Liabilities	123,400,078	123,337,445	120,315,646	120,082,883	118,085,139	62,295,326
Vertical Check (Assets/Liabilities)	(0)	0	0	0	0	0

NBFIs: Non-Bank Financial Institutions

Source : Central Bank of Liberia, Monrovia, Liberia.

MONEY AND BANKING

CENTRAL BANK OF LIBERIA

1.3a: Sectoral Balance Sheet of Central Bank of Liberia - 2010 (continued)

Thousands of Liberian Dollars

	Jul-10	Aug-10	Sep-10	Oct-10	Nov-10	Dec-10
Assets						
Foreign Assets	29,033,901	29,801,853	30,353,272	32,542,189	31,812,287	33,388,024
Claims on General Government	18,969,127	18,969,127	18,969,127	18,782,430	18,222,341	18,720,198
Claims on Public Corporations	0	0	0	0	0	0
Claims on Private Sector	163,217	167,736	54,986	57,564	57,463	350,667
Claims on Domestic Banks	398,767	312,480	293,465	241,882	250,354	615,641
Claims on NBFIs	0	0	0	0	0	0
Unclassified Assets	14,797,555	14,715,792	15,266,309	15,258,098	14,242,158	14,616,567
Total Assets	63,362,566	63,966,987	64,937,158	66,882,163	64,584,604	67,691,098
	Jul-10	Aug-10	Sep-10	Oct-10	Nov-10	Dec-10
Liabilities						
Reserve Money	11,398,766	11,663,517	12,325,689	12,657,632	13,727,287	14,267,497
Other Deposits	0	0	0	0	0	0
Restricted Reserves	18,781	18,781	18,781	18,781	18,781	18,781
Foreign Liabilities	18,901,249	18,782,685	19,354,131	19,340,528	18,200,987	19,706,304
Liabilities to General Government	4,960,449	5,553,434	4,974,899	6,848,734	6,094,037	6,519,838
Capital Accounts	18,387,867	18,374,853	18,434,033	18,202,695	17,236,590	17,406,510
Unclassified Liabilities	9,695,455	9,573,716	9,829,626	9,813,795	9,306,921	9,772,168
Total Liabilities	63,362,566	63,966,987	64,937,158	66,882,164	64,584,604	67,691,098
Vertical Check (Assets/Liabilities)	0	0	0	0	0	0

NBFIs: Non-Bank Financial Institutions

Source: Central Bank of Liberia, Monrovia, Liberia.

MONEY AND BANKING

CENTRAL BANK OF LIBERIA

1.3b: Sectoral Balance Sheet of Central Bank of Liberia - 2011

Thousands of Liberian Dollars

	Jan-11	Feb-11	Mar-11	Apr-11	May-11	Jun-11
Assets						
Foreign Assets	34,090,999	33,391,377	33,806,417	34,455,851	36,120,242	35,660,715
Claims on General Government	18,969,588	18,907,536	18,845,285	18,969,384	18,968,683	19,094,182
Claims on Public Corporations	0	0	0	0	0	0
Claims on Private Sector	362,532	363,837	353,185	356,980	357,078	359,815
Claims on Domestic Banks	607,717	647,325	867,250	585,994	625,617	642,989
Claims on NBFIs	0	0	0	0	0	0
Unclassified Assets	15,027,582	15,077,369	15,154,384	15,764,387	15,583,000	15,665,474
Total Assets	69,058,418	68,387,444	69,026,521	70,132,597	71,654,620	71,423,175
	Jan-11	Feb-11	Mar-11	Apr-11	May-11	Jun-11
Liabilities						
Reserve Money	14,363,567	14,684,978	15,338,149	15,697,202	16,866,437	17,668,127
Other Deposits	0	0	0	0	0	0
Restricted Reserves	18,781	18,781	18,781	18,781	18,781	18,781
Foreign Liabilities	20,253,764	20,321,309	20,404,416	20,986,103	20,735,580	20,800,472
Liabilities to General Government	7,214,669	6,208,661	6,035,886	5,731,876	6,709,456	5,390,367
Capital Accounts	17,694,579	17,550,510	17,412,480	17,792,423	17,466,900	17,677,027
Unclassified Liabilities	9,513,058	9,603,204	9,816,809	9,906,212	9,857,466	9,868,401
Total Liabilities	69,058,418	68,387,444	69,026,521	70,132,597	71,654,620	71,423,175
Vertical Check (Assets/Liabilities)	0	0	0	0	0	0

NBFIs: Non-Bank Financial Institutions

Source : Central Bank of Liberia, Monrovia, Liberia.

MONEY AND BANKING

CENTRAL BANK OF LIBERIA

1.3b: Sectoral Balance Sheet of Central Bank of Liberia - 2011- Continued
Thousands of Liberian Dollars

	Jul-11	Aug-11	Sep-11	Oct-11	Nov-11	Dec-11
Assets						
Foreign Assets	35,704,476	36,292,165	35,876,040	35,589,415	35,391,833	37,963,032
Claims on General Government	18,969,705	18,969,271	18,845,357	18,852,285	18,727,666	18,976,710
Claims on Public Corporations	0	0	0	0	0	0
Claims on Private Sector	357,683	361,357	360,206	346,400	214,033	421,552
Claims on Domestic Banks	646,978	701,859	689,713	653,013	675,362	930,600
Claims on NBFIs	0	0	0	0	0	0
Unclassified Assets	15,579,258	15,676,525	16,100,947	16,084,177	16,041,755	16,216,701
Total Assets	71,258,100	72,001,178	71,872,264	71,525,290	71,050,647	74,508,595
	Jul-11	Aug-11	Sep-11	Oct-11	Nov-11	Dec-11
Liabilities						
Reserve Money	17,702,527	17,461,963	19,004,123	18,572,058	19,513,076	22,370,194
Other Deposits	0	0	0	0	0	0
Restricted Reserves	18,781	18,781	18,781	18,781	18,781	18,781
Foreign Liabilities	20,681,580	20,807,811	20,664,063	20,664,283	20,545,670	20,832,726
Liabilities to General Government	4,526,263	5,371,718	4,134,950	4,278,534	3,299,061	3,100,881
Capital Accounts	17,546,639	17,489,523	17,260,920	17,170,808	17,102,049	16,732,551
Unclassified Liabilities	10,782,309	10,851,383	10,789,427	10,820,826	10,572,010	11,453,462
Total Liabilities	71,258,100	72,001,178	71,872,264	71,525,290	71,050,647	74,508,595
Vertical Check (Assets/Liabilities)	0	0	0	0	0	0

*Revised

NBFIs: Non-Bank Financial Institutions

Source : Central Bank of Liberia, Monrovia, Liberia.

MONEY AND BANKING

CENTRAL BANK OF LIBERIA

1.3c: Sectoral Balance Sheet of Central Bank of Liberia -2012

Thousands of Liberian Dollars

	May-12	Jun-12	Jul-12	Aug-12
Assets				
Foreign Assets	39,613,226	37,821,837	36,420,307	34,847,168
Claims on General Government	19,848,388	20,964,717	20,695,832	20,696,228
Claims on Public Corporations	0	0	0	0
Claims on Private Sector	361,194	354,938	96,271	102,553
Claims on Domestic Banks	820,777	955,528	649,849	714,114
Claims on NBFIs	0	0	0	0
Unclassified Assets	17,044,412	17,239,208	17,145,150	16,414,117
Total Assets	77,687,997	77,336,229	75,007,409	72,774,179
	May-12	Jun-12	Jul-12	Aug-12
Liabilities				
Reserve Money	21,530,525	20,942,566	20,409,330	20,291,131
Other Deposits	0	0	0	0
Restricted Reserves	18,781	18,781	18,781	18,781
Foreign Liabilities	21,821,960	21,391,007	21,103,883	19,960,970
Liabilities to General Government	4,116,452	5,679,670	4,818,629	4,462,094
Capital Accounts	17,729,389	16,961,766	16,478,874	16,390,288
Unclassified Liabilities	12,470,890	12,342,439	12,177,912	11,650,916
Total Liabilities	77,687,997	77,336,229	75,007,409	72,774,179
Vertical Check (Assets/Liabilities)	0	0	0	0

NBFIs: Non-Bank Financial Institutions

Source : Central Bank of Liberia, Monrovia, Liberia.

MONEY AND BANKING

CENTRAL BANK OF LIBERIA

1.4a: Commercial Banks' Loans By Economic Sector- 2010

Thousands of Liberian Dollars

Sector	Jan-10		Feb-10		Mar-10		Apr-10		May-10		Jun-10	
	L\$	%	L\$	%	L\$	%	L\$	%	L\$	%	L\$	%
1. Agriculture	54,527	7.8	61,299	8.3	368,963	3.6	313,667	3.1	293,622	2.9	346,084	3.3
1.1 Rubber	-	-	-	-	104,176	1.0	71,858	0.7	72,215	0.7	73,551	0.7
1.2 Forestry	13,824	2.0	13,824	1.9	46,776	0.5	68,835	0.7	66,234	0.6	63,870	0.6
1.3 Fishery	-	-	-	6.5	82,644	0.8	66,209	0.7	70,499	0.7	70,372	0.7
1.4 Others	40,703	5.8	47,475	-	135,368	1.3	106,766	1.0	84,674	0.8	138,292	1.3
2. Mining & Quarrying	65	0.0	67	0.0	570	0.0	26,026	0.3	25,456	0.2	18,572	0.2
2.1 Iron Ore	0.0	0.0	0.0	0.0	429.0	0.0	25,740.0	0.3	25,096.5	0.2	16,400.8	0.2
2.2 Quarrying	65	0.0	67	0.1	141	0.0	286	0.0	359	0.0	2,171	0.0
3. Manufacturing	4,705	0.7	785	0.0	144,626	1.4	175,687	1.7	171,908	1.7	381,308	3.7
4. Construction	4,068	0.6	4,728	0.6	1,056,813	10.3	988,629	9.7	1,590,828	15.6	929,904	9.0
4.1 Mortgage Loans	-	0.0	-	0.0	-	0.0	-	0.0	669,097	6.6	-	0.0
4.2 Home Improvement	-	0.0	-	0.0	39,754	0.4	39,325	0.4	46,976	0.5	46,746	0.5
4.3 Others	4,068	0.6	4,728	0.6	1,017,059	9.9	949,304	9.3	874,755	8.6	883,159	8.5
5. Trans., Storage & Comm.	4,957	0.7	5,376	0.7	1,656,603	16.2	1,608,718	15.8	1,616,504	15.8	1,760,489	17.0
5.1 Transportation	1,728	0.2	2,141	0.3	927,850	9.0	882,248	8.7	925,059	9.1	969,047	9.4
5.2 Storage	0.0	0.0	0.0	0.0	0.0	0.0	0.0	0.0	0.0	0.0	0.0	0.0
5.3 Communication	3,229	0.5	3,235	0.4	728,753	7.1	726,471	7.1	691,445	6.8	791,442	7.6
6. Trade, Hotel & Rest.	266,643	38.0	287,040	39.0	3,035,559	29.6	3,027,744	29.7	2,974,278	29.2	2,918,583	28.2
6.1 Diamond trade	0	0.0	0	0.0	10,582	0.1	10,582	0.1	11,726	0.1	12,788	0.1
6.2 Other trade	265,023	37.8	284,912	38.7	2,719,935	26.5	2,727,535	26.8	2,693,191	26.4	2,622,629	25.3
6.3 Hotels	50	0.0	52	0.0	259,385	2.5	248,590	2.4	221,209	2.2	238,631	2.3
6.4 Restaurants	1,570	0.2	2,076	0.3	45,658	0.4	41,037	0.4	48,153	0.5	44,536	0.4
7. Others	366,420	52.2	376,137	51.1	3,989,446	38.9	4,037,635	39.7	3,527,205	34.6	3,999,394	38.6
7.1 Services	323,402	46.1	295,156	40.1	1,723,155	16.8	1,872,670	18.4	1,336,219	13.1	1,255,594	12.1
7.2 Personal	42,222	6.0	80,238	10.9	1,816,770	17.7	1,733,079	17.0	1,700,096	16.7	2,238,356	21.6
7.3 GOL	45	0.0	31	0.0	67,243	0.7	67,244	0.7	67,246	0.7	67,952	0.7
7.4 Central Bank of Liberia	-	-	-	-	-	-	-	-	-	-	-	-
7.5 Public Corporations	5	0.0	5	0.0	90,024	0.9	64,212	0.6	76,582	0.8	73,122	0.7
7.6 Others	746	0.1	707	0.1	292,255	2.9	300,430	3.0	347,063	3.4	364,370	3.5
TOTAL	701,385	100.0	735,432	100.0	10,252,578	100.0	10,178,104	100.0	10,199,798.30	100	10,354,334.66	100

Source: Central Bank of Liberia, Monrovia, Liberia.

MONEY AND BANKING

CENTRAL BANK OF LIBERIA

1.4a: Commercial Banks' Loans By Economic Sector- 2010 (continued)

Thousands of Liberian Dollars

Sector	Jul-10		Aug-10		Sep-10		Oct-10		Nov-10		Dec-10	
	L\$	%	L\$	%	L\$	%	L\$	%	L\$	%	L\$	%
1. Agriculture	341,883	3.1	305,489	2.8	307,948	2.6	389,493	3.1	383,000	3.0	398,250	3.2
1.1 Rubber	72,718	0.7	94,614	0.9	157,704	1.3	104,368	0.8	140,833	1.1	105,244	0.8
1.2 Forestry	64,851	0.6	55,970	0.5	40,605	0.3	98,035	0.8	60,419	0.5	78,749	0.6
1.3 Fishery	73,370	0.7	68,223	0.6	68,440	0.6	136,827	1.1	129,268	1.0	145,360	1.2
1.4 Others	130,945	1.2	86,683	0.8	41,199	0.3	50,262	0.4	52,482	0.4	68,897	0.5
2. Mining & Quarrying	25,671	0.2	41,477	0.4	56,557	0.5	2,160	0.0	71,390	0.6	2,085	0.0
2.1 Iron Ore	23,562.5	0.2	26,752.5	0.2	54,375.0	0.5	0.0	0.0	67,135.0	0.5	0.0	0.0
2.2 Quarrying	2,108	0.0	14,725	0.1	2,182	0.0	2,160	0.0	4,255	0.0	2,085	0.0
3. Manufacturing	391,019	3.6	146,130	1.4	162,587	1.4	146,684	1.2	155,772	1.2	162,694	1.3
4. Construction	1,155,840	10.5	638,354	5.9	1,047,493	8.7	1,098,051	8.7	1,115,678	8.8	1,215,416	9.6
4.1 Mortgage Loans	-	0.0	4,858	0.0	101,500	0.8	107,625	0.9	108,750	0.9	117,975	0.9
4.2 Home Improvement	48,430	0.4	48,793	0.5	305,466	2.5	302,626	2.4	303,395	2.4	387,730	3.1
4.3 Others	1,107,410	10.1	584,704	5.4	640,527	5.3	687,799	5.5	703,533	5.6	709,711	5.6
5. Trans., Storage & Comm.	1,845,753	16.8	1,188,979	11.0	2,272,817	18.9	2,812,529	22.3	2,865,432	22.6	2,823,580	22.4
5.1 Transportation	979,797	8.9	609,647	5.7	1,646,833	13.7	2,076,113	16.5	2,117,720	16.7	2,079,639	16.5
5.2 Storage	21,460.0	0.2	29,362.5	0.3	0.0	0.0	0.0	0.0	0.0	0.0	0.0	0.0
5.3 Communication	844,496	7.7	549,970	5.1	625,984	5.2	736,416	5.8	747,712	5.9	743,941	5.9
6. Trade, Hotel & Rest.	3,039,430	27.7	3,527,271	32.7	4,243,437	35.3	3,891,141	30.9	3,988,145	31.5	3,977,725	31.5
6.1 Diamond trade	182,265	1.7	12,978	0.1	13,630	0.1	13,633	0.1	239,178	1.9	13,800	0.1
6.2 Other trade	2,572,169	23.4	3,313,106	30.8	3,962,148	32.9	3,603,644	28.6	3,475,871	27.5	3,653,619	28.9
6.3 Hotels	235,472	2.1	184,150	1.7	249,930	2.1	257,102	2.0	256,020	2.0	292,743	2.3
6.4 Restaurants	49,525	0.5	17,038	0.2	17,730	0.1	16,763	0.1	17,077	0.1	17,564	0.1
7. Others	4,184,604	38.1	4,926,222	45.7	3,936,875	32.7	4,256,751	33.8	4,083,055	32.2	4,043,743	32.0
7.1 Services	1,354,477	12.3	1,469,538	13.6	1,405,048	11.7	1,438,534	11.4	1,382,090	10.9	1,321,596	10.5
7.2 Personal	2,431,660	22.1	3,198,222	29.7	2,338,875	19.4	2,569,536	20.4	2,527,860	20.0	2,478,783	19.6
7.3 GOL	68,189	0.6	68,150	0.6	68,150	0.6	67,445	0.5	68,150	0.5	67,210	0.5
7.4 Central Bank of Liberia	0	0.0	0	0.0	0	0.0	0	0.0	0	0.0	0	0.0
7.5 Public Corporations	18,855	0.2	-	0.0	943	0.0	72	0.0	73	0.0	72	0.0
7.6 Others	311,423	2.8	190,313	1.8	123,860	1.0	181,164	1.4	104,883	0.8	176,083	1.4
TOTAL	10,984,198.20	100	10,773,920.88	100	12,027,713.00	100	12,596,808.22	100	12,662,470.50	100	12,623,491.04	100

Source : Central Bank of Liberia, Monrovia, Liberia.

MONEY AND BANKING

CENTRAL BANK OF LIBERIA

1.4b: Commercial Banks' Loans By Economic Sector - 2011*Thousands of Liberian Dollars*

Sector	Jan-11		Feb-11		Mar-11		Apr-11		May-11		Jun-11	
	L\$	%	L\$	%	L\$	%	L\$	%	L\$	%	L\$	%
1. Agriculture	463,032	3.5	515,489	3.8	547,500	4.0	464,411	3.3	488,592.0	3.4	517,277.0	3.6
1.1 Rubber	123,505	0.9	128,202	0.9	146,961	1.1	118,473	0.8	126,425.0	0.9	98,113.0	0.7
1.2 Forestry	102,476	0.8	116,021	0.9	151,503	1.1	131,393	0.9	127,195.0	0.9	164,424.0	1.1
1.3 Fishery	136,228	1.0	165,525	1.2	128,592	0.9	126,658	0.9	151,742.5	1.1	167,462.0	1.2
1.4 Others	100,824	0.8	105,741	0.8	120,444	0.9	87,889	0.6	83,229.5	0.6	87,278.0	0.6
2. Mining & Quarrying	2,766	0.0	12,944	0.1	53,003	0.4	55,395	0.4	56,265.0	0.4	49,061.0	0.3
2.1 Iron Ore	-	-	-	-	-	-	-	-	-	-	1,173.0	0.0
2.2 Quarrying	2,766	0.0	12,944	0.1	53,003	0.4	55,395	0.4	56,265.0	0.4	47,888.0	0.3
3. Manufacturing	762,040	5.8	186,317	1.4	202,008	1.5	351,600	2.5	352,759.5	2.5	305,190.0	2.1
4. Construction	1,391,797	10.6	1,423,017	10.5	1,540,369	11.2	1,471,530	10.5	1,518,132.0	10.7	1,585,257.0	11.1
4.1 Mortgage Loans	178,278	1.4	202,300	1.5	213,624	1.6	215,108	1.5	214,310.0	1.5	141,985.0	1.0
4.2 Home Improvement	429,328	3.3	421,288	3.1	424,128	3.1	499,503	3.6	497,110.0	3.5	349,723.0	2.4
4.3 Others	784,192	5.9	799,429	5.9	902,617	6.6	756,920	5.4	806,712.0	5.7	1,093,549.0	7.6
5. Trans., Storage & Comm.	3,009,794	22.8	1,960,634	14.5	1,957,403	14.2	1,435,831	10.2	1,396,654.0	9.8	1,457,491.0	10.2
5.1 Transportation	2,157,175	16.4	1,088,765	8.0	1,091,462	7.9	712,772	5.1	715,282.5	5.0	703,656.0	4.9
5.2 Storage	0.0	0.0	0.0	0.0	0.0	0.0	0.0	0.0	-	-	-	-
5.3 Communication	852,619	6.5	871,869	6.4	865,941	6.3	723,059	5.2	681,371.5	4.8	753,835.0	5.3
6. Trade, Hotel & Rest.	4,079,018	30.9	5,196,721	38.3	5,198,610	37.8	5,733,106	40.9	5,880,258.0	41.3	5,679,708.0	39.6
6.1 Diamond trade	14,718	0.1	14,739	0.1	24,552	0.2	19,793	0.1	19,502.5	0.1	20,732.0	0.1
6.2 Other trade	3,747,631	28.4	4,863,513	35.9	4,838,041	35.2	5,301,089	37.8	5,461,219.0	38.4	5,263,696.0	36.7
6.3 Hotels	298,650	2.3	299,498	2.2	315,958	2.3	391,595	2.8	378,617.0	2.7	374,950.0	2.6
6.4 Restaurants	18,020	0.1	18,971	0.1	20,059	0.1	20,630	0.1	20,919.5	0.1	20,330.0	0.1
7. Others	3,479,460	26.4	4,269,326	31.5	4,258,280	31.0	4,513,330	32.2	4,542,854.7	31.9	4,741,943.6	33.1
7.1 Services	1,252,654	9.5	1,020,960	7.5	1,483,391	10.8	1,053,793	7.5	1,038,859.0	7.3	1,066,688.0	7.4
7.2 Personal	1,939,409	14.7	3,012,698	22.2	2,586,914	18.8	3,036,923	21.7	3,087,295.0	21.7	3,254,737.0	22.7
7.3 GOL	92,016	0.7	67,924	0.5	67,693	0.5	68,161	0.5	68,150.0	0.5	68,912.0	0.5
7.4 Central Bank of Liberia	0	0.0	-	0.0	0	0.0	-	0.0	-	-	-	-
7.5 Public Corporations	-	0.0	-	0.0	-	0.0	171,028	1.2	170,955.0	1.2	179,288.0	1.3
7.6 Others	195,381	1.5	167,744	1.2	120,282	0.9	183,426	1.3	177,595.7	1.2	172,318.6	1.2
TOTAL	13,187,905.05	100	13,564,446.09	100	13,757,173.28	100	14,025,201.40	100	14,235,515	100	14,335,928	100.0

Source: Central Bank of Liberia, Monrovia, Liberia.

MONEY AND BANKING

CENTRAL BANK OF LIBERIA

1.4b: Commercial Banks' Loans By Economic Sector - 2011- Continued

Thousands of Liberian Dollars

Sector	Jul-11		Aug-11		Sep-11		Oct-11		Nov-11		Dec-11	
	L\$	%	L\$	%	L\$	%	L\$	%	L\$	%	L\$	%
1. Agriculture	527,459.0	3.7	523,661.5	3.6	514,759	3.4	497,098	3.3	488,026	3.2	748,330	4.6
1.1 Rubber	96,905.0	0.7	135,535.0	0.9	97,401	0.7	99,273	0.7	95,023	0.6	132,458	0.8
1.2 Forestry	202,305.0	1.4	134,735.0	0.9	141,152	0.9	166,747	1.1	128,168	0.8	125,826	0.8
1.3 Fishery	152,250.0	1.1	126,802.5	0.9	200,736	1.3	66,456	0.4	112,756	0.7	192,425	1.2
1.4 Others	75,999.0	0.5	126,589.0	0.9	75,470	0.5	164,622	1.1	152,080	1.0	297,622	1.8
2. Mining & Quarrying	54,960.0	0.4	36,037.5	0.2	66,965	0.4	127,445	0.8	144,006	0.9	139,568	0.9
2.1 Iron Ore	5.00	0.00	-	-	-	-	-	-	8,795	0.1	8,990.00	0.10
2.2 Quarrying	54,955.0	0.4	36,037.5	0.2	66,965	0.4	127,445	0.8	135,212	0.9	130,578	0.8
3. Manufacturing	303,389.5	2.1	310,010.0	2.1	259,416	1.7	271,008	1.8	339,911	2.2	324,053	2.0
4. Construction	1,585,843.0	11.2	1,304,518.0	8.8	1,312,594	8.8	1,361,221	8.9	1,365,694	8.9	1,319,039	8.2
4.1 Mortgage Loans	142,100.0	1.0	103,240.0	0.7	96,408	0.6	92,304	0.6	92,521	0.6	98,238	0.6
4.2 Home Improvement	345,440.0	2.4	124,822.5	0.8	99,576	0.7	90,811	0.6	82,144	0.5	81,466	0.5
4.3 Others	1,098,303.0	7.8	1,076,455.5	7.3	1,116,610	7.5	1,178,106	7.7	1,191,029	7.8	1,139,335	7.0
5. Trans., Storage & Comm.	1,769,227.5	12.5	1,359,086.5	9.2	1,322,107	8.8	1,304,508	8.6	1,326,120	8.6	1,351,589	8.4
5.1 Transportation	1,022,968.5	7.2	666,562.5	4.5	654,054	4.4	629,183	4.1	652,034	4.2	676,770	4.2
5.2 Storage	-	-	-	-	-	-	-	-	-	-	-	0.0
5.3 Communication	746,259.0	5.3	692,524.0	4.7	668,053	4.5	675,325	4.4	674,086	4.4	674,819	4.2
6. Trade, Hotel & Rest.	5,104,382.0	36.1	5,651,218.5	38.3	5,918,395	39.6	6,231,715	40.9	6,304,642	41.1	6,662,164	41.2
6.1 Diamond trade	20,952.5	0.1	21,170.0	0.1	22,176	0.1	21,240	0.1	20,664	0.1	3,536,392	21.9
6.2 Other trade	4,687,663.0	33.1	5,281,419.0	35.8	5,559,882	37.2	5,899,914	38.7	5,983,390	39.0	2,802,802	17.3
6.3 Hotels	374,702.0	2.6	327,120.0	2.2	314,928	2.1	289,368	1.9	279,967	1.8	289,238	1.8
6.4 Restaurants	21,064.5	0.1	21,509.5	0.1	21,409	0.1	21,193	0.1	20,623	0.1	33,732	0.2
7. Others	4,808,624.6	34.0	5,560,386.0	37.7	5,554,867	37.2	5,454,419.52	35.8	5,386,001	35.1	5,625,575	34.8
7.1 Services	2,269,755.0	16.0	2,520,389.1	17.1	2,507,723	16.8	2,587,916	17.0	2,510,567	16.4	2,609,549	16
7.2 Personal	2,112,392.5	14.9	2,225,892.5	15.1	2,326,209	15.6	2,277,777	14.9	2,312,271	15.1	2,414,699	14.9
7.3 GOL	68,440.0	0.5	58,580.0	0.4	57,528	0.4	57,528	0.4	57,129	0.4	57,928	0.4
7.4 Central Bank of Liberia	0	0	0	0	0	0	0	0.0	0	0	0	0.0
7.5 Public Corporations	178,060.0	1.3	347,884.0	2.4	346,634	2.3	337,098	2.2	297,083	1.9	322,988	2.0
7.6 Others	179,977.0	1.3	407,640.4	2.8	316,773	2.1	194,101	1.3	208,953	1.4	220,412	1.4
TOTAL	14,153,886	100	14,744,918	100.0	14,949,103	100	15,247,415	100	15,354,399	100	16,170,317	100.0

Source : Central Bank of Liberia, Monrovia, Liberia.

MONEY AND BANKING

CENTRAL BANK OF LIBERIA

1.4c: Commercial Banks' Loans By Economic Sector - 2012

Thousands of Liberian Dollars

Sector	Jan-12		Feb-12		Mar-12		Apr-12		May-12		Jun-12		Jul-12		Aug-12	
	L\$	%	L\$	%	L\$	%	L\$	%	L\$	%	L\$	%	L\$	%	L\$	%
1. Agriculture	703,084	4.4	744,728	4.4	643,111	3.7	766,591	4.4	669,480	3.8	654,066	3.7	516,583	2.9	582,405	3.3
1.1 Rubber	134,712	0.8	195,706	1.2	132,439	0.8	139,756	0.8	169,958	1.0	125,122	0.7	144,265	0.8	95,232	0.5
1.2 Forestry	130,206	0.8	170,546	1.0	157,637	0.9	149,184	0.9	146,668	0.8	143,264	0.8	87,653	0.5	140,238	0.8
1.3 Fishery	155,600	1.0	114,503	0.7	153,990	0.9	154,586	0.9	140,650	0.8	167,700	0.9	61,263	0.3	136,343	0.8
1.4 Others	282,567	1.8	263,973	1.6	199,045	1.1	323,065	1.9	212,205	1.2	217,981	1.2	223,403	1.3	210,592	1.2
2. Mining & Quarrying	143,036	0.9	152,575	0.9	231,625	1.3	124,399	0.7	99,330	0.6	118,833	0.7	108,393	0.6	114,298	0.7
2.1 Iron Ore	9,188	0.1	9,271.00	0.06	86,358	0.5	3,922.00	0.0	3,698	0.0	3,800	0.0	145	0.0	3,896	0.0
2.2 Quarrying	133,849	0.8	143,304	0.9	145,267	0.8	120,477	0.7	95,633	0.5	115,033	0.6	108,248	0.6	110,402	0.6
3. Manufacturing	334,137	2.1	344,215	2.0	346,370	2.0	342,302	2.0	437,667	2.5	418,079	2.3	392,370	2.2	325,393	1.9
4. Construction	1,309,317	8.2	1,354,973	8.1	1,319,674	7.6	1,204,641	6.9	1,194,116	6.8	1,484,294	8.3	1,212,817	6.9	1,479,242	8.5
4.1 Mortgage Loans	90,332	0.6	135,780	0.8	129,574	0.7	129,056	0.7	32,698	0.2	218,434	1.2	162,183	0.9	192,203	1.1
4.2 Home Improvement	67,410	0.4	61,489	0.4	60,499	0.3	35,816	0.2	115,420	0.7	15,943	0.1	6,960	0.0	11,319	0.1
4.3 Others	1,151,576	7.2	1,157,704	6.9	1,129,601	6.5	1,039,769	6.0	1,045,998	6.0	1,249,917	7.0	1,043,675	6.0	1,275,720	7.3
5. Trans., Storage & Comm.	1,189,061	7.5	1,666,421	9.9	1,747,678	10.0	1,402,254	8.0	1,431,843	8.2	1,347,240	7.5	1,321,736	7.5	1,426,725	8.2
5.1 Transportation	515,689	3.2	1,141,727	6.8	1,094,819	6.3	786,890	4.5	789,071	4.5	784,198	4.4	694,479	4.0	804,642	4.6
5.2 Storage	-	-	-	0.0	-	-	37.00	0.0	-	-	-	-	0	0.0	-	-
5.3 Communication	673,372	4.2	524,694	3.1	652,859	3.7	615,327	3.5	624,772	3.7	563,042	3.2	627,257	3.6	622,083	3.6
6. Trade, Hotel & Rest.	6,859,903	43.0	7,236,069	43.0	7,452,817	42.7	7,626,558	43.7	7,232,405	41.4	7,691,398	43.1	5,476,084	31.3	6,860,175	39.4
6.1 Diamond trade	21,683	0.1	22,630	0.1	24,198	0.1	24,938	0.1	25,665	0.1	24,734	0.1	23,418	0.1	24,255	0.1
6.2 Other trade	6,609,033	41.4	6,926,278	41.2	6,728,004	38.5	7,297,544	41.8	6,921,351	39.6	7,379,021	41.3	5,308,000	30.3	6,608,301	37.9
6.3 Hotels	205,739	1.3	252,056	1.5	663,116	3.8	267,505	1.5	250,198	1.4	252,916	1.4	121,365	0.7	211,357	1.2
6.4 Restaurants	23,449	0.1	35,105	0.2	37,499	0.2	36,571	0.2	35,191	0.2	34,728	0.2	23,301	0.1	16,263	0.1
7. Others	5,407,123	33.9	5,315,753	31.6	5,726,158	32.8	5,974,479	34.3	6,399,997	36.6	6,143,449	34.4	8,494,833	48.5	6,629,852	38.1
7.1 Services	2,454,404	15.4	2,188,195	13	2,250,095	12.9	2,612,394	15	2,206,939	12.6	1,793,111	10.0	2,709,597	15.5	1,833,875	10.5
7.2 Personal	2,326,243	14.6	2,473,726	14.7	2,612,638	15.0	2,550,893	14.6	2,477,909	14.2	2,614,985	14.6	2,862,531	16.3	2,891,751	16.6
7.3 GOL	55,206	0.3	55,197	0.3	55,881	0.3	56,179	0.3	54,753	0.3	64,832	0.4	54,921	0.3	60,291	0.3
7.4 Central Bank of Liberia	0	0	0	0.0	0	0	0	0.0	-	-	-	-	0	0.0	-	-
7.5 Public Corporations	370,955	2.3	373,122	2.2	414,765	2.4	413,828	2.4	262,740	1.5	298,178	1.7	359,738	2.1	290,138	1.7
7.6 Others	200,317	1.3	225,513	1.3	392,779	2.2	341,185	2.0	1,397,656	8.0	1,372,344	7.7	2,508,047	14.3	1,553,797	8.9
TOTAL	15,945,661	100	16,814,734	100	17,467,432	100	17,441,223	100	17,464,838	100	17,857,358	100	17,522,814	100.0	17,418,089	100.0

Source: Central Bank of Liberia, Monrovia, Liberia.

MONEY AND BANKING

CENTRAL BANK OF LIBERIA

1.5: Commercial Banks' Interest Rates: 2010-2012

	Jan-10	Feb-10	March-10	April-10	May-10	Jun-10
Average Lending Rate	14.10	14.16	14.17	14.23	14.58	14.17
Average Personal Loan Rate	14.46	14.54	14.46	14.53	14.48	14.45
Average Mortgage Rate	14.50	14.00	14.47	14.50	14.31	14.28
Average Time Deposit Rate	4.30	4.20	3.90	4.00	4.00	4.20
Average Savings Rate	2.00	2.00	2.00	2.00	2.01	2.19
Average Rate on CDs	3.00	3.00	3.00	3.00	3.00	3.00

	Jul-10	Aug-10	Sep-10	Oct-10	Nov-10	Dec-10
Average Lending Rate	14.34	14.15	14.40	14.27	14.17	14.17
Average Personal Loan Rate	14.38	13.65	14.42	14.51	14.12	14.15
Average Mortgage Rate	14.32	14.00	14.28	14.27	14.23	14.19
Average Time Deposit Rate	4.10	3.00	2.90	2.50	2.50	2.90
Average Savings Rate	2.21	2.44	2.00	2.00	2.00	2.01
Average Rate on CDs	3.00	3.00	3.00	3.00	3.00	3.00

	Jan-11	Feb-11	Mar-11	Apr-11	May-11	Jun-11
Average Lending Rate	14.62	13.52	13.39	13.50	13.53	13.64
Average Personal Loan Rate	15.38	15.38	15.17	14.60	10.10	14.68
Average Mortgage Rate	14.00	12.47	12.47	14.66	14.63	15.00
Average Time Deposit Rate	2.90	3.30	2.60	2.50	2.90	2.90
Average Savings Rate	2.01	2.02	2.02	2.01	2.08	2.01
Average Rate on CDs	3.00	3.00	3.00	2.00	3.00	2.50

	Jul-11	Aug-11	Sep-11	Oct-11	Nov-11	Dec-11
Average Lending Rate	13.47	13.80	13.80	14.01	13.88	13.85
Average Personal Loan Rate	10.99	14.52	14.44	10.74	10.83	11.02
Average Mortgage Rate	14.73	14.71	15.00	14.86	14.17	14.03
Average Time Deposit Rate	3.10	3.20	2.70	3.30	3.30	3.70
Average Savings Rate	2.01	2.01	2.01	2.10	2.00	2.02
Average Rate on CDs	2.50	3.00	3.00	3.00	3.00	3.00

	Jan-12	Feb-12	Mar-12	Apr-12	May-12	Jun-12
Average Lending Rate	13.42	13.38	13.26	13.89	12.88	13.42
Average Personal Loan Rate	11.02	14.02	13.90	14.70	14.01	14.02
Average Mortgage Rate	14.66	14.14	15.00	13.41	14.40	13.86
Average Time Deposit Rate	3.40	3.30	3.80	4.10	3.70	3.80
Average Savings Rate	2.00	2.02	2.02	2.00	2.02	2.02
Average Rate on CDs	2.50	3.00	2.00	2.50	2.50	3.00

	Jul-12	Aug-12
Average Lending Rate	13.74	13.89
Average Personal Loan Rate	13.94	13.96
Average Mortgage Rate	13.73	13.79
Average Time Deposit Rate	3.40	3.80
Average Savings Rate	2.02	2.02
Average Rate on CDs	3.00	3.00

Note: CDs-Certificate of Deposits

Source : Central Bank of Liberia, Monrovia, Liberia.

MONEY AND BANKING

CENTRAL BANK OF LIBERIA

1.6a: Liberian Dollar Exchange Rates - Period Averages: 2010-2012
(Liberian dollar per US dollar)

Period	Large bills ¹		
	Buy	Sell	Middle ²
2010			
Jan	70.83	71.83	71.33
Feb	71.25	72.31	71.78
Mar	71.09	72.09	71.59
Apr	70.21	71.21	70.71
May	70.58	71.58	71.08
Jun	71.19	72.15	71.67
Jul	71.81	72.76	72.29
Aug	72.00	73.00	72.50
Sep	71.35	72.35	71.85
Oct	71.50	72.54	72.02
Nov	69.35	70.31	69.83
Dec	69.72	70.67	70.19
Quarter 1	71.06	72.08	71.57
Quarter 2	70.66	71.65	71.15
Quarter 3	71.72	72.70	72.21
Quarter 4	70.19	71.17	70.68
2011			
Jan	71.79	72.75	72.27
Feb	71.96	72.60	72.28
March	71.61	72.31	71.96
April	71.54	72.21	71.88
May	72.00	72.98	72.49
June	72.10	73.10	72.60
July	72.35	73.33	72.84
Aug	72.02	73.00	72.51
Sep	71.58	72.58	72.08
Oct	71.88	72.69	72.29
Nov	71.10	72.10	71.60
Dec	71.43	72.43	71.93
Quarter 1	71.79	72.55	72.17
Quarter 2	71.88	72.76	72.32
Quarter 3	71.98	72.97	72.48
Quarter 4	71.47	72.41	71.94
2012			
Jan	72.44	73.40	72.92
Feb	73.00	74.00	73.50
Mar	73.11	74.11	73.61
Apr	73.5	74.5	74.00
May	74.41	75.37	74.89
Jun	75.04	76.04	75.54
Jul	73.62	74.58	74.10
Aug	72.99	73.99	73.49
Quarter 1	72.85	73.84	73.34
Quarter 2	74.32	75.30	74.81
Quarter 3	73.31	74.29	73.80

² Average of buying and selling rates.

Source : Central Bank of Liberia, Monrovia, Liberia.

MONEY AND BANKING

CENTRAL BANK OF LIBERIA

1.7: Liberian Dollar Exchange Rates - End of Period: 2010 - 2012

(Liberian dollars per US dollar)

Months	2010	2011	2012
Jan	72.00	72.50	73.50
Feb	72.50	72.25	73.50
Mar	71.50	72.00	74.00
Apr	71.50	72.50	74.00
May	71.50	72.50	76.00
Jun	72.25	73.00	74.50
Jul	72.50	72.50	73.50
Aug	72.50	72.50	73.50
Sep	72.50	72.00	
Oct	71.75	72.00	
Nov	69.50	71.50	
Dec	71.75	72.50	

Source : Central Bank of Liberia, Monrovia, Liberia.

MONEY AND BANKING

CENTRAL BANK OF LIBERIA

L8: Liberian Dollar Exchange Rates Jul-Aug, 2012
(Liberian dollar per US dollar)

Period	Large bills ¹			Period	Large bills ¹		
	Buy	Sell	Middle ²		Buy	Sell	Middle ²
Jul				Aug			
2	74.00	75.00	74.50	1	73.00	74.00	73.50
3	74.00	75.00	74.50	2	73.00	74.00	73.50
4	74.00	75.00	74.50	3	73.00	74.00	73.50
5	74.00	75.00	74.50	4	73.00	74.00	73.50
6	74.00	75.00	74.50	6	73.00	74.00	73.50
7	74.00	75.00	74.50	7	73.00	74.00	73.50
9	74.00	75.00	74.50	8	73.00	74.00	73.50
10	74.00	75.00	74.50	9	73.00	74.00	73.50
11	74.00	75.00	74.50	10	73.00	74.00	73.50
12	74.00	75.00	74.50	11	72.95	73.95	73.45
13	74.00	75.00	74.50	13	72.95	73.95	73.45
14	74.00	75.00	74.50	14	72.95	73.95	73.45
16	74.50	74.50	74.50	15	72.95	73.95	73.45
17	73.50	74.50	74.00	16	72.95	73.95	73.45
18	73.50	74.50	74.00	17	72.95	73.95	73.45
19	73.50	74.50	74.00	18	73.00	74.00	73.50
20	73.50	74.50	74.00	20	73.00	74.00	73.50
21	73.50	74.50	74.00	21	73.00	74.00	73.50
23	73.00	74.00	73.50	22	73.00	74.00	73.50
24	73.00	74.00	73.50	23	73.00	74.00	73.50
25	73.00	74.00	73.50	24	73.00	74.00	73.50
26	73.00	74.00	73.50	25	73.00	74.00	73.50
27	73.00	74.00	73.50	27	73.00	74.00	73.50
28	73.00	74.00	73.50	28	73.00	74.00	73.50
30	73.00	74.00	73.50	29	73.00	74.00	73.50
31	73.00	74.00	73.50	30	73.00	74.00	73.50
				31	73.00	74.00	73.50
Average	73.62	74.58	74.10		72.99	73.99	73.49

1. US dollar bank notes of denominations 5 and higher.

2. Average of buying and selling rates.

Source: Central Bank of Liberia, Monrovia, Liberia.

MONEY AND BANKING

CENTRAL BANK OF LIBERIA

1.9: Commercial Banks' Inflows and Outflows: 2010 - Feb, 2012

(Thousands of United States Dollars)

Commercial Banks' Inflows and Outflows - 2010

	Jan-10	Feb-10	March-10	April-10	May-10	June-10	Jan-Jun Total
Inflows	76,415	72,640	85,774	81,936	76,878	69,171	462,814
Outflows	52,355	97,548	78,758	76,380	85,615	86,615	477,271

	Jul-10	Aug-10	Sep-10	Oct-10	Nov-10	Dec-10	Jul-Dec Total	Grand Total
Inflows	72,052	86,136	78,694	85,750	80,414	122,317	525,363	988,177
Outflows	92,791	88,455	90,075	75,237	71,786	98,292	516,636	993,907

Commercial Banks' Inflows and Outflows - 2011

	Jan-11	Feb-11	Mar-11	Apr-11	May-11	Jun-11	Jan-Jun Total
Inflows	75,593	104,288	94,972	80,030	137,596	125,148	617,627
Outflows	103,536	110,764	112,269	95,329	134,447	140,751	697,096

	Jul-11	Aug-11	Sep-11	Oct-11	Nov-11	Dec-11	Jul-Dec Total	Grand Total
Inflows	73,234	104,986	107,089	146,420	88,806	117,145	637,680	1,255,307
Outflows	101,401	123,631	117,280	110,379	89,970	139,590	682,251	1,379,347

Commercial Banks' Inflows and Outflows - 2012

	Jan-12	Feb-12	Mar-12	Apr-12	May-12	Jun-12	Jan-Jun Total
Inflows	137,778	123,231	105,676	89,987	134,652	113,164	704,488
Outflows	89,128	95,314	96,358	107,563	141,634	132,405	662,402

	Jul-12	Aug-12
Inflows	132,726	103,591
Outflows	114,893	105,374

Source : Central Bank of Liberia, Monrovia, Liberia.

MONEY AND BANKING

L10a: Central Bank of Liberia Fx Auction -2010

Auction No.	Date	FX Offered for sale by CBL (US\$)	Auction Rate L\$/US	Total Purchased US\$	No. of Accepted Bids	No. of Rejected Bids	Value of Rejected Bids (US\$)	Over/(Under) Subscription (US\$)	Total Value of Bids Submitted by Participating Banks/FX Bureaux (US\$)
Special Window	4-Jan-10	600,000.00	68	600,000.00	-	-	-	-	600,000.00
189	6-Jan-10	1,700,000.00	69.0000	1,700,000.00	25	1	29,000	(29,000)	1,729,000.00
190	13-Jan-10	1,500,000.00	70.00	1,500,000.00	26	1	209,456.04	(209,456.04)	1,709,456.04
191	20-Jan-10	750,000.00	70.50	750,000.00	18	2	353,000.00	(353,000.00)	1,103,000.00
192	27-Jan-10	500,000.00	71.50	500,000.00	13	11	658,438.94	(658,438.94)	1,158,438.94
193	3-Feb-10	750,000.00	71.60	750,000.00	17	5	442,169.68	(442,169.68)	1,192,169.68
194	10-Feb-10	750,000.00	71.7020	750,000.00	15	2	231,755.88	(231,755.88)	981,755.88
195	17-Feb-10	1,500,000.00	71.00	1,149,995.97	17	-	-	350,004.03	1,149,995.97
196	24-Feb-10	1,500,000.00	71.00	1,037,500.00	12	-	175,000.00	287,500.00	1,212,500.00
197	3-Mar-10	2,000,000.00	71.00	2,000,000.00	22	4	505,596.92	(505,596.92)	2,505,596.92
198	11-Mar-10	2,500,000.00	70.75	1,455,000.00	15	1	50,000.00	995,000.00	1,505,000.00
199	17-Mar-10	2,500,000.00	70.60	1,475,000.00	15	-	-	1,025,000.00	1,475,000.00
Special Window	19-Mar-10	1,000,000.00	71.00	1,000,000.00	-	-	-	-	1,000,000.00
200	24-Mar-10	1,500,000.00	70.50	1,267,000.00	18	-	-	233,000.00	1,267,000.00
Special Window	26-Mar-10	233,000.00	71.00	233,000.00	0	-	-	-	233,000.00
201	31-Mar-10	1,500,000.00	70.50	1,481,338.02	14	-	-	18,661.98	1,481,338.02
Special Window	2-Apr-10	500,000.00	71.00	500,000.00	-	-	-	-	500,000.00
Special Window	5-Apr-10	374,771.73	70.00	374,771.73	-	-	-	-	374,771.73
202	7-Apr-10	1,500,000.00	70.00	1,125,228.27	16	-	-	374,771.73	1,125,228.27
203	14-Apr-10	1,430,000.00	70.00	1,430,000.00	16	-	-	-	1,430,000.00
204	21-Apr-10	1,500,000.00	70.00	1,500,000.00	13	-	-	70,000.00	1,500,000.00
205	28-Apr-10	1,000,000.00	69.9900	552,415.03	12	-	-	447,585.00	552,415.00
Special Window	29-Apr-10	447,584.97	70.0000	447,584.97	-	-	-	-	447,584.97
206	5-May-10	500,000.00	70.2000	500,000.00	11	3	305,000.00	(305,000.00)	805,000.00
207	12-May-10	500,000.00	70.4000	500,000.00	19	4	444,000.00	(444,000.00)	944,000.00
208	26-May-10	500,000.00	70.9000	500,000.00	19	4	360,850.00	(360,850.00)	860,850.00
209	2-Jun-10	500,000.00	71.6000	500,000.00	10	13	522,000.00	(522,000.00)	1,022,000.00
210	9-Jun-10	500,000.00	71.8880	500,000.00	9	11	671,500.00	(671,500.00)	1,171,500.00
211	16-Jun-10	500,000.00	71.9999	500,000.00	9	9	520,500.00	(520,500.00)	1,020,500.00
212	23-Jun-10	500,000.00	72.2711	500,000.00	13	11	608,902.74	(608,902.74)	1,108,902.74
213	30-Jun-10	1,000,000.00	72.4000	1,000,000.00	26	8	719,240.00	(719,240.00)	1,719,240.00
Total		32,035,356.70		28,078,833.99	400	90	6,806,410.20	(2,779,887.46)	34,885,244.16

Source : Central Bank of Liberia, Monrovia, Liberia.

MONEY AND BANKING

1.10a: Central Bank of Liberia Fx Auction -2010 (continued)

Auction No.	Date	FX Offered for sale by CBL (US\$)	Auction Rate L\$/US	Total Purchased US\$	No. of Accepted Bids	No. of Rejected Bids	Value of Rejected Bids (US\$)	Over/(Under) Subscription (US\$)	Total Value of Bids Submitted by Participating Banks/FX Bureaux (US\$)
214	7-Jul-10	1,000,000.00	72.1999	1,000,000.00	17	3	392,885.00	(392,885.00)	1,392,885.00
215	14-Jul-10	500,000.00	72.4000	500,000.00	12	9	459,127.20	(459,127.00)	959,127.00
216	21-Jul-10	500,000.00	72.5999	500,000.00	10	7	350,000.00	(350,000.00)	850,000.00
217	28-Jul-10	500,000.00	72.7000	500,000.00	12	11	467,000.00	(467,000.00)	967,000.00
218	4-Aug-10	500,000.00	72.8999	500,000.00	10	8	320,000.00	(320,000.00)	820,000.00
219	11-Aug-10	750,000.00	72.6000	750,000.00	12	5	250,000.00	(110,980.00)	860,980.00
220	18-Aug-10	750,000.00	71.9999	300,000.00	6	15	728,250.00	(278,250.00)	1,028,250.00
221	25-Aug-10	750,000.00	71.7500	750,000.00	18	3	253,350.00	(253,350.00)	1,003,350.00
222	1-Sep-10	600,000.00	71.0000	600,000.00	9	10	434,000.00	(434,000.00)	1,034,000.00
223	8-Sep-10	500,000.00	71.2800	500,000.00	9	12	557,500.00	(557,500.00)	1,057,500.00
224	15-Sep-10	500,000.00	71.5000	500,000.00	13	3	210,000.00	(210,000.00)	710,000.00
225	22-Sep-10	500,000.00	71.8111	500,000.00	11	11	444,000.00	(444,000.00)	944,000.00
226	29-Sep-10	500,000.00	72.0000	500,000.00	15	5	350,000.00	(350,000.00)	850,000.00
227	6-Oct-10	750,000.00	71.0000	750,000.00	17	-	10,990.00	(10,990.00)	760,990.00
228	13-Oct-10	750,000.00	71.3310	750,000.00	12	6	268,500.00	(268,500.00)	1,018,500.00
229	20-Oct-10	750,000.00	71.6999	750,000.00	11	8	388,680.00	(388,680.00)	1,138,680.00
230	27-Oct-10	500,000.00	71.8500	500,000.00	11	11	607,105.00	(607,105.00)	1,107,105.00
231	3-Nov-10	500,000.00	71.8000	500,000.00	10	7	260,485.00	(260,485.00)	760,485.00
232	10-Nov-10	500,000.00	69.5000	500,000.00	13	1	50,000.00	(106,930.00)	606,930.00
233	17-Nov-10	500,000.00	71.8000	500,000.00	10	7	260,485.00	(260,485.00)	760,485.00
234	24-Nov-10	500,000.00	68.5000	500,000.00	13	1	50,000.00	(116,000.00)	616,000.00
235	1-Dec-10	500,000.00	69.0000	500,000.00	11	8	404,045.00	(404,045.00)	904,045.00
236	8-Dec-10	500,000.00	69.0000	500,000.00	11	3	195,000.00	(195,000.00)	695,000.00
237	15-Dec-10	500,000.00	69.8000	500,000.00	13	4	229,970.00	(229,970.00)	729,970.00
238	22-Dec-10	1,000,000.00	70.5000	1,000,000.00	15	-	760,000.00	240,000.00	760,000.00
239	29-Dec-10	1,000,000.00	70.9500	1,000,000.00	14	1	50,000.00	(465,000.00)	1,465,000.00
Total		16,100,000.00		15,650,000.00	315.00	159.00	8,751,372.20	(7,700,282.00)	23,800,282.00

Source : Central Bank of Liberia, Monrovia, Liberia.

MONEY AND BANKING

L10b: Central Bank of Liberia Fx Auction - 2011

Auction		FX Offered	Auction	Total	No. of	No. of	Value of	Over/(Under)	Total Value of Bids
No.	Date	for sale by	Rate	Purchased	Accepted	Rejected	Rejected	Subscription	Submitted by
		CBL (US\$)	L\$/US	US\$	Bids	Bids	Bids (US\$)	(US\$)	Participating
									Banks/FX Bureaux (US\$)
240	5-Jan-11	1,000,000.00	71.4990	1,000,000.00	15	2	100,000.00	(535,000.00)	1,535,000.00
241	12-Jan-11	750,000.00	72.0000	750,000.00	15	1	110,000.00	(110,000.00)	860,000.00
242	19-Jan-11	1,000,000.00	72.3500	1,000,000.00	13	1	240,000.00	(240,000.00)	1,240,000.00
243	26-Jan-11	1,000,000.00	72.4000	1,000,000.00	17	1	540,000.00	(540,000.00)	1,540,000.00
244	2-Feb-11	750,000.00	72.7000	750,000.00	11	7	590,730.00	(590,730.00)	1,340,730.00
245	9-Feb-11	750,000.00	72.1000	750,000.00	13	-	180,700.00	180,700.00	930,700.00
246	16-Feb-11	750,000.00	71.9000	750,000.00	12	1	50,000.00	260,000.00	1,010,000.00
247	23-Feb-11	500,000.00	72.2000	500,000.00	11	2	100,000.00	(207,000.00)	707,000.00
248	2-Mar-11	500,000.00	71.7500	500,000.00	13	0	-	191,500.00	691,500.00
249	9-Mar-11	400,000.00	71.8599	400,000.00	10	4	260,000.00	260,000.00	660,000.00
250	16-Mar-11	400,000.00	71.9000	400,000.00	10	0	45,000.00	45,000.00	445,000.00
251	23-Mar-11	400,000.00	72.3000	400,000.00	15	6	272,700.00	272,700.00	672,700.00
252	30-Mar-11	400,000.00	72.4500	400,000.00	8	8	315,000.00	315,000.00	715,000.00
253	6-Apr-11	400,000.00	71.9000	400,000.00	9	6	290,000.00	290,000.00	690,000.00
254	13-Apr-11	400,000.00	71.8000	400,000.00	9	8	465,000.00	465,000.00	865,000.00
255	20-Apr-11	400,000.00	71.8500	400,000.00	12	4	385,000.00	385,000.00	785,000.00
256	27-Apr-11	400,000.00	72.0000	400,000.00	13	3	344,240.00	344,240.00	744,240.00
257	4-May-11	500,000.00	72.3500	500,000.00	12	8	419,387.28	419,387.28	919,387.28
258	11-May-11	500,000.00	72.1000	500,000.00	14	0	-	125,189.17	625,189.17
259	18-May-11	500,000.00	72.1000	500,000.00	11	8	-	365,600.00	865,600.00
260	25-May-11	500,000.00	72.2000	500,000.00	13	10	-	457,380.00	957,380.00
261	1-Jun-11	500,000.00	72.2500	500,000.00	12	11	-	414,860.00	914,860.00
262	8-Jun-11	750,000.00	72.3000	750,000.00	18	9	-	401,200.00	1,151,200.00
263	15-Jun-11	750,000.00	72.2000	750,000.00	20	11	46,000.00	519,774.98	1,269,774.98
264	22-Jun-11	750,000.00	72.3250	750,000.00	18	8	190,000.00	575,000.00	1,325,000.00
265	29-Jun-11	1,000,000.00	72.2500	1,000,000.00	27	1	195,000.00	275,000.00	1,275,000.00
Total		15,950,000.00		15,950,000.00	351	120	4,958,057.28	4,339,801.43	24,735,261.43

Source : Central Bank of Liberia, Monrovia, Liberia.

MONEY AND BANKING

1.10b: Central Bank of Liberia Fx Auction - 2011

Auction No.	Date	FX Offered for sale by CBL (US\$)	Auction Rate L\$/US	Total Purchased US\$	No. of Accepted Bids	No. of Rejected Bids	Value of Rejected Bids (US\$)	Over/(Under) Subscription (US\$)	Total Value of Bids Submitted by Participating Banks/FX Bureaux (US\$)
266	6-Jul-11	1,000,000.00	72.3500	1,000,000.00	31	6	20,000.00	396,870.00	1,396,870.00
267	13-Jul-11	750,000.00	72.4000	750,000.00	21	3	-	200,000.00	950,000.00
268	20-Jul-11	750,000.00	72.4000	750,000.00	22	8	-	443,000.00	1,193,000.00
269	27-Jul-11	1,000,000.00	72.2500	1,000,000.00	22	-	20,000.00	90,000.00	910,000.00
270	3-Aug-11	600,000.00	72.4500	600,000.00	15	14	20,000.00	596,000.00	1,196,000.00
271	10-Aug-11	600,000.00	72.2000	600,000.00	19	5	-	372,000.00	972,000.00
272	17-Aug-11	500,000.00	72.2000	500,000.00	16	8	161,020.00	540,995.00	1,040,995.00
273	24-Aug-11	500,000.00	72.3500	500,000.00	12	9	100,000.00	415,280.00	915,280.00
274	31-Aug-11	500,000.00	72.2500	500,000.00	15	3	-	290,000.00	790,000.00
275	7-Sep-11	500,000.00	72.2100	500,000.00	13	11	-	447,900.00	947,900.00
276	14-Sep-11	500,000.00	72.2500	500,000.00	14	5	150,000.00	358,055.00	858,055.00
277	21-Sep-11	500,000.00	72.2889	500,000.00	13	13	50,000.00	605,000.00	1,105,000.00
278	28-Sep-11	500,000.00	72.1500	500,000.00	14	2	100,000.00	149,100.00	649,100.00
279	5-Oct-11	500,000.00	72.3500	500,000.00	17	0	500,000.00	433,300.00	933,300.00
280	12-Oct-11	1,000,000.00	72.0765	1,000,000.00	17	0	100,000.00	55,000.00	1,055,000.00
281	19-Oct-11	500,000.00	72.3000	500,000.00	10	6	-	167,500.00	667,500.00
282	26-Oct-11	500,000.00	72.2500	500,000.00	12	4	20,000.00	92,150.00	592,150.00
283	2-Nov-11	500,000.00	71.9000	500,000.00	14	2	0.00	160,000.00	660,000.00
284	9-Nov-11	500,000.00	71.2500	500,000.00	14	1	0.00	67,270.00	567,270.00
285	16-Nov-11	500,000.00	71.6500	500,000.00	13	6	0.00	183,000.00	683,000.00
286	23-Nov-11	500,000.00	71.6999	500,000.00	14	2	0.00	145,000.00	645,000.00
287	30-Nov-11	500,000.00	71.9000	500,000.00	13	7	0.00	322,900.00	822,900.00
288	7-Dec-11	500,000.00	71.8500	500,000.00	14	6	0.00	318,540.00	818,540.00
289	14-Dec-11	500,000.00	71.8000	500,000.00	13	3	0.00	165,425.00	665,425.00
290	21-Dec-11	500,000.00	71.8500	500,000.00	14	1	50,000.00	122,000.00	622,000.00
Special Window	22-Dec-11	8,000,000.00	71.0000	8,000,000.00	0.00	0.00	0.00	0.00	0.00
291	28-Dec-11	500,000.00	71.9889	500,000.00	14	4	50,000.00	242,360.00	742,360.00
Total		23,200,000.00		23,200,000.00	406	129	1,341,020.00	7,378,645.00	22,398,645.00

Source : Central Bank of Liberia, Monrovia, Liberia.

MONEY AND BANKING

1.10c Central Bank of Liberia Fx Auction - 2012

Auction No.	Date	FX Offered for sale by CBL (US\$)	Auction Rate L\$/US	Total Purchased US\$	No. of Accepted Bids	No. of Rejected Bids	Value of Rejected Bids (US\$)	Over/(Under) Subscription (US\$)	Total Value of Bids Submitted by Participating Banks/FX Bureaux (US\$)
292	4-Jan-12	500,000.00	72.2000	500,000.00	16	8	0.00	467,300.00	967,300.00
293	11-Jan-12	750,000.00	72.5000	750,000.00	20	10	0.00	506,340.00	1,256,340.00
294	18-Jan-12	1,000,000.00	72.4990	1,000,000.00	23	0	0.00	213,000.00	1,213,000.00
295	25-Jan-12	1,000,000.00	72.5000	1,000,000.00	29	0	0.00	419,000.00	1,419,000.00
Special Window	25-Jan-12	375,000.00	71.5000	375,000.00	-	-	-	-	-
Special Window	26-Jan-12	125,000.00	72.5000	125,000.00	-	-	-	-	-
296	1-Feb-12	1,500,000.00	72.3000	1,500,000.00	32	0	86,098.13	343,498.13	1,843,498.13
297	8-Feb-12	1,500,000.00	72.4000	1,500,000.00	35	0	0.00	634,834.00	2,134,834.00
298	15-Feb-12	1,500,000.00	72.6000	1,500,000.00	34	7	0.00	1,123,548.21	2,623,548.21
Special Window	21-Feb-12	500,000.00	73.0000	500,000.00	-	-	-	-	-
299	22-Feb-12	1,000,000.00	72.7665	1,000,000.00	29	13	0.00	1,158,667.00	2,158,667.00
300	29-Feb-12	1,000,000.00	73.0000	1,000,000.00	28	15	0.00	1,387,100.00	2,387,100.00
301	7-Mar-12	500,000.00	73.4900	500,000.00	15	23	150,000.00	1,152,200.00	1,652,200.00
302	16-Mar-12	500,000.00	73.5900	500,000.00	16	9	50,000.00	377,000.00	877,000.00
303	21-Mar-12	500,000.00	73.8000	500,000.00	17	19	250,000.00	1,073,200.00	1,573,200.00
304	28-Mar-12	500,000.00	73.9999	500,000.00	13	31	224,492.56	1,422,592.56	1,922,592.56
305	4-Apr-12	750,000.00	74.2400	750,000.00	17	20	0.00	744,000.00	1,494,000.00
306	11-Apr-12	1,000,000.00	74.4000	1,000,000.00	24	21	375,000.00	1,355,500.00	2,355,500.00
307	18-Apr-12	1,000,000.00	74.2000	1,000,000.00	22	11	100,000.00	1,112,240.00	2,112,240.00
308	25-Apr-12	1,000,000.00	74.4500	1,000,000.00	25	11	65,000.00	1,362,000.00	2,362,000.00
309	2-May-12	1,000,000.00	74.5000	1,000,000.00	31	7	-	1,194,000.00	2,194,000.00
Special Window	8-May-12	1,000,000.00	74.0000	1,000,000.00	-	-	-	-	-
310	9-May-12	1,000,000.00	74.7100	1,000,000.00	22	19	200,000.00	1,630,000.00	2,630,000.00
Special Window	15-May-12	1,000,000.00	74.5000	1,000,000.00	-	-	-	-	-
311	16-May-12	1,000,000.00	74.8500	1,000,000.00	23	10	-	1,079,000.00	2,079,000.00
312	23-May-12	2,200,000.00	74.8500	2,200,000.00	36	0	185,513.51	1,291,663.51	3,491,663.51
313	30-May-12	2,200,000.00	74.9000	2,200,000.00	35	0	-	1,934,000.00	4,134,000.00
314	6-Jun-12	3,000,000.00	74.7500	3,000,000.00	41	0	-	1,654,764.90	4,654,764.90
315	13-Jun-12	3,000,000.00	74.4525	3,000,000.00	43	0	-	1,683,000.00	4,683,000.00
316	20-Jun-12	3,000,000.00	74.1000	3,000,000.00	36	0	-	766,167.50	3,766,167.50
317	27-Jun-12	2,000,000.00	73.9525	2,000,000.00	34	0	-	1,282,500.00	3,282,500.00
318	4-Jul-12	1,000,000.00	73.7500	1,000,000.00	30	-	-	1,040,000.00	2,040,000.00
Special Window	Jul 10-Jul 16, 2012	500,000.00	73.7500	500,000.00	-	-	-	-	-
319	11-Jul-12	750,000.00	73.5000	750,000.00	30	-	-	1,577,500.00	2,327,500.00
Special Window	Jul 17-Jul 20, 2012	250,000.00	73.5000	250,000.00	-	-	-	-	-
320	18-Jul-12	750,000.00	73.0000	750,000.00	29.00	-	-	1,315,000.00	2,065,000.00
321	25-Jul-12	1,000,000.00	73.0000	1,000,000.00	27.00	-	70,000.00	1,095,000.00	2,095,000.00
Special Window	Jul 31-Aug 6, 2012	499,978.51	73.0000	499,978.51	-	-	-	-	-
322	1-Aug-12	2,000,000.00	73.0000	2,000,000.00	43	-	-	1,154,150.00	3,154,150.00
Special Window	Aug 6-Aug 10, 2012	500,000.00	72.9500	500,000.00	-	-	-	-	-
323	8-Aug-12	1,000,000.00	72.9500	1,000,000.00	41.00	-	-	1,855,200.00	2,855,200.00
Special Window	Aug 14-Aug 20, 2012	499,800.00	72.7500	499,800.00	-	-	-	-	-
324	15-Aug-12	1,000,000.00	72.7500	1,000,000.00	47	1	-	3,158,550.00	4,158,550.00
325	23-Aug-12	1,000,000.00	73.0000	100,000.00	33	11	100,000.00	1,663,800.00	2,663,800.00
326	29-Aug-12	900,000.00	73.0000	900,000.00	38	1	90,000.00	1,402,875.00	2,402,875.00
Total		48,549,778.51		47,649,778.51	1,014	247	1,946,104.20	41,629,190.81	85,029,190.81

Source : Central Bank of Liberia, Monrovia, Liberia.

REAL SECTOR

CENTRAL BANK OF LIBERIA

2.1a: Harmonized Consumer Price Index (HCPI) 2010

Function	Weight (%)	Jan-10	Feb-10	Mar-10	Apr-10	May-10	Jun-10
Food & Non-alcoholic Beverages	45.20	171.25	163.66	167.55	165.86	170.26	170.51
Alcoholic Beverages, Tobacco & Narcotics	3.03	134.46	138.92	137.89	138.46	141.56	144.03
Clothing & Footwear	7.75	157.40	155.44	155.14	154.29	153.88	155.83
Housing, Water, Electricity, Gas & other fuels	12.00	117.00	118.65	117.63	118.79	118.56	119.23
Furnishings, Household Equipment & Routine Maintenance of the House	5.25	179.07	179.99	178.87	177.14	176.43	179.29
Health	3.91	104.05	104.05	104.05	104.05	104.05	104.05
Transport	6.11	164.55	165.36	164.55	164.80	166.18	166.18
Communication	1.53	81.76	81.82	81.79	81.68	81.60	81.80
Recreation & Culture	3.85	129.92	130.16	130.06	129.59	129.25	130.10
Education	3.20	100.00	100.00	100.00	100.00	100.00	100.00
Restaurants & Hotels	4.64	251.51	252.52	252.12	256.76	255.30	258.99
Miscellaneous Goods & Services	3.53	135.79	135.20	133.83	132.67	131.84	133.52
General Index	100.00	157.15	154.04	155.44	145.85	156.81	157.64

Function	Weight (%)	Jul-10	Aug-10	Sep-10	Oct-10	Nov-10	Dec-10
Food & Non-alcoholic Beverages	45.20	178.35	182.36	187.70	181.21	179.55	174.20
Alcoholic Beverages, Tobacco & Narcotics	3.03	142.21	140.28	139.90	140.37	144.98	148.16
Clothing & Footwear	7.75	161.38	161.75	160.61	160.91	160.58	161.23
Housing, Water, Electricity, Gas & other fuels	12.00	121.16	121.99	121.87	121.65	121.30	121.02
Furnishings, Household Equipment & Routine Maintenance of the House	5.25	188.07	188.40	187.44	170.36	167.62	169.54
Health	3.91	104.39	104.39	104.39	104.39	104.39	104.05
Transport	6.11	171.88	171.88	171.88	172.15	172.15	174.06
Communication	1.53	86.44	86.47	86.39	86.41	86.13	86.17
Recreation & Culture	3.85	130.43	130.55	130.55	131.22	130.05	130.24
Education	3.20	100.00	100.00	100.00	100.00	100.00	100.00
Restaurants & Hotels	4.64	261.18	261.68	260.17	260.75	255.75	256.49
Miscellaneous Goods & Services	3.53	134.29	135.38	134.54	134.31	130.05	130.37
General Index	100.00	162.83	164.79	166.94	163.19	161.93	159.88

The Harmonized Consumer Price Index (HCPI) is an amalgamation of the Classification of Individual Consumption by Purpose (COICOP), consisting of twelve functions (major groups) together with the Monrovia Consumer Price Index (MCPI) and its weights obtained from the 1964 limited expenditure survey. The Survey sample comprised wage-earner and clerical-employee households of two or more persons with monthly income not exceeding US\$250.

Sources : Liberia Institute for Statistics & Geo-Information Services (LISGIS) and Central Bank of Liberia (CBL)

REAL SECTOR

CENTRAL BANK OF LIBERIA

2.1b: Harmonized Consumer Price Index (HCPI) -2011

Function	Weight (%)	Jan-11	Feb-11	Mar-11	Apr-11	May-11	Jun-11
Food & Non-alcoholic Beverages	45.20	182.11	184.33	181.13	180.83	183.77	189.34
Alcoholic Beverages, Tobacco & Narcotics	3.03	151.75	152.23	152.49	153.59	154.17	156.16
Clothing & Footwear	7.75	164.90	165.00	164.76	167.08	168.16	168.40
Housing, Water, Electricity, Gas & other fuels	12.00	122.33	121.50	122.88	125.47	126.63	126.57
Furnishings, Household Equipment & Routine Maintenance of the House	5.25	172.80	174.43	174.09	174.44	175.44	175.62
Health	3.91	104.05	104.05	104.05	104.05	104.05	104.05
Transport	6.11	174.87	176.23	197.02	198.76	206.76	206.79
Communication	1.53	86.44	86.44	86.40	86.39	86.47	86.48
Recreation & Culture	3.85	131.35	131.36	133.68	137.75	138.07	138.13
Education	3.20	100.00	100.00	100.00	100.00	100.00	100.00
Restaurants & Hotels	4.64	261.33	261.36	261.65	261.37	262.79	266.52
Miscellaneous Goods & Services	3.53	133.31	128.26	128.80	129.59	135.39	135.86
General Index	100.00	164.61	165.53	165.61	166.29	168.69	171.48

Function	Weight (%)	Jul-11	Aug-11	Sep-11	Oct-11	Nov-11	Dec-11
Food & Non-alcoholic Beverages	45.20	206.36	210.09	200.35	207.67	201.93	202.19
Alcoholic Beverages, Tobacco & Narcotics	3.03	155.58	155.44	157.38	157.58	156.92	161.23
Clothing & Footwear	7.75	169.61	169.04	168.24	168.63	167.4	168.77
Housing, Water, Electricity, Gas & other fuels	12.00	128.85	129.56	129.25	129.23	130.35	128.88
Furnishings, Household Equipment & Routine Maintenance of the House	5.25	187.47	187.05	189.98	190.38	189.08	189.7
Health	3.91	104.05	104.05	104.05	104.05	104.05	104.05
Transport	6.11	206.38	206.30	205.3	205.49	204.93	204.82
Communication	1.53	86.51	86.47	86.42	86.44	86.35	86.40
Recreation & Culture	3.85	137.02	136.85	136.62	136.73	136.36	136.54
Education	3.20	100.00	100.00	100.00	100.00	100.00	100.00
Restaurants & Hotels	4.64	267.10	266.32	265.32	265.81	264.20	264.97
Miscellaneous Goods & Services	3.53	135.54	135.03	134.77	132.01	134.32	134.57
General Index	100.00	180.09	181.73	177.31	180.62	177.93	178.19

The Harmonized Consumer Price Index (HCPI) is an amalgamation of the Classification of Individual Consumption by Purpose (COICOP), consisting of twelve functions (major groups) together with the Monrovia Consumer Price Index (MCPI) and its weights obtained from the 1964 limited expenditure survey.

The Survey sample comprised wage-earner and clerical-employee households of two or more persons with monthly income not exceeding US\$250.

Sources : Liberia Institute for Statistics & Geo-Information Services (LISGIS) and Central Bank of Liberia (CBL)

REAL SECTOR

CENTRAL BANK OF LIBERIA

2.1c: Harmonized Consumer Price Index (HCPI) -2012

Function	Weight (%)	Jan-12	Feb-12	Mar-12	Apr-12	May-12	Jun-12	Jul-12	Aug-12
Food & Non-alcoholic Beverages	45.20	203.80	209.91	204.29	202.02	202.79	210.47	217.83	225.86
Alcoholic Beverages, Tobacco & Narcotics	3.03	164.84	165.82	159.25	157.96	157.03	156.62	157.44	157.03
Clothing & Footwear	7.75	170.57	171.58	171.82	172.52	174.09	175.32	172.71	171.60
Housing, Water, Electricity, Gas & other fuels	12.00	130.42	131.30	131.92	130.94	132.63	132.07	135.24	130.96
Furnishings, Household Equipment & Routine Maintenance of the House	5.25	186.30	187.36	187.55	187.24	188.86	190.03	188.11	187.27
Health	3.91	104.05	104.05	104.05	104.05	104.05	104.05	104.05	104.05
Transport	6.11	204.55	205.23	207.02	208.96	209.74	209.25	205.37	205.49
Communication	1.53	86.52	86.60	86.60	86.66	86.78	86.86	86.68	86.60
Recreation & Culture	3.85	137.07	137.38	137.43	137.64	138.12	138.47	137.70	137.37
Education	3.20	100.00	100.00	100.00	100.00	100.00	100.00	100.00	100.00
Restaurants & Hotels	4.64	267.28	268.64	268.90	269.81	271.89	273.41	270.04	269.00
Miscellaneous Goods & Services	3.53	135.36	136.79	136.94	137.44	138.25	139.78	137.44	137.05
General Index	100.00	179.31	182.51	180.00	179.05	179.97	183.63	186.55	189.45

The Harmonized Consumer Price Index (HCPI) is an amalgamation of the Classification of Individual Consumption by Purpose (COICOP), consisting of twelve functions (major groups) together with the Monrovia Consumer Price Index (MCPI) and its weights obtained from the 1964 limited expenditure survey. The Survey sample comprised wage-earner and clerical-employee households of two or more persons with monthly income not exceeding US\$250.

Sources : Liberia Institute for Statistics & Geo-Information Services (LISGIS) and Central Bank of Liberia (CBL)

REAL SECTOR

CENTRAL BANK OF LIBERIA

2.2a: HCPI Inflation Rate - 2010 (Year-on-Year)

Function	Weight (%)	Jan-10	Feb-10	Mar-10	Apr-10	May-10	Jun-10
Food & Non-alcoholic Beverages	45.20	9.37	6.65	10.95	8.68	11.96	1.42
Alcoholic Beverages, Tobacco & Narcotics	3.03	15.34	20.63	11.80	10.83	14.14	12.38
Clothing & Footwear	7.75	11.54	11.86	14.80	16.14	8.13	4.63
Housing, Water, Electricity, Gas & other fuels	12.00	2.62	3.25	2.97	2.88	2.60	2.95
Furnishings, Household Equipment & Routine Maintenance of the House	5.25	23.98	25.19	18.58	15.02	1.05	2.27
Health	3.91	4.05	4.05	0.00	0.00	0.00	0.00
Transport	6.11	3.43	4.30	3.96	4.12	4.62	3.20
Communication	1.53	1.10	1.16	1.06	0.76	0.66	0.29
Recreation & Culture	3.85	4.40	4.56	7.88	3.33	1.64	1.49
Education	3.20	0.00	0.00	0.00	0.00	0.00	0.00
Restaurants & Hotels	4.64	107.10	88.76	88.06	90.58	7.30	5.99
Miscellaneous Goods & Services	3.53	13.49	12.95	13.47	14.57	4.03	1.28
General Rate of Inflation	100.00	12.88	11.45	13.21	11.92	8.01	2.50

Function	Weight (%)	Jul-10	Aug-10	Sep-10	Oct-10	Nov-10	Dec-10
Food & Non-alcoholic Beverages	45.20	4.22	3.49	7.13	7.25	7.73	8.98
Alcoholic Beverages, Tobacco & Narcotics	3.03	7.55	2.37	2.64	5.94	11.43	13.90
Clothing & Footwear	7.75	6.59	5.21	3.79	4.91	8.36	8.85
Housing, Water, Electricity, Gas & other fuels	12.00	2.43	3.34	5.28	3.36	3.74	4.42
Furnishings, Household Equipment & Routine Maintenance of the House	5.25	5.88	4.38	4.23	-4.35	-3.12	-1.90
Health	3.91	0.32	0.32	0.32	0.32	0.32	0.00
Transport	6.11	5.14	5.15	5.15	5.67	4.79	6.31
Communication	1.53	5.77	5.62	5.57	5.73	5.92	5.99
Recreation & Culture	3.85	0.70	0.50	0.12	1.11	1.55	1.72
Education	3.20	0.00	0.00	0.00	0.00	0.00	0.00
Restaurants & Hotels	4.64	5.65	3.20	2.91	3.92	5.05	5.41
Miscellaneous Goods & Services	3.53	0.33	-1.12	-1.55	0.50	0.13	0.43
General Rate of Inflation	100.00	4.18	3.34	5.17	4.89	5.67	6.61

The Harmonized Consumer Price Index (HCPI) is an amalgamation of the Classification of Individual Consumption by Purpose (COICOP), consisting of twelve functions (major groups) together with the Monrovia Consumer Price Index (MCPI) and its weights, obtained from the 1964 limited expenditure survey.

The Survey sample comprised wage-earner and clerical-employee households of two or more persons with monthly income not exceeding US\$250.

Sources : Liberia Institute for Statistics & Geo-Information Services (LISGIS) and the Central Bank of Liberia (CBL)

REAL SECTOR

CENTRAL BANK OF LIBERIA

2.2b: HCPI Inflation Rate - 2011 (Year-on-Year)

Function	Weight (%)	Jan-11	Feb-11	Mar-11	Apr-11	May-11	Jun-11
Food & Non-alcoholic Beverages	45.20	6.34	12.63	8.11	9.03	7.94	11.04
Alcoholic Beverages, Tobacco & Narcotics	3.03	12.86	9.58	10.59	10.92	8.90	8.42
Clothing & Footwear	7.75	4.77	6.15	6.20	8.29	9.28	8.07
Housing, Water, Electricity, Gas & other fuels	12.00	4.56	2.40	4.47	5.62	6.80	6.15
Furnishings, Household Equipment & Routine Maintenance of the House	5.25	-3.50	-3.09	-2.68	-1.52	-0.56	-2.05
Health	3.91	0.00	0.00	0.00	0.00	0.00	0.00
Transport	6.11	6.27	6.57	19.74	20.61	24.42	24.44
Communication	1.53	5.73	5.65	5.64	5.77	5.97	5.72
Recreation & Culture	3.85	1.10	0.92	2.78	6.30	6.82	6.17
Education	3.20	0.00	0.00	0.00	0.00	0.00	0.00
Restaurants & Hotels	4.64	3.91	3.50	3.78	1.79	2.94	2.91
Miscellaneous Goods & Services	3.53	-1.83	-5.13	-3.76	-2.32	2.69	1.75
General Rate of Inflation	100.00	4.74	7.45	6.54	7.39	7.58	8.78

Function	Weight (%)	Jul-11	Aug-11	Sep-11	Oct-11	Nov-11	Dec-11
Food & Non-alcoholic Beverages	45.20	15.71	15.21	6.74	14.60	12.47	16.07
Alcoholic Beverages, Tobacco & Narcotics	3.03	9.40	10.81	12.49	12.26	8.23	8.83
Clothing & Footwear	7.75	5.10	4.51	4.75	4.80	4.25	4.68
Housing, Water, Electricity, Gas & other fuels	12.00	6.34	6.21	6.06	6.23	7.46	6.50
Furnishings, Household Equipment & Routine Maintenance of the House	5.25	-0.31	-0.72	1.36	11.75	12.80	11.89
Health	3.91	-0.32	-0.32	-0.32	-0.32	-0.32	0.00
Transport	6.11	20.08	20.02	19.44	19.37	19.04	17.67
Communication	1.53	0.08	0.00	0.03	0.04	0.26	0.26
Recreation & Culture	3.85	5.05	4.83	4.65	4.20	4.85	4.83
Education	3.20	0.00	0.00	0.00	0.00	0.00	0.00
Restaurants & Hotels	4.64	2.26	1.78	1.98	1.94	3.30	3.30
Miscellaneous Goods & Services	3.53	0.94	-0.26	0.18	-1.72	3.28	3.22
General Rate of Inflation	100.00	10.60	10.27	6.21	10.68	9.88	11.45

The Harmonized Consumer Price Index (HCPI) is an amalgamation of the Classification of Individual Consumption by Purpose (COICOP), consisting of twelve functions (major groups) together with the Monrovia Consumer Price Index (MCPI) and its weights, obtained from the 1964 limited expenditure survey.

The Survey sample comprised wage-earner and clerical-employee households of two or more persons with monthly income not exceeding US\$250.

Sources: Liberia Institute for Statistics & Geo-Information Services (LISGIS) and Central Bank of Liberia (CBL)

REAL SECTOR

CENTRAL BANK OF LIBERIA

2.2c: HCPI Inflation Rate - 2012(Year-on-Year)

Function	Weight (%)	Jan-12	Feb-12	Mar-12	Apr-12	May-12	Jun-12	Jul-12	Aug-12
Food & Non-alcoholic Beverages	45.20	11.91	13.95	12.79	11.72	10.35	11.16	5.56	7.51
Alcoholic Beverages, Tobacco & Narcotics	3.03	8.63	8.93	4.43	2.85	1.86	0.29	1.2	1.02
Clothing & Footwear	7.75	3.43	3.99	4.28	3.26	3.53	4.1	1.82	1.52
Housing, Water, Electricity, Gas & other fuels	12.00	6.61	8.07	7.36	4.36	4.74	4.35	4.96	1.08
Furnishings, Household Equipment & Routine Maintenance of the House	5.25	7.81	7.41	7.73	7.34	7.65	8.21	0.34	0.12
Health	3.91	0	0	0	0	0	0	0	0.00
Transport	6.11	16.97	16.46	5.07	5.13	1.44	1.19	-0.49	-0.39
Communication	1.53	0.1	0.18	0.23	0.32	0.36	0.44	0.19	0.15
Recreation & Culture	3.85	4.35	4.58	2.81	-0.08	0.03	0.24	0.49	0.38
Education	3.20	0	0	0	0	0	0	0.00	0.00
Restaurants & Hotels	4.64	2.28	2.79	2.77	3.23	3.46	2.59	1.10	1.00
Miscellaneous Goods & Services	3.53	1.54	6.65	6.32	6.05	2.12	2.89	1.40	1.50
General Rate of Inflation	100.00	8.93	10.3	8.69	7.67	6.69	7.08	3.58	4.25

The Harmonized Consumer Price Index (HCPI) is an amalgamation of the Classification of Individual Consumption by Purpose (COICOP), consisting of twelve functions (major groups) together the Monrovia Consumer Price Index (MCPI) and its weights, obtained from the 1964 limited expenditure survey.

The Survey sample comprised wage-earner and clerical-employee households of two or more persons with monthly income not exceeding US\$250.

Sources : Liberia Institute for Statistics & Geo-Information Services (LISGIS) and Central Bank of Liberia (CBL)

REAL SECTOR

CENTRAL BANK OF LIBERIA

2.3a: Key Output Volume - 2010

Commodity	Unit	Jan-10	Feb-10	March-10	April-10	May-10	June-10	Jan-Jun Total
Agriculture								
Rubber	Mt.	6,387.35	4,020	3,053.40	2,390.60	5,674.00	4,334.40	25,859.30
Cocoa Beans	Mt.	345	693	696.00	720.00	420.00	225.00	3,099.00
Coffee	Mt.	-	-	-	17.00	162.00	162.00	341.00
Round Logs	M ³	-	-	-	-	-	-	-
Sawn Timber	Pcs.	50,506	57,765	73,508.00	56,215.00	47,959.00	39,861.00	325,814.00
Fish	Kg.	-	-	-	-	-	-	-
Mining								
Gold	Ounces	1,772	1,747	1,893.00	2,654.06	2,050.24	1,588.18	11,704.48
Diamond	Carat	2,291	1,382	1,247.49	1,644.91	1,271.34	1,999.16	9,835.90
Manufacturing								
Cement	Mt.	10,097	7,759	5,283.00	10,121.00	6,929.00	9,204.00	49,393.00
Spirit	Litre	109,091	96,001	101,898.00	72,283.00	74,067.30	78,598.35	531,938.00
Beer	Litre	792,317	413,662	737,246.00	872,191.88	850,896.52	192,616.56	3,858,929.96
Stout	Litre	297,150	120,685	271,363.00	377,839.44	275,164.56	165,488.40	1,507,690.40
Malta	Litre	-	-	88,506.00	178,683.12	-	-	-
Soft Drink	Litre	961,682	806,909	1,124,273.00	1,259,222.40	864,273.60	953,359.20	5,969,719.20
Oil Paint	Gal.	2,400	3,600	2,840.00	4,200.00	5,520.00	4,652.00	23,212.00
Water Paint	Gal.	12,600	20,200	24,750.00	29,125.00	31,920.00	33,650.00	152,245.00
Varnish	Gal.	600	900	710.00	1,050.00	1,380.00	1,163.00	5,803.00
Manoline Hair Grease	Kg.	16,842	6,560	4,704.00	15,834.00	2,679.60	3,360.00	49,980.00
Thinner	Gal.	350	1,000	1,215.00	1,500.00	1,200.00	1,850.00	7,115.00
Rubbing Alcohol	Litre	22,473	44,947	35,957.50	429,782.02	26,473.71	34,429.31	594,062.85
Soap	Kg.	17,897	14,469	14,222.25	-	11,250.75	4,520.25	62,359.25
Chlorox	Litre	62,661	32,032	106,006.50	56,089.92	79,696.96	91,381.26	427,867.76
Nail	Kg.	-	-	-	-	-	-	-
Candle	Kg.	40,845	25,085	66,979.50	48,331.50	54,064.50	41,968.50	277,273.50
Mattresses	Pcs.	8,015	8,623	9,076.00	10,725.00	12,990.00	11,857.00	61,286.00
Finished Water ¹	Gal.	112,144,261	114,185,239	99,883,839.35	130,694,247.20	108,343,202.40	108,345,412.80	673,596,202.57

¹: Water from White Plains Treatment Plant

Sources : Lands, Mines & Energy; Commerce & Industry; Forestry Development Authority (FDA);
Liberia Produce Marketing Corporation (LPMC) and Liberia Water & Sewer Corporation (LWSC), Monrovia, Liberia

REAL SECTOR

CENTRAL BANK OF LIBERIA

2.3a: Key Output Volume - 2010 (continued)

Commodity	Unit	Jul-10	Aug-10	Sep-10	Oct-10	Nov-10	Dec-10	Jul-Dec Total	Grand Total
Agriculture									
Rubber	Mt.	6,048.00	4,471.00	6,609.00	6,484.00	8,131.00	4,974.00	36,717.00	62,576.30
Cocoa Beans	Mt.	240.00	428.00	478.00	648.30	964.16	1,255.68	4,014.14	7,113.14
Coffee	Mt.	11.00	-	-	27.30	-	-	38.30	379.30
Round Logs	M ³	6,021.00	-	-	-	1,230.00	-	7,251.00	7,251.00
Sawn Timber	Pcs.	29,126.00	42,235.00	28,886.00	40,047.00	42,381.00	35,294.00	217,969.00	543,783.00
Fish	Kg.	-	-	-	-	-	-	-	-
Mining									
Gold	Ounces	948.00	2,172.00	2,265.00	1,355.60	1,127.96	1,828.71	9,697.27	21,401.75
Diamond	Carat	1,857.00	1,027.00	1,031.84	4,906.01	144.47	3,216.24	12,182.56	22,018.46
Manufacturing									
Cement	Mt.	5,063.00	3,039.00	4,294.00	4,025.00	3,137.00	2,782.00	22,340.00	71,733.00
Spirit	Litre	86,325.00	74,482.00	74,392.00	75,140.10	65,551.50	93,210.75	469,101.35	1,001,039.35
Beer	Litre	685,461.00	655,010.00	640,272.00	603,015.16	679,754.76	920,246.12	4,183,759.04	8,042,689.00
Stout	Litre	423,633.00	230,012.64	323,991.00	284,225.04	432,202.32	667,069.92	2,361,133.92	3,868,824.32
Malta	Litre	119,964.00	527,844.24	-	99,649.44	84,577.68	29,755.44	861,790.80	861,790.80
Soft Drink	Litre	834,250.00	829,519.20	797,026.00	804,578.40	887,616.00	1,293,091.20	5,446,080.80	11,415,800.00
Oil Paint	Gal.	960.00	2,954.00	880.00	2,600.00	2,260.00	2,440.00	12,094.00	35,306.00
Water Paint	Gal.	9,190.00	10,020.00	7,550.00	16,520.00	10,850.00	20,235.00	74,365.00	226,610.00
Varnish	Gal.	240.00	213.00	220.00	650.00	565.00	610.00	2,498.00	8,301.00
Manoline Hair Grease	Kg.	5,040.00	5,939.00	3,301.00	3,822.00	2,889.60	4,729.20	25,720.80	75,700.80
Thinner	Gal.	750.00	1,600.00	800.00	1,200.00	1,500.00	2,470.00	8,320.00	15,435.00
Rubbing Alcohol	Litre	20,945.00	44,542.00	-	45,171.61	34,339.41	4,899.21	149,897.23	743,960.08
Soap	Kg.	79,042.00	70,171.00	52,434.00	60,443.10	67,882.95	49,560.75	379,533.80	441,893.05
Chlorox	Litre	15,750.00	21,546.00	21,777.00	52,963.51	62,024.80	60,355.61	234,416.91	662,284.67
Nail	Kg.	-	-	-	-	-	-	-	-
Candle	Kg.	41,748.00	51,135.00	44,457.00	53,298.00	52,594.50	58,338.00	301,570.50	578,844.00
Mattresses	Pcs.	13,750.00	11,300.00	9,889.00	7,010.00	7,290.00	11,504.00	60,743.00	122,029.00
Finished Water ¹	Gal.	102,199,432.00	120,634,490.60	110,392,375.01	122,754,200.00	125,225,220.00	153,571,663.00	734,777,380.61	1,408,373,583.18

¹: Water from White Plains Treatment Plant

Sources : Lands, Mines & Energy; Commerce & Industry; Forestry Development Authority (FDA); Liberia Produce Marketing Corporation (LPMC) and Liberia Water & Sewer Corporation (LWSC), Monrovia, Liberia

REAL SECTOR

CENTRAL BANK OF LIBERIA

2.3b: Key Output Volume - 2011

Commodity	Unit	Jan-11	Feb-11	Mar-11	Apr-11	May-11	Jun-11	Jan-Jun Total
Agriculture								
Rubber	Mt.	7,255.00	19,455.00	521.00	11,813.48	5,481	5,938	50,463.45
Cocoa Beans	Mt.	2,023.00	172.00	3,742.00	3,329.00	5,941	4,106	19,313.00
Coffee	Mt.	-	-	-	-	-	154	154.00
Round Logs	M ³	10,819.00	2,629.00	3,042.00	6,725.36	2,813	10,803	36,831.36
Sawn Timber	Pcs.	27,228.00	41,540.00	48,464.00	42,968.00	50,002	28,161	238,363.00
Fish	Kg.	-	-	-	-	-	-	-
Mining								
Gold	Ounces	1,556.00	1,127.00	1,237.00	1,595.00	1,577	1,573	8,665.00
Diamond	Carat	2,210.00	2,097.00	3,206.00	558.01	4,686	5,291	18,048.01
Iron Ore	Mt.	-	-	-	-	-	-	0.00
Manufacturing								
Cement	Mt.	2,553.00	3,507.00	2,651.00	7,263.00	3,166	9,543	28,683.00
Spirit	Litre	59,544.00	52,832.00	60,873.00	58,704.21	61,647	66,489	360,089.21
Beer	Litre	616,550.00	639,543.00	841,177.00	933,970.16	894,377	955,400	4,881,017.16
Stout	Litre	309,324.00	378,774.00	438,926.00	427,299.84	401,916	492,117	2,448,356.84
Malta	Litre	98,208.00	96,188.00	62,220.00	64,088.64	132,018	101,677	554,400.08
Soft Drink	Litre	1,182,283.00	1,109,477.00	1,237,003.00	1,374,459.84	1,166,695	939,190	7,009,107.64
Oil Paint	Gal.	1,400.00	4,080.00	3,440.00	2,760.00	3,280	1,640	16,600.00
Water Paint	Gal.	13,550.00	27,750.00	19,850.00	25,688.00	14,650	16,200	117,688.00
Varnish	Gal.	350.00	1,020.00	860.00	690.00	820	410	4,150.00
Manoline Hair Grease	Kg.	5,687.00	3,637.00	4,099.00	5,686.80	2,327	3,620	25,057.00
Thinner	Gal.	2,300.00	3,500.00	3,000.00	3,125.00	2200	2500	16,625.00
Rubbing Alcohol	Litre	22,518.00	21,035.00	-	22,518.38	32,946	34,654	133,671.48
Soap	Kg.	37,122.00	48,855.00	15,755.00	37,121.55	41,715	43,406	223,974.65
Chlorox	Litre	77,047.00	67,986.00	42,127.00	106,218.46	132,581	52,964	478,922.94
Nail	Kg.	-	-	-	-	-	-	0.00
Candle	Kg.	43,176.00	49,193.00	32,666.00	59,115.00	37,664	31,574	253,387.00
Mattresses	Pcs.	12,600.00	13,130.00	14,960.00	11,205.00	15,989	12,874	80,758.00
Finished Water ¹	Gal.	178,985,090.50	162,390,947.44	148,029,162.25	150,802,081.28	149,163,690	140,788,206	930,159,177.79

1: Water from White Plains Treatment Plant

Sources : Lands, Mines & Energy; Commerce & Industry; Forestry Development Authority (FDA);

Liberia Produce Marketing Corporation (LPMC) and Liberia Water & Sewer Corporation (LWSC), Monrovia, Liberia

REAL SECTOR

CENTRAL BANK OF LIBERIA

2.3b: Key Output Volume - 2011 -Continued

Commodity	Unit	Jul-11	Aug-11	Sep-11	Oct-11	Nov-11	Dec-11	Jul-Dec Total	Grand Total
Agriculture									
Rubber	Mt.	8,567	9,696	3,123	11,163	1,684	8,883	43,116	93,580
Cocoa Beans	Mt.	1,015	843	2,014	1,077	1,020	1,410	7,379	26,692
Coffee	Mt.	-	27	-	na	na	na	27	181
Round Logs	M ³	16,147	2,375	303	9,129	7,024	2,298	37,275	74,106
Sawn Timber	Pcs.	30,325	21,540	12,412	9,160	10,540	9,200	93,177	331,540
Fish	Kg.	-	-	-	-	-	-	-	-
Mining									
Gold	Ounces	969	1,329	1,016	443	1,210	1,196	6,163	14,828
Diamond	Carat	4,526	7,849	3,410	3,777	1,095	1,162	21,819	39,867
Iron Ore	Mt.	-	-	6,821	38,800	146,647	104,701	296,969	296,969
Manufacturing									
Cement	Mt.	7,429	9,557	6,413	6,637	10,306	11,569	51,911	80,594
Spirit	Litre	52,576	54,104	52,777	54,879	52,424	62,541	329,301	689,390
Beer	Litre	920,658	927,094	700,401	727,354	689,083	1,071,264	5,035,854	9,916,871
Stout	Litre	489,290	489,377	428,670	422,160	504,623	599,386	2,933,506	5,381,863
Malta	Litre	-	203,314	64,350	32,622	67,502	66,306	434,094	988,494
Soft Drink	Litre	1,100,117	950,998	796,644	1,027,296	1,122,422	1,519,949	6,517,426	13,526,534
Oil Paint	Gal.	3,440	1,200	2,096	2,150	4,865	4,580	18,331	34,931
Water Paint	Gal.	24,200	21,525	16,150	20,850	25,750	34,085	142,560	260,248
Varnish	Gal.	860	300	524	430	973	916	4,003	8,153
Manoline Hair Grease	Kg.	2,495	1,772	1,940	na	3,167	3,360	12,734	37,791
Thinner	Gal.	1,425	860	495	1,800	2,420	2,702	9,702	26,327
Rubbing Alcohol	Litre	-	13,529	24,676	28,361	20,945	-	87,511	221,182
Soap	Kg.	52,205	47,376	54,203	20,391	27,917	33,022	235,114	459,089
Chlorox	Litre	8,293	53,440	32,112	52,964	42,339	26,521	215,669	694,592
Nail	Kg.	-	-	-	-	-	-	-	-
Candle	Kg.	43,281	31,479	26,891	42,011	20,979	24,549	189,190	442,577
Mattresses	Pcs.	9,870	7,917	9,740	10,210	9,835	13,670	61,242	142,000
Finished Water ¹	Gal.	-	-	-	-	-	-	-	930,159,178

1: Water from White Plains Treatment Plant

Sources : Lands, Mines & Energy; Commerce & Industry; Forestry Development Authority (FDA);

Liberia Produce Marketing Corporation (LPMC) and Liberia Water & Sewer Corporation (LWSC), Monrovia, Liberia

REAL SECTOR

CENTRAL BANK OF LIBERIA

2.3c: Key Output Volume - 2012

Commodity	Unit	Jan-12	Feb-12	Mar-12	Apr-12	May-12	Jun-12	Jan-Jun Total	Jul-12	Aug-12
Agriculture										
Rubber	Mt.	5,766	3,564	12,125	344	947	12,097	34,843	856	601
Cocoa Beans	Mt.	1,305	1,230	963	672	674	367	5,210	165	255
Coffee	Mt.	-	-	-	38	97	-	135	-	-
Round Logs	M ³	22,509	8,177	14,256	26,027	19,547	7,949	98,466	na	na
Sawn Timber	Pcs.	34,632	50,908	7,160	30,110	20,585	10,881	154,276	na	na
Fish	Kg.	-	-	-	-	-	-	-	-	-
Mining										
Gold	Ounces	1,645	1,458	1,558	2,098	1,118	2,288	10,165	2,161	1,131
Diamond	Carat	2,856	3,288	3,802	2,644	3,400	1,282.00	17,272	2,819	3,092
Iron Ore	Mt.	132,000	396,000	462,000	396,000	189,000	-	1,575,000	22,800	342,000
Manufacturing										
Cement	Mt.	10,662	14,580	12,462	13,322	11,065	9,362	71,452	9,370	7,759
Spirit	Litre	52,453	53,100	58,243	59,624	63,063	66,234	352,717	81,436	75,576
Beer	Litre	733,228	721,010	913,481	725,199	753,233	786,849	4,633,000	846,940	957,096
Stout	Litre	309,324	378,774	438,926	385,569	370,466	490,525	2,373,584	510,777	805,163
Malta	Litre	98,208	96,188	62,220	33,343	50,157	52,953	393,070	70,194	102,532
Soft Drink	Litre	1,095,732	1,156,334	1,178,100	1,120,637	1,194,912	1,123,992	6,869,707	863,006	648,130
Oil Paint	Gal.	4,538	3,172	3,040	4,125	2,760	1,589	19,223	6,116	6,322
Water Paint	Gal.	29,245	20,235	20,627	27,180	24,840	17,975	140,102	33,192	36,429
Varnish	Gal.	1,134	793	760	1,031	690	397	4,806	1,529	1,581
Manoline Hair Grease	Kg.	4,276	1,050	4,696	1,957	3,436	4,696	20,111	-	5,687
Thinner	Gal.	1,745	1,470	875	1,620	1,500	860	8,070	2,611	2,217
Rubbing Alcohol	Litre	20,676	-	11,237	22,473	25,440	11,237	91,062	12,450	21,979
Soap	Kg.	35,520	68,321	20,718	32,027	28,222	20,718	205,526	38,113	40,784
Chlorox	Litre	66,238	55,587	55,984	62,131	49,546	55,984	345,468	55,666	79,512
Nail	Kg.	-	-	-	-	-	-	-	-	-
Candle	Kg.	31,574	21,011	31,563	13,640	26,250	31,563	155,601	30,345	25,788
Mattresses	Pcs.	10,050	9,833	9,970	8,975	9,039	7,750	55,617	7,026	5,830
Finished Water ^{1*}	Gal.	68,366,386	59,415,052	52,688,677	199,794,720	185,545,039	178,825,333	744,635,206	148,477,928	167,903,679

1: Water from White Plains Treatment Plant

* Estimates

Sources : Lands, Mines & Energy; Commerce & Industry; Forestry Development Authority (FDA);
Liberia Produce Marketing Corporation (LPMC) and Liberia Water & Sewer Corporation (LWSC), Monrovia, Liberia

REAL SECTOR

CENTRAL BANK OF LIBERIA

2.4a: Key Output Value - 2010
Liberian dollars

Commodity	Unit	Jan-10	Feb-10	Mar-10	Apr-10	May-10	Jun-10	Jan-Jun Total
Agriculture								
Rubber ^{3*}	Mt.	1,027,906,671	766,577,381	513,626,035	293,995,210	1,226,056,077.00	631,984,627.00	4,460,146,001.00
Cocoa Beans ⁴	Mt.	49,217,700.00	99,487,080.00	49,397,100.00	101,822,400.00	59,707,200	32,251,500	391,882,980.00
Coffee ⁴	Mt.				2,404,140.00	23,029,920	23,221,080	48,655,140.00
Round Logs ³	M ³							-
Sawn Timber ⁴	Pcs.	2,088,828	2,380,153	3,157,248	2,384,978	2,045,355	1,690,308	13,746,870.30
Fish ⁴	Kg.							-
Mining⁴								
Gold	Ounces	109,317,476	103,608,060	115,887,280	162,280,898	134,207,290.26	106,674,033.65	731,975,038.24
Diamond	Carat	37,650,958	44,971,268	29,118,160	535,828,047	28,315,519	48,320,645	724,204,597.62
Manufacturing⁴								
Cement	Mt.	128,919,203	99,692,443	67,699,585	128,102,408	88,891,656	117,105,437	630,410,731.14
Spirit	Litre	5,792,275	5,646,600	5,885,275	4,420,275	4,383,875	4,338,900	30,467,200.00
Beer	Litre	97,636,985	54,406,005	91,725,880	107,849,600	107,159,425	26,862,225	485,640,120.00
Stout	Litre	57,028,880	23,161,760	52,079,760	72,514,640	52,809,360	31,760,400	289,354,800.00
Malta	Litre	-	-	12,124,875.00	24,478,685.00	-	-	36,603,560.00
Soft Drink	Litre	52,932,140	54,739,590	68,605,190	67,164,260	60,342,740	53,868,660	357,652,580.00
Oil Paint	Gal.	2,225,496	3,359,304	2,643,103	3,860,766	5,100,701	4,334,315	21,523,684.52
Water Paint	Gal.	5,219,929	8,513,826	10,146,988	11,882,816	13,134,678	13,967,229	62,865,464.83
Varnish	Gal.	556,374	839,826	660,776	965,192	1,275,175	1,083,579	5,380,921.13
Manoline Hair Grease	Kg.	567,074	366,078	386,586	594,759	207261.4612	777653.1849	2,899,411.63
Thinner	Gal.	249,655	717,800	869,819	1,060,650	852,960	1,325,895	5,076,778.50
Rubbing Alcohol	Litre	200,616	205,075	392,385	342,819	312,558	390,835	1,844,288.02
Soap	Kg.	827,428	803,936	927,806	34,695	512,674	42,867	
Chlorox	Litre	2,198,141	994,871	2,493,730	2,254,251	2,700,282	3,382,299	14,023,574.02
Nail	Kg.	-	-	-	-	0	0	-
Candle	Kg.	5,390,051	4,261,938	8,068,193	5,819,361	7,433,111	7,533,783	38,506,436.20
Mattresses	Pcs.	15,884,374.98	19,501,090.63	20,950,036.75	17,077,112.70	20,197,900	20,150,235	113,760,750.03
Finished Water ²	Gal.	129,642,251	21,187,940	18,991,377	24,550,717	27,814,728	24,120,689	246,307,701.66

1. Water from White Plains Treatment Plant.

2. Represents Export values

3. Represents quantity sold, not quantity produced

NB: Production data are collected quarterly.

Sources : Lands, Mines & Energy; Commerce & Industry; Forestry Development Authority (FDA);

Liberia Produce Marketing Corporation (LPMC) and Liberia Water & Sewer Corporation (LWSC), Monrovia, Liberia

REAL SECTOR

CENTRAL BANK OF LIBERIA

2.4a: Key Output Value - 2010 (continued)

Liberian dollars

Commodity	Unit	Jul-10	Aug-10	Sep-10	Oct-10	Nov-10	Dec-10	Jul-Dec Total	Grand Total
Agriculture									
Rubber ^{3*}	Mt.	986,975,370	940,520,750	1,167,576,152	1,208,324,192.40	1,199,143,106	1,237,594,993.30	5,753,159,193.30	10,213,305,194.30
Cocoa Beans ⁴	Mt.	31,402,776	56,185,296	61,558,968	648.30	964	1,255.68	117,747,132.14	509,630,112.14
Coffee ⁴	Mt.	477,114	-	-	27.30	-	-	27.30	48,655,167.30
Round Logs ³	M ³	9,274,019	-	-	11,149,677.00	4,983,559	-	16,133,236.00	16,133,236.00
Sawn Timber ⁴	Pcs.	1,263,311.12	1,837,223	2,075,459.00	40,047.00	42,381.00	35,294.00	4,030,403.50	17,777,273.80
Fish ⁴	Kg.	-	-	-	-	-	-	-	-
Mining⁴									
Gold	Ounces	62,766,920.00	146,077,587.08	156,059,323.00	1,355.60	1,127.96	1,828.71	302,141,222.35	1,034,116,260.58
Diamond	Carat	38,241,935	15,561,267	66,738,447	4,906.01	144	3,216.24	82,307,981.02	806,512,578.64
Manufacturing⁴									
Cement	Mt.	65,514,764	39,438,623	55,225,778	4,025.00	3,137	2,782.00	94,674,344.50	725,085,075.64
Spirit	Litre	25,042,500	4,986,250	4,785,250	75,140.10	65,552	93,210.75	10,005,402.35	40,472,602.35
Beer	Litre	92,207,250	61,169,290	58,587,785	603,015.16	679,755	920,246.12	121,960,091.04	607,600,211.04
Stout	Litre	72,991,920	48,652,160	53,160,480	284,225.04	432,202	667,069.92	103,196,137.28	392,550,937.28
Malta	Litre	10,166,805	6,581,565	6,162,390	99,649.44	84,578	29,755.44	12,957,937.56	49,561,497.56
Soft Drink	Litre	53,792,695	40,479,550	44,397,575	804,578.40	1,293,091	1,293,091.20	88,267,885.80	445,920,465.80
Oil Paint	Gal.	2,775,705	2,466,334	1,544,545	2,600.00	10,850	2,440.00	4,026,769.00	25,550,453.52
Water Paint	Gal.	7,254,703	6,268,658	5,022,725	16,520.00	10,850	20,235.00	11,338,988.13	74,204,452.96
Varnish	Gal.	693,926	616,584	386,136	650.00	565	610.00	1,004,544.50	6,385,465.63
Manoline Hair Grease	Kg.	721548.8999	477687.275	525,774.00	3,822.00	2,889.60	4,729.20	1,014,902.08	3,914,313.71
Thinner	Gal.	766,997	1,078,800	746,522	1,200.00	1,500	2,470.00	1,830,492.00	6,907,270.50
Rubbing Alcohol	Litre	143,570	409,091	346,831	45,171.61	34,339	4,899.21	840,331.91	2,684,619.93
Soap	Kg.	4,499,647	4,141,309	4,089,645	60,443.10	67,883	49,560.75	8,408,840.55	8,408,840.55
Chlorox	Litre	2,497,040	2,562,075	2,366,638	52,963.51	62,025	60,355.61	5,104,057.24	19,127,631.25
Nail	Kg.	-	-	-	-	-	-	-	-
Candle	Kg.	8,351,852	7,123,965	6,988,648.00	7,208,722.00	52,594.50	58,338.00	21,432,267.78	59,938,703.97
Mattresses	Pcs.	22,280,815	18,135,265	15,283,836.00	12,286,441.00	7,290.00	11,504.00	45,724,336.28	159,485,086.30
Finished Water ^{2*}	Gal.	25,442,371	27,532,390	25,237,964.33	20,949,743	23,346,197.09	26,189,803	123,256,097.78	369,563,799.44

1. Water from White Plains Treatment F NB: Production data are collected quarterly.

2. Represents Export values

3. Represents quantity sold, not quantity produced

Sources : Lands, Mines & Energy; Commerce & Industry; Forestry Development Authority (FDA);

Liberia Produce Marketing Corporation (LPMC) and Liberia Water & Sewer Corporation (LWSC), Monrovia, Liberia

REAL SECTOR

CENTRAL BANK OF LIBERIA

2.4b: Key Output Value - 2011

Liberian dollars

Commodity	Unit	Jan-11	Feb-11	Mar-11	Apr-11	May-11	Jun-11	Jan-Jun Total
Agriculture								
Rubber ^{3*}	Mt.	1,065,111,275.00	1,896,180,510.00	61,564,658.00	2,717,956,750	1,771,401,160.10	49,214,088.00	7,561,428,440.70
Cocoa Beans ⁴	Mt.	366,596,250.00	31,080,400.00	673,242,648.00	599,892,510	956,034,365.00	150,419,940.00	2,777,266,113.00
Coffee ⁴	Mt.	-	-	-	-	-	-	-
Round Logs ³	M ³	11,149,677.00	4,983,559.00	4,441,356.00	9,823,248	1,029,964	NA	31,427,804.02
Sawn Timber ³	Pcs.	1,184,418.00	1,801,507.00	2,092,482.00	1,853,066	2,178,073	NA	9,109,546.00
Fish ⁴	Kg.	-	-	-	-	-	-	-
Mining⁴								
Gold	Ounces	88,911,020.00	84,379,293.00	96,911,491.00	127,497,677	132,079,568.69	133,975,029.41	663,754,078.98
Diamond	Carat	248463206*	58,668,536.00	108,304,038.00	14,167,692	107,521,670.35	178,383,748.09	715,508,890.92
Iron Ore	Mt.	-	-	-	-	-	-	-
Manufacturing⁴								
Cement	Mt.	30,725,355.00	42,078,669.00	31,667,149.00	86,662,697	38,097,554.44	115,008,418.80	344,239,843.28
Spirit	Litre	4,138,250.00	3,705,400.00	3,269,100.00	3,606,975	13,646,525.00	3,646,225.00	32,012,475.00
Beer	Litre	71,932,605.00	97,483,495.00	104,318,560.00	117,647,025	117,513,585.00	126,937,865.00	635,833,135.00
Stout	Litre	54,666,800.00	76,229,520.00	84,276,400.00	82,007,040	77,135,440.00	94,446,720.00	468,761,920.00
Malta	Litre	9,695,880.00	10,536,300.00	10,728,810.00	8,375,220	8,375,220.00	17,252,415.00	64,963,845.00
Soft Drink	Litre	67,338,000.00	70,391,160.00	78,547,650.00	77,154,630	77,154,630.00	69,559,810.00	440,145,880.00
Oil Paint	Gal.	2,465,580.00	3,274,457.00	3,106,542.00	2,727,846	3,269,299.00	1,637,130.00	16,480,854.00
Water Paint	Gal.	6,239,067.00	10,099,197.00	9,062,984.00	11,324,665	6,468,282.70	7,159,474.85	50,353,670.80
Varnish	Gal.	616,395.00	818,614.00	776,635.00	681,962	817,324.75	409,282.50	4,120,212.75
Manoline Hair Grease	Kg.	502,425.00	517,597.08	391,822.20	426,967.20	406,668.90	57,499,200.00	59,744,680.38
Thinner	Gal.	1,660,250.00	2,405,478.00	2,301,065.00	2,470,875	1,754,258.00	1,996,500.00	12,588,426.00
Rubbing Alcohol	Litre	309,031.00	219,551.00	420,426.00	705,538	497,673.00	705,538.14	2,857,757.28
Soap	Kg.	4,625,790.00	3,406,195.00	3,461,636.00	2,804,758	3,322,542.91	5,019,382.50	22,640,304.01
Chlorox	Litre	2,041,056.00	1,986,616.00	1,915,378.00	3,296,021	3,922,470.15	2,437,726.50	15,599,268.11
Nail	Kg.	-	-	-	-	-	-	-
Candle	Kg.	7,850,300.00	10,061,376.00	6,735,456.00	8,729,970	8,094,958.30	7,260,726.00	48,732,786.06
Mattresses	Pcs.	21,366,882.00	25,265,446.00	33,301,257.00	23,213,839	43,104,473.54	32,057,134.76	178,309,031.93
Finished Water ^{2*}	Gal.	30,312,436.00	27,821,676.00	19,605,862.00	29,384,082	28,323,348.90	27,002,300.08	162,449,704.89

1. Water from White Plains Treatment Plant.

NB: Production data are collected quarterly.

2. Represents Export values

3. Represents quantity sold, not quantity produced

Sources : Lands, Mines & Energy; Commerce & Industry; Forestry Development Authority (FDA);

Liberia Produce Marketing Corporation (LPMC) and Liberia Water & Sewer Corporation (LWSC), Monrovia, Liberia

REAL SECTOR

CENTRAL BANK OF LIBERIA

2.4b: Key Output Value - 2011 (continued)

Liberian dollars

Commodity	Unit	Jul-11	Aug-11	Sep-11	Oct-11	Nov-11	Dec-11	Jul-Dec Total	Grand Total
Agriculture									
Rubber ^{3*}	Mt.	22,167,717.00	2,362,569,402.00	157,407,583.00	2,606,476,023.00	107,693,632.00	1,314,658,280.00	6,570,972,637.00	14,132,401,077.70
Cocoa Beans ⁴	Mt.	184,831,500.00	152,814,825.00	362,922,800.00	194,640,825.00	182,580,000.00	11,031,724,275.00	12,109,514,225.00	14,886,780,338.00
Coffee ⁴	Mt.	na	3,915,540.00	na	na	na	na	na	na
Round Logs ³	M ³	30,890,447	16,837,343	480,269	4,474,359.00	11,080,608.00	4,568,490.00	68,331,516.00	99,759,320.02
Sawn Timber ⁴	Pcs.	1,296,188	937,076	536,794,176	397,305.84	462,822.40	375,474.60	540,263,042.37	549,372,588.37
Fish ⁴	Kg.	-	-	-	-	-	-	-	-
Mining⁴									
Gold	Ounces	84,632,239.00	125,316,738.00	101,456,129.00	40,617,896.00	114,004,594.00	111,919,850.00	577,947,446.00	1,241,701,524.98
Diamond	Carat	121,113,483.00	101,656,244.00	58,956,492.00	73,614,279.00	15,606,057.00	27,872,640.00	398,819,195.00	1,114,328,085.92
Iron Ore	Mt.	-	-	-	222,817,298.00	547,158,608.00	428,241,009.00	1,198,216,915.00	1,198,216,915.00
Manufacturing⁴									
Cement	Mt.	89,827,308.00	115,034,360.00	76,733,341.00	79,644,929.00	122,489,248.00	138,141,838.00	621,871,024.00	966,110,867.28
Spirit	Litre	3,645,100.00	3,699,850.00	3,733,000.00	3,925,950.00	3,672,100.00	4,384,550.00	23,060,550.00	55,073,025.00
Beer	Litre	120,269,310.00	114,823,415.00	85,820,350.00	91,705,850.00	90,237,940.00	130,473,655.00	633,330,520.00	1,269,163,655.00
Stout	Litre	93,904,080.00	93,920,800.00	78,777,040.00	81,020,560.00	96,846,800.00	115,033,600.00	559,502,880.00	1,028,264,800.00
Malta	Litre	-	26,569,485.00	7,390,935.00	4,263,165.00	8,821,305.00	8,665,020.00	55,709,910.00	120,673,755.00
Soft Drink	Litre	55,982,720.00	4,988,360.00	47,782,460.00	58,727,865.00	71,940,975.00	114,346,860.00	353,769,240.00	793,915,120.00
Oil Paint	Gal.	3,445,332.00	1,196,415.00	2,077,346.00	1,709,659.00	3,831,674.00	3,623,833.00	15,884,259.00	32,365,113.00
Water Paint	Gal.	10,693,640.00	9,529,083.00	7,210,162.00	9,278,060.00	11,296,690.00	14,954,751.00	62,962,386.00	113,316,056.80
Varnish	Gal.	861,333.00	299,104.00	519,336.00	427,415.00	957,919.00	905,958.00	3,971,065.00	8,091,277.75
Manoline Hair Greas	Kg.	432,669.60	378,067.14	356,796.00	262,412.70	567,072.00	451,001.10	2,448,018.54	62,192,698.92
Thinner	Gal.	1,141,767.00	685,945.00	392,476.00	1,709,659.00	3,831,674.00	3,623,833.00	11,385,354.00	23,973,780.00
Rubbing Alcohol	Litre	177,365.00	155,897.00	390,097.00	216,870.00	329,360.00	-	1,269,589.00	4,127,346.28
Soap	Kg.	5,734,693.00	3,682,602.00	3,711,147.00	1,645,754.00	2,314,470.00	2,807,068.00	19,895,734.00	42,536,038.01
Chlorox	Litre	1,857,602.00	1,827,252.00	1,772,808.00	1,977,056.00	869,582.00	691,607.00	8,995,907.00	24,595,175.11
Nail	Kg.	-	-	-	-	-	-	-	-
Candle	Kg.	6,923,442.00	6,791,287.00	4,048,013.00	6,988,737.00	6,210,613.00	5,831,005.00	36,793,097.00	85,525,883.06
Mattresses	Pcs.	33,035,646.00	23,710,416.00	31,075,742.00	39,099,391.00	31,228,107.00	49,327,914.00	207,477,216.00	385,786,247.93
Finished Water ²	Gal.	-	-	-	-	-	-	-	162,449,704.89

1. Water from White Plains Treatment Plant.
2. Represents Export values
3. Represents quantity sold, not quantity produced

Sources : Lands, Mines & Energy; Commerce & Industry; Forestry Development Authority (FDA);
Liberia Produce Marketing Corporation (LPMC) and Liberia Water & Sewer Corporation (LWSC), Monrovia, Liberia

REAL SECTOR

CENTRAL BANK OF LIBERIA

2.4c: Key Output Value - 2012

Liberian dollars

Commodity	Unit	Jan-Jun Total	Jul-12	Aug-12
Agriculture				
Rubber ³	Mt.	6,029,057,018.00	90,331,605.00	64,355,193.00
Cocoa Beans ⁴	Mt.	774,012,964.00	13,693,680.00	20,983,229.31
Coffee ⁴	Mt.	6,054,571.00	-	-
Round Logs ³	M ³	169,446,986.00	na	na
Sawn Timber ⁴	Pcs.	6,348,519.00	na	na
Fish ⁴	Kg.	-	-	-
Mining⁴				
Gold	Ounces	948,314,108.48	193,541,705.53	102,320,507.68
Diamond	Carat	496,289,586.00	107,334,851.83	50,653,347.01
Iron Ore	Mt.	6,005,352,072.00	932,430,681.00	1,142,396,905.70
Manufacturing⁴				
Cement	Mt.	887,902,882.72	112,479,354.00	92,373,843.42
Spirit	Litre	22,718,050.00	4,103,650.00	3,441,300.00
Beer	Litre	637,774,860.00	128,266,225.00	81,880,330.00
Stout	Litre	471,453,580.00	107,795,420.00	73,511,440.00
Malta	Litre	52,157,540.00	9,800,725.00	7,601,095.00
Soft Drink	Litre	484,754,805.00	65,048,140.00	48,490,570.00
Oil Paint	Gal.	19,338,391.05	3,844,011.60	4,781,626.85
Water Paint	Gal.	62,998,496.22	10,247,125.98	11,507,409.60
Varnish	Gal.	4,834,597.76	961,002.90	1,195,406.71
Manoline Hair Grease	Kg.	4,143,196.34	783,311.10	756,359.08
Thinner	Gal.	6,762,183.12	1,300,899.600	1,489,054.38
Rubbing Alcohol	Litre	1,654,927.37	594,096.75	511,343.42
Soap	Kg.	16,853,557.90	2,647,689.33	2,808,236.63
Chlorox	Litre	11,652,073.49	2,137,785.00	1,896,042.00
Nail	Kg.	-	-	-
Candle	Kg.	32,591,532.00	8,071,713.00	6,613,512.08
Mattresses	Pcs.	194,950,292.47	25,763,488.88	23,493,971.07
Finished Water ^{2*}	Gal.	169,821,568.00	na	na

1. Water from White Plains Treatment Plant.
2. Represents Export values
3. Represents quantity sold, not quantity produced

* Estimates

Sources : Lands, Mines & Energy; Commerce & Industry; Forestry Development Authority (FDA);
Liberia Produce Marketing Corporation (LPMC) and Liberia Water & Sewer Corporation (LWSC), Monrovia, Liberia

GOVERNMENT FINANCE

CENTRAL BANK OF LIBERIA

3.1: Government Revenue 2012

Millions of Liberian Dollars

REVENUE SOURCES	May-Jun	Jul-Aug
A. Tax Revenue		
International Trade Taxes	2,187.12	1,904.70
<i>Taxes & Duties on Imports</i>	2,136.89	1,900.90
<i>Taxes on Exports</i>	50.23	3.80
Taxes on Income & Profits	2,126.38	1,750.40
<i>Individual Taxes on income & profits</i>	694.75	-
<i>Taxes Payable by Corporate Entities</i>	1,430.19	-
<i>Others</i>	1.44	-
Sale Taxes on Goods & Services	1,017.44	667.40
<i>Goods & Service Tax</i>	304.70	429.20
<i>Excise Taxes</i>	150.91	25.00
<i>Maritime Revenue</i>	325.52	213.30
<i>Others</i>	236.30	-
Property & Real Estate Taxes	39.18	56.80
Other Tax Revenue ¹	226.71	209.20
	-	-
B. Non-Tax Revenue	624.40	167.10
Charges & Other Administrative Fees	115.52	-
Grants	115.90	-
Others	392.98	167.10
<i>Contingent Revenue</i>	-	-
<i>Borrowing</i>	-	-
<i>Revenue Carry Forward</i>	-	-
Grand Total Revenue (A + B)	6,221.22	4,755.60

3.2: Government Expenditure 2012

Millions of Liberian Dollars

Expenditure By Sectors	May-Jun	Jul-Aug*
Public & Administrative Services	2,341.42	1,974.16
Rule of Law & Public Safety	920.40	997.38
Social & Community Services	1,882.07	1,583.74
Economic Services	1,713.30	1,391.04
Total	6,857.19	5,946.32

*Preliminary

Sources : Central Bank of Liberia and Ministry of Finance, Monrovia, Liberia

GOVERNMENT FINANCE

CENTRAL BANK OF LIBERIA

**3.2: Summary Estimates of Liberia's Public Debt Profile and Status
as at End August, 2012**

(In Millions US\$)

External Debt	Current	Percentage Distribution
Multilateral	143.8	
Bilateral	134.5	
O/W	0	
Paris Club	0	
Non-Paris Club	0	
Commercial Creditors	0	
Total External Debt	278.3	49.6
Suppliers' Credit	1.9	
Salary & Allowances	3.7	
Financial Institutions	275	
Pre NTGL Salary Arrears	1.3	
Others	1.2	
Total Domestic Debt	283.1	50.4
Total Stock of Public Debt	561.4	100.0

Source : Ministry of Finance, Monrovia, Liberia

EXTERNAL TRADE

CENTRAL BANK OF LIBERIA

4.1: Exports and Imports 2010- 2012*(Millions of United States Dollars)*

Period	2010		2011		2012		Balance of Trade		
	Exports	Imports	Exports	Imports	Exports	Imports	2010	2011	2012
Jan	19.3	23.5	25.2	30.0	41.0	70.0	(4.2)	(4.80)	(29.0)
Feb	13.5	25.4	31.7	53.4	36.1	56.0	(11.9)	(21.70)	(19.9)
Mar	11.4	34.2	13.4	88.3	83.5	70.7	(22.8)	(74.90)	12.8
Apr	16.9	71.0	43.3	73.0	34.6	87.6	(54.1)	(29.70)	(53.0)
May	20.8	88.9	30.9	83.2	24.7	109.0	(68.1)	(52.30)	(84.3)
Jun	12.1	90.1	16.4	91.9	48.0	119.4	(78.0)	(75.50)	(71.4)
Jul	23.4	60.6	33.3	110.9	31.0	91.5	(37.2)	(77.60)	(60.5)
Aug	19.8	63.4	39.9	97.6	36.8	78.4	(43.6)	(57.70)	(41.6)
Sep	19.6	64.9	10.8	72.1			(45.3)	(61.30)	-
Oct	20.8	76.2	45.8	104.6*			(55.4)	(58.80)	-
Nov	20.5	48.2	32.2	102.5			(27.7)	(70.34)	-
Dec	23.9	63.3	29.0	110.1			(39.4)	(81.12)	-
Total	222.0	709.7	351.9	913.1			(487.7)	(665.8)	

4.2a: Commodity Composition of Exports-2010*(Thousands of United States Dollars)*

Commodity	Jan	Feb	Mar	Apr	May	Jun	Jan-Jun Total
Rubber	14,410.6	10,679.5	7,174.6	4,157.8	17,249.0	8,818.0	62,489.5
Cocoa beans	692.3	24.0	648.3	614.4	0.0	62.0	2,041.0
Coffee	0.0	0.0	0.0	250.0	0.0	13.6	263.6
Round Logs	0.0	23.0	0.0	506.6	0.0	773.2	1,302.8
Iron Ore	0.0	0.0	600.0	600.0	450.0	0.0	1,650.0
Diamond	1,532.6	1,443.4	1,618.8	2,295.0	1,888.1	1,488.4	10,266.3
Gold	527.8	626.5	406.7	7,577.8	398.4	674.2	10,211.4
Other Commodities	2,166.1	671.6	908.7	873.6	772.3	253.2	5,645.6
Total	19,329.4	13,468.1	11,357.1	16,875.2	20,757.8	12,082.6	93,870.2

Commodity	Jul	Aug	Sep	Oct	Nov	Dec	Jul-Dec Total	Grand Total
Rubber	13,653.0	12,972.7	16,250.2	16,777.6	17,172.3	17,632.1	94,457.9	156,947.4
Cocoa beans	648.30	90.00	17.60	690.30	679.10	845.80	2,971.1	5,012.1
Coffee	0.00	-	0.00	0.00	0.00	0.00	0.0	263.6
Round Logs	25.029	927.03	29.38	0.00	441.85	0.00	1,423.3	2,726.1
Iron Ore	-	540.00	0.00	0.00	450.00	450.00	1,440.0	3,090.0
Diamond	529.00	214.64	928.86	1394.29	161.46	1816.53	5,044.8	15,311.1
Gold	868.27	2,014.86	2172.02	1397.94	1188.27	1932.37	9,573.7	19,785.2
Other Commodities	7,694.83	2,986.60	249.81	529.98	393.72	1256.50	13,111.4	18,757.0
Total	23,418.42	19,745.83	19,647.85	20,790.13	20,486.7	23,933.3	128,022.3	221,892.4

Source: Ministry of Commerce & Industry and Ministry of Lands, Mines and Energy, Monrovia, Liberia

EXTERNAL TRADE

CENTRAL BANK OF LIBERIA

4.2b: Commodity Composition of Exports-2011

(Thousands of United States Dollars)

Commodity	Jan	Feb	Mar	Apr	May	Jun	Jan-Jun Total
Rubber	14,691.2	26,233.82	855.54	37,812.42	24,436.49	1,042.52	105,071.98
Cocoa beans	1,514.1	692.30	1,862.85	1,712.30	1,512.80	1,100.93	8,395.28
Coffee	0.0	-	-	-	100.00	-	100.00
Round Logs	3,106.0	563.20	5,402.44	843.98	560.21	4,003.06	14,478.89
Iron Ore	0.0	-	450.00	-	-	5,054.45	5,504.45
Gold	1,226.4	1,167.39	1,346.74	1,773.76	1,822.04	1,845.39	9,181.68
Diamond	3,427.1	811.68	1,505.06	197.10	1,483.26	2,457.08	9,881.26
Other Commodities	1,284.8	2,213.79	1,956.73	944.63	1,014.96	933.78	8,348.65
Total	25,249.5	31,682.18	13,379.36	43,284.19	30,929.76	16,437.21	160,962.19

Commodity	Jul	Aug	Sep	Oct	Nov	Dec	Jul-Dec Total	Grand Total
Rubber	30,426.5	32,582.67	2,183.8	36,055.83	1,504.1	18,276.91	121,029.82	226,101.80
Cocoa beans	1,534.4	1,628.60	827.3	825.90	204.0	917.80	5,937.95	14,333.23
Coffee	-	-	-	-	-	-	-	100.00
Round Logs	238.5	1,684.22	2,255.8	239.06	2,420.3	-	6,837.78	21,316.67
Iron Ore	-	0.00	-	3,082.27	7,641.88	5,953.58	16,677.73	22,182.18
Diamond	1,161.89	1,728.27	1,407.55	1,018.32	1,555.96	1,592.24	8,464.23	17,645.91
Gold	1,662.7	1,401.96	817.9	561.87	218.0	387.50	5,049.95	14,931.21
Other Commodities	1,128.7	4,045.29	3,323.7	4,041.85	18,691.7	1,879.94	33,111.11	41,459.76
Total	36,152.6	43,071.0	10,816.0	45,825.1	32,235.9	29,008.0	197,108.57	358,070.76

4.2c: Commodity Composition of Exports-2012

(Thousands of United States Dollars)

Commodity	Jan	Feb	Mar	Apr	May	Jun	Jan-Jun Total
Rubber	18,606.1	6,705.1	35,245.0	510.22	1,355.8	37,952.19	100,374.44
Cocoa beans	1,662.1	112.0	798.4	720.30	108.0	614.07	4,014.90
Coffee	-	-	52.50	30.00	-	-	82.50
Round Logs	4,576.8	3,782.7	852.3	7,482.24	4,508.7	3,854.59	25,057.33
Iron Ore	5,955.6	18,878.8	24,200.7	21,508.87	10,821.4	-	81,365.28
Gold	2,031.4	1,927.8	2,054.7	2,650.62	1,388.6	2,786.57	12,839.67
Diamond	1,339.6	1,242.0	1,382.2	628.49	1,651.8	468.16	6,712.24
Other Commodities	6,744.4	3,283.1	18,927.7	1,104.38	4,909.9	2,329.96	37,299.45
Total	40,915.9	35,931.5	83,513.6	34,635.1	24,744.2	48,005.5	267,745.81

Commodity	Jul	Aug
Rubber	1,219.1	875.7
Cocoa beans	0.0	81.3
Coffee	-	-
Round Logs	8,387.9	63.9
Iron Ore	12,583.4	15,544.9
Gold	2,611.9	1,392.3
Diamond	1,448.5	689.3
Other Commodities	4,778.4	18,113.5
Total	31,029.2	36,760.9

Source: Ministry of Commerce & Industry and Ministry of Lands, Mines and Energy, Monrovia, Liberia

EXTERNAL TRADE

CENTRAL BANK OF LIBERIA

4.3a: Commodity Composition of Imports - 2010

Thousands of United States Dollars

Commodity	Jan	Feb	Mar	Apr	May	Jun	Jan-Jun Total
Food and Live Animals	7,488.2	7,013.2	13,419.18	10,537.53	20,148.72	14,442.33	73,049.13
O/w Commercial Rice	1,065.3	1,853.2	5,099.00	4,291.16	3,146.57	84.24	15,539.54
O/w Non-Commercial Rice	1,288.1	524.3	529.36	218.46	1,164.00	-	3,724.22
Beverage and Tobacco	1,454.0	1,053.7	2,030.37	2,457.08	2,075.27	1,616.31	10,686.78
Crude Materials	237.9	384.9	565.52	516.34	428.32	964.32	3,097.27
Mineral, Fuels, Lubricants	-	398.4	1,186.26	599.68	14,000.75	39,100.78	55,285.84
Animal and Vegetable Oil	-	223.4	360.68	3,763.48	710.30	73.87	5,131.74
Chemicals and Related Products	2,258.9	2,830.3	1,558.52	2,650.80	3,433.41	2,564.84	15,296.81
Manufactured Products	3,558.3	833.6	3,328.57	9,496.20	6,950.22	3,586.99	27,753.91
Machinery & Transport Equipment	7,446.0	9,884.4	6,194.68	9,137.34	21,096.81	928.69	54,687.86
Petroleum Products	-	1,162.5	3,340.84	30,878.38	16,641.44	23,776.14	75,799.30
Miscellaneous Articles ¹	1,061.5	1,634.9	2,203.23	947.89	3,446.21	3,074.31	12,368.03
Total	23,504.8	25,419.3	34,187.9	70,984.7	88,931.4	90,128.6	333,156.6

Commodity	Jul	Aug	Sep	Oct	Nov	Dec	Jul-Dec Total	Grand Total
Food and Live Animals	18,027.94	19,655.84	31,122.06	24,178.30	11,212.95	8,113.01	112,310.09	185,359.22
O/w Commercial Rice	10,042.59	9,248.40	5,851.20	6,012.42	10.61	587.79	31,753.01	47,292.54
O/w Non-Commercial Rice	502.76	946.66	30.01	-	218.39	-	1,697.83	5,422.05
Beverage and Tobacco	1,439.36	1,487.26	1,078.68	540.65	1,321.58	1,054.94	6,922.47	17,609.24
Crude Materials	646.45	353.59	408.61	310.70	781.87	440.98	2,942.20	6,039.47
Mineral, Fuels, Lubricants	1,583.87	606.01	658.60	1,008.04	566.29	4,818.06	9,240.87	64,526.71
Animal and Vegetable Oil	288.48	252.45	982.87	209.12	3,616.02	1,054.88	6,403.82	11,535.56
Chemicals and Related Products	2,540.62	3,608.06	2,648.26	2,767.85	2,353.13	2,558.92	16,476.84	31,773.65
Manufactured Products	10,584.59	8,908.42	5,880.69	7,276.81	3,604.75	6,702.09	42,957.35	70,711.26
Machinery & Transport Equipment	14,107.93	10,544.51	15,134.97	10,155.12	9,701.87	12,401.37	72,045.77	126,733.63
Petroleum Products	6,176.90	12,731.31	778.78	26,428.54	8,172.83	20,647.74	74,936.11	150,735.40
Miscellaneous Articles ¹	5,211.76	5,225.52	6,169.28	3,349.20	6,905.53	5,536.54	32,397.83	44,765.86
Total	60,607.9	63,373.0	64,862.80	76,224.3	48,236.82	63,328.53	376,633.35	709,789.99

Sources: Ministry of Commerce & Industry and Ministry of Finance, Monrovia, Liberia.

EXTERNAL TRADE

4.3b: Commodity Composition of Imports - 2011
Thousands of United States Dollars

CENTRAL BANK OF LIBERIA

Commodity	2011								Jan-Jun Total
	Jan	Feb	Mar	Apr	May	Jun			
Food and Live Animals	7,185.99	26,009.04	37,988.98	17,443.76	23,913.05	11,468.15			124,008.97
O/w Commercial Rice	180.22	15,510.49	3,411.43	12,112.84	13,774.77	897.42			45,887.17
O/w Non-Commercial Rice	209.92	1,479.36	2.77	3.18	168.39	858.58			2,722.20
Beverage and Tobacco	854.02	1,895.26	1,443.04	751.94	1,262.57	1,723.57			7,928.40
Crude Materials	458.02	230.49	484.32	310.97	550.12	407.64			2,441.56
Mineral, Fuels, Lubricants	1,497.45	835.60	5,388.30	358.83	27,162.86	494.68			35,737.73
Animal and Vegetable Oil	314.66	710.49	57.78	66.57	49.77	469.76			2,149.91
Chemicals and Related Products	2,207.81	3,255.05	1,102.49	2,303.96	4,807.43	4,198.33			17,875.07
Manufactured Products	5,321.05	5,966.53	6,929.35	10,844.53	8,040.81	5,819.29			42,921.56
Machinery & Transport Equipment	6,911.49	5,931.02	11,318.43	27,850.18	14,425.47	19,919.55			86,356.14
Petroleum Products	2,015.27	16,963.77	6,471.25	11,482.88	26,529.40	38,816.22			102,278.79
Miscellaneous Articles ¹	3,260.92	2,081.35	6,664.52	1,619.32	2,548.17	8,622.09			24,796.38
Total	30,026.68	53,384.08	88,340.99	73,032.95	109,770.53	91,939.28			446,494.50

Commodity								Jul-Dec Total	Grand Total
	Jul	Aug	Sep	Oct	Nov	Dec			
Food and Live Animals	27,005.41	24,984.34	31,462.00	42,966.26	28,970.89	26,745.82		182,134.72	306,143.69
O/w Commercial Rice	7,969.99	12,218.34	7,330.15	27,746.91	14,245.91	3,187.48		72,698.78	118,585.95
O/w Non-Commercial Rice	-	5.23	-	1.11	469.71	17.05		493.10	3,215.30
Beverage and Tobacco	2,373.99	2,415.04	2,539.57	2,751.71	776.09	1,659.42		12,515.82	20,444.22
Crude Materials	403.08	511.40	934.99	347.07	483.30	306.08		2,985.92	5,427.48
Mineral, Fuels, Lubricants	6,597.11	8,945.42	1,091.51	721.50	2,260.00	6,685.27		26,300.81	62,038.54
Animal and Vegetable Oil	1,322.06	1,320.55	20.99	227.35	673.05	5,801.90		9,365.90	11,515.81
Chemicals and Related Products	2,965.08	3,401.08	4,009.14	3,326.19	1,861.80	2,005.74		17,569.03	35,444.10
Manufactured Products	11,447.14	8,786.35	9,835.74	10,919.25	4,405.53	5,771.09		51,165.10	94,086.66
Machinery & Transport Equipment	31,764.45	29,045.14	6,931.20	28,795.95	29,584.91	38,119.09		164,240.74	250,596.88
Petroleum Products	23,589.03	16,046.61	12,930.03	11,029.09	29,870.51	21,393.46		114,858.73	217,137.52
Miscellaneous Articles ¹	3,479.28	2,128.50	2,300.66	3,464.27	3,652.36	1,627.67		16,652.74	41,449.12
Total	110,946.63	97,584.43	72,055.83	104,548.64	102,538.44	110,115.54		597,789.51	1,044,284.01

4.3c: Commodity Composition of Imports -2012

Commodity	2012								Jan-Jun Total
	Jan	Feb	Mar	Apr	May	Jun			
Food and Live Animals	11,161.11	11,322.30	18,199.64	11,465.93	12,349.19	11,183.50			75,681.67
O/w Commercial Rice	8,495.91	1,328.25	5,002.55	2,428.73	9,303.83	275.37			26,834.64
O/w Non-Commercial Rice	10.84	11.15	-	-	-	-			21.99
Beverage and Tobacco	1,067.23	1,699.04	885.52	1,952.21	2,105.47	2,399.31			10,108.78
Crude Materials	454.32	365.41	192.69	192.69	605.24	724.29			3,105.20
Mineral, Fuels, Lubricants	730.14	630.24	2,480.78	2,516.43	1,063.64	7,819.45			15,240.68
Animal and Vegetable Oil	297.67	286.52	621.82	657.27	6,450.13	7,419.08			15,732.49
Chemicals and Related Products	4,431.81	2,199.62	6,855.67	3,563.24	3,965.37	7,420.47			28,436.18
Manufactured Products	7,382.42	6,967.32	8,949.99	7,090.50	19,548.87	20,606.12			70,545.22
Machinery & Transport Equipment	11,422.18	18,065.89	12,513.86	33,374.74	26,170.71	23,775.07			125,322.45
Petroleum Products	30,329.00	12,701.67	15,196.81	24,449.34	33,838.43	33,648.01			150,163.26
Miscellaneous Articles ¹	2,704.22	1,734.71	4,209.71	2,368.59	2,454.16	4,407.72			17,879.11
Total	69,980.10	55,972.72	70,677.05	87,630.95	108,551.21	119,403.02			512,215.04

Commodity	Jul	Aug
	Food and Live Animals	13,330.45
O/w Commercial Rice	4,796.24	4,437.81
O/w Non-Commercial Rice	0.78	19.91
Beverage and Tobacco	2,228.21	3,726.59
Crude Materials	942.01	475.27
Mineral, Fuels, Lubricants	8,205.64	5,222.49
Animal and Vegetable Oil	60.30	803.99
Chemicals and Related Products	5,982.63	3,088.59
Manufactured Products	9,858.46	11,106.50
Machinery & Transport Equipment	23,430.80	31,563.02
Petroleum Products	25,570.97	11,124.51
Miscellaneous Articles ¹	1,841.40	1,528.03
Total	30,133.99	37,957.88

Sources: Ministry of Commerce & Industry and Ministry of Finance, Monrovia, Liberia.

EXTERNAL TRADE

CENTRAL BANK OF LIBERIA

4.4: Volume of Imports of Petroleum Products-2010- 2012
(Volume in gals.)

2010	Premium	Diesel	Kerosene	Jet fuel	Total
Jan	2,416,100	971,655	0	96,000	3,483,755
Feb	555,000	0	0	0	555,000
March	0	1,535,000	0	0	1,535,000
April	3,761,420	7,936,257	0	1,659,840	13,357,517
May	2,405,000	3,591,900	0	0	5,996,900
June	4,876,600	4,218,861	0	480,000	9,575,461
Jul	1,646,130	765,658	0	477,120	2,888,908
Aug	1,558,810	4,127,615	0	0	5,686,425
Sep	481,000	185,000	0	0	666,000
Oct	4,187,660	7,648,270	0	1,613,570	13,449,500
Nov	1,827,374	2,031,526	0	0	3,858,900
Dec	4,115,878	4,709,889	0	831,760	9,657,527
Total	27,830,972	37,721,632	0	5,158,290	70,710,893

2011	Premium	Diesel	Kerosene	Jet fuel	Total
Jan	-	738,076	-	-	738,076
Feb	1,480,000	1,110,000	-	-	2,590,000
Mar	2,670,593	3,168,005	-	1,097,681.22	6,936,279
Apr	4,182,856.29	-	-	-	4,182,856.29
May	4,709,021.08	5,578,676.11	-	1,294,841.64	11,582,538.83
June	7,978,638.56	4,645,656.73	-	727,492.52	13,351,787.81
Jul	2,669,547.41	5,430,753.81	-	-	8,100,301.22
Aug	1,681,442.80	3,705,720.20	-	435,926.60	5,823,089.60
Sep	-	4,267,713.20	-	405,520.00	4,673,233.20
Oct	2,093,830.00	603,793,751.84	-	138,857,417.60	744,744,999.44
Nov	5,253,796.50	5,055,657.80	-	398,334.60	10,707,788.90
Dec	1,280,967.38	24,809,573.00	-	797,453.60	26,887,993.98
Total	34,000,693	662,303,583	0	144,014,668	840,318,944

2012	Premium	Diesel	Kerosene	Jet fuel	Total
Jan	4,197,923.80	5,832,689.93	-	-	10,030,614
Feb	2,873,980.92	623,194.65	-	811,920.60	4,309,096
Mar	-	4,141,208.96	-	4,225,444.40	8,366,653
Apr	2,608,858.90	4,671,053.51	-	-	7,279,912
May	6,437,519.00	3,249,521.32	-	413,767.30	10,100,808
Jun	3,678,517.80	5,827,876.17	-	1,151,932.10	10,658,326
Jul	3,373,312.20	5,907,152.78	-	401,816.30	9,682,281
Aug	1,848,094.50	1,381,364.92	-	414,337.10	3,643,797
Total	25,018,207.12	31,634,062.24	-	7,419,217.80	64,071,487.16

Source: Ministry of Commerce & Industry and Central Bank of Liberia