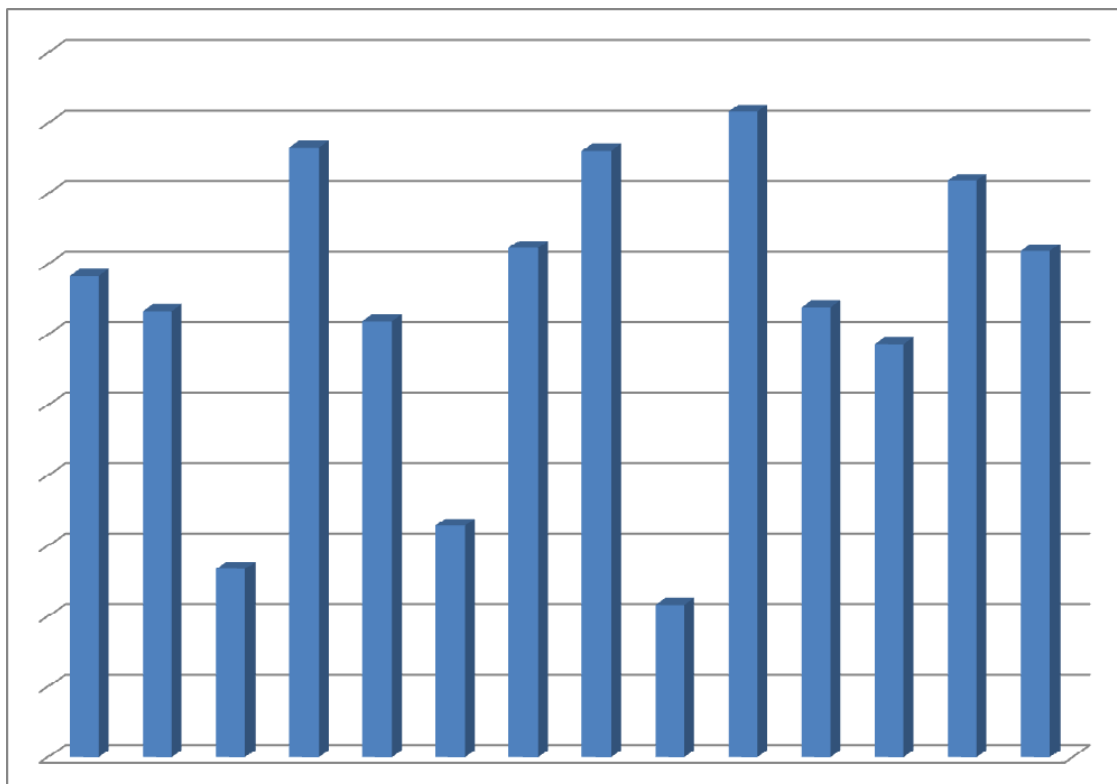




## ***CENTRAL BANK OF LIBERIA***



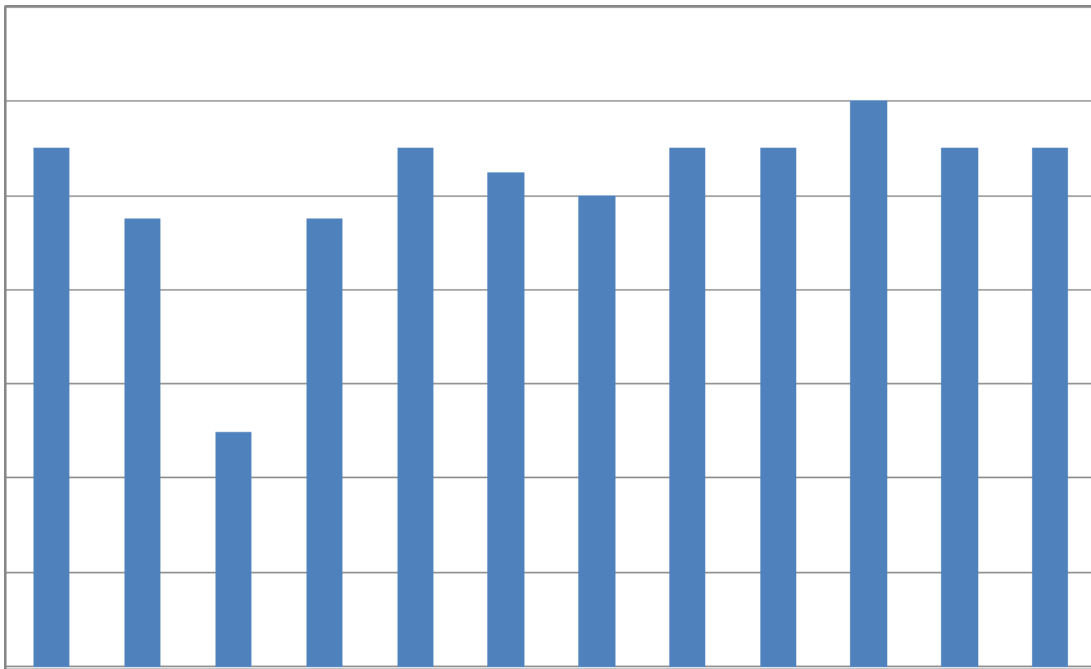
# **Liberia Financial STATISTICS**

**Vol. 14, No.2  
Mar-Apr, 2012**

Research, Policy and Planning Department  
Monrovia, Liberia



# ***CENTRAL BANK OF LIBERIA***



# **Liberia Financial STATISTICS**

---

**THE LIBERIA FINANCIAL STATISTICS (LFS) is produced by the Bank's Research, Policy and Planning Department. Inquiries concerning this publication should be addressed to:**

**The Director  
Research, Policy and Planning Department  
Central Bank of Liberia  
Warren and Carey Streets  
P. O. Box 2048  
Monrovia, Liberia**

**Telephone #s: 00(231)886516006/886449833**

**Fax #s: 00(231) 077059642**

**Swift :CBLRRLM**

---

# Table of Contents

<i>INTRODUCTION</i> .....	-ii-
<i>Statistics</i> .....	<i>I - 53</i>
<b>1 MONEY AND BANKING</b> .....	<b>1 – 30</b>
1.1a Depository Corporations Survey – 2010.....	1-2
1.1b Depository Corporations Survey –2011.....	3-4
1.1c Depository Corporations Survey -2012.....	5
1.2a Sectoral Balance Sheet of Other Depository Corp. –2010.....	6-7
1.2b Sectoral Balance Sheet of Other Depository Corp. –2011.....	8-9
1.2c Sectoral Balance Sheet of Other Depository Corp. -2012.....	10
1.3a Sectoral Balance Sheet of Central Bank of Liberia – 2010.....	11-12
1.3b Sectoral Balance Sheet of Central Bank of Liberia – 2011.....	13-14
1.3c Sectoral Balance Sheet of Central Bank of Liberia – 2012.....	15
1.4a Commercial Banks’ Loans by Economic Sectors – 2010.....	16-17
1.4b Commercial Banks’ Loans by Economic Sectors – 2011-2012.....	18-19
1.4c Commercial Banks’ Loans by Economic Sectors -2012.....	20
1.5 Commercial Banks’ Interest Rate – 2010-2012.....	21
1.6 Liberian Dollar Exchange Rates – Period Averages – 2010-2012.....	22
1.7 Liberian Dollar Exchange Rates –End of Period – 2010-2012.....	23
1.8 Liberian Dollar Exchange Rates – Jan-Feb, 2012.....	24
1.9 Commercial Banks’ Inflows and Outflows – 2010-2012.....	25
1.10a Central Bank of Liberia FX Auction – 2010.....	26-27
1.10b Central Bank of Liberia FX Auction – 2011.....	28-29
1.10c Central Bank of Liberia FX Auction – 2012.....	30
<b>2 REAL SECTOR</b> .....	<b>31-46</b>
2.1a Harmonized Consumer Price Index – 2010.....	31
2.1b Harmonized Consumer Price Index – 2011.....	32
2.1c Harmonized Consumer Price Index – 2012.....	33
2.2a HCPI Inflation Rates – 2010.....	34
2.2b HCPI Inflation Rates – 2011.....	35
2.2c HCPI Inflation Rates – 2012.....	36
2.3a Key Output Volume – 2010.....	37-38
2.3b Key Output Volume – 2011.....	39-40
2.3c Key Output Volume –2012.....	41
2.4a Key Output Value – 2010.....	42-43
2.4b Key Output Value – 2011.....	44-45
2.4c Key Output Value –2012.....	46
<b>3 GOVERNMENT FINANCE</b> .....	<b>47-48</b>
3.1 Government Revenue & Expenditure– 2012.....	47
3.2 Summary Estimates of Liberia’s Public Debt Stock and Status as at Feb. 29, 2012.....	48
<b>4 EXTERNAL TRADE</b> .....	<b>49-53</b>
4.1 Exports and Imports – 2010-2012.....	49
4.2a Commodity Composition of Exports – 2010.....	49
4.2b Commodity Composition of Exports – 2011.....	50
4.2c Commodity Composition of Exports – 2012.....	50
4.3a Commodity Composition of Imports – 2010.....	51
4.3b Commodity Composition of Imports – 2011.....	52
4.3c Commodity Composition of Imports –2012.....	52
4.4 Volume of Imports of Petroleum Products – 2010-2012.....	53

# Introduction

The Liberia Financial Statistics (LFS) is one of the major sources of statistical information on the Liberian economy. It continues to provide appropriate and valuable information to its readers, both in the public and private sectors who are interested in making business and economic decisions based on statistical data.

This is the Second Edition in 2012, and its data coverage spans from January, 2010 to April, 2012. It includes data compiled from the four (4) major sectors of the Liberian economy, which include: monetary, real, fiscal and external. The cover page of this edition depicts Liberia's inflation rate trend from May, 2011 to April, 2012.

The management of the Central Bank of Liberia (CBL) remains very grateful to all of its many data providers for their collaboration and cooperation, which have immensely contributed to the timely publication of this document. It is the hope of the CBL management that this excellent relationship will continue to nurture as we strive together in building a strong statistical database for our country.

## MONEY AND BANKING

## 1.1a: Depository Corporations Survey- 2010

Millions of Liberian Dollars

	Jan-10	Feb-10	March-10	April-10	May-10	June-10
<b>Foreign Assets (net)</b>	<b>(45,592.3)</b>	<b>(44,775.8)</b>	<b>(43,989.7)</b>	<b>(42,834.8)</b>	<b>(41,233.1)</b>	<b>17,674.3</b>
Foreign Assets (MA)	28,454.6	28,779.7	27,656.5	27,818.5	27,213.4	28,444.1
(-) Foreign Liabilities (MA)	80,083.7	79,526.2	77,700.5	77,338.6	75,468.9	17,884.4
Foreign Assets (CoB)	6,813.0	6,920.9	6,901.6	7,633.1	7,798.5	8,067.3
(-) Foreign Liabilities (CoB)	776.2	950.2	847.3	947.7	776.2	952.7
<b>Domestic Credit</b>	<b>86,066.5</b>	<b>86,281.4</b>	<b>84,423.5</b>	<b>84,198.1</b>	<b>82,863.3</b>	<b>25,418.0</b>
Claims on General Government (net)	75,026.2	74,957.8	73,569.2	73,189.2	71,798.0	13,887.2
Claims on General Government (MA)	79,610.6	79,306.3	77,668.4	77,391.9	75,963.7	18,906.9
(-) General Government Deposits (MA)	4,899.1	4,676.4	4,447.6	4,411.1	4,375.7	5,284.4
Claims on General Government (CoB)	507.6	500.3	493.4	482.6	482.6	489.4
(-) General Government Deposits (CoB)	192.9	172.4	145.0	274.3	272.6	224.7
Claims on Public Corporations (MA)	0.0	0.0	0.0	0.0	0.0	0.0
Claims on Public Corporations (CoB)	1,565.7	1,566.4	1,679.5	1,942.2	1,873.9	2,038.0
Claims on Private Sector (MA)	123.8	126.8	45.7	44.8	45.3	60.8
Claims on Private Sector (CoB)	9,344.5	9,623.2	9,128.1	9,013.0	9,136.1	9,412.4
Claims on NBFIs (MA)	0.0	0.0	0.0	0.0	0.0	0.0
Claims on NBFIs (CoB)	6.3	7.3	1.0	9.0	10.1	19.7
<b>Money</b>	<b>23,576.9</b>	<b>24,212.5</b>	<b>23,691.6</b>	<b>25,594.0</b>	<b>25,513.3</b>	<b>26,270.6</b>
Currency Outside Banks (MA)	3,738.0	3,790.8	3,761.7	3,531.0	3,544.5	3,598.0
Liberian Currency in Circulation (MA)	4,460.0	4,461.6	4,389.4	4,269.0	4,248.8	4,413.1
(-) Currency Holdings (CoB)	721.9	670.8	627.7	738.0	704.3	815.1
<b>Demand Deposits</b>	<b>13,533.3</b>	<b>14,059.4</b>	<b>13,909.9</b>	<b>15,392.7</b>	<b>15,228.9</b>	<b>15,733.9</b>
Demand Deposits (MA)	790.6	798.9	793.9	818.3	811.3	818.4
Demand Deposits (CoB)	12,742.7	13,260.5	13,116.0	14,574.3	14,417.6	14,915.5
<b>Other Deposits</b>	<b>6,305.6</b>	<b>6,362.2</b>	<b>6,020.0</b>	<b>6,670.4</b>	<b>6,739.9</b>	<b>6,938.8</b>
Other Deposits (MA)	97.1	86.3	73.5	96.6	87.9	73.4
Time and Savings Deposits (CoB)	6,208.5	6,276.0	5,946.6	6,573.8	6,652.1	6,865.4
<b>Bonds and Securities (CoB)</b>	<b>0.0</b>	<b>0.0</b>	<b>0.0</b>	<b>0.0</b>	<b>0.0</b>	<b>0.0</b>
<b>Restricted Deposits</b>	<b>55.8</b>	<b>55.8</b>	<b>55.8</b>	<b>55.8</b>	<b>55.4</b>	<b>55.4</b>
<b>Capital Accounts</b>	<b>25,293.4</b>	<b>25,812.4</b>	<b>24,917.5</b>	<b>25,437.3</b>	<b>25,287.2</b>	<b>25,422.4</b>
Capital Accounts (MA)	18,344.4	18,511.3	18,140.2	18,117.3	18,064.4	18,309.2
Capital Accounts (CoB)	6,949.0	7,301.2	6,777.3	7,319.9	7,222.8	7,113.2
<b>Other Items (net)</b>	<b>(8,354.8)</b>	<b>(8,488.9)</b>	<b>(8,157.6)</b>	<b>(9,627.1)</b>	<b>(9,137.8)</b>	<b>(8,582.8)</b>
Unclassified Liabilities (MA)	9,226.2	9,152.5	9,041.3	9,147.9	8,819.9	9,515.0
(-) Unclassified Assets (MA)	14,981.0	14,876.7	14,617.7	14,554.7	14,210.3	14,381.1
(-) Unclassified Assets (CoB)	5,793.9	5,179.4	4,198.2	4,953.8	5,633.7	5,596.0
Unclassified Liabilities (CoB)	4,200.6	3,371.1	2,618.8	1,904.3	3,088.2	3,065.0
Commercial Banks' Deposits (MA)	5,486.6	6,111.6	5,717.0	5,871.9	6,195.9	5,989.1
(-) Reserves (CoB)	6,174.5	6,662.1	6,189.6	6,701.3	6,634.6	6,644.6
Currency Holdings (CoB)	721.9	670.8	627.7	738.0	704.3	815.1
Liabilities to Central Bank (CoB)	0.0	0.0	0.0	0.0	0.0	0.0
(-) Claims on Domestic Banks (MA)	230.2	248.0	327.4	272.9	652.5	502.5
(-) Claims on Central Bank of Liberia (CoB)	901.2	908.9	896.5	896.5	896.5	905.8
(-) Unbalanced Items	90.8	80.2	67.0	89.9	81.6	62.9
<b>Vertical Check</b>	<b>0.0</b>	<b>(0.0)</b>	<b>(0.0)</b>	<b>(0.0)</b>	<b>(0.0)</b>	<b>(0.0)</b>

NBFIs: Non-Bank Financial Institutions

Source : Central Bank of Liberia, Monrovia, Liberia.

**MONEY AND BANKING**
**1.1a: Depository Corporations Survey- 2010 (continued)**
*Millions of Liberian Dollars*

	<b>Jul-10</b>	<b>Aug-10</b>	<b>Sept-10</b>	<b>Oct-10</b>	<b>Nov-10</b>	<b>Dec-10</b>
<b>Foreign Assets (net)</b>	<b>17,132.6</b>	<b>17,503.9</b>	<b>18,450.3</b>	<b>19,664.3</b>	<b>20,307.4</b>	<b>23,629.5</b>
Foreign Assets (MA)	29,033.9	29,801.9	30,353.3	32,542.2	31,812.3	33,388.0
(-) Foreign Liabilities (MA)	18,901.2	18,782.7	19,354.1	19,340.5	18,201.0	19,706.3
Foreign Assets (CoB)	7,888.6	7,345.1	8,225.8	7,393.1	7,542.0	10,957.1
(-) Foreign Liabilities (CoB)	888.6	860.4	774.6	930.4	845.9	1,009.2
<b>Domestic Credit</b>	<b>26,367.9</b>	<b>25,853.8</b>	<b>27,538.8</b>	<b>25,777.3</b>	<b>25,897.7</b>	<b>26,284.9</b>
Claims on General Government (net)	14,310.5	13,439.9	13,984.5	11,923.5	12,067.5	12,013.4
Claims on General Government (MA)	18,969.1	18,969.1	18,969.1	18,782.4	18,222.3	18,720.2
(-) General Government Deposits (MA)	4,960.4	5,553.4	4,974.9	6,848.7	6,094.0	6,519.8
Claims on General Government (CoB)	489.4	489.4	478.5	462.8	448.3	461.2
(-) General Government Deposits (CoB)	187.6	465.2	488.3	473.0	509.0	648.2
Claims on Public Corporations (MA)	0.0	0.0	0.0	0.0	0.0	0.0
Claims on Public Corporations (CoB)	598.1	729.9	739.0	633.9	589.8	500.5
Claims on Private Sector (MA)	163.2	167.7	55.0	57.6	57.5	350.7
Claims on Private Sector (CoB)	11,225.5	11,433.7	12,663.4	13,066.5	13,097.7	13,325.7
Claims on NBFIs (MA)	0.0	0.0	0.0	0.0	0.0	0.0
Claims on NBFIs (CoB)	70.5	82.5	97.0	95.9	85.1	94.7
<b>Money</b>	<b>26,687.2</b>	<b>26,682.2</b>	<b>28,670.3</b>	<b>28,772.5</b>	<b>29,538.5</b>	<b>32,071.2</b>
Currency Outside Banks (MA)	3,831.4	3,671.6	3,795.9	4,013.5	4,337.0	5,007.9
Liberian Currency in Circulation (MA)	4,554.5	4,539.9	4,583.7	4,674.9	4,910.3	5,550.6
(-) Currency Holdings (CoB)	723.1	868.3	787.8	661.4	573.3	542.6
<b>Demand Deposits</b>	<b>15,848.3</b>	<b>16,163.1</b>	<b>17,471.4</b>	<b>16,871.0</b>	<b>16,354.3</b>	<b>19,172.1</b>
Demand Deposits (MA)	843.3	842.4	841.3	934.2	886.3	967.4
Demand Deposits (CoB)	15,005.1	15,320.7	16,630.1	15,936.9	15,468.1	18,204.7
<b>Other Deposits</b>	<b>7,007.5</b>	<b>6,847.5</b>	<b>7,403.0</b>	<b>7,887.9</b>	<b>8,847.1</b>	<b>7,891.2</b>
Other Deposits (MA)	69.1	59.2	37.0	69.8	821.7	318.5
Time and Savings Deposits (CoB)	6,938.4	6,788.4	7,365.9	7,818.1	8,025.4	7,572.7
<b>Bonds and Securities (CoB)</b>	<b>0.0</b>	<b>0.0</b>	<b>0.0</b>	<b>0.0</b>	<b>0.0</b>	<b>0.0</b>
<b>Restricted Deposits</b>	<b>55.4</b>	<b>53.9</b>	<b>53.9</b>	<b>53.9</b>	<b>53.9</b>	<b>53.2</b>
<b>Capital Accounts</b>	<b>25,551.4</b>	<b>25,547.7</b>	<b>26,189.8</b>	<b>26,072.5</b>	<b>25,137.5</b>	<b>26,567.0</b>
Capital Accounts (MA)	18,387.9	18,374.9	18,434.0	18,202.7	17,236.6	17,406.5
Capital Accounts (CoB)	7,163.6	7,172.8	7,755.8	7,869.8	7,900.9	9,160.5
<b>Other Items (net)</b>	<b>(8,724.4)</b>	<b>(8,867.0)</b>	<b>(8,887.9)</b>	<b>(9,387.5)</b>	<b>(7,703.1)</b>	<b>(8,458.5)</b>
Unclassified Liabilities (MA)	9,695.5	9,573.7	9,829.6	9,813.8	9,306.9	9,772.2
(-) Unclassified Assets (MA)	14,797.6	14,715.8	15,266.3	15,258.1	14,242.2	14,616.6
(-) Unclassified Assets (CoB)	5,315.7	5,315.7	5,555.7	5,801.3	5,831.1	5,773.4
Unclassified Liabilities (CoB)	3,031.6	3,180.4	3,406.5	3,175.0	3,636.4	3,534.4
Commercial Banks' Deposits (MA)	5,942.7	6,228.4	6,870.1	6,984.8	7,115.0	7,437.2
(-) Reserves (CoB)	6,754.7	7,317.1	7,790.4	7,887.6	7,957.4	8,209.6
Currency Holdings (CoB)	723.1	868.3	787.8	661.4	573.3	542.6
Liabilities to Central Bank (CoB)	0.0	0.0	0.0	0.0	0.0	53.6
(-) Claims on Domestic Banks (MA)	398.8	312.5	293.5	241.9	250.4	615.6
(-) Claims on Central Bank of Liberia (CoB)	908.9	906.5	906.5	897.3	869.5	895.6
(-) Unbalanced Items	58.2	52.8	30.6	63.8	815.7	312.4
<b>Vertical Check</b>	<b>(0.0)</b>	<b>0.0</b>	<b>0.0</b>	<b>(0.0)</b>	<b>0.0</b>	<b>(0.0)</b>

*NBFIs: Non-Bank Financial Institutions*
*Source: Central Bank of Liberia, Monrovia, Liberia.*

## MONEY AND BANKING

## 1.1b: Depository Corporations Survey - 2011

Millions of Liberian Dollars

	Jan-11	Feb-11	Mar-11	Apr-11	May-11	Jun-11
<b>Foreign Assets (net)</b>	<b>22,475.0</b>	<b>21,539.7</b>	<b>22,015.0</b>	<b>22,571.8</b>	<b>25,146.2</b>	<b>22,892.3</b>
Foreign Assets (MA)	34,091.0	33,391.4	33,806.4	34,455.9	36,120.2	35,660.7
(-) Foreign Liabilities (MA)	20,253.8	20,321.3	20,404.4	20,986.1	20,735.6	20,800.5
Foreign Assets (CoB)	9,699.2	9,719.0	9,894.2	10,510.7	11,157.5	9,418.0
(-) Foreign Liabilities (CoB)	1,061.4	1,249.4	1,281.2	1,408.6	1,395.9	1,386.0
<b>Domestic Credit</b>	<b>26,660.1</b>	<b>27,936.0</b>	<b>28,137.5</b>	<b>28,892.9</b>	<b>28,086.6</b>	<b>29,516.2</b>
Claims on General Government (net)	11,562.9	12,484.5	12,460.0	12,774.5	11,759.2	13,135.5
Claims on General Government (MA)	18,969.6	18,907.5	18,845.3	18,969.4	18,968.7	19,094.2
(-) General Government Deposits (MA)	7,214.7	6,208.7	6,035.9	5,731.9	6,709.5	5,390.4
Claims on General Government (CoB)	467.6	455.2	453.6	456.8	445.9	448.9
(-) General Government Deposits (CoB)	659.6	669.6	803.0	919.8	945.9	1,017.3
Claims on Public Corporations (MA)	0.0	0.0	0.0	0.0	0.0	0.0
Claims on Public Corporations (CoB)	920.1	845.3	886.3	860.8	853.6	893.0
Claims on Private Sector (MA)	362.5	363.8	353.2	357.0	357.1	359.8
Claims on Private Sector (CoB)	13,744.7	14,189.1	14,365.9	14,808.1	15,007.9	14,990.9
Claims on NBFIs (MA)	0.0	0.0	0.0	0.0	0.0	0.0
Claims on NBFIs (CoB)	69.9	53.2	72.2	92.6	108.9	137.1
<b>Money</b>	<b>31,523.4</b>	<b>31,672.1</b>	<b>32,697.8</b>	<b>33,718.9</b>	<b>35,272.5</b>	<b>35,666.9</b>
Currency Outside Banks (MA)	4,615.5	4,583.4	4,726.9	4,809.2	4,700.5	4,924.6
Liberian Currency in Circulation (MA)	5,496.0	5,528.1	5,605.9	5,653.9	5,626.1	5,647.3
(-) Currency Holdings (CoB)	880.5	944.8	879.0	844.7	925.6	722.7
<b>Demand Deposits</b>	<b>18,844.3</b>	<b>18,491.2</b>	<b>18,789.7</b>	<b>19,503.7</b>	<b>20,993.1</b>	<b>20,725.8</b>
Demand Deposits (MA)	971.0	1,007.0	1,020.8	1,024.3	1,042.7	1,073.5
Demand Deposits (CoB)	17,873.3	17,484.2	17,768.9	18,479.3	19,950.4	19,652.3
<b>Other Deposits</b>	<b>8,063.7</b>	<b>8,597.5</b>	<b>9,181.2</b>	<b>9,406.1</b>	<b>9,579.0</b>	<b>10,016.6</b>
Other Deposits (MA)	122.8	27.7	224.2	172.9	124.1	93.0
Time and Savings Deposits (CoB)	7,940.8	8,569.8	8,957.0	9,233.2	9,454.9	9,923.5
<b>Bonds and Securities (CoB)</b>	<b>0.0</b>	<b>0.0</b>	<b>0.0</b>	<b>0.0</b>	<b>0.0</b>	<b>0.0</b>
<b>Restricted Deposits</b>	<b>53.2</b>	<b>52.8</b>	<b>52.8</b>	<b>52.8</b>	<b>52.8</b>	<b>52.8</b>
<b>Capital Accounts</b>	<b>26,917.3</b>	<b>27,311.4</b>	<b>26,973.2</b>	<b>27,442.0</b>	<b>27,068.3</b>	<b>26,826.0</b>
Capital Accounts (MA)	17,694.6	17,550.5	17,412.5	17,792.4	17,466.9	17,677.0
Capital Accounts (CoB)	9,222.7	9,760.9	9,560.8	9,649.5	9,601.4	9,148.9
<b>Other Items (net)</b>	<b>(9,236.0)</b>	<b>(9,532.9)</b>	<b>(9,347.1)</b>	<b>(9,576.0)</b>	<b>(9,036.7)</b>	<b>(10,044.3)</b>
Unclassified Liabilities (MA)	9,513.1	9,603.2	9,816.8	9,906.2	9,857.5	9,868.4
(-) Unclassified Assets (MA)	15,027.6	15,077.4	15,154.4	15,764.4	15,583.0	15,665.5
(-) Unclassified Assets (CoB)	6,267.0	6,072.1	6,240.9	6,626.9	6,379.0	6,490.4
Unclassified Liabilities (CoB)	4,224.6	3,911.3	4,004.3	4,498.6	4,246.8	4,002.4
Commercial Banks' Deposits (MA)	7,779.8	8,128.2	8,493.5	8,856.0	10,079.8	10,860.5
(-) Reserves (CoB)	9,063.0	9,550.2	9,703.8	10,069.5	10,878.8	11,989.2
Currency Holdings (CoB)	880.5	944.8	879.0	844.7	925.6	722.7
Liabilities to Central Bank (CoB)	108.8	108.4	108.0	108.8	108.8	109.5
(-) Claims on Domestic Banks (MA)	607.7	647.3	867.2	586.0	625.6	643.0
(-) Claims on Central Bank of Liberia (CoB)	894.2	903.4	900.4	906.5	906.5	906.5
(-) Unbalanced Items	116.8	21.6	217.9	163.0	117.9	86.8
<b>Vertical Check</b>	<b>0.0</b>	<b>0.0</b>	<b>0.0</b>	<b>0.0</b>	<b>(0.0)</b>	<b>0.0</b>

NBFIs: Non-Bank Financial Institutions

Source: Central Bank of Liberia, Monrovia, Liberia.

## MONEY AND BANKING

## 1.1b: Depository Corporations Survey - 2011- Continued

Millions of Liberian Dollars

	Jul-11	Aug-11	Sep-11	Oct-11	Nov-11	Dec-11
<b>Foreign Assets (net)</b>	<b>24,209.4</b>	<b>24,288.7</b>	<b>24,705.0</b>	<b>23,287.9</b>	<b>22,546.8</b>	<b>26,814.5</b>
Foreign Assets (MA)	35,704.5	36,292.2	35,876.0	35,589.4	35,391.8	37,963.0
(-) Foreign Liabilities (MA)	20,681.6	20,807.8	20,664.1	20,664.3	20,545.7	20,832.7
Foreign Assets (CoB)	10,379.9	10,012.7	10,200.7	9,146.8	8,521.3	10,723.2
(-) Foreign Liabilities (CoB)	1,193.4	1,208.3	707.7	784.0	820.7	1,039.0
<b>Domestic Credit</b>	<b>30,187.4</b>	<b>30,212.8</b>	<b>31,834.9</b>	<b>32,321.2</b>	<b>33,252.2</b>	<b>34,458.6</b>
Claims on General Government (net)	13,936.3	13,204.8	14,412.1	14,153.5	14,964.8	15,283.3
Claims on General Government (MA)	18,969.7	18,969.3	18,845.4	18,852.3	18,727.7	18,976.7
(-) General Government Deposits (MA)	4,526.3	5,371.7	4,134.9	4,278.5	3,299.1	3,100.9
Claims on General Government (CoB)	445.9	445.9	500.3	442.8	439.7	424.2
(-) General Government Deposits (CoB)	953.0	838.6	798.7	863.0	903.6	1,016.7
Claims on Public Corporations (MA)	0.0	0.0	0.0	0.0	0.0	0.0
Claims on Public Corporations (CoB)	780.9	958.3	1,080.2	719.3	692.3	719.2
Claims on Private Sector (MA)	357.7	361.4	360.2	346.4	214.0	421.6
Claims on Private Sector (CoB)	14,977.5	15,542.9	15,880.6	16,985.8	17,289.3	17,934.2
Claims on NBFIs (MA)	0.0	0.0	0.0	0.0	0.0	0.0
Claims on NBFIs (CoB)	135.0	145.4	101.9	116.1	91.8	100.4
<b>Money</b>	<b>36,214.7</b>	<b>36,583.8</b>	<b>40,737.4</b>	<b>41,022.0</b>	<b>41,038.2</b>	<b>44,634.6</b>
Currency Outside Banks (MA)	5,071.8	5,026.5	5,124.3	5,463.4	6,022.4	6,704.3
Liberian Currency in Circulation (MA)	5,660.9	5,696.2	5,710.5	5,958.0	6,534.8	7,251.6
(-) Currency Holdings (CoB)	589.1	669.7	586.2	494.5	512.4	547.3
<b>Demand Deposits</b>	<b>20,967.5</b>	<b>21,765.3</b>	<b>23,527.7</b>	<b>23,938.0</b>	<b>23,341.4</b>	<b>24,601.1</b>
Demand Deposits (MA)	1,062.8	1,112.4	1,088.4	1,178.5	1,215.1	1,236.4
Demand Deposits (CoB)	19,904.6	20,652.8	22,439.3	22,759.5	22,126.3	23,364.7
<b>Other Deposits</b>	<b>10,175.4</b>	<b>9,792.1</b>	<b>12,085.4</b>	<b>11,620.5</b>	<b>11,674.3</b>	<b>13,329.2</b>
Other Deposits (MA)	80.9	(411.9)	1,062.4	136.9	114.9	1,973.4
Time and Savings Deposits (CoB)	10,094.5	10,204.0	11,023.0	11,483.7	11,559.5	11,355.8
<b>Bonds and Securities (CoB)</b>	<b>0.0</b>	<b>0.0</b>	<b>0.0</b>	<b>0.0</b>	<b>0.0</b>	<b>0.0</b>
<b>Restricted Deposits</b>	<b>52.8</b>	<b>51.7</b>	<b>51.7</b>	<b>54.1</b>	<b>54.1</b>	<b>54.1</b>
<b>Capital Accounts</b>	<b>26,790.3</b>	<b>27,447.1</b>	<b>27,252.1</b>	<b>27,191.9</b>	<b>27,110.5</b>	<b>26,913.6</b>
Capital Accounts (MA)	17,546.6	17,489.5	17,260.9	17,170.8	17,102.0	16,732.6
Capital Accounts (CoB)	9,243.7	9,957.6	9,991.1	10,021.1	10,008.4	10,181.0
<b>Other Items (net)</b>	<b>(8,580.1)</b>	<b>(9,993.0)</b>	<b>(10,438.8)</b>	<b>(12,522.1)</b>	<b>(12,288.8)</b>	<b>(8,355.8)</b>
Unclassified Liabilities (MA)	10,782.3	10,851.4	10,789.4	10,820.8	10,572.0	11,453.5
(-) Unclassified Assets (MA)	15,579.3	15,676.5	16,100.9	16,084.2	16,041.8	16,216.7
(-) Unclassified Assets (CoB)	6,400.9	6,843.2	8,890.3	10,885.3	10,999.3	8,824.9
Unclassified Liabilities (CoB)	4,252.0	4,174.6	4,668.9	5,237.1	5,902.5	5,311.0
Commercial Banks' Deposits (MA)	10,904.1	11,071.4	11,149.2	11,304.8	11,654.6	11,914.6
(-) Reserves (CoB)	11,757.4	12,323.2	12,215.7	12,095.9	12,536.2	12,780.4
Currency Holdings (CoB)	589.1	669.7	586.2	494.5	512.4	547.3
Liabilities to Central Bank (CoB)	108.8	108.8	108.0	108.0	107.3	108.8
(-) Claims on Domestic Banks (MA)	647.0	701.9	689.7	653.0	675.4	930.6
(-) Claims on Central Bank of Liberia (CoB)	906.5	906.0	899.8	899.8	893.6	906.0
(-) Unbalanced Items	74.7	(418.0)	1,056.1	130.8	108.6	1,967.6
<b>Vertical Check</b>	<b>(0.0)</b>	<b>(0.0)</b>	<b>0.0</b>	<b>(0.0)</b>	<b>0.0</b>	<b>0.0</b>

NBFIs: Non-Bank Financial Institutions

Source: Central Bank of Liberia, Monrovia, Liberia.



**MONEY AND BANKING**

CENTRAL BANK OF LIBERIA

**1.1c: Depository Corporations Survey - 2012**

Millions of Liberian Dollars

	Jan-12	Feb-12	Mar-12	Apr-12
<b>Foreign Assets (net)</b>	<b>27,538.9</b>	<b>26,345.9</b>	<b>27,469.0</b>	<b>26,215.5</b>
Foreign Assets (MA)	39,000.0	38,195.1	38,970.8	39,755.2
(-) Foreign Liabilities (MA)	21,103.9	21,104.0	21,247.4	21,261.9
Foreign Assets (CoB)	10,404.8	11,847.6	12,626.2	10,353.5
(-) Foreign Liabilities (CoB)	762.0	2,592.7	2,880.6	2,631.2
<b>Domestic Credit</b>	<b>33,489.3</b>	<b>34,764.6</b>	<b>34,516.3</b>	<b>33,845.5</b>
Claims on General Government (net)	13,683.1	14,489.2	13,830.3	12,915.8
Claims on General Government (MA)	19,225.4	19,226.1	19,350.3	19,350.3
(-) General Government Deposits (MA)	4,933.7	4,098.5	4,816.8	5,736.3
Claims on General Government (CoB)	430.0	416.1	421.8	421.8
(-) General Government Deposits (CoB)	1,038.6	1,054.5	1,125.0	1,120.0
Claims on Public Corporations (MA)	0.0	0.0	0.0	0.0
Claims on Public Corporations (CoB)	1,053.9	1,187.5	1,279.3	1,264.6
Claims on Private Sector (MA)	426.0	341.5	345.1	347.3
Claims on Private Sector (CoB)	18,238.4	18,660.6	18,946.9	19,203.3
Claims on NBFIs (MA)	0.0	0.0	0.0	0.0
Claims on NBFIs (CoB)	87.8	85.8	114.7	114.5
<b>Money</b>	<b>43,180.9</b>	<b>41,669.9</b>	<b>38,975.8</b>	<b>41,410.4</b>
Currency Outside Banks (MA)	6,157.1	6,091.6	6,094.3	5,908.7
Liberian Currency in Circulation (MA)	7,144.4	7,263.5	7,339.6	7,354.7
(-) Currency Holdings (CoB)	987.3	1,171.8	1,245.3	1,446.0
<b>Demand Deposits</b>	<b>24,427.4</b>	<b>23,431.7</b>	<b>20,827.1</b>	<b>23,393.5</b>
Demand Deposits (MA)	1,253.1	1,319.0	1,351.4	1,366.8
Demand Deposits (CoB)	23,174.3	22,112.7	19,475.7	22,026.6
<b>Other Deposits</b>	<b>12,596.5</b>	<b>12,146.6</b>	<b>12,054.4</b>	<b>12,108.2</b>
Other Deposits (MA)	290.1	287.8	312.7	272.2
Time and Savings Deposits (CoB)	12,306.4	11,858.8	11,741.7	11,836.0
<b>Bonds and Securities (CoB)</b>	<b>0.0</b>	<b>0.0</b>	<b>0.0</b>	<b>0.0</b>
<b>Restricted Deposits</b>	<b>48.1</b>	<b>47.6</b>	<b>47.6</b>	<b>46.8</b>
<b>Capital Accounts</b>	<b>27,494.5</b>	<b>27,565.8</b>	<b>27,581.9</b>	<b>27,497.6</b>
Capital Accounts (MA)	16,963.1	16,980.5	17,016.6	16,830.4
Capital Accounts (CoB)	10,531.4	10,585.3	10,565.3	10,667.2
<b>Other Items (net)</b>	<b>(9,405.2)</b>	<b>(7,885.0)</b>	<b>(4,307.3)</b>	<b>(8,621.5)</b>
Unclassified Liabilities (MA)	11,691.6	11,616.3	11,746.8	11,606.6
(-) Unclassified Assets (MA)	16,406.4	16,567.4	16,621.0	16,628.8
(-) Unclassified Assets (CoB)	9,981.7	8,656.5	8,115.3	8,145.4
Unclassified Liabilities (CoB)	6,994.8	7,199.6	9,612.7	6,084.3
Commercial Banks' Deposits (MA)	12,318.1	12,309.0	12,267.6	12,372.1
(-) Reserves (CoB)	13,831.1	13,768.5	13,110.9	14,075.8
Currency Holdings (CoB)	987.3	1,171.8	1,245.3	1,446.0
Liabilities to Central Bank (CoB)	110.3	109.5	111.0	111.0
(-) Claims on Domestic Banks (MA)	652.3	661.3	824.3	732.1
(-) Claims on Central Bank of Liberia (CoB)	919.3	919.3	925.5	925.5
(-) Unbalanced Items	283.6	281.7	306.3	266.0
<b>Vertical Check</b>	<b>(0.0)</b>	<b>0.0</b>	<b>(0.0)</b>	<b>(0.0)</b>

NBFIs: Non-Bank Financial Institutions

Source: Central Bank of Liberia, Monrovia, Liberia.

**MONEY AND BANKING**

CENTRAL BANK OF LIBERIA

**1.2a: Sectoral Balance Sheet of Other Depository Corporations - 2010**

*Thousands of Liberian Dollars*

	Jan-10	Feb-10	Mar-10	Apr-10	May-10	Jun-10
<b>Assets</b>						
Reserves	6,174,491	6,662,125	6,189,634	6,701,321	6,634,582	6,644,633
<i>of which: Cash on Hand: Coins/LD Notes</i>	721,935	670,770	627,673	737,980	704,254	815,142
Foreign Assets	6,813,003	6,920,877	6,901,645	7,633,061	7,798,525	8,067,344
Claims on General Government	507,600	500,250	493,351	482,625	482,625	489,375
Claims on Public Corporations	1,565,742	1,566,420	1,679,494	1,942,152	1,873,860	2,037,954
Claims on Private Sector	9,344,520	9,623,164	9,128,124	9,012,991	9,136,053	9,412,419
Claims on Central Bank of Liberia	901,184	908,862	896,505	896,505	896,505	905,773
Claims on NBFIs	6,303	7,254	1,017	8,986	10,113	19,657
Unclassified Assets	5,793,903	5,179,401	4,198,236	4,953,777	5,633,739	5,595,950
<b>Total Assets</b>	<b>31,106,746</b>	<b>31,368,354</b>	<b>29,488,007</b>	<b>31,631,419</b>	<b>32,466,002</b>	<b>33,173,106</b>
	Jan-10	Feb-10	Mar-10	Apr-10	May-10	Jun-10
<b>Liabilities</b>						
Demand Deposits	12,742,665	13,260,481	13,115,999	14,574,345	14,417,562	14,915,456
Time and Savings Deposits	6,208,487	6,275,991	5,946,575	6,573,774	6,652,052	6,865,423
Restricted Deposits	36,980	36,985	36,985	36,985	36,632	36,632
Bonds and Securities	0	0	0	0	0	0
Foreign Liabilities	776,192	950,230	847,345	947,710	776,157	952,681
Government Deposits	192,909	172,398	144,965	274,327	272,563	224,680
Liabilities to Central Bank of Liberia	0	0	0	0	0	0
Capital Accounts	6,948,961	7,301,168	6,777,349	7,319,944	7,222,814	7,113,195
Unclassified Liabilities	4,200,553	3,371,101	2,618,790	1,904,333	3,088,221	3,065,040
<b>Total Liabilities</b>	<b>31,106,746</b>	<b>31,368,354</b>	<b>29,488,007</b>	<b>31,631,419</b>	<b>32,466,002</b>	<b>33,173,106</b>
<b>Vertical Check (Assets/Liabilities)</b>	<b>0</b>	<b>0</b>	<b>0</b>	<b>0</b>	<b>0</b>	<b>0</b>

*NBFIs: Non-Bank Financial Institutions*

*Source : Central Bank of Liberia, Monrovia, Liberia.*

**MONEY AND BANKING**

CENTRAL BANK OF LIBERIA

**1.2a: Sectoral Balance Sheet of Other Depository Corporations - 2010**

*Thousands of Liberian Dollars*

	<b>Jul-10</b>	<b>Aug-10</b>	<b>Sep-10</b>	<b>Oct-10</b>	<b>Nov-10</b>	<b>Dec-10</b>
<b>Assets</b>						
Reserves	6,754,660	7,317,092	7,790,393	7,887,626	7,957,353	8,209,588
<i>of which: Cash on Hand: Coins/LD Notes</i>	723,091	868,284	787,797	661,389	573,316	542,617
Foreign Assets	7,888,644	7,345,057	8,225,803	7,393,100	7,541,972	10,957,067
Claims on General Government	489,375	489,375	478,500	462,788	448,279	461,179
Claims on Public Corporations	598,135	729,937	738,980	633,914	589,845	500,477
Claims on Private Sector	11,225,520	11,433,728	12,663,390	13,066,475	13,097,722	13,325,657
Claims on Central Bank of Liberia	908,862	906,538	906,538	897,270	869,466	895,611
Claims on NBFIs	70,521	82,508	96,968	95,854	85,121	94,698
Unclassified Assets	5,315,690	5,518,703	5,555,718	5,801,346	5,831,144	5,773,423
<b>Total Assets</b>	<b>33,251,407</b>	<b>33,822,938</b>	<b>36,456,290</b>	<b>36,238,372</b>	<b>36,420,903</b>	<b>40,217,700</b>
	<b>Jul-10</b>	<b>Aug-10</b>	<b>Sep-10</b>	<b>Oct-10</b>	<b>Nov-10</b>	<b>Dec-10</b>
<b>Liabilities</b>						
Demand Deposits	15,005,053	15,320,742	16,630,139	15,936,873	15,468,096	18,204,714
Time and Savings Deposits	6,938,369	6,788,358	7,365,935	7,818,103	8,025,396	7,572,695
Restricted Deposits	36,632	35,127	35,127	35,127	35,127	34,412
Bonds and Securities	0	0	0	0	0	0
Foreign Liabilities	888,647	860,355	774,611	930,449	845,875	1,009,242
Government Deposits	187,588	465,153	488,256	473,000	509,034	648,156
Liabilities to Central Bank of Liberia	0	0	0	0	0	53,625
Capital Accounts	7,163,557	7,172,844	7,755,768	7,869,835	7,900,944	9,160,492
Unclassified Liabilities	3,031,561	3,180,358	3,406,454	3,174,984	3,636,431	3,534,364
<b>Total Liabilities</b>	<b>33,251,407</b>	<b>33,822,938</b>	<b>36,456,290</b>	<b>36,238,372</b>	<b>36,420,903</b>	<b>40,217,700</b>
<b>Vertical Check (Assets/Liabilities)</b>	<b>0</b>	<b>0</b>	<b>0</b>	<b>0</b>	<b>0</b>	<b>0</b>

*NBFIs: Non-Bank Financial Institutions*

*Source : Central Bank of Liberia, Monrovia, Liberia.*

MONEY AND BANKING

CENTRAL BANK OF LIBERIA

**1.2b: Sectoral Balance Sheet of Other Depository Corporations - 2011**

*Thousands of Liberian Dollars*

	Jan-11	Feb-11	Mar-11	Apr-11	May-11	Jun-11
<b>Assets</b>						
Reserves	9,062,971	9,550,168	9,703,791	10,069,503	10,878,778	11,989,158
<i>of which: Cash on Hand: Coins/LD Notes</i>	880,544	944,753	878,989	844,650	925,569	722,668
Foreign Assets	9,699,204	9,719,014	9,894,163	10,510,723	11,157,492	9,418,032
Claims on General Government	467,629	455,179	453,604	456,754	445,868	448,943
Claims on Public Corporations	920,094	845,350	886,256	860,792	853,552	892,970
Claims on Private Sector	13,744,667	14,189,133	14,365,887	14,808,125	15,007,944	14,990,876
Claims on Central Bank of Liberia	894,181	903,444	900,355	906,533	906,533	906,533
Claims on NBFIs	69,930	53,184	72,219	92,601	108,889	137,074
Unclassified Assets	6,266,966	6,072,065	6,240,852	6,626,870	6,379,001	6,490,429
<b>Total Assets</b>	<b>41,125,641</b>	<b>41,787,536</b>	<b>42,517,127</b>	<b>44,331,901</b>	<b>45,738,058</b>	<b>45,274,015</b>
	Jan-11	Feb-11	Mar-11	Apr-11	May-11	Jun-11
<b>Liabilities</b>						
Demand Deposits	17,873,259	17,484,231	17,768,882	18,479,321	19,950,355.38	19,652,319.21
Time and Savings Deposits	7,940,847	8,569,758	8,956,965	9,233,199	9,454,912.80	9,923,518.95
Restricted Deposits	34,412	34,412	34,011	34,011	34,011	34,011
Bonds and Securities	0	0	0	0	0	0
Foreign Liabilities	1,061,444	1,249,368	1,281,198	1,408,623	1,395,941	1,386,014
Government Deposits	659,629	669,578	803,022	919,812	945,934	1,017,293
Liabilities to Central Bank of Liberia	108,750	108,375	108,000	108,750	108,750	109,500
Capital Accounts	9,222,734	9,760,904	9,560,758	9,649,546	9,601,369	9,148,945
Unclassified Liabilities	4,224,566	3,911,311	4,004,290	4,498,639	4,246,785	4,002,413
<b>Total Liabilities</b>	<b>41,125,641</b>	<b>41,787,536</b>	<b>42,517,127</b>	<b>44,331,901</b>	<b>45,738,058</b>	<b>45,274,015</b>
<b>Vertical Check (Assets/Liabilities)</b>	<b>0</b>	<b>0</b>	<b>0</b>	<b>0</b>	<b>0</b>	<b>0</b>

NBFIs: Non-Bank Financial Institutions

Source : Central Bank of Liberia, Monrovia, Liberia.

**MONEY AND BANKING**

CENTRAL BANK OF LIBERIA

**1.2b: Sectoral Balance Sheet of Other Depository Corporations - 2011- Continued- 2012**

*Thousands of Liberian Dollars*

	Jul-11	Aug-11	Sep-11	Oct-11	Nov-11	Dec-11
<b>Assets</b>						
Reserves	11,757,383	12,323,153	12,215,703	12,095,888	12,536,166	12,780,443
<i>of which: Cash on Hand: Coins/LD Notes</i>	589,080	669,717	586,191	494,536	512,400	547,305
Foreign Assets	10,379,895	10,012,656	10,200,699	9,146,767	8,521,327	10,723,187
Claims on General Government	445,868	445,868	500,348	442,818	439,743	424,154
Claims on Public Corporations	780,927	958,317	1,080,184	719,280	692,313	719,226
Claims on Private Sector	14,977,487	15,542,879	15,880,600	16,985,835	17,289,277	17,934,205
Claims on Central Bank of Liberia	906,533	905,956	899,777	899,777	893,598	905,956
Claims on NBFIs	134,987	145,432	101,875	116,122	91,821	100,355
Unclassified Assets	6,400,898	6,843,227	8,890,325	10,885,251	10,999,307	8,824,880
<b>Total Assets</b>	<b>45,783,979</b>	<b>47,177,489</b>	<b>49,769,512</b>	<b>51,291,738</b>	<b>51,463,552</b>	<b>52,412,405</b>
	Jul-11	Aug-11	Sep-11	Oct-11	Nov-11	Dec-11
<b>Liabilities</b>						
Demand Deposits	19,904,640.35	20,652,821.98	22,439,299.53	22,759,475.57	22,126,282	23,364,708
Time and Savings Deposits	10,094,496.04	10,203,973.70	11,022,975.98	11,483,680.58	11,559,461	11,355,848
Restricted Deposits	34,011	32,900	32,900	35,330	35,330	35,330
Bonds and Securities	0	0	0	0	0	0
Foreign Liabilities	1,193,357	1,208,337	707,665	784,004	820,686	1,039,036
Government Deposits	953,032	838,572	798,687	863,046	903,591	1,016,679
Liabilities to Central Bank of Liberia	108,750	108,750	108,000	108,000	107,250	108,750
Capital Accounts	9,243,710	9,957,570	9,991,132	10,021,097	10,008,405	10,181,041
Unclassified Liabilities	4,251,983	4,174,563	4,668,853	5,237,104	5,902,547	5,311,013
<b>Total Liabilities</b>	<b>45,783,979</b>	<b>47,177,489</b>	<b>49,769,512</b>	<b>51,291,738</b>	<b>51,463,552</b>	<b>52,412,405</b>
<b>Vertical Check (Assets/Liabilities)</b>	<b>0</b>	<b>0</b>	<b>0</b>	<b>0</b>	<b>0</b>	<b>0</b>

*NBFIs: Non-Bank Financial Institutions*

*Source: Central Bank of Liberia, Monrovia, Liberia.*

**MONEY AND BANKING**

CENTRAL BANK OF LIBERIA

**L2c: Sectoral Balance Sheet of Other Depository Corporations - 2012**

*Thousands of Liberian Dollars*

	Jan-12	Feb-12	Mar-12	Apr-12
<b>Assets</b>				
Reserves	13,831,055	13,768,512	13,110,949	14,075,764
<i>of which: Cash on Hand: Coins/LD Notes</i>	987,278	1,171,834	1,245,335	1,445,990
Foreign Assets	10,404,765	11,847,634	12,626,193	10,353,460
Claims on General Government	430,004	416,127	421,824	421,824
Claims on Public Corporations	1,053,907	1,187,481	1,279,289	1,264,635
Claims on Private Sector	18,238,439	18,660,574	18,946,865	19,203,253
Claims on Central Bank of Liberia	919,321	919,321	925,500	925,500
Claims on NBFIs	87,825	85,813	114,747	114,525
Unclassified Assets	9,981,734	8,656,472	8,115,333	8,145,362
<b>Total Assets</b>	<b>54,947,049</b>	<b>55,541,933</b>	<b>55,540,699</b>	<b>54,504,320</b>
	Jan-12	Feb-12	Mar-12	Apr-12
<b>Liabilities</b>				
Demand Deposits	23,174,293	22,112,732	19,475,654	22,026,608
Time and Savings Deposits	12,306,365	11,858,751	11,741,653	11,835,954
Restricted Deposits	29,290	28,847	28,817	28,028
Bonds and Securities	0	0	0	0
Foreign Liabilities	761,966	2,592,737	2,880,560	2,631,190
Government Deposits	1,038,625	1,054,502	1,124,998	1,120,003
Liabilities to Central Bank of Liberia	110,250	109,500	111,000	111,000
Capital Accounts	10,531,420	10,585,266	10,565,305	10,667,231
Unclassified Liabilities	6,994,839	7,199,598	9,612,712	6,084,307
<b>Total Liabilities</b>	<b>54,947,049</b>	<b>55,541,933</b>	<b>55,540,699</b>	<b>54,504,320</b>
<b>Vertical Check (Assets/Liabilities)</b>	<b>0</b>	<b>0</b>	<b>0</b>	<b>0</b>

*NBFIs: Non-Bank Financial Institutions*

*Source : Central Bank of Liberia, Monrovia, Liberia.*

**MONEY AND BANKING**

CENTRAL BANK OF LIBERIA

**1.3a: Sectoral Balance Sheet of Central Bank of Liberia - 2010**

*Thousands of Liberian Dollars*

	Jan-10	Feb-10	March-10	April-10	May-10	June-10
<b>Assets</b>						
Foreign Assets	28,454,558	28,779,711	27,656,483	27,818,496	27,213,432	28,444,068
Claims on General Government	79,610,570	79,306,270	77,668,378	77,391,918	75,963,664	18,906,897
Claims on Public Corporations	0	0	0	0	0	0
Claims on Private Sector	123,764	126,774	45,740	44,847	45,256	60,761
Claims on Domestic Banks	230,175	248,029	327,362	272,935	652,458	502,458
Claims on NBFIs	0	0	0	0	0	0
Unclassified Assets	14,981,011	14,876,660	14,617,682	14,554,687	14,210,329	14,381,142
<b>Total Assets</b>	<b>123,400,078</b>	<b>123,337,445</b>	<b>120,315,646</b>	<b>120,082,883</b>	<b>118,085,139</b>	<b>62,295,326</b>
	Jan-10	Feb-10	March-10	April-10	May-10	June-10
<b>Liabilities</b>						
Reserve Money	10,827,951	11,452,356	10,967,263	11,049,159	11,337,501	11,283,522
Other Deposits	0	0	0	0	0	0
Restricted Reserves	18,781	18,781	18,781	18,781	18,781	18,781
Foreign Liabilities	80,083,679	79,526,178	77,700,494	77,338,640	75,468,893	17,884,448
Liabilities to General Government	4,899,058	4,676,364	4,447,603	4,411,052	4,375,688	5,284,434
Capital Accounts	18,344,443	18,511,259	18,140,166	18,117,314	18,064,358	18,309,178
Unclassified Liabilities	9,226,166	9,152,506	9,041,338	9,147,937	8,819,919	9,514,963
<b>Total Liabilities</b>	<b>123,400,078</b>	<b>123,337,445</b>	<b>120,315,646</b>	<b>120,082,883</b>	<b>118,085,139</b>	<b>62,295,326</b>
<b>Vertical Check (Assets/Liabilities)</b>	<b>(0)</b>	<b>0</b>	<b>0</b>	<b>0</b>	<b>0</b>	<b>0</b>

NBFIs: Non-Bank Financial Institutions

Source : Central Bank of Liberia, Monrovia, Liberia.

**MONEY AND BANKING**

CENTRAL BANK OF LIBERIA

**1.3a: Sectoral Balance Sheet of Central Bank of Liberia - 2010 (continued)**  
*Thousands of Liberian Dollars*

	Jul-10	Aug-10	Sep-10	Oct-10	Nov-10	Dec-10
<b>Assets</b>						
Foreign Assets	29,033,901	29,801,853	30,353,272	32,542,189	31,812,287	33,388,024
Claims on General Government	18,969,127	18,969,127	18,969,127	18,782,430	18,222,341	18,720,198
Claims on Public Corporations	0	0	0	0	0	0
Claims on Private Sector	163,217	167,736	54,986	57,564	57,463	350,667
Claims on Domestic Banks	398,767	312,480	293,465	241,882	250,354	615,641
Claims on NBFIs	0	0	0	0	0	0
Unclassified Assets	14,797,555	14,715,792	15,266,309	15,258,098	14,242,158	14,616,567
<b>Total Assets</b>	<b>63,362,566</b>	<b>63,966,987</b>	<b>64,937,158</b>	<b>66,882,163</b>	<b>64,584,604</b>	<b>67,691,098</b>
	Jul-10	Aug-10	Sep-10	Oct-10	Nov-10	Dec-10
<b>Liabilities</b>						
Reserve Money	11,398,766	11,663,517	12,325,689	12,657,632	13,727,287	14,267,497
Other Deposits	0	0	0	0	0	0
Restricted Reserves	18,781	18,781	18,781	18,781	18,781	18,781
Foreign Liabilities	18,901,249	18,782,685	19,354,131	19,340,528	18,200,987	19,706,304
Liabilities to General Government	4,960,449	5,553,434	4,974,899	6,848,734	6,094,037	6,519,838
Capital Accounts	18,387,867	18,374,853	18,434,033	18,202,695	17,236,590	17,406,510
Unclassified Liabilities	9,695,455	9,573,716	9,829,626	9,813,795	9,306,921	9,772,168
<b>Total Liabilities</b>	<b>63,362,566</b>	<b>63,966,987</b>	<b>64,937,158</b>	<b>66,882,164</b>	<b>64,584,604</b>	<b>67,691,098</b>
<b>Vertical Check (Assets/Liabilities)</b>	<b>0</b>	<b>0</b>	<b>0</b>	<b>0</b>	<b>0</b>	<b>0</b>

*NBFIs: Non-Bank Financial Institutions*

*Source : Central Bank of Liberia, Monrovia, Liberia.*



**MONEY AND BANKING**

CENTRAL BANK OF LIBERIA

**1.3b: Sectoral Balance Sheet of Central Bank of Liberia - 2011**

*Thousands of Liberian Dollars*

	Jan-11	Feb-11	Mar-11	Apr-11	May-11	Jun-11
<b>Assets</b>						
Foreign Assets	34,090,999	33,391,377	33,806,417	34,455,851	36,120,242	35,660,715
Claims on General Government	18,969,588	18,907,536	18,845,285	18,969,384	18,968,683	19,094,182
Claims on Public Corporations	0	0	0	0	0	0
Claims on Private Sector	362,532	363,837	353,185	356,980	357,078	359,815
Claims on Domestic Banks	607,717	647,325	867,250	585,994	625,617	642,989
Claims on NBFIs	0	0	0	0	0	0
Unclassified Assets	15,027,582	15,077,369	15,154,384	15,764,387	15,583,000	15,665,474
<b>Total Assets</b>	<b>69,058,418</b>	<b>68,387,444</b>	<b>69,026,521</b>	<b>70,132,597</b>	<b>71,654,620</b>	<b>71,423,175</b>
	Jan-11	Feb-11	Mar-11	Apr-11	May-11	Jun-11
<b>Liabilities</b>						
Reserve Money	14,363,567	14,684,978	15,338,149	15,697,202	16,866,437	17,668,127
Other Deposits	0	0	0	0	0	0
Restricted Reserves	18,781	18,781	18,781	18,781	18,781	18,781
Foreign Liabilities	20,253,764	20,321,309	20,404,416	20,986,103	20,735,580	20,800,472
Liabilities to General Government	7,214,669	6,208,661	6,035,886	5,731,876	6,709,456	5,390,367
Capital Accounts	17,694,579	17,550,510	17,412,480	17,792,423	17,466,900	17,677,027
Unclassified Liabilities	9,513,058	9,603,204	9,816,809	9,906,212	9,857,466	9,868,401
<b>Total Liabilities</b>	<b>69,058,418</b>	<b>68,387,444</b>	<b>69,026,521</b>	<b>70,132,597</b>	<b>71,654,620</b>	<b>71,423,175</b>
<b>Vertical Check (Assets/Liabilities)</b>	<b>0</b>	<b>0</b>	<b>0</b>	<b>0</b>	<b>0</b>	<b>0</b>

*NBFIs: Non-Bank Financial Institutions*

*Source: Central Bank of Liberia, Monrovia, Liberia.*

**MONEY AND BANKING**

CENTRAL BANK OF LIBERIA

**1.3b: Sectoral Balance Sheet of Central Bank of Liberia - 2011- Continued**  
Thousands of Liberian Dollars

	Jul-11	Aug-11	Sep-11	Oct-11	Nov-11	Dec-11
<b>Assets</b>						
Foreign Assets	35,704,476	36,292,165	35,876,040	35,589,415	35,391,833	37,963,032
Claims on General Government	18,969,705	18,969,271	18,845,357	18,852,285	18,727,666	18,976,710
Claims on Public Corporations	0	0	0	0	0	0
Claims on Private Sector	357,683	361,357	360,206	346,400	214,033	421,552
Claims on Domestic Banks	646,978	701,859	689,713	653,013	675,362	930,600
Claims on NBFIs	0	0	0	0	0	0
Unclassified Assets	15,579,258	15,676,525	16,100,947	16,084,177	16,041,755	16,216,701
<b>Total Assets</b>	<b>71,258,100</b>	<b>72,001,178</b>	<b>71,872,264</b>	<b>71,525,290</b>	<b>71,050,647</b>	<b>74,508,595</b>
	Jul-11	Aug-11	Sep-11	Oct-11	Nov-11	Dec-11
<b>Liabilities</b>						
Reserve Money	17,702,527	17,461,963	19,004,123	18,572,058	19,513,076	22,370,194
Other Deposits	0	0	0	0	0	0
Restricted Reserves	18,781	18,781	18,781	18,781	18,781	18,781
Foreign Liabilities	20,681,580	20,807,811	20,664,063	20,664,283	20,545,670	20,832,726
Liabilities to General Government	4,526,263	5,371,718	4,134,950	4,278,534	3,299,061	3,100,881
Capital Accounts	17,546,639	17,489,523	17,260,920	17,170,808	17,102,049	16,732,551
Unclassified Liabilities	10,782,309	10,851,383	10,789,427	10,820,826	10,572,010	11,453,462
<b>Total Liabilities</b>	<b>71,258,100</b>	<b>72,001,178</b>	<b>71,872,264</b>	<b>71,525,290</b>	<b>71,050,647</b>	<b>74,508,595</b>
<b>Vertical Check (Assets/Liabilities)</b>	<b>0</b>	<b>0</b>	<b>0</b>	<b>0</b>	<b>0</b>	<b>0</b>

\*Revised

NBFIs: Non-Bank Financial Institutions

Source : Central Bank of Liberia, Monrovia, Liberia.

**MONEY AND BANKING**

CENTRAL BANK OF LIBERIA

**1.3c: Sectoral Balance Sheet of Central Bank of Liberia -2012**  
Thousands of Liberian Dollars

	Jan-12	Feb-12	Mar-12	Apr-12
<b>Assets</b>				
Foreign Assets	38,999,997	38,195,091	38,970,809	39,755,203
Claims on General Government	19,225,445	19,226,073	19,350,280	19,350,329
Claims on Public Corporations	0	0	0	0
Claims on Private Sector	426,010	341,510	345,106	347,260
Claims on Domestic Banks	652,344	661,263	824,255	732,115
Claims on NBFIs	0	0	0	0
Unclassified Assets	16,406,446	16,567,422	16,620,978	16,628,780
<b>Total Assets</b>	<b>75,710,242</b>	<b>74,991,360</b>	<b>76,111,428</b>	<b>76,813,687</b>
	Jan-12	Feb-12	Mar-12	Apr-12
<b>Liabilities</b>				
Reserve Money	20,999,141	21,173,157	21,264,951	21,359,720
Other Deposits	0	0	0	0
Restricted Reserves	18,781	18,781	18,781	18,781
Foreign Liabilities	21,103,925	21,104,047	21,247,448	21,261,937
Liabilities to General Government	4,933,712	4,098,504	4,816,803	5,736,334
Capital Accounts	16,963,083	16,980,537	17,016,628	16,830,355
Unclassified Liabilities	11,691,600	11,616,333	11,746,817	11,606,561
<b>Total Liabilities</b>	<b>75,710,242</b>	<b>74,991,360</b>	<b>76,111,428</b>	<b>76,813,687</b>
<b>Vertical Check (Assets/Liabilities)</b>	<b>0</b>	<b>0</b>	<b>0</b>	<b>0</b>

\*Revised

NBFIs: Non-Bank Financial Institutions

Source : Central Bank of Liberia, Monrovia, Liberia.

MONEY AND BANKING

CENTRAL BANK OF LIBERIA

1.4a: Commercial Banks' Loans By Economic Sector- 2010

Thousands of Liberian Dollars

Sector	Jan-10		Feb-10		Mar-10		Apr-10		May-10		Jun-10	
	L\$	%	L\$	%	L\$	%	L\$	%	L\$	%	L\$	%
<b>1. Agriculture</b>	<b>54,527</b>	<b>7.8</b>	<b>61,299</b>	<b>8.3</b>	<b>368,963</b>	<b>3.6</b>	<b>313,667</b>	<b>3.1</b>	<b>293,622</b>	<b>2.9</b>	<b>346,084</b>	<b>3.3</b>
1.1 Rubber	-	-	-	-	104,176	1.0	71,858	0.7	72,215	0.7	73,551	0.7
1.2 Forestry	13,824	2.0	13,824	1.9	46,776	0.5	68,835	0.7	66,234	0.6	63,870	0.6
1.3 Fishery	-	-	-	6.5	82,644	0.8	66,209	0.7	70,499	0.7	70,372	0.7
1.4 Others	40,703	5.8	47,475	-	135,368	1.3	106,766	1.0	84,674	0.8	138,292	1.3
<b>2. Mining &amp; Quarrying</b>	<b>65</b>	<b>0.0</b>	<b>67</b>	<b>0.0</b>	<b>570</b>	<b>0.0</b>	<b>26,026</b>	<b>0.3</b>	<b>25,456</b>	<b>0.2</b>	<b>18,572</b>	<b>0.2</b>
2.1 Iron Ore	0.0	0.0	0.0	0.0	429.0	0.0	25,740.0	0.3	25,096.5	0.2	16,400.8	0.2
2.2 Quarrying	65	0.0	67	0.1	141	0.0	286	0.0	359	0.0	2,171	0.0
<b>3. Manufacturing</b>	<b>4,705</b>	<b>0.7</b>	<b>785</b>	<b>0.0</b>	<b>144,626</b>	<b>1.4</b>	<b>175,687</b>	<b>1.7</b>	<b>171,908</b>	<b>1.7</b>	<b>381,308</b>	<b>3.7</b>
<b>4. Construction</b>	<b>4,068</b>	<b>0.6</b>	<b>4,728</b>	<b>0.6</b>	<b>1,056,813</b>	<b>10.3</b>	<b>988,629</b>	<b>9.7</b>	<b>1,590,828</b>	<b>15.6</b>	<b>929,904</b>	<b>9.0</b>
4.1 Mortgage Loans	-	0.0	-	0.0	-	0.0	-	0.0	669,097	6.6	-	0.0
4.2 Home Improvement	-	0.0	-	0.0	39,754	0.4	39,325	0.4	46,976	0.5	46,746	0.5
4.3 Others	4,068	0.6	4,728	0.6	1,017,059	9.9	949,304	9.3	874,755	8.6	883,159	8.5
<b>5. Trans., Storage &amp; Comm.</b>	<b>4,957</b>	<b>0.7</b>	<b>5,376</b>	<b>0.7</b>	<b>1,656,603</b>	<b>16.2</b>	<b>1,608,718</b>	<b>15.8</b>	<b>1,616,504</b>	<b>15.8</b>	<b>1,760,489</b>	<b>17.0</b>
5.1 Transportation	1,728	0.2	2,141	0.3	927,850	9.0	882,248	8.7	925,059	9.1	969,047	9.4
5.2 Storage	0.0	0.0	0.0	0.0	0.0	0.0	0.0	0.0	0.0	0.0	0.0	0.0
5.3 Communication	3,229	0.5	3,235	0.4	728,753	7.1	726,471	7.1	691,445	6.8	791,442	7.6
<b>6. Trade, Hotel &amp; Rest.</b>	<b>266,643</b>	<b>38.0</b>	<b>287,040</b>	<b>39.0</b>	<b>3,035,559</b>	<b>29.6</b>	<b>3,027,744</b>	<b>29.7</b>	<b>2,974,278</b>	<b>29.2</b>	<b>2,918,583</b>	<b>28.2</b>
6.1 Diamond trade	0	0.0	0	0.0	10,582	0.1	10,582	0.1	11,726	0.1	12,788	0.1
6.2 Other trade	265,023	37.8	284,912	38.7	2,719,935	26.5	2,727,535	26.8	2,693,191	26.4	2,622,629	25.3
6.3 Hotels	50	0.0	52	0.0	259,385	2.5	248,590	2.4	221,209	2.2	238,631	2.3
6.4 Restaurants	1,570	0.2	2,076	0.3	45,658	0.4	41,037	0.4	48,153	0.5	44,536	0.4
<b>7. Others</b>	<b>366,420</b>	<b>52.2</b>	<b>376,137</b>	<b>51.1</b>	<b>3,989,446</b>	<b>38.9</b>	<b>4,037,635</b>	<b>39.7</b>	<b>3,527,205</b>	<b>34.6</b>	<b>3,999,394</b>	<b>38.6</b>
7.1 Services	323,402	46.1	295,156	40.1	1,723,155	16.8	1,872,670	18.4	1,336,219	13.1	1,255,594	12.1
7.2 Personal	42,222	6.0	80,238	10.9	1,816,770	17.7	1,733,079	17.0	1,700,096	16.7	2,238,356	21.6
7.3 GOL	45	0.0	31	0.0	67,243	0.7	67,244	0.7	67,246	0.7	67,952	0.7
7.4 Central Bank of Liberia	-	-	-	-	-	-	-	-	-	-	-	-
7.5 Public Corporations	5	0.0	5	0.0	90,024	0.9	64,212	0.6	76,582	0.8	73,122	0.7
7.6 Others	746	0.1	707	0.1	292,255	2.9	300,430	3.0	347,063	3.4	364,370	3.5
<b>TOTAL</b>	<b>701,385</b>	<b>100.0</b>	<b>735,432</b>	<b>100.0</b>	<b>10,252,578</b>	<b>100.0</b>	<b>10,178,104</b>	<b>100.0</b>	<b>10,199,798.30</b>	<b>100</b>	<b>10,354,334.66</b>	<b>100</b>

Source : Central Bank of Liberia, Monrovia, Liberia.

## MONEY AND BANKING

CENTRAL BANK OF LIBERIA

**1.4a: Commercial Banks' Loans By Economic Sector- 2010 (continued)***Thousands of Liberian Dollars*

Sector	Jul-10		Aug-10		Sep-10		Oct-10		Nov-10		Dec-10	
	L\$	%	L\$	%	L\$	%	L\$	%	L\$	%	L\$	%
<b>1. Agriculture</b>	<b>341,883</b>	<b>3.1</b>	<b>305,489</b>	<b>2.8</b>	<b>307,948</b>	<b>2.6</b>	<b>389,493</b>	<b>3.1</b>	<b>383,000</b>	<b>3.0</b>	<b>398,250</b>	<b>3.2</b>
1.1 Rubber	72,718	0.7	94,614	0.9	157,704	1.3	104,368	0.8	140,833	1.1	105,244	0.8
1.2 Forestry	64,851	0.6	55,970	0.5	40,605	0.3	98,035	0.8	60,419	0.5	78,749	0.6
1.3 Fishery	73,370	0.7	68,223	0.6	68,440	0.6	136,827	1.1	129,268	1.0	145,360	1.2
1.4 Others	130,945	1.2	86,683	0.8	41,199	0.3	50,262	0.4	52,482	0.4	68,897	0.5
<b>2. Mining &amp; Quarrying</b>	<b>25,671</b>	<b>0.2</b>	<b>41,477</b>	<b>0.4</b>	<b>56,557</b>	<b>0.5</b>	<b>2,160</b>	<b>0.0</b>	<b>71,390</b>	<b>0.6</b>	<b>2,085</b>	<b>0.0</b>
2.1 Iron Ore	23,562.5	0.2	26,752.5	0.2	54,375.0	0.5	0.0	0.0	67,135.0	0.5	0.0	0.0
2.2 Quarrying	2,108	0.0	14,725	0.1	2,182	0.0	2,160	0.0	4,255	0.0	2,085	0.0
<b>3. Manufacturing</b>	<b>391,019</b>	<b>3.6</b>	<b>146,130</b>	<b>1.4</b>	<b>162,587</b>	<b>1.4</b>	<b>146,684</b>	<b>1.2</b>	<b>155,772</b>	<b>1.2</b>	<b>162,694</b>	<b>1.3</b>
<b>4. Construction</b>	<b>1,155,840</b>	<b>10.5</b>	<b>638,354</b>	<b>5.9</b>	<b>1,047,493</b>	<b>8.7</b>	<b>1,098,051</b>	<b>8.7</b>	<b>1,115,678</b>	<b>8.8</b>	<b>1,215,416</b>	<b>9.6</b>
4.1 Mortgage Loans	-	0.0	4,858	0.0	101,500	0.8	107,625	0.9	108,750	0.9	117,975	0.9
4.2 Home Improvement	48,430	0.4	48,793	0.5	305,466	2.5	302,626	2.4	303,395	2.4	387,730	3.1
4.3 Others	1,107,410	10.1	584,704	5.4	640,527	5.3	687,799	5.5	703,533	5.6	709,711	5.6
<b>5. Trans., Storage &amp; Comm.</b>	<b>1,845,753</b>	<b>16.8</b>	<b>1,188,979</b>	<b>11.0</b>	<b>2,272,817</b>	<b>18.9</b>	<b>2,812,529</b>	<b>22.3</b>	<b>2,865,432</b>	<b>22.6</b>	<b>2,823,580</b>	<b>22.4</b>
5.1 Transportation	979,797	8.9	609,647	5.7	1,646,833	13.7	2,076,113	16.5	2,117,720	16.7	2,079,639	16.5
5.2 Storage	21,460.0	0.2	29,362.5	0.3	0.0	0.0	0.0	0.0	0.0	0.0	0.0	0.0
5.3 Communication	844,496	7.7	549,970	5.1	625,984	5.2	736,416	5.8	747,712	5.9	743,941	5.9
<b>6. Trade, Hotel &amp; Rest.</b>	<b>3,039,430</b>	<b>27.7</b>	<b>3,527,271</b>	<b>32.7</b>	<b>4,243,437</b>	<b>35.3</b>	<b>3,891,141</b>	<b>30.9</b>	<b>3,988,145</b>	<b>31.5</b>	<b>3,977,725</b>	<b>31.5</b>
6.1 Diamond trade	182,265	1.7	12,978	0.1	13,630	0.1	13,633	0.1	239,178	1.9	13,800	0.1
6.2 Other trade	2,572,169	23.4	3,313,106	30.8	3,962,148	32.9	3,603,644	28.6	3,475,871	27.5	3,653,619	28.9
6.3 Hotels	235,472	2.1	184,150	1.7	249,930	2.1	257,102	2.0	256,020	2.0	292,743	2.3
6.4 Restaurants	49,525	0.5	17,038	0.2	17,730	0.1	16,763	0.1	17,077	0.1	17,564	0.1
<b>7. Others</b>	<b>4,184,604</b>	<b>38.1</b>	<b>4,926,222</b>	<b>45.7</b>	<b>3,936,875</b>	<b>32.7</b>	<b>4,256,751</b>	<b>33.8</b>	<b>4,083,055</b>	<b>32.2</b>	<b>4,043,743</b>	<b>32.0</b>
7.1 Services	1,354,477	12.3	1,469,538	13.6	1,405,048	11.7	1,438,534	11.4	1,382,090	10.9	1,321,596	10.5
7.2 Personal	2,431,660	22.1	3,198,222	29.7	2,338,875	19.4	2,569,536	20.4	2,527,860	20.0	2,478,783	19.6
7.3 GOL	68,189	0.6	68,150	0.6	68,150	0.6	67,445	0.5	68,150	0.5	67,210	0.5
7.4 Central Bank of Liberia	0	0.0	0	0.0	0	0.0	0	0.0	0	0.0	0	0.0
7.5 Public Corporations	18,855	0.2	-	0.0	943	0.0	72	0.0	73	0.0	72	0.0
7.6 Others	311,423	2.8	190,313	1.8	123,860	1.0	181,164	1.4	104,883	0.8	176,083	1.4
<b>TOTAL</b>	<b>10,984,198.20</b>	<b>100</b>	<b>10,773,920.88</b>	<b>100</b>	<b>12,027,713.00</b>	<b>100</b>	<b>12,596,808.22</b>	<b>100</b>	<b>12,662,470.50</b>	<b>100</b>	<b>12,623,491.04</b>	<b>100</b>

*Source: Central Bank of Liberia, Monrovia, Liberia.*

## MONEY AND BANKING

CENTRAL BANK OF LIBERIA

**1.4b: Commercial Banks' Loans By Economic Sector - 2011***Thousands of Liberian Dollars*

Sector	Jan-11		Feb-11		Mar-11		Apr-11		May-11		Jun-11	
	L\$	%	L\$	%	L\$	%	L\$	%	L\$	%	L\$	%
<b>1. Agriculture</b>	<b>463,032</b>	<b>3.5</b>	<b>515,489</b>	<b>3.8</b>	<b>547,500</b>	<b>4.0</b>	<b>464,411</b>	<b>3.3</b>	<b>488,592.0</b>	<b>3.4</b>	<b>517,277.0</b>	<b>3.6</b>
1.1 Rubber	123,505	0.9	128,202	0.9	146,961	1.1	118,473	0.8	126,425.0	0.9	98,113.0	0.7
1.2 Forestry	102,476	0.8	116,021	0.9	151,503	1.1	131,393	0.9	127,195.0	0.9	164,424.0	1.1
1.3 Fishery	136,228	1.0	165,525	1.2	128,592	0.9	126,658	0.9	151,742.5	1.1	167,462.0	1.2
1.4 Others	100,824	0.8	105,741	0.8	120,444	0.9	87,889	0.6	83,229.5	0.6	87,278.0	0.6
<b>2. Mining &amp; Quarrying</b>	<b>2,766</b>	<b>0.0</b>	<b>12,944</b>	<b>0.1</b>	<b>53,003</b>	<b>0.4</b>	<b>55,395</b>	<b>0.4</b>	<b>56,265.0</b>	<b>0.4</b>	<b>49,061.0</b>	<b>0.3</b>
2.1 Iron Ore	-	-	-	-	-	-	-	-	-	-	1,173.0	0.0
2.2 Quarrying	2,766	0.0	12,944	0.1	53,003	0.4	55,395	0.4	56,265.0	0.4	47,888.0	0.3
<b>3. Manufacturing</b>	<b>762,040</b>	<b>5.8</b>	<b>186,317</b>	<b>1.4</b>	<b>202,008</b>	<b>1.5</b>	<b>351,600</b>	<b>2.5</b>	<b>352,759.5</b>	<b>2.5</b>	<b>305,190.0</b>	<b>2.1</b>
<b>4. Construction</b>	<b>1,391,797</b>	<b>10.6</b>	<b>1,423,017</b>	<b>10.5</b>	<b>1,540,369</b>	<b>11.2</b>	<b>1,471,530</b>	<b>10.5</b>	<b>1,518,132.0</b>	<b>10.7</b>	<b>1,585,257.0</b>	<b>11.1</b>
4.1 Mortgage Loans	178,278	1.4	202,300	1.5	213,624	1.6	215,108	1.5	214,310.0	1.5	141,985.0	1.0
4.2 Home Improvement	429,328	3.3	421,288	3.1	424,128	3.1	499,503	3.6	497,110.0	3.5	349,723.0	2.4
4.3 Others	784,192	5.9	799,429	5.9	902,617	6.6	756,920	5.4	806,712.0	5.7	1,093,549.0	7.6
<b>5. Trans., Storage &amp; Comm.</b>	<b>3,009,794</b>	<b>22.8</b>	<b>1,960,634</b>	<b>14.5</b>	<b>1,957,403</b>	<b>14.2</b>	<b>1,435,831</b>	<b>10.2</b>	<b>1,396,654.0</b>	<b>9.8</b>	<b>1,457,491.0</b>	<b>10.2</b>
5.1 Transportation	2,157,175	16.4	1,088,765	8.0	1,091,462	7.9	712,772	5.1	715,282.5	5.0	703,656.0	4.9
5.2 Storage	0.0	0.0	0.0	0.0	0.0	0.0	0.0	0.0	-	-	-	-
5.3 Communication	852,619	6.5	871,869	6.4	865,941	6.3	723,059	5.2	681,371.5	4.8	753,835.0	5.3
<b>6. Trade, Hotel &amp; Rest.</b>	<b>4,079,018</b>	<b>30.9</b>	<b>5,196,721</b>	<b>38.3</b>	<b>5,198,610</b>	<b>37.8</b>	<b>5,733,106</b>	<b>40.9</b>	<b>5,880,258.0</b>	<b>41.3</b>	<b>5,679,708.0</b>	<b>39.6</b>
6.1 Diamond trade	14,718	0.1	14,739	0.1	24,552	0.2	19,793	0.1	19,502.5	0.1	20,732.0	0.1
6.2 Other trade	3,747,631	28.4	4,863,513	35.9	4,838,041	35.2	5,301,089	37.8	5,461,219.0	38.4	5,263,696.0	36.7
6.3 Hotels	298,650	2.3	299,498	2.2	315,958	2.3	391,595	2.8	378,617.0	2.7	374,950.0	2.6
6.4 Restaurants	18,020	0.1	18,971	0.1	20,059	0.1	20,630	0.1	20,919.5	0.1	20,330.0	0.1
<b>7. Others</b>	<b>3,479,460</b>	<b>26.4</b>	<b>4,269,326</b>	<b>31.5</b>	<b>4,258,280</b>	<b>31.0</b>	<b>4,513,330</b>	<b>32.2</b>	<b>4,542,854.7</b>	<b>31.9</b>	<b>4,741,943.6</b>	<b>33.1</b>
7.1 Services	1,252,654	9.5	1,020,960	7.5	1,483,391	10.8	1,053,793	7.5	1,038,859.0	7.3	1,066,688.0	7.4
7.2 Personal	1,939,409	14.7	3,012,698	22.2	2,586,914	18.8	3,036,923	21.7	3,087,295.0	21.7	3,254,737.0	22.7
7.3 GOL	92,016	0.7	67,924	0.5	67,693	0.5	68,161	0.5	68,150.0	0.5	68,912.0	0.5
7.4 Central Bank of Liberia	0	0.0	-	0.0	0	0.0	-	0.0	-	-	-	-
7.5 Public Corporations	-	0.0	-	0.0	-	0.0	171,028	1.2	170,955.0	1.2	179,288.0	1.3
7.6 Others	195,381	1.5	167,744	1.2	120,282	0.9	183,426	1.3	177,595.7	1.2	172,318.6	1.2
<b>TOTAL</b>	<b>13,187,905.05</b>	<b>100</b>	<b>13,564,446.09</b>	<b>100</b>	<b>13,757,173.28</b>	<b>100</b>	<b>14,025,201.40</b>	<b>100</b>	<b>14,235,515</b>	<b>100</b>	<b>14,335,928</b>	<b>100.0</b>

*Source : Central Bank of Liberia, Monrovia, Liberia.*

## MONEY AND BANKING

CENTRAL BANK OF LIBERIA

**1.4b: Commercial Banks' Loans By Economic Sector - 2011- Continued***Thousands of Liberian Dollars*

Sector	Jul-11		Aug-11		Sep-11		Oct-11		Nov-11		Dec-11	
	L\$	%	L\$	%	L\$	%	L\$	%	L\$	%	L\$	%
<b>1. Agriculture</b>	<b>527,459.0</b>	<b>3.7</b>	<b>523,661.5</b>	<b>3.6</b>	<b>514,759</b>	<b>3.4</b>	<b>497,098</b>	<b>3.3</b>	<b>488,026</b>	<b>3.2</b>	<b>748,330</b>	<b>4.6</b>
1.1 Rubber	96,905.0	0.7	135,535.0	0.9	97,401	0.7	99,273	0.7	95,023	0.6	132,458	0.8
1.2 Forestry	202,305.0	1.4	134,735.0	0.9	141,152	0.9	166,747	1.1	128,168	0.8	125,826	0.8
1.3 Fishery	152,250.0	1.1	126,802.5	0.9	200,736	1.3	66,456	0.4	112,756	0.7	192,425	1.2
1.4 Others	75,999.0	0.5	126,589.0	0.9	75,470	0.5	164,622	1.1	152,080	1.0	297,622	1.8
<b>2. Mining &amp; Quarrying</b>	<b>54,960.0</b>	<b>0.4</b>	<b>36,037.5</b>	<b>0.2</b>	<b>66,965</b>	<b>0.4</b>	<b>127,445</b>	<b>0.8</b>	<b>144,006</b>	<b>0.9</b>	<b>139,568</b>	<b>0.9</b>
2.1 Iron Ore	5.00	0.00	-	-	-	-	-	-	8,795	0.1	8,990.00	0.10
2.2 Quarrying	54,955.0	0.4	36,037.5	0.2	66,965	0.4	127,445	0.8	135,212	0.9	130,578	0.8
<b>3. Manufacturing</b>	<b>303,389.5</b>	<b>2.1</b>	<b>310,010.0</b>	<b>2.1</b>	<b>259,416</b>	<b>1.7</b>	<b>271,008</b>	<b>1.8</b>	<b>339,911</b>	<b>2.2</b>	<b>324,053</b>	<b>2.0</b>
<b>4. Construction</b>	<b>1,585,843.0</b>	<b>11.2</b>	<b>1,304,518.0</b>	<b>8.8</b>	<b>1,312,594</b>	<b>8.8</b>	<b>1,361,221</b>	<b>8.9</b>	<b>1,365,694</b>	<b>8.9</b>	<b>1,319,039</b>	<b>8.2</b>
4.1 Mortgage Loans	142,100.0	1.0	103,240.0	0.7	96,408	0.6	92,304	0.6	92,521	0.6	98,238	0.6
4.2 Home Improvement	345,440.0	2.4	124,822.5	0.8	99,576	0.7	90,811	0.6	82,144	0.5	81,466	0.5
4.3 Others	1,098,303.0	7.8	1,076,455.5	7.3	1,116,610	7.5	1,178,106	7.7	1,191,029	7.8	1,139,335	7.0
<b>5. Trans., Storage &amp; Comm.</b>	<b>1,769,227.5</b>	<b>12.5</b>	<b>1,359,086.5</b>	<b>9.2</b>	<b>1,322,107</b>	<b>8.8</b>	<b>1,304,508</b>	<b>8.6</b>	<b>1,326,120</b>	<b>8.6</b>	<b>1,351,589</b>	<b>8.4</b>
5.1 Transportation	1,022,968.5	7.2	666,562.5	4.5	654,054	4.4	629,183	4.1	652,034	4.2	676,770	4.2
5.2 Storage	-	-	-	-	-	-	-	-	-	-	-	0.0
5.3 Communication	746,259.0	5.3	692,524.0	4.7	668,053	4.5	675,325	4.4	674,086	4.4	674,819	4.2
<b>6. Trade, Hotel &amp; Rest.</b>	<b>5,104,382.0</b>	<b>36.1</b>	<b>5,651,218.5</b>	<b>38.3</b>	<b>5,918,395</b>	<b>39.6</b>	<b>6,231,715</b>	<b>40.9</b>	<b>6,304,642</b>	<b>41.1</b>	<b>6,662,164</b>	<b>41.2</b>
6.1 Diamond trade	20,952.5	0.1	21,170.0	0.1	22,176	0.1	21,240	0.1	20,664	0.1	3,536,392	21.9
6.2 Other trade	4,687,663.0	33.1	5,281,419.0	35.8	5,559,882	37.2	5,899,914	38.7	5,983,390	39.0	2,802,802	17.3
6.3 Hotels	374,702.0	2.6	327,120.0	2.2	314,928	2.1	289,368	1.9	279,967	1.8	289,238	1.8
6.4 Restaurants	21,064.5	0.1	21,509.5	0.1	21,409	0.1	21,193	0.1	20,623	0.1	33,732	0.2
<b>7. Others</b>	<b>4,808,624.6</b>	<b>34.0</b>	<b>5,560,386.0</b>	<b>37.7</b>	<b>5,554,867</b>	<b>37.2</b>	<b>5,454,419.52</b>	<b>35.8</b>	<b>5,386,001</b>	<b>35.1</b>	<b>5,625,575</b>	<b>34.8</b>
7.1 Services	2,269,755.0	16.0	2,520,389.1	17.1	2,507,723	16.8	2,587,916	17.0	2,510,567	16.4	2,609,549	16
7.2 Personal	2,112,392.5	14.9	2,225,892.5	15.1	2,326,209	15.6	2,277,777	14.9	2,312,271	15.1	2,414,699	14.9
7.3 GOL	68,440.0	0.5	58,580.0	0.4	57,528	0.4	57,528	0.4	57,129	0.4	57,928	0.4
7.4 Central Bank of Liberia	0	0	0	0	0	0	0	0	0	0	0	0.0
7.5 Public Corporations	178,060.0	1.3	347,884.0	2.4	346,634	2.3	337,098	2.2	297,083	1.9	322,988	2.0
7.6 Others	179,977.0	1.3	407,640.4	2.8	316,773	2.1	194,101	1.3	208,953	1.4	220,412	1.4
<b>TOTAL</b>	<b>14,153,886</b>	<b>100</b>	<b>14,744,918</b>	<b>100.0</b>	<b>14,949,103</b>	<b>100</b>	<b>15,247,415</b>	<b>100</b>	<b>15,354,399</b>	<b>100</b>	<b>16,170,317</b>	<b>100.0</b>

Source : Central Bank of Liberia, Monrovia, Liberia.

## MONEY AND BANKING

CENTRAL BANK OF LIBERIA

## 1.4c: Commercial Banks' Loans By Economic Sector - 2012

Thousands of Liberian Dollars

Sector	Jan-12		Feb-12		Mar-12		Apr-12	
	LS	%	LS	%	LS	%	LS	%
<b>1. Agriculture</b>	<b>703,084</b>	<b>4.4</b>	<b>744,728</b>	<b>4.4</b>	<b>643,111</b>	<b>3.7</b>	<b>766,591</b>	<b>4.4</b>
1.1 Rubber	134,712	0.8	195,706	1.2	132,439	0.8	139,756	0.8
1.2 Forestry	130,206	0.8	170,546	1.0	157,637	0.9	149,184	0.9
1.3 Fishery	155,600	1.0	114,503	0.7	153,990	0.9	154,586	0.9
1.4 Others	282,567	1.8	263,973	1.6	199,045	1.1	323,065	1.9
<b>2. Mining &amp; Quarrying</b>	<b>143,036</b>	<b>0.9</b>	<b>152,575</b>	<b>0.9</b>	<b>231,625</b>	<b>1.3</b>	<b>124,399</b>	<b>0.7</b>
2.1 Iron Ore	9,188	0.1	9,271.00	0.06	86,358	0.5	3,922.00	0.02
2.2 Quarrying	133,849	0.8	143,304	0.9	145,267	0.8	120,477	0.7
<b>3. Manufacturing</b>	<b>334,137</b>	<b>2.1</b>	<b>344,215</b>	<b>2.0</b>	<b>346,370</b>	<b>2.0</b>	<b>342,302</b>	<b>2.0</b>
<b>4. Construction</b>	<b>1,309,317</b>	<b>8.2</b>	<b>1,354,973</b>	<b>8.1</b>	<b>1,319,674</b>	<b>7.6</b>	<b>1,204,641</b>	<b>6.9</b>
4.1 Mortgage Loans	90,332	0.6	135,780	0.8	129,574	0.7	129,056	0.7
4.2 Home Improvement	67,410	0.4	61,489	0.4	60,499	0.3	35,816	0.2
4.3 Others	1,151,576	7.2	1,157,704	6.9	1,129,601	6.5	1,039,769	6.0
<b>5. Trans., Storage &amp; Comm.</b>	<b>1,189,061</b>	<b>7.5</b>	<b>1,666,421</b>	<b>9.9</b>	<b>1,747,678</b>	<b>10.0</b>	<b>1,402,254</b>	<b>8.0</b>
5.1 Transportation	515,689	3.2	1,141,727	6.8	1,094,819	6.3	786,890	4.5
5.2 Storage	-	-	-	0.0	-	-	37.00	0.0
5.3 Communication	673,372	4.2	524,694	3.1	652,859	3.7	615,327	3.5
<b>6. Trade, Hotel &amp; Rest.</b>	<b>6,859,903</b>	<b>43.0</b>	<b>7236069</b>	<b>43.0</b>	<b>7,452,817</b>	<b>42.7</b>	<b>7626558</b>	<b>43.7</b>
6.1 Diamond trade	21,683	0.1	22,630	0.1	24,198	0.1	24,938	0.1
6.2 Other trade	6,609,033	41.4	6,926,278	41.2	6,728,004	38.5	7,297,544	41.8
6.3 Hotels	205,739	1.3	252,056	1.5	663,116	3.8	267,505	1.5
6.4 Restaurants	23,449	0.1	35,105	0.2	37,499	0.2	36,571	0.2
<b>7. Others</b>	<b>5,407,123</b>	<b>33.9</b>	<b>5,315,753</b>	<b>31.6</b>	<b>5,726,158</b>	<b>32.8</b>	<b>5,974,479</b>	<b>34.3</b>
7.1 Services	2,454,404	15.4	2,188,195	13	2,250,095	12.9	2,612,394	15
7.2 Personal	2,326,243	14.6	2,473,726	14.7	2,612,638	15.0	2,550,893	14.6
7.3 GOL	55,206	0.3	55,197	0.3	55,881	0.3	56,179	0.3
7.4 Central Bank of Liberia	0	0	0	0.0	0	0	0	0.0
7.5 Public Corporations	370,955	2.3	373,122	2.2	414,765	2.4	413,828	2.4
7.6 Others	200,317	1.3	225,513	1.3	392,779	2.2	341,185	2.0
<b>TOTAL</b>	<b>15,945,661</b>	<b>100</b>	<b>16,814,734</b>	<b>100.0</b>	<b>17,467,432</b>	<b>100</b>	<b>17,441,223</b>	<b>100.0</b>

Source : Central Bank of Liberia, Monrovia, Liberia.



**MONEY AND BANKING**

CENTRAL BANK OF LIBERIA

**1.5: Commercial Banks' Interest Rates: 2010-2012**

	Jan-10	Feb-10	March-10	April-10	May-10	Jun-10
Average Lending Rate	14.10	14.16	14.17	14.23	14.58	14.17
Average Personal Loan Rate	14.46	14.54	14.46	14.53	14.48	14.45
Average Mortgage Rate	14.50	14.00	14.47	14.50	14.31	14.28
Average Time Deposit Rate	4.30	4.20	3.90	4.00	4.00	4.20
Average Savings Rate	2.00	2.00	2.00	2.00	2.01	2.19
Average Rate on CDs	3.00	3.00	3.00	3.00	3.00	3.00

	Jul-10	Aug-10	Sep-10	Oct-10	Nov-10	Dec-10
Average Lending Rate	14.34	14.15	14.40	14.27	14.17	14.17
Average Personal Loan Rate	14.38	13.65	14.42	14.51	14.12	14.15
Average Mortgage Rate	14.32	14.00	14.28	14.27	14.23	14.19
Average Time Deposit Rate	4.10	3.00	2.90	2.50	2.50	2.90
Average Savings Rate	2.21	2.44	2.00	2.00	2.00	2.01
Average Rate on CDs	3.00	3.00	3.00	3.00	3.00	3.00

	Jan-11	Feb-11	Mar-11	Apr-11	May-11	Jun-11
Average Lending Rate	14.62	13.52	13.39	13.50	13.53	13.64
Average Personal Loan Rate	15.38	15.38	15.17	14.60	10.10	14.68
Average Mortgage Rate	14.00	12.47	12.47	14.66	14.63	15.00
Average Time Deposit Rate	2.90	3.30	2.60	2.50	2.90	2.90
Average Savings Rate	2.01	2.02	2.02	2.01	2.08	2.01
Average Rate on CDs	3.00	3.00	3.00	2.00	3.00	2.50

	Jul-11	Aug-11	Sep-11	Oct-11	Nov-11	Dec-11
Average Lending Rate	13.47	13.80	13.80	14.01	13.88	13.85
Average Personal Loan Rate	10.99	14.52	14.44	10.74	10.83	11.02
Average Mortgage Rate	14.73	14.71	15.00	14.86	14.17	14.03
Average Time Deposit Rate	3.10	3.20	2.70	3.30	3.30	3.70
Average Savings Rate	2.01	2.01	2.01	2.10	2.00	2.02
Average Rate on CDs	2.50	3.00	3.00	3.00	3.00	3.00

	Jan-12	Feb-12	Mar-12	Apr-12
Average Lending Rate	13.42	13.38	13.26	13.89
Average Personal Loan Rate	11.02	14.02	13.90	14.70
Average Mortgage Rate	14.66	14.14	15.00	13.41
Average Time Deposit Rate	3.40	3.30	3.80	4.10
Average Savings Rate	2.00	2.02	2.02	2.00
Average Rate on CDs	2.50	3.00	2.00	2.50

Note: CDs-Certificate of Deposits

Source : Central Bank of Liberia, Monrovia, Liberia.

MONEY AND BANKING

CENTRAL BANK OF LIBERIA

**1.6a: Liberian Dollar Exchange Rates - Period Averages: 2010-2012**  
(Liberian dollar per US dollar)

Period	Large bills <sup>1</sup>		
	Buy	Sell	Middle <sup>2</sup>
<b>2010</b>			
Jan	70.83	71.83	71.33
Feb	71.25	72.31	71.78
Mar	71.09	72.09	71.59
Apr	70.21	71.21	70.71
May	70.58	71.58	71.08
Jun	71.19	72.15	71.67
Jul	71.81	72.76	72.29
Aug	72.00	73.00	72.50
Sep	71.35	72.35	71.85
Oct	71.50	72.54	72.02
Nov	69.35	70.31	69.83
Dec	69.72	70.67	70.19
Quarter 1	71.06	72.08	71.57
Quarter 2	70.66	71.65	71.15
Quarter 3	71.72	72.70	72.21
Quarter 4	70.19	71.17	70.68
<b>2011</b>			
Jan	71.79	72.75	72.27
Feb	71.96	72.60	72.28
March	71.61	72.31	71.96
April	71.54	72.21	71.88
May	72.00	72.98	72.49
June	72.10	73.10	72.60
July	72.35	73.33	72.84
Aug	72.02	73.00	72.51
Sep	71.58	72.58	72.08
Oct	71.88	72.69	72.29
Nov	71.10	72.10	71.60
Dec	71.43	72.43	71.93
Quarter 1	71.79	72.55	72.17
Quarter 2	71.88	72.76	72.32
Quarter 3	71.98	72.97	72.48
Quarter 4	71.47	72.41	71.94
<b>2012</b>			
Jan	72.44	73.40	72.92
Feb	73.00	74.00	73.50
Mar	73.11	74.11	73.61
Apr	73.5	74.5	74.00
Quarter 1	72.85	73.84	73.34

<sup>2</sup>Average of buying and selling rates.

Source: Central Bank of Liberia, Monrovia, Liberia.

**MONEY AND BANKING**

CENTRAL BANK OF LIBERIA

**1.7: Liberian Dollar Exchange Rates - End of Period: 2010 - 2012**

*(Liberian dollars per US dollar)*

Months	2010	2011	2012
Jan	72.00	72.50	73.50
Feb	72.50	72.25	73.50
Mar	71.50	72.00	74.00
Apr	71.50	72.50	74.00
May	71.50	72.50	
Jun	72.25	73.00	
Jul	72.50	72.50	
Aug	72.50	72.50	
Sep	72.50	72.00	
Oct	71.75	72.00	
Nov	69.50	71.50	
Dec	71.75	72.50	

Source : Central Bank of Liberia, Monrovia, Liberia.

## MONEY AND BANKING

CENTRAL BANK OF LIBERIA

**1.8: Liberian Dollar Exchange Rates March-April, 2012**  
(Liberian dollar per US dollar)

Period	Large bills <sup>1</sup>			Period	Large bills <sup>1</sup>		
	Buy	Sell	Middle <sup>2</sup>		Buy	Sell	Middle <sup>2</sup>
<b>Mar</b>				<b>Apr</b>			
1	73.00	74.00	73.50	2	73.50	74.50	74.00
2	73.00	74.00	73.50	3	73.50	74.50	74.00
3	73.00	74.00	73.50	4	73.50	74.50	74.00
5	73.00	74.00	73.50	5	73.50	74.50	74.00
6	73.00	74.00	73.50	6	73.50	74.50	74.00
7	73.00	74.00	73.50	7	73.50	74.50	74.00
8	73.00	74.00	73.50	9	73.50	74.50	74.00
9	73.00	74.00	73.50	10	73.50	74.50	74.00
10	73.50	74.50	74.00	11	73.50	74.50	74.00
12	73.00	74.00	73.50	12	73.50	74.50	74.00
13	73.00	74.00	73.50	13	73.50	74.50	74.00
14	73.50	74.50	74.00	14	73.50	74.50	74.00
15	73.00	74.00	73.50	16	73.50	74.50	74.00
16	73.00	74.00	73.50	17	73.50	74.50	74.00
17	73.00	74.00	73.50	18	73.50	74.50	74.00
19	73.00	74.00	73.50	19	73.50	74.50	74.00
20	73.00	74.00	73.50	20	73.50	74.50	74.00
21	73.00	74.00	73.50	21	73.50	74.50	74.00
22	73.00	74.00	73.50	23	73.50	74.50	74.00
23	73.00	74.00	73.50	24	73.50	74.50	74.00
24	73.00	74.00	73.50	25	73.50	74.50	74.00
26	73.00	74.00	73.50	26	73.50	74.50	74.00
27	73.00	74.00	73.50	27	73.50	74.50	74.00
28	73.50	74.50	74.00	28	73.50	74.50	74.00
29	73.50	74.50	74.00	30	73.50	74.50	74.00
30	73.50	74.50	74.00				
31	73.50	74.50	74.00				
<b>Average</b>	<b>73.11</b>	<b>74.11</b>	<b>73.61</b>		<b>73.50</b>	<b>74.50</b>	<b>74.00</b>

1. US dollar bank notes of denominations 5 and higher.

2. Average of buying and selling rates.

Source: Central Bank of Liberia, Monrovia, Liberia.

**MONEY AND BANKING**

CENTRAL BANK OF LIBERIA

**1.9: Commercial Banks' Inflows and Outflows: 2010 - Feb, 2012**

*(Thousands of United States Dollars)*

**Commercial Banks' Inflows and Outflows - 2010**

	<b>Jan-10</b>	<b>Feb-10</b>	<b>March-10</b>	<b>April-10</b>	<b>May-10</b>	<b>June-10</b>	<b>Jan-Jun Total</b>
Inflows	76,415	72,640	85,774	81,936	76,878	69,171	<b>462,814</b>
Outflows	52,355	97,548	78,758	76,380	85,615	86,615	<b>477,271</b>

	<b>Jul-10</b>	<b>Aug-10</b>	<b>Sep-10</b>	<b>Oct-10</b>	<b>Nov-10</b>	<b>Dec-10</b>	<b>Jul-Dec Total</b>	<b>Grand Total</b>
Inflows	72,052	86,136	78,694	85,750	80,414	122,317	<b>525,363</b>	<b>988,177</b>
Outflows	92,791	88,455	90,075	75,237	71,786	98,292	<b>516,636</b>	<b>993,907</b>

**Commercial Banks' Inflows and Outflows - 2011**

	<b>Jan-11</b>	<b>Feb-11</b>	<b>Mar-11</b>	<b>Apr-11</b>	<b>May-11</b>	<b>Jun-11</b>	<b>Jan-Jun Total</b>
Inflows	75,593	104,288	94,972	80,030	137,596	125,148	<b>617,627</b>
Outflows	103,536	110,764	112,269	95,329	134,447	140,751	<b>697,096</b>

	<b>Jul-11</b>	<b>Aug-11</b>	<b>Sep-11</b>	<b>Oct-11</b>	<b>Nov-11</b>	<b>Dec-11</b>	<b>Jul-Dec Total</b>	<b>Grand Total</b>
Inflows	73,234	104,986	107,089	146,420	88,806	117,145	<b>637,680</b>	<b>1,255,307</b>
Outflows	101,401	123,631	117,280	110,379	89,970	139,590	<b>682,251</b>	<b>1,379,347</b>

**Commercial Banks' Inflows and Outflows - 2012**

	<b>Jan-11</b>	<b>Feb-11</b>	<b>Mar-11</b>	<b>Apr-11</b>
Inflows	137,778	123,231	105,676	89,987
Outflows	89,128	95,314	96,358	107,563

*Source : Central Bank of Liberia, Monrovia, Liberia.*

## MONEY AND BANKING

## 1.10a: Central Bank of Liberia Fx Auction -2010

Auction No.	Date	FX Offered for sale by CBL (US\$)	Auction Rate L\$/US	Total Purchased US\$	No. of Accepted Bids	No. of Rejected Bids	Value of Rejected Bids (US\$)	Over/(Under) Subscription (US\$)	Total Value of Bids Submitted by Participating Banks/FX Bureaux (US\$)
Special Window	4-Jan-10	600,000.00	68	600,000.00	-	-	-	-	600,000.00
189	6-Jan-10	1,700,000.00	69.0000	1,700,000.00	25	1	29,000	(29,000)	1,729,000.00
190	13-Jan-10	1,500,000.00	70.00	1,500,000.00	26	1	209,456.04	(209,456.04)	1,709,456.04
191	20-Jan-10	750,000.00	70.50	750,000.00	18	2	353,000.00	(353,000.00)	1,103,000.00
192	27-Jan-10	500,000.00	71.50	500,000.00	13	11	658,438.94	(658,438.94)	1,158,438.94
193	3-Feb-10	750,000.00	71.60	750,000.00	17	5	442,169.68	(442,169.68)	1,192,169.68
194	10-Feb-10	750,000.00	71.7020	750,000.00	15	2	231,755.88	(231,755.88)	981,755.88
195	17-Feb-10	1,500,000.00	71.00	1,149,995.97	17	-	-	350,004.03	1,149,995.97
196	24-Feb-10	1,500,000.00	71.00	1,037,500.00	12	-	175,000.00	287,500.00	1,212,500.00
197	3-Mar-10	2,000,000.00	71.00	2,000,000.00	22	4	505,596.92	(505,596.92)	2,505,596.92
198	11-Mar-10	2,500,000.00	70.75	1,455,000.00	15	1	50,000.00	995,000.00	1,505,000.00
199	17-Mar-10	2,500,000.00	70.60	1,475,000.00	15	-	-	1,025,000.00	1,475,000.00
Special Window	19-Mar-10	1,000,000.00	71.00	1,000,000.00	-	-	-	-	1,000,000.00
200	24-Mar-10	1,500,000.00	70.50	1,267,000.00	18	-	-	233,000.00	1,267,000.00
Special Window	26-Mar-10	233,000.00	71.00	233,000.00	0	-	-	-	233,000.00
201	31-Mar-10	1,500,000.00	70.50	1,481,338.02	14	-	-	18,661.98	1,481,338.02
Special Window	2-Apr-10	500,000.00	71.00	500,000.00	-	-	-	-	500,000.00
Special Window	5-Apr-10	374,771.73	70.00	374,771.73	-	-	-	-	374,771.73
202	7-Apr-10	1,500,000.00	70.00	1,125,228.27	16	-	-	374,771.73	1,125,228.27
203	14-Apr-10	1,430,000.00	70.00	1,430,000.00	16	-	-	-	1,430,000.00
204	21-Apr-10	1,500,000.00	70.00	1,500,000.00	13	-	-	70,000.00	1,500,000.00
205	28-Apr-10	1,000,000.00	69.9900	552,415.03	12	-	-	447,585.00	552,415.00
Special Window	29-Apr-10	447,584.97	70.0000	447,584.97	-	-	-	-	447,584.97
206	5-May-10	500,000.00	70.2000	500,000.00	11	3	305,000.00	(305,000.00)	805,000.00
207	12-May-10	500,000.00	70.4000	500,000.00	19	4	444,000.00	(444,000.00)	944,000.00
208	26-May-10	500,000.00	70.9000	500,000.00	19	4	360,850.00	(360,850.00)	860,850.00
209	2-Jun-10	500,000.00	71.6000	500,000.00	10	13	522,000.00	(522,000.00)	1,022,000.00
210	9-Jun-10	500,000.00	71.8880	500,000.00	9	11	671,500.00	(671,500.00)	1,171,500.00
211	16-Jun-10	500,000.00	71.9999	500,000.00	9	9	520,500.00	(520,500.00)	1,020,500.00
212	23-Jun-10	500,000.00	72.2711	500,000.00	13	11	608,902.74	(608,902.74)	1,108,902.74
213	30-Jun-10	1,000,000.00	72.4000	1,000,000.00	26	8	719,240.00	(719,240.00)	1,719,240.00
<b>Total</b>		<b>32,035,356.70</b>		<b>28,078,833.99</b>	<b>400</b>	<b>90</b>	<b>6,806,410.20</b>	<b>(2,779,887.46)</b>	<b>34,885,244.16</b>

Source : Central Bank of Liberia, Monrovia, Liberia.

## MONEY AND BANKING

## 1.10a: Central Bank of Liberia Fx Auction -2010 (continued)

Auction No.	Date	FX Offered for sale by CBL (US\$)	Auction Rate L\$/US	Total Purchased US\$	No. of Accepted Bids	No. of Rejected Bids	Value of Rejected Bids (US\$)	Over/(Under) Subscription (US\$)	Total Value of Bids Submitted by Participating Banks/FX Bureaux (US\$)
214	7-Jul-10	1,000,000.00	72.1999	1,000,000.00	17	3	392,885.00	(392,885.00)	1,392,885.00
215	14-Jul-10	500,000.00	72.4000	500,000.00	12	9	459,127.20	(459,127.00)	959,127.00
216	21-Jul-10	500,000.00	72.5999	500,000.00	10	7	350,000.00	(350,000.00)	850,000.00
217	28-Jul-10	500,000.00	72.7000	500,000.00	12	11	467,000.00	(467,000.00)	967,000.00
218	4-Aug-10	500,000.00	72.8999	500,000.00	10	8	320,000.00	(320,000.00)	820,000.00
219	11-Aug-10	750,000.00	72.6000	750,000.00	12	5	250,000.00	(110,980.00)	860,980.00
220	18-Aug-10	750,000.00	71.9999	300,000.00	6	15	728,250.00	(278,250.00)	1,028,250.00
221	25-Aug-10	750,000.00	71.7500	750,000.00	18	3	253,350.00	(253,350.00)	1,003,350.00
222	1-Sep-10	600,000.00	71.0000	600,000.00	9	10	434,000.00	(434,000.00)	1,034,000.00
223	8-Sep-10	500,000.00	71.2800	500,000.00	9	12	557,500.00	(557,500.00)	1,057,500.00
224	15-Sep-10	500,000.00	71.5000	500,000.00	13	3	210,000.00	(210,000.00)	710,000.00
225	22-Sep-10	500,000.00	71.8111	500,000.00	11	11	444,000.00	(444,000.00)	944,000.00
226	29-Sep-10	500,000.00	72.0000	500,000.00	15	5	350,000.00	(350,000.00)	850,000.00
227	6-Oct-10	750,000.00	71.0000	750,000.00	17	-	10,990.00	(10,990.00)	760,990.00
228	13-Oct-10	750,000.00	71.3310	750,000.00	12	6	268,500.00	(268,500.00)	1,018,500.00
229	20-Oct-10	750,000.00	71.6999	750,000.00	11	8	388,680.00	(388,680.00)	1,138,680.00
230	27-Oct-10	500,000.00	71.8500	500,000.00	11	11	607,105.00	(607,105.00)	1,107,105.00
231	3-Nov-10	500,000.00	71.8000	500,000.00	10	7	260,485.00	(260,485.00)	760,485.00
232	10-Nov-10	500,000.00	69.5000	500,000.00	13	1	50,000.00	(106,930.00)	606,930.00
233	17-Nov-10	500,000.00	71.8000	500,000.00	10	7	260,485.00	(260,485.00)	760,485.00
234	24-Nov-10	500,000.00	68.5000	500,000.00	13	1	50,000.00	(116,000.00)	616,000.00
235	1-Dec-10	500,000.00	69.0000	500,000.00	11	8	404,045.00	(404,045.00)	904,045.00
236	8-Dec-10	500,000.00	69.0000	500,000.00	11	3	195,000.00	(195,000.00)	695,000.00
237	15-Dec-10	500,000.00	69.8000	500,000.00	13	4	229,970.00	(229,970.00)	729,970.00
238	22-Dec-10	1,000,000.00	70.5000	1,000,000.00	15	-	760,000.00	240,000.00	760,000.00
239	29-Dec-10	1,000,000.00	70.9500	1,000,000.00	14	1	50,000.00	(465,000.00)	1,465,000.00
<b>Total</b>		<b>16,100,000.00</b>		<b>15,650,000.00</b>	<b>315.00</b>	<b>159.00</b>	<b>8,751,372.20</b>	<b>(7,700,282.00)</b>	<b>23,800,282.00</b>

Source : Central Bank of Liberia, Monrovia, Liberia.

## MONEY AND BANKING

## 1.10b: Central Bank of Liberia Fx Auction - 2011

Auction No.	Date	FX Offered for sale by CBL (US\$)	Auction Rate L\$/US	Total Purchased US\$	No. of Accepted Bids	No. of Rejected Bids	Value of Rejected Bids (US\$)	Over/(Under) Subscription (US\$)	Total Value of Bids Submitted by Participating Banks/FX Bureaux (US\$)
240	5-Jan-11	1,000,000.00	71.4990	1,000,000.00	15	2	100,000.00	(535,000.00)	1,535,000.00
241	12-Jan-11	750,000.00	72.0000	750,000.00	15	1	110,000.00	(110,000.00)	860,000.00
242	19-Jan-11	1,000,000.00	72.3500	1,000,000.00	13	1	240,000.00	(240,000.00)	1,240,000.00
243	26-Jan-11	1,000,000.00	72.4000	1,000,000.00	17	1	540,000.00	(540,000.00)	1,540,000.00
244	2-Feb-11	750,000.00	72.7000	750,000.00	11	7	590,730.00	(590,730.00)	1,340,730.00
245	9-Feb-11	750,000.00	72.1000	750,000.00	13	-	-	180,700.00	930,700.00
246	16-Feb-11	750,000.00	71.9000	750,000.00	12	1	50,000.00	260,000.00	1,010,000.00
247	23-Feb-11	500,000.00	72.2000	500,000.00	11	2	100,000.00	(207,000.00)	707,000.00
248	2-Mar-11	500,000.00	71.7500	500,000.00	13	0	-	191,500.00	691,500.00
249	9-Mar-11	400,000.00	71.8599	400,000.00	10	4	260,000.00	260,000.00	660,000.00
250	16-Mar-11	400,000.00	71.9000	400,000.00	10	0	45,000.00	45,000.00	445,000.00
251	23-Mar-11	400,000.00	72.3000	400,000.00	15	6	272,700.00	272,700.00	672,700.00
252	30-Mar-11	400,000.00	72.4500	400,000.00	8	8	315,000.00	315,000.00	715,000.00
253	6-Apr-11	400,000.00	71.9000	400,000.00	9	6	290,000.00	290,000.00	690,000.00
254	13-Apr-11	400,000.00	71.8000	400,000.00	9	8	465,000.00	465,000.00	865,000.00
255	20-Apr-11	400,000.00	71.8500	400,000.00	12	4	385,000.00	385,000.00	785,000.00
256	27-Apr-11	400,000.00	72.0000	400,000.00	13	3	344,240.00	344,240.00	744,240.00
257	4-May-11	500,000.00	72.3500	500,000.00	12	8	419,387.28	419,387.28	919,387.28
258	11-May-11	500,000.00	72.1000	500,000.00	14	0	-	125,189.17	625,189.17
259	18-May-11	500,000.00	72.1000	500,000.00	11	8	-	365,600.00	865,600.00
260	25-May-11	500,000.00	72.2000	500,000.00	13	10	-	457,380.00	957,380.00
261	1-Jun-11	500,000.00	72.2500	500,000.00	12	11	-	414,860.00	914,860.00
262	8-Jun-11	750,000.00	72.3000	750,000.00	18	9	-	401,200.00	1,151,200.00
263	15-Jun-11	750,000.00	72.2000	750,000.00	20	11	46,000.00	519,774.98	1,269,774.98
264	22-Jun-11	750,000.00	72.3250	750,000.00	18	8	190,000.00	575,000.00	1,325,000.00
265	29-Jun-11	1,000,000.00	72.2500	1,000,000.00	27	1	195,000.00	275,000.00	1,275,000.00
<b>Total</b>		<b>15,950,000.00</b>		<b>15,950,000.00</b>	<b>351</b>	<b>120</b>	<b>4,958,057.28</b>	<b>4,339,801.43</b>	<b>24,735,261.43</b>

Source : Central Bank of Liberia, Monrovia, Liberia.



## MONEY AND BANKING

## 1.10b: Central Bank of Liberia Fx Auction - 2011

Auction		FX Offered	Auction	Total	No. of	No. of	Value of	Over/(Under)	Total Value of Bids
No.	Date	for sale by	Rate	Purchased	Accepted	Rejected	Rejected	Subscription	Submitted by
		CBL (US\$)	L\$/US	US\$	Bids	Bids	Bids (US\$)	(US\$)	Participating
									Banks/FX Bureaux (US\$)
266	6-Jul-11	1,000,000.00	72.3500	1,000,000.00	31	6	20,000.00	396,870.00	1,396,870.00
267	13-Jul-11	750,000.00	72.4000	750,000.00	21	3	-	200,000.00	950,000.00
268	20-Jul-11	750,000.00	72.4000	750,000.00	22	8	-	443,000.00	1,193,000.00
269	27-Jul-11	1,000,000.00	72.2500	1,000,000.00	22	-	20,000.00	90,000.00	910,000.00
270	3-Aug-11	600,000.00	72.4500	600,000.00	15	14	20,000.00	596,000.00	1,196,000.00
271	10-Aug-11	600,000.00	72.2000	600,000.00	19	5	-	372,000.00	972,000.00
272	17-Aug-11	500,000.00	72.2000	500,000.00	16	8	161,020.00	540,995.00	1,040,995.00
273	24-Aug-11	500,000.00	72.3500	500,000.00	12	9	100,000.00	415,280.00	915,280.00
274	31-Aug-11	500,000.00	72.2500	500,000.00	15	3	-	290,000.00	790,000.00
275	7-Sep-11	500,000.00	72.2100	500,000.00	13	11	-	447,900.00	947,900.00
276	14-Sep-11	500,000.00	72.2500	500,000.00	14	5	150,000.00	358,055.00	858,055.00
277	21-Sep-11	500,000.00	72.2889	500,000.00	13	13	50,000.00	605,000.00	1,105,000.00
278	28-Sep-11	500,000.00	72.1500	500,000.00	14	2	100,000.00	149,100.00	649,100.00
279	5-Oct-11	500,000.00	72.3500	500,000.00	17	0	500,000.00	433,300.00	933,300.00
280	12-Oct-11	1,000,000.00	72.0765	1,000,000.00	17	0	100,000.00	55,000.00	1,055,000.00
281	19-Oct-11	500,000.00	72.3000	500,000.00	10	6	-	167,500.00	667,500.00
282	26-Oct-11	500,000.00	72.2500	500,000.00	12	4	20,000.00	92,150.00	592,150.00
283	2-Nov-11	500,000.00	71.9000	500,000.00	14	2	0.00	160,000.00	660,000.00
284	9-Nov-11	500,000.00	71.2500	500,000.00	14	1	0.00	67,270.00	567,270.00
285	16-Nov-11	500,000.00	71.6500	500,000.00	13	6	0.00	183,000.00	683,000.00
286	23-Nov-11	500,000.00	71.6999	500,000.00	14	2	0.00	145,000.00	645,000.00
287	30-Nov-11	500,000.00	71.9000	500,000.00	13	7	0.00	322,900.00	822,900.00
288	7-Dec-11	500,000.00	71.8500	500,000.00	14	6	0.00	318,540.00	818,540.00
289	14-Dec-11	500,000.00	71.8000	500,000.00	13	3	0.00	165,425.00	665,425.00
290	21-Dec-11	500,000.00	71.8500	500,000.00	14	1	50,000.00	122,000.00	622,000.00
Special Window	22-Dec-11	8,000,000.00	71.0000	8,000,000.00	0.00	0.00	0.00	0.00	0.00
291	28-Dec-11	500,000.00	71.9889	500,000.00	14	4	50,000.00	242,360.00	742,360.00
<b>Total</b>		<b>23,200,000.00</b>		<b>23,200,000.00</b>	<b>406</b>	<b>129</b>	<b>1,341,020.00</b>	<b>7,378,645.00</b>	<b>22,398,645.00</b>

Source : Central Bank of Liberia, Monrovia, Liberia.

## MONEY AND BANKING

## 1.10c Central Bank of Liberia Fx Auction - 2012

Auction No.	Date	FX Offered for sale by CBL (US\$)	Auction Rate L\$/US	Total Purchased US\$	No. of Accepted Bids	No. of Rejected Bids	Value of Rejected Bids (US\$)	Over/(Under) Subscription (US\$)	Total Value of Bids Submitted by Participating Banks/FX Bureaux (US\$)
292	4-Jan-12	500,000.00	72.2000	500,000.00	16	8	0.00	467,300.00	967,300.00
293	11-Jan-12	750,000.00	72.5000	750,000.00	20	10	0.00	506,340.00	1,256,340.00
294	18-Jan-12	1,000,000.00	72.4990	1,000,000.00	23	0	0.00	213,000.00	1,213,000.00
295	25-Jan-12	1,000,000.00	72.5000	1,000,000.00	29	0	0.00	419,000.00	1,419,000.00
Special Window	25-Jan-12	375,000.00	71.5000	375,000.00					
Special Window	26-Jan-12	125,000.00	72.5000	125,000.00					
296	1-Feb-12	1,500,000.00	72.3000	1,500,000.00	32	0	86,098.13	343,498.13	1,843,498.13
297	8-Feb-12	1,500,000.00	72.4000	1,500,000.00	35	0	0.00	634,834.00	2,134,834.00
298	15-Feb-12	1,500,000.00	72.6000	1,500,000.00	34	7	0.00	1,123,548.21	2,623,548.21
Special Window	21-Feb-12	500,000.00	73.0000	500,000.00					
299	22-Feb-12	1,000,000.00	72.7665	1,000,000.00	29	13	0.00	1,158,667.00	2,158,667.00
300	29-Feb-12	1,000,000.00	73.0000	1,000,000.00	28	15	0.00	1,387,100.00	2,387,100.00
301	7-Mar-12	500,000.00	73.4900	500,000.00	15	23	150,000.00	1,152,200.00	1,652,200.00
302	16-Mar-12	500,000.00	73.5900	500,000.00	16	9	50,000.00	377,000.00	877,000.00
303	21-Mar-12	500,000.00	73.8000	500,000.00	17	19	250,000.00	1,073,200.00	1,573,200.00
304	28-Mar-12	500,000.00	73.9999	500,000.00	13	31	224,492.56	1,422,592.56	1,922,592.56
<b>Total</b>		<b>12,750,000.00</b>		<b>12,750,000.00</b>	<b>307</b>	<b>135</b>	<b>760,590.69</b>	<b>10,278,279.90</b>	<b>22,028,279.90</b>

Source : Central Bank of Liberia, Monrovia, Liberia.

REAL SECTOR

CENTRAL BANK OF LIBERIA

2.1a: Harmonized Consumer Price Index (HCPI) 2010

Function	Weight (%)	Jan-10	Feb-10	Mar-10	Apr-10	May-10	Jun-10
Food & Non-alcoholic Beverages	45.20	171.25	163.66	167.55	165.86	170.26	170.51
Alcoholic Beverages, Tobacco & Narcotics	3.03	134.46	138.92	137.89	138.46	141.56	144.03
Clothing & Footwear	7.75	157.40	155.44	155.14	154.29	153.88	155.83
Housing, Water, Electricity, Gas & other fuels	12.00	117.00	118.65	117.63	118.79	118.56	119.23
Furnishings, Household Equipment & Routine Maintenance of the House	5.25	179.07	179.99	178.87	177.14	176.43	179.29
Health	3.91	104.05	104.05	104.05	104.05	104.05	104.05
Transport	6.11	164.55	165.36	164.55	164.80	166.18	166.18
Communication	1.53	81.76	81.82	81.79	81.68	81.60	81.80
Recreation & Culture	3.85	129.92	130.16	130.06	129.59	129.25	130.10
Education	3.20	100.00	100.00	100.00	100.00	100.00	100.00
Restaurants & Hotels	4.64	251.51	252.52	252.12	256.76	255.30	258.99
Miscellaneous Goods & Services	3.53	135.79	135.20	133.83	132.67	131.84	133.52
<b>General Index</b>	<b>100.00</b>	<b>157.15</b>	<b>154.04</b>	<b>155.44</b>	<b>145.85</b>	<b>156.81</b>	<b>157.64</b>

Function	Weight (%)	Jul-10	Aug-10	Sep-10	Oct-10	Nov-10	Dec-10
Food & Non-alcoholic Beverages	45.20	178.35	182.36	187.70	181.21	179.55	174.20
Alcoholic Beverages, Tobacco & Narcotics	3.03	142.21	140.28	139.90	140.37	144.98	148.16
Clothing & Footwear	7.75	161.38	161.75	160.61	160.91	160.58	161.23
Housing, Water, Electricity, Gas & other fuels	12.00	121.16	121.99	121.87	121.65	121.30	121.02
Furnishings, Household Equipment & Routine Maintenance of the House	5.25	188.07	188.40	187.44	170.36	167.62	169.54
Health	3.91	104.39	104.39	104.39	104.39	104.39	104.05
Transport	6.11	171.88	171.88	171.88	172.15	172.15	174.06
Communication	1.53	86.44	86.47	86.39	86.41	86.13	86.17
Recreation & Culture	3.85	130.43	130.55	130.55	131.22	130.05	130.24
Education	3.20	100.00	100.00	100.00	100.00	100.00	100.00
Restaurants & Hotels	4.64	261.18	261.68	260.17	260.75	255.75	256.49
Miscellaneous Goods & Services	3.53	134.29	135.38	134.54	134.31	130.05	130.37
<b>General Index</b>	<b>100.00</b>	<b>162.83</b>	<b>164.79</b>	<b>166.94</b>	<b>163.19</b>	<b>161.93</b>	<b>159.88</b>

The Harmonized Consumer Price Index (HCPI) is an amalgamation of the Classification of Individual Consumption by Purpose (COICOP), consisting of twelve functions (major groups) together with the Monrovia Consumer Price Index (MCPI) and its weights obtained from the 1964 limited expenditure survey.

The Survey sample comprised wage-earner and clerical-employee households of two or more persons with monthly income not exceeding US\$250.

Sources : Liberia Institute for Statistics & Geo-Information Services (LISGIS) and Central Bank of Liberia (CBL)

REAL SECTOR

CENTRAL BANK OF LIBERIA

**2.1b: Harmonized Consumer Price Index (HCPI) -2011**

Function	Weight (%)	Jan-11	Feb-11	Mar-11	Apr-11	May-11	Jun-11
Food & Non-alcoholic Beverages	45.20	182.11	184.33	181.13	180.83	183.77	189.34
Alcoholic Beverages, Tobacco & Narcotics	3.03	151.75	152.23	152.49	153.59	154.17	156.16
Clothing & Footwear	7.75	164.90	165.00	164.76	167.08	168.16	168.40
Housing, Water, Electricity, Gas & other fuels	12.00	122.33	121.50	122.88	125.47	126.63	126.57
Furnishings, Household Equipment & Routine Maintenance of the House	5.25	172.80	174.43	174.09	174.44	175.44	175.62
Health	3.91	104.05	104.05	104.05	104.05	104.05	104.05
Transport	6.11	174.87	176.23	197.02	198.76	206.76	206.79
Communication	1.53	86.44	86.44	86.40	86.39	86.47	86.48
Recreation & Culture	3.85	131.35	131.36	133.68	137.75	138.07	138.13
Education	3.20	100.00	100.00	100.00	100.00	100.00	100.00
Restaurants & Hotels	4.64	261.33	261.36	261.65	261.37	262.79	266.52
Miscellaneous Goods & Services	3.53	133.31	128.26	128.80	129.59	135.39	135.86
<b>General Index</b>	<b>100.00</b>	<b>164.61</b>	<b>165.53</b>	<b>165.61</b>	<b>166.29</b>	<b>168.69</b>	<b>171.48</b>

Function	Weight (%)	Jul-11	Aug-11	Sep-11	Oct-11	Nov-11	Dec-11
Food & Non-alcoholic Beverages	45.20	206.36	210.09	200.35	207.67	201.93	202.19
Alcoholic Beverages, Tobacco & Narcotics	3.03	155.58	155.44	157.38	157.58	156.92	161.23
Clothing & Footwear	7.75	169.61	169.04	168.24	168.63	167.4	168.77
Housing, Water, Electricity, Gas & other fuels	12.00	128.85	129.56	129.25	129.23	130.35	128.88
Furnishings, Household Equipment & Routine Maintenance of the House	5.25	187.47	187.05	189.98	190.38	189.08	189.7
Health	3.91	104.05	104.05	104.05	104.05	104.05	104.05
Transport	6.11	206.38	206.30	205.3	205.49	204.93	204.82
Communication	1.53	86.51	86.47	86.42	86.44	86.35	86.40
Recreation & Culture	3.85	137.02	136.85	136.62	136.73	136.36	136.54
Education	3.20	100.00	100.00	100.00	100.00	100.00	100.00
Restaurants & Hotels	4.64	267.10	266.32	265.32	265.81	264.20	264.97
Miscellaneous Goods & Services	3.53	135.54	135.03	134.77	132.01	134.32	134.57
<b>General Index</b>	<b>100.00</b>	<b>180.09</b>	<b>181.73</b>	<b>177.31</b>	<b>180.62</b>	<b>177.93</b>	<b>178.19</b>

The Harmonized Consumer Price Index (HCPI) is an amalgamation of the Classification of Individual Consumption by Purpose (COICOP), consisting of twelve functions (major groups) together with the Monrovia Consumer Price Index (MCPI) and its weights obtained from the 1964 limited expenditure survey.

The Survey sample comprised wage-earner and clerical-employee households of two or more persons with monthly income not exceeding US\$250.

Sources : Liberia Institute for Statistics & Geo-Information Services (LISGIS) and Central Bank of Liberia (CBL)

**REAL SECTOR**

CENTRAL BANK OF LIBERIA

**2.1c: Harmonized Consumer Price Index (HCPI) -2012**

Function	Weight (%)	Jan-12	Feb-12	Mar-12	Apr-12
Food & Non-alcoholic Beverages	45.20	203.80	210.05	204.29	202.02
Alcoholic Beverages, Tobacco & Narcotics	3.03	164.84	165.82	159.25	157.96
Clothing & Footwear	7.75	170.57	171.58	171.82	172.52
Housing, Water, Electricity, Gas & other fuels	12.00	130.42	131.30	131.92	130.94
Furnishings, Household Equipment & Routine Maintenance of the House	5.25	186.30	187.36	187.55	187.24
Health	3.91	104.05	104.05	104.05	104.05
Transport	6.11	204.55	205.23	207.02	208.96
Communication	1.53	86.52	86.60	86.60	86.66
Recreation & Culture	3.85	137.07	137.38	137.43	137.64
Education	3.20	100.00	100.00	100.00	100.00
Restaurants & Hotels	4.64	267.28	268.64	268.90	269.81
Miscellaneous Goods & Services	3.53	135.36	136.79	136.94	137.44
<b>General Index</b>	<b>100.00</b>	<b>179.31</b>	<b>182.57</b>	<b>180.00</b>	<b>179.05</b>

*The Harmonized Consumer Price Index (HCPI) is an amalgamation of the Classification of Individual Consumption by Purpose (COICOP), consisting of twelve functions (major groups) together with the Monrovia Consumer Price Index (MCPI) and its weights obtained from the 1964 limited expenditure survey.*

*The Survey sample comprised wage-earner and clerical-employee households of two or more persons with monthly income not exceeding US\$250.*

**Sources :** Liberia Institute for Statistics & Geo-Information Services (LISGIS) and Central Bank of Liberia (CBL)

REAL SECTOR

CENTRAL BANK OF LIBERIA

2.2a: HCPI Inflation Rate - 2010 (Year-on-Year)

Function	Weight (%)	Jan-10	Feb-10	Mar-10	Apr-10	May-10	Jun-10
Food & Non-alcoholic Beverages	45.20	9.37	6.65	10.95	8.68	11.96	1.42
Alcoholic Beverages, Tobacco & Narcotics	3.03	15.34	20.63	11.80	10.83	14.14	12.38
Clothing & Footwear	7.75	11.54	11.86	14.80	16.14	8.13	4.63
Housing, Water, Electricity, Gas & other fuels	12.00	2.62	3.25	2.97	2.88	2.60	2.95
Furnishings, Household Equipment & Routine Maintenance of the House	5.25	23.98	25.19	18.58	15.02	1.05	2.27
Health	3.91	4.05	4.05	0.00	0.00	0.00	0.00
Transport	6.11	3.43	4.30	3.96	4.12	4.62	3.20
Communication	1.53	1.10	1.16	1.06	0.76	0.66	0.29
Recreation & Culture	3.85	4.40	4.56	7.88	3.33	1.64	1.49
Education	3.20	0.00	0.00	0.00	0.00	0.00	0.00
Restaurants & Hotels	4.64	107.10	88.76	88.06	90.58	7.30	5.99
Miscellaneous Goods & Services	3.53	13.49	12.95	13.47	14.57	4.03	1.28
<b>General Rate of Inflation</b>	<b>100.00</b>	<b>12.88</b>	<b>11.45</b>	<b>13.21</b>	<b>11.92</b>	<b>8.01</b>	<b>2.50</b>

Function	Weight (%)	Jul-10	Aug-10	Sep-10	Oct-10	Nov-10	Dec-10
Food & Non-alcoholic Beverages	45.20	4.22	3.49	7.13	7.25	7.73	8.98
Alcoholic Beverages, Tobacco & Narcotics	3.03	7.55	2.37	2.64	5.94	11.43	13.90
Clothing & Footwear	7.75	6.59	5.21	3.79	4.91	8.36	8.85
Housing, Water, Electricity, Gas & other fuels	12.00	2.43	3.34	5.28	3.36	3.74	4.42
Furnishings, Household Equipment & Routine Maintenance of the House	5.25	5.88	4.38	4.23	-4.35	-3.12	-1.90
Health	3.91	0.32	0.32	0.32	0.32	0.32	0.00
Transport	6.11	5.14	5.15	5.15	5.67	4.79	6.31
Communication	1.53	5.77	5.62	5.57	5.73	5.92	5.99
Recreation & Culture	3.85	0.70	0.50	0.12	1.11	1.55	1.72
Education	3.20	0.00	0.00	0.00	0.00	0.00	0.00
Restaurants & Hotels	4.64	5.65	3.20	2.91	3.92	5.05	5.41
Miscellaneous Goods & Services	3.53	0.33	-1.12	-1.55	0.50	0.13	0.43
<b>General Rate of Inflation</b>	<b>100.00</b>	<b>4.18</b>	<b>3.34</b>	<b>5.17</b>	<b>4.89</b>	<b>5.67</b>	<b>6.61</b>

The Harmonized Consumer Price Index (HCPI) is an amalgamation of the Classification of Individual Consumption by Purpose (COICOP), consisting of twelve functions (major groups) together with the Monrovia Consumer Price Index (MCPI) and its weights, obtained from the 1964 limited expenditure survey.

The Survey sample comprised wage-earner and clerical-employee households of two or more persons with monthly income not exceeding US\$250.

Sources : Liberia Institute for Statistics & Geo-Information Services (LISGIS) and the Central Bank of Liberia (CBL)

REAL SECTOR

CENTRAL BANK OF LIBERIA

2.2b: HCPI Inflation Rate - 2011 (Year-on-Year)

Function	Weight (%)	Jan-11	Feb-11	Mar-11	Apr-11	May-11	Jun-11
Food & Non-alcoholic Beverages	45.20	6.34	12.63	8.11	9.03	7.94	11.04
Alcoholic Beverages, Tobacco & Narcotics	3.03	12.86	9.58	10.59	10.92	8.90	8.42
Clothing & Footwear	7.75	4.77	6.15	6.20	8.29	9.28	8.07
Housing, Water, Electricity, Gas & other fuels	12.00	4.56	2.40	4.47	5.62	6.80	6.15
Furnishings, Household Equipment & Routine Maintenance of the House	5.25	-3.50	-3.09	-2.68	-1.52	-0.56	-2.05
Health	3.91	0.00	0.00	0.00	0.00	0.00	0.00
Transport	6.11	6.27	6.57	19.74	20.61	24.42	24.44
Communication	1.53	5.73	5.65	5.64	5.77	5.97	5.72
Recreation & Culture	3.85	1.10	0.92	2.78	6.30	6.82	6.17
Education	3.20	0.00	0.00	0.00	0.00	0.00	0.00
Restaurants & Hotels	4.64	3.91	3.50	3.78	1.79	2.94	2.91
Miscellaneous Goods & Services	3.53	-1.83	-5.13	-3.76	-2.32	2.69	1.75
<b>General Rate of Inflation</b>	<b>100.00</b>	<b>4.74</b>	<b>7.45</b>	<b>6.54</b>	<b>7.39</b>	<b>7.58</b>	<b>8.78</b>

Function	Weight (%)	Jul-11	Aug-11	Sep-11	Oct-11	Nov-11	Dec-11
Food & Non-alcoholic Beverages	45.20	15.71	15.21	6.74	14.60	12.47	16.07
Alcoholic Beverages, Tobacco & Narcotics	3.03	9.40	10.81	12.49	12.26	8.23	8.83
Clothing & Footwear	7.75	5.10	4.51	4.75	4.80	4.25	4.68
Housing, Water, Electricity, Gas & other fuels	12.00	6.34	6.21	6.06	6.23	7.46	6.50
Furnishings, Household Equipment & Routine Maintenance of the House	5.25	-0.31	-0.72	1.36	11.75	12.80	11.89
Health	3.91	-0.32	-0.32	-0.32	-0.32	-0.32	0.00
Transport	6.11	20.08	20.02	19.44	19.37	19.04	17.67
Communication	1.53	0.08	0.00	0.03	0.04	0.26	0.26
Recreation & Culture	3.85	5.05	4.83	4.65	4.20	4.85	4.83
Education	3.20	0.00	0.00	0.00	0.00	0.00	0.00
Restaurants & Hotels	4.64	2.26	1.78	1.98	1.94	3.30	3.30
Miscellaneous Goods & Services	3.53	0.94	-0.26	0.18	-1.72	3.28	3.22
<b>General Rate of Inflation</b>	<b>100.00</b>	<b>10.60</b>	<b>10.27</b>	<b>6.21</b>	<b>10.68</b>	<b>9.88</b>	<b>11.45</b>

The Harmonized Consumer Price Index (HCPI) is an amalgamation of the Classification of Individual Consumption by Purpose (COICOP), consisting of twelve functions (major groups) together with the Monrovia Consumer Price Index (MCPI) and its weights, obtained from the 1964 limited expenditure survey.

The Survey sample comprised wage-earner and clerical-employee households of two or more persons with monthly income not exceeding US\$250.

Sources : Liberia Institute for Statistics & Geo-Information Services (LISGIS) and Central Bank of Liberia (CBL)

**REAL SECTOR**

CENTRAL BANK OF LIBERIA

**2.2c: HCPI Inflation Rate - 2012(Year-on-Year)**

Function	Weight (%)	Jan-12	Feb-12	Mar-12	Apr-12
Food & Non-alcoholic Beverages	45.20	11.91	13.95	12.79	11.72
Alcoholic Beverages, Tobacco & Narcotics	3.03	8.63	8.93	4.43	2.85
Clothing & Footwear	7.75	3.43	3.99	4.28	3.26
Housing, Water, Electricity, Gas & other fuels	12.00	6.61	8.07	7.36	4.36
Furnishings, Household Equipment & Routine Maintenance of the House	5.25	7.81	7.41	7.73	7.34
Health	3.91	0	0	0	0
Transport	6.11	16.97	16.46	5.07	5.13
Communication	1.53	0.1	0.18	0.23	0.32
Recreation & Culture	3.85	4.35	4.58	2.81	-0.08
Education	3.20	0	0	0	0
Restaurants & Hotels	4.64	2.28	2.79	2.77	3.23
Miscellaneous Goods & Services	3.53	1.54	6.65	6.32	6.05
<b>General Rate of Inflation</b>	<b>100.00</b>	<b>8.93</b>	<b>10.3</b>	<b>8.69</b>	<b>7.67</b>

*The Harmonized Consumer Price Index (HCPI) is an amalgamation of the Classification of Individual Consumption by Purpose (COICOP), consisting of twelve functions (major groups) together the Monrovia Consumer Price Index (MCPI) and its weights, obtained from the 1964 limited expenditure survey.*

*The Survey sample comprised wage-earner and clerical-employee households of two or more persons with monthly income not exceeding US\$250.*

*Sources* : Liberia Institute for Statistics & Geo-Information Services (LISGIS) and Central Bank of Liberia (CBL)



**REAL SECTOR**

CENTRAL BANK OF LIBERIA

**2.3a: Key Output Volume - 2010**

Commodity	Unit	Jan-10	Feb-10	March-10	April-10	May-10	June-10	Jan-Jun Total
<b>Agriculture</b>								
Rubber	Mt.	6,387.35	4,020	3,053.40	2,390.60	5,674.00	4,334.40	25,859.30
Cocoa Beans	Mt.	345	693	696.00	720.00	420.00	225.00	3,099.00
Coffee	Mt.	-	-	-	17.00	162.00	162.00	341.00
Round Logs	M <sup>3</sup>	-	-	-	-	-	-	-
Sawn Timber	Pcs.	50,506	57,765	73,508.00	56,215.00	47,959.00	39,861.00	325,814.00
Fish	Kg.	-	-	-	-	-	-	-
<b>Mining</b>								
Gold	Ounces	1,772	1,747	1,893.00	2,654.06	2,050.24	1,588.18	11,704.48
Diamond	Carat	2,291	1,382	1,247.49	1,644.91	1,271.34	1,999.16	9,835.90
<b>Manufacturing</b>								
Cement	Mt.	10,097	7,759	5,283.00	10,121.00	6,929.00	9,204.00	49,393.00
Spirit	Litre	109,091	96,001	101,898.00	72,283.00	74,067.30	78,598.35	531,938.00
Beer	Litre	792,317	413,662	737,246.00	872,191.88	850,896.52	192,616.56	3,858,929.96
Stout	Litre	297,150	120,685	271,363.00	377,839.44	275,164.56	165,488.40	1,507,690.40
Malta	Litre	-	-	88,506.00	178,683.12	-	-	-
Soft Drink	Litre	961,682	806,909	1,124,273.00	1,259,222.40	864,273.60	953,359.20	5,969,719.20
Oil Paint	Gal.	2,400	3,600	2,840.00	4,200.00	5,520.00	4,652.00	23,212.00
Water Paint	Gal.	12,600	20,200	24,750.00	29,125.00	31,920.00	33,650.00	152,245.00
Varnish	Gal.	600	900	710.00	1,050.00	1,380.00	1,163.00	5,803.00
Manoline Hair Grease	Kg.	16,842	6,560	4,704.00	15,834.00	2,679.60	3,360.00	49,980.00
Thinner	Gal.	350	1,000	1,215.00	1,500.00	1,200.00	1,850.00	7,115.00
Rubbing Alcohol	Litre	22,473	44,947	35,957.50	429,782.02	26,473.71	34,429.31	594,062.85
Powder Soap	Kg.	17,897	14,469	14,222.25	-	11,250.75	4,520.25	62,359.25
Chlorox	Litre	62,661	32,032	106,006.50	56,089.92	79,696.96	91,381.26	427,867.76
Nail	Kg.	-	-	-	-	-	-	-
Candle	Kg.	40,845	25,085	66,979.50	48,331.50	54,064.50	41,968.50	277,273.50
Mattresses	Pcs.	8,015	8,623	9,076.00	10,725.00	12,990.00	11,857.00	61,286.00
Finished Water <sup>1</sup>	Gal.	112,144,261	114,185,239	99,883,839.35	130,694,247.20	108,343,202.40	108,345,412.80	673,596,202.57

1: Water from White Plains Treatment Plant

Sources : Lands, Mines & Energy; Commerce & Industry; Forestry Development Authority (FDA); Liberia Produce Marketing Corporation (LPMC) and Liberia Water & Sewer Corporation (LWSC), Monrovia, Liberia

**REAL SECTOR**

CENTRAL BANK OF LIBERIA

**2.3a: Key Output Volume - 2010 (continued)**

Commodity	Unit	Jul-10	Aug-10	Sep-10	Oct-10	Nov-10	Dec-10	Jul-Dec Total	Grand Total
<b>Agriculture</b>									
Rubber	Mt.	6,048.00	4,471.00	6,609.00	6,484.00	8,131.00	4,974.00	36,717.00	62,576.30
Cocoa Beans	Mt.	240.00	428.00	478.00	648.30	964.16	1,255.68	4,014.14	7,113.14
Coffee	Mt.	11.00	-	-	27.30	-	-	38.30	379.30
Round Logs	M <sup>3</sup>	6,021.00	-	-	-	1,230.00	-	7,251.00	7,251.00
Sawn Timber	Pcs.	29,126.00	42,235.00	28,886.00	40,047.00	42,381.00	35,294.00	217,969.00	543,783.00
Fish	Kg.	-	-	-	-	-	-	-	-
<b>Mining</b>									
Gold	Ounces	948.00	2,172.00	2,265.00	1,355.60	1,127.96	1,828.71	9,697.27	21,401.75
Diamond	Carat	1,857.00	1,027.00	1,031.84	4,906.01	144.47	3,216.24	12,182.56	22,018.46
<b>Manufacturing</b>									
Cement	Mt.	5,063.00	3,039.00	4,294.00	4,025.00	3,137.00	2,782.00	22,340.00	71,733.00
Spirit	Litre	86,325.00	74,482.00	74,392.00	75,140.10	65,551.50	93,210.75	469,101.35	1,001,039.35
Beer	Litre	685,461.00	655,010.00	640,272.00	603,015.16	679,754.76	920,246.12	4,183,759.04	8,042,689.00
Stout	Litre	423,633.00	230,012.64	323,991.00	284,225.04	432,202.32	667,069.92	2,361,133.92	3,868,824.32
Malta	Litre	119,964.00	527,844.24	-	99,649.44	84,577.68	29,755.44	861,790.80	861,790.80
Soft Drink	Litre	834,250.00	829,519.20	797,026.00	804,578.40	887,616.00	1,293,091.20	5,446,080.80	11,415,800.00
Oil Paint	Gal.	960.00	2,954.00	880.00	2,600.00	2,260.00	2,440.00	12,094.00	35,306.00
Water Paint	Gal.	9,190.00	10,020.00	7,550.00	16,520.00	10,850.00	20,235.00	74,365.00	226,610.00
Varnish	Gal.	240.00	213.00	220.00	650.00	565.00	610.00	2,498.00	8,301.00
Manoline Hair Grease	Kg.	5,040.00	5,939.00	3,301.00	3,822.00	2,889.60	4,729.20	25,720.80	75,700.80
Thinner	Gal.	750.00	1,600.00	800.00	1,200.00	1,500.00	2,470.00	8,320.00	15,435.00
Rubbing Alcohol	Litre	20,945.00	44,542.00	-	45,171.61	34,339.41	4,899.21	149,897.23	743,960.08
Powder Soap	Kg.	79,042.00	70,171.00	52,434.00	60,443.10	67,882.95	49,560.75	379,533.80	441,893.05
Chlorox	Litre	15,750.00	21,546.00	21,777.00	52,963.51	62,024.80	60,355.61	234,416.91	662,284.67
Nail	Kg.	-	-	-	-	-	-	-	-
Candle	Kg.	41,748.00	51,135.00	44,457.00	53,298.00	52,594.50	58,338.00	301,570.50	578,844.00
Mattresses	Pcs.	13,750.00	11,300.00	9,889.00	7,010.00	7,290.00	11,504.00	60,743.00	122,029.00
Finished Water <sup>1</sup>	Gal.	102,199,432.00	120,634,490.60	110,392,375.01	122,754,200.00	125,225,220.00	153,571,663.00	734,777,380.61	1,408,373,583.18

1: Water from White Plains Treatment Plant

Sources : Lands, Mines & Energy; Commerce & Industry; Forestry Development Authority (FDA); Liberia Produce Marketing Corporation (LPMC) and Liberia Water & Sewer Corporation (LWSC), Monrovia, Liberia

**REAL SECTOR**

CENTRAL BANK OF LIBERIA

**2.3b: Key Output Volume - 2011**

Commodity	Unit	Jan-11	Feb-11	Mar-11	Apr-11	May-11	Jun-11	Jan-June Total
<b>Agriculture</b>								
Rubber	Mt.	7,255.00	19,455.00	521.00	11,813.48	5,481	5,938	50,463.45
Cocoa Beans	Mt.	2,023.00	172.00	3,742.00	3,329.00	5,941	4,106	19,313.00
Coffee	Mt.	-	-	-	-	-	154	154.00
Round Logs	M <sup>3</sup>	10,819.00	2,629.00	3,042.00	6,725.36	2,813	10,803	36,831.36
Sawn Timber	Pcs.	27,228.00	41,540.00	48,464.00	42,968.00	50,002	28,161	238,363.00
Fish	Kg.	-	-	-	-	-	-	-
<b>Mining</b>								
Gold	Ounces	1,556.00	1,127.00	1,237.00	1,595.00	1,577	1,573	8,665.00
Diamond	Carat	2,210.00	2,097.00	3,206.00	558.01	4,686	5,291	18,048.01
<b>Manufacturing</b>								
Cement	Mt.	2,553.00	3,507.00	2,651.00	7,263.00	3,166	9,543	28,683.00
Spirit	Litre	59,544.00	52,832.00	60,873.00	58,704.21	61,647	66,489	360,089.21
Beer	Litre	616,550.00	639,543.00	841,177.00	933,970.16	894,377	955,400	4,881,017.16
Stout	Litre	309,324.00	378,774.00	438,926.00	427,299.84	401,916	492,117	2,448,356.84
Malta	Litre	98,208.00	96,188.00	62,220.00	64,088.64	132,018	101,677	554,400.08
Soft Drink	Litre	1,182,283.00	1,109,477.00	1,237,003.00	1,374,459.84	1,166,695	939,190	7,009,107.64
Oil Paint	Gal.	1,400.00	4,080.00	3,440.00	2,760.00	3,280	1,640	16,600.00
Water Paint	Gal.	13,550.00	27,750.00	19,850.00	25,688.00	14,650	16,200	117,688.00
Varnish	Gal.	350.00	1,020.00	860.00	690.00	820	410	4,150.00
Manoline Hair Grease	Kg.	5,687.00	3,637.00	4,099.00	5,686.80	2,327	3,620	25,057.00
Thinner	Gal.	2,300.00	3,500.00	3,000.00	3,125.00	2200	2500	16,625.00
Rubbing Alcohol	Litre	22,518.00	21,035.00	-	22,518.38	32,946	34,654	133,671.48
Powder Soap	Kg.	37,122.00	48,855.00	15,755.00	37,121.55	41,715	43,406	223,974.65
Chlorox	Litre	77,047.00	67,986.00	42,127.00	106,218.46	132,581	52,964	478,922.94
Nail	Kg.	-	-	-	-	-	-	0.00
Candle	Kg.	43,176.00	49,193.00	32,666.00	59,115.00	37,664	31,574	253,387.00
Mattresses	Pcs.	12,600.00	13,130.00	14,960.00	11,205.00	15,989	12,874	80,758.00
Finished Water <sup>1</sup>	Gal.	178,985,090.50	162,390,947.44	148,029,162.25	150,802,081.28	149,163,690	140,788,206	930,159,177.79

1: Water from White Plains Treatment Plant

Sources : Lands, Mines & Energy; Commerce & Industry; Forestry Development Authority (FDA); Liberia Produce Marketing Corporation (LPMC) and Liberia Water & Sewer Corporation (LWSC), Monrovia, Liberia

**REAL SECTOR**

CENTRAL BANK OF LIBERIA

**2.3b: Key Output Volume - 2011 -Continued**

Commodity	Unit	Jul-11	Aug-11	Sep-11	Oct-11	Nov-11	Dec-11
<b>Agriculture</b>							
Rubber	Mt.	8,567	9,696	3,123	11,163	1,684	8,883
Cocoa Beans	Mt.	1,015	843	2,014	1,077	1,020	1,410
Coffee	Mt.	-	27		na	na	na
Round Logs	M <sup>3</sup>	16,147	2,375	303	9,129	7,024	2,298
Sawn Timber	Pcs.	30,325	21,540	12,412	9,160	10,540	9,200
Fish	Kg.						
<b>Mining</b>							
Gold	Ounces	969	1,329	1,016	443	1,210	1196
Diamond	Carat	4,526	7,849	3,410	3777	1,095	1162
<b>Manufacturing</b>							
Cement	Mt.	7,429	9,557	6,413	6,637	10,306	11,569
Spirit	Litre	52,576	54,104	52,777	54879	52,424	62,541
Beer	Litre	920,658	927,094	700,401	727,354	689,083	1,071,264
Stout	Litre	489,290	489,377	428,670	422,160	504,623	599,386
Malta	Litre	-	203,314	64,350	32,622	67,502	66,306
Soft Drink	Litre	1,100,117	950,998	796,644	1,027,296	1,122,422	1,519,949
Oil Paint	Gal.	3,440	1,200	2,096	2,150	4,865	4,580
Water Paint	Gal.	24,200	21,525	16,150	20,850	25,750	34,085
Varnish	Gal.	860	300	524	430	973	916
Manoline Hair Grease	Kg.	2,495	1,772	1,940	na	3,167	3,360
Thinner	Gal.	1,425	860	495	1800	2,420	2702
Rubbing Alcohol	Litre	-	13,529	24,676	28,361	20,945	-
Powder Soap	Kg.	52,205	47,376	54,203	20,391	27,917	33,022
Chlorox	Litre	8,293	53,440	32,112	52,964	42,339	26,521
Nail	Kg.	-	-	-	-	-	-
Candle	Kg.	43,281	31,479	26,891	42,011	20,979	24,549
Mattresses	Pcs.	9,870	7,917	9,740	10,210	9,835	13,670
Finished Water <sup>1</sup>	Gal.	-	-	-	-	-	-

<sup>1</sup>: Water from White Plains Treatment Plant

Sources : Lands, Mines & Energy; Commerce & Industry; Forestry Development Authority (FDA);  
Liberia Produce Marketing Corporation (LPMC) and Liberia Water & Sewer Corporation (LWSC), Monrovia, Liberia

**REAL SECTOR**

CENTRAL BANK OF LIBERIA

**2.3c: Key Output Volume - 2012**

Commodity	Unit	Jan-12	Feb-12	Mar-12	Apr-12
<b>Agriculture</b>					
Rubber	Mt.	5,766	3,564	12,125	344
Cocoa Beans	Mt.	1,305	1,230	963	672
Coffee	Mt.	-	-	-	38
Round Logs	M <sup>3</sup>	22,509	8,177	14,256	26,027
Sawn Timber	Pcs.	34,632	50,908	7,160	30,110
Fish	Kg.	-	-	-	-
<b>Mining</b>					
Gold	Ounces	1,645	1,458	1,558	2,098
Diamond	Carat	2,856	3,287	3,802	2,644
<b>Manufacturing</b>					
Cement	Mt.	10,662	14,580	12,462	13,322
Spirit	Litre	52,453	53,100	58,243	59,624
Beer	Litre	733,228	721,010	913,481	725,199
Stout	Litre	309,324	378,774	438,926	385,569
Malta	Litre	98,208	96,188	62,220	33,343
Soft Drink	Litre	1,095,732	1,156,334	1,178,100	1,120,637
Oil Paint	Gal.	4,538	3,172	3,040	4,125
Water Paint	Gal.	29,245	20,235	20,627	27,180
Varnish	Gal.	1,134	793	760	1,031
Manoline Hair Grease	Kg.	4,276	1,050	4,696	1,957
Thinner	Gal.	1,745	1,470	875	1,620
Rubbing Alcohol	Litre	20,676	-	11,237	22,473
Powder Soap	Kg.	35,520	68,321	20,718	32,027
Chlorox	Litre	66,238	55,587	55,984	62,131
Nail	Kg.	-	-	-	-
Candle	Kg.	31,574	21,011	31,563	13,640
Mattresses	Pcs.	10,050	9,833	9,970	8,975
Finished Water <sup>1*</sup>	Gal.	68,366,386	59,415,052	52,688,677	199,794,720

1: Water from White Plains Treatment Plant

\* Estimates

Sources : Lands, Mines & Energy; Commerce & Industry; Forestry Development Authority (FDA);

Liberia Produce Marketing Corporation (LPMC) and Liberia Water & Sewer Corporation (LWSC), Monrovia, Liberia

**REAL SECTOR**

CENTRAL BANK OF LIBERIA

**2.4a: Key Output Value - 2010**  
Liberian dollars

Commodity	Unit	Jan-10	Feb-10	Mar-10	Apr-10	May-10	Jun-10	Jan-Jun Total
<b>Agriculture</b>								
Rubber <sup>3*</sup>	Mt.	1,027,906,671	766,577,381	513,626,035	293,995,210	1,226,056,077.00	631,984,627.00	4,460,146,001.00
Cocoa Beans <sup>4</sup>	Mt.	49,217,700.00	99,487,080.00	49,397,100.00	101,822,400.00	59,707,200	32,251,500	391,882,980.00
Coffee <sup>4</sup>	Mt.				2,404,140.00	23,029,920	23,221,080	48,655,140.00
Round Logs <sup>3</sup>	M <sup>3</sup>							-
Sawn Timber <sup>4</sup>	Pcs.	2,088,828	2,380,153	3,157,248	2,384,978	2,045,355	1,690,308	13,746,870.30
Fish <sup>4</sup>	Kg.							-
<b>Mining<sup>4</sup></b>								
Gold	Ounces	109,317,476	103,608,060	115,887,280	162,280,898	134,207,290.26	106,674,033.65	731,975,038.24
Diamond	Carat	37,650,958	44,971,268	29,118,160	535,828,047	28,315,519	48,320,645	724,204,597.62
<b>Manufacturing<sup>4</sup></b>								
Cement	Mt.	128,919,203	99,692,443	67,699,585	128,102,408	88,891,656	117,105,437	630,410,731.14
Spirit	Litre	5,792,275	5,646,600	5,885,275	4,420,275	4,383,875	4,338,900	30,467,200.00
Beer	Litre	97,636,985	54,406,005	91,725,880	107,849,600	107,159,425	26,862,225	485,640,120.00
Stout	Litre	57,028,880	23,161,760	52,079,760	72,514,640	52,809,360	31,760,400	289,354,800.00
Malta	Litre	-	-	12,124,875.00	24,478,685.00	-	-	36,603,560.00
Soft Drink	Litre	52,932,140	54,739,590	68,605,190	67,164,260	60,342,740	53,868,660	357,652,580.00
Oil Paint	Gal.	2,225,496	3,359,304	2,643,103	3,860,766	5,100,701	4,334,315	21,523,684.52
Water Paint	Gal.	5,219,929	8,513,826	10,146,988	11,882,816	13,134,678	13,967,229	62,865,464.83
Varnish	Gal.	556,374	839,826	660,776	965,192	1,275,175	1,083,579	5,380,921.13
Manoline Hair Grease	Kg.	567,074	366,078	386,586	594,759	207261.4612	777653.1849	2,899,411.63
Thinner	Gal.	249,655	717,800	869,819	1,060,650	852,960	1,325,895	5,076,778.50
Rubbing Alcohol	Litre	200,616	205,075	392,385	342,819	312,558	390,835	1,844,288.02
Powder Soap	Kg.	827,428	803,936	927,806	34,695	512,674	42,867	
Chlorox	Litre	2,198,141	994,871	2,493,730	2,254,251	2,700,282	3,382,299	14,023,574.02
Nail	Kg.	-	-	-	-	0	0	-
Candle	Kg.	5,390,051	4,261,938	8,068,193	5,819,361	7,433,111	7,533,783	38,506,436.20
Mattresses	Pcs.	15,884,374.98	19,501,090.63	20,950,036.75	17,077,112.70	20,197,900	20,150,235	113,760,750.03
Finished Water <sup>2</sup>	Gal.	129,642,251	21,187,940	18,991,377	24,550,717	27,814,728	24,120,689	246,307,701.66

1. Water from White Plains Treatment Plant. NB: Production data are collected quarterly.  
 2. Represents Export values  
 3. Represents quantity sold, not quantity produced

Sources : Lands, Mines & Energy; Commerce & Industry; Forestry Development Authority (FDA);  
 Liberia Produce Marketing Corporation (LPMC) and Liberia Water & Sewer Corporation (LWSC), Monrovia, Liberia

**REAL SECTOR**

CENTRAL BANK OF LIBERIA

**2.4a: Key Output Value - 2010 (continued)**

Liberian dollars

Commodity	Unit	Jul-10	Aug-10	Sep-10	Oct-10	Nov-10	Dec-10	Jul-Dec Total	Grand Total
<b>Agriculture</b>									
Rubber <sup>3a</sup>	Mt.	986,975,370	940,520,750	1,167,576,152	1,208,324,192.40	1,199,143,106	1,237,594,993.30	5,753,159,193.30	10,213,305,194.30
Cocoa Beans <sup>4</sup>	Mt.	31,402,776	56,185,296	61,558,968	648.30	964	1,255.68	117,747,132.14	509,630,112.14
Coffee <sup>4</sup>	Mt.	477,114	-	-	27.30	-	-	27.30	48,655,167.30
Round Logs <sup>3</sup>	M <sup>3</sup>	9,274,019	-	-	11,149,677.00	4,983,559	-	16,133,236.00	16,133,236.00
Sawn Timber <sup>4</sup>	Pcs.	1,263,311.12	1,837,223	2,075,459.00	40,047.00	42,381.00	35,294.00	4,030,403.50	17,777,273.80
Fish <sup>4</sup>	Kg.	-	-	-	-	-	-	-	-
<b>Mining<sup>4</sup></b>									
Gold	Ounces	62,766,920.00	146,077,587.08	156,059,323.00	1,355.60	1,127.96	1,828.71	302,141,222.35	1,034,116,260.58
Diamond	Carat	38,241,935	15,561,267	66,738,447	4,906.01	144	3,216.24	82,307,981.02	806,512,578.64
<b>Manufacturing<sup>4</sup></b>									
Cement	Mt.	65,514,764	39,438,623	55,225,778	4,025.00	3,137	2,782.00	94,674,344.50	725,085,075.64
Spirit	Litre	25,042,500	4,986,250	4,785,250	75,140.10	65,552	93,210.75	10,005,402.35	40,472,602.35
Beer	Litre	92,207,250	61,169,290	58,587,785	603,015.16	679,755	920,246.12	121,960,091.04	607,600,211.04
Stout	Litre	72,991,920	48,652,160	53,160,480	284,225.04	432,202	667,069.92	103,196,137.28	392,550,937.28
Malta	Litre	10,166,805	6,581,565	6,162,390	99,649.44	84,578	29,755.44	12,957,937.56	49,561,497.56
Soft Drink	Litre	53,792,695	40,479,550	44,397,575	804,578.40	1,293,091	1,293,091.20	88,267,885.80	445,920,465.80
Oil Paint	Gal.	2,775,705	2,466,334	1,544,545	2,600.00	10,850	2,440.00	4,026,769.00	25,550,453.52
Water Paint	Gal.	7,254,703	6,268,658	5,022,725	16,520.00	10,850	20,235.00	11,338,988.13	74,204,452.96
Varnish	Gal.	693,926	616,584	386,136	650.00	565	610.00	1,004,544.50	6,385,465.63
Manoline Hair Grease	Kg.	721,548,899	477,687,275	525,774.00	3,822.00	2,889.60	4,729.20	1,014,902.08	3,914,313.71
Thinner	Gal.	766,997	1,078,800	746,522	1,200.00	1,500	2,470.00	1,830,492.00	6,907,270.50
Rubbing Alcohol	Litre	143,570	409,091	346,831	45,171.61	34,339	4,899.21	840,331.91	2,684,619.93
Powder Soap	Kg.	4,499,647	4,141,309	4,089,645	60,443.10	67,883	49,560.75	8,408,840.55	8,408,840.55
Chlorox	Litre	2,497,040	2,562,075	2,366,638	52,963.51	62,025	60,355.61	5,104,057.24	19,127,631.25
Nail	Kg.	-	-	-	-	-	-	-	-
Candle	Kg.	8,351,852	7,123,965	6,988,648.00	7,208,722.00	52,594.50	58,338.00	21,432,267.78	59,938,703.97
Mattresses	Pcs.	22,280,815	18,135,265	15,283,836.00	12,286,441.00	7,290.00	11,504.00	45,724,336.28	159,485,086.30
Finished Water <sup>2*</sup>	Gal.	25,442,371	27,532,390	25,237,964.33	20,949,743	23,346,197.09	26,189,803	123,256,097.78	369,563,799.44

1. Water from White Plains Treatment Plant. NB: Production data are collected quarterly.  
 2. Represents Export values  
 3. Represents quantity sold, not quantity produced

Sources : Lands, Mines & Energy; Commerce & Industry; Forestry Development Authority (FDA);  
 Liberia Produce Marketing Corporation (LPMC) and Liberia Water & Sewer Corporation (LWSC), Monrovia, Liberia

**REAL SECTOR**

CENTRAL BANK OF LIBERIA

**2.4b: Key Output Value - 2011**

Liberian dollars

Commodity	Unit	Jan-11	Feb-11	Mar-11	Apr-11	May-11	Jun-11	Jan-Jun Total
<b>Agriculture</b>								
Rubber <sup>3*</sup>	Mt.	1,065,111,275.00	1,896,180,510.00	61,564,658.00	2,717,956,750	1,771,401,160.10	49,214,088.00	7,561,428,440.70
Cocoa Beans <sup>4</sup>	Mt.	366,596,250.00	31,080,400.00	673,242,648.00	599,892,510	956,034,365.00	150,419,940.00	2,777,266,113.00
Coffee <sup>4</sup>	Mt.	-	-	-	-	-	-	-
Round Logs <sup>3</sup>	M <sup>3</sup>	11,149,677.00	4,983,559.00	4,441,356.00	9,823,248	1,029,964	NA	31,427,804.02
Sawn Timber <sup>4</sup>	Pcs.	1,184,418.00	1,801,507.00	2,092,482.00	1,853,066	2,178,073	NA	9,109,546.00
Fish <sup>4</sup>	Kg.	-	-	-	-	-	-	-
<b>Mining<sup>4</sup></b>								
Gold	Ounces	88,911,020.00	84,379,293.00	96,911,491.00	127,497,677	132,079,568.69	133,975,029.41	663,754,078.98
Diamond	Carat	248463206*	58,668,536.00	108,304,038.00	14,167,692	107,521,670.35	178,383,748.09	715,508,890.92
<b>Manufacturing<sup>4</sup></b>								
Cement	Mt.	30,725,355.00	42,078,669.00	31,667,149.00	86,662,697	38,097,554.44	115,008,418.80	344,239,843.28
Spirit	Litre	4,138,250.00	3,705,400.00	3,269,100.00	3,606,975	13,646,525.00	3,646,225.00	32,012,475.00
Beer	Litre	71,932,605.00	97,483,495.00	104,318,560.00	117,647,025	117,513,585.00	126,937,865.00	635,833,135.00
Stout	Litre	54,666,800.00	76,229,520.00	84,276,400.00	82,007,040	77,135,440.00	94,446,720.00	468,761,920.00
Malta	Litre	9,695,880.00	10,536,300.00	10,728,810.00	8,375,220	8,375,220.00	17,252,415.00	64,963,845.00
Soft Drink	Litre	67,338,000.00	70,391,160.00	78,547,650.00	77,154,630	77,154,630.00	69,559,810.00	440,145,880.00
Oil Paint	Gal.	2,465,580.00	3,274,457.00	3,106,542.00	2,727,846	3,269,299.00	1,637,130.00	16,480,854.00
Water Paint	Gal.	6,239,067.00	10,099,197.00	9,062,984.00	11,324,665	6,468,282.70	7,159,474.85	50,353,670.80
Varnish	Gal.	616,395.00	818,614.00	776,635.00	681,962	817,324.75	409,282.50	4,120,212.75
Manoline Hair Grease	Kg.	502,425.00	517,597.08	391,822.20	426,967.20	406,668.90	57,499,200.00	59,744,680.38
Thinner	Gal.	1,660,250.00	2,405,478.00	2,301,065.00	2,470,875	1,754,258.00	1,996,500.00	12,588,426.00
Rubbing Alcohol	Litre	309,031.00	219,551.00	420,426.00	705,538	497,673.00	705,538.14	2,857,757.28
Powder Soap	Kg.	4,625,790.00	3,406,195.00	3,461,636.00	2,804,758	3,322,542.91	5,019,382.50	22,640,304.01
Chlorox	Litre	2,041,056.00	1,986,616.00	1,915,378.00	3,296,021	3,922,470.15	2,437,726.50	15,599,268.11
Nail	Kg.	-	-	-	-	-	-	-
Candle	Kg.	7,850,300.00	10,061,376.00	6,735,456.00	8,729,970	8,094,958.30	7,260,726.00	48,732,786.06
Mattresses	Pcs.	21,366,882.00	25,265,446.00	33,301,257.00	23,213,839	43,104,473.54	32,057,134.76	178,309,031.93
Finished Water <sup>2*</sup>	Gal.	30,312,436.00	27,821,676.00	19,605,862.00	29,384,082	28,323,348.90	27,002,300.08	162,449,704.89

1. Water from White Plains Treatment Plant.

2. Represents Export values

3. Represents quantity sold, not quantity produced

NB: Production data are collected quarterly.

Sources : Lands, Mines & Energy; Commerce & Industry; Forestry Development Authority (FDA);

Liberia Produce Marketing Corporation (LPMC) and Liberia Water & Sewer Corporation (LWSC), Monrovia, Liberia



**REAL SECTOR**

CENTRAL BANK OF LIBERIA

**2.4b: Key Output Value - 2011 (continued)**

Liberian dollars

Commodity	Unit	Jul-11	Aug-11	Sep-11	Oct-11	Nov-11	Dec-11
<b>Agriculture</b>							
Rubber <sup>3*</sup>	Mt.	22,167,717.00	2,362,569,402.00	157,407,583.00	2,606,476,023.00	107,693,632.00	1,314,658,280.00
Cocoa Beans <sup>4</sup>	Mt.	184,831,500.00	152,814,825.00	362,922,800.00	194,640,825.00	182,580,000.00	11,031,724,275.00
Coffee <sup>4</sup>	Mt.	na	3,915,540.00	na	na	na	na
Round Logs <sup>3</sup>	M <sup>3</sup>	30,890,447	16,837,343	480,269	4,474,359.00	11,080,608.00	4,568,490.00
Sawn Timber <sup>4</sup>	Pcs.	1,296,188	937,076	536,794,176	397,305.84	462,822.40	375,474.60
Fish <sup>4</sup>	Kg.	-	-	-	-	-	-
<b>Mining<sup>4</sup></b>							
Gold	Ounces	84,632,239.00	125,316,738.00	101,456,129.00	40,617,896.00	114,004,594.00	111,919,850.00
Diamond	Carat	121,113,483.00	101,656,244.00	58,956,492.00	73,614,279.00	15,606,057.00	27,872,640.00
<b>Manufacturing<sup>4</sup></b>							
Cement	Mt.	89,827,308.00	115,034,360.00	76,733,341.00	79,644,929.00	122,489,248.00	138,141,838.00
Spirit	Litre	3,645,100.00	3,699,850.00	3,733,000.00	3,925,950.00	3,672,100.00	4,384,550.00
Beer	Litre	120,269,310.00	114,823,415.00	85,820,350.00	91,705,850.00	90,237,940.00	130,473,655.00
Stout	Litre	93,904,080.00	93,920,800.00	78,777,040.00	81,020,560.00	96,846,800.00	115,033,600.00
Malta	Litre	-	26,569,485.00	7,390,935.00	4,263,165.00	8,821,305.00	8,665,020.00
Soft Drink	Litre	55,982,720.00	4,988,360.00	47,782,460.00	58,727,865.00	71,940,975.00	114,346,860.00
Oil Paint	Gal.	3,445,332.00	1,196,415.00	2,077,346.00	1,709,659.00	3,831,674.00	3,623,833.00
Water Paint	Gal.	10,693,640.00	9,529,083.00	7,210,162.00	9,278,060.00	11,296,690.00	14,954,751.00
Varnish	Gal.	861,333.00	299,104.00	519,336.00	427,415.00	957,919.00	905,958.00
Manoline Hair Grease	Kg.	432,669.60	378,067.14	356,796.00	262,412.70	567,072.00	451,001.10
Thinner	Gal.	1,141,767.00	685,945.00	392,476.00	1,709,659.00	3,831,674.00	3,623,833.00
Rubbing Alcohol	Litre	177,365.00	155,897.00	390,097.00	216,870.00	329,360.00	-
Powder Soap	Kg.	5,734,693.00	3,682,602.00	3,711,147.00	1,645,754.00	2,314,470.00	2,807,068.00
Chlorox	Litre	1,857,602.00	1,827,252.00	1,772,808.00	1,977,056.00	869,582.00	691,607.00
Nail	Kg.	-	-	-	-	-	-
Candle	Kg.	6,923,442.00	6,791,287.00	4,048,013.00	6,988,737.00	6,210,613.00	5,831,005.00
Mattresses	Pcs.	33,035,646.00	23,710,416.00	31,075,742.00	39,099,391.00	31,228,107.00	49,327,914.00
Finished Water <sup>2</sup>	Gal.	-	-	-	-	-	-

1. Water from White Plains Treatment Plant.
2. Represents Export values
3. Represents quantity sold, not quantity produced

Sources : Lands, Mines & Energy; Commerce & Industry; Forestry Development Authority (FDA);  
Liberia Produce Marketing Corporation (LPMC) and Liberia Water & Sewer Corporation (LWSC), Monrovia, Liberia

**REAL SECTOR**

CENTRAL BANK OF LIBERIA

**2.4c: Key Output Value - 2012**

Liberian dollars

Commodity	Unit	Jan-12	Feb-12	Mar-12	Apr-12
<b>Agriculture</b>					
Rubber <sup>3*</sup>	Mt.	1,065,111,275.00	1,896,180,510.00	61,564,658.00	37,756,280.00
Cocoa Beans <sup>4</sup>	Mt.	237,937,960.00	225,828,750.00	177,216,075.00	51,701,266.00
Coffee <sup>4</sup>	Mt.	-	-	-	1,704,960.00
Round Logs <sup>3</sup>	M <sup>3</sup>	37,919,136	12,989,519	14,927,001	43,798,978
Sawn Timber <sup>4</sup>	Pcs.	1,090,664	2,314,759	316,229	1,226,294
Fish <sup>4</sup>	Kg.	-	-	-	-
<b>Mining<sup>4</sup></b>					
Gold	Ounces	148,130,831.00	141,694,387.00	147,852,705.00	196,146,217.00
Diamond	Carat	97,685,779.00	91,286,863.00	101,742,265.00	46,508,412.00
<b>Manufacturing<sup>4</sup></b>					
Cement	Mt.	129,055,683.00	177,885,700.00	152,273,974.00	167,590,760.00
Spirit	Litre	3,707,600.00	3,635,550.00	3,106,850.00	3,965,500.00
Beer	Litre	86,691,900.00	87,757,855.00	127,923,825.00	100,996,780.00
Stout	Litre	46,382,800.00	68,254,080.00	87,324,000.00	79,233,460.00
Malta	Litre	-	8,923,770.00	15,395,625.00	8,834,840.00
Soft Drink	Litre	81,335,050.00	75,935,665.00	91,342,450.00	76,793,790.00
Oil Paint	Gal.	4,549,625.00	3,205,703.00	3,076,898.00	3,981,274.00
Water Paint	Gal.	13,068,321.00	9,177,173.00	9,257,517.00	12,304,276.00
Varnish	Gal.	1,137,406.00	801,426.00	769,225.00	995,319.00
Manoline Hair Grease	Kg.	959,262.60	364,560.00	718,801.65	642,320.00
Thinner	Gal.	1,399,699.000	1,188,495.00	708,496.000	1,174,602.00
Rubbing Alcohol	Litre	110,292.00	201,758.00	206,292.00	203,500.00
Powder Soap	Kg.	3,333,264.00	2,791,530.00	2,361,022.00	3,089,278.00
Chlorox	Litre	1,759,742.00	1,872,780.00	1,338,966.00	1,705,145.00
Nail	Kg.	-	-	-	-
Candle	Kg.	6,760,049.00	4,771,620.00	5,604,665.00	5,431,230.00
Mattresses	Pcs.	36,071,805.00	31,976,488.00	35,735,873.00	31,074,958.00
Finished Water <sup>2*</sup>	Gal.	129,642,251.00	21,187,940.00	18,991,377.00	na

1. Water from White Plains Treatment Plant.
2. Represents Export values
3. Represents quantity sold, not quantity produced

\* Estimates

Sources : Lands, Mines & Energy; Commerce & Industry; Forestry Development Authority (FDA);

Liberia Produce Marketing Corporation (LPMC) and Liberia Water & Sewer Corporation (LWSC), Monrovia, Liberia

GOVERNMENT FINANCE

CENTRAL BANK OF LIBERIA

3.1: Government Revenue 2012

Millions of Liberian Dollars

REVENUE SOURCES	Jan-Feb	Mar-Apr
<b>A. Tax Revenue</b>		
International Trade Taxes	1,782.41	18,364.00
<i>Taxes &amp; Duties on Imports</i>	1,702.98	1,769.00
<i>Taxes on Exports</i>	79.43	67.50
Taxes on Income & Profits	1,461.14	2,207.80
<i>Individual Taxes on income &amp; profits</i>	683.25	701.50
<i>Taxes Payable by Corporate Entities</i>	776.59	1,486.30
<i>Others</i>	1.31	20.00
Sale Taxes on Goods & Services	771.14	818.80
<i>Goods &amp; Service Tax</i>	222.38	252.40
<i>Excise Taxes</i>	143.47	129.90
<i>Maritime Revenue</i>	100.03	69.20
<i>Others</i>	305.25	367.20
Property & Real Estate Taxes	24.23	27.90
Other Tax Revenue <sup>1</sup>	564.36	339.00
	-	-
<b>B. Non-Tax Revenue</b>	2,438.24	304.80
Charges & Other Administrative Fees	495.30	304.80
Grants	1,942.94	-
Others	-	-
<i>Contingent Revenue</i>	-	-
<i>Borrowing</i>	-	-
<i>Revenue Carry Forward</i>	-	-
<b>Grand Total Revenue (A + B)</b>	<b>7,041.52</b>	<b>5,534.70</b>

3.2: Government Expenditure 2012

Millions of Liberian Dollars

Expenditure By Sectors	Jan-Feb	Mar-Apr
Public & Administrative Services	2,144.68	1,490.51
Rule of Law & Public Safety	895.01	698.61
Social & Community Services	1,588.44	1,015.52
Economic Services	1,433.33	1,091.94
<b>Total</b>	<b>6,061.46</b>	<b>4,296.57</b>

1 : Forestry Development Authority (FDA)

2 : General Administration includes Security Service Sector

3 : Other Expenditures includes what was previously Development and Commitment

Source : Ministry of Finance, Monrovia, Liberia

**GOVERNMENT FINANCE**

*CENTRAL BANK OF LIBERIA*

**3.2: Summary Estimates of Liberia's Public Debt Profile and Status  
as at End Apr, 2012**

*(In Millions US\$)*

External Debt	Current	Percentage Distribution
<b>Multilateral</b>	<b>1052.1</b>	<b>26.9</b>
<b>Bilateral</b>	<b>727.9</b>	<b>18.6</b>
O/W		
Paris Club	608.4	
Non-Paris Club	119.5	
<b>Commercials</b>	<b>1233.8</b>	<b>31.5</b>
O/W		
Financial Institutions	1148	
Suppliers' Credit	85.8	
<b>Sub-Total</b>	<b>3013.8</b>	
Domestic Debt	903.9	23.1
<b>Sub-Total</b>	<b>903.9</b>	
<b>Total Stock of Debt</b>	<b>3,917.70</b>	<b>100.0</b>

*Source* : Ministry of Finance, Monrovia, Liberia

**EXTERNAL TRADE**

CENTRAL BANK OF LIBERIA

**4.1: Exports and Imports 2010- 2012**

(Millions of United States Dollars)

Period	2010		2011		2012		Balance of Trade		
	Exports	Imports	Exports	Imports	Exports	Imports	2010	2011	2012
Jan	19.3	23.5	25.2	30.0	41.0	70.0	(4.2)	(4.80)	(29.0)
Feb	13.5	25.4	31.7	53.4	36.1	56.0	(11.9)	(21.70)	(19.9)
Mar	11.4	34.2	13.4	88.3	83.5	70.7	(22.8)	(74.90)	12.8
Apr	16.9	71.0	43.3	73.0	31.2	87.6	(54.1)	(29.70)	(56.4)
May	20.8	88.9	30.9	83.2			(68.1)	(52.30)	
Jun	12.1	90.1	16.4	91.9			(78.0)	(75.50)	
Jul	23.4	60.6	33.3	110.9			(37.2)	(77.60)	
Aug	19.8	63.4	39.9	97.6			(43.6)	(57.70)	
Sep	19.6	64.9	10.8	72.1			(45.3)	(61.30)	
Oct	20.8	76.2	45.8	104.6*			(55.4)	(58.80)	
Nov	20.5	48.2	32.2	102.5			(27.7)	(70.34)	
Dec	23.9	63.3	29.0	110.1			(39.4)	(81.12)	
<b>Total</b>	<b>222.0</b>	<b>709.7</b>	<b>351.9</b>	<b>913.1</b>			<b>(487.7)</b>	<b>(665.8)</b>	

**4.2a: Commodity Composition of Exports-2010**

(Thousands of United States Dollars)

Commodity	Jan	Feb	Mar	Apr	May	Jun	Jan-Jun Total
Rubber	14,410.6	10,679.5	7,174.6	4,157.8	17,249.0	8,818.0	62,489.5
Cocoa beans	692.3	24.0	648.3	614.4	0.0	62.0	2,041.0
Coffee	0.0	0.0	0.0	250.0	0.0	13.6	263.6
Round Logs	0.0	23.0	0.0	506.6	0.0	773.2	1,302.8
Iron Ore	0.0	0.0	600.0	600.0	450.0	0.0	1,650.0
Diamond	1,532.6	1,443.4	1,618.8	2,295.0	1,888.1	1,488.4	10,266.3
Gold	527.8	626.5	406.7	7,577.8	398.4	674.2	10,211.4
Other Commodities	2,166.1	671.6	908.7	873.6	772.3	253.2	5,645.6
<b>Total</b>	<b>19,329.4</b>	<b>13,468.1</b>	<b>11,357.1</b>	<b>16,875.2</b>	<b>20,757.8</b>	<b>12,082.6</b>	<b>93,870.2</b>

Commodity	Jul	Aug	Sep	Oct	Nov	Dec	Jul-Dec Total	Grand Total
Rubber	13,653.0	12,972.7	16,250.2	16,777.6	17,172.3	17,632.1	94,457.9	156,947.4
Cocoa beans	648.30	90.00	17.60	690.30	679.10	845.80	2,971.1	5,012.1
Coffee	0.00	-	0.00	0.00	0.00	0.00	0.0	263.6
Round Logs	25,029	927.03	29.38	0.00	441.85	0.00	1,423.3	2,726.1
Iron Ore	-	540.00	0.00	0.00	450.00	450.00	1,440.0	3,090.0
Diamond	529.00	214.64	928.86	1394.29	161.46	1816.53	5,044.8	15,311.1
Gold	868.27	2,014.86	2172.02	1397.94	1188.27	1932.37	9,573.7	19,785.2
Other Commodities	7,694.83	2,986.60	249.81	529.98	393.72	1256.50	13,111.4	18,757.0
<b>Total</b>	<b>23,418.42</b>	<b>19,745.83</b>	<b>19,647.85</b>	<b>20,790.13</b>	<b>20,486.7</b>	<b>23,933.3</b>	<b>128,022.3</b>	<b>221,892.4</b>

\*Revised

Source: Ministry of Commerce & Industry and Ministry of Lands, Mines and Energy, Monrovia, Liberia

## EXTERNAL TRADE

CENTRAL BANK OF LIBERIA

**4.2b: Commodity Composition of Exports-2011 - 2012***(Thousands of United States Dollars)*

Commodity	Jan	Feb	Mar	Apr	May	Jun	Jan-Jun Total
Rubber	14,691.2	26,233.82	855.54	37,812.42	24,436.49	1,042.52	105,071.98
Cocoa beans	1,514.1	692.30	1,862.85	1,712.30	1,512.80	1,100.93	8,395.28
Coffee	0.0	-	-	-	100.00	-	100.00
Round Logs	3,106.0	563.20	5,402.44	843.98	560.21	4,003.06	14,478.89
Iron Ore	0.0	-	450.00	-	-	5,054.45	5,504.45
Gold	1,226.4	1,167.39	1,346.74	1,773.76	1,822.04	1,845.39	9,181.68
Diamond	3,427.1	811.68	1,505.06	197.10	1,483.26	2,457.08	9,881.26
Other Commodities	1,284.8	2,213.79	1,956.73	944.63	1,014.96	933.78	8,348.65
<b>Total</b>	<b>25,249.5</b>	<b>31,682.18</b>	<b>13,379.36</b>	<b>43,284.19</b>	<b>30,929.76</b>	<b>16,437.21</b>	<b>160,962.19</b>

Commodity	Jul	Aug	Sep	Oct	Nov	Dec	Jul-Dec Total	Grand Total
Rubber	30,426.5	32,582.67	2,183.8	36,055.83	1,504.1	18,276.91	121,029.82	226,101.80
Cocoa beans	1,534.4	1,628.60	827.3	825.90	204.0	917.80	5,937.95	14,333.23
Coffee	-	-	-	-	-	-	-	100.00
Round Logs	238.5	1,684.22	2,255.8	239.06	2,420.3	-	6,837.78	21,316.67
Iron Ore	-	0.00	-	3,082.27	7,641.88	5,953.58	16,677.73	22,182.18
Diamond	1,161.89	1,728.27	1,407.55	1,018.32	1,555.96	1,592.24	8,464.23	17,645.91
Gold	1,662.7	1,401.96	817.9	561.87	218.0	387.50	5,049.95	14,931.21
Other Commodities	1,128.7	4,045.29	3,323.7	4,041.85	18,691.7	1,879.94	33,111.11	41,459.76
<b>Total</b>	<b>36,152.6</b>	<b>43,071.0</b>	<b>10,816.0</b>	<b>45,825.1</b>	<b>32,235.9</b>	<b>29,008.0</b>	<b>197,108.57</b>	<b>358,070.76</b>

**4.2c: Commodity Composition of Exports-2012***(Thousands of United States Dollars)*

Commodity	Jan	Feb	Mar	Apr
Rubber	18,606.1	6,705.1	35,245.0	510.22
Cocoa beans	1,662.1	112.0	798.4	720.30
Coffee	-	-	52.50	30.00
Round Logs	4,576.8	3,782.7	852.3	7,482.24
Iron Ore	5,955.6	18,878.8	24,200.7	21,508.87
Gold	2,031.4	1,927.8	2,054.7	-
Diamond	1,339.6	1,242.0	1,382.2	-
Other Commodities	6,744.4	3,283.1	18,927.7	1,104.38
<b>Total</b>	<b>40,915.9</b>	<b>35,931.5</b>	<b>83,513.6</b>	<b>31,356.0</b>

Source: Ministry of Commerce &amp; Industry and Ministry of Lands, Mines and Energy, Monrovia, Liberia

## EXTERNAL TRADE

CENTRAL BANK OF LIBERIA

## 4.3a: Commodity Composition of Imports - 2010

Thousands of United States Dollars

Commodity	Jan	Feb	Mar	Apr	May	Jun	Jan-Jun Total
<b>Food and Live Animals</b>	<b>7,488.2</b>	<b>7,013.2</b>	<b>13,419.18</b>	<b>10,537.53</b>	<b>20,148.72</b>	<b>14,442.33</b>	<b>73,049.13</b>
O/w Commercial Rice	1,065.3	1,853.2	5,099.00	4,291.16	3,146.57	84.24	15,539.54
O/w Non-Commercial Rice	1,288.1	524.3	529.36	218.46	1,164.00	-	3,724.22
Beverage and Tobacco	1,454.0	1,053.7	2,030.37	2,457.08	2,075.27	1,616.31	10,686.78
Crude Materials	237.9	384.9	565.52	516.34	428.32	964.32	3,097.27
Mineral, Fuels, Lubricants	-	398.4	1,186.26	599.68	14,000.75	39,100.78	55,285.84
Animal and Vegetable Oil	-	223.4	360.68	3,763.48	710.30	73.87	5,131.74
Chemicals and Related Products	2,258.9	2,830.3	1,558.52	2,650.80	3,433.41	2,564.84	15,296.81
Manufactured Products	3,558.3	833.6	3,328.57	9,496.20	6,950.22	3,586.99	27,753.91
Machinery & Transport Equipment	7,446.0	9,884.4	6,194.68	9,137.34	21,096.81	928.69	54,687.86
Petroleum Products	-	1,162.5	3,340.84	30,878.38	16,641.44	23,776.14	75,799.30
Miscellaneous Articles <sup>1</sup>	1,061.5	1,634.9	2,203.23	947.89	3,446.21	3,074.31	12,368.03
<b>Total</b>	<b>23,504.8</b>	<b>25,419.3</b>	<b>34,187.9</b>	<b>70,984.7</b>	<b>88,931.4</b>	<b>90,128.6</b>	<b>333,156.6</b>

Commodity	Jul	Aug	Sep	Oct	Nov	Dec	Jul-Dec Total	Grand Total
<b>Food and Live Animals</b>	<b>18,027.94</b>	<b>19,655.84</b>	<b>31,122.06</b>	<b>24,178.30</b>	<b>11,212.95</b>	<b>8,113.01</b>	<b>112,310.09</b>	<b>185,359.22</b>
O/w Commercial Rice	10,042.59	9,248.40	5,851.20	6,012.42	10.61	587.79	31,753.01	47,292.54
O/w Non-Commercial Rice	502.76	946.66	30.01	-	218.39	-	1,697.83	5,422.05
Beverage and Tobacco	1,439.36	1,487.26	1,078.68	540.65	1,321.58	1,054.94	6,922.47	17,609.24
Crude Materials	646.45	353.59	408.61	310.70	781.87	440.98	2,942.20	6,039.47
Mineral, Fuels, Lubricants	1,583.87	606.01	658.60	1,008.04	566.29	4,818.06	9,240.87	64,526.71
Animal and Vegetable Oil	288.48	252.45	982.87	209.12	3,616.02	1,054.88	6,403.82	11,535.56
Chemicals and Related Products	2,540.62	3,608.06	2,648.26	2,767.85	2,353.13	2,558.92	16,476.84	31,773.65
Manufactured Products	10,584.59	8,908.42	5,880.69	7,276.81	3,604.75	6,702.09	42,957.35	70,711.26
Machinery & Transport Equipment	14,107.93	10,544.51	15,134.97	10,155.12	9,701.87	12,401.37	72,045.77	126,733.63
Petroleum Products	6,176.90	12,731.31	778.78	26,428.54	8,172.83	20,647.74	74,936.11	150,735.40
Miscellaneous Articles <sup>1</sup>	5,211.76	5,225.52	6,169.28	3,349.20	6,905.53	5,536.54	32,397.83	44,765.86
<b>Total</b>	<b>60,607.9</b>	<b>63,373.0</b>	<b>64,862.80</b>	<b>76,224.3</b>	<b>48,236.82</b>	<b>63,328.53</b>	<b>376,633.35</b>	<b>709,789.99</b>

Sources: Ministry of Commerce &amp; Industry and Ministry of Finance, Monrovia, Liberia.

## EXTERNAL TRADE

CENTRAL BANK OF LIBERIA

## 4.3b: Commodity Composition of Imports - 2011

Thousands of United States Dollars

2011

Commodity	Jan	Feb	Mar	Apr	May	Jun	Jan-Jun Total
<b>Food and Live Animals</b>	7,185.99	26,009.04	37,988.98	17,443.76	23,913.05	11,468.15	124,008.97
O/w Commercial Rice	180.22	15,510.49	3,411.43	12,112.84	13,774.77	897.42	45,887.17
O/w Non-Commercial Rice	209.92	1,479.36	2.77	3.18	168.39	858.58	2,722.20
Beverage and Tobacco	854.02	1,893.26	1,443.04	751.94	1,262.57	1,723.57	7,928.40
Crude Materials	458.02	230.49	484.32	310.97	550.12	407.64	2,441.56
Mineral, Fuels, Lubricants	1,497.45	835.60	5,388.30	358.83	27,162.86	494.68	35,737.73
Animal and Vegetable Oil	314.66	710.49	57.78	66.57	530.65	469.76	2,149.91
Chemicals and Related Products	2,207.81	3,255.05	1,102.49	2,303.96	4,807.43	4,198.33	17,875.07
Manufactured Products	5,321.05	5,966.53	6,929.35	10,844.53	8,040.81	5,819.29	42,921.56
Machinery & Transport Equipment	6,911.49	5,931.02	11,318.43	27,850.18	14,425.47	19,919.55	86,356.14
Petroleum Products	2,015.27	6,471.25	16,963.77	11,482.88	26,529.40	38,816.22	102,278.79
Miscellaneous Articles <sup>1</sup>	3,260.92	2,081.35	6,664.52	1,619.32	2,548.17	8,622.09	24,796.38
<b>Total</b>	<b>30,026.68</b>	<b>53,384.08</b>	<b>88,340.99</b>	<b>73,032.95</b>	<b>109,770.53</b>	<b>91,939.28</b>	<b>446,494.50</b>

Commodity	Jul	Aug	Sep	Oct	Nov	Dec	Jul-Dec Total	Grand Total
<b>Food and Live Animals</b>	27,005.41	24,984.34	31,462.00	42,966.26	28,970.89	26,745.82	182,134.72	306,143.69
O/w Commercial Rice	7,969.99	12,218.34	7,330.15	27,746.91	14,245.91	3,187.48	72,698.78	118,585.95
O/w Non-Commercial Rice	-	5.23	-	1.11	469.71	17.05	493.10	3,215.30
Beverage and Tobacco	2,373.99	2,415.04	2,539.57	2,751.71	776.09	1,659.42	12,515.82	20,444.22
Crude Materials	403.08	511.40	934.99	347.07	483.30	306.08	2,985.92	5,427.48
Mineral, Fuels, Lubricants	6,597.11	8,945.42	1,091.51	721.50	2,260.00	6,685.27	26,300.81	62,038.54
Animal and Vegetable Oil	1,322.06	1,320.55	20.99	227.35	673.05	5,801.90	9,365.90	11,515.81
Chemicals and Related Products	2,965.08	3,401.08	4,009.14	3,326.19	1,861.80	2,005.74	17,569.03	35,444.10
Manufactured Products	11,447.14	8,786.35	9,835.74	10,919.25	4,405.53	5,771.09	51,165.10	94,086.66
Machinery & Transport Equipment	31,764.45	29,045.14	6,931.20	28,795.95	29,584.91	38,119.09	164,240.74	250,596.88
Petroleum Products	23,589.03	16,046.61	12,930.03	11,029.09	29,870.51	21,393.46	114,858.73	217,137.52
Miscellaneous Articles <sup>1</sup>	3,479.28	2,128.50	2,300.66	3,464.27	3,652.36	1,627.67	16,652.74	41,449.12
<b>Total</b>	<b>110,946.63</b>	<b>97,584.43</b>	<b>72,055.83</b>	<b>104,548.64</b>	<b>102,538.44</b>	<b>110,115.54</b>	<b>597,789.51</b>	<b>1,044,284.01</b>

## 4.3c: Commodity Composition of Imports -2012

2012

Commodity	Jan	Feb	Mar	Apr
<b>Food and Live Animals</b>	11,161.11	11,322.30	18,199.64	11,465.93
O/w Commercial Rice	8,495.91	1,328.25	5,002.55	2,428.73
O/w Non-Commercial Rice	10.84	11.15	-	-
Beverage and Tobacco	1,067.23	1,699.04	885.52	1,952.21
Crude Materials	454.32	365.41	763.25	192.69
Mineral, Fuels, Lubricants	730.14	630.24	2,480.78	2,516.43
Animal and Vegetable Oil	297.67	286.52	621.82	657.27
Chemicals and Related Products	4,431.81	2,199.62	6,855.67	3,563.24
Manufactured Products	7,382.42	6,967.32	8,949.99	7,090.50
Machinery & Transport Equipment	11,422.18	18,065.89	12,513.86	33,374.74
Petroleum Products	30,329.00	12,701.67	15,196.81	24,449.34
Miscellaneous Articles <sup>1</sup>	2,704.21	1,734.71	4,209.71	2,368.59
<b>Total</b>	<b>69,980.09</b>	<b>55,972.72</b>	<b>70,677.05</b>	<b>87,630.94</b>

Sources: Ministry of Commerce &amp; Industry and Ministry of Finance, Monrovia, Liberia.



## EXTERNAL TRADE

CENTRAL BANK OF LIBERIA

**4.4: Volume of Imports of Petroleum Products-2010- 2012**

(Volume in gals.)

2010	Premium	Diesel	Kerosene	Jet fuel	Total
Jan	2,416,100	971,655	0	96,000	3,483,755
Feb	555,000	0	0	0	555,000
March	0	1,535,000	0	0	1,535,000
April	3,761,420	7,936,257	0	1,659,840	13,357,517
May	2,405,000	3,591,900	0	0	5,996,900
June	4,876,600	4,218,861	0	480,000	9,575,461
Jul	1,646,130	765,658	0	477,120	2,888,908
Aug	1,558,810	4,127,615	0	0	5,686,425
Sep	481,000	185,000	0	0	666,000
Oct	4,187,660	7,648,270	0	1,613,570	13,449,500
Nov	1,827,374	2,031,526	0	0	3,858,900
Dec	4,115,878	4,709,889	0	831,760	9,657,527
<b>Total</b>	<b>27,830,972</b>	<b>37,721,632</b>	<b>0</b>	<b>5,158,290</b>	<b>70,710,893</b>

2011	Premium	Diesel	Kerosene	Jet fuel	Total
Jan	-	738,076	-	-	738,076
Feb	1,480,000	1,110,000	-	-	2,590,000
Mar	2,670,593	3,168,005	-	1,097,681.22	6,936,279
Apr	4,182,856.29	-	-	-	4,182,856.29
May	4,709,021.08	5,578,676.11	-	1,294,841.64	11,582,538.83
June	7,978,638.56	4,645,656.73	-	727,492.52	13,351,787.81
Jul	2,669,547.41	5,430,753.81	-	-	8,100,301.22
Aug	1,681,442.80	3,705,720.20	-	435,926.60	5,823,089.60
Sep	-	4,267,713.20	-	405,520.00	4,673,233.20
Oct	2,093,830.00	603,793,751.84	-	138,857,417.60	744,744,999.44
Nov	5,253,796.50	5,055,657.80	-	398,334.60	10,707,788.90
Dec	1,280,967.38	24,809,573.00	-	797,453.60	26,887,993.98
<b>Total</b>	<b>34,000,693</b>	<b>662,303,583</b>	<b>0</b>	<b>144,014,668</b>	<b>840,318,944</b>

2012	Premium	Diesel	Kerosene	Jet fuel	Total
Jan	4,197,923.80	5,832,690	-	-	10,030,614
Feb	2,873,981	623,195	-	811,920.60	4,309,096
Mar	-	4,141,208.96	-	4,225,444.40	8,366,653
Apr	2,608,858.90	4,671,053.51	-	-	7,279,912
<b>Total</b>	<b>9,680,763.62</b>	<b>15,268,147.05</b>	<b>-</b>	<b>5,037,365.00</b>	<b>29,986,275.67</b>

Source: Ministry of Commerce &amp; Industry and Central Bank of Liberia