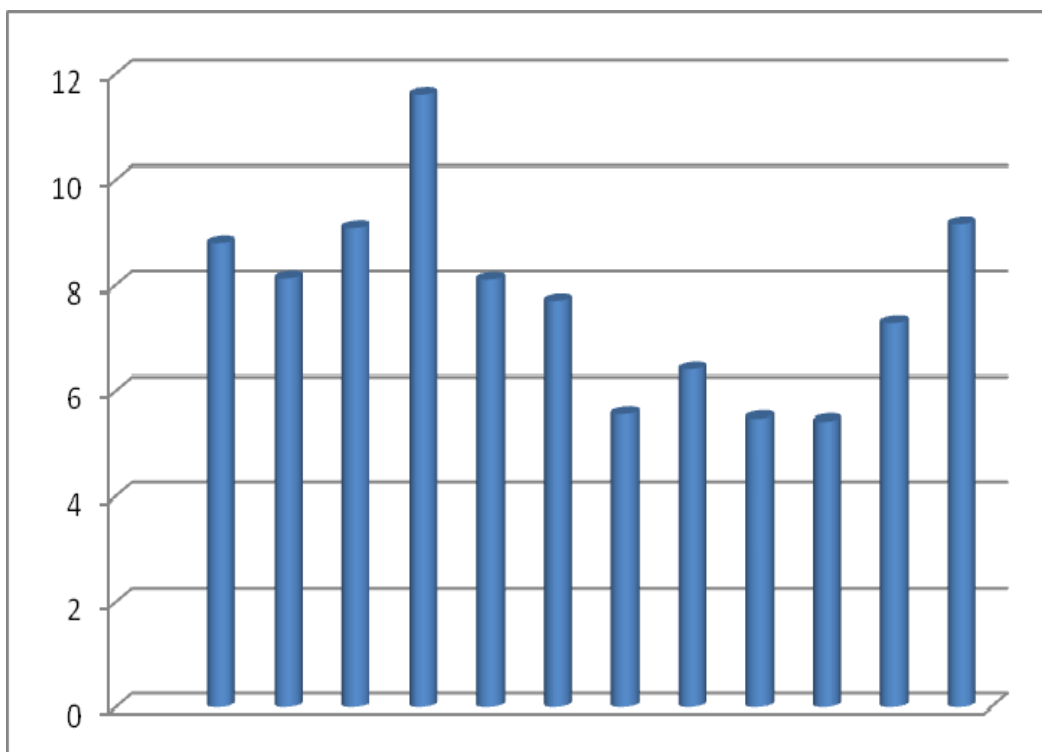




## ***CENTRAL BANK OF LIBERIA***



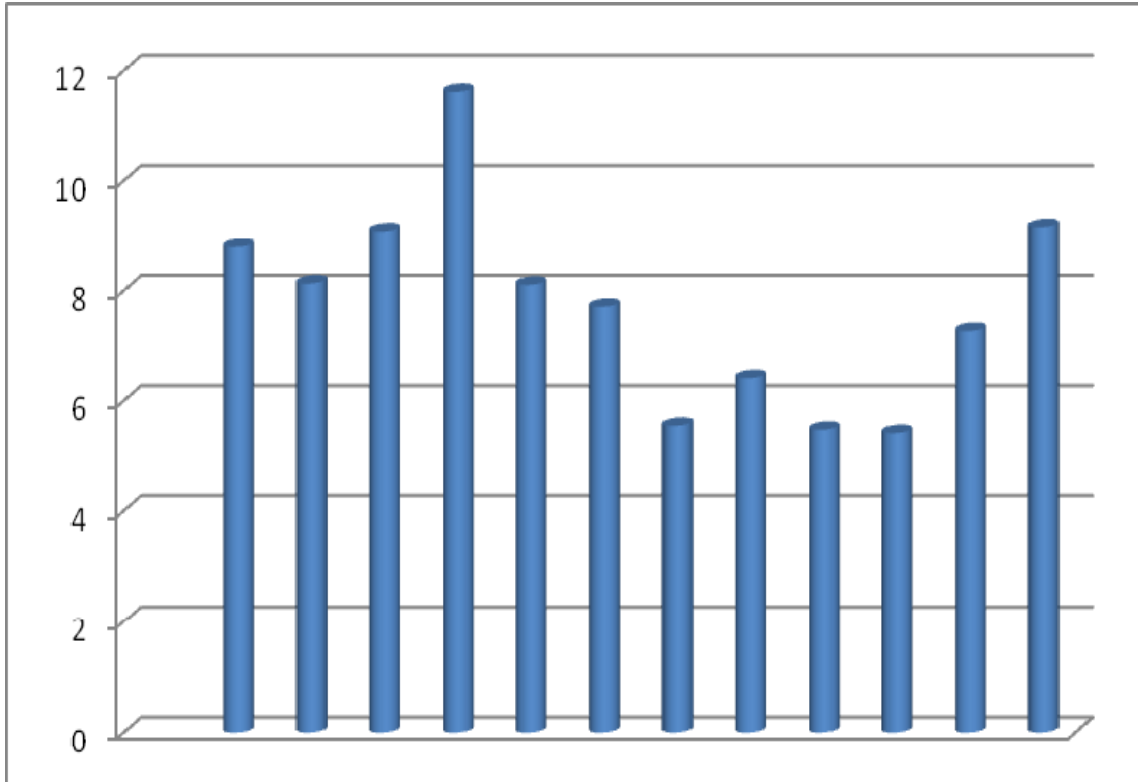
# **Liberia Financial STATISTICS**

**Vol. 16, No. 3  
May. - Jun., 2014**

Research, Policy and Planning Department  
Monrovia, Liberia



# ***CENTRAL BANK OF LIBERIA***



# **Liberia Financial STATISTICS**

---

**THE LIBERIA FINANCIAL STATISTICS (LFS) is produced by the Bank's Research, Policy and Planning Department. Inquiries concerning this publication should be addressed to:**

**The Director  
Research, Policy and Planning Department  
Central Bank of Liberia  
Warren and Carey Streets  
P. O. Box 2048  
Monrovia, Liberia**

**Telephone #s : 00(231/886-516-006/880-649-103  
Fax #s : 00(231) 077059642  
Swift : CBLRLRLM**

---

## Table of Contents

*INTRODUCTION* ..... -ii-

*Statistics*..... 1 - 58

<b>Ref. No.</b>	<b>Description of Statistics</b>	<b>Pages</b>
<b>1</b>	<b><i>MONEY AND BANKING</i></b> .....	<b>1 – 32</b>
1.1a	Depository Corporations Survey –2012 .....	1 – 2
1.1b	Depository Corporations Survey –2013 .....	3 – 4
1.1c	Depository Corporations Survey - 2014 .....	5
1.2a	Sectoral Balance Sheet of Other Depository Corp. – 2012.....	6 – 7
1.2b	Sectoral Balance Sheet of Other Depository Corp. –2013.....	8 – 9
1.2c	Sectoral Balance Sheet of Other Depository Corp. –2014.....	10
1.3a	Sectoral Balance Sheet of Central Bank of Liberia. – 2012.....	11 - 12
1.3b	Sectoral Balance Sheet of Central Bank of Liberia – 2013.....	13 - 14
1.3c	Sectoral Balance Sheet of Central Bank of Liberia – 2014.....	15
1.4a	Commercial Banks’ Loans by Economic Sectors – 2012.....	16 - 17
1.4b	Commercial Banks’ Loans by Economic Sectors – 2013 .....	18 - 19
1.4c	Commercial Banks’ Loans by Economic Sectors – 2014.....	20
1.5	Commercial Banks’ Interest Rate – 2012-2014.....	21
1.6	Liberian Dollar Exchange Rates - Period Averages: 2012 - 2014.....	22
1.7	Liberian Dollar Exchange Rates –End of Period: 2012- 2014.....	23
1.8a	Liberian Dollar Exchange Rates – Jan-Feb., 2014.....	24
1.8b	Liberian Dollar Exchange Rates – Mar - Apr., 2014.....	25
1.8c	Liberian Dollar Exchange Rates – May - Jun., 2014.....	26
1.9	Commercial Banks’ Inflows and Outflows: 2012 - 2014.....	27
1.10a	Central Bank of Liberia FX Auction – 2012.....	28 - 29
1.10b	Central Bank of Liberia FX Auction – 2013.....	30 - 31
1.10c	Central Bank of Liberia FX Auction – 2014.....	32
<b>2</b>	<b><i>REAL SECTOR</i></b> .....	<b>33 - 48</b>
2.1a	Harmonized Consumer Price Index – 2012.....	33
2.1b	Harmonized Consumer Price Index – 2013 .....	34
2.1c	Harmonized Consumer Price Index – 2014 .....	35
2.2a	HCPI Inflation Rates (Year-on-Year) – 2012.....	36
2.2b	HCPI Inflation Rates (Year-on-Year) – 2013.....	37
2.2c	HCPI Inflation Rates (Year-on-Year) – 2014.....	38
2.3a	Key Output Volume – 2012.....	39 - 40
2.3b	Key Output Volume – 2013/14.....	41 - 42
2.3c	Key Output Volume – 2014.....	43
2.4a	Key Output Value – 2012.....	44 - 45
2.4b	Key Output Value – 2013/14.....	46 - 47
2.4c	Key Output Value – 2014.....	48
<b>3</b>	<b><i>GOVERNMENT FINANCE</i></b> .....	<b>49 - 52</b>
3.1a	Government Revenue – 2012 – 2013.....	49
3.1b	Government Revenue – 2014.....	50
3.2a	Government Expenditure – 2012 – 2014 .....	51
3.2	Liberia’s Public Debt Stock and Status as at Mar. 2014.....	52
<b>4</b>	<b><i>EXTERNAL TRADE</i></b> .....	<b>53 - 58</b>
4.1	Exports and Imports – 2012 - 2014.....	53
4.2a	Commodity Composition of Exports – 2012.....	53
4.2b	Commodity Composition of Exports – 2013- 2014.....	54
4.3a	Commodity Composition of Imports in CIF Values – 2012 .....	55
4.3b	Commodity Composition of Imports in CIF Values – 2013.....	55
4.3c	Commodity Composition of Imports in CIF Values – 2014.....	56
4.4a	Volume of Imports of Petroleum Products – 2012 - 2013.....	57
4.4b	Volume of Imports of Petroleum Products – 2014 .....	58

# Introduction

**T**he Liberia Financial Statistics (LFS) is a bi-monthly data publication of the Central Bank of Liberia (CBL). It is, among many, a major source of statistical information about the Liberian economy. It provides macroeconomic statistics to both the public and private sectors which include students, researchers, investors, policymakers, etc.

This publication represents the Third Edition (May - June) of 2014, Volume 16, No. 3. The data coverage extends from January 2012 to June 2014, and includes statistics drawn from the four (4) sectors of the Liberia economy; namely, Monetary, Real, Fiscal and External. The graph on the cover and inside pages depicts *the HCPI Inflation rate on Food & Non-alcoholic Beverages (Year on Year) from July 2013 - June, 2014*.

The CBL's Management is exceptionally grateful to all its many data providers for their cooperation which has immensely contributed to the compilation and timely publication of this document.

It is the Bank's hope that this excellent relationship will continue to nurture as we strive together in building a strong statistical database for our country.

**MONEY AND BANKING**
**CENTRAL BANK OF LIBERIA**
**1.1a: Depository Corporations Survey - 2012**
*Millions of Liberian Dollars*

	<b>Jan-12</b>	<b>Feb-12</b>	<b>Mar-12</b>	<b>Apr-12</b>	<b>May-12</b>	<b>Jun-12</b>
<b>Foreign Assets (net)</b>	<b>27,538.9</b>	<b>26,345.9</b>	<b>27,469.0</b>	<b>26,215.5</b>	<b>25,244.0</b>	<b>25,546.0</b>
Foreign Assets (MA)	39,000.0	38,195.1	38,970.8	39,755.2	39,613.2	37,821.8
(-) Foreign Liabilities (MA)	21,103.9	21,104.0	21,247.4	21,261.9	21,822.0	21,391.0
Foreign Assets (CoB)	10,404.8	11,847.6	12,626.2	10,353.5	10,043.3	11,609.9
(-) Foreign Liabilities (CoB)	762.0	2,592.7	2,880.6	2,631.2	2,590.6	2,494.7
<b>Domestic Credit</b>	<b>33,489.3</b>	<b>34,764.6</b>	<b>34,516.3</b>	<b>33,845.5</b>	<b>37,126.0</b>	<b>35,785.9</b>
Claims on General Government (net)	13,683.1	14,489.2	13,830.3	12,915.8	14,947.0	14,376.4
Claims on General Government (MA)	19,225.4	19,226.1	19,350.3	19,350.3	19,848.4	20,964.7
(-) General Government Deposits (MA)	4,933.7	4,098.5	4,816.8	5,736.3	4,116.5	5,679.7
Claims on General Government (CoB)	430.0	416.1	421.8	421.8	421.8	413.5
(-) General Government Deposits (CoB)	1,038.6	1,054.5	1,125.0	1,120.0	1,206.7	1,322.1
Claims on Public Corporations (MA)	0.0	0.0	0.0	0.0	0.0	0.0
Claims on Public Corporations (CoB)	1,053.9	1,187.5	1,279.3	1,264.6	1,354.9	1,457.0
Claims on Private Sector (MA)	426.0	341.5	345.1	347.3	361.2	354.9
Claims on Private Sector (CoB)	18,238.4	18,660.6	18,946.9	19,203.3	20,353.8	19,484.5
Claims on NBFIs (MA)	0.0	0.0	0.0	0.0	0.0	0.0
Claims on NBFIs (CoB)	87.8	85.8	114.7	114.5	108.9	113.0
<b>Money</b>	<b>43,180.9</b>	<b>41,669.9</b>	<b>38,975.8</b>	<b>41,410.4</b>	<b>42,906.4</b>	<b>42,424.3</b>
Currency Outside Banks (MA)	6,157.1	6,091.6	6,094.3	5,908.7	6,021.0	5,778.0
Liberian Currency in Circulation (MA)	7,144.4	7,263.5	7,339.6	7,354.7	7,296.7	7,173.5
(-) Currency Holdings (CoB)	987.3	1,171.8	1,245.3	1,446.0	1,275.7	1,395.5
<b>Demand Deposits</b>	<b>24,427.4</b>	<b>23,431.7</b>	<b>20,827.1</b>	<b>23,393.5</b>	<b>24,566.2</b>	<b>24,451.7</b>
Demand Deposits (MA)	1,253.1	1,319.0	1,351.4	1,366.8	343.9	355.6
Demand Deposits (CoB)	23,174.3	22,112.7	19,475.7	22,026.6	24,222.3	24,096.2
<b>Other Deposits</b>	<b>12,596.5</b>	<b>12,146.6</b>	<b>12,054.4</b>	<b>12,108.2</b>	<b>12,319.1</b>	<b>12,194.6</b>
Other Deposits (MA)	290.1	287.8	312.7	272.2	278.5	308.7
Time and Savings Deposits (CoB)	12,306.4	11,858.8	11,741.7	11,836.0	12,040.7	11,885.9
<b>Bonds and Securities (CoB)</b>	<b>0.0</b>	<b>0.0</b>	<b>0.0</b>	<b>0.0</b>	<b>0.0</b>	<b>0.0</b>
<b>Restricted Deposits</b>	<b>48.1</b>	<b>47.6</b>	<b>47.6</b>	<b>46.8</b>	<b>46.3</b>	<b>45.7</b>
<b>Capital Accounts</b>	<b>27,494.5</b>	<b>27,565.8</b>	<b>27,581.9</b>	<b>27,497.6</b>	<b>28,788.6</b>	<b>27,975.4</b>
Capital Accounts (MA)	16,963.1	16,980.5	17,016.6	16,830.4	17,729.4	16,961.8
Capital Accounts (CoB)	10,531.4	10,585.3	10,565.3	10,667.2	11,059.2	11,013.7
<b>Other Items (net)</b>	<b>(9,405.2)</b>	<b>(7,885.0)</b>	<b>(4,307.3)</b>	<b>(8,621.5)</b>	<b>(9,092.8)</b>	<b>(8,804.9)</b>
Unclassified Liabilities (MA)	11,691.6	11,616.3	11,746.8	11,606.6	12,470.9	12,342.4
(-) Unclassified Assets (MA)	16,406.4	16,567.4	16,621.0	16,628.8	17,044.4	17,239.2
(-) Unclassified Assets (CoB)	9,981.7	8,656.5	8,115.3	8,145.4	7,704.9	10,083.3
Unclassified Liabilities (CoB)	6,994.8	7,199.6	9,612.7	6,084.3	5,491.1	8,222.4
Commercial Banks' Deposits (MA)	12,318.1	12,309.0	12,267.6	12,372.1	13,617.6	13,125.4
(-) Reserves (CoB)	13,831.1	13,768.5	13,110.9	14,075.8	15,920.3	15,185.5
Currency Holdings (CoB)	987.3	1,171.8	1,245.3	1,446.0	1,275.7	1,395.5
Liabilities to Central Bank (CoB)	110.3	109.5	111.0	111.0	220.2	216.5
(-) Claims on Domestic Banks (MA)	652.3	661.3	824.3	732.1	820.8	955.5
(-) Claims on Central Bank of Liberia (CoB)	919.3	919.3	925.5	925.5	950.2	931.7
(-) Unbalanced Items	283.6	281.7	306.3	266.0	272.3	288.2
<b>Vertical Check</b>	<b>(0.0)</b>	<b>0.0</b>	<b>(0.0)</b>	<b>(0.0)</b>	<b>(0.0)</b>	<b>(0.0)</b>

*NBFIs: Non-Bank Financial Institutions*
*Source: Central Bank of Liberia, Monrovia, Liberia.*

**MONEY AND BANKING**
**CENTRAL BANK OF LIBERIA**
**1.1a: Depository Corporations Survey - 2012 (contd.)**
*Millions of Liberian Dollars*

	Jul-12	Aug-12	Sep-12	Oct-12	Nov-12	Dec-12
<b>Foreign Assets (net)</b>	<b>23,371.7</b>	<b>23,719.6</b>	<b>24,190.0</b>	<b>23,053.6</b>	<b>22,654.3</b>	<b>25,420.0</b>
Foreign Assets (MA)	36,420.3	34,847.2	35,033.7	34,684.6	34,432.8	36,108.2
(-) Foreign Liabilities (MA)	21,103.9	19,961.0	20,121.3	19,964.1	19,963.6	19,963.6
Foreign Assets (CoB)	10,525.0	11,313.1	11,668.8	11,017.6	10,874.7	11,673.0
(-) Foreign Liabilities (CoB)	2,469.7	2,479.7	2,391.3	2,684.5	2,689.6	2,397.6
<b>Domestic Credit</b>	<b>36,352.0</b>	<b>33,528.9</b>	<b>37,800.6</b>	<b>36,811.5</b>	<b>39,264.9</b>	<b>37,715.5</b>
Claims on General Government (net)	14,990.0	11,842.7	15,296.0	14,981.6	17,242.7	15,528.0
Claims on General Government (MA)	20,695.8	20,696.2	20,561.6	20,427.1	20,427.6	19,749.7
(-) General Government Deposits (MA)	4,818.6	4,462.1	4,237.9	4,347.1	2,352.5	3,422.0
Claims on General Government (CoB)	402.4	402.4	405.2	391.5	380.7	433.5
(-) General Government Deposits (CoB)	1,289.6	4,793.8	1,432.9	1,489.9	1,213.0	1,233.3
Claims on Public Corporations (MA)	0.0	0.0	0.0	0.0	0.0	0.0
Claims on Public Corporations (CoB)	1,484.5	1,503.2	1,538.7	1,572.8	1,565.9	1,614.4
Claims on Private Sector (MA)	96.3	102.6	101.3	115.4	123.1	137.5
Claims on Private Sector (CoB)	19,575.9	19,936.1	20,699.5	19,984.9	20,176.0	20,277.4
Claims on NBFIs (MA)	0.0	0.0	0.0	0.0	0.0	0.0
Claims on NBFIs (CoB)	205.4	144.3	165.1	156.7	157.3	158.2
<b>Money</b>	<b>40,524.5</b>	<b>41,166.0</b>	<b>42,785.7</b>	<b>41,691.2</b>	<b>42,575.7</b>	<b>45,089.1</b>
Currency Outside Banks (MA)	5,493.7	5,302.2	5,364.1	5,633.4	6,422.2	7,291.3
Liberian Currency in Circulation (MA)	7,069.7	6,929.6	6,939.8	7,104.7	7,556.5	8,614.2
(-) Currency Holdings (CoB)	1,576.1	1,627.4	1,575.7	1,471.3	1,134.3	1,322.9
<b>Demand Deposits</b>	<b>23,005.9</b>	<b>22,480.5</b>	<b>23,620.6</b>	<b>22,097.8</b>	<b>22,383.0</b>	<b>23,188.1</b>
Demand Deposits (MA)	219.7	259.5	269.3	284.9	317.8	346.7
Demand Deposits (CoB)	22,786.2	22,221.0	23,351.3	21,812.9	22,065.2	22,841.4
<b>Other Deposits</b>	<b>12,025.0</b>	<b>13,383.3</b>	<b>13,801.0</b>	<b>13,960.0</b>	<b>13,770.5</b>	<b>14,609.7</b>
Other Deposits (MA)	164.5	63.4	154.2	41.9	(48.0)	1,336.5
Time and Savings Deposits (CoB)	11,860.5	13,320.0	13,646.8	13,918.1	13,818.5	13,273.2
<b>Bonds and Securities (CoB)</b>	<b>0.0</b>	<b>0.0</b>	<b>0.0</b>	<b>0.0</b>	<b>0.0</b>	<b>0.0</b>
<b>Restricted Deposits</b>	<b>45.3</b>	<b>44.5</b>	<b>43.7</b>	<b>43.7</b>	<b>43.7</b>	<b>43.7</b>
<b>Capital Accounts</b>	<b>27,361.7</b>	<b>27,169.6</b>	<b>27,385.6</b>	<b>27,350.9</b>	<b>28,101.9</b>	<b>26,726.6</b>
Capital Accounts (MA)	16,478.9	16,390.3	16,269.8	16,251.2	16,208.7	15,618.3
Capital Accounts (CoB)	10,882.8	10,779.3	11,115.8	11,099.7	11,893.2	11,108.3
<b>Other Items (net)</b>	<b>(8,043.2)</b>	<b>(11,068.2)</b>	<b>(8,070.2)</b>	<b>(9,178.8)</b>	<b>(8,850.0)</b>	<b>(7,387.4)</b>
Unclassified Liabilities (MA)	12,177.9	11,650.9	11,747.3	11,521.0	12,463.6	12,379.6
(-) Unclassified Assets (MA)	17,145.1	16,414.1	16,577.8	16,573.7	16,529.9	16,466.4
(-) Unclassified Assets (CoB)	9,738.7	9,335.1	9,395.0	9,409.2	8,173.4	6,887.9
Unclassified Liabilities (CoB)	8,457.6	4,743.7	7,989.3	6,787.5	5,487.2	4,658.4
Commercial Banks' Deposits (MA)	12,971.5	13,053.6	13,224.8	12,978.6	14,111.8	12,761.0
(-) Reserves (CoB)	15,132.4	15,021.9	15,362.3	14,573.7	15,519.0	14,568.2
Currency Holdings (CoB)	1,576.1	1,627.4	1,575.7	1,471.3	1,134.3	1,322.9
Liabilities to Central Bank (CoB)	210.7	212.2	195.4	196.0	562.2	982.4
(-) Claims on Domestic Banks (MA)	649.8	714.1	693.4	696.9	1,416.6	1,947.1
(-) Claims on Central Bank of Liberia (CoB)	919.3	919.3	913.1	907.0	907.0	907.0
(-) Unbalanced Items	148.5	48.4	138.8	27.3	(63.3)	1,284.9
<b>Vertical Check</b>	<b>(0.0)</b>	<b>(0.0)</b>	<b>(0.0)</b>	<b>(0.0)</b>	<b>(0.0)</b>	<b>0.0</b>

*NBFIs: Non-Bank Financial Institutions*
*Source: Central Bank of Liberia, Monrovia, Liberia.*

**MONEY AND BANKING**

**CENTRAL BANK OF LIBERIA**

**1.1b: Depository Corporations Survey -2013**

*Millions of Liberian Dollars*

	Jan-13	Feb-13	Mar-13	Apr-13	May-13	Jun-13
<b>Foreign Assets (net)</b>	<b>25,362.1</b>	<b>25,972.5</b>	<b>23,822.0</b>	<b>26,081.9</b>	<b>26,082.7</b>	<b>24,080.7</b>
Foreign Assets (MA)	37,001.0	35,986.4	34,705.8	37,255.1	36,537.2	35,842.8
(-) Foreign Liabilities (MA)	20,514.6	20,518.5	20,514.4	20,818.3	21,048.4	21,054.1
Foreign Assets (CoB)	11,216.3	12,956.8	11,870.5	11,887.7	12,539.0	11,103.2
(-) Foreign Liabilities (CoB)	2,340.6	2,452.2	2,240.0	2,242.6	1,945.2	1,811.2
<b>Domestic Credit</b>	<b>38,311.1</b>	<b>38,784.5</b>	<b>39,924.8</b>	<b>39,473.3</b>	<b>42,553.3</b>	<b>40,823.9</b>
Claims on General Government (net)	14,752.8	15,463.3	17,168.3	14,662.7	16,483.2	15,143.8
Claims on General Government (MA)	20,269.1	20,261.7	20,195.2	20,399.8	20,453.8	20,313.6
(-) General Government Deposits (MA)	4,635.3	3,854.9	2,121.1	4,792.5	3,171.9	4,448.4
Claims on General Government (CoB)	445.5	431.3	431.3	422.7	485.4	619.8
(-) General Government Deposits (CoB)	1,326.5	1,374.9	1,337.2	1,367.3	1,284.1	1,341.1
Claims on Public Corporations (MA)	0.0	0.0	0.0	0.0	0.0	0.0
Claims on Public Corporations (CoB)	1,694.5	2,125.2	2,199.0	2,269.7	2,433.2	2,288.3
Claims on Private Sector (MA)	137.7	143.2	159.3	169.7	174.1	177.0
Claims on Private Sector (CoB)	21,676.7	20,942.1	20,302.8	22,266.1	23,225.6	23,143.2
Claims on NBFIs (MA)	0.0	0.0	0.0	0.0	0.0	0.0
Claims on NBFIs (CoB)	49.3	110.8	95.5	105.1	237.3	71.5
<b>Money</b>	<b>44,475.9</b>	<b>45,766.3</b>	<b>46,745.2</b>	<b>47,272.7</b>	<b>49,880.7</b>	<b>48,287.7</b>
Currency Outside Banks (MA)	6,482.6	6,490.7	6,672.4	6,436.0	6,495.4	6,474.7
Liberian Currency in Circulation (MA)	8,298.0	8,248.4	8,197.7	8,096.0	8,088.8	8,147.2
(-) Currency Holdings (CoB)	1,815.3	1,757.7	1,525.3	1,659.9	1,593.4	1,672.5
<b>Demand Deposits</b>	<b>24,216.3</b>	<b>24,533.5</b>	<b>25,620.0</b>	<b>25,983.5</b>	<b>28,137.0</b>	<b>26,845.2</b>
Demand Deposits (MA)	381.4	439.3	453.1	507.1	510.5	202.2
Demand Deposits (CoB)	23,834.9	24,094.2	25,166.9	25,476.4	27,626.6	26,643.0
<b>Other Deposits</b>	<b>13,777.0</b>	<b>14,742.1</b>	<b>14,452.8</b>	<b>14,853.1</b>	<b>15,248.2</b>	<b>14,967.8</b>
Other Deposits (MA)	337.4	335.6	358.6	557.6	546.7	65.4
Time and Savings Deposits (CoB)	13,439.6	14,406.5	14,094.2	14,295.5	14,701.5	14,902.4
<b>Bonds and Securities (CoB)</b>	<b>0.0</b>	<b>0.0</b>	<b>0.0</b>	<b>0.0</b>	<b>0.0</b>	<b>0.0</b>
<b>Restricted Deposits</b>	<b>43.7</b>	<b>43.7</b>	<b>43.7</b>	<b>43.7</b>	<b>43.7</b>	<b>43.7</b>
<b>Capital Accounts</b>	<b>27,645.7</b>	<b>27,504.7</b>	<b>27,636.7</b>	<b>28,067.4</b>	<b>28,126.1</b>	<b>28,225.4</b>
Capital Accounts (MA)	16,104.9	15,979.5	15,836.0	16,076.7	15,997.2	16,101.7
Capital Accounts (CoB)	11,540.8	11,525.2	11,800.7	11,990.7	12,128.9	12,123.8
<b>Other Items (net)</b>	<b>(8,154.7)</b>	<b>(8,222.1)</b>	<b>(10,320.1)</b>	<b>(9,270.9)</b>	<b>(8,867.7)</b>	<b>(11,586.8)</b>
Unclassified Liabilities (MA)	12,862.1	12,811.0	12,810.5	12,829.6	13,110.9	13,176.0
(-) Unclassified Assets (MA)	16,871.8	16,873.2	17,190.1	17,411.9	17,887.4	17,887.4
(-) Unclassified Assets (CoB)	7,696.8	8,133.0	9,329.4	8,659.5	8,693.6	10,530.4
Unclassified Liabilities (CoB)	5,353.4	5,962.0	5,079.4	5,060.7	5,656.1	5,491.5
Commercial Banks' Deposits (MA)	13,552.7	13,434.9	14,297.5	13,950.6	14,733.1	13,551.9
(-) Reserves (CoB)	15,377.1	15,121.8	15,995.9	15,816.7	16,489.9	15,789.7
Currency Holdings (CoB)	1,815.3	1,757.7	1,525.3	1,659.9	1,593.4	1,672.5
Liabilities to Central Bank (CoB)	1,227.1	912.7	1,412.8	1,913.7	1,693.1	2,164.8
(-) Claims on Domestic Banks (MA)	2,374.2	2,331.4	2,312.7	2,366.4	2,387.5	2,535.1
(-) Claims on Central Bank of Liberia (CoB)	931.7	931.7	931.7	944.0	956.4	956.4
(-) Unbalanced Items	286.2	290.6	314.1	513.2	500.5	55.7
<b>Vertical Check</b>	<b>0.0</b>	<b>(0.0)</b>	<b>0.0</b>	<b>(0.0)</b>	<b>(0.0)</b>	<b>0.0</b>

Source : Central Bank of Liberia, Monrovia, Liberia.

**MONEY AND BANKING**
**CENTRAL BANK OF LIBERIA**
**1.1b: Depository Corporations Survey -2013 Cont'd**
*Millions of Liberian Dollars*

	<b>Jul-13</b>	<b>Aug-13</b>	<b>Sep-13</b>	<b>Oct-13</b>	<b>Nov-13</b>	<b>Dec-13</b>
<b>Foreign Assets (net)</b>	<b>22,554.4</b>	<b>23,119.1</b>	<b>20,476.2</b>	<b>21,824.4</b>	<b>24,247.1</b>	<b>28,359.4</b>
Foreign Assets (MA)	34,819.1	36,091.2	36,699.6	36,998.8	36,926.8	40,709.5
(-) Foreign Liabilities (MA)	21,328.2	21,875.9	22,014.2	22,287.0	22,424.0	22,699.2
Foreign Assets (CoB)	10,878.7	10,878.7	7,796.4	9,332.0	12,526.0	12,104.6
(-) Foreign Liabilities (CoB)	1,815.2	1,974.9	2,005.6	2,219.3	2,781.7	1,755.4
<b>Domestic Credit</b>	<b>44,812.1</b>	<b>44,444.5</b>	<b>46,277.0</b>	<b>47,809.7</b>	<b>48,754.4</b>	<b>48,833.8</b>
Claims on General Government (net)	17,041.4	16,659.1	16,750.0	16,775.8	17,322.9	17,308.6
Claims on General Government (MA)	20,822.5	21,336.1	21,464.5	21,721.3	21,849.7	21,776.5
(-) General Government Deposits (MA)	3,332.4	4,351.9	5,104.4	5,226.5	5,030.3	5,497.1
Claims on General Government (CoB)	821.6	821.6	1,570.6	1,479.7	1,780.4	1,800.2
(-) General Government Deposits (CoB)	1,270.4	1,146.8	1,180.7	1,198.7	1,276.9	771.0
Claims on Public Corporations (MA)	0.0	0.0	0.0	0.0	0.0	0.0
Claims on Public Corporations (CoB)	2,472.5	2,472.5	2,794.3	2,907.9	2,983.6	1,862.6
Claims on Private Sector (MA)	151.2	165.9	169.4	175.5	175.9	174.9
Claims on Private Sector (CoB)	25,054.2	25,054.2	26,461.5	27,840.0	28,159.1	29,373.1
Claims on NBFIs (MA)	0.0	0.0	0.0	0.0	0.0	0.0
Claims on NBFIs (CoB)	92.9	92.9	101.8	110.4	112.9	114.6
<b>Money</b>	<b>49,605.4</b>	<b>50,286.7</b>	<b>49,540.1</b>	<b>49,472.2</b>	<b>52,967.1</b>	<b>55,123.7</b>
Currency Outside Banks (MA)	6,411.5	6,692.1	6,558.9	6,773.4	7,172.3	8,271.7
Liberian Currency in Circulation (MA)	8,244.0	8,524.6	8,513.8	8,562.2	8,600.6	9,468.0
(-) Currency Holdings (CoB)	1,832.5	1,832.5	1,954.9	1,788.8	1,428.3	1,196.2
<b>Demand Deposits</b>	<b>28,037.8</b>	<b>28,510.0</b>	<b>27,344.6</b>	<b>27,221.8</b>	<b>29,588.2</b>	<b>30,562.0</b>
Demand Deposits (MA)	210.1	233.1	255.1	282.6	159.3	167.2
Demand Deposits (CoB)	27,827.6	28,276.9	27,089.5	26,939.2	29,428.9	30,394.8
<b>Other Deposits</b>	<b>15,156.1</b>	<b>15,084.6</b>	<b>15,636.6</b>	<b>15,477.0</b>	<b>16,206.6</b>	<b>16,289.9</b>
Other Deposits (MA)	149.8	49.3	53.6	65.8	65.2	37.6
Time and Savings Deposits (CoB)	15,006.3	15,035.2	15,583.1	15,411.2	16,141.5	16,252.3
<b>Bonds and Securities (CoB)</b>	<b>0.0</b>	<b>0.0</b>	<b>0.0</b>	<b>0.0</b>	<b>0.0</b>	<b>0.0</b>
<b>Restricted Deposits</b>	<b>43.7</b>	<b>43.7</b>	<b>43.7</b>	<b>43.7</b>	<b>43.7</b>	<b>43.7</b>
<b>Capital Accounts</b>	<b>28,813.2</b>	<b>29,253.7</b>	<b>29,381.0</b>	<b>29,439.0</b>	<b>29,806.0</b>	<b>29,752.4</b>
Capital Accounts (MA)	16,494.1	16,897.1	16,981.9	17,199.4	17,259.2	17,186.9
Capital Accounts (CoB)	12,319.1	12,356.6	12,399.1	12,239.6	12,546.9	12,565.5
<b>Other Items (net)</b>	<b>(10,946.0)</b>	<b>(11,971.1)</b>	<b>(12,158.0)</b>	<b>(9,255.0)</b>	<b>(9,750.1)</b>	<b>(7,688.9)</b>
Unclassified Liabilities (MA)	13,361.1	14,684.8	14,788.5	15,122.6	15,167.6	16,298.0
(-) Unclassified Assets (MA)	18,331.2	18,727.3	18,823.7	19,039.9	19,173.9	19,388.1
(-) Unclassified Assets (CoB)	8,845.6	8,845.6	9,295.6	9,192.5	8,968.3	8,941.7
Unclassified Liabilities (CoB)	4,331.2	2,959.5	2,378.0	4,797.6	4,078.6	5,611.7
Commercial Banks' Deposits (MA)	14,038.5	12,954.2	12,698.3	12,467.1	12,729.6	13,007.1
(-) Reserves (CoB)	15,646.0	15,646.0	14,435.1	14,341.4	13,696.6	15,075.7
Currency Holdings (CoB)	1,832.5	1,832.5	1,954.9	1,788.8	1,428.3	1,196.2
Liabilities to Central Bank (CoB)	2,173.1	2,993.0	2,750.8	3,329.8	2,904.1	2,853.3
(-) Claims on Domestic Banks (MA)	3,044.2	3,260.9	3,262.8	3,288.5	3,320.1	2,320.8
(-) Claims on Central Bank of Liberia (CoB)	956.4	956.4	956.4	956.4	956.4	956.4
(-) Unbalanced Items	141.0	41.0	44.9	57.7	57.0	27.5
<b>Vertical Check</b>	<b>0.0</b>	<b>0.0</b>	<b>0.0</b>	<b>(0.0)</b>	<b>(0.0)</b>	<b>(0.0)</b>

*NBFIs: Non-Bank Financial Institutions*
*Source: Central Bank of Liberia, Monrovia, Liberia.*



**MONEY AND BANKING**

CENTRAL BANK OF LIBERIA

**1.1c: Depository Corporations Survey -2014**
*Millions of Liberian Dollars*

	Jan-14	Feb-14	Mar-14	Apr-14	May-14	Jun-14
<b>Foreign Assets (net)</b>	<b>24,833.0</b>	<b>24,287.3</b>	<b>23,515.4</b>	<b>29,060.4</b>	<b>28,857.47</b>	<b>28,138.10</b>
Foreign Assets (MA)	40,096.2	40,492.7	40,012.4	40,670.3	40,824.42	41,432.29
(-) Foreign Liabilities (MA)	22,149.0	22,974.6	23,525.8	24,074.8	23,808.76	24,982.22
Foreign Assets (CoB)	8,972.7	8,880.2	9,193.2	14,593.2	13,869.73	13,809.48
(-) Foreign Liabilities (CoB)	2,086.9	2,111.0	2,164.4	2,128.3	2,027.92	2,121.46
<b>Domestic Credit</b>	<b>48,644.9</b>	<b>51,397.3</b>	<b>56,186.2</b>	<b>55,944.1</b>	<b>52,722.27</b>	<b>54,333.08</b>
Claims on General Government (net)	16,491.9	18,573.1	22,112.2	21,863.0	18,810.14	18,746.35
Claims on General Government (MA)	21,270.9	22,029.2	22,534.8	23,040.4	22,528.10	23,436.73
(-) General Government Deposits (MA)	6,458.5	5,989.7	3,040.5	3,263.9	4,670.00	6,062.35
Claims on General Government (CoB)	2,381.8	3,197.7	3,290.4	3,000.7	1,857.68	2,277.66
(-) General Government Deposits (CoB)	702.3	664.2	672.6	914.2	905.64	905.70
Claims on Public Corporations (MA)	0.0	0.0	0.0	0.0	-	-
Claims on Public Corporations (CoB)	1,763.1	1,862.4	2,011.7	2,320.6	2,036.04	2,088.64
Claims on Private Sector (MA)	177.1	178.1	178.6	239.4	264.76	280.04
Claims on Private Sector (CoB)	30,100.0	30,669.8	31,765.4	31,400.8	31,492.19	33,092.08
Claims on NBFIs (MA)	0.0	0.0	0.0	0.0	-	-
Claims on NBFIs (CoB)	112.7	113.9	118.3	120.3	119.14	125.98
<b>Money</b>	<b>51,931.4</b>	<b>53,652.0</b>	<b>54,577.3</b>	<b>54,396.7</b>	<b>52,623.40</b>	<b>52,477.69</b>
Currency Outside Banks (MA)	7,487.8	7,345.9	7,706.2	7,728.3	7,639.75	7,446.50
Liberian Currency in Circulation (MA)	8,592.2	8,560.8	8,820.2	8,873.2	9,023.65	9,029.34
(-) Currency Holdings (CoB)	1,104.3	1,215.0	1,114.0	1,144.9	1,383.89	1,582.85
<b>Demand Deposits</b>	<b>28,651.9</b>	<b>29,470.7</b>	<b>29,605.9</b>	<b>29,915.0</b>	<b>27,690.26</b>	<b>27,408.24</b>
Demand Deposits (MA)	166.0	255.2	250.5	316.1	356.17	454.88
Demand Deposits (CoB)	28,486.0	29,215.5	29,355.4	29,598.9	27,334.09	26,953.36
<b>Other Deposits</b>	<b>15,791.6</b>	<b>16,835.4</b>	<b>17,265.3</b>	<b>17,265.3</b>	<b>17,293.39</b>	<b>17,622.96</b>
Other Deposits (MA)	49.0	27.2	38.8	178.7	52.78	72.17
Time and Savings Deposits (CoB)	15,742.6	16,808.2	17,226.5	16,574.7	17,240.61	17,550.78
<b>Bonds and Securities (CoB)</b>	<b>0.0</b>	<b>0.0</b>	<b>0.0</b>	<b>0.0</b>	<b>-</b>	<b>-</b>
<b>Restricted Deposits</b>	<b>44.0</b>	<b>44.0</b>	<b>43.7</b>	<b>24.9</b>	<b>24.36</b>	<b>24.36</b>
<b>Capital Accounts</b>	<b>29,038.6</b>	<b>30,106.7</b>	<b>30,842.6</b>	<b>31,185.2</b>	<b>30,917.22</b>	<b>32,310.73</b>
Capital Accounts (MA)	16,568.2	17,178.4	17,539.3	17,840.0	17,459.06	18,366.98
Capital Accounts (CoB)	12,470.4	12,928.3	13,303.4	13,345.2	13,458.17	13,943.75
<b>Other Items (net)</b>	<b>7,591.7</b>	<b>(8,090.9)</b>	<b>(5,723.3)</b>	<b>(423.6)</b>	<b>(1,932.47)</b>	<b>(2,269.42)</b>
Unclassified Liabilities (MA)	15,851.2	16,545.8	19,435.7	19,173.9	17,850.97	18,750.56
(-) Unclassified Assets (MA)	19,084.6	19,721.9	20,284.7	20,656.5	20,630.21	21,903.88
(-) Unclassified Assets (CoB)	7,742.4	8,563.7	9,140.2	9,545.9	9,622.30	10,678.90
Unclassified Liabilities (CoB)	4,916.6	4,620.4	5,456.5	10,966.6	11,519.83	11,819.42
Commercial Banks' Deposits (MA)	13,041.2	13,150.1	12,647.3	13,200.1	13,471.79	11,888.53
(-) Reserves (CoB)	14,433.9	14,222.9	13,665.2	13,579.7	14,389.51	13,311.40
Currency Holdings (CoB)	1,104.3	1,215.0	1,114.0	1,144.9	1,383.89	1,582.85
Liabilities to Central Bank (CoB)	2,082.4	2,143.6	1,986.7	2,014.2	1,955.95	2,087.44
(-) Claims on Domestic Banks (MA)	2,255.2	2,268.3	2,294.9	2,304.3	2,431.78	2,539.25
(-) Claims on Central Bank of Liberia (CoB)	1,005.8	1,005.8	1,005.8	1,005.8	1,079.96	22.13
(-) Unbalanced Items	39.1	16.9	27.4	168.9	38.88	57.33
<b>Vertical Check</b>	<b>0.0</b>	<b>(0.0)</b>	<b>(0.0)</b>	<b>(0.0)</b>	<b>(0.0)</b>	<b>(0.0)</b>

*NBFIs: Non-Bank Financial Institutions*
*Source : Central Bank of Liberia, Monrovia, Liberia.*

**MONEY AND BANKING**

**CENTRAL BANK OF LIBERIA**

**1.2a: Sectoral Balance Sheet of Other Depository Corporations - 2012**

*'Thousands of Liberian Dollars*

	Jan-12	Feb-12	Mar-12	Apr-12	May-12	Jun-12
<b>Assets</b>						
Reserves	13,831,055	13,768,512	13,110,949	14,075,764	15,920,324	15,185,457
<i>of which: Cash on Hand: Coins/LD Notes</i>	987,278	1,171,834	1,245,335	1,445,990	1,275,685	1,395,454
Foreign Assets	10,404,765	11,847,634	12,626,193	10,353,460	10,043,327	11,609,922
Claims on General Government	430,004	416,127	421,824	421,824	421,825	413,501
Claims on Public Corporations	1,053,907	1,187,481	1,279,289	1,264,635	1,354,950	1,456,990
Claims on Private Sector	18,238,439	18,660,574	18,946,865	19,203,253	20,353,837	19,484,480
Claims on Central Bank of Liberia	919,321	919,321	925,500	925,500	950,214	931,678
Claims on NBFIs	87,825	85,813	114,747	114,525	108,947	113,028
Unclassified Assets	9,981,734	8,656,472	8,115,333	8,145,362	7,704,897	10,083,288
<b>Total Assets</b>	<b>54,947,049</b>	<b>55,541,933</b>	<b>55,540,699</b>	<b>54,504,320</b>	<b>56,858,321</b>	<b>59,278,344</b>
	Jan-12	Feb-12	Mar-12	Apr-12	May-12	Jun-12
<b>Liabilities</b>						
Demand Deposits	23,174,293	22,112,732	19,475,654	22,026,608	24,222,299	24,096,153
Time and Savings Deposits	12,306,365	11,858,751	11,741,653	11,835,954	12,040,651	11,885,860
Restricted Deposits	29,290	28,847	28,817	28,028	27,564	26,906
Bonds and Securities	0	0	0	0	0	0
Foreign Liabilities	761,966	2,592,737	2,880,560	2,631,190	2,590,570	2,494,737
Government Deposits	1,038,625	1,054,502	1,124,998	1,120,003	1,206,730	1,322,119
Liabilities to Central Bank of Liberia	110,250	109,500	111,000	111,000	220,154	216,512
Capital Accounts	10,531,420	10,585,266	10,565,305	10,667,231	11,059,206	11,013,681
Unclassified Liabilities	6,994,839	7,199,598	9,612,712	6,084,307	5,491,148	8,222,377
<b>Total Liabilities</b>	<b>54,947,049</b>	<b>55,541,933</b>	<b>55,540,699</b>	<b>54,504,320</b>	<b>56,858,321</b>	<b>59,278,344</b>
<b>Vertical Check (Assets/Liabilities)</b>	<b>0</b>	<b>0</b>	<b>0</b>	<b>0</b>	<b>0</b>	<b>0</b>

*NBFIs: Non-Bank Financial Institutions*

*Source : Central Bank of Liberia, Monrovia, Liberia.*

**MONEY AND BANKING**

**CENTRAL BANK OF LIBERIA**

**1.2a: Sectoral Balance Sheet of Other Depository Corporations - 2012 (contd.)**

*'Thousands of Liberian Dollars*

	<b>Jul-12</b>	<b>Aug-12</b>	<b>Sep-12</b>	<b>Oct-12</b>	<b>Nov-12</b>	<b>Dec-12</b>
<b>Assets</b>						
Reserves	15,132,416	15,021,916	15,362,288	14,573,670	15,519,005	14,568,153
<i>of which: Cash on Hand: Coins/LD Notes</i>	1,576,057	1,627,401	1,575,709	1,471,275	1,134,297	1,322,873
Foreign Assets	10,525,035	11,313,088	11,668,822	11,017,551	10,874,673	11,672,979
Claims on General Government	402,400	402,401	405,177	391,528	380,652	433,549
Claims on Public Corporations	1,484,517	1,503,178	1,538,676	1,572,843	1,565,902	1,614,450
Claims on Private Sector	19,575,871	19,936,134	20,699,472	19,984,863	20,176,029	20,277,420
Claims on Central Bank of Liberia	919,321	919,321	913,142	906,964	906,964	906,964
Claims on NBFIs	205,387	144,348	165,095	156,719	157,277	158,161
Unclassified Assets	9,738,715	9,335,069	9,395,002	9,409,243	8,173,371	6,887,880
<b>Total Assets</b>	<b>57,983,662</b>	<b>58,575,455</b>	<b>60,147,674</b>	<b>58,013,381</b>	<b>57,753,873</b>	<b>56,519,555</b>
	<b>Jul-12</b>	<b>Aug-12</b>	<b>Sep-12</b>	<b>Oct-12</b>	<b>Nov-12</b>	<b>Dec-12</b>
<b>Liabilities</b>						
Demand Deposits	22,786,193	22,221,006	23,351,284	21,812,911	22,065,202	22,841,372
Time and Savings Deposits	11,860,501	13,319,971	13,646,814	13,918,081	13,818,491	13,273,224
Restricted Deposits	26,494	25,695	24,896	24,896	24,896	24,896
Bonds and Securities	0	0	0	0	0	0
Foreign Liabilities	2,469,716	2,479,710	2,391,301	2,684,487	2,689,593	2,397,612
Government Deposits	1,289,620	4,793,803	1,432,867	1,489,873	1,213,035	1,233,316
Liabilities to Central Bank of Liberia	210,743	212,230	195,442	196,004	562,173	982,422
Capital Accounts	10,882,784	10,779,301	11,115,771	11,099,672	11,893,234	11,108,330
Unclassified Liabilities	8,457,612	4,743,740	7,989,299	6,787,455	5,487,247	4,658,383
<b>Total Liabilities</b>	<b>57,983,662</b>	<b>58,575,455</b>	<b>60,147,674</b>	<b>58,013,381</b>	<b>57,753,873</b>	<b>56,519,555</b>
<b>Vertical Check (Assets/Liabilities)</b>	<b>0</b>	<b>0</b>	<b>0</b>	<b>0</b>	<b>0</b>	<b>0</b>

*NBFIs: Non-Bank Financial Institutions*

*Source : Central Bank of Liberia, Monrovia, Liberia.*

**MONEY AND BANKING**

**CENTRAL BANK OF LIBERIA**

**1.2b: Sectoral Balance Sheet of Other Depository Corporations - 2013**

*'Thousands of Liberian Dollars*

	<b>Jan-13</b>	<b>Feb-13</b>	<b>Mar-13</b>	<b>Apr-13</b>	<b>May-13</b>	<b>Jun-13</b>
<b>Assets</b>						
Reserves	15,377,126	15,121,804	15,995,900	15,816,743	16,489,883	15,789,743
<i>of which: Cash on Hand: Coins/LD Notes</i>	1,815,339	1,757,652	1,525,267	1,659,921	1,593,369	1,672,474
Foreign Assets	11,216,279	12,956,757	11,870,534	11,887,715	12,539,038	11,103,211
Claims on General Government	445,507	431,313	431,312	422,720	485,401	619,754
Claims on Public Corporations	1,694,500	2,125,180	2,198,984	2,269,671	2,433,175	2,288,324
Claims on Private Sector	21,676,739	20,942,096	20,302,813	22,266,146	23,225,587	23,143,238
Claims on Central Bank of Liberia	931,678	931,678	931,678	944,035	956,393	956,393
Claims on NBFIs	49,260	110,823	95,454	105,135	237,301	71,544
Unclassified Assets	7,696,752	8,133,022	9,329,387	8,659,547	8,693,566	10,530,376
<b>Total Assets</b>	<b>59,087,842</b>	<b>60,752,672</b>	<b>61,156,063</b>	<b>62,371,713</b>	<b>65,060,344</b>	<b>64,502,581</b>
	<b>Jan-13</b>	<b>Feb-13</b>	<b>Mar-13</b>	<b>Apr-13</b>	<b>May-13</b>	<b>Jun-13</b>
<b>Liabilities</b>						
Demand Deposits	23,834,929	24,094,236	25,166,896	25,476,365	27,626,582	26,643,021
Time and Savings Deposits	13,439,611	14,406,542	14,094,179	14,295,515	14,701,511	14,902,384
Restricted Deposits	24,896	24,896	24,896	24,896	24,896	24,896
Bonds and Securities	0	0	0	0	0	0
Foreign Liabilities	2,340,600	2,452,179	2,239,982	2,242,604	1,945,172	1,811,200
Government Deposits	1,326,536	1,374,924	1,337,161	1,367,299	1,284,111	1,341,090
Liabilities to Central Bank of Liberia	1,227,074	912,731	1,412,807	1,913,706	1,693,077	2,164,769
Capital Accounts	11,540,798	11,525,174	11,800,705	11,990,661	12,128,890	12,123,754
Unclassified Liabilities	5,353,397	5,961,989	5,079,436	5,060,667	5,656,105	5,491,468
<b>Total Liabilities</b>	<b>59,087,842</b>	<b>60,752,672</b>	<b>61,156,063</b>	<b>62,371,713</b>	<b>65,060,344</b>	<b>64,502,581</b>
<b>Vertical Check (Assets/Liabilities)</b>	<b>0</b>	<b>0</b>	<b>0</b>	<b>0</b>	<b>0</b>	<b>0</b>

*NBFIs: Non-Bank Financial Institutions*

*Source : Central Bank of Liberia, Monrovia, Liberia.*

**MONEY AND BANKING**

**CENTRAL BANK OF LIBERIA**

**1.2b: Sectoral Balance Sheet of Other Depository Corporations - 2013 Cont'd**

*'Thousands of Liberian Dollars*

	<b>Jul-13</b>	<b>Aug-13</b>	<b>Sep-13</b>	<b>Oct-13</b>	<b>Nov-13</b>	<b>Dec-13</b>
<b>Assets</b>						
Reserves	15,645,952	15,645,952	14,435,066	14,341,388	13,696,644	15,075,748
<i>of which: Cash on Hand: Coins/LD Notes</i>	1,832,496	1,832,496	1,954,931	1,788,805	1,428,325	1,196,247
Foreign Assets	10,878,707	10,878,707	7,796,449	9,332,032	12,526,038	12,104,593
Claims on General Government	821,644	821,644	1,570,614	1,479,721	1,780,421	1,800,161
Claims on Public Corporations	2,472,451	2,472,451	2,794,285	2,907,889	2,983,587	1,862,638
Claims on Private Sector	25,054,167	25,054,167	26,461,470	27,839,995	28,159,092	29,373,112
Claims on Central Bank of Liberia	956,393	956,393	956,393	956,393	956,393	956,393
Claims on NBFIs	92,876	92,876	101,808	110,435	112,891	114,589
Unclassified Assets	8,845,578	8,845,578	9,295,565	9,192,508	8,968,259	8,941,691
<b>Total Assets</b>	<b>64,767,768</b>	<b>64,767,768</b>	<b>63,411,650</b>	<b>66,160,360</b>	<b>69,183,323</b>	<b>70,228,924</b>
	<b>Jul-13</b>	<b>Aug-13</b>	<b>Sep-13</b>	<b>Oct-13</b>	<b>Nov-13</b>	<b>Dec-13</b>
<b>Liabilities</b>						
Demand Deposits	27,827,645	28,276,862	27,089,482	26,939,211	29,428,862	30,394,810
Time and Savings Deposits	15,006,343	15,035,243	15,583,067	15,411,205	16,141,466	16,252,347
Restricted Deposits	24,896	24,896	24,896	24,896	24,896	24,896
Bonds and Securities	0	0	0	0	0	0
Foreign Liabilities	1,815,156	1,974,890	2,005,618	2,219,323	2,781,662	1,755,440
Government Deposits	1,270,372	1,146,752	1,180,748	1,198,662	1,276,888	770,984
Liabilities to Central Bank of Liberia	2,173,066	2,993,005	2,750,795	3,329,847	2,904,051	2,853,287
Capital Accounts	12,319,099	12,356,583	12,399,062	12,239,604	12,546,893	12,565,490
Unclassified Liabilities	4,331,190	2,959,537	2,377,981	4,797,611	4,078,605	5,611,670
<b>Total Liabilities</b>	<b>64,767,768</b>	<b>64,767,768</b>	<b>63,411,650</b>	<b>66,160,360</b>	<b>69,183,323</b>	<b>70,228,924</b>
<b>Vertical Check (Assets/Liabilities)</b>	<b>0</b>	<b>0</b>	<b>0</b>	<b>0</b>	<b>0</b>	<b>0</b>

*NBFIs: Non-Bank Financial Institutions*

*Source : Central Bank of Liberia, Monrovia, Liberia.*

**MONEY AND BANKING**

CENTRAL BANK OF LIBERIA

**1.2c: Sectoral Balance Sheet of Other Depository Corporations - 2014**

*'Thousands of Liberian Dollars*

	Jan-14	Feb-14	Mar-14	Apr-14	May-14	Jun-14
<b>Assets</b>						
Reserves	14,433,866	14,222,865	13,665,229	13,579,710	14,389,514.43	13,311,399
<i>of which: Cash on Hand: Coins/LD Notes</i>	1,104,335	1,214,974	1,113,964	1,144,901	1,383,890.78	1,582,847
Foreign Assets	8,972,655	8,880,188	9,193,198	14,593,162	13,869,728.73	13,809,482
Claims on General Government	2,381,753	3,197,732	3,290,435	3,000,736	1,857,678.18	2,277,665
Claims on Public Corporations	1,763,100	1,862,398	2,011,744	2,320,592	2,036,042.15	2,088,637
Claims on Private Sector	30,099,999	30,669,820	31,765,351	31,400,767	31,492,189.81	33,092,083
Claims on Central Bank of Liberia	1,005,821	1,005,821	1,005,821	1,005,822	1,079,964.85	22,129
Claims on NBFIs	112,741	113,886	118,290	120,335	119,137.33	125,977
Unclassified Assets	7,742,380	8,563,742	9,140,168	9,545,864	9,622,302.32	10,678,896
<b>Total Assets</b>	<b>66,512,317</b>	<b>68,516,451</b>	<b>70,190,237</b>	<b>75,566,990</b>	<b>74,466,557.79</b>	<b>75,406,268</b>
	Jan-14	Feb-14	Mar-14	Apr-14	May-14	Jun-14
<b>Liabilities</b>						
Demand Deposits	28,485,958	29,215,524	29,355,386	29,598,870	27,334,089.97	26,953,355
Time and Savings Deposits	15,742,600	16,808,218	17,226,472	16,574,663	17,240,614.44	17,550,781
Restricted Deposits	25,218	25,218	24,896	24,896	24,358.74	24,359
Bonds and Securities	0	0	0	0	0	0
Foreign Liabilities	2,086,909	2,110,997	2,164,369	2,128,305	2,027,920.57	2,121,457
Government Deposits	702,254	664,174	672,558	914,207	905,635.37	905,703
Liabilities to Central Bank of Liberia	2,082,378	2,143,580	1,986,660	2,014,229	1,955,945.53	2,087,444
Capital Accounts	12,470,401	12,928,315	13,303,356	13,345,200	13,458,165.28	13,943,750
Unclassified Liabilities	4,916,598	4,620,425	5,456,541	10,966,620	11,519,827.89	11,819,418
<b>Total Liabilities</b>	<b>66,512,317</b>	<b>68,516,451</b>	<b>70,190,237</b>	<b>75,566,990</b>	<b>74,466,557.79</b>	<b>75,406,268</b>
<b>Vertical Check (Assets/Liabilities)</b>	<b>0</b>	<b>0</b>	<b>0</b>	<b>0</b>	<b>0</b>	<b>0</b>

*NBFIs: Non-Bank Financial Institutions*

*Source : Central Bank of Liberia, Monrovia, Liberia.*

**MONEY AND BANKING**

**CENTRAL BANK OF LIBERIA**

**1.3a: Sectoral Balance Sheet of Central Bank of Liberia -2012**

*'Thousands of Liberian Dollars*

	Jan-12	Feb-12	Mar-12	Apr-12	May-12	Jun-12
<b>Assets</b>						
Foreign Assets	38,999,997	38,195,091	38,970,809	39,755,203	39,613,226	37,821,837
Claims on General Government	19,225,445	19,226,073	19,350,280	19,350,329	19,848,388	20,964,717
Claims on Public Corporations	0	0	0	0	0	0
Claims on Private Sector	426,010	341,510	345,106	347,260	361,194	354,938
Claims on Domestic Banks	652,344	661,263	824,255	732,115	820,777	955,528
Claims on NBFIs	0	0	0	0	0	0
Unclassified Assets	16,406,446	16,567,422	16,620,978	16,628,780	17,044,412	17,239,208
<b>Total Assets</b>	<b>75,710,242</b>	<b>74,991,360</b>	<b>76,111,428</b>	<b>76,813,687</b>	<b>77,687,997</b>	<b>77,336,229</b>
	Jan-12	Feb-12	Mar-12	Apr-12	May-12	Jun-12
<b>Liabilities</b>						
Reserve Money	20,999,141	21,173,157	21,264,951	21,359,720	21,530,525	20,942,566
Other Deposits	0	0	0	0	0	0
Restricted Reserves	18,781	18,781	18,781	18,781	18,781	18,781
Foreign Liabilities	21,103,925	21,104,047	21,247,448	21,261,937	21,821,960	21,391,007
Liabilities to General Government	4,933,712	4,098,504	4,816,803	5,736,334	4,116,452	5,679,670
Capital Accounts	16,963,083	16,980,537	17,016,628	16,830,355	17,729,389	16,961,766
Unclassified Liabilities	11,691,600	11,616,333	11,746,817	11,606,561	12,470,890	12,342,439
<b>Total Liabilities</b>	<b>75,710,242</b>	<b>74,991,360</b>	<b>76,111,428</b>	<b>76,813,687</b>	<b>77,687,997</b>	<b>77,336,229</b>
<b>Vertical Check (Assets/Liabilities)</b>	<b>0</b>	<b>0</b>	<b>0</b>	<b>0</b>	<b>0</b>	<b>0</b>

*NBFIs: Non-Bank Financial Institutions*

*Source : Central Bank of Liberia, Monrovia, Liberia.*

**MONEY AND BANKING**

**CENTRAL BANK OF LIBERIA**

**1.3a: Sectoral Balance Sheet of Central Bank of Liberia -2012 cont'd**

*'Thousands of Liberian Dollars*

	Jul-12	Aug-12	Sep-12	Oct-12	Nov-12	Dec-12
<b>Assets</b>						
Foreign Assets	36,420,307	34,847,168	35,033,705	34,684,618	34,432,770	36,108,175
Claims on General Government	20,695,832	20,696,228	20,561,629	20,427,102	20,427,552	19,749,739
Claims on Public Corporations	0	0	0	0	0	0
Claims on Private Sector	96,271	102,553	101,325	115,387	123,054	137,521
Claims on Domestic Banks	649,849	714,114	693,364	696,886	1,416,609	1,947,132
Claims on NBFIs	0	0	0	0	0	0
Unclassified Assets	17,145,150	16,414,117	16,577,768	16,573,745	16,529,871	16,466,442
<b>Total Assets</b>	<b>75,007,409</b>	<b>72,774,180</b>	<b>72,967,791</b>	<b>72,497,738</b>	<b>72,929,857</b>	<b>74,409,009</b>
	Jul-12	Aug-12	Sep-12	Oct-12	Nov-12	Dec-12
<b>Liabilities</b>						
Reserve Money	20,409,330	20,291,131	20,572,698	20,395,531	21,922,732	23,006,769
Other Deposits	0	0	0	0	0	0
Restricted Reserves	18,781	18,781	18,781	18,781	18,781	18,781
Foreign Liabilities	21,103,883	19,960,970	20,121,252	19,964,080	19,963,576	19,963,576
Liabilities to General Government	4,818,629	4,462,094	4,237,947	4,347,109	2,352,494	3,421,994
Capital Accounts	16,478,874	16,390,288	16,269,793	16,251,226	16,208,659	15,618,253
Unclassified Liabilities	12,177,912	11,650,916	11,747,321	11,521,010	12,463,615	12,379,636
<b>Total Liabilities</b>	<b>75,007,409</b>	<b>72,774,180</b>	<b>72,967,791</b>	<b>72,497,738</b>	<b>72,929,857</b>	<b>74,409,009</b>
<b>Vertical Check (Assets/Liabilities)</b>	<b>0</b>	<b>0</b>	<b>0</b>	<b>0</b>	<b>0</b>	<b>0</b>

*NBFIs: Non-Bank Financial Institutions*

*Source : Central Bank of Liberia, Monrovia, Liberia.*



**MONEY AND BANKING**

**CENTRAL BANK OF LIBERIA**

**1.3b: Sectoral Balance Sheet of Central Bank of Liberia - 2013**

*'Thousands of Liberian Dollars*

	Jan-13	Feb-13	Mar-13	Apr-13	May-13	Jun-13
<b>Assets</b>						
Foreign Assets	37,001,039	35,986,385	34,705,817	37,255,050	36,537,229	35,842,775
Claims on General Government	20,269,134	20,261,743	20,195,247	20,399,752	20,453,784	20,565,759
Claims on Public Corporations	0	0	0	0	0	0
Claims on Private Sector	137,722	143,161	159,281	169,721	174,061	181,388
Claims on Domestic Banks	2,374,155	2,331,420	2,312,673	2,366,429	2,387,481	2,535,104
Claims on NBFIs	0	0	0	0	0	0
Unclassified Assets	16,871,809	16,873,161	17,190,052	17,411,864	17,627,449	17,887,370
<b>Total Assets</b>	<b>76,653,858</b>	<b>75,595,870</b>	<b>74,563,071</b>	<b>77,602,814</b>	<b>77,180,005</b>	<b>77,012,397</b>
	Jan-13	Feb-13	Mar-13	Apr-13	May-13	Jun-13
<b>Liabilities</b>						
Reserve Money	22,518,201.72	22,413,209.42	23,262,309.31	23,066,952.62	23,832,824.22	21,946,297.89
Other Deposits	0	0	0	0	0	0
Restricted Reserves	18,781.00	18,781.00	18,781.00	18,781.00	18,781.00	18,781.00
Foreign Liabilities	20,514,583.88	20,518,459.95	20,514,369.38	20,818,290.87	21,048,373.91	21,054,077.22
Liabilities to General Government	4,635,255.51	3,854,854.26	2,121,131.48	4,792,498.35	3,171,859.54	4,448,427.95
Capital Accounts	16,104,924.25	15,979,543.51	15,836,029.20	16,076,717.69	15,997,219.66	16,368,852.57
Unclassified Liabilities	12,862,111.77	12,811,021.98	12,810,450.20	12,829,573.88	13,110,946.25	13,175,960.00
<b>Total Liabilities</b>	<b>76,653,858</b>	<b>75,595,870</b>	<b>74,563,071</b>	<b>77,602,814</b>	<b>77,180,005</b>	<b>77,012,397</b>
<b>Vertical Check (Assets/Liabilities)</b>	<b>0</b>	<b>0</b>	<b>0</b>	<b>0</b>	<b>0</b>	<b>0</b>

*NBFIs: Non-Bank Financial Institutions*

*Source : Central Bank of Liberia, Monrovia, Liberia.*

**MONEY AND BANKING**

**CENTRAL BANK OF LIBERIA**

**1.3b: Sectoral Balance Sheet of Central Bank of Liberia - 2013 Cont'd**

*'Thousands of Liberian Dollars*

	Jul-13	Aug-13	Sep-13	Oct-13	Nov-13	Dec-13
<b>Assets</b>						
Foreign Assets	34,819,052	36,091,161	36,699,588	36,998,756	36,926,775	40,709,461
Claims on General Government	20,822,543	21,336,110	21,464,502	21,721,286	21,849,678	21,776,461
Claims on Public Corporations	0	0	0	0	0	0
Claims on Private Sector	151,215	165,878	169,425	175,522	175,940	174,901
Claims on Domestic Banks	3,044,237	3,260,937	3,262,769	3,288,488	3,320,101	2,320,841
Claims on NBFIs	0	0	0	0	0	0
Unclassified Assets	18,331,192	18,727,268	18,823,739	19,039,861	19,173,866	19,388,053
<b>Total Assets</b>	<b>77,168,239</b>	<b>79,581,354</b>	<b>80,420,023</b>	<b>81,223,912</b>	<b>81,446,360</b>	<b>84,369,717</b>
	Jul-13	Aug-13	Sep-13	Oct-13	Nov-13	Dec-13
<b>Liabilities</b>						
Reserve Money	22,633,635.34	21,752,900.68	21,512,215.53	21,369,599.71	21,546,537.54	22,669,772.85
Other Deposits	0	0	0	0	0	0
Restricted Reserves	18,781.00	18,781.00	18,781.00	18,781.00	18,781.00	18,781.00
Foreign Liabilities	21,328,244.51	21,875,868.38	22,014,214.33	22,287,048.73	22,424,023.52	22,699,224.74
Liabilities to General Government	3,332,413.17	4,351,884.83	5,104,361.97	5,226,499.11	5,030,309.22	5,497,055.31
Capital Accounts	16,494,062.63	16,897,104.11	16,981,920.60	17,199,412.17	17,259,155.37	17,186,865.38
Unclassified Liabilities	13,361,102.05	14,684,815.28	14,788,529.66	15,122,571.43	15,167,553.09	16,298,017.27
<b>Total Liabilities</b>	<b>77,168,239</b>	<b>79,581,354</b>	<b>80,420,023</b>	<b>81,223,912</b>	<b>81,446,360</b>	<b>84,369,717</b>
<b>Vertical Check (Assets/Liabilities)</b>	<b>0</b>	<b>0</b>	<b>0</b>	<b>0</b>	<b>0</b>	<b>0</b>

*NBFIs: Non-Bank Financial Institutions*

*Source : Central Bank of Liberia, Monrovia, Liberia.*

**MONEY AND BANKING**

**CENTRAL BANK OF LIBERIA**

**1.3c: Sectoral Balance Sheet of Central Bank of Liberia - 2014**

*"Thousands of Liberian Dollars"*

	Jan-14	Feb-14	Mar-14	Apr-14	May-14	Jun-14
<b>Assets</b>						
Foreign Assets	40,096,247	40,492,687	40,012,386	40,670,336	40,824,418.05	41,432,294.23
Claims on General Government	21,270,894	22,029,245	22,534,813	23,040,380	22,528,096.30	23,436,731.19
Claims on Public Corporations	0	0	0	0	0	0
Claims on Private Sector	177,138	178,127	178,608	239,351	264,760.42	280,038.50
Claims on Domestic Banks	2,255,199	2,268,282	2,294,943	2,304,279	2,431,782.05	2,539,251.99
Claims on NBFIs	0	0	0	0	0	0
Unclassified Assets	19,084,630	19,721,875	20,284,660	20,656,539	20,630,210.90	21,903,876.47
<b>Total Assets</b>	<b>82,884,108</b>	<b>84,690,216</b>	<b>85,305,410</b>	<b>86,910,885</b>	<b>86,679,267.71</b>	<b>89,592,192.38</b>
	Jan-14	Feb-14	Mar-14	Apr-14	May-14	Jun-14
<b>Liabilities</b>						
Reserve Money	21,838,456.21	21,982,959.03	21,745,353	22,558,303	22,890,483.17	21,430,090.78
Other Deposits	0	0	0	0	0	0
Restricted Reserves	18,781.00	18,781.00	18,781	0	0	0
Foreign Liabilities	22,148,973.08	22,974,592.72	23,525,833	24,074,753	23,808,759.17	24,982,219.02
Liabilities to General Government	6,458,500.13	5,989,735.97	3,040,481	3,263,882	4,669,998.66	6,062,345.82
Capital Accounts	16,568,196.22	17,178,382.48	17,539,266	17,840,014	17,459,055.17	18,366,979.21
Unclassified Liabilities	15,851,201.39	16,545,764.51	19,435,696	19,173,933	17,850,971.55	18,750,557.54
<b>Total Liabilities</b>	<b>82,884,108</b>	<b>84,690,216</b>	<b>85,305,410</b>	<b>86,910,885</b>	<b>86,679,267.72</b>	<b>89,592,192.38</b>
<b>Vertical Check (Assets/Liabilities)</b>	<b>0</b>	<b>0</b>	<b>0</b>	<b>(0)</b>	<b>(0)</b>	<b>0</b>

*NBFIs: Non-Bank Financial Institutions*

*Source : Central Bank of Liberia, Monrovia, Liberia.*

**MONEY AND BANKING**

**CENTRAL BANK OF LIBERIA**

**1.4a: Commercial Banks' Loans By Economic Sector - 2012**

*Thousands of Liberian Dollars*

Sector	Jan-12		Feb-12		Mar-12		Apr-12		May-12		Jun-12	
	L\$	%	L\$	%	L\$	%	L\$	%	L\$	%	L\$	%
<b>1. Agriculture</b>	<b>703,084</b>	<b>4.4</b>	<b>744,728</b>	<b>4.4</b>	<b>643,111</b>	<b>3.7</b>	<b>766,591</b>	<b>4.4</b>	<b>701,274</b>	<b>3.8</b>	<b>654,066</b>	<b>3.7</b>
1.1 Rubber	134,712	0.8	195,706	1.2	132,439	0.8	139,756	0.8	178,109	1.0	125,122	0.7
1.2 Forestry	130,206	0.8	170,546	1.0	157,637	0.9	149,184	0.9	153,748	0.8	143,264	0.8
1.3 Fishery	155,600	1.0	114,503	0.7	153,990	0.9	154,586	0.9	147,440	0.8	167,700	0.9
1.4 Others	282,567	1.8	263,973	1.6	199,045	1.1	323,065	1.9	221,977	1.2	217,981	1.2
<b>2. Mining &amp; Quarrying</b>	<b>143,036</b>	<b>0.9</b>	<b>152,575</b>	<b>0.9</b>	<b>231,625</b>	<b>1.3</b>	<b>124,399</b>	<b>0.7</b>	<b>104,125</b>	<b>0.6</b>	<b>118,833</b>	<b>0.7</b>
2.1 Iron Ore	9,188	0.1	9,271.00	0.06	86,358	0.5	3,922.00	0.0	3,876	0.0	3,800	0.0
2.2 Quarrying	133,849	0.8	143,304	0.9	145,267	0.8	120,477	0.7	100,249	0.5	115,033	0.6
<b>3. Manufacturing</b>	<b>334,137</b>	<b>2.1</b>	<b>344,215</b>	<b>2.0</b>	<b>346,370</b>	<b>2.0</b>	<b>342,302</b>	<b>2.0</b>	<b>458,790</b>	<b>2.5</b>	<b>418,079</b>	<b>2.3</b>
<b>4. Construction</b>	<b>1,309,317</b>	<b>8.2</b>	<b>1,354,973</b>	<b>8.1</b>	<b>1,319,674</b>	<b>7.6</b>	<b>1,204,641</b>	<b>6.9</b>	<b>1,251,743</b>	<b>6.8</b>	<b>1,484,294</b>	<b>8.3</b>
4.1 Mortgage Loans	90,332	0.6	135,780	0.8	129,574	0.7	129,056	0.7	34,276	0.2	218,434	1.2
4.2 Home Improvement	67,410	0.4	61,489	0.4	60,499	0.3	35,816	0.2	120,992	0.7	15,943	0.1
4.3 Others	1,151,576	7.2	1,157,704	6.9	1,129,601	6.5	1,039,769	6.0	1,096,475	6.0	1,249,917	7.0
<b>5. Trans., Storage &amp; Comm.</b>	<b>1,189,061</b>	<b>7.5</b>	<b>1,666,421</b>	<b>9.9</b>	<b>1,747,678</b>	<b>10.0</b>	<b>1,402,254</b>	<b>8.0</b>	<b>1,500,856</b>	<b>8.2</b>	<b>1,347,240</b>	<b>7.5</b>
5.1 Transportation	515,689	3.2	1,141,727	6.8	1,094,819	6.3	786,890	4.5	827,081	4.5	784,198	4.4
5.2 Storage	-	-	-	0.0	-	-	37.00	0.0	-	-	-	-
5.3 Communication	673,372	4.2	524,694	3.1	652,859	3.7	615,327	3.5	673,775	3.7	563,042	3.2
<b>6. Trade, Hotel &amp; Rest.</b>	<b>6,859,903</b>	<b>43.0</b>	<b>7,236,069</b>	<b>43.0</b>	<b>7,452,817</b>	<b>42.7</b>	<b>7,626,558</b>	<b>43.7</b>	<b>7,634,932</b>	<b>41.6</b>	<b>7,691,398</b>	<b>43.1</b>
6.1 Diamond trade	21,683	0.1	22,630	0.1	24,198	0.1	24,938	0.1	3,930,016	21.4	24,734	0.1
6.2 Other trade	6,609,033	41.4	6,926,278	41.2	6,728,004	38.5	7,297,544	41.8	3,405,874	18.6	7,379,021	41.3
6.3 Hotels	205,739	1.3	252,056	1.5	663,116	3.8	267,505	1.5	262,185	1.4	252,916	1.4
6.4 Restaurants	23,449	0.1	35,105	0.2	37,499	0.2	36,571	0.2	36,857	0.2	34,728	0.2
<b>7. Others</b>	<b>5,407,123</b>	<b>33.9</b>	<b>5,315,753</b>	<b>31.6</b>	<b>5,726,158</b>	<b>32.8</b>	<b>5,974,479</b>	<b>34.3</b>	<b>6,690,912</b>	<b>36.5</b>	<b>6,143,449</b>	<b>34.4</b>
7.1 Services	2,454,404	15.4	2,188,195	13	2,250,095	12.9	2,612,394	15	2,301,607	12.5	1,793,111	10.0
7.2 Personal	2,326,243	14.6	2,473,726	14.7	2,612,638	15.0	2,550,893	14.6	2,592,275	14.1	2,614,985	14.6
7.3 GOL	55,206	0.3	55,197	0.3	55,881	0.3	56,179	0.3	57,395	0.3	64,832	0.4
7.4 Central Bank of Liberia	0	0	0	0.0	0	0	0	0.0	-	-	-	-
7.5 Public Corporations	370,955	2.3	373,122	2.2	414,765	2.4	413,828	2.4	275,424	1.5	298,178	1.7
7.6 Others	200,317	1.3	225,513	1.3	392,779	2.2	341,185	2.0	1,464,211	8.0	1,372,344	7.7
<b>TOTAL</b>	<b>15,945,661</b>	<b>100</b>	<b>16,814,734</b>	<b>100</b>	<b>17,467,432</b>	<b>100</b>	<b>17,441,223</b>	<b>100</b>	<b>18,342,632</b>	<b>100</b>	<b>17,857,358</b>	<b>100</b>

Source : Central Bank of Liberia, Monrovia, Liberia.

## MONEY AND BANKING

## CENTRAL BANK OF LIBERIA

**1.4a: Commercial Banks' Loans By Economic Sector - 2012 Cont'd.***Thousands of Liberian Dollars*

Sector	Jul-12		Aug-12		Sep-12		Oct-12		Nov-12		Dec-12	
	L\$	%	L\$	%	L\$	%	L\$	%	L\$	%	L\$	%
<b>1. Agriculture</b>	<b>516,583</b>	<b>2.9</b>	<b>582,405</b>	<b>3.3</b>	<b>681,743</b>	<b>3.7</b>	<b>804,912</b>	<b>4.3</b>	<b>830,431</b>	<b>4.3</b>	<b>848,755</b>	<b>4.5</b>
1.1 Rubber	144,265	0.8	95,232	0.5	131,994	0.7	207,758	1.1	233,495	1.2	126,440	0.7
1.2 Forestry	87,653	0.5	140,238	0.8	186,661	1.0	202,638	1.1	232,476	1.2	233,813	1.2
1.3 Fishery	61,263	0.3	136,343	0.8	84,899	0.5	70,760	0.4	49,880	0.3	156,673	0.8
1.4 Others	223,403	1.3	210,592	1.2	278,189	1.5	323,757	1.7	314,580	1.6	331,830	1.8
<b>2. Mining &amp; Quarrying</b>	<b>108,393</b>	<b>0.6</b>	<b>114,298</b>	<b>0.7</b>	<b>109,651</b>	<b>0.6</b>	<b>97,880</b>	<b>0.5</b>	<b>1,044,368</b>	<b>5.4</b>	<b>114,928</b>	<b>0.6</b>
2.1 Iron Ore	145	0.0	3,896	0.0	3,796	0.0	3,843	-	45,313	0.2	3,915	0.0
2.2 Quarrying	108,248	0.6	110,402	0.6	105,855	0.6	94,038	0.5	999,055	5.2	111,013	0.6
<b>3. Manufacturing</b>	<b>392,370</b>	<b>2.2</b>	<b>325,393</b>	<b>1.9</b>	<b>340,837</b>	<b>1.8</b>	<b>341,561</b>	<b>1.8</b>	<b>166,548</b>	<b>0.9</b>	<b>279,216</b>	<b>1.5</b>
<b>4. Construction</b>	<b>1,212,817</b>	<b>6.9</b>	<b>1,479,242</b>	<b>8.5</b>	<b>1,577,276</b>	<b>8.5</b>	<b>1,471,220</b>	<b>7.8</b>	<b>1,341,291</b>	<b>7.0</b>	<b>1,300,479</b>	<b>6.9</b>
4.1 Mortgage Loans	162,183	0.9	192,203	1.1	187,172	1.0	131,963	0.7	142,970	0.7	132,095	0.7
4.2 Home Improvement	6,960	0.0	11,319	0.1	14,746	0.1	15,080	0.1	15,298	0.1	24,288	0.1
4.3 Others	1,043,675	6.0	1,275,720	7.3	1,375,358	7.5	1,324,177	7.0	1,183,024	6.2	1,144,096	6.1
<b>5. Trans., Storage &amp; Comm.</b>	<b>1,321,736</b>	<b>7.5</b>	<b>1,426,725</b>	<b>8.2</b>	<b>1,280,063</b>	<b>6.9</b>	<b>1,331,190</b>	<b>7.1</b>	<b>1,340,466</b>	<b>7.0</b>	<b>1,337,288</b>	<b>7.1</b>
5.1 Transportation	694,479	4.0	804,642	4.6	710,825	3.9	768,705	4.1	774,576	4.0	822,656	4.4
5.2 Storage	0	0.0	0	0.0	0	0.0	0	0.0	0	0.0	0	0.0
5.3 Communication	627,257	3.6	622,083	3.6	569,238	3.1	562,485	3.0	565,890	2.9	514,632	2.7
<b>6. Trade, Hotel &amp; Rest.</b>	<b>5,476,084</b>	<b>31.3</b>	<b>6,860,175</b>	<b>39.4</b>	<b>7,367,493</b>	<b>39.9</b>	<b>8,057,194</b>	<b>42.7</b>	<b>8,148,479</b>	<b>42.4</b>	<b>8,325,702</b>	<b>44.0</b>
6.1 Diamond trade	23,418	0.1	24,255	0.1	25,477	0.1	24,723	0.1	24,723	0.1	40,600	0.2
6.2 Other trade	5,308,000	30.3	6,608,301	37.9	7,052,632	38.2	7,775,663	41.2	7,849,681	40.8	8,026,887	42.5
6.3 Hotels	121,365	0.7	211,357	1.2	262,934	1.4	231,550	1.2	248,673	1.3	231,682	1.2
6.4 Restaurants	23,301	0.1	16,263	0.1	26,450	0.1	25,259	0.1	25,404	0.1	26,534	0.1
<b>7. Others</b>	<b>8,494,833</b>	<b>48.5</b>	<b>6,629,852</b>	<b>38.1</b>	<b>7,095,397</b>	<b>38.5</b>	<b>6,756,437</b>	<b>35.8</b>	<b>6,355,254</b>	<b>33.1</b>	<b>6,695,167</b>	<b>35.4</b>
7.1 Services	2,709,597	15.5	1,833,875	10.5	2,056,939	11.1	1,926,950	10.2	1,938,530	10.1	1,842,263	9.7
7.2 Personal	2,862,531	16.3	2,891,751	16.6	2,927,356	15.9	2,797,386	14.8	2,436,300	12.7	2,839,408	15.0
7.3 GOL	54,921	0.3	60,291	0.3	98,793	0.5	64,769	0.3	106,021	0.6	84,275	0.4
7.4 Central Bank of Liberia	0	0.0	0	0.0	0	0.0	0	0.0	0	0.0	0	0.0
7.5 Public Corporations	359,738	2.1	290,138	1.7	289,991	1.6	322,813	1.7	269,137	1.4	310,156	1.6
7.6 Others	2,508,047	14.3	1,553,797	8.9	1,722,318	9.3	1,644,520	8.7	1,605,266	8.3	1,619,066	8.6
<b>TOTAL</b>	<b>17,522,814</b>	<b>100.0</b>	<b>17,418,089</b>	<b>100.0</b>	<b>18,452,460</b>	<b>100.0</b>	<b>18,860,394</b>	<b>100.0</b>	<b>19,226,836</b>	<b>100.0</b>	<b>18,901,533</b>	<b>100.0</b>

Source : Central Bank of Liberia, Monrovia, Liberia.

## MONEY AND BANKING

## CENTRAL BANK OF LIBERIA

**1.4b: Commercial Banks' Loans By Economic Sector - 2013***Thousands of Liberian Dollars*

Sector	Jan-13		Feb-13		Mar-13		Apr-13		May-13		Jun-13	
	L\$	%	L\$	%	L\$	%	L\$	%	L\$	%	L\$	%
<b>1. Agriculture</b>	<b>1,170,893</b>	<b>5.8</b>	<b>1,184,696</b>	<b>5.8</b>	<b>1,279,792</b>	<b>6.4</b>	<b>1,265,159</b>	<b>5.7</b>	<b>1,201,318</b>	<b>5.4</b>	<b>1,009,887</b>	<b>4.4</b>
1.1 Rubber	306,093	1.5	121,631	0.6	211,329	1.1	258,848	1.2	318,926	1.4	204,851	0.9
1.2 Forestry	202,113	1.0	346,092	1.7	349,287	1.7	283,827	1.3	205,263	0.9	163,043	0.7
1.3 Fishery	193,626	1.0	171,350	0.8	171,127	0.9	162,401	0.7	85,910	0.4	227,324	1.0
1.4 Others	469,062	2.3	545,623	2.7	548,050	2.7	560,084	2.5	591,220	2.6	414,669	1.8
<b>2. Mining &amp; Quarrying</b>	<b>154,194</b>	<b>0.8</b>	<b>127,772</b>	<b>0.6</b>	<b>151,978</b>	<b>0.8</b>	<b>127,904</b>	<b>0.6</b>	<b>162,606</b>	<b>0.7</b>	<b>170,225</b>	<b>0.7</b>
2.1 Iron Ore	43,285	0.2	43,760	0.2	43,359	0.2	44,017	0.2	47,736	0.2	44,776	0.2
2.2 Quarrying	110,909	0.6	84,012	0.4	108,619	0.5	83,888	0.4	114,870	0.5	125,449	0.6
<b>3. Manufacturing</b>	<b>321,188</b>	<b>1.6</b>	<b>351,431</b>	<b>1.7</b>	<b>419,155</b>	<b>2.1</b>	<b>421,970</b>	<b>1.9</b>	<b>406,215</b>	<b>1.8</b>	<b>372,394</b>	<b>1.6</b>
<b>4. Construction</b>	<b>1,649,210</b>	<b>8.2</b>	<b>1,807,881</b>	<b>8.8</b>	<b>1,859,562</b>	<b>9.3</b>	<b>2,692,567</b>	<b>12.2</b>	<b>2,373,115</b>	<b>10.6</b>	<b>2,209,557</b>	<b>9.7</b>
4.1 Mortgage Loans	32,816	0.2	157,467	0.8	152,129	0.8	187,014	0.8	94,784	0.4	82,434	0.4
4.2 Home Improvement	133,281	0.7	4,843	0.0	68,913	0.3	12,609	0.1	190,562	0.9	11,175	0.0
4.3 Others	1,483,114	7.4	1,645,572	8.0	1,638,521	8.2	2,492,945	11.3	2,087,770	9.3	2,115,948	9.3
<b>5. Trans., Storage &amp; Comm.</b>	<b>1,334,353</b>	<b>6.7</b>	<b>1,489,084</b>	<b>7.3</b>	<b>1,714,391</b>	<b>8.5</b>	<b>1,965,857</b>	<b>8.9</b>	<b>1,745,687</b>	<b>7.8</b>	<b>1,330,534</b>	<b>5.8</b>
5.1 Transportation	848,669	4.2	856,940	4.2	1,204,255	6.0	1,003,731	4.5	866,412	3.9	667,479	2.9
5.2 Storage	-	-	197,359	1.0	-	-	38	0.0	-	-	-	-
5.3 Communication	485,685	2.4	434,786	2.1	510,136	2.5	962,089	4.4	879,275	3.9	663,055	2.9
<b>6. Trade, Hotel &amp; Rest.</b>	<b>8,664,542</b>	<b>43.3</b>	<b>8,733,869</b>	<b>42.6</b>	<b>8,385,823</b>	<b>41.7</b>	<b>8,349,400</b>	<b>37.8</b>	<b>8,813,790</b>	<b>39.4</b>	<b>9,827,970</b>	<b>43.2</b>
6.1 Diamond trade	40,603	0.2	47,905	0.2	47,382	0.2	45,300	0.2	52,250	0.2	60,390	0.3
6.2 Other trade	8,356,274	41.7	8,387,723	40.9	8,093,156	40.3	8,018,998	36.3	8,474,757	37.9	9,413,701	41.4
6.3 Hotels	236,209	1.2	265,903	1.3	212,873	1.1	193,297	0.9	216,108	1.0	278,411	1.2
6.4 Restaurants	31,457	0.2	32,338	0.2	32,413	0.2	91,805	0.4	70,675	0.3	75,468	0.3
<b>7. Others</b>	<b>6,727,040</b>	<b>33.6</b>	<b>6,797,496</b>	<b>33.2</b>	<b>6,291,743</b>	<b>31.3</b>	<b>7,280,859</b>	<b>32.9</b>	<b>7,681,280</b>	<b>34.3</b>	<b>7,831,420</b>	<b>34.4</b>
7.1 Services	2,241,520	11.2	1,904,575	9.3	1,776,205	8.8	1,960,127	8.9	1,975,281	8.8	2,218,617	9.8
7.2 Personal	2,039,423	10.2	2,643,798	12.9	2,759,427	13.7	2,718,102	12.3	2,904,466	13.0	2,728,103	12.0
7.3 GOL	77,737	0.4	71,406	0.3	85,788	0.4	119,632	0.5	100,564	0.4	81,484	0.4
7.4 Central Bank of Liberia	-	-	-	-	-	-	-	-	-	-	-	-
7.5 Public Corporations	365,381	1.8	389,551	1.9	363,210	1.8	403,287	1.8	378,824	1.7	390,910	1.7
7.6 Others	2,002,980	10.0	1,788,166	8.7	1,307,114	6.5	2,079,711	9.4	2,322,146	10.4	2,412,307	10.6
<b>TOTAL</b>	<b>20,021,419</b>	<b>100.0</b>	<b>20,492,228</b>	<b>100.0</b>	<b>20,102,444</b>	<b>100.0</b>	<b>22,103,714</b>	<b>100.0</b>	<b>22,384,009</b>	<b>100.0</b>	<b>22,751,987</b>	<b>100.0</b>

Source : Central Bank of Liberia, Monrovia, Liberia.

## MONEY AND BANKING

## CENTRAL BANK OF LIBERIA

**1.4b: Commercial Banks' Loans By Economic Sector - 2013 Cont'd***Thousands of Liberian Dollars*

Sector	Jul-13		Aug-13		Sep-13		Oct-13		Nov-13		Dec-13	
	L\$	%	L\$	%	L\$	%	L\$	%	L\$	%	L\$	%
<b>1. Agriculture</b>	<b>1,358,995</b>	<b>5.5</b>	<b>1,300,242</b>	<b>5.1</b>	<b>1,336,994</b>	<b>5.2</b>	<b>1,353,390</b>	<b>5.2</b>	<b>1,434,521</b>	<b>5.3</b>	<b>1,494,838</b>	<b>5.5</b>
1.1 Rubber	268,996	1.1	155,105	0.6	230,383	0.9	231,702	0.9	229,919	0.9	232,380	0.9
1.2 Forestry	204,062	0.8	374,096	1.5	267,120	1.0	291,519	1.1	259,578	1.0	276,716	1.0
1.3 Fishery	230,098	0.9	161,544	0.6	124,458	0.5	135,861	0.5	181,664	0.7	247,335	0.9
1.4 Others	655,839	2.7	609,497	2.4	715,033	2.8	694,308	2.7	763,361	2.8	738,407	2.7
<b>2. Mining &amp; Quarrying</b>	<b>265,361</b>	<b>1.1</b>	<b>89,200</b>	<b>0.4</b>	<b>84,960</b>	<b>0.3</b>	<b>78,327</b>	<b>0.3</b>	<b>95,192</b>	<b>0.4</b>	<b>100,320</b>	<b>0.4</b>
2.1 Iron Ore	45,338	0.2	50,006	0.2	5,360	0.0	5,103	0.0	4,401	0.0	3,713	0.0
2.2 Quarrying	220,023	0.9	39,194	0.2	79,600	0.3	73,224	0.3	90,791	0.3	96,608	0.4
<b>3. Manufacturing</b>	<b>269,041</b>	<b>1.1</b>	<b>331,811</b>	<b>1.3</b>	<b>378,990</b>	<b>1.5</b>	<b>341,464</b>	<b>1.3</b>	<b>376,693</b>	<b>1.4</b>	<b>371,910</b>	<b>1.4</b>
<b>4. Construction</b>	<b>2,626,535</b>	<b>10.6</b>	<b>2,753,911</b>	<b>10.8</b>	<b>2,774,726</b>	<b>10.9</b>	<b>2,798,056</b>	<b>10.7</b>	<b>2,978,896</b>	<b>11.1</b>	<b>2,933,642</b>	<b>10.8</b>
4.1 Mortgage Loans	82,848	0.3	85,542	0.3	89,520	0.4	102,060	0.4	115,160	0.4	102,383	0.4
4.2 Home Improvement	10,618	-	19,398	0.1	28,160	0.1	33,696	0.1	59,251	0.2	35,145	0.1
4.3 Others	2,533,069	10.3	2,648,971	10.4	2,657,046	10.4	2,662,300	10.2	2,804,486	10.4	2,796,114	10.3
<b>5. Trans., Storage &amp; Comm.</b>	<b>831,262</b>	<b>5.9</b>	<b>2,356,735</b>	<b>9.2</b>	<b>2,322,487</b>	<b>9.1</b>	<b>2,206,625</b>	<b>8.4</b>	<b>2,180,725</b>	<b>8.1</b>	<b>2,274,077</b>	<b>8.4</b>
5.1 Transportation	763,165	3.1	593,048	2.3	736,670	2.9	665,499	2.5	671,779	2.5	680,956	2.5
5.2 Storage	-	-	-	-	-	-	-	-	-	-	-	-
5.3 Communication	68,097	2.8	1,763,687	6.9	1,585,817	6.2	1,541,126	5.9	1,508,946	5.6	1,593,121	5.9
<b>6. Trade, Hotel &amp; Rest.</b>	<b>9,811,638</b>	<b>39.6</b>	<b>9,715,245</b>	<b>38.0</b>	<b>9,799,259</b>	<b>38.3</b>	<b>10,012,921</b>	<b>38.2</b>	<b>10,184,350</b>	<b>37.8</b>	<b>10,860,881</b>	<b>40.0</b>
6.1 Diamond trade	57,273	0.2	62,487	0.2	60,800	0.2	62,451	0.2	63,652	0.2	62,865	0.2
6.2 Other trade	9,345,497	37.8	9,240,676	36.2	9,348,245	36.6	9,618,803	36.7	9,825,103	36.5	10,503,245	38.7
6.3 Hotels	329,430	1.3	314,615	1.2	298,614	1.2	221,345	0.8	207,006	0.8	211,942	0.8
6.4 Restaurants	79,438	0.3	97,467	0.4	91,600	0.4	110,322	0.4	88,591	0.3	82,830	0.3
<b>7. Others</b>	<b>8,930,869</b>	<b>36.2</b>	<b>8,979,479</b>	<b>35.2</b>	<b>8,865,244</b>	<b>34.7</b>	<b>9,405,443</b>	<b>35.9</b>	<b>9,689,331</b>	<b>36.0</b>	<b>9,133,698</b>	<b>33.6</b>
7.1 Services	2,560,933	10.4	2,414,775	9.5	2,495,097	9.8	2,450,112	9.4	2,574,177	9.6	2,580,061	9.5
7.2 Personal	3,044,329	12.3	3,137,480	12.3	2,996,819	11.7	3,272,460	12.5	3,268,779	12.1	3,256,564	12.0
7.3 GOL	392,663	1.6	343,200	1.3	347,768	1.4	548,101	2.1	551,899	2.0	578,387	2.1
7.4 Central Bank of Liberia	-	-	42,692	0.2	-	-	-	-	-	-	-	-
7.5 Public Corporations	412,390	1.7	409,695	1.6	272,591	1.1	260,112	1.0	247,919	0.9	265,485	1.0
7.6 Others	2,520,554	10.2	2,631,637	10.3	2,752,969	10.8	2,874,658	11.0	3,046,558	11.3	2,453,201	9.0
<b>TOTAL</b>	<b>24,711,696</b>	<b>100.0</b>	<b>25,526,623</b>	<b>100.0</b>	<b>25,562,660</b>	<b>100.0</b>	<b>26,196,228</b>	<b>100.0</b>	<b>26,939,708</b>	<b>100.0</b>	<b>27,169,365</b>	<b>100.0</b>

Source : Central Bank of Liberia, Monrovia, Liberia.

## MONEY AND BANKING

CENTRAL BANK OF LIBERIA

**1.4c: Commercial Banks' Loans By Economic Sector - 2014**

Thousands of Liberian Dollars

Sector	Jan-14		Feb-14		Mar-14		Apr-14		May-14		Jun-14	
	L\$	%	L\$	%	L\$	%	L\$	%	L\$	%	L\$	%
<b>1. Agriculture</b>	<b>1,469,867</b>	<b>5.5</b>	<b>1,533,385</b>	<b>5.9</b>	<b>1,782,107</b>	<b>6.3</b>	<b>1,901,650</b>	<b>6.5</b>	<b>1,719,375</b>	<b>6</b>	<b>1,662,566</b>	<b>5.5</b>
1.1 Rubber	232,148	0.9	237,308	0.9	254,170	0.9	318,792	1.1	263,843	0.9	279,323	0.9
1.2 Forestry	273,572	1.0	240,898	0.9	446,462	1.6	507,832	1.7	486,061	1.7	543,095	1.8
1.3 Fishery	239,568	0.9	370,874	1.4	390,273	1.4	391,315	1.3	392,079	1.4	332,423	1.1
1.4 Others	724,579	2.7	684,306	2.6	691,202	2.4	683,711	2.4	577,392	2.0	507,725	1.7
<b>2. Mining &amp; Quarrying</b>	<b>93,219</b>	<b>0.3</b>	<b>95,274</b>	<b>0.4</b>	<b>134,406</b>	<b>0.5</b>	<b>131,425</b>	<b>0.5</b>	<b>128,972</b>	<b>0</b>	<b>124,981</b>	<b>0.4</b>
2.1 Iron Ore	2,898	0.0	2,255	0.0	7,866	0.0	10,588	0.0	10,294	0.0	3,439	0.0
2.2 Quarrying	90,321	0.3	93,019	0.4	126,540	0.4	120,838	0.4	118,678	0.4	121,542	0.4
<b>3. Manufacturing</b>	<b>364,504</b>	<b>1.4</b>	<b>262,538</b>	<b>1.0</b>	<b>545,044</b>	<b>1.9</b>	<b>541,340</b>	<b>1.9</b>	<b>578,671</b>	<b>2.0</b>	<b>581,278</b>	<b>1.9</b>
<b>4. Construction</b>	<b>2,775,887</b>	<b>10.3</b>	<b>2,928,777</b>	<b>11.2</b>	<b>4,419,157</b>	<b>15.6</b>	<b>4,557,587</b>	<b>15.7</b>	<b>4,434,586</b>	<b>15</b>	<b>4,606,376</b>	<b>15.3</b>
4.1 Mortgage Loans	101,913	0.4	114,741	0.4	504,453	1.8	547,934	1.9	963,332	3.3	905,731	3.0
4.2 Home Improvement	16,181	0.1	10,521	0.0	96,615	0.3	82,338	0.3	8,218	0.0	5,883	0.0
4.3 Others	2,657,793	9.9	2,803,515	10.7	3,818,090	13.5	3,927,316	13.5	3,463,037	12.0	3,694,762	12.3
<b>5. Trans., Storage &amp; Comm.</b>	<b>2,191,463</b>	<b>8.2</b>	<b>2,135,408</b>	<b>8.2</b>	<b>2,394,505</b>	<b>8.5</b>	<b>2,443,146</b>	<b>8.4</b>	<b>2,366,040</b>	<b>8</b>	<b>2,465,197</b>	<b>8.2</b>
5.1 Transportation	677,166	2.5	680,357	2.6	690,301	2.4	695,432	2.4	667,015	2.3	674,306	2.2
5.2 Storage	-	-	-	-	1	0.0	-	-	0	0.0	0	0.0
5.3 Communication	1,514,297	5.6	1,455,051	5.6	1,704,204	6.0	1,747,714	6.0	1,699,025	5.9	1,790,891	6.0
<b>6. Trade, Hotel &amp; Rest.</b>	<b>10,896,022</b>	<b>40.5</b>	<b>10,184,662</b>	<b>39.0</b>	<b>12,788,117</b>	<b>45.2</b>	<b>12,687,110</b>	<b>43.7</b>	<b>12,515,160</b>	<b>43</b>	<b>12,820,169</b>	<b>42.7</b>
6.1 Diamond trade	62,629	0.2	-	-	67,802	0.2	68,338	0.2	66,432	0.2	70,138	0.2
6.2 Other trade	10,413,703	38.7	9,801,928	37.5	12,160,474	43.0	12,043,861	41.5	11,993,983	41.6	12,253,882	40.8
6.3 Hotels	208,699	0.8	200,948	0.8	336,419	1.2	326,774	1.1	263,107	0.9	314,070	1.0
6.4 Restaurants	210,991	0.8	181,786	0.7	223,423	0.8	248,138	0.9	191,638	0.7	182,080	0.6
<b>7. Others</b>	<b>9,091,834</b>	<b>33.8</b>	<b>8,971,799</b>	<b>34.4</b>	<b>6,212,676</b>	<b>22.0</b>	<b>6,773,852</b>	<b>23.3</b>	<b>7,081,172</b>	<b>25</b>	<b>7,788,930</b>	<b>25.9</b>
7.1 Services	2,600,625	9.7	2,453,959	9.4	1,648,415	5.8	1,590,958	5.5	1,651,626	5.7	1,778,462	5.9
7.2 Personal	3,148,305	11.7	3,118,140	11.9	2,709,835	9.6	2,844,920	9.8	2,840,773	9.9	2,954,564	9.8
7.3 GOL	569,523	2.1	583,650	2.2	586,103	2.1	593,775	2.0	585,692	2.0	614,948	2.0
7.4 Central Bank of Liberia	-	-	-	-	-	-	-	-	0	0.0	0	0.0
7.5 Public Corporations	312,561	1.2	354,618	1.4	215,621	0.8	264,240	0.9	269,475	0.9	281,351	0.9
7.6 Others	2,460,821	9.2	2,461,433	9.4	1,052,702	3.7	1,479,960	5.1	1,733,607	6.0	2,159,607	7.2
<b>TOTAL</b>	<b>26,882,795</b>	<b>100.0</b>	<b>26,111,843</b>	<b>100.0</b>	<b>28,276,011</b>	<b>100.0</b>	<b>29,036,110</b>	<b>100.0</b>	<b>28,823,975</b>	<b>100.0</b>	<b>30,049,496</b>	<b>100.0</b>

Source : Central Bank of Liberia, Monrovia, Liberia.



**MONEY AND BANKING**

**CENTRAL BANK OF LIBERIA**

**1.5: Commercial Banks' Interest Rates: 2012-2014**

2012	Jan-12	Feb-12	Mar-12	Apr-12	May-12	Jun-12
Average Lending Rate	13.42	13.38	13.26	13.89	12.88	13.42
Average Personal Loan Rate	11.02	14.02	13.90	14.70	14.01	14.02
Average Mortgage Rate	14.66	14.14	15.00	13.41	14.40	13.86
Average Time Deposit Rate	3.40	3.30	3.80	4.10	3.70	3.80
Average Savings Rate	2.00	2.02	2.02	2.00	2.02	2.02
Average Rate on CDs	2.50	3.00	2.00	2.50	2.50	3.00

	Jul-12	Aug-12	Sep-12	Oct-12	Nov-12	Dec-12
Average Lending Rate	13.74	13.89	13.62	13.68	13.84	13.20
Average Personal Loan Rate	13.94	13.96	14.06	13.92	13.36	14.04
Average Mortgage Rate	13.73	13.79	13.76	12.00	12.00	13.99
Average Time Deposit Rate	3.40	3.80	3.60	3.60	2.60	2.90
Average Savings Rate	2.02	2.02	2.10	2.03	2.00	2.00
Average Rate on CDs	3.00	3.00	3.00	3.00	3.00	3.00

2013	Jan-13	Feb-13	Mar-13	Apr-13	May-13	Jun-13
Average Lending Rate	13.67	13.51	13.02	13.65	13.18	13.63
Average Personal Loan Rate	14.79	13.02	13.21	13.87	14.17	13.91
Average Mortgage Rate	15.00	13.99	12.00	13.92	14.99	14.25
Average Time Deposit Rate	4.20	3.90	3.60	3.90	3.80	3.86
Average Savings Rate	2.00	2.00	2.00	2.05	2.00	2.01
Average Rate on CDs	3.00	3.00	3.00	2.50	3.00	2.00

	Jul-13	Aug-13	Sep-13	Oct-13	Nov-13	Dec-13
Average Lending Rate	13.54	13.18	13.53	13.49	13.74	13.73
Average Personal Loan Rate	13.99	13.99	14.03	13.98	14.14	14.01
Average Mortgage Rate	14.19	14.23	14.99	14.19	14.31	14.29
Average Time Deposit Rate	3.90	3.70	3.80	3.80	4.40	3.60
Average Savings Rate	2.01	2.01	2.01	2.01	2.01	1.99
Average Rate on CDs	3.00	3.00	3.00	3.00	3.00	2.50

2014	Jan-14	Feb-14	Mar-14	Apr-14	May-14	Jun-14
Average Lending Rate	13.71	13.46	13.65	13.39	13.32	13.68
Average Personal Loan Rate	14.03	14.03	14.01	14.03	14.01	14.01
Average Mortgage Rate	14.19	14.99	14.25	14.22	14.19	14.30
Average Time Deposit Rate	4.00	3.80	3.80	4.20	3.99	4.50
Average Savings Rate	2.00	2.00	2.00	2.00	2.00	2.00
Average Rate on CDs	3.00	2.50	2.99	2.00	2.00	2.00

Note: CDs-Certificate of Deposits

Source : Central Bank of Liberia, Monrovia, Liberia.

MONEY AND BANKING

CENTRAL BANK OF LIBERIA

**1.6: Liberian Dollar Exchange Rates - Period Averages: 2012- 2014**  
(Liberian dollar per US dollar)

Period 2012	Large bills <sup>1</sup>		
	Buy	Sell	Middle <sup>2</sup>
Jan	72.44	73.40	72.92
Feb	73.00	74.00	73.50
Mar	73.11	74.11	73.61
Apr	73.5	74.5	74.00
May	74.41	75.37	74.89
Jun	75.04	76.04	75.54
Jul	73.62	74.58	74.10
Aug	72.99	73.99	73.49
Sep	72.84	73.8	73.32
Oct	71.56	72.56	72.06
Nov	71.75	72.75	72.25
Dec	72.00	73.00	72.50
Quarter 1	<b>72.85</b>	<b>73.84</b>	<b>73.34</b>
Quarter 2	<b>74.32</b>	<b>75.30</b>	<b>74.81</b>
Quarter 3	<b>73.15</b>	<b>74.12</b>	<b>73.64</b>
Quarter 4	<b>71.77</b>	<b>72.77</b>	<b>72.27</b>

Period 2013	Large bills <sup>1</sup>		
	Buy	Sell	Middle <sup>2</sup>
Jan	73.46	74.46	73.96
Feb	74.00	75.00	74.50
Mar	74.00	75.00	74.50
Apr	74.54	75.54	75.04
May	75.13	76.13	75.63
Jun	76.04	77.04	76.54
Jul	76.56	77.56	77.06
Aug	78.11	79.11	78.61
Sep	79.14	80.14	79.64
Oct	80.07	81.07	80.57
Nov	80.48	81.48	80.98
Dec	81.38	82.38	81.88
Quarter 1	<b>73.82</b>	<b>74.82</b>	<b>74.32</b>
Quarter 2	<b>75.24</b>	<b>76.24</b>	<b>75.74</b>
Quarter 3	<b>77.94</b>	<b>78.94</b>	<b>78.44</b>
Quarter 4	<b>80.64</b>	<b>81.64</b>	<b>81.14</b>

Period 2014	Large bills <sup>1</sup>		
	Buy	Sell	Middle <sup>2</sup>
Jan	83.07	84.07	83.57
Feb	80.88	81.88	81.38
Mar	83.88	84.88	84.38
Apr	86.12	87.12	86.62
May	86.07	87.07	86.57
Jun	88.72	89.72	89.22
Quarter 1	<b>82.61</b>	<b>83.61</b>	<b>83.11</b>
Quarter 2	<b>86.97</b>	<b>87.97</b>	<b>87.47</b>

<sup>2</sup>Average of buying and selling rates.  
Source : Central Bank of Liberia, Monrovia, Liberia.

**MONEY AND BANKING****CENTRAL BANK OF LIBERIA****1.7: Liberian Dollar Exchange Rates - End of Period: 2012 - 2014***(Liberian dollars per US dollar)*

Months	2012	2013	2014
Jan	73.50	74.50	80.50
Feb	73.50	74.50	83.50
Mar	74.00	74.50	85.50
Apr	74.00	75.50	87.50
May	76.00	76.50	86.50
Jun	74.50	76.50	90.50
Jul	73.50	77.50	
Aug	73.50	79.50	
Sep	73.00	80.00	
Oct	72.50	81.00	
Nov	72.50	81.50	
Dec	72.50	82.50	

*Source : Central Bank of Liberia, Monrovia, Liberia.*

MONEY AND BANKING

CENTRAL BANK OF LIBERIA

**1.8a: Liberian Dollar Exchange Rates Jan.-Feb., 2014**  
(Liberian dollar per US dollar)

Period	Large bills <sup>1</sup>			Period	Large bills <sup>1</sup>		
	Buy	Sell	Middle <sup>2</sup>		Buy	Sell	Middle <sup>2</sup>
<b>Jan</b>				<b>Feb</b>			
1	82.00	83.00	82.50	1	80.00	81.00	80.50
2	83.00	84.00	83.50	3	80.00	81.00	80.50
3	83.00	84.00	83.50	4	80.00	81.00	80.50
4	83.00	84.00	83.50	5	80.00	81.00	80.50
6	83.00	84.00	83.50	6	80.00	81.00	80.50
7	83.00	84.00	83.50	7	80.00	81.00	80.50
8	84.00	85.00	84.50	8	80.00	81.00	80.50
9	84.00	85.00	84.50	10	80.00	81.00	80.50
10	85.00	86.00	85.50	11	80.00	81.00	80.50
11	85.00	86.00	85.50	12	80.00	81.00	80.50
13	85.00	86.00	85.50	13	80.00	81.00	80.50
14	85.00	86.00	85.50	14	80.00	81.00	80.50
15	85.00	86.00	85.50	15	80.00	81.00	80.50
16	85.00	86.00	85.50	17	80.00	81.00	80.50
17	85.00	86.00	85.50	18	80.00	81.00	80.50
18	86.00	87.00	86.50	19	81.00	82.00	81.50
20	86.00	87.00	86.50	20	81.00	82.00	81.50
21	86.00	87.00	86.50	21	82.00	83.00	82.50
22	85.00	86.00	85.50	22	82.00	83.00	82.50
23	80.00	81.00	80.50	24	83.00	84.00	83.50
24	80.00	81.00	80.50	25	83.00	84.00	83.50
25	80.00	81.00	80.50	26	83.00	84.00	83.50
27	80.00	81.00	80.50	27	83.00	84.00	83.50
28	80.00	81.00	80.50	28	83.00	84.00	83.50
29	80.00	81.00	80.50				0.00
30	80.00	81.00	80.50				0.00
31	80.00	81.00	80.50				
<b>Period Average</b>	<b>83.07</b>	<b>84.07</b>	<b>83.57</b>	<b>Period Average</b>	<b>80.88</b>	<b>81.88</b>	<b>81.38</b>

1. US dollar bank notes of denominations 5 and higher.

2. Average of buying and selling rates.

Source: Central Bank of Liberia, Monrovia, Liberia.

**MONEY AND BANKING**

**CENTRAL BANK OF LIBERIA**

**1.8b: Liberian Dollar Exchange Rates Mar.-Apr., 2014**

*(Liberian dollar per US dollar)*

Period	Large bills <sup>1</sup>			Period	Large bills <sup>1</sup>		
	Buy	Sell	Middle <sup>2</sup>		Buy	Sell	Middle <sup>2</sup>
<b>Mar</b>				<b>Apr.</b>			
1	83.00	84.00	83.50	1	85.00	86.00	85.50
3	83.00	84.00	83.50	2	85.00	86.00	85.50
4	83.00	84.00	83.50	3	85.00	86.00	85.50
5	83.00	84.00	83.50	4	85.00	86.00	85.50
6	83.00	84.00	83.50	5	86.00	87.00	86.50
7	83.00	84.00	83.50	7	86.00	87.00	86.50
8	83.00	84.00	83.50	8	86.00	87.00	86.50
10	83.00	84.00	83.50	9	86.00	87.00	86.50
11	83.00	84.00	83.50	10	86.00	87.00	86.50
12	83.00	84.00	83.50	11	86.00	87.00	86.50
13	84.00	85.00	84.50	12	86.00	87.00	86.50
14	84.00	85.00	84.50	14	86.00	87.00	86.50
15	84.00	85.00	84.50	15	86.00	87.00	86.50
17	84.00	85.00	84.50	16	86.00	87.00	86.50
18	84.00	85.00	84.50	17	86.00	87.00	86.50
19	84.00	85.00	84.50	18	86.00	87.00	86.50
20	84.00	85.00	84.50	19	86.00	87.00	86.50
21	84.00	85.00	84.50	21	86.00	87.00	86.50
22	84.00	85.00	84.50	22	86.00	87.00	86.50
24	85.00	86.00	85.50	23	87.00	88.00	87.50
25	85.00	86.00	85.50	24	87.00	88.00	87.50
26	85.00	86.00	85.50	25	87.00	88.00	87.50
27	85.00	86.00	85.50	26	87.00	88.00	87.50
28	85.00	86.00	85.50	28	87.00	88.00	87.50
29	85.00	86.00	85.50	29	87.00	88.00	87.50
31	85.00	86.00	85.50	30	87.00	88.00	87.50
<b>Period Average</b>	<b>83.88</b>	<b>84.88</b>	<b>84.38</b>	<b>Period Average</b>	<b>86.12</b>	<b>87.12</b>	<b>86.62</b>

1. US dollar bank notes of denominations 5 and higher.

2. Average of buying and selling rates.

*Source: Central Bank of Liberia, Monrovia, Liberia.*

MONEY AND BANKING

CENTRAL BANK OF LIBERIA

1.8c: Liberian Dollar Exchange Rates May-Jun., 2014

Period	Large bills <sup>1</sup>			Period	Large bills <sup>1</sup>		
	Buy	Sell	Middle <sup>2</sup>		Buy	Sell	Middle <sup>2</sup>
<b>May</b>				<b>Jun</b>			
1	87.00	88.00	87.50	2	86.00	87.00	86.50
2	87.00	88.00	87.50	3	87.00	88.00	87.50
3	87.00	88.00	87.50	4	87.50	88.50	88.00
5	88.00	89.00	88.50	5	87.50	88.50	88.00
6	88.00	89.00	88.50	6	88.00	89.00	88.50
7	88.00	89.00	88.50	7	88.00	89.00	88.50
8	88.00	89.00	88.50	9	88.00	89.00	88.50
9	88.00	89.00	88.50	10	88.00	89.00	88.50
10	88.00	89.00	88.50	11	88.50	89.50	89.00
12	88.00	89.00	88.50	12	88.50	89.50	89.00
13	88.00	89.00	88.50	13	88.50	89.50	89.00
14	88.00	89.00	88.50	14	88.50	89.50	89.00
15	88.00	89.00	88.50	16	89.00	90.00	89.50
16	84.00	85.00	84.50	17	89.00	90.00	89.50
17	84.00	85.00	84.50	18	89.00	90.00	89.50
19	84.00	85.00	84.50	19	89.00	90.00	89.50
20	84.00	85.00	84.50	20	89.00	90.00	89.50
21	84.00	85.00	84.50	21	89.00	90.00	89.50
22	84.00	85.00	84.50	23	90.00	91.00	90.50
23	84.00	85.00	84.50	24	90.00	91.00	90.50
24	84.00	85.00	84.50	25	90.00	91.00	90.50
26	84.00	85.00	84.50	26	90.00	91.00	90.50
27	84.00	85.00	84.50	27	90.00	91.00	90.50
28	85.00	86.00	85.50	28	90.00	91.00	90.50
29	86.00	87.00	86.50	30	90.00	91.00	90.50
30	86.00	87.00	86.50				
31	86.00	87.00	86.50				
<b>Period Average</b>	<b>86.07</b>	<b>87.07</b>	<b>86.57</b>	<b>Period Average</b>	<b>88.72</b>	<b>89.72</b>	<b>89.22</b>

1. US dollar bank notes of denominations 5 and higher.

2. Average of buying and selling rates.

Source: Central Bank of Liberia, Monrovia, Liberia.

**MONEY AND BANKING**

**CENTRAL BANK OF LIBERIA**

**1.9: Commercial Banks' Inflows and Outflows: 2012 - 2014**

*(Thousands of United States Dollars)*

**Commercial Banks' Inflows and Outflows - 2012**

	Jan-12	Feb-12	Mar-12	Apr-12	May-12	Jun-12	Jan-Jun Total
Inflows	137,778	123,231	105,676	89,987	134,652	113,164	<b>704,488</b>
Outflows	89,128	95,314	96,358	107,563	141,634	132,405	<b>662,402</b>

	Jul-12	Aug-12	Sep-12	Oct-12	Nov-12	Dec-12	Jul-Dec Total	Grand Total
Inflows	132,726	103,591	120,663	101,971	123,942	100,849	<b>683,742</b>	<b>1,388,230</b>
Outflows	114,893	105,374	105,697	87,901	83,927	85,089	<b>582,881</b>	<b>1,245,283</b>

**Commercial Banks' Inflows and Outflows - 2013**

	Jan-13	Feb-13	Mar-13	Apr-13	May-13	Jun-13	Jan-Jun Total
Inflows	53,961	53,326	50,218	65,090	89,852	80,600	<b>393,047</b>
Outflows	69,933	63,393	88,683	84,801	125,667	151,880	<b>584,357</b>

Commercial Banks' Inflows and Outflows	Jul-13	Aug-13	Sep-13	Oct-13	Nov-13	Dec-13	Jul-Dec Total	Grand Total
Inflows	75,643	57,598	72,761	102,556	92,998	146,032	<b>547,588</b>	<b>940,635</b>
Outflows	108,467	49,621	125,275	116,859	88,483	127,529	<b>616,234</b>	<b>1,200,591</b>

**Commercial Banks' Inflows and Outflows - 2014**

	Jan-14	Feb-14	Mar-14	Apr-14	May-14	Jun-14	Jan-Jun Total
Inflows	110,781	103,834	95,772	110,441	112,206	92,062	<b>625,097</b>
Outflows	182,196	144,044	102,746	144,346	133,686	129,759	<b>836,777</b>

*Source : Central Bank of Liberia, Monrovia, Liberia.*

## MONEY AND BANKING

## CENTRAL BANK OF LIBERIA

## 1.10a Central Bank of Liberia Fx Auction - 2012

Auction No.	Date	FX Offered for sale by CBL (US\$)	Auction Rate L\$/US	Total Purchased US\$	No. of Accepte Bids	No. of Rejected Bids	Value of Rejected Bids (US\$)	Over/(Under) Subscription (US\$)	Total Value of Bids Submitted by Banks/FX Bureaux
292	4-Jan-12	500,000.00	72.2000	500,000.00	16	8	0.00	467,300.00	967,300.00
293	11-Jan-12	750,000.00	72.5000	750,000.00	20	10	0.00	506,340.00	1,256,340.00
294	18-Jan-12	1,000,000.00	72.4990	1,000,000.00	23	0	0.00	213,000.00	1,213,000.00
295	25-Jan-12	1,000,000.00	72.5000	1,000,000.00	29	0	0.00	419,000.00	1,419,000.00
Special	25-Jan-12	375,000.00	71.5000	375,000.00	-	-	-	-	-
Special	26-Jan-12	125,000.00	72.5000	125,000.00	-	-	-	-	-
296	1-Feb-12	1,500,000.00	72.3000	1,500,000.00	32	0	86,098.13	343,498.13	1,843,498.13
297	8-Feb-12	1,500,000.00	72.4000	1,500,000.00	35	0	0.00	634,834.00	2,134,834.00
298	15-Feb-12	1,500,000.00	72.6000	1,500,000.00	34	7	0.00	1,123,548.21	2,623,548.21
Special	21-Feb-12	500,000.00	73.0000	500,000.00	-	-	-	-	-
299	22-Feb-12	1,000,000.00	72.7665	1,000,000.00	29	13	0.00	1,158,667.00	2,158,667.00
300	29-Feb-12	1,000,000.00	73.0000	1,000,000.00	28	15	0.00	1,387,100.00	2,387,100.00
301	7-Mar-12	500,000.00	73.4900	500,000.00	15	23	150,000.00	1,152,200.00	1,652,200.00
302	16-Mar-12	500,000.00	73.5900	500,000.00	16	9	50,000.00	377,000.00	877,000.00
303	21-Mar-12	500,000.00	73.8000	500,000.00	17	19	250,000.00	1,073,200.00	1,573,200.00
304	28-Mar-12	500,000.00	73.9999	500,000.00	13	31	224,492.56	1,422,592.56	1,922,592.56
305	4-Apr-12	750,000.00	74.2400	750,000.00	17	20	0.00	744,000.00	1,494,000.00
306	11-Apr-12	1,000,000.00	74.4000	1,000,000.00	24	21	375,000.00	1,355,500.00	2,355,500.00
307	18-Apr-12	1,000,000.00	74.2000	1,000,000.00	22	11	100,000.00	1,112,240.00	2,112,240.00
308	25-Apr-12	1,000,000.00	74.4500	1,000,000.00	25	11	65,000.00	1,362,000.00	2,362,000.00
309	2-May-12	1,000,000.00	74.5000	1,000,000.00	31	7	-	1,194,000.00	2,194,000.00
Special Window	8-May-12	1,000,000.00	74.0000	1,000,000.00	-	-	-	-	-
310	9-May-12	1,000,000.00	74.7100	1,000,000.00	22	19	200,000.00	1,630,000.00	2,630,000.00
Special Window	15-May-12	1,000,000.00	74.5000	1,000,000.00	-	-	-	-	-
311	16-May-12	1,000,000.00	74.8500	1,000,000.00	23	10	-	1,079,000.00	2,079,000.00
312	23-May-12	2,200,000.00	74.8500	2,200,000.00	36	0	185,513.51	1,291,663.51	3,491,663.51
313	30-May-12	2,200,000.00	74.9000	2,200,000.00	35	0	-	1,934,000.00	4,134,000.00
314	6-Jun-12	3,000,000.00	74.7500	3,000,000.00	41	0	-	1,654,764.90	4,654,764.90
315	13-Jun-12	3,000,000.00	74.4525	3,000,000.00	43	0	-	1,683,000.00	4,683,000.00
316	20-Jun-12	3,000,000.00	74.1000	3,000,000.00	36	0	-	766,167.50	3,766,167.50
317	27-Jun-12	2,000,000.00	73.9525	2,000,000.00	34	0	-	1,282,500.00	3,282,500.00
<b>Total</b>		<b>36,900,000.00</b>		<b>36,900,000.00</b>	<b>696</b>	<b>234</b>	<b>1,686,104.20</b>	<b>27,367,115.81</b>	<b>61,267,115.81</b>

Source : Central Bank of Liberia, Monrovia, Liberia.



MONEY AND BANKING

CENTRAL BANK OF LIBERIA

1.10a Central Bank of Liberia Fx Auction - 2012 (continued)

Auction No.	Date	FX Offered for sale by CBL (US\$)	Auction Rate L\$/US	Total Purchased US\$	No. of Accepted Bids	No. of Rejected Bids	Value of Rejected Bids (US\$)	Over/(Under) Subscription (US\$)	Total Value of Bids Participating (US\$)
318	4-Jul-12	1,000,000.00	73.7500	1,000,000.00	30	-	-	1,040,000.00	2,040,000.00
Special Window	2012	500,000.00	73.7500	500,000.00					
319	11-Jul-12	750,000.00	73.5000	750,000.00	30	-	-	1,577,500.00	2,327,500.00
Special Window	2012	250,000.00	73.5000	250,000.00					
320	18-Jul-12	750,000.00	73.0000	750,000.00	29.00	-	-	1,315,000.00	2,065,000.00
321	25-Jul-12	1,000,000.00	73.0000	1,000,000.00	27.00	-	70,000.00	1,095,000.00	2,095,000.00
Special Window	2012	499,978.51	73.0000	499,978.51					
322	1-Aug-12	2,000,000.00	73.0000	2,000,000.00	43	-	-	1,154,150.00	3,154,150.00
Special Window	2012	500,000.00	72.9500	500,000.00					
323	8-Aug-12	1,000,000.00	72.9500	1,000,000.00	41.00	-	-	1,855,200.00	2,855,200.00
Special Window	2012	499,800.00	72.7500	499,800.00					
324	15-Aug-12	1,000,000.00	72.7500	1,000,000.00	47	1	-	3,158,550.00	4,158,550.00
325	23-Aug-12	1,000,000.00	73.0000	100,000.00	33	11	100,000.00	1,663,800.00	2,663,800.00
326	29-Aug-12	900,000.00	73.0000	900,000.00	38	1	90,000.00	1,402,875.00	2,402,875.00
327	5-Sep-12	900,000.00	72.9000	900,000.00	39	2	140,000.00	1,604,100.00	2,604,100.00
328	12-Sep-12	900,000.00	72.5000	900,000.00	45	1	40,000.00	2,213,900.00	3,113,900.00
329	19-Sep-12	1,500,000.00	72.4200	1,500,000.00	41	0	50,000.00	1,378,300.00	2,878,300.00
330	26-Sep-12	1,500,000.00	72.3500	1,500,000.00	39	0	35,426.62	1,245,426.62	2,745,426.62
331	3-Oct-12	900,000.00	72.2500	900,000.00	31	0	-	1,015,000.00	1,915,000.00
332	10-Oct-12	800,000.00	71.0000	800,000.00	34	0	-	717,000.00	1,517,000.00
333	17-Oct-12	700,000.00	71.0000	700,000.00	42	0	-	2,142,190.00	2,842,190.00
334	24-Oct-12	700,000.00	71.0000	700,000.00	45	2	-	2,019,015.00	2,719,015.00
335	31-Oct-12	1,000,000.00	71.7500	1,000,000.00	15	32	50,000.00	2,080,280.00	3,080,280.00
336	7-Nov-12	1,000,000.00	71.8500	1,000,000.00	36	8	-	2,091,700.00	3,091,700.00
337	14-Nov-12	700,000.00	71.2500	700,000.00	41	0	-	1,688,360.00	2,388,360.00
338	21-Nov-12	500,000.00	71.2500	500,000.00	41	0	-	2,013,650.00	2,513,650.00
339	28-Nov-12	500,000.00	71.7500	500,000.00	37	5	-	1,990,000.00	2,490,000.00
340	5-Dec-12	750,000.00	71.8000	750,000.00	38	1	-	1,635,000.00	2,385,000.00
341	12-Dec-12	750,000.00	71.9000	750,000.00	39	0	20,000.00	1,789,000.00	2,539,000.00
342	19-Dec-12	1,000,000.00	71.8000	1,000,000.00	48	0	-	2,468,500.00	3,468,500.00
343	26-Dec-12	700,000.00	71.8500	700,000.00	50	2	40,000.00	3,090,000.00	3,830,000.00
<b>Total</b>		<b>26,449,778.51</b>		<b>25,549,778.51</b>	<b>979</b>	<b>66</b>	<b>635,426.62</b>	<b>45,443,496.62</b>	<b>69,883,496.62</b>

Source : Central Bank of Liberia, Monrovia, Liberia.

**MONEY AND BANKING**

**1.10b Central Bank of Liberia Fx Auction - 2013**

**CENTRAL BANK OF LIBERIA**

Auction		FX Offered for sale by CBL (US\$)	Auction Rate L\$/US	Total Purchased US\$	No. of Accepted Bids	No. of Rejected Bids	Value of Rejected Bids (US\$)	Over/(Under) Subscription (US\$)	Total Value of Bids Submitted by Banks/FX Bureaux
344	2-Jan-13	500,000.00	72.0000	500,000.00	51	-	25,000.00	3,160,600.00	3,660,600.00
SPECIAL WINDOW	3-Jan-13	500,000.00	72.0000	500,000.00	-	-	-	-	0.00
345	9-Jan-13	500,000.00	72.5000	500,000.00	40	23.00	185,768.00	4,448,668.00	4,948,668.00
SPECIAL WINDOW	9-Jan-13	500,000.00	72.0000	500,000.00	-	-	-	-	-
346	16-Jan-13	1,000,000.00	72.8500	1,000,000.00	48.00	19.00	39,137.00	4,431,317.00	5,431,317.00
SPECIAL WINDOW	16-Jan-13	912,500.00	72.5000	912,500.00	-	-	-	-	-
347	17-Jan-13	87,500.00	72.8500	87,500.00	-	-	-	-	-
SPECIAL WINDOW	23-Jan-13	1,500,000.00	73.0000	1,500,000.00	65	3.00	-	4,085,420.00	5,585,420.00
SPECIAL WINDOW	23-Jan-13	729,900.00	72.8500	729,900.00	-	-	-	-	-
SPECIAL WINDOW	24-Jan-13	270,100.00	73.0000	270,100.00	-	-	-	-	-
348	30-Jan-13	1,500,000.00	73.0000	1,500,000.00	75	-	-	3,868,420.00	5,368,420.00
SPECIAL WINDOW	30-Jan-13	1,000,000.00	73.0000	1,000,000.00	-	-	-	-	0.00
349	6-Feb-13	1,500,000.00	73.0000	1,500,000.00	79	-	92,322.63	4,451,947.80	5,951,947.80
SPECIAL WINDOW	6-Feb-13	1,000,000.00	73.0000	1,000,000.00	-	-	-	-	-
350	13-Feb-13	1,000,000.00	73.3500	1,000,000.00	43	15	575,000.00	3,903,500.00	4,903,500.00
SPECIAL WINDOW	13-Feb-13	1,000,000.00	73.3500	1,000,000.00	-	-	-	-	-
351	20-Feb-13	1,250,000.00	73.2000	1,250,000.00	74	-	118,957.35	4,863,167.35	6,113,167.35
SPECIAL WINDOW	20-Feb-13	1,000,000.00	73.2000	1,000,000.00	-	-	-	-	-
352	27-Feb-13	1,250,000.00	73.1000	1,250,000.00	68	-	380,000.00	4,779,750.00	6,029,750.00
SPECIAL WINDOW	27-Feb-13	750,000.00	73.1000	750,000.00	-	-	-	-	-
SPECIAL WINDOW	6-Mar-13	1,000,000.00	73.1000	1,000,000.00	-	-	-	-	-
353	6-Mar-13	1,500,000.00	73.1000	1,500,000.00	65	-	380,000.00	3,690,200.00	5,190,200.00
SPECIAL WINDOW	14-Mar-13	750,000.00	73.2500	750,000.00	-	-	-	-	-
354	14-Mar-13	1,250,000.00	73.2500	1,250,000.00	58	-	137,000.00	4,723,700.00	5,973,700.00
SPECIAL WINDOW	20-Mar-13	750,000.00	73.2500	750,000.00	-	-	-	-	-
355	20-Mar-13	1,250,000.00	73.2500	1,250,000.00	70	-	50,000.00	5,335,070.00	6,585,070.00
SPECIAL WINDOW	27-Mar-13	750,000.00	73.6000	750,000.00	-	-	-	-	-
356	27-Mar-13	1,250,000.00	73.6000	1,250,000.00	52	21	55,000.00	5,633,400.00	6,883,400.00
357	3-Apr-13	1,250,000.00	73.7500	1,250,000.00	55	12	485,000.00	5,481,465.00	6,731,465.00
SPECIAL WINDOW	3-Apr-13	750,000.00	73.7500	750,000.00	-	-	-	-	-
358	10-Apr-13	1,250,000.00	73.9000	1,250,000.00	72	7	150,000.00	5,625,500.00	6,875,500.00
SPECIAL WINDOW	10-Apr-13	750,000.00	73.9000	750,000.00	-	-	-	-	-
359	17-Apr-13	1,250,000.00	73.9500	1,250,000.00	74	-	811,711.45	6,045,873.45	7,295,873.45
SPECIAL WINDOW	17-Apr-13	750,000.00	73.9500	750,000.00	-	-	-	-	-
360	24-Apr-13	1,250,000.00	74.0000	1,250,000.00	72	-	164,000.00	5,632,397.50	6,882,397.50
SPECIAL WINDOW	24-Apr-13	750,000.00	74.0000	750,000.00	-	-	-	-	-
361	1-May-13	1,250,000.00	74.0000	1,250,000.00	81	-	358,760.10	5,988,300.00	7,238,300.10
SPECIAL WINDOW	1-May-13	750,000.00	74.0000	750,000.00	-	-	-	-	-
362	8-May-13	1,250,000.00	74.5000	1,250,000.00	65	19	-	6,164,674.00	7,414,674.00
SPECIAL WINDOW	8-May-13	750,000.00	74.5000	750,000.00	-	-	-	-	-
363	15-May-13	1,250,000.00	74.5000	1,250,000.00	78	1	-	6,093,300.00	7,343,300.00
SPECIAL WINDOW	15-May-13	750,000.00	74.5000	750,000.00	-	-	-	-	-
364	22-May-13	1,250,000.00	74.7500	1,250,000.00	76	8	50,400.00	5,959,140.00	7,209,140.00
SPECIAL WINDOW	22-May-13	750,000.00	74.7500	750,000.00	-	-	-	-	-
365	29-May-13	1,250,000.00	74.9000	1,250,000.00	81	2	280,870.00	6,527,780.00	7,777,780.00
SPECIAL WINDOW	29-May-13	750,000.00	74.9000	750,000.00	-	-	-	-	-
366	5-Jun-13	1,250,000.00	75.0000	1,250,000.00	80	-	450,000.00	5,970,425.00	7,220,425.00
SPECIAL WINDOW	5-Jun-13	750,000.00	15-Mar-00	750,000.00	-	-	-	-	-
367	12-Jun-13	1,250,000.00	15-Mar-00	1,250,000.00	89.0000	0.00	410100	6447385	7,697,385.00
SPECIAL WINDOW	12-Jun-13	750,000.00	12-Mar-00	750,000.00	-	-	-	-	-
368	19-Jun-13	1,250,000.00	15-Mar-00	1,250,000.00	85.0000	9.00	180000	6255800	7,505,800.00
SPECIAL WINDOW	19-Jun-13	750,000.00	15-Mar-00	750,000.00	-	-	-	-	-
369	26-Jun-13	1,250,000.00	15-Mar-00	1,250,000.00	105.0000	3.00	189500	6901300	8,151,300.00
SPECIAL WINDOW	26-Jun-13	750,000.00	15-Mar-00	750,000.00	-	-	-	-	-
<b>Total</b>		<b>52,250,000.00</b>		<b>52,250,000.00</b>	<b>1,801</b>	<b>142</b>	<b>5,568,526.53</b>	<b>136,468,500.10</b>	<b>167,968,500.20</b>

Source : Central Bank of Liberia, Monrovia, Liberia.

**MONEY AND BANKING**

**CENTRAL BANK OF LIBERIA**

**1.10b Central Bank of Liberia Fx Auction - 2013 (continue)**

Auction No.	Date	FX Offered for sale by CBL (US\$)	Auction Rate L\$/US	Total Purchased US\$	No. of Accepted Bids	No. of Rejected Bids	Value of Rejected Bids (US\$)	Over/(Under) Subscription (US\$)	Total Value of Bids Submitted by Participating Banks/FX Bureaux (US\$)
370	3-Jul-13	1,250,000.00	75.5000	1,250,000.00	103	-	403,170.00	6,916,622.00	8,166,622.00
SPECIAL WINDOW	3-Jul-13	750,000.00	75.5000	750,000.00					
371	10-Jul-13	1,250,000.00	75.5000	1,250,000.00	103	-	135,000.00	7,249,200.00	8,499,200.00
SPECIAL WINDOW	10-Jul-13	750,000.00	75.5000	750,000.00					
372	17-Jul-13	1,250,000.00	76.0000	1,250,000.00	105	7	520,000.00	7,021,379.06	8,271,379.06
SPECIAL WINDOW	17-Jul-13	500,000.00	76.0000	500,000.00					
373	24-Jul-13	500,000.00	76.0000	500,000.00	109	-	816,000.00	6,715,275.00	7,215,275.00
SPECIAL WINDOW	24-Jul-13	500,000.00	76.0000	500,000.00					
374	31-Jul-13	500,000.00	76.5000	500,000.00	126	4	120,000.00	7,948,336.00	8,448,336.00
SPECIAL WINDOW	31-Jul-13	500,000.00	76.5000	500,000.00					
375	7-Aug-13	500,000.00	77.0000	500,000.00	113	18	174,150.00	7,514,471.00	8,014,471.00
SPECIAL WINDOW	7-Aug-13	500,000.00	77.0000	500,000.00					
376	14-Aug-13	400,000.00	77.5000	400,000.00	137	14	-	8,247,910.00	8,647,910.00
SPECIAL WINDOW	14-Aug-13	350,000.00	77.5000	350,000.00					
377	21-Aug-13	400,000.00	77.5000	400,000.00	130	1	54,970.00	7,221,960.00	7,621,960.00
SPECIAL WINDOW	21-Aug-13	350,000.00	77.5000	350,000.00					
378	28-Aug-13	400,000.00	78.0000	400,000.00	101	5	105,000.00	4,287,360.00	4,687,360.00
SPECIAL WINDOW	28-Aug-13	350,000.00	78.0000	350,000.00					
SPECIAL WINDOW	4-Sep-13	350,000.00	78.5000	350,000.00					
379	4-Sep-13	400,000.00	78.5000	400,000.00	96	23	313,474.00	7,427,074.00	7,827,074.00
SPECIAL WINDOW	11-Sep-13	350,000.00	78.5000	350,000.00					
380	11-Sep-13	400,000.00	78.5000	400,000.00	121	1	0.00	6,764,730.00	7,164,730.00
381	18-Sep-13	750,000.00	78.5000	750,000.00	117	0	40,475.00	5,050,445.00	5,800,445.00
382	25-Sep-13	750,000.00	78.7500	750,000.00	98	1	25,000.00	6,174,550.00	6,924,550.00
383	2-Oct-13	750,000.00	79.0000	750,000.00	112	1	10,000.00	6,579,127.00	7,329,127.00
384	9-Oct-13	750,000.00	79.5000	750,000.00	117	10	120,125.00	7,042,400.00	7,792,400.00
385	16-Oct-13	500,000.00	79.5000	500,000.00	96	2	1,003,000.00	6,137,000.00	6,637,000.00
386	23-Oct-13	500,000.00	79.5000	500,000.00	124	0	330,824.00	6,318,009.00	6,818,009.00
387	30-Oct-13	500,000.00	79.5000	500,000.00	124	0	270,000.00	6,116,787.50	6,613,787.50
388	6-Nov-13	500,000.00	79.5000	500,000.00	118	0	66,520.00	6,177,370.00	6,677,370.00
389	13-Nov-13	500,000.00	79.5500	500,000.00	94	0	302,000.00	6,021,750.00	6,521,750.00
390	20-Nov-13	500,000.00	79.5000	500,000.00	85	17	7,435.00	5,088,585.00	5,588,585.00
391	27-Nov-13	300,000.00	79.5000	300,000.00	85	3	560,000.00	6,366,055.00	6,666,055.00
392	4-Dec-13	300,000.00	79.7500	300,000.00	58	32	160,000.00	7,118,875.00	7,418,875.00
393	11-Dec-13	300,000.00	79.7500	300,000.00	57	21	3,500.00	6,569,990.00	6,869,990.00
394	18-Dec-13	300,000.00	79.5000	300,000.00	51	15	120,000.00	6,569,990.00	6,744,510.00
<b>Total</b>		<b>19,700,000.00</b>		<b>19,700,000.00</b>	<b>2,580</b>	<b>175</b>	<b>5,660,643.00</b>	<b>164,645,250.56</b>	<b>178,966,770.56</b>

Source : Central Bank of Liberia, Monrovia, Liberia.

**MONEY AND BANKING**

**CENTRAL BANK OF LIBERIA**

**1.10c Central Bank of Liberia Fx Auction - 2014**

Auction No.	Date	FX Offered for sale by CBL (US\$)	Auction Rate L\$/US	Total Purchased US\$	No. of Accepted Bids	No. of Rejected Bids	Value of Rejected Bids (US\$)	Over/(Under) Subscription (US\$)	Total Value of Bids Submitted by Participating Banks/FX Bureaux (US\$)
395	22-Jan-14	4,200,000.00	80.00	4,200,000.00	74	15	265,000.00	3,605,700.00	7,805,700.00
396	29-Jan-14	3,000,000.00	79.00	3,000,000.00	104	25	110,000.00	6,066,040.00	9,066,040.00
397	5-Feb-14	2,000,000.00	79.00	2,000,000.00	100	6	20,000.00	4,395,250.00	6,395,250.00
398	12-Feb-14	750,000.00	79.00	750,000.00	115	16	40,000.00	8,385,825.00	9,135,825.00
399	19-Feb-14	750,000.00	80.00	750,000.00	84	33	390,000.00	8,463,525.00	9,213,525.00
400	26-Feb-14	750,000.00	83.00	750,000.00	97	34	350,000.00	9,104,026.00	9,854,026.00
401	5-Mar-14	750,000.00	83.00	750,000.00	93	21	40,000.00	8,631,860.00	9,381,860.00
402	12-Mar-14	750,000.00	83.00	750,000.00	80	13	200,000.00	7,101,100.00	7,851,100.00
403	19-Mar-14	750,000.00	84.00	750,000.00	90	31	236,904.00	8,178,704.00	8,928,704.00
404	26-Mar-14	750,000.00	84.00	750,000.00	72	24	440,000.00	8,290,199.52	9,040,199.52
405	2-Apr-14	750,000.00	84.00	750,000.00	89	13	709,411.00	8,902,640.41	9,652,640.41
406	9-Apr-14	750,000.00	86.00	750,000.00	84	12	129,500.00	8,180,550.00	8,930,550.00
407	16-Apr-14	750,000.00	86.00	750,000.00	35	71	20,000.00	8,097,895.29	8,847,895.29
408	23-Apr-14	750,000.00	86.00	750,000.00	82	16	100,000.00	8,278,650.00	9,028,650.00
409	30-Apr-14	750,000.00	87.00	750,000.00	66	22	430,000.00	8,061,880.00	8,811,880.00
410	7-May-14	750,000.00	87.50	750,000.00	79	20	200,000.00	7,684,980.00	8,434,980.00
411	15-May-14	2,500,000.00	84.00	2,500,000.00	108	5	61,760.00	7,916,210.00	10,416,210.00
412	21-May-14	2,500,000.00	84.00	2,500,000.00	90	10	508,647.00	9,172,797.00	11,672,797.00
413	28-May-14	1,000,000.00	85.00	1,000,000.00	73	44	613,000.00	10,742,740.00	11,742,740.00
414	4-Jun-14	1,000,000.00	85.00	1,000,000.00	87	32	500,000.00	8,761,989.89	9,761,989.89
415	11-Jun-14	750,000.00	87.00	750,000.00	65	17	1,200,000.00	5,631,340.00	6,381,340.00
416	18-Jun-14	750,000.00	88.00	750,000.00	60	1	1,150,000.00	5,389,800.00	6,139,800.00
417	25-Jun-14	750,000.00	89.00	750,000.00	63	1	1,250,000.00	6,988,800.00	7,738,800.00
<b>Total</b>		<b>28,200,000.00</b>		<b>28,200,000.00</b>	<b>1,890.00</b>	<b>482.00</b>	<b>8,964,222.00</b>	<b>176,032,502.11</b>	<b>204,232,502.11</b>

Source : Central Bank of Liberia, Monrovia, Liberia.

REAL SECTOR

CENTRAL BANK OF LIBERIA

2.1a: Harmonized Consumer Price Index (HCPI) - 2012

Function	Weight (%)	Jan-12	Feb-12	Mar-12	Apr-12	May-12	Jun-12
Food & Non-alcoholic Beverages	45.20	203.80	209.91	204.29	202.02	202.79	210.47
Alcoholic Beverages, Tobacco & Narcotics	3.03	164.84	165.82	159.25	157.96	157.03	156.62
Clothing & Footwear	7.75	170.57	171.58	171.82	172.52	174.09	175.32
Housing, Water, Electricity, Gas & other fuels	12.00	130.42	131.30	131.92	130.94	132.63	132.07
Furnishings, Household Equipment & Routine Maintenance of the House	5.25	186.30	187.36	187.55	187.24	188.86	190.03
Health	3.91	104.05	104.05	104.05	104.05	104.05	104.05
Transport	6.11	204.55	205.23	207.02	208.96	209.74	209.25
Communication	1.53	86.52	86.60	86.60	86.66	86.78	86.86
Recreation & Culture	3.85	137.07	137.38	137.43	137.64	138.12	138.47
Education	3.20	100.00	100.00	100.00	100.00	100.00	100.00
Restaurants & Hotels	4.64	267.28	268.64	268.90	269.81	271.89	273.41
Miscellaneous Goods & Services	3.53	135.36	136.79	136.94	137.44	138.25	139.78
<b>General Index</b>	<b>100.00</b>	<b>179.31</b>	<b>182.51</b>	<b>180.00</b>	<b>179.05</b>	<b>179.97</b>	<b>183.63</b>

Function	Weight (%)	Jul-12	Aug-12	Sep-12	Oct-12	Nov-12	Dec-12
Food & Non-alcoholic Beverages	45.20	217.83	225.86	219.61	220.26	225.16	226.78
Alcoholic Beverages, Tobacco & Narcotics	3.03	157.44	157.03	164.25	167.30	165.38	160.37
Clothing & Footwear	7.75	172.71	171.60	175.38	174.27	172.76	173.87
Housing, Water, Electricity, Gas & other fuels	12.00	135.24	130.96	132.12	132.27	131.75	130.65
Furnishings, Household Equipment & Routine Maintenance of the House	5.25	188.11	187.27	188.62	198.17	192.66	190.40
Health	3.91	104.05	104.05	104.05	104.05	101.35	99.32
Transport	6.11	205.37	205.49	206.11	218.23	217.48	226.23
Communication	1.53	86.68	86.60	86.58	86.41	86.44	86.47
Recreation & Culture	3.85	137.70	137.37	137.28	145.98	146.08	146.21
Education	3.20	100.00	100.00	100.00	100.00	100.00	100.00
Restaurants & Hotels	4.64	270.04	269.00	269.43	266.49	266.94	270.57
Miscellaneous Goods & Services	3.53	137.44	137.05	136.55	142.70	142.70	141.63
<b>General Index</b>	<b>100.00</b>	<b>186.55</b>	<b>189.45</b>	<b>187.38</b>	<b>189.35</b>	<b>190.92</b>	<b>191.93</b>

The Harmonized Consumer Price Index (HCPI) is an amalgamation of the Classification of Individual Consumption by Purpose (COICOP), consisting of twelve functions (major groups) together with the Monrovia Consumer Price Index (MCPI) and its weights obtained from the 1964 limited expenditure survey. The Survey sample comprised wage-earner and clerical-employee households of two or more persons with monthly income not exceeding US\$250.

Sources : Liberia Institute for Statistics & Geo-Information Services (LISGIS) and Central Bank of Liberia (CBL)

## REAL SECTOR

CENTRAL BANK OF LIBERIA

**2.1b: Harmonized Consumer Price Index (HCPI) - 2013**

Function	Weight (%)	Jan-13	Feb-13	Mar-13	Apr-13	May-13	Jun-13
Food & Non-alcoholic Beverages	45.20	231.06	226.30	232.23	232.34	222.84	233.85
Alcoholic Beverages, Tobacco & Narcotics	3.03	164.33	170.39	169.31	165.44	163.28	168.84
Clothing & Footwear	7.75	169.13	175.72	174.38	172.43	174.64	179.75
Housing, Water, Electricity, Gas & other fuels	12.00	131.38	131.03	131.68	132.28	132.39	132.01
Furnishings, Household Equipment & Routine Maintenance of the House	5.25	181.56	185.26	185.27	177.08	191.44	203.28
Health	3.91	104.05	104.05	100.68	100.68	104.05	104.05
Transport	6.11	226.92	227.58	228.80	229.07	227.93	209.78
Communication	1.53	86.66	86.73	86.73	86.73	86.87	86.99
Recreation & Culture	3.85	146.26	146.42	146.42	146.71	151.25	149.75
Education	3.20	100.00	100.00	100.00	100.00	100.00	100.00
Restaurants & Hotels	4.64	273.97	275.22	275.22	276.48	281.39	279.50
Miscellaneous Goods & Services	3.53	142.64	144.24	144.20	144.74	144.15	145.36
<b>General Index</b>	<b>100.00</b>	<b>193.66</b>	<b>192.52</b>	<b>195.08</b>	<b>194.61</b>	<b>191.64</b>	<b>196.54</b>

Function	Weight (%)	Jul-13	Aug-13	Sep-13	Oct-13	Nov-13	Dec-13
Food & Non-alcoholic Beverages	45.20	236.99	244.21	239.57	245.85	243.40	244.27
Alcoholic Beverages, Tobacco & Narcotics	3.03	173.54	173.32	176.30	178.06	176.08	173.26
Clothing & Footwear	7.75	183.39	186.49	190.41	190.83	190.33	192.23
Housing, Water, Electricity, Gas & other fuels	12.00	134.21	134.10	135.54	133.98	134.25	131.78
Furnishings, Household Equipment & Routine Maintenance of the House	5.25	211.74	213.23	214.45	212.57	209.80	216.47
Health	3.91	104.05	104.05	104.05	104.05	104.05	104.05
Transport	6.11	210.11	210.46	211.81	211.81	212.89	258.72
Communication	1.53	86.99	87.26	87.39	87.51	87.56	87.68
Recreation & Culture	3.85	150.03	150.43	157.25	157.75	159.33	159.81
Education	3.20	100.00	100.00	100.00	100.00	100.00	100.00
Restaurants & Hotels	4.64	293.23	296.86	299.28	301.46	302.42	304.53
Miscellaneous Goods & Services	3.53	146.04	148.04	150.35	150.89	151.63	164.04
<b>General Index</b>	<b>100.00</b>	<b>199.78</b>	<b>203.63</b>	<b>202.70</b>	<b>205.52</b>	<b>204.36</b>	<b>208.23</b>

*The Harmonized Consumer Price Index (HCPI) is an amalgamation of the Classification of Individual Consumption by Purpose (COICOP), consisting of twelve functions (major groups) together with the Monrovia Consumer Price Index (MCPI) and its weights obtained from the 1964 limited expenditure survey. The Survey sample comprised wage-earner and clerical-employee households of two or more persons with monthly income not exceeding US\$250.*

**Sources :** Liberia Institute for Statistics & Geo-Information Services (LISGIS) and Central Bank of Liberia (CBL)

## REAL SECTOR

CENTRAL BANK OF LIBERIA

**2.1c: Harmonized Consumer Price Index (HCPI) - 2014**

Function	Weight (%)	Jan-14	Feb-14	Mar-14	Apr-14	May-14	Jun-14
Food & Non-alcoholic Beverages	45.20	243.88	240.79	244.95	244.94	239.07	255.28
Alcoholic Beverages, Tobacco & Narcotics	3.03	183.74	185.15	186.92	190.96	186.22	192.25
Clothing & Footwear	7.75	194.31	202.37	208.69	211.68	206.10	219.83
Housing, Water, Electricity, Gas & other fuels	12.00	131.47	130.72	134.10	135.74	133.44	134.10
Furnishings, Household Equipment & Routine Maintenance of the House	5.25	223.32	207.61	222.40	225.64	224.41	228.82
Health	3.91	109.46	112.50	122.97	122.97	120.61	121.96
Transport	6.11	246.20	256.23	257.74	258.80	259.20	260.88
Communication	1.53	87.89	87.61	88.00	88.29	88.28	88.62
Recreation & Culture	3.85	160.71	160.53	163.87	165.41	165.38	162.59
Education	3.20	100.00	100.00	100.00	100.00	100.00	100.00
Restaurants & Hotels	4.64	308.50	309.19	316.44	321.86	321.74	328.14
Miscellaneous Goods & Services	3.53	164.42	164.58	171.19	173.55	173.65	179.97
<b>General Index</b>	<b>100.00</b>	<b>208.54</b>	<b>207.65</b>	<b>212.46</b>	<b>213.64</b>	<b>210.00</b>	<b>219.46</b>

The Harmonized Consumer Price Index (HCPI) is an amalgamation of the Classification of Individual Consumption by Purpose (COICOP), consisting of twelve functions (major groups) together with the Monrovia Consumer Price Index (MCPI) and its weights obtained from the 1964 limited expenditure survey.

The Survey sample comprised wage-earner and clerical-employee households of two or more persons with monthly income not exceeding US\$250.

Sources : Liberia Institute for Statistics & Geo-Information Services (LISGIS) and Central Bank of Liberia (CBL)

REAL SECTOR

CENTRAL BANK OF LIBERIA

2.2a: HCPI Inflation Rate - 2012 (Year-on-Year)

Function	Weight (%)	Jan-12	Feb-12	Mar-12	Apr-12	May-12	Jun-12
Food & Non-alcoholic Beverages	45.20	11.91	13.95	12.79	11.72	10.35	11.16
Alcoholic Beverages, Tobacco & Narcotics	3.03	8.63	8.93	4.43	2.85	1.86	0.29
Clothing & Footwear	7.75	3.43	3.99	4.28	3.26	3.53	4.1
Housing, Water, Electricity, Gas & other fuels	12.00	6.61	8.07	7.36	4.36	4.74	4.35
Furnishings, Household Equipment & Routine Maintenance of the House	5.25	7.81	7.41	7.73	7.34	7.65	8.21
Health	3.91	0	0	0	0	0	0
Transport	6.11	16.97	16.46	5.07	5.13	1.44	1.19
Communication	1.53	0.1	0.18	0.23	0.32	0.36	0.44
Recreation & Culture	3.85	4.35	4.58	2.81	-0.08	0.03	0.24
Education	3.20	0	0	0	0	0	0
Restaurants & Hotels	4.64	2.28	2.79	2.77	3.23	3.46	2.59
Miscellaneous Goods & Services	3.53	1.54	6.65	6.32	6.05	2.12	2.89
<b>General Rate of Inflation</b>	<b>100.00</b>	<b>8.93</b>	<b>10.3</b>	<b>8.69</b>	<b>7.67</b>	<b>6.69</b>	<b>7.08</b>

Function	Weight (%)	Jul-12	Aug-12	Sep-12	Oct-12	Nov-12	Dec-12
Food & Non-alcoholic Beverages	45.20	5.56	7.51	9.61	6.06	11.50	12.16
Alcoholic Beverages, Tobacco & Narcotics	3.03	1.2	1.02	4.37	6.17	5.40	-0.53
Clothing & Footwear	7.75	1.82	1.52	4.24	3.34	3.20	3.02
Housing, Water, Electricity, Gas & other fuels	12.00	4.96	1.08	2.22	2.35	1.08	1.37
Furnishings, Household Equipment & Routine Maintenance of the House	5.25	0.34	0.12	-0.72	4.09	1.89	0.37
Health	3.91	0	0.00	0	0.00	-2.60	-4.55
Transport	6.11	-0.49	-0.39	0.39	6.20	6.12	10.45
Communication	1.53	0.19	0.15	0.18	-0.03	0.10	0.08
Recreation & Culture	3.85	0.49	0.38	0.48	6.76	7.13	7.09
Education	3.20	0.00	0.00	0.00	0.00	0.00	0.00
Restaurants & Hotels	4.64	1.10	1.00	1.55	0.26	1.04	2.11
Miscellaneous Goods & Services	3.53	1.40	1.50	1.32	8.10	6.24	5.25
<b>General Rate of Inflation</b>	<b>100.00</b>	<b>3.58</b>	<b>4.25</b>	<b>5.68</b>	<b>4.84</b>	<b>7.30</b>	<b>7.71</b>

The Harmonized Consumer Price Index (HCPI) is an amalgamation of the Classification of Individual Consumption by Purpose (COICOP), consisting of twelve functions (major groups) together with the Monrovia Consumer Price Index (MCPI) and its weights, obtained from the 1964 limited expenditure survey.

The Survey sample comprised wage-earner and clerical-employee households of two or more persons with monthly income not exceeding US\$250.

Sources : Liberia Institute for Statistics & Geo-Information Services (LISGIS) and Central Bank of Liberia (CBL)



## REAL SECTOR

CENTRAL BANK OF LIBERIA

**2.2b: HCPI Inflation Rate (Year-on-Year) - 2013**

Function	Weight (%)	Jan-13	Feb-13	Mar-13	Apr-13	May-13	Jun-13
Food & Non-alcoholic Beverages	45.20	13.37	7.74	13.68	15.01	9.89	11.10
Alcoholic Beverages, Tobacco & Narcotics	3.03	-0.31	2.76	6.32	4.73	3.98	7.80
Clothing & Footwear	7.75	-0.84	2.41	1.49	-0.06	0.31	2.53
Housing, Water, Electricity, Gas & other fuels	12.00	0.74	-0.21	-0.18	1.02	-0.18	-0.05
Furnishings, Household Equipment & Routine Maintenance of the House	5.25	-2.55	-1.12	-1.22	-5.43	1.37	6.97
Health	3.91	0.00	0.00	-3.25	-3.25	0.00	0.00
Transport	6.11	10.94	10.89	10.52	9.62	8.67	0.25
Communication	1.53	0.15	0.15	0.15	0.07	0.11	0.15
Recreation & Culture	3.85	6.70	6.58	6.54	6.59	9.51	8.15
Education	3.20	0.00	0.00	0	0	0.00	0.00
Restaurants & Hotels	4.64	2.50	2.45	2.35	2.47	3.49	2.23
Miscellaneous Goods & Services	3.53	5.38	5.44	5.3	5.31	4.26	3.99
<b>General Rate of Inflation</b>	<b>100.00</b>	<b>8.00</b>	<b>5.48</b>	<b>8.38</b>	<b>8.69</b>	<b>6.48</b>	<b>7.03</b>

Function	Weight (%)	Jul-13	Aug-13	Sep-13	Oct-13	Nov-13	Dec-13
Food & Non-alcoholic Beverages	45.20	8.79	8.13	9.09	11.62	8.11	7.71
Alcoholic Beverages, Tobacco & Narcotics	3.03	10.22	10.37	7.34	6.43	6.47	8.04
Clothing & Footwear	7.75	6.18	8.68	8.57	9.50	10.17	10.56
Housing, Water, Electricity, Gas & other fuels	12.00	(0.76)	2.40	2.59	1.29	1.89	0.86
Furnishings, Household Equipment & Routine Maintenance of the House	5.25	12.56	13.86	13.69	7.27	8.90	13.69
Health	3.91	-	-	-	-	2.67	4.76
Transport	6.11	2.31	2.42	2.77	-2.94	-2.11	14.36
Communication	1.53	0.36	0.76	0.94	1.27	1.30	1.40
Recreation & Culture	3.85	8.96	9.50	14.55	8.06	9.07	9.30
Education	3.20	-	-	0.00	0.00	0.00	0.00
Restaurants & Hotels	4.64	8.58	10.36	11.08	13.12	13.29	12.55
Miscellaneous Goods & Services	3.53	6.26	8.02	10.11	5.74	6.26	15.83
<b>General Rate of Inflation</b>	<b>100.00</b>	<b>7.10</b>	<b>7.49</b>	<b>8.18</b>	<b>8.54</b>	<b>7.04</b>	<b>8.49</b>

The Harmonized Consumer Price Index (HCPI) is an amalgamation of the Classification of Individual Consumption by Purpose (COICOP), consisting of twelve functions (major groups) together the Monrovia Consumer Price Index (MCPI) and its weights, obtained from the 1964 limited expenditure survey.

The Survey sample comprised wage-earner and clerical-employee households of two or more persons with monthly income not exceeding US\$250.

Sources : Liberia Institute for Statistics & Geo-Information Services (LISGIS) and Central Bank of Liberia (CBL)

REAL SECTOR

CENTRAL BANK OF LIBERIA

2.2c: HCPI Inflation Rate (Year-on-Year) - 2014

Function	Weight (%)	Jan-14	Feb-14	Mar-14	Apr-14	May-14	Jun-14
Food & Non-alcoholic Beverages	45.20	5.55	6.40	5.48	5.42	7.28	9.17
Alcoholic Beverages, Tobacco & Narcotics	3.03	11.81	8.66	10.40	15.43	14.05	13.86
Clothing & Footwear	7.75	14.89	15.17	19.67	22.77	18.01	22.30
Housing, Water, Electricity, Gas & other fuels	12.00	0.07	-0.24	1.83	2.62	0.79	1.59
Furnishings, Household Equipment & Routine Maintenance of the House	5.25	23.00	12.06	20.04	27.42	17.22	12.56
Health	3.91	5.19	8.12	22.15	22.15	15.91	17.21
Transport	6.11	8.50	12.59	12.65	12.98	13.72	24.36
Communication	1.53	1.43	1.02	1.47	1.80	1.62	1.87
Recreation & Culture	3.85	9.88	9.64	11.91	12.75	9.34	8.57
Education	3.20	0.00	0.00	0.00	0.00	0.00	0.00
Restaurants & Hotels	4.64	12.60	12.34	14.98	16.41	14.34	17.40
Miscellaneous Goods & Services	3.53	15.27	14.11	18.72	19.91	20.47	23.81
<b>General Rate of Inflation</b>	<b>100.00</b>	<b>7.68</b>	<b>7.86</b>	<b>8.91</b>	<b>9.78</b>	<b>9.58</b>	<b>11.66</b>

*The Harmonized Consumer Price Index (HCPI) is an amalgamation of the Classification of Individual Consumption by Purpose (COICOP), consisting of twelve functions (major groups) together the Monrovia Consumer Price Index (MCPI) and its weights, obtained from the 1964 limited expenditure survey.*

*The Survey sample comprised wage-earner and clerical-employee households of two or more persons with monthly income not exceeding US\$250.*

**Sources :** Liberia Institute for Statistics & Geo-Information Services (LISGIS) and Central Bank of Liberia (CBL)

REAL SECTOR

CENTRAL BANK OF LIBERIA

2.3a: Key Output Volume - 2012

Commodity	Unit	Jan-12	Feb-12	Mar-12	Apr-12	May-12	Jun-12	Jan-Jun
								Total
<b>Agriculture</b>								
Rubber	Mt.	5,766	3,564	12,125	344	947	12,097	34,843
Cocoa Beans	Mt.	1,305	1,230	963	672	674	367	5,210
Coffee	Mt.	-	-	-	38	97	-	135
Round Logs	M <sup>3</sup>	22,509	8,177	14,256	26,027	19,547	7,949	98,466
Sawn Timber	Pcs.	34,632	50,908	7,160	30,110	20,585	10,881	154,276
Fish	Kg.	-	-	-	-	-	-	-
<b>Mining</b>								
Gold	Ounces	1,645	1,458	1,558	2,098	1,118	2,288	10,165
Diamond	Carat	2,856	3,288	3,802	2,644	3,400	1,282.00	17,272
Iron Ore	Mt.	132,000	396,000	462,000	396,000	189,000	-	1,575,000
<b>Manufacturing</b>								
Cement	Mt.	10,662	14,580	12,462	13,322	11,065	9,362	71,452
Spirit	Litre	52,453	53,100	58,243	59,624	63,063	66,234	352,717
Beer	Litre	733,228	721,010	913,481	725,199	753,233	786,849	4,633,000
Stout	Litre	309,324	378,774	438,926	385,569	370,466	490,525	2,373,584
Malta	Litre	98,208	96,188	62,220	33,343	50,157	52,953	393,070
Soft Drink	Litre	1,095,732	1,156,334	1,178,100	1,120,637	1,194,912	1,123,992	6,869,707
Oil Paint	Gal.	4,538	3,172	3,040	4,125	2,760	1,589	19,223
Water Paint	Gal.	29,245	20,235	20,627	27,180	24,840	17,975	140,102
Varnish	Gal.	1,134	793	760	1,031	690	397	4,806
Manoline Hair Grease	Kg.	4,276	1,050	4,696	1,957	3,436	4,696	20,111
Thinner	Gal.	1,745	1,470	875	1,620	1,500	860	8,070
Rubbing Alcohol	Litre	20,676	-	11,237	22,473	25,440	11,237	91,062
Soap	Kg.	35,520	68,321	20,718	32,027	28,222	20,718	205,526
Chlorox	Litre	66,238	55,587	55,984	62,131	49,546	55,984	345,468
Nail	Kg.	-	-	-	-	-	-	-
Candle	Kg.	31,574	21,011	31,563	13,640	26,250	31,563	155,601
Mattresses	Pcs.	10,050	9,833	9,970	8,975	9,039	7,750	55,617
Finished Water <sup>1</sup>	Gal.	68,366,386	59,415,052	52,688,677	199,794,720	185,545,039	178,825,333	744,635,206

1: Water from White Plains Treatment Plant

Sources : Lands, Mines & Energy; Commerce & Industry; Forestry Development Authority (FDA);

Liberia Produce Marketing Corporation (LPMC) and Liberia Water & Sewer Corporation (LWSC), Monrovia, Liberia

REAL SECTOR

CENTRAL BANK OF LIBERIA

2.3a: Key Output Volume - 2012 (contd.)

Commodity	Unit	Jul-12	Aug-12	Sep-12	Oct-12	Nov-12	Dec-12	Jul - Dec.
								Total
<b>Agriculture</b>								
Rubber	Mt.	856	601	8,573	6,861	4,213	7,837	28,940
Cocoa Beans	Mt.	165	255	213	397	916	927	2,873
Coffee	Mt.	na	na	na	na	na	na	-
Round Logs	M <sup>3</sup>	33,428	4,916	627	28,542	23,345	24,449	115,307
Sawn Timber	Pcs.	29,593	21,020	12,112	31,442	35,372	31,442	160,981
Fish	Kg.	-	-	-	-	-	-	-
<b>Mining</b>								
Gold	Ounces	2,161	1,131	1,835	1,753	1,463	2,102	10,444
Diamond	Carat	2,819	3,092	3,841	1,853	3,018	2,377	17,000
Iron Ore	Mt.	22,800	342,000	110,850	na	57,000	57,000	589,650
<b>Manufacturing</b>								
Cement	Mt.	9,370	7,759	4,695	8,016	10,585	9,714	50,139
Spirit	Litre	81,436	75,576	50,651	na	47,022	55,386	310,071
Beer	Litre	846,940	957,096	179,382	837,805	954,732	720,377	4,496,333
Stout	Litre	510,777	805,163	53,761	488,957	424,251	602,965	2,885,874
Malta	Litre	70,194	102,532	-	172,102	68,785	-	413,613
Soft Drink	Litre	863,006	648,130	649,908	935,626	894,809	1,324,274	5,315,753
Oil Paint	Gal.	6,116	6,322	5,529	6,018	2,360	3,697	30,042
Water Paint	Gal.	33,192	36,429	32,731	31,893	11,227	19,166	164,638
Varnish	Gal.	1,529	1,581	1,382	1,504	590	924	7,510
Manoline Hair Grease	Kg.	-	5,687	3,058	na	na	1,789	10,533
Thinner	Gal.	2,611	2,217	1,563	2,172	675	1,026	10,264
Rubbing Alcohol	Litre	12,450	21,979	28,317	na	na	19,372	82,118
Soap	Kg.	38,113	40,784	39,414	na	na	na	118,311
Chlorox	Litre	55,666	79,512	79,723	na	na	67,854	282,755
Nail	Kg.	-	-	-	-	-	-	-
Candle	Kg.	30,345	25,788	40,919	na	na	15,257	112,309
Mattresses	Pcs.	7,026	5,830	8,940	8,279	6,890	16,085	53,050
Finished Water <sup>1</sup>	Gal.	148,477,928	167,903,679	128,643,393	114,726,284	113,159,967	101,083,921	773,995,172

1: Water from White Plains Treatment Plant

Sources : Lands, Mines & Energy; Commerce & Industry; Forestry Development Authority (FDA);  
Liberia Produce Marketing Corporation (LPMC) and Liberia Water & Sewer Corporation (LWSC), Monrovia, Liberia

## REAL SECTOR

## CENTRAL BANK OF LIBERIA

## 2.3b: Key Output Volume - 2013

Commodity	Unit	Jan-13	Feb-13	Mar-13	Apr-13	May-13	Jun-13	Jan - Jun
								Total
<b>Agriculture</b>								
Rubber	Mt.	875	1,276	7,988	1,079	8,435	6,098	25,751
Cocoa Beans	Mt.	876	403	315	325	1,487	674	4,080
Coffee	Mt.	-	-	96	54	38	-	188
Round Logs+	M <sup>3</sup>	-	-	-	14,535	11,038	5,337	30,909
Sawn Timber	Pcs.	34,575	14,753	51,633	70,462	58,488	54,497	284,408
Fish	Kg.	-	-	-	-	-	-	-
<b>Mining</b>								
Gold	Ounces	1,732	1,822	1,887	1,309	1,727	1,199	9,676
Diamond	Carat	4,683	2,785	3,938	3,178	7,489	4,098	26,171
Iron Ore	Mt.	297,000	482,000	398,500	344,375	649,000	212,000	2,382,875
<b>Manufacturing</b>								
Cement	Mt.	9,763	3,870	6,858	14,158	20,764	18,954	74,367
Spirit	Litre	48,620	38,401	35,307	29,998	30,168	34,338	216,831
Beer	Litre	857,690	754,370	766,578	804,509	954,245	848,255	4,985,648
Stout	Litre	556,958	459,107	459,930	443,441	509,359	513,493	2,942,288
Malta	Litre	66,512	49,476	68,841	132,858	-	132,953	450,640
Soft Drink	Litre	1,143,965	1,081,794	1,372,644	1,411,711	1,365,314	1,020,773	7,396,201
Oil Paint	Gal.	10,282	8,339	13,482	8,647	5,649	6,538	52,937
Water Paint	Gal.	12,593	11,216	2,701	5,797	10,479	10,131	52,917
Varnish	Gal.	1,948	1,647	1,955	682	1,033	1,287	8,552
Manoline Hair Grease	Kg.	3,914	916	-	2,528	5,032	4,948	17,337
Thinner	Gal.	1,862	1,021	1,847	1,365	1,200	1,378	8,673
Rubbing Alcohol	Litre	27,912	13,484	12,990	15,507	20,451	22,743	113,087
Soap	Kg.	22,886	21,343	25,269	42,463	35,507	18,434	165,902
Chlorox	Litre	91,461	36,484	71,881	78,955	55,984	55,931	390,696
Nail	Kg.	na	na	na	na	na	na	-
Candle	Kg.	21,032	10,962	9,440	5,849	13,902	16,674	77,859
Mattresses	Pcs.	9,030	8,540	10,670	9,820	9,010	8,536	55,606
Finished Water <sup>1</sup>	Gal.	103,383,136	90,818,270	95,067,793	157,454,314	154,057,016	179,680,383	780,460,911
Mineral Water	Gal.	1,062,606	937,782	1,072,553	868,979	779,862	738,988	5,460,769

1: Water from White Plains Treatment Plant

+ Actual for the Second Quarter

Sources : Lands, Mines &amp; Energy; Commerce &amp; Industry; Forestry Development Authority (FDA);

Liberia Produce Marketing Corporation (LPMC) and Liberia Water &amp; Sewer Corporation (LWSC), Monrovia, Liberia

## REAL SECTOR

CENTRAL BANK OF LIBERIA

## 2.3b: Key Output Volume - 2013 (continue)

Commodity	Unit	Jul-13	Aug-13	Sep-13	Oct-13	Nov-13	Dec-13	Jul - Dec.
								Total
<b>Agriculture</b>								
Rubber	Mt.	-	7,656	5,073	1,109	11,398	5,443	30,680
Cocoa Beans	Mt.	1,085	354	578	1,376	1,151	460	5,005
Coffee	Mt.	na	na	14	na	na	na	14
Round Logs	M <sup>3</sup>	7,358	14,167	18,651	1,001	-	12,470	53,646
Sawn Timber	Pcs.	48,951	27,786	28,531	34,835	44,252	32,839	217,194
Fish	Kg.	na	na	na	na	na	na	na
<b>Mining</b>								
Gold	Ounces	2,035	1,873	1,106	2,021	982	1,175	9,192
Diamond	Carat	1,726	4,980	877	5,175	3,490	5,402	21,649
Iron Ore	Mt.	491,600	331,000	255,800	555,650	407,670	523,500	2,565,220
<b>Manufacturing</b>								
Cement	Mt.	22,026	17,184	14,474	16,297	24,572	25,074	119,625
Spirits	Litre	36,614	30,250	26,801	29,999	28,079	31,298	183,041
Beer	Litre	865,423	387,432	550,571	693,402	787,118	824,741	4,108,688
Stout	Litre	564,680	351,759	412,553	523,512	488,070	549,791	2,890,364
Malta	Litre	-	66,536	71,470	65,784	145,720	-	349,510
Soft Drink	Litre	1,033,445	988,927	734,681	871,373	988,574	1,407,290	6,024,290
Oil Paint	Gal.	10,902	10,858	9,798	12,442	12,335	37,274	93,608
Water Paint	Gal.	4,217	9,369	10,414	11,350	12,026	35,150	82,526
Varnish	Gal.	906	1,577	1,512	1,826	1,642	2,700	10,163
Manoline Hair Grease	Kg.	5,737	5,048	5,216	4,704	3,024	4,662	28,392
Thinner	Gal.	1,643	1,812	1,699	2,189	1,720	1,820	10,883
Rubbing Alcohol	Litre	15,237	17,979	22,428	44,947	19,462	27,418	147,471
Soap	Kg.	21,627	24,371	17,862	17,645	14,650	30,233	126,387
Chlorox	Litre	63,614	61,177	82,691	45,624	56,169	66,238	375,514
Nail	Kg.	na	na	na	na	na	na	na
Candle	Kg.	19,709	12,485	14,459	12,579	16,170	18,816	94,217
Mattresses	Pcs.	13,850	4,090	3,140	3,610	9,020	11,030	44,740
Finished Water <sup>1</sup>	Gal.	189,605,833	139,226,672	193,813,515	178,375,026	153,646,882	174,652,932	1,029,320,860
Mineral Water	Gal.	586,631	618,626	510,498	399,944	1,104,222	992,870	4,212,792

1: Water from White Plains Treatment Plant

Sources : Lands, Mines & Energy; Commerce & Industry; Forestry Development Authority (FDA);  
Liberia Produce Marketing Corporation (LPMC) and Liberia Water & Sewer Corporation (LWSC), Monrovia, Liberia

REAL SECTOR

CENTRAL BANK OF LIBERIA

2.3c: Key Output Volume - 2014

Commodity	Unit	Jan-14	Feb-14	Mar-14	Apr-14	May-14	Jun-14	Jan - Jun
								Total
<b>Agriculture</b>								
Rubber	Mt.	2,873	7,967	3,745	4,222	2,158	4,726	25,691
Cocoa Beans	Mt.	975	662	375	379	340	100	2,830
Coffee	Mt.	-	-	-	-	-	-	-
Round Logs	M <sup>3</sup>	168	4,412	2,288	11,858	28,165	12,034	58,925
Sawn Timber	Pcs.	47,173	55,972	89,288	172,276	100,839	-	465,548
Fish	Kg.	na	na	na	na	na	na	-
<b>Mining</b>								
Gold	Ounces	1,495	1,497	1,067	2,824	2,037	1,776	10,696
Diamond	Carat	6,328	4,576	6,720	3,424	11,719	4,411	37,179
Iron Ore	Mt.	541,430	409,000	490,000	629,000	523,650	205,175	2,798,255
<b>Manufacturing</b>								
Cement	Mt.	29,400	21,613	42,297	36,272	30,826	26,198*	186,606
Spirits	Litre	29,074	31,311	31,917	34,025	36,384	34,281	196,991
Beer	Litre	775,714	643,003	563,195	524,986	704,146	681,182	3,892,225
Stout	Litre	545,316	460,619	429,367	523,472	271,228	357,762	2,587,765
Malta	Litre	69,823	69,157	68,928	-	72,468	69,070	349,446
Soft Drink	Litre	1,241,395	813,737	1,217,828	1,190,398	1,202,782	925,099	6,591,239
Oil Paint	Gal.	11,234	9,865	8,098	9,779	7,677	6,224	52,876
Water Paint	Gal.	16,345	11,500	15,451	12,877	13,839	8,467	78,479
Varnish	Gal.	1,247	1,540	902	820	834	672	6,015
Manoline Hair Grease	Kg.	2,344	1,814	3,184	168	1,806	202	9,517
Thinner	Gal.	642	632	455	1,178	1,350	-	4,257
Rubbing Alcohol	Litre	15,327	23,327	20,855	27,642	31,013	20,136	138,302
Soap	Kg.	24,807	22,962	23,108	31,059	14,179	17,227	133,341
Chlorox	Litre	60,621	56,381	91,381	85,526	91,673	56,514	442,096
Nail	Kg.	na	na	na	na	na	na	-
Candle	Kg.	24,885	23,825	16,338	16,863	13,220	21,200	116,330
Mattresses	Pcs.	11,810	11,010	12,700	10,000	10,496	9,501	65,517
Finished Water <sup>1</sup>	Gal.	157,454,314	131,832,564	139,748,723	166,140,525	171,042,200	163,640,241	929,858,567
Mineral Water	Gal.	837,427	767,786	647,030	491,152	393,186	320,035	3,456,616

1: Water from White Plains Treatment Plant

\* Estimate

Sources : Lands, Mines & Energy; Commerce & Industry; Forestry Development Authority (FDA);

Liberia Produce Marketing Corporation (LPMC) and Liberia Water & Sewer Corporation (LWSC), Monrovia, Liberia

REAL SECTOR

CENTRAL BANK OF LIBERIA

2.4a: Key Output Value - 2012

Liberian dollars

Commodity	Unit	Jan-12	Feb-12	Mar-12	Apr-12	May-12	Jun-12	Jan-Jun
								Total
<b>Agriculture</b>								
Rubber <sup>3*</sup>	Mt.	1,065,111,275.00	1,896,180,510.00	61,564,658.00	37,756,280.00	101,535,862.00	2,866,908,433.00	6,029,057,018.00
Cocoa Beans <sup>4</sup>	Mt.	237,937,960.00	225,828,750.00	177,216,075.00	51,701,266.00	52,491,935.00	28,836,978.00	774,012,964.00
Coffee <sup>4</sup>	Mt.	-	-	-	1,704,960.00	4,349,611.00	-	6,054,571.00
Round Logs <sup>3</sup>	M <sup>3</sup>	37,919,136	12,989,519	14,927,001	43,798,978	34,897,865	24,914,487	169,446,986.00
Sawn Timber <sup>4</sup>	Pcs.	1,090,664	2,314,759	316,229	1,226,294	773,154	627,419	6,348,519.00
Fish <sup>4</sup>	Kg.	-	-	-	-	-	-	-
<b>Mining<sup>4</sup></b>								
Gold	Ounces	148,130,831.39	141,694,387.07	147,852,704.67	196,146,216.70	103,992,597.00	210,497,371.65	948,314,108.48
Diamond	Carat	97,685,779.00	91,286,863.00	101,742,265.00	46,508,412.00	123,701,605.00	35,364,662.00	496,289,586.00
Iron Ore	Mt.	434,280,894.00	1,387,589,595.00	1,781,412,055.00	1,591,656,380.00	810,413,148.00	-	6,005,352,072.00
<b>Manufacturing<sup>4</sup></b>								
Cement	Mt.	129,055,682.75	177,885,699.60	152,273,974.27	167,590,760.00	140,871,834.50	120,224,931.60	887,902,882.72
Spirit	Litre	3,707,600.00	3,635,550.00	3,106,850.00	3,965,500.00	4,210,500.00	4,092,050.00	22,718,050.00
Beer	Litre	86,691,900.00	87,757,855.00	127,923,825.00	100,996,780.00	121,386,860.00	113,017,640.00	637,774,860.00
Stout	Litre	46,382,800.00	68,254,080.00	87,324,000.00	79,233,460.00	95,026,700.00	95,232,540.00	471,453,580.00
Malta	Litre	-	8,923,770.00	15,395,625.00	8,834,840.00	10,232,025.00	8,771,280.00	52,157,540.00
Soft Drink	Litre	81,335,050.00	75,935,665.00	91,342,450.00	76,793,790.00	83,798,530.00	75,549,320.00	484,754,805.00
Oil Paint	Gal.	4,549,624.64	3,205,702.50	3,076,898.00	3,981,274.00	2,727,568.69	1,797,323.22	19,338,391.05
Water Paint	Gal.	13,068,321.34	9,177,173.25	9,257,517.48	12,304,276.00	11,026,391.71	8,164,816.44	62,998,496.22
Varnish	Gal.	1,137,406.16	801,425.63	769,224.50	995,318.50	681,892.17	449,330.81	4,834,597.76
Manoline Hair Grease	Kg.	959,262.60	364,560.00	718,801.65	642,320.00	884,525.79	573,726.30	4,143,196.34
Thinner	Gal.	1,399,699.400	1,188,495.00	708,496.250	1,174,602.00	1,533,073.190	757,817.28	6,762,183.12
Rubbing Alcohol	Litre	110,291.50	201,757.50	206,292.03	203,500.00	402,833.31	530,253.03	1,654,927.37
Soap	Kg.	3,333,264.35	2,791,530.00	2,361,022.35	3,089,278.00	3,225,474.86	2,052,988.35	16,853,557.90
Chlorox	Litre	1,759,741.90	1,872,780.00	1,338,965.90	1,705,145.00	2,054,157.81	2,921,282.88	11,652,073.49
Nail	Kg.	-	-	-	-	-	-	-
Candle	Kg.	6,760,049.00	4,771,620.00	5,604,665.00	5,431,230.00	4,765,251.00	5,258,717.00	32,591,532.00
Mattresses	Pcs.	36,071,804.55	31,976,488.11	35,735,872.90	31,074,957.64	32,458,295.83	27,632,873.44	194,950,292.47
Finished Water <sup>2*</sup>	Gal.	7,192,564.00	15,477,653.52	14,160,055.37	12,984,330.08	12,147,596.11	12,264,629.83	74,226,829.00

1. Water from White Plains Treatment Plant.
2. Represents Export values
3. Represents quantity sold, not quantity produced

\* Estimates

Sources : Lands, Mines & Energy; Commerce & Industry; Forestry Development Authority (FDA);

Liberia Produce Marketing Corporation (LPMC) and Liberia Water & Sewer Corporation (LWSC), Monrovia, Liberia



REAL SECTOR

CENTRAL BANK OF LIBERIA

2.4a: Key Output Value - 2012 (contd.)

Liberian dollars

								Jul - Dec.
Commodity	Unit	Jul-12	Aug-12	Sep-12	Oct-12	Nov-12	Dec-12	Total
<b>Agriculture</b>								
Rubber <sup>3*</sup>	Mt.	90,331,605	64,355,190	1,831,682,440	1,277,726,125	631,637,244	1,655,170,650	5,550,903,254
Cocoa Beans <sup>4</sup>	Mt.	13,693,680	20,983,229	17,491,219	36,009,535	83,385,747	87,362,500	258,925,910
Coffee <sup>4</sup>	Mt.	-	-	-	-	-	-	-
Round Logs <sup>3</sup>	M <sup>3</sup>	22,769,993	20,492,994	18,853,554	30,478,894	28,063,713	30,018,406	150,677,554
Sawn Timber <sup>4</sup>	Pcs.	573,415	516,073	474,787	508,426	592,226	480,488	3,145,415
Fish <sup>4</sup>	Kg.	-	-	-	-	-	-	-
<b>Mining<sup>4</sup></b>								
Gold	Ounces	193,541,706	102,320,508	174,692,607	169,783,961	139,038,329	200,258,741	979,635,851
Diamond	Carat	107,334,852	50,653,347	103,424,185	43,386,843	53,558,347	56,462,473	414,820,047
Iron Ore	Mt.	93,243,068,100	1,142,396,906	272,971,093	na	132,920,493	145,298,700	94,936,655,292
<b>Manufacturing<sup>4</sup></b>								
Cement	Mt.	112,479,354	92,373,843	55,075,638	93,578,874	122,364,912	112,687,040	588,559,661
Spirit	Litre	4,103,650	3,441,300	2,783,050	na	2,835,525	3,302,075	16,465,600
Beer	Litre	128,266,225	81,880,230	67,607,355	82,444,780	107,547,790	181,586,550	649,332,930
Stout	Litre	107,795,420	73,511,440	84,406,020	87,357,500	106,733,020	154,298,660	614,102,060
Malta	Litre	9,800,725	7,601,095	5,998,475	6,832,700	8,455,750	15,665,270	54,354,015
Soft Drink	Litre	65,048,140	48,490,570	49,521,440	58,532,280	67,244,840	99,538,160	388,375,430
Oil Paint	Gal.	3,844,012	4,781,627	4,025,341	4,485,663	6,210,971	6,312,213	29,659,827
Water Paint	Gal.	10,247,126	11,507,410	9,315,460	10,201,080	14,991,637	14,657,970	70,920,683
Varnish	Gal.	961,003	1,195,407	1,006,335	1,121,416	1,552,743	1,578,053	7,414,957
Manoline Hair Grease	Kg.	783,311	756,359	525,044	na	501,704	692,230	3,258,648
Thinner	Gal.	1,300,900	1,489,054	727,481	1,397,460	708,713	1,525,618	7,149,226
Rubbing Alcohol	Litre	594,097	511,343	440,617	na	57,222	1,348,246	2,951,525
Soap	Kg.	2,647,689	2,808,237	4,169,855	na	476,128	411,438	10,513,347
Chlorox	Litre	2,137,785	1,896,042	2,748,767	na	804,432	1,348,246	8,935,272
Nail	Kg.	-	-	-	-	-	-	-
Candle	Kg.	8,071,713	6,613,512	8,448,810	na	3,861,040	3,132,000	30,127,075
Mattresses	Pcs.	25,763,489	23,493,971	29,416,403	28,103,688	24,734,017	49,275,870	180,787,437
Finished Water <sup>2*</sup>	Gal.	na	na	12,289,752	13,820,820	13,478,888	15,634,019	55,223,478

1. Water from White Plains Treatment Plant.
2. Represents Export values
3. Represents quantity sold, not quantity produced

\* Estimates

Sources : Lands, Mines & Energy; Commerce & Industry; Forestry Development Authority (FDA);

Liberia Produce Marketing Corporation (LPMC) and Liberia Water & Sewer Corporation (LWSC), Monrovia, Liberia

**REAL SECTOR**

**CENTRAL BANK OF LIBERIA**

**2.4b: Key Output Value - 2013**

*Liberian dollars*

Commodity	Unit	Jan-13	Feb-13	Mar-13	Apr-13	May-13	Jun-13	Jan - Jun, 2013
								Total
<b>Agriculture</b>								
Rubber <sup>3*</sup>	Mt.	82,705,030.40	203,438,640.00	1,775,098,239.00	205,990,352.96	1,638,764,377.77	935,658,561.06	4,841,655,201.19
Cocoa Beans <sup>4</sup>	Mt.	74,363,903.00	34,994,960.00	29,577,029.00	29,189,059.20	127,228,960.47	60,901,974.83	356,255,886.50
Coffee <sup>4</sup>	Mt.	-	-	6,420,708.00	4,007,181.02	2,875,150.08	-	13,303,039.10
Round Logs <sup>3</sup>	M <sup>3</sup>	-	-	-	216,223,303	167,553,646	92,441,695	476,218,643.66
Sawn Timber <sup>4</sup>	Pcs.	1,232,038	681,435	2,384,907	1,219,550.08	1,707,195.99	836,107.65	8,061,233.76
Fish <sup>4</sup>	Kg.	-	-	-	-	na	na	-
<b>Mining<sup>4</sup></b>								
Gold	Ounces	163,927,102.89	169,703,590.23	171,027,811.00	115,000,904.00	142,708,599.09	97,054,161.25	859,422,168.46
Diamond	Carat	141,762,384.02	72,452,097.81	87,471,229.00	96,510,464.00	191,865,878.60	83,835,910.67	673,897,964.10
Iron Ore	Mt.	1,450,426,602.00	1,869,203,212.00	1,846,146,058.00	1,955,735,328.00	3,654,870,422.10	1,097,788,727.20	11,874,170,349.30
<b>Manufacturing<sup>4</sup></b>								
Cement	Mt.	115,526,703.36	45,553,770.00	80,729,049.00	167,860,593.00	248,121,443.51	229,220,415.28	887,011,974.15
Spirit	Litre	2,721,350.00	2,114,025.00	2,135,875.00	2,114,250.00	1,881,250.00	2,404,500.00	13,371,250.00
Beer	Litre	92,232,780.00	116,695,215.00	126,373,730.00	124,876,860.00	125,590,735.00	101,016,380.00	686,785,700.00
Stout	Litre	91,817,920.00	103,926,580.00	112,924,090.00	111,905,060.00	114,668,930.00	100,205,220.00	635,447,800.00
Malta	Litre	8,667,995.00	8,663,200.00	9,765,990.00	9,752,730.00	9,986,990.00	7,902,960.00	54,739,865.00
Soft Drink	Litre	82,480,120.00	76,013,800.00	86,946,740.00	93,625,770.00	102,943,240.00	78,512,300.00	520,521,970.00
Oil Paint	Gal.	8,941,486.65	3,835,464.88	6,841,894.00	9,847,949.00	10,325,442.47	7,862,705.45	47,654,942.45
Water Paint	Gal.	5,957,470.60	3,359,056.00	3,705,965.00	4,033,850.00	5,008,218.60	4,593,088.86	26,657,649.06
Varnish	Gal.	1,494,694.62	966,525.75	1,228,021.00	1,500,312.00	1,675,469.21	1,385,641.89	8,250,664.47
Manoline Hair Grease	Kg.	653,437.00	602,780.00	-	248,907.68	1,069,105.68	785,376.94	3,359,607.30
Thinner	Gal.	743,593.84	745,745.00	1,362,829.00	1,706,184.00	1,522,431.90	1,133,251.24	7,214,034.98
Rubbing Alcohol	Litre	301,017.20	191,539.50	209,531.25	394,898.00	363,969.38	378,873.00	1,839,828.33
Soap	Kg.	17,191,262.40	4,384,474.00	2,037,388.75	4,233,006.40	3,053,561.25	3,596,614.60	34,496,307.40
Chlorox	Litre	2,277,968.00	1,431,368.50	1,337,908.25	1,776,271.84	1,571,780.48	1,262,182.87	9,657,479.94
Nail	Kg.	na	na	na	na	na	na	-
Candle	Kg.	3,848,286.72	2,300,560.00	2,229,040.00	1,056,563.20	2,323,353.60	3,100,788.48	14,858,592.00
Mattresses	Pcs.	33,223,514.65	27,125,753.96	32,756,933.00	32,639,751.00	30,075,196.72	29,295,179.07	185,116,328.40
Finished Water <sup>2*</sup>	Gal.	16,896,605.76	17,620,218.50	17,071,973.00	16,052,997.00	19,267,134.26	18,104,789.97	105,013,718.49
Mineral Water	Gal.	33,846,560.00	31,427,375.00	34,283,165.00	33,075,935.00	31,168,640.00	26,036,475.00	189,838,150.00

1. Water from White Plains Treatment Plant.
2. Represents Export values
3. Represents quantity sold, not quantity produced

\* Estimates

*Sources : Lands, Mines & Energy; Commerce & Industry; Forestry Development Authority (FDA); Liberia Produce Marketing Corporation (LPMC) and Liberia Water & Sewer Corporation (LWSC), Monrovia, Liberia*

REAL SECTOR

CENTRAL BANK OF LIBERIA

2.4b: Key Output Value - 2013 (contd)

Liberian dollars

Commodity	Unit	Jul-13	Aug-13	Sep-13	Oct-13	Nov-13	Dec-13	Jul - Dec., 2013
								Total
<b>Agriculture</b>								
Rubber <sup>3</sup>	Mt.	-	61,806,326	789,538,536	201,645,762	184,152,407	813,465,354	2,050,608,386
Cocoa Beans <sup>4</sup>	Mt.	103,729,726	37,344,608	59,059,750	136,214,543	113,367,342	45,612,728	495,328,696
Coffee <sup>4</sup>	Mt.	-	-	1,434,954	-	-	-	1,434,954
Round Logs <sup>3</sup>	M <sup>3</sup>	111,430,438	224,035,463	23,884,850	14,856,883	-	204,280,796	578,488,430
Sawn Timber <sup>4</sup>	Pcs.	152,745,558	96,942,245	111,570,862	157,799,568	167,347,721	137,238,659	823,644,612
Fish <sup>4</sup>	Kg.	na	na	na	na	na	na	-
<b>Mining<sup>4</sup></b>								
Gold	Ounces	150,663,140	150,002,066	93,303,797	163,246,928	77,895,290	90,837,517	725,948,739
Diamond	Carat	95,381,061	103,762,771	62,677,968	118,319,405	99,084,800	176,576,337	655,802,341
Iron Ore	Mt.	2,085,109,824	1,372,966,886	1,402,630,479	3,188,585,365	2,278,465,508	3,028,617,029	13,356,375,091
<b>Manufacturing<sup>4</sup></b>								
Cement	Mt.	268,171,035	213,425,600	182,124,304	203,516,396	310,412,601	320,277,223	1,497,927,158
Spirit	Litre	2,554,900	2,227,750	1,832,700	1,978,500	1,838,300	2,137,350	12,569,500
Beer	Litre	145,881,270	85,302,700	76,096,870	88,470,495	100,628,300	198,123,955	694,503,590
Stout	Litre	135,845,930	85,884,500	80,354,950	91,752,520	99,698,420	188,647,250	682,183,570
Malta	Litre	10,998,065	6,204,575	5,933,850	6,929,455	8,077,550	15,119,715	53,263,210
Soft Drink	Litre	77,184,370	66,801,640	51,386,520	62,495,650	78,681,490	122,351,980	458,901,650
Oil Paint	Gal.	8,608,469	9,820,885	8,447,415	12,237,274	11,552,951	27,290,768	77,957,761
Water Paint	Gal.	2,689,047	4,156,661	4,733,961	5,386,024	4,051,591	13,816,759	34,834,043
Varnish	Gal.	1,227,566	1,498,464	1,419,185	1,776,206	1,502,098	2,014,002	9,437,521
Manoline Hair Grease	Kg.	1,249,374	389,906	913,471	520,482	591,964	890,936	4,556,132
Thinner	Gal.	1,247,756	1,520,160	1,385,895	1,110,496	987,875	1,803,161	8,055,344
Rubbing Alcohol	Litre	268,747	295,770	407,040	9,132,166	8,904,723	20,782,004	39,790,450
Soap	Kg.	3,457,836	3,848,903	2,274,518	3,479,577	2,158,522	2,350,447	17,569,803
Chlorox	Litre	1,762,863	1,774,974	2,174,610	1,528,252	1,964,008	1,823,754	11,028,461
Nail	Kg.	na	na	na	na	na	na	na
Candle	Kg.	3,871,494	3,219,866	4,246,803	3,638,944	4,755,146	4,632,443	24,364,696
Mattresses	Pcs.	43,435,124	24,432,821	22,350,261	24,060,492	30,675,421	41,563,362	186,517,481
Finished Water <sup>2</sup>	Gal.	30,680,377	31,255,427	26,263,286	19,853,043	21,064,859	26,703,458	155,820,450
Mineral Water	Litre	21,658,475	20,142,310	18,308,045	24,660,175	37,944,005	37,178,770	159,891,780

1. Water from White Plains Treatment Plant.
2. Represents Export values
3. Represents quantity sold, not quantity produced

Sources : Lands, Mines & Energy; Commerce & Industry; Forestry Development Authority (FDA);  
Liberia Produce Marketing Corporation (LPMC) and Liberia Water & Sewer Corporation (LWSC), Monrovia, Liberia

REAL SECTOR

CENTRAL BANK OF LIBERIA

2.4c: Key Output Value - 2014

Liberian dollars

Commodity	Unit	Jan-14	Feb-14	Mar-14	Apr-14	May-14	Jun-14
<b>Agriculture</b>							
Rubber <sup>3</sup>	Mt.	570,703,884	1,266,359,729	657,581,111	744,552,429	361,767,835	765,012,185
Cocoa Beans <sup>4</sup>	Mt.	139,680,799	93,243,963	55,344,842	57,405,240	37,438,322	11,196,753
Coffee <sup>4</sup>	Mt.	-	-	-	-	-	-
Round Logs <sup>3</sup>	M <sup>3</sup>	57,255	6,300,925	2,662,599	16,357,099	18,639,118	12,597,171
Sawn Timber <sup>4</sup>	Pcs.	2,546,280.18	2,675,183	4,297,521	5,039,594	4,978,698	-
Fish <sup>4</sup>	Kg.	na	na	na	na	na	na
<b>Mining<sup>4</sup></b>							
Gold	Ounces	117,054,767	118,317,890	92,779,329	243,567,254	174,448,144	152,630,917
Diamond	Carat	198,866,428	151,387,048	230,675,986	123,072,727	407,652,331	168,253,257
Iron Ore	Mt.	3,260,326,701	2,385,457,191	2,723,336,064	3,213,297,617	2,641,865,221	1,891,571,599
<b>Manufacturing<sup>4</sup></b>							
Cement	Mt.	383,285,448	274,383,087	556,760,673	490,133,380	416,302,664	364,627,704*
Spirits	Litre	1,928,550	2,015,000	2,073,000	2,209,500	2,335,150	2,189,950
Beer	Litre	106,356,765	102,926,665	117,112,110	130,709,175	128,312,595	115,638,025
Stout	Litre	97,394,630	98,002,500	115,128,300	126,643,320	127,595,970	113,389,440
Malta	Litre	9,147,930	9,037,125	10,550,930	11,710,175	10,645,110	9,420,770
Soft Drink	Litre	82,936,965	84,030,765	92,463,585	104,764,185	100,886,685	99,490,605
Oil Paint	Gal.	9,377,264	6,870,873	8,245,761	7,808,490	6,883,282	7,420,539
Water Paint	Gal.	9,502,619	5,543,809	6,177,924	5,279,576	4,768,146	5,496,443
Varnish	Gal.	840,505	670,164	926,113	639,645	1,365,036	1,132,202
Manoline Hair Grease	Kg.	571,452	436,441	775,705	42,964	457,263	52,551
Thinner	Gal.	1,240,095	657,062	478,941	737,483	610,405	703,678
Rubbing Alcohol	Litre	283,469	420,084	390,806	530,721	594,779	398,590
Soap	Kg.	2,874,789	2,902,140	3,049,700	3,964,232	2,054,753	2,114,032
Chlorox	Litre	1,915,592	1,786,779	2,755,809	2,767,076	3,071,330	1,891,955
Nail	Kg.	na	na	na	na	na	na
Candle	Kg.	5,070,359	4,681,791	2,755,766	3,552,286	2,789,632	4,602,244
Mattresses	Pcs.	37,228,351	36,084,991	44,998,631	34,734,552	37,347,855	35,855,413
Finished Water <sup>2</sup>	Gal.	23,942,080	19,841,102	32,786,953	39,073,169	40,310,020	28,063,041
Mineral Water	Gal.	30,722,940	29,455,200	27,902,800	31,970,310	29,798,065	23,958,610

1. Water from White Plains Treatment Plant.

2. Represents Export values

3. Represents quantity sold, not quantity produce

\* Estimate

Sources : Lands, Mines & Energy; Commerce & Industry; Forestry Development Authority (FDA);

Liberia Produce Marketing Corporation (LPMC) and Liberia Water & Sewer Corporation (LWSC), Monrovia, Liberia

GOVERNMENT FINANCE

CENTRAL BANK OF LIBERIA

3.1a: Government Revenue 2012 - 2013

Millions of Liberian Dollars

REVENUE SOURCES	2012					
	Jan-Feb	Mar-Apr	May-Jun	Jul-Aug	Sep-Oct	Nov-Dec
<b>A. Tax Revenue</b>	<b>4,603.28</b>	<b>5,229.90</b>	<b>5,596.82</b>	<b>4,641.78</b>	<b>4,596.41</b>	<b>4,263.25</b>
<i>International Trade Taxes</i>	<b>1,782.41</b>	<b>1,836.40</b>	<b>2,187.12</b>	<b>1,929.15</b>	<b>1,803.50</b>	<b>1,763.18</b>
<i>Taxes &amp; Duties on Imports</i>	1,702.98	1,769.00	2,136.89	1,925.29	1,798.44	1,755.10
<i>Taxes on Exports</i>	79.43	67.50	50.23	3.86	5.06	8.08
<b>Taxes on Income &amp; Profits</b>	<b>1,461.14</b>	<b>2,207.80</b>	<b>2,126.38</b>	<b>1,769.45</b>	<b>2,158.18</b>	<b>1,421.04</b>
<i>Individual Taxes on income &amp; profits</i>	683.25	701.50	694.75	1,769.45	-	-
<i>Taxes Payable by Corporate Entities</i>	776.59	1,486.30	1,430.19	-	-	-
<i>Others</i>	1.31	20.00	1.44	-	2,158.18	1,421.04
<b>Sale Taxes on Goods &amp; Services</b>	<b>771.14</b>	<b>818.80</b>	<b>1,017.44</b>	<b>674.83</b>	<b>606.89</b>	<b>1,033.25</b>
<i>Goods &amp; Service Tax</i>	222.38	252.40	304.70	434.92	306.80	312.34
<i>Excise Taxes</i>	143.47	129.90	150.91	25.14	34.13	24.22
<i>Maritime Revenue</i>	100.03	69.20	325.52	214.77	92.39	600.49
<i>Others</i>	305.25	367.20	236.30	-	173.58	96.20
<b>Property &amp; Real Estate Taxes</b>	<b>24.23</b>	<b>27.90</b>	<b>39.18</b>	<b>57.60</b>	<b>22.99</b>	<b>21.82</b>
<b>Other Tax Revenue <sup>1</sup></b>	<b>564.36</b>	<b>339.00</b>	<b>226.71</b>	<b>210.75</b>	<b>4.84</b>	<b>23.97</b>
<b>B. Non-Tax Revenue</b>	<b>2,438.24</b>	<b>304.80</b>	<b>624.40</b>	<b>339.54</b>	<b>879.15</b>	<b>3,317.10</b>
Charges & Other Administrative Fees	495.30	304.80	115.52	79.68	396.96	143.75
Grants	1,942.94	-	115.90	-	-	1,089.00
Others	-	-	392.98	259.87	482.19	-
<i>Contingent Revenue</i>	-	-	-	-	-	2,084.34
<i>Borrowing</i>	-	-	-	-	-	-
<i>Revenue Carry Forward</i>	-	-	-	-	-	-
<b>Grand Total Revenue (A + B)</b>	<b>7,041.52</b>	<b>5,534.70</b>	<b>6,221.22</b>	<b>4,981.32</b>	<b>5,475.56</b>	<b>7,580.35</b>

REVENUE SOURCES	2013					
	Jan-Feb	Mar-Apr	May-Jun	Jul-Aug	Sep-Oct	Nov-Dec
<b>A. Tax Revenue</b>	<b>4,559.38</b>	<b>4,765.09</b>	<b>5,143.71</b>	<b>4,833.33</b>	<b>4,934.67</b>	<b>4,543.91</b>
<i>International Trade Taxes</i>	<b>1,639.00</b>	<b>1,840.82</b>	<b>2,063.35</b>	<b>2,047.34</b>	<b>1,852.38</b>	<b>2,009.43</b>
<i>Taxes &amp; Duties on Imports</i>	1,632.77	1,833.25	2,057.49	2,042.96	1,846.76	2,004.06
<i>Taxes on Exports</i>	6.23	7.57	5.86	4.38	5.62	5.37
<b>Taxes on Income &amp; Profits</b>	<b>2,202.52</b>	<b>2,294.42</b>	<b>2,159.45</b>	<b>2,014.28</b>	<b>2,130.03</b>	<b>1,480.92</b>
<i>Individual Taxes on income &amp; profits</i>	1,694.81	2,292.71	1,743.75	1,469.67	1,865.42	1,364.67
<i>Taxes Payable by Corporate Entities</i>	507.70	-	415.70	519.81	241.26	116.25
<i>Others</i>	-	1.71	-	24.80	23.35	-
<b>Sale Taxes on Goods &amp; Services</b>	<b>670.38</b>	<b>521.70</b>	<b>835.59</b>	<b>737.95</b>	<b>576.42</b>	<b>1,021.89</b>
<i>Goods &amp; Service Tax</i>	22.34	311.93	332.80	411.15	351.21	311.35
<i>Excise Taxes</i>	155.43	66.24	58.43	72.22	50.36	27.47
<i>Maritime Revenue</i>	155.43	143.54	342.36	147.17	99.84	614.04
<i>Others</i>	104.36	293.35	102.00	107.40	75.02	69.03
<b>Property &amp; Real Estate Taxes</b>	<b>47.49</b>	<b>108.15</b>	<b>84.79</b>	<b>33.07</b>	<b>34.83</b>	<b>30.19</b>
<b>Other Tax Revenue <sup>1</sup></b>	<b>-</b>	<b>-</b>	<b>0.53</b>	<b>0.69</b>	<b>341.00</b>	<b>1.47</b>
<b>B. Non-Tax Revenue</b>	<b>1,996</b>	<b>4,382.10</b>	<b>2,726.07</b>	<b>-</b>	<b>1,255.52</b>	<b>3,507.95</b>
Charges & Other Administrative Fees	-	-	2,121.60	550.06	924.05	251.58
Grants	982.13	197.63	456.27	158.77	205.61	2,316.96
Others	1,014.15	4,184.47	148.21	-	125.86	939.40
<i>Contingent Revenue</i>	41.17	3,407.80	-	391.28	-	-
<i>Borrowing</i>	-	-	148.21	-	125.86	-
<i>Revenue Carry Forward</i>	-	-	-	303.34	-	-
<b>Grand Total Revenue (A + B)</b>	<b>6,555.66</b>	<b>9,147.19</b>	<b>7,869.78</b>	<b>5,383.38</b>	<b>6,190.19</b>	<b>8,051.85</b>

Source : Ministry of Finance, Monrovia, Liberia

<sup>1</sup> Tax Revenue not elsewhere classified

**GOVERNMENT FINANCE**

**CENTRAL BANK OF LIBERIA**

**3.1b: Government Revenue - 2014**

*Millions of Liberian Dollars*

REVENUE SOURCES	2014		
	Jan-Feb	Mar-Apr	May-Jun
<b>A. Tax Revenue</b>	<b>5,572.34</b>	<b>5,950.77</b>	<b>6,911.96</b>
<i>International Trade Taxes</i>	<b>8,003.77</b>	<b>2,311.90</b>	<b>2,817.7</b>
<i>Taxes &amp; Duties on Imports</i>	2,065.27	2,309.40	2,800.8
<i>Taxes on Exports</i>	5,938.50	2.50	16.9
<b>Taxes on Income &amp; Profits</b>	<b>2,187.60</b>	<b>2,527.87</b>	<b>2,105.7</b>
<i>Individual Taxes on income &amp; profits</i>	1,999.56	2,423.68	1,914.0
<i>Taxes Payable by Corporate Entities</i>	164.12	80.28	130.7
<i>Others</i>	23.93	23.91	61.1
<b>Sale Taxes on Goods &amp; Services</b>	<b>675.70</b>	<b>1,019.04</b>	<b>1,759.1</b>
<i>Goods &amp; Service Tax</i>	408.85	413.59	712.5
<i>Excise Taxes</i>	68.55	67.92	91.9
<i>Maritime Revenue</i>	99.00	205.81	134.8
<i>Others</i>	99.30	331.71	819.9
<b>Property &amp; Real Estate Taxes</b>	76.66	91.79	173.3
<b>Other Tax Revenue<sup>1</sup></b>	561.16	0.17	56.2
<b>B. Non-Tax Revenue</b>	<b>1,158.92</b>	<b>1,207.26</b>	<b>3,253.3</b>
Charges & Other Administrative Fees	1,158.92	286.16	1,187.2
Grants	-	-	2,066.0
Others	-	921.01	-
<i>Contingent Revenue</i>	-	-	-
<i>Borrowing</i>	-	0.09	-
<i>Revenue Carry Forward</i>	-	-	-
<b>Grand Total Revenue (A + B)</b>	<b>6,731.26</b>	<b>7,158.04</b>	<b>10,165.23</b>

Source : Ministry of Finance, Monrovia, Liberia

<sup>1</sup> Tax Revenue not elsewhere classified

**GOVERNMENT FINANCE**

**3.2a: Government Expenditure 2012 - 2014**

*Millions of Liberian Dollars*

Expenditure By Sectors	2012						2013					
	First Edition	Second Edition	Third Edition	Fourth Edition	Fifth Edition	Sixth Edition	First Edition	Second Edition	Third Edition	Fourth Edition	Fifth Edition	Sixth Edition
PUBLIC ADMINISTRATIVE SERVICES SECTOR				640.15	1,552.91	3,022.58	1,400.03	2,251.22	2,472.19	1,004.31	1,568.50	2,311.92
MUNICIPAL GOVERNMENT				69.77	85.27	319.56	205.38	340.02	905.10	89.48	152.20	256.23
TRANSPARENCY AND ACCOUNTABILITY				125.05	86.57	294.81	241.32	339.33	243.47	169.68	208.13	473.75
SECURITY AND THE RULE OF LAW				486.94	780.02	986.54	1,110.28	822.56	1,108.66	672.59	1,048.81	995.11
HEALTH				87.59	451.21	815.66	848.53	936.50	867.60	548.14	414.93	583.46
SOCIAL DEVELOPMENT SERVICES				31.65	66.83	114.90	115.89	146.57	141.75	41.38	54.50	114.83
EDUCATION				306.15	1,020.52	977.67	907.34	1,027.73	1,096.36	554.39	861.99	1,054.75
ENERGY AND ENVIRONMENT				46.46	159.09	590.93	145.19	182.22	189.12	66.42	89.39	227.69
AGRICULTURE				15.04	79.11	117.94	74.28	90.27	97.92	63.47	55.12	58.74
INFRASTRUCTURE AND BASIC SERVICES SECTOR				38.66	139.06	299.14	214.89	150.26	165.57	76.40	120.86	284.43
INDUSTRY AND COMMERCE SECTOR				186.26	251.42	238.59	186.55	251.76	401.38	165.51	243.89	238.91
NATIONAL CLAIMS				-	-	-	589.36	1,931.58	1,064.96	114.11	147.64	1,075.34
CENTRAL BANK OF LIBERIA				65.28	64.23	64.14	64.33	67.11	68.20	119.39	91.67	72.00
<b>TOTAL</b>	-	-	-	<b>2,099.00</b>	<b>4,736.23</b>	<b>7,842.44</b>	<b>6,103.37</b>	<b>8,537.14</b>	<b>8,822.28</b>	<b>3,685.24</b>	<b>5,057.64</b>	<b>7,747.16</b>

Expenditure By Sectors	2014		
	First Edition	Second Edition*	Third Edition**
PUBLIC ADMINISTRATIVE SERVICES SECTOR	1,979.34	1,582.93	
MUNICIPAL GOVERNMENT	650.97	533.81	
TRANSPARENCY AND ACCOUNTABILITY	244.10	246.32	
SECURITY AND THE RULE OF LAW	870.45	1,169.60	
HEALTH	698.52	879.58	
SOCIAL DEVELOPMENT SERVICES	70.23	97.75	
EDUCATION	672.97	987.54	
ENERGY AND ENVIRONMENT	97.35	123.07	
AGRICULTURE	92.16	94.06	
INFRASTRUCTURE AND BASIC SERVICES SECTOR	156.55	148.30	
INDUSTRY AND COMMERCE SECTOR	155.73	113.04	
NATIONAL CLAIMS	1,970.68	1,360.86	
CENTRAL BANK OF LIBERIA	112.81	189.73	
<b>TOTAL</b>	<b>7,771.87</b>	<b>7,526.58</b>	

\*Estimates by CBL      \*\* preliminary

**GOVERNMENT FINANCE**

**3.2b: Government Expenditure 2012 - 2014**

*Millions of Liberian Dollars*

<i>Expenditure by Codes</i>	2014		
	First Edition	Second Edition*	Third Edition**
<b>A. Current Expenditure</b>		<b>7,300.97</b>	<b>8,986.54</b>
Salaries, & Allowances		2,840.77	4,229.59
Expenditure on Goods & Services		2,773.47	3,372.89
Subsidies		-	-
Grants		1,671.61	1,364.11
Social Benefits		15.12	19.95
Others		-	-
		-	-
<b>B. Capital Expenditure</b>		<b>130.57</b>	<b>21.68</b>
Depreciation		1.98	-
Acquisition of Fixed Assets		107.93	20.21
Others		20.66	1.46
		-	-
<b>C. Interest on Debt &amp; Other Charges</b>		<b>95.05</b>	<b>63.45</b>
On Domestic & Foreign Debts (Residents)		-	-
To Non-Residents		95.05	63.45
Others		-	-
		-	-
<b>D. Other Expenditure</b>		<b>-</b>	<b>-</b>
		-	-
<b>Total Expenditures</b>	<b>-</b>	<b>7,526.58</b>	<b>9,071.67</b>

\*Estimates by CBL      \*\* preliminary

**3.3: Liberia's Overall Debt Position  
As At March 31, 2014  
(In Millions US\$)**

Creditors	2012		2013				2014	
	30-Sep	31-Dec	31-Mar	30-Jun	30-Sep	31-Dec	31-Mar	30-Jun*
Multilateral	143.8	157.1	157.2	161.6	187.3	215.5	220.0	224.5
Bilateral	134.5	133.9	133.2	122.6	122.8	122.4	122.3	122.1
Commercial Creditors	-	-	-	-	-	-	-	-
<b>Total External Debt</b>	<b>278.3</b>	<b>291.0</b>	<b>290.5</b>	<b>284.1</b>	<b>310.0</b>	<b>337.8</b>	<b>342.2</b>	<b>346.6</b>
Suppliers' Credit (Valid Claims)	1.9	1.9	1.9	1.9	1.9	1.9	1.9	1.9
Salary & Allowances	3.7	3.7	3.7	3.7	-	5.0	3.7	3.7
Financial Institutions	275.0	280.5	267.2	289.5	286.6	285.8	294.1	304.5
Pre- NTGL Salary Arrears	1.3	1.3	1.3	1.3	-	-	1.3	1.3
Others	1.2	0.8	0.9	-	12.9	-	-	0
<b>Total Domestic Debt</b>	<b>283.1</b>	<b>288.2</b>	<b>275.0</b>	<b>296.5</b>	<b>301.3</b>	<b>292.7</b>	<b>301.0</b>	<b>311.4</b>
<b>Total Public Debt</b>	<b>561.5</b>	<b>579.2</b>	<b>565.5</b>	<b>580.6</b>	<b>611.4</b>	<b>630.6</b>	<b>643.3</b>	<b>658.0</b>

Source: Ministry of Finance, Republic of Liberia

\*Estimates by CBL



## EXTERNAL TRADE

CENTRAL BANK OF LIBERIA

**4.1: Exports and Imports 2012- 2014**  
(Millions of United States Dollars)

Period	2012		2013		2014		Balance of Trade		
	Exports	Imports	Exports	Imports	Exports	Imports	2012	2013	2014
Jan	41.0	70.0	26.40	171.50	50.98	74.55	(29.00)	(145.10)	(23.57)
Feb	36.1	56.0	39.40	48.70	55.81	104.43	(19.90)	(9.30)	(48.62)
Mar	83.5	70.7	57.90	98.30	45.75	85.49	12.80	(40.40)	(39.74)
Apr	34.6	87.6	36.50	86.30	54.50	99.52	(53.00)	(49.80)	(45.02)
May	24.7	109.0	81.70	89.60	53.40	62.20	(84.30)	(7.90)	(8.80)
Jun	48.0	119.4	42.30	106.10	34.80	79.40	(71.40)	(63.80)	(44.60)
Jul	31.0	30.1	39.10	111.98			0.90	(72.88)	-
Aug	36.8	78.4	42.00	97.50			(41.60)	(55.50)	-
Sep	46.3	93.5	31.13	98.95			(47.20)	(67.82)	-
Oct	31.1	87.5	50.75	77.21			(56.40)	(26.47)	-
Nov	32.5	86.2	59.57	77.80			(53.70)	(18.23)	-
Dec	13.9	116.3	52.48	85.88			(102.40)	(33.40)	-
<b>Total</b>	<b>459.5</b>	<b>1,004.7</b>	<b>559.2</b>	<b>1,149.8</b>	<b>295.2</b>	<b>505.6</b>	<b>(545.2)</b>	<b>(590.6)</b>	

**4.2a: Commodity Composition of Exports -2012**  
(Thousands of United States Dollars)

Commodity	Jan	Feb	Mar	Apr	May	Jun	Jan-Jun Total
Rubber	18,606.1	6,705.09	35,245.03	510.22	1,355.80	37,952.19	100,374.44
Cocoa beans	1,662.1	112.00	798.43	720.30	108.00	614.07	4,014.90
Coffee	0.0	-	52.50	30.00	-	-	82.50
Round Logs	4,576.8	3,782.68	852.34	7,482.24	4,508.73	3,854.59	25,057.33
Iron Ore	5,955.6	18,878.77	24,200.68	21,508.87	10,821.38	-	81,365.28
Gold	2,031.4	1,927.81	2,054.65	2,650.62	1,388.60	2,786.57	12,839.67
Diamond	1,339.6	1,242.00	1,382.18	628.49	1,651.78	468.16	6,712.24
Other Commodities	6,744.4	3,283.11	18,927.74	1,104.38	4,909.91	2,329.96	37,299.45
<b>Total</b>	<b>40,915.9</b>	<b>35,931.46</b>	<b>83,513.55</b>	<b>34,635.12</b>	<b>24,744.20</b>	<b>48,005.54</b>	<b>267,745.81</b>

Commodity	Jul	Aug	Sep	Oct	Nov	Dec	Jul-Dec Total	Grand Total
Rubber	1,219.1	875.70	24,982.0	17,731.41	8,742.4	635.99	54,186.57	154,561.01
Cocoa beans	0.0	81.25	0.0	776.57	805.3	875.73	2,538.88	6,553.78
Coffee	-	-	-	-	-	-	-	82.50
Round Logs	8,387.9	63.93	752.2	2,194.01	8,751.9	3,150.22	23,300.19	48,357.52
Iron Ore	12,583.41	15,544.93	3,723.01	0.00	1,839.73	2,004.12	35,695.21	117,060.49
Diamond	2,611.90	1,392.31	2,382.61	2,356.15	1,924.41	2,762.19	13,429.55	26,269.22
Gold	1,448.5	689.25	3,548.4	602.09	741.3	778.79	7,808.30	14,520.54
Other Commodities	4,777.4	18,113.47	10,958.1	7,471.05	9,651.3	3,685.85	54,657.14	91,956.59
<b>Total</b>	<b>31,028.2</b>	<b>36,760.8</b>	<b>46,346.3</b>	<b>31,131.3</b>	<b>32,456.4</b>	<b>13,892.9</b>	<b>191,615.83</b>	<b>459,361.64</b>

\*Revised

Source: Ministry of Commerce &amp; Industry and Ministry of Lands, Mines and Energy, Monrovia, Liberia

## EXTERNAL TRADE

CENTRAL BANK OF LIBERIA

**4.2b: Commodity Composition of Exports - 2013***(Thousands of United States Dollars)*

Commodity	Jan	Feb	Mar	Apr	May	Jun	Jan-Jun Total
Rubber	1,118.24	2,730.72	23,826.82	2,745.07	21,668.18	12,224.44	64,313.46
Cocoa beans	274.50	40.00	-	105.00	367.50	736.50	1,523.50
Coffee	-	32.50	32.50	-	-	-	65.00
Round Logs	366.27	250.00	1,626.99	3,097.60	187.20	2,639.16	8,167.22
Iron Ore	19,610.96	25,089.98	24,780.48	26,062.57	48,325.67	14,342.68	158,212.34
Gold	2,216.43	2,277.90	2,295.68	1,532.53	1,886.93	1,268.02	11,477.49
Diamond	1,916.74	972.51	1,174.11	1,286.12	2,536.90	1,095.32	8,981.71
Other Commodities	911.5	11,219.3	4,124.7	1,691.5	6,731.7	10,011.9	34,690.55
<b>Total</b>	<b>26,414.6</b>	<b>42,612.9</b>	<b>57,861.2</b>	<b>36,520.4</b>	<b>81,704.1</b>	<b>42,318.0</b>	<b>287,431.26</b>

Commodity	Jul	Aug	Sep	Oct	Nov	Dec	Jul-Dec Total	Grand Total
Rubber	-	18,237.51	9,913.84	2,502.74	27,895.58	9,934.85	68,484.51	132,797.97
Cocoa beans	631.25	-	787.00	1,550.00	538.28	451.25	3,957.78	5,481.28
Coffee	-	9.00	-	-	-	-	9.00	74.00
Round Logs	2,214.49	2,583.58	-	530.42	-	13.34	5,341.82	13,509.04
Iron Ore	27,058.26	17,465.55	17,612.14	39,575.34	28,136.15	36,988.48	166,835.92	325,048.26
Gold	1,955.14	1,908.18	1,171.57	2,026.15	961.91	1,109.40	9,132.35	20,609.84
Diamond	1,237.75	1,319.97	<b>787.02</b>	<b>1,468.53</b>	<b>1,223.57</b>	2,156.53	8,193.36	17,175.07
Other Commodities	5,794.54	361.07	756.59	2,898.37	669.98	1,733.67	12,214.22	46,904.76
<b>Total</b>	<b>38,891.4</b>	<b>41,884.8</b>	<b>31,028.2</b>	<b>50,551.5</b>	<b>59,425.5</b>	<b>52,387.5</b>	<b>274,168.96</b>	<b>561,600.22</b>

**4.2b: Commodity Composition of Exports -2014***(Thousands of United States Dollars)*

Commodity	Jan	Feb	Mar	Apr	May	Jun	Jan-Jun Total
Rubber	6,829.1	15,561.1	7,793.1	8,593.8	4,178.9	8,574.4	51,530.36
Cocoa beans	362.5	846.0	393.8	-	375.0	-	1,977.25
Coffee	-	-	-	-	7.2	-	7.23
Round Logs	-	5,830.0	1,126.0	3,858.0	3,669.9	116.8	14,600.75
Iron Ore	39,013.1	29,312.6	32,274.7	37,096.5	30,517.1	21,201.2	189,415.15
Gold	1,400.7	1,453.9	1,099.5	2,811.9	2,015.1	1,710.7	10,491.86
Diamond	2,379.6	1,860.2	2,733.8	1,420.8	4,708.9	1,885.8	14,989.26
Other Commodities	996.3	942.7	331.3	723.3	7,968.7	1,297.7	12,260.03
<b>Total</b>	<b>50,981.3</b>	<b>55,806.6</b>	<b>45,752.2</b>	<b>54,504.3</b>	<b>53,440.8</b>	<b>34,786.8</b>	<b>295,271.88</b>

Source: Ministry of Commerce &amp; Industry and Ministry of Lands, Mines and Energy, Monrovia, Liberia

## EXTERNAL TRADE

CENTRAL BANK OF LIBERIA

**4.3: Commodity Composition of Imports in CIF values - 2012 -2014**

Thousands of United States Dollars

**4.3a: Commodity Composition of Imports in CIF values - 2012**

Commodity	Jan	Feb	Mar	Apr	May	Jun	Jan-Jun Total
<b>Food and Live Animals</b>	11,161.11	11,322.30	18,199.64	11,465.93	12,349.19	11,183.50	75,681.67
O/w Commercial Rice	8,495.91	1,328.25	5,002.55	2,428.73	8,926.38	275.37	26,457.19
O/w Non-Commercial Rice	10.84	11.15	-	-	-	-	21.99
Beverage and Tobacco	1,067.23	1,699.04	885.52	1,952.21	2,105.47	2,399.31	10,108.78
Crude Materials	454.32	365.41	763.25	192.69	605.24	724.29	3,105.20
Mineral, Fuels, Lubricants	730.14	630.24	2,480.78	2,516.43	1,063.64	7,819.45	15,240.68
Animal and Vegetable Oil	297.67	286.52	621.82	657.27	6,450.13	7,419.08	15,732.49
Chemicals and Related Products	4,431.81	2,199.62	6,855.67	3,563.24	3,965.37	7,420.47	28,436.18
Manufactured Products	7,382.42	6,967.32	8,949.99	7,090.50	19,548.87	20,606.12	70,545.22
Machinery & Transport Equipment	11,422.18	18,065.89	12,513.86	33,374.74	26,170.71	23,775.07	125,322.45
Petroleum Products	30,329.00	12,701.67	15,196.81	24,449.34	33,838.43	33,648.01	150,163.26
Miscellaneous Articles <sup>1</sup>	2,704.22	1,734.71	4,209.71	2,368.59	2,454.16	4,407.72	17,879.11
<b>Total</b>	<b>69,980.10</b>	<b>55,972.72</b>	<b>70,677.05</b>	<b>87,630.94</b>	<b>108,551.21</b>	<b>119,403.02</b>	<b>512,215.04</b>

Commodity	Jul	Aug	Sep	Oct	Nov	Dec	Jul-Dec Total	Grand Total
<b>Food and Live Animals</b>	13,330.45	9,772.43	16,221.14	24,621.95	28,970.89	26,745.82	119,662.68	195,344.35
O/w Commercial Rice	4,796.24	4,437.81	1,438.25	1,932.83	24,871.89	4,515.09	41,992.12	68,449.31
O/w Non-Commercial Rice	0.78	19.91	1.25	165.58	8.06	1.55	197.13	219.12
Beverage and Tobacco	2,228.21	3,726.59	944.98	2,002.58	776.09	1,659.42	11,337.85	21,446.63
Crude Materials	942.01	475.27	346.51	623.06	483.30	306.08	3,176.22	6,281.42
Mineral, Fuels, Lubricants	8,205.64	5,222.49	3,587.81	9,982.23	2,260.00	6,685.27	35,943.45	51,184.13
Animal and Vegetable Oil	60.30	803.99	6,713.79	1,542.71	673.05	5,801.90	15,595.74	31,328.23
Chemicals and Related Products	5,982.63	3,088.59	3,976.71	2,683.59	1,861.80	2,005.74	19,599.06	48,035.24
Manufactured Products	9,858.46	11,106.50	8,460.91	5,259.35	4,405.53	5,771.09	44,861.84	115,407.06
Machinery & Transport Equipment	23,430.80	31,563.02	39,861.89	22,692.10	29,870.51	38,119.09	185,537.40	310,859.85
Petroleum Products	25,570.97	11,124.51	12,023.48	17,226.40	13,293.58	27,530.20	106,769.15	256,932.41
Miscellaneous Articles <sup>1</sup>	1,841.40	1,528.03	1,315.22	916.34	3,652.36	1,627.67	10,881.02	28,760.13
<b>Total</b>	<b>30,133.99</b>	<b>78,411.42</b>	<b>93,452.43</b>	<b>87,550.31</b>	<b>86,247.11</b>	<b>116,252.27</b>	<b>553,364.41</b>	<b>1,065,579.45</b>

**4.3b: Commodity Composition of Imports in CIF values - 2013**

Commodity	Jan	Feb	Mar	Apr	May	Jun	Jan-Jun Total
<b>Food and Live Animals</b>	14,487.84	6,451.41	12,700.12	7,711.04	24,901.93	24,270.07	90,522.41
O/w Commercial Rice	6,907.09	358.68	6,240.19	631.04	16,420.16	16,961.01	47,518.16
O/w Non-Commercial Rice	5.38	8.52	0.69	3.81	0.51	2.51	21.42
Beverage and Tobacco	6,861.17	7,058.23	9,236.11	9,235.09	7,694.83	8,090.92	48,176.35
Crude Materials	1,620.31	1,181.38	1,343.82	1,265.97	996.14	1,277.45	7,685.07
Mineral, Fuels, Lubricants	42,767.06	14,730.91	22,261.72	29,120.83	18,442.69	24,700.85	152,024.06
O/W Petroleum Products	34,503.34	13,555.71	20,617.46	23,494.89	17,518.93	23,408.38	133,098.70
Animal and Vegetable Oil	2,067.83	2,256.03	4,844.97	1,621.03	1,060.51	6,623.92	18,474.29
Chemicals and Related Products	4,248.51	5,044.36	7,316.63	8,164.15	7,563.38	6,186.51	38,523.54
Manufactured Products	26,433.79	9,467.37	12,902.58	9,585.83	8,977.33	11,004.14	78,371.04
Machinery & Transport Equipment	26,015.25	46,633.66	25,648.90	17,612.67	17,905.50	21,661.99	155,477.98
Miscellaneous Articles <sup>1</sup>	1,869.33	2,005.09	2,082.88	2,004.99	2,022.64	2,261.56	12,246.49
<b>Total</b>	<b>126,371.09</b>	<b>94,828.44</b>	<b>98,337.73</b>	<b>86,321.60</b>	<b>89,564.95</b>	<b>106,077.42</b>	<b>601,501.23</b>

Commodity	Jul	Aug	Sep	Oct	*Nov	*Dec	Jul-Dec Total	Grand Total
<b>Food and Live Animals</b>	12,457.09	21,164.86	17,581.70	10,743.87	19,351.44	6,909.56	88,208.52	178,730.93
O/w Commercial Rice	4,869.27	10,960.10	6,525.88	4,736.40	13,318.07	640.33	41,050.04	88,568.21
O/w Non-Commercial Rice	-	0.11	-	6.40	-	-	6.51	27.92
Beverage and Tobacco	9,062.10	8,210.06	8,507.26	7,813.84	5,810.96	6,912.66	46,316.88	94,493.23
Crude Materials	1,601.64	1,999.23	1,613.75	1,504.73	1,166.99	1,120.64	9,006.98	16,692.05
Mineral, Fuels, Lubricants	32,262.31	20,996.60	26,996.84	25,233.68	9,179.37	36,460.01	151,128.81	303,152.87
O/W Petroleum Products	28,049.82	15,149.84	22,438.39	22,592.71	8,208.00	33,437.40	129,876.17	262,974.87
Animal and Vegetable Oil	1,713.38	821.06	577.02	375.14	1,329.73	7,186.18	12,002.51	30,476.80
Chemicals and Related Products	8,800.41	7,747.91	6,890.54	4,733.79	4,823.01	3,633.66	36,629.32	75,152.87
Manufactured Products	15,320.29	13,331.43	12,557.04	7,270.19	6,134.82	11,658.41	66,272.19	144,643.23
Machinery & Transport Equipment	28,741.44	19,906.37	21,859.13	16,730.03	18,955.53	14,044.94	120,237.45	275,715.42
Miscellaneous Articles <sup>1</sup>	2,025.16	3,312.60	2,368.88	2,808.86	2,402.76	1,342.23	14,260.49	26,506.98
<b>Total</b>	<b>111,983.81</b>	<b>97,490.11</b>	<b>98,952.17</b>	<b>77,214.14</b>	<b>69,154.61</b>	<b>89,268.29</b>	<b>544,063.14</b>	<b>1,145,564.37</b>

**EXTERNAL TRADE**

**CENTRAL BANK OF LIBERIA**

**4.3: Commodity Composition of Imports in CIF values**

*Thousands of United States Dollars*

**4.3c: Commodity Composition of Imports in CIF values - 2014**

<b>Commodity</b>	<b>Jan</b>	<b>Feb</b>	<b>Mar</b>	<b>Apr</b>	<b>May</b>	<b>Jun</b>	<b>Jan-Jun Total</b>
<b>Food and Live Animals</b>	5,725.13	17,344.12	7,731.42	12,853.39	11,248.10	8,128.22	63,030.38
O/w Commercial Rice	375.09	11,324.70	140.64	7,324.80	2,605.36	50.08	21,820.67
O/w Non-Commercial Rice	-	-	-	-	-	10.67	10.67
Beverage and Tobacco	8,471.81	7,055.71	8,695.62	9,538.92	6,481.97	8,070.08	48,314.10
Crude Materials	1,340.75	1,352.45	1,011.34	1,504.64	1,228.70	1,308.30	7,746.18
Mineral, Fuels, Lubricants	21,256.31	35,381.83	32,946.00	37,794.63	11,028.79	25,365.70	163,773.26
O/W Petroleum Products	18,174.57	30,523.69	27,093.81	34,252.16	8,308.25	21,153.31	139,505.79
Animal and Vegetable Oil	1,400.09	1,227.52	1,005.26	1,652.79	945.05	5,176.25	11,406.95
Chemicals and Related Products	7,381.57	7,550.29	6,440.63	6,005.71	5,607.57	5,322.22	38,307.99
Manufactured Products	7,967.20	12,172.40	7,069.50	10,366.07	8,031.19	8,429.03	54,035.40
Machinery & Transport Equipment	18,257.93	20,165.37	19,138.36	17,550.36	15,986.72	15,105.12	106,203.87
Miscellaneous Articles <sup>1</sup>	2,744.69	2,176.38	1,454.79	2,256.64	1,595.40	2,479.33	12,707.23
<b>Total</b>	<b>74,545.48</b>	<b>104,426.07</b>	<b>85,492.91</b>	<b>99,523.13</b>	<b>62,153.49</b>	<b>79,384.27</b>	<b>505,525.36</b>

*Sources:* Ministry of Commerce & Industry and Ministry of Finance, Monrovia, Liberia.

*\*Revised*

## EXTERNAL TRADE

## CENTRAL BANK OF LIBERIA

**4.4a: Volume of Imports of Petroleum Products - 2012 - 2013**  
(Volume in gals.)

2012	Premium	Diesel	Kerosene	Jet fuel	Total
Jan	4,197,923.80	5,832,689.93	-	-	10,030,614
Feb	2,873,980.92	623,194.65	-	811,920.60	4,309,096
Mar	-	4,141,208.96	-	4,225,444.40	8,366,653
Apr	2,608,858.90	4,671,053.51	-	-	7,279,912
May	6,437,519.00	3,249,521.32	-	413,767.30	10,100,808
Jun	3,678,517.80	5,827,876.17	-	1,151,932.10	10,658,326
Jul	3,930,384.20	5,907,152.78	-	371,036.00	10,208,573
Aug	2,174,860.00	7,651,975.00	-	602,744.80	10,429,580
Sep	-	3,675,066.30	-	409,094.20	4,084,161
Oct	2,606,250.40	2,567,766.42	-	-	5,174,017
Nov	2,236,609.30	1,531,583.09	-	406,215.60	4,174,407.99
Dec	2,051,716.60	6,346,696.96	-	-	8,398,413.56
<b>Total</b>	<b>32,796,620.92</b>	<b>52,025,785.09</b>	<b>-</b>	<b>8,392,155.00</b>	<b>93,214,561.01</b>

2013	Premium	Diesel	Kerosene	Jet fuel	Total
Jan	5,385,995.65	4,909,317.13	-	882,710.48	11,178,023.26
Feb	3,662,598.55	772,996.53	-	-	4,435,595.08
Mar	3,710,678.20	2,338,718.33	-	444,514.30	6,493,910.83
Apr	2,063,536.62	4,991,336.17	-	-	7,054,872.79
May	1,700,309.84	3,678,388.65	-	441,522.11	5,820,220.60
Jun	5,297,704.40	2,286,295.01	-	437,941.25	8,021,940.66
Jul	5,863,373.72	3,155,371.79	-	364,291.27	9,383,036.78
Aug	910,188.90	3,670,850.88	-	463,182.28	5,044,222.06
Sep	3,013,907.15	3,245,843.35	-	372,103.08	6,631,853.58
Oct	1,284,931.19	5,023,796.20	-	447,901.28	6,756,628.67
Nov	918,186.82	920,331.35	-	-	1,838,518.17
Dec	6,651,522.56	3,809,980.21	-	1,044,540.34	11,506,043.11
<b>Total</b>	<b>40,462,933.60</b>	<b>38,803,225.61</b>	<b>-</b>	<b>4,898,706.39</b>	<b>84,164,865.60</b>

Source: Ministry of Commerce & Industry and Central Bank of Liberia

## EXTERNAL TRADE

## CENTRAL BANK OF LIBERIA

**4.4b: Volume of Imports of Petroleum Products - 2014**  
**(Volume in gals.)**

2014	Premium	Diesel	Kerosene	Jet fuel	Total
<b>Jan</b>	1,479,959.67	3,686,563.45	-	410,326.67	5,576,849.79
<b>Feb</b>	1,771,700.23	6,791,181.38	-	1,370,235.06	9,933,116.67
Mar	4,217,230.03	1,903,850.51	-	919,670.89	7,040,751.43
Apr	1,840,927.60	8,063,264.74	-	755,984.00	10,660,176.34
May	1,391,091.59	1,194,211.58	-	-	2,585,303.17
Jun	2,934,590.99	2,329,813.18	-	2,557,644.98	7,822,049.15
<b>Total</b>	<b>13,635,500.11</b>	<b>23,968,884.84</b>	-	<b>6,013,861.60</b>	<b>43,618,246.55</b>

Source: Ministry of Commerce & Industry and Central Bank of Liberia