

	Feb.10	Mar.10	Apr.10	May.10
<b>1 Monetary</b>	<i>(Millions of US\$)</i>			
CBL Net Foreign Exchange Reserves Position (Including SDRs)	272.3	268.5	264.9	268.8
	<i>(Millions of L\$)</i>			
Liberian Dollars in Circulation	4,461.6	4,389.4	4,269.0	4,248.8
Money Supply (M1) in L\$ only	4,862.6	4,824.2	4,481.7	4,685.5
Broad money (M2) in L\$ only	6,369.0	6,340.2	6,200.4	6,378.8
Broad money (M2) in both L\$ and US\$*	24,360.4	23,402.4	25,254.1	25,313.9
	<i>(In percent)</i>			
Liberian Dollar share of Broad Money	26.1	27.1	24.6	25.2
Interest Rates				
- Lending rate	14.2	14.2	14.2	13.5
-Average Deposit rates				
-Savings	2.0	2.0	2.0	2.0
-Time	4.2	3.9	4.0	4.0
	<i>(Millions of L\$)</i>			
Commercial banks loans to private sector - US\$	132.4	132.00	128.90	131.70
Commercial banks loans to private sector - L\$	735.4	749.4	735.7	714.0
- Demand Deposits of commercial banks				
Demand deposits - US\$	182.4	176.7	198.6	195.5
Demand deposits - L\$	1,071.8	1,062.5	950.7	1,141.0
- Time & Savings Deposits of commercial banks				
Time & savings deposits - US\$	65.8	62.0	67.9	69.4
Time & savings deposits - L\$	4,769.6	4,430.6	4,855.1	4,958.7
Remittances	<i>(Millions of US\$)</i>			
Inflows	72.6	85.8	78.8	76.9
Outflows	97.5	81.9	76.4	85.6
Netflows	-24.91	3.84	2.38	-8.74
<b>2 CBL's Foreign Exchange Auction</b>	3.7	8.9	5.9	1.5
<b>3 Exchange Rate</b>	<i>L\$ per US\$</i>			
End of Period	72.50	71.50	71.50	71.50
Period Average	71.78	71.59	70.79	71.08
<b>4 Financial Soundness Indicators (FSI)</b>	<i>(In percent)</i>			
Capital adequacy ratio (CAR)**	27.3	27.5	27.8	26.2
Non-performing Loans to Total Loans	11.50	11.00	10.60	11.10
Non-performing Loans (percentage change)	14.3	-5.8	-4.5	4.9
Returns on Assets	0.14 <sup>†</sup>	0.20	0.10	0.10
Returns on Equity (ROE)	0.8 <sup>†</sup>	0.80	0.40	0.80
Liquidity Ratio***	43.90	45.00	45.10	44.30

\*US\$ converted to L\$

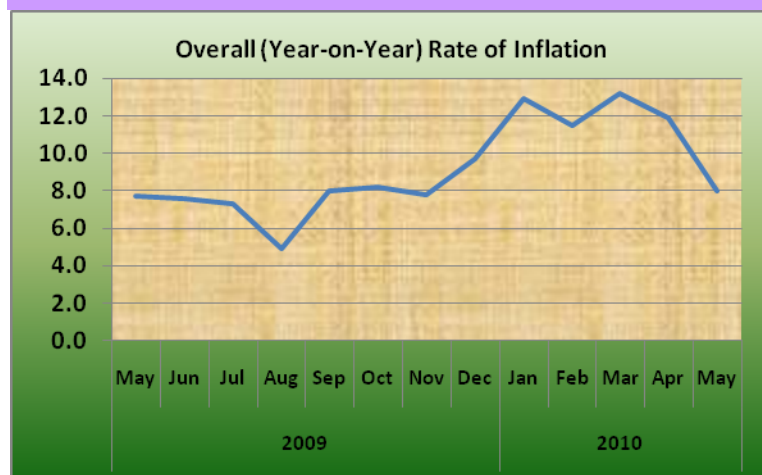
\*\*The Minimum Capital Adequacy Ratio is 10%

\*\*\*The Required Minimum Liquidity Ratio is 15%

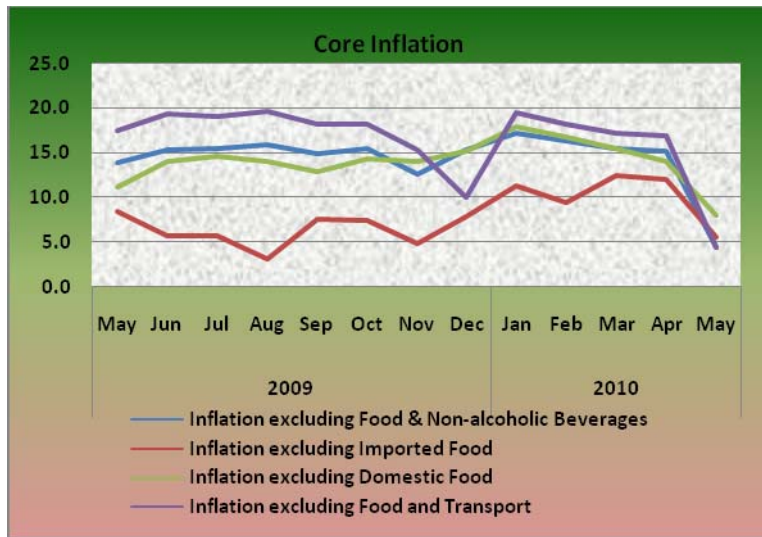
1

	Feb.10	Mar.10	Apr.10	May.10
<b>5a External Trade</b>	<i>(Millions of US\$)</i>			
Exports	13.5 <sup>†</sup>	9.0	6.5	17.5
- O/w Rubber	10.7	5.2	4.2	16.3
Imports	25.4	48.3	72.4	66.6
- O/w Rice				
Commercial	1.9	5.1	5.9	3.2
Non-commercial	0.5	0.5	0.4	1.2
- Petroleum Products	1.2	17.4	30.9	16.6
Trade Balance	-14.0	-39.3	-64.5 <sup>†</sup>	-49.1
<b>5b External Trade</b>	<i>(Metric Tons)</i>			
- Rubber	4,019.6	3,053.4	2,390.6	5,673.6
- Rice Imports O/w				
Commercial	4,054.0	11,000.0	13,914.0	7,844.0
Non-commercial	911.5	910.5	375.8	2,002.3
- Petroleum Products	1,500	24,747	41,224	18,200
	<i>(In percent)</i>			
<b>6 Overall (Year-on-year) Rate of Inflation</b>	11.5	13.2	11.9	8.0
a. Food and Non-alcoholic Beverages Inflation	6.7	11.0	8.7	12.0
- Domestic Food Inflation	-3.7	6.4	5.5	8.2
- Imported Food Inflation	17.9	15.3	11.6	15.6
b. Transport Inflation	4.3	4.0	4.1	4.6
c. Imported Fuels Inflation	32.3	32.2	33.0	35.0
<b>Core Inflation</b>	<i>(In percent)</i>			
Inflation excluding Food & Non-alcoholic Beverages	16.3	15.5	15.2	4.5
Inflation excluding Imported Food	9.4	12.5	12.0	5.6
Inflation excluding Domestic Food	16.8	15.4	14.0	8.0
Inflation excluding Food and Transport	18.2	17.3	16.9	4.4

<sup>†</sup>Revised



2



# CENTRAL BANK OF LIBERIA



## Fact Sheet on Key Economic and Financial Indicators

May, 2010



**CENTRAL BANK OF LIBERIA**

Corner of Warren and Carey Streets  
 P. O. Box 2048, Monrovia  
 Tel: 231-5-960557/5-960556  
 Fax: (231) 770-59642  
 Website: [www.cbl.org.lr](http://www.cbl.org.lr)