

	Jan.14	Feb.14	Mar.14	Apr. 14
1 Monetary	<i>(Millions of US\$)</i>			
CBL Net Foreign Exchange Reserves Position (Including SDRs) ¹	239.9	228.4	233.0	232.4
	<i>(Millions of L\$)</i>			
Liberian Dollars in Circulation	8,592.2	8,560.8	8,820.2	8,873.2
Money Supply (M1) in L\$ only	10,606.3	10,419.3	10,830.5	10,705.7
Broad money (M2) in L\$ only	14,884.6	14,853.1	15,318.6	14,343.3
Broad money (M2) in both L\$ and US\$*	51,765.4	53,396.8	54,326.9	54,080.6
	<i>(In percent)</i>			
Liberian Dollar share of Broad Money	28.8	27.8	28.2	26.5
Interest Rates				
- Lending rate	13.7	13.5	13.7	13.4
-Average Deposit rates				
-Savings	2.0	2.0	2.0	2.0
-Time	4.0	3.8	3.8	4.2
	<i>(Millions of \$)</i>			
Commercial banks loans to private sector - US\$	319.8	298.7	317.0	318.3
Commercial banks loans to private sector - L\$	1,403.7	1,343.1	1,410.6	1,516.4
- Demand Deposits of commercial banks				
Demand deposits - US\$	315.1	313.1	306.8	304.2
Demand deposits - L\$	3,118.5	3,073.4	3,124.3	2,977.4
- Time & Savings Deposits of commercial banks				
Time & savings deposits - US\$	142.5	148.3	149.1	148.0
Time & savings deposits - L\$	4,268.3	4,423.5	4,476.6	3,627.7
- Other Deposits**				
Actual US\$ component of other deposits	0.5	0.2	0.3	1.9
Liberian \$ component of savings deposits	9.9	10.3	11.4	9.9
Remittances	<i>(Millions of US\$)</i>			
Inflows	110.8	103.8	95.8	110.4
Outflows	182.2	144.0	102.7	144.3
Netflows	(71.42)	(40.21)	(7.0)	(33.9)
2 CBL's Foreign Exchange Auction	7.2	4.3	3.0	3.8
3 Exchange Rate				
End of Period	80.50	83.50	85.5	87.5
Period Average	83.57	81.38	84.38	86.62
4 Financial Soundness Indicators (FSI)	<i>(In percent)</i>			
Capital adequacy ratio (CAR)***	24.7	23.0	20.5	22.2
Non-performing Loans to Total Loans	14.6	15.6	14.5	15.3
Non-performing Loans (percentage change)	-2.5	10.0	-5.1	3.1
Returns on Assets	-0.32	-0.62	-0.35	-0.51
Returns on Equity (ROE)	-2.38	-4.63	-2.62	-4.02
Liquidity Ratio****	29.8	25.6	25.4	41.2

¹US\$ converted to L\$

²Other Deposits Include Official and Manager Checks

³The Minimum Capital Adequacy Ratio is 10%

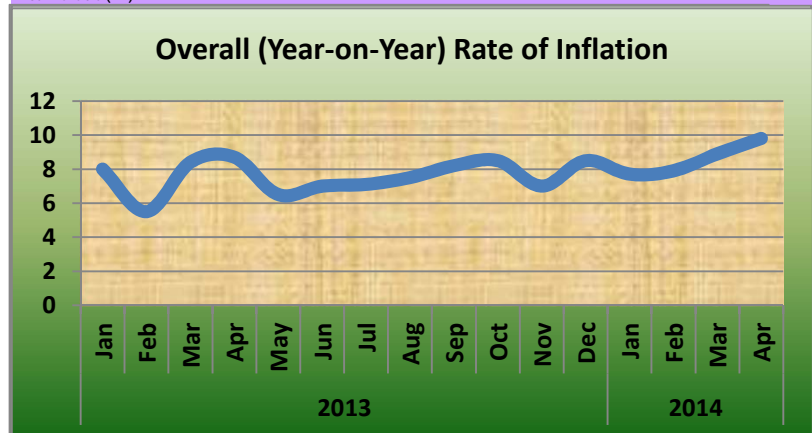
⁴The Required Minimum Liquidity Ratio is 15%

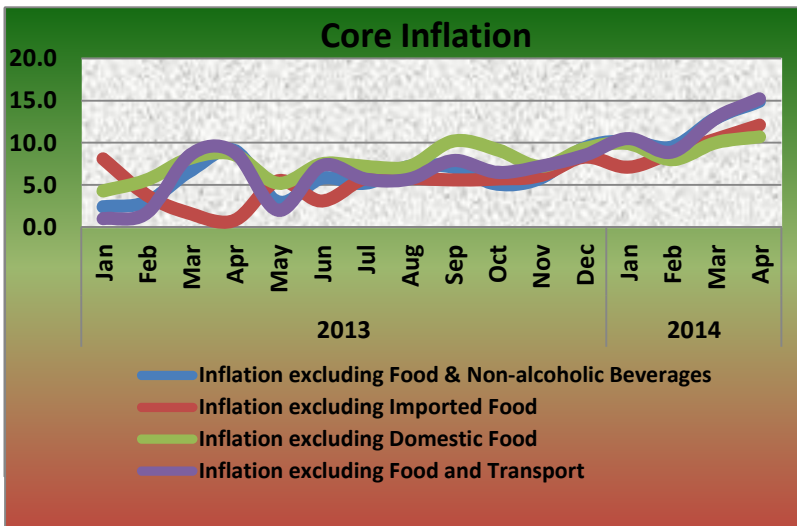
⁵Reserves exclude ECF borrowing from the IMF

	Jan. 14	Feb. 14	Mar. 14	Apr. 14
5a External Trade (Value)	<i>(Millions of US\$)</i>			
Exports	51.0	55.8	45.8	54.5
- O/w Iron Ore	39.0	29.3	32.3	37.1
- O/w Rubber	6.8	15.6	7.8	8.6
Imports	74.5	104.4	85.5	99.5
- O/w Rice				
Commercial	0.3	11.3	0.14	7.3
Non-commercial	0.0	0.0	0.0	0.0
- Petroleum Products	18.2	30.5	27.1	34.3
Trade Balance	-23.5	-48.6	-39.7	-45.0
5b External Trade (Volume)	<i>(Metric Tons)</i>			
- Rubber	2,873.2	7,966.7 [†]	3,744.6	4,221.79
-Iron Ore	541,430.0	409,000.0	490,000.0	629,000.00
- Rice Imports O/w				
Commercial	527.8	25,182.6	132.2	15,014.3
Non-commercial	0.0	0.0	0.0	0.0
- Petroleum Products	17,117.2	30,612.8	20,085	33,283.4
	<i>(In percent)</i>			
6 Overall (Year-on-year) Rate of Inflation	7.7	7.9	8.9	9.8
a. Food and Non-alcoholic Beverages Inflation	5.6	6.4	5.5	5.4
- Domestic Food Inflation	2.1	7.6	5.9	7.2
- Imported Food Inflation	9.4	5.3	5.1	3.8
b. Transport Inflation	8.5	12.6	12.6	13.0
c. Imported Fuels Inflation	6.3	2.9	3.3	4.6
Core Inflation				
Inflation excluding Food & Non-alcoholic Beverages	10.2	9.5	12.9	14.9
Inflation excluding Imported Food	7.1	8.8	10.4	12.1
Inflation excluding Domestic Food	9.9	8.0	10.0	10.7
Inflation excluding Food and Transport	10.5	8.9	12.9	15.2

[†]Revised

[‡]Not Available (NA)





CENTRAL BANK OF LIBERIA

CENTRAL BANK OF LIBERIA



Fact Sheet on Key Economic and Financial Indicators

April, 2014

Corner of Warren and Carey Streets
 P. O. Box 2048, Monrovia
 Tel: 231-5-960557/5-960556
 Fax: (231) 770-59642
 Website: www.cbl.org.lr