

	Feb.12	Mar.12	Apr.12	May.12
<b>1 Monetary</b>	<i>(Millions of US\$)</i>			
CBL Net Foreign Exchange Reserves Position (Including SDRs)	329.5	335.9	337.7	339.7
	<i>(Millions of L\$)</i>			
Liberian Dollars in Circulation	7,263.5	7,339.6	7,354.7	7,296.7
Money Supply (M1) in L\$ only	7,860.2	7,725.9	7,493.5	7,611.6
Broad money (M2) in L\$ only	11,268.2	11,164.8	10,558.3	10,828.1
Broad money (M2) in both L\$ and US\$*	40,350.9	37,624.3	40,043.5	42,562.5
	<i>(Millions of L\$)</i>			
Liberian Dollar share of Broad Money	27.9	29.7	26.4	25.4
<b>Interest Rates</b>				
- Lending rate	13.4	13.3	13.9	12.9
-Average Deposit rates				
-Savings	2.0	2.0	2.0	2.0
-Time	3.0	2.0	3.7	3.7
	<i>(Millions of L\$)</i>			
Commercial banks loans to private sector - US\$	228.80	216.80	234.20	239.00
Commercial banks loans to private sector - L\$	649.0	667.1	696.5	683.1
- Demand Deposits of commercial banks				
Demand deposits - US\$	276.8	241.1	276.2	297.8
Demand deposits - L\$	1,768.5	1,631.6	1,584.7	1,590.5
- Time & Savings Deposits of commercial banks				
Time & savings deposits - US\$	115.1	112.3	118.6	115.5
Time & savings deposits - L\$	3,401.9	3,432.4	3,058.6	3,059.6
- Other Deposits**				
Actual US\$ component of other deposits	3.8	4.1	3.6	3.6
Liberian \$ component of savings deposits	6.1	6.5	6.2	6.2
<b>Remittances</b>	<i>(Millions of US\$)</i>			
Inflows	123.2	105.7	90.0	135.0
Outflows	95.3	96.4	107.6	142.0
Netflows	27.92	9.32	-17.58	-6.00
<b>2 CBL's Foreign Exchange Auction</b>	7.0	2.0	3.8	9.4
<b>3 Exchange Rate</b>	<i>L\$ per US\$</i>			
End of Period	73.50	74.00	74.00	76.00
Period Average	73.50	73.61	74.00	74.89
<b>4 Financial Soundness Indicators (FSI)</b>	<i>(In percent)</i>			
Capital adequacy ratio (CAR)***	25.40	24.90	22.10	22.70
Non-performing Loans to Total Loans	23.8	23.6	24.4	24.4
Non-performing Loans (percentage change)	11.80	2.20	3.45 <sup>†</sup>	4.77
Returns on Assets	-0.16	0.14 <sup>†</sup>	-1.07	-0.69
Returns on Equity (ROE)	1.14 <sup>†</sup>	1.00	-7.9	-5.12
Liquidity Ratio****	45.9 <sup>†</sup>	45.60	43.40	44.70

\*US\$ converted to L\$

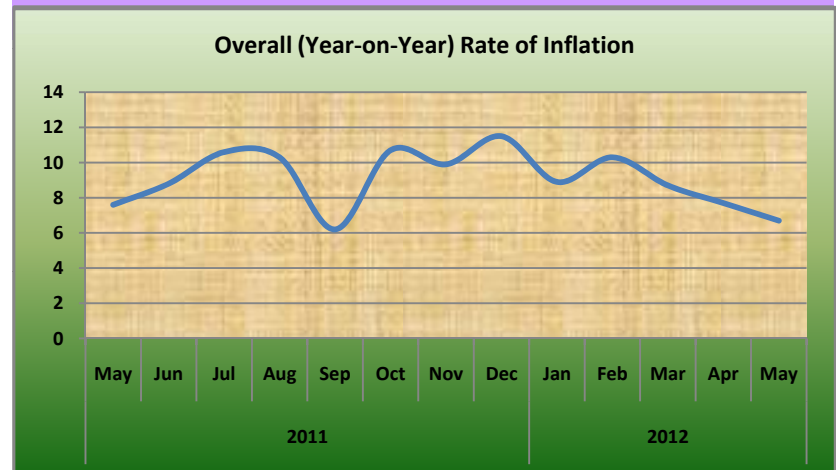
\*\*Other Deposits Include Official and Manager Checks

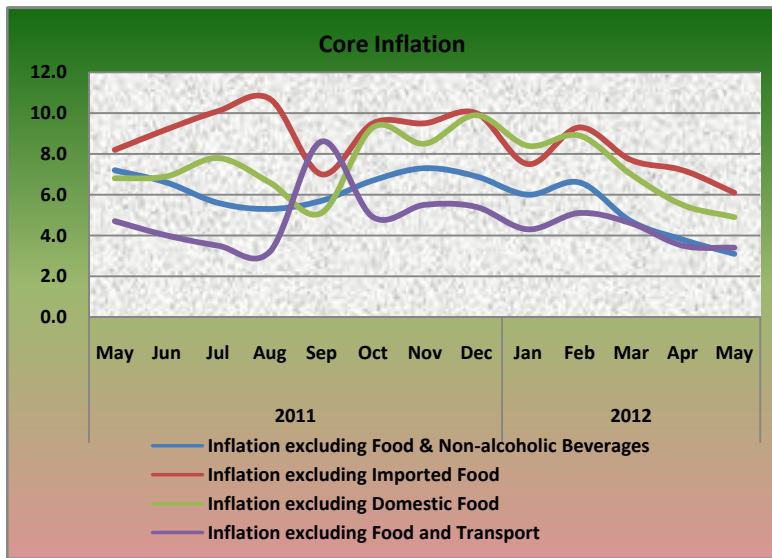
\*\*\*The Minimum Capital Adequacy Ratio is 10%

\*\*\*\*The Required Minimum Liquidity Ratio is 15%

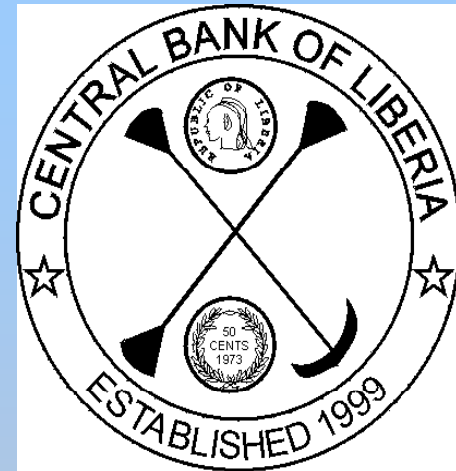
	Feb.12	Mar.12	Apr.12	May.12
<b>5a External Trade</b>	<i>(Millions of US\$)</i>			
Exports	36.0 <sup>†</sup>	83.5	31.4	21.7
- O/w Rubber	6.7	35.2	0.5	1.4
Imports	56.0	70.7 <sup>†</sup>	87.6	108.6
- O/w Rice				
Commercial	1.3	5.2 <sup>†</sup>	2.4	9.0
Non-commercial	0.0	0.0	0.0	0.0
- Petroleum Products	12.7	15.2 <sup>†</sup>	24.5	33.8
Trade Balance	-20.0 <sup>†</sup>	12.8 <sup>†</sup>	-56.2	-86.9
<b>5b External Trade</b>	<i>(Metric Tons)</i>			
- Rubber	3,564.1	12,125 <sup>†</sup>	343.5	947.2
- Rice Imports O/w				
Commercial	2,372.0	7,134.8 <sup>†</sup>	3,568.0	16,030.9
Non-commercial	17.6	0.0 <sup>†</sup>	0.0	0.0
- Petroleum Products	11,992	24,909 <sup>†</sup>	22,266	29,102
	<i>(In percent)</i>			
<b>6 Overall (Year-on-year) Rate of Inflation</b>	10.3	8.7	7.7	6.7
a. Food and Non-alcoholic Beverages Inflation	14.0	12.8	11.7	10.4
- Domestic Food Inflation	14.6	14.1	14.7	12.3
- Imported Food Inflation	13.3 <sup>†</sup>	11.5	9.0	8.5
b. Transport Inflation	16.5	5.1	5.1	1.4
c. Imported Fuels Inflation	18.0	17.8	11.7	9.6
<b>Core Inflation</b>	<i>(In percent)</i>			
Inflation excluding Food & Non-alcoholic Beverages	6.6	4.7	3.8	3.1
Inflation excluding Imported Food	9.3	7.7	7.2	6.1
Inflation excluding Domestic Food	8.9	7.0	5.5	4.9
Inflation excluding Food and Transport	5.1	4.6	3.5	3.4

<sup>†</sup>Revised





# CENTRAL BANK OF LIBERIA



## Fact Sheet on Key Economic and Financial Indicators

May, 2012



**CENTRAL BANK OF LIBERIA**

Corner of Warren and Carey Streets  
 P. O. Box 2048, Monrovia  
 Tel: 231-5-960557/5-960556  
 Fax: (231) 770-59642  
 Website: [www.cbl.org.lr](http://www.cbl.org.lr)