

	Jul.11	Aug.11	Sep.11	Oct.11
1 Monetary	<i>(Millions of US\$)</i>			
CBL Net Foreign Exchange Reserves Position (Including SDRs)	324*	325.1	320.6	323.3
	<i>(Millions of L\$)</i>			
Liberian Dollars in Circulation	5,660.9	5,696.2	5,710.5	5,958.0
Money Supply (M1) in L\$ only	6,459.0	6,579.1	6,683.7	6,980.7
Broad money (M2) in L\$ only	8,731.9	8,979.4	9,693.9	10,174.4
Broad money (M2) in both L\$ and US\$*	35,151.8	35,471.4	38,772.3	39,843.4
Liberian Dollar share of Broad Money	24.8	25.3	25.0	25.5
Interest Rates				
- Lending rate	13.5	13.8	13.8	14.0
-Average Deposit rates				
-Savings	2.0	2.0	2.0	2.1
-Time	3.1	3.2	2.7	3.3
	<i>(Millions of L\$)</i>			
Commercial banks loans to private sector - US\$	193.30	201.80	206.00	210.20
Commercial banks loans to private sector - L\$	693.5	672.8	659.9	662.5
- Demand Deposits of commercial banks				
Demand deposits - US\$	255.4	263.5	277.8	295.0
Demand deposits - L\$	1,387.2	1,552.6	1,559.4	1,517.2
- Time & Savings Deposits of commercial banks				
Time & savings deposits - US\$	108.0	107.7	111.4	115.2
Time & savings deposits - L\$	2,266.7	2,394.1	3,003.8	3,187.6
- Other Deposits**				
Actual US\$ component of other deposits	1.0	-5.8	14.7	1.8
Liberian \$ component of savings deposits	6.2	6.2	6.4	6.1
Remittances	<i>(Millions of US\$)</i>			
Inflows	73.2	105.0	107.1	146.4
Outflows	101.4	123.6	117.3	110.4
Netflows	-28.17	-18.64	-10.19	36.04
2 CBL's Foreign Exchange Auction	3.5	2.7	2.0	2.5
3 Exchange Rate	<i>L\$ per US\$</i>			
End of Period	72.50	72.50	72.00	72.00
Period Average	73.60	72.51	72.08	72.29
4 Financial Soundness Indicators (FSI)	<i>(In percent)</i>			
Capital adequacy ratio (CAR)***	25.80	24.50	22.51	21.00
Non-performing Loans to Total Loans	19.2	20.0	19.1	18.9
Non-performing Loans (percentage change)	3.50	8.60	-2.9	1.40
Returns on Assets	-0.08	-0.2	-0.32	-0.3
Returns on Equity (ROE)	-0.50*	-3.2	-2.09	-1.88
Liquidity Ratio****	48.80	48.00	45.64	40.60

*US\$ converted to L\$

**Other Deposits Include Official and Manager Checks

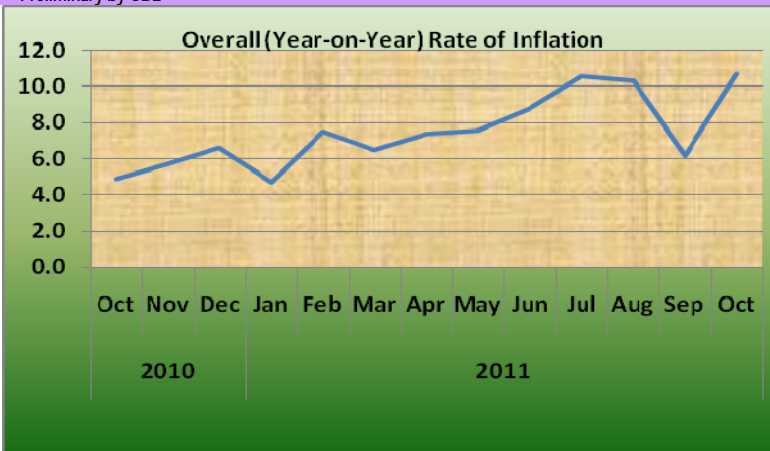
***The Minimum Capital Adequacy Ratio is 10%

****The Required Minimum Liquidity Ratio is 15%

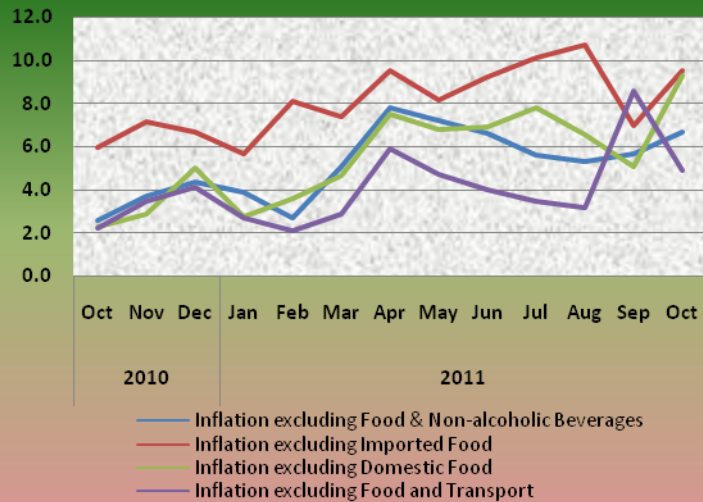
	Jul.11	Aug.11	Sep.11	Oct.11
5a External Trade	<i>(Millions of US\$)</i>			
Exports	36.2	43.1	10.8*	46.3
- O/w Rubber	30.4	32.6	2.2*	36.1
Imports	110.9	97.6	72.1*	55.5
- O/w Rice				
Commercial	8.0	12.2	7.3	4.3
Non-commercial	0.0	0.0	0.0	0.4
- Petroleum Products	23.6	16.0	12.9	17.0
Trade Balance	-74.7	-54.5	-61.3*	-9.2
5b External Trade	<i>(Metric Tons)</i>			
- Rubber	8,566.9	9,695.5	3123.3*	11,163.1
- Rice Imports O/w				
Commercial	15,427.0	23,559.5	14,106.3	9,669.9
Non-commercial	0.0	5.4	0.0	498.6
- Petroleum Products	21,893	15,738	12,630	24,274
	<i>(In percent)</i>			
6 Overall (Year-on-year) Rate of Inflation	10.6	10.3	6.2	10.7
a. Food and Non-alcoholic Beverages Inflation	15.7	15.2	6.7	14.6
- Domestic Food Inflation	19.6	21.8	9.6	14.8
- Imported Food Inflation	12.1	9.1	4.0	14.4
b. Transport Inflation	20.1	20.0	19.4	19.4
c. Imported Fuels Inflation	34.1	33.9	31.5	31.1
Core Inflation	<i>(In percent)</i>			
Inflation excluding Food & Non-alcoholic Beverages	5.6	5.3	5.7	6.7
Inflation excluding Imported Food	10.1	10.7	7.0	9.5
Inflation excluding Domestic Food	7.8	6.6	5.1	9.3
Inflation excluding Food and Transport	3.5	3.2	8.6	4.9

*Revised

*Preliminary by CBL



Core Inflation



CENTRAL BANK OF LIBERIA

CENTRAL BANK OF LIBERIA



Fact Sheet on Key Economic and Financial Indicators October, 2011

Corner of Warren and Carey Streets
 P. O. Box 2048, Monrovia
 Tel: 231-5-960557/5-960556
 Fax: (231) 770-59642
 Website: www.cbl.org.lr