

	Sep.12	Oct.12	Nov.12	Dec.12
1 Monetary	<i>(Millions of US\$)</i>			
CBL Net Foreign Exchange Reserves Position (Including SDRs)	325.8	324.4 [†]	343.3	346.0
	<i>(Millions of L\$)</i>			
Liberian Dollars in Circulation	6,939.8	7,104.7	7,556.5	8,614.2
Money Supply (M1) in L\$ only	7,294.3	7,482.8	8,227.6	9,174.6
Broad money (M2) in L\$ only	10,816.7 [†]	11,164.3 [†]	11,967.6	12,440.7
Broad money (M2) in both L\$ and US\$*	42,516.4	41,406.3	42,257.9	44,682.3
	<i>(In percent)</i>			
Liberian Dollar share of Broad Money	25.4	27.0	28.3	27.8
Interest Rates				
- Lending rate	13.6	13.7	13.8	13.2
-Average Deposit rates				
-Savings	2.1	2.0	2.0	2.0
-Time	3.0	3.0 [†]	3.0	3.0
	<i>(Millions of L\$)</i>			
Commercial banks loans to private sector - US\$	250.1 [†]	258.4 [†]	264.60	258.40
Commercial banks loans to private sector - L\$	738.3 [†]	782.1 [†]	747.9	788.5
- Demand Deposits of commercial banks				
Demand deposits - US\$	293.4 [†]	275.4	279.4	289.1
Demand deposits - L\$	1,930.2	1,849.3	1,805.4	1,883.3
- Time & Savings Deposits of commercial banks				
Time & savings deposits - US\$	138.9	141.4	139.2	138.7
Time & savings deposits - L\$	3,507.0	3,667.0	3,724.7	3,214.5
- Other Deposits**				
Actual US\$ component of other deposits	1.9	0.4	-0.9	16.9
Liberian \$ component of savings deposits	15.4	14.6	15.3	51.6
Remittances	<i>(Millions of US\$)</i>			
Inflows	120.7	102.0 [†]	123.9	100.8
Outflows	105.7	87.9	83.9	85.1
Netflows	14.97 [†]	14.07 [†]	40.01	15.76
2 CBL's Foreign Exchange Auction	4.8	4.1	5.2	5.7
3 Exchange Rate	<i>L\$ per US\$</i>			
End of Period	73.00	72.50	72.50	72.50
Period Average	73.32	72.06	72.25	72.50
4 Financial Soundness Indicators (FSI)	<i>(In percent)</i>			
Capital adequacy ratio (CAR)***	21.2 [†]	20.7 [†]	23.00	22.40
Non-performing Loans to Total Loans	22.1	22.2	23.0 [†]	24.9
Non-performing Loans (percentage change)	-5.5 [†]	2.4 [†]	3.4 [†]	8.70
Returns on Assets	0.14	0.12	0.18	-0.06
Returns on Equity (ROE)	1.05	0.90	1.33 [†]	-0.44
Liquidity Ratio****	46.70	43.60	44.90	45.90

*US\$ converted to L\$

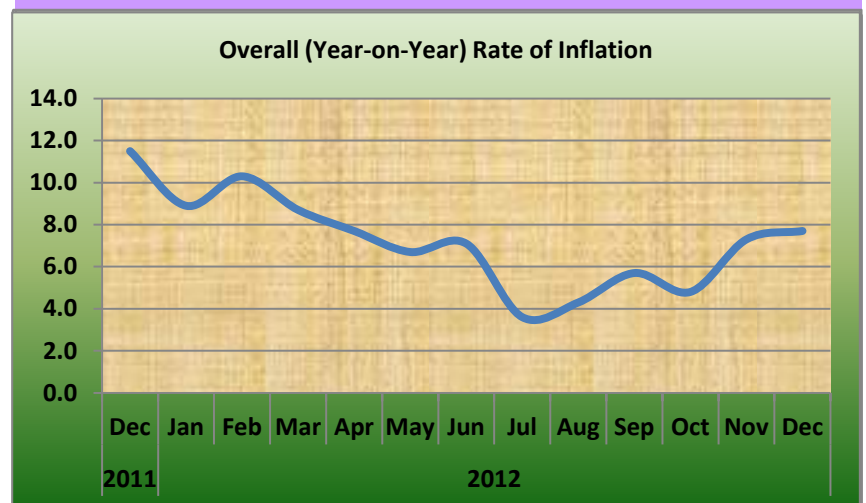
**Other Deposits Include Official and Manager Checks

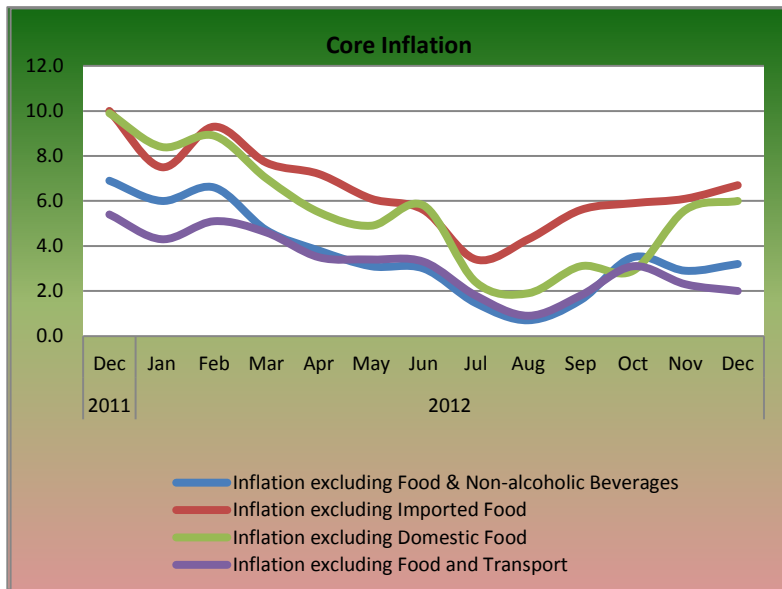
***The Minimum Capital Adequacy Ratio is 10%

****The Required Minimum Liquidity Ratio is 15%

	Sep.12	Oct.12	Nov.12	Dec.12
5a External Trade (Value)	<i>(Millions of US\$)</i>			
Exports	44.2 [†]	31.1	32.5	36.1
- O/w Rubber	25.0	17.7	8.7	22.8
Imports	88.8	87.6	86.3 [†]	116.3
- O/w Rice				
Commercial	1.4	1.9	25.0 [†]	4.5
Non-commercial	0.0	0.0	0.0	0.0
- Petroleum Products	13.4 [†]	17.2	13.3 [†]	28.0
Trade Balance	-44.6 [†]	-56.5	-53.8 [†]	-80.2
5b External Trade (Volume)	<i>(Metric Tons)</i>			
- Rubber	8,572.9	6,861.0	4,213.4	7,837.0
- Rice Imports O/w				
Commercial	3,097.4	4,461.5	42,678.0 [†]	10,131.1
Non-commercial	0.0	0.0	0.0	0.0
- Petroleum Products	13,076.6	15,408.0	12,132.0 [†]	26,219.0
	<i>(In percent)</i>			
6 Overall (Year-on-year) Rate of Inflation	5.7	4.8	7.3	7.7
a. Food and Non-alcoholic Beverages Inflation	9.6	6.1	11.5	12.2
- Domestic Food Inflation	13.2	10.2	12.0	16.8
- Imported Food Inflation	5.9	1.9	11.0	7.6
b. Transport Inflation	0.4	6.2	6.1	10.5
c. Imported Fuels Inflation	5.9	7.0	6.7	5.0
Core Inflation				
Inflation excluding Food & Non-alcoholic Beverages	1.6	3.5	2.9	3.2
Inflation excluding Imported Food	5.6	5.9	6.1	6.7
Inflation excluding Domestic Food	3.1	2.9	5.6	6.0
Inflation excluding Food and Transport	1.8	3.1	2.3	2.0

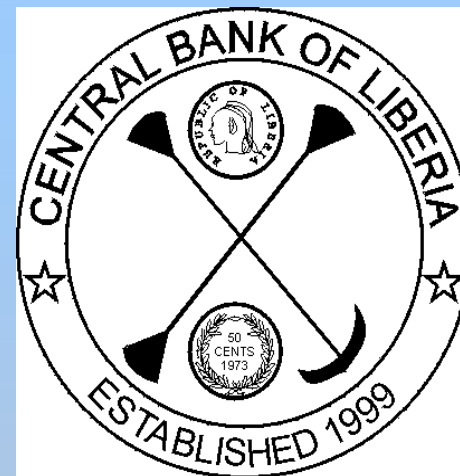
[†]Revised





CENTRAL BANK OF LIBERIA

CENTRAL BANK OF LIBERIA



Fact Sheet on Key Economic and Financial Indicators December, 2012

Corner of Warren and Carey Streets
 P. O. Box 2048, Monrovia
 Tel: 231-5-960557/5-960556
 Fax: (231) 770-59642
 Website: www.cbl.org.lr