

	Oct.13	Nov.13	Dec.13	Jan.14
1 Monetary	<i>(Millions of US\$)</i>			
CBL Net Foreign Exchange Reserves Position (Including SDRs) [†]	216.4 [†]	215.5	242.9	246.5
	<i>(Millions of L\$)</i>			
Liberian Dollars in Circulation	8,562.2	8,600.6	9,468.0	8,592.2
Money Supply (M1) in L\$ only	9,507.8	9,809.7	11,325.0	10,606.3
Broad money (M2) in L\$ only	14,170.9	14,497.7	15,446.7	14,884.6
Broad money (M2) in both L\$ and US\$*	49,189.6	52,807.8	54,956.4	51,765.4
	<i>(In percent)</i>			
Liberian Dollar share of Broad Money	28.8	27.5	28.1	28.8
Interest Rates				
- Lending rate	13.5	13.7	13.7	13.7
- Average Deposit rates				
- Savings	2.0	2.0	2.0	2.0
- Time	3.0	3.0	2.5	3.0
	<i>(Millions of \$)</i>			
Commercial banks loans to private sector - US\$	309.90	317.00	310.80	319.80
Commercial banks loans to private sector - L\$	1,276.6	1,332.6	1,338.3	1,403.7
- Demand Deposits of commercial banks	298.8	328.7	331.4	315.1
Demand deposits - US\$	24,204.8	26,791.4	27,341.5	25,367.5
Demand deposits - L\$	2,734.5	2,637.4	3,053.3	3,118.5
- Time & Savings Deposits of commercial banks				
Time & savings deposits - US\$	10,756.3	11,641.7	12,140.7	11,474.3
Time & savings deposits - L\$	4,654.9	4,679.8	4,111.6	4,268.3
- Other Deposits**				
Actual US\$ component of other deposits	57.7	57.0	27.5	39.1
Liberian \$ component of savings deposits	8.1	8.2	10.1	9.9
Remittances	<i>(Millions of US\$)</i>			
Inflows	102.6	93.0	146.0	110.8
Outflows	116.9	88.5	127.5	182.2
Netflows	(14.30)	4.51	18.50	(71.42)
2 CBL's Foreign Exchange Auction	3.0	1.8	0.9	7.2
3 Exchange Rate				
End of Period	81.00	81.50	82.50	80.50
Period Average	80.57	80.98	81.88	83.57
4 Financial Soundness Indicators (FSI)	<i>(In percent)</i>			
Capital adequacy ratio (CAR)***	23.1 [†]	22.9 [†]	24.9	24.7
Non-performing Loans to Total Loans	16.7	14.4	14.8	14.6
Non-performing Loans (percentage change)	-8.0	11.6	3.8	2.5
Returns on Assets	-0.73	-0.71	-0.50	-0.32
Returns on Equity (ROE)	-5.29 [†]	-5.42 [†]	-3.81	-2.38
Liquidity Ratio****	28.9	33.6	36.1	29.8

*US\$ converted to L\$

**Other Deposits Include Official and Manager Checks

***The Minimum Capital Adequacy Ratio is 10%

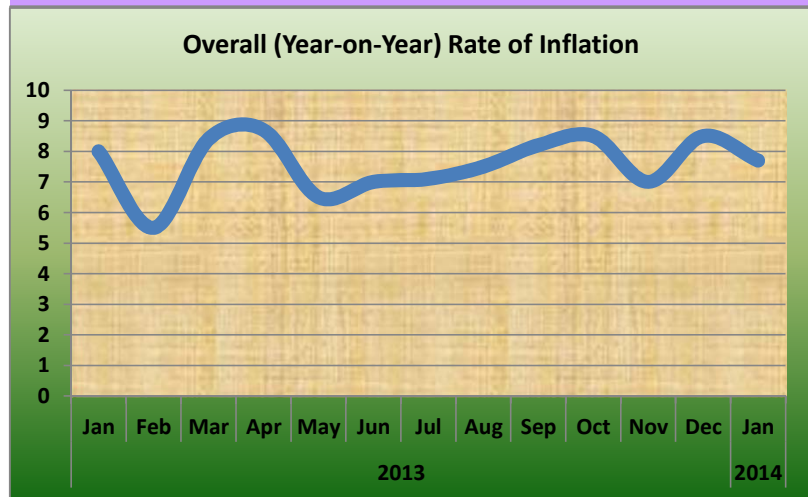
****The Required Minimum Liquidity Ratio is 15%

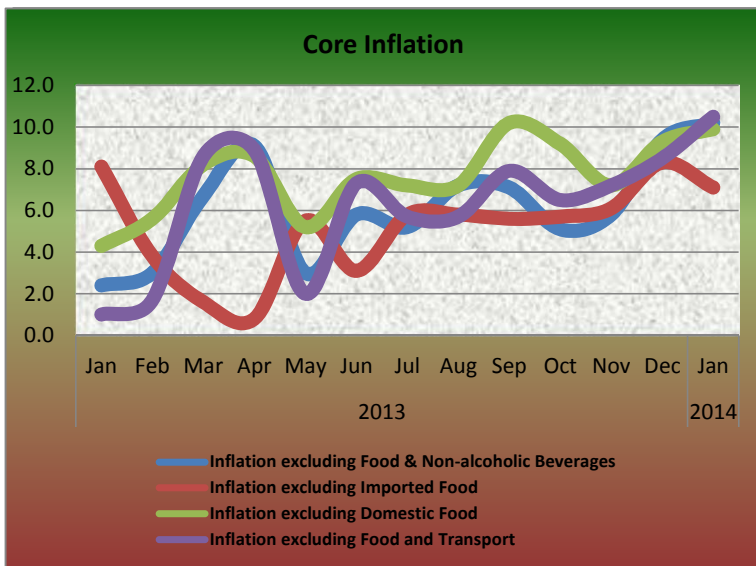
[†]Reserves exclude ECF borrowing from the IMF

	Oct.13	Nov.13	Dec.13	Jan. 14
5a External Trade (Value)	<i>(Millions of US\$)</i>			
Exports	50.8	59.6	48.8 [†]	51.0
- O/w Iron Ore	39.6	28.1	26.2 [†]	39.0
- O/w Rubber	2.5	27.9	9.9	6.8
Imports	77.2	69.2 [†]	89.3 [†]	74.5
- O/w Rice				
Commercial	4.7	13.3 [†]	0.6	0.3
Non-commercial	0.0	0.0	0.0	0.0
- Petroleum Products	22.6	8.2 [†]	33.4	18.2
Trade Balance	-26.4	-9.6 [†]	-40.5 [†]	-23.5
5b External Trade (Volume)	<i>(Metric Tons)</i>			
- Rubber	1,108.9	11,398.4	5,443.2	2,873.2
- Iron Ore	555,650.0 [†]	407,670.0	372,663.4 [†]	541,430.0
- Rice Imports O/w				
Commercial	8,548.0	21,445.1 [†]	933.1 [†]	527.8
Non-commercial	0.0	0.0	0.0	0.0
- Petroleum Products	21,047.5	5,479.4 [†]	33,210.7	17,117.2
	<i>(In percent)</i>			
6 Overall (Year-on-year) Rate of Inflation	8.5	7.0	8.5	7.7
a. Food and Non-alcoholic Beverages Inflation	11.6	8.1	7.7	5.6
- Domestic Food Inflation	6.7	6.5	6.3	2.1
- Imported Food Inflation	17.0	9.8	9.2	9.4
b. Transport Inflation	-2.9	-2.1	14.4	8.5
c. Imported Fuels Inflation	2.1	4.3	6.1	6.3
Core Inflation				
Inflation excluding Food & Non-alcoholic Beverages	5.1	5.8	9.4	10.2
Inflation excluding Imported Food	5.7	6.1	8.3	7.1
Inflation excluding Domestic Food	9.2	7.2	9.3	9.9
Inflation excluding Food and Transport	6.5	7.2	8.5	10.5

[†]Revised

[‡]Not Available (NA)





CENTRAL BANK OF LIBERIA

CENTRAL BANK OF LIBERIA



Fact Sheet on Key Economic and Financial Indicators

January, 2014

Corner of Warren and Carey Streets
 P. O. Box 2048, Monrovia
 Tel: 231-5-960557/5-960556
 Fax: (231) 770-59642
 Website: www.cbl.org.lr