

	Aug.10	Sep.10	Oct.10	Nov.10
1 Monetary	<i>(Millions of US\$)</i>			
CBL Net Foreign Exchange Reserves Position (Including SDRs)	278.2	281.4	283.9	289.3
	<i>(Millions of L\$)</i>			
Liberian Dollars in Circulation	4,539.9	4,583.7	4,674.9	4,910.3
Money Supply (M1) in L\$ only	4,710.2	5,004.2	5,060.4	5,408.4
Broad money (M2) in L\$ only	6,620.7	6,992.9	7,160.7	7,555.6
Broad money (M2) in both L\$ and US\$*	25,839.8	27,829.0	27,838.3	28,652.2
	<i>(In percent)</i>			
Liberian Dollar share of Broad Money	25.6	25.1	25.7	26.4
Interest Rates				
- Lending rate	14.2	14.4	14.3	14.2
-Average Deposit rates				
-Savings	2.4	2.0	2.0	2.0
-Time	3.0	2.9	2.5	2.5
	<i>(Millions of L\$)</i>			
Commercial banks loans to private sector - US\$	138.80	155.50	164.60	164.40
Commercial banks loans to private sector - L\$	644.4	682.5	716.9	677.6
- Demand Deposits of commercial banks				
Demand deposits - US\$	197.0	212.7	207.5	207.1
Demand deposits - L\$	1,038.6	1,208.2	1,046.9	1,071.5
- Time & Savings Deposits of commercial banks				
Time & savings deposits - US\$	67.4	74.3	79.8	84.7
Time & savings deposits - L\$	1,904.1	1,982.3	2,094.3	2,141.1
- Other Deposits**				
Actual US\$ component of other deposits	0.7	0.4	0.9	11.7
Liberian \$ component of savings deposits	6.3	6.4	6.0	6.0
Remittances	<i>(Millions of US\$)</i>			
Inflows	86.1	78.7	85.8	71.8
Outflows	88.5	90.1	75.2	80.4
Netflows	-2.3	-11.4	10.5	-8.63
2 CBL's Foreign Exchange Auction	2.2	2.6	2.8	2.0
3 Exchange Rate	<i>L\$ per US\$</i>			
End of Period	72.50	72.50	71.75	69.50
Period Average	72.50	71.85	72.02	69.83
4 Financial Soundness Indicators (FSI)	<i>(In percent)</i>			
Capital adequacy ratio (CAR)***	23.5	23.9	24.0	23.80
Non-performing Loans to Total Loans	11.00	10.20	10.3†	11.5
Non-performing Loans (percentage change)	-1.3	1.3	3.2	10.90
Returns on Assets	0.10	-0.2†	-0.2	-0.2
Returns on Equity (ROE)	0.30	-1.1†	-1.1	-1.4
Liquidity Ratio****	40.60	42.00	39.40	40.00

*US\$ converted to L\$

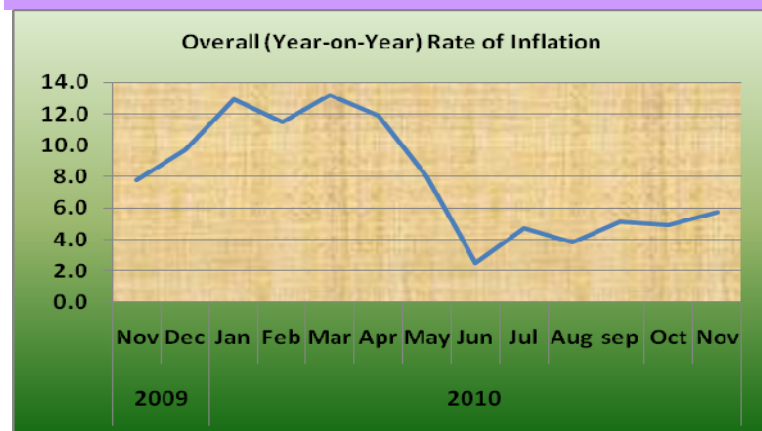
**Other Deposits Include Official and Manager Checks

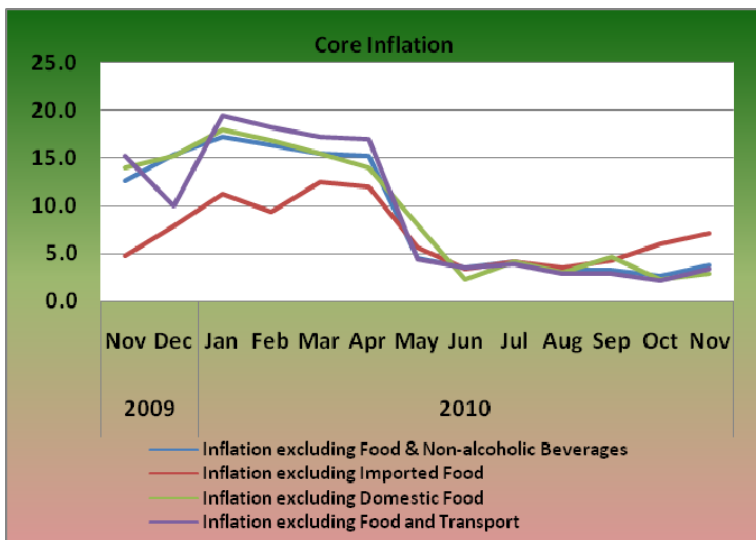
***The Minimum Capital Adequacy Ratio is 10%

****The Required Minimum Liquidity Ratio is 15%

	Aug.10	Sep.10	Oct.10	Nov.10
5a External Trade	<i>(Millions of US\$)</i>			
Exports	19.7†	19.6	17.2	12.4
- O/w Rubber	13.0†	16.3	15.9	10.4
Imports	75.5	64.9	68.5	66.1
- O/w Rice				
Commercial	9.2	5.9	6.3	5.7
Non-commercial	1.0	0.3	-	0.7
- Petroleum Products	12.7	0.8	3.9	1.4
Trade Balance	-55.8†	-45.2	-51.3	-53.8
5b External Trade	<i>(Metric Tons)</i>			
- Rubber	4,471.3†	6,609.4	6,713.4	6,551.0
- Rice Imports O/w				
Commercial	19,425.0	12,158.3	13,062.0	3,944.0
Non-commercial	1,619.9	50.0	-	0.4
- Petroleum Products	17,658	1,800	5,980	1,087
	<i>(In percent)</i>			
6 Overall (Year-on-year) Rate of Inflation	3.3†	5.2†	4.9	5.7
a. Food and Non-alcoholic Beverages Inflation	3.5	7.1	7.3	7.7
- Domestic Food Inflation	4.2	6.5	13.3	15.0
- Imported Food Inflation	2.9	7.7	1.8	1.2
b. Transport Inflation	5.2	5.2	5.7	4.8
c. Imported Fuels Inflation	9.7	8.8	9.3	5.6
Core Inflation	<i>(In percent)</i>			
Inflation excluding Food & Non-alcoholic Beverages	3.2	3.2	2.6	3.7
Inflation excluding Imported Food	3.5	4.3	6.0	7.2
Inflation excluding Domestic Food	3.1	4.7	2.3	2.9
Inflation excluding Food and Transport	2.9	2.9	2.2	3.5

†Revised





CENTRAL BANK OF LIBERIA

CENTRAL BANK OF LIBERIA



Fact Sheet on Key Economic and Financial Indicators November, 2010

Corner of Warren and Carey Streets
 P. O. Box 2048, Monrovia
 Tel: 231-5-960557/5-960556
 Fax: (231) 770-59642
 Website: www.cbl.org.lr