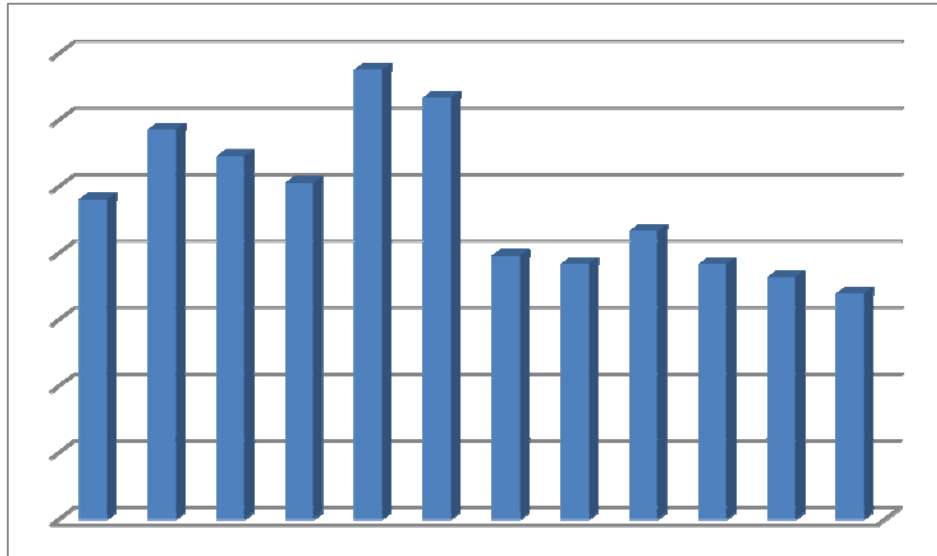




CENTRAL BANK OF LIBERIA



Liberia Financial STATISTICS

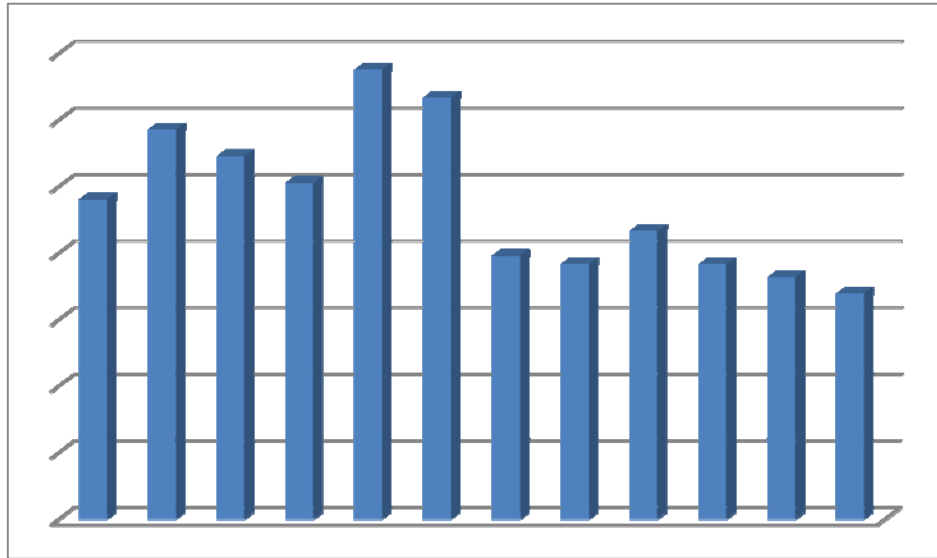
Vol. 17, No. 2

Mar. - Apr. 2015

**Research, Policy and Planning Department
Monrovia, Liberia**



CENTRAL BANK OF LIBERIA



Liberia Financial STATISTICS

THE LIBERIA FINANCIAL STATISTICS (LFS) is produced by the Bank's Research, Policy and Planning Department. Inquiries concerning this publication should be addressed to:

**The Director
Research, Policy and Planning Department
Central Bank of Liberia
Warren and Carey Streets
P. O. Box 2048
Monrovia, Liberia**

Telephone #s: 00(231/880-649-103/886-246-587

Fax #s: 00(231) 077059642

Swift: CBLRRLM

Table of Contents

	INTRODUCTION	-ii-
	Statistics.....	I - 60
Ref. No.	Description of Statistics	Pages
1	MONEY AND BANKING.....	1 – 31
1.1	Depository Corporations Survey –2013	1 – 2
1.1a	Depository Corporations Survey –2014	3 – 4
1.1b	Depository Corporations Survey - 2015	5
1.2	Sectoral Balance Sheet of Other Depository Corp. – 2013.....	6 – 7
1.2a	Sectoral Balance Sheet of Other Depository Corp. –2014 & 2015.....	8 – 9
1.2b	Sectoral Balance Sheet of Other Depository Corp. –2015.....	10
1.3	Sectoral Balance Sheet of Central Bank of Liberia. – 2013.....	11 - 12
1.3a	Sectoral Balance Sheet of Central Bank of Liberia – 2014.....	13 - 14
1.3b	Sectoral Balance Sheet of Central Bank of Liberia – 2015.....	15
1.4	Commercial Banks’ Loans by Economic Sectors – 2013.....	16 - 17
1.4a	Commercial Banks’ Loans by Economic Sectors – 2014	18
1.4b	Commercial Banks’ Loans by Economic Sectors – 2015.....	19
1.5	Commercial Banks’ Interest Rate – 2013-2015.....	20
1.6	Liberian Dollar Exchange Rates - Period Averages: 2013 - 2015.....	21
1.6a	Liberian Dollar Exchange Rates –End of Period: 2013- 2015.....	22
1.6b	Liberian Dollar Exchange Rates – Jan-Feb., 2015.....	23
1.6c	Liberian Dollar Exchange Rates – Mar - Apr., 2015.....	24
1.7	Commercial Banks’ Inflows and Outflows: 2013 - 2015.....	25
1.8	Central Bank of Liberia FX Auction – 2013.....	26-27
1.8a	Central Bank of Liberia FX Auction – 2014.....	28- 29
1.8b	Central Bank of Liberia FX Auction – 2015.....	30
1.9	Central Bank Bills 2013 – 2015.....	31
2	REAL SECTOR	32 - 47
2.1	Harmonized Consumer Price Index (HCPI) – 2013.....	32
2.1a	Harmonized Consumer Price Index (HCPI) – 2013	33
2.1b	Harmonized Consumer Price Index (HCPI) – 2015.....	34
2.1c	HCPI Inflation Rates (Year-on-Year) – 2013.....	35
2.1d	HCPI Inflation Rates (Year-on-Year) – 2014.....	36
2.1e	HCPI Inflation Rates (Year-on-Year) – 2015.....	37
2.2	Key Output Volume – 2013.....	38-39
2.2a	Key Output Volume – 2014.....	40 - 41
2.2b	Key Output Volume – 2015.....	42
2.3	Key Output Value – 2013.....	43-44
2.3a	Key Output Value – 2014.....	45-46
2.3b	Key Output Value – 2015.....	47
3	GOVERNMENT FINANCE.....	48 - 52
3.1	Government Revenue – 2013.....	48
3.1a	Government Revenue – 2014 & 2015.....	49
3.2	Government Expenditure – 2013 – 2015	50-51
3.3	Liberia’s Overall Debt Position – 2013-2015	52
4	EXTERNAL TRADE.....	53-60
4.1	Exports and Imports – 2013 - 2015.....	53
4.1a	Commodity Composition of Exports – 2013.....	53
4.1b	Commodity Composition of Exports Value – 2014 & 2015.....	54
4.2	Commodity Composition of Exports Volume – 2013.....	55
4.2a	Commodity Composition of Exports Volume – 2014.....	56
4.2b	Commodity Composition of Exports Volume – 2015.....	56
4.3a	Commodity Composition of Imports in CIF Values – 2013.....	57
4.4b	Commodity Composition of Imports in CIF Values – 2014	58
4.3b	Commodity Composition of Imports in CIF Values – 2015	59
4.4	Volume of Imports of Petroleum Products – 2013	60
4.4a	Volume of Imports of Petroleum Products – 2014	60
4.4b	Volume of Imports of Petroleum Products – 2015	60

Introduction

The Liberia Financial Statistics (LFS) is a bi-monthly data publication of the Central Bank of Liberia (CBL). It is, among many, a major source of statistical information about the Liberian economy. It provides macroeconomic statistics to both the public and private sectors which include students, researchers, investors, policy makers, etc.

This publication represents the Second Edition (March - April) of 2015. The data coverage extends from January, 2013 to April, 2015 and includes statistics drawn from the four (4) major sectors of the Liberia economy; namely, Monetary, Real, Fiscal and External. The graphs on the cover and inside pages depict the monthly HCPI Inflation rates from May, 2014 - April, 2015.

The CBL's Management is exceptionally grateful to all its many data providers for their cooperation which has immensely contributed to the compilation and timely publication of this document. It is the Bank's hope that this excellent relationship will continue to nurture as we strive together in building a strong statistical database for our country.

MONEY AND BANKING
CENTRAL BANK OF LIBERIA
1.1: Depository Corporations Survey -2013
Millions of Liberian Dollars

	Jan-13	Feb-13	Mar-13	Apr-13	May-13	Jun-13
Foreign Assets (net)	25,362.13	25,972.50	23,822.00	26,081.87	26,082.72	24,080.71
Foreign Assets (MA)	37,001.04	35,986.39	34,705.82	37,255.05	36,537.23	35,842.78
(-) Foreign Liabilities (MA)	20,514.58	20,518.46	20,514.37	20,818.29	21,048.37	21,054.08
Foreign Assets (CoB)	11,216.28	12,956.76	11,870.53	11,887.71	12,539.04	11,103.21
(-) Foreign Liabilities (CoB)	2,340.60	2,452.18	2,239.98	2,242.60	1,945.17	1,811.20
Domestic Credit	38,311.07	38,784.54	39,924.80	39,473.35	42,553.34	40,823.94
Claims on General Government (net)	14,752.85	15,463.28	17,168.27	14,662.68	16,483.21	15,143.81
Claims on General Government (MA)	20,269.13	20,261.74	20,195.25	20,399.75	20,453.78	20,313.57
(-) General Government Deposits (MA)	4,635.26	3,854.85	2,121.13	4,792.50	3,171.86	4,448.43
Claims on General Government (CoB)	445.51	431.31	431.31	422.72	485.40	619.75
(-) General Government Deposits (CoB)	1,326.54	1,374.92	1,337.16	1,367.30	1,284.11	1,341.09
Claims on Public Corporations (MA)	-	-	-	-	-	-
Claims on Public Corporations (CoB)	1,694.50	2,125.18	2,198.98	2,269.67	2,433.18	2,288.32
Claims on Private Sector (MA)	137.72	143.16	159.28	169.72	174.06	177.02
Claims on Private Sector (CoB)	21,676.74	20,942.10	20,302.81	22,266.15	23,225.59	23,143.24
Claims on NBFIs (MA)	-	-	-	-	-	-
Claims on NBFIs (CoB)	49.26	110.82	95.45	105.13	237.30	71.54
Money	44,475.91	45,766.34	46,745.16	47,272.67	49,880.71	48,287.70
Currency Outside Banks (MA)	6,482.63	6,490.74	6,672.39	6,436.05	6,495.42	6,474.69
Liberian Currency in Circulation (MA)	8,297.97	8,248.39	8,197.66	8,095.97	8,088.79	8,147.17
(-) Currency Holdings (CoB)	1,815.34	1,757.65	1,525.27	1,659.92	1,593.37	1,672.47
Demand Deposits	24,216.29	24,533.50	25,619.96	25,983.50	28,137.03	26,845.24
Demand Deposits (MA)	381.37	439.26	453.06	507.13	510.45	202.22
Demand Deposits (CoB)	23,834.93	24,094.24	25,166.90	25,476.36	27,626.58	26,643.02
Other Deposits	13,776.99	14,742.10	14,452.82	14,853.12	15,248.25	14,967.77
Other Deposits (MA)	337.37	335.56	358.64	557.61	546.74	65.38
Time and Savings Deposits (CoB)	13,439.61	14,406.54	14,094.18	14,295.52	14,701.51	14,902.38
Bonds and Securities (CoB)	-	-	-	-	-	-
Restricted Deposits	43.68	43.68	43.68	43.68	43.68	43.68
Capital Accounts	27,645.72	27,504.72	27,636.73	28,067.38	28,126.11	28,225.45
Capital Accounts (MA)	16,104.92	15,979.54	15,836.03	16,076.72	15,997.22	16,101.70
Capital Accounts (CoB)	11,540.80	11,525.17	11,800.70	11,990.66	12,128.89	12,123.75
Other Items (net)	(8,154.73)	(8,222.14)	(10,320.14)	(9,270.90)	(8,867.69)	(11,586.79)
Unclassified Liabilities (MA)	12,862.11	12,811.02	12,810.45	12,829.57	13,110.95	13,175.96
(-) Unclassified Assets (MA)	16,871.81	16,873.16	17,190.05	17,411.86	17,627.45	17,887.37
(-) Unclassified Assets (CoB)	7,696.75	8,133.02	9,329.39	8,659.55	8,693.57	10,530.38
Unclassified Liabilities (CoB)	5,353.40	5,961.99	5,079.44	5,060.67	5,656.10	5,491.47
Commercial Banks' Deposits (MA)	13,552.69	13,434.94	14,297.49	13,950.63	14,733.09	13,551.86
(-) Reserves (CoB)	15,377.13	15,121.80	15,995.90	15,816.74	16,489.88	15,789.74
Currency Holdings (CoB)	1,815.34	1,757.65	1,525.27	1,659.92	1,593.37	1,672.47
Liabilities to Central Bank (CoB)	1,227.07	912.73	1,412.81	1,913.71	1,693.08	2,164.77
(-) Claims on Domestic Banks (MA)	2,374.15	2,331.42	2,312.67	2,366.43	2,387.48	2,535.10
(-) Claims on Central Bank of Liberia (CoB)	931.68	931.68	931.68	944.04	956.39	956.39
(-) Unbalanced Items	286.18	290.61	314.11	513.22	500.49	55.66
Vertical Check	0.00	(0.00)	0.00	(0.00)	(0.00)	0.00

Source : Central Bank of Liberia, Monrovia, Liberia.

MONEY AND BANKING

CENTRAL BANK OF LIBERIA

1.1: Depository Corporations Survey -2013 Cont'd

Millions of Liberian Dollars

	Jul-13	Aug-13	Sep-13	Oct-13	Nov-13	Dec-13
Foreign Assets (net)	22,554.36	23,119.11	20,476.21	21,824.42	24,247.13	28,359.39
Foreign Assets (MA)	34,819.05	36,091.16	36,699.59	36,998.76	36,926.77	40,709.46
(-) Foreign Liabilities (MA)	21,328.24	21,875.87	22,014.21	22,287.05	22,424.02	22,699.22
Foreign Assets (CoB)	10,878.71	10,878.71	7,796.45	9,332.03	12,526.04	12,104.59
(-) Foreign Liabilities (CoB)	1,815.16	1,974.89	2,005.62	2,219.32	2,781.66	1,755.44
Domestic Credit	44,812.11	44,444.49	46,276.99	47,809.69	48,754.41	48,833.82
Claims on General Government (net)	17,041.40	16,659.12	16,750.01	16,775.85	17,322.90	17,308.58
Claims on General Government (MA)	20,822.54	21,336.11	21,464.50	21,721.29	21,849.68	21,776.46
(-) General Government Deposits (MA)	3,332.41	4,351.88	5,104.36	5,226.50	5,030.31	5,497.06
Claims on General Government (CoB)	821.64	821.64	1,570.61	1,479.72	1,780.42	1,800.16
(-) General Government Deposits (CoB)	1,270.37	1,146.75	1,180.75	1,198.66	1,276.89	770.98
Claims on Public Corporations (MA)	-	-	-	-	-	-
Claims on Public Corporations (CoB)	2,472.45	2,472.45	2,794.29	2,907.89	2,983.59	1,862.64
Claims on Private Sector (MA)	151.22	165.88	169.42	175.52	175.94	174.90
Claims on Private Sector (CoB)	25,054.17	25,054.17	26,461.47	27,839.99	28,159.09	29,373.11
Claims on NBFIs (MA)	-	-	-	-	-	-
Claims on NBFIs (CoB)	92.88	92.88	101.81	110.43	112.89	114.59
Money	49,605.40	50,286.68	49,540.13	49,472.22	52,967.10	55,123.68
Currency Outside Banks (MA)	6,411.54	6,692.12	6,558.91	6,773.35	7,172.28	8,271.72
Liberian Currency in Circulation (MA)	8,244.04	8,524.61	8,513.84	8,562.16	8,600.60	9,467.97
(-) Currency Holdings (CoB)	1,832.50	1,832.50	1,954.93	1,788.81	1,428.32	1,196.25
Demand Deposits	28,037.75	28,509.99	27,344.60	27,221.85	29,588.17	30,562.05
Demand Deposits (MA)	210.11	233.13	255.12	282.64	159.31	167.24
Demand Deposits (CoB)	27,827.65	28,276.86	27,089.48	26,939.21	29,428.86	30,394.81
Other Deposits	15,156.10	15,084.58	15,636.62	15,477.02	16,206.65	16,289.91
Other Deposits (MA)	149.76	49.33	53.55	65.81	65.18	37.56
Time and Savings Deposits (CoB)	15,006.34	15,035.24	15,583.07	15,411.20	16,141.47	16,252.35
Bonds and Securities (CoB)	-	-	-	-	-	-
Restricted Deposits	43.68	43.68	43.68	43.68	43.68	43.68
Capital Accounts	28,813.16	29,253.69	29,380.98	29,439.02	29,806.05	29,752.36
Capital Accounts (MA)	16,494.06	16,897.10	16,981.92	17,199.41	17,259.16	17,186.87
Capital Accounts (CoB)	12,319.10	12,356.58	12,399.06	12,239.60	12,546.89	12,565.49
Other Items (net)	(10,946.01)	(11,971.12)	(12,158.04)	(9,255.00)	(9,750.11)	(7,688.94)
Unclassified Liabilities (MA)	13,361.10	14,684.82	14,788.53	15,122.57	15,167.55	16,298.02
(-) Unclassified Assets (MA)	18,331.19	18,727.27	18,823.74	19,039.86	19,173.87	19,388.05
(-) Unclassified Assets (CoB)	8,845.58	8,845.58	9,295.57	9,192.51	8,968.26	8,941.69
Unclassified Liabilities (CoB)	4,331.19	2,959.54	2,377.98	4,797.61	4,078.61	5,611.67
Commercial Banks' Deposits (MA)	14,038.53	12,954.18	12,698.34	12,467.13	12,729.62	13,007.07
(-) Reserves (CoB)	15,645.95	15,645.95	14,435.07	14,341.39	13,696.64	15,075.75
Currency Holdings (CoB)	1,832.50	1,832.50	1,954.93	1,788.81	1,428.32	1,196.25
Liabilities to Central Bank (CoB)	2,173.07	2,993.00	2,750.80	3,329.85	2,904.05	2,853.29
(-) Claims on Domestic Banks (MA)	3,044.24	3,260.94	3,262.77	3,288.49	3,320.10	2,320.84
(-) Claims on Central Bank of Liberia (CoB)	956.39	956.39	956.39	956.40	956.40	956.40
(-) Unbalanced Items	140.96	40.98	44.91	57.68	57.01	27.50
Vertical Check	0.00	0.00	0.00	(0.00)	(0.00)	(0.00)

NBFIs: Non-Bank Financial Institutions

Source: Central Bank of Liberia, Monrovia, Liberia.

MONEY AND BANKING

CENTRAL BANK OF LIBERIA

1.1a: Depository Corporations Survey -2014
Millions of Liberian Dollars

	Jan-14	Feb-14	Mar-14	Apr-14	May-14	Jun-14
Foreign Assets (net)	24,833.02	24,287.28	23,515.38	29,060.44	28,857.47	28,138.10
Foreign Assets (MA)	40,096.25	40,492.69	40,012.39	40,670.34	40,824.42	41,432.29
(-) Foreign Liabilities (MA)	22,148.97	22,974.59	23,525.83	24,074.75	23,808.76	24,982.22
Foreign Assets (CoB)	8,972.66	8,880.19	9,193.20	14,593.16	13,869.73	13,809.48
(-) Foreign Liabilities (CoB)	2,086.91	2,111.00	2,164.37	2,128.30	2,027.92	2,121.46
Domestic Credit	48,644.87	51,397.30	56,186.20	55,944.07	52,722.27	54,333.08
Claims on General Government (net)	16,491.89	18,573.07	22,112.21	21,863.03	18,810.14	18,746.35
Claims on General Government (MA)	21,270.89	22,029.25	22,534.81	23,040.38	22,528.10	23,436.73
(-) General Government Deposits (MA)	6,458.50	5,989.74	3,040.48	3,263.88	4,670.00	6,062.35
Claims on General Government (CoB)	2,381.75	3,197.73	3,290.44	3,000.74	1,857.68	2,277.66
(-) General Government Deposits (CoB)	702.25	664.17	672.56	914.21	905.64	905.70
Claims on Public Corporations (MA)	-	-	-	-	-	-
Claims on Public Corporations (CoB)	1,763.10	1,862.40	2,011.74	2,320.59	2,036.04	2,088.64
Claims on Private Sector (MA)	177.14	178.13	178.61	239.35	264.76	280.04
Claims on Private Sector (CoB)	30,100.00	30,669.82	31,765.35	31,400.77	31,492.19	33,092.08
Claims on NBFIs (MA)	-	-	-	-	-	-
Claims on NBFIs (CoB)	112.74	113.89	118.29	120.34	119.14	125.98
Money	51,931.40	53,652.00	54,577.33	54,396.70	52,623.40	52,477.69
Currency Outside Banks (MA)	7,487.82	7,345.88	7,706.22	7,728.34	7,639.75	7,446.50
Liberian Currency in Circulation (MA)	8,592.16	8,560.85	8,820.19	8,873.24	9,023.65	9,029.34
(-) Currency Holdings (CoB)	1,104.34	1,214.97	1,113.96	1,144.90	1,383.89	1,582.85
Demand Deposits	28,651.93	29,470.71	29,605.85	29,914.97	27,690.26	27,408.24
Demand Deposits (MA)	165.97	255.18	250.47	316.11	356.17	454.88
Demand Deposits (CoB)	28,485.96	29,215.52	29,355.39	29,598.87	27,334.09	26,953.36
Other Deposits	15,791.64	16,835.42	17,265.25	16,753.38	17,293.39	17,622.96
Other Deposits (MA)	49.04	27.20	38.78	178.72	52.78	72.17
Time and Savings Deposits (CoB)	15,742.60	16,808.22	17,226.47	16,574.66	17,240.61	17,550.78
Bonds and Securities (CoB)	-	-	-	-	-	-
Restricted Deposits	44.00	44.00	43.68	24.36	24.36	24.36
Capital Accounts	29,038.60	30,106.70	30,842.62	31,271.74	30,917.22	33,417.99
Capital Accounts (MA)	16,568.20	17,178.38	17,539.27	17,840.01	17,459.06	18,366.98
Capital Accounts (CoB)	12,470.40	12,928.32	13,303.36	13,431.73	13,458.17	15,051.01
Other Items (net)	7,591.70	(8,090.91)	(5,723.26)	(509.56)	(1,932.47)	(3,376.69)
Unclassified Liabilities (MA)	15,851.20	16,545.76	19,435.70	19,173.93	17,850.97	18,750.56
(-) Unclassified Assets (MA)	19,084.63	19,721.87	20,284.66	20,656.54	20,630.21	21,903.88
(-) Unclassified Assets (CoB)	7,742.38	8,563.74	9,140.17	9,545.86	9,622.30	10,678.90
Unclassified Liabilities (CoB)	4,916.60	4,620.43	5,456.54	10,966.30	11,519.83	11,819.42
Commercial Banks' Deposits (MA)	13,041.22	13,150.06	12,647.31	13,200.09	13,471.79	11,888.53
(-) Reserves (CoB)	14,433.87	14,222.86	13,665.23	13,578.88	14,389.51	13,311.40
Currency Holdings (CoB)	1,104.34	1,214.97	1,113.96	1,144.90	1,383.89	1,582.85
Liabilities to Central Bank (CoB)	2,082.38	2,143.58	1,986.66	2,014.23	1,955.95	2,087.44
(-) Claims on Domestic Banks (MA)	2,255.20	2,268.28	2,294.94	2,304.28	2,431.78	2,539.25
(-) Claims on Central Bank of Liberia (CoB)	1,005.82	1,005.82	1,005.82	1,092.32	1,079.96	1,129.39
(-) Unbalanced Items	39.10	16.87	27.39	168.87	38.88	57.33
Vertical Check	0.00	(0.00)	(0.00)	(0.00)	(0.00)	(0.00)

NBFIs: Non-Bank Financial Institutions
Source: Central Bank of Liberia, Monrovia, Liberia.

MONEY AND BANKING

CENTRAL BANK OF LIBERIA

1.1a: Depository Corporations Survey -2014 -continues

Millions of Liberian Dollars

	Jul-14	Aug-14	Sep-14	Oct-14	Nov-14	Dec-14
Foreign Assets (net)	27,025.49	26,950.99	29,427.62	34,698.99	35,258.59	34,864.94
Foreign Assets (MA)	37,961.71	38,701.63	40,239.58	44,588.07	45,699.60	42,491.49
(-) Foreign Liabilities (MA)	22,773.96	23,326.03	22,410.58	22,410.58	22,145.38	21,880.18
Foreign Assets (CoB)	13,548.47	13,681.55	13,843.35	14,938.19	14,055.61	16,690.97
(-) Foreign Liabilities (CoB)	1,710.72	2,106.16	2,244.74	2,416.70	2,351.25	2,437.34
Domestic Credit	50,215.95	49,835.44	48,980.99	46,852.86	46,182.51	48,584.71
Claims on General Government (net)	16,998.38	16,551.52	15,424.09	13,124.63	11,947.80	15,381.48
Claims on General Government (MA)	21,446.46	21,944.03	21,943.68	21,944.03	21,695.25	21,446.46
(-) General Government Deposits (MA)	6,444.55	7,508.63	8,594.71	11,560.21	12,436.51	8,553.02
Claims on General Government (CoB)	2,974.50	2,987.67	2,937.87	3,442.27	3,410.32	3,153.55
(-) General Government Deposits (CoB)	978.03	871.55	862.74	701.46	721.25	665.51
Claims on Public Corporations (MA)	-	-	-	-	-	-
Claims on Public Corporations (CoB)	1,939.12	1,978.52	1,991.16	1,982.98	1,867.17	1,874.68
Claims on Private Sector (MA)	265.60	277.85	281.15	288.09	290.73	263.10
Claims on Private Sector (CoB)	30,896.14	30,908.25	31,164.97	31,334.07	31,949.76	30,939.35
Claims on NBFIs (MA)	-	-	-	-	-	-
Claims on NBFIs (CoB)	116.71	119.29	119.62	123.09	127.05	126.09
Money	49,782.86	49,779.18	50,510.57	52,390.90	53,253.35	56,218.20
Currency Outside Banks (MA)	7,400.30	7,252.24	6,880.86	7,101.17	7,241.21	8,358.98
Liberian Currency in Circulation (MA)	8,885.30	8,761.01	8,642.53	8,522.35	8,639.33	9,367.55
(-) Currency Holdings (CoB)	1,484.99	1,508.77	1,761.66	1,421.19	1,398.13	1,008.58
Demand Deposits	25,575.36	25,592.37	26,444.34	27,876.34	28,836.74	30,796.79
Demand Deposits (MA)	385.93	379.88	2,155.67	2,129.64	2,798.32	2,521.31
Demand Deposits (CoB)	25,189.43	25,212.49	24,288.67	25,746.70	26,038.42	28,275.49
Other Deposits	16,807.20	16,934.57	17,185.36	17,413.40	17,175.40	17,062.43
Other Deposits (MA)	53.63	29.28	33.88	115.99	50.42	51.01
Time and Savings Deposits (CoB)	16,753.56	16,905.29	17,151.48	17,297.41	17,124.98	17,011.42
Bonds and Securities (CoB)	-	-	-	-	-	-
Restricted Deposits	24.30	24.30	22.30	22.30	12.34	12.34
Capital Accounts	30,003.75	29,906.29	29,790.13	30,978.61	30,471.80	28,950.82
Capital Accounts (MA)	15,984.34	15,833.09	15,657.50	16,671.85	16,208.28	15,748.55
Capital Accounts (CoB)	14,019.41	14,073.19	14,132.63	14,306.75	14,263.52	13,202.27
Other Items (net)	(2,515.84)	(2,894.07)	(1,880.51)	(1,723.98)	(2,245.98)	(1,680.71)
Unclassified Liabilities (MA)	18,651.24	19,116.34	18,775.85	17,858.24	17,693.93	16,476.42
(-) Unclassified Assets (MA)	20,632.42	21,439.62	20,773.75	19,771.97	19,961.90	19,741.03
(-) Unclassified Assets (CoB)	10,390.59	10,300.88	9,908.20	10,597.26	10,417.40	10,010.99
Unclassified Liabilities (CoB)	11,391.26	11,564.66	11,350.33	11,925.54	12,043.61	12,185.44
Commercial Banks' Deposits (MA)	9,407.86	9,763.55	9,341.84	9,683.99	10,056.88	11,731.09
(-) Reserves (CoB)	11,094.36	11,719.12	11,084.72	11,029.99	11,702.84	11,817.42
Currency Holdings (CoB)	1,484.99	1,508.77	1,761.66	1,421.19	1,398.13	1,008.58
Liabilities to Central Bank (CoB)	1,923.64	1,992.84	2,052.19	2,086.20	2,043.68	1,892.15
(-) Claims on Domestic Banks (MA)	2,271.58	2,345.91	2,359.45	2,345.46	2,366.27	2,371.93
(-) Claims on Central Bank of Liberia (CoB)	1,030.48	1,055.20	1,055.20	1,055.20	1,068.90	1,068.90
(-) Unbalanced Items	44.59	20.50	18.94	100.75	35.11	35.89
Vertical Check	0.00	0.01	0.00	0.00	0.00	0.00

NBFIs: Non-Bank Financial Institutions

Source : Central Bank of Liberia, Monrovia, Liberia.

MONEY AND BANKING

CENTRAL BANK OF LIBERIA

1.1b: Depository Corporations Survey - 2015
Millions of Liberian Dollars

	Jan-15	Feb-15	Mar-15	Apr-15
Foreign Assets (net)	37,872.47	42,769.44	38,946.65	35,970.37
Foreign Assets (MA)	45,252.76	49,026.39	47,305.96	45,212.01
(-) Foreign Liabilities (MA)	22,410.58	22,410.58	22,410.58	22,410.58
Foreign Assets (CoB)	17,644.50	18,849.34	17,160.98	16,244.60
(-) Foreign Liabilities (CoB)	2,614.21	2,695.72	3,109.71	3,075.65
Domestic Credit	46,259.98	46,170.20	45,103.69	44,933.27
Claims on General Government (net)	12,955.29	12,820.84	10,784.98	10,718.48
Claims on General Government (MA)	21,944.03	21,944.03	21,944.03	21,944.03
(-) General Government Deposits (MA)	11,697.31	11,777.04	13,794.10	12,768.09
Claims on General Government (CoB)	3,476.08	3,414.74	3,464.18	2,274.30
(-) General Government Deposits (CoB)	767.51	760.89	829.13	2,274.30
Claims on Public Corporations (MA)	-	-	-	-
Claims on Public Corporations (CoB)	1,870.16	1,807.18	1,931.39	1,975.41
Claims on Private Sector (MA)	270.88	292.97	304.04	309.76
Claims on Private Sector (CoB)	31,038.70	31,127.05	31,954.18	31,799.93
Claims on NBFIs (MA)	-	-	-	-
Claims on NBFIs (CoB)	124.95	122.16	129.10	129.68
Money	55,350.46	59,758.26	56,712.86	57,027.36
Currency Outside Banks (MA)	7,541.52	7,423.38	7,369.76	7,359.75
Liberian Currency in Circulation (MA)	9,317.65	8,880.28	8,772.52	8,783.83
(-) Currency Holdings (CoB)	1,776.13	1,456.90	1,402.76	1,424.08
Demand Deposits	31,274.09	30,859.22	30,775.58	31,346.14
Demand Deposits (MA)	1,932.71	1,602.08	1,584.78	1,479.63
Demand Deposits (CoB)	29,341.38	29,257.14	29,190.79	29,866.51
Other Deposits	16,534.85	21,475.66	18,567.53	18,321.47
Other Deposits (MA)	21.24	3,891.35	63.74	83.36
Time and Savings Deposits (CoB)	16,513.60	17,584.31	18,503.79	18,238.11
Bonds and Securities (CoB)	-	-	-	-
Restricted Deposits	10.86	10.86	10.86	10.86
Capital Accounts	29,927.99	29,971.41	30,486.21	30,229.65
Capital Accounts (MA)	16,241.23	16,230.38	16,256.83	15,982.85
Capital Accounts (CoB)	13,686.76	13,741.03	14,229.38	14,246.80
Other Items (net)	(1,135.62)	3,090.46	(3,095.86)	(6,280.87)
Unclassified Liabilities (MA)	17,978.92	17,797.97	17,780.51	16,836.63
(-) Unclassified Assets (MA)	20,428.28	20,540.87	20,649.29	20,799.16
(-) Unclassified Assets (CoB)	9,103.37	9,694.64	10,466.33	10,408.14
Unclassified Liabilities (CoB)	12,315.49	11,918.87	11,580.58	12,159.26
Commercial Banks' Deposits (MA)	10,893.54	11,515.96	12,000.39	12,363.42
(-) Reserves (CoB)	12,845.75	11,817.61	13,212.19	16,361.06
Currency Holdings (CoB)	1,776.13	1,456.90	1,402.76	1,424.08
Liabilities to Central Bank (CoB)	1,922.59	1,932.80	1,933.00	1,933.06
(-) Claims on Domestic Banks (MA)	2,588.63	2,287.64	2,449.79	2,434.38
(-) Claims on Central Bank of Liberia (CoB)	1,068.90	1,068.90	1,068.90	1,068.90
(-) Unbalanced Items	12.65	3,877.60	53.40	74.32
Vertical Check	0.00	0.00	0.00	0.00

NBFIs: Non-Bank Financial Institutions
Source: Central Bank of Liberia, Monrovia, Liberia.

MONEY AND BANKING

CENTRAL BANK OF LIBERIA

1.2: Sectoral Balance Sheet of Other Depository Corporations - 2013

'Thousands of Liberian Dollars

	Jan-13	Feb-13	Mar-13	Apr-13	May-13	Jun-13
Assets						
Reserves	15,377,125.91	15,121,803.75	15,995,900.50	15,816,742.76	16,489,882.86	15,789,742.63
<i>of which: Cash on Hand: Coins/LD Notes</i>	1,815,339.50	1,757,652.44	1,525,266.54	1,659,920.76	1,593,369.46	1,672,474.30
Foreign Assets	11,216,279.32	12,956,756.84	11,870,533.94	11,887,714.55	12,539,038.34	11,103,210.65
Claims on General Government	445,507.03	431,313.15	431,311.81	422,720.45	485,401.01	619,753.73
Claims on Public Corporations	1,694,500.18	2,125,179.58	2,198,984.22	2,269,671.46	2,433,175.23	2,288,324.09
Claims on Private Sector	21,676,739.41	20,942,095.80	20,302,812.71	22,266,146.29	23,225,586.91	23,143,238.31
Claims on Central Bank of Liberia	931,678.12	931,678.12	931,678.12	944,035.34	956,392.57	956,392.57
Claims on NBFIs	49,259.63	110,822.70	95,454.18	105,134.99	237,301.09	71,543.63
Unclassified Assets	7,696,752.26	8,133,022.08	9,329,387.12	8,659,546.75	8,693,565.65	10,530,375.84
Total Assets	59,087,841.85	60,752,672.02	61,156,062.59	62,371,712.61	65,060,343.66	64,502,581.46
	Jan-13	Feb-13	Mar-13	Apr-13	May-13	Jun-13
Liabilities						
Demand Deposits	23,834,928.99	24,094,236.03	25,166,895.83	25,476,364.73	27,626,581.64	26,643,021.12
Time and Savings Deposits	13,439,611.47	14,406,542.44	14,094,179.42	14,295,515.36	14,701,510.89	14,902,384.19
Restricted Deposits	24,896.38	24,896.38	24,896.38	24,896.38	24,896.38	24,896.38
Bonds and Securities	-	-	-	-	-	-
Foreign Liabilities	2,340,599.56	2,452,179.20	2,239,982.15	2,242,603.82	1,945,172.23	1,811,199.57
Government Deposits	1,326,535.94	1,374,924.31	1,337,161.10	1,367,298.61	1,284,111.22	1,341,089.78
Liabilities to Central Bank of Liberia	1,227,074.05	912,730.54	1,412,806.86	1,913,706.09	1,693,076.90	2,164,768.61
Capital Accounts	11,540,798.22	11,525,174.21	11,800,704.87	11,990,661.09	12,128,889.83	12,123,753.58
Unclassified Liabilities	5,353,397.24	5,961,988.91	5,079,435.96	5,060,666.53	5,656,104.56	5,491,468.22
Total Liabilities	59,087,841.85	60,752,672.02	61,156,062.59	62,371,712.61	65,060,343.66	64,502,581.46
Vertical Check (Assets/Liabilities)	-	-	-	-	-	-

NBFIs: Non-Bank Financial Institutions

Source : Central Bank of Liberia, Monrovia, Liberia.

MONEY AND BANKING
CENTRAL BANK OF LIBERIA
1.2: Sectoral Balance Sheet of Other Depository Corporations - 2013 Cont'd
'Thousands of Liberian Dollars

	Jul-13	Aug-13	Sep-13	Oct-13	Nov-13	Dec-13
Assets						
Reserves	15,645,952.40	15,645,952.40	14,435,065.59	14,341,387.88	13,696,643.78	15,075,747.93
<i>of which: Cash on Hand: Coins/LD Notes</i>	1,832,495.58	1,832,495.58	1,954,930.52	1,788,805.34	1,428,324.53	1,196,247.16
Foreign Assets	10,878,707.15	10,878,707.15	7,796,449.20	9,332,032.44	12,526,037.69	12,104,593.30
Claims on General Government	821,644.05	821,644.05	1,570,614.30	1,479,720.71	1,780,421.41	1,800,160.80
Claims on Public Corporations	2,472,451.20	2,472,451.20	2,794,285.27	2,907,888.98	2,983,586.61	1,862,638.06
Claims on Private Sector	25,054,167.16	25,054,167.16	26,461,469.69	27,839,994.64	28,159,091.91	29,373,111.94
Claims on Central Bank of Liberia	956,392.57	956,392.57	956,392.57	956,392.57	956,392.57	956,392.57
Claims on NBFIs	92,875.88	92,875.88	101,808.12	110,434.82	112,890.86	114,588.59
Unclassified Assets	8,845,577.96	8,845,577.96	9,295,565.41	9,192,507.84	8,968,258.57	8,941,690.91
Total Assets	64,767,768.38	64,767,768.38	63,411,650.15	66,160,359.88	69,183,323.42	70,228,924.11
	Jul-13	Aug-13	Sep-13	Oct-13	Nov-13	Dec-13
Liabilities						
Demand Deposits	27,827,645.44	28,276,862.14	27,089,482.29	26,939,211.45	29,428,862.06	30,394,809.93
Time and Savings Deposits	15,006,342.91	15,035,242.88	15,583,067.02	15,411,204.56	16,141,466.29	16,252,347.34
Restricted Deposits	24,896.38	24,896.38	24,896.38	24,896.38	24,896.38	24,896.38
Bonds and Securities	-	-	-	-	-	-
Foreign Liabilities	1,815,156.35	1,974,890.07	2,005,617.74	2,219,323.15	2,781,661.78	1,755,440.15
Government Deposits	1,270,371.68	1,146,752.40	1,180,748.48	1,198,662.48	1,276,887.60	770,983.82
Liabilities to Central Bank of Liberia	2,173,066.34	2,993,004.64	2,750,795.42	3,329,847.37	2,904,051.15	2,853,286.54
Capital Accounts	12,319,098.93	12,356,583.13	12,399,061.82	12,239,603.61	12,546,893.19	12,565,490.30
Unclassified Liabilities	4,331,190.33	2,959,536.73	2,377,980.99	4,797,610.88	4,078,604.96	5,611,669.64
Total Liabilities	64,767,768.38	64,767,768.38	63,411,650.15	66,160,359.88	69,183,323.42	70,228,924.11
Vertical Check (Assets/Liabilities)	-	-	-	-	-	-

NBFIs: Non-Bank Financial Institutions
Source : Central Bank of Liberia, Monrovia, Liberia.

MONEY AND BANKING

CENTRAL BANK OF LIBERIA

1.2a: Sectoral Balance Sheet of Other Depository Corporations - 2014

'Thousands of Liberian Dollars

	Jan-14	Feb-14	Mar-14	Apr-14	May-14	Jun-14
Assets						
Reserves	14,433,866.18	14,222,864.56	13,665,228.60	13,578,875.93	14,389,514.43	13,311,399.10
of which: Cash on Hand: Coins/LD Notes	1,104,335.07	1,214,973.54	1,113,964.46	1,144,901.45	1,383,890.78	1,582,847.08
Foreign Assets	8,972,655.47	8,880,187.55	9,193,198.22	14,593,162.01	13,869,728.73	13,809,481.50
Claims on General Government	2,381,753.47	3,197,731.91	3,290,435.41	3,000,736.40	1,857,678.18	2,277,664.72
Claims on Public Corporations	1,763,099.50	1,862,398.05	2,011,744.34	2,320,591.91	2,036,042.15	2,088,637.23
Claims on Private Sector	30,099,999.43	30,669,820.25	31,765,350.51	31,400,766.76	31,492,189.81	33,092,083.24
Claims on Central Bank of Liberia	1,005,821.48	1,005,821.48	1,005,821.48	1,092,322.07	1,079,964.85	1,129,393.76
Claims on NBFIs	112,740.93	113,885.66	118,289.83	120,335.49	119,137.33	125,976.57
Unclassified Assets	7,742,380.47	8,563,741.82	9,140,168.32	9,545,864.12	9,622,302.32	10,678,895.93
Total Assets	66,512,316.93	68,516,451.28	70,190,236.71	75,652,654.70	74,466,557.79	76,513,532.06
	Jan-14	Feb-14	Mar-14	Apr-14	May-14	Jun-14
Liabilities						
Demand Deposits	28,485,958.34	29,215,524.22	29,355,385.78	29,598,869.57	27,334,089.97	26,953,355.00
Time and Savings Deposits	15,742,600.20	16,808,217.66	17,226,471.57	16,574,662.66	17,240,614.44	17,550,781.43
Restricted Deposits	25,217.91	25,217.91	24,896.38	24,358.74	24,358.74	24,358.74
Bonds and Securities	-	-	-	-	-	-
Foreign Liabilities	2,086,908.88	2,110,996.74	2,164,368.84	2,128,304.82	2,027,920.57	2,121,456.93
Government Deposits	702,254.21	664,174.32	672,557.89	914,207.11	905,635.37	905,703.45
Liabilities to Central Bank of Liberia	2,082,378.41	2,143,579.90	1,986,659.90	2,014,228.93	1,955,945.53	2,087,444.37
Capital Accounts	12,470,400.73	12,928,315.18	13,303,355.61	13,431,725.71	13,458,165.28	15,051,014.47
Unclassified Liabilities	4,916,598.25	4,620,425.34	5,456,540.73	10,966,297.16	11,519,827.89	11,819,417.67
Total Liabilities	66,512,316.93	68,516,451.28	70,190,236.71	75,652,654.70	74,466,557.79	76,513,532.06
Vertical Check (Assets/Liabilities)	-	-	-	-	-	-

NBFIs: Non-Bank Financial Institutions

Source : Central Bank of Liberia, Monrovia, Liberia.

MONEY AND BANKING

CENTRAL BANK OF LIBERIA

1.2a: Sectoral Balance Sheet of Other Depository Corporations - 2014 - continues & 2015

'Thousands of Liberian Dollars

	Jul-14	Aug-14	Sep-14	Oct-14	Nov-14	Dec-14
Assets						
Reserves	11,094,357.61	11,719,120.79	11,084,719.82	11,029,993.54	11,702,842.68	11,817,420.52
of which: Cash on Hand: Coins/LD Notes	1,484,993.47	1,508,769.35	1,761,662.61	1,421,185.29	1,398,125.49	1,008,577.18
Foreign Assets	13,548,467.36	13,681,552.80	13,843,350.46	14,938,194.96	14,055,614.57	16,690,971.14
Claims on General Government	2,974,496.68	2,987,670.04	2,937,867.45	3,442,271.48	3,410,318.37	3,153,554.71
Claims on Public Corporations	1,939,115.35	1,978,523.18	1,991,155.95	1,982,975.16	1,867,166.87	1,874,680.86
Claims on Private Sector	30,896,137.65	30,908,251.31	31,164,971.01	31,334,069.86	31,949,761.77	30,939,350.59
Claims on Central Bank of Liberia	1,030,481.98	1,055,196.43	1,055,196.43	1,055,197.43	1,068,900.18	1,068,901.18
Claims on NBFIs	116,713.88	119,287.47	119,621.01	123,089.65	127,051.75	126,092.96
Unclassified Assets	10,390,585.08	10,300,882.09	9,908,196.58	10,597,263.15	10,417,404.93	10,010,994.95
Total Assets	71,990,355.60	72,750,484.11	72,105,078.72	74,503,055.22	74,599,061.13	75,681,966.92
	Jul-14	Aug-14	Sep-14	Oct-14	Nov-14	Dec-14
Liabilities						
Demand Deposits	25,189,429.71	25,212,492.02	24,288,669.20	25,746,698.05	26,038,420.20	28,275,487.95
Time and Savings Deposits	16,753,563.58	16,905,285.35	17,151,484.25	17,297,407.00	17,124,981.95	17,011,424.81
Restricted Deposits	24,304.77	24,304.77	22,302.14	22,302.14	12,342.89	12,342.89
Bonds and Securities	-	-	-	-	-	-
Foreign Liabilities	1,710,718.39	2,106,162.50	2,244,736.27	2,416,700.66	2,351,251.58	2,437,335.12
Government Deposits	978,027.50	871,550.00	862,738.91	701,459.63	721,251.50	665,512.49
Liabilities to Central Bank of Liberia	1,923,639.56	1,992,837.67	2,052,192.67	2,086,197.67	2,043,683.64	1,892,154.74
Capital Accounts	14,019,409.19	14,073,192.69	14,132,625.45	14,306,753.57	14,263,517.08	13,202,270.67
Unclassified Liabilities	11,391,262.90	11,564,659.10	11,350,329.82	11,925,536.50	12,043,612.29	12,185,438.25
Total Liabilities	71,990,355.60	72,750,484.11	72,105,078.72	74,503,055.22	74,599,061.13	75,681,966.92
Vertical Check (Assets/Liabilities)	-	-	-	-	-	-

NBFIs: Non-Bank Financial Institutions

Source : Central Bank of Liberia, Monrovia, Liberia.

MONEY AND BANKING

1.2b: Sectoral Balance Sheet of Other Depository Corporations - 2015

'Thousands of Liberian Dollars

	Jan-15	Feb-15	Mar-15	Apr-15
Assets				
Reserves	12,845,751.78	11,817,606.34	13,212,191.94	16,361,055.25
of which: Cash on Hand: Coins/LD Notes	1,776,125.74	1,456,902.40	1,402,756.74	1,424,079.43
Foreign Assets	17,644,499.10	18,849,342.10	17,160,978.62	16,244,598.58
Claims on General Government	3,476,075.52	3,414,740.52	3,464,182.38	2,274,296.40
Claims on Public Corporations	1,870,160.03	1,807,184.90	1,931,393.84	1,975,410.56
Claims on Private Sector	31,038,696.07	31,127,048.07	31,954,178.17	31,799,931.66
Claims on Central Bank of Liberia	1,068,900.18	1,068,900.18	1,068,901.18	1,068,900.18
Claims on NBFIs	124,949.46	122,163.55	129,101.43	129,681.70
Unclassified Assets	9,103,372.25	9,694,638.22	10,466,325.79	10,408,140.47
Total Assets	77,172,404.40	77,901,623.89	79,387,253.34	80,262,014.80
	Jan-15	Feb-15	Mar-15	Apr-15
Liabilities				
Demand Deposits	29,341,380.28	29,257,140.76	29,190,793.65	29,866,513.85
Time and Savings Deposits	16,513,604.72	17,584,310.83	18,503,790.23	18,238,109.43
Restricted Deposits	10,863.61	10,863.61	10,863.61	10,863.61
Bonds and Securities	-	-	-	-
Foreign Liabilities	2,614,207.28	2,695,723.58	3,109,710.29	3,075,654.47
Government Deposits	767,507.73	760,890.38	829,134.50	731,752.74
Liabilities to Central Bank of Liberia	1,922,591.52	1,932,796.77	1,933,001.77	1,933,061.77
Capital Accounts	13,686,761.65	13,741,025.61	14,229,382.49	14,246,796.55
Unclassified Liabilities	12,315,487.61	11,918,872.36	11,580,576.81	12,159,262.39
Total Liabilities	77,172,404.40	77,901,623.89	79,387,253.34	80,262,014.80
Vertical Check (Assets/Liabilities)	-	-	-	-

NBFIs: Non-Bank Financial Institutions

Source : Central Bank of Liberia, Monrovia, Liberia.

MONEY AND BANKING

CENTRAL BANK OF LIBERIA

1.3: Sectoral Balance Sheet of Central Bank of Liberia - 2013

'Thousands of Liberian Dollars

	Jan-13	Feb-13	Mar-13	Apr-13	May-13	Jun-13
Assets						
Foreign Assets	37,001,038.76	35,986,385.29	34,705,817.30	37,255,050.18	36,537,229.21	35,842,775.31
Claims on General Government	20,269,134.33	20,261,742.78	20,195,247.02	20,399,751.52	20,453,783.57	20,565,759.29
Claims on Public Corporations	-	-	-	-	-	-
Claims on Private Sector	137,721.91	143,160.71	159,281.00	169,720.51	174,061.28	181,387.56
Claims on Domestic Banks	2,374,154.53	2,331,420.31	2,312,672.80	2,366,428.65	2,387,481.08	2,535,104.41
Claims on NBFIs	-	-	-	-	-	-
Unclassified Assets	16,871,808.62	16,873,161.02	17,190,052.46	17,411,863.55	17,627,449.44	17,887,370.05
Total Assets	76,653,858.14	75,595,870.12	74,563,070.57	77,602,814.40	77,180,004.58	77,012,396.62
	Jan-13	Feb-13	Mar-13	Apr-13	May-13	Jun-13
Liabilities						
Reserve Money	22,518,201.72	22,413,209.42	23,262,309.31	23,066,952.62	23,832,824.22	21,946,297.89
Other Deposits	-	-	-	-	-	-
Restricted Reserves	18,781.00	18,781.00	18,781.00	18,781.00	18,781.00	18,781.00
Foreign Liabilities	20,514,583.88	20,518,459.95	20,514,369.38	20,818,290.87	21,048,373.91	21,054,077.22
Liabilities to General Government	4,635,255.51	3,854,854.26	2,121,131.48	4,792,498.35	3,171,859.54	4,448,427.95
Capital Accounts	16,104,924.25	15,979,543.51	15,836,029.20	16,076,717.69	15,997,219.66	16,368,852.57
Unclassified Liabilities	12,862,111.77	12,811,021.98	12,810,450.20	12,829,573.88	13,110,946.25	13,175,960.00
Total Liabilities	76,653,858.14	75,595,870.12	74,563,070.57	77,602,814.40	77,180,004.58	77,012,396.62
Vertical Check (Assets/Liabilities)	-	-	-	-	-	-

NBFIs: Non-Bank Financial Institutions

Source : Central Bank of Liberia, Monrovia, Liberia.

MONEY AND BANKING

CENTRAL BANK OF LIBERIA

1.3: Sectoral Balance Sheet of Central Bank of Liberia - 2013 Cont'd*'Thousands of Liberian Dollars*

	Jul-13	Aug-13	Sep-13	Oct-13	Nov-13	Dec-13
Assets						
Foreign Assets	34,819,051.70	36,091,161.30	36,699,588.47	36,998,755.62	36,926,774.87	40,709,460.53
Claims on General Government	20,822,542.99	21,336,110.39	21,464,502.24	21,721,285.94	21,849,677.79	21,776,461.49
Claims on Public Corporations	-	-	-	-	-	-
Claims on Private Sector	151,215.30	165,877.51	169,424.61	175,521.88	175,940.13	174,901.03
Claims on Domestic Banks	3,044,236.87	3,260,937.46	3,262,769.16	3,288,487.86	3,320,101.22	2,320,840.74
Claims on NBFIs	-	-	-	-	-	-
Unclassified Assets	18,331,191.85	18,727,267.62	18,823,738.61	19,039,860.84	19,173,865.73	19,388,052.76
Total Assets	77,168,238.71	79,581,354.28	80,420,023.08	81,223,912.14	81,446,359.75	84,369,716.55
	Jul-13	Aug-13	Sep-13	Oct-13	Nov-13	Dec-13
Liabilities						
Reserve Money	22,633,635.34	21,752,900.68	21,512,215.53	21,369,599.71	21,546,537.54	22,669,772.85
Other Deposits	-	-	-	-	-	-
Restricted Reserves	18,781.00	18,781.00	18,781.00	18,781.00	18,781.00	18,781.00
Foreign Liabilities	21,328,244.51	21,875,868.38	22,014,214.33	22,287,048.73	22,424,023.52	22,699,224.74
Liabilities to General Government	3,332,413.17	4,351,884.83	5,104,361.97	5,226,499.11	5,030,309.22	5,497,055.31
Capital Accounts	16,494,062.63	16,897,104.11	16,981,920.60	17,199,412.17	17,259,155.37	17,186,865.38
Unclassified Liabilities	13,361,102.05	14,684,815.28	14,788,529.66	15,122,571.43	15,167,553.09	16,298,017.27
Total Liabilities	77,168,238.71	79,581,354.28	80,420,023.08	81,223,912.14	81,446,359.74	84,369,716.55
Vertical Check (Assets/Liabilities)	-	-	-	-	-	-

NBFI: Non-Bank Financial Institutions

Source : Central Bank of Liberia, Monrovia, Liberia.

MONEY AND BANKING

CENTRAL BANK OF LIBERIA

1.3a: Sectoral Balance Sheet of Central Bank of Liberia - 2014*'Thousands of Liberian Dollars*

	Jan-14	Feb-14	Mar-14	Apr-14	May-14	Jun-14
Assets						
Foreign Assets	40,096,247.01	40,492,686.62	40,012,385.95	40,670,335.71	40,824,418.05	41,432,294.23
Claims on General Government	21,270,894.09	22,029,245.19	22,534,812.60	23,040,380.00	22,528,096.30	23,436,731.19
Claims on Public Corporations	-	-	-	-	-	-
Claims on Private Sector	177,137.51	178,126.64	178,607.76	239,351.45	264,760.42	280,038.50
Claims on Domestic Banks	2,255,199.46	2,268,282.41	2,294,943.44	2,304,278.92	2,431,782.05	2,539,251.99
Claims on NBFIs	-	-	-	-	-	-
Unclassified Assets	19,084,629.95	19,721,874.85	20,284,660.34	20,656,538.86	20,630,210.90	21,903,876.47
Total Assets	82,884,108.02	84,690,215.71	85,305,410.08	86,910,884.94	86,679,267.71	89,592,192.38
	Jan-14	Feb-14	Mar-14	Apr-14	May-14	Jun-14
Liabilities						
Reserve Money	21,838,456.21	21,982,959.03	21,745,353.04	22,558,302.78	22,890,483.17	21,430,090.78
Other Deposits	-	-	-	-	-	-
Restricted Reserves	18,781.00	18,781.00	18,781.00	-	-	-
Foreign Liabilities	22,148,973.08	22,974,592.72	23,525,833.43	24,074,753.26	23,808,759.17	24,982,219.02
Liabilities to General Government	6,458,500.13	5,989,735.97	3,040,480.57	3,263,882.11	4,669,998.66	6,062,345.82
Capital Accounts	16,568,196.22	17,178,382.48	17,539,265.66	17,840,014.41	17,459,055.17	18,366,979.21
Unclassified Liabilities	15,851,201.39	16,545,764.51	19,435,696.39	19,173,932.61	17,850,971.55	18,750,557.54
Total Liabilities	82,884,108.02	84,690,215.71	85,305,410.08	86,910,885.18	86,679,267.72	89,592,192.38
Vertical Check (Assets/Liabilities)	-	-	-	(0.24)	(0.00)	-

NBFI: Non-Bank Financial Institutions

Source : Central Bank of Liberia, Monrovia, Liberia.

MONEY AND BANKING

CENTRAL BANK OF LIBERIA

1.3a: Sectoral Balance Sheet of Central Bank of Liberia - 2014 - continues

'Thousands of Liberian Dollars

	Jul-14	Aug-14	Sep-14	Oct-14	Nov-14	Dec-14
Assets						
Foreign Assets	37,961,707.16	38,701,629.17	40,239,579.50	44,588,073.56	45,699,604.51	42,491,488.73
Claims on General Government	21,446,461.49	21,944,028.89	21,943,676.78	21,944,028.89	21,695,245.19	21,446,461.49
Claims on Public Corporations	-	-	-	-	-	-
Claims on Private Sector	265,595.01	277,853.96	281,154.02	288,090.58	290,726.73	263,099.35
Claims on Domestic Banks	2,271,580.97	2,345,909.29	2,359,454.61	2,345,456.22	2,366,266.20	2,371,929.85
Claims on NBFIs	-	-	-	-	-	-
Unclassified Assets	20,632,420.70	21,439,617.60	20,773,751.48	19,771,969.24	19,961,902.41	19,741,028.47
Total Assets	82,577,765.34	84,709,038.92	85,597,616.40	88,937,618.49	90,013,745.05	86,314,007.89
	Jul-14	Aug-14	Sep-14	Oct-14	Nov-14	Dec-14
Liabilities						
Reserve Money	18,723,675.42	18,924,945.73	20,158,969.73	20,436,735.69	21,529,638.46	23,655,840.68
Other Deposits	-	-	-	-	-	-
Restricted Reserves	-	-	-	-	-	-
Foreign Liabilities	22,773,964.78	23,326,028.32	22,410,576.73	22,410,576.73	22,145,378.71	21,880,180.69
Liabilities to General Government	6,444,545.91	7,508,626.30	8,594,714.09	11,560,210.71	12,436,513.77	8,553,018.93
Capital Accounts	15,984,336.54	15,833,093.97	15,657,503.09	16,671,853.84	16,208,284.25	15,748,551.87
Unclassified Liabilities	18,651,242.69	19,116,344.60	18,775,852.71	17,858,241.52	17,693,929.86	16,476,415.74
Total Liabilities	82,577,765.34	84,709,038.92	85,597,616.35	88,937,618.49	90,013,745.05	86,314,007.89
Vertical Check (Assets/Liabilities)	-	-	-	-	-	-

NBFIs: Non-Bank Financial Institutions

Source: Central Bank of Liberia, Monrovia, Liberia.

MONEY AND BANKING

CENTRAL BANK OF LIBERIA

1.3b: Sectoral Balance Sheet of Central Bank of Liberia - 2015

'Thousands of Liberian Dollars

	Jan-15	Feb-15	Mar-15	Apr-15
Assets				
Foreign Assets	45,252,759.58	49,026,393.28	47,305,959.80	45,212,007.14
Claims on General Government	21,944,028.89	21,944,028.89	21,944,028.89	21,944,028.89
Claims on Public Corporations	-	-	-	-
Claims on Private Sector	270,883.77	292,968.67	304,041.85	309,764.97
Claims on Domestic Banks	2,588,628.12	2,287,638.01	2,449,790.73	2,434,380.42
Claims on NBFIs	-	-	-	-
Unclassified Assets	20,428,280.71	20,540,866.58	20,649,286.57	20,799,159.82
Total Assets	90,484,581.08	94,091,895.43	92,653,107.85	90,699,341.24
	Jan-15	Feb-15	Mar-15	Apr-15
Liabilities				
Reserve Money	22,156,546.58	25,875,926.70	22,411,092.75	22,701,191.19
Other Deposits	-	-	-	-
Restricted Reserves	-	-	-	-
Foreign Liabilities	22,410,576.73	22,410,576.73	22,410,576.73	22,410,576.73
Liabilities to General Government	11,697,307.01	11,777,039.49	13,794,100.24	12,768,087.85
Capital Accounts	16,241,229.51	16,230,379.82	16,256,829.01	15,982,850.79
Unclassified Liabilities	17,978,921.25	17,797,972.68	17,780,509.12	16,836,634.68
Total Liabilities	90,484,581.08	94,091,895.43	92,653,107.85	90,699,341.24
Vertical Check (Assets/Liabilities)	-	-	-	-

NBFIs: Non-Bank Financial Institutions

Source: Central Bank of Liberia, Monrovia, Liberia.

MONEY AND BANKING

CENTRAL BANK OF LIBERIA

1.4: Commercial Banks' Loans By Economic Sector - 2013

Thousands of Liberian Dollars

Sector	Jan-13		Feb-13		Mar-13		Apr-13		May-13		Jun-13	
	L\$	%	L\$	%	L\$	%	L\$	%	L\$	%	L\$	%
1. Agriculture	1,170,892.88	5.8	1,184,695.68	5.8	1,279,791.94	6.4	1,265,158.52	5.7	1,201,317.60	5.4	1,009,886.94	4.4
1.1 Rubber	306,092.50	1.5	121,630.50	0.6	211,328.50	1.1	258,847.50	1.2	318,925.50	1.4	204,850.70	0.9
1.2 Forestry	202,113.38	1.0	346,091.87	1.7	349,287.44	1.7	283,827.02	1.3	205,263.10	0.9	163,043.44	0.7
1.3 Fishery	193,625.50	1.0	171,350.00	0.8	171,126.50	0.9	162,400.50	0.7	85,909.50	0.4	227,323.80	1.0
1.4 Others	469,061.50	2.3	545,623.31	2.7	548,049.50	2.7	560,083.50	2.5	591,219.50	2.6	414,669.00	1.8
2. Mining & Quarrying	154,193.50	0.8	127,771.50	0.6	151,978.00	0.8	127,904.00	0.6	162,606.00	0.7	170,224.96	0.7
2.1 Iron Ore	43,284.50	0.2	43,760.00	0.2	43,359.00	0.2	44,016.50	0.2	47,736.00	0.2	44,775.90	0.2
2.2 Quarrying	110,909.00	0.6	84,011.50	0.4	108,619.00	0.5	83,887.50	0.4	114,870.00	0.5	125,449.06	0.6
3. Manufacturing	321,187.50	1.6	351,431.00	1.7	419,155.00	2.1	421,969.50	1.9	406,215.00	1.8	372,393.62	1.6
4. Construction	1,649,209.65	8.2	1,807,881.00	8.8	1,859,562.00	9.3	2,692,566.50	12.2	2,373,114.50	10.6	2,209,556.72	9.7
4.1 Mortgage Loans	32,815.65	0.2	157,466.50	0.8	152,129.00	0.8	187,013.50	0.8	94,783.50	0.4	82,433.58	0.4
4.2 Home Improvement	133,280.50	0.7	4,842.50	0.0	68,912.50	0.3	12,608.50	0.1	190,561.50	0.9	11,174.84	0.0
4.3 Others	1,483,113.50	7.4	1,645,572.00	8.0	1,638,520.50	8.2	2,492,944.50	11.3	2,087,769.50	9.3	2,115,948.30	9.3
5. Trans., Storage & Comm.	1,334,353.00	6.7	1,489,083.73	7.3	1,714,390.68	8.5	1,965,857.12	8.9	1,745,686.77	7.8	1,330,533.88	5.8
5.1 Transportation	848,668.50	4.2	856,939.73	4.2	1,204,254.68	6.0	1,003,730.87	4.5	866,412.27	3.9	667,478.56	2.9
5.2 Storage	-	-	197,358.50	1.0	-	-	37.75	0.0	-	-	-	-
5.3 Communication	485,684.50	2.4	434,785.50	2.1	510,136.00	2.5	962,088.50	4.4	879,274.50	3.9	663,055.32	2.9
6. Trade, Hotel & Rest.	8,664,542.26	43.3	8,733,868.79	42.6	8,385,823.10	41.7	8,349,399.50	37.8	8,813,789.50	39.4	9,827,970.20	43.2
6.1 Diamond trade	40,602.50	0.2	47,905.19	0.2	47,382.00	0.2	45,300.00	0.2	52,249.50	0.2	60,390.06	0.3
6.2 Other trade	8,356,274.10	41.7	8,387,723.10	40.9	8,093,156.10	40.3	8,018,997.50	36.3	8,474,757.00	37.9	9,413,701.12	41.4
6.3 Hotels	236,209.00	1.2	265,902.50	1.3	212,872.50	1.1	193,297.00	0.9	216,108.00	1.0	278,410.58	1.2
6.4 Restaurants	31,456.67	0.2	32,338.00	0.2	32,412.50	0.2	91,805.00	0.4	70,675.00	0.3	75,468.44	0.3
7. Others	6,727,039.84	33.6	6,797,496.42	33.2	6,291,743.32	31.3	7,280,858.77	32.9	7,681,279.64	34.3	7,831,420.26	34.4
7.1 Services	2,241,520.00	11.2	1,904,575.00	9.3	1,776,205.00	8.8	1,960,127.00	8.9	1,975,280.50	8.8	2,218,616.56	9.8
7.2 Personal	2,039,422.50	10.2	2,643,798.00	12.9	2,759,426.50	13.7	2,718,102.00	12.3	2,904,465.50	13.0	2,728,103.20	12.0
7.3 GOL	77,736.50	0.4	71,406.00	0.3	85,787.50	0.4	119,632.00	0.5	100,564.00	0.4	81,483.56	0.4
7.4 Central Bank of Liberia	-	-	-	-	-	-	-	-	-	-	-	-
7.5 Public Corporations	365,380.50	1.8	389,551.00	1.9	363,210.00	1.8	403,287.00	1.8	378,824.00	1.7	390,909.86	1.7
7.6 Others	2,002,980.34	10.0	1,788,166.42	8.7	1,307,114.32	6.5	2,079,710.77	9.4	2,322,145.64	10.4	2,412,307.08	10.6
TOTAL	20,021,418.63	100.0	20,492,228.11	100.0	20,102,444.03	100.0	22,103,713.91	100.0	22,384,009.01	100.0	22,751,986.59	100.0

Source : Central Bank of Liberia, Monrovia, Liberia.

MONEY AND BANKING

CENTRAL BANK OF LIBERIA

1.4: Commercial Banks' Loans By Economic Sector - 2013 Cont'd

Thousands of Liberian Dollars

Sector	Jul-13		Aug-13		Sep-13		Oct-13		Nov-13		Dec-13	
	L\$	%	L\$	%	L\$	%	L\$	%	L\$	%	L\$	%
1. Agriculture	1,358,995.00	5.5	1,300,242.00	5.1	1,336,993.80	5.2	1,353,390.49	5.2	1,434,521.01	5.3	1,494,837.90	5.5
1.1 Rubber	268,996.00	1.1	155,105.00	0.6	230,383.20	0.9	231,701.67	0.9	229,918.98	0.9	232,379.93	0.9
1.2 Forestry	204,062.00	0.8	374,096.00	1.5	267,120.00	1.0	291,519.00	1.1	259,577.50	1.0	276,715.73	1.0
1.3 Fishery	230,098.00	0.9	161,544.00	0.6	124,457.60	0.5	135,861.48	0.5	181,663.50	0.7	247,335.00	0.9
1.4 Others	655,839.00	2.7	609,497.00	2.4	715,033.00	2.8	694,308.34	2.7	763,361.03	2.8	738,407.25	2.7
2. Mining & Quarrying	265,361.00	1.1	89,200.00	0.4	84,960.00	0.3	78,327.00	0.3	95,192.00	0.4	100,320.00	0.4
2.1 Iron Ore	45,338.00	0.2	50,006.00	0.2	5,360.00	0.0	5,103.00	0.0	4,401.00	0.0	3,712.50	0.0
2.2 Quarrying	220,023.00	0.9	39,194.00	0.2	79,600.00	0.3	73,224.00	0.3	90,791.00	0.3	96,607.50	0.4
3. Manufacturing	269,041.00	1.1	331,811.00	1.3	378,990.40	1.5	341,464.41	1.3	376,693.00	1.4	371,910.00	1.4
4. Construction	2,626,535.00	10.6	2,753,911.00	10.8	2,774,725.60	10.9	2,798,056.31	10.7	2,978,896.23	11.1	2,933,641.80	10.8
4.1 Mortgage Loans	82,848.00	0.3	85,542.00	0.3	89,520.00	0.4	102,060.00	0.4	115,159.50	0.4	102,382.50	0.4
4.2 Home Improvement	10,618.00	-	19,398.00	0.1	28,160.00	0.1	33,696.00	0.1	59,250.50	0.2	35,145.00	0.1
4.3 Others	2,533,069.00	10.3	2,648,971.00	10.4	2,657,045.60	10.4	2,662,300.31	10.2	2,804,486.23	10.4	2,796,114.30	10.3
5. Trans., Storage & Comm.	831,262.00	5.9	2,356,735.00	9.2	2,322,486.80	9.1	2,206,625.49	8.4	2,180,724.63	8.1	2,274,076.90	8.4
5.1 Transportation	763,165.00	3.1	593,048.00	2.3	736,670.00	2.9	665,499.00	2.5	671,778.50	2.5	680,955.50	2.5
5.2 Storage	-	-	-	-	-	-	-	-	-	-	-	-
5.3 Communication	68,097.00	2.8	1,763,687.00	6.9	1,585,816.80	6.2	1,541,126.49	5.9	1,508,946.13	5.6	1,593,121.40	5.9
6. Trade, Hotel & Rest.	9,811,638.00	39.6	9,715,245.00	38.0	9,799,259.00	38.3	10,012,921.00	38.2	10,184,350.00	37.8	10,860,881.00	40.0
6.1 Diamond trade	57,273.00	0.2	62,487.00	0.2	60,800.00	0.2	62,451.00	0.2	63,651.50	0.2	62,865.00	0.2
6.2 Other trade	9,345,497.00	37.8	9,240,676.00	36.2	9,348,245.00	36.6	9,618,803.00	36.7	9,825,102.50	36.5	10,503,244.50	38.7
6.3 Hotels	329,430.00	1.3	314,615.00	1.2	298,614.00	1.2	221,345.00	0.8	207,005.50	0.8	211,941.50	0.8
6.4 Restaurants	79,438.00	0.3	97,467.00	0.4	91,600.00	0.4	110,322.00	0.4	88,590.50	0.3	82,830.00	0.3
7. Others	8,930,869.00	36.2	8,979,479.00	35.2	8,865,244.00	34.7	9,405,443.45	35.9	9,689,331.00	36.0	9,133,697.50	33.6
7.1 Services	2,560,933.00	10.4	2,414,775.00	9.5	2,495,097.00	9.8	2,450,112.00	9.4	2,574,176.50	9.6	2,580,061.00	9.5
7.2 Personal	3,044,329.00	12.3	3,137,480.00	12.3	2,996,819.00	11.7	3,272,460.00	12.5	3,268,779.00	12.1	3,256,564.00	12.0
7.3 GOL	392,663.00	1.6	343,200.00	1.3	347,768.00	1.4	548,101.00	2.1	551,898.50	2.0	578,387.00	2.1
7.4 Central Bank of Liberia	-	-	42,692.00	0.2	-	-	-	-	-	-	-	-
7.5 Public Corporations	412,390.00	1.7	409,695.00	1.6	272,591.00	1.1	260,112.00	1.0	247,919.00	0.9	265,485.00	1.0
7.6 Others	2,520,554.00	10.2	2,631,637.00	10.3	2,752,969.00	10.8	2,874,658.45	11.0	3,046,558.00	11.3	2,453,200.50	9.0
TOTAL	24,711,696.00	100.0	25,526,623.00	100.0	25,562,659.60	100.0	26,196,228.15	100.0	26,939,707.86	100.0	27,169,365.10	100.0

Source: Central Bank of Liberia, Monrovia, Liberia.

MONEY AND BANKING

CENTRAL BANK OF LIBERIA

1.4a: Commercial Banks' Loans By Economic Sector - 2014 Cont'd
Thousands of Liberian Dollars

Sector	Jan-14		Feb-14		Mar-14		Apr-14		May-14		Jun-14	
	LS	%	LS	%	LS	%	LS	%	LS	%	LS	%
1. Agriculture	1,469,867.00	5.5	1,533,385.34	5.9	1,782,106.56	6.3	1,901,650.03	6.5	1,719,374.71	6	1,662,566.03	5.5
1.1 Rubber	232,147.55	0.9	237,308.15	0.9	254,169.72	0.9	318,791.63	1.1	263,843.04	0.9	279,322.73	0.9
1.2 Forestry	273,572.01	1.0	240,897.50	0.9	446,462.19	1.6	507,832.00	1.7	486,061.13	1.7	543,094.93	1.8
1.3 Fishery	239,568.00	0.9	370,874.00	1.4	390,272.50	1.4	391,315.00	1.3	392,078.80	1.4	332,423.00	1.1
1.4 Others	724,579.45	2.7	684,305.69	2.6	691,202.15	2.4	683,711.41	2.4	577,391.75	2.0	507,725.38	1.7
2. Mining & Quarrying	93,219.00	0.3	95,273.50	0.4	134,406.00	0.5	131,425.00	0.5	128,971.50	0	124,980.50	0.4
2.1 Iron Ore	2,898.00	0.0	2,254.50	0.0	7,866.00	0.0	10,587.50	0.0	10,293.50	0.0	3,439.00	0.0
2.2 Quarrying	90,321.00	0.3	93,019.00	0.4	126,540.00	0.4	120,837.50	0.4	118,678.00	0.4	121,541.50	0.4
3. Manufacturing	364,504.00	1.4	262,538.20	1.0	545,043.92	1.9	541,339.88	1.9	578,670.81	2.0	581,277.51	1.9
4. Construction	2,775,886.53	10.3	2,928,776.96	11.2	4,419,157.23	15.6	4,557,587.12	15.7	4,434,585.98	15	4,606,375.63	15.3
4.1 Mortgage Loans	101,913.00	0.4	114,740.69	0.4	504,452.50	1.8	547,934.00	1.9	963,331.52	3.3	905,730.95	3.0
4.2 Home Improvement	16,180.50	0.1	10,521.00	0.0	96,615.00	0.3	82,337.50	0.3	8,217.50	0.0	5,882.50	0.0
4.3 Others	2,657,793.03	9.9	2,803,515.27	10.7	3,818,089.73	13.5	3,927,315.62	13.5	3,463,036.96	12.0	3,694,762.18	12.3
5. Trans., Storage & Comm.	2,191,463.28	8.2	2,135,407.83	8.2	2,394,505.08	8.5	2,443,145.88	8.4	2,366,040.22	8	2,465,197.11	8.2
5.1 Transportation	677,166.00	2.5	680,356.75	2.6	690,300.50	2.4	695,432.13	2.4	667,015.00	2.3	674,306.11	2.2
5.2 Storage	-	-	-	-	-	0.0	-	-	-	0.0	-	0.0
5.3 Communication	1,514,297.28	5.6	1,455,051.08	5.6	1,704,203.58	6.0	1,747,713.75	6.0	1,699,025.22	5.9	1,790,891.00	6.0
6. Trade, Hotel & Rest.	10,896,021.50	40.5	10,184,662.13	39.0	12,788,116.85	45.2	12,687,110.43	43.7	12,515,159.99	43	12,820,169.45	42.7
6.1 Diamond trade	62,629.00	0.2	-	-	67,801.50	0.2	68,337.50	0.2	66,432.00	0.2	70,137.50	0.2
6.2 Other trade	10,413,703.00	38.7	9,801,928.30	37.5	12,160,473.50	43.0	12,043,860.53	41.5	11,993,982.07	41.6	12,253,882.10	40.8
6.3 Hotels	208,699.00	0.8	200,947.65	0.8	336,418.50	1.2	326,774.09	1.1	263,106.64	0.9	314,069.94	1.0
6.4 Restaurants	210,990.50	0.8	181,786.18	0.7	223,423.35	0.8	248,138.31	0.9	191,638.49	0.7	182,079.91	0.6
7. Others	9,091,834.00	33.8	8,971,799.10	34.4	6,212,675.53	22.0	6,773,851.61	23.3	7,081,171.59	25	7,788,929.80	25.9
7.1 Services	2,600,625.00	9.7	2,453,959.21	9.4	1,648,415.17	5.8	1,590,958.03	5.5	1,651,626.39	5.7	1,778,461.72	5.9
7.2 Personal	3,148,304.50	11.7	3,118,140.00	11.9	2,709,835.00	9.6	2,844,919.50	9.8	2,840,772.50	9.9	2,954,563.50	9.8
7.3 GOL	569,523.00	2.1	583,649.50	2.2	586,102.50	2.1	593,775.00	2.0	585,691.50	2.0	614,947.50	2.0
7.4 Central Bank of Liberia	-	-	-	-	-	-	-	-	-	0.0	-	0.0
7.5 Public Corporations	312,561.00	1.2	354,617.50	1.4	215,620.50	0.8	264,239.50	0.9	269,474.50	0.9	281,350.50	0.9
7.6 Others	2,460,820.50	9.2	2,461,432.89	9.4	1,052,702.36	3.7	1,479,959.59	5.1	1,733,606.70	6.0	2,159,606.59	7.2
TOTAL	26,882,795.31	100.0	26,111,843.04	100.0	28,276,011.16	100.0	29,036,109.93	100.0	28,823,974.78	100.0	30,049,496.02	100.0

Source: Central Bank of Liberia, Monrovia, Liberia.

Sector	Jul-14		Aug-14		Sep-14		Oct-14		Nov-14		Dec-14	
	LS	%	LS	%	LS	%	LS	%	LS	%	LS	%
1. Agriculture	1,775,051.00	6.4	1,814,661.00	6.4	1,810,421.77	6.3	2,402,780.04	8.5	1,898,620.89	6.7	1,869,181.78	6.8
1.1 Rubber	487,782.00	1.8	546,494.00	1.9	638,692.30	2.2	473,231.78	1.7	538,062.64	1.9	534,345.88	1.9
1.2 Forestry	397,495.00	1.4	186,154.00	0.7	219,186.18	0.8	307,993.21	1.1	364,466.65	1.3	332,765.40	1.2
1.3 Fishery	291,035.00	1.0	349,016.00	1.2	231,474.50	0.8	216,164.00	0.8	282,692.00	1.0	281,481.00	1.0
1.4 Others	598,739.00	2.2	732,998.00	2.6	721,068.79	2.5	1,405,391.06	5.0	713,399.61	2.5	720,589.50	2.6
2. Mining & Quarrying	126,803.00	0.5	129,285.00	0.5	129,961.00	0.5	128,355.50	0.5	132,347.50	0.5	177,210.00	0.6
2.1 Iron Ore	6,105.00	0.0	6,422.00	0.0	6,506.50	0.0	6,591.00	0.0	6,596.50	0.0	6,517.50	0.0
2.2 Quarrying	120,698.00	0.4	122,863.00	0.4	123,454.50	0.4	121,764.50	0.4	125,751.00	0.4	170,692.50	0.6
3. Manufacturing	586,829.00	2.1	578,361.00	2.1	647,918.11	2.3	613,089.77	2.2	557,262.65	2.0	526,910.08	1.9
4. Construction	4,546,042.00	16.4	4,346,709.00	15.4	5,185,709.30	18.2	4,878,561.49	17.3	4,788,269.90	16.9	4,727,719.67	17.2
4.1 Mortgage Loans	838,028.00	3.0	860,976.00	3.1	1,443,187.78	5.1	661,881.00	2.3	728,807.80	2.6	682,066.47	2.5
4.2 Home Improvement	22,358.00	0.1	30,843.00	0.1	27,124.50	0.1	12,591.00	0.0	41,833.50	0.1	41,332.50	0.2
4.3 Road Construction	1,243,569.00	4.5	1,291,105.00	4.6	1,389,956.84	4.9	1,665,089.64	5.9	1,234,213.50	4.4	1,614,289.00	5.9
4.4 Others	2,442,088.00	8.8	2,163,786.00	7.7	2,325,440.19	8.1	2,539,000.00	9.0	2,783,415.11	9.8	2,890,031.70	8.7
5. Trans., Storage & Comm.	2,275,664.00	8.2	2,313,363.00	8.2	2,338,778.41	8.2	2,230,789.68	7.9	2,250,830.38	7.9	2,032,301.28	7.4
5.1 Transportation	600,826.00	2.2	611,889.00	2.2	635,387.19	2.2	637,801.82	2.3	601,744.05	2.1	560,384.75	2.0
5.2 Storage	-	-	-	-	-	-	-	-	-	0	-	0
5.3 Communication	1,674,838.00	6.0	1,701,475.00	6.0	1,703,391.22	6.0	1,592,987.86	5.6	1,649,086.33	5.8	1,471,916.53	5.4
6. Trade, Hotel & Rest.	12,310,358.00	44.3	12,024,231.00	42.7	12,254,308.66	42.9	11,406,442.03	40.4	12,391,270.18	43.7	12,039,093.50	43.8
6.1 Diamond trade	63,139.00	0.2	65,181.00	0.2	69,196.21	0.2	67,963.35	0.2	67,855.44	0.2	65,530.58	0.2
6.2 Other trade	11,802,442.00	42.5	11,553,052.00	41.0	11,794,905.38	41.3	10,896,038.35	38.6	11,838,538.43	41.8	11,505,007.22	41.8
6.3 Hotels	292,242.00	1.1	275,077.00	1.0	275,176.62	1.0	288,550.88	1.0	340,640.79	1.2	326,478.31	1.2
6.4 Restaurants	152,536.00	0.5	130,922.00	0.5	115,030.46	0.4	153,889.46	0.5	144,235.53	0.5	142,077.41	0.5
7. Others	6,156,183.00	22.2	6,958,778.00	24.7	6,168,425.92	21.6	6,564,847.20	23.3	6,310,933.76	22.3	6,127,194.71	22.3
7.1 Services	1,673,155.00	6.0	1,650,853.00	5.9	1,641,903.75	5.8	1,920,501.36	6.8	1,754,117.00	6.2	1,733,309.06	6.3
7.2 Personal	2,838,326.00	10.2	2,894,815.00	10.3	2,816,674.54	9.9	2,732,917.28	9.7	2,808,873.36	9.9	2,665,800.33	9.69
7.3 GOL	543,758.00	2.0	566,826.00	2.0	617,786.00	2.2	619,818.00	2.2	610,319.00	2.2	614,413.00	2.2
7.4 Central Bank of Liberia	-	-	-	-	-	-	-	-	-	54,862.50	0.2	
7.5 Public Corporations	257,007.00	0.9	254,413.00	0.9	294,181.00	1.0	294,246.00	1.0	237,543.50	0.8	292,912.00	1.1
7.6 Others	843,939.00	3.0	1,591,871.00	5.7	797,880.63	2.8	997,364.57	3.5	900,080.90	3.2	765,897.83	2.8
TOTAL	27,776,930.00	100.0	28,165,388.00	100.0	28,535,523.16	100.0	28,224,865.71	100.0	28,329,535.24	100.0	27,499,611.01	100.0

Source: Central Bank of Liberia, Monrovia, Liberia.

MONEY AND BANKING

1.4b: Commercial Banks' Loans By Economic Sector - 2015

Thousands of Liberian Dollars

Source : Central Bank of Liberia, Monrovia, Liberia.

Sector	Jan-15		Feb-15		Mar-15		Apr-15	
	L\$	%	L\$	%	L\$	%	L\$	%
1. Agriculture	1,777,429.82	6.3	1,681,963.15	6.0	2,062,248.30	7.1	2,007,063.63	7.0
1.1 Rubber	535,187.48	1.9	472,426.82	1.7	584,734.86	2.0	548,898.96	1.9
1.2 Forestry	330,354.44	1.2	348,055.50	1.2	465,541.77	1.6	434,459.29	1.5
1.3 Fishery	190,716.50	0.7	170,605.50	0.6	218,179.00	0.8	266,175.00	0.9
1.4 Others	721,171.41	2.6	690,875.33	2.5	793,792.67	2.7	757,530.39	2.6
2. Mining & Quarrying	189,195.50	0.7	179,140.00	0.6	187,674.50	0.6	206,518.00	0.7
2.1 Iron Ore	6,844.50	0.0	6,929.00	0.0	7,013.50	0.0	7,098.00	0.0
2.2 Quarrying	182,351.00	0.6	172,211.00	0.6	180,661.00	0.6	199,420.00	0.7
3. Manufacturing	742,579.94	2.6	697,669.18	2.5	633,388.02	2.2	563,954.29	2.0
4. Construction	4,595,675.58	16.3	4,479,554.76	16.0	4,794,920.41	16.5	4,697,317.97	16.3
4.1 Mortgage Loans	756,608.37	2.7	823,328.33	2.9	841,995.57	2.9	815,073.52	2.8
4.2 Home Improvement	-	-	3,887.00	0.0	-	-	4,225.00	0.0
4.3 Road Construction	1,638,348.00	5.8	1,219,862.50	4.4	1,575,183.50	5.4	1,472,315.50	5.1
4.4 Others	2,200,719.21	7.8	2,432,476.93	8.7	2,377,741.34	8.2	2,405,703.95	8.3
5. Trans., Storage & Comm.	2,237,710.00	7.9	2,249,469.79	8.0	2,224,256.42	7.6	2,539,358.00	8.8
5.1 Transportation	603,470.92	2.1	624,241.22	2.2	609,904.10	2.1	593,007.00	2.1
5.2 Storage	-	-	-	-	-	-	-	-
5.3 Oil & Gas	-	-	-	-	-	-	336,056.50	1.2
5.4 Communication	1,634,239.08	5.8	1,625,228.57	5.8	1,614,352.32	5.5	1,610,294.49	5.6
6. Trade, Hotel & Rest.	12,424,968.73	44.1	12,406,546.88	44.3	12,769,375.09	43.9	12,108,935.54	42.0
6.1 Diamond trade	64,012.13	0.2	66,443.20	0.2	68,401.06	0.2	66,639.24	0.2
6.2 Other trade	11,835,487.65	42.0	11,808,530.43	42.2	12,160,224.90	41.8	11,481,324.85	39.8
6.3 Hotels	396,303.21	1.4	403,812.84	1.4	394,427.48	1.4	417,053.88	1.4
6.4 Restaurants	129,165.74	0.5	127,760.42	0.5	146,321.65	0.5	143,917.58	0.5
7. Others	6,220,417.92	22.1	6,317,408.18	22.6	6,416,612.04	22.1	6,713,439.72	23.3
7.1 Services	1,699,833.16	6.0	1,676,956.95	6.0	1,866,426.41	6.4	1,557,680.54	5.4
7.2 Personal	2,685,830.78	9.5	2,578,694.24	9.2	2,607,420.79	9.0	2,639,688.96	9.2
7.3 GOL	609,577.50	2.2	686,305.50	2.5	607,894.00	2.1	599,649.00	2.1
7.4 Central Bank of Liberia	-	-	-	-	-	-	-	-
7.5 Public Corporations	300,010.00	1.1	306,005.00	1.1	303,713.00	1.0	297,614.50	1.0
7.6 Others	925,166.48	3.3	1,069,446.49	3.8	1,031,157.85	3.5	1,618,806.72	5.6
TOTAL	28,187,977.49	100.0	28,011,751.92	100.0	29,088,474.77	100.0	28,836,586.76	100.0

Source: Central Bank of Liberia, Monrovia, Liberia.

MONEY AND BANKING

1.5: Commercial Banks' Interest Rates: 2013-2015

CENTRAL BANK OF LIBERIA

2013	Jan-13	Feb-13	Mar-13	Apr-13	May-13	Jun-13
Average Lending Rate	13.7	13.5	13.0	13.7	13.2	13.6
Average Personal Loan Rate	14.8	13.0	13.2	13.9	14.2	13.9
Average Mortgage Rate	15.0	14.0	12.0	13.9	15.0	14.3
Average Time Deposit Rate	4.2	3.9	3.6	3.9	3.8	3.9
Average Savings Rate	2.0	2.0	2.0	2.1	2.0	2.0
Average Rate on CDs	3.0	3.0	3.0	2.5	3.0	2.0

	Jul-13	Aug-13	Sep-13	Oct-13	Nov-13	Dec-13
Average Lending Rate	13.5	13.2	13.5	13.5	13.7	13.7
Average Personal Loan Rate	14.0	14.0	14.0	14.0	14.1	14.0
Average Mortgage Rate	14.2	14.2	15.0	14.2	14.3	14.3
Average Time Deposit Rate	3.9	3.7	3.8	3.8	4.4	3.6
Average Savings Rate	2.0	2.0	2.0	2.0	2.0	2.0
Average Rate on CDs	3.0	3.0	3.0	3.0	3.0	2.5

2014	Jan-14	Feb-14	Mar-14	Apr-14	May-14	Jun-14
Average Lending Rate	13.7	13.5	13.7	13.4	13.3	13.7
Average Personal Loan Rate	14.0	14.0	14.0	14.0	14.0	14.0
Average Mortgage Rate	14.2	15.0	14.3	14.2	14.2	14.3
Average Time Deposit Rate	4.0	3.8	3.8	4.2	4.0	4.5
Average Savings Rate	2.0	2.0	2.0	2.0	2.0	2.0
Average Rate on CDs	3.0	2.5	3.0	2.0	2.0	2.0

	Jul-14	14-Aug	Sep-14	Oct-14	Nov-14	Dec-14
Average Lending Rate	13.4	13.4	13.3	13.6	13.5	13.6
Average Personal Loan Rate	14.0	13.4	14.0	14.1	14.0	14.1
Average Mortgage Rate	14.9	12.0	15.0	14.3	14.4	14.2
Average Time Deposit Rate	4.4	4.0	3.9	4.6	4.4	4.4
Average Savings Rate	2.0	2.0	2.0	2.0	2.0	2.0
Average Rate on CDs	2.0	2.0	2.0	2.0	2.0	2.5

2015	Jan-15	Feb-15	Mar-15	Apr-15
Average Lending Rate	13.6	13.7	13.7	13.3
Average Personal Loan Rate	14.1	14.2	14.1	14.1
Average Mortgage Rate	14.4	14.2	14.4	14.4
Average Time Deposit Rate	4.0	3.9	3.8	3.7
Average Savings Rate	2.0	2.0	2.0	2.0
Average Rate on CDs	2.0	2.0	2.0	2.0

Note: CDs-Certificate of Deposits

Source : Central Bank of Liberia, Monrovia, Liberia.

MONEY AND BANKING

CENTRAL BANK OF LIBERIA

1.6: Liberian Dollar Exchange Rates - Period Averages: 2013- 2015
(Liberian dollar per US dollar)

Period 2013	Large bills		
	Buy	Sell	Middle ²
Jan	73.5	74.5	74.0
Feb	74.0	75.0	74.5
Mar	74.0	75.0	74.5
Apr	74.5	75.5	75.0
May	75.1	76.1	75.6
Jun	76.0	77.0	76.5
Jul	76.6	77.6	77.1
Aug	78.1	79.1	78.6
Sep	79.1	80.1	79.6
Oct	80.1	81.1	80.6
Nov	80.5	81.5	81.0
Dec	81.4	82.4	81.9
Quarter 1	73.8	74.8	74.3
Quarter 2	75.2	76.2	75.7
Quarter 3	77.9	78.9	78.4
Quarter 4	80.6	81.6	81.1

Period 2014	Large bills		
	Buy	Sell	Middle ²
Jan	83.1	84.1	83.6
Feb	80.9	81.9	81.4
Mar	83.9	84.9	84.4
Apr	86.1	87.1	86.6
May	86.1	87.1	86.6
Jun	88.7	89.7	89.2
Jul	87.5	88.5	88.0
Aug	82.4	83.4	82.9
Sep	84.0	85.0	84.5
Oct	84.0	85.0	84.5
Nov	83.3	84.3	83.8
Dec	82.1	83.1	82.6
Quarter 1	82.6	83.6	83.1
Quarter 2	87.0	88.0	87.5
Quarter 3	84.6	85.6	85.1
Quarter 4	83.1	84.1	83.6

Period 2015	Large bills		
	Buy	Sell	Middle ²
Jan	83.6	84.6	84.1
Feb	84.0	85.0	84.5
Mar	84.0	85.0	84.5
Apr	84.0	85.0	84.5
Quarter 1	83.9	84.9	84.4

²Average of buying and selling rates.

Source : Central Bank of Liberia, Monrovia, Liberia.

MONEY AND BANKING**CENTRAL BANK OF LIBERIA****1.6a: Liberian Dollar Exchange Rates - End of Period: 2013 - 2015***(Liberian dollars per US dollar)*

Months	2013	2014	2015
Jan	74.5	80.5	84.5
Feb	74.5	83.5	84.5
Mar	74.5	85.5	84.5
Apr	75.5	87.5	84.5
May	76.5	86.5	
Jun	76.5	90.5	
Jul	77.5	82.5	
Aug	79.5	84.5	
Sep	80.0	84.5	
Oct	81.0	84.5	
Nov	81.5	83.5	
Dec	82.5	82.5	

Source : Central Bank of Liberia, Monrovia, Liberia.

MONEY AND BANKING

CENTRAL BANK OF LIBERIA

1.6b: Liberian Dollar Exchange Rates Jan.-Feb., 2015

(Liberian dollar per US dollar)

Period	Large bills ¹			Period	Large bills ¹		
	Buy	Sell	Middle ²		Buy	Sell	Middle ²
Jan				Feb			
1	83.0	84.0	83.5	2	84.0	85.0	84.5
2	83.0	84.0	83.5	3	84.0	85.0	84.5
3	83.0	84.0	83.5	4	84.0	85.0	84.5
5	83.0	84.0	83.5	5	84.0	85.0	84.5
6	83.0	84.0	83.5	6	84.0	85.0	84.5
7	83.0	84.0	83.5	7	84.0	85.0	84.5
8	83.0	84.0	83.5	9	84.0	85.0	84.5
9	83.0	84.0	83.5	10	84.0	85.0	84.5
10	83.0	84.0	83.5	11	84.0	85.0	84.5
12	83.0	84.0	83.5	12	84.0	85.0	84.5
13	84.0	85.0	84.5	13	84.0	85.0	84.5
14	84.0	85.0	84.5	14	84.0	85.0	84.5
15	84.0	85.0	84.5	16	84.0	85.0	84.5
16	84.0	85.0	84.5	17	84.0	85.0	84.5
17	84.0	85.0	84.5	18	84.0	85.0	84.5
19	84.0	85.0	84.5	19	84.0	85.0	84.5
20	84.0	85.0	84.5	20	84.0	85.0	84.5
21	84.0	85.0	84.5	21	84.0	85.0	84.5
22	84.0	85.0	84.5	23	84.0	85.0	84.5
23	84.0	85.0	84.5	24	84.0	85.0	84.5
24	84.0	85.0	84.5	25	84.0	85.0	84.5
26	84.0	85.0	84.5	26	84.0	85.0	84.5
27	84.0	85.0	84.5	27	84.0	85.0	84.5
28	84.0	85.0	84.5	28	84.0	85.0	84.5
29	84.0	85.0	84.5				
30	84.0	85.0	84.5				
31	84.0	85.0	84.5				
Period Average	83.6	84.6	84.1	Period Average	84.0	85.0	84.5

1. US dollar bank notes of denominations 5 and higher.

2. Average of buying and selling rates.

Source: Central Bank of Liberia, Monrovia, Liberia.

MONEY AND BANKING

CENTRAL BANK OF LIBERIA

1.6c: Liberian Dollar Exchange Rates Mar.-Apr., 2015

(Liberian dollar per US dollar)

Period	Large bills ¹			Period	Large bills ¹		
	Buy	Sell	Middle ²		Buy	Sell	Middle ²
Mar				Apr			
2	84.0	85.0	84.5	1	84.0	85.0	84.5
3	84.0	85.0	84.5	2	84.0	85.0	84.5
4	84.0	85.0	84.5	3	84.0	85.0	84.5
5	84.0	85.0	84.5	4	84.0	85.0	84.5
6	84.0	85.0	84.5	6	84.0	85.0	84.5
7	84.0	85.0	84.5	7	84.0	85.0	84.5
9	84.0	85.0	84.5	8	84.0	85.0	84.5
10	84.0	85.0	84.5	9	84.0	85.0	84.5
11	84.0	85.0	84.5	10	84.0	85.0	84.5
12	84.0	85.0	84.5	11	84.0	85.0	84.5
13	84.0	85.0	84.5	13	84.0	85.0	84.5
14	84.0	85.0	84.5	14	84.0	85.0	84.5
16	84.0	85.0	84.5	15	84.0	85.0	84.5
17	84.0	85.0	84.5	16	84.0	85.0	84.5
18	84.0	85.0	84.5	17	84.0	85.0	84.5
19	84.0	85.0	84.5	18	84.0	85.0	84.5
20	84.0	85.0	84.5	20	84.0	85.0	84.5
21	84.0	85.0	84.5	21	84.0	85.0	84.5
23	84.0	85.0	84.5	22	84.0	85.0	84.5
24	84.0	85.0	84.5	23	84.0	85.0	84.5
25	84.0	85.0	84.5	24	84.0	85.0	84.5
26	84.0	85.0	84.5	25	84.0	85.0	84.5
27	84.0	85.0	84.5	27	84.0	85.0	84.5
28	84.0	85.0	84.5	28	84.0	85.0	84.5
30	84.0	85.0	84.5	29	84.0	85.0	84.5
31	84.0	85.0	84.5	30	84.0	85.0	84.5
Period Average	84.0	85.0	84.5	Period Average	84.0	85.0	84.5

1. US dollar bank notes of denominations 5 and higher.

2. Average of buying and selling rates.

Source: Central Bank of Liberia, Monrovia, Liberia.

MONEY AND BANKING

CENTRAL BANK OF LIBERIA

1.7: Commercial Banks' Inflows and Outflows: 2013 - 2015

(Thousands of United States Dollars)

Commercial Banks' Inflows and Outflows - 2013

	Jan-13	Feb-13	Mar-13	Apr-13	May-13	Jun-13	Jan-Jun Total
Inflows	53,961.00	53,326.00	50,218.00	65,090.00	89,852.00	80,600.00	393,047.00
Outflows	69,933.00	63,393.00	88,683.00	84,801.00	125,667.00	151,880.00	584,357.00

Commercial Banks' Inflows and Outflows	Jul-13	Aug-13	Sep-13	Oct-13	Nov-13	Dec-13	Jul-Dec Total	Grand Total
Inflows	75,643.00	57,598.00	72,761.00	102,556.00	92,998.00	146,032.00	547,588.00	940,635.00
Outflows	108,467.00	49,621.00	125,275.00	116,859.00	88,483.00	127,529.00	616,234.00	1,200,591.00

Commercial Banks' Inflows and Outflows - 2014

	Jan-14	Feb-14	Mar-14	Apr-14	May-14	Jun-14	Jan-Jun Total
Inflows	110,781.00	103,834.00	95,772.13	110,441.26	112,206.00	92,062.28	625,096.67
Outflows	182,196.00	144,044.00	102,746.02	144,345.93	133,686.00	129,759.10	836,777.05

Commercial Banks' Inflows and Outflows - 2014	Jul-14	Aug-14	Sep-14	Oct-14	Nov-14	Dec-14	Jul-Dec Total	Grand Total
Inflows	109,488.00	110,157.00	154,222.83	126,719.09	113,032.88	165,940.94	779,560.74	1,404,657.40
Outflows	139,974.00	139,281.00	115,570.16	112,848.37	134,537.00	131,951.00	774,161.53	1,610,938.58

Commercial Banks' Inflows and Outflows - 2015	Jan-15	Feb-15	Mar-15	Apr-15
Inflows	147,527.00	139,876.00	161,846.00	156,082.01
Outflows	142,683.00	95,256.00	150,075.00	137,172.32

Source : Central Bank of Liberia, Monrovia, Liberia.

MONEY AND BANKING

CENTRAL BANK OF LIBERIA

1.8 Central Bank of Liberia Fx Auction - 2013

Auction	Date	FX Offered for sale by CBL (US\$)	Auction Rate L\$/US	Total Purchased US\$	No. of Accepted Bids	No. of Rejected Bids	Value of Rejected Bids (US\$)	Over/(Under) Subscription (US\$)	Total Value of Bids Submitted by Banks/FX Bureaux
344	2-Jan-13	500,000.00	72.0	500,000.00	51	-	25,000.00	3,160,600.00	3,660,600.00
SPECIAL WINDOW	3-Jan-13	500,000.00	72.0	500,000.00	-	-	-	-	0.00
345	9-Jan-13	500,000.00	72.5	500,000.00	40	23	185,768.00	4,448,668.00	4,948,668.00
SPECIAL WINDOW	9-Jan-13	500,000.00	72.0	500,000.00	-	-	-	-	-
346	16-Jan-13	1,000,000.00	72.9	1,000,000.00	48	19	39,137.00	4,431,317.00	5,431,317.00
SPECIAL WINDOW	16-Jan-13	912,500.00	72.5	912,500.00	-	-	-	-	-
SPECIAL WINDOW	17-Jan-13	87,500.00	72.9	87,500.00	-	-	-	-	-
347	23-Jan-13	1,500,000.00	73.0	1,500,000.00	65	3	-	4,085,420.00	5,585,420.00
SPECIAL WINDOW	23-Jan-13	729,900.00	72.9	729,900.00	-	-	-	-	-
SPECIAL WINDOW	24-Jan-13	270,100.00	73.0	270,100.00	-	-	-	-	-
348	30-Jan-13	1,500,000.00	73.0	1,500,000.00	75	-	-	3,868,420.00	5,368,420.00
SPECIAL WINDOW	30-Jan-13	1,000,000.00	73.0	1,000,000.00	-	-	-	-	0.00
349	6-Feb-13	1,500,000.00	73.0	1,500,000.00	79	-	92,322.63	4,451,947.80	5,951,947.80
SPECIAL WINDOW	6-Feb-13	1,000,000.00	73.0	1,000,000.00	-	-	-	-	-
350	13-Feb-13	1,000,000.00	73.4	1,000,000.00	43	15	575,000.00	3,903,500.00	4,903,500.00
SPECIAL WINDOW	13-Feb-13	1,000,000.00	73.4	1,000,000.00	-	-	-	-	-
351	20-Feb-13	1,250,000.00	73.2	1,250,000.00	74	-	118,957.35	4,863,167.35	6,113,167.35
SPECIAL WINDOW	20-Feb-13	1,000,000.00	73.2	1,000,000.00	-	-	-	-	-
352	27-Feb-13	1,250,000.00	73.1	1,250,000.00	68	-	380,000.00	4,779,750.00	6,029,750.00
SPECIAL WINDOW	27-Feb-13	750,000.00	73.1	750,000.00	-	-	-	-	-
SPECIAL WINDOW	6-Mar-13	1,000,000.00	73.1	1,000,000.00	-	-	-	-	-
353	6-Mar-13	1,500,000.00	73.1	1,500,000.00	65	-	380,000.00	3,690,200.00	5,190,200.00
SPECIAL WINDOW	14-Mar-13	750,000.00	73.3	750,000.00	-	-	-	-	-
354	14-Mar-13	1,250,000.00	73.3	1,250,000.00	58	-	137,000.00	4,723,700.00	5,973,700.00
SPECIAL WINDOW	20-Mar-13	750,000.00	73.3	750,000.00	-	-	-	-	-
355	20-Mar-13	1,250,000.00	73.3	1,250,000.00	70	-	50,000.00	5,335,070.00	6,585,070.00
SPECIAL WINDOW	27-Mar-13	750,000.00	73.6	750,000.00	-	-	-	-	-
356	27-Mar-13	1,250,000.00	73.6	1,250,000.00	52	21	55,000.00	5,633,400.00	6,883,400.00
SPECIAL WINDOW	3-Apr-13	1,250,000.00	73.8	1,250,000.00	55	12	485,000.00	5,481,465.00	6,731,465.00
357	3-Apr-13	750,000.00	73.8	750,000.00	-	-	-	-	-
SPECIAL WINDOW	10-Apr-13	1,250,000.00	73.9	1,250,000.00	72	7	150,000.00	5,625,500.00	6,875,500.00
358	10-Apr-13	750,000.00	73.9	750,000.00	-	-	-	-	-
SPECIAL WINDOW	17-Apr-13	1,250,000.00	74.0	1,250,000.00	74	-	811,711.45	6,045,873.45	7,295,873.45
359	17-Apr-13	750,000.00	74.0	750,000.00	-	-	-	-	-
SPECIAL WINDOW	24-Apr-13	1,250,000.00	74.0	1,250,000.00	72	-	164,000.00	5,632,397.50	6,882,397.50
360	24-Apr-13	750,000.00	74.0	750,000.00	-	-	-	-	-
SPECIAL WINDOW	24-Apr-13	750,000.00	74.0	750,000.00	-	-	-	-	-
361	1-May-13	1,250,000.00	74.0	1,250,000.00	81	-	358,760.10	5,988,300.00	7,238,300.10
SPECIAL WINDOW	1-May-13	750,000.00	74.0	750,000.00	-	-	-	-	-
362	8-May-13	1,250,000.00	74.5	1,250,000.00	65	19	-	6,164,674.00	7,414,674.00
SPECIAL WINDOW	8-May-13	750,000.00	74.5	750,000.00	-	-	-	-	-
363	15-May-13	1,250,000.00	74.5	1,250,000.00	78	1	-	6,093,300.00	7,343,300.00
SPECIAL WINDOW	15-May-13	750,000.00	74.5	750,000.00	-	-	-	-	-
364	22-May-13	1,250,000.00	74.8	1,250,000.00	76	8	50,400.00	5,959,140.00	7,209,140.00
SPECIAL WINDOW	22-May-13	750,000.00	74.8	750,000.00	-	-	-	-	-
365	29-May-13	1,250,000.00	74.9	1,250,000.00	81	2	280,870.00	6,527,780.00	7,777,780.00
SPECIAL WINDOW	29-May-13	750,000.00	74.9	750,000.00	-	-	-	-	-
366	5-Jun-13	1,250,000.00	75.0	1,250,000.00	80	-	450,000.00	5,970,425.00	7,220,425.00
SPECIAL WINDOW	5-Jun-13	750,000.00	75.0	750,000.00	-	-	-	-	-
367	12-Jun-13	1,250,000.00	75.3	1,250,000.00	89	0	410100	6447385	7,697,385.00
SPECIAL WINDOW	12-Jun-13	750,000.00	72.3	750,000.00	-	-	-	-	-
368	19-Jun-13	1,250,000.00	75.5	1,250,000.00	85	9	180000	6255800	7,505,800.00
SPECIAL WINDOW	19-Jun-13	750,000.00	75.5	750,000.00	-	-	-	-	-
369	26-Jun-13	1,250,000.00	75.5	1,250,000.00	105	3	189500	6901300	8,151,300.00
SPECIAL WINDOW	26-Jun-13	750,000.00	75.5	750,000.00	-	-	-	-	-
Total		52,250,000.00		52,250,000.00	1,801	3	5,568,526.53	136,468,500.10	167,968,500.20

Source : Central Bank of Liberia, Monrovia, Liberia.

MONEY AND BANKING

CENTRAL BANK OF LIBERIA

1.8 Central Bank of Liberia Fx Auction - 2013 (continue)

Auction		FX Offered	Auction	Total	No. of	No. of	Value of	Over/(Under)	Total Value of Bids
		for sale by	Rate	Purchased	Accepted	Rejected	Rejected	Subscription	Submitted by
No.	Date	CBL (US\$)	L\$/US	US\$	Bids	Bids	Bids (US\$)	(US\$)	Participating Banks/FX Bureaux (US\$)
370	3-Jul-13	1,250,000.00	75.5	1,250,000.00	103	-	403,170.00	6,916,622.00	8,166,622.00
SPECIAL WINDOW	3-Jul-13	750,000.00	75.5	750,000.00					
371	10-Jul-13	1,250,000.00	75.5	1,250,000.00	103	-	135,000.00	7,249,200.00	8,499,200.00
SPECIAL WINDOW	10-Jul-13	750,000.00	75.5	750,000.00					
372	17-Jul-13	1,250,000.00	76.0	1,250,000.00	105	7	520,000.00	7,021,379.06	8,271,379.06
SPECIAL WINDOW	17-Jul-13	500,000.00	76.0	500,000.00					
373	24-Jul-13	500,000.00	76.0	500,000.00	109	-	816,000.00	6,715,275.00	7,215,275.00
SPECIAL WINDOW	24-Jul-13	500,000.00	76.0	500,000.00					
374	31-Jul-13	500,000.00	76.5	500,000.00	126	4	120,000.00	7,948,336.00	8,448,336.00
SPECIAL WINDOW	31-Jul-13	500,000.00	76.5	500,000.00					
375	7-Aug-13	500,000.00	77.0	500,000.00	113	18	174,150.00	7,514,471.00	8,014,471.00
SPECIAL WINDOW	7-Aug-13	500,000.00	77.0	500,000.00					
376	14-Aug-13	400,000.00	77.5	400,000.00	137	14		8,247,910.00	8,647,910.00
SPECIAL WINDOW	14-Aug-13	350,000.00	77.5	350,000.00					
377	21-Aug-13	400,000.00	77.5	400,000.00	130	1	54,970.00	7,221,960.00	7,621,960.00
SPECIAL WINDOW	21-Aug-13	350,000.00	77.5	350,000.00					
378	28-Aug-13	400,000.00	78.0	400,000.00	101	5	105,000.00	4,287,360.00	4,687,360.00
SPECIAL WINDOW	28-Aug-13	350,000.00	78.0	350,000.00					
SPECIAL WINDOW	4-Sep-13	350,000.00	78.5	350,000.00					
379	4-Sep-13	400,000.00	78.5	400,000.00	96	23	313,474.00	7,427,074.00	7,827,074.00
SPECIAL WINDOW	11-Sep-13	350,000.00	78.5	350,000.00					
380	11-Sep-13	400,000.00	78.5	400,000.00	121	1	0.00	6,764,730.00	7,164,730.00
381	18-Sep-13	750,000.00	78.5	750,000.00	117	0	40,475.00	5,050,445.00	5,800,445.00
382	25-Sep-13	750,000.00	78.8	750,000.00	98	1	25,000.00	6,174,550.00	6,924,550.00
383	2-Oct-13	750,000.00	79.0	750,000.00	112	1	10,000.00	6,579,127.00	7,329,127.00
384	9-Oct-13	750,000.00	79.5	750,000.00	117	10	120,125.00	7,042,400.00	7,792,400.00
385	16-Oct-13	500,000.00	79.5	500,000.00	96	2	1,003,000.00	6,137,000.00	6,637,000.00
386	23-Oct-13	500,000.00	79.5	500,000.00	124	0	330,824.00	6,318,009.00	6,818,009.00
387	30-Oct-13	500,000.00	79.5	500,000.00	124	0	270,000.00	6,116,787.50	6,613,787.50
388	6-Nov-13	500,000.00	79.5	500,000.00	118	0	66,520.00	6,177,370.00	6,677,370.00
389	13-Nov-13	500,000.00	79.6	500,000.00	94	0	302,000.00	6,021,750.00	6,521,750.00
390	20-Nov-13	500,000.00	79.5	500,000.00	85	17	7,435.00	5,088,585.00	5,588,585.00
391	27-Nov-13	300,000.00	79.5	300,000.00	85	3	560,000.00	6,366,055.00	6,666,055.00
392	4-Dec-13	300,000.00	79.8	300,000.00	58	32	160,000.00	7,118,875.00	7,418,875.00
393	11-Dec-13	300,000.00	79.8	300,000.00	57	21	3,500.00	6,569,990.00	6,869,990.00
394	18-Dec-13	300,000.00	79.5	300,000.00	51	15	120,000.00	6,569,990.00	6,744,510.00
Total		19,700,000.00		19,700,000.00	2,580	175	5,660,643.00	164,645,250.56	178,966,770.56

Source : Central Bank of Liberia, Monrovia, Liberia.

MONEY AND BANKING

1.8a Central Bank of Liberia Fx Auction - 2014

CENTRAL BANK OF LIBERIA

Auction No.	Date	FX Offered for sale by CBL (US\$)	Auction Rate L\$/US	Total Purchased US\$	No. of Accepted Bids	No. of Rejected Bids	Value of Rejected Bids (US\$)	Over/(Under) Subscription (US\$)	Total Value of Bids Submitted by Participating Banks/FX Bureaux (US\$)
395	22-Jan-14	4,200,000.00	80.0	4,200,000.00	74	15	265,000.00	3,605,700.00	7,805,700.00
396	29-Jan-14	3,000,000.00	79.0	3,000,000.00	104	25	110,000.00	6,066,040.00	9,066,040.00
397	5-Feb-14	2,000,000.00	79.0	2,000,000.00	100	6	20,000.00	4,395,250.00	6,395,250.00
398	12-Feb-14	750,000.00	79.0	750,000.00	115	16	40,000.00	8,385,825.00	9,135,825.00
399	19-Feb-14	750,000.00	80.0	750,000.00	84	33	390,000.00	8,463,525.00	9,213,525.00
400	26-Feb-14	750,000.00	83.0	750,000.00	97	34	350,000.00	9,104,026.00	9,854,026.00
401	5-Mar-14	750,000.00	83.0	750,000.00	93	21	40,000.00	8,631,860.00	9,381,860.00
402	12-Mar-14	750,000.00	83.0	750,000.00	80	13	200,000.00	7,101,100.00	7,851,100.00
403	19-Mar-14	750,000.00	84.0	750,000.00	90	31	236,904.00	8,178,704.00	8,928,704.00
404	26-Mar-14	750,000.00	84.0	750,000.00	72	24	440,000.00	8,290,199.52	9,040,199.52
405	2-Apr-14	750,000.00	84.0	750,000.00	89	13	709,411.00	8,902,640.41	9,652,640.41
406	9-Apr-14	750,000.00	86.0	750,000.00	84	12	129,500.00	8,180,550.00	8,930,550.00
407	16-Apr-14	750,000.00	86.0	750,000.00	35	71	20,000.00	8,097,895.29	8,847,895.29
408	23-Apr-14	750,000.00	86.0	750,000.00	82	16	100,000.00	8,278,650.00	9,028,650.00
409	30-Apr-14	750,000.00	87.0	750,000.00	66	22	430,000.00	8,061,880.00	8,811,880.00
410	7-May-14	750,000.00	87.5	750,000.00	79	20	200,000.00	7,684,980.00	8,434,980.00
411	15-May-14	2,500,000.00	84.0	2,500,000.00	108	5	61,760.00	7,916,210.00	10,416,210.00
412	21-May-14	2,500,000.00	84.0	2,500,000.00	90	10	508,647.00	9,172,797.00	11,672,797.00
413	28-May-14	1,000,000.00	85.0	1,000,000.00	73	44	613,000.00	10,742,740.00	11,742,740.00
414	4-Jun-14	1,000,000.00	85.0	1,000,000.00	87	32	500,000.00	8,761,989.89	9,761,989.89
415	11-Jun-14	750,000.00	87.0	750,000.00	65	17	1,200,000.00	5,631,340.00	6,381,340.00
416	18-Jun-14	750,000.00	88.0	750,000.00	60	1	1,150,000.00	5,389,800.00	6,139,800.00
417	25-Jun-14	750,000.00	89.0	750,000.00	63	1	1,250,000.00	6,988,800.00	7,738,800.00
Total		28,200,000.00		28,200,000.00	1,890	482	8,964,222.00	176,032,502.11	204,232,502.11

Source : Central Bank of Liberia, Monrovia, Liberia.

MONEY AND BANKING

CENTRAL BANK OF LIBERIA

1.8a Central Bank of Liberia Fx Auction - 2014 Con't

Auction No.	Date	FX Offered for sale by CBL (US\$)	Auction Rate LS/US	Total Purchased US\$	No. of Accepted Bids	No. of Rejected Bids	Value of Rejected Bids (US\$)	Over/(Under) Subscription (US\$)	Total Value of Bids Submitted by Participating Banks/FX Bureaux (US\$)
418	2-Jul-14	750,000.00	89.0	750,000.00	68	3	1,250,000.00	5,915,200.00	6,665,200.00
419	9-Jul-14	750,000.00	89.0	750,000.00	75	1	2,500,000.00	8,235,400.00	8,985,400.00
420	16-Jul-14	750,000.00	90.0	750,000.00	77	1	885,000.00	6,200,500.00	6,950,500.00
421	23-Jul-14	5,400,000.00	82.0	5,400,000.00	114	0	370,000.00	1,895,148.53	7,295,148.53
422	6-Aug-14	1,500,000.00	81.3	1,500,000.00	96	2	40,580.00	3,727,940.00	5,227,940.00
423	13-Aug-14	1,000,000.00	82.0	1,000,000.00	105	0	105,000.00	3,807,316.11	4,807,316.11
424	20-Aug-14	1,500,000.00	82.0	1,500,000.00	104	21	-	5,731,200.00	7,231,200.00
425	3-Sep-14	1,500,000.00	84.0	1,500,000.00	36	10	-	5,851,484.81	7,351,484.81
Direct Mopping	10-Sep-14	1,350,000.00	84.0	-	-	-	-	-	-
426	17-Sep-14	1,500,000.00	84.0	1,500,000.00	108	1	110,500.00	3,370,226.45	4,870,226.45
427	1-Oct-14	1,500,000.00	84.0	1,500,000.00	92	14	174,293.11	6,178,363.36	7,678,363.36
428	15-Oct-14	1,500,000.00	84.0	1,500,000.00	96	0	47,058.82	3,795,955.82	5,295,955.82
Direct Mopping	22-Oct-14	1,000,000.00	84.0	1,000,000.00	-	-	-	-	-
429	29-Oct-14	1,000,000.00	84.0	1,000,000.00	84	0	32,800.00	3,508,075.63	4,508,075.63
430	5-Nov-14	1,500,000.00	84.0	1,500,000.00	65	3	15,000.00	1,673,833.10	3,173,833.10
431	19-Nov-14	1,000,000.00	83.0	1,000,000.00	82	5	600.00	2,991,984.39	3,991,984.39
432	3-Dec-14	1,500,000.00	82.0	1,500,000.00	61	0	231,856.25	1,131,316.25	2,131,316.25
433	17-Dec-14	1,500,000.00	81.0	1,500,000.00	84	0	29,500.00	1,956,048.80	2,956,048.80
Total		26,500,000.00		25,150,000.00	1,347	61	5,792,188.18	65,969,993.25	89,119,993.25

Source : Central Bank of Liberia, Monrovia, Liberia.

MONEY AND BANKING

CENTRAL BANK OF LIBERIA

1.8b Central Bank of Liberia Fx Auction - 2015

Auction No.	Date	FX Offered for sale by CBL (US\$)	Auction Rate L\$/US	Total Purchased US\$	No. of Accepted Bids	No. of Rejected Bids	Value of Rejected Bids (US\$)	Over/(Under) Subscription (US\$)	Total Value of Bids Submitted by Participating Banks/FX Bureaux (US\$)
434	7-Jan-15	1,500,000.00	82.00	1,500,000.00	100	0	334,150.00	2,928,957.00	4,428,957.00
435	14-Jan-15	1,500,000.00	83.00	1,500,000.00	95	7	54,966.00	2,847,038.50	4,347,038.50
436	21-Jan-15	1,000,000.00	84.00	1,000,000.00	48	8	209,000.00	2,451,073.07	3,451,073.07
437	4-Feb-15	1,500,000.00	84.00	1,500,000.00	64	4	155,000.00	1,722,987.00	3,222,987.00
438	12-Feb-15	1,000,000.00	84.00	1,000,000.00	40	0	80,000.00	820,874.17	1,820,874.17
439	18-Feb-15	1,000,000.00	84.00	1,000,000.00	56	3	95,783.00	1,790,574.46	2,790,574.46
440	25-Feb-15	1,000,000.00	84.00	1,000,000.00	64	0	570,000.00	1,767,300.00	2,767,300.00
441	4-Mar-15	1,000,000.00	84.00	1,000,000.00	50	1	201,000.00	1,112,847.00	2,112,847.00
442	18-Mar-15	1,000,000.00	84.00	1,000,000.00	50	0	130,300.00	1,435,800.00	2,435,800.00
443	25-Mar-15	1,000,000.00	84.00	1,000,000.00	54	1	45,000.00	723,219.00	1,723,219.00
444	1-Apr-15	1,000,000.00	84.00	1,000,000.00	48	0	5,000.00	352,840.00	1,352,840.00
445	15-Apr-15	1,000,000.00	84.00	1,000,000.00	46	0	100,000.00	1,631,500.00	263,500.00
446	22-Apr-15	1,000,000.00	84.00	1,000,000.00	46	0	345,000.00	693,580.00	1,693,580.00
Total		14,500,000.00		14,500,000.00	761	24	2,325,199.00	20,278,590.20	32,410,590.20

Source : Central Bank of Liberia, Monrovia, Liberia.

1.9 Central Bank Bills 2013 - 2015

Auction No.	Date	Maturity Date	Amount offered CBL (LR\$)	Amount Issued CBL (LR\$)	Value of bid(s) Received CBL (LR\$)	Value of bid(s) Processed CBL (LR\$)	Over/(Under) Subscription (LR\$)	No. of Bid(s) Received	No. of Bid(s) Processed	No. of Winning Bid(s)	No. of Prorated Bid(s)	No. of Non-Selected	No. of Rejected Bid(s)	Weighted Average Discount
1	30-Jul-13	31-Oct-13	153,000,000.00	153,000,000.00	298,400,000.00	288,400,000.00	145,400,000.00	28	26	16	7	10	2	2.56
2	7-Aug-13	6-Nov-13	269,500,000.00	269,500,000.00	388,350,000.00	388,350,000.00	118,850,000.00	20	20	13	3	7	0	2.04
3	15-Aug-13	14-Nov-13	387,500,000.00	387,500,000.00	478,700,000.00	478,700,000.00	91,200,000.00	19	19	13	1	6	0	1.99
4	28-Aug-13	27-Nov-13	387,500,000.00	387,500,000.00	448,700,000.00	448,700,000.00	61,200,000.00	12	12	11	1	1	0	2.02
5	19-Nov-13	20-May-14	2,000,000,000.00	1,130,000,000.00	1,130,000,000.00	1,130,000,000.00	(870,000,000.00)	16	16	16	0	0	0	2.44
6	10-Jan-14	11-Jul-14	2,000,000,000.00	885,000,000.00	885,000,000.00	885,000,000.00	(1,115,000,000.00)	13	13	13	0	0	0	3.01
7	17-Jan-14	18-Apr-14	1,500,000,000.00	720,000,000.00	720,000,000.00	720,000,000.00	(780,000,000.00)	12	12	12	0	0	0	5.78
8	2-Jul-14	1-Oct-14	2,000,000,000.00	497,750,000.00	497,750,000.00	497,750,000.00		15	15	15	0	0	0	4.50
		31-Dec-14		870,000,000.00	870,000,000.00	870,000,000.00	(632,250,000.00)	11	11	11	0	0	0	5.56
9	9-Oct-14	9-Apr-15	1,000,000,000.00	1,000,000,000.00	1,240,000,000.00	1,240,000,000.00	240,000,000.00	17	17	16	1	1	0	7.05
10	20-Jan-15	21-Jul-15	1,500,000,000.00	1,165,000,000.00	1,165,000,000.00	1,165,000,000.00	(335,000,000.00)	17	17	17	0	0	0	6.43
Total			11,197,500,000.00	7,465,250,000.00	8,121,900,000.00	8,111,900,000.00	(3,075,600,000.00)	180	178	153	13	25	2	6.43

1.9 Government of Liberia Treasury Bills Auction 2013 - 2015

Auction No.	Date	Maturity Date	Amount Offered GOL (LR\$)	Amount Issued GOL (LR\$)	Value of bid(s) Received	Value of bids processed	Over/(Under) Subscription (LR\$)	No. of Bid(s) Received	No. of Bid(s) Processed	No. of Winning Bid(s)	No. of Prorated Bid(s)	No. of Non-Selected Bid(s)	No. of Rejected Bid(s)	Average Discount Rate (%)
1	2-May-13	1-Aug-13	149,000,000.00	149,000,000.00	298,800,000.00	298,800,000.00	149,800,000.00	28	28	16	5	12	-	2.19
2	6-Jun-13	5-Sep-13	228,000,000.00	228,000,000.00	338,600,000.00	270,200,000.00	110,600,000.00	25	21	16	1	4	4	2.31
3	4-Jul-13	3-Oct-13	153,000,000.00	153,000,000.00	278,600,000.00	278,600,000.00	125,600,000.00	22	22	12	2	8	0	2.29
4	1-Aug-13	7-Nov-13	149,000,000.00	149,000,000.00	332,500,000.00	332,500,000.00	183,500,000.00	27	27	9	1	18	0	2.04
5	5-Sep-13	5-Dec-13	77,500,000.00	77,500,000.00	92,950,000.00	92,950,000.00	15,450,000.00	11	11	10	2	1	0	2.01
6	3-Oct-13	2-Jan-14	79,500,000.00	79,500,000.00	153,350,000.00	143,350,000.00	73,850,000.00	16	15	9	2	6	1	1.96
7	8-Nov-13	6-Feb-14	160,000,000.00	160,000,000.00	192,000,000.00	192,000,000.00	32,000,000.00	12	12	10	2	0	0	1.62
8	5-Dec-13	6-Mar-14	81,000,000.00	81,000,000.00	120,900,000.00	120,900,000.00	39,900,000.00	12	12	9	1	3	0	2.07
9	2-Jan-14	3-Apr-14	82,500,000.00	82,500,000.00	98,950,000.00	98,950,000.00	16,450,000.00	11	11	9	1	2	0	2.51
10	6-Feb-14	1-May-14	80,500,000.00	58,300,000.00	58,300,000.00	58,300,000.00	(22,200,000.00)	9	9	9	0	0	0	3.71
11	6-Mar-14	5-Jun-14	83,500,000.00	83,500,000.00	100,150,000.00	100,150,000.00	16,650,000.00	10	10	10	1	0	0	3.9
12	3-Apr-14	3-Jul-14	85,500,000.00	85,500,000.00	126,950,000.00	126,950,000.00	41,450,000.00	15	15	12	1			3.58
13	1-May-14	7-Aug-14	171,000,000.00	171,000,000.00	296,200,000.00	296,200,000.00	125,200,000.00	22	22	14	1	8	0	3.69
14	5-Jun-14	4-Sep-14	173,000,000.00	173,000,000.00	282,600,000.00	282,600,000.00	109,600,000.00	19	19	14	4	5	0	3.32
15	12-Jun-14	11-Jun-15	500,000,000.00	500,000,000.00	670,000,000.00	670,000,000.00	170,000,000.00	15	15	12	1	3	0	6.85
16	3-Jul-14	2-Oct-14	181,000,000.00	144,600,000.00	144,600,000.00	144,600,000.00	(36,400,000.00)	11	11	11	0	0	0	3.92
17	7-Aug-14	6-Nov-14	165,000,000.00	165,000,000.00	259,000,000.00	184,000,000.00	94,000,000.00	14	11	11	1	0	3	3.87
18	4-Sep-14	4-Dec-14	169,000,000.00	169,000,000.00	172,100,000.00	172,100,000.00	3,100,000.00	12	12	12	1	0	0	4.15
19	2-Oct-14	1-Jan-15	169,000,000.00	169,000,000.00	242,100,000.00	242,100,000.00	73,100,000.00	15	15	11	3	4	0	4.16
20	7-Nov-14	5-Feb-15	169,000,000.00	140,700,000.00	140,700,000.00	140,700,000.00	(28,300,000.00)	7	7	7	0	0	0	4.41
21	4-Dec-14	5-Mar-15	83,500,000.00	35,050,000.00	35,050,000.00	35,050,000.00	(48,450,000.00)	3	3	3	0	0	0	4.57
22	2-Jan-15	2-Apr-15	82,500,000.00	82,500,000.00	144,250,000.00	144,250,000.00	61,750,000.00	16	16	11	4	5	0	4.11
23	5-Feb-15	7-May-15	85,000,000.00	85,000,000.00	151,500,000.00	151,500,000.00	66,500,000.00	18	18	11	2	7	0	3.97
24	5-Mar-15	4-Jun-15	84,500,000.00	84,500,000.00	151,700,000.00	151,700,000.00	67,200,000.00	17	17	8	2	7	0	3.92
25	2-Apr-15	2-Jul-15	84,500,000.00	84,500,000.00	151,400,000.00	151,400,000.00	66,900,000.00	19	19	9	5	5	0	3.79
TOTAL			3,526,000,000.00	3,390,650,000.00	5,033,250,000.00	4,879,850,000.00	1,507,250,000.00	386	378	265	43	98	8	3.40

REAL SECTOR

CENTRAL BANK OF LIBERIA

2.1: Harmonized Consumer Price Index (HCPI) - 2013

Function	Weight (%)	Jan-13	Feb-13	13-Mar	Apr-13	13-May	13-Jun
Food & Non-alcoholic Beverages	45.2	231.06	226.30	232.23	232.34	222.84	233.85
Alcoholic Beverages, Tobacco & Narcotics	3.0	164.33	170.39	169.31	165.44	163.28	168.84
Clothing & Footwear	7.8	169.13	175.72	174.38	172.43	174.64	179.75
Housing, Water, Electricity, Gas & other fuels	12.0	131.38	131.03	131.68	132.28	132.39	132.01
Furnishings, Household Equipment & Routine Maintenance of the House	5.3	181.56	185.26	185.27	177.08	191.44	203.28
Health	3.9	104.05	104.05	100.68	100.68	104.05	104.05
Transport	6.1	226.92	227.58	228.80	229.07	227.93	209.78
Communication	1.5	86.66	86.73	86.73	86.73	86.87	86.99
Recreation & Culture	3.9	146.26	146.42	146.42	146.71	151.25	149.75
Education	3.2	100.00	100.00	100.00	100.00	100.00	100.00
Restaurants & Hotels	4.6	273.97	275.22	275.22	276.48	281.39	279.50
Miscellaneous Goods & Services	3.5	142.64	144.24	144.20	144.74	144.15	145.36
General Index	100.0	193.66	192.52	195.08	194.61	191.64	196.54

Function	Weight (%)	Jul-13	Aug-13	Sep-13	Oct-13	Nov-13	Dec-13
Food & Non-alcoholic Beverages	45.2	236.99	244.21	239.57	245.85	243.40	244.27
Alcoholic Beverages, Tobacco & Narcotics	3.0	173.54	173.32	176.30	178.06	176.08	173.26
Clothing & Footwear	7.8	183.39	186.49	190.41	190.83	190.33	192.23
Housing, Water, Electricity, Gas & other fuels	12.0	134.21	134.10	135.54	133.98	134.25	131.78
Furnishings, Household Equipment & Routine Maintenance of the House	5.3	211.74	213.23	214.45	212.57	209.80	216.47
Health	3.9	104.05	104.05	104.05	104.05	104.05	104.05
Transport	6.1	210.11	210.46	211.81	211.81	212.89	258.72
Communication	1.5	86.99	87.26	87.39	87.51	87.56	87.68
Recreation & Culture	3.9	150.03	150.43	157.25	157.75	159.33	159.81
Education	3.2	100.00	100.00	100.00	100.00	100.00	100.00
Restaurants & Hotels	4.6	293.23	296.86	299.28	301.46	302.42	304.53
Miscellaneous Goods & Services	3.5	146.04	148.04	150.35	150.89	151.63	164.04
General Index	100.0	199.78	203.63	202.70	205.52	204.36	208.23

The Harmonized Consumer Price Index (HCPI) is an amalgamation of the Classification of Individual Consumption by Purpose (COICOP), consisting of twelve functions (major groups) together with the Monrovia Consumer Price Index (MCPI) and its weights obtained from the 1964 limited expenditure survey. The Survey sample comprised wage-earner and clerical-employee households of two or more persons with monthly income not exceeding US\$250.

Sources : Liberia Institute for Statistics & Geo-Information Services (LISGIS) and Central Bank of Liberia (CBL)

REAL SECTOR

2.1a: Harmonized Consumer Price Index (HCPI) - 2014

Function	Weight (%)	Jan-14	Feb-14	Mar-14	Apr-14	May-14	Jun-14
Food & Non-alcoholic Beverages	45.2	243.88	240.79	244.95	244.94	239.07	255.28
Alcoholic Beverages, Tobacco & Narcotics	3.0	183.74	185.15	186.92	190.96	186.22	192.25
Clothing & Footwear	7.8	194.31	202.37	208.69	211.68	206.10	219.83
Housing, Water, Electricity, Gas & other fuels	12.0	131.47	130.72	134.10	135.74	133.44	134.10
Furnishings, Household Equipment & Routine Maintenance of the House	5.3	223.32	207.61	222.40	225.64	224.41	228.82
Health	3.9	109.46	112.50	122.97	122.97	120.61	121.96
Transport	6.1	246.20	256.23	257.74	258.80	259.20	260.88
Communication	1.5	87.89	87.61	88.00	88.29	88.28	88.62
Recreation & Culture	3.9	160.71	160.53	163.87	165.41	165.38	162.59
Education	3.2	100.00	100.00	100.00	100.00	100.00	100.00
Restaurants & Hotels	4.6	308.50	309.19	316.44	321.86	321.74	328.14
Miscellaneous Goods & Services	3.5	164.42	164.58	171.19	173.55	173.65	179.97
General Index	100.0	208.54	207.65	212.46	213.64	210.00	219.46

Function	Weight (%)	Jul-14	Aug-14	Sep-14	Oct-14	Nov-14	Dec-14
Food & Non-alcoholic Beverages	45.2	261.74	266.87	278.70	282.55	261.91	268.57
Alcoholic Beverages, Tobacco & Narcotics	3.0	194.55	191.98	188.76	186.35	189.57	187.63
Clothing & Footwear	7.8	217.37	229.14	213.10	213.10	215.23	215.23
Housing, Water, Electricity, Gas & other fuels	12.0	133.00	132.16	144.15	143.86	133.39	139.25
Furnishings, Household Equipment & Routine Maintenance of the House	5.3	222.29	218.37	222.87	221.73	219.73	219.73
Health	3.9	121.96	121.96	121.96	121.96	121.96	121.96
Transport	6.1	260.85	269.98	258.36	258.36	258.21	258.21
Communication	1.5	88.46	87.81	88.01	88.01	87.93	87.93
Recreation & Culture	3.9	164.00	161.78	162.13	162.13	161.77	161.77
Education	3.2	100.00	100.00	100.00	100.00	100.00	100.00
Restaurants & Hotels	4.6	329.98	317.70	322.24	321.52	319.88	319.88
Miscellaneous Goods & Services	3.5	168.52	166.67	185.20	184.05	170.42	170.42
General Index	100.0	221.51	224.19	230.04	231.54	220.53	224.18

The Harmonized Consumer Price Index (HCPI) is an amalgamation of the Classification of Individual Consumption by Purpose (COICOP), consisting of twelve functions (major groups) together with the Monrovia Consumer Price Index (MCPI) and its weights obtained from the 1964 limited expenditure survey.

The Survey sample comprised wage-earner and clerical-employee households of two or more persons with monthly income not exceeding US\$250.

Sources : Liberia Institute for Statistics & Geo-Information Services (LISGIS) and Central Bank of Liberia (CBL)

2.1b: Harmonized Consumer Price Index (HCPI) - 2015

Function	Weight (%)	Jan-15	Feb-15	Mar-15	Apr-15
Food & Non-alcoholic Beverages	45.2	272.58	270.65	279.95	279.53
Alcoholic Beverages, Tobacco & Narcotics	3.0	192.21	184.84	191.58	191.34
Clothing & Footwear	7.8	213.97	205.90	209.27	209.98
Housing, Water, Electricity, Gas & other fuels	12.0	139.40	139.05	128.46	133.87
Furnishings, Household Equipment & Routine Maintenance of the House	5.3	222.89	217.62	240.94	245.05
Health	3.9	111.15	108.11	119.59	120.27
Transport	6.1	270.62	253.52	231.80	232.17
Communication	1.5	84.41	84.46	84.46	84.46
Recreation & Culture	3.9	191.46	192.63	191.09	191.36
Education	3.2	100.00	100.00	100.00	100.00
Restaurants & Hotels	4.6	296.28	297.97	302.27	299.87
Miscellaneous Goods & Services	3.5	171.06	172.44	185.33	172.54
General Index	100.0	226.57	223.54	227.88	228.10

The Harmonized Consumer Price Index (HCPI) is an amalgamation of the Classification of Individual Consumption by Purpose (COICOP), consisting of twelve functions (major groups) together with the Monrovia Consumer Price Index (MCPI) and its weights obtained from the 1964 limited expenditure survey.

The Survey sample comprised wage-earner and clerical-employee households of two or more persons with monthly income not exceeding US\$250.

Sources : Liberia Institute for Statistics & Geo-Information Services (LISGIS) and Central Bank of Liberia (CBL)

REAL SECTOR

CENTRAL BANK OF LIBERIA

2.1c: HCPI Inflation Rate (Year-on-Year) - 2013

Function	Weight (%)	Jan-13	Feb-13	12-Mar	Apr-13	May-13	Jun-13
Food & Non-alcoholic Beverages	45.2	13.4	7.7	13.7	15.0	9.9	11.1
Alcoholic Beverages, Tobacco & Narcotics	3.0	(0.3)	2.8	6.3	4.7	4.0	7.8
Clothing & Footwear	7.8	(0.8)	2.4	1.5	(0.1)	0.3	2.5
Housing, Water, Electricity, Gas & other fuels	12.0	0.7	(0.2)	(0.2)	1.0	(0.2)	(0.1)
Furnishings, Household Equipment & Routine Maintenance of the House	5.3	(2.5)	(1.1)	(1.2)	(5.4)	1.4	7.0
Health	3.9	-	-	(3.3)	(3.3)	-	-
Transport	6.1	10.9	10.9	10.5	9.6	8.7	0.3
Communication	1.5	0.2	0.1	0.2	0.1	0.1	0.1
Recreation & Culture	3.9	6.7	6.6	6.5	6.6	9.5	8.2
Education	3.2	-	-	-	-	-	-
Restaurants & Hotels	4.6	2.5	2.5	2.4	2.5	3.5	2.2
Miscellaneous Goods & Services	3.5	5.4	5.4	5.3	5.3	4.3	4.0
General Rate of Inflation	100.0	8.0	5.5	8.4	8.7	6.5	7.0

Function	Weight (%)	Jul-13	Aug-13	Sep-13	Oct-13	Nov-13	Dec-13
Food & Non-alcoholic Beverages	45.2	8.8	8.1	9.1	11.6	8.1	7.7
Alcoholic Beverages, Tobacco & Narcotics	3.0	10.2	10.4	7.3	6.4	6.5	8.0
Clothing & Footwear	7.8	6.2	8.7	8.6	9.5	10.2	10.6
Housing, Water, Electricity, Gas & other fuels	12.0	(0.8)	2.4	2.6	1.3	1.9	0.9
Furnishings, Household Equipment & Routine Maintenance of the House	5.3	12.6	13.9	13.7	7.3	8.9	13.7
Health	3.9	-	-	-	-	2.7	4.8
Transport	6.1	2.3	2.4	2.8	(2.9)	(2.1)	14.4
Communication	1.5	0.4	0.8	0.9	1.3	1.3	1.4
Recreation & Culture	3.9	9.0	9.5	14.5	8.1	9.1	9.3
Education	3.2	-	-	-	-	-	-
Restaurants & Hotels	4.6	8.6	10.4	11.1	13.1	13.3	12.6
Miscellaneous Goods & Services	3.5	6.3	8.0	10.1	5.7	6.3	15.8
General Rate of Inflation	100.0	7.1	7.5	8.2	8.5	7.0	8.5

The Harmonized Consumer Price Index (HCPI) is an amalgamation of the Classification of Individual Consumption by Purpose (COICOP), consisting of twelve functions (major groups) together the Monrovia Consumer Price Index (MCPI) and its weights, obtained from the 1964 limited expenditure survey.

The Survey sample comprised wage-earner and clerical-employee households of two or more persons with monthly income not exceeding US\$250.

Sources : Liberia Institute for Statistics & Geo-Information Services (LISGIS) and Central Bank of Liberia (CBL)

REAL SECTOR

CENTRAL BANK OF LIBERIA

2.1d: HCPI Inflation Rate (Year-on-Year) - 2014

Function	Weight (%)	Jan-14	Feb-14	Mar-14	Apr-14	May-14	Jun-14
Food & Non-alcoholic Beverages	45.2	5.6	6.4	5.5	5.4	7.3	9.2
Alcoholic Beverages, Tobacco & Narcotics	3.0	11.8	8.7	10.4	15.4	14.0	13.9
Clothing & Footwear	7.8	14.9	15.2	19.7	22.8	18.0	22.3
Housing, Water, Electricity, Gas & other fuels	12.0	0.1	(0.2)	1.8	2.6	0.8	1.6
Furnishings, Household Equipment & Routine Maintenance of the House	5.3	23.0	12.1	20.0	27.4	17.2	12.6
Health	3.9	5.2	8.1	22.1	22.1	15.9	17.2
Transport	6.1	8.5	12.6	12.6	13.0	13.7	24.4
Communication	1.5	1.4	1.0	1.5	1.8	1.6	1.9
Recreation & Culture	3.9	9.9	9.6	11.9	12.7	9.3	8.6
Education	3.2	-	-	-	-	-	-
Restaurants & Hotels	4.6	12.6	12.3	15.0	16.4	14.3	17.4
Miscellaneous Goods & Services	3.5	15.3	14.1	18.7	19.9	20.5	23.8
General Rate of Inflation	100.0	7.7	7.9	8.9	9.8	9.6	11.7

Function	Weight (%)	Jul-14	Aug-14	Sep-14	Oct-14	Nov-14	Dec-14
Food & Non-alcoholic Beverages	45.2	10.5	9.3	16.3	14.93	7.60	9.95
Alcoholic Beverages, Tobacco & Narcotics	3.0	12.1	10.8	7.1	4.65	7.66	8.29
Clothing & Footwear	7.8	18.5	22.9	11.9	11.67	13.08	11.96
Housing, Water, Electricity, Gas & other fuels	12.0	-0.9	-1.5	6.4	7.38	(0.64)	5.67
Furnishings, Household Equipment & Routine Maintenance of the House	5.3	5.0	2.4	3.9	4.31	4.74	1.51
Health	3.9	17.2	17.2	17.2	17.21	17.21	17.21
Transport	6.1	24.5	28.3	22.0	21.98	21.29	-0.20
Communication	1.5	1.7	0.6	0.7	0.58	0.42	0.28
Recreation & Culture	3.9	9.3	7.6	3.1	2.78	1.53	1.23
Education	3.2	0.0	0.0	0.0	-	-	-
Restaurants & Hotels	4.6	12.5	7.0	7.7	6.66	5.77	5.04
Miscellaneous Goods & Services	3.5	15.4	12.6	23.2	21.97	12.39	3.88
General Rate of Inflation	100.0	10.9	10.1	13.5	12.66	7.91	7.66

The Harmonized Consumer Price Index (HCPI) is an amalgamation of the Classification of Individual Consumption by Purpose (COICOP), consisting of twelve functions (major groups) together the Monrovia Consumer Price Index (MCPI) and its weights, obtained from the 1964 limited expenditure survey. The Survey sample comprised wage-earner and clerical-employee households of two or more persons with monthly income not exceeding US\$250.

Sources : Liberia Institute for Statistics & Geo-Information Services (LISGIS) and Central Bank of Liberia (CBL)

REAL SECTOR

2.1e: HCPI Inflation Rate (Year-on-Year) - 2015

Function	Weight (%)	Jan-15	Feb-15	Mar-15	Apr-15
Food & Non-alcoholic Beverages	45.2	11.77	12.40	14.29	14.12
Alcoholic Beverages, Tobacco & Narcotics	3.0	4.61	(0.17)	2.49	0.20
Clothing & Footwear	7.8	10.12	1.74	0.28	(0.81)
Housing, Water, Electricity, Gas & other fuels	12.0	6.03	6.37	(4.20)	(1.38)
Furnishings, Household Equipment & Routine Maintenance of the House	5.3	(0.19)	4.82	8.34	8.61
Health	3.9	1.54	(3.90)	(2.75)	(2.20)
Transport	6.1	9.92	(1.06)	(10.29)	(10.29)
Communication	1.5	(3.96)	(3.60)	(4.02)	(4.33)
Recreation & Culture	3.9	19.14	20.00	16.61	15.69
Education	3.2	-	-	-	-
Restaurants & Hotels	4.6	(3.96)	(3.63)	(4.48)	(6.83)
Miscellaneous Goods & Services	3.5	4.04	4.78	8.25	(0.59)
General Rate of Inflation	100.0	8.65	7.65	7.26	6.77

The Harmonized Consumer Price Index (HCPI) is an amalgamation of the Classification of Individual Consumption by Purpose (COICOP), consisting of twelve functions (major groups) together the Monrovia Consumer Price Index (MCPI) and its weights, obtained from the 1964 limited expenditure survey.

The Survey sample comprised wage-earner and clerical-employee households of two or more persons with monthly income not exceeding US\$250.

Sources : Liberia Institute for Statistics & Geo-Information Services (LISGIS) and Central Bank of Liberia (CBL)

REAL SECTOR

CENTRAL BANK OF LIBERIA

2.2: Key Output Volume - 2013

Commodity	Unit	Jan-13	Feb-13	Mar-13	Apr-13	May-13	Jun-13	Jan - Jun Total
Agriculture								
Rubber	Mt.	875.10	1,275.64	7,987.86	1,079.08	8,434.71	6,098.40	25,750.79
Cocoa Beans	Mt.	875.79	403.35	315.09	325.00	1,486.82	673.67	4,079.72
Coffee	Mt.	-	-	96.00	54.00	38.40	-	188.40
Round Logs+	M ³	-	-	-	14,534.61	11,037.85	5,336.72	30,909.18
Sawn Timber	Pcs.	34,575.00	14,753.00	51,633.00	70,462.00	58,488.00	54,497.00	284,408.00
Fish	Kg.	-	-	-	-	-	-	-
Mining								
Gold	Ounces	1,731.93	1,822.44	1,887.00	1,309.00	1,727.45	1,198.50	9,676.32
Diamond	Carat	4,683.49	2,784.73	3,938.00	3,178.00	7,488.50	4,097.98	26,170.70
Iron Ore	Mt.	297,000.00	482,000.00	398,500.00	344,375.00	649,000.00	212,000.00	2,382,875.00
Manufacturing								
Cement	Mt.	9,762.60	3,870.00	6,858.00	14,158.00	20,764.10	18,954.30	74,367.00
Spirit	Litre	48,619.62	38,400.93	35,307.00	29,998.00	30,168.09	34,337.52	216,831.16
Beer	Litre	857,690.04	754,370.32	766,578.00	804,509.00	954,245.12	848,255.08	4,985,647.56
Stout	Litre	556,958.16	459,106.56	459,930.00	443,441.00	509,358.96	513,493.20	2,942,287.88
Malta	Litre	66,512.16	49,476.24	68,841.00	132,858.00	-	132,953.04	450,640.44
Soft Drink	Litre	1,143,964.80	1,081,793.52	1,372,644.00	1,411,711.00	1,365,314.40	1,020,772.80	7,396,200.52
Oil Paint	Gal.	10,282.25	8,339.00	13,482.00	8,647.00	5,649.00	6,537.50	52,936.75
Water Paint	Gal.	12,593.00	11,216.00	2,701.00	5,797.00	10,479.00	10,131.00	52,917.00
Varnish	Gal.	1,948.00	1,647.00	1,955.00	682.00	1,033.00	1,287.00	8,552.00
Manoline Hair Grease	Kg.	3,914.00	916.00	-	2,528.00	5,031.60	4,947.60	17,337.20
Thinner	Gal.	1,862.00	1,021.00	1,847.00	1,365.00	1,200.00	1,378.00	8,673.00
Rubbing Alcohol	Litre	27,912.00	13,484.00	12,990.00	15,507.00	20,450.83	22,743.12	113,086.95
Soap	Kg.	22,886.00	21,343.00	25,269.00	42,463.00	35,506.95	18,434.25	165,902.20
Chlorox	Litre	91,461.00	36,484.00	71,881.00	78,955.00	55,983.94	55,930.95	390,695.88
Nail	Kg.	na	na	na	na	na	na	-
Candle	Kg.	21,032.00	10,962.00	9,440.00	5,849.00	13,902.00	16,674.00	77,859.00
Mattresses	Pcs.	9,030.00	8,540.00	10,670.00	9,820.00	9,010.00	8,536.00	55,606.00
Finished Water ¹	Gal.	103,383,135.60	90,818,269.91	95,067,793.00	157,454,314.00	154,057,015.61	179,680,383.00	780,460,911.12
Mineral Water	Gal.	1,062,606.08	937,782.30	1,072,552.58	868,978.86	779,861.82	738,987.71	5,460,769.35

1: Water from White Plains Treatment Plant

+ Actual for the Second Quarter

Sources : Lands, Mines & Energy; Commerce & Industry; Forestry Development Authority (FDA);

Liberia Produce Marketing Corporation (LPMC) and Liberia Water & Sewer Corporation (LWSC), Monrovia, Liberia

REAL SECTOR

CENTRAL BANK OF LIBERIA

2.2: Key Output Volume - 2013 (continue)

Commodity	Unit	Jul-13	Aug-13	Sep-13	Oct-13	Nov-13	Dec-13	Jul - Dec. Total
Agriculture								
Rubber	Mt.	-	7,656.05	5,073.23	1,108.90	11,398.38	5,443.20	30,679.76
Cocoa Beans	Mt.	1,085.28	354.19	578.40	1,375.80	1,151.47	460.20	5,005.34
Coffee	Mt.	na	na	14.30	na	na	na	14.30
Round Logs	M ³	7,358.44	14,166.56	18,650.70	1,000.65	-	12,470.12	53,646.46
Sawn Timber	Pcs.	48,951.00	27,786.00	28,531.00	34,835.00	44,252.00	32,839.00	217,194.00
Fish	Kg.	na	na	na	na	na	na	na
Mining								
Gold	Ounces	2,034.74	1,873.47	1,105.58	2,020.92	981.76	1,175.29	9,191.76
Diamond	Carat	1,725.55	4,979.54	877.17	5,174.67	3,489.52	5,402.31	21,648.76
Iron Ore	Mt.	491,600.00	331,000.00	255,800.00	555,650.00	407,670.00	523,500.00	2,565,220.00
Manufacturing								
Cement	Mt.	22,025.50	17,183.50	14,473.70	16,296.50	24,571.80	25,074.00	119,625.00
Spirits	Litre	36,614.34	30,250.35	26,800.65	29,999.25	28,079.10	31,297.59	183,041.28
Beer	Litre	865,423.08	387,431.88	550,571.12	693,402.32	787,118.16	824,741.12	4,108,687.68
Stout	Litre	564,680.16	351,758.88	412,552.80	523,512.00	488,070.00	549,790.56	2,890,364.40
Malta	Litre	-	66,535.92	71,470.08	65,783.52	145,720.08	-	349,509.60
Soft Drink	Litre	1,033,444.80	988,927.20	734,680.80	871,372.80	988,574.40	1,407,290.40	6,024,290.40
Oil Paint	Gal.	10,901.50	10,858.00	9,797.75	12,441.50	12,335.25	37,273.75	93,607.75
Water Paint	Gal.	4,217.00	9,369.00	10,414.00	11,350.00	12,026.00	35,150.00	82,526.00
Varnish	Gal.	906.00	1,577.00	1,512.00	1,826.00	1,642.00	2,700.00	10,163.00
Manoline Hair Grease	Kg.	5,737.20	5,048.40	5,216.40	4,704.00	3,024.00	4,662.00	28,392.00
Thinner	Gal.	1,643.00	1,812.00	1,699.00	2,189.00	1,720.00	1,820.00	10,883.00
Rubbing Alcohol	Litre	15,236.99	17,978.75	22,428.49	44,946.88	19,462.00	27,417.59	147,470.70
Soap	Kg.	21,626.70	24,370.95	17,861.70	17,644.50	14,649.60	30,233.40	126,386.85
Chlorox	Litre	63,614.50	61,176.96	82,690.90	45,624.39	56,169.40	66,237.50	375,513.64
Nail	Kg.	na	na	na	na	na	na	na
Candle	Kg.	19,708.50	12,484.50	14,458.50	12,579.00	16,170.00	18,816.00	94,216.50
Mattresses	Pcs.	13,850.00	4,090.00	3,140.00	3,610.00	9,020.00	11,030.00	44,740.00
Finished Water ¹	Gal.	189,605,833.10	139,226,671.88	193,813,515.00	178,375,025.93	153,646,882.19	174,652,931.88	1,029,320,859.98
Mineral Water	Gal.	586,631.44	618,626.42	510,498.02	399,944.25	1,104,222.46	992,869.62	4,212,792.21

1: Water from White Plains Treatment Plant

Sources : Lands, Mines & Energy; Commerce & Industry; Forestry Development Authority (FDA);
Liberia Produce Marketing Corporation (LPMC) and Liberia Water & Sewer Corporation (LWSC), Monrovia, Liberia

2.2a: Key Output Volume - 2014

Commodity	Unit	Jan-14	Feb-14	Mar-14	Apr-14	May-14	Jun-14	Jan - Jun Total
Agriculture								
Rubber	Mt.	2,873.20	7,966.70	3,744.58	4,221.79	2,158.10	4,726.24	25,690.61
Cocoa Beans	Mt.	975.41	661.62	374.80	378.70	340.05	99.60	2,830.18
Coffee	Mt.	-	-	-	-	-	-	-
Round Logs	M ³	168.00	4,412.39	2,288.13	11,857.64	28,164.64	12,034.27	58,925.07
Sawn Timber	Pcs.	47,173.33	55,972.00	89,288.00	172,276.00	100,839.00	-	465,548.33
Fish	Kg.	na	na	na	na	na	na	na
Mining								
Gold	Ounces	1,494.76	1,496.91	1,066.99	2,824.32	2,036.95	1,775.94	10,695.87
Diamond	Carat	6,327.80	4,575.70	6,719.88	3,424.47	11,719.46	4,411.24	37,178.55
Iron Ore	Mt.	541,430.00	409,000.00	490,000.00	629,000.00	523,650.00	205,175.00	2,798,255.00
Manufacturing								
Cement	Mt.	29,400.00	21,613.00	42,296.50	36,272.00	30,826.00	26,198.00	186,605.50
Spirits	Litre	29,073.51	31,310.73	31,917.06	34,024.50	36,384.48	34,281.00	196,991.28
Beer	Litre	775,713.60	643,002.52	563,194.92	524,985.80	704,145.72	681,182.32	3,892,224.88
Stout	Litre	545,315.76	460,619.28	429,366.96	523,472.40	271,228.32	357,762.24	2,587,764.96
Malta	Litre	69,822.72	69,157.44	68,927.76	-	72,468.00	69,070.32	349,446.24
Soft Drink	Litre	1,241,395.20	813,736.80	1,217,828.16	1,190,397.60	1,202,781.60	925,099.20	6,591,238.56
Oil Paint	Gal.	11,234.00	9,864.50	8,098.00	9,779.00	7,677.00	6,223.50	52,876.00
Water Paint	Gal.	16,345.00	11,500.00	15,451.00	12,877.00	13,839.00	8,467.00	78,479.00
Varnish	Gal.	1,247.00	1,540.00	902.00	820.00	834.00	672.00	6,015.00
Manoline Hair Grease	Kg.	2,343.60	1,814.40	3,183.60	168.00	1,806.00	201.60	9,517.20
Thinner	Gal.	642.00	632.00	455.00	1,178.00	1,350.00	-	4,257.00
Rubbing Alcohol	Litre	15,326.88	23,327.43	20,855.35	27,642.33	31,013.34	20,136.20	138,301.53
Soap	Kg.	24,806.70	22,961.55	23,107.65	31,059.15	14,178.75	17,226.90	133,340.70
Chlorox	Litre	60,620.56	56,381.36	91,381.26	85,525.86	91,672.70	56,513.84	442,095.57
Nail	Kg.	na	na	na	na	na	na	na
Candle	Kg.	24,885.00	23,824.50	16,338.00	16,863.00	13,219.50	21,199.50	116,329.50
Mattresses	Pcs.	11,810.00	11,010.00	12,700.00	10,000.00	10,496.00	9,501.00	65,517.00
Finished Water ¹	Gal.	157,454,314.45	131,832,563.89	139,748,722.52	166,140,525.22	171,042,200.37	163,640,240.72	929,858,567.17
Mineral Water	Gal.	837,426.55	767,786.39	647,029.59	491,152.31	393,186.00	320,035.14	3,456,615.98

1: Water from White Plains Treatment Plant

Sources: Lands, Mines & Energy; Commerce & Industry; Forestry Development Authority (FDA);
Liberia Produce Marketing Corporation (LPMC) and Liberia Water & Sewer Corporation (LWSC), Monrovia, Liberia

REAL SECTOR

CENTRAL BANK OF LIBERIA

2.2a: Key Output Volume - 2014 - continues

Commodity	Unit	Jul-14	Aug- 14	Sep- 14	14-Oct	Nov- 14	Dec- 14	Jul-Dec Total	Grand Total
Agriculture									
Rubber	Mt.	7,868.00	3,719.00	5,453.00	7,237.00	3,316.00	6,536.00	34,129.00	59,819.61
Cocoa Beans	Mt.	250.00	409.29	773.20	668.00	675.00	996.00	3,771.49	6,601.67
Coffee	Mt.	na	na	na	-	-	na	na	na
Round Logs	M ³	13,312.00	71,407.00	13,956.00	2,306.00	1,005.00	11,008.00	112,994.00	171,919.07
Sawn Timber	Pcs.	47,361.00	22,080.00	-	79,659.00	74,130.00	75,209.00	298,439.00	763,987.33
Fish	Kg.	na	na	na	na	na	na	na	na
Mining									
Gold	Ounces	2,032.00	1,285.00	727.00	1,479.00	1,674.00	2,045.00	9,242.00	19,937.87
Diamond	Carat	7,881.00	7,923.00	4,882.00	5,332.00	5,894.00	5,791.00	37,703.00	74,881.55
Iron Ore	Mt.	555,166.00	474,538.00	331,542.00	259,292.00	395,598.00	359,000.00	2,375,136.00	5,173,391.00
Manufacturing									
Cement	Mt.	19,967.00	13,774.00	15,544.00	18,991.00	20,184.00	20,288.00	108,748.00	295,353.50
Spirits	Litre	37,767.24	31,475.34	35,048.52	24,027.00	27,146.00	48,553.00	204,017.10	401,008.38
Beer	Litre	766,532.96	142,219.92	103,924.00	459,340.00	223,667.00	717,143.00	2,412,826.88	6,305,051.76
Stout	Litre	523,908.00	274,483.44	161,845.20	343,871.00	356,741.00	586,381.00	2,247,229.64	4,834,994.60
Malta	Litre	69,181.20	-	33,557.04	65,831.00	-	49,381.00	217,950.24	567,396.48
Soft Drink	Litre	516,777.84	445,041.00	395,552.88	584,950.00	683,532.00	881,590.00	3,507,443.72	10,098,682.28
Oil Paint	Gal.	7,228.40	5,440.40	4,437.00	6,120.00	7,106.00	4,217.00	34,548.80	87,424.80
Water Paint	Gal.	9,140.00	7,666.00	3,895.00	6,178.00	7,639.00	9,320.00	43,838.00	122,317.00
Varnish	Gal.	362.00	778.00	407.00	908.00	966.00	820.00	4,241.00	10,256.00
Manoline Hair Grease	Kg.	721.00	-	-	-	-	1,512.00	2,233.00	11,750.20
Thinner	Gal.	8.40	578.00	226.00	1,370.00	900.00	766.00	3,848.40	8,105.40
Rubbing Alcohol	Litre	418.00	4,494.69	33,080.90	29,395.00	19,102.00	11,596.00	98,086.59	236,388.12
Soap	Kg.	18,787.79	23,629.00	22,206.45	19,877.00	16,646.00	23,969.00	125,115.24	258,455.94
Chlorox	Litre	28,662.00	141,748.25	190,922.97	107,278.00	109,636.00	53,334.00	631,581.22	1,073,676.79
Nail	Kg.	na	na	na	na	na	na	na	na
Candle	Kg.	14,700.00	13,020.00	661.50	15,309.00	15,225.00	19,950.00	78,865.50	195,195.00
Mattresses	Pcs.	4,560.00	4,380.00	6,800.00	7,800.00	12,580.00	14,450.00	50,570.00	116,087.00
Finished Water ¹	Gal.	38,790,531.00	32,236,562.00	27,234,789.00	110,993,860.00	134,351,008.00	191,400,684.00	535,007,434.00	1,464,866,001.17
Mineral Water	Gal.	269,480.00	216,740.00	248,930.00	4,343,400.00	4,902,900.00	4,972,500.00	14,953,950.00	18,410,565.98

1: Water from White Plains Treatment Plant

* Estimates

Sources : Lands, Mines & Energy; Commerce & Industry; Forestry Development Authority (FDA);

Liberia Produce Marketing Corporation (LPMC) and Liberia Water & Sewer Corporation (LWSC), Monrovia, Liberia

REAL SECTOR

CENTRAL BANK OF LIBERIA

2.2b: Key Output Volume - 2015

Commodity	Unit	*'Jan-15	*'Feb-15	Mar - 15	**Apr - 15
Agriculture					
Rubber	Mt.	7,140.00	3,629.00	1,307.00	767.63
Cocoa Beans	Mt.	504.00	795.00	1,411.00	903.00
Coffee	Mt.				
Round Logs	M ³	5,112.26	6,428.99	19,389.82	19,895.88
Sawn Timber	Pcs.	86,186.00	98,689.00	98,413.35	104,903.48
Fish	Kg.				
Mining					
Gold	Ounces	1,989.00	1,269.00	1,110.00	2,051.42
Diamond	Carat	8,193.00	5,875.00	7,352.49	4,209.41
Iron Ore	Mt.	85,000.00	219,000.00	648,000.00	387,929.88
Manufacturing					
Cement	Mt.	29,700.00	28,722.00	31,369.00	24,516.73
Spirits	Litre	23,456.97	22,553.37	25,935.75	33,231.76
Beer	Litre	767,502.80	523,077.44	730,298.48	589,512.44
Stout	Litre	549,727.20	432,645.84	479,120.40	348,531.37
Malta	Litre	152,681.76	-	67,359.60	70,743.86
Soft Drink	Litre	953,582.40	810,842.40	456,933.60	740,453.00
Oil Paint	Gal.	12,999.40	14,006.60	13,406.80	9,828.07
Water Paint	Gal.	15,685.00	15,795.00	20,110.00	7,723.55
Varnish	Gal.	1,184.00	1,012.00	997.00	528.43
Manoline Hair Grease	Kg.	1,016.00	612.00	725.00	491.89
Thinner	Gal.	2,763.60	2,192.40	2,192.40	439.80
Rubbing Alcohol	Litre	1,374.00	596.00	812.00	875.15
Soap	Kg.	26,788.34	26,204.03	22,518.38	20,814.09
Chlorox	Litre	32,741.40	34,975.20	33,041.85	27,513.79
Nail	Kg.	na	na	na	na
Candle	Kg.	8,799.00	10,143.00	12,138.00	8,234.09
Mattresses	Pcs.	11,290.00	10,499.00	12,210.00	10,764.11
Finished Water ¹	Gal.	176,532,421.00	144,127,294.70	172,884,055.00	160,541,667.82
Mineral Water	Gal.	3,847,500.00	3,637,500.00	3,825,000.00	4,612,300.82

1: Water from White Plains Treatment Plant

* Actual **Estimates

Sources : Lands, Mines & Energy; Commerce & Industry; Forestry Development Authority (FDA);
Liberia Produce Marketing Corporation (LPMC) and Liberia Water & Sewer Corporation (LWSC), Monrovia, Liberia

REAL SECTOR

CENTRAL BANK OF LIBERIA

2.3: Key Output Value - 2013

Liberian dollars

Commodity	Jan-13	Feb-13	Mar-13	Apr-13	May-13	Jun-13	Jan - Jun 2013 Total
Agriculture							
Rubber ^{3*}	82,705,030.40	203,438,640.00	1,775,098,239.00	205,990,352.96	1,638,764,377.77	935,658,561.06	4,841,655,201.19
Cocoa Beans ⁴	74,363,903.00	34,994,960.00	29,577,029.00	29,189,059.20	127,228,960.47	60,901,974.83	356,255,886.50
Coffee ⁴	-	-	6,420,708.00	4,007,181.02	2,875,150.08	-	13,303,039.10
Round Logs ³	-	-	-	216,223,303	167,553,646	92,441,695	476,218,643.66
Sawn Timber ⁴	1,232,037.51	681,435.11	2,384,907.41	1,219,550.08	1,707,195.99	836,107.65	8,061,233.76
Fish ⁴	-	-	-	-	na	na	-
Mining⁴							
Gold	163,927,102.89	169,703,590.23	171,027,811.00	115,000,904.00	142,708,599.09	97,054,161.25	859,422,168.46
Diamond	141,762,384.02	72,452,097.81	87,471,229.00	96,510,464.00	191,865,878.60	83,835,910.67	673,897,964.10
Iron Ore	1,450,426,602.00	1,869,203,212.00	1,846,146,058.00	1,955,735,328.00	3,654,870,422.10	1,097,788,727.20	11,874,170,349.30
Manufacturing⁴							
Cement	115,526,703.36	45,553,770.00	80,729,049.00	167,860,593.00	248,121,443.51	229,220,415.28	887,011,974.15
Spirit	2,721,350.00	2,114,025.00	2,135,875.00	2,114,250.00	1,881,250.00	2,404,500.00	13,371,250.00
Beer	92,232,780.00	116,695,215.00	126,373,730.00	124,876,860.00	125,590,735.00	101,016,380.00	686,785,700.00
Stout	91,817,920.00	103,926,580.00	112,924,090.00	111,905,060.00	114,668,930.00	100,205,220.00	635,447,800.00
Malta	8,667,995.00	8,663,200.00	9,765,990.00	9,752,730.00	9,986,990.00	7,902,960.00	54,739,865.00
Soft Drink	82,480,120.00	76,013,800.00	86,946,740.00	93,625,770.00	102,943,240.00	78,512,300.00	520,521,970.00
Oil Paint	8,941,486.65	3,835,464.88	6,841,894.00	9,847,949.00	10,325,442.47	7,862,705.45	47,654,942.45
Water Paint	5,957,470.60	3,359,056.00	3,705,965.00	4,033,850.00	5,008,218.60	4,593,088.86	26,657,649.06
Varnish	1,494,694.62	966,525.75	1,228,021.00	1,500,312.00	1,675,469.21	1,385,641.89	8,250,664.47
Manoline Hair Grease	653,437.00	602,780.00	-	248,907.68	1,069,105.68	785,376.94	3,359,607.30
Thinner	743,593.84	745,745.00	1,362,829.00	1,706,184.00	1,522,431.90	1,133,251.24	7,214,034.98
Rubbing Alcohol	301,017.20	191,539.50	209,531.25	394,898.00	363,969.38	378,873.00	1,839,828.33
Soap	17,191,262.40	4,384,474.00	2,037,388.75	4,233,006.40	3,053,561.25	3,596,614.60	34,496,307.40
Chlorox	2,277,968.00	1,431,368.50	1,337,908.25	1,776,271.84	1,571,780.48	1,262,182.87	9,657,479.94
Nail	na	na	na	na	na	na	-
Candle	3,848,286.72	2,300,560.00	2,229,040.00	1,056,563.20	2,323,353.60	3,100,788.48	14,858,592.00
Mattresses	33,223,514.65	27,125,753.96	32,756,933.00	32,639,751.00	30,075,196.72	29,295,179.07	185,116,328.40
Finished Water ^{2*}	16,896,605.76	17,620,218.50	17,071,973.00	16,052,997.00	19,267,134.26	18,104,789.97	105,013,718.49
Mineral Water	33,846,560.00	31,427,375.00	34,283,165.00	33,075,935.00	31,168,640.00	26,036,475.00	189,838,150.00

1. Water from White Plains Treatment Plant.

2. Represents Export values

3. Represents quantity sold, not quantity produced

Sources : Lands, Mines & Energy; Commerce & Industry; Forestry Development Authority (FDA);

Liberia Produce Marketing Corporation (LPMC) and Liberia Water & Sewer Corporation (LWSC), Monrovia, Liberia

REAL SECTOR

CENTRAL BANK OF LIBERIA

2.3: Key Output Value - 2013 (contd)

Liberian dollars

Commodity	Jul-13	Aug-13	Sep-13	Oct-13	Nov-13	Dec-13	Jul - Dec. Total
Agriculture							
Rubber ³	-	61,806,326.40	789,538,536.16	201,645,761.80	184,152,407.04	813,465,354.24	2,050,608,385.64
Cocoa Beans ⁴	103,729,726.22	37,344,608.10	59,059,749.76	136,214,542.52	113,367,342.03	45,612,727.84	495,328,696.47
Coffee ⁴	-	-	1,434,953.52	-	-	-	1,434,953.52
Round Logs ³	111,430,438.37	224,035,463.30	23,884,849.92	14,856,883.21	-	204,280,795.69	578,488,430.48
Sawn Timber ⁴	152,745,557.84	96,942,245.05	111,570,861.60	157,799,567.80	167,347,720.87	137,238,658.60	823,644,611.76
Fish ⁴	na	na	na	na	na	na	na
Mining⁴							
Gold	150,663,140.03	150,002,065.96	93,303,797.37	163,246,928.06	77,895,290.40	90,837,517.25	725,948,739.07
Diamond	95,381,061.24	103,762,770.95	62,677,967.78	118,319,404.90	99,084,799.83	176,576,336.60	655,802,341.28
Iron Ore	2,085,109,823.84	1,372,966,885.50	1,402,630,479.18	3,188,585,365.37	2,278,465,507.98	3,028,617,028.98	13,356,375,090.85
Manufacturing⁴							
Cement	268,171,034.74	213,425,599.73	182,124,303.94	203,516,395.78	310,412,600.78	320,277,222.72	1,497,927,157.69
Spirit	2,554,900.00	2,227,750.00	1,832,700.00	1,978,500.00	1,838,300.00	2,137,350.00	12,569,500.00
Beer	145,881,270.00	85,302,700.00	76,096,870.00	88,470,495.00	100,628,300.00	198,123,955.00	694,503,590.00
Stout	135,845,930.00	85,884,500.00	80,354,950.00	91,752,520.00	99,698,420.00	188,647,250.00	682,183,570.00
Malta	10,998,065.00	6,204,575.00	5,933,850.00	6,929,455.00	8,077,550.00	15,119,715.00	53,263,210.00
Soft Drink	77,184,370.00	66,801,640.00	51,386,520.00	62,495,650.00	78,681,490.00	122,351,980.00	458,901,650.00
Oil Paint	8,608,468.93	9,820,884.87	8,447,414.80	12,237,273.74	11,552,950.97	27,290,767.76	77,957,761.06
Water Paint	2,689,047.23	4,156,660.97	4,733,960.88	5,386,023.93	4,051,591.36	13,816,758.72	34,834,043.09
Varnish	1,227,565.80	1,498,463.82	1,419,184.80	1,776,205.94	1,502,098.02	2,014,002.36	9,437,520.74
Manoline Hair Grease	1,249,373.78	389,905.60	913,470.80	520,482.20	591,963.80	890,936.28	4,556,132.46
Thinner	1,247,755.52	1,520,160.18	1,385,895.28	1,110,496.31	987,875.02	1,803,161.36	8,055,343.67
Rubbing Alcohol	268,746.75	295,770.13	407,040.04	9,132,166.37	8,904,722.76	20,782,003.74	39,790,449.78
Soap	3,457,836.32	3,848,902.82	2,274,518.08	3,479,576.59	2,158,521.90	2,350,447.28	17,569,802.99
Chlorox	1,762,863.09	1,774,974.50	2,174,610.02	1,528,251.76	1,964,007.94	1,823,754.18	11,028,461.49
Nail	na	na	na	na	na	na	na
Candle	3,871,494.40	3,219,865.60	4,246,803.00	3,638,944.05	4,755,145.60	4,632,442.88	24,364,695.53
Mattresses	43,435,124.07	24,432,821.27	22,350,261.19	24,060,491.80	30,675,420.78	41,563,362.27	186,517,481.37
Finished Water ²	30,680,377.11	31,255,427.19	26,263,285.78	19,853,042.61	21,064,859.34	26,703,458.08	155,820,450.10
Mineral Water	21,658,475.00	20,142,310.00	18,308,045.00	24,660,175.00	37,944,005.00	37,178,770.00	159,891,780.00

1. Water from White Plains Treatment Plant.
2. Represents Export values
3. Represents quantity sold, not quantity produced

*Sources : Lands, Mines & Energy; Commerce & Industry; Forestry Development Authority (FDA);
Liberia Produce Marketing Corporation (LPMC) and Liberia Water & Sewer Corporation (LWSC), Monrovia, Liberia*

REAL SECTOR

CENTRAL BANK OF LIBERIA

2.3a: Key Output Value - 2014

Liberian dollars

Commodity	Jan-14	Feb-14	Mar-14	Apr-14	May-14	Jun-14	Jan - Jun Total
Agriculture							
Rubber ³	570,703,884.00	1,266,359,729.30	657,581,111.40	744,552,429.43	361,767,835.28	765,012,184.54	4,365,977,173.95
Cocoa Beans ⁴	139,680,799.22	93,243,962.96	55,344,842.00	57,405,239.50	37,438,321.91	11,196,753.12	394,309,918.70
Coffee ⁴	-	-	-	-	-	-	-
Round Logs ³	57,254.64	6,300,924.62	2,662,599.09	16,357,099.05	18,639,118.33	12,597,170.76	56,614,166.50
Sawn Timber ⁴	2,546,280.18	2,675,182.62	4,297,520.70	5,039,593.84	4,978,697.71	-	19,537,275.05
Fish ⁴	na	na	na	na	na	na	na
Mining⁴							
Gold	117,054,766.59	118,317,890.46	92,779,329.49	243,567,254.41	174,448,143.69	152,630,916.62	898,798,301.27
Diamond	198,866,427.89	151,387,048.16	230,675,985.97	123,072,726.83	407,652,330.68	168,253,256.54	1,279,907,776.06
Iron Ore	3,260,326,700.81	2,385,457,190.74	2,723,336,063.94	3,213,297,617.32	2,641,865,221.47	1,891,571,599.32	16,115,854,393.60
Manufacturing⁴							
Cement	383,285,448.00	274,383,086.64	556,760,672.52	490,133,379.84	416,302,663.92	364,627,704.00	2,485,492,954.92
Spirits	1,928,550.00	2,015,000.00	2,073,000.00	2,209,500.00	2,335,150.00	2,189,950.00	12,751,150.00
Beer	106,356,765.00	102,926,665.00	117,112,110.00	130,709,175.00	128,312,595.00	115,638,025.00	701,055,335.00
Stout	97,394,630.00	98,002,500.00	115,128,300.00	126,643,320.00	127,595,970.00	113,389,440.00	678,154,160.00
Malta	9,147,930.00	9,037,125.00	10,550,930.00	11,710,175.00	10,645,110.00	9,420,770.00	60,512,040.00
Soft Drink	82,936,965.00	84,030,765.00	92,463,585.00	104,764,185.00	100,886,685.00	99,490,605.00	564,572,790.00
Oil Paint	9,377,264.35	6,870,872.71	8,245,761.27	7,808,489.83	6,883,281.99	7,420,538.93	46,606,209.06
Water Paint	9,502,619.35	5,543,809.05	6,177,923.89	5,279,575.62	4,768,145.75	5,496,442.71	36,768,516.36
Varnish	840,505.28	670,164.30	926,112.69	639,645.39	1,365,035.76	1,132,201.80	5,573,665.22
Manoline Hair Grease	571,451.66	436,440.94	775,705.34	42,963.52	457,262.74	52,550.58	2,336,374.78
Thinner	1,240,095.23	657,062.12	478,940.88	737,482.68	610,405.07	703,678.14	4,427,664.12
Rubbing Alcohol	283,469.44	420,083.56	390,805.97	530,720.74	594,779.19	398,590.35	2,618,449.25
Soap	2,874,788.78	2,902,140.19	3,049,699.93	3,964,231.86	2,054,752.80	2,114,032.21	16,959,645.78
Chlorox	1,915,591.54	1,786,779.28	2,755,808.61	2,767,075.90	3,071,330.46	1,891,954.71	14,188,540.50
Nail	na	na	na	na	na	na	na
Candle	5,070,359.04	4,681,791.40	2,755,766.42	3,552,286.20	2,789,631.68	4,602,244.18	23,452,078.92
Mattresses	37,228,350.76	36,084,990.63	44,998,631.33	34,734,552.44	37,347,855.39	35,855,413.30	226,249,793.86
Finished Water ²	23,942,080.45	19,841,102.36	32,786,952.69	39,073,168.93	40,310,020.22	28,063,041.10	184,016,365.76
Mineral Water	30,722,940.00	29,455,200.00	27,902,800.00	31,970,310.00	29,798,065.00	23,958,610.00	173,807,925.00

1. Water from White Plains Treatment Plant.

2. Represents Export values

3. Represents quantity sold, not quantity produced

Sources: Lands, Mines & Energy; Commerce & Industry; Forestry Development Authority (FDA);

Liberia Produce Marketing Corporation (LPMC) and Liberia Water & Sewer Corporation (LWSC), Monrovia, Liberia

REAL SECTOR

CENTRAL BANK OF LIBERIA

2.3a: Key Output Value - 2014 Con't
Liberian dollars

Commodity	Jul-14	Aug-14	Sep-14	Oct-14	Nov-14	Dec-14	Jul-Dec	Grand
							Total	Total
Agriculture								
Rubber ³	1,090,230,240.00	555,457,033.20	802,048.00	611,563,680.00	277,976,457.00	539,979,438.90	3,076,008,897.10	7,441,986,071.05
Cocoa Beans ⁴	16,500,000.00	42,807,450.00	35,067,500.00	100,221,943.25	106,922,730.34	136,533,347.06	438,052,970.65	832,362,889.35
Coffee ⁴	na	na	na	na	na	na	na	na
Round Logs ³	15,829.00	71,407.00	12,072,133.00	46,911,189.00	21,361,946.10	167,274,428.09	247,706,932.19	304,321,098.69
Sawn Timber ⁴	2,225,037.00	1,064,600.00	na	4,018,542.00	3,632,868.00	3,905,356.00	14,846,403.00	34,383,678.05
Fish ⁴	na	na	na	na	na	na	na	na
Mining⁴								
Gold	179,980,325.36	104,373,921.45	58,758,884.99	112,693,502.00	126,811,278.00	155,057,318.00	737,675,229.80	1,636,473,531.07
Diamond	322,016,376.00	575,487,105.48	182,296,244.00	209,000,272.00	211,879,358.00	202,039,277.00	1,702,718,632.48	2,982,626,408.54
Iron Ore	1,247,815,360.00	318,412,800.00	2,304,818,649.00	1,755,684,385.00	2,425,901,676.00	137,070,560.00	8,189,703,430.00	24,305,557,823.60
Manufacturing⁴								
Cement	274,106,976.00	178,173,852.48	10,254,050.00	12,516,968.10	13,196,218.00	13,072,735.00	501,320,799.58	2,986,813,754.50
Spirits	1,372,500.00	1,329,100.00	983,250.00	1,607,000.00	1,840,910.00	3,713,450.00	10,846,210.00	23,597,360.00
Beer	132,891,470.00	50,181,870.00	59,774,530.00	70,943,385.00	87,036,830.00	160,872,975.00	561,701,060.00	1,262,756,395.00
Stout	135,795,330.00	63,159,600.00	81,124,170.00	93,442,920.00	103,105,200.00	168,472,320.00	645,099,540.00	1,323,253,700.00
Malta	10,870,865.00	4,533,105.00	5,469,365.00	6,631,380.00	7,916,660.00	9,681,420.00	45,102,795.00	105,614,835.00
Soft Drink	38,591,720.00	30,059,622.00	44,284,320.00	58,357,995.00	62,168,550.00	97,291,500.00	330,753,707.00	895,326,497.00
Oil Paint	6,801,960.00	2,842,932.93	2,329,200.25	9,292,676.25	14,023,463.19	15,461,246.30	50,751,478.92	97,357,687.98
Water Paint	5,939,032.00	1,929,258.18	2,031,633.50	4,109,868.75	6,438,004.65	8,486,318.78	28,934,115.86	65,702,632.22
Varnish	12,740,992.00	4,772,191.11	381,010.50	819,058.50	1,418,988.78	1,632,704.04	21,764,944.93	27,338,610.15
Manoline Hair Grease	977,724.00	419,782.50	na	-	-	124,906.32	1,522,412.82	3,858,787.60
Thinner	363,440.00	269,075.40	379,236.00	799,370.00	1,158,057.12	1,233,119.47	4,202,297.99	8,629,962.11
Rubbing Alcohol	2,728.00	-	622,089.00	1,986,359.72	1,280,932.00	764,890.64	4,656,999.36	7,275,448.60
Soap	590,480.00	433,257.00	2,048,111.00	1,343,537.33	1,115,979.48	1,583,844.36	7,115,209.16	24,074,854.94
Chlorox	366,608.00	82,920.00	6,033,300.00	7,251,562.27	7,350,884.08	3,523,890.64	24,609,164.99	38,797,705.49
Nail	na	na	na	na	na	na	na	na
Candle	2,817,408.00	4,434,727.44	130,975.00	1,034,533.50	1,020,927.60	1,318,455.60	10,757,027.14	34,209,106.06
Mattresses	3,078,240.00	2,549,955.84	28,887,434.49	32,510,301.01	38,821,732.57	71,385,591.78	177,233,255.67	403,483,049.53
Finished Water ²	34,998,152.00	26,386,421.00	24,041,886.00	958,972,576.00	130,931,117.00	161,850,245.00	1,337,180,397.00	1,521,196,762.76
Mineral Water	397,706.00	318,215.00	284,519.00	14,478,000.00	16,343,000.00	16,575,000.00	48,396,440.00	222,204,365.00

* Estimates

1. Water from White Plains Treatment Plant.

2. Represents Export values

3. Represents quantity sold, not quantity produced

Sources: Lands, Mines & Energy; Commerce & Industry; Forestry Development Authority (FDA).

Liberia Produce Marketing Corporation (LPMC) and Liberia Water & Sewer Corporation (LWSC), Monrovia, Liberia

REAL SECTOR

CENTRAL BANK OF LIBERIA

2.3bc: Key Output Value - 2015
Liberian dollars

Commodity	**Jan- 15	**Feb- 15	Mar - 15	**Apr - 15
Agriculture				
Rubber ³	754,574,589.50	425,182,030.00	160,740,970.00	94,406,835.00
Cocoa Beans ⁴	82,505,358.30	125,895,599.38	216,917,541.75	138,872,322.00
Coffee ⁴				
Round Logs ³	5,711,804.44		27,479,034.12	28,196,213.00
Sawn Timber ⁴	4,307,378.05	4,852,642.50	4,968,714.00	5,296,389.00
Fish ⁴				
Mining⁴				
Gold	154,630,987.95	104,224,046.00	84,220,097.00	155,649,150.00
Diamond	213,180,311.63	209,843,843.11	206,619,035.81	118,292,392.00
Iron Ore	486,271,400.00	633,775,350.00	1,601,478,645.00	958,736,768.00
Manufacturing⁴				
Cement	389,791,116.00	378,613,404.00	413,506,158.00	323,179,588.00
Spirits	1,327,445.00	1,490,000.00	1,722,950.00	2,207,635.00
Beer	107,858,560.00	113,816,160.00	120,818,765.00	97,527,473.00
Stout	122,210,760.00	127,565,310.00	129,260,370.00	94,029,171.00
Malta	10,806,825.00	10,701,360.00	9,599,985.00	10,082,304.00
Soft Drink	80,640,405.00	72,548,385.00	75,123,915.00	76,104,235.00
Oil Paint	42,866,799.65	58,984,805.86	48,806,630.78	35,778,498.00
Water Paint	27,830,204.00	37,329,565.00	33,545,930.55	12,883,827.00
Varnish	1,367,449.02	1,624,428.00	1,088,275.50	576,802.00
Manoline Hair Grease	460,191.10	412,782.50	334,620.00	109,824.00
Thinner	685,911.89	547,475.50	547,475.50	1,027,836.00
Rubbing Alcohol	1,043,885.04	856,999.00	953,667.00	1,407,734.00
Soap	1,803,718.54	1,769,873.10	1,523,002.39	233,763.00
Chlorox	2,829,695.72	3,054,134.20	2,802,662.20	6,535,382.00
Nail	na	na	na	na
Candle	631,311.52	729,509.67	874,052.16	592,934.00
Mattresses	8,216,081.96	8,884,490.55	8,908,294.20	7,853,385.00
Finished Water ²	32,804,517.29	35,145,032.98	42,157,288*	39,147,632.00
Mineral Water	12,445,000.00	11,646,000.00	13,599,000.00	16,398,086.00

* Revised ** Estimates

1. Water from White Plains Treatment Plant.

2. Represents export values

3. Represents quantity sold, not quantity produced

Sources: Lands, Mines & Energy; Commerce & Industry; Forestry Development Authority (FDA);

Liberia Produce Marketing Corporation (LPIMC) and Liberia Water & Sewer Corporation (LWSC), Monrovia, Liberia

GOVERNMENT FINANCE

3.1: Government Revenue 2013

Millions of Liberian Dollars

REVENUE SOURCES	2013					
	Jan-Feb	Mar-Apr	May-Jun	Jul-Aug	Sep-Oct	Nov-Dec*
A. Tax Revenue	4,559.38	4,765.09	5,143.71	4,833.33	4,934.67	4,543.91
International Trade Taxes	1,639.00	1,840.82	2,063.35	2,047.34	1,852.38	2,009.43
Taxes & Duties on Imports	1,632.77	1,833.25	2,057.49	2,042.96	1,846.76	2,004.06
Taxes on Exports	6.23	7.57	5.86	4.38	5.62	5.37
Taxes on Income & Profits	2,202.52	2,294.42	2,159.45	2,014.28	2,130.03	1,480.92
Individual Taxes on income & profits	1,694.81	2,292.71	1,743.75	1,469.67	1,865.42	1,364.67
Taxes Payable by Corporate Entities	507.70	-	415.70	519.81	241.26	116.25
Others	-	1.71	-	24.80	23.35	-
Sale Taxes on Goods & Services	670.38	521.70	835.59	737.95	576.42	1,021.89
Goods & Service Tax	22.34	311.93	332.80	411.15	351.21	311.35
Excise Taxes	155.43	66.24	58.43	72.22	50.36	27.47
Maritime Revenue	155.43	143.54	342.36	147.17	99.84	614.04
Others	104.36	293.35	102.00	107.40	75.02	69.03
Property & Real Estate Taxes	47.49	108.15	84.79	33.07	34.83	30.19
Other Tax Revenue ¹	-	-	0.53	0.69	341.00	1.47
B. Non-Tax Revenue	1,996.28	4,382.10	2,726.07	-	1,255.52	3,507.95
Charges & Other Administrative Fees	-	-	2,121.60	550.06	924.05	251.58
Grants	982.13	197.63	456.27	158.77	205.61	2,316.96
Others	1,014.15	4,184.47	148.21	-	125.86	939.40
Contingent Revenue	41.17	3,407.80	-	391.28	-	-
Borrowing	-	-	148.21	-	125.86	-
Revenue Carry Forward	-	-	-	303.34	-	-
Grand Total Revenue (A + B)	6,555.66	9,147.19	7,869.78	5,383.38	6,190.19	8,051.85

Source : Ministry of Finance, Monrovia, Liberia

¹ Tax Revenue not elsewhere classified

*Revised

GOVERNMENT FINANCE

CENTRAL BANK OF LIBERIA

3.1a: Government Revenue - 2014 & 2015

Millions of Liberian Dollars

REVENUE SOURCES	2014						2015	
	Jan-Feb	Mar-Apr	May-Jun	Jul-Aug	Sep-Oct	Nov-Dec	Jan-Feb	Mar-Apr
A. Tax Revenue	5,572.34	5,950.77	6,911.96	5,841.64	5,214.01	4,465.15	5,816.08	5,691.24
International Trade Taxes	8,003.77	2,311.90	2,817.66	2,392.33	1,946.18	1,916.14	2,425.93	2,605.44
Taxes & Duties on Imports	2,065.27	2,309.40	2,800.77	2,388.60	1,941.29	1,872.88	2,421.95	2,594.08
Taxes on Exports	5,938.50	2.50	16.89	3.73	4.89	43.26	3.99	11.36
Taxes on Income & Profits	2,187.60	2,527.87	2,105.72	2,803.57	2,243.43	1,600.26	2,077.90	2,379.99
Individual Taxes on income & profits	1,999.56	2,423.68	1,913.99	2,143.65	1,857.93	1,401.69	1,930.25	2,262.72
Taxes Payable by Corporate Entities	164.12	80.28	130.65	633.22	361.03	192.88	129.82	95.93
Others	23.93	23.91	61.08	26.70	24.47	5.70	17.83	21.34
Sale Taxes on Goods & Services	675.70	1,019.04	1,759.09	601.75	516.42	927.04	659.22	622.45
Goods & Service Tax	408.85	413.59	712.55	389.69	312.75	347.29	404.65	363.95
Excise Taxes	68.55	67.92	91.90	73.66	41.88	51.75	79.95	70.02
Maritime Revenue	99.00	205.81	134.75	88.92	96.91	468.05	86.61	88.20
Others	99.30	331.71	819.90	49.48	64.88	59.95	88.00	100.28
Property & Real Estate Taxes	76.66	91.79	173.29	44.00	22.87	19.11	87.90	83.37
Other Tax Revenue¹	561.16	0.17	56.20	-	485.11	2.59	565.13	-
B. Non-Tax Revenue	1,158.92	1,207.26	3,253.27	1,054.08	2,008.79	3,366.75	1,901.95	3,426.77
Charges & Other Administrative Fees	1,158.92	286.16	1,187.23	1,054.08	446.91	890.23	182.84	766.22
Grants	-	-	2,066.04	-	1,065.12	2,476.52	223.11	215.67
Others	-	921.01	-	-	496.76	-	1,496.00	2,444.87
Contingent Revenue	-	-	-	-	-	-	-	-
Borrowing	-	0.09	-	-	-	-	-	-
Revenue Carry Forward	-	-	-	-	-	-	-	-
Grand Total Revenue (A + B)	6,731.26	7,158.04	10,165.23	6,895.73	7,222.80	7,831.89	7,718.03	9,118.00

Source: Ministry of Finance, Monrovia, Liberia

¹ Tax Revenue not elsewhere classified

GOVERNMENT FINANCE

CENTRAL BANK OF LIBERIA

3.2: Government Expenditure 2013 - 2015

Millions of Liberian Dollars

Expenditure By Sectors	2013					
	First Edition	Second Edition	Third Edition	Fourth Edition	Fifth Edition	Sixth Edition
PUBLIC ADMINISTRATIVE SERVICES SECTOR	1,400.03	2,251.22	2,472.19	1,004.31	1,568.50	2,311.92
MUNICIPAL GOVERNMENT	205.38	340.02	905.10	89.48	152.20	256.23
TRANSPARENCY AND ACCOUNTABILITY	241.32	339.33	243.47	169.68	208.13	473.75
SECURITY AND THE RULE OF LAW	1,110.28	822.56	1,108.66	672.59	1,048.81	995.11
HEALTH	848.53	936.50	867.60	548.14	414.93	583.46
SOCIAL DEVELOPMENT SERVICES	115.89	146.57	141.75	41.38	54.50	114.83
EDUCATION	907.34	1,027.73	1,096.36	554.39	861.99	1,054.75
ENERGY AND ENVIRONMENT	145.19	182.22	189.12	66.42	89.39	227.69
AGRICULTURE	74.28	90.27	97.92	63.47	55.12	58.74
INFRASTRUCTURE AND BASIC SERVICES SECTOR	214.89	150.26	165.57	76.40	120.86	284.43
INDUSTRY AND COMMERCE SECTOR	186.55	251.76	401.38	165.51	243.89	238.91
NATIONAL CLAIMS	589.36	1,931.58	1,064.96	114.11	147.64	1,075.34
CENTRAL BANK OF LIBERIA	64.33	67.11	68.20	119.39	91.67	72.00
TOTAL	6,103.37	8,537.14	8,822.28	3,685.24	5,057.64	7,747.16

Expenditure By Sectors	2014						2015	
	First Edition	Second Edition	Third Edition	Fourth Edition	Fifth Edition	Sixth Edition	First Edition	Second Edition
PUBLIC ADMINISTRATIVE SERVICES SECTOR	1,979.34	1,582.93	2,292.04	1,939.06	1,869.83	2,742.84	1,772.92	2,818.79
MUNICIPAL GOVERNMENT	650.97	533.81	175.24	384.02	172.41	368.02	212.82	177.33
TRANSPARENCY AND ACCOUNTABILITY	244.10	246.32	322.28	310.78	558.00	688.45	256.13	273.05
SECURITY AND THE RULE OF LAW	870.45	1,169.60	1,165.99	1,261.98	1,076.64	1,057.57	1,047.99	1,452.22
HEALTH	698.52	879.58	839.56	581.01	670.16	784.07	1,001.81	891.53
SOCIAL DEVELOPMENT SERVICES	70.23	97.75	156.25	110.11	110.01	93.08	121.97	156.12
EDUCATION	672.97	987.54	1,167.77	1,096.00	806.50	799.72	802.64	823.43
ENERGY AND ENVIRONMENT	97.35	123.07	138.21	96.68	114.24	149.33	172.19	202.68
AGRICULTURE	92.16	94.06	82.36	68.29	65.45	69.13	82.12	68.74
INFRASTRUCTURE AND BASIC SERVICES SECTOR	156.55	148.30	198.50	141.95	156.49	1,176.97	1,498.26	1,035.21
INDUSTRY AND COMMERCE SECTOR	155.73	113.04	232.21	428.12	203.28	198.96	209.26	274.32
NATIONAL CLAIMS	1,970.68	1,360.86	318.27	160.70	514.27	1,500.92	1,386.06	-
CENTRAL BANK OF LIBERIA	112.81	189.73	157.83	75.71	73.76	75.71	72.27	-
TOTAL	7,771.87	7,526.58	7,246.51	6,654.39	6,391.03	9,704.78	8,636.44	8,173.43

GOVERNMENT FINANCE

3.2: Government Expenditure 2013 - 2015

Millions of Liberian Dollars

Expenditure by Codes	2014					
	First Edition	Second Edition	Third Edition	Fourth Edition	Fifth Edition	Sixth Edition
A. Current Expenditure	6,443.39	7,300.97	7,127.03	6,454.10	6,218.60	8,500.60
Salaries, & Allowances	2,271.99	2,840.77	2,816.04	3,009.10	3,227.49	3,015.69
Expenditure on Goods & Services	2,475.76	2,773.47	3,137.70	2,281.20	2,336.82	4,451.64
Subsidies	-	-	-	-	-	-
Grants	1,681.18	1,671.61	1,157.73	1,153.81	630.90	1,015.95
Social Benefits	14.46	15.12	15.56	10.00	23.39	17.32
Others	-	-	-	-	-	-
B. Capital Expenditure	1,283.67	130.57	68.67	149.06	78.54	1,087.96
Depreciation	1.62	1.98	-	-	-	-
Acquisition of Fixed Assets	1,262.84	107.93	68.50	148.93	78.54	1,087.96
Others	19.20	20.66	0.16	0.13	-	-
C. Interest on Debt & Other Charges	44.82	95.05	50.81	51.23	93.89	116.21
On Domestic & Foreign Debts (Residents)	-	-	-	-	37.34	5.70
To Non-Residents	44.82	95.05	50.81	51.23	56.54	110.51
Others	-	-	-	-	-	-
D. Other Expenditure	-	-	-	-	-	-
Total Expenditures	7,771.87	7,526.58	7,246.51	6,654.39	6,391.03	9,704.78

Expenditure by Codes	2015	
	First Edition	Second Edition
A. Current Expenditure	6,893.12	6,671.91
Salaries, & Allowances	2,607.82	3,146.47
Expenditure on Goods & Services	3,683.97	2,496.59
Subsidies	-	-
Grants	584.17	1,015.62
Social Benefits	17.16	13.22
Others	-	-
B. Capital Expenditure	1,685.86	982.97
Depreciation	-	-
Acquisition of Fixed Assets	1,684.68	957.54
Others	1.17	25.44
C. Loan and Interest and other charges	57.46	518.56
On Domestic & Foreign Debts (Residents)	4.58	-
To Non-Residents	52.88	-
Others	-	-
Domestic Debts Repayment	-	234.96
External Debts Repayment	-	0.42
Interest on other Domestic Debt	-	201.31
Interest on Foreign Debt	-	81.86
Deficit Financing-CBL	-	-
Interest on Treasury Bills	-	-
Others	-	-
D. Other Expenditure	-	-
Total Expenditures	8,636.44	8,173.43

Source: Ministry of Finance, Republic of Liberia

* Revised

**Preliminary

3.3: Liberia's Overall Debt Position

2013 - 2015

(In Millions US\$)

Creditors	2013			
	At End-March	As At End-June	At End-September	At End-December
Multilateral	157.23	161.57	187.25	215.46
Bilateral	133.23	122.56	122.76	122.38
Commercial Creditors	-	-	-	-
Total External Debt	290.45	284.13	310.01	337.84
Suppliers' Credit (Valid Claims)	1.94	1.94	1.94	1.93
Salary & Allowances	3.68	3.68	5.00	5.00
Financial Institutions	267.20	289.52	286.55	285.78
Pre- NTGL Salary Arrears	1.32	1.32	-	-
Others	0.87	-	-	-
Total Domestic Debt	275.01	296.46	293.49	292.71
Total Public Debt	565.46	580.59	603.50	630.55

Creditors	2014			
	At End-March	At End-June	At End-September	At End-December
Multilateral	219.97	233.00	275.13	338.26
Bilateral	122.27	121.70	121.34	120.53
Commercial Creditors	-	-	-	-
Total External Debt	342.24	354.70	396.47	458.78
Suppliers' Credit (Valid Claims)	1.92	1.90	1.94	1.94
Salary & Allowances	3.68	3.70	5.00	3.68
Financial Institutions	294.09	286.60	291.42	283.72
Pre- NTGL Salary Arrears	1.32	1.30	-	1.32
Others	-	-	-	-
Total Domestic Debt	301.01	293.50	298.36	290.66
Total Public Debt	643.25	648.20	694.83	749.45

Creditors	2015	
	At End-February	At End-March
Multilateral	340.12	426.81
Bilateral	120.53	120.53
Commercial Creditors	-	-
Total External Debt	460.73	547.33
Suppliers' Credit (Valid Claims)	-	-
Salary & Allowances	-	3.68
Financial Institutions	283.53	278.94
Pre- NTGL Salary Arrears	1.32	1.32
Others	3.68	-
Total Domestic Debt	288.53	283.94
Total Public Debt	749.26	831.28

Source: Ministry of Finance, Republic of Liberia

EXTERNAL TRADE

CENTRAL BANK OF LIBERIA

4.1: Exports and Imports 2013- 2015

(Millions of United States Dollars)

Period	2013		2014		2015		Balance of Trade		
	Exports	Imports	Exports	Imports	Exports	Imports	2013	2014	2015
Jan	26.40	171.50	50.98	74.55	21.04	81.61	(145.10)	(23.56)	(60.57)
Feb	39.40	48.70	55.81	104.43	20.55	111.25	(9.30)	(48.62)	(90.70)
Mar	57.90	98.30	45.75	85.49	25.80	164.50	(40.40)	(39.74)	(138.70)
Apr	36.50	86.30	54.51	99.52	28.75	5.00	(49.80)	(45.02)	23.75
May	81.70	89.60	53.44	62.15			(7.90)	(8.71)	-
Jun	42.30	106.10	60.87	79.38			(63.80)	(18.51)	-
Jul	39.10	111.98	51.73	112.24			(72.88)	(60.51)	-
Aug	42.00	97.50	60.50	87.69			(55.50)	(27.19)	-
Sep	31.13	98.95	46.09	96.10			(67.82)	(50.01)	-
Oct	50.75	77.21	34.42	68.80			(26.47)	(34.38)	-
Nov	59.57	77.80	40.80	79.00			(18.23)	(38.20)	-
Dec	52.48	85.88	28.00	96.50			(33.40)	(68.50)	-
Total	559.2	1,149.8	582.9	1,045.8	96.1	362.3	(590.6)	(463.0)	(266.2)

4.1b: Commodity Composition of Exports -2013

(Thousands of United States Dollars)

Commodity	Jan	Feb	Mar	Apr	May	Jun	Jan-Jun Total
Rubber	1,118.24	2,730.72	23,826.82	2,745.07	21,668.18	12,224.44	64,313.46
Cocoa beans	274.50	40.00	-	105.00	367.50	736.50	1,523.50
Coffee	-	32.50	32.50	-	-	-	65.00
Round Logs	366.27	250.00	1,626.99	3,097.60	187.20	2,639.16	8,167.22
Iron Ore	19,610.96	25,089.98	24,780.48	26,062.57	48,325.67	14,342.68	158,212.34
Gold	2,216.43	2,277.90	2,295.68	1,532.53	1,886.93	1,268.02	11,477.49
Diamond	1,916.74	972.51	1,174.11	1,286.12	2,536.90	1,095.32	8,981.71
Other Commodities	911.5	11219.31031	4,124.7	1,691.5	6,731.7	10,011.9	34,690.55
Total	26,414.6	42,612.9	57,861.2	36,520.4	81,704.1	42,318.0	287,431.26

Commodity	Jul	Aug	Sep	Oct	Nov	Dec	Jul-Dec Total	Grand Total
Rubber	-	18,237.51	9,913.84	2,502.74	27,895.58	9,934.85	68,484.51	132,797.97
Cocoa beans	631.25	-	787.00	1,550.00	538.28	451.25	3,957.78	5,481.28
Coffee	-	9.00	-	-	-	-	9.00	74.00
Round Logs	2,214.49	2,583.58	-	530.42	-	13.34	5,341.82	13,509.04
Iron Ore	27,058.26	17,465.55	17,612.14	39,575.34	28,136.15	36,988.48	166,835.92	325,048.26
Gold	1,955.14	1,908.18	1,171.57	2,026.15	961.91	1,109.40	9,132.35	20,609.84
Diamond	1,237.75	1,319.97	787.02	1,468.53	1,223.57	2,156.53	8,193.36	17,175.07
Other Commodities	5,794.54	361.07	756.59	2,898.37	669.98	1,733.67	12,214.22	46,904.76
Total	38,891.4	41,884.8	31,028.2	50,551.5	59,425.5	52,387.5	274,168.96	561,600.22

Source:Ministry of Commerce & Industry and Ministry of Lands, Mines and Energy, Monrovia, Liberia

EXTERNAL TRADE

CENTRAL BANK OF LIBERIA

4.1b: Commodity Composition of Exports Value-2014 & 2015

(Thousands of United States Dollars)

Commodity	Jan	Feb	Mar	Apr	May	Jun	Jan-Jun Total
Rubber	6,829.05	15,561.10	7,793.09	8,593.76	4,178.91	11,945.93	54,901.84
Cocoa beans	362.50	846.00	393.75	-	375.00	-	1,977.25
Coffee	-	-	-	-	7.23	-	7.23
Round Logs	-	5,830.00	1,126.04	3,858.00	3,669.89	116.82	14,600.75
Iron Ore	39,013.12	29,312.57	32,274.66	37,096.49	30,517.10	43,913.04	212,126.98
Gold	1,400.68	1,453.89	1,099.54	2,811.91	2,015.11	1,710.73	10,491.86
Diamond	2,379.64	1,860.25	2,733.78	1,420.83	4,708.93	1,885.82	14,989.26
Other Commodities	996.26	942.74	331.31	723.28	7,968.70	1,297.75	12,260.05
Total	50,981.26	55,806.56	45,752.17	54,504.27	53,440.86	60,870.10	321,355.21

Commodity	Jul	Aug	Sep	Oct	Nov	Dec	Jul-Dec Total	Grand Total
Rubber	12,388.98	6,698.71	9,492.12	9,347.70	5,124.69	8,310.01	51,362.21	106,264.06
Cocoa beans	187.50	516.25	415.00	346.25	723.50	733.75	2,922.25	4,899.50
Coffee	-	-	-	-	-	18.00	18.00	25.23
Round Logs	2,896.08	394.24	3,024.23	549.12	135.78	2,515.25	9,514.71	24,115.46
Iron Ore	29,094.84	43,956.45	27,275.96	20,777.33	28,941.80	11,657.25	161,703.64	373,830.62
Gold	2,045.23	1,258.73	695.37	133.65	1,512.90	1,876.98	7,522.86	18,014.72
Diamond	3,659.28	6,940.27	2,157.35	2,473.39	2,527.79	2,445.70	20,203.78	35,193.03
Other Commodities	1,454.10	731.03	3,031.00	795.53	1,808.11	490.52	8,310.30	20,570.35
Total	51,726.01	60,495.69	46,091.04	34,422.98	40,774.57	28,047.46	261,557.75	471,389.49

4.1b: Commodity Composition of Exports Value -2015

(Thousands of United States Dollars)

Commodity	Jan	Feb	Mar	Apr
Rubber	8,969.15	5,031.74	1,902.26	3,603.66
Cocoa beans	587.50	387.69	1,072.50	355.00
Coffee	-	-	-	-
Round Logs	955.00	3,298.99	325.20	4,362.39
Iron Ore	5,780.00	7,500.30	18,952.41	24,154.77
Gold	1,838.00	1,233.42	996.69	865.82
Diamond	2,533.94	2,483.36	2,445.20	3,510.24
Other Commodities	377.97	616.53	697.21	513.52
Total	21,041.55	20,552.02	26,391.46	37,365.40

Source: Ministry of Commerce & Industry and Ministry of Lands, Mines and Energy, Monrovia, Liberia

4.2: Commodity Composition of Exports Volume -2013

(In volumes of their respective units of measurements)

Commodity	Jan	Feb	Mar	Apr	May	Jun	Jan-Jun Total
Rubber (Mt)	875.10	1,275.64	14,972.23	741.62	16,194.04	6,098.40	40,157.03
Cocoa beans (Mt)	875.10	1,275.64	1,003.48	741.62	675.36	6,098.40	10,669.60
Coffee (Mt)	420.00	50.00	-	105.00	525.00	3,095.00	4,195.00
Round Logs (M3)	1,593.08	1,000.00	11,248.85	3,490.00	4,505.78	14,822.16	36,659.87
Iron Ore (Mt)	297,000.00	482,000.00	398,500.00	344,375.00	649,000.00	212,000.00	2,382,875.00
Gold (Ounces)	4,683.49	2,784.73	3,938.02	3,178.22	7,488.50	4,097.98	26,170.94
Diamond (Carats)	-	100.00	100.00	-	-	-	200.00
Other Commodities*	1,731.93	1,822.44	1,887.17	1,308.90	1,727.45	1,198.50	9,676.39
Total	307,178.70	490,308.45	431,649.75	353,940.37	680,116.12	247,410.44	2,510,603.83

Commodity	Jul	Aug	Sep	Oct	Nov	Dec	Jul-Dec Total	Grand Total
Rubber (Mt)	-	14,707.29	5,308.06	1,108.90	21,796.73	5,443.20	48,364.18	88,521.21
Cocoa beans (Mt)	-	604.80	4,838.40	1,108.90	1,000.00	5,443.20	12,995.30	23,664.90
Coffee (Mt)	875.00	-	1,340.00	2,425.00	704.10	575.00	5,919.10	10,114.10
Round Logs (M3)	1,750.00	5,618.54	-	3,193.13	-	4,032.00	14,593.68	51,253.55
Iron Ore (Mt)	491,600.00	331,000.00	255,800.00	555,650.00	407,670.00	372,663.41	2,414,383.41	4,797,258.41
Gold (Ounces)	1,725.55	4,979.54	877.17	5,174.67	3,489.52	5,402.31	21,648.76	47,819.70
Diamond (Carats)	-	15.00	-	-	-	-	15.00	215.00
Other Commodities*	2,034.74	1,873.47	1,105.58	2,020.92	981.76	1,175.29	9,191.76	18,868.15
Total	497,985.29	358,798.64	269,269.21	570,681.52	435,642.11	394,734.41	2,527,111.19	4,556,237.08

*Includes scrap metals

Sources: Ministry of Commerce & Industry and Ministry of Lands, Mines and Energy, Monrovia, Liberia

4.2a: Commodity Composition of Exports Volume -2014

(In volumes of their respective units of measurements)

Commodity	Jan	Feb	Mar	Apr	May	Jun	Jan-Jun
							Total
Rubber (Mt)	2,873.20	7,966.70	3,744.58	4,221.79	2,158.10	6,607.02	27,571.38
Cocoa beans (Mt)	500.00	1,120.00	525.00	-	500.00	-	2,645.00
Coffee (Mt)	-	-	-	-	17.00	-	17.00
Round Logs (M3)	-	30,802.03	3,381.22	20,600.28	26,253.64	675.29	81,712.46
Iron Ore (Mt)	541,430.00	409,000.00	490,000.00	629,000.00	523,650.00	473,507.00	3,066,587.00
Gold (Ounces)	1,494.76	1,496.91	1,066.99	2,824.32	2,036.95	1,775.94	10,695.87
Diamond (Carats)	6,327.80	4,575.70	6,719.88	3,424.47	11,719.46	4,411.24	37,178.55
Other Commodities	4,230.00	1,800.00	1,800.00	2,970.00	2,862.00	2,160.00	15,822.00
Total	556,855.76	456,761.34	507,237.67	663,040.86	569,197.15	489,136.49	3,242,229.26

Commodity	Jul	Aug	Sep	Oct	Nov	Dec	Jul-Dec	Grand
							Total	Total
Rubber (Mt)	7,940.42	3,719.39	5,452.56	7,237.44	3,316.35	6,536.49	34,202.65	61,774.03
Cocoa beans (Mt)	250.00	625.00	600.00	425.00	910.00	950.00	3,760.00	6,405.00
Coffee (Mt)	-	-	-	-	-	60.00	60.00	77.00
Round Logs (M3)	13,311.73	2,124.46	13,959.65	-	500.91	12,897.83	42,794.57	124,507.03
Iron Ore (Mt)	303,166.00	474,538.00	331,542.00	259,292.10	395,598.22	359,000.00	2,123,136.32	5,189,723.32
Gold (Ounces)	2,032.00	1,284.99	726.88	1,478.88	1,674.07	2,044.91	9,241.73	19,937.60
Diamond (Carats)	7,880.73	7,922.46	4,821.95	5,331.90	5,893.59	5,791.21	37,641.84	74,820.39
Other Commodities*	2,970.00	3,800.00	1,854.00	4,970.00	972.00	2,070.00	16,636.00	32,458.00
Total	337,550.88	494,014.30	358,957.04	278,735.32	408,865.14	389,350.43	2,267,473.11	4,197,395.34

4.2b: Commodity Composition of Exports Volume -2015

(In volumes of their respective units of measurements)

Commodity	Jan	Feb	Mar	Apr
Rubber (Mt)	7,139.65	3,628.80	1,307.45	69.81
Cocoa beans (Mt)	750.00	493.13	600.00	50,498.50
Coffee (Mt)	-	-	-	-
Round Logs (M3)	2,175.26	17,950.70	-	-
Iron Ore (Mt)	85,000.00	219,000.00	648,000.00	1,517,000.00
Gold (Ounces)	1,988.72	1,269.32	1,109.91	878.03
Diamond (Carats)	8,193.41	5,875.09	7,352.49	7,476.00
Other Commodities*	2,970.00	900.00	900.00	13,059,891.16
Total	108,217.04	249,117.04	659,269.85	14,635,813.49

Sources: Ministry of Commerce & Industry and Ministry of Lands, Mines and Energy, Monrovia, Liberia

*includes scrap metals

EXTERNAL TRADE

CENTRAL BANK OF LIBERIA

4.3: Commodity Composition of Imports in CIF values

Thousands of United States Dollars

Commodity Composition of Imports in CIF values - 2013

Commodity	Jan	Feb	Mar	Apr	May	Jun	Jan-Jun
							Total
Food and Live Animals	5,725.13	17,344.12	7,731.42	12,853.39	11,248.10	8,128.22	63,030.38
O/w Commercial Rice	375.09	11,324.70	140.64	7,324.80	2,605.36	50.08	21,820.67
O/w Non-Commercial Rice	-	-	-	-	-	10.67	10.67
Beverage and Tobacco	8,471.81	7,055.71	8,695.62	9,538.92	6,481.97	8,070.08	48,314.10
Crude Materials	1,340.75	1,352.45	1,011.34	1,504.64	1,228.70	1,308.30	7,746.18
Mineral, Fuels, Lubricants	21,256.31	35,381.83	32,946.00	37,794.63	11,028.79	25,365.70	163,773.26
O/W Petroleum Products	18,174.57	30,523.69	27,093.81	34,252.16	8,308.25	21,153.31	139,505.79
Animal and Vegetable Oil	1,400.09	1,227.52	1,005.26	1,652.79	945.05	5,176.25	11,406.95
Chemicals and Related Products	7,381.57	7,550.29	6,440.63	6,005.71	5,607.57	5,322.22	38,307.99
Manufactured Products	7,967.20	12,172.40	7,069.50	10,366.07	8,031.19	8,429.03	54,035.40
Machinery & Transport Equipment	18,257.93	20,165.37	19,138.36	17,550.36	15,986.72	15,105.12	106,203.87
Miscellaneous Articles ¹	2,744.69	2,176.38	1,454.79	2,256.64	1,595.40	2,479.33	12,707.23
Total	74,545.48	104,426.07	85,492.91	99,523.13	62,153.49	79,384.27	505,525.36

Commodity	Jul	Aug	Sep	Oct	Nov	Dec	Jul-Dec	Grand
							Total	Total
Food and Live Animals	7,873.95	12,665.81	10,936.94	13,876.08	17,734.29	19,312.04	82,399.12	145,429.50
O/w Commercial Rice	121.13	5,328.23	4,475.81	6,254.19	11,572.59	9,096.75	36,848.70	58,669.37
O/w Non-Commercial Rice	43.98	28.29	9.98	18.79	-	28.78	129.81	140.48
Beverage and Tobacco	10,777.96	7,108.75	6,605.19	6,615.86	6,735.93	8,216.47	46,060.17	94,374.27
Crude Materials	1,900.65	1,357.06	820.47	725.82	1,296.99	2,405.73	8,506.71	16,252.89
Mineral, Fuels, Lubricants	34,737.75	21,807.21	34,671.90	10,725.49	15,860.85	5,705.07	123,508.27	287,281.54
O/W Petroleum Products	27,907.47	17,444.15	30,218.48	8,690.99	12,381.63	4,534.55	101,177.27	240,683.05
Animal and Vegetable Oil	583.92	960.72	942.04	1,561.06	995.65	5,415.35	10,458.75	21,865.70
Chemicals and Related Products	9,896.23	6,709.00	5,800.51	6,924.02	7,300.95	9,817.82	46,448.53	84,756.51
Manufactured Products	21,229.13	16,211.58	8,753.61	7,260.65	6,046.96	13,876.93	73,378.85	127,414.25
Machinery & Transport Equipment	21,171.41	18,165.22	25,779.33	19,052.91	21,093.06	28,504.59	133,766.51	239,970.38
Miscellaneous Articles ¹	4,066.43	2,700.12	1,789.38	2,034.50	1,956.13	3,260.05	15,806.62	28,513.85
Total	112,237.43	87,685.47	96,099.37	68,776.39	79,020.81	96,514.05	540,333.52	1,045,858.88

Sources: Ministry of Commerce & Industry and Ministry of Finance, Monrovia, Liberia.

EXTERNAL TRADE

CENTRAL BANK OF LIBERIA

4.3a: Commodity Composition of Imports in CIF values*Thousands of United States Dollars***Commodity Composition of Imports in CIF values - 2014**

Commodity	Jan	Feb	Mar	Apr	May	Jun	Jan-Jun
							Total
Food and Live Animals	5,725.13	17,344.12	7,731.42	12,853.39	11,248.10	8,128.22	63,030.38
O/w Commercial Rice	375.09	11,324.70	140.64	7,324.80	2,605.36	50.08	21,820.67
O/w Non-Commercial Rice	-	-	-	-	-	10.67	10.67
Beverage and Tobacco	8,471.81	7,055.71	8,695.62	9,538.92	6,481.97	8,070.08	48,314.10
Crude Materials	1,340.75	1,352.45	1,011.34	1,504.64	1,228.70	1,308.30	7,746.18
Mineral, Fuels, Lubricants	21,256.31	35,381.83	32,946.00	37,794.63	11,028.79	25,365.70	163,773.26
O/W Petroleum Products	18,174.57	30,523.69	27,093.81	34,252.16	8,308.25	21,153.31	139,505.79
Animal and Vegetable Oil	1,400.09	1,227.52	1,005.26	1,652.79	945.05	5,176.25	11,406.95
Chemicals and Related Products	7,381.57	7,550.29	6,440.63	6,005.71	5,607.57	5,322.22	38,307.99
Manufactured Products	7,967.20	12,172.40	7,069.50	10,366.07	8,031.19	8,429.03	54,035.40
Machinery & Transport Equipment	18,257.93	20,165.37	19,138.36	17,550.36	15,986.72	15,105.12	106,203.87
Miscellaneous Articles ¹	2,744.69	2,176.38	1,454.79	2,256.64	1,595.40	2,479.33	12,707.23
Total	74,545.48	104,426.07	85,492.91	99,523.13	62,153.49	79,384.27	505,525.36

Commodity	Jul	Aug	Sep	Oct	Nov	Dec	Jul-Dec	Grand
							Total	Total
Food and Live Animals	7,873.95	12,665.81	10,936.94	13,876.08	17,734.29	19,312.04	82,399.12	145,429.50
O/w Commercial Rice	121.13	5,328.23	4,475.81	6,254.19	11,572.59	9,096.75	36,848.70	58,669.37
O/w Non-Commercial Rice	43.98	28.29	9.98	18.79	-	28.78	129.81	140.48
Beverage and Tobacco	10,777.96	7,108.75	6,605.19	6,615.86	6,735.93	8,216.47	46,060.17	94,374.27
Crude Materials	1,900.65	1,357.06	820.47	725.82	1,296.99	2,405.73	8,506.71	16,252.89
Mineral, Fuels, Lubricants	34,737.75	21,807.21	34,671.90	10,725.49	15,860.85	5,705.07	123,508.27	287,281.54
O/W Petroleum Products	27,907.47	17,444.15	30,218.48	8,690.99	12,381.63	4,534.55	101,177.27	240,683.05
Animal and Vegetable Oil	583.92	960.72	942.04	1,561.06	995.65	5,415.35	10,458.75	21,865.70
Chemicals and Related Products	9,896.23	6,709.00	5,800.51	6,924.02	7,300.95	9,817.82	46,448.53	84,756.51
Manufactured Products	21,229.13	16,211.58	8,753.61	7,260.65	6,046.96	13,876.93	73,378.85	127,414.25
Machinery & Transport Equipment	21,171.41	18,165.22	25,779.33	19,052.91	21,093.06	28,504.59	133,766.51	239,970.38
Miscellaneous Articles ¹	4,066.43	2,700.12	1,789.38	2,034.50	1,956.13	3,260.05	15,806.62	28,513.85
Total	112,237.43	87,685.47	96,099.37	68,776.39	79,020.81	96,514.05	540,333.52	1,045,858.88

Sources: Ministry of Commerce & Industry and Ministry of Finance, Monrovia, Liberia.

EXTERNAL TRADE

4.3b: Commodity Composition of Imports in CIF values

Thousands of United States Dollars

Commodity	2015			
	Jan	Feb	Mar	Apr
Food and Live Animals	17,654.39	31,351.85	24,120.88	43,451.95
O/w Commercial Rice	657.13	13,831.11	-	24,666.75
O/w Non-Commercial Rice	20.34	16.54	-	1,227.85
Beverage and Tobacco	1,854.92	2,921.96	2,402.72	2,077.48
Crude Materials	1,407.76	1,419.41	2,126.68	1,724.09
Mineral, Fuels, Lubricants	14,630.13	26,809.02	45,425.83	34,080.09
O/W Petroleum Products	10,607.36	20,073.52	-	29,180.17
Animal and Vegetable Oil	1,834.84	1,425.26	1,449.56	4,781.56
Chemicals and Related Products	7,642.34	11,390.56	21,200.23	13,741.91
Manufactured Products	9,440.36	11,347.46	19,739.42	10,910.80
Machinery & Transport Equipment	24,329.72	21,847.77	43,159.70	32,766.67
Miscellaneous Articles ¹	2,811.50	2,731.98	-	-
Total	81,605.95	111,245.27	159,625.03	143,534.56

Sources: Ministry of Commerce & Industry and Ministry of Finance, Monrovia, Liberia.

EXTERNAL TRADE

CENTRAL BANK OF LIBERIA

4.4: Volume of Imports of Petroleum Products 2013
(Volume in gals.)

2013	Premium	Diesel	Kerosene	Jet fuel	Total
Jan	5,385,995.65	4,909,317.13	-	882,710.48	11,178,023.26
Feb	3,662,598.55	772,996.53	-	-	4,435,595.08
Mar	3,710,678.20	2,338,718.33	-	444,514.30	6,493,910.83
Apr	2,063,536.62	4,991,336.17	-	-	7,054,872.79
May	1,700,309.84	3,678,388.65	-	441,522.11	5,820,220.60
Jun	5,297,704.40	2,286,295.01	-	437,941.25	8,021,940.66
Jul	5,863,373.72	3,155,371.79	-	364,291.27	9,383,036.78
Aug	910,188.90	3,670,850.88	-	463,182.28	5,044,222.06
Sep	3,013,907.15	3,245,843.35	-	372,103.08	6,631,853.58
Oct	1,284,931.19	5,023,796.20	-	447,901.28	6,756,628.67
Nov	918,186.82	920,331.35	-	-	1,838,518.17
Dec	6,651,522.56	3,809,980.21	-	1,044,540.34	11,506,043.11
Total	40,462,933.60	38,803,225.61	-	4,898,706.39	84,164,865.60

4.4a: Volume of Imports of Petroleum Products - 2014
(Volume in gals.)

2014	Premium	Diesel	Kerosene	Jet fuel	Total
Jan	1,479,959.67	3,686,563.45	-	410,326.67	5,576,849.79
Feb	1,771,700.23	6,791,181.38	-	1,370,235.06	9,933,116.67
Mar	4,217,230.03	1,903,850.51	-	919,670.89	7,040,751.43
Apr	1,840,927.60	8,063,264.74	-	755,984.00	10,660,176.34
May	1,391,091.59	1,194,211.58	-	-	2,585,303.17
Jun	2,934,590.99	2,329,813.18	-	2,557,644.98	7,822,049.15
Jul	2,513,184.30	5,125,092.08	-	865,314.56	8,503,590.94
Aug	2,925,861.21	2,583,059.93	-	371,122.58	5,880,043.72
Sep	1,123,413.24	7,668,343.32	-	-	8,791,756.56
Oct	185,747.40	2,126,616.63	-	307.00	2,312,671.03
Nov	555,710.03	2,538,182.98	-	924,816.01	4,018,709.02
Dec	365,397.94	1,078,262.29	-	-	1,443,660.23
Total	21,304,814.23	45,088,442.07	-	8,175,421.75	74,568,678.05

4.4b: Volume of Imports of Petroleum Products - 2015
(Volume in gals.)

2015	Premium	Diesel	Kerosene	Jet fuel	Total
Jan	1,823,451.76	460,500.00	-	-	2,283,951.76
Feb	3,683,797.33	3,661,013.99	-	1,330,927.00	8,675,738.32
Mar	1,382,058.54	1,774,443.68	-	-	3,156,502.22
Apr	2,104,875.27	1,696,134.29	-	1,696,134.29	5,497,143.85
Total	8,994,182.90	7,592,091.96	-	3,027,061.29	10,959,690.08

Source: Ministry of Commerce & Industry and Central Bank of Liberia