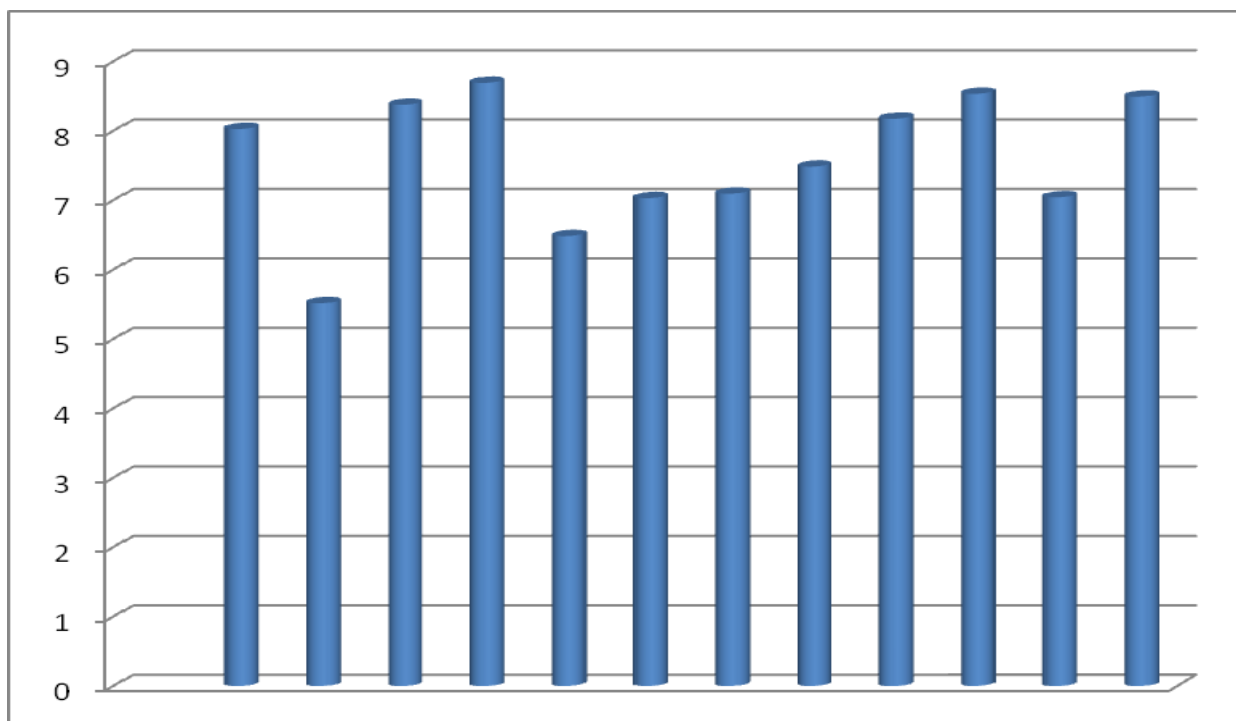




CENTRAL BANK OF LIBERIA



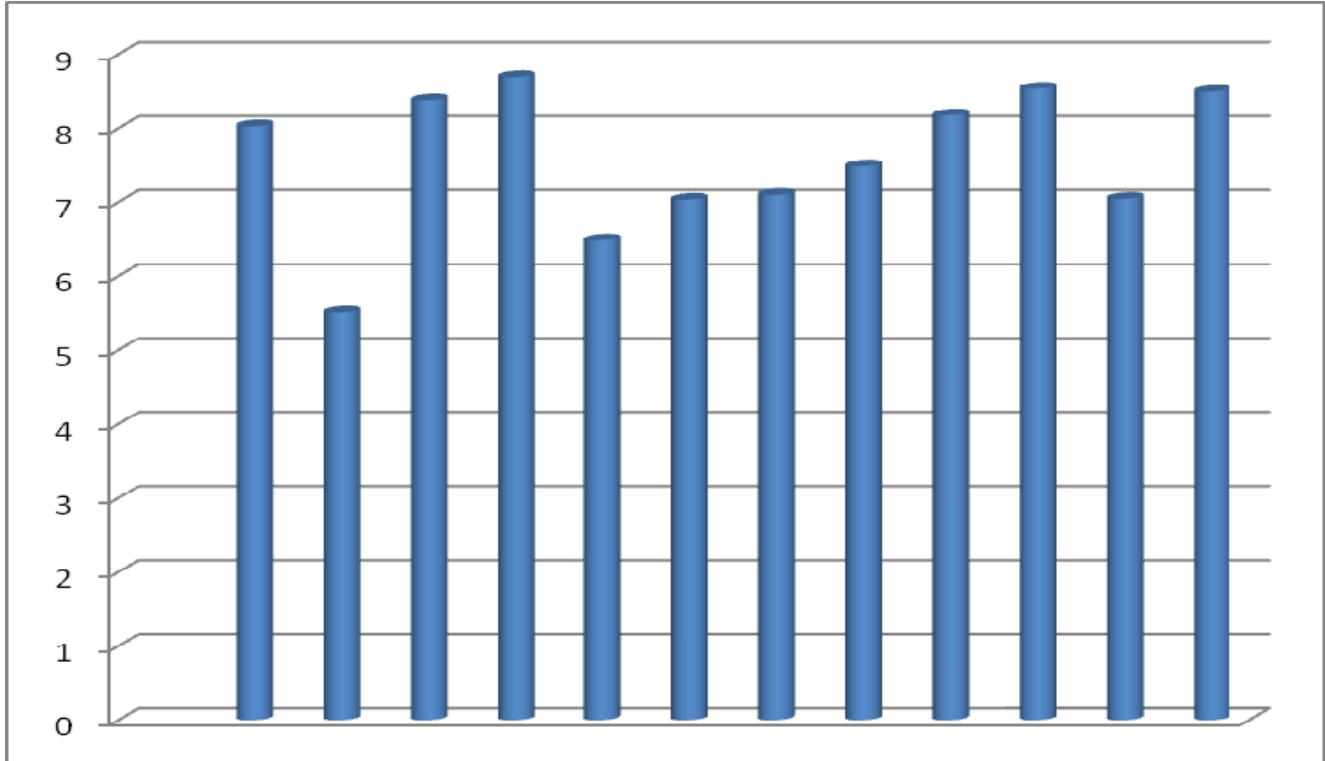
Liberia Financial STATISTICS

**Vol. 15, No.6
Nov. – Dec., 2013**

Research, Policy and Planning Department
Monrovia, Liberia



CENTRAL BANK OF LIBERIA



Liberia Financial STATISTICS

THE LIBERIA FINANCIAL STATISTICS (LFS) is produced by the Bank's Research, Policy and Planning Department. Inquiries concerning this publication should be addressed to:

**The Director
Research, Policy and Planning Department
Central Bank of Liberia
Warren and Carey Streets
P. O. Box 2048
Monrovia, Liberia**

**Telephone #s: 00(231/886-516-006/880-649-103
Fax #s: 00(231) 077059642
Swift: CBLRRLM**

Table of Contents

	INTRODUCTION	-ii-
	Statistics.....	I - 53
Ref. No.	Description of Statistics	Pages
1	MONEY AND BANKING.....	1 – 35
1.1a	Depository Corporations Survey – 2011.....	1 – 2
1.1b	Depository Corporations Survey –2012	3 – 4
1.1c	Depository Corporations Survey –2013	5 – 6
1.2a	Sectoral Balance Sheet of Other Depository Corp. – 2011.....	7 - 8
1.2b	Sectoral Balance Sheet of Other Depository Corp. –2012.....	9 - 10
1.2c	Sectoral Balance Sheet of Other Depository Corp. – 2013.....	11-12
1.3a	Sectoral Balance Sheet of Central Bank of Liberia – 2011.....	13 - 14
1.3b	Sectoral Balance Sheet of Central Bank of Liberia – 2012	15 - 16
1.3c	Sectoral Balance Sheet of Central Bank of Liberia - 2013.....	17 - 18
1.4a	Commercial Banks’ Loans by Economic Sectors – 2011.....	19 - 20
1.4b	Commercial Banks’ Loans by Economic Sectors - 2012	21 - 22
1.4c	Commercial Banks’ Loans by Economic Sectors - 2013.....	23 - 24
1.5	Commercial Banks’ Interest Rate – 2011-2013.....	25
1.6	Liberian Dollar Exchange Rates - Period Averages: 2011 - 2013.....	26
1.7	Liberian Dollar Exchange Rates –End of Period: 2011 - 2013.....	27
1.8	Liberian Dollar Exchange Rates – Sept. – Oct., 2013.....	28
1.9	Commercial Banks’ Inflows and Outflows: 2011 - 2013.....	29
1.10a	Central Bank of Liberia FX Auction – 2011.....	30 - 31
1.10b	Central Bank of Liberia FX Auction – 2012.....	32 – 33
1.10c	Central Bank of Liberia FX Auction – 2013.....	34 - 35
2	REAL SECTOR	36 - 55
2.1a	Harmonized Consumer Price Index – 2011.....	36
2.1b	Harmonized Consumer Price Index – 2012	37
2.1c	Harmonized Consumer Price Index – 2013	38 - 39
2.2a	HCPI Inflation Rates (Year-on-Year) – 2011.....	40
2.2b	HCPI Inflation Rates (Year-on-Year) – 2012	41
2.2c	HCPI Inflation Rates (Year-on-Year) – 2013	42 - 43
2.3a	Key Output Volume – 2011.....	44 - 45
2.3b	Key Output Volume – 2012	46 - 47
2.3c	Key Output Volume – 2012 – 2013.....	48 - 49
2.4a	Key Output Value – 2011.....	50 - 51
2.4b	Key Output Value – 2012	52 - 53
2.4c	Key Output Value - 2013.....	54 - 55
3	GOVERNMENT FINANCE.....	56 - 57
3.1	Government Revenue & Expenditure– 2012 – 2013.....	56
3.2	Summary Estimates of Liberia’s Public Debt Stock and Status as at Apr. 2013.....	57
4	EXTERNAL TRADE.....	58 - 62
4.1	Exports and Imports – 2011-2013.....	58
4.2	Commodity Composition of Exports – 2012 - 2013.....	59
4.3a	Commodity Composition of Imports – 2011- 2013.....	60
4.3b	Commodity Composition of Imports in CIF Values – 2011- 2013.....	61
4.4	Volume of Imports of Petroleum Products – 2011-2013.....	62

Introduction

The Liberia Financial Statistics (LFS) is a bi-monthly data publication of the Central Bank of Liberia (CBL). It is, among many, a major source for statistical information about the Liberian economy. It provides macroeconomic statistics to both the public and private sectors, which include students, researchers, investors, policymakers, etc.

This publication represents the Sixth Edition (November - December) of 2013, and Volume 15, No. 6. The data coverage extends from January, 2011 to December, 2013 and includes statistics from the Four (4) sectors of the Liberian economy; namely, Monetary, Real, Fiscal and External. The graph on the cover and inside pages depicts the rate of inflation (year-on-year) from January, 2013 to December, 2013.

The CBL's Management is exceptionally grateful to all its many data providers for their cooperation which has immensely contributed to the compilation and timely publication of this document. It is the Bank's hope that this excellent relationship will continue to nurture as we strive together in building a strong statistical database for our country.

MONEY AND BANKING

1.1a: Depository Corporations Survey - 2011

Millions of Liberian Dollars

	Jan-11	Feb-11	Mar-11	Apr-11	May-11	Jun-11
Foreign Assets (net)	22,475.0	21,539.7	22,015.0	22,571.8	25,146.2	22,892.3
Foreign Assets (MA)	34,091.0	33,391.4	33,806.4	34,455.9	36,120.2	35,660.7
(-) Foreign Liabilities (MA)	20,253.8	20,321.3	20,404.4	20,986.1	20,735.6	20,800.5
Foreign Assets (CoB)	9,699.2	9,719.0	9,894.2	10,510.7	11,157.5	9,418.0
(-) Foreign Liabilities (CoB)	1,061.4	1,249.4	1,281.2	1,408.6	1,395.9	1,386.0
Domestic Credit	26,660.1	27,936.0	28,137.5	28,892.9	28,086.6	29,516.2
Claims on General Government (net)	11,562.9	12,484.5	12,460.0	12,774.5	11,759.2	13,135.5
Claims on General Government (MA)	18,969.6	18,907.5	18,845.3	18,969.4	18,968.7	19,094.2
(-) General Government Deposits (MA)	7,214.7	6,208.7	6,035.9	5,731.9	6,709.5	5,390.4
Claims on General Government (CoB)	467.6	455.2	453.6	456.8	445.9	448.9
(-) General Government Deposits (CoB)	659.6	669.6	803.0	919.8	945.9	1,017.3
Claims on Public Corporations (MA)	0.0	0.0	0.0	0.0	0.0	0.0
Claims on Public Corporations (CoB)	920.1	845.3	886.3	860.8	853.6	893.0
Claims on Private Sector (MA)	362.5	363.8	353.2	357.0	357.1	359.8
Claims on Private Sector (CoB)	13,744.7	14,189.1	14,365.9	14,808.1	15,007.9	14,990.9
Claims on NBFIs (MA)	0.0	0.0	0.0	0.0	0.0	0.0
Claims on NBFIs (CoB)	69.9	53.2	72.2	92.6	108.9	137.1
Money	31,523.4	31,672.1	32,697.8	33,718.9	35,272.5	35,666.9
Currency Outside Banks (MA)	4,615.5	4,583.4	4,726.9	4,809.2	4,700.5	4,924.6
Liberian Currency in Circulation (MA)	5,496.0	5,528.1	5,605.9	5,653.9	5,626.1	5,647.3
(-) Currency Holdings (CoB)	880.5	944.8	879.0	844.7	925.6	722.7
Demand Deposits	18,844.3	18,491.2	18,789.7	19,503.7	20,993.1	20,725.8
Demand Deposits (MA)	971.0	1,007.0	1,020.8	1,024.3	1,042.7	1,073.5
Demand Deposits (CoB)	17,873.3	17,484.2	17,768.9	18,479.3	19,950.4	19,652.3
Other Deposits	8,063.7	8,597.5	9,181.2	9,406.1	9,579.0	10,016.6
Other Deposits (MA)	122.8	27.7	224.2	172.9	124.1	93.0
Time and Savings Deposits (CoB)	7,940.8	8,569.8	8,957.0	9,233.2	9,454.9	9,923.5
Bonds and Securities (CoB)	0.0	0.0	0.0	0.0	0.0	0.0
Restricted Deposits	53.2	52.8	52.8	52.8	52.8	52.8
Capital Accounts	26,917.3	27,311.4	26,973.2	27,442.0	27,068.3	26,826.0
Capital Accounts (MA)	17,694.6	17,550.5	17,412.5	17,792.4	17,466.9	17,677.0
Capital Accounts (CoB)	9,222.7	9,760.9	9,560.8	9,649.5	9,601.4	9,148.9
Other Items (net)	(9,236.0)	(9,532.9)	(9,347.1)	(9,576.0)	(9,036.7)	(10,044.3)
Unclassified Liabilities (MA)	9,513.1	9,603.2	9,816.8	9,906.2	9,857.5	9,868.4
(-) Unclassified Assets (MA)	15,027.6	15,077.4	15,154.4	15,764.4	15,583.0	15,665.5
(-) Unclassified Assets (CoB)	6,267.0	6,072.1	6,240.9	6,626.9	6,379.0	6,490.4
Unclassified Liabilities (CoB)	4,224.6	3,911.3	4,004.3	4,498.6	4,246.8	4,002.4
Commercial Banks' Deposits (MA)	7,779.8	8,128.2	8,493.5	8,856.0	10,079.8	10,860.5
(-) Reserves (CoB)	9,063.0	9,550.2	9,703.8	10,069.5	10,878.8	11,989.2
Currency Holdings (CoB)	880.5	944.8	879.0	844.7	925.6	722.7
Liabilities to Central Bank (CoB)	108.8	108.4	108.0	108.8	108.8	109.5
(-) Claims on Domestic Banks (MA)	607.7	647.3	867.2	586.0	625.6	643.0
(-) Claims on Central Bank of Liberia (CoB)	894.2	903.4	900.4	906.5	906.5	906.5
(-) Unbalanced Items	116.8	21.6	217.9	163.0	117.9	86.8
Vertical Check	0.0	0.0	0.0	0.0	(0.0)	0.0

NBFI: Non-Bank Financial Institutions

Source: Central Bank of Liberia, Monrovia, Liberia.

MONEY AND BANKING

CENTRAL BANK OF LIBERIA

1.1b: Depository Corporations Survey - 2011- Continued

Millions of Liberian Dollars

	Jul-11	Aug-11	Sep-11	Oct-11	Nov-11	Dec-11
Foreign Assets (net)	24,209.4	24,288.7	24,705.0	23,287.9	22,546.8	26,814.5
Foreign Assets (MA)	35,704.5	36,292.2	35,876.0	35,589.4	35,391.8	37,963.0
(-) Foreign Liabilities (MA)	20,681.6	20,807.8	20,664.1	20,664.3	20,545.7	20,832.7
Foreign Assets (CoB)	10,379.9	10,012.7	10,200.7	9,146.8	8,521.3	10,723.2
(-) Foreign Liabilities (CoB)	1,193.4	1,208.3	707.7	784.0	820.7	1,039.0
Domestic Credit	30,187.4	30,212.8	31,834.9	32,321.2	33,252.2	34,458.6
Claims on General Government (net)	13,936.3	13,204.8	14,412.1	14,153.5	14,964.8	15,283.3
Claims on General Government (MA)	18,969.7	18,969.3	18,845.4	18,852.3	18,727.7	18,976.7
(-) General Government Deposits (MA)	4,526.3	5,371.7	4,134.9	4,278.5	3,299.1	3,100.9
Claims on General Government (CoB)	445.9	445.9	500.3	442.8	439.7	424.2
(-) General Government Deposits (CoB)	953.0	838.6	798.7	863.0	903.6	1,016.7
Claims on Public Corporations (MA)	0.0	0.0	0.0	0.0	0.0	0.0
Claims on Public Corporations (CoB)	780.9	958.3	1,080.2	719.3	692.3	719.2
Claims on Private Sector (MA)	357.7	361.4	360.2	346.4	214.0	421.6
Claims on Private Sector (CoB)	14,977.5	15,542.9	15,880.6	16,985.8	17,289.3	17,934.2
Claims on NBFIs (MA)	0.0	0.0	0.0	0.0	0.0	0.0
Claims on NBFIs (CoB)	135.0	145.4	101.9	116.1	91.8	100.4
Money	36,214.7	36,583.8	40,737.4	41,022.0	41,038.2	44,634.6
Currency Outside Banks (MA)	5,071.8	5,026.5	5,124.3	5,463.4	6,022.4	6,704.3
Liberian Currency in Circulation (MA)	5,660.9	5,696.2	5,710.5	5,958.0	6,534.8	7,251.6
(-) Currency Holdings (CoB)	589.1	669.7	586.2	494.5	512.4	547.3
Demand Deposits	20,967.5	21,765.3	23,527.7	23,938.0	23,341.4	24,601.1
Demand Deposits (MA)	1,062.8	1,112.4	1,088.4	1,178.5	1,215.1	1,236.4
Demand Deposits (CoB)	19,904.6	20,652.8	22,439.3	22,759.5	22,126.3	23,364.7
Other Deposits	10,175.4	9,792.1	12,085.4	11,620.5	11,674.3	13,329.2
Other Deposits (MA)	80.9	(411.9)	1,062.4	136.9	114.9	1,973.4
Time and Savings Deposits (CoB)	10,094.5	10,204.0	11,023.0	11,483.7	11,559.5	11,355.8
Bonds and Securities (CoB)	0.0	0.0	0.0	0.0	0.0	0.0
Restricted Deposits	52.8	51.7	51.7	54.1	54.1	54.1
Capital Accounts	26,790.3	27,447.1	27,252.1	27,191.9	27,110.5	26,913.6
Capital Accounts (MA)	17,546.6	17,489.5	17,260.9	17,170.8	17,102.0	16,732.6
Capital Accounts (CoB)	9,243.7	9,957.6	9,991.1	10,021.1	10,008.4	10,181.0
Other Items (net)	(8,580.1)	(9,993.0)	(10,438.8)	(12,522.1)	(12,288.8)	(8,355.8)
Unclassified Liabilities (MA)	10,782.3	10,851.4	10,789.4	10,820.8	10,572.0	11,453.5
(-) Unclassified Assets (MA)	15,579.3	15,676.5	16,100.9	16,084.2	16,041.8	16,216.7
(-) Unclassified Assets (CoB)	6,400.9	6,843.2	8,890.3	10,885.3	10,999.3	8,824.9
Unclassified Liabilities (CoB)	4,252.0	4,174.6	4,668.9	5,237.1	5,902.5	5,311.0
Commercial Banks' Deposits (MA)	10,904.1	11,071.4	11,149.2	11,304.8	11,654.6	11,914.6
(-) Reserves (CoB)	11,757.4	12,323.2	12,215.7	12,095.9	12,536.2	12,780.4
Currency Holdings (CoB)	589.1	669.7	586.2	494.5	512.4	547.3
Liabilities to Central Bank (CoB)	108.8	108.8	108.0	108.0	107.3	108.8
(-) Claims on Domestic Banks (MA)	647.0	701.9	689.7	653.0	675.4	930.6
(-) Claims on Central Bank of Liberia (CoB)	906.5	906.0	899.8	899.8	893.6	906.0
(-) Unbalanced Items	74.7	(418.0)	1,056.1	130.8	108.6	1,967.6
Vertical Check	(0.0)	(0.0)	0.0	(0.0)	0.0	0.0

NBFIs: Non-Bank Financial Institutions

Source: Central Bank of Liberia, Monrovia, Liberia.

MONEY AND BANKING**1.1c: Depository Corporations Survey - 2012***Millions of Liberian Dollars*

	Jan-12	Feb-12	Mar-12	Apr-12	May-12	Jun-12
Foreign Assets (net)	27,538.9	26,345.9	27,469.0	26,215.5	25,244.0	25,546.0
Foreign Assets (MA)	39,000.0	38,195.1	38,970.8	39,755.2	39,613.2	37,821.8
(-) Foreign Liabilities (MA)	21,103.9	21,104.0	21,247.4	21,261.9	21,822.0	21,391.0
Foreign Assets (CoB)	10,404.8	11,847.6	12,626.2	10,353.5	10,043.3	11,609.9
(-) Foreign Liabilities (CoB)	762.0	2,592.7	2,880.6	2,631.2	2,590.6	2,494.7
Domestic Credit	33,489.3	34,764.6	34,516.3	33,845.5	37,126.0	35,785.9
Claims on General Government (net)	13,683.1	14,489.2	13,830.3	12,915.8	14,947.0	14,376.4
Claims on General Government (MA)	19,225.4	19,226.1	19,350.3	19,350.3	19,848.4	20,964.7
(-) General Government Deposits (MA)	4,933.7	4,098.5	4,816.8	5,736.3	4,116.5	5,679.7
Claims on General Government (CoB)	430.0	416.1	421.8	421.8	421.8	413.5
(-) General Government Deposits (CoB)	1,038.6	1,054.5	1,125.0	1,120.0	1,206.7	1,322.1
Claims on Public Corporations (MA)	0.0	0.0	0.0	0.0	0.0	0.0
Claims on Public Corporations (CoB)	1,053.9	1,187.5	1,279.3	1,264.6	1,354.9	1,457.0
Claims on Private Sector (MA)	426.0	341.5	345.1	347.3	361.2	354.9
Claims on Private Sector (CoB)	18,238.4	18,660.6	18,946.9	19,203.3	20,353.8	19,484.5
Claims on NBFIs (MA)	0.0	0.0	0.0	0.0	0.0	0.0
Claims on NBFIs (CoB)	87.8	85.8	114.7	114.5	108.9	113.0
Money	43,180.9	41,669.9	38,975.8	41,410.4	42,906.4	42,424.3
Currency Outside Banks (MA)	6,157.1	6,091.6	6,094.3	5,908.7	6,021.0	5,778.0
Liberian Currency in Circulation (MA)	7,144.4	7,263.5	7,339.6	7,354.7	7,296.7	7,173.5
(-) Currency Holdings (CoB)	987.3	1,171.8	1,245.3	1,446.0	1,275.7	1,395.5
Demand Deposits	24,427.4	23,431.7	20,827.1	23,393.5	24,566.2	24,451.7
Demand Deposits (MA)	1,253.1	1,319.0	1,351.4	1,366.8	343.9	355.6
Demand Deposits (CoB)	23,174.3	22,112.7	19,475.7	22,026.6	24,222.3	24,096.2
Other Deposits	12,596.5	12,146.6	12,054.4	12,108.2	12,319.1	12,194.6
Other Deposits (MA)	290.1	287.8	312.7	272.2	278.5	308.7
Time and Savings Deposits (CoB)	12,306.4	11,858.8	11,741.7	11,836.0	12,040.7	11,885.9
Bonds and Securities (CoB)	0.0	0.0	0.0	0.0	0.0	0.0
Restricted Deposits	48.1	47.6	47.6	46.8	46.3	45.7
Capital Accounts	27,494.5	27,565.8	27,581.9	27,497.6	28,788.6	27,975.4
Capital Accounts (MA)	16,963.1	16,980.5	17,016.6	16,830.4	17,729.4	16,961.8
Capital Accounts (CoB)	10,531.4	10,585.3	10,565.3	10,667.2	11,059.2	11,013.7
Other Items (net)	(9,405.2)	(7,885.0)	(4,307.3)	(8,621.5)	(9,092.8)	(8,804.9)
Unclassified Liabilities (MA)	11,691.6	11,616.3	11,746.8	11,606.6	12,470.9	12,342.4
(-) Unclassified Assets (MA)	16,406.4	16,567.4	16,621.0	16,628.8	17,044.4	17,239.2
(-) Unclassified Assets (CoB)	9,981.7	8,656.5	8,115.3	8,145.4	7,704.9	10,083.3
Unclassified Liabilities (CoB)	6,994.8	7,199.6	9,612.7	6,084.3	5,491.1	8,222.4
Commercial Banks' Deposits (MA)	12,318.1	12,309.0	12,267.6	12,372.1	13,617.6	13,125.4
(-) Reserves (CoB)	13,831.1	13,768.5	13,110.9	14,075.8	15,920.3	15,185.5
Currency Holdings (CoB)	987.3	1,171.8	1,245.3	1,446.0	1,275.7	1,395.5
Liabilities to Central Bank (CoB)	110.3	109.5	111.0	111.0	220.2	216.5
(-) Claims on Domestic Banks (MA)	652.3	661.3	824.3	732.1	820.8	955.5
(-) Claims on Central Bank of Liberia (CoB)	919.3	919.3	925.5	925.5	950.2	931.7
(-) Unbalanced Items	283.6	281.7	306.3	266.0	272.3	288.2
Vertical Check	(0.0)	0.0	(0.0)	(0.0)	(0.0)	(0.0)

NBFI: Non-Bank Financial Institutions

Source: Central Bank of Liberia, Monrovia, Liberia.

MONEY AND BANKING

CENTRAL BANK OF LIBERIA

1.1c: Depository Corporations Survey - 2012 (contd.)

Millions of Liberian Dollars

	Jul-12	Aug-12	Sep-12	Oct-12	Nov-12	Dec-12
Foreign Assets (net)	23,371.7	23,719.6	24,190.0	23,053.6	22,654.3	25,420.0
Foreign Assets (MA)	36,420.3	34,847.2	35,033.7	34,684.6	34,432.8	36,108.2
(-) Foreign Liabilities (MA)	21,103.9	19,961.0	20,121.3	19,964.1	19,963.6	19,963.6
Foreign Assets (CoB)	10,525.0	11,313.1	11,668.8	11,017.6	10,874.7	11,673.0
(-) Foreign Liabilities (CoB)	2,469.7	2,479.7	2,391.3	2,684.5	2,689.6	2,397.6
Domestic Credit	36,352.0	33,528.9	37,800.6	36,811.5	39,264.9	37,715.5
Claims on General Government (net)	14,990.0	11,842.7	15,296.0	14,981.6	17,242.7	15,528.0
Claims on General Government (MA)	20,695.8	20,696.2	20,561.6	20,427.1	20,427.6	19,749.7
(-) General Government Deposits (MA)	4,818.6	4,462.1	4,237.9	4,347.1	2,352.5	3,422.0
Claims on General Government (CoB)	402.4	402.4	405.2	391.5	380.7	433.5
(-) General Government Deposits (CoB)	1,289.6	4,793.8	1,432.9	1,489.9	1,213.0	1,233.3
Claims on Public Corporations (MA)	0.0	0.0	0.0	0.0	0.0	0.0
Claims on Public Corporations (CoB)	1,484.5	1,503.2	1,538.7	1,572.8	1,565.9	1,614.4
Claims on Private Sector (MA)	96.3	102.6	101.3	115.4	123.1	137.5
Claims on Private Sector (CoB)	19,575.9	19,936.1	20,699.5	19,984.9	20,176.0	20,277.4
Claims on NBFIs (MA)	0.0	0.0	0.0	0.0	0.0	0.0
Claims on NBFIs (CoB)	205.4	144.3	165.1	156.7	157.3	158.2
Money	40,524.5	41,166.0	42,785.7	41,691.2	42,575.7	45,089.1
Currency Outside Banks (MA)	5,493.7	5,302.2	5,364.1	5,633.4	6,422.2	7,291.3
Liberian Currency in Circulation (MA)	7,069.7	6,929.6	6,939.8	7,104.7	7,556.5	8,614.2
(-) Currency Holdings (CoB)	1,576.1	1,627.4	1,575.7	1,471.3	1,134.3	1,322.9
Demand Deposits	23,005.9	22,480.5	23,620.6	22,097.8	22,383.0	23,188.1
Demand Deposits (MA)	219.7	259.5	269.3	284.9	317.8	346.7
Demand Deposits (CoB)	22,786.2	22,221.0	23,351.3	21,812.9	22,065.2	22,841.4
Other Deposits	12,025.0	13,383.3	13,801.0	13,960.0	13,770.5	14,609.7
Other Deposits (MA)	164.5	63.4	154.2	41.9	(48.0)	1,336.5
Time and Savings Deposits (CoB)	11,860.5	13,320.0	13,646.8	13,918.1	13,818.5	13,273.2
Bonds and Securities (CoB)	0.0	0.0	0.0	0.0	0.0	0.0
Restricted Deposits	45.3	44.5	43.7	43.7	43.7	43.7
Capital Accounts	27,361.7	27,169.6	27,385.6	27,350.9	28,101.9	26,726.6
Capital Accounts (MA)	16,478.9	16,390.3	16,269.8	16,251.2	16,208.7	15,618.3
Capital Accounts (CoB)	10,882.8	10,779.3	11,115.8	11,099.7	11,893.2	11,108.3
Other Items (net)	(8,043.2)	(11,068.2)	(8,070.2)	(9,178.8)	(8,850.0)	(7,387.4)
Unclassified Liabilities (MA)	12,177.9	11,650.9	11,747.3	11,521.0	12,463.6	12,379.6
(-) Unclassified Assets (MA)	17,145.1	16,414.1	16,577.8	16,573.7	16,529.9	16,466.4
(-) Unclassified Assets (CoB)	9,738.7	9,335.1	9,395.0	9,409.2	8,173.4	6,887.9
Unclassified Liabilities (CoB)	8,457.6	4,743.7	7,989.3	6,787.5	5,487.2	4,658.4
Commercial Banks' Deposits (MA)	12,971.5	13,053.6	13,224.8	12,978.6	14,111.8	12,761.0
(-) Reserves (CoB)	15,132.4	15,021.9	15,362.3	14,573.7	15,519.0	14,568.2
Currency Holdings (CoB)	1,576.1	1,627.4	1,575.7	1,471.3	1,134.3	1,322.9
Liabilities to Central Bank (CoB)	210.7	212.2	195.4	196.0	562.2	982.4
(-) Claims on Domestic Banks (MA)	649.8	714.1	693.4	696.9	1,416.6	1,947.1
(-) Claims on Central Bank of Liberia (CoB)	919.3	919.3	913.1	907.0	907.0	907.0
(-) Unbalanced Items	148.5	48.4	138.8	27.3	(63.3)	1,284.9
Vertical Check	(0.0)	(0.0)	(0.0)	(0.0)	(0.0)	0.0

NBFIs: Non-Bank Financial Institutions

Source: Central Bank of Liberia, Monrovia, Liberia.

MONEY AND BANKING

CENTRAL BANK OF LIBERIA

1.1c: Depository Corporations Survey -2013

Millions of Liberian Dollars

	Jan-13	Feb-13	Mar-13	Apr-13	May-13	Jun-13
Foreign Assets (net)	25,362.1	25,972.5	23,822.0	26,081.9	26,082.7	24,080.7
Foreign Assets (MA)	37,001.0	35,986.4	34,705.8	37,255.1	36,537.2	35,842.8
(-) Foreign Liabilities (MA)	20,514.6	20,518.5	20,514.4	20,818.3	21,048.4	21,054.1
Foreign Assets (CoB)	11,216.3	12,956.8	11,870.5	11,887.7	12,539.0	11,103.2
(-) Foreign Liabilities (CoB)	2,340.6	2,452.2	2,240.0	2,242.6	1,945.2	1,811.2
Domestic Credit	38,311.1	38,784.5	39,924.8	39,473.3	42,553.3	40,823.9
Claims on General Government (net)	14,752.8	15,463.3	17,168.3	14,662.7	16,483.2	15,143.8
Claims on General Government (MA)	20,269.1	20,261.7	20,195.2	20,399.8	20,453.8	20,313.6
(-) General Government Deposits (MA)	4,635.3	3,854.9	2,121.1	4,792.5	3,171.9	4,448.4
Claims on General Government (CoB)	445.5	431.3	431.3	422.7	485.4	619.8
(-) General Government Deposits (CoB)	1,326.5	1,374.9	1,337.2	1,367.3	1,284.1	1,341.1
Claims on Public Corporations (MA)	0.0	0.0	0.0	0.0	0.0	0.0
Claims on Public Corporations (CoB)	1,694.5	2,125.2	2,199.0	2,269.7	2,433.2	2,288.3
Claims on Private Sector (MA)	137.7	143.2	159.3	169.7	174.1	177.0
Claims on Private Sector (CoB)	21,676.7	20,942.1	20,302.8	22,266.1	23,225.6	23,143.2
Claims on NBFIs (MA)	0.0	0.0	0.0	0.0	0.0	0.0
Claims on NBFIs (CoB)	49.3	110.8	95.5	105.1	237.3	71.5
Money	44,475.9	45,766.3	46,745.2	47,272.7	49,880.7	48,287.7
Currency Outside Banks (MA)	6,482.6	6,490.7	6,672.4	6,495.4	6,474.7	6,474.7
Liberian Currency in Circulation (MA)	8,298.0	8,248.4	8,197.7	8,096.0	8,088.8	8,147.2
(-) Currency Holdings (CoB)	1,815.3	1,757.7	1,525.3	1,659.9	1,593.4	1,672.5
Demand Deposits	24,216.3	24,533.5	25,620.0	25,983.5	28,137.0	26,845.2
Demand Deposits (MA)	381.4	439.3	453.1	507.1	510.5	202.2
Demand Deposits (CoB)	23,834.9	24,094.2	25,166.9	25,476.4	27,626.6	26,643.0
Other Deposits	13,777.0	14,742.1	14,452.8	14,853.1	15,248.2	14,967.8
Other Deposits (MA)	337.4	335.6	358.6	557.6	546.7	65.4
Time and Savings Deposits (CoB)	13,439.6	14,406.5	14,094.2	14,295.5	14,701.5	14,902.4
Bonds and Securities (CoB)	0.0	0.0	0.0	0.0	0.0	0.0
Restricted Deposits	43.7	43.7	43.7	43.7	43.7	43.7
Capital Accounts	27,645.7	27,504.7	27,636.7	28,067.4	28,126.1	28,225.4
Capital Accounts (MA)	16,104.9	15,979.5	15,836.0	16,076.7	15,997.2	16,101.7
Capital Accounts (CoB)	11,540.8	11,525.2	11,800.7	11,990.7	12,128.9	12,123.8
Other Items (net)	(8,154.7)	(8,222.1)	(10,320.1)	(9,270.9)	(8,867.7)	(11,586.8)
Unclassified Liabilities (MA)	12,862.1	12,811.0	12,810.5	12,829.6	13,110.9	13,176.0
(-) Unclassified Assets (MA)	16,871.8	16,873.2	17,190.1	17,411.9	17,627.4	17,887.4
(-) Unclassified Assets (CoB)	7,696.8	8,133.0	9,329.4	8,659.5	8,693.6	10,530.4
Unclassified Liabilities (CoB)	5,353.4	5,962.0	5,079.4	5,060.7	5,656.1	5,491.5
Commercial Banks' Deposits (MA)	13,552.7	13,434.9	14,297.5	13,950.6	14,733.1	13,551.9
(-) Reserves (CoB)	15,377.1	15,121.8	15,995.9	15,816.7	16,489.9	15,789.7
Currency Holdings (CoB)	1,815.3	1,757.7	1,525.3	1,659.9	1,593.4	1,672.5
Liabilities to Central Bank (CoB)	1,227.1	912.7	1,412.8	1,913.7	1,693.1	2,164.8
(-) Claims on Domestic Banks (MA)	2,374.2	2,331.4	2,312.7	2,366.4	2,387.5	2,535.1
(-) Claims on Central Bank of Liberia (CoB)	931.7	931.7	931.7	944.0	956.4	956.4
(-) Unbalanced Items	286.2	290.6	314.1	513.2	500.5	55.7
Vertical Check	0.0	(0.0)	0.0	(0.0)	(0.0)	0.0

Source : Central Bank of Liberia, Monrovia, Liberia.

MONEY AND BANKING

CENTRAL BANK OF LIBERIA

1.1c: Depository Corporations Survey -2013 (continue)

Millions of Liberian Dollars

	Jul-13	Aug-13	Sep-13	Oct-13	Nov-13	Dec-13
Foreign Assets (net)	22,554.4	23,119.1	20,476.2	21,824.4	24,247.1	28,359.4
Foreign Assets (MA)	34,819.1	36,091.2	36,699.6	36,998.8	36,926.8	40,709.5
(-) Foreign Liabilities (MA)	21,328.2	21,875.9	22,014.2	22,287.0	22,424.0	22,699.2
Foreign Assets (CoB)	10,878.7	10,878.7	7,796.4	9,332.0	12,526.0	12,104.6
(-) Foreign Liabilities (CoB)	1,815.2	1,974.9	2,005.6	2,219.3	2,781.7	1,755.4
Domestic Credit	44,812.1	44,444.5	46,277.0	47,809.7	48,754.4	48,833.8
Claims on General Government (net)	17,041.4	16,659.1	16,750.0	16,775.8	17,322.9	17,308.6
Claims on General Government (MA)	20,822.5	21,336.1	21,464.5	21,721.3	21,849.7	21,776.5
(-) General Government Deposits (MA)	3,332.4	4,351.9	5,104.4	5,226.5	5,030.3	5,497.1
Claims on General Government (CoB)	821.6	821.6	1,570.6	1,479.7	1,780.4	1,800.2
(-) General Government Deposits (CoB)	1,270.4	1,146.8	1,180.7	1,198.7	1,276.9	771.0
Claims on Public Corporations (MA)	0.0	0.0	0.0	0.0	0.0	0.0
Claims on Public Corporations (CoB)	2,472.5	2,472.5	2,794.3	2,907.9	2,983.6	1,862.6
Claims on Private Sector (MA)	151.2	165.9	169.4	175.5	175.9	174.9
Claims on Private Sector (CoB)	25,054.2	25,054.2	26,461.5	27,840.0	28,159.1	29,373.1
Claims on NBFIs (MA)	0.0	0.0	0.0	0.0	0.0	0.0
Claims on NBFIs (CoB)	92.9	92.9	101.8	110.4	112.9	114.6
Money	49,605.4	50,286.7	49,540.1	49,472.2	52,967.1	55,123.7
Currency Outside Banks (MA)	6,411.5	6,692.1	6,558.9	6,773.4	7,172.3	8,271.7
Liberian Currency in Circulation (MA)	8,244.0	8,524.6	8,513.8	8,562.2	8,600.6	9,468.0
(-) Currency Holdings (CoB)	1,832.5	1,832.5	1,954.9	1,788.8	1,428.3	1,196.2
Demand Deposits	28,037.8	28,510.0	27,344.6	27,221.8	29,588.2	30,562.0
Demand Deposits (MA)	210.1	233.1	255.1	282.6	159.3	167.2
Demand Deposits (CoB)	27,827.6	28,276.9	27,089.5	26,939.2	29,428.9	30,394.8
Other Deposits	15,156.1	15,084.6	15,636.6	15,477.0	16,206.6	16,289.9
Other Deposits (MA)	149.8	49.3	53.6	65.8	65.2	37.6
Time and Savings Deposits (CoB)	15,006.3	15,035.2	15,583.1	15,411.2	16,141.5	16,252.3
Bonds and Securities (CoB)	0.0	0.0	0.0	0.0	0.0	0.0
Restricted Deposits	43.7	43.7	43.7	43.7	43.7	43.7
Capital Accounts	28,813.2	29,253.7	29,381.0	29,439.0	29,806.0	29,752.4
Capital Accounts (MA)	16,494.1	16,897.1	16,981.9	17,199.4	17,259.2	17,186.9
Capital Accounts (CoB)	12,319.1	12,356.6	12,399.1	12,239.6	12,546.9	12,565.5
Other Items (net)	(10,946.0)	(11,971.1)	(12,158.0)	(9,255.0)	(9,750.1)	(7,688.9)
Unclassified Liabilities (MA)	13,361.1	14,684.8	14,788.5	15,122.6	15,167.6	16,298.0
(-) Unclassified Assets (MA)	18,331.2	18,727.3	18,823.7	19,039.9	19,173.9	19,388.1
(-) Unclassified Assets (CoB)	8,845.6	8,845.6	9,295.6	9,192.5	8,968.3	8,941.7
Unclassified Liabilities (CoB)	4,331.2	2,959.5	2,378.0	4,797.6	4,078.6	5,611.7
Commercial Banks' Deposits (MA)	14,038.5	12,954.2	12,698.3	12,467.1	12,729.6	13,007.1
(-) Reserves (CoB)	15,646.0	15,646.0	14,435.1	14,341.4	13,696.6	15,075.7
Currency Holdings (CoB)	1,832.5	1,832.5	1,954.9	1,788.8	1,428.3	1,196.2
Liabilities to Central Bank (CoB)	2,173.1	2,993.0	2,750.8	3,329.8	2,904.1	2,853.3
(-) Claims on Domestic Banks (MA)	3,044.2	3,260.9	3,262.8	3,288.5	3,320.1	2,320.8
(-) Claims on Central Bank of Liberia (CoB)	956.4	956.4	956.4	956.4	956.4	956.4
(-) Unbalanced Items	141.0	41.0	44.9	57.7	57.0	27.5
Vertical Check	0.0	0.0	0.0	(0.0)	(0.0)	(0.0)

NBFIs: Non-Bank Financial Institutions

Source: Central Bank of Liberia, Monrovia, Liberia.

MONEY AND BANKING

CENTRAL BANK OF LIBERIA

1.2b: Sectoral Balance Sheet of Other Depository Corporations - 2011

Thousands of Liberian Dollars

	Jan-11	Feb-11	Mar-11	Apr-11	May-11	Jun-11
Assets						
Reserves	9,062,971	9,550,168	9,703,791	10,069,503	10,878,778	11,989,158
<i>of which: Cash on Hand: Coins/LD Notes</i>	880,544	944,753	878,989	844,650	925,569	722,668
Foreign Assets	9,699,204	9,719,014	9,894,163	10,510,723	11,157,492	9,418,032
Claims on General Government	467,629	455,179	453,604	456,754	445,868	448,943
Claims on Public Corporations	920,094	845,350	886,256	860,792	853,552	892,970
Claims on Private Sector	13,744,667	14,189,133	14,365,887	14,808,125	15,007,944	14,990,876
Claims on Central Bank of Liberia	894,181	903,444	900,355	906,533	906,533	906,533
Claims on NBFIs	69,930	53,184	72,219	92,601	108,889	137,074
Unclassified Assets	6,266,966	6,072,065	6,240,852	6,626,870	6,379,001	6,490,429
Total Assets	41,125,641	41,787,536	42,517,127	44,331,901	45,738,058	45,274,015
	Jan-11	Feb-11	Mar-11	Apr-11	May-11	Jun-11
Liabilities						
Demand Deposits	17,873,259	17,484,231	17,768,882	18,479,321	19,950,355.38	19,652,319.21
Time and Savings Deposits	7,940,847	8,569,758	8,956,965	9,233,199	9,454,912.80	9,923,518.95
Restricted Deposits	34,412	34,412	34,011	34,011	34,011	34,011
Bonds and Securities	0	0	0	0	0	0
Foreign Liabilities	1,061,444	1,249,368	1,281,198	1,408,623	1,395,941	1,386,014
Government Deposits	659,629	669,578	803,022	919,812	945,934	1,017,293
Liabilities to Central Bank of Liberia	108,750	108,375	108,000	108,750	108,750	109,500
Capital Accounts	9,222,734	9,760,904	9,560,758	9,649,546	9,601,369	9,148,945
Unclassified Liabilities	4,224,566	3,911,311	4,004,290	4,498,639	4,246,785	4,002,413
Total Liabilities	41,125,641	41,787,536	42,517,127	44,331,901	45,738,058	45,274,015
Vertical Check (Assets/Liabilities)	0	0	0	0	0	0

NBFIs: Non-Bank Financial Institutions

Source : Central Bank of Liberia, Monrovia, Liberia.

MONEY AND BANKING

CENTRAL BANK OF LIBERIA

1.2b: Sectoral Balance Sheet of Other Depository Corporations - 2011

Thousands of Liberian Dollars

	Jul-11	Aug-11	Sep-11	Oct-11	Nov-11	Dec-11
Assets						
Reserves	11,757,383	12,323,153	12,215,703	12,095,888	12,536,166	12,780,443
<i>of which: Cash on Hand: Coins/LD Notes</i>	589,080	669,717	586,191	494,536	512,400	547,305
Foreign Assets	10,379,895	10,012,656	10,200,699	9,146,767	8,521,327	10,723,187
Claims on General Government	445,868	445,868	500,348	442,818	439,743	424,154
Claims on Public Corporations	780,927	958,317	1,080,184	719,280	692,313	719,226
Claims on Private Sector	14,977,487	15,542,879	15,880,600	16,985,835	17,289,277	17,934,205
Claims on Central Bank of Liberia	906,533	905,956	899,777	899,777	893,598	905,956
Claims on NBFIs	134,987	145,432	101,875	116,122	91,821	100,355
Unclassified Assets	6,400,898	6,843,227	8,890,325	10,885,251	10,999,307	8,824,880
Total Assets	45,783,979	47,177,489	49,769,512	51,291,738	51,463,552	52,412,405
	Jul-11	Aug-11	Sep-11	Oct-11	Nov-11	Dec-11
Liabilities						
Demand Deposits	19,904,640.35	20,652,821.98	22,439,299.53	22,759,475.57	22,126,282	23,364,708
Time and Savings Deposits	10,094,496.04	10,203,973.70	11,022,975.98	11,483,680.58	11,559,461	11,355,848
Restricted Deposits	34,011	32,900	32,900	35,330	35,330	35,330
Bonds and Securities	0	0	0	0	0	0
Foreign Liabilities	1,193,357	1,208,337	707,665	784,004	820,686	1,039,036
Government Deposits	953,032	838,572	798,687	863,046	903,591	1,016,679
Liabilities to Central Bank of Liberia	108,750	108,750	108,000	108,000	107,250	108,750
Capital Accounts	9,243,710	9,957,570	9,991,132	10,021,097	10,008,405	10,181,041
Unclassified Liabilities	4,251,983	4,174,563	4,668,853	5,237,104	5,902,547	5,311,013
Total Liabilities	45,783,979	47,177,489	49,769,512	51,291,738	51,463,552	52,412,405
Vertical Check (Assets/Liabilities)	0	0	0	0	0	0

NBFIs: Non-Bank Financial Institutions

Source : Central Bank of Liberia, Monrovia, Liberia.

MONEY AND BANKING

CENTRAL BANK OF LIBERIA

1.2c: Sectoral Balance Sheet of Other Depository Corporations - 2012

Thousands of Liberian Dollars

	Jan-12	Feb-12	Mar-12	Apr-12	May-12	Jun-12
Assets						
Reserves	13,831,055	13,768,512	13,110,949	14,075,764	15,920,324	15,185,457
<i>of which: Cash on Hand: Coins/LD Notes</i>	987,278	1,171,834	1,245,335	1,445,990	1,275,685	1,395,454
Foreign Assets	10,404,765	11,847,634	12,626,193	10,353,460	10,043,327	11,609,922
Claims on General Government	430,004	416,127	421,824	421,824	421,825	413,501
Claims on Public Corporations	1,053,907	1,187,481	1,279,289	1,264,635	1,354,950	1,456,990
Claims on Private Sector	18,238,439	18,660,574	18,946,865	19,203,253	20,353,837	19,484,480
Claims on Central Bank of Liberia	919,321	919,321	925,500	925,500	950,214	931,678
Claims on NBFIs	87,825	85,813	114,747	114,525	108,947	113,028
Unclassified Assets	9,981,734	8,656,472	8,115,333	8,145,362	7,704,897	10,083,288
Total Assets	54,947,049	55,541,933	55,540,699	54,504,320	56,858,321	59,278,344
	Jan-12	Feb-12	Mar-12	Apr-12	May-12	Jun-12
Liabilities						
Demand Deposits	23,174,293	22,112,732	19,475,654	22,026,608	24,222,299	24,096,153
Time and Savings Deposits	12,306,365	11,858,751	11,741,653	11,835,954	12,040,651	11,885,860
Restricted Deposits	29,290	28,847	28,817	28,028	27,564	26,906
Bonds and Securities	0	0	0	0	0	0
Foreign Liabilities	761,966	2,592,737	2,880,560	2,631,190	2,590,570	2,494,737
Government Deposits	1,038,625	1,054,502	1,124,998	1,120,003	1,206,730	1,322,119
Liabilities to Central Bank of Liberia	110,250	109,500	111,000	111,000	220,154	216,512
Capital Accounts	10,531,420	10,585,266	10,565,305	10,667,231	11,059,206	11,013,681
Unclassified Liabilities	6,994,839	7,199,598	9,612,712	6,084,307	5,491,148	8,222,377
Total Liabilities	54,947,049	55,541,933	55,540,699	54,504,320	56,858,321	59,278,344
Vertical Check (Assets/Liabilities)	0	0	0	0	0	0

NBFIs: Non-Bank Financial Institutions

Source: Central Bank of Liberia, Monrovia, Liberia.

MONEY AND BANKING

CENTRAL BANK OF LIBERIA

1.2c: Sectoral Balance Sheet of Other Depository Corporations - 2012 (contd.)

Thousands of Liberian Dollars

	Jul-12	Aug-12	Sep-12	Oct-12	Nov-12	Dec-12
Assets						
Reserves	15,185,017	15,021,916	15,362,288	14,573,670	15,130,820	14,568,153
<i>of which: Cash on Hand: Coins/LD Notes</i>	1,395,454	1,627,401	1,575,709	1,471,275	1,576,057	1,322,873
Foreign Assets	11,609,922	11,313,088	11,668,822	11,017,551	10,525,035	11,672,979
Claims on General Government	413,501	402,401	405,177	391,528	402,400	433,549
Claims on Public Corporations	1,456,990	1,503,178	1,538,676	1,572,843	1,484,517	1,614,450
Claims on Private Sector	19,484,480	19,936,134	20,699,472	19,984,863	19,575,871	20,277,420
Claims on Central Bank of Liberia	919,321	919,321	913,142	906,964	906,964	906,964
Claims on NBFIs	113,028	144,348	165,095	156,719	205,387	158,161
Unclassified Assets	10,083,288	9,335,069	9,395,002	9,409,243	9,738,715	6,887,880
Total Assets	59,265,547	58,575,455	60,147,674	58,013,381	57,969,708	56,519,555
	Jul-12	Aug-12	Sep-12	Oct-12	Nov-12	Dec-12
Liabilities						
Demand Deposits	24,096,153	22,221,006	23,351,284	21,812,911	22,786,193	22,841,372
Time and Savings Deposits	11,885,860	13,319,971	13,646,814	13,918,081	11,860,501	13,273,224
Restricted Deposits	26,494	25,695	24,896	24,896	24,896	24,896
Bonds and Securities	0	0	0	0	0	0
Foreign Liabilities	2,494,737	2,479,710	2,391,301	2,684,487	2,469,716	2,397,612
Government Deposits	1,322,119	4,793,803	1,432,867	1,489,873	1,289,620	1,233,316
Liabilities to Central Bank of Liberia	216,512	212,230	195,442	196,004	210,743	982,422
Capital Accounts	11,001,296	10,779,301	11,115,771	11,099,672	10,870,428	11,108,330
Unclassified Liabilities	8,222,377	4,743,740	7,989,299	6,787,455	8,457,612	4,658,383
Total Liabilities	59,265,547	58,575,455	60,147,674	58,013,381	57,969,708	56,519,555
Vertical Check (Assets/Liabilities)	0	0	0	0	0	0

NBFIs: Non-Bank Financial Institutions

Source : Central Bank of Liberia, Monrovia, Liberia.

MONEY AND BANKING

CENTRAL BANK OF LIBERIA

1.2c: Sectoral Balance Sheet of Other Depository Corporations - 2013

Thousands of Liberian Dollars

	Jan-13	Feb-13	Mar-13	Apr-13	May-13	Jun-13
Assets						
Reserves	15,377,126	15,121,804	15,995,900	15,816,743	16,489,883	15,789,743
<i>of which: Cash on Hand: Coins/LD Notes</i>	1,815,339	1,757,652	1,525,267	1,659,921	1,593,369	1,672,474
Foreign Assets	11,216,279	12,956,757	11,870,534	11,887,715	12,539,038	11,103,211
Claims on General Government	445,507	431,313	431,312	422,720	485,401	619,754
Claims on Public Corporations	1,694,500	2,125,180	2,198,984	2,269,671	2,433,175	2,288,324
Claims on Private Sector	21,676,739	20,942,096	20,302,813	22,266,146	23,225,587	23,143,238
Claims on Central Bank of Liberia	931,678	931,678	931,678	944,035	956,393	956,393
Claims on NBFIs	49,260	110,823	95,454	105,135	237,301	71,544
Unclassified Assets	7,696,752	8,133,022	9,329,387	8,659,547	8,693,566	10,530,376
Total Assets	59,087,842	60,752,672	61,156,063	62,371,713	65,060,344	64,502,581
	Jan-13	Feb-13	Mar-13	Apr-13	May-13	Jun-13
Liabilities						
Demand Deposits	23,834,929	24,094,236	25,166,896	25,476,365	27,626,582	26,643,021
Time and Savings Deposits	13,439,611	14,406,542	14,094,179	14,295,515	14,701,511	14,902,384
Restricted Deposits	24,896	24,896	24,896	24,896	24,896	24,896
Bonds and Securities	0	0	0	0	0	0
Foreign Liabilities	2,340,600	2,452,179	2,239,982	2,242,604	1,945,172	1,811,200
Government Deposits	1,326,536	1,374,924	1,337,161	1,367,299	1,284,111	1,341,090
Liabilities to Central Bank of Liberia	1,227,074	912,731	1,412,807	1,913,706	1,693,077	2,164,769
Capital Accounts	11,540,798	11,525,174	11,800,705	11,990,661	12,128,890	12,123,754
Unclassified Liabilities	5,353,397	5,961,989	5,079,436	5,060,667	5,656,105	5,491,468
Total Liabilities	59,087,842	60,752,672	61,156,063	62,371,713	65,060,344	64,502,581
Vertical Check (Assets/Liabilities)	0	0	0	0	0	0

NBFIs: Non-Bank Financial Institutions

Source: Central Bank of Liberia, Monrovia, Liberia.

MONEY AND BANKING

CENTRAL BANK OF LIBERIA

CENTRAL BANK OF LIBERIA

1.2c: Sectoral Balance Sheet of Other Depository Corporations - 2013 (continue)*Thousands of Liberian Dollars*

	Jul-13	Aug-13	Sep-13	Oct-13	Nov-13	Dec-13
Assets						
Reserves	15,645,952	15,645,952	14,435,066	14,341,388	13,696,644	15,075,748
<i>of which: Cash on Hand: Coins/LD Notes</i>	1,832,496	1,832,496	1,954,931	1,788,805	1,428,325	1,196,247
Foreign Assets	10,878,707	10,878,707	7,796,449	9,332,032	12,526,038	12,104,593
Claims on General Government	821,644	821,644	1,570,614	1,479,721	1,780,421	1,800,161
Claims on Public Corporations	2,472,451	2,472,451	2,794,285	2,907,889	2,983,587	1,862,638
Claims on Private Sector	25,054,167	25,054,167	26,461,470	27,839,995	28,159,092	29,373,112
Claims on Central Bank of Liberia	956,393	956,393	956,393	956,393	956,393	956,393
Claims on NBFIs	92,876	92,876	101,808	110,435	112,891	114,589
Unclassified Assets	8,845,578	8,845,578	9,295,565	9,192,508	8,968,259	8,941,691
Total Assets	64,767,768	64,767,768	63,411,650	66,160,360	69,183,323	70,228,924
	Jul-13	Aug-13	Sep-13	Oct-13	Nov-13	Dec-13
Liabilities						
Demand Deposits	27,827,645	28,276,862	27,089,482	26,939,211	29,428,862	30,394,810
Time and Savings Deposits	15,006,343	15,035,243	15,583,067	15,411,205	16,141,466	16,252,347
Restricted Deposits	24,896	24,896	24,896	24,896	24,896	24,896
Bonds and Securities	0	0	0	0	0	0
Foreign Liabilities	1,815,156	1,974,890	2,005,618	2,219,323	2,781,662	1,755,440
Government Deposits	1,270,372	1,146,752	1,180,748	1,198,662	1,276,888	770,984
Liabilities to Central Bank of Liberia	2,173,066	2,993,005	2,750,795	3,329,847	2,904,051	2,853,287
Capital Accounts	12,319,099	12,356,583	12,399,062	12,239,604	12,546,893	12,565,490
Unclassified Liabilities	4,331,190	2,959,537	2,377,981	4,797,611	4,078,605	5,611,670
Total Liabilities	64,767,768	64,767,768	63,411,650	66,160,360	69,183,323	70,228,924
Vertical Check (Assets/Liabilities)	0	0	0	0	0	0

*NBFIs: Non-Bank Financial Institutions**Source: Central Bank of Liberia, Monrovia, Liberia.*

MONEY AND BANKING

CENTRAL BANK OF LIBERIA

1.3b: Sectoral Balance Sheet of Central Bank of Liberia - 2011

Thousands of Liberian Dollars

	Jan-11	Feb-11	Mar-11	Apr-11	May-11	Jun-11
Assets						
Foreign Assets	34,090,999	33,391,377	33,806,417	34,455,851	36,120,242	35,660,715
Claims on General Government	18,969,588	18,907,536	18,845,285	18,969,384	18,968,683	19,094,182
Claims on Public Corporations	0	0	0	0	0	0
Claims on Private Sector	362,532	363,837	353,185	356,980	357,078	359,815
Claims on Domestic Banks	607,717	647,325	867,250	585,994	625,617	642,989
Claims on NBFIs	0	0	0	0	0	0
Unclassified Assets	15,027,582	15,077,369	15,154,384	15,764,387	15,583,000	15,665,474
Total Assets	69,058,418	68,387,444	69,026,521	70,132,597	71,654,620	71,423,175
	Jan-11	Feb-11	Mar-11	Apr-11	May-11	Jun-11
Liabilities						
Reserve Money	14,363,567	14,684,978	15,338,149	15,697,202	16,866,437	17,668,127
Other Deposits	0	0	0	0	0	0
Restricted Reserves	18,781	18,781	18,781	18,781	18,781	18,781
Foreign Liabilities	20,253,764	20,321,309	20,404,416	20,986,103	20,735,580	20,800,472
Liabilities to General Government	7,214,669	6,208,661	6,035,886	5,731,876	6,709,456	5,390,367
Capital Accounts	17,694,579	17,550,510	17,412,480	17,792,423	17,466,900	17,677,027
Unclassified Liabilities	9,513,058	9,603,204	9,816,809	9,906,212	9,857,466	9,868,401
Total Liabilities	69,058,418	68,387,444	69,026,521	70,132,597	71,654,620	71,423,175
Vertical Check (Assets/Liabilities)	0	0	0	0	0	0

NBFIs: Non-Bank Financial Institutions

Source : Central Bank of Liberia, Monrovia, Liberia.

MONEY AND BANKING

CENTRAL BANK OF LIBERIA

1.3b: Sectoral Balance Sheet of Central Bank of Liberia - 2011- Continued

Thousands of Liberian Dollars

	Jul-11	Aug-11	Sep-11	Oct-11	Nov-11	Dec-11
Assets						
Foreign Assets	35,704,476	36,292,165	35,876,040	35,589,415	35,391,833	37,963,032
Claims on General Government	18,969,705	18,969,271	18,845,357	18,852,285	18,727,666	18,976,710
Claims on Public Corporations	0	0	0	0	0	0
Claims on Private Sector	357,683	361,357	360,206	346,400	214,033	421,552
Claims on Domestic Banks	646,978	701,859	689,713	653,013	675,362	930,600
Claims on NBFIs	0	0	0	0	0	0
Unclassified Assets	15,579,258	15,676,525	16,100,947	16,084,177	16,041,755	16,216,701
Total Assets	71,258,100	72,001,178	71,872,264	71,525,290	71,050,647	74,508,595
	Jul-11	Aug-11	Sep-11	Oct-11	Nov-11	Dec-11
Liabilities						
Reserve Money	17,702,527	17,461,963	19,004,123	18,572,058	19,513,076	22,370,194
Other Deposits	0	0	0	0	0	0
Restricted Reserves	18,781	18,781	18,781	18,781	18,781	18,781
Foreign Liabilities	20,681,580	20,807,811	20,664,063	20,664,283	20,545,670	20,832,726
Liabilities to General Government	4,526,263	5,371,718	4,134,950	4,278,534	3,299,061	3,100,881
Capital Accounts	17,546,639	17,489,523	17,260,920	17,170,808	17,102,049	16,732,551
Unclassified Liabilities	10,782,309	10,851,383	10,789,427	10,820,826	10,572,010	11,453,462
Total Liabilities	71,258,100	72,001,178	71,872,264	71,525,290	71,050,647	74,508,595
Vertical Check (Assets/Liabilities)	0	0	0	0	0	0

NBFIs: Non-Bank Financial Institutions

Source : Central Bank of Liberia, Monrovia, Liberia.

MONEY AND BANKING

CENTRAL BANK OF LIBERIA

1.3c: Sectoral Balance Sheet of Central Bank of Liberia -2012

Thousands of Liberian Dollars

	Jan-12	Feb-12	Mar-12	Apr-12	May-12	Jun-12
Assets						
Foreign Assets	38,999,997	38,195,091	38,970,809	39,755,203	39,613,226	37,821,837
Claims on General Government	19,225,445	19,226,073	19,350,280	19,350,329	19,848,388	20,964,717
Claims on Public Corporations	0	0	0	0	0	0
Claims on Private Sector	426,010	341,510	345,106	347,260	361,194	354,938
Claims on Domestic Banks	652,344	661,263	824,255	732,115	820,777	955,528
Claims on NBFIs	0	0	0	0	0	0
Unclassified Assets	16,406,446	16,567,422	16,620,978	16,628,780	17,044,412	17,239,208
Total Assets	75,710,242	74,991,360	76,111,428	76,813,687	77,687,997	77,336,229
	Jan-12	Feb-12	Mar-12	Apr-12	May-12	Jun-12
Liabilities						
Reserve Money	20,999,141	21,173,157	21,264,951	21,359,720	21,530,525	20,942,566
Other Deposits	0	0	0	0	0	0
Restricted Reserves	18,781	18,781	18,781	18,781	18,781	18,781
Foreign Liabilities	21,103,925	21,104,047	21,247,448	21,261,937	21,821,960	21,391,007
Liabilities to General Government	4,933,712	4,098,504	4,816,803	5,736,334	4,116,452	5,679,670
Capital Accounts	16,963,083	16,980,537	17,016,628	16,830,355	17,729,389	16,961,766
Unclassified Liabilities	11,691,600	11,616,333	11,746,817	11,606,561	12,470,890	12,342,439
Total Liabilities	75,710,242	74,991,360	76,111,428	76,813,687	77,687,997	77,336,229
Vertical Check (Assets/Liabilities)	0	0	0	0	0	0

NBFIs: Non-Bank Financial Institutions

Source : Central Bank of Liberia, Monrovia, Liberia.

MONEY AND BANKING

CENTRAL BANK OF LIBERIA

1.3c: Sectoral Balance Sheet of Central Bank of Liberia -2012 (contd.)

Thousands of Liberian Dollars

	Jul-12	Aug-12	Sep-12	Oct-12	Nov-12	Dec-12
Assets						
Foreign Assets	36,420,307	34,847,168	35,033,705	34,684,618	34,432,770	36,108,175
Claims on General Government	20,695,832	20,696,228	20,561,629	20,427,102	20,427,552	19,749,739
Claims on Public Corporations	0	0	0	0	0	0
Claims on Private Sector	96,271	102,553	101,325	115,387	123,054	137,521
Claims on Domestic Banks	649,849	714,114	693,364	696,886	1,416,609	1,947,132
Claims on NBFIs	0	0	0	0	0	0
Unclassified Assets	17,145,150	16,414,117	16,577,768	16,573,745	16,529,871	16,466,442
Total Assets	75,007,409	72,774,180	72,967,791	72,497,738	72,929,857	74,409,009
	Jul-12	Aug-12	Sep-12	Oct-12	Nov-12	Dec-12
Liabilities						
Reserve Money	20,409,330	20,291,131	20,572,698	20,395,531	21,922,732	23,006,769
Other Deposits	0	0	0	0	0	0
Restricted Reserves	18,781	18,781	18,781	18,781	18,781	18,781
Foreign Liabilities	21,103,883	19,960,970	20,121,252	19,964,080	19,963,576	19,963,576
Liabilities to General Government	4,818,629	4,462,094	4,237,947	4,347,109	2,352,494	3,421,994
Capital Accounts	16,478,874	16,390,288	16,269,793	16,251,226	16,208,659	15,618,253
Unclassified Liabilities	12,177,912	11,650,916	11,747,321	11,521,010	12,463,615	12,379,636
Total Liabilities	75,007,409	72,774,180	72,967,791	72,497,738	72,929,857	74,409,009
Vertical Check (Assets/Liabilities)	0	0	0	0	0	0

NBFIs: Non-Bank Financial Institutions

Source: Central Bank of Liberia, Monrovia, Liberia.

MONEY AND BANKING

CENTRAL BANK OF LIBERIA

1.3c: Sectoral Balance Sheet of Central Bank of Liberia - 2013

Thousands of Liberian Dollars

	Jan-13	Feb-13	Mar-13	Apr-13	May-13	Jun-13
Assets						
Foreign Assets	37,001,039	35,986,385	34,705,817	37,255,050	36,537,229	35,842,775
Claims on General Government	20,269,134	20,261,743	20,195,247	20,399,752	20,453,784	20,313,574
Claims on Public Corporations	0	0	0	0	0	0
Claims on Private Sector	137,722	143,161	159,281	169,721	174,061	177,024
Claims on Domestic Banks	2,374,155	2,331,420	2,312,673	2,366,429	2,387,481	2,535,104
Claims on NBFIs	0	0	0	0	0	0
Unclassified Assets	16,871,809	16,873,161	17,190,052	17,411,864	17,627,449	17,887,370
Total Assets	76,653,858	75,595,870	74,563,071	77,602,814	77,180,005	76,755,848
	Jan-13	Feb-13	Mar-13	Apr-13	May-13	Jun-13
Liabilities						
Reserve Money	22,518,201.72	22,413,209.42	23,262,309.31	23,066,952.62	23,832,824.22	21,956,906.70
Other Deposits	0	0	0	0	0	0
Restricted Reserves	18,781.00	18,781.00	18,781.00	18,781.00	18,781.00	18,781.00
Foreign Liabilities	20,514,583.88	20,518,459.95	20,514,369.38	20,818,290.87	21,048,373.91	21,054,077.22
Liabilities to General Government	4,635,255.51	3,854,854.26	2,121,131.48	4,792,498.35	3,171,859.54	4,448,427.95
Capital Accounts	16,104,924.25	15,979,543.51	15,836,029.20	16,076,717.69	15,997,219.66	16,101,695.45
Unclassified Liabilities	12,862,111.77	12,811,021.98	12,810,450.20	12,829,573.88	13,110,946.25	13,175,960.00
Total Liabilities	76,653,858	75,595,870	74,563,071	77,602,814	77,180,005	76,755,848
Vertical Check (Assets/Liabilities)	0	0	0	0	0	0

NBFIs: Non-Bank Financial Institutions

Source : Central Bank of Liberia, Monrovia, Liberia.

MONEY AND BANKING

CENTRAL BANK OF LIBERIA

1.3c: Sectoral Balance Sheet of Central Bank of Liberia - 2013 (continue)

Thousands of Liberian Dollars

	Jul-13	Aug-13	Sep-13	Oct-13	Nov-13	Dec-13
Assets						
Foreign Assets	34,819,052	36,091,161	36,699,588	36,998,756	36,926,775	40,709,461
Claims on General Government	20,822,543	21,336,110	21,464,502	21,721,286	21,849,678	21,776,461
Claims on Public Corporations	0	0	0	0	0	0
Claims on Private Sector	151,215	165,878	169,425	175,522	175,940	174,901
Claims on Domestic Banks	3,044,237	3,260,937	3,262,769	3,288,488	3,320,101	2,320,841
Claims on NBFIs	0	0	0	0	0	0
Unclassified Assets	18,331,192	18,727,268	18,823,739	19,039,861	19,173,866	19,388,053
Total Assets	77,168,239	79,581,354	80,420,023	81,223,912	81,446,360	84,369,717
	Jul-13	Aug-13	Sep-13	Oct-13	Nov-13	Dec-13
Liabilities						
Reserve Money	22,633,635.34	21,752,900.68	21,512,215.53	21,369,599.71	21,546,537.54	22,669,772.85
Other Deposits	0	0	0	0	0	0
Restricted Reserves	18,781.00	18,781.00	18,781.00	18,781.00	18,781.00	18,781.00
Foreign Liabilities	21,328,244.51	21,875,868.38	22,014,214.33	22,287,048.73	22,424,023.52	22,699,224.74
Liabilities to General Government	3,332,413.17	4,351,884.83	5,104,361.97	5,226,499.11	5,030,309.22	5,497,055.31
Capital Accounts	16,494,062.63	16,897,104.11	16,981,920.60	17,199,412.17	17,259,155.37	17,186,865.38
Unclassified Liabilities	13,361,102.05	14,684,815.28	14,788,529.66	15,122,571.43	15,167,553.09	16,298,017.27
Total Liabilities	77,168,239	79,581,354	80,420,023	81,223,912	81,446,360	84,369,717
Vertical Check (Assets/Liabilities)	0	0	0	0	0	0

NBFIs: Non-Bank Financial Institutions

Source : Central Bank of Liberia, Monrovia, Liberia.

MONEY AND BANKING

CENTRAL BANK OF LIBERIA

1.4b: Commercial Banks' Loans By Economic Sector - 2011
 Thousands of Liberian Dollars

Sector	Jan-11		Feb-11		Mar-11		Apr-11		May-11		Jun-11	
	L\$	%	L\$	%	L\$	%	L\$	%	L\$	%	L\$	%
1. Agriculture	463,032	3.5	515,489	3.8	547,500	4.0	464,411	3.3	488,592.0	3.4	517,277.0	3.6
1.1 Rubber	123,505	0.9	128,202	0.9	146,961	1.1	118,473	0.8	126,425.0	0.9	98,113.0	0.7
1.2 Forestry	102,476	0.8	116,021	0.9	151,503	1.1	131,393	0.9	127,195.0	0.9	164,424.0	1.1
1.3 Fishery	136,228	1.0	165,525	1.2	128,592	0.9	126,658	0.9	151,742.5	1.1	167,462.0	1.2
1.4 Others	100,824	0.8	105,741	0.8	120,444	0.9	87,889	0.6	83,229.5	0.6	87,278.0	0.6
2. Mining & Quarrying	2,766	0.0	12,944	0.1	53,003	0.4	55,395	0.4	56,265.0	0.4	49,061.0	0.3
2.1 Iron Ore	-	-	-	-	-	-	-	-	-	-	1,173.0	0.0
2.2 Quarrying	2,766	0.0	12,944	0.1	53,003	0.4	55,395	0.4	56,265.0	0.4	47,888.0	0.3
3. Manufacturing	762,040	5.8	186,317	1.4	202,008	1.5	351,600	2.5	352,759.5	2.5	305,190.0	2.1
4. Construction	1,391,797	10.6	1,423,017	10.5	1,540,369	11.2	1,471,530	10.5	1,518,132.0	10.7	1,585,257.0	11.1
4.1 Mortgage Loans	178,278	1.4	202,300	1.5	213,624	1.6	215,108	1.5	214,310.0	1.5	141,985.0	1.0
4.2 Home Improvement	429,328	3.3	421,288	3.1	424,128	3.1	499,503	3.6	497,110.0	3.5	349,723.0	2.4
4.3 Others	784,192	5.9	799,429	5.9	902,617	6.6	756,920	5.4	806,712.0	5.7	1,093,549.0	7.6
5. Trans., Storage & Comm.	3,009,794	22.8	1,960,634	14.5	1,957,403	14.2	1,435,831	10.2	1,396,654.0	9.8	1,457,491.0	10.2
5.1 Transportation	2,157,175	16.4	1,088,765	8.0	1,091,462	7.9	712,772	5.1	715,282.5	5.0	703,656.0	4.9
5.2 Storage	0.0	0.0	0.0	0.0	0.0	0.0	0.0	0.0	-	-	-	-
5.3 Communication	852,619	6.5	871,869	6.4	865,941	6.3	723,059	5.2	681,371.5	4.8	753,835.0	5.3
6. Trade, Hotel & Rest.	4,079,018	30.9	5,196,721	38.3	5,198,610	37.8	5,733,106	40.9	5,880,258.0	41.3	5,679,708.0	39.6
6.1 Diamond trade	14,718	0.1	14,739	0.1	24,552	0.2	19,793	0.1	19,502.5	0.1	20,732.0	0.1
6.2 Other trade	3,747,631	28.4	4,863,513	35.9	4,838,041	35.2	5,301,089	37.8	5,461,219.0	38.4	5,263,696.0	36.7
6.3 Hotels	298,650	2.3	299,498	2.2	315,958	2.3	391,595	2.8	378,617.0	2.7	374,950.0	2.6
6.4 Restaurants	18,020	0.1	18,971	0.1	20,059	0.1	20,630	0.1	20,919.5	0.1	20,330.0	0.1
7. Others	3,479,460	26.4	4,269,326	31.5	4,258,280	31.0	4,513,330	32.2	4,542,854.7	31.9	4,741,943.6	33.1
7.1 Services	1,252,654	9.5	1,020,960	7.5	1,483,391	10.8	1,053,793	7.5	1,038,859.0	7.3	1,066,688.0	7.4
7.2 Personal	1,939,409	14.7	3,012,698	22.2	2,586,914	18.8	3,036,923	21.7	3,087,295.0	21.7	3,254,737.0	22.7
7.3 GOL	92,016	0.7	67,924	0.5	67,693	0.5	68,161	0.5	68,150.0	0.5	68,912.0	0.5
7.4 Central Bank of Liberia	0	0.0	-	0.0	0	0.0	-	0.0	-	-	-	-
7.5 Public Corporations	-	0.0	-	0.0	-	0.0	171,028	1.2	170,955.0	1.2	179,288.0	1.3
7.6 Others	195,381	1.5	167,744	1.2	120,282	0.9	183,426	1.3	177,595.7	1.2	172,318.6	1.2
TOTAL	13,187,905.05	100	13,564,446.09	100	13,757,173.28	100	14,025,201.40	100	14,235,515	100	14,335,928	100.0

Source : Central Bank of Liberia, Monrovia, Liberia.

MONEY AND BANKING

CENTRAL BANK OF LIBERIA

1.4b: Commercial Banks' Loans By Economic Sector - 2011- Continued*Thousands of Liberian Dollars*

Sector	Jul-11		Aug-11		Sep-11		Oct-11		Nov-11		Dec-11	
	L\$	%	L\$	%	L\$	%	L\$	%	L\$	%	L\$	%
1. Agriculture	527,459.0	3.7	523,661.5	3.6	514,759	3.4	497,098	3.3	488,026	3.2	748,330	4.6
1.1 Rubber	96,905.0	0.7	135,535.0	0.9	97,401	0.7	99,273	0.7	95,023	0.6	132,458	0.8
1.2 Forestry	202,305.0	1.4	134,735.0	0.9	141,152	0.9	166,747	1.1	128,168	0.8	125,826	0.8
1.3 Fishery	152,250.0	1.1	126,802.5	0.9	200,736	1.3	66,456	0.4	112,756	0.7	192,425	1.2
1.4 Others	75,999.0	0.5	126,589.0	0.9	75,470	0.5	164,622	1.1	152,080	1.0	297,622	1.8
2. Mining & Quarrying	54,960.0	0.4	36,037.5	0.2	66,965	0.4	127,445	0.8	144,006	0.9	139,568	0.9
2.1 Iron Ore	5.00	0.00	-	-	-	-	-	-	8,795	0.1	8,990.00	0.10
2.2 Quarrying	54,955.0	0.4	36,037.5	0.2	66,965	0.4	127,445	0.8	135,212	0.9	130,578	0.8
3. Manufacturing	303,389.5	2.1	310,010.0	2.1	259,416	1.7	271,008	1.8	339,911	2.2	324,053	2.0
4. Construction	1,585,843.0	11.2	1,304,518.0	8.8	1,312,594	8.8	1,361,221	8.9	1,365,694	8.9	1,319,039	8.2
4.1 Mortgage Loans	142,100.0	1.0	103,240.0	0.7	96,408	0.6	92,304	0.6	92,521	0.6	98,238	0.6
4.2 Home Improvement	345,440.0	2.4	124,822.5	0.8	99,576	0.7	90,811	0.6	82,144	0.5	81,466	0.5
4.3 Others	1,098,303.0	7.8	1,076,455.5	7.3	1,116,610	7.5	1,178,106	7.7	1,191,029	7.8	1,139,335	7.0
5. Trans., Storage & Comm.	1,769,227.5	12.5	1,359,086.5	9.2	1,322,107	8.8	1,304,508	8.6	1,326,120	8.6	1,351,589	8.4
5.1 Transportation	1,022,968.5	7.2	666,562.5	4.5	654,054	4.4	629,183	4.1	652,034	4.2	676,770	4.2
5.2 Storage	-	-	-	-	-	-	-	-	-	-	-	0.0
5.3 Communication	746,259.0	5.3	692,524.0	4.7	668,053	4.5	675,325	4.4	674,086	4.4	674,819	4.2
6. Trade, Hotel & Rest.	5,104,382.0	36.1	5,651,218.5	38.3	5,918,395	39.6	6,231,715	40.9	6,304,642	41.1	6,662,164	41.2
6.1 Diamond trade	20,952.5	0.1	21,170.0	0.1	22,176	0.1	21,240	0.1	20,664	0.1	3,536,392	21.9
6.2 Other trade	4,687,663.0	33.1	5,281,419.0	35.8	5,559,882	37.2	5,899,914	38.7	5,983,390	39.0	2,802,802	17.3
6.3 Hotels	374,702.0	2.6	327,120.0	2.2	314,928	2.1	289,368	1.9	279,967	1.8	289,238	1.8
6.4 Restaurants	21,064.5	0.1	21,509.5	0.1	21,409	0.1	21,193	0.1	20,623	0.1	33,732	0.2
7. Others	4,808,624.6	34.0	5,560,386.0	37.7	5,554,867	37.2	5,454,419.52	35.8	5,386,001	35.1	5,625,575	34.8
7.1 Services	2,269,755.0	16.0	2,520,389.1	17.1	2,507,723	16.8	2,587,916	17.0	2,510,567	16.4	2,609,549	16
7.2 Personal	2,112,392.5	14.9	2,225,892.5	15.1	2,326,209	15.6	2,277,777	14.9	2,312,271	15.1	2,414,699	14.9
7.3 GOL	68,440.0	0.5	58,580.0	0.4	57,528	0.4	57,528	0.4	57,129	0.4	57,928	0.4
7.4 Central Bank of Liberia	0	0	0	0	0	0	0	0.0	0	0	0	0.0
7.5 Public Corporations	178,060.0	1.3	347,884.0	2.4	346,634	2.3	337,098	2.2	297,083	1.9	322,988	2.0
7.6 Others	179,977.0	1.3	407,640.4	2.8	316,773	2.1	194,101	1.3	208,953	1.4	220,412	1.4
TOTAL	14,153,886	100	14,744,918	100.0	14,949,103	100	15,247,415	100	15,354,399	100	16,170,317	100.0

Source : Central Bank of Liberia, Monrovia, Liberia.

MONEY AND BANKING

CENTRAL BANK OF LIBERIA

1.4c: Commercial Banks' Loans By Economic Sector - 2012

Thousands of Liberian Dollars

Sector	Jan-12		Feb-12		Mar-12		Apr-12		May-12		Jun-12	
	L\$	%	L\$	%	L\$	%	L\$	%	L\$	%	L\$	%
1. Agriculture	703,084	4.4	744,728	4.4	643,111	3.7	766,591	4.4	701,274	3.8	654,066	3.7
1.1 Rubber	134,712	0.8	195,706	1.2	132,439	0.8	139,756	0.8	178,109	1.0	125,122	0.7
1.2 Forestry	130,206	0.8	170,546	1.0	157,637	0.9	149,184	0.9	153,748	0.8	143,264	0.8
1.3 Fishery	155,600	1.0	114,503	0.7	153,990	0.9	154,586	0.9	147,440	0.8	167,700	0.9
1.4 Others	282,567	1.8	263,973	1.6	199,045	1.1	323,065	1.9	221,977	1.2	217,981	1.2
2. Mining & Quarrying	143,036	0.9	152,575	0.9	231,625	1.3	124,399	0.7	104,125	0.6	118,833	0.7
2.1 Iron Ore	9,188	0.1	9,271.00	0.06	86,358	0.5	3,922.00	0.0	3,876	0.0	3,800	0.0
2.2 Quarrying	133,849	0.8	143,304	0.9	145,267	0.8	120,477	0.7	100,249	0.5	115,033	0.6
3. Manufacturing	334,137	2.1	344,215	2.0	346,370	2.0	342,302	2.0	458,790	2.5	418,079	2.3
4. Construction	1,309,317	8.2	1,354,973	8.1	1,319,674	7.6	1,204,641	6.9	1,251,743	6.8	1,484,294	8.3
4.1 Mortgage Loans	90,332	0.6	135,780	0.8	129,574	0.7	129,056	0.7	34,276	0.2	218,434	1.2
4.2 Home Improvement	67,410	0.4	61,489	0.4	60,499	0.3	35,816	0.2	120,992	0.7	15,943	0.1
4.3 Others	1,151,576	7.2	1,157,704	6.9	1,129,601	6.5	1,039,769	6.0	1,096,475	6.0	1,249,917	7.0
5. Trans., Storage & Comm.	1,189,061	7.5	1,666,421	9.9	1,747,678	10.0	1,402,254	8.0	1,500,856	8.2	1,347,240	7.5
5.1 Transportation	515,689	3.2	1,141,727	6.8	1,094,819	6.3	786,890	4.5	827,081	4.5	784,198	4.4
5.2 Storage	-	-	-	0.0	-	-	37.00	0.0	-	-	-	-
5.3 Communication	673,372	4.2	524,694	3.1	652,859	3.7	615,327	3.5	673,775	3.7	563,042	3.2
6. Trade, Hotel & Rest.	6,859,903	43.0	7,236,069	43.0	7,452,817	42.7	7,626,558	43.7	7,634,932	41.6	7,691,398	43.1
6.1 Diamond trade	21,683	0.1	22,630	0.1	24,198	0.1	24,938	0.1	3,930,016	21.4	24,734	0.1
6.2 Other trade	6,609,033	41.4	6,926,278	41.2	6,728,004	38.5	7,297,544	41.8	3,405,874	18.6	7,379,021	41.3
6.3 Hotels	205,739	1.3	252,056	1.5	663,116	3.8	267,505	1.5	262,185	1.4	252,916	1.4
6.4 Restaurants	23,449	0.1	35,105	0.2	37,499	0.2	36,571	0.2	36,857	0.2	34,728	0.2
7. Others	5,407,123	33.9	5,315,753	31.6	5,726,158	32.8	5,974,479	34.3	6,690,912	36.5	6,143,449	34.4
7.1 Services	2,454,404	15.4	2,188,195	13	2,250,095	12.9	2,612,394	15	2,301,607	12.5	1,793,111	10.0
7.2 Personal	2,326,243	14.6	2,473,726	14.7	2,612,638	15.0	2,550,893	14.6	2,592,275	14.1	2,614,985	14.6
7.3 GOL	55,206	0.3	55,197	0.3	55,881	0.3	56,179	0.3	57,395	0.3	64,832	0.4
7.4 Central Bank of Liberia	0	0	0	0.0	0	0	0	0.0	-	-	-	-
7.5 Public Corporations	370,955	2.3	373,122	2.2	414,765	2.4	413,828	2.4	275,424	1.5	298,178	1.7
7.6 Others	200,317	1.3	225,513	1.3	392,779	2.2	341,185	2.0	1,464,211	8.0	1,372,344	7.7
TOTAL	15,945,661	100	16,814,734	100	17,467,432	100	17,441,223	100	18,342,632	100	17,857,358	100

Source : Central Bank of Liberia, Monrovia, Liberia.

MONEY AND BANKING

CENTRAL BANK OF LIBERIA

1.4c: Commercial Banks' Loans By Economic Sector - 2012 (contd.)*Thousands of Liberian Dollars*

Sector	Jul-12		Aug-12		Sep-12		Oct-12		Nov-12		Dec-12	
	L\$	%	L\$	%	L\$	%	L\$	%	L\$	%	L\$	%
1. Agriculture	516,583	2.9	582,405	3.3	681,743	3.7	804,912	4.3	830,431	4.3	848,755	4.5
1.1 Rubber	144,265	0.8	95,232	0.5	131,994	0.7	207,758	1.1	233,495	1.2	126,440	0.7
1.2 Forestry	87,653	0.5	140,238	0.8	186,661	1.0	202,638	1.1	232,476	1.2	233,813	1.2
1.3 Fishery	61,263	0.3	136,343	0.8	84,899	0.5	70,760	0.4	49,880	0.3	156,673	0.8
1.4 Others	223,403	1.3	210,592	1.2	278,189	1.5	323,757	1.7	314,580	1.6	331,830	1.8
2. Mining & Quarrying	108,393	0.6	114,298	0.7	109,651	0.6	97,880	0.5	1,044,368	5.4	114,928	0.6
2.1 Iron Ore	145	0.0	3,896	0.0	3,796	0.0	3,843	-	45,313	0.2	3,915	0.0
2.2 Quarrying	108,248	0.6	110,402	0.6	105,855	0.6	94,038	0.5	999,055	5.2	111,013	0.6
3. Manufacturing	392,370	2.2	325,393	1.9	340,837	1.8	341,561	1.8	166,548	0.9	279,216	1.5
4. Construction	1,212,817	6.9	1,479,242	8.5	1,577,276	8.5	1,471,220	7.8	1,341,291	7.0	1,300,479	6.9
4.1 Mortgage Loans	162,183	0.9	192,203	1.1	187,172	1.0	131,963	0.7	142,970	0.7	132,095	0.7
4.2 Home Improvement	6,960	0.0	11,319	0.1	14,746	0.1	15,080	0.1	15,298	0.1	24,288	0.1
4.3 Others	1,043,675	6.0	1,275,720	7.3	1,375,358	7.5	1,324,177	7.0	1,183,024	6.2	1,144,096	6.1
5. Trans., Storage & Comm.	1,321,736	7.5	1,426,725	8.2	1,280,063	6.9	1,331,190	7.1	1,340,466	7.0	1,337,288	7.1
5.1 Transportation	694,479	4.0	804,642	4.6	710,825	3.9	768,705	4.1	774,576	4.0	822,656	4.4
5.2 Storage	0	0.0	-	-	0	0.0	-	-	0	0.0	-	-
5.3 Communication	627,257	3.6	622,083	3.6	569,238	3.1	562,485	3.0	565,890	2.9	514,632	2.7
6. Trade, Hotel & Rest.	5,476,084	31.3	6,860,175	39.4	7,367,493	39.9	8,057,194	42.7	8,148,479	42.4	8,325,702	44.0
6.1 Diamond trade	23,418	0.1	24,255	0.1	25,477	0.1	24,723	0.1	24,723	0.1	40,600	0.2
6.2 Other trade	5,308,000	30.3	6,608,301	37.9	7,052,632	38.2	7,775,663	41.2	7,849,681	40.8	8,026,887	42.5
6.3 Hotels	121,365	0.7	211,357	1.2	262,934	1.4	231,550	1.2	248,673	1.3	231,682	1.2
6.4 Restaurants	23,301	0.1	16,263	0.1	26,450	0.1	25,259	0.1	25,404	0.1	26,534	0.1
7. Others	8,494,833	48.5	6,629,852	38.1	7,095,397	38.5	6,756,437	35.8	6,355,254	33.1	6,695,167	35.4
7.1 Services	2,709,597	15.5	1,833,875	10.5	2,056,939	11.1	1,926,950	10.2	1,938,530	10.1	1,842,263	9.7
7.2 Personal	2,862,531	16.3	2,891,751	16.6	2,927,356	15.9	2,797,386	14.8	2,436,300	12.7	2,839,408	15.0
7.3 GOL	54,921	0.3	60,291	0.3	98,793	0.5	64,769	0.3	106,021	0.6	84,275	0.4
7.4 Central Bank of Liberia	-	-	-	-	-	-	-	-	-	-	-	-
7.5 Public Corporations	359,738	2.1	290,138	1.7	289,991	1.6	322,813	1.7	269,137	1.4	310,156	1.6
7.6 Others	2,508,047	14.3	1,553,797	8.9	1,722,318	9.3	1,644,520	8.7	1,605,266	8.3	1,619,066	8.6
TOTAL	17,522,814	100.0	17,418,089	100.0	18,452,460	100.0	18,860,394	100.0	19,226,836	100.0	18,901,533	100.0

Source : Central Bank of Liberia, Monrovia, Liberia.

MONEY AND BANKING

CENTRAL BANK OF LIBERIA

1.4c: Commercial Banks' Loans By Economic Sector - 2013

Thousands of Liberian Dollars

Sector	Jan-13		Feb-13		Mar-13		Apr-13		May-13		Jun-13		
	%	L\$	%	L\$	%	L\$	%	L\$	%	L\$	%	L\$	
1. Agriculture	4.5	1,170,893	5.8	1,184,696	5.8	1,279,792	6.4	1,265,159	5.7	1,201,318	5.4	1,009,887	4.4
1.1 Rubber	0.7	306,093	1.5	121,631	0.6	211,329	1.1	258,848	1.2	318,926	1.4	204,851	0.9
1.2 Forestry	1.2	202,113	1.0	346,092	1.7	349,287	1.7	283,827	1.3	205,263	0.9	163,043	0.7
1.3 Fishery	0.8	193,626	1.0	171,350	0.8	171,127	0.9	162,401	0.7	85,910	0.4	227,324	1.0
1.4 Others	1.8	469,062	2.3	545,623	2.7	548,050	2.7	560,084	2.5	591,220	2.6	414,669	1.8
2. Mining & Quarrying	0.6	154,194	0.8	127,772	0.6	151,978	0.8	127,904	0.6	162,606	0.7	170,225	0.7
2.1 Iron Ore	0.0	43,285	0.2	43,760	0.2	43,359	0.2	44,017	0.2	47,736	0.2	44,776	0.2
2.2 Quarrying	0.6	110,909	0.6	84,012	0.4	108,619	0.5	83,888	0.4	114,870	0.5	125,449	0.6
3. Manufacturing	1.5	321,188	1.6	351,431	1.7	419,155	2.1	421,970	1.9	406,215	1.8	372,394	1.6
4. Construction	6.9	1,649,210	8.2	1,807,881	8.8	1,859,562	9.3	2,692,567	12.2	2,373,115	10.6	2,209,557	9.7
4.1 Mortgage Loans	0.7	32,816	0.2	157,467	0.8	152,129	0.8	187,014	0.8	94,784	0.4	82,434	0.4
4.2 Home Improvement	0.1	133,281	0.7	4,843	0.0	68,913	0.3	12,609	0.1	190,562	0.9	11,175	0.0
4.3 Others	6.1	1,483,114	7.4	1,645,572	8.0	1,638,521	8.2	2,492,945	11.3	2,087,770	9.3	2,115,948	9.3
5. Trans., Storage & Comm.	7.1	1,334,353	6.7	1,489,084	7.3	1,714,391	8.5	1,965,857	8.9	1,745,687	7.8	1,330,534	5.8
5.1 Transportation	4.4	848,669	4.2	856,940	4.2	1,204,255	6.0	1,003,731	4.5	866,412	3.9	667,479	2.9
5.2 Storage	-	-	-	197,359	1.0	-	-	38	0.0	-	-	-	-
5.3 Communication	2.7	485,685	2.4	434,786	2.1	510,136	2.5	962,089	4.4	879,275	3.9	663,055	2.9
6. Trade, Hotel & Rest.	44.0	8,664,542	43.3	8,733,869	42.6	8,385,823	41.7	8,349,400	37.8	8,813,790	39.4	9,827,970	43.2
6.1 Diamond trade	0.2	40,603	0.2	47,905	0.2	47,382	0.2	45,300	0.2	52,250	0.2	60,390	0.3
6.2 Other trade	42.5	8,356,274	41.7	8,387,723	40.9	8,093,156	40.3	8,018,998	36.3	8,474,757	37.9	9,413,701	41.4
6.3 Hotels	1.2	236,209	1.2	265,903	1.3	212,873	1.1	193,297	0.9	216,108	1.0	278,411	1.2
6.4 Restaurants	0.1	31,457	0.2	32,338	0.2	32,413	0.2	91,805	0.4	70,675	0.3	75,468	0.3
7. Others	35.4	6,727,040	33.6	6,797,496	33.2	6,291,743	31.3	7,280,859	32.9	7,681,280	34.3	7,831,420	34.4
7.1 Services	9.7	2,241,520	11.2	1,904,575	9.3	1,776,205	8.8	1,960,127	8.9	1,975,281	8.8	2,218,617	9.8
7.2 Personal	15.0	2,039,423	10.2	2,643,798	12.9	2,759,427	13.7	2,718,102	12.3	2,904,466	13.0	2,728,103	12.0
7.3 GOL	0.4	77,737	0.4	71,406	0.3	85,788	0.4	119,632	0.5	100,564	0.4	81,484	0.4
7.4 Central Bank of Liberia	-	-	-	-	-	-	-	-	-	-	-	-	-
7.5 Public Corporations	1.6	365,381	1.8	389,551	1.9	363,210	1.8	403,287	1.8	378,824	1.7	390,910	1.7
7.6 Others	8.6	2,002,980	10.0	1,788,166	8.7	1,307,114	6.5	2,079,711	9.4	2,322,146	10.4	2,412,307	10.6
TOTAL	100.0	20,021,419	100.0	20,492,228	100.0	20,102,444	100.0	22,103,714	100.0	22,384,009	100.0	22,751,987	100.0

Source: Central Bank of Liberia, Monrovia, Liberia.

MONEY AND BANKING

CENTRAL BANK OF LIBERIA

1.4c: Commercial Banks' Loans By Economic Sector - 2013

Thousands of Liberian Dollars

Sector	%	Jul-13		Aug-13		Sep-13		Oct-13		Nov-13		Dec-13	
		L\$	%	L\$	%	L\$	%	L\$	%	L\$	%	L\$	%
1. Agriculture	4.5	1,358,995	5.5	1,300,242	5.1	1,336,994	5.2	1,353,390	5.2	1,434,521	5.3	1,494,838	5.5
1.1 Rubber	0.7	268,996	1.1	155,105	0.6	230,383	0.9	231,702	0.9	229,919	0.9	232,380	0.9
1.2 Forestry	1.2	204,062	0.8	374,096	1.5	267,120	1.0	291,519	1.1	259,578	1.0	276,716	1.0
1.3 Fishery	0.8	230,098	0.9	161,544	0.6	124,458	0.5	135,861	0.5	181,664	0.7	247,335	0.9
1.4 Others	1.8	655,839	2.7	609,497	2.4	715,033	2.8	694,308	2.7	763,361	2.8	738,407	2.7
2. Mining & Quarrying	0.6	265,361	1.1	89,200	0.4	84,960	0.3	78,327	0.3	95,192	0.4	100,320	0.4
2.1 Iron Ore	0.0	45,338	0.2	50,006	0.2	5,360	0.0	5,103	0.0	4,401	0.0	3,713	0.0
2.2 Quarrying	0.6	220,023	0.9	39,194	0.2	79,600	0.3	73,224	0.3	90,791	0.3	96,608	0.4
3. Manufacturing	1.5	269,041	1.1	331,811	1.3	378,990	1.5	341,464	1.3	376,693	1.4	371,910	1.4
4. Construction	6.9	2,626,535	10.6	2,753,911	10.8	2,774,726	10.9	2,798,056	10.7	2,978,896	11.1	2,933,642	10.8
4.1 Mortgage Loans	0.7	82,848	0.3	85,542	0.3	89,520	0.4	102,060	0.4	115,160	0.4	102,383	0.4
4.2 Home Improvement	0.1	10,618	-	19,398	0.1	28,160	0.1	33,696	0.1	59,251	0.2	35,145	0.1
4.3 Others	6.1	2,533,069	10.3	2,648,971	10.4	2,657,046	10.4	2,662,300	10.2	2,804,486	10.4	2,796,114	10.3
5. Trans., Storage & Comm.	7.1	831,262	5.9	2,356,735	9.2	2,322,487	9.1	2,206,625	8.4	2,180,725	8.1	2,274,077	8.4
5.1 Transportation	4.4	763,165	3.1	593,048	2.3	736,670	2.9	665,499	2.5	671,779	2.5	680,956	2.5
5.2 Storage	-	-	-	-	-	-	-	-	-	-	-	-	-
5.3 Communication	2.7	68,097	2.8	1,763,687	6.9	1,585,817	6.2	1,541,126	5.9	1,508,946	5.6	1,593,121	5.9
6. Trade, Hotel & Rest.	44.0	9,811,638	39.6	9,715,245	38.0	9,799,259	38.3	10,012,921	38.2	10,184,350	37.8	10,860,881	40.0
6.1 Diamond trade	0.2	57,273	0.2	62,487	0.2	60,800	0.2	62,451	0.2	63,652	0.2	62,865	0.2
6.2 Other trade	42.5	9,345,497	37.8	9,240,676	36.2	9,348,245	36.6	9,618,803	36.7	9,825,103	36.5	10,503,245	38.7
6.3 Hotels	1.2	329,430	1.3	314,615	1.2	298,614	1.2	221,345	0.8	207,006	0.8	211,942	0.8
6.4 Restaurants	0.1	79,438	0.3	97,467	0.4	91,600	0.4	110,322	0.4	88,591	0.3	82,830	0.3
7. Others	35.4	8,930,869	36.2	8,979,479	35.2	8,865,244	34.7	9,405,443	35.9	9,689,331	36.0	9,133,698	33.6
7.1 Services	9.7	2,560,933	10.4	2,414,775	9.5	2,495,097	9.8	2,450,112	9.4	2,574,177	9.6	2,580,061	9.5
7.2 Personal	15.0	3,044,329	12.3	3,137,480	12.3	2,996,819	11.7	3,272,460	12.5	3,268,779	12.1	3,256,564	12.0
7.3 GOL	0.4	392,663	1.6	343,200	1.3	347,768	1.4	548,101	2.1	551,899	2.0	578,387	2.1
7.4 Central Bank of Liberia	-	-	-	42,692	0.2	-	-	-	-	-	-	-	-
7.5 Public Corporations	1.6	412,390	1.7	409,695	1.6	272,591	1.1	260,112	1.0	247,919	0.9	265,485	1.0
7.6 Others	8.6	2,520,554	10.2	2,631,637	10.3	2,752,969	10.8	2,874,658	11.0	3,046,558	11.3	2,453,201	9.0
TOTAL	100.0	24,711,696	100.0	25,526,623	100.0	25,562,660	100.0	26,196,228	100.0	26,939,708	100.0	27,169,365	100.0

Source : Central Bank of Liberia, Monrovia, Liberia.

MONEY AND BANKING

1.5: Commercial Banks' Interest Rates: 2011-2013

CENTRAL BANK OF LIBERIA

	Jan-11	Feb-11	Mar-11	Apr-11	May-11	Jun-11
Average Lending Rate	14.62	13.52	13.39	13.50	13.53	13.64
Average Personal Loan Rate	15.38	15.38	15.17	14.60	10.10	14.68
Average Mortgage Rate	14.00	12.47	12.47	14.66	14.63	15.00
Average Time Deposit Rate	2.90	3.30	2.60	2.50	2.90	2.90
Average Savings Rate	2.01	2.02	2.02	2.01	2.08	2.01
Average Rate on CDs	3.00	3.00	3.00	2.00	3.00	2.50

	Jul-11	Aug-11	Sep-11	Oct-11	Nov-11	Dec-11
Average Lending Rate	13.47	13.80	13.80	14.01	13.88	13.85
Average Personal Loan Rate	10.99	14.52	10.74	10.83	10.83	11.02
Average Mortgage Rate	14.73	14.71	15.00	14.86	14.17	14.03
Average Time Deposit Rate	3.10	3.20	2.70	3.30	3.30	3.70
Average Savings Rate	2.01	2.01	2.01	2.10	2.00	2.02
Average Rate on CDs	2.50	3.00	3.00	3.00	3.00	3.00

	Jan-12	Feb-12	Mar-12	Apr-12	May-12	Jun-12
Average Lending Rate	13.42	13.38	13.26	13.89	12.88	13.42
Average Personal Loan Rate	11.02	14.02	13.90	14.70	14.01	14.02
Average Mortgage Rate	14.66	14.14	15.00	13.41	14.40	13.86
Average Time Deposit Rate	3.40	3.30	3.80	4.10	3.70	3.80
Average Savings Rate	2.00	2.02	2.02	2.00	2.02	2.02
Average Rate on CDs	2.50	3.00	2.00	2.50	2.50	3.00

	Jul-12	Aug-12	Sep-12	Oct-12	Nov-12	Dec-12
Average Lending Rate	13.74	13.89	13.62	13.68	13.84	13.20
Average Personal Loan Rate	13.94	13.96	14.06	13.92	13.36	14.04
Average Mortgage Rate	13.73	13.79	13.76	12.00	12.00	13.99
Average Time Deposit Rate	3.40	3.80	3.60	3.60	2.60	2.90
Average Savings Rate	2.02	2.02	2.10	2.03	2.00	2.00
Average Rate on CDs	3.00	3.00	3.00	3.00	3.00	3.00

	Jan-13	Feb-13	Mar-13	Apr-13	May-13	Jun-13
Average Lending Rate	13.67	13.51	13.02	13.65	13.18	13.63
Average Personal Loan Rate	14.79	13.02	13.21	13.87	14.17	13.91
Average Mortgage Rate	15.00	13.99	12.00	13.92	14.99	14.25
Average Time Deposit Rate	4.20	3.90	3.60	3.90	3.80	3.86
Average Savings Rate	2.00	2.00	2.00	2.05	2.00	2.01
Average Rate on CDs	3.00	3.00	3.00	2.50	3.00	2.00

	Jul-13	Aug-13	Sep-13	Oct-13	Nov-13	Dec-13
Average Lending Rate	13.54	13.18	13.53	13.49	13.74	13.73
Average Personal Loan Rate	13.99	13.99	14.03	13.98	14.14	14.01
Average Mortgage Rate	14.19	14.23	14.99	14.19	14.31	14.29
Average Time Deposit Rate	3.90	3.70	3.80	3.80	4.40	3.60
Average Savings Rate	2.01	2.01	2.01	2.01	2.01	1.99
Average Rate on CDs	3.00	3.00	3.00	3.00	3.00	2.50

Note: CDs-Certificate of Deposits

Source : Central Bank of Liberia, Monrovia, Liberia.

MONEY AND BANKING

CENTRAL BANK OF LIBERIA

1.6a: Liberian Dollar Exchange Rates - Period Averages: 2011 - 2013
(Liberian dollar per US dollar)

Period 2011	Large bills ¹		
	Buy	Sell	Middle ²
Jan	71.79	72.75	72.27
Feb	71.96	72.60	72.28
March	71.61	72.31	71.96
April	71.54	72.21	71.88
May	72.00	72.98	72.49
June	72.10	73.10	72.60
July	72.35	73.33	72.84
Aug	72.02	73.00	72.51
Sep	71.58	72.58	72.08
Oct	71.88	72.69	72.29
Nov	71.10	72.10	71.60
Dec	71.43	72.43	71.93
Quarter 1	71.79	72.55	72.17
Quarter 2	71.88	72.76	72.32
Quarter 3	71.98	72.97	72.48
Quarter 4	71.47	72.41	71.94

Period 2012	Large bills ¹		
	Buy	Sell	Middle ²
Jan	72.44	73.40	72.92
Feb	73.00	74.00	73.50
Mar	73.11	74.11	73.61
Apr	73.5	74.5	74.00
May	74.41	75.37	74.89
Jun	75.04	76.04	75.54
Jul	73.62	74.58	74.10
Aug	72.99	73.99	73.49
Sep	72.84	73.8	73.32
Oct	71.56	72.56	72.06
Nov	71.75	72.75	72.25
Dec	72.00	73.00	72.50
Quarter 1	72.85	73.84	73.34
Quarter 2	74.32	75.30	74.81
Quarter 3	73.15	74.12	73.64
Quarter 4	71.77	72.77	72.27

Period 2013	Large bills ¹		
	Buy	Sell	Middle ²
Jan	73.46	74.46	73.96
Feb	74.00	75.00	74.50
Mar	74.00	75.00	74.50
Apr	74.54	75.54	75.04
May	75.13	76.13	75.63
Jun	76.04	77.04	76.54
Jul	76.56	77.56	77.06
Aug	78.11	79.11	78.61
Sep	79.14	80.14	79.64
Oct	80.07	81.07	80.57
Nov	80.48	81.48	80.98
Dec	81.38	82.38	81.88
Quarter 1	73.82	74.82	74.32
Quarter 2	75.24	76.24	75.74
Quarter 3	77.94	78.94	78.44
Quarter 4	80.64	81.64	81.14

²Average of buying and selling rates.

Source : Central Bank of Liberia, Monrovia, Liberia.

MONEY AND BANKING

CENTRAL BANK OF LIBERIA

1.7: Liberian Dollar Exchange Rates - End of Period: 2011 - 2013

(Liberian dollars per US dollar)

Months	2011	2012	2013
Jan	72.50	73.50	74.50
Feb	72.25	73.50	74.50
Mar	72.00	74.00	74.50
Apr	72.50	74.00	75.50
May	72.50	76.00	76.50
Jun	73.00	74.50	76.50
Jul	72.50	73.50	77.50
Aug	72.50	73.50	79.50
Sep	72.00	73.00	80.00
Oct	72.00	72.50	81.00
Nov	71.50	72.50	81.50
Dec	72.50	72.50	82.50

Source : Central Bank of Liberia, Monrovia, Liberia.

MONEY AND BANKING

CENTRAL BANK OF LIBERIA

1.8: Liberian Dollar Exchange Rates Nov. - Dec., 2013

(Liberian dollar per US dollar)

Period	Large bills ¹			Period	Large bills ¹		
	Buy	Sell	Middle ²		Buy	Sell	Middle ²
Nov				Dec			
1	80.50	81.50	81.00	2	81.00	82.00	81.50
2	80.50	81.50	81.00	3	81.00	82.00	81.50
4	80.50	81.50	81.00	4	81.00	82.00	81.50
5	80.50	81.50	81.00	5	81.00	82.00	81.50
6	80.50	81.50	81.00	6	81.00	82.00	81.50
7	80.50	81.50	81.00	7	81.00	82.00	81.50
8	80.50	81.50	81.00	9	81.00	82.00	81.50
9	80.50	81.50	81.00	10	81.00	82.00	81.50
11	80.50	81.50	81.00	11	81.00	82.00	81.50
12	80.00	81.00	80.50	12	81.00	82.00	81.50
13	80.00	81.00	80.50	13	81.00	82.00	81.50
14	80.00	81.00	80.50	14	81.00	82.00	81.50
15	80.00	81.00	80.50	16	81.00	82.00	81.50
16	80.00	81.00	80.50	17	81.00	82.00	81.50
18	80.00	81.00	80.50	18	81.00	82.00	81.50
19	80.00	81.00	80.50	19	81.50	82.50	82.00
20	80.00	81.00	80.50	20	81.50	82.50	82.00
21	80.00	81.00	80.50	21	82.00	83.00	82.50
22	81.00	82.00	81.50	23	82.00	83.00	82.50
23	81.00	82.00	81.50	24	82.00	83.00	82.50
25	81.00	82.00	81.50	25	82.00	83.00	82.50
26	81.00	82.00	81.50	26	82.00	83.00	82.50
27	81.00	82.00	81.50	27	82.00	83.00	82.50
28	81.00	82.00	81.50	28	82.00	83.00	82.50
29	81.00	82.00	81.50	30	82.00	83.00	82.50
30	81.00	82.00	81.50	31	82.00	83.00	82.50
Average	80.48	81.48	80.98		81.38	82.38	81.88

1. US dollar bank notes of denominations 5 and higher.

2. Average of buying and selling rates.

Source: Central Bank of Liberia, Monrovia, Liberia.

MONEY AND BANKING

CENTRAL BANK OF LIBERIA

1.9: Commercial Banks' Inflows and Outflows: 2011 - 2013

(Thousands of United States Dollars)

Commercial Banks' Inflows and Outflows - 2011

	Jan-11	Feb-11	Mar-11	Apr-11	May-11	Jun-11	Jan-Jun Total
Inflows	75,593	104,288	94,972	80,030	137,596	125,148	617,627
Outflows	103,536	110,764	112,269	95,329	134,447	140,751	697,096

	Jul-11	Aug-11	Sep-11	Oct-11	Nov-11	Dec-11	Jul-Dec Total	Grand Total
Inflows	73,234	104,986	107,089	146,420	88,806	117,145	637,680	1,255,307
Outflows	101,401	123,631	117,280	110,379	89,970	139,590	682,251	1,379,347

Commercial Banks' Inflows and Outflows - 2012

	Jan-12	Feb-12	Mar-12	Apr-12	May-12	Jun-12	Jan-Jun Total
Inflows	137,778	123,231	105,676	89,987	134,652	113,164	704,488
Outflows	89,128	95,314	96,358	107,563	141,634	132,405	662,402

	Jul-12	Aug-12	Sep-12	Oct-12	Nov-12	Dec-12	Jul-Dec Total	Grand Total
Inflows	132,726	103,591	120,663	101,971	123,942	100,849	683,742	1,388,230
Outflows	114,893	105,374	105,697	87,901	83,927	85,089	582,881	1,245,283

Commercial Banks' Inflows and Outflows - 2013

	Jan-13	Feb-13	Mar-13	Apr-13	May-13	Jun-13	Jan-Jun Total
Inflows	53,961	53,326	50,218	65,090	89,852	80,600	393,047
Outflows	69,933	63,393	88,683	84,801	125,667	151,880	584,357

Commercial Banks' Inflows and Outflows - 2013

	Jul-13	Aug-13	Sep-13	Oct-13	Nov-13	Dec-13	Jul-Dec Total	Grand Total
Inflows	75,643	57,598	72,761	102,556	92,998	146,032	547,588	940,635
Outflows	108,467	49,621	125,275	116,859	88,483	127,529	616,234	1,200,591

NB. The figures here are exclusive of Investment

Source : Central Bank of Liberia, Monrovia, Liberia.

MONEY AND BANKING

1.10b: Central Bank of Liberia Fx Auction - 2011

Auction No.	Date	FX Offered for sale by CBL (US\$)	Auction Rate L\$/US	Total Purchased US\$	No. of Accepted Bids	No. of Rejected Bids	Value of Rejected Bids (US\$)	Over/(Under) Subscription (US\$)	Total Value of Bids Submitted by Participating Banks/FX Bureaux (US\$)
240	5-Jan-11	1,000,000.00	71.4990	1,000,000.00	15	2	100,000.00	(535,000.00)	1,535,000.00
241	12-Jan-11	750,000.00	72.0000	750,000.00	15	1	110,000.00	(110,000.00)	860,000.00
242	19-Jan-11	1,000,000.00	72.3500	1,000,000.00	13	1	240,000.00	(240,000.00)	1,240,000.00
243	26-Jan-11	1,000,000.00	72.4000	1,000,000.00	17	1	540,000.00	(540,000.00)	1,540,000.00
244	2-Feb-11	750,000.00	72.7000	750,000.00	11	7	590,730.00	(590,730.00)	1,340,730.00
245	9-Feb-11	750,000.00	72.1000	750,000.00	13	-	-	180,700.00	930,700.00
246	16-Feb-11	750,000.00	71.9000	750,000.00	12	1	50,000.00	260,000.00	1,010,000.00
247	23-Feb-11	500,000.00	72.2000	500,000.00	11	2	100,000.00	(207,000.00)	707,000.00
248	2-Mar-11	500,000.00	71.7500	500,000.00	13	0	-	191,500.00	691,500.00
249	9-Mar-11	400,000.00	71.8599	400,000.00	10	4	260,000.00	260,000.00	660,000.00
250	16-Mar-11	400,000.00	71.9000	400,000.00	10	0	45,000.00	45,000.00	445,000.00
251	23-Mar-11	400,000.00	72.3000	400,000.00	15	6	272,700.00	272,700.00	672,700.00
252	30-Mar-11	400,000.00	72.4500	400,000.00	8	8	315,000.00	315,000.00	715,000.00
253	6-Apr-11	400,000.00	71.9000	400,000.00	9	6	290,000.00	290,000.00	690,000.00
254	13-Apr-11	400,000.00	71.8000	400,000.00	9	8	465,000.00	465,000.00	865,000.00
255	20-Apr-11	400,000.00	71.8500	400,000.00	12	4	385,000.00	385,000.00	785,000.00
256	27-Apr-11	400,000.00	72.0000	400,000.00	13	3	344,240.00	344,240.00	744,240.00
257	4-May-11	500,000.00	72.3500	500,000.00	12	8	419,387.28	419,387.28	919,387.28
258	11-May-11	500,000.00	72.1000	500,000.00	14	0	-	125,189.17	625,189.17
259	18-May-11	500,000.00	72.1000	500,000.00	11	8	-	365,600.00	865,600.00
260	25-May-11	500,000.00	72.2000	500,000.00	13	10	-	457,380.00	957,380.00
261	1-Jun-11	500,000.00	72.2500	500,000.00	12	11	-	414,860.00	914,860.00
262	8-Jun-11	750,000.00	72.3000	750,000.00	18	9	-	401,200.00	1,151,200.00
263	15-Jun-11	750,000.00	72.2000	750,000.00	20	11	46,000.00	519,774.98	1,269,774.98
264	22-Jun-11	750,000.00	72.3250	750,000.00	18	8	190,000.00	575,000.00	1,325,000.00
265	29-Jun-11	1,000,000.00	72.2500	1,000,000.00	27	1	195,000.00	275,000.00	1,275,000.00
Total		15,950,000.00		15,950,000.00	351	120	4,958,057.28	4,339,801.43	24,735,261.43

Source : Central Bank of Liberia, Monrovia, Liberia.

MONEY AND BANKING

1.10b: Central Bank of Liberia Fx Auction - 2011

Auction No.	Date	FX Offered for sale by CBL (US\$)	Auction Rate L\$/US	Total Purchased US\$	No. of Accepted Bids	No. of Rejected Bids	Value of Rejected Bids (US\$)	Over/(Under) Subscription (US\$)	Total Value of Bids Submitted by Participating Banks/FX Bureaux (US\$)
266	6-Jul-11	1,000,000.00	72.3500	1,000,000.00	31	6	20,000.00	396,870.00	1,396,870.00
267	13-Jul-11	750,000.00	72.4000	750,000.00	21	3	-	200,000.00	950,000.00
268	20-Jul-11	750,000.00	72.4000	750,000.00	22	8	-	443,000.00	1,193,000.00
269	27-Jul-11	1,000,000.00	72.2500	1,000,000.00	22	-	20,000.00	90,000.00	910,000.00
270	3-Aug-11	600,000.00	72.4500	600,000.00	15	14	20,000.00	596,000.00	1,196,000.00
271	10-Aug-11	600,000.00	72.2000	600,000.00	19	5	-	372,000.00	972,000.00
272	17-Aug-11	500,000.00	72.2000	500,000.00	16	8	161,020.00	540,995.00	1,040,995.00
273	24-Aug-11	500,000.00	72.3500	500,000.00	12	9	100,000.00	415,280.00	915,280.00
274	31-Aug-11	500,000.00	72.2500	500,000.00	15	3	-	290,000.00	790,000.00
275	7-Sep-11	500,000.00	72.2100	500,000.00	13	11	-	447,900.00	947,900.00
276	14-Sep-11	500,000.00	72.2500	500,000.00	14	5	150,000.00	358,055.00	858,055.00
277	21-Sep-11	500,000.00	72.2889	500,000.00	13	13	50,000.00	605,000.00	1,105,000.00
278	28-Sep-11	500,000.00	72.1500	500,000.00	14	2	100,000.00	149,100.00	649,100.00
279	5-Oct-11	500,000.00	72.3500	500,000.00	17	0	500,000.00	433,300.00	933,300.00
280	12-Oct-11	1,000,000.00	72.0765	1,000,000.00	17	0	100,000.00	55,000.00	1,055,000.00
281	19-Oct-11	500,000.00	72.3000	500,000.00	10	6	-	167,500.00	667,500.00
282	26-Oct-11	500,000.00	72.2500	500,000.00	12	4	20,000.00	92,150.00	592,150.00
283	2-Nov-11	500,000.00	71.9000	500,000.00	14	2	0.00	160,000.00	660,000.00
284	9-Nov-11	500,000.00	71.2500	500,000.00	14	1	0.00	67,270.00	567,270.00
285	16-Nov-11	500,000.00	71.6500	500,000.00	13	6	0.00	183,000.00	683,000.00
286	23-Nov-11	500,000.00	71.6999	500,000.00	14	2	0.00	145,000.00	645,000.00
287	30-Nov-11	500,000.00	71.9000	500,000.00	13	7	0.00	322,900.00	822,900.00
288	7-Dec-11	500,000.00	71.8500	500,000.00	14	6	0.00	318,540.00	818,540.00
289	14-Dec-11	500,000.00	71.8000	500,000.00	13	3	0.00	165,425.00	665,425.00
290	21-Dec-11	500,000.00	71.8500	500,000.00	14	1	50,000.00	122,000.00	622,000.00
Special Window	22-Dec-11	8,000,000.00	71.0000	8,000,000.00	0.00	0.00	0.00	0.00	0.00
291	28-Dec-11	500,000.00	71.9889	500,000.00	14	4	50,000.00	242,360.00	742,360.00
Total		23,200,000.00		23,200,000.00	406	129	1,341,020.00	7,378,645.00	22,398,645.00

Source : Central Bank of Liberia, Monrovia, Liberia.

MONEY AND BANKING

1.10c Central Bank of Liberia Fx Auction - 2012

Auction No.	Date	FX Offered for sale by CBL (US\$)	Auction Rate L\$/US	Total Purchased US\$	No. of Accepted Bids	No. of Rejected Bids	Value of Rejected Bids (US\$)	Over/(Under) Subscription (US\$)	Total Value of Bids Submitted by Participating Banks/FX Bureaux (US\$)
292	4-Jan-12	500,000.00	72.2000	500,000.00	16	8	0.00	467,300.00	967,300.00
293	11-Jan-12	750,000.00	72.5000	750,000.00	20	10	0.00	506,340.00	1,256,340.00
294	18-Jan-12	1,000,000.00	72.4990	1,000,000.00	23	0	0.00	213,000.00	1,213,000.00
295	25-Jan-12	1,000,000.00	72.5000	1,000,000.00	29	0	0.00	419,000.00	1,419,000.00
Special Window	25-Jan-12	375,000.00	71.5000	375,000.00	-	-	-	-	-
Special Window	26-Jan-12	125,000.00	72.5000	125,000.00	-	-	-	-	-
296	1-Feb-12	1,500,000.00	72.3000	1,500,000.00	32	0	86,098.13	343,498.13	1,843,498.13
297	8-Feb-12	1,500,000.00	72.4000	1,500,000.00	35	0	0.00	634,834.00	2,134,834.00
298	15-Feb-12	1,500,000.00	72.6000	1,500,000.00	34	7	0.00	1,123,548.21	2,623,548.21
Special Window	21-Feb-12	500,000.00	73.0000	500,000.00	-	-	-	-	-
299	22-Feb-12	1,000,000.00	72.7665	1,000,000.00	29	13	0.00	1,158,667.00	2,158,667.00
300	29-Feb-12	1,000,000.00	73.0000	1,000,000.00	28	15	0.00	1,387,100.00	2,387,100.00
301	7-Mar-12	500,000.00	73.4900	500,000.00	15	23	150,000.00	1,152,200.00	1,652,200.00
302	16-Mar-12	500,000.00	73.5900	500,000.00	16	9	50,000.00	377,000.00	877,000.00
303	21-Mar-12	500,000.00	73.8000	500,000.00	17	19	250,000.00	1,073,200.00	1,573,200.00
304	28-Mar-12	500,000.00	73.9999	500,000.00	13	31	224,492.56	1,422,592.56	1,922,592.56
305	4-Apr-12	750,000.00	74.2400	750,000.00	17	20	0.00	744,000.00	1,494,000.00
306	11-Apr-12	1,000,000.00	74.4000	1,000,000.00	24	21	375,000.00	1,355,500.00	2,355,500.00
307	18-Apr-12	1,000,000.00	74.2000	1,000,000.00	22	11	100,000.00	1,112,240.00	2,112,240.00
308	25-Apr-12	1,000,000.00	74.4500	1,000,000.00	25	11	65,000.00	1,362,000.00	2,362,000.00
309	2-May-12	1,000,000.00	74.5000	1,000,000.00	31	7	-	1,194,000.00	2,194,000.00
Special Window	8-May-12	1,000,000.00	74.0000	1,000,000.00	-	-	-	-	-
310	9-May-12	1,000,000.00	74.7100	1,000,000.00	22	19	200,000.00	1,630,000.00	2,630,000.00
Special Window	15-May-12	1,000,000.00	74.5000	1,000,000.00	-	-	-	-	-
311	16-May-12	1,000,000.00	74.8500	1,000,000.00	23	10	-	1,079,000.00	2,079,000.00
312	23-May-12	2,200,000.00	74.8500	2,200,000.00	36	0	185,513.51	1,291,663.51	3,491,663.51
313	30-May-12	2,200,000.00	74.9000	2,200,000.00	35	0	-	1,934,000.00	4,134,000.00
314	6-Jun-12	3,000,000.00	74.7500	3,000,000.00	41	0	-	1,654,764.90	4,654,764.90
315	13-Jun-12	3,000,000.00	74.4525	3,000,000.00	43	0	-	1,683,000.00	4,683,000.00
316	20-Jun-12	3,000,000.00	74.1000	3,000,000.00	36	0	-	766,167.50	3,766,167.50
317	27-Jun-12	2,000,000.00	73.9525	2,000,000.00	34	0	-	1,282,500.00	3,282,500.00
Total		36,900,000.00		36,900,000.00	696	234	1,686,104.20	27,367,115.81	61,267,115.81

Source : Central Bank of Liberia, Monrovia, Liberia.

MONEY AND BANKING

1.10c Central Bank of Liberia Fx Auction - 2012 (continued)

Auction No.	Date	FX Offered for sale by CBL (US\$)	Auction Rate LS/US	Total Purchased US\$	No. of Accepted Bids	No. of Rejected Bids	Value of Rejected Bids (US\$)	Over/(Under) Subscription (US\$)	Total Value of Bids Submitted by Participating Banks/FX Bureaux (US\$)
318	4-Jul-12	1,000,000.00	73.7500	1,000,000.00	30	-	-	1,040,000.00	2,040,000.00
Special Window	Jul 10-Jul 16, 2012	500,000.00	73.7500	500,000.00					
319	11-Jul-12	750,000.00	73.5000	750,000.00	30	-	-	1,577,500.00	2,327,500.00
Special Window	Jul 17-Jul 20, 2012	250,000.00	73.5000	250,000.00					
320	18-Jul-12	750,000.00	73.0000	750,000.00	29.00	-	-	1,315,000.00	2,065,000.00
321	25-Jul-12	1,000,000.00	73.0000	1,000,000.00	27.00	-	70,000.00	1,095,000.00	2,095,000.00
Special Window	Jul 31-Aug 6, 2012	499,978.51	73.0000	499,978.51					
322	1-Aug-12	2,000,000.00	73.0000	2,000,000.00	43	-	-	1,154,150.00	3,154,150.00
Special Window	Aug 6-Aug 10, 2012	500,000.00	72.9500	500,000.00					
323	8-Aug-12	1,000,000.00	72.9500	1,000,000.00	41.00	-	-	1,855,200.00	2,855,200.00
Special Window	Aug 14-Aug 20, 2012	499,800.00	72.7500	499,800.00					
324	15-Aug-12	1,000,000.00	72.7500	1,000,000.00	47	1	-	3,158,550.00	4,158,550.00
325	23-Aug-12	1,000,000.00	73.0000	100,000.00	33	11	100,000.00	1,663,800.00	2,663,800.00
326	29-Aug-12	900,000.00	73.0000	900,000.00	38	1	90,000.00	1,402,875.00	2,402,875.00
327	5-Sep-12	900,000.00	72.9000	900,000.00	39	2	140,000.00	1,604,100.00	2,604,100.00
328	12-Sep-12	900,000.00	72.5000	900,000.00	45	1	40,000.00	2,213,900.00	3,113,900.00
329	19-Sep-12	1,500,000.00	72.4200	1,500,000.00	41	0	50,000.00	1,378,300.00	2,878,300.00
330	26-Sep-12	1,500,000.00	72.3500	1,500,000.00	39	0	35,426.62	1,245,426.62	2,745,426.62
331	3-Oct-12	900,000.00	72.2500	900,000.00	31	0	-	1,015,000.00	1,915,000.00
332	10-Oct-12	800,000.00	71.0000	800,000.00	34	0	-	717,000.00	1,517,000.00
333	17-Oct-12	700,000.00	71.0000	700,000.00	42	0	-	2,142,190.00	2,842,190.00
334	24-Oct-12	700,000.00	71.0000	700,000.00	45	2	-	2,019,015.00	2,719,015.00
335	31-Oct-12	1,000,000.00	71.7500	1,000,000.00	15	32	50,000.00	2,080,280.00	3,080,280.00
336	7-Nov-12	1,000,000.00	71.8500	1,000,000.00	36	8	-	2,091,700.00	3,091,700.00
337	14-Nov-12	700,000.00	71.2500	700,000.00	41	0	-	1,688,360.00	2,388,360.00
338	21-Nov-12	500,000.00	71.2500	500,000.00	41	0	-	2,013,650.00	2,513,650.00
339	28-Nov-12	500,000.00	71.7500	500,000.00	37	5	-	1,990,000.00	2,490,000.00
340	5-Dec-12	750,000.00	71.8000	750,000.00	38	1	-	1,635,000.00	2,385,000.00
341	12-Dec-12	750,000.00	71.9000	750,000.00	39	0	20,000.00	1,789,000.00	2,539,000.00
342	19-Dec-12	1,000,000.00	71.8000	1,000,000.00	48	0	-	2,468,500.00	3,468,500.00
343	26-Dec-12	700,000.00	71.8500	700,000.00	50	2	40,000.00	3,090,000.00	3,830,000.00
Total		26,449,778.51		25,549,778.51	979	66	635,426.62	45,443,496.62	69,883,496.62

Source : Central Bank of Liberia, Monrovia, Liberia.

MONEY AND BANKING
 1.10c Central Bank of Liberia FX Auction - 2013

CENTRAL BANK OF LIBERIA

Auction No.	Date	FX Offered for sale by CBL (US\$)	Auction Rate LS/US	Total Purchased US\$	No. of Accepted Bids	No. of Rejected Bids	Value of Rejected Bids (US\$)	Over/(Under) Subscription (US\$)	Total Value of Bids Submitted by Participating Banks/FX Bureaux (US\$)
344	2-Jan-13	500,000.00	72.0000	500,000.00	51	-	25,000.00	3,160,600.00	3,660,600.00
SPECIAL WINDOW	3-Jan-13	500,000.00	72.0000	500,000.00	-	-	-	-	0.00
345	9-Jan-13	500,000.00	72.5000	500,000.00	40	23.00	185,768.00	4,448,668.00	4,948,668.00
SPECIAL WINDOW	9-Jan-13	500,000.00	72.0000	500,000.00	-	-	-	-	-
346	16-Jan-13	1,000,000.00	72.8500	1,000,000.00	48.00	19.00	39,137.00	4,431,317.00	5,431,317.00
SPECIAL WINDOW	16-Jan-13	912,500.00	72.5000	912,500.00	-	-	-	-	-
SPECIAL WINDOW	17-Jan-13	87,500.00	72.8500	87,500.00	-	-	-	-	-
347	23-Jan-13	1,500,000.00	73.0000	1,500,000.00	65	3.00	-	4,085,420.00	5,585,420.00
SPECIAL WINDOW	23-Jan-13	729,900.00	72.8500	729,900.00	-	-	-	-	-
SPECIAL WINDOW	24-Jan-13	270,100.00	73.0000	270,100.00	-	-	-	-	-
348	30-Jan-13	1,500,000.00	73.0000	1,500,000.00	75	-	-	3,868,420.00	5,368,420.00
SPECIAL WINDOW	30-Jan-13	1,000,000.00	73.0000	1,000,000.00	-	-	-	-	0.00
349	6-Feb-13	1,500,000.00	73.0000	1,500,000.00	79	-	92,322.63	4,451,947.80	5,951,947.80
SPECIAL WINDOW	6-Feb-13	1,000,000.00	73.0000	1,000,000.00	-	-	-	-	-
350	13-Feb-13	1,000,000.00	73.3500	1,000,000.00	43	15	575,000.00	3,903,500.00	4,903,500.00
SPECIAL WINDOW	13-Feb-13	1,000,000.00	73.3500	1,000,000.00	-	-	-	-	-
351	20-Feb-13	1,250,000.00	73.2000	1,250,000.00	74	-	118,957.35	4,863,167.35	6,113,167.35
SPECIAL WINDOW	20-Feb-13	1,000,000.00	73.2000	1,000,000.00	-	-	-	-	-
352	27-Feb-13	1,250,000.00	73.1000	1,250,000.00	68	-	380,000.00	4,779,750.00	6,029,750.00
SPECIAL WINDOW	27-Feb-13	750,000.00	73.1000	750,000.00	-	-	-	-	-
SPECIAL WINDOW	6-Mar-13	1,000,000.00	73.1000	1,000,000.00	-	-	-	-	-
353	6-Mar-13	1,500,000.00	73.1000	1,500,000.00	65	-	380,000.00	3,690,200.00	5,190,200.00
SPECIAL WINDOW	14-Mar-13	750,000.00	73.2500	750,000.00	-	-	-	-	-
354	14-Mar-13	1,250,000.00	73.2500	1,250,000.00	58	-	137,000.00	4,723,700.00	5,973,700.00
SPECIAL WINDOW	20-Mar-13	750,000.00	73.2500	750,000.00	-	-	-	-	-
355	20-Mar-13	1,250,000.00	73.2500	1,250,000.00	70	-	50,000.00	5,335,070.00	6,585,070.00
SPECIAL WINDOW	27-Mar-13	750,000.00	73.6000	750,000.00	-	-	-	-	-
356	27-Mar-13	1,250,000.00	73.6000	1,250,000.00	52	21	55,000.00	5,633,400.00	6,883,400.00
357	3-Apr-13	1,250,000.00	73.7500	1,250,000.00	55	12	485,000.00	5,481,465.00	6,731,465.00
SPECIAL WINDOW	3-Apr-13	750,000.00	73.7500	750,000.00	-	-	-	-	-
358	10-Apr-13	1,250,000.00	73.9000	1,250,000.00	72	7	150,000.00	5,625,500.00	6,875,500.00
SPECIAL WINDOW	10-Apr-13	750,000.00	73.9000	750,000.00	-	-	-	-	-
359	17-Apr-13	1,250,000.00	73.9500	1,250,000.00	74	-	811,711.45	6,045,873.45	7,295,873.45
SPECIAL WINDOW	17-Apr-13	750,000.00	73.9500	750,000.00	-	-	-	-	-
360	24-Apr-13	1,250,000.00	74.0000	1,250,000.00	72	-	164,000.00	5,632,397.50	6,882,397.50
SPECIAL WINDOW	24-Apr-13	750,000.00	74.0000	750,000.00	-	-	-	-	-
361	1-May-13	1,250,000.00	74.0000	1,250,000.00	81	-	358,760.10	5,988,300.00	7,238,300.10
SPECIAL WINDOW	1-May-13	750,000.00	74.0000	750,000.00	-	-	-	-	-
362	8-May-13	1,250,000.00	74.5000	1,250,000.00	65	19	-	6,164,674.00	7,414,674.00
SPECIAL WINDOW	8-May-13	750,000.00	74.5000	750,000.00	-	-	-	-	-
363	15-May-13	1,250,000.00	74.5000	1,250,000.00	78	1	-	6,093,300.00	7,343,300.00
SPECIAL WINDOW	15-May-13	750,000.00	74.5000	750,000.00	-	-	-	-	-
364	22-May-13	1,250,000.00	74.7500	1,250,000.00	76	8	50,400.00	5,959,140.00	7,209,140.00
SPECIAL WINDOW	22-May-13	750,000.00	74.7500	750,000.00	-	-	-	-	-
365	29-May-13	1,250,000.00	74.9000	1,250,000.00	81	2	280,870.00	6,527,780.00	7,777,780.00
SPECIAL WINDOW	29-May-13	750,000.00	74.9000	750,000.00	-	-	-	-	-
366	5-Jun-13	1,250,000.00	75.0000	1,250,000.00	80	-	450,000.00	5,970,425.00	7,220,425.00
SPECIAL WINDOW	5-Jun-13	750000	15-Mar-00	750,000.00	-	-	-	-	-
367	12-Jun-13	1250000	15-Mar-00	1,250,000.00	89.0000	0.00	410100	6447385	7,697,385.00
SPECIAL WINDOW	12-Jun-13	750000	12-Mar-00	750,000.00	-	-	-	-	-
368	19-Jun-13	1250000	15-Mar-00	1,250,000.00	85.0000	9.00	180000	6255800	7,505,800.00
SPECIAL WINDOW	19-Jun-13	750000	15-Mar-00	750,000.00	-	-	-	-	-
369	26-Jun-13	1250000	15-Mar-00	1,250,000.00	105.0000	3.00	189500	6901300	8,151,300.00
SPECIAL WINDOW	26-Jun-13	750000	15-Mar-00	750,000.00	-	-	-	-	-
Total		52250000		52,250,000.00	1801.0000	142.00	5568526.53	136468500.1	167,968,500.20

Source : Central Bank of Liberia, Monrovia, Liberia.

CENTRAL BANK OF LIBERIA

MONEY AND BANKING

L10c Central Bank of Liberia Fx Auction - 2013 (continue)

Auction No.	Date	FX Offered for sale by CBL (US\$)	Auction Rate L\$/US	Total Purchased US\$	No. of Accepted Bids	No. of Rejected Bids	Value of Rejected Bids (US\$)	Over/(Under) Subscription (US\$)	Total Value of Bids Submitted by Participating Banks/FX Bureaux (US\$)
370	3-Jul-13	1,250,000.00	75.5000	1,250,000.00	103	-	403,170.00	6,916,622.00	8,166,622.00
SPECIAL WINDOW	3-Jul-13	750,000.00	75.5000	750,000.00					
371	10-Jul-13	1,250,000.00	75.5000	1,250,000.00	103	-	135,000.00	7,249,200.00	8,499,200.00
SPECIAL WINDOW	10-Jul-13	750,000.00	75.5000	750,000.00					
372	17-Jul-13	1,250,000.00	76.0000	1,250,000.00	105	7	520,000.00	7,021,379.06	8,271,379.06
SPECIAL WINDOW	17-Jul-13	500,000.00	76.0000	500,000.00					
373	24-Jul-13	500,000.00	76.0000	500,000.00	109	-	816,000.00	6,715,275.00	7,215,275.00
SPECIAL WINDOW	24-Jul-13	500,000.00	76.0000	500,000.00					
374	31-Jul-13	500,000.00	76.5000	500,000.00	126	4	120,000.00	7,948,336.00	8,448,336.00
SPECIAL WINDOW	31-Jul-13	500,000.00	76.5000	500,000.00					
375	7-Aug-13	500,000.00	77.0000	500,000.00	113	18	174,150.00	7,514,471.00	8,014,471.00
SPECIAL WINDOW	7-Aug-13	500,000.00	77.0000	500,000.00					
376	14-Aug-13	400,000.00	77.5000	400,000.00	137	14	-	8,247,910.00	8,647,910.00
SPECIAL WINDOW	14-Aug-13	350,000.00	77.5000	350,000.00					
377	21-Aug-13	400,000.00	77.5000	400,000.00	130	1	54,970.00	7,221,960.00	7,621,960.00
SPECIAL WINDOW	21-Aug-13	350,000.00	77.5000	350,000.00					
378	28-Aug-13	400,000.00	78.0000	400,000.00	101	5	105,000.00	4,287,360.00	4,687,360.00
SPECIAL WINDOW	28-Aug-13	350,000.00	78.0000	350,000.00					
379	4-Sep-13	350,000.00	78.5000	350,000.00	96	23	313,474.00	7,427,074.00	7,827,074.00
SPECIAL WINDOW	11-Sep-13	350,000.00	78.5000	350,000.00					
380	11-Sep-13	400,000.00	78.5000	400,000.00	121	1	0.00	6,764,730.00	7,164,730.00
381	18-Sep-13	750,000.00	78.5000	750,000.00	117	0	40,475.00	5,050,445.00	5,800,445.00
382	25-Sep-13	750,000.00	78.7500	750,000.00	98	1	25,000.00	6,174,550.00	6,924,550.00
383	2-Oct-13	750,000.00	79.0000	750,000.00	112	1	10,000.00	6,579,127.00	7,329,127.00
384	9-Oct-13	750,000.00	79.5000	750,000.00	117	10	120,125.00	7,042,400.00	7,792,400.00
385	16-Oct-13	500,000.00	79.5000	500,000.00	96	2	1,003,000.00	6,137,000.00	6,637,000.00
386	23-Oct-13	500,000.00	79.5000	500,000.00	124	0	330,824.00	6,318,009.00	6,818,009.00
387	30-Oct-13	500,000.00	79.5000	500,000.00	124	0	270,000.00	6,613,787.50	6,613,787.50
388	6-Nov-13	500,000.00	79.5000	500,000.00	118	0	66,520.00	6,177,370.00	6,677,370.00
389	13-Nov-13	500,000.00	79.5500	500,000.00	94	0	302,000.00	6,021,750.00	6,521,750.00
390	20-Nov-13	500,000.00	79.5000	500,000.00	85	17	7,435.00	5,088,585.00	5,588,585.00
391	27-Nov-13	300,000.00	79.5000	300,000.00	85	3	560,000.00	6,366,055.00	6,666,055.00
392	4-Dec-13	300,000.00	79.7500	300,000.00	58	32	160,000.00	7,118,875.00	7,418,875.00
393	11-Dec-13	300,000.00	79.7500	300,000.00	57	21	3,500.00	6,569,990.00	6,869,990.00
394	18-Dec-13	300,000.00	79.5000	300,000.00	51	15	120,000.00	6,569,990.00	6,744,510.00
Total		19,700,000.00		19,700,000.00	2,580	175	5,660,643.00	164,645,250.56	178,966,770.56

Source : Central Bank of Liberia, Monrovia, Liberia.

REAL SECTOR

CENTRAL BANK OF LIBERIA

2.1b: Harmonized Consumer Price Index (HCPI) -2011

Function	Weight (%)	Jan-11	Feb-11	Mar-11	Apr-11	May-11	Jun-11
Food & Non-alcoholic Beverages	45.20	182.11	184.33	181.13	180.83	183.77	189.34
Alcoholic Beverages, Tobacco & Narcotics	3.03	151.75	152.23	152.49	153.59	154.17	156.16
Clothing & Footwear	7.75	164.90	165.00	164.76	167.08	168.16	168.40
Housing, Water, Electricity, Gas & other fuels	12.00	122.33	121.50	122.88	125.47	126.63	126.57
Furnishings, Household Equipment & Routine Maintenance of the House	5.25	172.80	174.43	174.09	174.44	175.44	175.62
Health	3.91	104.05	104.05	104.05	104.05	104.05	104.05
Transport	6.11	174.87	176.23	197.02	198.76	206.76	206.79
Communication	1.53	86.44	86.44	86.40	86.39	86.47	86.48
Recreation & Culture	3.85	131.35	131.36	133.68	137.75	138.07	138.13
Education	3.20	100.00	100.00	100.00	100.00	100.00	100.00
Restaurants & Hotels	4.64	261.33	261.36	261.65	261.37	262.79	266.52
Miscellaneous Goods & Services	3.53	133.31	128.26	128.80	129.59	135.39	135.86
General Index	100.00	164.61	165.53	165.61	166.29	168.69	171.48

Function	Weight (%)	Jul-11	Aug-11	Sep-11	Oct-11	Nov-11	Dec-11
Food & Non-alcoholic Beverages	45.20	206.36	210.09	200.35	207.67	201.93	202.19
Alcoholic Beverages, Tobacco & Narcotics	3.03	155.58	155.44	157.38	157.58	156.92	161.23
Clothing & Footwear	7.75	169.61	169.04	168.24	168.63	167.4	168.77
Housing, Water, Electricity, Gas & other fuels	12.00	128.85	129.56	129.25	129.23	130.35	128.88
Furnishings, Household Equipment & Routine Maintenance of the House	5.25	187.47	187.05	189.98	190.38	189.08	189.7
Health	3.91	104.05	104.05	104.05	104.05	104.05	104.05
Transport	6.11	206.38	206.30	205.3	205.49	204.93	204.82
Communication	1.53	86.51	86.47	86.42	86.44	86.35	86.40
Recreation & Culture	3.85	137.02	136.85	136.62	136.73	136.36	136.54
Education	3.20	100.00	100.00	100.00	100.00	100.00	100.00
Restaurants & Hotels	4.64	267.10	266.32	265.32	265.81	264.20	264.97
Miscellaneous Goods & Services	3.53	135.54	135.03	134.77	132.01	134.32	134.57
General Index	100.00	180.09	181.73	177.31	180.62	177.93	178.19

The Harmonized Consumer Price Index (HCPI) is an amalgamation of the Classification of Individual Consumption by Purpose (COICOP), consisting of twelve functions (major groups) together with the Monrovia Consumer Price Index (MCPI) and its weights obtained from the 1964 limited expenditure survey. The Survey sample comprised wage-earner and clerical-employee households of two or more persons with monthly income not exceeding US\$250.

Sources : Liberia Institute for Statistics & Geo-Information Services (LISGIS) and Central Bank of Liberia (CBL)

REAL SECTOR

CENTRAL BANK OF LIBERIA

2.1c: Harmonized Consumer Price Index (HCPI) - 2012

Function	Weight (%)	Jan-12	Feb-12	Mar-12	Apr-12	May-12	Jun-12
Food & Non-alcoholic Beverages	45.20	203.80	209.91	204.29	202.02	202.79	210.47
Alcoholic Beverages, Tobacco & Narcotics	3.03	164.84	165.82	159.25	157.96	157.03	156.62
Clothing & Footwear	7.75	170.57	171.58	171.82	172.52	174.09	175.32
Housing, Water, Electricity, Gas & other fuels	12.00	130.42	131.30	131.92	130.94	132.63	132.07
Furnishings, Household Equipment & Routine Maintenance of the House	5.25	186.30	187.36	187.55	187.24	188.86	190.03
Health	3.91	104.05	104.05	104.05	104.05	104.05	104.05
Transport	6.11	204.55	205.23	207.02	208.96	209.74	209.25
Communication	1.53	86.52	86.60	86.60	86.66	86.78	86.86
Recreation & Culture	3.85	137.07	137.38	137.43	137.64	138.12	138.47
Education	3.20	100.00	100.00	100.00	100.00	100.00	100.00
Restaurants & Hotels	4.64	267.28	268.64	268.90	269.81	271.89	273.41
Miscellaneous Goods & Services	3.53	135.36	136.79	136.94	137.44	138.25	139.78
General Index	100.00	179.31	182.51	180.00	179.05	179.97	183.63

Function	Weight (%)	Jul-12	Aug-12	Sep-12	Oct-12	Nov-12	Dec-12
Food & Non-alcoholic Beverages	45.20	217.83	225.86	219.61	220.26	225.16	226.78
Alcoholic Beverages, Tobacco & Narcotics	3.03	157.44	157.03	164.25	167.30	165.38	160.37
Clothing & Footwear	7.75	172.71	171.60	175.38	174.27	172.76	173.87
Housing, Water, Electricity, Gas & other fuels	12.00	135.24	130.96	132.12	132.27	131.75	130.65
Furnishings, Household Equipment & Routine Maintenance of the House	5.25	188.11	187.27	188.62	198.17	192.66	190.40
Health	3.91	104.05	104.05	104.05	104.05	101.35	99.32
Transport	6.11	205.37	205.49	206.11	218.23	217.48	226.23
Communication	1.53	86.68	86.60	86.58	86.41	86.44	86.47
Recreation & Culture	3.85	137.70	137.37	137.28	145.98	146.08	146.21
Education	3.20	100.00	100.00	100.00	100.00	100.00	100.00
Restaurants & Hotels	4.64	270.04	269.00	269.43	266.49	266.94	270.57
Miscellaneous Goods & Services	3.53	137.44	137.05	136.55	142.70	142.70	141.63
General Index	100.00	186.55	189.45	187.38	189.35	190.92	191.93

The Harmonized Consumer Price Index (HCPI) is an amalgamation of the Classification of Individual Consumption by Purpose (COICOP), consisting of twelve functions (major groups) together with the Monrovia Consumer Price Index (MCPI) and its weights obtained from the 1964 limited expenditure survey. The Survey sample comprised wage-earner and clerical-employee households of two or more persons with monthly income not exceeding US\$250.

Sources : Liberia Institute for Statistics & Geo-Information Services (LISGIS) and Central Bank of Liberia (CBL)

REAL SECTOR

CENTRAL BANK OF LIBERIA

2.1c: Harmonized Consumer Price Index (HCPI) - 2013

Function	Weight (%)	Jan-13	Feb-13	Mar-13	Apr-13	May-13	Jun-13
Food & Non-alcoholic Beverages	45.20	231.06	226.30	232.23	232.34	222.84	233.85
Alcoholic Beverages, Tobacco & Narcotics	3.03	164.33	170.39	169.31	165.44	163.28	168.84
Clothing & Footwear	7.75	169.13	175.72	174.38	172.43	174.64	179.75
Housing, Water, Electricity, Gas & other fuels	12.00	131.38	131.03	131.68	132.28	132.39	132.01
Furnishings, Household Equipment & Routine Maintenance of the House	5.25	181.56	185.26	185.27	177.08	191.44	203.28
Health	3.91	104.05	104.05	100.68	100.68	104.05	104.05
Transport	6.11	226.92	227.58	228.80	229.07	227.93	209.78
Communication	1.53	86.66	86.73	86.73	86.73	86.87	86.99
Recreation & Culture	3.85	146.26	146.42	146.42	146.71	151.25	149.75
Education	3.20	100.00	100.00	100.00	100.00	100.00	100.00
Restaurants & Hotels	4.64	273.97	275.22	275.22	276.48	281.39	279.50
Miscellaneous Goods & Services	3.53	142.64	144.24	144.20	144.74	144.15	145.36
General Index	100.00	193.66	192.52	195.08	194.61	191.64	196.54

The Harmonized Consumer Price Index (HCPI) is an amalgamation of the Classification of Individual Consumption by Purpose (COICOP), consisting of twelve functions (major groups) together with the Monrovia Consumer Price Index (MCPI) and its weights obtained from the 1964 limited expenditure survey. The Survey sample comprised wage-earner and clerical-employee households of two or more persons with monthly income not exceeding US\$250.

Sources : Liberia Institute for Statistics & Geo-Information Services (LISGIS) and Central Bank of Liberia (CBL)

REAL SECTOR

CENTRAL BANK OF LIBERIA

2.1c: Harmonized Consumer Price Index (HCPI) - 2013 (continue)

Function	Weight (%)	Jul-13	Aug-13	Sep-13	Oct-13	Nov-13	Dec-13
Food & Non-alcoholic Beverages	45.20	236.99	244.21	239.57	245.85	243.40	244.27
Alcoholic Beverages, Tobacco & Narcotics	3.03	173.54	173.32	176.30	178.06	176.08	173.26
Clothing & Footwear	7.75	183.39	186.49	190.41	190.83	190.33	192.23
Housing, Water, Electricity, Gas & other fuels	12.00	134.21	134.10	135.54	133.98	134.25	131.78
Furnishings, Household Equipment & Routine Maintenance of the House	5.25	211.74	213.23	214.45	212.57	209.80	216.47
Health	3.91	104.05	104.05	104.05	104.05	104.05	104.05
Transport	6.11	210.11	210.46	211.81	211.81	212.89	258.72
Communication	1.53	86.99	87.26	87.39	87.51	87.56	87.68
Recreation & Culture	3.85	150.03	150.43	157.25	157.75	159.33	159.81
Education	3.20	100.00	100.00	100.00	100.00	100.00	100.00
Restaurants & Hotels	4.64	293.23	296.86	299.28	301.46	302.42	304.53
Miscellaneous Goods & Services	3.53	146.04	148.04	150.35	150.89	151.63	164.04
General Index	100.00	199.78	203.63	202.70	205.52	204.36	208.23

The Harmonized Consumer Price Index (HCPI) is an amalgamation of the Classification of Individual Consumption by Purpose (COICOP), consisting of twelve functions (major groups) together with the Monrovia Consumer Price Index (MCPI) and its weights obtained from the 1964 limited expenditure survey. The Survey sample comprised wage-earner and clerical-employee households of two or more persons with monthly income not exceeding US\$250.

Sources : Liberia Institute for Statistics & Geo-Information Services (LISGIS) and Central Bank of Liberia (CBL)

REAL SECTOR

CENTRAL BANK OF LIBERIA

2.2b: HCPI Inflation Rate - 2011 (Year-on-Year)

Function	Weight (%)	Jan-11	Feb-11	Mar-11	Apr-11	May-11	Jun-11
Food & Non-alcoholic Beverages	45.20	6.34	12.63	8.11	9.03	7.94	11.04
Alcoholic Beverages, Tobacco & Narcotics	3.03	12.86	9.58	10.59	10.92	8.90	8.42
Clothing & Footwear	7.75	4.77	6.15	6.20	8.29	9.28	8.07
Housing, Water, Electricity, Gas & other fuels	12.00	4.56	2.40	4.47	5.62	6.80	6.15
Furnishings, Household Equipment & Routine Maintenance of the House	5.25	-3.50	-3.09	-2.68	-1.52	-0.56	-2.05
Health	3.91	0.00	0.00	0.00	0.00	0.00	0.00
Transport	6.11	6.27	6.57	19.74	20.61	24.42	24.44
Communication	1.53	5.73	5.65	5.64	5.77	5.97	5.72
Recreation & Culture	3.85	1.10	0.92	2.78	6.30	6.82	6.17
Education	3.20	0.00	0.00	0.00	0.00	0.00	0.00
Restaurants & Hotels	4.64	3.91	3.50	3.78	1.79	2.94	2.91
Miscellaneous Goods & Services	3.53	-1.83	-5.13	-3.76	-2.32	2.69	1.75
General Rate of Inflation	100.00	4.74	7.45	6.54	7.39	7.58	8.78
Function	Weight (%)	Jul-11	Aug-11	Sep-11	Oct-11	Nov-11	Dec-11
Food & Non-alcoholic Beverages	45.20	15.71	15.21	6.74	14.60	12.47	16.07
Alcoholic Beverages, Tobacco & Narcotics	3.03	9.40	10.81	12.49	12.26	8.23	8.83
Clothing & Footwear	7.75	5.10	4.51	4.75	4.80	4.25	4.68
Housing, Water, Electricity, Gas & other fuels	12.00	6.34	6.21	6.06	6.23	7.46	6.50
Furnishings, Household Equipment & Routine Maintenance of the House	5.25	-0.31	-0.72	1.36	11.75	12.80	11.89
Health	3.91	-0.32	-0.32	-0.32	-0.32	-0.32	0.00
Transport	6.11	20.08	20.02	19.44	19.37	19.04	17.67
Communication	1.53	0.08	0.00	0.03	0.04	0.26	0.26
Recreation & Culture	3.85	5.05	4.83	4.65	4.20	4.85	4.83
Education	3.20	0.00	0.00	0.00	0.00	0.00	0.00
Restaurants & Hotels	4.64	2.26	1.78	1.98	1.94	3.30	3.30
Miscellaneous Goods & Services	3.53	0.94	-0.26	0.18	-1.72	3.28	3.22
General Rate of Inflation	100.00	10.60	10.27	6.21	10.68	9.88	11.45

The Harmonized Consumer Price Index (HCPI) is an amalgamation of the Classification of Individual Consumption by Purpose (COICOP), consisting of twelve functions (major groups) together with the Monrovia Consumer Price Index (MCPI) and its weights, obtained from the 1964 limited expenditure survey.

The Survey sample comprised wage-earner and clerical-employee households of two or more persons with monthly income not exceeding US\$250.

Sources : Liberia Institute for Statistics & Geo-Information Services (LISGIS) and Central Bank of Liberia (CBL)

REAL SECTOR

CENTRAL BANK OF LIBERIA

2.2c: HCPI Inflation Rate - 2012 (Year-on-Year)

Function	Weight (%)	Jan-12	Feb-12	Mar-12	Apr-12	May-12	Jun-12
Food & Non-alcoholic Beverages	45.20	11.91	13.95	12.79	11.72	10.35	11.16
Alcoholic Beverages, Tobacco & Narcotics	3.03	8.63	8.93	4.43	2.85	1.86	0.29
Clothing & Footwear	7.75	3.43	3.99	4.28	3.26	3.53	4.1
Housing, Water, Electricity, Gas & other fuels	12.00	6.61	8.07	7.36	4.36	4.74	4.35
Furnishings, Household Equipment & Routine Maintenance of the House	5.25	7.81	7.41	7.73	7.34	7.65	8.21
Health	3.91	0	0	0	0	0	0
Transport	6.11	16.97	16.46	5.07	5.13	1.44	1.19
Communication	1.53	0.1	0.18	0.23	0.32	0.36	0.44
Recreation & Culture	3.85	4.35	4.58	2.81	-0.08	0.03	0.24
Education	3.20	0	0	0	0	0	0
Restaurants & Hotels	4.64	2.28	2.79	2.77	3.23	3.46	2.59
Miscellaneous Goods & Services	3.53	1.54	6.65	6.32	6.05	2.12	2.89
General Rate of Inflation	100.00	8.93	10.3	8.69	7.67	6.69	7.08

Function	Weight (%)	Jul-12	Aug-12	Sep-12	Oct-12	Nov-12	Dec-12
Food & Non-alcoholic Beverages	45.20	5.56	7.51	9.61	6.06	11.50	12.16
Alcoholic Beverages, Tobacco & Narcotics	3.03	1.2	1.02	4.37	6.17	5.40	-0.53
Clothing & Footwear	7.75	1.82	1.52	4.24	3.34	3.20	3.02
Housing, Water, Electricity, Gas & other fuels	12.00	4.96	1.08	2.22	2.35	1.08	1.37
Furnishings, Household Equipment & Routine Maintenance of the House	5.25	0.34	0.12	-0.72	4.09	1.89	0.37
Health	3.91	0	0.00	0	0.00	-2.60	-4.55
Transport	6.11	-0.49	-0.39	0.39	6.20	6.12	10.45
Communication	1.53	0.19	0.15	0.18	-0.03	0.10	0.08
Recreation & Culture	3.85	0.49	0.38	0.48	6.76	7.13	7.09
Education	3.20	0.00	0.00	0.00	0.00	0.00	0.00
Restaurants & Hotels	4.64	1.10	1.00	1.55	0.26	1.04	2.11
Miscellaneous Goods & Services	3.53	1.40	1.50	1.32	8.10	6.24	5.25
General Rate of Inflation	100.00	3.58	4.25	5.68	4.84	7.30	7.71

The Harmonized Consumer Price Index (HCPI) is an amalgamation of the Classification of Individual Consumption by Purpose (COICOP), consisting of twelve functions (major groups) together the Monrovia Consumer Price Index (MCPI) and its weights, obtained from the 1964 limited expenditure survey.

The Survey sample comprised wage-earner and clerical-employee households of two or more persons with monthly income not exceeding US\$250.

Sources : Liberia Institute for Statistics & Geo-Information Services (LISGIS) and Central Bank of Liberia (CBL)

REAL SECTOR

CENTRAL BANK OF LIBERIA

2.2c: HCPI Inflation Rate (Year-on-Year) - 2013

Function	Weight (%)	Jan-13	Feb-13	Mar-13	Apr-13	May-13	Jun-13
Food & Non-alcoholic Beverages	45.20	13.37	7.74	13.68	15.01	9.89	11.10
Alcoholic Beverages, Tobacco & Narcotics	3.03	-0.31	2.76	6.32	4.73	3.98	7.80
Clothing & Footwear	7.75	-0.84	2.41	1.49	-0.06	0.31	2.53
Housing, Water, Electricity, Gas & other fuels	12.00	0.74	-0.21	-0.18	1.02	-0.18	-0.05
Furnishings, Household Equipment & Routine Maintenance of the House	5.25	-2.55	-1.12	-1.22	-5.43	1.37	6.97
Health	3.91	0.00	0.00	-3.25	-3.25	0.00	0.00
Transport	6.11	10.94	10.89	10.52	9.62	8.67	0.25
Communication	1.53	0.15	0.15	0.15	0.07	0.11	0.15
Recreation & Culture	3.85	6.70	6.58	6.54	6.59	9.51	8.15
Education	3.20	0.00	0.00	0	0	0.00	0.00
Restaurants & Hotels	4.64	2.50	2.45	2.35	2.47	3.49	2.23
Miscellaneous Goods & Services	3.53	5.38	5.44	5.3	5.31	4.26	3.99
General Rate of Inflation	100.00	8.00	5.48	8.38	8.69	6.48	7.03

The Harmonized Consumer Price Index (HCPI) is an amalgamation of the Classification of Individual Consumption by Purpose (COICOP), consisting of twelve functions (major groups) together the Monrovia Consumer Price Index (MCPI) and its weights, obtained from the 1964 limited expenditure survey.

The Survey sample comprised wage-earner and clerical-employee households of two or more persons with monthly income not exceeding US\$250.

Sources : Liberia Institute for Statistics & Geo-Information Services (LISGIS) and Central Bank of Liberia (CBL)

REAL SECTOR

CENTRAL BANK OF LIBERIA

2.2c: HCPI Inflation Rate (Year-on-Year) - 2013 (continue)

Function	Weight (%)	Jul-13	Aug-13	Sep-13	Oct-13	Nov-13	Dec-13
Food & Non-alcoholic Beverages	45.20	8.79	8.13	9.09	11.62	8.11	7.71
Alcoholic Beverages, Tobacco & Narcotics	3.03	10.22	10.37	7.34	6.43	6.47	8.04
Clothing & Footwear	7.75	6.18	8.68	8.57	9.50	10.17	10.56
Housing, Water, Electricity, Gas & other fuels	12.00	(0.76)	2.40	2.59	1.29	1.89	0.86
Furnishings, Household Equipment & Routine Maintenance of the House	5.25	12.56	13.86	13.69	7.27	8.90	13.69
Health	3.91	-	-	-	-	2.67	4.76
Transport	6.11	2.31	2.42	2.77	-2.94	-2.11	14.36
Communication	1.53	0.36	0.76	0.94	1.27	1.30	1.40
Recreation & Culture	3.85	8.96	9.50	14.55	8.06	9.07	9.30
Education	3.20	-	-	0.00	0.00	0.00	0.00
Restaurants & Hotels	4.64	8.58	10.36	11.08	13.12	13.29	12.55
Miscellaneous Goods & Services	3.53	6.26	8.02	10.11	5.74	6.26	15.83
General Rate of Inflation	100.00	7.10	7.49	8.18	8.54	7.04	8.49

The Harmonized Consumer Price Index (HCPI) is an amalgamation of the Classification of Individual Consumption by Purpose (COICOP), consisting of twelve functions (major groups) together the Monrovia Consumer Price Index (MCPI) and its weights, obtained from the 1964 limited expenditure survey.

The Survey sample comprised wage-earner and clerical-employee households of two or more persons with monthly income not exceeding US\$250.

Sources : Liberia Institute for Statistics & Geo-Information Services (LISGIS) and Central Bank of Liberia (CBL)

REAL SECTOR

CENTRAL BANK OF LIBERIA

2.3b: Key Output Volume - 2011

Commodity	Unit	Jan-11	Feb-11	Mar-11	Apr-11	May-11	Jun-11	Jan-Jun Total
Agriculture								
Rubber	Mt.	7,255.00	19,455.00	521.00	11,813.48	5,481	5,938	50,463.45
Cocoa Beans	Mt.	2,023.00	172.00	3,742.00	3,329.00	5,941	4,106	19,313.00
Coffee	Mt.	-	-	-	-	-	154	154.00
Round Logs	M ³	10,819.00	2,629.00	3,042.00	6,725.36	2,813	10,803	36,831.36
Sawn Timber	Pcs.	27,228.00	41,540.00	48,464.00	42,968.00	50,002	28,161	238,363.00
Fish	Kg.	-	-	-	-	-	-	-
Mining								
Gold	Ounces	1,556.00	1,127.00	1,237.00	1,595.00	1,577	1,573	8,665.00
Diamond	Carat	2,210.00	2,097.00	3,206.00	558.01	4,686	5,291	18,048.01
Iron Ore	Mt.	-	-	-	-	-	-	0.00
Manufacturing								
Cement	Mt.	2,553.00	3,507.00	2,651.00	7,263.00	3,166	9,543	28,683.00
Spirit	Litre	59,544.00	52,832.00	60,873.00	58,704.21	61,647	66,489	360,089.21
Beer	Litre	616,550.00	639,543.00	841,177.00	933,970.16	894,377	955,400	4,881,017.16
Stout	Litre	309,324.00	378,774.00	438,926.00	427,299.84	401,916	492,117	2,448,356.84
Malta	Litre	98,208.00	96,188.00	62,220.00	64,088.64	132,018	101,677	554,400.08
Soft Drink	Litre	1,182,283.00	1,109,477.00	1,237,003.00	1,374,459.84	1,166,695	939,190	7,009,107.64
Oil Paint	Gal.	1,400.00	4,080.00	3,440.00	2,760.00	3,280	1,640	16,600.00
Water Paint	Gal.	13,550.00	27,750.00	19,850.00	25,688.00	14,650	16,200	117,688.00
Varnish	Gal.	350.00	1,020.00	860.00	690.00	820	410	4,150.00
Manoline Hair Grease	Kg.	5,687.00	3,637.00	4,099.00	5,686.80	2,327	3,620	25,057.00
Thinner	Gal.	2,300.00	3,500.00	3,000.00	3,125.00	2200	2500	16,625.00
Rubbing Alcohol	Litre	22,518.00	21,035.00	-	22,518.38	32,946	34,654	133,671.48
Soap	Kg.	37,122.00	48,855.00	15,755.00	37,121.55	41,715	43,406	223,974.65
Chlorox	Litre	77,047.00	67,986.00	42,127.00	106,218.46	132,581	52,964	478,922.94
Nail	Kg.	-	-	-	-	-	-	0.00
Candle	Kg.	43,176.00	49,193.00	32,666.00	59,115.00	37,664	31,574	253,387.00
Mattresses	Pcs.	12,600.00	13,130.00	14,960.00	11,205.00	15,989	12,874	80,758.00
Finished Water ¹	Gal.	178,985,090.50	162,390,947.44	148,029,162.25	150,802,081.28	149,163,690	140,788,206	930,159,177.79

1: Water from White Plains Treatment Plant

Sources : Lands, Mines & Energy; Commerce & Industry; Forestry Development Authority (FDA);

Liberia Produce Marketing Corporation (LPMC) and Liberia Water & Sewer Corporation (LWSC), Monrovia, Liberia

REAL SECTOR

CENTRAL BANK OF LIBERIA

2.3b: Key Output Volume - 2011 -Continued

Commodity	Unit	Jul-11	Aug-11	Sep-11	Oct-11	Nov-11	Dec-11	Jul-Dec Total	Grand Total
Agriculture									
Rubber	Mt.	8,567	9,696	3,123	11,163	1,684	8,883	43,116	93,580
Cocoa Beans	Mt.	1,015	843	2,014	1,077	1,020	1,410	7,379	26,692
Coffee	Mt.	-	27	-	na	na	na	27	181
Round Logs	M ³	16,147	2,375	303	9,129	7,024	2,298	37,275	74,106
Sawn Timber	Pcs.	30,325	21,540	12,412	9,160	10,540	9,200	93,177	331,540
Fish	Kg.	-	-	-	-	-	-	-	-
Mining									
Gold	Ounces	969	1,329	1,016	443	1,210	1,196	6,163	14,828
Diamond	Carat	4,526	7,849	3,410	3,777	1,095	1,162	21,819	39,867
Iron Ore	Mt.	-	-	6,821	38,800	146,647	104,701	296,969	296,969
Manufacturing									
Cement	Mt.	7,429	9,557	6,413	6,637	10,306	11,569	51,911	80,594
Spirit	Litre	52,576	54,104	52,777	54,879	52,424	62,541	329,301	689,390
Beer	Litre	920,658	927,094	700,401	727,354	689,083	1,071,264	5,035,854	9,916,871
Stout	Litre	489,290	489,377	428,670	422,160	504,623	599,386	2,933,506	5,381,863
Malta	Litre	-	203,314	64,350	32,622	67,502	66,306	434,094	988,494
Soft Drink	Litre	1,100,117	950,998	796,644	1,027,296	1,122,422	1,519,949	6,517,426	13,526,534
Oil Paint	Gal.	3,440	1,200	2,096	2,150	4,865	4,580	18,331	34,931
Water Paint	Gal.	24,200	21,525	16,150	20,850	25,750	34,085	142,560	260,248
Varnish	Gal.	860	300	524	430	973	916	4,003	8,153
Manoline Hair Grease	Kg.	2,495	1,772	1,940	na	3,167	3,360	12,734	37,791
Thinner	Gal.	1,425	860	495	1800	2,420	2702	9,702	26,327
Rubbing Alcohol	Litre	-	13,529	24,676	28,361	20,945	-	87,511	221,182
Soap	Kg.	52,205	47,376	54,203	20,391	27,917	33,022	235,114	459,089
Chlorox	Litre	8,293	53,440	32,112	52,964	42,339	26,521	215,669	694,592
Nail	Kg.	-	-	-	-	-	-	-	-
Candle	Kg.	43,281	31,479	26,891	42,011	20,979	24,549	189,190	442,577
Mattresses	Pcs.	9,870	7,917	9,740	10,210	9,835	13,670	61,242	142,000
Finished Water ¹	Gal.	-	-	-	-	-	-	-	930,159,178

1: Water from White Plains Treatment Plant

Sources : Lands, Mines & Energy; Commerce & Industry; Forestry Development Authority (FDA);

Liberia Produce Marketing Corporation (LPMC) and Liberia Water & Sewer Corporation (LWSC), Monrovia, Liberia

REAL SECTOR

CENTRAL BANK OF LIBERIA

2.3c: Key Output Volume - 2012

Commodity	Unit	Jan-12	Feb-12	Mar-12	Apr-12	May-12	Jun-12	Jan-Jun Total
Agriculture								
Rubber	Mt.	5,766	3,564	12,125	344	947	12,097	34,843
Cocoa Beans	Mt.	1,305	1,230	963	672	674	367	5,210
Coffee	Mt.	-	-	-	38	97	-	135
Round Logs	M ³	22,509	8,177	14,256	26,027	19,547	7,949	98,466
Sawn Timber	Pcs.	34,632	50,908	7,160	30,110	20,585	10,881	154,276
Fish	Kg.	-	-	-	-	-	-	-
Mining								
Gold	Ounces	1,645	1,458	1,558	2,098	1,118	2,288	10,165
Diamond	Carat	2,856	3,288	3,802	2,644	3,400	1,282.00	17,272
Iron Ore	Mt.	132,000	396,000	462,000	396,000	189,000	-	1,575,000
Manufacturing								
Cement	Mt.	10,662	14,580	12,462	13,322	11,065	9,362	71,452
Spirit	Litre	52,453	53,100	58,243	59,624	63,063	66,234	352,717
Beer	Litre	733,228	721,010	913,481	725,199	753,233	786,849	4,633,000
Stout	Litre	309,324	378,774	438,926	385,569	370,466	490,525	2,373,584
Malta	Litre	98,208	96,188	62,220	33,343	50,157	52,953	393,070
Soft Drink	Litre	1,095,732	1,156,334	1,178,100	1,120,637	1,194,912	1,123,992	6,869,707
Oil Paint	Gal.	4,538	3,172	3,040	4,125	2,760	1,589	19,223
Water Paint	Gal.	29,245	20,235	20,627	27,180	24,840	17,975	140,102
Varnish	Gal.	1,134	793	760	1,031	690	397	4,806
Manoline Hair Grease	Kg.	4,276	1,050	4,696	1,957	3,436	4,696	20,111
Thinner	Gal.	1,745	1,470	875	1,620	1,500	860	8,070
Rubbing Alcohol	Litre	20,676	-	11,237	22,473	25,440	11,237	91,062
Soap	Kg.	35,520	68,321	20,718	32,027	28,222	20,718	205,526
Chlorox	Litre	66,238	55,587	55,984	62,131	49,546	55,984	345,468
Nail	Kg.	-	-	-	-	-	-	-
Candle	Kg.	31,574	21,011	31,563	13,640	26,250	31,563	155,601
Mattresses	Pcs.	10,050	9,833	9,970	8,975	9,039	7,750	55,617
Finished Water ¹	Gal.	68,366,386	59,415,052	52,688,677	199,794,720	185,545,039	178,825,333	744,635,206

1: Water from White Plains Treatment Plant

Sources : Lands, Mines & Energy; Commerce & Industry; Forestry Development Authority (FDA);

Liberia Produce Marketing Corporation (LPMC) and Liberia Water & Sewer Corporation (LWSC), Monrovia, Liberia

REAL SECTOR

CENTRAL BANK OF LIBERIA

2.3c: Key Output Volume - 2012 (contd.)

Commodity	Unit	Jul-12	Aug-12	Sep-12	Oct-12	Nov-12	Dec-12
Agriculture							
Rubber	Mt.	856	601	8,573	6,861	4,213	7,837
Cocoa Beans	Mt.	165	255	213	397	916	927
Coffee	Mt.	na	na	na	na	na	na
Round Logs	M ³	33,428	4,916	627	28,542	23,345	24,449
Sawn Timber	Pcs.	29,593	21,020	12,112	31,442	35,372	31,442
Fish	Kg.	-	-	-	-	-	-
Mining							
Gold	Ounces	2,161	1,131	1,835	1,753	1,463	2,102
Diamond	Carat	2,819	3,092	3,841	1,853	3,018	2,377
Iron Ore	Mt.	22,800	342,000	110,850	na	57,000	57,000
Manufacturing							
Cement	Mt.	9,370	7,759	4,695	8,016	10,585	9,714
Spirit	Litre	81,436	75,576	50,651	na	47,022	55,386
Beer	Litre	846,940	957,096	179,382	837,805	954,732	720,377
Stout	Litre	510,777	805,163	53,761	488,957	424,251	602,965
Malta	Litre	70,194	102,532	-	172,102	68,785	-
Soft Drink	Litre	863,006	648,130	649,908	935,626	894,809	1,324,274
Oil Paint	Gal.	6,116	6,322	5,529	6,018	2,360	3,697
Water Paint	Gal.	33,192	36,429	32,731	31,893	11,227	19,166
Varnish	Gal.	1,529	1,581	1,382	1,504	590	924
Manoline Hair Grease	Kg.	-	5,687	3,058	na	na	1,789
Thinner	Gal.	2,611	2,217	1,563	2,172	675	1,026
Rubbing Alcohol	Litre	12,450	21,979	28,317	na	na	19,372
Soap	Kg.	38,113	40,784	39,414	na	na	na
Chlorox	Litre	55,666	79,512	79,723	na	na	67,854
Nail	Kg.	-	-	-	-	-	-
Candle	Kg.	30,345	25,788	40,919	na	na	15,257
Mattresses	Pcs.	7,026	5,830	8,940	8,279	6,890	16,085
Finished Water ¹	Gal.	148,477,928	167,903,679	128,643,393	114,726,284	113,159,967	101,083,921

¹: Water from White Plains Treatment Plant

Sources : *Lands, Mines & Energy; Commerce & Industry; Forestry Development Authority (FDA);*

Liberia Produce Marketing Corporation (LPMC) and Liberia Water & Sewer Corporation (LWSC), Monrovia, Liberia

REAL SECTOR

CENTRAL BANK OF LIBERIA

2.3c: Key Output Volume - 2013

Commodity	Unit	Mar-13	Apr-13	May-13	Jun-13
Agriculture					
Rubber	Mt.	7,988	1,079	8,435	6,098
Cocoa Beans	Mt.	391	325	1,487	674
Coffee	Mt.	96	54	38	-
Round Logs	M ³	-	7676*	5765*	2344*
Sawn Timber	Pcs.	51,633	70,462	58,488	54,497
Fish	Kg.	-	-	-	-
Mining					
Gold	Ounces	1,887	1,309	1,727	1,199
Diamond	Carat	3,938	3,178	7,489	4,098
Iron Ore	Mt.	398,500	344,375	649,000	212,000
Manufacturing					
Cement	Mt.	6,858	14,158	20,764	18,954
Spirit	Litre	35,307	29,998	30,168	34,338
Beer	Litre	766,578	804,509	954,245	848,255
Stout	Litre	459,930	443,441	509,359	513,493
Malta	Litre	68,841	132,858	-	132,953
Soft Drink	Litre	1,372,644	1,411,711	1,365,314	1,020,773
Oil Paint	Gal.	13,482	8,647	5,649	6,538
Water Paint	Gal.	2,701	5,797	10,479	10,131
Varnish	Gal.	1,955	682	1,033	1,287
Manoline Hair Grease	Kg.	-	7,528	5,032	4,948
Thinner	Gal.	1,847	1,365	1,200	1,378
Rubbing Alcohol	Litre	12,990	15,507	20,451	22,743
Soap	Kg.	25,269	42,463	35,507	18,434
Chlorox	Litre	71,881	78,955	55,984	55,931
Nail	Kg.	na	na	na	na
Candle	Kg.	9,440	5,849	13,902	16,674
Mattresses	Pcs.	10,670	9,820	9,010	8,536
Finished Water ¹	Gal.	95,067,793	157,454,314	154,057,016	179,680,383

1: Water from White Plains Treatment Plant

* estimate

Sources : Lands, Mines & Energy; Commerce & Industry; Forestry Development Authority (FDA);

Liberia Produce Marketing Corporation (LPMC) and Liberia Water & Sewer Corporation (LWSC), Monrovia, Liberia

REAL SECTOR

CENTRAL BANK OF LIBERIA

2.3c: Key Output Volume - 2013 (continue)

Commodity	Unit	Jul-13	Aug-13	Sep-13	Oct-13	Nov-13	Dec-13
Agriculture							
Rubber	Mt.	-	7,656	5,073	1,109	11,398	5,443
Cocoa Beans	Mt.	1,085	354	578	1,376	1,151	460
Coffee	Mt.	-	-	14	-	-	-
Round Logs	M ³	7,358	14,167	18,651	1,001	-	12,470
Sawn Timber	Pcs.	48,951	27,786	28,531	34,835	44,252	32,839
Fish	Kg.	na	na	na	na	-	-
Mining							
Gold	Ounces	2,035	1,873	1,106	2,021	982	1,175
Diamond	Carat	1,726	4,980	877	5,175	3,490	5,402
Iron Ore	Mt.	491,600	331,000	255,800	555,650	407,670	523,500
Manufacturing							
Cement	Mt.	22,026	17,184	14,474	16,297	24,572	25,074
Spirits	Litre	36,614	30,250	26,801	29,999	28,079	31,298
Beer	Litre	865,423	387,432	550,571	693,402	787,118	824,741
Stout	Litre	564,680	351,759	412,553	523,512	488,070	549,791
Malta	Litre	-	66,536	71,470	65,784	145,720	na
Soft Drink	Litre	1,033,445	988,927	734,681	871,373	988,574	1,407,290
Oil Paint	Gal.	10,902	10,858	9,798	12,442	12,335	37,274
Water Paint	Gal.	4,217	9,369	10,414	11,350	12,026	35,150
Varnish	Gal.	906	1,577	1,512	1,826	1,642	2,700
Manoline Hair Grease	Kg.	5,737	5,048	5,216	4,704	3,024	4,662
Thinner	Gal.	1,643	1,812	1,699	2,189	1,720	1,820
Rubbing Alcohol	Litre	15,237	17,979	22,428	44,947	19,462	27,418
Soap	Kg.	21,627	24,371	17,862	17,645	14,650	30,233
Chlorox	Litre	63,614	61,177	82,691	45,624	56,169	66,238
Nail	Kg.	na	na	na	na	na	na
Candle	Kg.	19,709	12,485	14,459	12,579	16,170	18,816
Mattresses	Pcs.	13,850	4,090	3,140	3,610	9,020	11,030
Finished Water ¹	Gal.	189,605,833	139,226,672	193,813,515	178,375,026	153,646,882	174,652,932

1: Water from White Plains Treatment Plant

Sources : Lands, Mines & Energy; Commerce & Industry; Forestry Development Authority (FDA); Liberia Produce Marketing Corporation (LPMC) and Liberia Water & Sewer Corporation (LWSC), Monrovia, Liberia

REAL SECTOR

CENTRAL BANK OF LIBERIA

2.4b: Key Output Value - 2011

Liberian dollars

Commodity	Unit	Jan-11	Feb-11	Mar-11	Apr-11	May-11	Jun-11	Jan-Jun Total
Agriculture								
Rubber ^{3*}	Mt.	1,065,111,275.00	1,896,180,510.00	61,564,658.00	2,717,956,750	1,771,401,160.10	49,214,088.00	7,561,428,440.70
Cocoa Beans	Mt.	366,596,250.00	31,080,400.00	673,242,648.00	599,892,510	956,034,365.00	150,419,940.00	2,777,266,113.00
Coffee	Mt.	-	-	-	-	-	-	-
Round Logs ³	M ³	11,149,677.00	4,983,559.00	4,441,356.00	9,823,248	1,029,964	NA	31,427,804.02
Sawn Timber	Pcs.	1,184,418.00	1,801,507.00	2,092,482.00	1,853,066	2,178,073	NA	9,109,546.00
Fish ⁴	Kg.	-	-	-	-	-	-	-
Mining								
Gold	Ounces	88,911,020.00	84,379,293.00	96,911,491.00	127,497,677	132,079,568.69	133,975,029.41	663,754,078.98
Diamond	Carat	248463206*	58,668,536.00	108,304,038.00	14,167,692	107,521,670.35	178,383,748.09	715,508,890.92
Iron Ore	Mt.	-	-	-	-	-	-	-
Manufacturing								
Cement	Mt.	30,725,355.00	42,078,669.00	31,667,149.00	86,662,697	38,097,554.44	115,008,418.80	344,239,843.28
Spirit	Litre	4,138,250.00	3,705,400.00	3,269,100.00	3,606,975	13,646,525.00	3,646,225.00	32,012,475.00
Beer	Litre	71,932,605.00	97,483,495.00	104,318,560.00	117,647,025	117,513,585.00	126,937,865.00	635,833,135.00
Stout	Litre	54,666,800.00	76,229,520.00	84,276,400.00	82,007,040	77,135,440.00	94,446,720.00	468,761,920.00
Malta	Litre	9,695,880.00	10,536,300.00	10,728,810.00	8,375,220	8,375,220.00	17,252,415.00	64,963,845.00
Soft Drink	Litre	67,338,000.00	70,391,160.00	78,547,650.00	77,154,630	77,154,630.00	69,559,810.00	440,145,880.00
Oil Paint	Gal.	2,465,580.00	3,274,457.00	3,106,542.00	2,727,846	3,269,299.00	1,637,130.00	16,480,854.00
Water Paint	Gal.	6,239,067.00	10,099,197.00	9,062,984.00	11,324,665	6,468,282.70	7,159,474.85	50,353,670.80
Varnish	Gal.	616,395.00	818,614.00	776,635.00	681,962	817,324.75	409,282.50	4,120,212.75
Manoline Hair Grease	Kg.	502,425.00	517,597.08	391,822.20	426,967.20	406,668.90	57,499,200.00	59,744,680.38
Thinner	Gal.	1,660,250.00	2,405,478.00	2,301,065.00	2,470,875	1,754,258.00	1,996,500.00	12,588,426.00
Rubbing Alcohol	Litre	309,031.00	219,551.00	420,426.00	705,538	497,673.00	705,538.14	2,857,757.28
Soap	Kg.	4,625,790.00	3,406,195.00	3,461,636.00	2,804,758	3,322,542.91	5,019,382.50	22,640,304.01
Chlorox	Litre	2,041,056.00	1,986,616.00	1,915,378.00	3,296,021	3,922,470.15	2,437,726.50	15,599,268.11
Nail	Kg.	-	-	-	-	-	-	-
Candle	Kg.	7,850,300.00	10,061,376.00	6,735,456.00	8,729,970	8,094,958.30	7,260,726.00	48,732,786.06
Mattresses	Pcs.	21,366,882.00	25,265,446.00	33,301,257.00	23,213,839	43,104,473.54	32,057,134.76	178,309,031.93
Finished Water ²	Gal.	30,312,436.00	27,821,676.00	19,605,862.00	29,384,082	28,323,348.90	27,002,300.08	162,449,704.89

1. Water from White Plains Treatment Plant NB: Production data are collected quarterly.

2. Represents Export values

3. Represents quantity sold, not quantity produced

Sources: Lands, Mines & Energy; Commerce & Industry; Forestry Development Authority (FDA);

Liberia Produce Marketing Corporation (LPMC) and Liberia Water & Sewer Corporation (LWSC), Monrovia, Liberia

REAL SECTOR

CENTRAL BANK OF LIBERIA

2.4b: Key Output Value - 2011 (continued)

Liberian dollars

Commodity	Unit	Jul-11	Aug-11	Sep-11	Oct-11	Nov-11	Dec-11	Jul-Dec Total	Grand Total
Agriculture									
Rubber ^{3*}	Mt.	22,167,717.00	2,362,569,402.00	157,407,583.00	2,606,476,023.00	107,693,632.00	1,314,658,280.00	6,570,972,637.00	14,132,401,077.70
Cocoa Beans ⁴	Mt.	184,831,500.00	152,814,825.00	362,922,800.00	194,640,825.00	182,580,000.00	11,031,724,275.00	12,109,514,225.00	14,886,780,338.00
Coffee ⁴	Mt.	na	3,915,540.00	na	na	na	na	na	na
Round Logs ³	M ³	30,890,447	16,837,343	480,269	4,474,359.00	11,080,608.00	4,568,490.00	68,331,516.00	99,759,320.02
Sawn Timber ⁴	Pcs.	1,296,188	937,076	536,794,176	397,305.84	462,822.40	375,474.60	540,263,042.37	549,372,588.37
Fish ⁴	Kg.	-	-	-	-	-	-	-	-
Mining⁴									
Gold	Ounces	84,632,239.00	125,316,738.00	101,456,129.00	40,617,896.00	114,004,594.00	111,919,850.00	577,947,446.00	1,241,701,524.98
Diamond	Carat	121,113,483.00	101,656,244.00	58,956,492.00	73,614,279.00	15,606,057.00	27,872,640.00	398,819,195.00	1,114,328,085.92
Iron Ore	Mt.	-	-	-	222,817,298.00	547,158,608.00	428,241,009.00	1,198,216,915.00	1,198,216,915.00
Manufacturing⁴									
Cement	Mt.	89,827,308.00	115,034,360.00	76,733,341.00	79,644,929.00	122,489,248.00	138,141,838.00	621,871,024.00	966,110,867.28
Spirit	Litre	3,645,100.00	3,699,850.00	3,733,000.00	3,925,950.00	3,672,100.00	4,384,550.00	23,060,550.00	55,073,025.00
Beer	Litre	120,269,310.00	114,823,415.00	85,820,350.00	91,705,850.00	90,237,940.00	130,473,655.00	633,330,520.00	1,269,163,655.00
Stout	Litre	93,904,080.00	93,920,800.00	78,777,040.00	81,020,560.00	96,846,800.00	115,033,600.00	559,502,880.00	1,028,264,800.00
Malta	Litre	-	26,569,485.00	7,390,935.00	4,263,165.00	8,821,305.00	8,665,020.00	55,709,910.00	120,673,755.00
Soft Drink	Litre	55,982,720.00	4,988,360.00	47,782,460.00	58,727,865.00	71,940,975.00	114,346,860.00	353,769,240.00	793,915,120.00
Oil Paint	Gal.	3,445,332.00	1,196,415.00	2,077,346.00	1,709,659.00	3,831,674.00	3,623,833.00	15,884,259.00	32,365,113.00
Water Paint	Gal.	10,693,640.00	9,529,083.00	7,210,162.00	9,278,060.00	11,296,690.00	14,954,751.00	62,962,386.00	113,316,056.80
Varnish	Gal.	861,333.00	299,104.00	519,336.00	427,415.00	957,919.00	905,958.00	3,971,065.00	8,091,277.75
Manoline Hair Grease	Kg.	432,669.60	378,067.14	356,796.00	262,412.70	567,072.00	451,001.10	2,448,018.54	62,192,698.92
Thinner	Gal.	1,141,767.00	685,945.00	392,476.00	1,709,659.00	3,831,674.00	3,623,833.00	11,385,354.00	23,973,780.00
Rubbing Alcohol	Litre	177,365.00	155,897.00	390,097.00	216,870.00	329,360.00	-	1,269,589.00	4,127,346.28
Soap	Kg.	5,734,693.00	3,682,602.00	3,711,147.00	1,645,754.00	2,314,470.00	2,807,068.00	19,895,734.00	42,536,038.01
Chlorox	Litre	1,857,602.00	1,827,252.00	1,772,808.00	1,977,056.00	869,582.00	691,607.00	8,995,907.00	24,595,175.11
Nail	Kg.	-	-	-	-	-	-	-	-
Candle	Kg.	6,923,442.00	6,791,287.00	4,048,013.00	6,988,737.00	6,210,613.00	5,831,005.00	36,793,097.00	85,525,883.06
Mattresses	Pcs.	33,035,646.00	23,710,416.00	31,075,742.00	39,099,391.00	31,228,107.00	49,327,914.00	207,477,216.00	385,786,247.93
Finished Water ²	Gal.	-	-	-	-	-	-	-	162,449,704.89

1. Water from White Plains Treatment Plant.
2. Represents Export values
3. Represents quantity sold, not quantity produced

Sources : Lands, Mines & Energy; Commerce & Industry; Forestry Development Authority (FDA);

Liberia Produce Marketing Corporation (LPMC) and Liberia Water & Sewer Corporation (LWSC), Monrovia, Liberia

REAL SECTOR

CENTRAL BANK OF LIBERIA

2.4c: Key Output Value - 2012

Liberian dollars

Commodity	Unit	Jan-12	Feb-12	Mar-12	Apr-12	May-12	Jun-12	Jan-Jun Total
Agriculture								
Rubber ^{3*}	Mt.	1,065,111,275.00	1,896,180,510.00	61,564,658.00	37,756,280.00	101,535,862.00	2,866,908,433.00	6,029,057,018.00
Cocoa Beans ⁴	Mt.	237,937,960.00	225,828,750.00	177,216,075.00	51,701,266.00	52,491,935.00	28,836,978.00	774,012,964.00
Coffee ⁴	Mt.	-	-	-	1,704,960.00	4,349,611.00	-	6,054,571.00
Round Logs ³	M ³	37,919,136	12,989,519	14,927,001	43,798,978	34,897,865	24,914,487	169,446,986.00
Sawn Timber ⁴	Pcs.	1,090,664	2,314,759	316,229	1,226,294	773,154	627,419	6,348,519.00
Fish ⁴	Kg.	-	-	-	-	-	-	-
Mining⁴								
Gold	Ounces	148,130,831.39	141,694,387.07	147,852,704.67	196,146,216.70	103,992,597.00	210,497,371.65	948,314,108.48
Diamond	Carat	97,685,779.00	91,286,863.00	101,742,265.00	46,508,412.00	123,701,605.00	35,364,662.00	496,289,586.00
Iron Ore	Mt.	434,280,894.00	1,387,589,595.00	1,781,412,055.00	1,591,656,380.00	810,413,148.00	-	6,005,352,072.00
Manufacturing⁴								
Cement	Mt.	129,055,682.75	177,885,699.60	152,273,974.27	167,590,760.00	140,871,834.50	120,224,931.60	887,902,882.72
Spirit	Litre	3,707,600.00	3,635,550.00	3,106,850.00	3,965,500.00	4,210,500.00	4,092,050.00	22,718,050.00
Beer	Litre	86,691,900.00	87,757,855.00	127,923,825.00	100,996,780.00	121,386,860.00	113,017,640.00	637,774,860.00
Stout	Litre	46,382,800.00	68,254,080.00	87,324,000.00	79,233,460.00	95,026,700.00	95,232,540.00	471,453,580.00
Malta	Litre	-	8,923,770.00	15,395,625.00	8,834,840.00	10,232,025.00	8,771,280.00	52,157,540.00
Soft Drink	Litre	81,335,050.00	75,935,665.00	91,342,450.00	76,793,790.00	83,798,530.00	75,549,320.00	484,754,805.00
Oil Paint	Gal.	4,549,624.64	3,205,702.50	3,076,898.00	3,981,274.00	2,727,568.69	1,797,323.22	19,338,391.05
Water Paint	Gal.	13,068,321.34	9,177,173.25	9,257,517.48	12,304,276.00	11,026,391.71	8,164,816.44	62,998,496.22
Varnish	Gal.	1,137,406.16	801,425.63	769,224.50	995,318.50	681,892.17	449,330.81	4,834,597.76
Manoline Hair Grease	Kg.	959,262.60	364,560.00	718,801.65	642,320.00	884,525.79	573,726.30	4,143,196.34
Thinner	Gal.	1,399,699.400	1,188,495.00	708,496.250	1,174,602.00	1,533,073.190	757,817.28	6,762,183.12
Rubbing Alcohol	Litre	110,291.50	201,757.50	206,292.03	203,500.00	402,833.31	530,253.03	1,654,927.37
Soap	Kg.	3,333,264.35	2,791,530.00	2,361,022.35	3,089,278.00	3,225,474.86	2,052,988.35	16,853,557.90
Chlorox	Litre	1,759,741.90	1,872,780.00	1,338,965.90	1,705,145.00	2,054,157.81	2,921,282.88	11,652,073.49
Nail	Kg.	-	-	-	-	-	-	-
Candle	Kg.	6,760,049.00	4,771,620.00	5,604,665.00	5,431,230.00	4,765,251.00	5,258,717.00	32,591,532.00
Mattresses	Pcs.	36,071,804.55	31,976,488.11	35,735,872.90	31,074,957.64	32,458,295.83	27,632,873.44	194,950,292.47
Finished Water ^{2*}	Gal.	7,192,564.00	15,477,653.52	14,160,055.37	12,984,330.08	12,147,596.11	12,264,629.83	74,226,829.00

1. Water from White Plains Treatment Plant.

2. Represents Export values

3. Represents quantity sold, not quantity produced

* Estimates

Sources : Lands, Mines & Energy; Commerce & Industry; Forestry Development Authority (FDA);

Liberia Produce Marketing Corporation (LPMC) and Liberia Water & Sewer Corporation (LWSC), Monrovia, Liberia

REAL SECTOR

CENTRAL BANK OF LIBERIA

2.4c: Key Output Value - 2012 (contd.)

Liberian dollars

Commodity	Unit	Jul-12	Aug-12	Sep-12	Oct-12	Nov-12	Dec-12
Agriculture							
Rubber ^{3*}	Mt.	90,331,605.00	64,355,190.00	1,831,682,439.60	1,277,726,125.20	631,637,244.00	1,655,170,650.00
Cocoa Beans ⁴	Mt.	13,693,680.00	20,983,229.31	17,491,219.20	36,009,534.96	83,385,747.00	87,362,500.00
Coffee ⁴	Mt.	-	-	-	-	-	-
Round Logs ³	M ³	22,769,993	20,492,994.00	18,853,554	30,478,894.00	28,063,713	30,018,406.00
Sawn Timber ⁴	Pcs.	573,415	516,073.00	474,787	508,426.00	592,226	480,488.00
Fish ⁴	Kg.	-	-	-	-	-	-
Mining⁴							
Gold	Ounces	193,541,705.53	102,320,507.68	174,692,606.67	169,783,960.75	139,038,329.00	200,258,741.00
Diamond	Carat	107,334,851.83	50,653,347.01	103,424,184.58	43,386,843.20	53,558,347.00	56,462,473.00
Iron Ore	Mt.	93,243,068,100.00	1,142,396,905.70	272,971,093.20	na	132,920,493.00	145,298,700.00
Manufacturing⁴							
Cement	Mt.	112,479,354.00	92,373,843.42	55,075,637.76	93,578,874.26	122,364,912.00	112,687,040.00
Spirit	Litre	4,103,650.00	3,441,300.00	2,783,050.00	na	2,835,525.00	3,302,075.00
Beer	Litre	128,266,225.00	81,880,230.00	67,607,355.00	82,444,780.00	107,547,790.00	181,586,550.00
Stout	Litre	107,795,420.00	73,511,440.00	84,406,020.00	87,357,500.00	106,733,020.00	154,298,660.00
Malta	Litre	9,800,725.00	7,601,095.00	5,998,475.00	6,832,700.00	8,455,750.00	15,665,270.00
Soft Drink	Litre	65,048,140.00	48,490,570.00	49,521,440.00	58,532,280.00	67,244,840.00	99,538,160.00
Oil Paint	Gal.	3,844,011.60	4,781,626.85	4,025,341.32	4,485,662.94	6,210,971.00	6,312,213.00
Water Paint	Gal.	10,247,125.98	11,507,409.60	9,315,459.97	10,201,080.22	14,991,637.00	14,657,970.00
Varnish	Gal.	961,002.90	1,195,406.71	1,006,335.33	1,121,415.74	1,552,743.00	1,578,053.00
Manoline Hair Grease	Kg.	783,311.10	756,359.08	525,044.000	na	501,704.000	692,230.00
Thinner	Gal.	1,300,899.600	1,489,054.38	727,481.04	1,397,459.58	708,713.00	1,525,618.00
Rubbing Alcohol	Litre	594,096.75	511,343.42	440,616.54	na	57,222.00	1,348,246.00
Soap	Kg.	2,647,689.33	2,808,236.63	4,169,855.04	na	476,128.00	411,438.00
Chlorox	Litre	2,137,785.00	1,896,042.00	2,748,766.80	na	804,432.00	1,348,246.00
Nail	Kg.	-	-	-	-	-	-
Candle	Kg.	8,071,713.00	6,613,512.08	8,448,810.24	na	3,861,040.00	3,132,000.00
Mattresses	Pcs.	25,763,488.88	23,493,971.07	29,416,402.66	28,103,687.52	24,734,017.00	49,275,879.00
Finished Water ^{2*}	Gal.	na	na	12,289,751.76	13,820,819.76	13,478,887.75	15,634,019.00

1. Water from White Plains Treatment Plant.
2. Represents Export values
3. Represents quantity sold, not quantity produced

* Estimates

Sources : Lands, Mines & Energy; Commerce & Industry; Forestry Development Authority (FDA);

Liberia Produce Marketing Corporation (LPMC) and Liberia Water & Sewer Corporation (LWSC), Monrovia, Liberia

REAL SECTOR

CENTRAL BANK OF LIBERIA

2.4c: Key Output Value - 2013

Liberian dollars

Commodity	Unit	Jan-13	Feb-13	Mar-13	Apr-13	May-13	Jun-13
Agriculture							
Rubber ^{3*}	Mt.	82,705,030.40	203,438,640.00	1,775,098,239.00	205,990,352.96	1,638,764,377.77	935,658,561.06
Cocoa Beans ⁴	Mt.	74,363,903.00	34,994,960.00	29,577,029.00	29,189,059.20	127,228,960.47	60,901,974.83
Coffee ⁴	Mt.	-	-	6,420,708.00	4,007,181.02	2,875,150.08	-
Round Logs ³	M ³	-	-	-	-	-	-
Sawn Timber ⁴	Pcs.	1,232,038	681,435.11	681,435.00	1,219,550.08	1,707,195.99	836,107.65
Fish ⁴	Kg.	-	-	-	-	na	na
Mining⁴							
Gold	Ounces	163,927,102.89	169,703,590.23	171,027,811.00	115,000,904.00	142,708,599.09	97,054,161.25
Diamond	Carat	141,762,384.02	72,452,097.81	87,471,229.00	96,510,464.00	191,865,878.60	83,835,910.67
Iron Ore	Mt.	1,450,426,602.00	1,869,203,212.00	1,846,146,058.00	1,955,735,328.00	3,654,870,422.10	1,097,788,727.20
Manufacturing⁴							
Cement	Mt.	115,526,703.36	45,553,770.00	80,729,049.00	167,860,593.00	248,121,443.51	229,220,415.28
Spirit	Litre	2,721,350.00	2,114,025.00	2,135,875.00	2,114,250.00	1,881,250.00	2,404,500.00
Beer	Litre	92,232,780.00	116,695,215.00	126,373,730.00	124,876,860.00	125,590,735.00	101,016,380.00
Stout	Litre	91,817,920.00	103,926,580.00	112,924,090.00	111,905,060.00	114,668,930.00	100,205,220.00
Malta	Litre	8,667,995.00	8,663,200.00	9,765,990.00	9,752,730.00	9,986,990.00	7,902,960.00
Soft Drink	Litre	82,480,120.00	76,013,800.00	86,946,740.00	94,296,300.00	102,943,240.00	78,512,300.00
Oil Paint	Gal.	8,941,486.65	3,835,464.88	6,841,894.00	9,847,949.00	10,325,442.47	7,862,705.45
Water Paint	Gal.	5,957,470.60	3,359,056.00	3,705,965.00	4,033,850.00	5,008,218.60	4,593,088.86
Varnish	Gal.	1,494,694.62	966,525.75	1,228,021.00	1,500,312.00	1,675,469.21	1,385,641.89
Manoline Hair Grease	Kg.	653,437.00	602,780.00	-	-	1,069,105.68	785,376.94
Thinner	Gal.	743,593.84	745,745.00	1,362,829.00	1,706,184.00	1,522,431.90	1,133,251.24
Rubbing Alcohol	Litre	301,077.00	191,540.00	209,531.00	-	363,969.38	378,873.00
Soap	Kg.	17,919,262.00	4,384,474.00	2,037,389.00	-	3,053,561.25	3,596,614.60
Chlorox	Litre	2,277,468.00	1,431,369.00	1,337,908.00	-	1,571,780.48	1,262,182.87
Nail	Kg.	na	na	na	na	na	na
Candle	Kg.	3,848,287.00	2,300,560.00	2,229,040.00	-	2,323,353.60	3,100,788.48
Mattresses	Pcs.	33,223,514.65	27,125,753.96	32,756,933.00	32,639,751.00	30,075,196.72	29,295,179.07
Finished Water ^{2*}	Gal.	16,896,605.76	17,620,218.50	17,071,973.00	16,052,997.00	19,267,134.26	18,104,789.97

1. Water from White Plains Treatment Plant.

2. Represents Export values

3. Represents quantity sold, not quantity produced

* Estimates

Sources : Lands, Mines & Energy; Commerce & Industry; Forestry Development Authority (FDA);

Liberia Produce Marketing Corporation (LPMC) and Liberia Water & Sewer Corporation (LWSC), Monrovia, Liberia

REAL SECTOR

CENTRAL BANK OF LIBERIA

2.4c: Key Output Value - 2013 (continue)

Liberian dollars

Commodity	Unit	Jul-13	Aug-13	Sep-13	Oct-13	Sep-13	Oct-13	Nov-13	Dec-13
Agriculture									
Rubber ²	Mt.	-	1,433,650,347	789,538,536	201,645,762	789,538,536	201,645,762	2,258,983,906	813,465,354
Cocoa Beans ⁴	Mt.	103,729,726	37,344,608	59,059,750	-	59,059,750	136,214,543	113,367,342	45,612,728
Coffee ⁴	Mt.	-	-	1,434,954	-	1,434,954	-	-	-
Round Logs ³	M ³	111,430,438	224,035,463	23,884,850	-	23,884,850	14,856,883	-	204,280,796
Sawn Timber ⁴	Pcs.	152,745,558	96,942,245	111,570,862	-	111,570,862	157,799,568	167,347,721	137,238,659
Fish ⁴	Kg.	na	na	na	na	na	na	na	na
Mining⁴									
Gold	Ounces	150,663,140	150,002,066	93,303,797	163,246,928	93,303,797	163,246,928	77,895,290	90,837,517
Diamond	Carat	95,381,061	103,762,771	62,677,968	118,319,405	62,677,968	118,319,405	99,084,800	176,576,337
Iron Ore	Mt.	2,085,109,824	1,372,966,886	1,402,630,479	3,188,585,365	1,402,630,479	3,188,585,365	2,278,465,508	3,028,617,029
Manufacturing⁴									
Cement	Mt.	268,171,035	213,425,600	182,124,304	203,516,396	182,124,304	203,516,396	310,412,601	320,277,223
Spirit	Litre	2,554,900	2,227,750	1,832,700	-	1,832,700	1,978,500	1,838,300	2,137,350
Beer	Litre	145,881,270	85,302,700	76,096,870	88,470,495	76,096,870	88,470,495	100,628,300	198,123,955
Stout	Litre	135,845,930	85,884,500	80,354,950	91,752,520	80,354,950	91,752,520	99,698,420	188,647,250
Malta	Litre	10,998,065	6,204,575	5,933,850	6,929,455	5,933,850	6,929,455	8,077,550	15,119,715
Soft Drink	Litre	77,184,370	66,801,640	51,386,520	62,495,650	51,386,520	62,495,650	78,681,490	122,351,980
Oil Paint	Gal.	8,608,469	9,820,885	8,447,415	-	8,447,415	12,237,274	11,552,951	27,290,768
Water Paint	Gal.	2,689,047	4,156,661	4,733,961	-	4,733,961	5,386,024	4,051,591	13,816,759
Varnish	Gal.	1,227,566	1,498,464	1,419,185	-	1,419,185	1,776,206	1,502,098	2,014,002
Manoline Hair Grease	Kg.	1,249,374	389,906	913,471	520,482	913,471	520,482	591,964	890,936
Thinner	Gal.	1,247,756	1,520,160	1,385,895	1,110,496	1,385,895	1,110,496	987,875	1,803,161
Rubbing Alcohol	Litre	268,747	295,770	407,040	407,040	407,040	9,132,166	8,904,723	20,782,004
Soap	Kg.	3,457,836	3,848,903	2,274,518	3,479,577	2,274,518	3,479,577	2,158,522	2,350,447
Chlorox	Litre	1,762,863	1,774,974	2,174,610	1,528,252	2,174,610	1,528,252	1,964,008	1,823,754
Nail	Kg.	na	na	4,246,803	3,638,944	na	na	na	na
Candle	Kg.	3,871,494	3,219,866	22,350,261	24,060,492	4,246,803	3,638,944	4,755,146	4,632,443
Mattresses	Pcs.	43,435,124	24,432,821	22,350,261	24,060,492	22,350,261	24,060,492	30,675,421	41,563,362
Finished Water ²	Gal.	30,680,377	31,255,427	26,263,286	-	26,263,286	19,853,043	21,064,859	26,703,458

1. Water from White Plains Treatment Plant.
2. Represents Export values
3. Represents quantity sold, not quantity produced

Sources : Lands, Mines & Energy; Commerce & Industry; Forestry Development Authority (FDA);
Liberia Produce Marketing Corporation (LPMC) and Liberia Water & Sewer Corporation (LWSC), Monrovia, Liberia

GOVERNMENT FINANCE

CENTRAL BANK OF LIBERIA

3.1: Government Revenue 2012 & 2013

Millions of Liberian Dollars

REVENUE SOURCES	2012					
	Jan-Feb	Mar-Apr	May-Jun	Jul-Aug	Sep-Oct	Nov-Dec
A. Tax Revenue	4,603.28	5,229.90	5,596.82	4,641.78	4,596.41	4,263.25
<i>International Trade Taxes</i>	1,782.41	1,836.40	2,187.12	1,929.15	1,803.50	1,763.18
<i>Taxes & Duties on Imports</i>	1,702.98	1,769.00	2,136.89	1,925.29	1,798.44	1,755.10
<i>Taxes on Exports</i>	79.43	67.50	50.23	3.86	5.06	8.08
<i>Taxes on Income & Profits</i>	1,461.14	2,207.80	2,126.38	1,769.45	2,158.18	1,421.04
<i>Individual Taxes on income & profits</i>	683.25	701.50	694.75	1,769.45	-	-
<i>Taxes Payable by Corporate Entities</i>	776.59	1,486.30	1,430.19	-	-	-
<i>Others</i>	1.31	20.00	1.44	-	2,158.18	1,421.04
<i>Sale Taxes on Goods & Services</i>	771.14	818.80	1,017.44	674.83	606.89	1,033.25
<i>Goods & Service Tax</i>	222.38	252.40	304.70	434.92	306.80	312.34
<i>Excise Taxes</i>	143.47	129.90	150.91	25.14	34.13	24.22
<i>Maritime Revenue</i>	100.03	69.20	325.52	214.77	92.39	600.49
<i>Others</i>	305.25	367.20	236.30	-	173.58	96.20
<i>Property & Real Estate Taxes</i>	24.23	27.90	39.18	57.60	22.99	21.82
<i>Other Tax Revenue¹</i>	564.36	339.00	226.71	210.75	4.84	23.97
B. Non-Tax Revenue	2,438.24	304.80	624.40	339.54	879.15	3,317.10
Charges & Other Administrative Fees	495.30	304.80	115.52	79.68	396.96	143.75
Grants	1,942.94	-	115.90	-	-	1,089.00
Others	-	-	392.98	259.87	482.19	-
<i>Contingent Revenue</i>	-	-	-	-	-	2,084.34
<i>Borrowing</i>	-	-	-	-	-	-
<i>Revenue Carry Forward</i>	-	-	-	-	-	-
Grand Total Revenue (A + B)	7,041.52	5,534.70	6,221.22	4,981.32	5,475.56	7,580.35

REVENUE SOURCES	2013					
	Jan-Feb	Mar-Apr	May-Jun	Jul-Aug	Sep-Oct	Nov-Dec
A. Tax Revenue	4,559.38	4,765.09	5,143.71	4,833.33	4,934.67	4,543.91
<i>International Trade Taxes</i>	1,639.00	1,840.82	2,063.35	2,047.34	1,852.38	2,009.43
<i>Taxes & Duties on Imports</i>	1,632.77	1,833.25	2,057.49	2,042.96	1,846.76	2,004.06
<i>Taxes on Exports</i>	6.23	7.57	5.86	4.38	5.62	5.37
<i>Taxes on Income & Profits</i>	2,202.52	2,294.42	2,159.45	2,014.28	2,130.03	1,480.92
<i>Individual Taxes on income & profits</i>	1,694.81	2,292.71	1,743.75	1,469.67	1,865.42	1,364.67
<i>Taxes Payable by Corporate Entities</i>	507.70	-	415.70	519.81	241.26	116.25
<i>Others</i>	-	1.71	-	24.80	23.35	-
<i>Sale Taxes on Goods & Services</i>	670.38	521.70	835.59	737.95	576.42	1,021.89
<i>Goods & Service Tax</i>	22.34	311.93	332.80	411.15	351.21	311.35
<i>Excise Taxes</i>	155.43	66.24	58.43	72.22	50.36	27.47
<i>Maritime Revenue</i>	155.43	143.54	342.36	147.17	99.84	614.04
<i>Others</i>	104.36	293.35	102.00	107.40	75.02	69.03
<i>Property & Real Estate Taxes</i>	47.49	108.15	84.79	33.07	34.83	30.19
<i>Other Tax Revenue¹</i>	-	-	0.53	0.69	341.00	1.47
B. Non-Tax Revenue	1,996	4,382.10	2,726.07	-	1,255.52	3,507.95
Charges & Other Administrative Fees	-	-	2,121.60	550.06	924.05	251.58
Grants	982.13	197.63	456.27	158.77	205.61	2,316.96
Others	1,014.15	4,184.47	148.21	-	125.86	939.40
<i>Contingent Revenue</i>	41.17	3,407.80	-	391.28	-	-
<i>Borrowing</i>	-	-	148.21	-	125.86	-
<i>Revenue Carry Forward</i>	-	-	-	303.34	-	-
Grand Total Revenue (A + B)	6,555.66	9,147.19	7,869.78	5,383.38	6,190.19	8,051.85

Source : Ministry of Finance, Monrovia, Liberia

¹Tax Revenue not elsewhere classified

GOVERNMENT FINANCE

CENTRAL BANK OF LIBERIA

3.2: Government Expenditure 2012 & 2013

Millions of Liberian Dollars

Expenditure By Sectors	2012			2013					
	Fourth Edition	Fifth Edition	Sixth Edition	First Edition	Second Edition	Third Edition	Fourth Edition	Fifth Edition	Sixth Edition
PUBLIC ADMINISTRATIVE SERVICES SECTOR	640.15	1,552.91	3,022.58	1,400.03	2,251.22	2,472.19	1,004.31	1,568.50	2,311.92
MUNICIPAL GOVERNMENT	69.77	85.27	319.56	205.38	340.02	905.10	89.48	152.20	256.23
TRANSPARENCY AND ACCOUNTABILITY	125.05	86.57	294.81	241.32	339.33	243.47	169.68	208.13	473.75
SECURITY AND THE RULE OF LAW	486.94	780.02	986.54	1,110.28	822.56	1,108.66	672.59	1,048.81	995.11
HEALTH	87.59	451.21	815.66	848.53	936.50	867.60	548.14	414.93	583.46
SOCIAL DEVELOPMENT SERVICES	31.65	66.83	114.90	115.89	146.57	141.75	41.38	54.50	114.83
EDUCATION	306.15	1,020.52	977.67	907.34	1,027.73	1,096.36	554.39	861.99	1,054.75
ENERGY AND ENVIRONMENT	46.46	159.09	590.93	145.19	182.22	189.12	66.42	89.39	227.69
AGRICULTURE	15.04	79.11	117.94	74.28	90.27	97.92	63.47	55.12	58.74
INFRASTRUCTURE AND BASIC SERVICES SECTOR	38.66	139.06	299.14	214.89	150.26	165.57	76.40	120.86	284.43
INDUSTRY AND COMMERCE SECTOR	186.26	251.42	238.59	186.55	251.76	401.38	165.51	243.89	238.91
NATIONAL CLAIMS	-	-	-	589.36	1,931.58	1,064.96	114.11	147.64	1,075.34
CENTRAL BANK OF LIBERIA	65.28	64.23	64.14	64.33	67.11	68.20	119.39	91.67	72.00
TOTAL	2,099.00	4,736.23	7,842.44	6,103.37	8,537.14	8,822.28	3,685.24	5,057.64	7,747.16

Source: Ministry of Finance, Monrovia, Liberia

**3.3: Liberia's Overall Debt Position
As At September 30, 2013
(In Millions US\$)**

Creditors	2012	2013		
	30-Sep	30-Jun	30-Sep	30-Dec
Multilateral	143.8	161.6	187.3	215.5
Bilateral	134.5	122.6	122.8	122.4
Commercial Creditors	-	-	-	-
Total External Debt	278.3	284.1	310.0	337.8
Suppliers' Credit (Valid Claims)	1.9	1.9	1.9	1.9
Salary & Allowances	3.7	3.7	-	-
Financial Institutions	275.0	289.5	286.6	285.8
Pre- NTGL Salary Arrears	1.3	1.3	-	-
Others	1.2	-	12.9	12.1
Total Domestic Debt	283.1	296.5	301.3	299.8
Total Public Debt	561.5	580.6	611.4	637.6

Source: Ministry of Finance, Republic of Liberia

EXTERNAL TRADE

CENTRAL BANK OF LIBERIA

4.1: Exports and Imports 2011- 2013

(Millions of United States Dollars)

Period	2011		2012		2013		Balance of Trade		
	Exports	Imports	Exports	Imports	Exports	Imports	2011	2012	2013
Jan	25.2	30.0	41.0	70.0	26.40	171.50	(4.8)	(29.00)	(145.1)
Feb	31.7	53.4	36.1	56.0	39.40	48.70	(21.7)	(19.90)	(9.3)
Mar	13.4	88.3	83.5	70.7	57.90	98.30	(74.9)	12.80	(40.4)
Apr	43.3	73.0	34.6	87.6	36.50	86.30	(29.7)	(53.00)	(49.8)
May	30.9	109.8	24.7	109.0	81.70	89.60	(78.9)	(84.30)	(7.9)
Jun	16.4	91.9	48.0	119.4	42.30	106.10	(75.5)	(71.40)	(63.8)
Jul	36.1	110.9	31.0	30.1	39.10	111.98	(74.8)	0.90	(72.9)
Aug	43.1	97.6	36.8	78.4	42.00	97.50	(54.5)	(41.60)	(55.5)
Sep	10.8	72.1	46.3	93.5	31.13	98.95	(61.3)	(47.20)	(67.8)
Oct	45.8	104.6*	31.1	87.5	50.75	77.21	(58.8)	(56.40)	(26.5)
Nov	32.2	102.5	32.5	86.2	59.57	77.80	(70.3)	(53.70)	(18.2)
Dec	29.0	110.1	13.9	116.3	52.48	85.88	(81.1)	(102.40)	(33.4)
Total	351.9	939.7	459.5	1,004.7	559.2	1,149.8	(686.4)	(545.2)	(590.6)

4.2a: Commodity Composition of Exports-2011

(Thousands of United States Dollars)

Commodity	Jan	Feb	Mar	Apr	May	Jun	Jan-Jun Total
Rubber	14,691.2	26,233.82	855.54	37,812.42	24,436.49	1,042.52	105,071.98
Cocoa beans	1,514.1	692.30	1,862.85	1,712.30	1,512.80	1,100.93	8,395.28
Coffee	0.0	-	-	-	100.00	-	100.00
Round Logs	3,106.0	563.20	5,402.44	843.98	560.21	4,003.06	14,478.89
Iron Ore	0.0	-	450.00	-	-	5,054.45	5,504.45
Gold	1,226.4	1,167.39	1,346.74	1,773.76	1,822.04	1,845.39	9,181.68
Diamond	3,427.1	811.68	1,505.06	197.10	1,483.26	2,457.08	9,881.26
Other Commodities	1,284.8	2,213.79	1,956.73	944.63	1,014.96	933.78	8,348.65
Total	25,249.5	31,682.18	13,379.36	43,284.19	30,929.76	16,437.21	160,962.19

Commodity	Jul	Aug	Sep	Oct	Nov	Dec	Jul-Dec Total	Grand Total
Rubber	30,426.5	32,582.67	2,183.8	36,055.83	1,504.1	18,276.91	121,029.82	226,101.80
Cocoa beans	1,534.4	1,628.60	827.3	825.90	204.0	917.80	5,937.95	14,333.23
Coffee	-	-	-	-	-	-	-	100.00
Round Logs	238.5	1,684.22	2,255.8	239.06	2,420.3	-	6,837.78	21,316.67
Iron Ore	-	0.00	-	3,082.27	7,641.88	5,953.58	16,677.73	22,182.18
Diamond	1,161.89	1,728.27	1,407.55	1,018.32	1,555.96	1,592.24	8,464.23	17,645.91
Gold	1,662.7	1,401.96	817.9	561.87	218.0	387.50	5,049.95	14,931.21
Other Commodities	1,128.7	4,045.29	3,323.7	4,041.85	18,691.7	1,879.94	33,111.11	41,459.76
Total	36,152.6	43,071.0	10,816.0	45,825.1	32,235.9	29,008.0	197,108.57	358,070.76

*Revised

Source: Ministry of Commerce & Industry and Ministry of Lands, Mines and Energy, Monrovia, Liberia

EXTERNAL TRADE

CENTRAL BANK OF LIBERIA

4.2b: Commodity Composition of Exports - 2012-2013

(Thousands of United States Dollars)

Commodity	Jan	Feb	Mar	Apr	May	Jun	Jan-Jun Total
Rubber	18,606.1	6,705.1	35,245.0	510.22	1,355.8	37,952.19	100,374.44
Cocoa beans	1,662.1	112.0	798.4	720.30	108.0	614.07	4,014.90
Coffee	-	-	52.50	30.00	-	-	82.50
Round Logs	4,576.8	3,782.7	852.3	7,482.24	4,508.7	3,854.59	25,057.33
Iron Ore	5,955.6	18,878.8	24,200.7	21,508.87	10,821.4	-	81,365.28
Gold	2,031.4	1,927.8	2,054.7	2,650.62	1,388.6	2,786.57	12,839.67
Diamond	1,339.6	1,242.0	1,382.2	628.49	1,651.8	468.16	6,712.24
Other Commodities	6,744.4	3,283.1	18,927.7	1,104.38	4,909.9	2,329.96	37,299.45
Total	40,915.9	35,931.5	83,513.6	34,635.1	24,744.2	48,005.5	267,745.81

Commodity	Jul	Aug	Sep	Oct	Nov	Dec	Jul-Dec Total	Grand Total
Rubber	1,219.05	875.70	24,982.04	17,731.41	8,742.38	635.99	54,186.57	154,561.01
Cocoa beans	-	81.25	-	776.57	805.33	875.73	2,538.88	6,553.78
Coffee	-	-	-	-	-	-	-	82.50
Round Logs	8,387.94	63.93	752.17	2,194.01	8,751.92	3,150.22	23,300.19	48,357.52
Iron Ore	12,583.41	15,544.93	3,723.01	-	1,839.73	2,004.12	35,695.21	117,060.49
Gold	2,611.90	1,392.31	2,382.61	2,356.15	1,924.41	2,762.19	13,429.55	26,269.22
Diamond	1,448.51	689.25	3,548.35	602.09	741.29	778.79	7,808.30	14,520.54
Other Commodities	4,777.4	18,113.5	10,958.1	7,471.1	9,651.33	3,685.85	54,657.14	91,956.59
Total	31,028.2	36,760.8	46,346.3	31,131.3	32,456.4	13,892.9	191,615.83	459,361.64

4.2c: Commodity Composition of Exports-2013

(Thousands of United States Dollars)

Commodity	Jan	Feb	Mar	Apr	May	Jun	Jan-Jun Total
Rubber	1,118.24	2,730.72	23,826.82	2,745.07	21,668.18	12,224.44	64,313.46
Cocoa beans	274.50	40.00	-	105.00	367.50	736.50	1,523.50
Coffee	-	32.50	32.50	-	-	-	65.00
Round Logs	366.27	250.00	1,626.99	3,097.60	187.20	2,639.16	8,167.22
Iron Ore	19,610.96	25,089.98	24,780.48	26,062.57	48,325.67	14,342.68	158,212.34
Gold	2,216.43	2,277.90	2,295.68	1,532.53	1,886.93	1,268.02	11,477.49
Diamond	1,916.74	972.51	1,174.11	1,286.12	2,536.90	1,095.32	8,981.71
Other Commodities	911.5	11,219.3	4,124.7	1,691.5	6,731.7	10,011.9	34,690.55
Total	26,414.6	42,612.9	57,861.2	36,520.4	81,704.1	42,318.0	287,431.26

4.2c: Commodity Composition of Exports-2013

(Thousands of United States Dollars)

Commodity	Jul	Aug	Sep	Oct	Nov	Dec	Jul-Dec Total	Grand Total
Rubber	-	18,237.51	9,913.84	2,502.74	27,895.58	9,934.85	68,484.51	132,797.97
Cocoa beans	631.25	-	787.00	1,550.00	538.28	451.25	3,957.78	5,481.28
Coffee	-	9.00	-	-	-	-	9.00	74.00
Round Logs	2,214.49	2,583.58	-	530.42	-	13.34	5,341.82	13,509.04
Iron Ore	27,058.26	17,465.55	17,612.14	39,575.34	28,136.15	36,988.48	166,835.92	325,048.26
Gold	1,955.14	1,908.18	1,171.57	2,026.15	961.91	1,109.40	9,132.35	20,609.84
Diamond	1,237.75	1,319.97	787.02	1,468.53	1,223.57	2,156.53	8,193.36	17,175.07
Other Commodities	5,794.54	361.07	756.59	2,898.37	669.98	1,733.67	12,214.22	46,904.76
Total	38,891.4	41,884.8	31,028.2	50,551.5	59,425.5	52,387.5	274,168.96	561,600.22

Source: Ministry of Commerce & Industry and Ministry of Lands, Mines and Energy, Monrovia, Liberia

EXTERNAL TRADE

CENTRAL BANK OF LIBERIA

4.3a: Commodity Composition of Imports - 2011
Thousands of United States Dollars

Commodity	Jan	Feb	Mar	Apr	May	Jun	Total
Food and Live Animals	7,185.99	26,009.04	37,988.98	17,443.76	23,913.05	11,468.15	124,008.97
O/w Commercial Rice	180.22	15,510.49	3,411.43	12,112.84	13,774.77	897.42	45,887.17
O/w Non-Commercial Rice	209.92	1,479.36	2.77	3.18	168.39	858.58	2,722.20
Beverage and Tobacco	854.02	1,893.26	1,443.04	751.94	1,262.57	1,723.57	7,928.40
Crude Materials	458.02	230.49	484.32	310.97	550.12	407.64	2,441.56
Mineral, Fuels, Lubricants	1,497.45	835.60	5,388.30	358.83	27,162.86	494.68	35,737.73
Animal and Vegetable Oil	314.66	710.49	57.78	66.57	530.65	469.76	2,149.91
Chemicals and Related Products	2,207.81	3,255.05	1,102.49	2,303.96	4,807.43	4,198.33	17,875.07
Manufactured Products	5,321.05	5,966.53	6,929.35	10,844.53	8,040.81	5,819.29	42,921.56
Machinery & Transport Equipment	6,911.49	5,931.02	11,318.43	27,850.18	14,425.47	19,919.55	86,356.14
Petroleum Products	2,015.27	6,471.25	16,963.77	11,482.88	26,529.40	38,816.22	102,278.79
Miscellaneous Articles ¹	3,260.92	2,081.35	6,664.52	1,619.32	2,548.17	8,622.09	24,796.38
Total	30,026.68	53,384.08	88,340.99	73,032.95	109,770.53	91,939.28	446,494.50

Commodity	Jul	Aug	Sep	Oct	Nov	Dec	Jul-Dec Total	Grand Total
Food and Live Animals	27,005.41	24,984.34	31,462.00	42,966.26	28,970.89	26,745.82	182,134.72	306,143.69
O/w Commercial Rice	7,969.99	12,218.34	7,330.15	27,746.91	14,245.91	3,187.48	72,698.78	118,585.95
O/w Non-Commercial Rice	-	5.23	-	1.11	469.71	17.05	493.10	3,215.30
Beverage and Tobacco	2,373.99	2,415.04	2,539.57	2,751.71	776.09	1,659.42	12,515.82	20,444.22
Crude Materials	403.08	511.40	934.99	347.07	483.30	306.08	2,985.92	5,427.48
Mineral, Fuels, Lubricants	6,597.11	8,945.42	1,091.51	721.50	2,260.00	6,685.27	26,300.81	62,038.54
Animal and Vegetable Oil	1,322.06	1,320.55	20.99	227.35	673.05	5,801.90	9,365.90	11,515.81
Chemicals and Related Products	2,965.08	3,401.08	4,009.14	3,326.19	1,861.80	2,005.74	17,569.03	35,444.10
Manufactured Products	11,447.14	8,786.35	9,835.74	10,919.25	4,405.53	5,771.09	51,165.10	94,086.66
Machinery & Transport Equipment	31,764.45	29,045.14	6,931.20	28,795.95	29,584.91	38,119.09	164,240.74	250,596.88
Petroleum Products	23,589.03	16,046.61	12,930.03	11,029.09	29,870.51	21,393.46	114,858.73	217,137.52
Miscellaneous Articles ¹	3,479.28	2,128.50	2,300.66	3,464.27	3,652.36	1,627.67	16,652.74	41,449.12
Total	110,946.63	97,584.43	72,055.83	104,548.64	102,538.44	110,115.54	597,789.51	1,044,284.01

Sources: Ministry of Commerce & Industry and Ministry of Finance, Monrovia, Liberia.

EXTERNAL TRADE

CENTRAL BANK OF LIBERIA

4.3b: Commodity Composition of Imports in CIF values - 2012 -2013
Thousands of United States Dollars

Commodity	Jan	Feb	Mar	Apr	May	Jun	Jan-Jun Total
Food and Live Animals	11,161.11	11,322.30	18,199.64	11,465.93	12,349.19	11,183.50	75,681.67
O/w Commercial Rice	8,495.91	1,328.25	5,002.55	2,428.73	8,926.38	275.37	26,457.19
O/w Non-Commercial Rice	10.84	11.15	-	-	-	-	21.99
Beverage and Tobacco	1,067.23	1,699.04	885.52	1,952.21	2,105.47	2,399.31	10,108.78
Crude Materials	454.32	365.41	763.25	192.69	605.24	724.29	3,105.20
Mineral, Fuels, Lubricants	730.14	630.24	2,480.78	2,516.43	1,063.64	7,819.45	15,240.68
Animal and Vegetable Oil	297.67	286.52	621.82	657.27	6,450.13	7,419.08	15,732.49
Chemicals and Related Products	4,431.81	2,199.62	6,855.67	3,563.24	3,965.37	7,420.47	28,436.18
Manufactured Products	7,382.42	6,967.32	8,949.99	7,090.50	19,548.87	20,606.12	70,545.22
Machinery & Transport Equipment	11,422.18	18,065.89	12,513.86	33,374.74	26,170.71	23,775.07	125,322.45
Petroleum Products	30,329.00	12,701.67	15,196.81	24,449.34	33,838.43	33,648.01	150,163.26
Miscellaneous Articles ¹	2,704.22	1,734.71	4,209.71	2,368.59	2,454.16	4,407.72	17,879.11
Total	69,980.10	55,972.72	70,677.05	87,630.95	108,551.21	119,403.02	512,215.04

Commodity	Jul	Aug	Sep	Oct	Nov	Dec	Jul-Dec Total	Grand Total
Food and Live Animals	13,330.45	9,772.43	16,221.14	24,621.95	28,970.89	26,745.82	119,662.68	195,344.35
O/w Commercial Rice	4,796.24	4,437.81	1,438.25	1,932.83	24,871.89	4,515.09	41,992.12	68,449.31
O/w Non-Commercial Rice	0.78	19.91	1.25	165.58	8.06	1.55	197.13	219.12
Beverage and Tobacco	2,228.21	3,726.59	944.98	2,002.58	776.09	1,659.42	11,337.85	21,446.63
Crude Materials	942.01	475.27	346.51	623.06	483.30	306.08	3,176.22	6,281.42
Mineral, Fuels, Lubricants	8,205.64	5,222.49	3,587.81	9,982.23	2,260.00	6,885.27	35,943.45	51,184.13
Animal and Vegetable Oil	60.30	803.99	6,713.79	1,542.71	673.05	5,801.90	15,595.74	31,328.23
Chemicals and Related Products	5,982.63	3,088.59	3,976.71	2,683.59	1,861.80	2,005.74	19,599.06	48,035.24
Manufactured Products	9,858.46	11,106.50	8,460.91	5,259.35	4,405.53	5,771.09	44,861.84	115,407.06
Machinery & Transport Equipment	23,430.80	31,563.02	39,861.89	22,692.10	29,870.51	38,119.09	185,537.40	310,859.85
Petroleum Products	25,570.97	11,124.51	12,023.48	17,226.40	13,293.58	27,530.20	106,769.15	256,932.41
Miscellaneous Articles ¹	1,841.40	1,528.03	1,315.22	916.34	3,652.36	1,627.67	10,881.02	28,760.13
Total	30,133.99	78,411.42	93,452.43	87,550.31	86,247.11	116,252.27	553,364.41	1,065,579.45

4.3c: Commodity Composition of Imports -2013

Commodity	Jan	Feb	Mar	Apr	May	Jun	Jan-Jun Total
Food and Live Animals	14,487.84	6,451.41	12,700.12	7,711.04	24,901.93	24,270.07	90,522.41
O/w Commercial Rice	6,907.09	358.68	6,240.19	631.04	16,420.16	16,961.01	47,518.16
O/w Non-Commercial Rice	5.38	8.52	0.69	3.81	0.51	2.51	21.42
Beverage and Tobacco	6,861.17	7,058.23	9,236.11	9,235.09	7,694.83	8,090.92	48,176.35
Crude Materials	1,620.31	1,181.38	1,343.82	1,265.97	996.14	1,277.45	7,685.07
Mineral, Fuels, Lubricants	42,767.06	14,730.91	22,261.72	29,120.83	18,442.69	24,700.85	152,024.06
O/W Petroleum Products	34,503.34	13,555.71	20,617.46	23,494.89	17,518.93	23,408.38	133,098.70
Animal and Vegetable Oil	2,067.83	2,256.03	4,844.97	1,621.03	1,060.51	6,623.92	18,474.29
Chemicals and Related Products	4,248.51	5,044.36	7,316.63	8,164.15	7,563.38	6,186.51	38,523.54
Manufactured Products	26,433.79	9,467.37	12,902.58	9,585.83	8,977.33	11,004.14	78,371.04
Machinery & Transport Equipment	26,015.25	46,633.66	25,648.90	17,612.67	17,905.50	21,661.99	155,477.98
Miscellaneous Articles ¹	1,869.33	2,005.09	2,082.88	2,004.99	2,022.64	2,261.56	12,246.49
Total	126,371.09	94,828.44	98,337.73	86,321.60	89,564.95	106,077.42	601,501.23

4.3c: Commodity Composition of Imports -2013

Commodity	Jul	Aug	Sep	Oct	*Nov	*Dec	Jul-Dec Total	Grand Total
Food and Live Animals	12,457.09	21,164.86	17,581.70	10,743.87	18,920.97	5,653.37	86,521.86	177,044.27
O/w Commercial Rice	4,869.27	10,960.10	6,525.88	4,736.40	10,526.39	598.43	38,216.47	85,734.63
O/w Non-Commercial Rice	-	0.11	-	6.40	-	-	6.51	27.92
Beverage and Tobacco	9,062.10	8,210.06	8,507.26	7,813.84	7,951.11	6,225.00	47,769.38	95,945.73
Crude Materials	1,601.64	1,999.23	1,613.75	1,504.73	1,355.26	1,022.57	9,097.17	16,782.24
Mineral, Fuels, Lubricants	32,262.31	20,996.60	26,996.84	25,233.68	12,898.44	34,365.98	152,753.85	304,777.91
O/W Petroleum Products	28,049.82	15,149.84	22,438.39	22,592.71	8,208.00	33,437.40	129,876.17	262,974.88
Animal and Vegetable Oil	1,713.38	821.06	577.02	375.14	1,316.87	7,151.22	11,954.70	30,428.98
Chemicals and Related Products	8,800.41	7,747.91	6,890.54	4,733.79	6,273.87	3,807.18	38,253.70	76,777.24
Manufactured Products	15,320.29	13,331.43	12,557.04	7,270.19	7,991.49	11,632.20	68,102.64	146,473.68
Machinery & Transport Equipment	28,741.44	19,906.37	21,859.13	16,730.03	18,726.98	14,504.48	120,468.44	275,946.41
Miscellaneous Articles ¹	2,025.16	3,312.60	2,368.88	2,808.86	2,367.00	1,513.64	14,396.14	26,642.63
Total	111,983.81	97,490.11	98,952.17	77,214.14	77,801.98	85,875.65	679,194.04	1,280,695.27

Sources: Ministry of Commerce & Industry and Ministry of Finance, Monrovia, Liberia.

*Provisional

EXTERNAL TRADE

CENTRAL BANK OF LIBERIA

4.4: Volume of Imports of Petroleum Products-2011- 2013

(Volume in gals.)

2011	Premium	Diesel	Kerosene	Jet fuel	Total
Jan	-	738,076	-	-	738,076
Feb	1,480,000	-	-	-	1,480,000
Mar	2,670,593	3,168,005	-	1,097,681.22	6,936,279
Apr	4,182,856.29	-	-	-	4,182,856.29
May	4,709,021.08	5,578,676.11	-	1,294,841.64	11,582,538.83
June	7,978,638.56	4,645,656.73	-	727,492.52	13,351,787.81
Jul	2,669,547.41	5,430,753.81	-	-	8,100,301.22
Aug	1,681,442.80	3,705,720.20	-	435,926.60	5,823,089.60
Sep	-	4,267,713.20	-	405,520.00	4,673,233.20
Oct	2,093,830.00	603,793,751.84	-	138,857,417.60	744,744,999.44
Nov	5,253,796.50	5,055,657.80	-	398,334.60	10,707,788.90
Dec	1,280,967.38	24,809,573.00	-	797,453.60	26,887,993.98
Total	34,000,693	661,193,583	0	144,014,668	839,208,944
2012	Premium	Diesel	Kerosene	Jet fuel	Total
Jan	4,197,923.80	5,832,689.93	-	-	10,030,614
Feb	2,873,980.92	623,194.65	-	811,920.60	4,309,096
Mar	-	4,141,208.96	-	4,225,444.40	8,366,653
Apr	2,608,858.90	4,671,053.51	-	-	7,279,912
May	6,437,519.00	3,249,521.32	-	413,767.30	10,100,808
Jun	3,678,517.80	5,827,876.17	-	1,151,932.10	10,658,326
Jul	3,930,384.20	5,907,152.78	-	371,036.00	10,208,573
Aug	2,174,860.00	7,651,975.00	-	602,744.80	10,429,580
Sep	-	3,675,066.30	-	409,094.20	4,084,161
Oct	2,606,250.40	2,567,766.42	-	-	5,174,017
Nov	2,236,609.30	1,531,583.09	-	406,215.60	4,174,407.99
Dec	2,051,716.60	6,346,696.96	-	-	8,398,413.56
Total	32,796,620.92	52,025,785.09	-	8,392,155.00	93,214,561.01
2013	Premium	Diesel	Kerosene	Jet fuel	Total
Jan	5,385,995.65	4,909,317.13	-	882,710.48	11,178,023.26
Feb	3,662,598.55	772,996.30	-	-	4,435,594.85
Mar	3,710,678.20	2,338,718.33	-	444,514.30	6,493,910.83
Apr	2,063,536.62	4,991,336.17	-	-	7,054,872.79
May	1,700,309.84	3,678,388.65	-	441,522.11	5,820,220.60
Jun	5,297,704.40	2,286,295.01	-	437,941.25	8,021,940.66
Jul	5,863,373.72	3,155,371.79	-	364,291.27	9,383,036.78
Aug	910,188.90	3,670,850.88	-	463,182.28	5,044,222.06
Sep	3,013,907.15	3,245,843.35	-	372,103.08	6,631,853.58
Oct	1,284,931.19	5,023,796.20	-	447,901.28	6,756,628.67
*Nov	1,661,591.56	920,331.35	-	-	2,581,922.91
*Dec	6,651,682.40	3,809,888.11	-	1,044,540.34	11,506,110.85
Total	41,206,498.18	38,803,133.28	-	4,898,706.39	84,908,337.85

Source: Ministry of Commerce & Industry and Central Bank of Liberia

*Provisional