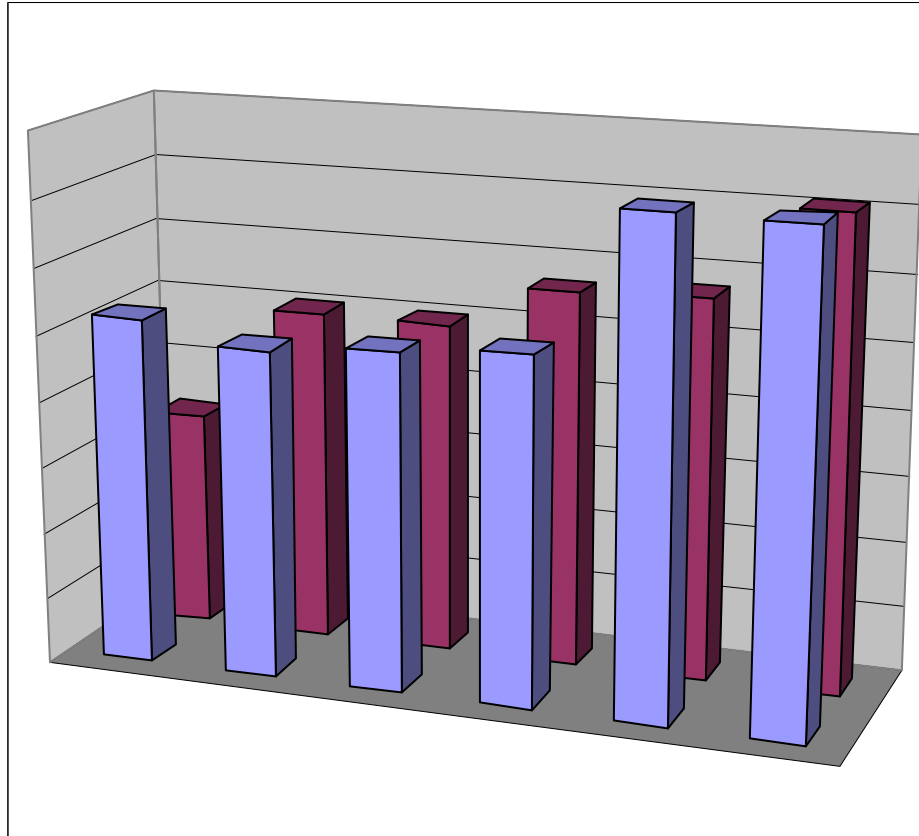




## ***CENTRAL BANK OF LIBERIA***



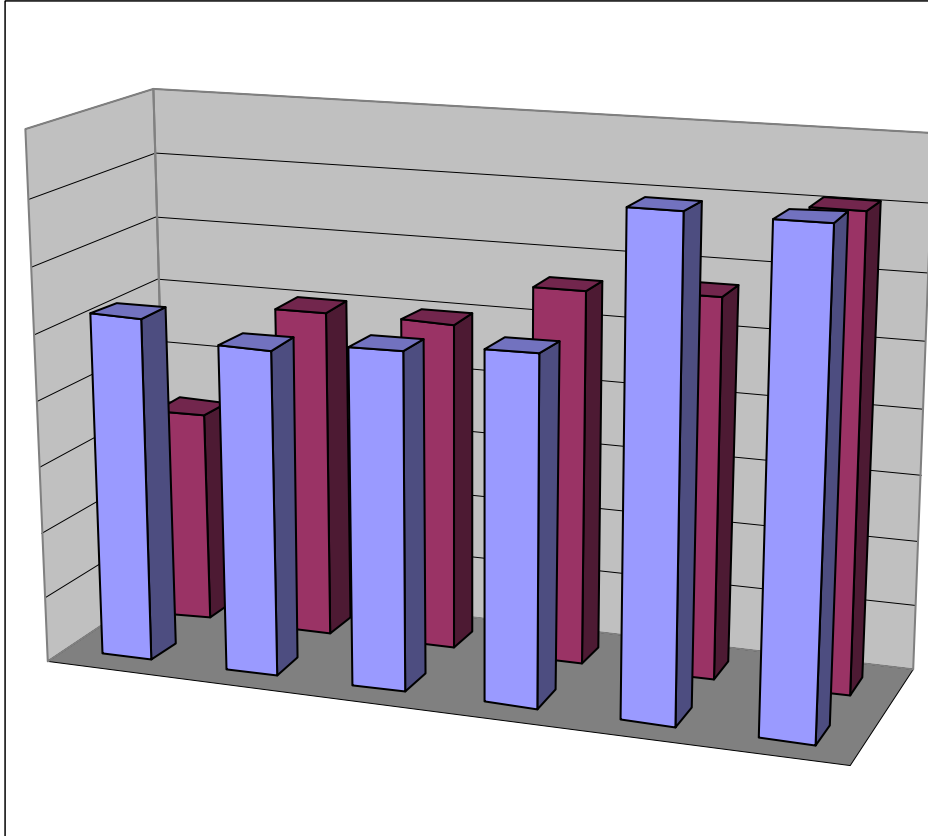
# **Liberia Financial STATISTICS**

**Vol. 10, No.3  
May - June, 2008**

Research, Policy and Planning Department  
Monrovia, Liberia



# ***CENTRAL BANK OF LIBERIA***



# **Liberia Financial STATISTICS**

---

THE LIBERIA FINANCIAL STATISTICS is produced by the Bank's Research, Policy and Planning Department. Inquiries concerning this publication should be addressed to:

The Director  
Research, Policy and Planning Department  
Central Bank of Liberia  
Warren and Carey Streets  
P. O. Box 2048  
Monrovia, Liberia

Telephone #s: 00(231) 6515440/6516418/6553456

Fax #s: 00(231) 077059642

Telex #:99744215

Swift :CBLRLRLM

---

# Table of Contents

<b>INTRODUCTION</b>		<b>-ii-</b>
	<i>Statistics</i>	<b>1 - 51</b>
<b>1</b>	<b>MONEY AND BANKING</b>	<b>1 - 28</b>
1.1a	Depository Corporations Survey – 2006	1 - 2
1.1b	Depository Corporations Survey – 2007	3 - 4
1.1c	Depository Corporations Survey – 2008	5
1.2a	Sectoral Balance Sheet of Other Depository Corp. – 2006	6 - 7
1.2b	Sectoral Balance Sheet of Other Depository Corp. – 2007	8 - 9
1.2c	Sectoral Balance Sheet of Other Depository Corp. – 2008	10
1.3a	Sectoral Balance Sheet of Central Bank of Liberia – 2006	11 - 12
1.3b	Sectoral Balance Sheet of Central Bank of Liberia – 2007	13 - 14
1.3c	Sectoral Balance Sheet of Central Bank of Liberia – 2008	15
1.4a	Commercial Banks’ Loans by Economic Sectors – 2006	16 - 17
1.4b	Commercial Banks’ Loans by Economic Sectors – 2007	18 - 19
1.4c	Commercial Banks’ Loans by Economic Sectors – 2008	20
1.5	Commercial Banks’ Interest Rate - 2006 – 2008	21
1.6	Liberian Dollar Exchange Rates - Period Averages – 2006-2008	22 - 23
1.7	Liberian Dollar Exchange Rates - End of Period – 2006 – 2008	23
1.8	Liberian Dollar Exchange Rates - May-Jun, 2008	24
1.9	Commercial Banks’ Inflows and Outflows - 2006 – 2008	25
1.10a	Central Bank of Liberia FX Auction - 2006	26
1.10b	Central Bank of Liberia FX Auction - 2007	27
1.10c	Central Bank of Liberia FX Auction - 2008	28
<b>2</b>	<b>REAL SECTOR</b>	<b>29 - 44</b>
2.1a	Harmonized Consumer Price Index – 2006	29
2.1b	Harmonized Consumer Price Index – 2007	30
2.1c	Harmonized Consumer Price Index – 2008	31
2.2a	MCPI Inflation Rates – 2006	32
2.2b	HCPI Inflation Rates – 2007	33
2.2c	HCPI Inflation Rates – 2008	34
2.3a	Key Output Volume – 2006	35 - 36
2.3b	Key Output Volume – 2007	37 - 38
2.3c	Key Output Volume – 2008	39
2.4a	Key Output Value – 2006	40 - 41
2.4b	Key Output Value – 2007	42 - 43
2.4c	Key Output Value – 2008	44
<b>3</b>	<b>GOVERNMENT FINANCE</b>	<b>45 - 46</b>
3.1	Government Revenue – 2006 – 2008	45
3.2	Government Expenditure – 2006 – 2008	45
3.3	Functional Classification of Government Expenditure – 2006 – 2008	46
3.4	Provisional Summary Estimates of Liberia’s Public Debt Stock and Status as at June 30, 2008	46
<b>4</b>	<b>EXTERNAL TRADE</b>	<b>47 - 51</b>
4.1	Exports and Imports – 2006 – 2008	47
4.2a	Commodity Composition of Exports – 2006	47
4.2b	Commodity Composition of Exports – 2007	48
4.2c	Commodity Composition of Exports – 2008	48
4.3a	Commodity Composition of Imports – 2006	49
4.3b	Commodity Composition of Imports – 2007	50
4.3c	Commodity Composition of Imports – 2008	50
4.4a	Volume of Imports of Petroleum Products – 2006	51
4.4b	Volume of Imports of Petroleum Products – 2007	51
4.4c	Volume of Imports of Petroleum Products – 2008	51

# **Introduction**

**T**he Liberia Financial Statistics (LFS) remains one of the leading statistical publications of macroeconomic data on the Liberian economy. It contains statistical information on some of the major sectors of the economy including monetary, real, fiscal and external. This edition is the third for the year 2008 and it provides information spanning two and a half years, from January, 2006 to June, 2008.

The cover of this edition depicts quarterly movements in government revenue and expenditure from first quarter, 2007 to second quarter, 2008.

The Management of the Central Bank of Liberia expresses thanks and appreciation to the many data providers whose collaboration and cooperation have culminated into the smooth and timely production of this document. It is hoped that this good working relationship will continue in the future.

**MONEY AND BANKING**

CENTRAL BANK OF LIBERIA

**1.1a: Depository Corporations Survey-2006**

Millions of Liberian Dollars

	<b>Jan-06</b>	<b>Feb-06</b>	<b>Mar-06</b>	<b>Apr-06</b>	<b>May-06</b>	<b>Jun-06</b>
<b>Foreign Assets (net)</b>	<b>(49,076.4)</b>	<b>(48,404.4)</b>	<b>(48,792.7)</b>	<b>(46,834.2)</b>	<b>(46,743.7)</b>	<b>(46,619.8)</b>
Foreign Assets (MA)	1,855.7	2,244.2	2,248.5	2,625.9	2,860.1	2,982.7
(-) Foreign Liabilities (MA)	51,847.2	51,986.5	52,065.3	50,594.3	50,679.3	50,774.1
Foreign Assets (CoB)	2,373.9	3,019.5	2,720.4	2,707.8	2,443.7	2,725.9
(-) Foreign Liabilities (CoB)	1,458.9	1,681.5	1,696.2	1,573.6	1,368.2	1,554.3
<b>Domestic Credit</b>	<b>68,830.2</b>	<b>68,616.7</b>	<b>68,608.9</b>	<b>67,292.9</b>	<b>67,320.2</b>	<b>68,058.6</b>
Claims on General Government (net)	66,616.2	66,238.9	66,073.1	64,509.8	64,591.3	65,188.4
Claims on General Government (MA)	66,336.1	66,318.1	66,427.9	65,166.3	65,400.3	65,887.1
(-) General Government Deposits (MA)	342.6	652.7	946.5	1,257.0	1,408.2	1,319.3
Claims on General Government (CoB)	794.5	772.7	782.4	781.1	787.9	810.4
(-) General Government Deposits (CoB)	171.8	199.3	190.8	180.6	188.7	189.8
Claims on Public Corporations (MA)	0.6	0.6	0.6	0.6	0.6	0.6
Claims on Public Corporations (CoB)	60.1	87.2	123.0	110.0	134.8	209.3
Claims on Private Sector (MA)	172.0	222.0	222.7	224.1	225.5	204.0
Claims on Private Sector (CoB)	1,884.3	1,972.4	2,100.0	2,364.6	2,270.1	2,368.3
Claims on NBFIs (MA)	0.0	0.0	0.0	0.0	0.0	0.0
Claims on NBFIs (CoB)	97.0	95.7	89.6	83.8	97.9	87.9
<b>Money</b>	<b>6,345.8</b>	<b>6,703.4</b>	<b>6,415.4</b>	<b>6,635.0</b>	<b>6,522.7</b>	<b>6,912.7</b>
Currency Outside Banks (MA)	2,122.6	2,070.1	2,069.6	2,105.8	2,112.6	2,105.8
Liberian Currency in Circulation (MA)	2,374.6	2,346.1	2,334.0	2,356.4	2,346.3	2,367.1
(-) Currency Holdings (CoB)	252.0	276.0	264.5	250.6	233.6	261.3
<b>Demand Deposits</b>	<b>2,797.8</b>	<b>3,204.7</b>	<b>2,884.4</b>	<b>2,989.9</b>	<b>2,853.1</b>	<b>3,139.7</b>
Demand Deposits (MA)	11.2	13.8	15.5	14.5	15.8	20.1
Demand Deposits (CoB)	2,786.6	3,190.9	2,868.9	2,975.4	2,837.2	3,119.7
<b>Other Deposits</b>	<b>1,425.4</b>	<b>1,428.6</b>	<b>1,461.4</b>	<b>1,539.3</b>	<b>1,557.0</b>	<b>1,667.1</b>
Other Deposits (MA)	16.0	15.8	15.8	18.9	19.0	19.4
Time and Savings Deposits (CoB)	1,409.4	1,412.8	1,445.6	1,520.4	1,538.0	1,647.7
<b>Bonds and Securities (CoB)</b>	<b>0.0</b>	<b>0.0</b>	<b>0.0</b>	<b>0.0</b>	<b>0.0</b>	<b>0.0</b>
<b>Restricted Deposits</b>	<b>464.6</b>	<b>466.2</b>	<b>466.2</b>	<b>471.2</b>	<b>474.4</b>	<b>484.3</b>
<b>Capital Accounts</b>	<b>14,309.9</b>	<b>14,200.6</b>	<b>14,036.7</b>	<b>14,200.7</b>	<b>14,343.0</b>	<b>14,870.5</b>
Capital Accounts (MA)	12,686.8	12,588.7	12,604.9	12,711.8	12,840.8	13,199.2
Capital Accounts (CoB)	1,623.1	1,611.8	1,431.9	1,488.9	1,502.2	1,671.3
<b>Other Items (net)</b>	<b>(1,366.5)</b>	<b>(1,157.8)</b>	<b>(1,102.2)</b>	<b>(848.2)</b>	<b>(763.7)</b>	<b>(828.7)</b>
Unclassified Liabilities (MA)	8,345.7	8,323.1	8,337.7	8,190.8	8,226.3	8,297.2
(-) Unclassified Assets (MA)	8,752.7	8,736.8	8,731.7	8,478.2	8,468.2	8,469.7
(-) Unclassified Assets (CoB)	729.1	959.3	761.2	900.6	691.1	669.2
Unclassified Liabilities (CoB)	794.1	868.4	946.6	1,421.1	1,238.8	1,054.8
Commercial Banks' Deposits (MA)	1,613.2	1,721.7	1,424.2	1,527.6	1,561.6	1,622.9
(-) Reserves (CoB)	2,076.3	1,827.2	1,879.1	1,964.1	1,993.6	2,103.2
Currency Holdings (CoB)	252.0	276.0	264.5	250.6	233.6	261.3
Liabilities to Central Bank (CoB)	67.4	67.1	173.4	54.6	52.1	52.4
(-) Claims on Domestic Banks (MA)	144.3	146.4	131.6	198.4	162.8	99.2
(-) Claims on Central Bank of Liberia (CoB)	741.9	745.2	745.2	755.0	761.6	781.3
(-) Unbalanced Items	5.4	0.9	0.2	3.4	1.2	5.2
<b>Vertical Check</b>	<b>(0.0)</b>	<b>0.0</b>	<b>0.0</b>	<b>0.0</b>	<b>0.0</b>	<b>(0.0)</b>

NBFIs: Non-Bank Financial Institutions

Source: Central Bank of Liberia, Monrovia, Liberia.

**MONEY AND BANKING**

CENTRAL BANK OF LIBERIA

**1.1a: Depository Corporations Survey-2006-continued**

Millions of Liberian Dollars

	Jul-06	Aug-06	Sep-06	Oct-06	Nov-06	Dec-06
<b>Foreign Assets (net)</b>	<b>(46,251.7)</b>	<b>(45,700.7)</b>	<b>(45,876.8)</b>	<b>(46,015.5)</b>	<b>(46,263.6)</b>	<b>(45,248.2)</b>
Foreign Assets (MA)	2,979.5	3,856.3	3,697.9	3,766.0	3,997.4	4,280.6
(-) Foreign Liabilities (MA)	50,944.8	50,947.6	51,019.8	51,068.4	51,141.2	51,330.0
Foreign Assets (CoB)	3,197.2	2,924.9	2,744.7	2,687.1	2,378.8	3,122.4
(-) Foreign Liabilities (CoB)	1,483.6	1,534.3	1,299.6	1,400.2	1,498.6	1,321.1
<b>Domestic Credit</b>	<b>68,262.4</b>	<b>68,107.1</b>	<b>67,986.3</b>	<b>68,337.4</b>	<b>68,062.2</b>	<b>68,706.3</b>
Claims on General Government (net)	65,388.2	65,226.3	64,936.3	65,011.0	64,547.2	65,390.1
Claims on General Government (MA)	66,091.5	66,367.5	66,232.1	66,357.3	65,852.5	66,598.8
(-) General Government Deposits (MA)	1,314.0	1,750.5	1,906.6	1,977.1	1,884.5	1,773.9
Claims on General Government (CoB)	794.4	829.0	819.8	819.5	793.6	822.9
(-) General Government Deposits (CoB)	183.7	219.7	209.0	188.7	214.3	257.6
Claims on Public Corporations (MA)	0.6	0.6	0.6	0.6	0.6	0.6
Claims on Public Corporations (CoB)	255.7	209.3	190.8	194.7	152.8	146.0
Claims on Private Sector (MA)	203.9	205.4	252.3	246.7	210.0	220.5
Claims on Private Sector (CoB)	2,325.2	2,375.0	2,517.3	2,791.4	3,061.7	2,859.2
Claims on NBFIs (MA)	0.0	0.0	0.0	0.0	0.0	0.0
Claims on NBFIs (CoB)	88.9	90.4	89.1	93.0	89.9	89.9
<b>Money</b>	<b>7,370.4</b>	<b>7,435.7</b>	<b>7,369.8</b>	<b>7,731.3</b>	<b>8,240.3</b>	<b>8,605.6</b>
Currency Outside Banks (MA)	2,121.1	2,069.1	2,113.2	2,222.6	2,347.9	2,647.6
Liberian Currency in Circulation (MA)	2,386.8	2,385.6	2,372.7	2,424.0	2,483.4	2,813.9
(-) Currency Holdings (CoB)	265.8	316.5	259.5	201.4	135.5	166.3
<b>Demand Deposits</b>	<b>3,527.4</b>	<b>3,618.5</b>	<b>3,494.7</b>	<b>3,647.5</b>	<b>4,041.2</b>	<b>4,010.6</b>
Demand Deposits (MA)	32.6	42.0	49.2	54.2	59.1	37.4
Demand Deposits (CoB)	3,494.8	3,576.5	3,445.5	3,593.3	3,982.1	3,973.2
<b>Other Deposits</b>	<b>1,721.9</b>	<b>1,748.1</b>	<b>1,761.9</b>	<b>1,861.2</b>	<b>1,851.2</b>	<b>1,947.4</b>
Other Deposits (MA)	19.4	19.7	19.4	19.4	18.8	19.4
Time and Savings Deposits (CoB)	1,702.5	1,728.4	1,742.5	1,841.8	1,832.5	1,928.0
<b>Bonds and Securities (CoB)</b>	<b>0.0</b>	<b>0.0</b>	<b>0.0</b>	<b>0.0</b>	<b>0.0</b>	<b>0.0</b>
<b>Restricted Deposits</b>	<b>484.3</b>	<b>490.9</b>	<b>484.3</b>	<b>484.3</b>	<b>467.9</b>	<b>484.3</b>
<b>Capital Accounts</b>	<b>14,866.6</b>	<b>15,413.6</b>	<b>14,941.7</b>	<b>14,962.5</b>	<b>14,331.4</b>	<b>14,924.1</b>
Capital Accounts (MA)	13,188.7	13,427.1	13,187.4	13,298.0	12,537.0	13,058.8
Capital Accounts (CoB)	1,677.9	1,986.6	1,754.3	1,664.5	1,794.4	1,865.3
<b>Other Items (net)</b>	<b>(710.6)</b>	<b>(933.8)</b>	<b>(686.3)</b>	<b>(856.3)</b>	<b>(1,241.0)</b>	<b>(555.8)</b>
Unclassified Liabilities (MA)	8,313.5	8,641.0	8,346.5	8,362.9	8,380.2	8,457.1
(-) Unclassified Assets (MA)	8,469.4	8,470.6	8,460.4	8,465.9	8,377.8	8,353.5
(-) Unclassified Assets (CoB)	689.1	734.1	784.9	784.2	772.6	776.5
Unclassified Liabilities (CoB)	1,273.7	947.9	1,229.7	1,252.3	1,231.3	1,174.2
Commercial Banks' Deposits (MA)	1,653.0	1,741.7	1,806.5	1,693.3	1,991.7	1,987.3
(-) Reserves (CoB)	2,188.0	2,560.7	2,243.2	2,279.9	3,051.1	2,398.4
Currency Holdings (CoB)	265.8	316.5	259.5	201.4	135.5	166.3
Liabilities to Central Bank (CoB)	38.1	52.5	24.9	24.9	46.8	11.6
(-) Claims on Domestic Banks (MA)	121.0	63.0	70.2	61.3	54.0	46.5
(-) Claims on Central Bank of Liberia (CoB)	781.3	794.4	781.3	781.3	748.5	781.3
(-) Unbalanced Items	(5.9)	(10.7)	(13.3)	(18.5)	(22.5)	3.9
<b>Vertical Check</b>	<b>0.0</b>	<b>(0.0)</b>	<b>0.0</b>	<b>(0.0)</b>	<b>(0.0)</b>	<b>0.0</b>

NBFIs: Non-Bank Financial Institutions

Source: Central Bank of Liberia, Monrovia, Liberia.

**1.1b: Depository Corporations Survey-2007***Millions of Liberian Dollars*

	Jan-07	Feb-07	Mar-07	Apr-07	May-07	Jun-07
<b>Foreign Assets (net)</b>	<b>(44,668.1)</b>	<b>(44,318.1)</b>	<b>(43,875.6)</b>	<b>(48,938.9)</b>	<b>(48,549.6)</b>	<b>(48,559.4)</b>
Foreign Assets (MA)	5,020.9	5,070.5	5,576.2	6,128.5	6,545.7	6,163.8
(-) Foreign Liabilities (MA)	51,429.9	51,506.1	51,549.0	57,178.3	57,290.5	57,389.2
Foreign Assets (CoB)	2,975.3	3,223.5	3,013.5	3,630.0	3,027.5	3,594.5
(-) Foreign Liabilities (CoB)	1,234.4	1,106.0	916.3	1,519.0	832.3	928.6
<b>Domestic Credit</b>	<b>68,641.1</b>	<b>68,391.3</b>	<b>68,266.7</b>	<b>73,616.0</b>	<b>74,547.9</b>	<b>74,875.1</b>
Claims on General Government (net)	65,635.7	65,402.0	65,144.1	70,437.9	71,239.6	71,581.4
Claims on General Government (MA)	67,153.6	67,072.8	67,203.4	72,867.9	73,503.5	73,631.2
(-) General Government Deposits (MA)	2,285.4	2,396.7	2,808.7	3,205.0	3,067.9	2,802.3
Claims on General Government (CoB)	841.7	833.8	830.8	850.0	869.3	868.9
(-) General Government Deposits (CoB)	74.2	107.9	81.4	74.9	65.4	116.4
Claims on Public Corporations (MA)	0.6	0.6	0.6	0.6	0.6	0.6
Claims on Public Corporations (CoB)	94.2	65.1	151.5	163.3	121.1	135.2
Claims on Private Sector (MA)	144.2	121.1	121.3	120.7	50.6	49.7
Claims on Private Sector (CoB)	2,761.4	2,794.2	2,842.4	2,874.4	3,132.2	3,099.6
Claims on NBFIs (MA)	0.0	0.0	0.0	0.0	0.0	0.0
Claims on NBFIs (CoB)	5.1	8.4	6.8	19.1	3.8	8.7
<b>Money</b>	<b>8,897.3</b>	<b>9,440.1</b>	<b>9,472.5</b>	<b>9,589.0</b>	<b>10,005.3</b>	<b>10,422.6</b>
Currency Outside Banks (MA)	2,560.1	2,538.2	2,544.0	2,547.6	2,567.1	2,476.8
Liberian Currency in Circulation (MA)	2,793.4	2,792.0	2,814.6	2,819.5	2,862.6	2,830.1
(-) Currency Holdings (CoB)	233.3	253.8	270.5	271.9	295.5	353.3
<b>Demand Deposits</b>	<b>4,292.5</b>	<b>4,820.8</b>	<b>4,881.4</b>	<b>4,843.7</b>	<b>5,036.1</b>	<b>5,435.9</b>
Demand Deposits (MA)	45.1	45.7	40.7	41.5	104.3	404.8
Demand Deposits (CoB)	4,247.5	4,775.0	4,840.8	4,802.2	4,931.8	5,031.1
<b>Other Deposits</b>	<b>2,044.7</b>	<b>2,081.1</b>	<b>2,047.1</b>	<b>2,197.6</b>	<b>2,402.1</b>	<b>2,510.0</b>
Other Deposits (MA)	19.9	19.7	19.7	19.7	20.3	20.3
Time and Savings Deposits (CoB)	2,024.8	2,061.4	2,027.4	2,177.9	2,381.8	2,489.7
<b>Bonds and Securities (CoB)</b>	<b>0.0</b>	<b>0.0</b>	<b>0.0</b>	<b>0.0</b>	<b>0.0</b>	<b>0.0</b>
<b>Restricted Deposits</b>	<b>48.9</b>	<b>48.9</b>	<b>48.8</b>	<b>48.8</b>	<b>48.8</b>	<b>48.7</b>
<b>Capital Accounts</b>	<b>15,712.9</b>	<b>15,540.1</b>	<b>15,738.4</b>	<b>16,075.0</b>	<b>16,647.1</b>	<b>16,726.4</b>
Capital Accounts (MA)	13,550.2	13,405.0	13,334.3	13,569.8	14,062.7	14,150.1
Capital Accounts (CoB)	2,162.7	2,135.1	2,404.1	2,505.1	2,584.4	2,576.3
<b>Other Items (net)</b>	<b>(686.1)</b>	<b>(955.9)</b>	<b>(868.6)</b>	<b>(1,034.6)</b>	<b>(702.9)</b>	<b>(882.0)</b>
Unclassified Liabilities (MA)	8,537.8	8,521.8	8,531.3	9,448.6	9,297.0	9,270.6
(-) Unclassified Assets (MA)	8,454.6	8,480.1	8,320.7	9,174.4	9,238.6	9,258.3
(-) Unclassified Assets (CoB)	963.9	1,256.5	1,011.8	1,373.7	1,227.0	1,238.4
Unclassified Liabilities (CoB)	1,145.7	1,172.6	1,060.5	1,259.0	1,383.5	1,412.5
Commercial Banks' Deposits (MA)	2,162.3	2,095.1	2,399.4	2,084.2	2,702.8	2,447.1
(-) Reserves (CoB)	2,458.4	2,396.2	2,696.4	2,647.6	2,994.5	2,843.3
Currency Holdings (CoB)	233.3	253.8	270.5	271.9	295.5	353.3
Liabilities to Central Bank (CoB)	1.0	0.0	3.4	0.0	2.7	0.0
(-) Claims on Domestic Banks (MA)	62.8	49.3	284.0	83.2	46.5	41.5
(-) Claims on Central Bank of Liberia (CoB)	820.5	810.6	810.6	810.2	836.4	795.8
(-) Unbalanced Items	(6.0)	(6.5)	(10.2)	(10.2)	(41.3)	(188.2)
<b>Vertical Check</b>	<b>(0.0)</b>	<b>0.0</b>	<b>(0.0)</b>	<b>0.0</b>	<b>0.0</b>	<b>(0.0)</b>

NBFI: Non-Bank Financial Institutions

Source: Central Bank of Liberia, Monrovia, Liberia.

**MONEY AND BANKING**

CENTRAL BANK OF LIBERIA

**1.1b: Depository Corporations Survey-2007 - continued**
*Millions of Liberian Dollars*

	<b>Jul-07</b>	<b>Aug-07</b>	<b>Sept-07</b>	<b>Oct-07</b>	<b>Nov-07</b>	<b>Dec-07</b>
<b>Foreign Assets (net)</b>	<b>(48,659.1)</b>	<b>(48,543.1)</b>	<b>(48,223.4)</b>	<b>(47,828.2)</b>	<b>(48,269.2)</b>	<b>(47,319.5)</b>
Foreign Assets (MA)	6,308.4	6,411.1	6,482.7	6,868.1	6,972.5	7,456.9
(-) Foreign Liabilities (MA)	57,489.6	57,593.2	57,681.3	57,776.2	57,852.3	57,967.5
Foreign Assets (CoB)	3,589.4	3,524.3	3,869.1	3,953.8	3,706.0	4,019.7
(-) Foreign Liabilities (CoB)	1,067.3	885.2	893.8	873.9	1,095.3	828.6
<b>Domestic Credit</b>	<b>74,969.5</b>	<b>75,326.6</b>	<b>75,479.4</b>	<b>75,518.4</b>	<b>75,562.6</b>	<b>76,462.3</b>
Claims on General Government (net)	71,396.5	71,339.6	71,485.2	71,256.6	70,092.3	71,746.2
Claims on General Government (MA)	73,631.4	73,876.3	73,733.0	73,792.7	73,374.4	74,201.7
(-) General Government Deposits (MA)	2,964.1	3,081.4	3,036.3	3,214.4	3,193.5	2,975.1
Claims on General Government (CoB)	863.8	782.7	860.6	859.7	87.9	735.4
(-) General Government Deposits (CoB)	134.5	238.0	72.1	181.5	176.5	215.9
Claims on Public Corporations (MA)	0.0	0.0	0.0	0.0	0.0	0.0
Claims on Public Corporations (CoB)	187.7	167.7	138.4	186.4	77.9	131.8
Claims on Private Sector (MA)	42.3	30.2	29.7	28.3	30.0	133.0
Claims on Private Sector (CoB)	3,333.6	3,780.8	3,817.4	4,046.3	5,361.2	4,370.0
Claims on NBFIs (MA)	0.0	0.0	0.0	0.0	0.0	0.0
Claims on NBFIs (CoB)	9.3	8.3	8.7	0.8	1.3	81.3
<b>Money</b>	<b>10,392.2</b>	<b>10,533.9</b>	<b>11,246.3</b>	<b>11,360.2</b>	<b>12,268.0</b>	<b>12,467.3</b>
Currency Outside Banks (MA)	2,475.5	2,499.3	2,557.0	2,678.3	2,857.5	3,317.4
Liberian Currency in Circulation (MA)	2,852.9	2,862.5	2,953.0	3,020.6	3,102.4	3,594.4
(-) Currency Holdings (CoB)	377.4	363.2	396.0	342.3	244.8	276.9
<b>Demand Deposits</b>	<b>5,400.9</b>	<b>5,460.9</b>	<b>6,114.1</b>	<b>5,779.0</b>	<b>6,332.1</b>	<b>6,031.9</b>
Demand Deposits (MA)	378.9	388.6	412.5	432.8	404.3	490.2
Demand Deposits (CoB)	5,022.0	5,072.3	5,701.6	5,346.2	5,927.8	5,541.7
<b>Other Deposits</b>	<b>2,515.8</b>	<b>2,573.7</b>	<b>2,575.2</b>	<b>2,902.9</b>	<b>3,078.4</b>	<b>3,118.0</b>
Other Deposits (MA)	20.1	20.3	0.0	0.0	0.0	0.0
Time and Savings Deposits (CoB)	2,495.6	2,553.4	2,575.2	2,902.9	3,078.4	3,118.0
<b>Bonds and Securities (CoB)</b>	<b>0.0</b>	<b>0.0</b>	<b>0.0</b>	<b>0.0</b>	<b>0.0</b>	<b>0.0</b>
<b>Restricted Deposits</b>	<b>48.7</b>	<b>48.7</b>	<b>48.1</b>	<b>48.8</b>	<b>48.0</b>	<b>48.0</b>
<b>Capital Accounts</b>	<b>18,615.8</b>	<b>18,764.2</b>	<b>18,568.5</b>	<b>18,819.9</b>	<b>18,237.0</b>	<b>19,027.7</b>
Capital Accounts (MA)	15,611.3	15,745.0	15,513.4	15,542.0	15,035.5	15,619.8
Capital Accounts (CoB)	3,004.5	3,019.1	3,055.1	3,278.0	3,201.5	3,407.9
<b>Other Items (net)</b>	<b>(2,746.2)</b>	<b>(2,563.2)</b>	<b>(2,606.9)</b>	<b>(2,538.8)</b>	<b>(3,259.5)</b>	<b>(2,400.2)</b>
Unclassified Liabilities (MA)	7,709.3	7,715.1	7,697.9	7,698.1	7,668.1	7,725.7
(-) Unclassified Assets (MA)	9,267.3	9,254.2	9,245.6	9,242.4	9,237.3	9,027.4
(-) Unclassified Assets (CoB)	1,179.6	1,393.1	1,077.0	1,359.6	1,339.6	1,473.9
Unclassified Liabilities (CoB)	1,011.4	1,256.8	1,083.2	1,449.4	1,347.0	1,307.7
Commercial Banks' Deposits (MA)	2,433.5	2,368.0	2,391.4	2,488.7	2,551.9	2,684.5
(-) Reserves (CoB)	2,812.6	2,602.5	2,856.9	2,873.1	3,524.7	2,852.9
Currency Holdings (CoB)	377.4	363.2	396.0	342.3	244.8	276.9
Liabilities to Central Bank (CoB)	0.0	0.0	0.0	0.0	0.0	3.2
(-) Claims on Domestic Banks (MA)	51.6	37.0	17.6	53.8	17.6	56.6
(-) Claims on Central Bank of Liberia (CoB)	789.1	795.4	782.4	782.3	757.3	787.1
(-) Unbalanced Items	(177.6)	(184.1)	(196.0)	(206.1)	(194.9)	(200.3)
<b>Vertical Check</b>	<b>(0.0)</b>	<b>(0.0)</b>	<b>(0.0)</b>	<b>(0.0)</b>	<b>0.0</b>	<b>0.0</b>

NBFIs: Non-Bank Financial Institutions

Source: Central Bank of Liberia, Monrovia, Liberia.



**MONEY AND BANKING**

CENTRAL BANK OF LIBERIA

**1.1c: Depository Corporations Survey- 2008**

Millions of Liberian Dollars

	Jan-08	Feb-08	Mar-08	Apr-08	May-08	Jun-08
<b>Foreign Assets (net)</b>	<b>(43,952.6)</b>	<b>(43,401.5)</b>	<b>(44,650.0)</b>	<b>(43,321.5)</b>	<b>(44,049.5)</b>	<b>(44,503.2)</b>
Foreign Assets (MA)	8,054.1	8,074.1	8,859.2	9,359.3	9,441.6	9,417.1
(-) Foreign Liabilities (MA)	4,088.5	55,426.9	57,425.8	57,011.4	57,358.9	57,814.4
Foreign Assets (CoB)	4,088.5	4,389.8	4,646.6	5,024.5	4,592.3	4,679.9
(-) Foreign Liabilities (CoB)	614.4	438.6	729.9	693.8	724.6	785.8
<b>Domestic Credit</b>	<b>73,550.7</b>	<b>73,533.3</b>	<b>75,653.9</b>	<b>75,570.2</b>	<b>76,294.3</b>	<b>76,962.3</b>
Claims on General Government (net)	68,582.9	68,269.2	70,236.2	69,848.4	70,322.4	71,126.3
Claims on General Government (MA)	71,693.3	71,382.8	73,406.9	73,108.6	73,576.8	74,030.4
(-) General Government Deposits (MA)	3,641.1	3,676.8	3,720.4	3,829.2	3,884.7	3,554.1
Claims on General Government (CoB)	749.2	737.4	737.3	741.6	746.0	746.0
(-) General Government Deposits (CoB)	218.6	174.2	187.6	172.6	115.7	96.0
Claims on Public Corporations (MA)	0.0	0.0	0.0	0.0	0.0	0.0
Claims on Public Corporations (CoB)	167.5	252.4	71.7	65.6	58.8	75.2
Claims on Private Sector (MA)	197.1	195.5	195.0	198.1	200.2	244.9
Claims on Private Sector (CoB)	4,584.5	4,800.2	5,149.7	5,457.8	5,712.5	5,514.9
Claims on NBFIs (MA)	0.0	0.0	0.0	0.0	0.0	0.0
Claims on NBFIs (CoB)	18.8	16.0	1.3	0.2	0.4	1.0
<b>Money</b>	<b>13,109.4</b>	<b>14,014.9</b>	<b>14,016.9</b>	<b>14,643.6</b>	<b>14,856.5</b>	<b>14,552.6</b>
Currency Outside Banks (MA)	3,013.2	2,968.4	2,953.6	2,961.1	2,916.4	2,905.3
Liberian Currency in Circulation (MA)	3,489.1	3,389.1	3,383.5	3,397.2	3,341.3	3,336.7
(-) Currency Holdings (CoB)	475.9	420.7	429.8	436.1	424.9	431.5
<b>Demand Deposits</b>	<b>6,985.7</b>	<b>7,741.7</b>	<b>7,641.6</b>	<b>8,080.7</b>	<b>8,161.9</b>	<b>7,733.2</b>
Demand Deposits (MA)	592.4	624.0	623.2	628.0	772.4	614.6
Demand Deposits (CoB)	6,393.3	7,117.8	7,018.4	7,452.7	7,389.5	7,118.6
<b>Other Deposits</b>	<b>3,110.5</b>	<b>3,304.8</b>	<b>3,421.7</b>	<b>3,601.8</b>	<b>3,778.2</b>	<b>3,914.1</b>
Other Deposits (MA)	0.0	0.0	0.0	0.0	0.0	0.0
Time and Savings Deposits (CoB)	3,110.5	3,304.8	3,421.7	3,601.8	3,778.2	3,914.1
<b>Bonds and Securities (CoB)</b>	<b>0.0</b>	<b>0.0</b>	<b>0.0</b>	<b>0.0</b>	<b>0.0</b>	<b>0.0</b>
<b>Restricted Deposits</b>	<b>48.0</b>	<b>48.0</b>	<b>48.0</b>	<b>47.9</b>	<b>47.6</b>	<b>44.8</b>
<b>Capital Accounts</b>	<b>19,515.2</b>	<b>19,334.0</b>	<b>19,466.1</b>	<b>19,791.8</b>	<b>19,745.5</b>	<b>19,844.4</b>
Capital Accounts (MA)	16,078.8	15,802.1	15,909.6	16,017.3	16,188.7	16,231.6
Capital Accounts (CoB)	3,436.5	3,531.9	3,556.5	3,774.5	3,556.8	3,612.7
<b>Other Items (net)</b>	<b>(3,074.4)</b>	<b>(3,265.2)</b>	<b>(2,527.2)</b>	<b>(2,234.6)</b>	<b>(2,404.9)</b>	<b>(1,982.6)</b>
Unclassified Liabilities (MA)	5,868.2	5,827.4	12,766.5	12,712.1	12,665.1	12,765.0
(-) Unclassified Assets (MA)	7,601.0	7,548.7	13,678.5	13,581.5	13,660.2	13,764.6
(-) Unclassified Assets (CoB)	1,922.0	1,792.9	1,931.0	1,587.8	1,615.9	1,595.2
Unclassified Liabilities (CoB)	1,719.3	1,395.3	1,330.9	1,330.3	1,412.9	1,674.2
Commercial Banks' Deposits (MA)	2,688.0	2,761.7	2,876.7	2,956.7	3,080.5	3,422.5
(-) Reserves (CoB)	3,191.9	3,203.6	3,347.3	3,384.8	3,482.1	3,816.9
Currency Holdings (CoB)	475.9	420.7	429.8	436.1	424.9	431.5
Liabilities to Central Bank (CoB)	0.0	0.1	399.4	0.0	0.0	0.0
(-) Claims on Domestic Banks (MA)	25.4	29.7	284.9	30.5	59.5	25.5
(-) Claims on Central Bank of Liberia (CoB)	799.4	799.4	788.7	792.5	798.7	798.3
(-) Unbalanced Items	(286.2)	(296.0)	(300.1)	(292.6)	(372.0)	(275.3)
<b>Vertical Check</b>	<b>0.0</b>	<b>(0.0)</b>	<b>0.0</b>	<b>(0.0)</b>	<b>0.0</b>	<b>0.0</b>

NBFIs: Non-Bank Financial Institutions

Source: Central Bank of Liberia, Monrovia, Liberia.

**1.2a: Sectoral Balance Sheet of Other Depository Corporations -2006***Thousands of Liberian Dollars*

	<b>Jan-06</b>	<b>Feb-06</b>	<b>Mar-06</b>	<b>Apr-06</b>	<b>May-06</b>	<b>Jun-06</b>
<b>Assets</b>						
Reserves	2,076,342	1,827,157	1,879,069	1,964,100	1,993,601	2,103,169
<i>of which: Cash on Hand: Coins/LD Notes</i>	252,031	276,007	264,468	250,574	233,624	261,275
Foreign Assets	2,373,878	3,019,534	2,720,406	2,707,788	2,443,721	2,725,901
Claims on General Government	794,524	772,749	782,440	781,127	787,944	810,428
Claims on Public Corporations	60,091	87,239	122,967	110,004	134,804	209,317
Claims on Private Sector	1,874,931	1,972,381	2,100,003	2,364,631	2,270,150	2,368,333
Claims on Central Bank of Liberia	741,902	745,184	745,184	755,033	761,598	781,295
Claims on NBFIs	97,023	95,725	89,580	83,754	97,874	87,910
Unclassified Assets	729,050	959,329	761,177	900,583	691,097	669,170
<b>Total Assets</b>	<b>8,757,099</b>	<b>9,479,297</b>	<b>9,200,827</b>	<b>9,667,019</b>	<b>9,180,788</b>	<b>9,755,524</b>
	<b>Jan-06</b>	<b>Feb-06</b>	<b>Mar-06</b>	<b>Apr-06</b>	<b>May-06</b>	<b>Jun-06</b>
<b>Liabilities</b>						
Demand Deposits	2,786,636	3,190,865	2,868,928	2,975,394	2,837,215	3,119,668
Time and Savings Deposits	1,409,416	1,412,828	1,445,611	1,520,422	1,537,960	1,647,661
Restricted Deposits	445,777	447,425	447,425	452,370	455,667	465,556
Bonds and Securities	0	0	0	0	0	0
Foreign Liabilities	1,458,870	1,681,526	1,696,220	1,573,616	1,368,178	1,554,305
Government Deposits	171,826	199,320	190,835	180,586	188,688	189,798
Liabilities to Central Bank of Liberia	67,368	67,078	173,368	54,613	52,070	52,402
Capital Accounts	1,623,100	1,611,806	1,431,861	1,488,874	1,502,216	1,671,310
Unclassified Liabilities	794,106	868,449	946,579	1,421,143	1,238,795	1,054,823
<b>Total Liabilities</b>	<b>8,757,099</b>	<b>9,479,297</b>	<b>9,200,827</b>	<b>9,667,019</b>	<b>9,180,788</b>	<b>9,755,524</b>
<b>Vertical Check (Assets/Liabilities)</b>	<b>0</b>	<b>0</b>	<b>0</b>	<b>0</b>	<b>0</b>	<b>0</b>

NBFIs: Non-Bank Financial Institutions

*Source: Central Bank of Liberia, Monrovia, Liberia.*

**1.2a: Sectoral Balance Sheet of Other Depository Corporations -2006-** continued*Thousands of Liberian Dollars*

	<b>Jul-06</b>	<b>Aug-06</b>	<b>Sep-06</b>	<b>Oct-06</b>	<b>Nov-06</b>	<b>Dec-06</b>
<b>Assets</b>						
Reserves	2,187,983	2,560,707	2,243,196	2,279,897	3,051,112	2,398,357
<i>of which: Cash on Hand: Coins/LD Notes</i>	265,786	316,495	259,516	201,448	135,484	166,302
Foreign Assets	3,197,226	2,924,921	2,744,662	2,687,110	2,378,834	3,122,399
Claims on General Government	794,387	829,042	819,788	819,530	793,554	822,887
Claims on Public Corporations	255,661	209,296	190,794	194,749	152,844	145,990
Claims on Private Sector	2,325,205	2,375,046	2,517,273	2,791,398	3,061,718	2,859,204
Claims on Central Bank of Liberia	781,295	794,426	781,295	781,295	748,467	781,295
Claims on NBFIs	88,872	90,400	89,099	92,984	89,929	89,931
Unclassified Assets	689,081	734,145	784,906	784,234	772,638	776,526
<b>Total Assets</b>	<b>10,319,710</b>	<b>10,517,982</b>	<b>10,171,013</b>	<b>10,431,197</b>	<b>11,049,097</b>	<b>10,996,589</b>
	<b>Jul-06</b>	<b>Aug-06</b>	<b>Sep-06</b>	<b>Oct-06</b>	<b>Nov-06</b>	<b>Dec-06</b>
<b>Liabilities</b>						
Demand Deposits	3,494,766	3,576,487	3,445,518	3,593,258	3,982,072	3,973,209
Time and Savings Deposits	1,702,491	1,728,377	1,742,451	1,841,764	1,832,489	1,927,962
Restricted Deposits	465,556	472,149	465,556	465,556	449,074	465,556
Bonds and Securities	0	0	0	0	0	0
Foreign Liabilities	1,483,572	1,534,268	1,299,568	1,400,219	1,498,648	1,321,121
Government Deposits	183,662	219,678	209,005	188,713	214,310	257,647
Liabilities to Central Bank of Liberia	38,139	52,524	24,890	24,890	46,818	11,642
Capital Accounts	1,677,868	1,986,581	1,754,349	1,664,537	1,794,402	1,865,282
Unclassified Liabilities	1,273,656	947,918	1,229,676	1,252,259	1,231,284	1,174,169
<b>Total Liabilities</b>	<b>10,319,710</b>	<b>10,517,982</b>	<b>10,171,013</b>	<b>10,431,197</b>	<b>11,049,097</b>	<b>10,996,589</b>
<b>Vertical Check (Assets/Liabilities)</b>	<b>0</b>	<b>0</b>	<b>0</b>	<b>0</b>	<b>0</b>	<b>0</b>

NBFIs: Non-Bank Financial Institutions

Source: Central Bank of Liberia, Monrovia, Liberia.

**1.2b: Sectoral Balance Sheet of Other Depository Corporations-2007***Thousands of Liberian Dollars*

	<b>Jan-07</b>	<b>Feb-07</b>	<b>Mar-07</b>	<b>Apr-07</b>	<b>May-07</b>	<b>Jun-07</b>
<b>Assets</b>						
Reserves	2,458,424	2,396,151	2,696,376	2,647,611	2,994,494	2,843,346
<i>of which: Cash on Hand: Coins/LD Notes</i>	233,337	253,824	270,539	271,884	295,486	353,307
Foreign Assets	2,975,317	3,223,489	3,013,467	3,629,989	3,027,519	3,594,500
Claims on General Government	841,713	833,849	830,822	850,033	869,308	868,858
Claims on Public Corporations	94,169	65,099	151,539	163,266	121,126	135,189
Claims on Private Sector	2,761,368	2,794,165	2,842,357	2,874,394	3,132,225	3,099,599
Claims on Central Bank of Liberia	820,478	810,637	810,637	810,171	836,415	795,792
Claims on NBFIs	5,091	8,375	6,809	19,061	3,799	8,693
Unclassified Assets	963,874	1,256,474	1,011,815	1,373,729	1,226,968	1,238,383
<b>Total Assets</b>	<b>10,920,435</b>	<b>11,388,237</b>	<b>11,363,823</b>	<b>12,368,255</b>	<b>12,211,853</b>	<b>12,584,360</b>
	<b>Jan-07</b>	<b>Feb-07</b>	<b>Mar-07</b>	<b>Apr-07</b>	<b>May-07</b>	<b>Jun-07</b>
<b>Liabilities</b>						
Demand Deposits	4,247,474	4,775,046	4,840,760	4,802,171	4,931,761	5,031,103
Time and Savings Deposits	2,024,786	2,061,371	2,027,371	2,177,918	2,381,828	2,489,695
Restricted Deposits	30,156	30,156	30,020	30,016	30,016	29,905
Bonds and Securities	0	0	0	0	0	0
Foreign Liabilities	1,234,376	1,105,984	916,285	1,519,037	832,310	928,551
Government Deposits	74,180	107,944	81,424	74,935	65,398	116,353
Liabilities to Central Bank of Liberia	1,044	0	3,366	0	2,699	0
Capital Accounts	2,162,694	2,135,103	2,404,099	2,505,148	2,584,377	2,576,252
Unclassified Liabilities	1,145,725	1,172,633	1,060,499	1,259,031	1,383,464	1,412,501
<b>Total Liabilities</b>	<b>10,920,435</b>	<b>11,388,237</b>	<b>11,363,823</b>	<b>12,368,255</b>	<b>12,211,853</b>	<b>12,584,360</b>
<b>Vertical Check (Assets/Liabilities)</b>	<b>0</b>	<b>0</b>	<b>0</b>	<b>0</b>	<b>0</b>	<b>0</b>

NBFIs: Non-Bank Financial Institutions

*Source: Central Bank of Liberia, Monrovia, Liberia.*

**MONEY AND BANKING**

CENTRAL BANK OF LIBERIA

**1.2b: Sectoral Balance Sheet of Other Depository Corporations-2007 - continued**

*Thousands of Liberian Dollars*

	<b>Jul-07</b>	<b>Aug-07</b>	<b>Sept-07</b>	<b>Oct-07</b>	<b>Nov-07</b>	<b>Dec-07</b>
<b>Assets</b>						
Reserves	2,812,634	2,602,499	2,856,883	2,873,100	3,524,655	2,852,863
<i>of which: Cash on Hand: Coins/LD Notes</i>	377,377	363,210	395,990	342,276	244,836	276,933
Foreign Assets	3,589,352	3,524,310	3,869,077	3,953,783	3,705,962	4,019,679
Claims on General Government	863,843	870,502	860,570	859,731	87,870	735,444
Claims on Public Corporations	187,744	167,654	138,400	186,356	77,851	131,815
Claims on Private Sector	3,333,648	3,692,939	3,817,415	4,046,349	5,361,152	4,370,004
Claims on Central Bank of Liberia	789,141	795,381	782,377	782,303	757,342	787,074
Claims on NBFIs	9,283	8,315	8,703	814	1,285	81,332
Unclassified Assets	1,179,567	1,393,109	1,076,983	1,359,556	1,339,621	1,473,894
<b>Total Assets</b>	<b>12,765,212</b>	<b>13,054,709</b>	<b>13,410,407</b>	<b>14,061,992</b>	<b>14,855,738</b>	<b>14,452,105</b>
	<b>Jul-07</b>	<b>Aug-07</b>	<b>Sept-07</b>	<b>Oct-07</b>	<b>Nov-07</b>	<b>Dec-07</b>
<b>Liabilities</b>						
Demand Deposits	5,022,015	5,072,294	5,701,603	5,346,216	5,927,818	5,541,712
Time and Savings Deposits	2,495,629	2,553,404	2,575,154	2,902,937	3,078,420	3,117,965
Restricted Deposits	29,889	29,889	29,366	30,033	29,200	29,190
Bonds and Securities	0	0	0	0	0	0
Foreign Liabilities	1,067,256	885,221	893,849	873,937	1,095,325	828,562
Government Deposits	134,539	237,986	72,093	181,493	176,469	215,934
Liabilities to Central Bank of Liberia	0	0	0	0	0	3,188
Capital Accounts	3,004,533	3,019,149	3,055,106	3,277,977	3,201,481	3,407,862
Unclassified Liabilities	1,011,350	1,256,766	1,083,236	1,449,400	1,347,026	1,307,694
<b>Total Liabilities</b>	<b>12,765,212</b>	<b>13,054,709</b>	<b>13,410,407</b>	<b>14,061,992</b>	<b>14,855,738</b>	<b>14,452,105</b>
<b>Vertical Check (Assets/Liabilities)</b>	<b>0</b>	<b>0</b>	<b>0</b>	<b>0</b>	<b>0</b>	<b>0</b>

NBFIs: Non-Bank Financial Institutions

Source: Central Bank of Liberia, Monrovia, Liberia.

**MONEY AND BANKING**

CENTRAL BANK OF LIBERIA

**1.2c: Sectoral Balance Sheet of Other Depository Corporations- 2008**

*Thousands of Liberian Dollars*

	<b>Jan-08</b>	<b>Feb-08</b>	<b>Mar-08</b>	<b>Apr-08</b>	<b>May-08</b>	<b>Jun-08</b>
<b>Assets</b>						
Reserves	3,191,921	3,203,568	3,347,320	3,384,782	3,482,100	3,816,883
<i>of which: Cash on Hand: Coins/LD Notes</i>	475,915	420,680	429,828	436,107	424,921	431,466
Foreign Assets	4,088,460	4,389,815	4,646,555	5,024,479	4,592,347	4,679,861
Claims on General Government	749,244	737,380	737,326	741,620	745,967	745,967
Claims on Public Corporations	167,463	252,415	71,656	65,627	58,790	75,161
Claims on Private Sector	4,584,519	4,800,213	5,149,737	5,457,794	5,712,516	5,514,944
Claims on Central Bank of Liberia	799,432	799,432	788,681	792,508	798,686	798,296
Claims on NBFIs	18,850	15,994	1,297	180	356	1,006
Unclassified Assets	1,921,953	1,792,912	1,930,959	1,587,847	1,615,882	1,595,190
<b>Total Assets</b>	<b>15,521,841</b>	<b>15,991,729</b>	<b>16,673,532</b>	<b>17,054,837</b>	<b>17,006,645</b>	<b>17,227,307</b>
	<b>Jan-08</b>	<b>Feb-08</b>	<b>Mar-08</b>	<b>Apr-08</b>	<b>May-08</b>	<b>Jun-08</b>
<b>Liabilities</b>						
Demand Deposits	6,393,258	7,117,765	7,018,379	7,452,653	7,389,540	7,118,557
Time and Savings Deposits	3,110,529	3,304,777	3,421,656	3,601,835	3,778,246	3,914,100
Restricted Deposits	29,190	29,190	29,190	29,116	28,844	26,004
Bonds and Securities	0	0	0	0	0	0
Foreign Liabilities	614,415	438,568	729,901	693,833	724,570	785,769
Government Deposits	218,647	174,202	187,615	172,599	115,704	95,962
Liabilities to Central Bank of Liberia	0	65	399,392	0	0	0
Capital Accounts	3,436,456	3,531,892	3,556,504	3,774,492	3,556,829	3,612,749
Unclassified Liabilities	1,719,347	1,395,270	1,330,896	1,330,309	1,412,912	1,674,166
<b>Total Liabilities</b>	<b>15,521,841</b>	<b>15,991,729</b>	<b>16,673,532</b>	<b>17,054,837</b>	<b>17,006,645</b>	<b>17,227,307</b>
<b>Vertical Check (Assets/Liabilities)</b>	<b>0</b>	<b>0</b>	<b>0</b>	<b>0</b>	<b>0</b>	<b>0</b>

NBFIs: Non-Bank Financial Institutions

Source: Central Bank of Liberia, Monrovia, Liberia.

## MONEY AND BANKING

CENTRAL BANK OF LIBERIA

### 1.3a: Sectoral Balance Sheet of Central Bank of Liberia 2006

*Thousands of Liberian Dollars*

	Jan-06	Feb-06	Mar-06	Apr-06	May-06	Jun-06
<b>Assets</b>						
Foreign Assets	1,855,735	2,244,151	2,248,475	2,625,880	2,860,053	2,982,665
Claims on General Government	66,336,114	66,318,149	66,427,915	65,166,296	65,400,275	65,887,122
Claims on Public Corporations	558	552	552	558	562	574
Claims on Private Sector	171,962	221,969	222,689	224,135	225,456	204,027
Claims on Domestic Banks	144,316	146,420	131,645	198,361	162,788	99,170
Claims on NBFIs	0	0	0	0	0	0
Unclassified Assets	8,752,661	8,736,825	8,731,680	8,478,171	8,468,157	8,469,675
<b>Total Assets</b>	<b>77,261,345</b>	<b>77,668,066</b>	<b>77,762,957</b>	<b>76,693,400</b>	<b>77,117,291</b>	<b>77,643,233</b>
	Jan-06	Feb-06	Mar-06	Apr-06	May-06	Jun-06
<b>Liabilities</b>						
Reserve Money	4,004,326	4,082,440	3,773,985	3,901,898	3,924,942	4,015,231
Other Deposits	15,971	15,803	15,803	18,889	19,027	19,439
Restricted Reserves	18,781	18,781	18,781	18,781	18,781	18,781
Foreign Liabilities	51,847,173	51,986,546	52,065,343	50,594,252	50,679,311	50,774,051
Liabilities to General Government	342,583	652,695	946,461	1,257,013	1,408,213	1,319,343
Capital Accounts	12,686,773	12,588,749	12,604,881	12,711,807	12,840,756	13,199,218
Unclassified Liabilities	8,345,738	8,323,052	8,337,704	8,190,760	8,226,262	8,297,169
<b>Total Liabilities</b>	<b>77,261,345</b>	<b>77,668,066</b>	<b>77,762,957</b>	<b>76,693,400</b>	<b>77,117,291</b>	<b>77,643,233</b>
<b>Vertical Check (Assets/Liabilities)</b>	<b>0</b>	<b>0</b>	<b>(0)</b>	<b>0</b>	<b>0</b>	<b>0</b>

NBFIs: Non-Bank Financial Institutions

Source: Central Bank of Liberia, Monrovia, Liberia.

**MONEY AND BANKING**

CENTRAL BANK OF LIBERIA

**1.3a: Sectoral Balance Sheet of Central Bank of Liberia 2006 - continued**

*Thousands of Liberian Dollars*

	<b>Jul-06</b>	<b>Aug-06</b>	<b>Sep-06</b>	<b>Oct-06</b>	<b>Nov-06</b>	<b>Dec-06</b>
<b>Assets</b>						
Foreign Assets	2,979,475	3,856,317	3,697,934	3,766,008	3,997,435	4,280,597
Claims on General Government	66,091,482	66,367,487	66,232,132	66,357,252	65,852,454	66,598,767
Claims on Public Corporations	574	582	574	574	554	574
Claims on Private Sector	203,927	205,405	252,253	246,659	209,979	220,541
Claims on Domestic Banks	121,029	62,981	70,165	61,312	53,963	46,512
Claims on NBFIs	0	0	0	0	0	0
Unclassified Assets	8,469,436	8,470,618	8,460,435	8,465,915	8,377,798	8,353,494
<b>Total Assets</b>	<b>77,865,923</b>	<b>78,963,389</b>	<b>78,713,494</b>	<b>78,897,720</b>	<b>78,492,183</b>	<b>79,500,484</b>
	<b>Jul-06</b>	<b>Aug-06</b>	<b>Sep-06</b>	<b>Oct-06</b>	<b>Nov-06</b>	<b>Dec-06</b>
<b>Liabilities</b>						
Reserve Money	4,066,583	4,158,638	4,215,077	4,153,125	4,511,648	4,842,399
Other Deposits	19,439	19,714	19,439	19,439	18,752	19,439
Restricted Reserves	18,781	18,781	18,781	18,781	18,781	18,781
Foreign Liabilities	50,944,825	50,947,630	51,019,796	51,068,445	51,141,242	51,330,043
Liabilities to General Government	1,314,042	1,750,519	1,906,580	1,977,078	1,884,540	1,773,923
Capital Accounts	13,188,743	13,427,059	13,187,362	13,297,951	12,537,002	13,058,778
Unclassified Liabilities	8,313,509	8,641,048	8,346,459	8,362,900	8,380,217	8,457,121
<b>Total Liabilities</b>	<b>77,865,923</b>	<b>78,963,389</b>	<b>78,713,494</b>	<b>78,897,720</b>	<b>78,492,183</b>	<b>79,500,484</b>
<b>Vertical Check (Assets/Liabilities)</b>	<b>0</b>	<b>0</b>	<b>0</b>	<b>0</b>	<b>0</b>	<b>(0)</b>

NBFIs: Non-Bank Financial Institutions

Source: Central Bank of Liberia, Monrovia, Liberia.



**MONEY AND BANKING**

CENTRAL BANK OF LIBERIA

**1.3b: Sectoral Balance Sheet of Central Bank of Liberia -2007**
*Thousands of Liberian Dollars*

	<b>Jan-07</b>	<b>Feb-07</b>	<b>Mar-07</b>	<b>Apr-07</b>	<b>May-07</b>	<b>Jun-07</b>
<b>Assets</b>						
Foreign Assets	5,020,926	5,070,528	5,576,208	6,128,469	6,545,719	6,163,764
Claims on General Government	67,153,609	67,072,755	67,203,361	72,867,896	73,503,549	73,631,169
Claims on Public Corporations	588	582	582	582	598	598
Claims on Private Sector	144,210	121,080	121,338	120,723	50,560	49,700
Claims on Domestic Banks	62,791	49,295	284,033	83,241	46,480	41,513
Claims on NBFIs	0	0	0	0	0	0
Unclassified Assets	8,454,636	8,480,112	8,320,721	9,174,413	9,238,628	9,258,264
<b>Total Assets</b>	<b>80,836,760</b>	<b>80,794,352</b>	<b>81,506,243</b>	<b>88,375,324</b>	<b>89,385,533</b>	<b>89,145,008</b>
	<b>Jan-07</b>	<b>Feb-07</b>	<b>Mar-07</b>	<b>Apr-07</b>	<b>May-07</b>	<b>Jun-07</b>
<b>Liabilities</b>						
Reserve Money	4,994,719	4,926,331	5,244,450	4,935,068	5,628,375	5,493,773
Other Deposits	19,921	19,714	19,714	19,714	20,264	20,264
Restricted Reserves	18,781	18,781	18,781	18,781	18,781	18,781
Foreign Liabilities	51,429,935	51,506,111	51,549,035	57,178,302	57,290,478	57,389,152
Liabilities to General Government	2,285,430	2,396,653	2,808,662	3,205,048	3,067,896	2,802,304
Capital Accounts	13,550,213	13,404,958	13,334,299	13,569,806	14,062,741	14,150,102
Unclassified Liabilities	8,537,762	8,521,803	8,531,300	9,448,604	9,296,998	9,270,632
<b>Total Liabilities</b>	<b>80,836,760</b>	<b>80,794,352</b>	<b>81,506,243</b>	<b>88,375,324</b>	<b>89,385,534</b>	<b>89,145,008</b>
<b>Vertical Check (Assets/Liabilities)</b>	<b>(0)</b>	<b>(0)</b>	<b>(0)</b>	<b>(0)</b>	<b>(0)</b>	<b>(0)</b>

NBFIs: Non-Bank Financial Institutions

*Source: Central Bank of Liberia, Monrovia, Liberia.*

**MONEY AND BANKING**

CENTRAL BANK OF LIBERIA

**1.3b: Sectoral Balance Sheet of Central Bank of Liberia -2007** - continued

*Thousands of Liberian Dollars*

	<b>Jul-07</b>	<b>Aug-07</b>	<b>Sept-07</b>	<b>Oct-07</b>	<b>Nov-07</b>	<b>Dec-07</b>
<b>Assets</b>						
Foreign Assets	6,308,424	6,411,066	6,482,696	6,868,146	6,972,526	7,456,881
Claims on General Government	73,631,377	73,876,299	73,733,030	73,792,689	73,374,433	74,201,719
Claims on Public Corporations	0	0	0	0	0	0
Claims on Private Sector	42,304	30,166	29,683	28,290	30,012	132,996
Claims on Domestic Banks	51,559	36,989	17,566	53,812	17,586	56,643
Claims on NBFIs	0	0	0	0	0	0
Unclassified Assets	9,267,252	9,254,186	9,245,650	9,242,415	9,237,280	9,027,441
<b>Total Assets</b>	<b>89,300,916</b>	<b>89,608,706</b>	<b>89,508,625</b>	<b>89,985,353</b>	<b>89,631,837</b>	<b>90,875,680</b>
	<b>Jul-07</b>	<b>Aug-07</b>	<b>Sept-07</b>	<b>Oct-07</b>	<b>Nov-07</b>	<b>Dec-07</b>
<b>Liabilities</b>						
Reserve Money	5,487,687	5,435,021	5,560,925	5,735,937	5,863,630	6,568,769
Other Deposits	20,127	20,264	0	0	0	0
Restricted Reserves	18,781	18,781	18,781	18,781	18,781	18,781
Foreign Liabilities	57,489,590	57,593,211	57,681,325	57,776,207	57,852,320	57,967,541
Liabilities to General Government	2,964,145	3,081,356	3,036,342	3,214,357	3,193,523	2,975,058
Capital Accounts	15,611,260	15,745,011	15,513,378	15,541,968	15,035,475	15,619,824
Unclassified Liabilities	7,709,326	7,715,062	7,697,875	7,698,103	7,668,107	7,725,708
<b>Total Liabilities</b>	<b>89,300,917</b>	<b>89,608,706</b>	<b>89,508,625</b>	<b>89,985,353</b>	<b>89,631,837</b>	<b>90,875,680</b>
<b>Vertical Check (Assets/Liabilities)</b>	<b>(0)</b>	<b>0</b>	<b>(0)</b>	<b>0</b>	<b>0</b>	<b>0</b>

NBFIs: Non-Bank Financial Institutions

Source: Central Bank of Liberia, Monrovia, Liberia.

**MONEY AND BANKING**

CENTRAL BANK OF LIBERIA

**1.3c: Sectoral Balance Sheet of Central Bank of Liberia - 2008**
*Thousands of Liberian Dollars*

	<b>Jan-08</b>	<b>Feb-08</b>	<b>Mar-08</b>	<b>Apr-08</b>	<b>May-08</b>	<b>Jun-08</b>
<b>Assets</b>						
Foreign Assets	8,054,117	8,074,064	8,859,167	9,359,273	9,441,557	9,417,110
Claims on General Government	71,693,324	71,382,812	73,406,885	73,108,609	73,576,815	74,030,440
Claims on Public Corporations	0	0	0	0	0	0
Claims on Private Sector	197,059	195,478	194,959	198,141	200,201	244,875
Claims on Domestic Banks	25,371	29,704	284,879	30,549	59,502	25,513
Claims on NBFIs	0	0	0	0	0	0
Unclassified Assets	7,601,016	7,548,682	13,678,493	13,581,470	13,660,173	13,764,582
<b>Total Assets</b>	<b>87,570,888</b>	<b>87,230,741</b>	<b>96,424,383</b>	<b>96,278,041</b>	<b>96,938,249</b>	<b>97,482,520</b>
	<b>Jan-08</b>	<b>Feb-08</b>	<b>Mar-08</b>	<b>Apr-08</b>	<b>May-08</b>	<b>Jun-08</b>
<b>Liabilities</b>						
Reserve Money	6,483,333	6,478,768	6,583,254	6,689,276	6,822,197	7,098,584
Other Deposits	0	0	0	0	0	0
Restricted Reserves	18,781	18,781	18,781	18,781	18,781	18,781
Foreign Liabilities	55,480,770	55,426,853	57,425,831	57,011,445	57,358,857	57,814,405
Liabilities to General Government	3,641,067	3,676,834	3,720,391	3,829,194	3,884,673	3,554,118
Capital Accounts	16,078,756	15,802,089	15,909,646	16,017,264	16,188,679	16,231,624
Unclassified Liabilities	5,868,182	5,827,417	12,766,481	12,712,081	12,665,061	12,765,007
<b>Total Liabilities</b>	<b>87,570,888</b>	<b>87,230,741</b>	<b>96,424,384</b>	<b>96,278,041</b>	<b>96,938,249</b>	<b>97,482,520</b>
<b>Vertical Check (Assets/Liabilities)</b>	<b>0</b>	<b>0</b>	<b>(0)</b>	<b>0</b>	<b>0</b>	<b>0</b>

NBFIs: Non-Bank Financial Institutions

Source: Central Bank of Liberia, Monrovia, Liberia.

**MONEY AND BANKING**

CENTRAL BANK OF LIBERIA

**1.4a: Commercial Banks' Loans By Economic Sector-2006**

Thousands of Liberian Dollars

Sector	Jan-06		Feb-06		Mar-06		Apr-06		May-06		Jun-06	
	L\$	%	L\$	%	L\$	%	L\$	%	L\$	%	L\$	%
<b>1. Agriculture</b>	<b>267,514</b>	<b>9.7</b>	<b>287,667</b>	<b>10.2</b>	<b>271,104</b>	<b>9.5</b>	<b>274,501</b>	<b>9.1</b>	<b>257,674</b>	<b>11.9</b>	<b>250,399</b>	<b>7.7</b>
1.1 Rubber	5,041	0.2	6,738	0.2	6,618	0.2	7,349	0.2	12,658	0.6	34,117	1.1
1.2 Forestry	148,274	5.4	145,995	5.2	144,388	5.0	145,113	4.8	147,264	6.8	147,631	4.5
1.3 Fishery	9,887	0.4	9,428	0.3	9,385	0.3	9,435	0.3	9,493	0.4	0	0.0
1.4 Others	104,312	3.8	125,507	4.5	110,713	3.9	112,604	3.7	88,259	4.1	68,652	2.1
<b>2. Mining &amp; Quarrying</b>	<b>1,136</b>	<b>0.0</b>	<b>1,134</b>	<b>0.0</b>	<b>1,122</b>	<b>0.0</b>	<b>1,193</b>	<b>0.0</b>	<b>1,211</b>	<b>0.1</b>	<b>1,289</b>	<b>0.0</b>
2.1 Iron Ore	0	0.0	0	0.0	0	0.0	0	0.0	0	0.0	0	0.0
2.2 Quarrying	1,136	0.0	1,134	0.0	1,122	0.0	1,193	0.0	1,211	0.1	1,289	0.0
<b>3. Manufacturing</b>	<b>13,838</b>	<b>0.5</b>	<b>13,203</b>	<b>0.5</b>	<b>13,513</b>	<b>0.5</b>	<b>27,832</b>	<b>0.9</b>	<b>34,821</b>	<b>1.6</b>	<b>35,860</b>	<b>1.1</b>
<b>4. Construction</b>	<b>82,815</b>	<b>3.0</b>	<b>84,755</b>	<b>3.0</b>	<b>80,825</b>	<b>2.8</b>	<b>80,755</b>	<b>2.7</b>	<b>101,725</b>	<b>4.7</b>	<b>104,037</b>	<b>3.2</b>
4.1 Mortgage Loans	15,502	0.6	0	0.0	2,524	0.1	0	0.0	0	0.0	0	0.0
4.2 Home Improvement	12,719	0.5	14,801	0.5	14,637	0.5	14,827	0.5	17,644	0.8	15,292	0.5
4.3 Others	54,595	2.0	69,954	2.5	63,664	2.2	65,928	2.2	84,081	3.9	88,745	2.7
<b>5. Trans., Storage &amp; Comm.</b>	<b>106,673</b>	<b>3.9</b>	<b>111,195</b>	<b>4.0</b>	<b>106,246</b>	<b>3.7</b>	<b>120,032</b>	<b>4.0</b>	<b>122,585</b>	<b>5.7</b>	<b>111,950</b>	<b>3.5</b>
5.1 Transportation	65,638	2.4	69,016	2.5	62,641	2.2	70,842	2.4	78,821	3.6	68,621	2.1
5.2 Storage	908	0.0	907	0.0	897	0.0	909	0.0	923	0.0	0	0.0
5.3 Communication	40,127	1.5	41,272	1.5	42,707	1.5	48,281	1.6	42,841	2.0	43,329	1.3
<b>6. Trade, Hotel &amp; Rest.</b>	<b>386,696</b>	<b>14.0</b>	<b>411,011</b>	<b>14.6</b>	<b>458,298</b>	<b>16.0</b>	<b>523,995</b>	<b>17.4</b>	<b>536,816</b>	<b>24.8</b>	<b>616,572</b>	<b>19.0</b>
6.1 Diamond trade	0	0.0	0	0.0	0	0.0	0	0.0	0	0.0	0	0.0
6.2 Other trade	356,763	12.9	381,125	13.5	427,749	14.9	490,335	16.3	500,939	23.1	578,961	17.8
6.3 Hotels	29,139	1.1	29,092	1.0	29,764	1.0	32,921	1.1	34,667	1.6	36,439	1.1
6.4 Restaurants	795	0.0	794	0.0	785	0.0	739	0.0	1,211	0.1	1,172	0.0
<b>7. Others</b>	<b>1,902,423</b>	<b>68.9</b>	<b>1,903,982</b>	<b>67.7</b>	<b>1,930,496</b>	<b>67.5</b>	<b>1,984,742</b>	<b>65.9</b>	<b>1,110,347</b>	<b>51.3</b>	<b>2,124,783</b>	<b>65.5</b>
7.1 Services	199,176	7.2	196,554	7.0	238,332	8.3	270,221	9.0	65,071	3.0	294,390	9.1
7.2 Personal	153,701	5.6	156,932	5.6	156,282	5.5	162,720	5.4	103,210	4.8	189,722	5.8
7.3 GOL	685,107	24.8	684,263	24.3	676,661	23.6	685,469	22.8	65,271	3.0	706,947	21.8
7.4 Central Bank of Liberia	746,146	27.0	745,226	26.5	736,947	25.8	746,540	24.8	757,710	35.0	769,931	23.7
7.5 Public Corporations	40,615	1.5	44,899	1.6	45,325	1.6	46,246	1.5	43,493	2.0	86,923	2.7
7.6 Others	77,678	2.8	76,108	2.7	76,948	2.7	73,545	2.4	75,592	3.5	76,870	2.4
<b>TOTAL</b>	<b>2,761,095</b>	<b>100.0</b>	<b>2,812,948</b>	<b>100.0</b>	<b>2,861,603</b>	<b>100.0</b>	<b>3,013,050</b>	<b>100.0</b>	<b>2,165,180</b>	<b>100.0</b>	<b>3,244,891</b>	<b>100.0</b>

Source: Central Bank of Liberia, Monrovia, Liberia.

**1.4a: Commercial Banks' Loans By Economic Sector-2006** - continued*Thousands of Liberian Dollars*

Sector	Jul-06		Aug-06		Sep-06		Oct-06		Nov-06		Dec-06	
	L\$	%	L\$	%	L\$	%	L\$	%	L\$	%	L\$	%
<b>1. Agriculture</b>	<b>259,558</b>	<b>7.9</b>	<b>239,067</b>	<b>7.5</b>	<b>255,873</b>	<b>7.7</b>	<b>254,631</b>	<b>7.7</b>	<b>260,527</b>	<b>6.8</b>	<b>260,573</b>	<b>7.1</b>
1.1 Rubber	15,103	0.5	16,364	0.5	20,172	0.6	21,157	0.6	42,064	1.1	29,004	0.8
1.2 Forestry	163,195	5.0	156,961	4.9	160,299	4.8	164,295	5.0	158,409	4.1	163,976	4.5
1.3 Fishery	9,610	0.3	9,433	0.3	15,008	0.5	9,363	0.3	52,792	1.4	9,217	0.3
1.4 Others	71,651	2.2	56,309	1.8	60,395	1.8	59,817	1.8	7,261	0.2	58,376	1.6
<b>2. Mining &amp; Quarrying</b>	<b>1,306</b>	<b>0.0</b>	<b>1,306</b>	<b>0.0</b>	<b>1,374</b>	<b>0.0</b>	<b>1,428</b>	<b>0.0</b>	<b>1,405</b>	<b>0.0</b>	<b>1,366</b>	<b>0.0</b>
2.1 Iron Ore	0	0.0	0	0.0	0	0.0	0	0.0	0	0.0	0	0.0
2.2 Quarrying	1,306	0.0	1,306	0.0	1,374	0.0	1,428	0.0	1,405	0.0	1,366	0.0
<b>3. Manufacturing</b>	<b>36,693</b>	<b>1.1</b>	<b>37,129</b>	<b>1.2</b>	<b>37,002</b>	<b>1.1</b>	<b>36,448</b>	<b>1.1</b>	<b>41,301</b>	<b>1.1</b>	<b>41,767</b>	<b>1.1</b>
<b>4. Construction</b>	<b>104,423</b>	<b>3.2</b>	<b>111,223</b>	<b>3.5</b>	<b>118,926</b>	<b>3.6</b>	<b>118,501</b>	<b>3.6</b>	<b>212,404</b>	<b>5.5</b>	<b>215,543</b>	<b>5.9</b>
4.1 Mortgage Loans	0	0.0	0	0.0	0	0.0	1,964	0.1	3,744	0.1	1,423	0.0
4.2 Home Improvement	15,498	0.5	14,820	0.5	15,587	0.5	16,303	0.5	21,199	0.6	18,977	0.5
4.3 Others	88,924	2.7	96,404	3.0	103,339	3.1	100,235	3.0	187,461	4.9	195,143	5.3
<b>5. Trans., Storage &amp; Comm.</b>	<b>113,501</b>	<b>3.5</b>	<b>88,605</b>	<b>2.8</b>	<b>110,321</b>	<b>3.3</b>	<b>110,011</b>	<b>3.3</b>	<b>165,936</b>	<b>4.3</b>	<b>149,712</b>	<b>4.1</b>
5.1 Transportation	69,538	2.1	55,408	1.7	62,724	1.9	62,495	1.9	77,983	2.0	70,804	1.9
5.2 Storage	0	0.0	0	0.0	0	0.0	0	0.0	0	0.0	0	0.0
5.3 Communication	43,963	1.3	33,197	1.0	47,597	1.4	47,516	1.4	87,953	2.3	78,908	2.2
<b>6. Trade, Hotel &amp; Rest.</b>	<b>635,224</b>	<b>19.3</b>	<b>648,678</b>	<b>20.3</b>	<b>536,996</b>	<b>16.1</b>	<b>516,148</b>	<b>15.7</b>	<b>787,066</b>	<b>20.4</b>	<b>691,567</b>	<b>18.8</b>
6.1 Diamond trade	0	0.0	0	0.0	0	0.0	0	0.0	0	0.0	0	0.0
6.2 Other trade	597,179	18.2	612,594	19.2	499,302	15.0	478,173	14.5	744,521	19.3	612,221	16.7
6.3 Hotels	36,917	1.1	35,005	1.1	37,097	1.1	36,964	1.1	41,608	1.1	77,810	2.1
6.4 Restaurants	1,128	0.0	1,079	0.0	597	0.0	1,012	0.0	937	0.0	1,537	0.0
<b>7. Others</b>	<b>2,134,121</b>	<b>65.0</b>	<b>2,070,646</b>	<b>64.8</b>	<b>2,269,292</b>	<b>68.2</b>	<b>2,260,683</b>	<b>68.6</b>	<b>2,380,595</b>	<b>61.8</b>	<b>2,308,560</b>	<b>62.9</b>
7.1 Services	305,108	9.3	97,124	3.0	355,846	10.7	347,458	10.5	381,387	9.9	152,586	4.2
7.2 Personal	170,781	5.2	185,049	5.8	238,291	7.2	251,617	7.6	389,769	10.1	379,650	10.3
7.3 GOL	716,479	21.8	685,107	21.4	723,806	21.7	717,927	21.8	707,288	18.4	687,359	18.7
7.4 Central Bank of Liberia	780,313	23.8	746,146	23.3	784,781	23.6	781,890	23.7	769,537	20.0	747,854	20.4
7.5 Public Corporations	82,524	2.5	94,757	3.0	84,036	2.5	78,432	2.4	50,337	1.3	24,635	0.7
7.6 Others	78,916	2.4	262,462	8.2	82,533	2.5	83,360	2.5	82,277	2.1	316,476	8.6
<b>TOTAL</b>	<b>3,284,826</b>	<b>100.0</b>	<b>3,196,655</b>	<b>100.0</b>	<b>3,329,784</b>	<b>100.0</b>	<b>3,297,849</b>	<b>100.0</b>	<b>3,849,234</b>	<b>100.0</b>	<b>3,669,088</b>	<b>100.0</b>

*Source : Central Bank of Liberia, Monrovia, Liberia.*

**1.4b: Commercial Banks' Loans By Economic Sector -2007***Thousands of Liberian Dollars*

Sector	Jan-07		Feb-07		Mar-07		Apr-07		May-07		Jun-07	
	L\$	%	L\$	%	L\$	%	L\$	%	L\$	%	L\$	%
<b>1. Agriculture</b>	<b>293,970</b>	<b>6.9</b>	<b>292,253</b>	<b>7.1</b>	<b>291,506</b>	<b>6.8</b>	<b>312,954</b>	<b>7.6</b>	<b>305,410</b>	<b>6.8</b>	<b>306,542</b>	<b>6.6</b>
1.1 Rubber	32,587	0.8	32,387	0.8	15,535	0.4	39,038	0.9	40,182	0.9	38,307	0.8
1.2 Forestry	175,731	4.1	171,199	4.2	170,905	4.0	172,222	4.2	175,226	3.9	177,475	3.8
1.3 Fishery	9,472	0.2	9,443	0.2	82,758	1.9	11,842	0.3	11,253	0.3	10,983	0.2
1.4 Others	76,180	1.8	79,225	1.9	22,309	0.5	89,852	2.2	78,749	1.8	79,778	1.7
<b>2. Mining &amp; Quarrying</b>	<b>0</b>	<b>0.0</b>	<b>0</b>	<b>0.0</b>	<b>0</b>	<b>0.0</b>	<b>0</b>	<b>0.0</b>	<b>0</b>	<b>0.0</b>	<b>0</b>	<b>0.0</b>
2.1 Iron Ore	0	0.0	0	0.0	0	0.0	0	0.0	0	0.0	0	0.0
2.2 Quarrying	0	0.0	0	0.0	0	0.0	0	0.0	0	0.0	0	0.0
<b>3. Manufacturing</b>	<b>45,117</b>	<b>1.1</b>	<b>47,144</b>	<b>1.1</b>	<b>47,293</b>	<b>1.1</b>	<b>49,835</b>	<b>1.2</b>	<b>52,025</b>	<b>1.2</b>	<b>49,224</b>	<b>1.1</b>
<b>4. Construction</b>	<b>296,691</b>	<b>7.0</b>	<b>290,438</b>	<b>7.1</b>	<b>301,489</b>	<b>7.1</b>	<b>334,932</b>	<b>1.4</b>	<b>355,328</b>	<b>7.9</b>	<b>367,850</b>	<b>7.9</b>
4.1 Mortgage Loans	12,056	0.3	13,351	0.3	10,608	0.2	11,582	0.3	10,853	0.2	10,932	0.2
4.2 Home Improvement	13,933	0.3	15,228	0.4	14,823	0.3	19,510	0.5	19,741	0.4	19,941	0.4
4.3 Others	270,702	6.3	261,859	6.4	276,058	6.5	303,840	0.6	324,734	7.3	336,977	7.2
<b>5. Trans., Storage &amp; Comm.</b>	<b>152,214</b>	<b>3.6</b>	<b>150,695</b>	<b>3.7</b>	<b>148,374</b>	<b>3.5</b>	<b>141,179</b>	<b>3.4</b>	<b>136,922</b>	<b>3.1</b>	<b>130,201</b>	<b>2.8</b>
5.1 Transportation	71,646	1.7	66,247	1.6	65,818	1.5	65,169	1.6	63,865	1.4	67,639	1.4
5.2 Storage	0	0.0	0	0.0	0	0.0	0	0.0	0	0.0	0	0.0
5.3 Communication	80,568	1.9	84,448	2.1	82,556	1.9	76,009	1.8	73,057	1.6	62,562	1.3
<b>6. Trade, Hotel &amp; Rest.</b>	<b>646,061</b>	<b>15.1</b>	<b>681,114</b>	<b>16.6</b>	<b>665,606</b>	<b>15.6</b>	<b>543,191</b>	<b>13.2</b>	<b>623,611</b>	<b>13.9</b>	<b>559,485</b>	<b>12.0</b>
6.1 Diamond trade	0	0.0	0	0.0	0	0.0	0	0.0	0	0.0	0	0.0
6.2 Other trade	557,693	13.1	588,801	14.3	569,495	13.3	442,958	10.8	522,699	11.7	456,182	9.8
6.3 Hotels	85,618	2.0	89,394	2.2	92,716	2.2	94,318	2.3	98,259	2.2	96,177	2.1
6.4 Restaurants	2,750	0.1	2,919	0.1	3,396	0.1	5,914	0.1	2,653	0.1	7,126	0.2
<b>7. Others</b>	<b>2,833,531</b>	<b>66.4</b>	<b>2,644,545</b>	<b>64.4</b>	<b>2,822,097</b>	<b>66.0</b>	<b>3,010,006</b>	<b>73.2</b>	<b>3,002,907</b>	<b>67.1</b>	<b>3,260,267</b>	<b>69.8</b>
7.1 Services	162,503	3.8	374,168	9.1	429,959	10.1	485,444	11.8	698,155	15.6	731,678	15.7
7.2 Personal	437,444	10.3	436,547	10.6	558,163	13.1	601,862	14.6	611,440	13.7	630,076	13.5
7.3 GOL	738,104	17.3	732,772	17.8	730,738	17.1	735,684	17.9	744,352	16.6	754,246	16.1
7.4 Central Bank of Liberia	803,047	18.8	797,264	19.4	795,031	18.6	801,207	19.5	810,688	18.1	821,756	17.6
7.5 Public Corporations	120,538	2.8	209,211	5.1	133,117	3.1	287,117	7.0	42,164	0.9	53,983	1.2
7.6 Others	571,895	13.4	94,583	2.3	175,091	4.1	98,693	2.4	96,128	2.1	268,529	5.7
<b>TOTAL</b>	<b>4,267,583</b>	<b>100.0</b>	<b>4,106,189</b>	<b>100.0</b>	<b>4,276,364</b>	<b>100.0</b>	<b>4,112,792</b>	<b>100.0</b>	<b>4,476,203</b>	<b>100.0</b>	<b>4,673,570</b>	<b>100.0</b>

*Source: Central Bank of Liberia, Monrovia, Liberia.*

**1.4b: Commercial Banks' Loans By Economic Sector -2007 continued***Thousands of Liberian Dollars*

Sector	Jul-07		Aug-07		Sep-07		Oct-07		Nov-07		Dec-07	
	L\$	%	L\$	%	L\$	%	L\$	%	L\$	%	L\$	%
<b>1. Agriculture</b>	<b>301,757</b>	<b>6.7</b>	<b>324,985</b>	<b>6.5</b>	<b>303,838</b>	<b>6.0</b>	<b>299,863</b>	<b>5.7</b>	<b>173,171</b>	<b>4.4</b>	<b>207,324</b>	<b>4.9</b>
1.1 Rubber	36,460	0.8	34,089	0.7	33,730	0.7	28,687	0.5	25,965	0.7	24,728	0.6
1.2 Forestry	176,038	3.9	190,509	3.8	158,763	3.1	158,763	3.0	32,428	0.8	34,063	0.8
1.3 Fishery	8,977	0.2	93,787	1.9	8,947	0.2	8,947	0.2	8,827	0.2	8,757	0.2
1.4 Others	80,282	1.8	6,601	0.1	102,399	2.0	103,467	2.0	105,952	2.7	139,777	3.3
<b>2. Mining &amp; Quarrying</b>	<b>0</b>	<b>0.0</b>	<b>0</b>	<b>0.0</b>	<b>0</b>	<b>0.0</b>	<b>0</b>	<b>0.0</b>	<b>0</b>	<b>0.0</b>	<b>0</b>	<b>0.0</b>
2.1 Iron Ore	0	0.0	0	0.0	0	0.0	0	0.0	0	0.0	0	0.0
2.2 Quarrying	0	0.0	0	0.0	0	0.0	0	0.0	0	0.0	0	0.0
<b>3. Manufacturing</b>	<b>55,044</b>	<b>1.2</b>	<b>70,447</b>	<b>1.4</b>	<b>64,213</b>	<b>1.3</b>	<b>71,964</b>	<b>1.4</b>	<b>73,660</b>	<b>1.9</b>	<b>108,924</b>	<b>2.6</b>
<b>4. Construction</b>	<b>359,320</b>	<b>8.0</b>	<b>426,136</b>	<b>8.6</b>	<b>425,147</b>	<b>8.4</b>	<b>482,591</b>	<b>9.2</b>	<b>516,117</b>	<b>13.1</b>	<b>279,002</b>	<b>6.6</b>
4.1 Mortgage Loans	9,747	0.2	9,513	0.2	9,346	0.2	9,035	0.2	8,591	0.2	8,640	0.2
4.2 Home Improvement	17,360	0.4	17,500	0.4	16,851	0.3	15,006	0.3	13,923	0.4	14,625	0.3
4.3 Others	332,213	7.4	399,124	8.0	398,950	7.9	458,550	8.7	493,603	12.5	255,737	6.1
<b>5. Trans., Storage &amp; Comm.</b>	<b>130,166</b>	<b>2.9</b>	<b>180,428</b>	<b>3.6</b>	<b>196,529</b>	<b>3.9</b>	<b>200,556</b>	<b>3.8</b>	<b>217,126</b>	<b>5.5</b>	<b>218,403</b>	<b>5.2</b>
5.1 Transportation	67,095	1.5	110,209	2.2	149,089	3.0	151,484	2.9	162,623	4.1	172,589	4.1
5.2 Storage	0	0.0	0	0.0	0	0.0	0	0.0	0	0.0	0	0.0
5.3 Communication	63,071	1.4	70,219	1.4	47,441	0.9	49,072	0.9	54,504	1.4	45,814	1.1
<b>6. Trade, Hotel &amp; Rest.</b>	<b>582,787</b>	<b>13.0</b>	<b>672,830</b>	<b>13.5</b>	<b>721,970</b>	<b>14.3</b>	<b>732,064</b>	<b>14.0</b>	<b>782,771</b>	<b>19.8</b>	<b>916,321</b>	<b>21.8</b>
6.1 Diamond trade	0	0.0	6,563	0.1	6,519	0.1	6,581	0.1	7,081	0.2	7,500	0.2
6.2 Other trade	472,055	10.5	552,259	11.1	607,578	12.0	598,299	11.4	650,557	16.5	778,321	18.5
6.3 Hotels	105,834	2.4	107,133	2.2	100,862	2.0	12,177	0.2	116,030	2.9	120,625	2.9
6.4 Restaurants	4,898	0.1	6,875	0.1	7,011	0.1	115,007	2.2	9,104	0.2	9,875	0.2
<b>7. Others</b>	<b>3,064,524</b>	<b>68.2</b>	<b>3,291,239</b>	<b>66.3</b>	<b>3,340,742</b>	<b>66.1</b>	<b>3,454,179</b>	<b>65.9</b>	<b>2,185,650</b>	<b>55.4</b>	<b>2,469,000</b>	<b>58.8</b>
7.1 Services	748,121	16.6	859,227	17.3	998,137	19.8	1,115,872	21.3	1,313,268	33.3	1,292,412	30.8
7.2 Personal	621,959	13.8	718,612	14.5	659,125	13.0	651,766	12.4	641,648	16.3	669,657	15.9
7.3 GOL	748,092	16.6	754,125	15.2	742,059	14.7	753,823	14.4	70,584	1.8	70,750	1.7
7.4 Central Bank of Liberia	814,742	18.1	821,313	16.5	808,172	16.0	808,172	15.4	-	0.0	-	0.0
7.5 Public Corporations	36,279	0.8	34,188	0.7	32,643	0.6	32,672	0.6	32,572	0.8	329,194	7.8
7.6 Others	95,331	2.1	103,775	2.1	100,607	2.0	91,876	1.8	127,579	3.2	106,988	2.5
<b>TOTAL</b>	<b>4,493,598</b>	<b>100.0</b>	<b>4,966,064</b>	<b>100.0</b>	<b>5,052,438</b>	<b>100.0</b>	<b>5,241,215</b>	<b>100.0</b>	<b>3,948,493</b>	<b>100.0</b>	<b>4,198,972</b>	<b>100.0</b>

*Source: Central Bank of Liberia, Monrovia, Liberia.*

**1.4c: Commercial Banks' Loans By Economic Sector -2008***Thousands of Liberian Dollars*

Sector	Jan-08		Feb-08		Mar-08		Apr-08		May-08		Jun-08	
	L\$	%	L\$	%	L\$	%	L\$	%	L\$	%	L\$	%
<b>1. Agriculture</b>	<b>202,725</b>	<b>4.6</b>	<b>199,464</b>	<b>4.2</b>	<b>205,824</b>	<b>4.3</b>	<b>206,388</b>	<b>4.1</b>	<b>223,817</b>	<b>4.2</b>	<b>187,103</b>	<b>3.6</b>
1.1 Rubber	19,519	0.4	17,412	0.4	36,872	0.8	35,741	0.7	34,111	0.6	34,485	0.7
1.2 Forestry	34,608	0.8	34,608	0.7	34,133	0.7	34,373	0.7	48,108	0.9	45,974	0.9
1.3 Fishery	8,305	0.2	33,705	0.7	20,163	0.4	33,544	0.7	32,880	0.6	11,567	0.2
1.4 Others	140,293	3.2	113,740	2.4	114,655	2.4	102,730	2.0	108,719	2.0	95,077	1.8
<b>2. Mining &amp; Quarrying</b>	<b>0</b>	<b>0.0</b>	<b>0</b>	<b>0.0</b>	<b>0</b>	<b>0.0</b>	<b>0</b>	<b>0.0</b>	<b>0</b>	<b>0.0</b>	<b>0</b>	<b>0.0</b>
2.1 Iron Ore	0	0.0	0	0.0	0	0.0	0	0.0	0	0.0	0	0.0
2.2 Quarrying	0	0.0	0	0.0	0	0.0	0	0.0	0	0.0	0	0.0
<b>3. Manufacturing</b>	<b>110,281</b>	<b>2.5</b>	<b>152,655</b>	<b>3.2</b>	<b>151,638</b>	<b>3.2</b>	<b>157,871</b>	<b>3.1</b>	<b>150,764</b>	<b>2.8</b>	<b>134,932</b>	<b>2.6</b>
<b>4. Construction</b>	<b>318,137</b>	<b>7.2</b>	<b>511,999</b>	<b>10.9</b>	<b>504,507</b>	<b>10.5</b>	<b>591,920</b>	<b>11.7</b>	<b>603,981</b>	<b>11.4</b>	<b>629,578</b>	<b>12.1</b>
4.1 Mortgage Loans	8,542	0.2	8,833	0.2	8,698	0.2	8,675	0.2	8,218	0.2	7,453	0.1
4.2 Home Improvement	14,224	0.3	12,764	0.3	12,589	0.3	12,663	0.3	12,764	0.2	12,764	0.2
4.3 Others	295,371	6.7	490,403	10.4	483,220	10.1	570,582	11.3	583,000	11.0	609,362	11.7
<b>5. Trans., Storage &amp; Comm.</b>	<b>223,969</b>	<b>5.1</b>	<b>598,062</b>	<b>12.7</b>	<b>607,620</b>	<b>12.7</b>	<b>640,309</b>	<b>12.6</b>	<b>650,259</b>	<b>12.2</b>	<b>635,349</b>	<b>12.2</b>
5.1 Transportation	178,136	4.1	493,008	10.5	502,444	10.5	504,351	10.0	511,928	9.6	500,469	9.6
5.2 Storage	0	0.0	0	0.0	0	0.0	0	0.0	0	0.0	0	0.0
5.3 Communication	45,833		105,054	2.2	105,175	2.2	135,958	2.7	138,331	2.6	134,880	2.6
<b>6. Trade, Hotel &amp; Rest.</b>	<b>933,094</b>	<b>21.2</b>	<b>1,536,037</b>	<b>32.6</b>	<b>1,617,513</b>	<b>33.7</b>	<b>1,526,789</b>	<b>30.1</b>	<b>1,645,219</b>	<b>30.9</b>	<b>1,586,326</b>	<b>30.4</b>
6.1 Diamond trade	7,620	0.2	7,366	0.2	7,516	0.2	8,064	0.2	7,620	0.1	7,874	0.2
6.2 Other trade	793,330	18.0	1,386,410	29.4	1,455,541	30.4	1,351,319	26.7	1,440,101	27.1	1,380,374	26.5
6.3 Hotels	121,666	2.8	131,402	2.8	142,744	3.0	139,497	2.8	171,146	3.2	168,615	3.2
6.4 Restaurants	10,478	0.2	10,859	0.2	11,712	0.2	27,909	0.6	26,353	0.5	29,464	0.6
<b>7. Others</b>	<b>2,608,305</b>	<b>59.3</b>	<b>1,717,993</b>	<b>36.4</b>	<b>1,707,517</b>	<b>35.6</b>	<b>1,941,731</b>	<b>38.3</b>	<b>2,045,872</b>	<b>38.5</b>	<b>2,037,757</b>	<b>39.1</b>
7.1 Services	1,301,331	29.6	1,041,003	22.1	1,013,334	21.1	957,148	18.9	1,330,115	25.0	1,363,734	26.2
7.2 Personal	692,691	15.8	436,413	9.3	453,757	9.5	752,969	14.9	505,742	9.5	462,344	8.9
7.3 GOL	71,882	1.6	71,882	1.5	70,897	1.5	71,316	1.4	69,469	1.3	69,469	1.3
7.4 Central Bank of Liberia	0	0.0	0	0.0	0	0.0	0	0.0	0	0.0	0	0.0
7.5 Public Corporations	403,339	9.2	24,721	0.5	23,356	0.5	23,477	0.5	22,244	0.4	22,117	0.4
7.6 Others	139,063	3.2	143,975	3.1	146,173	3.0	136,821	2.7	118,302	2.2	120,093	2.3
<b>TOTAL</b>	<b>4,396,509</b>	<b>100.0</b>	<b>4,716,209</b>	<b>100.0</b>	<b>4,794,618</b>	<b>100.0</b>	<b>5,065,008</b>	<b>100.0</b>	<b>5,319,911</b>	<b>100.0</b>	<b>5,211,044</b>	<b>100.0</b>

*Source: Central Bank of Liberia, Monrovia, Liberia.*



**MONEY AND BANKING**

CENTRAL BANK OF LIBERIA

**1.5: Commercial Banks' Interest Rates - 2006-2008**

	<b>Jan-06</b>	<b>Feb-06</b>	<b>Mar-06</b>	<b>Apr-06</b>	<b>May-06</b>	<b>Jun-06</b>
Average Lending Rate	15.90	16.57	15.40	15.26	15.30	15.40
Average Personal Loan Rate	12.52	12.23	12.20	12.70	13.10	12.90
Average Mortgage Rate	12.00	12.00	12.00	12.00	12.00	12.00
Average Time Deposit Rate	3.20	3.00	3.23	3.50	2.80	3.50
Average Savings Rate	3.00	4.40	3.04	2.70	2.70	3.50
Average Rate on CDs	5.00	5.00	5.00	5.00	5.00	5.00

	<b>Jul-06</b>	<b>Aug-06</b>	<b>Sep-06</b>	<b>Oct-06</b>	<b>Nov-06</b>	<b>Dec-06</b>
Average Lending Rate	14.70	15.40	14.20	16.30	16.40	15.20
Average Personal Loan Rate	15.20	13.20	14.80	13.20	13.20	13.00
Average Mortgage Rate	12.00	12.00	12.00	12.00	12.00	12.00
Average Time Deposit Rate	3.40	3.40	3.00	3.50	4.00	4.90
Average Savings Rate	2.70	2.70	3.10	2.60	2.60	3.00
Average Rate on CDs	0.00	0.00	0.00	0.00	0.00	0.00

	<b>Jan-07</b>	<b>Feb-07</b>	<b>Mar-07</b>	<b>Apr-07</b>	<b>May-07</b>	<b>Jun-07</b>
Average Lending Rate	15.46	15.17	15.10	15.14	15.04	15.11
Average Personal Loan Rate	12.90	12.66	12.60	12.64	14.67	13.00
Average Mortgage Rate	12.00	12.00	12.00	12.00	12.00	12.00
Average Time Deposit Rate	4.00	2.25	3.94	3.50	3.76	3.77
Average Savings Rate	2.63	2.99	2.72	2.61	2.12	2.12
Average Rate on CDs	0.00	3.00	3.00	3.00	3.00	3.00

	<b>Jul-07</b>	<b>Aug-07</b>	<b>Sep-07</b>	<b>Oct-07</b>	<b>Nov-07</b>	<b>Dec-07</b>
Average Lending Rate	15.10	15.00	15.30	15.00	14.80	14.30
Average Personal Loan Rate	13.00	13.00	12.10	13.20	13.20	14.90
Average Mortgage Rate	12.00	12.00	12.00	12.00	12.00	12.00
Average Time Deposit Rate	3.90	3.90	4.00	3.60	4.30	4.30
Average Savings Rate	2.10	2.10	2.10	2.10	2.10	2.10
Average Rate on CDs	3.00	3.90	3.00	3.00	3.00	3.00

	<b>Jan-08</b>	<b>Feb-08</b>	<b>Mar-08</b>	<b>Apr-08</b>	<b>May-08</b>	<b>Jun-08</b>
Average Lending Rate	14.38	14.10	14.60	14.20	14.20	14.40
Average Personal Loan Rate	14.90	14.87	14.87	14.92	14.77	14.80
Average Mortgage Rate	12.00	12.00	12.00	12.00	12.00	12.00
Average Time Deposit Rate	4.35	4.20	4.10	4.00	3.90	4.20
Average Savings Rate	2.12	2.13	2.20	2.11	2.12	2.12
Average Rate on CDs	3.00	3.00	3.00	3.00	3.00	3.00

Note: CDs-Certificate of Deposits

Source: Central Bank of Liberia, Monrovia, Liberia.

**1.6: Liberian Dollar Exchange Rates - Period Averages-2006 - 2008***(Liberian dollar per US dollar)*

Period 2006	Large bills <sup>1</sup>		
	Buy	Sell	Middle <sup>2</sup>
Jan	56.15	57.40	56.78
Feb	56.04	57.38	56.71
Mar	55.52	56.57	56.05
Apr	56.30	57.32	56.81
May	57.19	58.13	57.66
Jun	58.06	59.12	58.59
Jul	58.81	59.94	59.38
Aug	59.19	60.19	59.69
Sep	59.23	60.21	59.72
Oct	59.00	60.00	59.50
Nov	57.81	58.90	58.36
Dec	56.27	57.56	56.91
Quarter 1	55.90	57.12	56.51
Quarter 2	57.18	58.19	57.69
Quarter 3	59.08	60.11	59.60
Quarter 4	57.69	58.82	58.26
Year	57.46	58.56	58.01

Period 2007	Large bills <sup>1</sup>		
	Buy	Sell	Middle <sup>2</sup>
Jan	60.57	61.65	61.11
Feb	60.21	61.13	60.67
Mar	60.00	61.01	60.51
Apr	60.40	61.54	60.97
May	61.22	62.17	61.69
Jun	62.02	63.00	62.51
Jul	60.77	61.71	61.24
Aug	61.91	62.91	62.41
Sep	61.12	62.12	61.62
Oct	61.13	62.15	61.64
Nov	59.65	60.67	60.16
Dec	60.27	61.27	60.77
Quarter 1	60.26	61.26	60.76
Quarter 2	61.21	62.24	61.72
Quarter 3	61.27	62.25	61.76
Quarter 4	60.35	61.36	60.86
Year	60.77	61.78	61.27

1. US dollar bank notes of denominations 5 and higher

2. Average of buying and selling rates

Source: Central Bank of Liberia, Monrovia, Liberia.

**1.6: Liberian Dollar Exchange Rates - Period Averages-2006-2008** continued*(Liberian dollar per US dollar)*

Period 2008	Large bills <sup>1</sup>		
	Buy	Sell	Middle <sup>2</sup>
Jan	62.96	64.00	63.48
Feb	62.20	63.20	62.70
Mar	62.00	63.01	62.50
Apr	62.06	63.08	62.57
May	62.78	63.56	63.17
Jun	63.00	64.00	63.50
Quarter 1	62.39	63.40	62.89
Quarter 2	62.61	63.55	63.08

**1.7: Liberian Dollar Exchange Rates - End of Period 2006-2008***(Liberian dollars per US dollar)*

Months	2006	2007	2008
Jan	57.50	61.25	63.50
Feb	56.75	60.50	62.50
Mar	56.75	60.50	62.63
Apr	57.50	61.50	63.00
May	58.00	62.50	63.50
Jun	59.50	62.50	63.50
Jul	59.50	62.00	
Aug	60.50	62.50	
Sep	59.50	61.50	
Oct	59.50	61.50	
Nov	57.00	59.50	
Dec	59.50	62.50	

1. US dollar bank notes of denominations 5 and higher.

2. Average of buying and selling rates.

*Source: Central Bank of Liberia, Monrovia, Liberia.*

**1.8: Liberian Dollar Exchange Rates May-Jun, 2008***(Liberian dollar per US dollar)*

Period	Large bills <sup>1</sup>			Period	Large bills <sup>1</sup>		
	Buy	Sell	Middle <sup>2</sup>		Buy	Sell	Middle <sup>2</sup>
<b>May</b>				<b>Jun</b>			
1	62.50	63.50	63.00	2	63.00	64.00	63.50
2	62.50	63.50	63.00	3	63.00	64.00	63.50
3	62.50	63.50	63.00	4	63.00	64.00	63.50
5	62.50	63.50	63.00	5	63.00	64.00	63.50
6	62.50	63.50	63.00	6	63.00	64.00	63.50
7	62.50	63.50	63.00	7	63.00	64.00	63.50
8	62.50	63.50	63.00	9	63.00	64.00	63.50
9	62.50	63.50	63.00	10	63.00	64.00	63.50
10	62.50	63.50	63.00	11	63.00	64.00	63.50
12	62.50	63.50	63.00	12	63.00	64.00	63.50
13	62.50	63.50	63.00	13	63.00	64.00	63.50
14	62.50	63.50	63.00	14	63.00	64.00	63.50
15	63.00	63.50	63.25	16	63.00	64.00	63.50
16	63.00	63.50	63.25	17	63.00	64.00	63.50
17	63.00	63.50	63.25	18	63.00	64.00	63.50
19	63.00	63.50	63.25	19	63.00	64.00	63.50
20	63.00	63.50	63.25	20	63.00	64.00	63.50
21	63.00	63.50	63.25	21	63.00	64.00	63.50
22	63.00	63.50	63.25	23	63.00	64.00	63.50
23	63.00	63.50	63.25	24	63.00	64.00	63.50
24	63.00	63.50	63.25	25	63.00	64.00	63.50
26	63.00	63.50	63.25	26	63.00	64.00	63.50
27	63.00	63.50	63.25	27	63.00	64.00	63.50
28	63.00	63.50	63.25	28	63.00	64.00	63.50
29	63.00	64.00	63.50	30	63.00	64.00	63.50
30	63.00	64.00	63.50				
31	63.00	64.00	63.50				
<b>Average</b>	<b>62.78</b>	<b>63.56</b>	<b>63.17</b>	<b>Average</b>	<b>63.00</b>	<b>64.00</b>	<b>63.50</b>

1. US dollar bank notes of denominations 5 and higher.

2. Average of buying and selling rates.

*Source: Central Bank of Liberia, Monrovia, Liberia.*

**MONEY AND BANKING**

CENTRAL BANK OF LIBERIA

**1.9: Commercial Banks' Inflows and Outflows-2006 - 2008**

*(Thousands of United States Dollars)*

**Commercial Banks' Inflows and Outflows-2006**

	<b>Jan-06</b>	<b>Feb-06</b>	<b>Mar-06</b>	<b>Apr-06</b>	<b>May-06</b>	<b>Jun-06</b>	<b>Jan-Jun Total</b>
Inflows	50,633	56,631	62,741	53,828	59,792	37,931	<b>321,556</b>
Outflows	49,054	46,605	52,238	46,015	53,916	27,300	<b>275,128</b>

	<b>Jul-06</b>	<b>Aug-06</b>	<b>Sep-06</b>	<b>Oct-06</b>	<b>Nov-06</b>	<b>Dec-06</b>	<b>Jul-Dec Total</b>
Inflows	62,416	56,954	44,946	57,551	54,617	86,941	<b>363,425</b>
Outflows	52,591	55,236	51,539	59,149	47,558	80,672	<b>346,745</b>

**Commercial Banks' Inflows and Outflows - 2007**

	<b>Jan-07</b>	<b>Feb-07</b>	<b>Mar-07</b>	<b>Apr-07</b>	<b>May-07</b>	<b>Jun-07</b>	<b>Jan-Jun Total</b>
Inflows	41,042	58,550	69,861	61,394	61,691	57,996	<b>350,534</b>
Outflows	48,252	29,126	59,902	59,719	69,154	33,580	<b>299,733</b>

	<b>Jul-07</b>	<b>Aug-07</b>	<b>Sep-07</b>	<b>Oct-07</b>	<b>Nov-07</b>	<b>Dec-07</b>	<b>Jul-Dec Total</b>
Inflows	59,715	68,870	59,911	76,947	74,691	62,132	<b>402,266</b>
Outflows	62,832	62,239	60,460	67,098	81,126	77,192	<b>410,947</b>

**Commercial Banks' Inflows and Outflows - 2008**

	<b>Jan-08</b>	<b>Feb-08</b>	<b>Mar-08</b>	<b>Apr-08</b>	<b>May-08</b>	<b>Jun-08</b>	<b>Jan-Jun Total</b>
Inflows	74,719	78,974	85,703	89,174	86,462	84,156	<b>499,188</b>
Outflows	89,800	61,007	71,576	59,002	58,945	95,368	<b>435,698</b>

Source: Central Bank of Liberia, Monrovia, Liberia.

**1.10a Central Bank of Liberia Fx Auction -2006**

<b>Auction No.</b>	<b>Date</b>	<b>FX Offered for sale by CBL(US\$)</b>	<b>Auction Rate L\$/US\$</b>	<b>Total Purchased US\$</b>	<b>No. of Accepted Bids</b>	<b>No. of Rejected Bids</b>	<b>Value of Rejected Bids(US\$)</b>	<b>Over/(Under) Subscription (US\$)</b>	<b>Total Value of Bids Submitted by Participating Banks/FX Bureaux(US\$)</b>
30	20-Jan-06	350,000	55.00	350,000	10	3	118,349	-181,871	531,871
31	3-Feb-06	400,000	56.00	400,000	14	5	174,500	-354,160	754,160
32	8-Feb-06	500,000	56.25	406,000	10	2	61,200	32,800	467,200
33	28-Feb-06	500,000	56.50	500,000	15	1	13,000	-161,920	661,920
34	14-Mar-06	400,000	56.00	236,640	6	2	100,000	63,360	336,640
35	4-Apr-06	400,000	56.50	239,210	9	0	0	160,790	239,210
36	19-Apr-06	200,000	56.50	200,000	6	7	319,000	-354,000	554,000
37	3-May-06	200,000	56.75	200,000	7	0	0	-42,000	242,000
38	18-May-06	200,000	57.50	200,000	14	5	216,000	-484,951	684,951
39	7-Jun-06	200,000	58.05	200,000	6	2	71,000	-87,956	287,956
40	21-Jun-06	200,000	58.50	200,000	8	2	100,000	-198,575	398,575
41	6-Jul-06	250,000	58.00	250,000	8	0	0	-32,400	282,400
42	21-Jul-06	250,000	59.45	250,000	8	6	223,000	-279,115	529,115
43	4-Aug-06	250,000	59.75	250,000	10	4	200,000	-289,900	539,900
44	18-Aug-06	250,000	60.00	250,000	8	1	50,000	-58,500	308,500
45	5-Sep-06	350,000	60.00	350,000	12	4	200,000	-327,500	677,500
46	25-Sep-06	350,000	59.75	350,000	10	4	154,500	-244,500	594,500
47	17-Oct-06	400,000	59.00	339,500	10	0	0	60,500	339,500
48	21-Nov-06	400,000	57.00	325,000	8	0	0	75,000	325,000
<b>Total</b>		<b>6,050,000</b>		<b>5,496,350</b>	<b>179</b>	<b>48</b>	<b>2,000,549</b>	<b>-2,704,898</b>	<b>8,754,898</b>

Source: Central Bank of Liberia, Monrovia, Liberia.

## MONEY AND BANKING

CENTRAL BANK OF LIBERIA

## 1.10b Central Bank of Liberia Fx Auction -2007

Auction No.	Date	FX Offered for sale by CBL (US\$)	Auction Rate L\$/US	Total Purchased US\$	No. of Accepted Bids	No. of Rejected Bids	Value of Rejected Bids (US\$)	Over/(Under) Subscription (US\$)	Total Value of Bids Submitted by Participating Banks/FX Bureaux (US\$)
49	8-Jan-07	400,000	59.75	292,519	8	2	100,000	7,481	392,519
50	24-Jan-07	400,000	58.50	302,330	7	10	433,000	-335,330	735,330
51	31-Jan-07	400,000	58.75	375,000	8	7	261,110	-236,110	636,110
52	7-Feb-07	400,000	58.50	379,000	9	10	440,000	-419,000	819,000
53	21-Feb-07	400,000	58.45	400,000	10	12	434,500	-451,500	851,500
54	7-Mar-07	400,000	58.50	400,000	15	10	500,000	-651,000	1,051,000
55	16-Mar-07	400,000	58.60	400,000	8	13	580,000	-580,000	980,000
56	21-Mar-07	400,000	58.61	311,500	7	11	490,000	-401,500	801,500
57	4-Apr-07	400,000	58.68	400,000	9	15	582,500	-617,500	1,017,500
58	18-Apr-07	400,000	58.75	400,000	12	13	625,000	-713,000	1,113,000
59	25-Apr-07	400,000	58.90	400,000	10	21	884,000	-919,000	1,319,000
60	2-May-07	400,000	59.00	400,000	10	22	1,031,000	-1,056,000	1,456,000
61	9-May-07	400,000	59.05	400,000	9	17	805,000	-825,000	1,225,000
62	23-May-07	400,000	59.07	400,000	9	26	1,149,000	-1,199,000	1,599,000
63	30-May-07	500,000	59.08	500,000	18	20	824,772	-1,107,772	1,607,772
64	6-Jun-07	500,000	59.10	500,000	21	23	1,047,800	-1,370,800	1,870,800
65	13-Jun-07	500,000	59.13	500,000	11	27	1,085,725	-1,110,725	1,610,725
66	20-Jun-07	1,000,000	59.60	1,000,000	23	15	542,500	-558,500	1,558,500
67	27-Jun-07	1,000,000	60.00	1,000,000	28	10	465,000	-496,920	1,496,920
68	4-Jul-07	500,000	60.01	500,000	17	7	265,576	-287,416	787,416
69	11-Jul-07	500,000	59.26	500,000	15	9	345,000	-371,440	871,440
70	18-Jul-07	500,000	59.62	500,000	17	12	569,000	-601,884	1,101,884
71	25-Jul-07	500,000	60.00	500,000	21	8	337,899	-400,724	900,724
72	1-Aug-07	500,000	60.23	500,000	16	14	412,700	-443,984	943,984
73	8-Aug-07	500,000	60.40	500,000	15	14	383,128	-416,367	916,367
74	15-Aug-07	700,000	60.30	700,000	22	9	254,269	-288,131	988,131
75	22-Aug-07	700,000	60.55	500,000	14	14	467,415	-297,434	997,434
76	29-Aug-07	500,000	60.87	500,000	10	19	458,237	-458,237	958,237
77	5-Sep-07	500,000	60.98	500,000	11	19	500,733	-503,183	1,003,183
78	12-Sep-07	500,000	60.96	500,000	17	9	295,060	-360,389	860,389
79	19-Sep-07	500,000	60.96	500,000	17	4	43,333	-52,513	552,513
80	26-Sep-07	500,000	61.04	500,000	12	8	166,244	-187,744	687,744
81	3-Oct-07	500,000	61.10	500,000	16	4	152,000	-209,430	709,430
82	10-Oct-07	500,000	61.04	500,000	14	7	190,370	-17,453	517,453
83	31-Oct-07	500,000	60.98	500,000	16	5	125,730	-171,198	671,198
84	7-Nov-07	500,000	60.10	500,000	15	0	0	-47,197	547,197
85	27-Dec-07	500,000	59.95	500,000	13	0	0	-45,000	545,000
<b>Total</b>		<b>18,500,000</b>		<b>17,960,349</b>	<b>510</b>	<b>446</b>	<b>17,247,601</b>	<b>-18,200,900</b>	<b>36,700,900</b>

Source: Central Bank of Liberia, Monrovia, Liberia.

**MONEY AND BANKING**

CENTRAL BANK OF LIBERIA

**1.10c Central Bank of Liberia Fx Auction -2008**

Auction No.	Date	FX Offered for sale by CBL (US\$)	Auction Rate L\$/US	Total Purchased US\$	No. of Accepted Bids	No. of Rejected Bids	Value of Rejected Bids (US\$)	Over/(Under) Subscription (US\$)	Total Value of Bids Submitted by Participating Banks/FX Bureaux (US\$)
86	3-Jan-08	500,000	61.10	500,000	12	7	254,861	-255,861	755,861
87	9-Jan-08	500,000	61.50	500,000	17	8	400,000	-480,673	980,673
88	16-Jan-08	500,000	61.80	500,000	14	17	560,925	-580,652	1,080,652
89	23-Jan-08	500,000	61.99	500,000	12	18	395,544	-426,657	926,657
90	30-Jan-08	500,000	62.19	500,000	14	13	418,600	-446,842	946,842
91	6-Feb-08	500,000	61.26	500,000	10	15	457,858	-457,858	957,858
92	13-Feb-08	500,000	61.19	500,000	17	11	479,802	-516,771	1,016,771
93	20-Feb-08	500,000	60.52	500,000	13	11	461,402	-490,902	990,902
94	27-Feb-08	500,000	60.51	500,000	14	12	422,808	-441,360	941,360
95	5-Mar-08	500,000	60.70	500,000	14	8	23,534	-259,434	759,434
96	13-Mar-08	500,000	60.66	500,000	11	8	266,544	-275,944	775,944
97	19-Mar-08	500,000	60.82	500,000	11	12	379,162	-388,162	888,162
98	26-Mar-08	500,000	60.99	500,000	11	11	382,350	-392,850	892,850
99	2-Apr-08	500,000	61.01	500,000	13	10	355,468	-448,468	948,468
100	9-Apr-08	500,000	61.10	500,000	11	13	3,954,371	-403,838	903,838
101	16-Apr-08	500,000	61.22	500,000	11	13	462,782	-443,933	943,933
102	23-Apr-08	500,000	61.28	500,000	12	13	357,861	-399,410	899,410
103	30-Apr-08	500,000	61.34	500,000	14	12	471,756	-541,649	1,041,649
104	7-May-08	500,000	61.44	500,000	15	13	461,300	-507,775	1,007,775
105	15-May-08	500,000	61.47	500,000	11	22	595,016	-617,716	1,117,716
106	21-May-08	500,000	61.56	500,000	17	15	453,452	-578,412	1,078,412
107	28-May-08	500,000	61.70	500,000	11	17	379,287	-504,247	1,004,247
108	4-Jun-08	500,000	61.72	500,000	13	14	346,278	-402,212	902,212
109	11-Jun-08	500,000	61.81	500,000	14	18	677,241	-692,041	1,192,041
110	18-Jun-08	500,000	61.83	500,000	11	16	469,203	-481,840	981,840
111	25-Jun-08	500,000	61.88	500,000	11	16	553,660	-575,420	1,075,420
<b>Total</b>		<b>13,000,000</b>		<b>13,000,000</b>	<b>334</b>	<b>343</b>	<b>14,441,067</b>	<b>-12,010,929</b>	<b>25,010,929</b>

Source: Central Bank of Liberia, Monrovia, Liberia.



**REAL SECTOR**

CENTRAL BANK OF LIBERIA

**2.1a: Harmonized Consumer Price Index (HCPI)-2006**

(December 2005=100)

Function	Weight (%)	Jan	Feb	Mar	Apr	May	Jun
Food & Non-alcoholic Beverages	45.2	98.8	97.3	98.6	98.5	101.8	103.1
Alcoholic Beverages, Tobacco & Narcotics	3.0	101.8	101.8	101.5	100.3	102.2	104.9
Clothing & Footwear	7.8	106.4	106.4	108.5	109.1	108.7	111.4
Housing, Water, Electricity, Gas & other fuels	12.0	99.2	99.2	99.7	100.0	99.9	100.1
Furnishings, Household Equipment & Routine Maintenance of the House	5.3	102.6	102.6	106.7	107.0	107.6	110.2
Health	3.9	100.0	100.0	100.0	100.0	100.0	100.0
Transport	6.1	100.0	100.0	99.9	99.8	99.9	99.9
Communication	1.5	72.4	72.4	93.4	93.0	93.0	93.0
Recreation & Culture	3.9	99.1	99.1	98.7	99.2	99.6	108.9
Education	3.2	100.0	100.0	100.0	100.0	100.0	100.0
Restaurants & Hotels	4.6	110.0	110.0	114.4	118.7	117.4	119.2
Miscellaneous Goods & Services	3.5	106.8	108.1	103.3	103.7	102.4	105.3
General Index		100.3	99.7	101.0	101.2	102.7	104.3

Function	Weight(%)	Jul	Aug	Sep	Oct	Nov	Dec
Food & Non-alcoholic Beverages	45.2	107.56	113.06	111.0	118.81	117.72	116.56
Alcoholic Beverages, Tobacco & Narcotics	3.03	106.93	105.63	107.10	103.25	109.30	108.95
Clothing & Footwear	7.75	112.57	114.08	116.90	113.61	112.64	114.96
Housing, Water, Electricity, Gas & other fuels	12.00	100.36	100.37	100.40	100.38	110.29	110.45
Furnishings, Household Equipment & Routine Maintenance of the House	5.25	110.06	110.99	111.20	110.61	111.49	111.15
Health	3.91	101.35	101.35	101.40	101.35	101.35	101.35
Transport	6.11	99.81	99.81	99.80	99.81	100.00	99.81
Communication	1.53	88.50	87.67	87.70	87.67	87.67	87.67
Recreation & Culture	3.85	110.70	110.87	110.90	110.88	110.70	109.77
Education	3.20	100.00	100.00	100.00	100.00	100.00	100.00
Restaurants & Hotels	4.64	119.49	119.87	121.70	117.92	116.77	115.08
Miscellaneous Goods & Services	3.53	107.91	109.18	109.20	109.46	107.59	106.51
General Index		106.64	109.30	108.70	111.69	112.43	111.91

The Harmonized Consumer Price Index (HCPI) is an amalgamation of the Classification of Individual Consumption by Purpose (COICOP), consisting of twelve functions (major groups), and the Monrovia Consumer Price Index (MCPI), together with its weights obtained from the 1964 limited expenditure survey.

The Survey sample comprised wage-earner and clerical-employee households of two or more persons with monthly income not exceeding US\$250.

Source: Liberia Institute for Statistics & Geo-Information Services (LISGIS) and Central Bank of Liberia (CBL), Monrovia, Liberia

**REAL SECTOR**

CENTRAL BANK OF LIBERIA

**2.1b: Harmonized Consumer Price Index (HCPI)-2007**

(December 2005=100)

Function	Weight (%)	Jan	Feb	Mar	Apr	May	Jun
Food & Non-alcoholic Beverages	45.20	116.02	116.23	116.51	122.87	118.51	126.83
Alcoholic Beverages, Tobacco & Narcotics	3.03	108.02	105.18	105.03	107.87	109.56	107.63
Clothing & Footwear	7.75	119.00	121.71	119.42	118.99	117.38	120.98
Housing, Water, Electricity, Gas & other fuels	12.00	110.15	110.04	109.99	110.03	108.96	109.34
Furnishings, Household Equipment & Routine Maintenance of the House	5.25	113.75	113.49	112.23	109.26	110.62	111.25
Health	3.91	100.34	100.00	100.00	100.00	100.00	100.00
Transport	6.11	99.64	100.35	100.17	100.17	100.17	101.90
Communication	1.53	85.98	83.36	83.34	83.41	83.51	83.51
Recreation & Culture	3.85	111.63	111.02	110.93	111.18	111.56	112.00
Education	3.20	100.00	100.00	100.00	100.00	100.00	100.00
Restaurants & Hotels	4.64	115.86	121.47	118.96	114.70	121.29	121.25
Miscellaneous Goods & Services	3.53	113.35	109.18	109.00	107.60	106.02	107.38
<b>General Index</b>		112.33	112.60	112.34	114.87	113.04	117.27

Function	Weight (%)	Jul	Aug	Sep	Oct	Nov	Dec
Food & Non-alcoholic Beverages	45.20	132.65	132.15	134.55	132.08	135.71	138.00
Alcoholic Beverages, Tobacco & Narcotics	3.03	111.29	111.39	110.78	110.34	110.78	109.92
Clothing & Footwear	7.75	121.12	122.46	121.38	118.89	117.38	121.17
Housing, Water, Electricity, Gas & other fuels	12.00	109.25	109.33	109.63	109.62	113.05	113.27
Furnishings, Household Equipment & Routine Maintenance of the House	5.25	114.36	115.05	118.64	121.35	117.95	117.90
Health	3.91	100.00	100.00	100.00	100.00	100.00	100.00
Transport	6.11	102.19	102.19	121.79	121.38	123.28	125.04
Communication	1.53	82.13	82.28	82.18	78.69	78.52	78.90
Recreation & Culture	3.85	111.32	111.95	112.14	112.70	111.37	115.12
Education	3.20	100.00	100.00	100.00	100.00	100.00	100.00
Restaurants & Hotels	4.64	120.77	121.21	121.76	121.72	121.33	121.51
Miscellaneous Goods & Services	3.53	106.49	108.50	107.32	107.21	106.34	114.73
<b>General Index</b>		120.09	120.13	122.53	121.28	123.07	124.96

The Harmonized Consumer Price Index (HCPI) is an amalgamation of the Classification of Individual Consumption by Purpose (COICOP), consisting of twelve functions (major groups), together with the Monrovia Consumer Price Index (MCPI) and its weights obtained from the 1964 limited expenditure survey.

The Survey sample comprised wage-earner and clerical-employee households of two or more persons with monthly income not exceeding US\$250.

Source: Liberia Institute for Statistics & Geo-Information Services (LISGIS) and Central Bank of Liberia (CBL), Monrovia, Liberia

**2.1c: Harmonized Consumer Price Index (HCPI) - 2008**

Function	Weight (%)	Jan	Feb	Mar	Apr	May	Jun
Food & Non-alcoholic Beverages	45.20	148.82	144.88	142.69	142.16	149.66	167.20
Alcoholic Beverages, Tobacco & Narcotics	3.03	112.91	107.70	111.59	112.85	114.43	114.52
Clothing & Footwear	7.75	122.13	122.57	120.78	120.56	122.05	122.73
Housing, Water, Electricity, Gas & other fuels	12.00	114.44	115.08	115.98	116.33	119.27	119.86
Furnishings, Household Equipment & Routine Maintenance of the House	5.25	124.43	126.26	126.04	127.43	128.04	128.40
Health	3.91	100.00	100.00	102.03	100.00	100.34	101.01
Transport	6.11	125.98	129.13	126.39	127.74	169.27	171.60
Communication	1.53	83.05	82.95	80.62	82.93	83.01	80.75
Recreation & Culture	3.85	116.57	116.15	121.36	121.40	121.72	120.98
Education	3.20	100.00	100.00	100.00	100.00	100.00	100.00
Restaurants & Hotels	4.64	122.28	122.06	122.00	122.02	122.20	122.29
Miscellaneous Goods & Services	3.53	119.07	117.46	117.37	117.62	115.20	116.69
<b>General Index</b>	<b>100.00</b>	<b>130.86</b>	<b>129.24</b>	<b>128.39</b>	<b>128.34</b>	<b>134.77</b>	<b>143.00</b>

The Harmonized Consumer Price Index (HCPI) is an amalgamation of the Classification of Individual Consumption by Purpose (COICOP), consisting of twelve functions (major groups) together with the Monrovia Consumer Price Index (MCPI) and its weights obtained from the 1964 limited expenditure survey.

The Survey sample comprised wage-earner and clerical-employee households of two or more persons with monthly income not exceeding US\$250.

*Source* : Liberia Institute for Statistics & Geo-Information Services (LISGIS) and Central Bank of Liberia (CBL), Monrovia, Liberia

**REAL SECTOR**

*CENTRAL BANK OF LIBERIA*

**2.2a: MCPI Inflation Rate 2006 (Year-on-Year)**

<b>GROUPING</b>	<b>FOOD</b>	<b>DRINKS</b>	<b>FUEL</b>	<b>CLOTHING</b>	<b>HOUSEHOLD</b>	<b>PERSONAL</b>	<b>RENT</b>	<b>MISC</b>	<b>ALL ITEMS</b>
	<b>32 (34.4%)</b>	<b>6 (5.7%)</b>	<b>3 (5.0%)</b>	<b>14 (13.8%)</b>	<b>7 (6.1%)</b>	<b>9 (11.4%)</b>	<b>1 (14.9%)</b>	<b>7 (8.7%)</b>	<b>79 (100%)</b>
<b>REFERENCE PERIOD</b>									
<b>January</b>	13.3	2.3	-2.8	4.2	-2.1	16.9	0.7	6.0	7.2
<b>February</b>	12.6	0.9	-2.8	4.2	-0.4	17.1	0.7	6.1	7.1
<b>March</b>	10.9	2.0	-4.7	4.1	0.3	17.1	0.7	5.3	6.4
<b>April</b>	12.8	4.8	-5.3	4.1	0.9	18.1	0.7	6.1	7.4
<b>May</b>	14.7	4.6	-2.0	5.8	-0.9	18.5	0.7	7.0	8.4
<b>June</b>	8.9	6.4	-2.0	4.8	-1.3	18.3	0.7	8.0	6.8
<b>July</b>	11.2	1.8	-3.0	3.6	-1.3	18.5	0.7	7.9	7.0
<b>August</b>	11.4	0.7	6.1	3.7	-1.6	18.5	0.0	10.9	8.0
<b>September</b>	10.1	-0.3	5.6	4.5	-1.6	18.4	0.0	6.8	7.2
<b>October</b>	12.5	0.7	11.7	4.7	-2.8	0.0	0.0	6.0	5.8
<b>November</b>	11.7	1.8	13.1	4.6	-3.1	3.8	13.6	5.0	8.1
<b>December</b>	14.1	4.5	11.7	5.4	-3.7	3.8	13.6	3.5	8.9

1. The commodity groupings were derived from a Household Expenditure Survey conducted in Monrovia during October- December, 1963.

The Survey sample comprised wage-earner and clerical-employee households of two or more persons with monthly income not exceeding US\$250.

2. The original weights based on the 1963 Survey were later revised using a limited Survey conducted in June, 1964.

*Source : Ministry of Planning and Economic Affairs and the Central Bank of Liberia, Monrovia, Liberia*

**REAL SECTOR**

CENTRAL BANK OF LIBERIA

**2.2b: HCPI Inflation Rate - 2007 (Year-on-Year)**

Function	Weight (%)	Jan	Feb	Mar	Apr	May	Jun
Food & Non-alcoholic Beverages	45.20	17.41	19.46	18.14	24.81	16.44	23.03
Alcoholic Beverages, Tobacco & Narcotics	3.03	6.11	3.33	3.52	7.58	7.24	2.56
Clothing & Footwear	7.75	11.81	14.36	10.12	9.12	7.99	8.64
Housing, Water, Electricity, Gas & other fuels	12.00	11.08	10.96	10.34	10.02	9.11	9.19
Furnishings, Household Equipment & Routine Maintenance of the House	5.25	10.83	10.58	5.21	2.10	2.82	0.96
Health	3.91	0.34	0.00	0.00	0.00	0.00	0.00
Transport	6.11	-0.36	0.35	0.31	0.38	0.24	2.04
Communication	1.53	18.81	15.19	-10.80	-10.27	-10.20	-10.20
Recreation & Culture	3.85	12.61	11.99	12.34	12.14	12.01	2.80
Education	3.20	0.00	0.00	0.00	0.00	0.00	0.00
Restaurants & Hotels	4.64	5.34	10.44	4.00	-3.33	3.34	1.69
Miscellaneous Goods & Services	3.53	6.09	1.00	5.57	3.75	3.53	2.02
<b>General Rate of Inflation</b>	<b>100.00</b>	<b>11.99</b>	<b>12.98</b>	<b>11.21</b>	<b>13.49</b>	<b>10.08</b>	<b>12.45</b>

Function	Weight (%)	Jul	Aug	Sep	Oct	Nov	Dec
Food & Non-alcoholic Beverages	45.20	23.33	16.89	21.26	11.17	15.28	18.40
Alcoholic Beverages, Tobacco & Narcotics	3.03	4.08	5.45	3.47	6.87	1.36	0.89
Clothing & Footwear	7.75	7.59	7.34	3.83	4.64	4.20	5.41
Housing, Water, Electricity, Gas & other fuels	12.00	8.85	8.93	9.22	9.20	2.50	2.56
Furnishings, Household Equipment & Routine Maintenance of the House	5.25	3.91	3.66	6.67	9.70	5.79	6.07
Health	3.91	-1.33	-1.33	-1.33	-1.33	-1.33	-1.33
Transport	6.11	2.38	2.38	22.02	21.61	23.29	25.27
Communication	1.53	-7.20	-6.14	-6.26	-10.24	-10.44	-10.00
Recreation & Culture	3.85	0.56	0.98	1.14	1.64	0.06	4.87
Education	3.20	0.00	0.00	0.00	0.00	0.00	0.00
Restaurants & Hotels	4.64	1.08	1.12	0.07	3.22	3.91	5.58
Miscellaneous Goods & Services	3.53	-1.31	-0.63	-1.72	-2.05	-1.17	7.72
<b>General Rate of Inflation</b>	<b>100.00</b>	<b>12.62</b>	<b>9.91</b>	<b>12.71</b>	<b>8.59</b>	<b>9.46</b>	<b>11.66</b>

The Harmonized Consumer Price Index (HCPI) is an amalgamation of the Classification of Individual Consumption by Purpose (COICOP), consisting of twelve functions (major groups), together the Monrovia Consumer Price Index (MCPI) and its weights obtained from the 1964 limited expenditure survey.

The Survey sample comprised wage-earner and clerical-employee households of two or more persons with monthly income not exceeding US\$250.

Source : Liberia Institute for Statistics & Geo-Information Services (LISGIS) and Central Bank of Liberia (CBL), Monrovia, Liberia

**2.2c: HCPI Inflation Rate - 2008 (Year-on-Year)**

Function	Weight (%)	Jan	Feb	Mar	Apr	May	Jun
<b>Food &amp; Non-alcoholic Beverages</b>	45.20	28.27	24.65	22.46	15.70	26.29	31.83
<b>Alcoholic Beverages, Tobacco &amp; Narcotics</b>	3.03	4.53	2.39	6.24	4.62	4.44	6.41
<b>Clothing &amp; Footwear</b>	7.75	2.62	0.71	1.14	1.32	3.98	1.45
<b>Housing, Water, Electricity, Gas &amp; other fuels</b>	12.00	3.89	4.58	5.44	5.73	9.46	9.62
<b>Furnishings, Household Equipment &amp; Routine Maintenance of the House</b>	5.25	9.39	11.25	12.30	16.62	15.75	15.42
<b>Health</b>	3.91	-0.34	0.00	2.03	0.00	0.34	1.01
<b>Transport</b>	6.11	26.44	28.68	26.18	27.52	68.99	68.40
<b>Communication</b>	1.53	-3.41	-0.49	-3.26	-0.57	-0.60	-3.31
<b>Recreation &amp; Culture</b>	3.85	4.43	4.62	9.41	9.19	9.11	8.02
<b>Education</b>	3.20	0.00	0.00	0.00	0.00	0.00	0.00
<b>Restaurants &amp; Hotels</b>	4.64	5.54	0.49	2.55	6.39	0.75	0.86
<b>Miscellaneous Goods &amp; Services</b>	3.53	5.05	7.59	7.69	9.32	8.66	8.67
<b>General Rate of Inflation</b>	100.00	16.50	14.78	14.28	11.72	19.22	21.95

The Harmonized Consumer Price Index (HCPI) is an amalgamation of the Classification of Individual Consumption by Purpose (COICOP), consisting of twelve functions (major groups) together the Monrovia Consumer Price Index (MCPI) and its weights, obtained from the 1964 limited expenditure survey.

The Survey sample comprised wage-earner and clerical-employee households of two or more persons with monthly income not exceeding US\$250.

*Source : Liberia Institute for Statistics & Geo-Information Services (LISGIS) and Central Bank of Liberia (CBL), Monrovia, Liberia*

**REAL SECTOR**

CENTRAL BANK OF LIBERIA

**2.3a: Key Output Volume-2006**

Commodity	Unit	Jan-06	Feb-06	Mar-06	Apr-06	May-06	Jun-06	Jan-Jun Total
<b>Agriculture</b>								
Rubber*	Mt.	3,669	6,640	9,945	1,829	16,142	3,649	41,874
Cocoa Beans	Mt.	43	0	131	0	-	-	174
Coffee	Mt.	-	-	11	0	-	-	11
Round Logs**	M3	-	-	-	-	-	-	-
Sawn Timber	M3	-	-	-	-	-	-	-
Fish***	Kg.	42,442	59,805	90,671	64,306	74,825.00	74,826	406,875
<b>Mining</b>								
Gold	Ounces	0	0	43	32	11	194	280
Diamond**	Carat	-	-	-	-	-	-	-
<b>Manufacturing</b>								
Cement	Mt.	12,900	15,118	11,320	10,895	17,810	13,825	81,868
Spirit	Litre	9,712	15,252	19,903	28,056	29,417	34,493	136,833
Beer	Litre	308,951	512,481	566,703	535,704	478,660	517,671	2,920,170
Stout	Litre	190,927	99,523	233,822	169,836	261,297	208,241	1,163,645
Malta	Litre	88,324	66,306	20,339	34,492	50,435	50,704	310,599
Soft Drink	Litre	787,025	644,803	760,025	658,915	903,830	580,464	4,335,062
Oil Paint	Gal.	3,200	2,560	2,800	2,380	2,144	2,036	15,120
Water Paint	Gal.	4,200	3,240	3,120	930	3,670	3,325	18,485
Varnish	Gal.	800	640	700	595	536	509	3,780
Manoline Hair Grease	Kg.	0	0	0	840	0	0	840
Thinner	Gal.	375	318	278	290	350	210	1,821
Rubbing Alcohol	Litre	13,484	16,855	17,979	13,484	14,608	30,339	106,749
Powder Soap	Kg.	12,128	13,125	15,750	2,625	42,000	0	85,628
Chlorox	Litre	15,987	13,910	52,990	52,990	64,250	51,665	251,793
Nail	Kg.	n.a.	n.a.	n.a.	n.a.	n.a.	n.a.	0
Candle	Kg.	26,250	12,600	47,250	51,450	33,600	84,000	255,150
Mattresses	Pcs.	6,510	5,970	10,212	8,016	9,259	7,059	47,026
Deep Well Water <sup>1</sup>	Gal.	4,756,671	4,191,585	4,979,822	6,743,046	5,804,937	6,719,560	33,195,621
Finished Water <sup>2</sup>	Gal.	52,793,561	58,132,454	50,378,977	45,180,889	31,548,368	43,735,700	281,769,949

1: Water from drilled wells

2: Water from White Plains Treatment Plant

\* Revised

\*\* Placed under United Nations ban

\*\*\*Estimates

Sources: Ministries of Planning & Economic Affairs; Lands, Mines & Energy; Commerce & Industry; and Forestry Development Authority (FDA);

Liberia Produce Marketing Corporation (LPMC); Bridgeway Corporation, and Liberia Water & Sewer Corporation (LWSC), Monrovia, Liberia

**REAL SECTOR**

CENTRAL BANK OF LIBERIA

**2.3a: Key Output Volume-2006-continued**

Commodity	Unit	Jul-06	Aug-06	Sep-06	Oct-06	Nov-06	Dec-06	Jul-Dec Total	Grand Total
<b>Agriculture</b>									
Rubber*	Mt.	11,873	8,344	11,607	8,467	8,354	3,014	51,659	<b>93,533</b>
Cocoa Beans	Mt.	0	0	0	0	374*	560*	934	<b>1,108</b>
Coffee	Mt.	0	0	0	0	0	0	0	<b>11</b>
Round Logs**	M3	-	-	-	-	-	-	-	-
Sawn Timber	M3	-	-	-	-	-	-	-	-
Fish***	Kg.	81,230	69,056	66,027	76,431	76,100	76,331	445,175	<b>852,050</b>
<b>Mining</b>									
Gold	Ounces	0	2	0	0	22	0	24	<b>304</b>
Diamond**	Carat								
<b>Manufacturing</b>									
Cement	Mt.	4,210	7,933	-	4,820	16,131	14,452	47,546	<b>129,414</b>
Spirit	Litre	37,746	29,798	30,433	21,276	41,812	45,993	207,058	<b>343,891</b>
Beer	Litre	528,415	315,120	520,799	363,925	484,635	555,767	2,768,661	<b>5,688,831</b>
Stout	Litre	157,663	148,080	199,196	195,323	195,711	304,603	1,200,576	<b>2,364,221</b>
Malta	Litre	88,411	-	87,476	-	78,701	81,235	335,823	<b>646,422</b>
Soft Drink	Litre	617,594	640,750	594,670	523,476	701,878	819,014	3,897,382	<b>8,232,444</b>
Oil Paint	Gal.	2,240	2,048	2,100	3,320	3,400	4,288	17,396	<b>32,516</b>
Water Paint	Gal.	3,400	2,875	2,745	5,050	5,675	6,960	26,705	<b>45,190</b>
Varnish	Gal.	560	512	525	865	896	1,072	4,431	<b>8,211</b>
Manoline Hair Grease	Kg.	-	-	-	-	-	-	-	<b>840</b>
Thinner	Gal.	400	250	315	425	385	485	2,260	<b>4,081</b>
Rubbing Alcohol	Litre	21,350	41,576	13,484	-	-	8,989	85,399	<b>192,148</b>
Powder Soap	Kg.	-	-	3,533	7,534	5,250	-	16,317	<b>101,945</b>
Chlorox	Litre	29,807	129,428	26,760	106,642	52,990	63,588	409,215	<b>661,008</b>
Nail	Kg.	n.a.	n.a.	n.a.	n.a.	n.a.	n.a.	na	-
Candle	Kg.	52,605	47,250	52,185	52,500	42,000	79,800	326,340	<b>581,490</b>
Mattresses	Pcs.	8,900	7,211	7,096	6,511	9,752	11,341	50,811	<b>97,837</b>
Deep Well Water1	Gal.	3,872,185	1,722,278	2,250,187	309,871	6,016,599***	7,353,621***	21,524,741	<b>54,720,362</b>
Finished Water2	Gal.	60,334,705	78,261,314	62,211,231	75,029,035	38,623,514***	47,206,517***	361,666,316	<b>643,436,265</b>

1: Water from drilled wells

2: Water from White Plains Treatment Plant

\* Revised

\*\* Placed under United Nations ban

\*\*\*Estimates

Sources: Ministries of Planning & Economic Affairs; Lands, Mines & Energy; Commerce & Industry; and Liberia Institute of Statistics & Geo-Information Services (LISGIS); Forestry Development Authority (FDA); Liberia Produce Marketing Corporation (LPMC); Bridgeway Corporation, and Liberia Water & Sewer Corporation (LWSC), Monrovia, Liberia



**REAL SECTOR**

CENTRAL BANK OF LIBERIA

**2.3b: Key Output Volume-2007**

Commodity	Unit	Jan-07	Feb-07	Mar-07	Apr-07	May-07	Jun-07	Jan-Jun Total
<b>Agriculture</b>								
Rubber	Mt.	9,394	15,183	11,768	2,538*	13,488	12,833	65,204
Cocoa Beans**	Mt.	559	211	189	320	250	149	1,678
Coffee	Mt.	0	0	0	0	0	0	0
Round Logs	M3	-	-	-	-	-	-	-
Sawn Timber	Pcs.	55,971	46,689	47,681	58,354	49,458	43,355	301,508
Fish	Kg.	-	-	-	-	-	-	-
<b>Mining</b>								
Gold	Ounces	324	300	0	1,170	907	375	3,076
Diamond	Carat	-	-	-	-	-	-	-
<b>Manufacturing</b>								
Cement	Mt.	10,385	12,425	8,675	9,851	11,202	15,900	68,438
Spirit	Litre	57,512	82,220	73,727	66,296	71,027	73,411	424,193
Beer	Litre	606,420	509,081	673,959	401,322	734,532	620,873	3,546,187
Stout	Litre	208,874	206,862	318,471	227,407	276,123	201,295	1,439,032
Malta	Litre	53,721	89,306	52,945	68,262	105,748	52,771	422,753
Soft Drink	Litre	820,593	754,517	858,982	886,788	943,654	769,694	5,034,228
Oil Paint	Gal.	3,616	2,867	3,192	2,428	2,016	1,914	16,033
Water Paint	Gal.	4,620	3,476	3,406	3,958	3,384	3,211	22,055
Varnish	Gal.	904	717	798	607	504	478	4,008
Manoline Hair Grease	Kg.	-	-	-	-	-	-	-
Thinner	Gal.	398	324	343	296	332	195	1,888
Rubbing Alcohol	Litre	49,891	31,148	8,989	40,452	75,825	22,473	228,778
Powder Soap	Kg.	11,288	8,668	10,395	6,930	11,540	7,077	55,898
Chlorox	Litre	52,990	39,743	79,485	71,563	27,687	41,359	312,827
Nail	Kg.	n.a.	n.a.	n.a.	na	na	na	na
Candle	Kg.	56,700	48,510	33,023	31,605	33,600	11,204	214,642
Mattresses	Pcs.	9,710	9,201	9,175	9,805	10,176	10,054	58,121
Deep Well Water1	Gal.	4,175,819	4,145,607	4,362,524	4,356,025	5,567,607	4,521,516**	27,129,098
Finished Water2	Gal.	50,617,302	41,762,741	81,179,198	85,788,415	61,619,561	64,193,443**	385,160,660

1: Water from drilled wells

2: Water from White Plains Treatment Plant

\* Revised

\*\* Estimates

Sources: Ministries of Planning & Economic Affairs; Lands, Mines & Energy; Commerce & Industry; and Liberia Institute of Statistics & Geo-Information Services (LISGIS); Forestry Development Authority (FDA); Liberia Produce Marketing Corporation (LPMC); Bridgeway Corporation, and Liberia Water & Sewer Corporation (LWSC), Monrovia, Liberia

**REAL SECTOR**

**2.3b: Key Output Volume-2007 - continued**

Commodity	Unit	Jul-07	Aug-07	Sep-07	Oct-07	Nov-07	Dec-07	Jul-Dec Total	Grand Total
<b>Agriculture</b>									
Rubber	Mt.	12,196	4,276	18,480	5,419	8,584	6,612	55,567	120,771
Cocoa Beans*	Mt.	105	94	86	145	342	652	1,424	3,102
Coffee	Mt.	0	0	0	0	0	0	0	0
Round Logs	M3	-	-	-	-	-	-	-	-
Sawn Timber	Pcs.	62,950	43,387	47,461	62,389	59,794	45,121	321,102	622,610
Fish	Kg.	-	-	-	-	-	-	-	-
<b>Mining</b>									
Gold	Ounces	970	671	1,274	1,256	1,067	1,501	6,739	75,177
Diamond	Carat	-	-	2,886	11,746	2,466	4,601	21,699	21,699
<b>Manufacturing</b>									
Cement	Mt.	11,776	15,850	13,728	11,476	2,442	7,958	63,230	131,668
Spirit	Litre	93,484	91,072	96,638	96,444	104,673	126,914	609,225	1,033,418
Beer	Litre	623,273	308,126	606,353	279,636	615,225	751,029	3,183,642	6,729,829
Stout	Litre	305,150	271,014	176,838	269,177	364,185	342,778	1,729,142	3,168,174
Malta	Litre	52,597	67,185	103,950	53,325	91,270	88,870	457,197	879,950
Soft Drink	Litre	681,977	638,604	527,393	790,373	657,526	434,851	3,730,724	8,764,952
Oil Paint	Gal.	2,307	2,007	2,109	3,386	3,298	4,931	18,038	34,071
Water Paint	Gal.	3,467	2,923	2,812	5,174	5,677	8,973	29,026	51,081
Varnish	Gal.	577	502	527	847	824	1,233	4,510	8,518
Manoline Hair Grease	Kg.	4,200	3,830	5,040	6,451	3,360	4,368	27,249	27,249
Thinner	Gal.	380	238	321	416	404	486	2,245	4,133
Rubbing Alcohol	Litre	-	17,979	17,979	40,003	29,440	18,114	123,515	352,293
Powder Soap	Kg.	9,450	7,875	4,200	14,117	7,613	7,928	51,183	107,081
Chlorox	Litre	32,827	39,743	44,379	79,750	25,965	35,159	257,823	570,650
Nail	Kg.	na	na	na	na	na	na	na	na
Candle	Kg.	39,900	31,500	52,500	42,000	48,069	29,400	243,369	458,011
Mattresses	Pcs.	9,780	7,136	6,334	6,928	9,511	9,440	49,129	107,250
Deep Well Water1*	Gal.	6,646,629	2,984,201	3,933,719	282,143	6,207,137	7,617,850	27,671,679	54,800,777
Finished Water2*	Gal.	57,774,099	75,106,329	59,699,902	95,943,521	48,992,436	59,199,193	396,715,480	781,876,140

1: Water from drilled wells

2: Water from White Plains Treatment Plant

\* Estimates

Sources: Ministries of Planning & Economic Affairs; Lands, Mines & Energy; Commerce & Industry; and Liberia

Institute of Statistics & Geo-Information Services (LISGIS); Forestry Development Authority (FDA); Liberia

Produce Marketing Corporation (LPMC); Bridgeway Corporation, and Liberia Water & Sewer Corporation (LWSC), Monrovia, Liberia

**REAL SECTOR**

CENTRAL BANK OF LIBERIA

**2.3c: Key Output Volume- 2008**

Commodity	Unit	Jan-08	Feb-08	Mar-08	Apr-08	May-08	Jun-08	Jan-Jun Total
<b>Agriculture</b>								
Rubber	Mt.	10,224	8,409	8,752	5,751	10,782	6,167	50,085
Cocoa Beans	Mt.	733	383	168	141	50	73	1,548
Coffee	Mt.	-	-	-	18	-	-	18
Round Logs	M3	-	-	-	-	-	-	-
Sawn Timber	Pcs.	78,854	99,881	107,472	112,588	84,544	92,600	575,939
Fish	Kg.	-	-	-	-	-	-	-
<b>Mining</b>								
Gold	Ounces	1,963	1,816	1,815	1,647	1,811	1,659	10,711
Diamond	Carat	2,429	5,239	4,647	5,112	3,362	4,348	25,137
<b>Manufacturing</b>								
Cement	Mt.	10,343	13,337	12,658	225	10,969	7,197	54,729
Spirit	Litre	100,962	92,726	105,750	80,989	80,989	76,021	537,437
Beer	Litre	645,450	655,889	578,224	811,933	613,659	708,690	4,013,845
Stout	Litre	203,813	275,062	261,384	306,544	258,715	210,894	1,516,412
Malta	Litre	137,618	89,187	52,668	117,794	68,643	83,057	548,967
Soft Drink	Litre	229,097	173,786	140,062	231,991	391,975	354,456	1,521,367
Oil Paint	Gal.	4,158	5,038	436	120	340	572	10,664
Water Paint	Gal.	6,765	6,055	6,150	2,170	7,650	6,225	35,015
Varnish	Gal.	1,040	1,260	109	84	480	420	3,393
Manoline Hair Grease	Kg.	3,570	5,704	2,495	2,041	4,704	4,721	23,235
Thinner	Gal.	410	-	95	75	80	115	775
Rubbing Alcohol	Litre	-	31,463	9,439	-	-	-	40,902
Powder Soap	Kg.	8,085	9,450	10,505	15,750	10,715	14,690	69,195
Chlorox	Litre	45,042	42,392	19,368	41,756	47,082	38,974	234,614
Nail	Kg.	na	na	na	na	na	na	-
Candle	Kg.	33,600	40,541	28,350	21,893	19,845	27,489	171,718
Mattresses	Pcs.	8,901	9,973	9,497	10,207	10,149	9,688	58,415
Deep Well Water1*	Gal.	4,590,322	4,562,416	4,799,607	6,976,173	na	na	20,928,518
Finished Water2*	Gal.	54,733,642	44,986,555	87,723,783	62,481,327	na	na	249,925,307

1: Water from drilled wells

2: Water from White Plains Treatment Plant

\* Estimates

Sources: Ministries of Planning & Economic Affairs; Lands, Mines & Energy; Commerce & Industry; and Liberia

Institute of Statistics & Geo-Information Services (LISGIS); Forestry Development Authority (FDA); Liberia

Produce Marketing Corporation (LPMC); Bridgeway Corporation, and Liberia Water & Sewer Corporation (LWSC), Monrovia, Liberia

**REAL SECTOR**

CENTRAL BANK OF LIBERIA

**2.4a: Key Output Value-2006**

Liberian dollars

Commodity	Unit	Jan-06	Feb-06	Mar-06	Apr-06	May-06	Jun-06	Jan-Jun Total
<b>Agriculture</b>								
Rubber <sup>3</sup>	Mt.	239,135,329	605,891,496	756,887,489	243,946,685	1,496,587,387	262,456,952	3,604,905,338
Cocoa Beans <sup>4</sup>	Mt.	1,689,205	-	5,120,168	-	-	-	6,809,373
Coffee <sup>4</sup>	Mt.	-	-	321,727	-	-	-	321,727
Round Logs <sup>3*</sup>	M3	-	-	-	-	-	-	-
Sawn Timber <sup>4</sup>	M3	-	-	-	-	-	-	-
Fish <sup>4**</sup>	Kg.	1,063,799	1,498,989	2,272,662	1,611,817	3,125,302	3,125,301	12,697,870
<b>Mining<sup>4</sup></b>								
Gold	Ounces	-	-	1,039,402	828,089	327,888	5,959,188	8,154,567
Diamond*	Carat	-	-	-	-	-	-	-
<b>Manufacturing<sup>4</sup></b>								
Cement	Mt.	101,079,756	118,313,166	87,559,068	85,414,403	139,626,482	111,780,932	643,773,806
Spirit	Litre	605,450	975,100	1,307,400	1,799,750	1,922,500	1,956,675	8,566,875
Beer	Litre	37,010,450	38,184,811	45,623,267	40,603,754	44,190,363	38,982,478	244,595,123
Stout	Litre	19,363,975	21,537,625	25,195,850	22,155,750	25,778,500	25,276,475	139,308,175
Malta	Litre	4,682,685	3,709,545	4,662,840	4,421,025	4,704,000	4,411,470	26,591,565
Soft Drink	Litre	35,064,315	30,716,590	37,543,155	34,872,465	36,829,845	29,441,310	204,467,680
Oil Paint	Gal.	1,683,641	1,333,819	1,483,083	1,470,981	1,208,281	1,139,341	8,319,146
Water Paint	Gal.	343,519	296,310	302,110	290,583	1,799,372	722,239	3,754,132
Varnish	Gal.	481,040	381,091	423,738	186,791	302,070	284,835	2,059,565
Manoline Hair Grease	Kg.	0	0	0	287,459	67,746	0	355,205
Thinner	Gal.	159,438	117,220	101,282	90,470	99,702	67,789	635,900
Rubbing Alcohol	Litre	307,748	219,014	215,232	128,959	410,168	455,830	1,736,951
Powder Soap	Kg.	281,061	280,715	698,663	1,129,951	672,346	817,331	3,880,067
Chlorox	Litre	437,206	448,293	895,959	750,318	1,094,445	1,144,409	4,770,630
Nail	Kg.	n.a.	n.a.	n.a.	n.a.	n.a.	n.a.	-
Candle	Kg.	2,173,822	1,224,085	2,641,076	3,861,234	4,688,955	5,998,298	20,587,470
Mattresses	Pcs.	11,515,268	9,585,903	19,360,130	14,875,479	15,796,209	11,218,219	82,351,208
Deep Well Water <sup>1</sup>	Gal.	1,085,528	963,553	803,298	1,509,131	1,483,928**	1,851,199**	4,361,510
Finished Water <sup>2</sup>	Gal.	2,792,779	3,075,207	2,901,829	1,686,172	2,923,272**	2,613,997**	10,455,987

1. Water from drilled wells

\* Placed under United Nations ban

2. Water from White Plains Treatment Plant.

\*\* Estimates

3. Represents Export values

4. Represents quantity sold, not quantity produced

**Sources:** Ministries of Planning & Economic Affairs; Lands, Mines & Energy; Commerce & Industry; and Forestry Development Authority (F.D.A.); Liberia Produce Marketing Corporation (LPMC); Bridgeway Corporation, Liberia Water & Sewer Corporation (LWSC), Monrovia, Liberia

## REAL SECTOR

CENTRAL BANK OF LIBERIA

**2.4a: Key Output Value-2006** (continued)

Liberian dollars

Commodity	Unit	Jul-06	Aug-06	Sep-06	Oct-06	Nov-06	Dec-06	Jul-Dec Total	Grand Total
<b>Agriculture</b>									
Rubber3*	Mt.	1,231,682,231	934,955,355	1,034,213,529	975,501,143	820,276,354	177,488,176	5,174,116,788	<b>8,779,022,126</b>
Cocoa Beans4	Mt.	-	-	-	-	32,237,010**	42,982,680**	75,219,690	<b>82,029,063</b>
Coffee4	Mt.	-	-	-	-	-	-	0	<b>321,727</b>
Round Logs3***	M3	-	-	-	-	-	-	-	-
Sawn Timber4	M3	-	-	-	-	-	-	-	-
Fish4**	Kg.	2,834,167	2,026,836	1,937,947	2,116,317	2,318,114	2,433,426	13,666,807	<b>26,364,677</b>
<b>Mining4</b>									
Gold	Ounces	0	49,989	0	0	638,507	0	688,496	<b>8,843,063</b>
Diamond***	Carat	-	-	-	-	-	-	-	-
<b>Manufacturing4</b>									
Cement	Mt.	34,498,592	65,345,866	-	43,177,560	143,969,175	123,369,498	410,360,691	<b>1,054,134,497</b>
Spirit	Litre	2,125,000	1,691,800	1,712,325	1,185,875	2,345,000	2,579,500	11,639,500	<b>20,206,375</b>
Beer	Litre	44,891,889	36,312,451	30,434,869	33,636,762	39,369,486	76,224,594	260,870,051	<b>505,465,174</b>
Stout	Litre	29,996,800	24,859,375	21,702,100	23,466,175	26,002,100	50,845,350	176,871,900	<b>316,180,075</b>
Malta	Litre	5,086,935	4,188,030	3,242,820	3,989,580	4,942,875	9,985,710	31,435,950	<b>58,027,515</b>
Soft Drink	Litre	31,986,195	29,339,290	23,090,270	27,326,790	31,907,240	27,326,175	170,975,960	<b>375,443,640</b>
Oil Paint	Gal.	1,386,642	1,308,644	1,220,008	2,170,607	2,240,104	2,979,170	11,305,175	<b>19,624,321</b>
Water Paint	Gal.	869,026	657,038	645,394	1,545,329	1,534,951	1,977,196	7,228,934	<b>10,983,066</b>
Varnish	Gal.	346,660	327,161	305,002	542,652	560,026	778,688	2,860,189	<b>4,919,754</b>
Manoline Hair Grease	Kg.	-	-	-	-	-	-	0	<b>355,205</b>
Thinner	Gal.	123,510	90,013	147,508	151,778	174,811	195,315	882,935	<b>1,518,835</b>
Rubbing Alcohol	Litre	277,186	191,963	295,913	172,471	136,701	311,582	1,385,816	<b>3,122,767</b>
Powder Soap	Kg.	828,351	832,676	188,118	268,740	0	0	2,117,885	<b>5,997,952</b>
Chlorox	Litre	1,308,141	1,273,635	1,283,323	1,020,615	807,385	1,061,372	6,754,471	<b>11,525,101</b>
Nail	Kg.	n.a.	n.a.	n.a.	n.a.	n.a.	n.a.	-	-
Candle	Kg.	2,807,190	2,289,858	3,008,395	2,675,157	3,574,641	3,307,894	17,663,135	<b>38,250,605</b>
Mattresses	Pcs.	12,252,425	10,958,421	11,198,929	10,689,308	14,483,902	16,407,660	75,990,645	<b>158,341,853</b>
Deep Well Water1	Gal.	615,841	606,416	762,441	112,341	524,260**	524,260**	3,145,559	<b>7,507,069</b>
Finished Water2	Gal.	3,399,787	2,948,695	2,987,032	3,415,984	3,187,874**	3,134,896**	19,074,268	<b>29,530,255</b>

1. Water from drilled wells

\* Revised

2. Water from White Plains Treatment Plant.

\*\* Estimates

3. Represents Export values

\*\*\* Placed under United Nations ban

4. Represents quantity sold, not quantity produced

Sources: Ministries of Planning &amp; Economic Affairs; Lands, Mines &amp; Energy; Commerce &amp; Industry; and Liberia Institute of Statistics &amp; Geo-Information Services (LISGIS);

Forestry Development Authority (F.D.A.); Liberia Produce Marketing Corporation (LPMC); Bridgeway Corporation, Liberia Water &amp; Sewer Corporation (LWSC), Monrovia, Liberia

**2.4b: Key Output Value-2007**

Liberian dollars

Commodity	Unit	Jan-07	Feb-07	Mar-07	Apr-07	May-07	Jun-07	Jan-Jun Total
<b>Agriculture</b>								
Rubber <sup>3</sup>	Mt.	879,955,339	1,393,187,649	855,423,960	172,727,034*	1,467,145,818	1,119,359,117	5,887,798,917
Cocoa Beans <sup>4**</sup>	Mt.	36,767,167	15,768,114	12,940,955	21,825,412	15,220,500	12,061,265	114,583,413
Coffee <sup>4</sup>	Mt.	-	-	-	-	-	-	-
Round Logs <sup>3</sup>	M <sup>3</sup>	-	-	-	-	-	-	-
Sawn Timber <sup>4</sup>	Pcs.	2,095,010	2,832,609	2,884,688	3,557,819	3,051,089	2,710,109	17,131,324
Fish <sup>4</sup>	Kg.	-	-	-	-	-	-	-
<b>Mining<sup>4</sup></b>								
Gold	Ounces	10,211,803	9,871,269	-	37,464,750	28,270,609	17,905,988	103,724,419
Diamond	Carat	-	-	-	-	-	-	-
<b>Manufacturing<sup>4</sup></b>								
Cement	Mt.	95,194,103	113,073,713	78,725,625	90,092,321	103,657,707	149,086,350	629,829,819
Spirit	Litre	3,133,000	4,665,325	4,121,575	3,638,625	3,972,500	4,058,475	23,589,500
Beer	Litre	37,063,982	46,119,482	54,366,694	52,882,970	50,441,648	43,766,619	284,641,395
Stout	Litre	24,686,300	31,649,075	36,993,975	37,273,475	34,340,875	34,517,175	199,460,875
Malta	Litre	4,992,855	5,943,945	7,458,780	7,268,415	6,529,005	6,157,095	38,350,095
Soft Drink	Litre	37,553,525	35,642,450	45,629,990	41,400,410	43,312,375	33,887,165	237,425,915
Oil Paint	Gal.	2,084,095	1,569,654	1,792,676	1,417,114	1,277,871	1,229,222	9,370,632
Water Paint	Gal.	1,109,421	936,927	929,220	862,116	804,129	815,318	5,457,131
Varnish	Gal.	595,456	448,473	512,556	404,890	365,106	351,206	2,677,687
Manoline Hair Grease	Kg.	-	-	-	-	-	-	0
Thinner	Gal.	178,350	131,715	116,009	99,076	101,850	66,636	693,636
Rubbing Alcohol	Litre	202,274	221,446	348,178	393,257	371,374	185,967	1,722,496
Powder Soap	Kg.	483,991	409,523	750,200	503,003	542,872	490,704	3,180,293
Chlorox	Litre	993,954	1,095,094	1,283,508	1,319,391	1,055,207	884,829	6,631,983
Nail	Kg.	n.a.	n.a.	n.a.	n.a.	n.a.	n.a.	n.a.
Candle	Kg.	2,486,413	3,732,115	3,329,769	2,918,177	2,277,903	1,416,633	16,161,010
Mattresses	Pcs.	17,432,581	15,177,477	14,881,949	16,431,979	20,346,285	19,449,790	103,720,061
Deep Well Water <sup>1</sup>	Gal.	1,022,985	991,044	1,150,511	1,482,451	2,946,217	1,518,642**	9,111,850
Finished Water <sup>2</sup>	Gal.	4,353,111	5,537,959	7,857,177	6,072,663	5,296,278	5,823,437**	34,940,625

1. Water from drilled wells

\* Revised

2. Water from White Plains Treatment Plant.

\*\* Estimates

3. Represents Export values

4. Represents quantity sold, not quantity produced

Sources: *Ministries of Planning & Economic Affairs; Lands, Mines & Energy; Commerce & Industry; Forestry Development Authority (F.D.A.); Liberia Produce Marketing Corporation (LPMC); Bridgeway Corporation, Liberia Water & Sewer Corporation (LWSC), Monrovia, Liberia*

**2.4b: Key Output Value-2007** - continued*Liberian dollars*

Commodity	Unit	Jul-07	Aug-07	Sep-07	Oct-07	Nov-07	Dec-07	Jul-Dec Total	Grand Total
<b>Agriculture</b>									
Rubber <sup>3</sup>	Mt.	1,361,080,985	279,663,204	1,560,109,148	615,197,404	795,969,681	791,616,030	5,403,636,452	<b>11,291,435,369</b>
Cocoa Beans <sup>4*</sup>	Mt.	7,207,297	6,428,129	5,843,754	4,784,102	18,228,576	27,223,234	69,715,092	<b>184,298,505</b>
Coffee <sup>4</sup>	Mt.	-	-	-	-	-	-	-	<b>0</b>
Round Logs <sup>3</sup>	M <sup>3</sup>	-	-	-	-	-	-	-	<b>0</b>
Sawn Timber <sup>4</sup>	Pcs.	2,316,342	1,624,670	1,754,777	2,307,395	2,158,324	1,645,202	11,806,710	<b>28,938,034</b>
Fish <sup>4</sup>	Kg.	-	-	-	-	-	-	-	-
<b>Mining<sup>4</sup></b>									
Gold	Ounces	30,014,016	21,355,448	42,120,073	44,118,419	40,244,815	55,379,780	233,232,551	<b>336,956,970</b>
Diamond	Carat	-	-	20,209,099	93,711,413	24,348,474	24,584,364	162,853,350	<b>162,853,350</b>
<b>Manufacturing<sup>4</sup></b>									
Cement	Mt.	108,174,336	148,379,755	126,887,904	123,791,612	25,709,376	145,993,848	678,936,831	<b>1,308,766,650</b>
Spirit	Litre	5,949,450	5,803,350	6,147,750	5,329,250	5,862,550	7,063,375	36,155,725	<b>59,745,225</b>
Beer	Litre	52,915,078	36,208,421	34,387,377	45,366,453	46,496,115	89,363,848	304,737,292	<b>589,378,687</b>
Stout	Litre	41,418,675	36,785,425	22,319,150	38,213,025	34,212,950	61,944,725	234,893,950	<b>434,354,825</b>
Malta	Litre	6,591,480	5,657,295	4,621,680	5,906,460	6,323,205	14,092,155	43,192,275	<b>81,542,370</b>
Soft Drink	Litre	35,574,710	28,002,905	28,782,465	37,976,590	36,378,875	25,634,575	192,350,120	<b>429,776,035</b>
Oil Paint	Gal.	1,401,269	1,381,907	1,157,889	2,355,141	2,251,813	3,489,851	12,037,870	<b>21,408,502</b>
Water Paint	Gal.	892,818	685,543	636,627	1,826,131	1,639,977	2,938,184	8,619,280	<b>14,076,411</b>
Varnish	Gal.	400,363	394,831	330,825	588,785	562,953	872,463	3,150,220	<b>5,827,907</b>
Manoline Hair Grease	Kg.	360,091	450,850	33,644,520	396,962	185,293	466,714	35,504,430	<b>35,504,430</b>
Thinner	Gal.	123,399	90,463	142,989	203,597	200,333	302,452	1,063,233	<b>1,756,869</b>
Rubbing Alcohol	Litre	291,502	253,073	223,681	301,111	14,980	338,124	1,422,471	<b>3,144,967</b>
Powder Soap	Kg.	612,400	480,557	711,711	678,040	616,640	534,776	3,634,124	<b>6,814,417</b>
Chlorox	Litre	705,791	713,034	1,188,958	880,219	792,006	977,668	5,257,676	<b>11,889,659</b>
Nail	Kg.	n.a	n.a	n.a	na	na	na	na	<b>na</b>
Candle	Kg.	1,963,354	2,406,530	2,649,660	2,870,883	3,166,221	2,944,914	16,001,562	<b>32,162,572</b>
Mattresses	Pcs.	16,996,564	15,393,171	14,277,970	15,871,383	17,606,515	16,525,773	96,671,376	<b>200,391,437</b>
Deep Well Water <sup>1*</sup>	Gal.	1,412,337	1,366,778	1,776,811	1,410,713	5,924,995	6,771,423	18,663,057	<b>27,774,907</b>
Finished Water <sup>2*</sup>	Gal.	6,638,719	5,241,093	5,590,499	20,413,515	85,736,763	979,846,872	1,103,467,461	<b>1,138,408,086</b>

1. Water from drilled wells

2. Water from White Plains Treatment Plant. \* Estimates

3. Represents Export values

4. Represents quantity sold, not quantity produced

Sources: Ministries of Planning &amp; Economic Affairs; Lands, Mines &amp; Energy; Commerce &amp; Industry; Forestry Development Authority (F.D.A.);

Liberia Produce Marketing Corporation (LPMC); Bridgeway Corporation, Liberia Water &amp; Sewer Corporation (LWSC), Monrovia, Liberia

**REAL SECTOR**

CENTRAL BANK OF LIBERIA

**2.4b: Key Output Value - 2008**

Liberian dollars

Commodity	Unit	Jan-08	Feb-08	Mar-08	Apr-08	May-08	Jun-08	Jan-Jun Total
<b>Agriculture</b>								
Rubber <sup>3</sup>	Mt.	1,250,170,296	1,134,540,384	1,112,500,813	732,807,366	1,973,297,473	990,435,535	7,193,751,867
Cocoa Beans <sup>4</sup>	Mt.	44,226,008	22,787,186	9,999,938	7,197,900	3,000,575	4,403,725	91,615,332
Coffee <sup>4</sup>	Mt.	-	-	-	88,664	-	-	88,664
Round Logs <sup>3</sup>	M <sup>3</sup>	-	-	-	-	-	-	-
Sawn Timber <sup>4</sup>	Pcs.	3,075,377	3,757,523	4,035,813	4,230,283	3,209,693	3,524,631	21,833,320
Fish <sup>4</sup>	Kg.	-	-	-	-	-	-	-
<b>Mining<sup>4</sup></b>								
Gold	Ounces	82,265,921	80,283,219	84,651,738	72,797,790	77,381,909	70,397,075	467,777,652
Diamond	Carat	37,389,502	31,548,822	42,294,270	56,031,496	31,914,845	116,774,364	315,953,299
<b>Manufacturing<sup>4</sup></b>								
Cement	Mt.	124,092,418	158,047,451	149,522,625	2,659,607	130,960,317	86,374,796	651,657,214
Spirit	Litre	6,083,500	5,500,900	6,310,000	4,762,100	4,172,725	5,262,525	32,091,750
Beer	Litre	47,994,960	63,042,945	66,631,295	65,215,185	64,722,480	57,019,125	364,625,990
Stout	Litre	31,078,750	39,105,000	42,315,000	43,208,750	46,357,500	40,058,750	242,123,750
Malta	Litre	7,724,070	10,249,740	10,143,720	9,575,145	8,909,100	7,797,600	54,399,375
Soft Drink	Litre	37,557,890	37,558,610	37,556,450	14,005,630	23,303,400	23,918,720	173,900,700
Oil Paint	Gal.	1,583,851	1,158,696	1,566,000	330,970	767,136	524,256	5,930,909
Water Paint	Gal.	1,458,659	1,758,688	2,435,672	650,384	2,448,611	1,795,907	10,547,921
Varnish	Gal.	445,458	325,883	440,438	93,085	215,757	147,447	1,668,068
Manoline Hair Grease	Kg.	670,349	319,770	712,500	581,901	435,873	590,550	3,310,943
Thinner	Gal.	62,274	69,409	124,313	58,002	36,386	25,146	375,530
Rubbing Alcohol	Litre	245,826	253,308	258,750	154,235	429,556	357,188	1,698,863
Powder Soap	Kg.	526,884	699,105	656,250	775,868	612,749	1,162,050	4,432,906
Chlorox	Litre	886,657	855,228	917,500	969,522	1,063,151	939,483	5,631,541
Nail	Kg.	na	na	na	na	na	na	-
Candle	Kg.	2,447,154	2,648,762	2,716,875	2,513,437	2,529,327	2,179,320	15,034,875
Mattresses	Pcs.	18,380,164	19,024,096	18,278,539	21,355,506	21,066,215	18,777,453	116,881,973
Deep Well Water <sup>1*</sup>	Gal.	1,145,247	1,138,285	1,197,463	1,160,332	na	na	4,641,327
Finished Water <sup>2*</sup>	Gal.	5,597,087	4,600,345	8,970,674	6,389,369	na	na	25,557,475

1. Water from drilled wells

2. Water from White Plains Treatment Plant.

\* Estimates

3. Represents Export values

4. Represents quantity sold, not quantity produced

Sources: Ministries of Planning &amp; Economic Affairs; Lands, Mines &amp; Energy; Commerce &amp; Industry; Forestry Development Authority (F.D.A.);

Liberia Produce Marketing Corporation (LPMC); Bridgeway Corporation, Liberia Water &amp; Sewer Corporation (LWSC), Monrovia, Liberia



**3.1: Government Revenue 2006-2008***Millions of Liberian Dollars*

Revenue Category	2006			2007				2008		
	Jan-Jun* Actual	Jul-Dec Actual	Total Actual	Jan-Mar Actual	Apr-Jun Actual	Jul-Sep Actual	Oct-Dec Actual	Jan-Feb* Actual	Mar-Apr Actual	May-Jun Actual
Customs and Excise	1,119.7	1,746.3	2,866.0	973.0	1,220.5	1,128.1	1,232.7	872.6	804.1	847.8
Direct Taxes	918.4	990.5	1,908.9	1,227.1	769.4	645.1	628.2	589.0	1,061.2	523.5
Indirect Taxes	342.0	344.0	686.0	160.1	131.3	545.8	459.1	580.0	229.7	735.6
FDA <sup>1</sup> Levy	-	1.1	1.1	-	3.8	5.9	9.3	9.9	7.1	13.6
Petroleum Sales Levy	93.0	61.3	154.3	51.2	80.1	55.5	34.7	52.2	102.3	79.0
Maritime	290.6	300.0	590.6	205.5	171.1	159.2	240.9	161.1	71.3	212.5
Grant	55.0	377.4	432.4	-	87.0	-	-	272.8	-	104.6
<b>Total</b>	<b>2,818.7</b>	<b>3,820.6</b>	<b>6,639.3</b>	<b>2,616.9</b>	<b>2,463.2</b>	<b>2,539.6</b>	<b>2,604.9</b>	<b>2,537.6</b>	<b>2,275.7</b>	<b>2,516.6</b>

\* Revised

**3.2: Government Expenditure 2006-2008***Millions of Liberian Dollars*

Expenditure Category	2006			2007				2008		
	Jan-Jun Actual	Jul-Dec Actual	Total Actual	Jan-Mar Actual	Apr-Jun Actual	Jul-Sep Actual	Oct-Dec Actual	Jan-Feb Actual	Mar-Apr Actual	May-Jun Actual
General Adimistration <sup>2</sup>	972.5	1,482.9	2,455.4	665.7	964.8	1,107.1	1,118.6	720.3	937.4	686.4
Social and Community Services	373.2	680.2	1,053.4	399.8	683.6	316.2	476.7	397.3	378.9	494.4
Economic Services	69.1	186.1	255.2	119.8	227.1	143.4	170.9	200.1	173.9	168.2
GOL Special Commitment	-	-	-	-	-	-	-	-	-	-
Development Expenditure	-	-	-	-	-	-	-	-	-	-
Other Expenditures <sup>3</sup>	487.3	750.5	1,237.8	448.7	644.1	944.4	1,067.3	523.4	575.8	1,178.6
<b>Total</b>	<b>1,902.1</b>	<b>3,099.7</b>	<b>5,001.8</b>	<b>1,634.0</b>	<b>2,519.6</b>	<b>2,511.1</b>	<b>2,833.5</b>	<b>1,841.0</b>	<b>2,066.0</b>	<b>2,527.6</b>

1 : Forestry Development Authority (FDA)

2 : General Adimistration includes Security Service Sector

3 : Other Expenditures includes what was previously Development and Commitment

*Source* : Ministry of Finance, Monrovia, Liberia

**GOVERNMENT FINANCE**

CENTRAL BANK OF LIBERIA

**3.3: Functional Classification of Government Expenditure 2006-2008**

Millions of Liberian Dollars

Functional Classification	Jan-Jun 2006 Actual	Jul-Dec 2006 Actual	Jan-Jun 2007 Actual	Jul-Dec 2007 Actual	Jan-Feb 2008 Actual	Mar-Apr 2008 Actual	May-Jun 2008 Actual
<b>General Administration *</b>	<b>1,414.4</b>	<b>1,490.2</b>	<b>1,630.5</b>	<b>2,225.7</b>	<b>720.3</b>	<b>937.4</b>	<b>415.3</b>
National Legislature	150.4	252.1	263.0	322.3	89.0	217.5	139.5
Executive Policy	568.3	509.4	667.3	675.7	301.7	320.3	162.0
Internal Management Services	150.2	55.5	68.7	154.9	41.2	63.9	14.7
Protection of Person & Property	243.7	492.3	333.0	818.0	162.9	220.4	52.7
Foreign Affairs	141.4	109.8	130.8	96.5	114.3	89.4	32.5
Defence	157.0	70.7	167.7	158.3	11.3	25.9	13.9
<b>Social &amp; Community Services</b>	<b>469.0</b>	<b>693.6</b>	<b>1,083.2</b>	<b>792.9</b>	<b>397.3</b>	<b>378.9</b>	<b>168.2</b>
Social Services	304.8	421.9	638.3	468.8	170.8	279.7	106.3
Community Services	164.2	271.7	444.9	324.1	226.5	99.2	61.9
<b>Economic Services</b>	<b>114.4</b>	<b>189.9</b>	<b>347.1</b>	<b>314.2</b>	<b>200.1</b>	<b>173.9</b>	<b>101.8</b>
Primary	26.5	52.6	177.5	119.5	33.5	77.7	62.4
Secondary	87.9	137.3	169.6	194.7	166.7	96.1	39.3
<b>Other Expenditure</b>	<b>238.4</b>	<b>787.6</b>	<b>1,092.8</b>	<b>2,011.7</b>	<b>523.4</b>	<b>575.8</b>	<b>387.1</b>
<b>Development</b>	<b>70.0</b>	-	-	-	-	-	-
<b>Total</b>	<b>2,306.2</b>	<b>3,161.3</b>	<b>4,153.6</b>	<b>5,344.5</b>	<b>1,841.0</b>	<b>2,066.0</b>	<b>1,072.4</b>

\* Also includes the Security Services Sector

**3.4: Summary Estimates of Liberia's Public Debt Stock and Status**

Provisional as at June 30, 2008

(In Millions US\$)

External Debt	Principal Arrears	Estimated Debt Relief	Current	Percentage Distribution	
					Current
Multilateral	1,615.0	655.0	960.0		21.4
Bilateral	1,543.0	254.0	1,289.0		28.8
External Banks' Credit	1,325.0	-	1,325.0		29.6
Suppliers' Credit	249.0	-	249.0		5.6
<b>Sub-Total</b>	<b>4,732.0</b>	<b>909.0</b>	<b>3,823.0</b>		
<b>Domestic Debt</b>	656.1	-	656.1		14.6
<b>Sub-Total</b>	<b>656.1</b>	-	<b>656.1</b>		
<b>Total Stock of Debt*</b>	<b>5,388.1</b>	<b>909.0</b>	<b>4,479.1</b>		<b>100.0</b>

Note: Debt figures are provisional

Source : Ministry of Finance, Monrovia, Liberia

## EXTERNAL TRADE

CENTRAL BANK OF LIBERIA

**4.1: Exports and Imports 2006-2008***(Millions of United States Dollar)s*

Period	2006		2007		2008		Balance of Trade		
	Exports	Imports	Exports	Imports	Exports	Imports	2006	2007	2008
Jan	4.2	30.8	15.5	25.8	22.8	71.5	(26.6)	(10.3)	(48.7)
Feb	11.1	38.0	23.3	64.3	21.1	42.4	(26.9)	(41.0)	(21.3)
Mar	13.7	37.8	14.1	25.7	20.6	63.1	(24.1)	(11.6)	(42.5)
Apr	4.3	26.9	4.1	34.9	14.8	85.0	(22.6)	(30.8)	(70.2)
May	26.5	40.7	24.6	29.7	33.8	56.6	(14.2)	(5.1)	(22.8)
Jun	5.6	34.0	19.6	36.9	19.1	46.5	(28.4)	(17.3)	(27.4)
Jul	20.9	76.3	23.1	56.0			(55.4)	(32.9)	-
Aug	15.9	38.3	5.5	66.4			(22.4)	(60.9)	-
Sep	20.6	46.1	26.8	28.4			(25.5)	(1.6)	-
Oct	16.8	35.7	12.9	58.6			(18.9)	(45.7)	-
Nov	14.9	34.7	14.6	34.5			(19.8)	(19.9)	-
Dec	3.3	27.4	16.1	38.2			(24.1)	(22.1)	-
<b>Total</b>	<b>157.8</b>	<b>466.7</b>	<b>200.2</b>	<b>499.4</b>	<b>132.2</b>	<b>365.1</b>	<b>(308.9)</b>	<b>(299.2)</b>	<b>(232.9)</b>

**4.2a: Commodity Composition of Exports-2006***(Thousands of United States Dollars)*

Commodity	Jan	Feb	Mar	Apr	May	Jun	Jan-Jun Total
Rubber	3,669.1	10,684.0	13,503.8	4,294.1	26,343.7	4,479.6	62,974.3
Cocoa beans	77.7	87.5	-	-	-	-	165.2
Coffee	-	-	-	-	-	6.6	6.6
Round Logs*	-	-	-	-	-	-	0.0
Iron Ore	-	-	-	-	-	-	0.0
Other Commodities	464.5	288.9	183.8	39.6	145.4	1,141.0	2,263.2
<b>Total</b>	<b>4,211.3</b>	<b>11,060.4</b>	<b>13,687.6</b>	<b>4,333.7</b>	<b>26,489.1</b>	<b>5,627.2</b>	<b>65,409.3</b>

Commodity	Jul	Aug	Sep	Oct	Nov	Dec	Jul-Dec Total	Grand Total
Rubber**	20,634.6	15,655.7	17,317.7	16,395.0	14,055.5	3,118.8	87,177.3	150,151.6
Cocoa beans	-	-	-	35.0	42.0	44.8	121.8	287.0
Coffee	-	-	-	-	-	-	0.0	6.6
Round Logs*	-	-	-	-	-	-	0.0	0.0
Iron Ore	-	-	1,006.0	-	-	-	1,006.0	1,006.0
Other Commodities	237.0	299.1	2,304.1	343.0	824.2	110.4	4,117.8	6,381.0
<b>Total</b>	<b>20,871.6</b>	<b>15,954.8</b>	<b>20,627.8</b>	<b>16,773.0</b>	<b>14,921.7</b>	<b>3,274.0</b>	<b>92,422.9</b>	<b>157,832.2</b>

\* Placed under UN ban

\*\* Revised

Sources: Forestry Development Authority (F.D.A.) and Ministry of Commerce &amp; Industry, Monrovia, Liberia

## EXTERNAL TRADE

CENTRAL BANK OF LIBERIA

**4.2b: Commodity Composition of Exports-2007***(Thousands of United States Dollars)*

Commodity	Jan	Feb	Mar	Apr	May	Jun*	Jan-Jun Total
Rubber	14,399.5	22,963.4	13,762.4	2,833.0	23,782.5	17,906.9	95,647.7
Cocoa beans	272.2	0.0	0.0	183.4	0.0	122.1	577.7
Coffee	0.0	0.0	154.8	90.0	0.0	18.0	262.8
Round Logs	0.0	0.0	0.0	0.0	0.0	0.0	0.0
Iron Ore	400.0	0.0	0.0	0.0	0.0	80.0	480.0
Gold	167.1	162.7	0.0	614.5	458.3	286.4	1,689.0
Other Commodities	244.4	185.9	222.1	355.0	366.8	1,191.1	2,565.3
<b>Total</b>	<b>15,483.2</b>	<b>23,312.0</b>	<b>14,139.3</b>	<b>4,075.9</b>	<b>24,607.6</b>	<b>19,604.5</b>	<b>101,222.5</b>

Commodity	Jul	Aug	Sep	Oct	Nov	Dec	Jul-Dec Total	Grand Total
Rubber	22,225.3	4,481.1	25,318.2	9,980.5	13,230.9	13,026.4	88,262.4	<b>183,910.1</b>
Cocoa beans	19.7	-	-	364.0	101.1	903.5	1,388.3	<b>1,966.0</b>
Coffee	-	-	-	-	-	-	-	<b>262.8</b>
Round Logs	-	-	-	-	-	-	-	<b>0.0</b>
Iron Ore	-	-	-	-	-	-	-	<b>480.0</b>
Gold	490.1	342.2	683.3	715.7	618.6	911.3	3,761.2	<b>5,450.2</b>
Diamond	-	-	328.0	1,520.3	404.7	404.5	2,657.5	<b>2,657.5</b>
Other Commodities	403.5	646.1	454.7	345.0	199.4	812.0	2,860.7	<b>5,426.0</b>
<b>Total</b>	<b>23,138.6</b>	<b>5,469.4</b>	<b>26,784.2</b>	<b>12,925.5</b>	<b>14,554.7</b>	<b>16,057.7</b>	<b>98,930.1</b>	<b>200,152.6</b>

**4.2c: Commodity Composition of Exports-2008***(Thousands of United States Dollars)*

Commodity	Jan	Feb**	Mar	Apr	May	June	Jan-Jun Total
Rubber	19,693.9	18,094.7	17,800.0	11,711.8	31,237.9	15,597.4	<b>114,135.8</b>
Cocoa beans	161.0	161.0	136.5	231.0	340.9	343.5	<b>1,373.9</b>
Coffee	0.0	0.0	0.0	13.8	0.0	0.0	<b>13.8</b>
Round Logs	0.0	0.0	0.0	0.0	156.6	0.0	<b>156.6</b>
Iron Ore	0.0	0.0	270.0	0.0	0.0	0.0	<b>270.0</b>
Diamond	589.0	503.2	676.7	895.5	505.2	1,839.0	<b>5,008.6</b>
Gold	1,295.9	1,280.4	1,354.4	1,163.5	1,225.0	1,108.6	<b>7,427.9</b>
Other Commodities	1,024.7	1,034.6	516.7	790.2	348.8	220.5	<b>3,935.6</b>
<b>Total</b>	<b>22,764.6</b>	<b>21,073.9</b>	<b>20,754.4</b>	<b>14,805.9</b>	<b>33,814.4</b>	<b>19,109.0</b>	<b>132,322.1</b>

\* Estimates from the Foreign Trade Division, Ministry of Commerce &amp; Industry

\*\* Revised

Source: Ministry of Commerce &amp; Industry and Ministry of Lands, Mines and Energy, Monrovia, Liberia

**EXTERNAL TRADE**

CENTRAL BANK OF LIBERIA

**4.3a: Commodity Composition of Imports-2006**

Thousands of United States Dollars

Commodity	Jan	Feb	Mar	Apr	May	Jun	Jan-Jun Total
Food and Live Animals	8,725.7	13,519.4	5,515.7	3,884.4	10,075.0	3,606.6	45,326.8
O/w Rice	4,311.0	9,231.9	1,178.0	775.7	7,218.0	368.3	23,082.9
Beverage and Tobacco	1,442.5	1,898.7	1,210.3	525.6	569.1	669.8	6,316.0
Crude Materials	401.3	587.1	2,989.3	1,228.2	712.4	1,282.7	7,201.2
Mineral, Fuels, Lubricants	280.2	324.5	168.4	587.2	239.5	723.8	2,323.6
Animal and Vegetable Oil	1,013.0	426.0	832.2	275.0	655.2	13.7	3,215.1
Chemicals and Related Products	1,586.9	1,874.6	1,828.1	1,528.8	5,127.8	1,020.5	12,966.6
Manufactured Products	2,617.9	2,707.1	2,903.1	3,475.4	3,603.2	2,874.2	18,180.9
Machinery & Transport Equipment	3,794.2	2,300.2	3,442.6	3,196.5	3,572.1	6,162.0	22,467.6
Petroleum Products	7,639.4	11,197.4	14,880.6	7,550.2	9,292.0	10,219.5	60,779.1
Miscellaneous Articles <sup>1</sup>	3,326.6	3,174.9	4,064.8	4,619.9	6,816.1	7,434.6	29,437.0
<b>Total</b>	<b>30,827.8</b>	<b>38,009.8</b>	<b>37,835.2</b>	<b>26,871.2</b>	<b>40,662.5</b>	<b>34,007.4</b>	<b>208,213.8</b>

Commodity	Jul	Aug	Sep	Oct	Nov	Dec	Jul-Dec Total	Grand Total
Food and Live Animals	43,343.0	4,984.4	7,164.1	4,614.4	5,939.8	5,607.7	71,653.3	<b>116,980.1</b>
O/w Rice	36,582.0	-	663.1	642.0	834.4	605.3	39,326.9	<b>62,409.8</b>
Beverage and Tobacco	523.4	2,193.5	1,813.5	1,799.1	604.4	482.8	7,416.7	<b>13,732.7</b>
Crude Materials	635.3	690.9	796.9	1,257.8	629.8	705.3	4,716.0	<b>11,917.2</b>
Mineral, Fuels, Lubricants	347.0	2,330.8	164.3	4,691.0	610.8	155.1	8,299.0	<b>10,622.6</b>
Animal and Vegetable Oil	425.7	1,027.4	448.9	743.2	115.8	1,456.2	4,217.1	<b>7,432.2</b>
Chemicals and Related Products	2,639.0	1,396.2	1,986.6	1,254.5	1,720.0	1,640.4	10,636.6	<b>23,603.2</b>
Manufactured Products	4,361.8	10,375.5	4,162.5	3,077.4	5,900.9	2,666.5	30,544.6	<b>48,725.4</b>
Machinery & Transport Equipment	7,219.4	3,640.5	7,715.8	5,781.9	4,822.6	5,654.8	34,835.1	<b>57,302.7</b>
Petroleum Products	7,871.2	9,592.9	16,815.1	9,315.1	10,898.6	6,720.8	61,213.8	<b>121,992.9</b>
Miscellaneous Articles <sup>1</sup>	8,925.8	2,111.6	5,008.3	3,205.3	3,416.2	2,274.7	24,941.9	<b>54,378.8</b>
<b>Total</b>	<b>76,291.7</b>	<b>38,343.6</b>	<b>46,076*</b>	<b>35,739.7</b>	<b>34,658.9</b>	<b>27,364.2</b>	<b>258,474.0</b>	<b>466,687.9</b>

1. Includes commodities and transactions not classified elsewhere.

\* Revised

Sources: Ministry of Commerce &amp; Industry and Ministry of Finance, Monrovia, Liberia

**4.3b: Commodity Composition of Imports-2007**

CENTRAL BANK OF LIBERIA

*Thousands of United States Dollars*

Commodity	Jan	Feb	Mar	Apr	May	Jun	Jan-Jun Total
Food and Live Animals	5,661.7	26,836.1	5,355.5	5,342.3	5,428.0	8,753.9	57,377.5
O/w Rice	625.3	20,696.8	602.8	603.2	-	126.5	22,654.6
Beverage and Tobacco	1,317.5	1,575.0	1,005.5	864.0	2,247.7	305.8	7,315.5
Crude Materials	112.8	736.9	559.4	750.5	660.5	312.3	3,132.4
Mineral, Fuels, Lubricants	516.2	1,058.2	883.2	227.8	169.8	235.2	3,090.4
Animal and Vegetable Oil	131.8	161.2	369.3	869.8	369.8	443.9	2,345.8
Chemicals and Related Products	1,586.9	1,351.0	1,352.9	1,668.9	1,490.2	855.9	8,305.8
Manufactured Products	2,682.2	8,628.6	1,589.3	2,813.8	4,081.0	4,549.3	24,344.2
Machinery & Transport Equipment	4,556.3	10,119.5	5,753.7	11,463.3	6,611.0	8,600.9	47,104.7
Petroleum Products	7,762.6	8,331.7	6,277.5	6,467.2	6,436.9	10,337.9	45,613.8
Miscellaneous Articles <sup>1</sup>	1,435.1	5,504.8	2,554.5	4,425.4	2,201.3	2,515.5	18,636.6
<b>Total</b>	<b>25,763.1</b>	<b>64,303.0</b>	<b>25,700.8</b>	<b>34,893.0</b>	<b>29,696.2</b>	<b>36,910.6</b>	<b>217,266.7</b>

Commodity	Jul	Aug	Sep	Oct	Nov	Dec	Jul-Dec Total	Grand Total
Food and Live Animals	8,239.9	25,437.0	5,530.0	18,131.0	3,104.6	13,074.2	73,516.7	<b>130,894.20</b>
O/w Rice	332.8	19,608.0	-	9,873.8	-	7,494.5	37,309.1	<b>59,963.70</b>
Beverage and Tobacco	1,686.7	1,881.8	839.7	2,090.9	392.1	1,500.1	8,391.3	<b>15,706.80</b>
Crude Materials	406.9	812.2	416.1	783.2	373.6	1,014.7	3,806.7	<b>6,939.10</b>
Mineral, Fuels, Lubricants	607.6	555.5	248.0	574.9	368.6	205.0	2,559.6	<b>5,650.00</b>
Animal and Vegetable Oil	884.9	185.9	3,102.6	211.3	475.4	-	4,860.1	<b>7,205.90</b>
Chemicals and Related Products	3,236.5	2,007.9	1,158.7	2,555.3	1,993.5	1,176.9	12,128.8	<b>20,434.60</b>
Manufactured Products	15,322.8	8,902.0	5,034.6	4,399.1	7,868.6	4,828.4	46,355.5	<b>70,699.70</b>
Machinery & Transport Equipment	9,948.7	7,726.4	8,275.3	10,391.1	7,694.3	6,270.8	50,306.6	<b>97,411.30</b>
Petroleum Products	11,407.4	15,129.1	1,716.2	14,447.9	9,240.4	6,044.9	57,985.9	<b>103,599.70</b>
Miscellaneous Articles <sup>1</sup>	4,228.3	3,739.3	2,043.4	4,968.0	2,953.4	4,052.8	21,985.2	<b>40,621.80</b>
<b>Total</b>	<b>55,969.7</b>	<b>66,377.1</b>	<b>28,364.6</b>	<b>58,552.7</b>	<b>34,464.5</b>	<b>38,167.8</b>	281,896.4	<b>499,163.10</b>

**4.3c: Commodity Composition of Imports-2008***Thousands of United States Dollars*

Commodity	Jan	Feb	Mar	Apr	May	Jun	Jan-Jun Total
Food and Live Animals	25,936.4	5,440.2	17,167.3	7,460.1	12,230.7	3,242.6	71,477.3
O/w Commercial Rice	15,840.0	-	12,826.0	-	5,783.8	-	34,449.8
O/w Non-Commercial Rice	1,187.9	598.7	592.0	-	-	-	2,378.5
Beverage and Tobacco	887.9	208.6	1,152.8	1,683.9	1,773.8	1,284.0	6,991.1
Crude Materials	912.4	2,186.4	2,479.9	547.5	596.5	813.3	7,536.1
Mineral, Fuels, Lubricants	3,911.5	1,998.2	2,545.9	1,046.1	972.4	638.8	11,112.8
Animal and Vegetable Oil	305.8	340.3	773.4	243.1	-	-	1,662.6
Chemicals and Related Products	2,513.6	2,223.7	3,754.1	3,219.9	2,839.3	2,130.1	16,680.6
Manufactured Products	3,529.0	6,579.6	8,794.5	9,021.2	14,010.0	4,616.5	46,550.8
Machinery & Transport Equipment	19,922.2	11,048.6	8,813.1	51,470.9	17,081.6	8,526.1	116,862.4
Petroleum Products	6,201.0	11,636.9	13,913.0	7,185.0	3,582.5	22,917.3	65,435.6
Miscellaneous Articles <sup>1</sup>	7,373.9	704.9	3,711.3	3,122.4	3,518.5	2,371.1	20,802.1
<b>Total</b>	<b>71,493.6</b>	<b>42,367.2</b>	<b>63,105.3</b>	<b>85,000.1</b>	<b>56,605.3</b>	<b>46,539.8</b>	<b>365,111.3</b>

1. Includes commodities and transactions not classified elsewhere.

Note: Petroleum figures for April, 2007 has been revised

Sources: Ministry of Commerce &amp; Industry and Ministry of Finance, Monrovia, Liberia.

**4.4: Volume of Imports of Petroleum Products-2006 - 2008**

(Volume in gals.)

<b>2006</b>	<b>Premium</b>	<b>Diesel</b>	<b>Kerosene</b>	<b>Jet fuel</b>	<b>Total</b>
Jan	1,413,708	2,080,578	0	0	3,494,286
Feb	2,601,264	2,606,370	417,740	1,116,280	6,741,654
Mar	2,696,295	4,100,806	0	0	6,797,101
Apr	802,958	1,953,194	24,218	671,764	3,452,134
May	1,075,728	2,056,158	0	1,051,861	4,183,747
Jun	3,089,896	1,729,213	96,625	0	4,915,734
Jul	721,468	1,797,769	97,181	947,779	3,564,197
Aug	1,214,768	3,072,659	93,371	111,000	4,491,798
Sep	4,396,842	3,491,974	64,114	0	7,952,930
Oct	1,112,353	1,749,385	139,094	1,413,789	4,414,621
Nov	1,500,875	2,509,587	0	0	4,010,462
Dec	699,432	2,481,145	0	124,477	3,305,054
<b>Total</b>	<b>21,325,587</b>	<b>29,628,838</b>	<b>932,343</b>	<b>5,436,950</b>	<b>57,323,718</b>

<b>2007</b>	<b>Premium</b>	<b>Diesel</b>	<b>Kerosene</b>	<b>Jet fuel</b>	<b>Total</b>
Jan	1,695,234	2,091,697	0	1,028,000	4,814,931
Feb	4,181,000	0	160,000	800,000	5,141,000
Mar	1,586,643	1,500,498	161,298	0	3,248,439
Apr	2,627,000	925,000	370,000	96,000	4,018,000
May	563,880	2,400,433	0	96,000	3,060,313
Jun	740,000	3,844,868	160,000	0	4,744,868
Jul	2,035,000	3,223,500	160,000	0	5,418,500
Aug	555,000	5,629,705	0	0	6,184,705
Sep	222,000	230,250	0	320,000	772,250
Oct	2,283,985	4,021,700	0	64,000	6,369,685
Nov	2,035,000	1,535,000	96,000	0	3,666,000
Dec	555,000	921,000	0	960,000	2,436,000
<b>Total</b>	<b>19,079,742</b>	<b>26,323,651</b>	<b>1,107,298</b>	<b>3,364,000</b>	<b>49,874,691</b>

<b>2008</b>	<b>Premium</b>	<b>Diesel</b>	<b>Kerosene</b>	<b>Jet fuel</b>	<b>Total</b>
Jan	1,110,000	1,228,000	0	0	2,338,000
Feb	0	4,175,200	0	0	4,175,200
Mar	10,923	0	0	2,755	13,678
Apr	3,875	3,000	0	300	7,175
May					0
Jun	7,500	12,000	0	0	19,500
<b>Total</b>	<b>1,132,298</b>	<b>5,418,200</b>	<b>0</b>	<b>3,055</b>	<b>6,553,553</b>

Source: Ministry of Finance, Monrovia, Liberia.