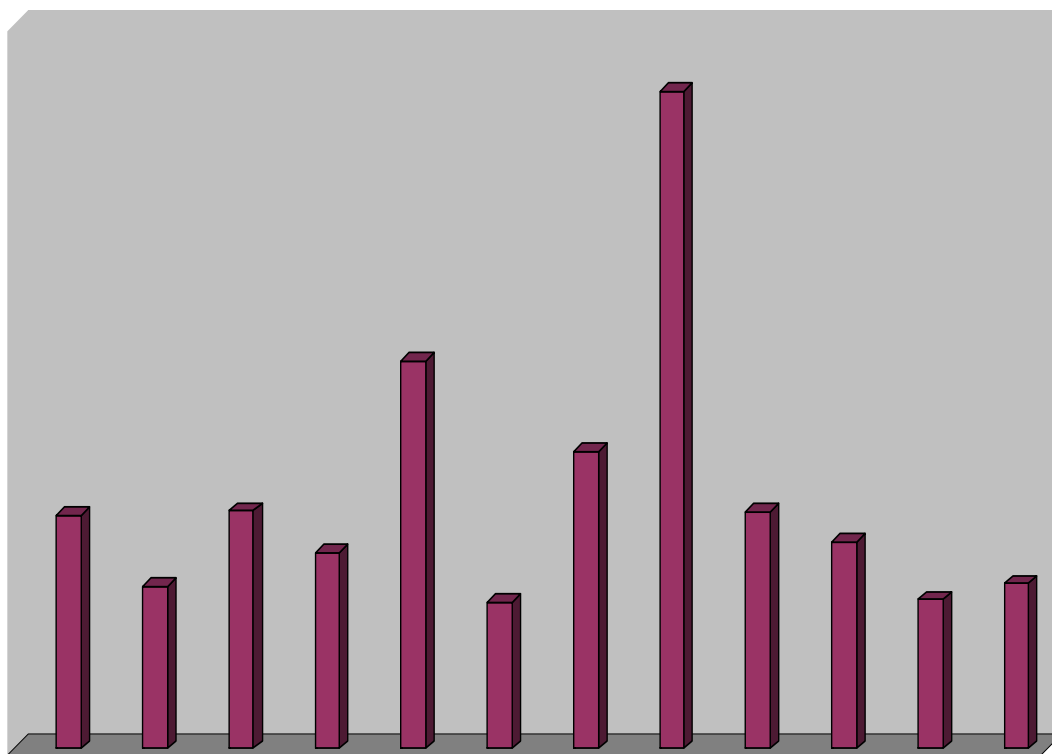




CENTRAL BANK OF LIBERIA



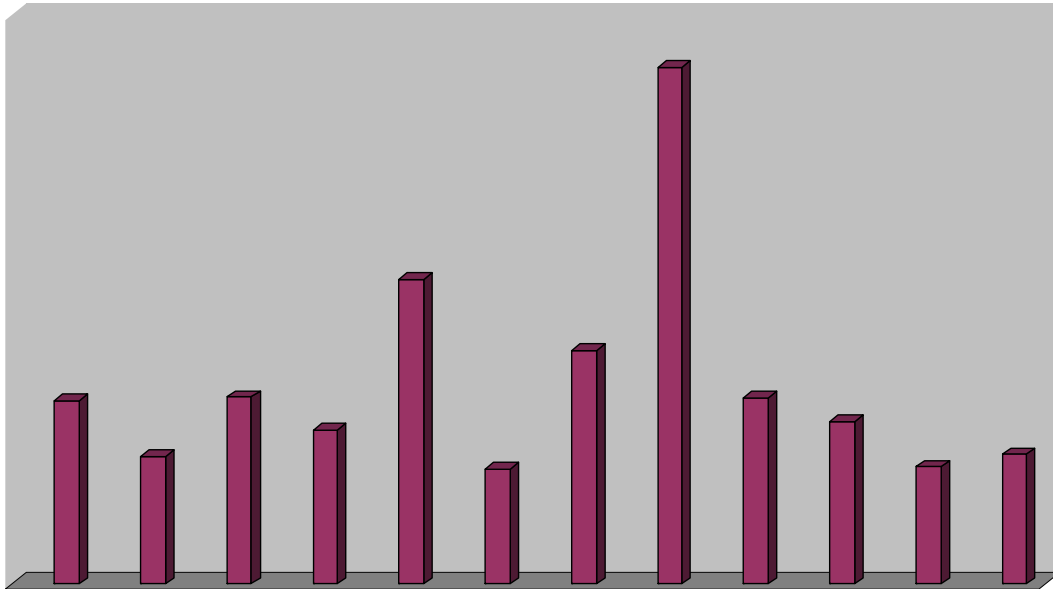
Liberia Financial STATISTICS

**Vol. 12, No.6
Nov - Dec, 2010**

Research, Policy and Planning Department
Monrovia, Liberia



CENTRAL BANK OF LIBERIA



Liberia Financial STATISTICS

THE LIBERIA FINANCIAL STATISTICS (LFS) is produced by the Bank's Research, Policy and Planning Department. Inquiries concerning this publication should be addressed to:

The Director
Research, Policy and Planning Department
Central Bank of Liberia
Warren and Carey Streets
P. O. Box 2048
Monrovia, Liberia

Telephone #s: 00(231/6516418/6553456

Fax #s: 00(231) 077059642

Swift :CBLRLRLM

Table of Contents

<i>INTRODUCTION</i>		-ii-
	<i>Statistics</i>	<i>I - 61</i>
1	<i>MONEY AND BANKING</i>	<i>I – 35</i>
1.1a	Depository Corporations Survey – 2008	1-2
1.1b	Depository Corporations Survey –2009	3-4
1.1c	Depository Corporations Survey—2010	5-6
1.2a	Sectoral Balance Sheet of Other Depository Corp. –2008	7-8
1.2b	Sectoral Balance Sheet of Other Depository Corp. –2009	9-10
1.2c	Sectoral Balance Sheet of Other Depository Corp. –2010	11-12
1.3a	Sectoral Balance Sheet of Central Bank of Liberia – 2008	13-14
1.3b	Sectoral Balance Sheet of Central Bank of Liberia – 2009	15-16
1.3c	Sectoral Balance Sheet of Central Bank of Liberia – 2010	17-18
1.4a	Commercial Banks’ Loans by Economic Sectors – 2008	19-20
1.4b	Commercial Banks’ Loans by Economic Sectors – 2009	21-22
1.4c	Commercial Banks’ Loans by Economic Sectors – 2010	23-24
1.5	Commercial Banks’ Interest Rate – 2008- 2010	25
1.6	Liberian Dollar Exchange Rates – Period Averages – 2008-2010	26
1.7	Liberian Dollar Exchange Rates –End of Period – 2008-2010	27
1.8	Liberian Dollar Exchange Rates – Sept-Oct, 2010	28
1.9	Commercial Banks’ Inflows and Outflows – 2008-2010	29
1.10a	Central Bank of Liberia FX Auction – 2008	30-31
1.10b	Central Bank of Liberia FX Auction – 2009	32-33
1.10c	Central Bank of Liberia FX Auction – 2010	34-35
2	<i>REAL SECTOR</i>	<i>36-53</i>
2.1a	Harmonized Consumer Price Index – 2008	36
2.1b	Harmonized Consumer Price Index – 2009	37
2.1c	Harmonized Consumer Price Index – 2010	38
2.2a	MCPI Inflation Rates – 2008	39
2.2b	MCPI Inflation Rates – 2009	40
2.2c	MCPI Inflation Rates – 2010	41
2.3a	Key Output Volume – 2008	42-43
2.3b	Key Output Volume – 2009	44-45
2.3c	Key Output Volume – 2010	46-47
2.4a	Key Output Value – 2008	48-49
2.4b	Key Output Value – 2009	50-51
2.4c	Key Output Value – 2010	52-53
3	<i>GOVERNMENT FINANCE</i>	<i>54-55</i>
3.1	Government Revenue – 2008-2010	54
3.2	Government Expenditure – 2008-2010	54
3.3	Functional Classification of Government Expenditure – 2008-2010	55
3.4	Summary Estimates of Liberia’s Public Debt Stock and Status as at October 31, 2010	55
4	<i>EXTERNAL TRADE</i>	<i>56-61</i>
4.1	Exports and Imports – 2008-2010	56
4.2a	Commodity Composition of Exports – 2008	56
4.2b	Commodity Composition of Exports – 2009	57
4.2c	Commodity Composition of Exports – 2010	57
4.3a	Commodity Composition of Imports – 2008	58
4.3b	Commodity Composition of Imports – 2009	59
4.3c	Commodity Composition of Imports – 2010	60
4.4a	Volume of Imports of Petroleum Products – 2008	61
4.4b	Volume of Imports of Petroleum Products – 2009	61
4.4c	Volume of Imports of Petroleum Products – 2010	61

Introduction

The Liberia Financial Statistics (LFS) report is updated and published at the end of every two months for use by researchers, policy-makers, academicians and the general public. The information contained within the LFS report is financial and macroeconomic data collected from various sources of the Liberia economy.

The data composition of LFS report is obtained from four (4) sectors of the Liberian economy: fiscal, monetary, real, and the external sectors. It is gathered from both the public and private sectors.

This is the sixth and last edition for 2010, which contains data from January 2008 to December, 2010. The cover page of this edition illustrates the commodity composition of exports from January to December, 2010.

The Management of the Central Bank of Liberia (CBL) is grateful to all of its data contributors, and compilers who mutually participated in the compilation of this report, and anticipates that such cooperation will continue to exist.

MONEY AND BANKING

CENTRAL BANK OF LIBERIA

1.1a: Depository Corporations Survey-2008

Millions of Liberian Dollars

	Jan-08	Feb-08	Mar-08	Apr-08	May-08	Jun-08
Foreign Assets (net)	(43,952.6)	(43,401.5)	(44,650.0)	(43,321.5)	(44,049.5)	(44,503.2)
Foreign Assets (MA)	8,054.1	8,074.1	8,859.2	9,359.3	9,441.6	9,417.1
(-) Foreign Liabilities (MA)	55,480.8	55,426.9	57,425.8	57,011.4	57,358.9	57,814.4
Foreign Assets (CoB)	4,088.5	4,389.8	4,646.6	5,024.5	4,592.3	4,679.9
(-) Foreign Liabilities (CoB)	614.4	438.6	729.9	693.8	724.6	785.8
Domestic Credit	73,550.7	73,533.3	75,653.9	75,570.2	76,294.3	76,962.3
Claims on General Government (net)	68,582.9	68,269.2	70,236.2	69,848.4	70,322.4	71,126.3
Claims on General Government (MA)	71,693.3	71,382.8	73,406.9	73,108.6	73,576.8	74,030.4
(-) General Government Deposits (MA)	3,641.1	3,676.8	3,720.4	3,829.2	3,884.7	3,554.1
Claims on General Government (CoB)	749.2	737.4	737.3	741.6	746.0	746.0
(-) General Government Deposits (CoB)	218.6	174.2	187.6	172.6	115.7	96.0
Claims on Public Corporations (MA)	0.0	0.0	0.0	0.0	0.0	0.0
Claims on Public Corporations (CoB)	167.5	252.4	71.7	65.6	58.8	75.2
Claims on Private Sector (MA)	197.1	195.5	195.0	198.1	200.2	244.9
Claims on Private Sector (CoB)	4,584.5	4,800.2	5,149.7	5,457.8	5,712.5	5,514.9
Claims on NBFIs (MA)	0.0	0.0	0.0	0.0	0.0	0.0
Claims on NBFIs (CoB)	18.8	16.0	1.3	0.2	0.4	1.0
Money	13,109.4	14,014.9	14,016.9	14,643.6	14,856.5	14,552.6
Currency Outside Banks (MA)	3,013.2	2,968.4	2,953.6	2,961.1	2,916.4	2,905.3
Liberian Currency in Circulation (MA)	3,489.1	3,389.1	3,383.5	3,397.2	3,341.3	3,336.7
(-) Currency Holdings (CoB)	475.9	420.7	429.8	436.1	424.9	431.5
Demand Deposits	6,985.7	7,741.7	7,641.6	8,080.7	8,161.9	7,733.2
Demand Deposits (MA)	592.4	624.0	623.2	628.0	772.4	614.6
Demand Deposits (CoB)	6,393.3	7,117.8	7,018.4	7,452.7	7,389.5	7,118.6
Other Deposits	3,110.5	3,304.8	3,421.7	3,601.8	3,778.2	3,914.1
Other Deposits (MA)	0.0	0.0	0.0	0.0	0.0	0.0
Time and Savings Deposits (CoB)	3,110.5	3,304.8	3,421.7	3,601.8	3,778.2	3,914.1
Bonds and Securities (CoB)	0.0	0.0	0.0	0.0	0.0	0.0
Restricted Deposits	48.0	48.0	48.0	47.9	47.6	44.8
Capital Accounts	19,515.2	19,334.0	19,466.1	19,791.8	19,745.5	19,844.4
Capital Accounts (MA)	16,078.8	15,802.1	15,909.6	16,017.3	16,188.7	16,231.6
Capital Accounts (CoB)	3,436.5	3,531.9	3,556.5	3,774.5	3,556.8	3,612.7
Other Items (net)	(3,074.4)	(3,265.2)	(2,527.2)	(2,234.6)	(2,404.9)	(1,982.6)
Unclassified Liabilities (MA)	5,868.2	5,827.4	12,766.5	12,712.1	12,665.1	12,765.0
(-) Unclassified Assets (MA)	7,601.0	7,548.7	13,678.5	13,581.5	13,660.2	13,764.6
(-) Unclassified Assets (CoB)	1,922.0	1,792.9	1,931.0	1,587.8	1,615.9	1,595.2
Unclassified Liabilities (CoB)	1,719.3	1,395.3	1,330.9	1,330.3	1,412.9	1,674.2
Commercial Banks' Deposits (MA)	2,688.0	2,761.7	2,876.7	2,956.7	3,080.5	3,422.5
(-) Reserves (CoB)	3,191.9	3,203.6	3,347.3	3,384.8	3,482.1	3,816.9
Currency Holdings (CoB)	475.9	420.7	429.8	436.1	424.9	431.5
Liabilities to Central Bank (CoB)	0.0	0.1	399.4	0.0	0.0	0.0
(-) Claims on Domestic Banks (MA)	25.4	29.7	284.9	30.5	59.5	25.5
(-) Claims on Central Bank of Liberia (CoB)	799.4	799.4	788.7	792.5	798.7	798.3
(-) Unbalanced Items	(286.2)	(296.0)	(300.1)	(292.6)	(372.0)	(275.3)
Vertical Check	0.0	(0.0)	0.0	(0.0)	0.0	0.0

NBFIs: Non-Bank Financial Institutions

Source: Central Bank of Liberia, Monrovia, Liberia.

MONEY AND BANKING

CENTRAL BANK OF LIBERIA

1.1a: Depository Corporations Survey-2008 - continued

Millions of Liberian Dollars

	Jul-08	Aug-08	Sep-08	Oct-08	Nov-08	Dec-08
Foreign Assets (net)	(44,544.5)	(44,005.9)	(44,452.8)	(41,622.1)	(41,499.5)	(43,137.2)
Foreign Assets (MA)	9,617.5	9,783.2	9,324.7	10,118.4	9,779.7	10,294.9
(-) Foreign Liabilities (MA)	57,813.4	57,810.8	58,676.8	56,094.8	56,095.8	59,206.3
Foreign Assets (CoB)	4,387.9	4,852.4	5,704.5	5,246.3	5,670.5	6,385.6
(-) Foreign Liabilities (CoB)	736.4	830.7	805.3	892.0	853.9	611.4
Domestic Credit	76,783.5	76,656.7	75,044.0	72,867.9	73,451.9	76,953.0
Claims on General Government (net)	70,956.4	70,618.9	68,666.5	66,371.9	66,831.5	70,242.0
Claims on General Government (MA)	74,030.6	74,027.5	71,338.6	68,928.7	68,865.5	71,994.2
(-) General Government Deposits (MA)	3,737.5	3,927.3	3,176.4	3,049.8	2,536.9	2,243.9
Claims on General Government (CoB)	746.4	605.9	605.5	605.5	603.2	593.3
(-) General Government Deposits (CoB)	83.1	87.2	101.2	112.6	100.3	101.6
Claims on Public Corporations (MA)	0.0	0.0	0.0	0.0	0.0	0.0
Claims on Public Corporations (CoB)	66.5	55.7	62.1	62.7	59.9	64.4
Claims on Private Sector (MA)	30.7	31.8	31.6	31.5	31.5	113.0
Claims on Private Sector (CoB)	5,728.8	5,948.7	6,282.8	6,400.4	6,526.3	6,533.1
Claims on NBFIs (MA)	0.0	0.0	0.0	0.0	0.0	0.0
Claims on NBFIs (CoB)	1.2	1.5	0.9	1.3	2.7	0.5
Money	14,530.0	15,248.1	16,057.9	16,584.0	17,051.9	17,931.6
Currency Outside Banks (MA)	2,893.2	2,812.3	2,894.0	3,063.3	3,356.9	3,637.1
Liberian Currency in Circulation (MA)	3,409.7	3,335.9	3,358.7	3,433.7	3,767.6	4,090.0
(-) Currency Holdings (CoB)	516.5	523.6	464.7	370.3	410.7	452.9
Demand Deposits	7,614.9	8,260.3	9,259.9	9,455.1	9,432.1	10,111.3
Demand Deposits (MA)	607.9	592.9	668.6	639.6	909.5	1,000.6
Demand Deposits (CoB)	7,006.9	7,667.4	8,591.2	8,815.5	8,522.6	9,110.8
Other Deposits	4,021.9	4,175.5	3,904.0	4,065.5	4,262.9	4,183.2
Other Deposits (MA)	0.0	0.0	0.0	0.0	0.0	0.0
Time and Savings Deposits (CoB)	4,021.9	4,175.5	3,904.0	4,065.5	4,262.9	4,183.2
Bonds and Securities (CoB)	0.0	0.0	0.0	0.0	0.0	0.0
Restricted Deposits	47.2	47.2	46.7	46.7	47.3	47.3
Capital Accounts	20,268.6	20,147.3	20,070.5	20,046.5	20,042.6	20,296.7
Capital Accounts (MA)	16,241.8	16,247.1	16,156.4	16,059.7	15,921.5	16,213.8
Capital Accounts (CoB)	4,026.8	3,900.3	3,914.1	3,986.8	4,121.1	4,082.8
Other Items (net)	(2,606.7)	(2,791.9)	(5,583.9)	(5,431.4)	(5,189.5)	(4,459.7)
Unclassified Liabilities (MA)	12,779.5	12,777.1	8,680.6	8,334.6	8,313.5	9,304.6
(-) Unclassified Assets (MA)	13,974.3	13,978.9	13,343.7	12,768.2	12,704.6	13,188.7
(-) Unclassified Assets (CoB)	1,945.1	1,675.6	1,634.2	1,886.3	1,925.7	2,038.5
Unclassified Liabilities (CoB)	1,968.1	1,476.8	1,936.6	1,519.7	1,973.8	2,222.5
Commercial Banks' Deposits (MA)	3,369.6	3,426.6	3,662.2	4,553.3	4,361.5	3,999.1
(-) Reserves (CoB)	4,197.6	4,228.1	4,193.1	4,420.2	4,280.8	3,922.0
Currency Holdings (CoB)	516.5	523.6	464.7	370.3	410.7	452.9
Liabilities to Central Bank (CoB)	0.0	0.0	0.0	0.0	0.0	0.0
(-) Claims on Domestic Banks (MA)	37.8	38.8	42.9	28.7	100.7	78.5
(-) Claims on Central Bank of Liberia (CoB)	798.3	798.3	797.2	797.2	794.1	803.3
(-) Unbalanced Items	(287.5)	(276.1)	(316.9)	(308.7)	(443.1)	(407.7)
Vertical Check	0.0	0.0	0.0	0.0	(0.0)	(0.0)

NBFIs: Non-Bank Financial Institutions

Source: Central Bank of Liberia, Monrovia, Liberia.

MONEY AND BANKING

CENTRAL BANK OF LIBERIA

1.1b: Depository Corporations Survey-2009

Millions of Liberian Dollars

	Jan-09	Feb-09	Mar-09	Apr-09	May-09	Jun-09
Foreign Assets (net)	(42,273.0)	(40,607.7)	(42,250.6)	(41,442.9)	(41,137.7)	(39,937.5)
Foreign Assets (MA)	11,102.1	10,613.3	11,133.0	11,098.0	11,971.2	12,736.6
(-) Foreign Liabilities (MA)	58,346.4	56,859.4	58,819.5	58,826.4	58,856.1	58,856.0
Foreign Assets (CoB)	5,525.4	6,405.0	6,188.7	6,977.3	6,570.1	7,008.7
(-) Foreign Liabilities (CoB)	554.1	766.6	752.9	691.8	822.9	826.8
Domestic Credit	75,620.8	74,509.5	76,198.7	77,268.4	79,134.3	78,579.0
Claims on General Government (net)	68,722.7	67,303.5	69,032.2	69,687.2	70,611.1	69,786.4
Claims on General Government (MA)	71,316.8	69,930.0	71,774.6	72,023.6	73,019.3	73,019.3
(-) General Government Deposits (MA)	3,102.0	3,135.4	3,256.2	2,848.1	2,934.5	3,622.5
Claims on General Government (CoB)	594.4	594.4	603.6	596.2	632.1	525.2
(-) General Government Deposits (CoB)	86.5	85.5	89.8	84.5	105.7	135.6
Claims on Public Corporations (MA)	0.0	0.0	0.0	0.0	0.0	0.0
Claims on Public Corporations (CoB)	407.1	509.9	579.1	724.9	760.7	852.5
Claims on Private Sector (MA)	106.9	349.9	191.6	196.5	208.3	207.4
Claims on Private Sector (CoB)	6,382.3	6,345.4	6,395.1	6,659.1	7,553.4	7,731.9
Claims on NBFIs (MA)	0.0	0.0	0.0	0.0	0.0	0.0
Claims on NBFIs (CoB)	1.7	0.8	0.7	0.7	0.8	0.8
Money	17,727.5	18,310.8	18,651.1	19,920.4	21,363.3	21,059.1
Currency Outside Banks (MA)	3,165.2	3,159.7	3,210.5	3,142.0	3,176.4	3,249.6
Liberian Currency in Circulation (MA)	4,025.4	3,966.7	3,896.4	3,843.2	3,823.7	3,800.9
(-) Currency Holdings (CoB)	860.3	806.9	686.0	701.2	647.3	551.3
Demand Deposits	10,220.7	10,820.2	10,942.9	12,051.1	13,164.9	12,438.8
Demand Deposits (MA)	980.4	1,044.6	932.7	1,096.6	1,144.0	1,213.2
Demand Deposits (CoB)	9,240.3	9,775.6	10,010.3	10,954.5	12,020.9	11,225.7
Other Deposits	4,341.7	4,330.9	4,497.8	4,727.2	5,021.9	5,370.7
Other Deposits (MA)	0.0	0.0	0.0	0.0	0.0	0.0
Time and Savings Deposits (CoB)	4,341.7	4,330.9	4,497.8	4,727.2	5,021.9	5,370.7
Bonds and Securities (CoB)	0.0	0.0	0.0	0.0	0.0	0.0
Restricted Deposits	47.3	47.3	47.3	47.3	47.3	47.3
Capital Accounts	20,241.0	20,845.4	21,592.1	22,616.5	23,964.5	23,722.1
Capital Accounts (MA)	16,072.6	16,049.7	16,410.9	16,687.9	17,827.4	17,829.7
Capital Accounts (CoB)	4,168.4	4,795.7	5,181.2	5,928.6	6,137.2	5,892.4
Other Items (net)	(4,668.1)	(5,301.8)	(6,342.5)	(6,758.6)	(7,378.5)	(6,187.0)
Unclassified Liabilities (MA)	9,445.4	9,360.0	9,546.9	9,568.4	9,661.7	9,651.6
(-) Unclassified Assets (MA)	13,003.7	12,673.1	13,095.4	13,094.6	13,094.0	13,093.2
(-) Unclassified Assets (CoB)	2,274.7	2,940.6	3,191.8	2,961.0	3,352.9	3,361.5
Unclassified Liabilities (CoB)	2,194.2	2,596.8	2,015.3	1,375.0	1,058.4	1,840.1
Commercial Banks' Deposits (MA)	4,221.1	3,832.3	4,317.2	4,332.0	4,890.0	4,784.1
(-) Reserves (CoB)	4,618.6	4,774.1	4,794.9	5,036.6	5,441.9	4,955.1
Currency Holdings (CoB)	860.3	806.9	686.0	701.2	647.3	551.3
Liabilities to Central Bank (CoB)	0.0	0.0	0.0	0.0	0.0	0.0
(-) Claims on Domestic Banks (MA)	219.8	202.8	581.7	287.8	337.9	244.1
(-) Claims on Central Bank of Liberia (CoB)	809.5	809.5	821.9	834.2	883.7	884.1
(-) Unbalanced Items	(462.7)	(497.7)	(422.2)	(521.0)	(525.3)	(476.2)
Vertical Check	(0.0)	0.0	(0.0)	(0.0)	(0.0)	(0.0)

NBFIs: Non-Bank Financial Institutions

Source: Central Bank of Liberia, Monrovia, Liberia.

MONEY AND BANKING

CENTRAL BANK OF LIBERIA

1.1b: Depository Corporations Survey-2009 - continued

Millions of Liberian Dollars

	Jul-09	Aug-09	Sep-09	Oct-09	Nov-09	Dec-09
Foreign Assets (net)	(47,561.7)	(48,155.5)	(49,567.7)	(49,226.9)	(47,186.8)	(47,518.1)
Foreign Assets (MA)	13,935.3	24,796.8	25,283.4	24,994.3	24,125.2	26,409.6
(-) Foreign Liabilities (MA)	67,782.3	79,922.1	81,113.3	79,698.4	77,308.9	79,907.1
Foreign Assets (CoB)	7,141.5	7,842.2	7,294.7	6,414.3	6,853.1	6,799.4
(-) Foreign Liabilities (CoB)	856.3	872.4	1,032.4	937.2	856.1	820.1
Domestic Credit	84,990.2	87,070.6	88,066.4	86,351.0	83,718.8	87,269.5
Claims on General Government (net)	76,050.5	77,414.7	78,164.7	76,499.6	73,971.7	76,379.6
Claims on General Government (MA)	79,303.8	80,624.3	80,790.5	79,337.9	76,744.8	79,127.7
(-) General Government Deposits (MA)	3,754.9	3,767.6	3,149.1	3,356.6	3,194.2	3,239.3
Claims on General Government (CoB)	625.3	664.5	628.5	628.4	561.3	677.7
(-) General Government Deposits (CoB)	123.7	106.6	105.3	110.1	140.2	186.6
Claims on Public Corporations (MA)	0.0	0.0	0.0	0.0	0.0	0.0
Claims on Public Corporations (CoB)	1,025.0	871.8	1,040.9	1,033.7	1,133.3	1,264.2
Claims on Private Sector (MA)	216.6	258.9	177.3	173.2	96.8	123.5
Claims on Private Sector (CoB)	7,698.1	8,524.5	8,682.8	8,643.8	8,516.2	9,502.1
Claims on NBFIs (MA)	0.0	0.0	0.0	0.0	0.0	0.0
Claims on NBFIs (CoB)	0.0	0.7	0.7	0.7	0.8	0.1
Money	21,488.9	23,463.2	23,352.7	24,049.2	23,274.7	25,770.6
Currency Outside Banks (MA)	3,343.1	3,234.8	3,330.7	3,381.6	3,573.1	4,161.8
Liberian Currency in Circulation (MA)	3,892.4	3,923.6	3,979.3	3,903.3	3,930.9	4,583.4
(-) Currency Holdings (CoB)	549.2	688.8	648.6	521.7	357.8	421.6
Demand Deposits	12,701.1	14,519.1	14,025.3	14,582.3	13,776.0	15,724.4
Demand Deposits (MA)	1,209.6	1,213.7	1,209.2	1,584.3	1,485.7	1,535.3
Demand Deposits (CoB)	11,491.5	13,305.4	12,816.2	12,998.0	12,290.2	14,189.1
Other Deposits	5,444.6	5,709.3	5,996.7	6,085.3	5,925.7	5,884.4
Other Deposits (MA)	0.0	0.0	0.0	0.0	0.0	0.0
Time and Savings Deposits (CoB)	5,444.6	5,709.3	5,996.7	6,085.3	5,925.7	5,884.4
Bonds and Securities (CoB)	0.0	0.0	0.0	0.0	0.0	0.0
Restricted Deposits	47.3	47.3	47.3	47.3	47.3	47.3
Capital Accounts	24,783.0	25,272.7	25,176.9	24,578.8	23,639.5	24,578.0
Capital Accounts (MA)	18,468.6	18,710.6	18,568.0	18,048.4	17,134.0	17,869.4
Capital Accounts (CoB)	6,314.4	6,562.2	6,608.9	6,530.4	6,505.6	6,708.6
Other Items (net)	(8,890.7)	(9,868.1)	(10,078.3)	(11,551.3)	(10,429.6)	(10,644.5)
Unclassified Liabilities (MA)	9,170.5	9,340.5	9,388.4	9,226.6	8,888.2	9,237.2
(-) Unclassified Assets (MA)	14,839.4	15,105.6	15,261.8	14,997.3	14,630.0	14,949.8
(-) Unclassified Assets (CoB)	3,239.5	3,610.2	3,627.0	3,745.2	3,900.1	4,099.1
Unclassified Liabilities (CoB)	1,692.0	1,155.3	919.5	96.6	1,019.7	1,200.6
Commercial Banks' Deposits (MA)	4,892.6	4,770.5	4,846.6	4,731.4	4,531.0	5,108.3
(-) Reserves (CoB)	5,322.5	5,317.4	5,330.8	5,436.4	4,954.7	5,791.6
Currency Holdings (CoB)	549.2	688.8	648.6	521.7	357.8	421.6
Liabilities to Central Bank (CoB)	0.0	0.0	0.0	0.0	0.0	0.0
(-) Claims on Domestic Banks (MA)	316.0	304.8	229.7	305.0	193.6	242.3
(-) Claims on Central Bank of Liberia (CoB)	899.1	908.4	902.2	883.7	846.6	883.7
(-) Unbalanced Items	(578.6)	(578.8)	(529.9)	(759.9)	(701.3)	(645.8)
Vertical Check	(0.0)	0.0	(0.0)	(0.0)	(0.0)	(0.0)

NBFIs: Non-Bank Financial Institutions

Source : Central Bank of Liberia, Monrovia, Liberia.

MONEY AND BANKING

1.1c: Depository Corporations Survey- 2010

Millions of Liberian Dollars

	Jan-10	Feb-10	March-10	April-10	May-10	June-10
Foreign Assets (net)	(45,592.3)	(44,775.8)	(43,989.7)	(42,834.8)	(41,233.1)	17,674.3
Foreign Assets (MA)	28,454.6	28,779.7	27,656.5	27,818.5	27,213.4	28,444.1
(-) Foreign Liabilities (MA)	80,083.7	79,526.2	77,700.5	77,338.6	75,468.9	17,884.4
Foreign Assets (CoB)	6,813.0	6,920.9	6,901.6	7,633.1	7,798.5	8,067.3
(-) Foreign Liabilities (CoB)	776.2	950.2	847.3	947.7	776.2	952.7
Domestic Credit	86,066.5	86,281.4	84,423.5	84,198.1	82,863.3	25,418.0
Claims on General Government (net)	75,026.2	74,957.8	73,569.2	73,189.2	71,798.0	13,887.2
Claims on General Government (MA)	79,610.6	79,306.3	77,668.4	77,391.9	75,963.7	18,906.9
(-) General Government Deposits (MA)	4,899.1	4,676.4	4,447.6	4,411.1	4,375.7	5,284.4
Claims on General Government (CoB)	507.6	500.3	493.4	482.6	482.6	489.4
(-) General Government Deposits (CoB)	192.9	172.4	145.0	274.3	272.6	224.7
Claims on Public Corporations (MA)	0.0	0.0	0.0	0.0	0.0	0.0
Claims on Public Corporations (CoB)	1,565.7	1,566.4	1,679.5	1,942.2	1,873.9	2,038.0
Claims on Private Sector (MA)	123.8	126.8	45.7	44.8	45.3	60.8
Claims on Private Sector (CoB)	9,344.5	9,623.2	9,128.1	9,013.0	9,136.1	9,412.4
Claims on NBFIs (MA)	0.0	0.0	0.0	0.0	0.0	0.0
Claims on NBFIs (CoB)	6.3	7.3	1.0	9.0	10.1	19.7
Money	24,357.6	25,001.4	24,475.6	26,402.4	26,314.7	27,079.1
Currency Outside Banks (MA)	3,738.0	3,790.8	3,761.7	3,531.0	3,544.5	3,598.0
Liberian Currency in Circulation (MA)	4,460.0	4,461.6	4,389.4	4,269.0	4,248.8	4,413.1
(-) Currency Holdings (CoB)	721.9	670.8	627.7	738.0	704.3	815.1
Demand Deposits	14,313.9	14,848.3	14,693.9	16,201.0	16,030.2	16,542.3
Demand Deposits (MA)	1,571.3	1,587.8	1,577.9	1,626.7	1,612.7	1,626.8
Demand Deposits (CoB)	12,742.7	13,260.5	13,116.0	14,574.3	14,417.6	14,915.5
Other Deposits	6,305.6	6,362.2	6,020.0	6,670.4	6,739.9	6,938.8
Other Deposits (MA)	97.1	86.3	73.5	96.6	87.9	73.4
Time and Savings Deposits (CoB)	6,208.5	6,276.0	5,946.6	6,573.8	6,652.1	6,865.4
Bonds and Securities (CoB)	0.0	0.0	0.0	0.0	0.0	0.0
Restricted Deposits	55.8	55.8	55.8	55.8	55.4	55.4
Capital Accounts	25,293.4	25,812.4	24,917.5	25,437.3	25,287.2	25,422.4
Capital Accounts (MA)	18,344.4	18,511.3	18,140.2	18,117.3	18,064.4	18,309.2
Capital Accounts (CoB)	6,949.0	7,301.2	6,777.3	7,319.9	7,222.8	7,113.2
Other Items (net)	(9,135.4)	(9,277.7)	(8,941.6)	(10,435.5)	(9,939.2)	(9,391.3)
Unclassified Liabilities (MA)	9,226.2	9,152.5	9,041.3	9,147.9	8,819.9	9,515.0
(-) Unclassified Assets (MA)	14,981.0	14,876.7	14,617.7	14,554.7	14,210.3	14,381.1
(-) Unclassified Assets (CoB)	5,793.9	5,179.4	4,198.2	4,953.8	5,633.7	5,596.0
Unclassified Liabilities (CoB)	4,200.6	3,371.1	2,618.8	1,904.3	3,088.2	3,065.0
Commercial Banks' Deposits (MA)	5,486.6	6,111.6	5,717.0	5,871.9	6,195.9	5,989.1
(-) Reserves (CoB)	6,174.5	6,662.1	6,189.6	6,701.3	6,634.6	6,644.6
Currency Holdings (CoB)	721.9	670.8	627.7	738.0	704.3	815.1
Liabilities to Central Bank (CoB)	0.0	0.0	0.0	0.0	0.0	0.0
(-) Claims on Domestic Banks (MA)	230.2	248.0	327.4	272.9	652.5	502.5
(-) Claims on Central Bank of Liberia (CoB)	901.2	908.9	896.5	896.5	896.5	905.8
(-) Unbalanced Items	(689.9)	(708.7)	(717.0)	(718.5)	(719.8)	(745.5)
Vertical Check	(0.0)	0.0	0.0	0.0	0.0	0.0

NBFIs: Non-Bank Financial Institutions

Source : Central Bank of Liberia, Monrovia, Liberia.

MONEY AND BANKING

CENTRAL BANK OF LIBERIA

1.1c: Depository Corporations Survey- 2010 (continued)

Millions of Liberian Dollars

	Jul-10	Aug-10	Sept-10	Oct-10	Nov-10	Dec-10
Foreign Assets (net)	17,132.6	17,580.3	18,529.2	19,743.1	20,380.8	23,629.5
Foreign Assets (MA)	29,033.9	29,878.3	30,432.1	32,621.0	31,885.7	33,388.0
(-) Foreign Liabilities (MA)	18,901.2	18,782.7	19,354.1	19,340.5	18,201.0	19,706.3
Foreign Assets (CoB)	7,888.6	7,345.1	8,225.8	7,393.1	7,542.0	10,957.1
(-) Foreign Liabilities (CoB)	888.6	860.4	774.6	930.4	845.9	1,009.2
Domestic Credit	26,367.9	25,853.8	27,538.8	25,777.3	25,897.7	26,284.9
Claims on General Government (net)	14,310.5	13,439.9	13,984.5	11,923.5	12,067.5	12,013.4
Claims on General Government (MA)	18,969.1	18,969.1	18,969.1	18,782.4	18,222.3	18,720.2
(-) General Government Deposits (MA)	4,960.4	5,553.4	4,974.9	6,848.7	6,094.0	6,519.8
Claims on General Government (CoB)	489.4	489.4	478.5	462.8	448.3	461.2
(-) General Government Deposits (CoB)	187.6	465.2	488.3	473.0	509.0	648.2
Claims on Public Corporations (MA)	0.0	0.0	0.0	0.0	0.0	0.0
Claims on Public Corporations (CoB)	598.1	729.9	739.0	633.9	589.8	500.5
Claims on Private Sector (MA)	163.2	167.7	55.0	57.6	57.5	350.7
Claims on Private Sector (CoB)	11,225.5	11,433.7	12,663.4	13,066.5	13,097.7	13,325.7
Claims on NBFIs (MA)	0.0	0.0	0.0	0.0	0.0	0.0
Claims on NBFIs (CoB)	70.5	82.5	97.0	95.9	85.1	94.7
Money	27,520.4	27,514.5	29,501.5	29,696.7	30,415.1	33,028.7
Currency Outside Banks (MA)	3,831.4	3,671.6	3,795.9	4,013.5	4,337.0	5,007.9
Liberian Currency in Circulation (MA)	4,554.5	4,539.9	4,583.7	4,674.9	4,910.3	5,550.6
(-) Currency Holdings (CoB)	723.1	868.3	787.8	661.4	573.3	542.6
Demand Deposits	16,681.6	16,995.4	18,302.6	17,795.2	17,231.0	20,129.6
Demand Deposits (MA)	1,676.5	1,674.7	1,672.5	1,858.4	1,762.9	1,924.8
Demand Deposits (CoB)	15,005.1	15,320.7	16,630.1	15,936.9	15,468.1	18,204.7
Other Deposits	7,007.5	6,847.5	7,403.0	7,887.9	8,847.1	7,891.2
Other Deposits (MA)	69.1	59.2	37.0	69.8	821.7	318.5
Time and Savings Deposits (CoB)	6,938.4	6,788.4	7,365.9	7,818.1	8,025.4	7,572.7
Bonds and Securities (CoB)	0.0	0.0	0.0	0.0	0.0	0.0
Restricted Deposits	55.4	53.9	53.9	53.9	53.9	53.2
Capital Accounts	25,551.4	25,547.7	26,189.8	26,072.5	25,137.5	26,567.0
Capital Accounts (MA)	18,387.9	18,374.9	18,434.0	18,202.7	17,236.6	17,406.5
Capital Accounts (CoB)	7,163.6	7,172.8	7,755.8	7,869.8	7,900.9	9,160.5
Other Items (net)	(9,557.7)	(9,622.8)	(9,640.2)	(10,232.9)	(8,506.3)	(9,416.0)
Unclassified Liabilities (MA)	9,695.5	9,650.2	9,908.5	9,892.6	9,380.3	9,772.2
(-) Unclassified Assets (MA)	14,797.6	14,715.8	15,266.3	15,258.1	14,242.2	14,616.6
(-) Unclassified Assets (CoB)	5,315.7	5,518.7	5,555.7	5,801.3	5,831.1	5,773.4
Unclassified Liabilities (CoB)	3,031.6	3,180.4	3,406.5	3,175.0	3,636.4	3,534.4
Commercial Banks' Deposits (MA)	5,942.7	6,228.4	6,870.1	6,984.8	7,115.0	7,437.2
(-) Reserves (CoB)	6,754.7	7,317.1	7,790.4	7,887.6	7,957.4	8,209.6
Currency Holdings (CoB)	723.1	868.3	787.8	661.4	573.3	542.6
Liabilities to Central Bank (CoB)	0.0	0.0	0.0	0.0	0.0	53.6
(-) Claims on Domestic Banks (MA)	398.8	312.5	293.5	241.9	250.4	615.6
(-) Claims on Central Bank of Liberia (CoB)	908.9	906.5	906.5	897.3	869.5	895.6
(-) Unbalanced Items	(775.0)	(779.5)	(800.6)	(860.4)	(60.9)	(645.1)
Vertical Check	0.0	0.0	0.0	0.0	0.0	0.0

NBFIs: Non-Bank Financial Institutions

Source : Central Bank of Liberia, Monrovia, Liberia.

MONEY AND BANKING

CENTRAL BANK OF LIBERIA

1.2a: Sectoral Balance Sheet of Other Depository Corporations- 2008

Thousands of Liberian Dollars

	Jan-08	Feb-08	Mar-08	Apr-08	May-08	Jun-08
Assets						
Reserves	3,191,921	3,203,568	3,347,320	3,384,782	3,482,100	3,816,316
<i>of which: Cash on Hand: Coins/LD Notes</i>	475,915	420,680	429,828	436,107	424,921	431,466
Foreign Assets	4,088,460	4,389,815	4,646,555	5,024,479	4,592,347	4,679,861
Claims on General Government	749,244	737,380	737,326	741,620	745,967	745,967
Claims on Public Corporations	167,463	252,415	71,656	65,627	58,790	75,161
Claims on Private Sector	4,584,519	4,800,213	5,149,737	5,457,794	5,712,516	5,514,944
Claims on Central Bank of Liberia	799,432	799,432	788,681	792,508	798,686	798,296
Claims on NBFIs	18,850	15,994	1,297	180	356	1,006
Unclassified Assets	1,921,953	1,792,912	1,930,959	1,587,847	1,615,882	1,595,190
Total Assets	15,521,841	15,991,729	16,673,532	17,054,837	17,006,645	17,226,741
	Jan-08	Feb-08	Mar-08	Apr-08	May-08	Jun-08
Liabilities						
Demand Deposits	6,393,258	7,117,765	7,018,379	7,452,653	7,389,540	7,118,557
Time and Savings Deposits	3,110,529	3,304,777	3,421,656	3,601,835	3,778,246	3,914,100
Restricted Deposits	29,190	29,190	29,190	29,116	28,844	28,397
Bonds and Securities	0	0	0	0	0	0
Foreign Liabilities	614,415	438,568	729,901	693,833	724,570	785,769
Government Deposits	218,647	174,202	187,615	172,599	115,704	95,962
Liabilities to Central Bank of Liberia	0	65	399,392	0	0	0
Capital Accounts	3,436,456	3,531,892	3,556,504	3,774,492	3,556,829	3,610,120
Unclassified Liabilities	1,719,347	1,395,270	1,330,896	1,330,309	1,412,912	1,673,836
Total Liabilities	15,521,841	15,991,729	16,673,532	17,054,837	17,006,645	17,226,741
Vertical Check (Assets/Liabilities)	0	0	0	0	0	0

NBFIs: Non-Bank Financial Institutions

Source : Central Bank of Liberia, Monrovia, Liberia.

MONEY AND BANKING

CENTRAL BANK OF LIBERIA

1.2a: Sectoral Balance Sheet of Other Depository Corporations- 2008 - continued

Thousands of Liberian Dollars

	Jul-08	Aug-08	Sep-08	Oct-08	Nov-08	Dec-08
Assets						
Reserves	4,197,585	4,228,113	4,193,135	4,420,194	4,280,782	3,922,008
<i>of which: Cash on Hand: Coins/LD Notes</i>	516,466	523,563	464,688	370,337	410,746	452,871
Foreign Assets	4,387,918	4,852,380	5,704,500	5,246,343	5,670,480	6,385,613
Claims on General Government	746,375	605,873	605,546	605,546	603,162	593,312
Claims on Public Corporations	66,475	55,743	62,136	62,742	59,876	64,420
Claims on Private Sector	5,728,829	5,948,664	6,282,797	6,400,393	6,526,298	6,533,079
Claims on Central Bank of Liberia	798,296	798,296	797,168	797,168	794,079	803,347
Claims on NBFIs	1,159	1,511	894	1,316	2,714	482
Unclassified Assets	1,945,064	1,675,630	1,634,151	1,886,265	1,925,739	2,038,542
Total Assets	17,871,701	18,166,211	19,280,327	19,419,967	19,863,129	20,340,802
	Jul-08	Aug-08	Sep-08	Oct-08	Nov-08	Dec-08
Liabilities						
Demand Deposits	7,006,925	7,667,401	8,591,244	8,815,511	8,522,585	9,110,754
Time and Savings Deposits	4,021,882	4,175,494	3,903,994	4,065,550	4,262,918	4,183,154
Restricted Deposits	28,397	28,387	27,882	27,882	28,567	28,567
Bonds and Securities	0	0	0	0	0	0
Foreign Liabilities	736,400	830,720	805,272	892,018	853,898	611,401
Government Deposits	83,147	87,164	101,215	112,553	100,282	101,622
Liabilities to Central Bank of Liberia	0	0	0	0	0	0
Capital Accounts	4,026,836	3,900,255	3,914,090	3,986,795	4,121,086	4,082,806
Unclassified Liabilities	1,968,115	1,476,791	1,936,629	1,519,658	1,973,793	2,222,498
Total Liabilities	17,871,701	18,166,210	19,280,327	19,419,967	19,863,129	20,340,802
Vertical Check (Assets/Liabilities)	0	0	0	0	0	0

NBFIs: Non-Bank Financial Institutions

Source : Central Bank of Liberia, Monrovia, Liberia.

MONEY AND BANKING

CENTRAL BANK OF LIBERIA

1.2b: Sectoral Balance Sheet of Other Depository Corporations - 2009

Thousands of Liberian Dollars

	Jan-09	Feb-09	Mar-09	Apr-09	May-09	Jun-09
Assets						
Reserves	4,618,624	4,774,050	4,794,949	5,036,633	5,441,930	4,955,069
<i>of which: Cash on Hand: Coins/LD Notes</i>	860,251	806,918	685,965	701,183	647,295	551,335
Foreign Assets	5,525,388	6,405,024	6,188,737	6,977,315	6,570,066	7,008,690
Claims on General Government	594,394	594,394	603,610	596,200	632,062	525,226
Claims on Public Corporations	407,142	509,929	579,086	724,930	760,746	852,511
Claims on Private Sector	6,382,317	6,345,374	6,395,107	6,659,051	7,553,358	7,731,857
Claims on Central Bank of Liberia	809,525	809,525	821,883	834,240	883,669	884,092
Claims on NBFIs	1,703	786	666	703	825	793
Unclassified Assets	2,274,650	2,940,551	3,191,828	2,961,026	3,352,932	3,361,533
Total Assets	20,613,744	22,379,633	22,575,865	23,790,099	25,195,587	25,319,770
	Jan-09	Feb-09	Mar-09	Apr-09	May-09	Jun-09
Liabilities						
Demand Deposits	9,240,310	9,775,575	10,010,270	10,954,508	12,020,944	11,225,682
Time and Savings Deposits	4,341,663	4,330,897	4,497,753	4,727,228	5,021,926	5,370,652
Restricted Deposits	28,567	28,567	28,567	28,567	28,567	28,567
Bonds and Securities	0	0	0	0	0	0
Foreign Liabilities	554,118	766,604	752,900	691,768	822,903	826,777
Government Deposits	86,496	85,510	89,830	84,480	105,707	135,628
Liabilities to Central Bank of Liberia	0	0	0	0	0	0
Capital Accounts	4,168,405	4,795,685	5,181,219	5,928,553	6,137,165	5,892,384
Unclassified Liabilities	2,194,186	2,596,796	2,015,327	1,374,996	1,058,374	1,840,080
Total Liabilities	20,613,744	22,379,633	22,575,865	23,790,099	25,195,587	25,319,770
					0	0
Vertical Check (Assets/Liabilities)	0	0	0	0	0	0

NBFIs: Non-Bank Financial Institutions

Source: Central Bank of Liberia, Monrovia, Liberia.

MONEY AND BANKING

CENTRAL BANK OF LIBERIA

1.2b: Sectoral Balance Sheet of Other Depository Corporations - 2009- continued

Thousands of Liberian Dollars

	Jul-09	Aug-09	Sep-09	Oct-09	Nov-09	Dec-09
Assets						
Reserves	5,322,529	5,317,428	5,330,824	5,436,430	4,954,690	5,791,600
<i>of which: Cash on Hand: Coins/LD Notes</i>	549,223	688,822	648,597	521,659	357,764	421,636
Foreign Assets	7,141,504	7,842,188	7,294,697	6,414,323	6,853,148	6,799,440
Claims on General Government	625,331	664,528	628,502	628,403	561,288	677,745
Claims on Public Corporations	1,025,031	871,833	1,040,898	1,033,713	1,133,260	1,264,230
Claims on Private Sector	7,698,068	8,524,509	8,682,783	8,643,813	8,516,239	9,502,127
Claims on Central Bank of Liberia	899,115	908,383	902,205	883,669	846,597	883,669
Claims on NBFIs	44	726	661	749	784	72
Unclassified Assets	3,239,485	3,610,166	3,626,985	3,745,202	3,900,058	4,099,072
Total Assets	25,951,107	27,739,760	27,507,554	26,786,302	26,766,064	29,017,954
	Jul-09	Aug-09	Sep-09	Oct-09	Nov-09	Dec-09
Liabilities						
Demand Deposits	11,491,490	13,305,410	12,816,182	12,997,983	12,290,227	14,189,103
Time and Savings Deposits	5,444,640	5,709,325	5,996,684	6,085,346	5,925,662	5,884,393
Restricted Deposits	28,567	28,567	28,567	28,567	28,567	28,567
Bonds and Securities	0	0	0	0	0	0
Foreign Liabilities	856,294	872,384	1,032,395	937,236	856,145	820,059
Government Deposits	123,722	106,632	105,255	110,132	140,163	186,587
Liabilities to Central Bank of Liberia	0	0	0	0	0	0
Capital Accounts	6,314,382	6,562,152	6,608,934	6,530,408	6,505,563	6,708,615
Unclassified Liabilities	1,692,012	1,155,291	919,537	96,630	1,019,738	1,200,631
Total Liabilities	25,951,107	27,739,760	27,507,554	26,786,302	26,766,064	29,017,954
Vertical Check (Assets/Liabilities)	0	0	0	0	0	0

NBFIs: Non-Bank Financial Institutions

Source: Central Bank of Liberia, Monrovia, Liberia.

MONEY AND BANKING

CENTRAL BANK OF LIBERIA

1.2c: Sectoral Balance Sheet of Other Depository Corporations - 2010

Thousands of Liberian Dollars

	Jan-10	Feb-10	Mar-10	Apr-10	May-10	Jun-10
Assets						
Reserves	6,174,491	6,662,125	6,189,634	6,701,321	6,634,582	6,644,633
<i>of which: Cash on Hand: C</i>	721,935	670,770	627,673	737,980	704,254	815,142
Foreign Assets	6,813,003	6,920,877	6,901,645	7,633,061	7,798,525	8,067,344
Claims on General Governm	507,600	500,250	493,351	482,625	482,625	489,375
Claims on Public Corporati	1,565,742	1,566,420	1,679,494	1,942,152	1,873,860	2,037,954
Claims on Private Sector	9,344,520	9,623,164	9,128,124	9,012,991	9,136,053	9,412,419
Claims on Central Bank of L	901,184	908,862	896,505	896,505	896,505	905,773
Claims on NBFIs	6,303	7,254	1,017	8,986	10,113	19,657
Unclassified Assets	5,793,903	5,179,401	4,198,236	4,953,777	5,633,739	5,595,950
Total Assets	31,106,746	31,368,354	29,488,007	31,631,419	32,466,002	33,173,106
	Jan-10	Feb-10	Mar-10	Apr-10	May-10	Jun-10
Liabilities						
Demand Deposits	12,742,665	13,260,481	13,115,999	14,574,345	14,417,562	14,915,456
Time and Savings Deposits	6,208,487	6,275,991	5,946,575	6,573,774	6,652,052	6,865,423
Restricted Deposits	36,980	36,985	36,985	36,985	36,632	36,632
Bonds and Securities	0	0	0	0	0	0
Foreign Liabilities	776,192	950,230	847,345	947,710	776,157	952,681
Government Deposits	192,909	172,398	144,965	274,327	272,563	224,680
Liabilities to Central Bank o	0	0	0	0	0	0
Capital Accounts	6,948,961	7,301,168	6,777,349	7,319,944	7,222,814	7,113,195
Unclassified Liabilities	4,200,553	3,371,101	2,618,790	1,904,333	3,088,221	3,065,040
Total Liabilities	31,106,746	31,368,354	29,488,007	31,631,419	32,466,002	33,173,106
Vertical Check (Assets/Lia	0	0	0	0	0	0

NBFIs: Non-Bank Financial Institutions

Source : Central Bank of Liberia, Monrovia, Liberia.

MONEY AND BANKING

CENTRAL BANK OF LIBERIA

1.2c: Sectoral Balance Sheet of Other Depository Corporations - 2010 (continued)

Thousands of Liberian Dollars

	Jul-10	Aug-10	Sep-10	Oct-10	Nov-10	Dec-10
Assets						
Reserves	6,754,660	7,317,092	7,790,393	7,887,626	7,957,353	8,209,588
<i>of which: Cash on Hand: Coins/LD Notes</i>	723,091	868,284	787,797	661,389	573,316	542,617
Foreign Assets	7,888,644	7,345,057	8,225,803	7,393,100	7,541,972	10,957,067
Claims on General Government	489,375	489,375	478,500	462,788	448,279	461,179
Claims on Public Corporations	598,135	729,937	738,980	633,914	589,845	500,477
Claims on Private Sector	11,225,520	11,433,728	12,663,390	13,066,475	13,097,722	13,325,657
Claims on Central Bank of Liberia	908,862	906,538	906,538	897,270	869,466	895,611
Claims on NBFIs	70,521	82,508	96,968	95,854	85,121	94,698
Unclassified Assets	5,315,690	5,518,703	5,555,718	5,801,346	5,831,144	5,773,423
Total Assets	33,251,407	33,822,938	36,456,290	36,238,372	36,420,903	40,217,700
	Jul-10	Aug-10	Sep-10	Oct-10	Nov-10	Dec-10
Liabilities						
Demand Deposits	15,005,053	15,320,742	16,630,139	15,936,873	15,468,096	18,204,714
Time and Savings Deposits	6,938,369	6,788,358	7,365,935	7,818,103	8,025,396	7,572,695
Restricted Deposits	36,632	35,127	35,127	35,127	35,127	34,412
Bonds and Securities	0	0	0	0	0	0
Foreign Liabilities	888,647	860,355	774,611	930,449	845,875	1,009,242
Government Deposits	187,588	465,153	488,256	473,000	509,034	648,156
Liabilities to Central Bank of Liberia	0	0	0	0	0	53,625
Capital Accounts	7,163,557	7,172,844	7,755,768	7,869,835	7,900,944	9,160,492
Unclassified Liabilities	3,031,561	3,180,358	3,406,454	3,174,984	3,636,431	3,534,364
Total Liabilities	33,251,407	33,822,938	36,456,290	36,238,372	36,420,903	40,217,700
Vertical Check (Assets/Liabilities)	0	0	0	0	0	0

NBFIs: Non-Bank Financial Institutions

Source : Central Bank of Liberia, Monrovia, Liberia.

MONEY AND BANKING

CENTRAL BANK OF LIBERIA

1.3a: Sectoral Balance Sheet of Central Bank of Liberia - 2008

Thousands of Liberian Dollars

	Jan-08	Feb-08	Mar-08	Apr-08	May-08	Jun-08
Assets						
Foreign Assets	8,054,117	8,074,064	8,859,167	9,359,273	9,441,557	9,417,110
Claims on General Government	71,693,324	71,382,812	73,406,885	73,108,609	73,576,815	74,030,440
Claims on Public Corporations	0	0	0	0	0	0
Claims on Private Sector	197,059	195,478	194,959	198,141	200,201	244,875
Claims on Domestic Banks	25,371	29,704	284,879	30,549	59,502	25,513
Claims on NBFIs	0	0	0	0	0	0
Unclassified Assets	7,601,016	7,548,682	13,678,493	13,581,470	13,660,173	13,764,582
Total Assets	87,570,888	87,230,741	96,424,383	96,278,041	96,938,249	97,482,520
	Jan-08	Feb-08	Mar-08	Apr-08	May-08	Jun-08
Liabilities						
Reserve Money	6,483,333	6,478,768	6,583,254	6,689,276	6,822,197	7,098,584
Other Deposits	0	0	0	0	0	0
Restricted Reserves	18,781	18,781	18,781	18,781	18,781	18,781
Foreign Liabilities	55,480,770	55,426,853	57,425,831	57,011,445	57,358,857	57,814,405
Liabilities to General Government	3,641,067	3,676,834	3,720,391	3,829,194	3,884,673	3,554,118
Capital Accounts	16,078,756	15,802,089	15,909,646	16,017,264	16,188,679	16,231,624
Unclassified Liabilities	5,868,182	5,827,417	12,766,481	12,712,081	12,665,061	12,765,007
Total Liabilities	87,570,888	87,230,741	96,424,384	96,278,041	96,938,249	97,482,520
Vertical Check (Assets/Liabilities)	0	0	(0)	0	0	0

NBFIs: Non-Bank Financial Institutions

Source: Central Bank of Liberia, Monrovia, Liberia.

MONEY AND BANKING

CENTRAL BANK OF LIBERIA

1.3a: Sectoral Balance Sheet of Central Bank of Liberia-2008 - continued

Thousands of Liberian Dollars

	Jul-08	Aug-08	Sep-08	Oct-08	Nov-08	Dec-08
Assets						
Foreign Assets	9,617,451	9,783,193	9,324,728	10,118,382	9,779,677	10,294,914
Claims on General Government	74,030,616	74,027,471	71,338,632	68,928,683	68,865,550	71,994,206
Claims on Public Corporations	0	0	0	0	0	0
Claims on Private Sector	30,656	31,849	31,597	31,522	31,506	112,998
Claims on Domestic Banks	37,754	38,841	42,915	28,728	100,659	78,508
Claims on NBFIs	0	0	0	0	0	0
Unclassified Assets	13,974,265	13,978,919	13,343,718	12,768,247	12,704,623	13,188,718
Total Assets	97,690,742	97,860,272	94,081,590	91,875,562	91,482,015	95,669,344
	Jul-08	Aug-08	Sep-08	Oct-08	Nov-08	Dec-08
Liabilities						
Reserve Money	7,099,764	7,079,299	7,372,546	8,317,865	8,595,530	8,681,920
Other Deposits	0	0	0	0	0	0
Restricted Reserves	18,781	18,781	18,781	18,781	18,781	18,781
Foreign Liabilities	57,813,425	57,810,758	58,676,780	56,094,774	56,095,778	59,206,313
Liabilities to General Government	3,737,478	3,927,276	3,176,415	3,049,791	2,536,903	2,243,853
Capital Accounts	16,241,772	16,247,090	16,156,419	16,059,740	15,921,535	16,213,844
Unclassified Liabilities	12,779,523	12,777,068	8,680,649	8,334,612	8,313,489	9,304,634
Total Liabilities	97,690,742	97,860,272	94,081,590	91,875,562	91,482,015	95,669,345
Vertical Check (Assets/Liabilities)	0	0	0	0	0	(0)

NBFIs: Non-Bank Financial Institutions

Source : Central Bank of Liberia, Monrovia, Liberia.

MONEY AND BANKING

CENTRAL BANK OF LIBERIA

1.3b: Sectoral Balance Sheet of Central Bank of Liberia - 2009

Thousands of Liberian Dollars

	Jan-09	Feb-09	Mar-09	Apr-09	May-09	Jun-09
Assets						
Foreign Assets	11,102,121	10,613,314	11,132,982	11,130,470	12,893,489	13,673,785
Claims on General Government	69,957,040	68,605,110	70,403,834	71,564,303	77,736,079	79,303,820
Claims on Public Corporations	0	0	0	0	0	0
Claims on Private Sector	106,946	349,908	191,609	196,519	208,294	207,415
Claims on Domestic Banks	219,822	202,846	581,686	287,841	337,939	244,065
Claims on NBFIs	0	0	0	0	0	0
Unclassified Assets	13,003,725	12,673,110	13,095,362	13,311,444	14,542,419	14,579,812
Total Assets	94,389,654	92,444,288	95,405,474	96,490,576	105,718,219	106,601,181
	Jan-09	Feb-09	Mar-09	Apr-09	May-09	Jun-09
Liabilities						
Reserve Money	8,764,193	8,345,865	8,724,106	8,750,867	9,332,301	9,321,971
Other Deposits	0	0	0	0	0	0
Restricted Reserves	18,781	18,781	18,781	18,781	18,781	18,781
Foreign Liabilities	58,346,413	56,859,449	58,819,462	59,898,964	66,377,214	66,554,948
Liabilities to General Government	3,101,977	3,135,381	3,256,187	2,848,070	2,934,522	3,622,464
Capital Accounts	16,072,561	16,049,696	16,410,896	16,723,165	18,062,852	18,071,369
Unclassified Liabilities	8,085,729	8,035,116	8,176,041	8,250,728	8,992,550	9,011,649
Total Liabilities	94,389,654	92,444,288	95,405,474	96,490,576	105,718,219	106,601,181
Vertical Check (Assets/Liabilities)	(0)	0	0	0	0	0

NBFIs: Non-Bank Financial Institutions

Source : Central Bank of Liberia, Monrovia, Liberia.

MONEY AND BANKING

CENTRAL BANK OF LIBERIA

1.3b: Sectoral Balance Sheet of Central Bank of Liberia-2009- continued

Thousands of Liberian Dollars

	Jul-09	Aug-09	Sep-09	Oct-09	Nov-09	Dec-09
Assets						
Foreign Assets	13,935,318	24,796,787	25,283,370	24,994,349	24,125,182	26,409,617
Claims on General Government	79,303,820	80,624,320	80,790,535	79,337,928	76,744,788	79,127,747
Claims on Public Corporations	0	0	0	0	0	0
Claims on Private Sector	216,585	258,899	177,305	173,152	96,804	123,534
Claims on Domestic Banks	316,020	304,755	229,713	305,006	193,556	242,307
Claims on NBFIs	0	0	0	0	0	0
Unclassified Assets	14,839,373	15,105,612	15,261,795	14,997,348	14,629,981	14,949,842
Total Assets	108,611,116	121,090,373	121,742,718	119,807,784	115,790,312	120,853,047
	Jul-09	Aug-09	Sep-09	Oct-09	Nov-09	Dec-09
Liabilities						
Reserve Money	13,935,318	9,330,936	9,505,174	9,459,087	9,246,237	10,581,224
Other Deposits	79,303,820	0	0	0	0	0
Restricted Reserves	0	18,781	18,781	18,781	18,781	18,781
Foreign Liabilities	216,585	79,922,059	81,113,323	79,698,377	77,308,942	79,907,065
Liabilities to General Government	316,020	3,767,550	3,149,051	3,356,583	3,194,199	3,239,340
Capital Accounts	0	18,710,576	18,567,980	18,048,372	17,133,964	17,869,411
Unclassified Liabilities	14,839,373	9,340,471	9,388,410	9,226,584	8,888,190	9,237,227
Total Liabilities	108,611,116	121,090,373	121,742,718	119,807,784	115,790,312	120,853,048
Vertical Check (Assets/Liabilities)	(0)	0	0	0	0	0

NBFIs: Non-Bank Financial Institutions

Source : Central Bank of Liberia, Monrovia, Liberia.

MONEY AND BANKING

CENTRAL BANK OF LIBERIA

1.3c: Sectoral Balance Sheet of Central Bank of Liberia - 2010

Thousands of Liberian Dollars

	Jan-10	Feb-10	March-10	April-10	May-10	June-10
Assets						
Foreign Assets	28,454,558	28,779,711	27,656,483	27,818,496	27,213,432	28,444,068
Claims on General Government	79,610,570	79,306,270	77,668,378	77,391,918	75,963,664	18,906,897
Claims on Public Corporations	0	0	0	0	0	0
Claims on Private Sector	123,764	126,774	45,740	44,847	45,256	60,761
Claims on Domestic Banks	230,175	248,029	327,362	272,935	652,458	502,458
Claims on NBFIs	0	0	0	0	0	0
Unclassified Assets	14,981,011	14,876,660	14,617,682	14,554,687	14,210,329	14,381,142
Total Assets	123,400,078	123,337,445	120,315,646	120,082,883	118,085,139	62,295,326
	Jan-10	Feb-10	March-10	April-10	May-10	June-10
Liabilities						
Reserve Money	10,827,951	11,452,356	10,967,263	11,049,159	11,337,501	11,283,522
Other Deposits	0	0	0	0	0	0
Restricted Reserves	18,781	18,781	18,781	18,781	18,781	18,781
Foreign Liabilities	80,083,679	79,526,178	77,700,494	77,338,640	75,468,893	17,884,448
Liabilities to General Government	4,899,058	4,676,364	4,447,603	4,411,052	4,375,688	5,284,434
Capital Accounts	18,344,443	18,511,259	18,140,166	18,117,314	18,064,358	18,309,178
Unclassified Liabilities	9,226,166	9,152,506	9,041,338	9,147,937	8,819,919	9,514,963
Total Liabilities	123,400,078	123,337,445	120,315,646	120,082,883	118,085,139	62,295,326
Vertical Check (Assets/Liabilities)	(0)	0	0	0	0	0

NBFIs: Non-Bank Financial Institutions

Source: Central Bank of Liberia, Monrovia, Liberia.

MONEY AND BANKING

CENTRAL BANK OF LIBERIA

1.3c: Sectoral Balance Sheet of Central Bank of Liberia - 2010 (continued)
Thousands of Liberian Dollars

	Jul-10	Aug-10	Sep-10	Oct-10	Nov-10	Dec-10
Assets						
Foreign Assets	29,033,901	29,878,312	30,432,127	32,621,011	31,885,680	33,388,024
Claims on General Government	18,969,127	18,969,127	18,969,127	18,782,430	18,222,341	18,720,198
Claims on Public Corporations	0	0	0	0	0	0
Claims on Private Sector	163,217	167,736	54,986	57,564	57,463	350,667
Claims on Domestic Banks	398,767	312,480	293,465	241,882	250,354	615,641
Claims on NBFIs	0	0	0	0	0	0
Unclassified Assets	14,797,555	14,715,792	15,266,309	15,258,098	14,616,567	14,616,567
Total Assets	63,362,566	64,043,446	65,016,013	66,960,985	64,657,996	67,691,098
	Jul-10	Aug-10	Sep-10	Oct-10	Nov-10	Dec-10
Liabilities						
Reserve Money	11,398,766	11,663,517	12,325,689	12,657,632	13,727,287	14,267,497
Other Deposits	0	0	0	0	0	0
Restricted Reserves	18,781	18,781	18,781	18,781	18,781	18,781
Foreign Liabilities	18,901,249	18,782,685	19,354,131	19,340,528	18,200,987	19,706,304
Liabilities to General Government	4,960,449	5,553,434	4,974,899	6,848,734	6,094,037	6,519,838
Capital Accounts	18,387,867	18,374,853	18,434,033	18,202,695	17,236,590	17,406,510
Unclassified Liabilities	9,695,455	9,650,175	9,908,480	9,892,616	9,380,314	9,772,168
Total Liabilities	63,362,566	64,043,446	65,016,013	66,960,985	64,657,996	67,691,098
Vertical Check (Assets/Liabilities)	0	0	0	0	0	0

NBFIs: Non-Bank Financial Institutions

Source : Central Bank of Liberia, Monrovia, Liberia.

MONEY AND BANKING

CENTRAL BANK OF LIBERIA

1.4a: Commercial Banks' Loans By Economic Sector - 2008*Thousands of Liberian Dollars*

Sector	Jan-08		Feb-08		Mar-08		Apr-08		May-08		Jun-08	
	L\$	%	L\$	%	L\$	%	L\$	%	L\$	%	L\$	%
1. Agriculture	202,725	4.6	199,464	4.2	205,824	4.3	206,388	4.1	223,817	4.2	187,103	3.6
1.1 Rubber	19,519	0.4	17,412	0.4	36,872	0.8	35,741	0.7	34,111	0.6	34,485	0.7
1.2 Forestry	34,608	0.8	34,608	0.7	34,133	0.7	34,373	0.7	48,108	0.9	45,974	0.9
1.3 Fishery	8,305	0.2	33,705	0.7	20,163	0.4	33,544	0.7	32,880	0.6	11,567	0.2
1.4 Others	140,293	3.2	113,740	2.4	114,655	2.4	102,730	2.0	108,719	2.0	95,077	1.8
2. Mining & Quarrying	0	0.0	0	0.0	0	0.0	0	0.0	0	0.0	0	0.0
2.1 Iron Ore	0	0.0	0	0.0	0	0.0	0	0.0	0	0.0	0	0.0
2.2 Quarrying	0	0.0	0	0.0	0	0.0	0	0.0	0	0.0	0	0.0
3. Manufacturing	110,281	2.5	152,655	3.2	151,638	3.2	157,871	3.1	150,764	2.8	134,932	2.6
4. Construction	318,137	7.2	511,999	10.9	504,507	10.5	591,920	11.7	603,981	11.4	629,578	12.1
4.1 Mortgage Loans	8,542	0.2	8,833	0.2	8,698	0.2	8,675	0.2	8,218	0.2	7,453	0.1
4.2 Home Improvement	14,224	0.3	12,764	0.3	12,589	0.3	12,663	0.3	12,764	0.2	12,764	0.2
4.3 Others	295,371	6.7	490,403	10.4	483,220	10.1	570,582	11.3	583,000	11.0	609,362	11.7
5. Trans., Storage & Comm.	223,969	5.1	598,062	12.7	607,620	12.7	640,309	12.6	650,259	12.2	635,349	12.2
5.1 Transportation	178,136	4.1	493,008	10.5	502,444	10.5	504,351	10.0	511,928	9.6	500,469	9.6
5.2 Storage	0	0.0	0	0.0	0	0.0	0	0.0	0	0.0	0	0.0
5.3 Communication	45,833		105,054	2.2	105,175	2.2	135,958	2.7	138,331	2.6	134,880	2.6
6. Trade, Hotel & Rest.	933,094	21.2	1,536,037	32.6	1,617,513	33.7	1,526,789	30.1	1,645,219	30.9	1,586,326	30.4
6.1 Diamond trade	7,620	0.2	7,366	0.2	7,516	0.2	8,064	0.2	7,620	0.1	7,874	0.2
6.2 Other trade	793,330	18.0	1,386,410	29.4	1,455,541	30.4	1,351,319	26.7	1,440,101	27.1	1,380,374	26.5
6.3 Hotels	121,666	2.8	131,402	2.8	142,744	3.0	139,497	2.8	171,146	3.2	168,615	3.2
6.4 Restaurants	10,478	0.2	10,859	0.2	11,712	0.2	27,909	0.6	26,353	0.5	29,464	0.6
7. Others	2,608,305	59.3	1,717,993	36.4	1,707,517	35.6	1,941,731	38.3	2,045,872	38.5	2,037,757	39.1
7.1 Services	1,301,331	29.6	1,041,003	22.1	1,013,334	21.1	957,148	18.9	1,330,115	25.0	1,363,734	26.2
7.2 Personal	692,691	15.8	436,413	9.3	453,757	9.5	752,969	14.9	505,742	9.5	462,344	8.9
7.3 GOL	71,882	1.6	71,882	1.5	70,897	1.5	71,316	1.4	69,469	1.3	69,469	1.3
7.4 Central Bank of Liberia	0	0.0	0	0.0	0	0.0	0	0.0	0	0.0	0	0.0
7.5 Public Corporations	403,339	9.2	24,721	0.5	23,356	0.5	23,477	0.5	22,244	0.4	22,117	0.4
7.6 Others	139,063	3.2	143,975	3.1	146,173	3.0	136,821	2.7	118,302	2.2	120,093	2.3
TOTAL	4,396,509	100.0	4,716,209	100.0	4,794,618	100.0	5,065,008	100.0	5,319,911	100.0	5,211,044	100.0

Source: Central Bank of Liberia, Monrovia, Liberia.

MONEY AND BANKING

CENTRAL BANK OF LIBERIA

1.4a: Commercial Banks' Loans By Economic Sector-2008 - continued*Thousands of Liberian Dollars*

Sector	Jul-08		Aug-08		Sep-08		Oct-08		Nov-08		Dec-08	
	L\$	%	L\$	%	L\$	%	L\$	%	L\$	%	L\$	%
1. Agriculture	210,797	3.8	213,022	3.8	283,911	4.8	866,865	13.6	310,785	5.0	316,972	5.1
1.1 Rubber	33,025	0.6	31,248	0.6	47,379	0.8	80,484	1.3	78,461	1.3	83,204	1.3
1.2 Forestry	49,467	0.9	25,845	0.5	45,695	0.8	46,847	0.7	60,252	1.0	62,208	1.0
1.3 Fishery	10,488	0.2	7,684	0.1	8,257	0.1	28,960	0.5	23,466	0.4	23,360	0.4
1.4 Others	117,818	2.1	148,246	2.6	182,581	3.1	710,574	11.1	148,606	2.4	148,200	2.4
2. Mining & Quarrying	290	0.0	291	0.0	34	0.0	0	0.0	25,342	0.4	23,083	0.4
2.1 Iron Ore	0.0	0.0	0.0	0.0	0.0	0.0	0.0	0.0	0.0	0.0	0.0	0.0
2.2 Quarrying	290	0.0	291	0.0	34	0.0	0	0.0	25,342	0.4	23,083	0.4
3. Manufacturing	164,482	3.0	151,837	2.7	168,329	2.8	182,559	2.9	181,874	2.9	183,762	3.0
4. Construction	491,831	8.9	520,674	9.3	607,650	10.2	631,408	9.9	575,518	9.2	551,124	8.8
4.1 Mortgage Loans	6,511	0.1	5,177	0.1	13,400	0.2	20,711	0.3	15,181	0.2	10,506	0.2
4.2 Home Improvement	22,225	0.4	20,511	0.4	18,733	0.3	16,955	0.3	15,054	0.2	13,440	0.2
4.3 Others	463,095	8.4	494,986	8.8	575,518	9.6	593,743	9.3	545,283	8.7	527,178	8.5
5. Trans., Storage & Comm.	638,623	11.6	623,116	11.1	710,760	11.9	736,415	11.5	764,268	12.3	735,564	11.8
5.1 Transportation	557,720	10.1	547,392	9.7	625,624	10.5	645,505	10.1	634,996	10.2	606,206	9.7
5.2 Storage	0.0	0.0	0.0	0.0	0.0	0.0	0.0	0.0	0.0	0.0	0.0	0.0
5.3 Communication	80,903	1.5	75,724	1.3	85,136	1.4	90,910	1.4	129,272	2.1	129,358	2.1
6. Trade, Hotel & Rest.	1,919,500	34.9	1,935,310	34.4	2,025,629	33.9	1,997,959	31.8	1,907,671	30.6	1,856,078	29.8
6.1 Diamond trade	7,938	0.1	7,811	0.1	7,938	0.1	7,938	0.1	7,717	0.1	8,832	0.1
6.2 Other trade	1,711,794	31.1	1,727,399	30.7	1,805,690	30.3	1,795,247	28.6	1,699,592	27.3	1,647,382	26.5
6.3 Hotels	168,763	3.1	172,500	3.1	180,942	3.0	176,634	2.8	172,526	2.8	172,591	2.8
6.4 Restaurants	31,007	0.6	27,600	0.5	31,060	0.5	18,142	0.3	27,836	0.4	27,273	0.4
7. Others	2,081,515	37.8	2,177,456	38.7	2,172,769	36.4	1,676,894	30.4	2,468,529	39.6	2,561,250	41.1
7.1 Services	1,237,737	22.5	1,075,364	19.1	1,335,388	22.4	810,412	15.5	694,739	11.1	1,758,115	28.2
7.2 Personal	632,481	11.5	876,424	15.6	492,458	8.3	517,100	9.4	544,031	8.7	582,301	9.3
7.3 GOL	72,009	1.3	71,768	1.3	68,276	1.1	68,341	1.1	68,073	1.1	68,880	1.1
7.4 Central Bank of Liberia	0	0.0	5,779	0.1	0	0.0	0	0.0	0	0.0	0	0.0
7.5 Public Corporations	20,149	0.4	18,942	0.3	20,022	0.3	19,641	0.3	19,574	0.3	18,813	0.3
7.6 Others	119,139	2.2	129,179	2.3	256,627	4.3	261,401	4.1	1,142,113	18.3	133,141	2.1
TOTAL	5,507,036	100.0	5,621,705	100.0	5,969,080	100.0	6,092,099	100.0	6,233,986	100.0	6,227,833	100.0

Source : Central Bank of Liberia, Monrovia, Liberia.

MONEY AND BANKING

CENTRAL BANK OF LIBERIA

1.4b: Commercial Banks' Loans By Economic Sector - 2009*Thousands of Liberian Dollars*

Sector	Jan-09		Feb-09		Mar-09		Apr-09		May-09		Jun-09	
	L\$	%	L\$	%	L\$	%	L\$	%	L\$	%	L\$	%
1. Agriculture	296,956	4.6	196,392	3.0	226,159	3.5	317,207	4.6	281,164	3.5	273,695	3.4
1.1 Rubber	80,729	1.3	79,439	1.2	75,916	1.2	142,975	2.1	66,596	0.8	65,918	0.8
1.2 Forestry	69,467	1.1	54,503	0.8	57,124	0.9	47,747	0.7	54,567	0.7	56,471	0.7
1.3 Fishery	12,255	0.2	16,641	0.3	49,676	0.8	53,333	0.8	71,205	0.9	61,547	0.8
1.4 Others	134,506	2.1	45,810	0.7	43,444	0.7	73,152	1.1	88,796	1.1	89,761	1.1
2. Mining & Quarrying	23,265	0.4	18,105	0.3	16,075	0.2	13,412	0.2	14,219	0.2	13,583	0.2
2.1 Iron Ore	0.0	0.0	0.0	0.0	0.0	0.0	0.0	0.0	0.0	0.0	0.0	0.0
2.2 Quarrying	23,265	0.4	18,105	0.3	16,075	0.2	13,412	0.2	14,219	0.2	13,583	0.2
3. Manufacturing	178,592	2.8	158,162	2.4	158,471	2.4	216,975	3.1	189,118	2.4	179,484	2.2
4. Construction	568,031	8.9	610,270	9.4	624,167	9.5	714,339	10.3	771,444	9.7	808,561	10.0
4.1 Mortgage Loans	11,353	0.2	13,196	0.2	9,664	0.1	29,473	0.4	12,808	0.2	12,025	0.1
4.2 Home Improvement	13,094	0.2	11,933	0.2	10,374	0.2	9,111	0.1	8,390	0.1	7,050	0.1
4.3 Others	543,584	8.5	585,142	9.0	604,129	9.2	675,755	9.7	750,247	9.4	789,487	9.8
5. Trans., Storage & Comm.	773,082	12.1	749,802	11.6	736,974	11.3	788,468	11.3	1,040,576	13.1	1,023,889	12.7
5.1 Transportation	669,199	10.5	629,604	9.7	605,968	9.3	671,601	9.7	777,416	9.8	805,521	10.0
5.2 Storage	0.0	0.0	0.0	0.0	0.0	0.0	33.3	0.0	35.3	0.0	0.0	0.0
5.3 Communication	103,883	1.6	120,198	1.9	131,006	2.0	116,834	1.7	263,125	3.3	218,369	2.7
6. Trade, Hotel & Rest.	1,904,129	29.7	2,136,710	33.0	2,158,625	33.0	2,234,342	32.1	2,640,360	33.2	2,734,968	33.9
6.1 Diamond trade	8,708	0.1	9,159	0.1	6,318	0.1	6,783	0.1	8,531	0.1	8,319	0.1
6.2 Other trade	1,681,815	26.3	1,914,599	29.6	1,926,661	29.4	2,015,575	29.0	2,397,581	30.2	2,505,048	31.1
6.3 Hotels	186,701	2.9	184,969	2.9	197,097	3.0	176,875	2.5	192,518	2.4	179,266	2.2
6.4 Restaurants	26,906	0.4	27,984	0.4	28,550	0.4	35,110	0.5	41,731	0.5	42,336	0.5
7. Others	2,658,474	41.5	2,597,664	40.2	2,623,640	40.1	2,666,579	38.4	3,012,688	37.9	3,026,985	37.6
7.1 Services	1,121,277	17.5	954,603	14.8	1,356,320	20.7	1,530,105	22.0	1,708,208	21.5	1,673,736	20.8
7.2 Personal	601,617	9.4	730,130	11.3	1,062,578	16.2	879,340	12.6	923,813	11.6	936,242	11.6
7.3 GOL	65,871	1.0	68,840	1.1	71,527	1.1	69,045	1.0	73,197	0.9	73,550	0.9
7.4 Central Bank of Liberia	0	0.0	0	0.0	0	0.0	0	0.0	0.0	0.0	0.0	0.0
7.5 Public Corporations	18,938	0.3	19,070	0.3	16,762	0.3	60,804	0.9	81,988	1.0	81,353	1.0
7.6 Others	850,772	13.3	825,021	12.8	116,454	1.8	127,286	1.8	225,483	2.8	262,105	3.3
TOTAL	6,402,528	100.0	6,467,103	100.0	6,544,110	100.0	6,951,320	100.0	7,949,567	100.0	8,061,164	100.0

Source: Central Bank of Liberia, Monrovia, Liberia.

MONEY AND BANKING

CENTRAL BANK OF LIBERIA

1.4b: Commercial Banks' Loans By Economic Sector-2009 - continued*Thousands of Liberian Dollars*

Sector	Jul-09		Aug-09		Sep-09		Oct-09		Nov-09		Dec-09	
	L\$	%	L\$	%	L\$	%	L\$	%	L\$	%	L\$	%
1. Agriculture	312,219	3.7	317,171	3.6	298,921	3.3	319,045	3.5	290,496	3.2	329,172	3.4
1.1 Rubber	66,010	0.8	66,959	0.8	77,112	0.8	160,057	1.8	70,416	0.8	74,730	0.8
1.2 Forestry	56,683	0.7	57,565	0.7	48,528	0.5	48,011	0.5	132,667	1.5	49,773	0.5
1.3 Fishery	80,288	1.0	106,140	1.2	102,024	1.1	86,574	1.0	65,678	0.7	72,897	0.8
1.4 Others	109,238	1.3	86,507	1.0	71,257	0.8	24,404	0.3	21,735	0.2	131,772	1.4
2. Mining & Quarrying	5,863	0.1	3,029	0.0	130	0.0	7,251	0.1	13,089	0.1	13,879	0.1
2.1 Iron Ore	0.0	0.0	0.0	0.0	0.0	0.0	7,120.5	0.1	12,960.0	0.1	13,747.5	0.1
2.2 Quarrying	5,863	0.1	3,029	0.0	130	0.0	131	0.0	129	0.0	132	0.0
3. Manufacturing	172,575	2.1	171,162	2.0	151,066	1.7	147,106	1.6	140,674	1.6	164,012	1.7
4. Construction	968,369	11.6	1,001,060	11.5	1,029,910	11.3	1,034,068	11.4	988,130	11.0	1,087,512	11.4
4.1 Mortgage Loans	11,518	0.1	7,983	0.1	7,145	0.1	6,708	0.1	5,096	0.1	5,288	0.1
4.2 Home Improvement	12,269	0.1	10,078	0.1	12,600	0.1	15,158	0.2	8,033	0.1	38,775	0.4
4.3 Others	944,582	11.3	982,999	11.3	1,010,165	11.1	1,012,202	11.2	975,001	10.8	1,043,449	10.9
5. Trans., Storage & Comm.	1,049,745	12.6	1,091,930	12.5	1,201,936	13.2	1,144,129	12.6	1,298,577	14.4	1,331,454	13.9
5.1 Transportation	766,265	9.2	773,069	8.9	792,358	8.7	729,344	8.0	883,239	9.8	922,100	9.6
5.2 Storage	35.9	0.0	0.0	0.0	0.0	0.0	0.0	0.0	33.8	0.0	0.0	0.0
5.3 Communication	283,444	3.4	318,862	3.7	409,578	4.5	414,786	4.6	415,305	4.6	409,354	4.3
6. Trade, Hotel & Rest.	2,604,255	31.2	2,684,599	30.8	2,847,581	31.4	2,930,667	32.3	2,870,569	31.9	3,066,187	32.0
6.1 Diamond trade	7,821	0.1	8,483	0.1	8,712	0.1	8,460	0.1	7,830	0.1	9,659	0.1
6.2 Other trade	2,358,549	28.3	2,388,044	27.4	2,495,067	27.5	2,573,135	28.4	2,567,494	28.5	2,731,172	28.5
6.3 Hotels	211,628	2.5	263,794	3.0	311,658	3.4	303,829	3.3	255,466	2.8	278,169	2.9
6.4 Restaurants	26,258	0.3	24,279	0.3	32,144	0.4	45,244	0.5	39,779	0.4	47,189	0.5
7. Others	3,231,291	38.7	3,440,321	39.5	3,548,123	39.1	3,489,729	38.5	3,403,823	37.8	3,576,517	37.4
7.1 Services	1,882,741	22.6	2,123,571	24.4	2,060,618	22.7	1,987,169	21.9	1,887,344	21.0	1,962,504	20.5
7.2 Personal	965,498	11.6	898,202	10.3	1,069,802	11.8	1,106,052	12.2	1,104,715	12.3	1,175,685	12.3
7.3 GOL	74,501	0.9	75,280	0.9	74,762	0.8	73,206	0.8	70,093	0.8	73,207	0.8
7.4 Central Bank of Liberia	0.0	0.0	0.0	0.0	0.0	0.0	0.0	0.0	0.0	0.0	0.0	0.0
7.5 Public Corporations	98,676	1.2	110,046	1.3	76,762	0.8	47,374	0.5	25,026	0.3	23,200	0.2
7.6 Others	209,875	2.5	233,223	2.7	266,179	2.9	275,929	3.0	316,645	3.5	341,921	3.6
TOTAL	8,344,316	100.0	8,709,271	100.0	9,077,667	100.0	9,071,995	100.0	9,005,355	100.0	9,568,732	100.0

Source: Central Bank of Liberia, Monrovia, Liberia.

MONEY AND BANKING

CENTRAL BANK OF LIBERIA

1.4c: Commercial Banks' Loans By Economic Sector- 2010*Thousands of Liberian Dollars*

Sector	Jan-10		Feb-10		Mar-10		Apr-10		May-10		Jun-10	
	L\$	%	L\$	%	L\$	%	L\$	%	L\$	%	L\$	%
1. Agriculture	54,527	7.8	61,299	8.3	368,963	3.6	313,667	3.1	293,622	2.9	346,084	3.3
1.1 Rubber	-	-	-	-	104,176	1.0	71,858	0.7	72,215	0.7	73,551	0.7
1.2 Forestry	13,824	2.0	13,824	1.9	46,776	0.5	68,835	0.7	66,234	0.6	63,870	0.6
1.3 Fishery	-	-	-	6.5	82,644	0.8	66,209	0.7	70,499	0.7	70,372	0.7
1.4 Others	40,703	5.8	47,475	-	135,368	1.3	106,766	1.0	84,674	0.8	138,292	1.3
2. Mining & Quarrying	65	0.0	67	0.0	570	0.0	26,026	0.3	25,456	0.2	18,572	0.2
2.1 Iron Ore	0.0	0.0	0.0	0.0	429.0	0.0	25,740.0	0.3	25,096.5	0.2	16,400.8	0.2
2.2 Quarrying	65	0.0	67	0.1	141	0.0	286	0.0	359	0.0	2,171	0.0
3. Manufacturing	4,705	0.7	785	0.0	144,626	1.4	175,687	1.7	171,908	1.7	381,308	3.7
4. Construction	4,068	0.6	4,728	0.6	1,056,813	10.3	988,629	9.7	1,590,828	15.6	929,904	9.0
4.1 Mortgage Loans	-	0.0	-	0.0	-	0.0	-	0.0	669,097	6.6	-	0.0
4.2 Home Improvement	-	0.0	-	0.0	39,754	0.4	39,325	0.4	46,976	0.5	46,746	0.5
4.3 Others	4,068	0.6	4,728	0.6	1,017,059	9.9	949,304	9.3	874,755	8.6	883,159	8.5
5. Trans., Storage & Comm.	4,957	0.7	5,376	0.7	1,656,603	16.2	1,608,718	15.8	1,616,504	15.8	1,760,489	17.0
5.1 Transportation	1,728	0.2	2,141	0.3	927,850	9.0	882,248	8.7	925,059	9.1	969,047	9.4
5.2 Storage	0.0	0.0	0.0	0.0	0.0	0.0	0.0	0.0	0.0	0.0	0.0	0.0
5.3 Communication	3,229	0.5	3,235	0.4	728,753	7.1	726,471	7.1	691,445	6.8	791,442	7.6
6. Trade, Hotel & Rest.	266,643	38.0	287,040	39.0	3,035,559	29.6	3,027,744	29.7	2,974,278	29.2	2,918,583	28.2
6.1 Diamond trade	0	0.0	0	0.0	10,582	0.1	10,582	0.1	11,726	0.1	12,788	0.1
6.2 Other trade	265,023	37.8	284,912	38.7	2,719,935	26.5	2,727,535	26.8	2,693,191	26.4	2,622,629	25.3
6.3 Hotels	50	0.0	52	0.0	259,385	2.5	248,590	2.4	221,209	2.2	238,631	2.3
6.4 Restaurants	1,570	0.2	2,076	0.3	45,658	0.4	41,037	0.4	48,153	0.5	44,536	0.4
7. Others	366,420	52.2	376,137	51.1	3,989,446	38.9	4,037,635	39.7	3,527,205	34.6	3,999,394	38.6
7.1 Services	323,402	46.1	295,156	40.1	1,723,155	16.8	1,872,670	18.4	1,336,219	13.1	1,255,594	12.1
7.2 Personal	42,222	6.0	80,238	10.9	1,816,770	17.7	1,733,079	17.0	1,700,096	16.7	2,238,356	21.6
7.3 GOL	45	0.0	31	0.0	67,243	0.7	67,244	0.7	67,246	0.7	67,952	0.7
7.4 Central Bank of Liberia	0	0.0	0	0.0	0	0.0	0	0.0	0	0.0	0	0.0
7.5 Public Corporations	5	0.0	5	0.0	90,024	0.9	64,212	0.6	76,582	0.8	73,122	0.7
7.6 Others	746	0.1	707	0.1	292,255	2.9	300,430	3.0	347,063	3.4	364,370	3.5
TOTAL	701,385	100.0	735,432	100.0	10,252,578	100.0	10,178,104	100.0	10,199,798.30	100	10,354,334.66	100

Source : Central Bank of Liberia, Monrovia, Liberia.

MONEY AND BANKING

CENTRAL BANK OF LIBERIA

1.4c: Commercial Banks' Loans By Economic Sector- 2010 (continued)*Thousands of Liberian Dollars*

Sector	Jul-10		Aug-10		Sep-10		Oct-10		Nov-10		Dec-10	
	L\$	%	L\$	%	L\$	%	L\$	%	L\$	%	L\$	%
1. Agriculture	341,883	3.1	305,489	2.8	307,948	2.6	389,493	3.1	383,000	3.0	398,250	3.2
1.1 Rubber	72,718	0.7	94,614	0.9	157,704	1.3	104,368	0.8	140,833	1.1	105,244	0.8
1.2 Forestry	64,851	0.6	55,970	0.5	40,605	0.3	98,035	0.8	60,419	0.5	78,749	0.6
1.3 Fishery	73,370	0.7	68,223	0.6	68,440	0.6	136,827	1.1	129,268	1.0	145,360	1.2
1.4 Others	130,945	1.2	86,683	0.8	41,199	0.3	50,262	0.4	52,482	0.4	68,897	0.5
2. Mining & Quarrying	25,671	0.2	41,477	0.4	56,557	0.5	2,160	0.0	71,390	0.6	2,085	0.0
2.1 Iron Ore	23,562.5	0.2	26,752.5	0.2	54,375.0	0.5	0.0	0.0	67,135.0	0.5	0.0	0.0
2.2 Quarrying	2,108	0.0	14,725	0.1	2,182	0.0	2,160	0.0	4,255	0.0	2,085	0.0
3. Manufacturing	391,019	3.6	146,130	1.4	162,587	1.4	146,684	1.2	155,772	1.2	162,694	1.3
4. Construction	1,155,840	10.5	638,354	5.9	1,047,493	8.7	1,098,051	8.7	1,115,678	8.8	1,215,416	9.6
4.1 Mortgage Loans	-	0.0	4,858	0.0	101,500	0.8	107,625	0.9	108,750	0.9	117,975	0.9
4.2 Home Improvement	48,430	0.4	48,793	0.5	305,466	2.5	302,626	2.4	303,395	2.4	387,730	3.1
4.3 Others	1,107,410	10.1	584,704	5.4	640,527	5.3	687,799	5.5	703,533	5.6	709,711	5.6
5. Trans., Storage & Comm.	1,845,753	16.8	1,188,979	11.0	2,272,817	18.9	2,812,529	22.3	2,865,432	22.6	2,823,580	22.4
5.1 Transportation	979,797	8.9	609,647	5.7	1,646,833	13.7	2,076,113	16.5	2,117,720	16.7	2,079,639	16.5
5.2 Storage	21,460.0	0.2	29,362.5	0.3	0.0	0.0	0.0	0.0	0.0	0.0	0.0	0.0
5.3 Communication	844,496	7.7	549,970	5.1	625,984	5.2	736,416	5.8	747,712	5.9	743,941	5.9
6. Trade, Hotel & Rest.	3,039,430	27.7	3,527,271	32.7	4,243,437	35.3	3,891,141	30.9	3,988,145	31.5	3,977,725	31.5
6.1 Diamond trade	182,265	1.7	12,978	0.1	13,630	0.1	13,633	0.1	239,178	1.9	13,800	0.1
6.2 Other trade	2,572,169	23.4	3,313,106	30.8	3,962,148	32.9	3,603,644	28.6	3,475,871	27.5	3,653,619	28.9
6.3 Hotels	235,472	2.1	184,150	1.7	249,930	2.1	257,102	2.0	256,020	2.0	292,743	2.3
6.4 Restaurants	49,525	0.5	17,038	0.2	17,730	0.1	16,763	0.1	17,077	0.1	17,564	0.1
7. Others	4,184,604	38.1	4,926,222	45.7	3,936,875	32.7	4,256,751	33.8	4,083,055	32.2	4,043,743	32.0
7.1 Services	1,354,477	12.3	1,469,538	13.6	1,405,048	11.7	1,438,534	11.4	1,382,090	10.9	1,321,596	10.5
7.2 Personal	2,431,660	22.1	3,198,222	29.7	2,338,875	19.4	2,569,536	20.4	2,527,860	20.0	2,478,783	19.6
7.3 GOL	68,189	0.6	68,150	0.6	68,150	0.6	67,445	0.5	68,150	0.5	67,210	0.5
7.4 Central Bank of Liberia	0	0.0	0	0.0	0	0.0	0	0.0	0	0.0	0	0.0
7.5 Public Corporations	18,855	0.2	-	0.0	943	0.0	72	0.0	73	0.0	72	0.0
7.6 Others	311,423	2.8	190,313	1.8	123,860	1.0	181,164	1.4	104,883	0.8	176,083	1.4
TOTAL	10,984,198.20	100	10,773,920.88	100	12,027,713.00	100	12,596,808.22	100	12,662,470.50	100	12,623,491.04	100

Source : Central Bank of Liberia, Monrovia, Liberia.

MONEY AND BANKING

1.5: Commercial Banks' Interest Rates: 2008-2010

CENTRAL BANK OF LIBERIA

	Jan-08	Feb-08	Mar-08	Apr-08	May-08	Jun-08
Average Lending Rate	14.38	14.10	14.60	14.20	14.20	14.40
Average Personal Loan Rate	14.90	14.87	14.87	14.92	14.77	14.80
Average Mortgage Rate	12.00	12.00	12.00	12.00	12.00	12.00
Average Time Deposit Rate	4.35	4.20	4.10	4.00	3.90	4.20
Average Savings Rate	2.12	2.13	2.20	2.11	2.12	2.12
Average Rate on CDs	3.00	3.00	3.00	3.00	3.00	3.00

	Jul-08	Aug-08	Sep-08	Oct-08	Nov-08	Dec-08
Average Lending Rate	14.40	13.90	15.80	14.30	14.20	14.30
Average Personal Loan Rate	14.73	14.78	14.80	14.77	14.42	14.31
Average Mortgage Rate	14.00	14.00	14.00	14.00	14.00	14.00
Average Time Deposit Rate	3.70	4.10	3.70	3.90	3.70	4.10
Average Savings Rate	2.12	2.11	2.11	2.08	2.12	2.11
Average Rate on CDs	3.00	3.00	3.00	3.00	3.00	3.00

	Jan-09	Feb-09	Mar-09	Apr-09	May-09	Jun-09
Average Lending Rate	14.10	14.30	14.00	14.30	14.20	14.20
Average Personal Loan Rate	14.74	14.78	14.59	14.59	14.60	14.63
Average Mortgage Rate	14.00	14.00	14.00	14.00	14.00	14.49
Average Time Deposit Rate	3.80	3.90	3.60	4.30	4.30	4.30
Average Savings Rate	2.11	2.10	2.10	2.10	2.00	2.00
Average Rate on CDs	3.00	3.00	3.00	3.00	3.00	3.00

	Jul-09	Aug-09	Sep-09	Oct-09	Nov-09	Dec-09
Average Lending Rate	14.10	14.20	14.22	14.28	14.24	14.10
Average Personal Loan Rate	14.41	15.04	14.67	14.72	14.66	14.49
Average Mortgage Rate	14.00	14.48	14.42	14.48	14.60	14.45
Average Time Deposit Rate	4.10	4.20	4.20	4.20	4.10	4.30
Average Savings Rate	2.00	2.00	2.00	2.00	2.00	2.00
Average Rate on CDs	3.00	3.00	3.00	3.00	3.00	3.00

	Jan-10	Feb-10	March-10	April-10	May-10	Jun-10
Average Lending Rate	14.10	14.16	14.17	14.23	14.58	14.17
Average Personal Loan Rate	14.46	14.54	14.46	14.53	14.48	14.45
Average Mortgage Rate	14.50	14.00	14.47	14.50	14.31	14.28
Average Time Deposit Rate	4.30	4.20	3.90	4.00	4.00	4.20
Average Savings Rate	2.00	2.00	2.00	2.00	2.01	2.19
Average Rate on CDs	3.00	3.00	3.00	3.00	3.00	3.00

	Jul-10	Aug-10	Sep-10	Oct-10	Nov-10	Dec-10
Average Lending Rate	14.34	14.15	14.40	14.27	14.17	14.17
Average Personal Loan Rate	14.38	13.65	14.42	14.51	14.12	14.15
Average Mortgage Rate	14.32	14.00	14.28	14.27	14.23	14.19
Average Time Deposit Rate	4.10	3.00	2.90	2.50	2.50	2.90
Average Savings Rate	2.21	2.44	2.00	2.00	2.00	2.01
Average Rate on CDs	3.00	3.00	3.00	3.00	3.00	3.00

Note: CDs-Certificate of Deposits

Source : Central Bank of Liberia, Monrovia, Liberia.

MONEY AND BANKING

CENTRAL BANK OF LIBERIA

L6: Liberian Dollar Exchange Rates - Period Averages: 2008 - 2010
(Liberian dollar per US dollar)

Period 2008	Large bills ¹		
	Buy	Sell	Middle ²
Jan	62.96	64.00	63.48
Feb	62.20	63.20	62.70
Mar	62.00	63.01	62.50
Apr	62.06	63.08	62.57
May	62.78	63.56	63.17
Jun	63.00	64.00	63.50
Jul	63.00	64.00	63.50
Aug	63.00	64.00	63.50
Sep	63.00	63.94	63.47
Oct	63.00	64.00	63.50
Nov	62.92	63.70	63.31
Dec	62.81	63.76	63.29
Quarter 1	62.39	63.40	62.89
Quarter 2	62.61	63.55	63.08
Quarter 3	63.00	63.98	63.49
Quarter 4	62.91	63.82	63.37
Year	62.73	63.69	63.21

Period 2009	Large bills ¹		
	Buy	Sell	Middle ²
Jan	63.94	64.93	64.44
Feb	64.00	65.00	64.50
Mar	64.50	65.35	64.92
Apr	65.60	66.23	65.91
May	67.46	68.37	67.91
Jun	69.34	70.30	69.82
Jul	70.61	71.59	71.75
Aug	71.67	72.75	72.21
Sep	71.35	72.44	71.89
Oct	70.59	71.56	71.07
Nov	67.36	68.36	67.86
Dec	67.31	68.31	67.81
Quarter 1	64.15	65.09	64.62
Quarter 2	67.47	68.30	67.88
Quarter 3	71.21	72.26	71.95
Quarter 4	68.42	69.41	68.91

Period 2010	Large bills ¹		
	Buy	Sell	Middle ²
Jan	70.83	71.83	71.33
Feb	71.25	72.31	71.78
March	71.09	72.09	71.59
April	70.21	71.21	70.71
May	70.58	71.58	71.08
June	71.19	72.15	71.67
July	71.81	72.76	72.29
Aug	72.00	73.00	72.50
Sep	71.35	72.35	71.85
Oct	71.50	72.54	72.02
Nov	69.35	70.31	69.83
Dec	69.72	70.67	70.19
Quarter 1	71.06	72.08	71.57
Quarter 2	70.66	71.65	71.15
Quarter 3	71.72	72.70	72.21
Quarter 4	70.19	71.17	70.68

¹US dollar bank notes of denominations 5 and higher.

²Average of buying and selling rates

Source : Central Bank of Liberia, Monrovia, Liberia.

MONEY AND BANKING

CENTRAL BANK OF LIBERIA

1.7: Liberian Dollar Exchange Rates - End of Period: 2008 - 2010

(Liberian dollars per US dollar)

Months	2008	2009	2010
Jan	63.50	64.50	72.00
Feb	62.50	64.50	72.50
Mar	62.63	65.50	71.50
Apr	63.00	66.50	71.50
May	63.50	70.50	71.50
Jun	63.50	70.50	72.25
Jul	63.50	71.75	72.50
Aug	63.50	72.50	72.50
Sep	63.50	72.00	72.50
Oct	63.50	70.50	71.75
Nov	63.25	67.50	69.50
Dec	64.00	70.50	71.75

Source : Central Bank of Liberia, Monrovia, Liberia.

MONEY AND BANKING

CENTRAL BANK OF LIBERIA

1.8: Liberian Dollar Exchange Rates November-December, 2010*(Liberian dollar per US dollar)*

Period	Large bills ¹			Period	Large bills ¹		
	Buy	Sell	Middle ²		Buy	Sell	Middle ²
November				December			
1	71.50	72.50	72.00	1	69.00	70.00	69.50
2	71.50	72.00	71.75	2	69.00	70.00	69.50
3	71.50	72.50	72.00	3	69.00	70.00	69.50
4	71.00	72.00	71.50	4	69.00	70.00	69.50
5	71.00	72.00	71.50	6	69.00	70.00	69.50
6	71.00	72.00	71.50	7	68.00	69.00	68.50
8	70.00	71.00	70.50	8	68.00	69.00	68.50
9	69.00	70.00	69.50	9	68.50	69.00	68.75
10	69.00	70.00	69.50	10	68.50	69.00	68.75
11	69.00	70.00	69.50	11	68.50	69.00	68.75
12	69.00	70.00	69.50	13	69.00	70.00	69.50
13	69.00	70.00	69.50	14	69.00	70.00	69.50
15	69.00	70.00	69.50	15	69.00	70.00	69.50
16	69.00	70.00	69.50	16	70.00	71.00	70.50
17	68.00	69.00	68.50	17	70.00	71.00	70.50
18	68.50	69.00	68.75	18	70.00	71.00	70.50
19	68.00	69.00	68.50	20	70.00	71.00	70.50
20	69.00	70.00	69.50	21	70.00	71.00	70.50
22	68.00	69.00	68.50	22	71.00	72.00	71.50
23	68.00	69.00	68.50	23	71.00	72.00	71.50
24	68.00	69.00	68.50	24	71.00	72.00	71.50
25	69.00	70.00	69.50	25	71.00	72.00	71.50
26	69.00	70.00	69.50	27	71.00	72.00	71.50
27	69.00	70.00	69.50	28	71.00	72.00	71.50
29	69.00	70.00	69.50	29	71.00	72.00	71.50
30	69.00	70.00	69.50	30	71.00	72.00	71.75
				31	71.00	72.00	70.15
Average	69.35	70.31	69.83	Average	69.72	70.67	70.19

1. US dollar bank notes of denominations 5 and higher.

2. Average of buying and selling rates.

Source: Central Bank of Liberia, Monrovia, Liberia.

MONEY AND BANKING

CENTRAL BANK OF LIBERIA

1.9: Commercial Banks' Inflows and Outflows: 2008 - 2010

(Thousands of United States Dollars)

Commercial Banks' Inflows and Outflows - 2008

	Jan-08	Feb-08	Mar-08	Apr-08	May-08	Jun-08	Jan-Jun Total
Inflows	74,719	78,974	85,703	89,174	86,462	84,156	499,188
Outflows	89,800	61,007	71,576	59,002	58,945	95,368	435,698

	Jul-08	Aug-08	Sep-08	Oct-08	Nov-08	Dec-08	Jul-Dec Total
Inflows	71,013	81,689	102,533	71,689	63,696	75,305	465,925
Outflows	71,822	76,620	91,237	83,481	75,627	88,628	487,415

Commercial Banks' Inflows and Outflows - 2009

	Jan-09	Feb-09	Mar-09	Apr-09	May-09	Jun-09	Jan-Jun Total
Inflows	69,304	61,894	71,761	75,140	70,308	57,940	406,347
Outflows	79,193	68,248	72,458	66,581	67,114	63,878	417,472

	Jul-09	Aug-09	Sep-09	Oct-09	Nov-09	Dec-09	Jul-Dec Total
Inflows	56,421	53,494	51,066	71,682	72,322	71,334	376,319
Outflows	62,019	49,022	66,909	60,000	61,861	72,343	372,154

Commercial Banks' Inflows and Outflows - 2010

	Jan-10	Feb-10	March-10	April-10	May-10	June-10	Jan-Jun Total
Inflows	76,415	72,640	85,774	81,936	76,878	69,171	462,814
Outflows	52,355	97,548	78,758	76,380	85,615	86,615	477,271

	Jul-10	Aug-10	Sep-10	Oct-10	Nov-10	Dec-10	Jul-Dec Total
Inflows	72,052	86,136	78,694	85,750	80,414	122,317	525,363
Outflows	92,791	88,455	90,075	75,237	71,786	98,292	516,636

Source : Central Bank of Liberia, Monrovia, Liberia.

MONEY AND BANKING

CENTRAL BANK OF LIBERIA

1.10a: Central Bank of Liberia Fx Auction -2008

Auction No.	Date	FX Offered for sale by CBL (US\$)	Auction Rate L\$/US	Total Purchased US\$	No. of Accepted Bids	No. of Rejected Bids	Value of Rejected Bids (US\$)	Over/(Under) Subscription (US\$)	Total Value of Bids Submitted by Participating Banks/FX Bureaux (US\$)
86	3-Jan-08	500,000	61.10	500,000	12	7	254,861	-255,861	755,861
87	9-Jan-08	500,000	61.50	500,000	17	8	400,000	-480,673	980,673
88	16-Jan-08	500,000	61.80	500,000	14	17	560,925	-580,652	1,080,652
89	23-Jan-08	500,000	61.99	500,000	12	18	395,544	-426,657	926,657
90	30-Jan-08	500,000	62.19	500,000	14	13	418,600	-446,842	946,842
91	6-Feb-08	500,000	61.26	500,000	10	15	457,858	-457,858	957,858
92	13-Feb-08	500,000	61.19	500,000	17	11	479,802	-516,771	1,016,771
93	20-Feb-08	500,000	60.52	500,000	13	11	461,402	-490,902	990,902
94	27-Feb-08	500,000	60.51	500,000	14	12	422,808	-441,360	941,360
95	5-Mar-08	500,000	60.70	500,000	14	8	23,534	-259,434	759,434
96	13-Mar-08	500,000	60.66	500,000	11	8	266,544	-275,944	775,944
97	19-Mar-08	500,000	60.82	500,000	11	12	379,162	-388,162	888,162
98	26-Mar-08	500,000	60.99	500,000	11	11	382,350	-392,850	892,850
99	2-Apr-08	500,000	61.01	500,000	13	10	355,468	-448,468	948,468
100	9-Apr-08	500,000	61.10	500,000	11	13	3,954,371	-403,838	903,838
101	16-Apr-08	500,000	61.22	500,000	11	13	462,782	-443,933	943,933
102	23-Apr-08	500,000	61.28	500,000	12	13	357,861	-399,410	899,410
103	30-Apr-08	500,000	61.34	500,000	14	12	471,756	-541,649	1,041,649
104	7-May-08	500,000	61.44	500,000	15	13	461,300	-507,775	1,007,775
105	15-May-08	500,000	61.47	500,000	11	22	595,016	-617,716	1,117,716
106	21-May-08	500,000	61.56	500,000	17	15	453,452	-578,412	1,078,412
107	28-May-08	500,000	61.70	500,000	11	17	379,287	-504,247	1,004,247
108	4-Jun-08	500,000	61.72	500,000	13	14	346,278	-402,212	902,212
109	11-Jun-08	500,000	61.81	500,000	14	18	677,241	-692,041	1,192,041
110	18-Jun-08	500,000	61.83	500,000	11	16	469,203	-481,840	981,840
111	25-Jun-08	500,000	61.88	500,000	11	16	553,660	-575,420	1,075,420

Source : Central Bank of Liberia, Monrovia, Liberia.

MONEY AND BANKING

CENTRAL BANK OF LIBERIA

1.10a: Central Bank of Liberia Fx Auction -2008 continued

Auction No.	Date	FX Offered for sale by CBL (US\$)	Auction Rate L\$/US	Total Purchased US\$	No. of Accepted Bids	No. of Rejected Bids	Value of Rejected Bids (US\$)	Over/(Under) Subscription (US\$)	Total Value of Bids Submitted by Participating Banks/FX Bureaux (US\$)
112	2-Jul-08	500,000	61.90	500,000	11	18	567,523	-572,323	1,072,323
113	9-Jul-08	500,000	61.93	500,000	13	15	596,431	-620,386	1,120,386
114	16-Jul-08	500,000	61.94	500,000	14	11	480,000	-507,224	1,007,224
115	23-Jul-08	500,000	61.95	500,000	16	11	424,510	-640,150	1,140,150
116	30-Jul-08	500,000	61.96	500,000	12	11	581,937	-592,782	1,092,782
117	6-Aug-08	500,000	61.96	500,000	13	15	580,647	-614,962	1,114,962
118	13-Aug-08	500,000	61.96	500,000	13	13	468,510	-573,705	1,073,705
119	20-Aug-08	500,000	61.96	500,000	13	10	382,482	-441,002	941,002
120	27-Aug-08	500,000	61.96	500,000	13	10	332,871	-425,163	925,163
121	3-Sep-08	500,000	61.81	500,000	11	14	533,746	-558,671	1,058,671
122	10-Sep-08	500,000	61.84	500,000	11	10	398,251	-438,251	938,251
123	17-Sep-08	500,000	61.85	500,000	13	10	340,081	-374,547	874,547
124	24-Sep-08	500,000	61.86	500,000	11	11	448,513	-476,888	976,888
125	1-Oct-08	500,000	61.86	500,000	12	6	246,280	-295,722	795,722
126	8-Oct-08	500,000	61.86	500,000	14	6	229,740	-299,840	799,840
127	15-Oct-08	500,000	61.86	500,000	15	8	238,604	-373,770	873,770
128	22-Oct-08	500,000	61.86	500,000	14	9	326,300	-417,183	917,183
129	29-Oct-08	500,000	61.86	500,000	12	7	307,700	-322,250	822,250
130	5-Nov-08	500,000	61.98	500,000	12	4	161,905	-235,566	735,566
131	12-Nov-08	500,000	61.98	500,000	11	9	423,861	-425,478	925,478
132	19-Nov-08	500,000	61.99	500,000	13	5	249,925	-296,716	796,716
133	26-Nov-08	500,000	61.97	500,000	11	7	276,000	-279,500	779,500
134	3-Dec-08	500,000	61.97	500,000	11	5	210,500	-236,300	736,300
135	10-Dec-08	500,000	61.79	500,000	12	3	150,000	-179,480	679,480
136	17-Dec-08	500,000	61.88	500,000	12	6	230,770	-235,455	735,455
137	24-Dec-08	500,000	61.89	500,000	14	5	250,000	-269,188	769,188
Total		26,000,000		26,000,000	654	478	18,874,175	-21,405,002	47,405,002

Source : Central Bank of Liberia, Monrovia, Liberia.

MONEY AND BANKING

CENTRAL BANK OF LIBERIA

1.10b Central Bank of Liberia Fx Auction -2009

Auction No.	Date	FX Offered for sale by CBL (US\$)	Auction Rate L\$/US	Total Purchased US\$	No. of Accepted Bids	No. of Rejected Bids	Value of Rejected Bids (US\$)	Over/(Under) Subscription (US\$)	Total Value of Bids Submitted by Participating Banks/FX Bureaux (US\$)
138	7-Jan-09	500,000	61.98	500,000	14	19	698,182	-770,717	1,270,717
139	14-Jan-09	500,000	61.99	500,000	13	21	705,705	-745,406	1,245,406
140	21-Jan-09	500,000	61.99	500,000	12	21	687,189	-772,144	1,272,144
141	28-Jan-09	500,000	61.93	500,000	11	14	522,148	-527,118	1,027,118
142	4-Feb-09	500,000	61.95	500,000	14	14	861,994	-888,445	1,388,445
143	12-Feb-09	500,000	61.95	500,000	11	15	571,307	-575,657	1,075,657
144	18-Feb-09	500,000	61.96	500,000	13	16	577,342	-595,677	1,095,677
145	25-Feb-09	500,000	61.96	500,000	17	22	949,711	-1,114,391	1,614,391
146	12-Mar-09	500,000	63.25	500,000	12	28	1,088,544	-1,115,544	1,615,544
147	18-Mar-09	500,000	63.89	500,000	12	29	1,146,122	-1,166,261	1,666,261
148	25-Mar-09	500,000	63.98	500,000	15	19	813,050	-861,770	1,361,770
149	1-Apr-09	500,000	64.00	500,000	11	29	1,111,426	-1,131,426	1,631,426
150	8-Apr-09	500,000	64.00	500,000	12	9	249,526	-300,810	800,810
151	15-Apr-09	500,000	64.14	500,000	16	12	418,908	-445,775	945,775
152	22-Apr-09	500,000	64.47	500,000	12	21	848,825	-867,605	1,367,605
153	29-Apr-09	500,000	64.86	500,000	10	41	1,581,554	-1,581,554	2,081,554
154	6-May-09	500,000	65.11	500,000	12	30	1,240,436	-1,240,436	1,740,436
155	13-May-09	500,000	65.21	500,000	10	30	1,257,975	-1,257,975	1,757,975
156	20-May-09	500,000	66.00	500,000	11	35	1,458,877	-1,470,877	1,970,877
157	27-May-09	500,000	68.25	500,000	10	38	2,203,682	-1,203,682	1,703,682
158	3-Jun-09	500,000	69.32	500,000	15	43	1,180,462	-1,180,462	1,680,462
159	10-Jun-09	500,000	68.25	500,000	11	31	1,241,043	-1,241,043	1,741,043
160	17-Jun-09	500,000	69.00	500,000	17	18	645,538	-645,538	1,145,538
161	24-Jun-09	500,000	71.21	500,000	13	20	779,514	-779,514	1,279,514
Total		12,000,000		12,000,000	304	575	22,839,062	-22,479,827	34,479,827

Source : Central Bank of Liberia, Monrovia, Liberia.

MONEY AND BANKING

CENTRAL BANK OF LIBERIA

1.10b Central Bank of Liberia Fx Auction -2009- continued

Auction No.	Date	FX Offered for sale by CBL (US\$)	Auction Rate L\$/US	Total Purchased US\$	No. of Accepted Bids	No. of Rejected Bids	Value of Rejected Bids (US\$)	Over/(Under) Subscription (US\$)	Total Value of Bids Submitted by Participating Banks/FX Bureaux (US\$)
162	1-Jul-09	500,000	70.66	500,000	14	22	974,898	(974,898)	1,474,898
163	8-Jul-09	500,000	70.67	500,000	10	20	741,994	(741,994)	1,241,994
164	15-Jul-09	500,000	71.00	500,000	11	23	983,725	(983,725)	1,483,725
165	22-Jul-09	500,000	71.30	500,000	13	15	628,031	(628,031)	1,128,031
166	29-Jul-09	500,000	71.90	500,000	11	15	598,817	(598,817)	1,098,817
167	5-Aug-09	500,000	72.40	500,000	12	15	702,596	(702,596)	1,202,596
168	12-Aug-09	500,000	71.21	500,000	10	12	488,000	(488,000)	988,000
169	19-Aug-09	500,000	71.00	500,000	11	20	863,759	(863,759)	1,363,759
170	26-Aug-09	500,000	71.90	500,000	13	7	433,500	(433,500)	933,500
171	2-Sep-09	500,000.00	72.1199	500,000.00	11	11	479,786.00	(479,786.00)	979,786.00
172	9-Sep-09	500,000.00	70.7500	500,000.00	13	5	339,465.00	(339,405.00)	839,405.00
173	16-Sep-09	500,000.00	71.5010	500,000.00	13	5	267,000.00	(267,000.00)	767,000.00
174	23-Sep-09	500,000.00	71.6010	500,000.00	13	5	228,790.00	(228,790.00)	728,790.00
175	30-Sep-09	500,000.00	71.9090	500,000.00	13	3	219,694.00	(219,694.00)	719,694.00
175	2-Oct-09	500,000.00	71.7090	500,000.00	10	-	-	-	500,000.00
176	7-Oct-09	1,000,000.00	70.1290	839,861.58	15	-	-	160,138.42	839,861.58
176	8-Oct-09	160,138.42	70.1290	160,138.42	3	-	-	-	160,138.42
177	14-Oct-09	1,500,000.00	70.0000	1,161,350.00	15	-	-	338,650.00	1,161,350.00
178	21-Oct-09	1,000,000.00	69.5000	1,000,000.00	12	-	-	-	1,000,000.00
179	28-Oct-09	1,000,000.00	69.5000	700,000.00	12	4	267,685.42	32,314.58	967,685.42
179	29-Oct-09	300,000.00	69.500	300,000.00	4	-	-	-	300,000.00
180	4-Nov-09	1,000,000.00	68.020	1,000,000.00	14	1	15,443.00	(15,443.00)	1,015,443.00
181	11-Nov-09	1,000,000.00	67.000	362,923.00	8	-	-	637,068.00	362,932.00
181	11-Nov-09	425,000.00	67.000	425,000.00	3	-	-	-	425,000.00
182	18-Nov-09	750,000.00	66.999	600,000.00	10	1	15,934.00	134,066.00	615,934.00
182	18-Nov-09	150,000.00	66.999	150,000.00	1	-	-	-	150,000.00
183	25-Nov-09	750,000.00	66.500	575,000.00	8	2	31,834.00	143,166.00	606,834.00
183	25-Nov-09	100,000.00	66.500	100,000.00	1	-	-	-	100,000.00
184	2-Dec-09	750,000.00	65.000	680,934.00	10	-	-	69,066.00	680,934.00
185	9-Dec-09	500,000.00	65.250	500,000.00	11	-	7,700.00	(7,700.00)	507,700.00
186	16-Dec-09	500,000.00	66.500	500,000.00	11	3	187,500.00	(187,500.00)	687,500.00
187	23-Dec-09	1,700,000.00	67.250	1,571,906.00	24	-	-	128,094.00	1,571,906.00
188	30-Dec-09	1,700,000.00	68.000	1,699,624.23	20	2	66,000.00	(65,624.23)	1,765,624.23
Total		21,785,138		19,826,737	360	191	8,542,152	-6,583,700	28,368,838

Source : Central Bank of Liberia, Monrovia, Liberia.

MONEY AND BANKING

1.10c Central Bank of Liberia Fx Auction -2010

Auction No.	Date	FX Offered for sale by CBL (US\$)	Auction Rate L\$/US	Total Purchased US\$	No. of Accepted Bids	No. of Rejected Bids	Value of Rejected Bids (US\$)	Over/(Under) Subscription (US\$)	Total Value of Bids Submitted by Participating Banks/FX Bureaux (US\$)
189	6-Jan-10	1,700,000	69.0000	1,700,000	25	1	29,000	(29,000)	1,729,000
190	13-Jan-10	1,500,000.00	70.00	1,500,000.00	26	1	209,456.04	(209,456.04)	1,709,456.04
191	20-Jan-10	750,000.00	70.50	750,000.00	18	2	353,000.00	(353,000.00)	1,103,000.00
192	27-Jan-10	500,000.00	71.50	500,000.00	13	11	658,438.94	(658,438.94)	1,158,438.94
193	3-Feb-10	750,000.00	71.60	750,000.00	17	5	442,169.68	(442,169.68)	1,192,169.68
194	10-Feb-10	750,000.00	71.7020	750,000.00	15	2	231,755.88	(231,755.88)	981,755.88
195	17-Feb-10	1,500,000.00	71.00	1,149,995.97	17	-	-	350,004.03	1,149,995.97
196	24-Feb-10	1,500,000.00	71.00	1,212,500.00	12	-	175,000.00	287,500.00	1,212,500.00
197	3-Mar-10	2,000,000.00	71.00	2,000,000.00	22	4	505,596.92	(505,596.92)	2,505,596.92
198	11-Mar-10	2,500,000.00	70.75	1,455,000.00	15	1	50,000.00	995,000.00	1,505,000.00
199	17-Mar-10	2,500,000.00	70.60	1,475,000.00	15	-	-	1,025,000.00	1,475,000.00
Special Window	19-Mar-10	1,000,000.00	71.00	1,000,000.00	-	-	-	-	1,000,000.00
200	24-Mar-10	1,500,000.00	70.50	1,267,000.00	18	-	-	233,000.00	1,267,000.00
Special Window	26-Mar-10	233,000.00	71.00	233,000.00	0	-	-	-	233,000.00
201	31-Mar-10	1,500,000.00	70.50	1,481,338.02	14	-	-	18,661.98	1,481,338.02
Special Window	2-Apr-10	500,000.00	71.00	500,000.00	-	-	-	-	500,000.00
202	7-Apr-10	1,500,000.00	70.00	1,125,228.27	16	-	-	374,771.73	1,125,228.27
203	14-Apr-10	1,430,000.00	70.00	1,430,000.00	16	-	-	-	1,430,000.00
204	21-Apr-10	1,500,000.00	70.00	1,500,000.00	13	-	-	-	1,500,000.00
205	28-Apr-10	1,000,000.00	69.9900	552,415.03	12	-	-	447,585.00	552,415.00
Window	29-Apr-10	447,584.97	70.0000	447,584.97	-	-	-	-	447,584.97
206	5-May-10	500,000.00	70.2000	500,000.00	11	3	305,000.00	(305,000.00)	805,000.00
207	12-May-10	500,000.00	70.4000	500,000.00	19	4	444,000.00	(444,000.00)	944,000.00
208	26-May-10	500,000.00	70.9000	500,000.00	19	4	360,850.00	(360,850.00)	860,850.00
209	2-Jun-10	500,000.00	71.6000	500,000.00	10	13	522,000.00	(522,000.00)	1,022,000.00
210	9-Jun-10	500,000.00	71.8880	500,000.00	9	11	671,500.00	(671,500.00)	1,171,500.00
211	16-Jun-10	500,000.00	71.9999	500,000.00	9	9	520,500.00	(520,500.00)	1,020,500.00
212	23-Jun-10	500,000.00	72.2711	500,000.00	13	11	608,902.74	(608,902.74)	1,108,902.74
213	30-Jun-10	1,000,000.00	72.4000	1,000,000.00	26	8	719,240.00	(719,240.00)	1,719,240.00
Total		31,060,584.97		27,279,062.26	400	90	6,806,410.20	(2,849,887.46)	33,910,472.43

Source : Central Bank of Liberia, Monrovia, Liberia.

MONEY AND BANKING

1.10c Central Bank of Liberia Fx Auction -2010 (continued)

Auction No.	Date	FX Offered for sale by CBL (US\$)	Auction Rate L\$/US	Total Purchased US\$	No. of Accepted Bids	No. of Rejected Bids	Value of Rejected Bids (US\$)	Over/(Under) Subscription (US\$)	Total Value of Bids Submitted by Participating Banks/FX Bureaux (US\$)
214	7-Jul-10	1,000,000.00	72.1999	1,000,000.00	17	3	392,885.00	(392,885.00)	1,392,885.00
215	14-Jul-10	500,000.00	72.4000	500,000.00	12	9	459,127.20	(459,127.00)	959,127.00
216	21-Jul-10	500,000.00	72.5999	500,000.00	10	7	350,000.00	(350,000.00)	850,000.00
217	28-Jul-10	500,000.00	72.7000	500,000.00	12	11	467,000.00	(467,000.00)	967,000.00
218	4-Aug-10	500,000.00	72.8999	500,000.00	10	8	320,000.00	(320,000.00)	820,000.00
219	11-Aug-10	750,000.00	72.6000	750,000.00	12	5	250,000.00	(110,980.00)	860,980.00
220	18-Aug-10	750,000.00	71.9999	300,000.00	6	15	728,250.00	(278,250.00)	1,028,250.00
221	25-Aug-10	750,000.00	71.7500	750,000.00	18	3	253,350.00	(253,350.00)	1,003,350.00
222	1-Sep-10	600,000.00	71.0000	600,000.00	9	10	434,000.00	(434,000.00)	1,034,000.00
223	8-Sep-10	500,000.00	71.2800	500,000.00	9	12	557,500.00	(557,500.00)	1,057,500.00
224	15-Sep-10	500,000.00	71.5000	500,000.00	13	3	210,000.00	(210,000.00)	710,000.00
225	22-Sep-10	500,000.00	71.8111	500,000.00	11	11	444,000.00	(444,000.00)	944,000.00
226	29-Sep-10	500,000.00	72.0000	500,000.00	15	5	350,000.00	(350,000.00)	850,000.00
227	6-Oct-10	750,000.00	71.0000	750,000.00	17	-	10,990.00	(10,990.00)	760,990.00
228	13-Oct-10	750,000.00	71.3310	750,000.00	12	6	268,500.00	(268,500.00)	1,018,500.00
229	20-Oct-10	750,000.00	71.6999	750,000.00	11	8	388,680.00	(388,680.00)	1,138,680.00
230	27-Oct-10	500,000.00	71.8500	500,000.00	11	11	607,105.00	(607,105.00)	1,107,105.00
231	3-Nov-10	500,000.00	71.8000	500,000.00	10	7	260,485.00	(260,485.00)	760,485.00
232	10-Nov-10	500,000.00	69.5000	500,000.00	13	1	50,000.00	(106,930.00)	606,930.00
233	17-Nov-10	500,000.00	71.8000	500,000.00	10	7	260,485.00	(260,485.00)	760,485.00
234	24-Nov-10	500,000.00	68.5000	500,000.00	13	1	50,000.00	(116,000.00)	616,000.00
235	1-Dec-10	500,000.00	69.0000	500,000.00	11	8	404,045.00	(404,045.00)	904,045.00
236	8-Dec-10	500,000.00	69.0000	500,000.00	11	3	195,000.00	(195,000.00)	695,000.00
237	15-Dec-10	500,000.00	69.8000	500,000.00	13	4	229,970.00	(229,970.00)	729,970.00
238	22-Dec-10	1,000,000.00	70.5000	1,000,000.00	15	-	760,000.00	240,000.00	760,000.00
239	29-Dec-10	1,000,000.00	70.9500	1,000,000.00	14	1	50,000.00	(465,000.00)	1,465,000.00
Total		16,100,000.00		15,650,000.00	315.00	159.00	8,751,372.20	(7,700,282.00)	23,800,282.00

Source : Central Bank of Liberia, Monrovia, Liberia.

REAL SECTOR

CENTRAL BANK OF LIBERIA

2.1a: Harmonized Consumer Price Index (HCPI) - 2008

Function	Weight (%)	Jan	Feb	Mar	Apr	May	Jun
Food & Non-alcoholic Beverages	45.20	148.82	144.88	142.69	142.16	149.66	167.20
Alcoholic Beverages, Tobacco & Narcotics	3.03	112.91	107.70	111.59	112.85	114.43	114.52
Clothing & Footwear	7.75	122.13	122.57	120.78	120.56	122.05	122.73
Housing, Water, Electricity, Gas & other fuels	12.00	114.44	115.08	115.98	116.33	119.27	119.86
Furnishings, Household Equipment & Routine Maintenance of the House	5.25	124.43	126.26	126.04	127.43	128.04	128.40
Health	3.91	100.00	100.00	102.03	100.00	100.34	101.01
Transport	6.11	125.98	129.13	126.39	127.74	169.27	171.60
Communication	1.53	83.05	82.95	80.62	82.93	83.01	80.75
Recreation & Culture	3.85	116.57	116.15	121.36	121.40	121.72	120.98
Education	3.20	100.00	100.00	100.00	100.00	100.00	100.00
Restaurants & Hotels	4.64	122.28	122.06	122.00	122.02	122.20	122.29
Miscellaneous Goods & Services	3.53	119.07	117.46	117.37	117.62	115.20	116.69
General Index	100.00	130.86	129.24	128.39	128.34	134.77	143.00

Function	Weight (%)	Jul	Aug	Sep	Oct	Nov	Dec
Food & Non-alcoholic Beverages	45.20	170.89	184.01	172.03	165.21	161.72	153.33
Alcoholic Beverages, Tobacco & Narcotics	3.03	115.02	111.97	113.39	114.02	114.00	114.78
Clothing & Footwear	7.75	127.71	125.33	127.40	131.68	131.43	131.88
Housing, Water, Electricity, Gas & other fuels	12.00	120.86	122.75	122.57	119.52	119.45	117.09
Furnishings, Household Equipment & Routine Maintenance of the House	5.25	128.01	139.83	146.75	146.95	146.71	127.68
Health	3.91	100.00	100.00	100.00	100.00	100.00	100.00
Transport	6.11	171.60	171.59	169.94	168.83	168.74	161.22
Communication	1.53	80.75	80.75	80.75	80.75	80.73	80.72
Recreation & Culture	3.85	123.95	123.95	123.93	123.95	123.84	123.83
Education	3.20	100.00	100.00	100.00	100.00	100.00	100.00
Restaurants & Hotels	4.64	130.42	125.77	125.76	125.77	125.67	125.66
Miscellaneous Goods & Services	3.53	116.70	119.71	118.63	117.58	117.41	117.18
General Index	100.00	145.62	152.01	147.00	143.81	142.17	136.69

The Harmonized Consumer Price Index (HCPI) is an amalgamation of the Classification of Individual twelve functions (major groups) together with the Monrovia Consumer Price Index (MCPI) and its weights

The Survey sample comprised wage-earner and clerical-employee households of two or more persons with

Source : Liberia Institute for Statistics & Geo-Information Services (LISGIS) and Central Bank of

REAL SECTOR

CENTRAL BANK OF LIBERIA

2.1b: Harmonized Consumer Price Index (HCPI) -2009

Function	Weight (%)	Jan	Feb	Mar	Apr	May	Jun
Food & Non-alcoholic Beverages	45.20	156.57	153.45	151.02	152.62	152.07	168.1
Alcoholic Beverages, Tobacco & Narcotics	3.03	116.57	115.16	123.34	124.94	124.02	128.2
Clothing & Footwear	7.75	141.12	138.95	135.14	132.85	142.31	148.9
Housing, Water, Electricity, Gas & other fuels	12.00	144.01	114.92	114.23	115.46	115.56	115.8
Furnishings, Household Equipment & Routine Maintenance of the House	5.25	144.44	143.78	150.85	154.01	174.60	175.3
Health	3.91	100.00	100.00	104.05	104.05	104.05	104.1
Transport	6.11	159.09	158.55	158.28	158.28	158.83	161.6
Communication	1.53	80.87	80.88	80.93	81.06	81.06	81.6
Recreation & Culture	3.85	124.45	124.48	120.56	125.42	127.17	128.2
Education	3.20	100.00	100.00	100.00	100.00	100.00	100.0
Restaurants & Hotels	4.64	121.44	133.77	134.06	134.73	237.92	244.3
Miscellaneous Goods & Services	3.53	119.65	119.70	117.94	115.80	126.73	131.8
General Index	100.00	139.22	138.22	137.30	138.36	145.18	153.80

Function	Weight (%)	Jul	Aug	Sep	Oct	Nov	Dec
Food & Non-alcoholic Beverages	45.20	171.13	176.2	175.21	169.0	166.67	159.8
Alcoholic Beverages, Tobacco & Narcotics	3.03	132.23	137.0	136.30	132.5	130.11	130.1
Clothing & Footwear	7.75	151.41	153.7	154.74	153.4	148.20	148.1
Housing, Water, Electricity, Gas & other fuels	12.00	118.28	118.1	115.75	117.7	116.92	115.9
Furnishings, Household Equipment & Routine Maintenance of the House	5.25	177.63	180.5	179.84	178.1	173.02	172.8
Health	3.91	104.05	104.1	104.05	104.1	104.05	104.1
Transport	6.11	163.47	163.5	163.47	162.9	164.28	163.7
Communication	1.53	81.73	81.9	81.83	81.7	81.31	81.3
Recreation & Culture	3.85	129.53	129.9	130.39	129.8	128.07	128.0
Education	3.20	100.00	100.0	100.00	100.0	100.00	100.0
Restaurants & Hotels	4.64	247.21	253.6	252.81	250.9	243.45	243.3
Miscellaneous Goods & Services	3.53	133.84	136.9	136.65	133.6	129.88	129.8
General Index	100.00	156.30	159.46	158.73	155.57	153.24	149.96

The Harmonized Consumer Price Index (HCPI) is an amalgamation of the Classification of Individual Consumption by Purpose (COICOP), consisting of twelve functions (major groups) together with the Monrovia Consumer Price Index (MCPI) and its weights obtained from the 1964 limited expenditure survey.

The Survey sample comprised wage-earner and clerical-employee households of two or more persons with monthly income not exceeding US\$250.

Source : Liberia Institute for Statistics & Geo-Information Services (LISGIS)

Source : Central Bank of Liberia (CBL)

REAL SECTOR

CENTRAL BANK OF LIBERIA

2.1c: Harmonized Consumer Price Index (HCPI) - 2010

Function	Weight (%)	Jan-10	Feb-10	Mar-10	Apr-10	May-10	Jun-10
Food & Non-alcoholic Beverages	45.20	171.25	163.66	167.55	165.86	170.26	170.51
Alcoholic Beverages, Tobacco & Narcotics	3.03	134.46	138.92	137.89	138.46	141.56	144.03
Clothing & Footwear	7.75	157.40	155.44	155.14	154.29	153.88	155.83
Housing, Water, Electricity, Gas & other fuels	12.00	117.00	118.65	117.63	118.79	118.56	119.23
Furnishings, Household Equipment & Routine Maintenance of the House	5.25	179.07	179.99	178.87	177.14	176.43	179.29
Health	3.91	104.05	104.05	104.05	104.05	104.05	104.05
Transport	6.11	164.55	165.36	164.55	164.80	166.18	166.18
Communication	1.53	81.76	81.82	81.79	81.68	81.60	81.80
Recreation & Culture	3.85	129.92	130.16	130.06	129.59	129.25	130.10
Education	3.20	100.00	100.00	100.00	100.00	100.00	100.00
Restaurants & Hotels	4.64	251.51	252.52	252.12	256.76	255.30	258.99
Miscellaneous Goods & Services	3.53	135.79	135.20	133.83	132.67	131.84	133.52
General Index	100.00	157.15	154.04	155.44	145.85	156.81	157.64

Function	Weight (%)	Jul-10	Aug-10	Sep-10	Oct-10	Nov-10	Dec-10
Food & Non-alcoholic Beverages	45.20	178.35	182.36	187.70	181.21	179.55	174.20
Alcoholic Beverages, Tobacco & Narcotics	3.03	142.21	140.28	139.90	140.37	144.98	148.16
Clothing & Footwear	7.75	161.38	161.75	160.61	160.91	160.58	161.23
Housing, Water, Electricity, Gas & other fuels	12.00	121.16	121.99	121.87	121.65	121.30	121.02
Furnishings, Household Equipment & Routine Maintenance of the House	5.25	188.07	188.40	187.44	170.36	167.62	169.54
Health	3.91	104.39	104.39	104.39	104.39	104.39	104.05
Transport	6.11	171.88	171.88	171.88	172.15	172.15	174.06
Communication	1.53	86.44	86.47	86.39	86.41	86.13	86.17
Recreation & Culture	3.85	130.43	130.55	130.55	131.22	130.05	130.24
Education	3.20	100.00	100.00	100.00	100.00	100.00	100.00
Restaurants & Hotels	4.64	261.18	261.68	260.17	260.75	255.75	256.49
Miscellaneous Goods & Services	3.53	134.29	135.38	134.54	134.31	130.05	130.37
General Index	100.00	162.83	164.79	166.94	163.19	161.93	159.88

The Harmonized Consumer Price Index (HCPI) is an amalgamation of the Classification of Individual Consumption by Purpose (COICOP), consisting of twelve functions (major groups) together with the Monrovia Consumer Price Index (MCPI) and its weights obtained from the 1964 limited expenditure survey. The Survey sample comprised wage-earner and clerical-employee households of two or more persons with monthly income not exceeding US\$250.

Source : Liberia Institute for Statistics & Geo-Information Services (LISGIS)

Source : Central Bank of Liberia (CBL)

REAL SECTOR

CENTRAL BANK OF LIBERIA

2.2a: HCPI Inflation Rate - 2008 (Year-on-Year)

Function	Weight (%)	Jan	Feb	Mar	Apr	May	Jun
Food & Non-alcoholic Beverages	45.20	28.27	24.65	22.46	15.70	26.29	31.83
Alcoholic Beverages, Tobacco & Narcotics	3.03	4.53	2.39	6.24	4.62	4.44	6.41
Clothing & Footwear	7.75	2.62	0.71	1.14	1.32	3.98	1.45
Housing, Water, Electricity, Gas & other fuels	12.00	3.89	4.58	5.44	5.73	9.46	9.62
Furnishings, Household Equipment & Routine Maintenance of the House	5.25	9.39	11.25	12.30	16.62	15.75	15.42
Health	3.91	-0.34	0.00	2.03	0.00	0.34	1.01
Transport	6.11	26.44	28.68	26.18	27.52	68.99	68.40
Communication	1.53	-3.41	-0.49	-3.26	-0.57	-0.60	-3.31
Recreation & Culture	3.85	4.43	4.62	9.41	9.19	9.11	8.02
Education	3.20	0.00	0.00	0.00	0.00	0.00	0.00
Restaurants & Hotels	4.64	5.54	0.49	2.55	6.39	0.75	0.86
Miscellaneous Goods & Services	3.53	5.05	7.59	7.69	9.32	8.66	8.67
General Rate of Inflation	100.00	16.50	14.78	14.28	11.72	19.22	21.95

Function	Weight (%)	Jul	Aug	Sep	Oct	Nov	Dec
Food & Non-alcoholic Beverages	45.20	28.82	39.24	27.86	25.09	19.17	11.10
Alcoholic Beverages, Tobacco & Narcotics	3.03	3.35	0.52	2.36	3.34	2.91	4.43
Clothing & Footwear	7.75	5.44	2.35	4.96	10.76	11.97	8.83
Housing, Water, Electricity, Gas & other fuels	12.00	10.63	12.27	11.80	9.03	5.66	3.37
Furnishings, Household Equipment & Routine Maintenance of the House	5.25	11.93	21.54	23.69	21.10	24.38	8.30
Health	3.91	0.00	0.00	0.00	0.00	0.00	0.00
Transport	6.11	67.93	67.92	39.53	39.09	36.87	28.93
Communication	1.53	-1.68	-1.86	-1.75	2.62	2.81	2.31
Recreation & Culture	3.85	11.34	10.72	10.51	9.98	11.21	7.57
Education	3.20	0.00	0.00	0.00	0.00	0.00	0.00
Restaurants & Hotels	4.64	7.99	3.76	3.29	3.33	3.58	3.42
Miscellaneous Goods & Services	3.53	9.58	10.33	10.55	9.68	10.41	2.13
General Rate of Inflation	100.00	21.26	26.54	19.97	18.57	15.52	9.39

The Harmonized Consumer Price Index (HCPI) is an amalgamation of the Classification of Individual Consumption by Purpose (COICOP), consisting of twelve functions (major groups) together the Monrovia Consumer Price Index (MCPI) and its weights, obtained from the 1964 limited expenditure survey. The Survey sample comprised wage-earner and clerical-employee households of two or more persons with monthly income not exceeding US\$250.

Source : Liberia Institute for Statistics & Geo-Information Services (LISGIS) and Central Bank of Liberia (CBL), Monrovia, Liberia

REAL SECTOR

CENTRAL BANK OF LIBERIA

2.2b: HCPI Inflation Rate -2009 (Year-on-Year)

Function	Weight (%)	Jan	Feb	Mar	Apr	May	Jun
Food & Non-alcoholic Beverages	45.20	5.21	5.92	5.84	7.36	1.61	0.56
Alcoholic Beverages, Tobacco & Narcotics	3.03	3.25	6.93	10.53	10.71	8.39	11.91
Clothing & Footwear	7.75	15.55	13.37	11.89	10.19	16.59	21.35
Housing, Water, Electricity, Gas & other fuels	12.00	-0.37	-0.14	-1.51	-0.75	-3.11	-3.37
Furnishings, Household Equipment & Routine Maintenance of the House	5.25	16.08	13.87	19.69	20.87	36.36	36.54
Health	3.91	0.00	0.00	1.99	4.05	3.70	3.01
Transport	6.11	26.28	22.78	25.23	23.91	-6.17	-6.17
Communication	1.53	-2.63	-2.50	0.39	-2.26	-2.35	1.01
Recreation & Culture	3.85	6.76	7.17	-0.66	3.31	4.47	5.96
Education	3.20	0.00	0.00	0.00	0.00	0.00	0.00
Restaurants & Hotels	4.64	-0.69	9.60	9.88	10.41	94.70	99.81
Miscellaneous Goods & Services	3.53	0.48	1.91	0.49	-1.55	10.01	12.98
General Rate of Inflation	100.00	6.39	6.95	6.94	7.80	7.72	7.55

Function	Weight (%)	Jul	Aug	Sep	Oct	Nov	Dec
Food & Non-alcoholic Beverages	45.20	0.14	-4.24	1.85	2.26	3.06	4.25
Alcoholic Beverages, Tobacco & Narcotics	3.03	14.96	22.38	20.21	16.21	14.13	13.32
Clothing & Footwear	7.75	18.56	22.66	21.46	16.48	12.76	12.31
Housing, Water, Electricity, Gas & other fuels	12.00	-2.14	-3.83	-5.56	-1.52	-2.12	-1.02
Furnishings, Household Equipment & Routine Maintenance of the House	5.25	38.76	29.09	22.55	21.20	17.94	35.35
Health	3.91	4.05	4.05	4.05	4.05	4.05	4.05
Transport	6.11	-4.74	-4.73	-3.81	-3.50	-2.14	-1.55
Communication	1.53	1.21	1.39	1.34	1.21	0.73	0.72
Recreation & Culture	3.85	4.51	4.80	5.21	4.71	3.14	3.40
Education	3.20	0.00	0.00	0.00	0.00	0.00	0.00
Restaurants & Hotels	4.64	89.56	101.61	101.03	99.50	93.72	93.64
Miscellaneous Goods & Services	3.53	14.69	14.37	15.19	13.66	10.62	10.78
General Rate of Inflation	100.00	7.33	4.90	7.98	8.18	7.78	9.71

The Harmonized Consumer Price Index (HCPI) is an amalgamation of the Classification of Individual Consumption by Purpose (COICOP), consisting of twelve functions (major groups) together the Monrovia Consumer Price Index (MCPI) and its weights, obtained from the 1964 limited expenditure survey. The Survey sample comprised wage-earner and clerical-employee households of two or more persons with monthly income not exceeding US\$250.

Source : Liberia Institute for Statistics & Geo-Information Services (LISGIS)

Source : Central Bank of Liberia (CBL)

REAL SECTOR

CENTRAL BANK OF LIBERIA

2.2c: HCPI Inflation Rate - 2010 (Year-on-Year)

Function	Weight (%)	Jan-10	Feb-10	Mar-10	Apr-10	May-10	Jun-10
Food & Non-alcoholic Beverages	45.20	9.37	6.65	10.95	8.68	11.96	1.42
Alcoholic Beverages, Tobacco & Narcotics	3.03	15.34	20.63	11.80	14.14	14.14	12.38
Clothing & Footwear	7.75	11.54	11.86	14.80	16.14	8.13	4.63
Housing, Water, Electricity, Gas & other fuels	12.00	2.62	3.25	2.97	2.88	2.60	2.95
Furnishings, Household Equipment & Routine Maintenance of the House	5.25	23.98	25.19	18.58	15.02	1.05	2.27
Health	3.91	4.05	4.05	4.05	4.05	0.00	2.27
Transport	6.11	3.43	4.30	3.96	4.12	4.62	3.20
Communication	1.53	1.10	1.16	1.06	0.76	0.66	0.29
Recreation & Culture	3.85	4.40	4.56	7.88	3.33	1.64	1.49
Education	3.20	0.00	0.00	0.00	0.00	0.00	0.00
Restaurants & Hotels	4.64	107.10	88.76	88.06	90.58	7.30	5.99
Miscellaneous Goods & Services	3.53	13.49	12.95	13.47	14.57	4.03	1.28
General Rate of Inflation	100.00	12.88	11.45	13.21	11.92	8.01	2.50

Function	Weight (%)	Jul-10	Aug-10	Sep-10	Oct-10	Nov-10	Dec-10
Food & Non-alcoholic Beverages	45.20	4.22	3.49	7.13	7.25	7.73	8.98
Alcoholic Beverages, Tobacco & Narcotics	3.03	7.55	2.37	2.64	5.94	11.43	13.90
Clothing & Footwear	7.75	6.59	5.21	3.79	4.91	8.36	8.85
Housing, Water, Electricity, Gas & other fuels	12.00	2.43	3.34	5.28	3.36	3.74	4.42
Furnishings, Household Equipment & Routine Maintenance of the House	5.25	5.88	4.38	4.23	-4.35	-3.12	-1.90
Health	3.91	0.32	0.32	0.32	0.32	0.32	0.00
Transport	6.11	5.14	5.15	5.15	5.67	4.79	6.31
Communication	1.53	5.77	5.62	5.57	5.73	5.92	6.31
Recreation & Culture	3.85	0.70	0.50	0.12	1.11	1.55	1.72
Education	3.20	0.00	0.00	0.00	0.00	0.00	0.00
Restaurants & Hotels	4.64	5.65	3.20	2.91	3.92	5.05	5.41
Miscellaneous Goods & Services	3.53	0.33	-1.12	-1.55	0.50	0.13	0.43
General Rate of Inflation	100.00	4.18	3.34	5.17	4.89	5.67	6.61

The Harmonized Consumer Price Index (HCPI) is an amalgamation of the Classification of Individual Consumption by Purpose (COICOP), consisting of twelve functions (major groups) together the Monrovia Consumer Price Index (MCPI) and its weights, obtained from the 1964 limited expenditure survey. The Survey sample comprised wage-earner and clerical-employee households of two or more persons with monthly income not exceeding US\$250.

Source : Liberia Institute for Statistics & Geo-Information Services (LISGIS)

Source : Central Bank of Liberia (CBL)

REAL SECTOR

CENTRAL BANK OF LIBERIA

2.3a: Key Output Volume- 2008

Commodity	Unit	Jan-08	Feb-08	Mar-08	Apr-08	May-08	Jun-08	Jan-Jun Total
Agriculture								
Rubber	Mt.	10,224	8,409	8,752	5,751	10,782	6,167	50,085
Cocoa Beans	Mt.	733	383	168	141	50	73	1,548
Coffee	Mt.	-	-	-	18	-	-	18
Round Logs	M ³	-	-	-	-	-	-	-
Sawn Timber	Pcs.	78,854	99,881	107,472	112,588	84,544	92,600	575,939
Fish	Kg.	-	-	-	-	-	-	-
Mining								
Gold	Ounces	1,963	1,816	1,815	1,647	1,811	1,659	10,711
Diamond	Carat	2,429	5,239	4,647	5,112	3,362	4,348	25,137
Manufacturing								
Cement	Mt.	10,343	13,337	12,658	225	10,969	7,197	54,729
Spirit	Litre	100,962	92,726	105,750	80,989	80,989	76,021	537,437
Beer	Litre	645,450	655,889	578,224	811,933	613,659	708,690	4,013,845
Stout	Litre	203,813	275,062	261,384	306,544	258,715	210,894	1,516,412
Malta	Litre	137,618	89,187	52,668	117,794	68,643	83,057	548,967
Soft Drink	Litre	229,097	173,786	140,062	231,991	391,975	354,456	1,521,367
Oil Paint	Gal.	4,158	5,038	436	120	340	572	10,664
Water Paint	Gal.	6,765	6,055	6,150	2,170	7,650	6,225	35,015
Varnish	Gal.	1,040	1,260	109	84	480	420	3,393
Manoline Hair Grease	Kg.	3,570	5,704	2,495	2,041	4,704	4,721	23,235
Thinner	Gal.	410	-	95	75	80	115	775
Rubbing Alcohol	Litre	-	31,463	9,439	-	-	-	40,902
Powder Soap	Kg.	8,085	9,450	10,505	15,750	10,715	14,690	69,195
Chlorox	Litre	45,042	42,392	19,368	41,756	47,082	38,974	234,614
Nail	Kg.	-	-	-	-	-	-	-
Candle	Kg.	33,600	40,541	28,350	21,893	19,845	27,489	171,718
Mattresses	Pcs.	8,901	9,973	9,497	10,207	10,149	9,688	58,415
Deep Well Water ¹ *	Gal.	4,590,322	4,562,416	4,799,607	6,976,173	-	-	20,928,518
Finished Water ² **	Gal.	85,737,745	116,490,375	122,098,250	136,049,500	61,875,000	141,200,644	663,451,514

1: Water from drilled wells

2: Water from White Plains Treatment Plant

* Estimates

**Revised

Sources : Ministries of Planning & Economic Affairs; Lands, Mines & Energy; Commerce & Industry; and Liberia

Institute of Statistics & Geo-Information Services (LISGIS); Forestry/Development Authority (FDA); Liberia

Produce Marketing Corporation (LPMC); Bridgeway Corporation, and Liberia Water & Sewer Corporation (LWSC), Monrovia, Liberia

REAL SECTOR

CENTRAL BANK OF LIBERIA

2.3a: Key Output Volume- 2008 - continued

Commodity	Unit	Jul-08	Aug-08	Sep-08	Oct-08	Nov-08	Dec-08	Jul-Dec Total	Grand Total
Agriculture									
Rubber	Mt.	6,920	8,870	2,439	6,408	6,721	3,331	34,689	84,774
Cocoa Beans	Mt.	736	14	165	-	-	-	915	2,463
Coffee	Mt.	-	19	56	-	-	-	75	93
Round Logs	M ³	-	-	-	-	-	-	-	-
Sawn Timber	Pcs.	85,989	57,539	57,192	81,837	92,676	85,248	460,481	1,036,420
Fish	Kg.	-	-	-	-	-	-	-	-
Mining									
Gold	Ounces	1,623	1,509	1,208	628	2,304	1,923	9,195	19,906
Diamond	Carat	7,649	5,234	4,446	2,937	221	1,339	21,826	46,963
Manufacturing									
Cement	Mt.	11,326	7,255	4,980	6,535	4,741	4,471	39,308	94,037
Spirit	Litre	102,850	113,262	125,256	106,534	91,074	115,930	654,907	1,192,344
Beer	Litre	524,670	573,664	599,735	168,298	782,750	920,063	3,569,180	7,583,025
Stout	Litre	303,526	320,958	356,273	188,591	279,148	416,006	1,864,502	3,380,914
Malta	Litre	32,939	34,214	155,295	-	138,909	50,403	411,761	960,728
Soft Drink	Litre	592,222	296,266	354,305	484,618	551,930	810,850	3,090,190	4,611,557
Oil Paint	Gal.	680	1,680	2,000	1,040	2,939	1,090	9,429	20,093
Water Paint	Gal.	7,000	7,500	7,000	5,550	12,065	17,280	56,395	91,410
Varnish	Gal.	170	420	500	260	735	272	2,357	5,750
Manoline Hair Grease	Kg.	-	2,520	2,310	2,335	4,746	3,906	15,817	39,052
Thinner	Gal.	150	125	100	150	210	325	1,060	1,835
Rubbing Alcohol	Litre	-	23,372	-	16,540	-	23,867	63,779	104,681
Powder Soap	Kg.	19,861	15,115	10,490	10,784	10,442	10,967	77,659	146,854
Chlorox	Litre	26,151	43,717	33,834	13,168	53,811	24,057	194,737	429,351
Nail	Kg.	-	-	-	-	-	-	-	-
Candle	Kg.	11,099	18,575	26,733	21,011	17,609	17,577	112,603	284,321
Mattresses	Pcs.	8,349	6,980	10,274	9,271	6,110	-	40,984	99,399
Finished Water ¹ *	Gal.	152,203,322	108,837,387	136,899,167	126,490,385	123,098,250	135,049,547	782,578,058	1,446,029,572

1: Water from White Plains Treatment Plant

* Revised

Sources : Ministries of Planning & Economic Affairs; Lands, Mines & Energy; Commerce & Industry; and Liberia

Institute of Statistics & Geo-Information Services (LISGIS); Forestry Development Authority (FDA); Liberia

Produce Marketing Corporation (LPMC); Bridgeway Corporation, and Liberia Water & Sewer Corporation (LWSC), Monrovia, Liberia

REAL SECTOR

CENTRAL BANK OF LIBERIA

2.3b: Key Output Volume - 2009 - 2010

Commodity	Unit	Jan-09	Feb-09	Mar-09	Apr-09	May-09	Jun-09	Jan-Jun Total
Agriculture								
Rubber	Mt.	339	6,940	5,865	6,088	2,258	5,014	26,504
Cocoa Beans	Mt.	-	-	-	-	-	-	-
Coffee	Mt.	-	-	-	-	-	-	-
Round Logs	M ³	-	-	-	-	-	-	-
Sawn Timber	Pcs.	48,779	53,559	77,399	87,430	108,651	80,537	456,355
Fish	Kg.	-	-	-	-	-	-	-
Mining								
Gold	Ounces	1,525	1,758	1,623	1,636	1,892	1,624	10,058
Diamond	Carat	792	498	231	2,530	1,925	4,786	10,762
Manufacturing								
Cement	Mt.	6,216	8,282	7,941	9,658	11,118	5,676	48,891
Spirit	Litre	53,495	49,401	55,469	89,258	74,197	79,612	401,432
Beer	Litre	797,361	425,554	718,560	930,227	503,966	666,534	4,042,202
Stout	Litre	275,172	222,101	249,021	312,642	428,258	325,076	1,812,270
Malta	Litre	137,895	35,022	86,629	67,819	70,084	160,119	557,568
Soft Drink	Litre	624,161	554,604	568,289	848,405	699,070	760,176	4,054,705
Oil Paint	Gal.	1,000	1,400	1,200	600	2,280	1,680	8,160
Water Paint	Gal.	6,500	12,600	15,500	11,250	14,450	19,500	79,800
Varnish	Gal.	250	350	300	150	570	420	2,040
Manoline Hair Grease	Kg.	4,200	3,830	5,040	4,780	4,813	8,232	30,895
Thinner	Gal.	200	150	250	125	100	425	1,250
Rubbing Alcohol	Litre	-	17,979	17,979	30,474	14,698	-	81,130
Powder Soap	Kg.	9,450	7,875	4,200	8,946	11,503	7,187	49,161
Chlorox	Litre	32,827	39,743	44,379	49,678	26,151	46,737	239,515
Nail	Kg.	-	-	-	-	-	-	-
Candle	Kg.	39,900	31,500	52,500	45,360	18,785	29,327	217,372
Mattresses	Pcs.	-	-	-	-	-	-	-
Finished Water ^{1*}	Gal.	117,065,198	127,065,198	101,898,717	120,005,395	115,359,082	110,228,628	691,622,218

1: Water from White Plains Treatment Plant

*Revised

Sources : Ministries of Planning & Economic Affairs; Lands, Mines & Energy; Commerce & Industry; and Liberia Institute of Statistics & Geo-Information Services (LISGIS); Forestry Development Authority (FDA); Liberia Produce Marketing Corporation (LPMC); Bridgeway Corporation, and Liberia Water & Sewer Corporation (LWSC), Monrovia, Liberia

REAL SECTOR

CENTRAL BANK OF LIBERIA

2.3b: Key Output Volume - 2009- continued

Commodity	Unit	Jul-09	Aug-09	Sep-09	Oct-09	Nov-09	Dec-09	Jul-Dec Total	Grand Total
Agriculture									
Rubber	Mt.	6,145*	7,393**	6,387.35	4,020	3,053.40	1484.28**	28,483.03	3,107,412
Cocoa Beans	Mt.	-	-	345	693	696	-	1,734.00	198,101,880.00
Coffee	Mt.	-	-	-	-	-	-	-	-
Round Logs	M ³	-	-	-	-	-	-	-	-
Sawn Timber	Pcs.	82,571	48,840	50,506	57,765	73,508	80,291	393,481.00	34,659,949.37
Fish	Kg.	-	-	-	-	-	-	-	-
Mining									
Gold	Ounces	1,044	880	1,772	1,747	1,893	2,346	9,681.97	1,029,781,321.01
Diamond	Carat	2,614	2,908	2,291	1,382	1,247	3,287	13,729.84	710,137,033.42
Manufacturing									
Cement	Mt.	6,014	3,347	10,097	7,759	5,283	4,129	36,629.00	1,066,721,541.00
Spirit	Litre	-	79,986	109,091	96,001	101,898	86,576	473,552.00	49,943,325.00
Beer	Litre	680,860	549,148	792,317	413,662	737,246	742,140	3,915,373.00	923,715,650.00
Stout	Litre	321,045	209,254	297,150	120,685	271,363	369,912	1,589,409.00	615,925,800.00
Malta	Litre	50,078	34,555	-	-	88,506	104,766	277,905.00	106,925,705.00
Soft Drink	Litre	848,153	255,708	961,682	806,909	1,124,273	1,120,781	5,117,506.00	559,548,920.00
Oil Paint	Gal.	2,000	1,600	2,400	3,600	2,840	3,200	15,640.00	21,479,505.80
Water Paint	Gal.	15,750	17,000	12,600	20,200	24,750	34,000	124,300.00	73,617,364.83
Varnish	Gal.	500	400	600	900	710	800	3,910.00	5,369,877.70
Manoline Hair Grease	Kg.	5,216	-	-	-	-	-	5,216.00	3,796,158.00
Thinner	Gal.	500	350	350	1,000	1,215	850	4,265.00	3,724,922.50
Rubbing Alcohol	Litre	19,552	22,384	-	-	-	72,095	114,031.00	2,821,446.00
Powder Soap	Kg.	25,568	121,133	-	-	-	-	146,701.00	5,032,450.00
Chlorox	Litre	53,016	43,796	-	-	61,389	44,697	202,898.00	10,398,027.00
Nail	Kg.	-	-	-	-	-	-	-	-
Candle	Kg.	11,655	26,954	-	-	20,790	24,990	84,389.00	25,438,833.00
Mattresses	Pcs.	8,901	5,125	8,015	8,623	9,076	9,234	48,974.00	107,324,477.36
Finished Water ¹	Gal.	na	na	na	na	na	na	na	na

1: Water from White Pl: *Revised

**Preliminary

Sources : Ministries of Planning & Economic Affairs; Lands, Mines & Energy; Commerce & Industry; and Liberia Institute of Statistics & Geo-Information Services (LISGIS); Forestry Development Authority (FDA); Liberia Produce Marketing Corporation (LPMC); Bridgeway Corporation, and Liberia Water & Sewer Corporation (LWSC), Monrovia, Liberia

REAL SECTOR

CENTRAL BANK OF LIBERIA

2.3c: Key Output Volume - 2010

Commodity	Unit	Jan-10	Feb-10	March-10	April-10	May-10	June-10
Agriculture							
Rubber	Mt.	6,387.35	4,020	3,053.40	2,390.60	9,429.08	4,334.40
Cocoa Beans	Mt.	345	693	696.00	720.00	420.00	225.00
Coffee	Mt.	-	-	-	17.00	162.00	162.00
Round Logs	M ³	-	-	-	-	-	-
Sawn Timber	Pcs.	50,506	57,765	73,508.00	56,215.00	47,959.00	39,861.00
Fish	Kg.	-	-	-	-	-	-
Mining							
Gold	Ounces	1,772	1,747	5,283.00	2,654.06	2,050.24	1,588.18
Diamond	Carat	2,291	1,382	1,247.49	1,644.91	1,271.34	1,999.16
Manufacturing							
Cement	Mt.	10,097	7,759	5,283.00	10,121.00	6,929.00	9,204.00
Spirit	Litre	109,091	96,001	101,898.00	-	74,067.30	78,598.35
Beer	Litre	792,317	413,662	737,246.00	872,191.88	850,896.52	192,616.56
Stout	Litre	297,150	120,685	271,363.00	377,839.44	275,164.56	165,488.40
Malta	Litre	-	-	88,506.00	178,683.12	-	-
Soft Drink	Litre	961,682	806,909	1,124,273.00	1,259,222.40	864,273.60	953,359.20
Oil Paint	Gal.	2,400	3,600	2,840.00	4,200.00	5,520.00	4,652.00
Water Paint	Gal.	12,600	20,200	24,750.00	29,125.00	31,920.00	33,650.00
Varnish	Gal.	600	900	710.00	1,050.00	1,380.00	1,163.00
Manoline Hair Grease	Kg.	16,842	6,560	4,704.00	15,834.00	2,679.60	3,360.00
Thinner	Gal.	350	1,000	1,215.00	1,500.00	1,200.00	1,850.00
Rubbing Alcohol	Litre	22,473	44,947	35,957.50	429,782.02	26,473.71	34,429.31
Powder Soap	Kg.	17,897	14,469	14,222.25	-	11,250.75	4,520.25
Chlorox	Litre	62,661	32,032	106,006.50	56,089.92	79,696.96	91,381.26
Nail	Kg.	-	-	-	-	-	-
Candle	Kg.	40,845	25,085	66,979.50	48,331.50	54,064.50	41,968.50
Mattresses	Pcs.	8,015	8,623	9,076.00	10,725.00	12,990.00	11,857.00
Finished Water ¹	Gal.	na	na	99,883,839.35	130,694,247.20	-	-

1: Water from White Plains Tr *Revised

**Preliminary

Sources : Ministries of Planning & Economic Affairs; Lands, Mines & Energy; Commerce & Industry; and Liberia Institute of Statistics & Geo-Information Services (LISGIS); Forestry Development Authority (FDA); Liberia Produce Marketing Corporation (LPMC); Bridgeway Corporation, and Liberia Water & Sewer Corporation (LWSC), Monrovia, Liberia

REAL SECTOR

CENTRAL BANK OF LIBERIA

2.3c: Key Output Volume - 2010 (continued)

Commodity	Unit	Jul-10	Aug-10	Sep-10	Oct-10	Nov-10	Dec-10
Agriculture							
Rubber	Mt.	6,048.00	4,471.00	6,609.00	5,709.46	5,596.73	4,800.53
Cocoa Beans	Mt.	240.00	428.00	478.00	648.30	964.16	1,255.68
Coffee	Mt.	11.00	-	-	27.30	-	-
Round Logs	M ³	-	-	-	-	1,230.00	-
Sawn Timber	Pcs.	29,126.00	42,235.00	28,886.00	40,047.00	42,381.00	35,294.00
Fish	Kg.						
Mining							
Gold	Ounces	948.00	2,172.00	2,265.00	1,355.60	1,127.96	1,828.71
Diamond	Carat	1,857.00	1,027.00	1,031.84	4,906.01	144.47	3,216.24
Manufacturing							
Cement	Mt.	5,063.00	3,039.00	4,294.00	4,025.00	3,137.00	2,782.00
Spirit	Litre	86,325.00		74,392.00	75,140.10	65,551.50	93,210.75
Beer	Litre	685,461.00	654,770.36	640,272.00	603,015.16	679,754.76	920,246.12
Stout	Litre	423,633.00	230,012.64	323,991.00	284,225.04	432,202.32	667,069.92
Malta	Litre	119,964.00	527,844.24	-	99,649.44	84,577.68	29,755.44
Soft Drink	Litre	834,250.00	829,519.20	797,026.00	804,578.40	887,616.00	1,293,091.20
Oil Paint	Gal.	960.00	2,954.00	880.00	2,600.00	2,260.00	2,440.00
Water Paint	Gal.	9,190.00	10,020.00	7,550.00	16,520.00	10,850.00	20,235.00
Varnish	Gal.	240.00	213.00	220.00	650.00	565.00	610.00
Manoline Hair Grease	Kg.	5,040.00	5,939.00	3,301.00	3,822.00	2,889.60	4,729.20
Thinner	Gal.	750.00	1,600.00	800.00	1,200.00	1,500.00	2,470.00
Rubbing Alcohol	Litre	20,945.00	44,542.00	-	45,171.61	34,339.41	4,899.21
Powder Soap	Kg.	79,042.00	70,171.00	52,434.00	60,443.10	67,882.95	49,560.75
Chlorox	Litre	15,750.00	21,546.00	21,777.00	52,963.51	62,024.80	60,355.61
Nail	Kg.	-	-	-	-	-	-
Candle	Kg.	41,748.00	51,135.00	44,457.00	53,298.00	52,594.50	58,338.00
Mattresses	Pcs.	13,750.00	11,300.00	9,889.00	7,010.00	7,290.00	11,504.00
Finished Water ¹	Gal.	102,199,432.00	120,634,490.60	110,392,375.01	na	na	na

1: Water from White Plains Treatment Plant

*Revised

Sources : Ministries of Planning & Economic Affairs; Lands, Mines & Energy; Commerce & Industry; and Liberia Institute of Statistics & Geo-Information Services (LISGIS); Forestry Development Authority (FDA); Liberia Produce Marketing Corporation (LPMC); Bridgeway Corporation, and Liberia Water & Sewer Corporation (LWSC), Monrovia, Liberia

REAL SECTOR

CENTRAL BANK OF LIBERIA

2.4a: Key Output Value - 2008

Liberian dollars

Commodity	Unit	Jan-08	Feb-08	Mar-08	Apr-08	May-08	Jun-08	Jan-Jun Total
Agriculture								
Rubber ³	Mt.	1,250,170,296	1,134,540,384	1,112,500,813	732,807,366	1,973,297,473	990,435,535	7,193,751,867
Cocoa Beans ⁴	Mt.	44,226,008	22,787,186	9,999,938	7,197,900	3,000,575	4,403,725	91,615,332
Coffee ⁴	Mt.	-	-	-	88,664	-	-	88,664
Round Logs ³	M ³	-	-	-	-	-	-	-
Sawn Timber ⁴	Pcs.	3,075,377	3,757,523	4,035,813	4,230,283	3,209,693	3,524,631	21,833,320
Fish ⁴	Kg.	-	-	-	-	-	-	-
Mining⁴								
Gold	Ounces	82,265,921	80,283,219	84,651,738	72,797,790	77,381,909	70,397,075	467,777,652
Diamond	Carat	37,389,502	31,548,822	42,294,270	56,031,496	31,914,845	116,774,364	315,953,299
Manufacturing⁴								
Cement	Mt.	124,092,418	158,047,451	149,522,625	2,659,607	130,960,317	86,374,796	651,657,214
Spirit	Litre	6,083,500	5,500,900	6,310,000	4,762,100	4,172,725	5,262,525	32,091,750
Beer	Litre	47,994,960	63,042,945	66,631,295	65,215,185	64,722,480	57,019,125	364,625,990
Stout	Litre	31,078,750	39,105,000	42,315,000	43,208,750	46,357,500	40,058,750	242,123,750
Malta	Litre	7,724,070	10,249,740	10,143,720	9,575,145	8,909,100	7,797,600	54,399,375
Soft Drink	Litre	37,557,890	37,558,610	37,556,450	14,005,630	23,303,400	23,918,720	173,900,700
Oil Paint	Gal.	1,583,851	1,158,696	1,566,000	330,970	767,136	524,256	5,930,909
Water Paint	Gal.	1,458,659	1,758,688	2,435,672	650,384	2,448,611	1,795,907	10,547,921
Varnish	Gal.	445,458	325,883	440,438	93,085	215,757	147,447	1,668,068
Manoline Hair Grease	Kg.	670,349	319,770	712,500	581,901	435,873	590,550	3,310,943
Thinner	Gal.	62,274	69,409	124,313	58,002	36,386	25,146	375,530
Rubbing Alcohol	Litre	245,826	253,308	258,750	154,235	429,556	357,188	1,698,863
Powder Soap	Kg.	526,884	699,105	656,250	775,868	612,749	1,162,050	4,432,906
Chlorox	Litre	886,657	855,228	917,500	969,522	1,063,151	939,483	5,631,541
Nail	Kg.	na	na	na	na	na	na	-
Candle	Kg.	2,447,154	2,648,762	2,716,875	2,513,437	2,529,327	2,179,320	15,034,875
Mattresses	Pcs.	18,380,164	19,024,096	18,278,539	21,355,506	21,066,215	18,777,453	116,881,973
Deep Well Water ^{1*}	Gal.	1,145,247	1,138,285	1,197,463	1,160,332	na	na	4,641,327
Finished Water ^{2*}	Gal.	5,597,087	4,600,345	8,970,674	6,389,369	na	na	25,557,475

1. Water from drilled wells

2. Water from White Plains Treatment Plant.

3. Represents Export values

4. Represents quantity sold, not quantity produced

* Estimates

Source: Ministries of Planning & Economic Affairs; Lands, Mines & Energy; Commerce & Industry; Forestry Development Authority (F.D.A.);

Liberia Produce Marketing Corporation (LPMC); Bridgeway Corporation, Liberia Water & Sewer Corporation (LWSC), Monrovia, Liberia

REAL SECTOR

CENTRAL BANK OF LIBERIA

2.4a: Key Output Value - 2008 continued

Liberian dollars

Commodity	Unit	Jul-08	Aug-08	Sep-08	Oct-08	Nov-08	Dec-08	Jul-Dec Total	Grand Total
Agriculture									
Rubber ³	Mt.	1,117,495,592	1,844,644	1,552	17,726	21,271	414,478,172	1,533,858,957	8,727,610,824
Cocoa Beans ⁴	Mt.	88,738,075	1,737,360	19,907,250	na	na	na	110,382,685	201,998,017
Coffee ⁴	Mt.	-	2,202,656	6,617,763	na	na	na	8,820,419	8,909,083
Round Logs ³	M ³	-	-	-	-	-	-	-	-
Sawn Timber ⁴	Pcs.	3,302,851	2,192,261	2,220,485	3,115,438	3,528,620	3,265,624	17,625,279	39,458,599
Fish ⁴	Kg.	-	-	-	-	-	-	-	-
Mining⁴									
Gold	Ounces	74,440,594	62,913,375	47,817,705	26,812,183	84,160,634	75,328,436	371,472,927	839,250,579
Diamond	Carat	136,916,003	66,994,999	66,364,772	31,049,880	3,530,867	12,752,311	317,608,831	633,562,130
Manufacturing⁴									
Cement	Mt.	135,928,989	87,070,883	59,739,233	78,429,803	56,899,112	53,481,253	471,549,273	1,123,206,487
Spirit	Litre	5,726,000	7,557,750	7,722,250	6,124,900	5,244,825	7,790,400	40,166,125	72,257,875
Beer	Litre	75,127,385	47,013,255	47,611,900	56,861,135	58,682,680	122,659,060	407,955,415	772,581,405
Stout	Litre	44,331,250	44,827,500	33,385,000	39,956,250	40,595,000	85,826,250	288,921,250	531,045,000
Malta	Litre	8,718,435	3,655,125	6,333,840	-	7,394,895	15,658,470	41,760,765	96,160,140
Soft Drink	Litre	31,132,450	23,554,220	21,529,740	26,531,070	29,000,130	51,142,120	182,889,730	356,790,430
Oil Paint	Gal.	556,006	1,405,382	1,347,468	785,813	1,309,688	1,496,809	6,901,166	12,832,075
Water Paint	Gal.	2,219,579	3,196,527	2,372,033	1,957,864	4,596,321	5,486,610	19,828,934	30,376,855
Varnish	Gal.	139,002	351,346	336,867	196,453	327,422	326,339	1,677,428	3,345,496
Manoline Hair Grease	Kg.	685,800	247,650	180,890	265,818	512,649	542,669	2,435,476	5,746,419
Thinner	Gal.	79,375	71,120	50,141	45,085	105,410	156,959	508,090	883,620
Rubbing Alcohol	Litre	334,010	264,001	254,197	354,108	412,334	314,994	1,933,644	3,632,507
Powder Soap	Kg.	679,450	752,475	510,394	939,857	697,772	629,419	4,209,367	8,642,273
Chlorox	Litre	968,693	625,475	727,684	706,316	1,004,096	2,365,780	6,398,044	12,029,585
Nail	Kg.	na	na	na	na	na	na	na	na
Candle	Kg.	2,616,835	2,372,995	1,812,703	2,250,592	2,278,440	2,372,509	13,704,074	28,738,949
Mattresses	Pcs.	18,005,351	15,733,893	21,286,875	18,726,047	15,481,988	na	89,234,155	206,116,128
Deep Well Water ^{1*}	Gal.	na	na	na	na	na	na	na	na
Finished Water ^{2*}	Gal.	na	na	na	na	na	na	na	na

1. Water from drilled wells

2. Water from White Plains Treatment Plant.

* Estimates

**Preliminaries

3. Represents Export values

4. Represents quantity sold, not quantity produced

Source s: Ministries of Planning & Economic Affairs; Lands, Mines & Energy; Commerce & Industry; Forestry Development Authority (F.D.A.);

Liberia Produce Marketing Corporation (LPMC); Bridgeway Corporation, Liberia Water & Sewer Corporation (LWSC), Monrovia, Liberia

REAL SECTOR

CENTRAL BANK OF LIBERIA

2.4b: Key Output Value - 2009

Liberian dollars

Commodity	Unit	Jan-09	Feb-09	Mar-09	Apr-09	May-09	Jun-09	Jan-Jun Total
Agriculture								
Rubber ³	Mt.	150,697	447,656	380,763	561,394	153,335	350,103	2,043,948
Cocoa Beans ⁴	Mt.	-	-	-	-	-	-	-
Coffee ⁴	Mt.	-	-	-	-	-	-	-
Round Logs ³	M ³	-	-	-	-	-	-	-
Sawn Timber ⁴	Pcs.	1,886,492	2,075,442	3,014,846	3,461,659	4,431,250	3,407,481	18,277,170
Fish ⁴	Kg.	-	-	-	-	-	-	-
Mining⁴								
Gold	Ounces	63,907,972	80,681,591	74,789,457	73,561,123	90,932,136	78,614,719	462,486,998
Diamond	Carat	50,158,122	21,399,746	11,146,896	132,128,828	139,011,974	63,869,174	417,714,739
Manufacturing⁴								
Cement	Mt.	75,705,659	100,961,721	92,279,820	113,944,022	142,699,419	74,900,382	600,491,023
Spirit	Litre	3,317,250	3,202,250			5,177,250	5,403,500	17,100,250
Beer	Litre	49,838,615	64,053,595	77,246,015	107,018,865	59,271,405	85,615,115	443,043,610
Stout	Litre	28,261,250	44,033,750	47,995,000	54,870,250	75,161,470	62,388,400	312,710,120
Malta	Litre	6,580,935	8,106,255	9,364,815	8,092,035	8,362,305	21,935,445	62,441,790
Soft Drink	Litre	34,532,460	35,086,110	43,443,840	44,569,150	42,513,220	40,831,050	240,975,830
Oil Paint	Gal.	673,398	1,205,441	857,463	514,098	2,012,852	1,524,869	6,788,121
Water Paint	Gal.	1,458,659	1,758,688	2,435,672	4,238,837	5,590,521	7,861,732	23,344,109
Varnish	Gal.	168,350	301,360	214,366	128,525	503,213	381,217	1,697,031
Manoline Hair Grease	Kg.	378,907	465,948	354,463	711,828	488,952	226,915	2,627,013
Thinner	Gal.	62,274	69,409	124,313	82,388	67,910	296,735	703,029
Rubbing Alcohol	Litre	306,734	261,548	235,660	210,912	507,457	161,459	1,683,770
Powder Soap	Kg.	683,064	496,650	749,826	693,538	987,921	601,150	4,212,149
Chlorox	Litre	742,671	736,913	1,252,631	767,687	842,933	1,006,426	5,349,261
Nail	Kg.	-	-	-	-	-	-	-
Candle	Kg.	2,065,946	2,484,806	2,791,560	1,587,113	2,211,829	3,589,446	14,730,700
Mattresses	Pcs.	-	-	-	-	-	-	-
Finished Water ^{2*}	Gal.	14,505,894	14,426,087	14,018,070	18,296,154	12,007,475	17,417,385	90,671,065

1. Water from drilled wells

2. Water from White Plains Treatment Plant.

3. Represents Export values

4. Represents quantity sold, not quantity produced

*Revised

**Preliminary

Source s: Ministries of Planning & Economic Affairs; Lands, Mines & Energy; Commerce & Industry; Forestry Development Authority (F.D.A.); Liberia Produce Marketing Corporation (LPMC); Bridgeway Corporation, Liberia Water & Sewer Corporation (LWSC), Monrovia, Liberia

REAL SECTOR

CENTRAL BANK OF LIBERIA

2.4b: Key Output Value - 2009-continued

Liberian dollars

Commodity	Unit	Jul-09	Aug-09	Sep-09	Oct-09	Nov-09	Dec-09	Jul-Dec Total	Grand Total
Agriculture									
Rubber ³	Mt.	436,935*	533,879**	455,610	288,523	218,593	100,738	1,063,464	3,107,412
Cocoa Beans ⁴	Mt.	-	-	49,217,700.00	99,487,080.00	49,397,100.00	-	198,101,880.00	198,101,880.00
Coffee ⁴	Mt.	-	-	-	-	-	-	-	-
Round Logs ³	M ³	-	-	-	-	-	-	-	-
Sawn Timber ⁴	Pcs.	3,538,846	2,140,853	2,088,828	2,380,153	3,157,248	3,076,852	16,382,780	34,659,949
Fish ⁴	Kg.	-	-	-	-	-	-	-	-
Mining⁴									
Gold	Ounces	52,760,398	46,032,385	109,317,476	103,608,060	115,887,280	139,688,724	567,294,323	1,029,781,321
Diamond	Carat	55,064,747	37,269,855	37,650,958	44,971,268	29,118,160	88,347,306	292,422,294	710,137,033
Manufacturing⁴									
Cement	Mt.	76,539,577	43,261,950	128,919,203	99,692,443	67,699,585	50,117,761	466,230,518	1,066,721,541
Spirit	Litre	4,417,500	5,498,125	5,792,275	5,646,600	5,885,275	5,603,300	32,843,075	49,943,325
Beer	Litre	94,916,185	44,678,445	97,636,985	54,406,005	91,725,880	97,308,540	480,672,040	923,715,650
Stout	Litre	66,465,040	33,487,120	57,028,880	23,161,760	52,079,760	70,993,120	303,215,680	615,925,800
Malta	Litre	12,050,010	5,956,650	-	-	12,124,875	14,352,380	44,483,915	106,925,705
Soft Drink	Litre	39,736,810	28,190,020	52,932,140	54,739,590	68,605,190	74,369,340	318,573,090	559,548,920
Oil Paint	Gal.	1,904,058	1,738,528	2,225,496	3,359,304	2,643,103	2,820,896	14,691,385	21,479,506
Water Paint	Gal.	6,200,987	6,950,776	5,219,929	8,513,826	10,146,988	13,240,750	50,273,256	73,617,365
Varnish	Gal.	476,015	434,632	556,374	839,826	660,776	705,224	3,672,847	5,369,878
Manoline Hair Grease	Kg.	735,885	433,260	-	-	-	-	1,169,145	4,319,345
Thinner	Gal.	355,500	252,735	249,655	717,800	869,819	576,385	3,021,894	3,724,923
Rubbing Alcohol	Litre	290,799	330,361	-	-	193,910	322,606	1,137,676	3,239,336
Powder Soap	Kg.	462,861	357,440	-	-	-	-	820,301	5,032,450
Chlorox	Litre	1,438,709	935,107	-	-	940,540	1,734,410	5,048,766	13,164,424
Nail	Kg.	-	-	-	-	-	-	-	-
Candle	Kg.	1,881,306	2,115,753	-	-	4,029,188	2,681,886	10,708,133	30,325,537
Mattresses	Pcs.	20,491,325	11,084,657	15,884,375	19,501,091	20,950,037	19,412,993	107,324,477	107,324,477
Finished Water ^{2*}	Gal.	na	na	na	na	na	na	na	90,671,065

1. Water from drilled wells
2. Water from White Pl: *Revised NB: Production data are collected quarterly.
3. Represents Export va **Preliminary
4. Represents quantity sold, not quantity produced

Source: Ministries of Planning & Economic Affairs; Lands, Mines & Energy; Commerce & Industry; Forestry Development Authority (F.D.A.); Liberia Produce Marketing Corporation (LPMC); Bridgeway Corporation, Liberia Water & Sewer Corporation (LWSC), Monrovia, Liberia

REAL SECTOR

CENTRAL BANK OF LIBERIA

2.4c: Key Output Value - 2010 (continued)

Liberian dollars

Commodity	Unit	July-10	Aug-10	Sep-10	Oct-10	Nov-10	Dec-10
Agriculture							
Rubber ³	Mt.	1,115,267,927	940,520,388	1,167,576,367	5,709.46	5,597	4,800.53
Cocoa Beans ⁴	Mt.	31,402,776	56,185,296	61,558,968	648.30	964	1,255.68
Coffee ⁴	Mt.	477,114	-	-	27.30	-	-
Round Logs ³	M ³	9,274,019	-	-	-	1,230	-
Sawn Timber ⁴	Pcs.	1,263,311.12	1,837,223	1,255,334.46	40,047.00	42,381.00	35,294.00
Fish ⁴	Kg.	-	-	-	-	-	-
Mining⁴							
Gold	Ounces	62,766,920.00	146,077,587.08	156,059,323.00	1,355.60	1,127.96	1,828.71
Diamond	Carat	38,241,935	15,561,267	66,738,447	4,906.01	144	3,216.24
Manufacturing⁴							
Cement	Mt.	65,514,764	39,438,623	55,225,778	4,025.00	3,137	2,782.00
Spirit	Litre	25,042,500	4,986,250	4,785,250	75,140.10	65,552	93,210.75
Beer	Litre	92,207,250	61,169,290	58,587,785	603,015.16	679,755	920,246.12
Stout	Litre	72,991,920	48,652,160	53,160,480	284,225.04	432,202	667,069.92
Malta	Litre	10,166,805	6,581,565	6,162,390	99,649.44	84,578	29,755.44
Soft Drink	Litre	53,792,695	40,479,550	44,397,575	804,578.40	1,293,091	1,293,091.20
Oil Paint	Gal.	2,775,705	2,466,334	1,544,545	2,600.00	10,850	2,440.00
Water Paint	Gal.	7,254,703	6,268,658	5,022,725	16,520.00	10,850	20,235.00
Varnish	Gal.	693,926	616,584	386,136	650.00	565	610.00
Manoline Hair Grease	Kg.	721548.8999	477687.275	525,774.00	3,822.00	2,889.60	4,729.20
Thinner	Gal.	766,997	1,078,800	746,522	1,200.00	1,500	2,470.00
Rubbing Alcohol	Litre	143,570	409,091	346,831	45,171.61	34,339	4,899.21
Powder Soap	Kg.	4,499,647	4,141,309	4,089,645	60,443.10	67,883	49,560.75
Chlorox	Litre	2,497,040	2,562,075	2,366,638	52,963.51	62,025	60,355.61
Nail	Kg.	-	-	-	-	-	-
Candle	Kg.	8,351,852	7,123,965	6,988,648.00	53,298.00	52,594.50	58,338.00
Mattresses	Pcs.	22,280,815	18,135,265	15,283,836.00	7,010.00	7,290.00	11,504.00
Finished Water ^{2*}	Gal.	25,442,371	27,532,390	25,237,964.33	na	na	na

1. Water from drilled wells

2. Water from White Plains Treatment Plant.

3. Represents Export values

4. Represents quantity sold, not quantity produced

NB: Production data are collected quarterly.

Source: Ministries of Planning & Economic Affairs; Lands, Mines & Energy; Commerce & Industry; Forestry Development Authority (F.D.A.);

Liberia Produce Marketing Corporation (LPMC); Bridgeway Corporation, Liberia Water & Sewer Corporation (LWSC), Monrovia, Liberia

GOVERNMENT FINANCE

CENTRAL BANK OF LIBERIA

3.1: Government Revenue 2008-2010

Millions of Liberian Dollars

Revenue Category	2008				2009						2010					
	Jan-Mar Actual	Apr-Jun Actual	Jul-Sep Actual	Oct-Dec Actual	Jan-Feb* Actual	Mar-Apr Actual	May-Jun Actual	Jul-Aug Actual	Sep-Oct Actual	Nov-Dec Actual	Jan-Feb Actual	March-April Actual	May-June* Actual	Jul-Aug Actual	Sep-Oct Actual	Nov-Dec Actual
Customs and Excise	1,258.2	1,268.6	1,388.9	1,459.1	880.4	906.8	1,058.7	1,117.2	1,152.3	960.0	2,459.2	1,538.2	15,412.0	2,126.14	1,265.75	1,306.39
Direct Taxes	1,116.0	1,057.8	923.8	856.2	883.0	1,217.5	776.6	780.4	774.3	557.2	984.5	1,453.0	8,168.0	1,097.00	2,220.98	851.20
Indirect Taxes	699.3	846.3	374.7	273.7	337.2	590.5	468.0	443.9	275.4	740.9	954.4	381.0	9,875.0	387.59	1,138.52	510.04
FDA ¹ Levy	13.5	17.0	17.1	10.1	1.9	128.4	9.2	9.9	50.7	217.0	130.3	6.6	2,685.0	0.01	48.29	-
Petroleum Sales Levy	111.8	121.7	123.0	130.0	102.8	5.4	113.8	112.5	155.8	117.7	6.2	133.6	1,805.0	129.27	53.67	132.30
Maritime	198.2	246.7	176.1	229.4	203.7	49.3	185.0	166.5	79.3	365.2	144.6	111.2	3,788.00	0.13	103.57	557.50
Grant	272.8	104.6	-	7.9	774.8	-	795.9	-	293.3	-	-	-	696.0	-	-	1,031.46
Total	3,669.8	3,662.7	3,003.6	2,966.4	3,183.8	2,897.9	3,407.2	2,630.4	2,781.1	2,958.0	4,679.2	3,623.6	42,429.0	3,740.14	4,830.78	4,388.89

* Revised

3.2: Government Expenditure 2007-2009

Millions of Liberian Dollars

Expenditure Category	2008				2009						2010					
	Jan-Mar Actual	Apr-Jun Actual	Jul-Sep Actual	Oct-Dec Actual	Jan-Feb Actual	Mar-Apr Actual	May-Jun Actual	Jul-Aug Actual	Sep-Oct Actual	Nov-Dec Actual	Jan-Feb Actual	March-April Actual	May-June Actual	Jul-Aug Actual	Sep-Oct Actual	Nov-Dec Actual
General Administration ²	1,144.6	1,199.4	1,474.9	1,565.1	926.9	1,137.0	1,016.0	832.3	1,686.5	1,066.5	1,757.1	1,313.5	951.84	785.18	2,217.50	2265.4
Social and Community Services	598.8	671.7	871.5	1,030.7	623.7	926.3	797.7	633.3	664.6	700.8	1,226.2	1,011.4	1011.35	290.66	566.60	1395.04
Economic Services	285.7	256.5	161.1	273.3	101.5	167.7	124.6	171.0	143.5	142.5	149.8	192.2	245.09	86.11	107.30	243.06
GOL Special Commitment	-	-	-	-	-	-	-	-	-	-	-	-	-	-	-	-
Development Expenditure	-	-	-	-	-	-	-	-	-	-	-	-	-	-	-	-
Other Expenditures ³	846.0	1,431.8	1,107.5	1,405.5	332.6	787.7	693.3	1,408.50	1064.24	1,101.8	695.8	380.8	753.65	175.8	311.2	571.98
Total	2,875.1	3,559.4	3,615.0	4,274.6	1,984.8	3,018.7	2,631.5	3,045.1	3,558.8	3,011.7	3,828.9	2,897.9	2,961.9	1,337.8	3,202.6	4,475.5

1: Forestry Development Authority (FDA)

*Preliminary

2: General Administration includes Security Service Sector

3: Other Expenditures includes what was previously Development and Commitment

Source: Ministry of Finance, Monrovia, Liberia

GOVERNMENT FINANCE

CENTRAL BANK OF LIBERIA

3.3: Functional Classification of Government Expenditure 2008-2010

Millions of Liberian Dollars

Functional Classification	Jan-Jun 2008 Actual	Jul-Dec 2008 Actual	Jan-Feb 2009 Actual	Mar-Apr 2009 Actual	May-Jun 2009 Actual	Jul-Aug 2009 Actual	Sep-Oct 2009 Actual	Nov-Dec 2009 Actual	Jan-Feb 2010 Actual	March-April 2010 Actual	May-June 2010 Actual	Jul-Aug 2010 Actual	Sep-Oct 2010 Actual	Nov-Dec 2010 Actual
General Administration *	2,343.9	3,039.9	926.9	1,137.0	1,016.0	832.3	1,686.5	1,066.5	1,757.1	1,313.5	951.84	785.20	2,217.50	2265.36
National Legislature	521.5	483.5	84.6	155.8	224.5	131.3	317.1	211.2	390.0	269.1	119.83	169.00	273.90	345.3
Executive Policy	885.4	1,197.4	285.5	405.1	339.3	282.0	524.0	355.1	516.1	527.4	333.17	211.00	998.10	1070.39
Internal Management Services	133.4	197.2	36.3	42.7	48.8	71.0	70.7	56.7	100.4	86.5	55.27	44.10	119.00	123.16
Protection of Person & Property	476.6	784.6	275.1	330.7	260.4	237.9	660.3	257.5	550.9	300.0	376.92	220.40	477.10	389.13
Foreign Affairs	265.2	192.2	64.9	87.3	105.7	75.4	84.3	136.5	132.0	47.6	39.79	9.70	66.20	150.89
Defence	61.8	185.1	180.6	115.5	37.2	34.6	30.1	49.4	67.8	82.9	26.87	130.90	108.50	186.5
Social & Community Services	1,270.5	1,902.2	623.7	926.3	797.7	633.3	664.6	700.8	1,226.2	1,011.4	1,011.4	290.70	566.60	1,395.04
Social Services	766.2	1,156.8	383.2	392.7	561.3	445.4	462.7	520.5	684.9	372.5	582.04	238.50	438.00	1106.05
Community Services	504.3	745.4	240.5	533.6	236.3	187.9	202.0	180.3	541.3	638.9	429.31	52.20	128.60	288.99
Economic Services	542.2	434.4	101.5	167.7	124.6	171.0	143.5	142.5	149.8	192.3	245.1	86.10	107.30	243.06
Primary	212.9	144.0	50.9	102.1	33.5	39.4	31.8	64.1	76.5	64.9	32.69	15.60	30.10	51.4
Secondary	329.3	290.4	50.5	65.6	91.1	131.6	111.7	78.4	73.3	127.4	212.4	70.50	77.20	191.66
Other Expenditure	2,277.8	2,513.0	332.6	787.7	693.3	1,408.5	1,064.2	1,101.8	695.8	380.8	753.65	175.80	311.20	571.98
Development	-	-	-	-	-	-	-	-	-	-	-	-	-	-
Total	6,434.4	7,889.5	1,984.8	3,018.7	2,631.5	3,045.0	3,558.8	3,011.7	3,828.9	2,898.0	2,961.9	1,337.80	3,202.60	4,475.44

* Also includes the Security Services Sector

3.4: Summary Estimates of Liberia's Public Debt Profile and Status

as at End-December 2010

(In Millions US\$)

External Debt	Current	Percentage Distribution
Multilateral	1052.1	26.9
Bilateral	727.9	18.6
O/W		
Paris Club	608.4	
Non-Paris Club	119.5	
Commercials	1,233.80	31.5
O/W		
Financial Institutions	1,148.00	
Suppliers' Credit	85.80	
Sub-Total	3,013.80	
Domestic Debt	903.9	23.1
Sub-Total	903.9	
Total Stock of Debt	3,917.70	100.0

Source : Ministry of Finance, Monrovia, Liberia

EXTERNAL TRADE

CENTRAL BANK OF LIBERIA

4.1: Exports and Imports 2008-2010*(Millions of United States Dollars)*

Period	2008		2009		2010		Balance of Trade		
	Exports	Imports	Exports	Imports	Exports	Imports	2008	2009	2010
Jan	22.8	71.5	18	97.4	19.3	33.9	(48.7)	(79.4)	(14.6)
Feb	21.1	42.4	24.8	47.9	11.4	25.4	(21.3)	(23.1)	(14.0)
Mar	20.7	63.1	11.3	57.7	19.7	34.2	(42.4)	(46.4)	(14.5)
Apr	14.8	85.0	12.4	36.9	16.3	71.0	(70.2)	(24.5)	(54.7)
May	33.8	56.6	9.2	51.7	32.1	80.00	(22.8)	(42.5)	(47.9)
Jun	19.1	46.5	11.1	55.9	12.1	90.1	(27.4)	(44.8)	(78.0)
Jul	22.3	34.3	11.7	51.8	24.7	65.2	(12.0)	(40.1)	(40.5)
Aug	21.3	121.9	13.4	34.3	54.5	75.5	(100.6)	(20.9)	(21.0)
Sep	20.7	106.3	10.3	34.5	19.6	65.0	(85.6)	(24.2)	(45.4)
Oct	19.8	99.7	10.2	43.6	17.2	68.5	(79.9)	(33.4)	(51.3)
Nov	17.0	47.4	9.6	20.0	12.4	65.3	(30.4)	(10.4)	(52.9)
Dec	9.0	38.7	8.0	20.0	13.7	67.1	(29.7)	(12.0)	(53.4)
Total	242.4	813.4	150.0	551.7	253.0	741.2	(571.0)	(401.7)	(488.2)

4.2a: Commodity Composition of Exports-2008*(Thousands of United States Dollars)*

Commodity	Jan	Feb	Mar	Apr	May	June	Jan-Jun Total
Rubber	19,693.9	18,094.7	17,800.0	11,711.8	31,237.9	15,597.4	114,135.8
Cocoa beans	161.0	161.0	136.5	231.0	340.9	343.5	1,373.9
Coffee	0.0	0.0	0.0	13.8	0.0	0.0	13.8
Round Logs	0.0	0.0	0.0	0.0	156.6	0.0	156.6
Iron Ore	0.0	0.0	270.0	0.0	0.0	0.0	270.0
Gold	589.0	503.2	676.7	895.5	505.2	1,839.0	5,008.6
Diamond	1,295.9	1,280.4	1,354.4	1,163.5	1,225.0	1,108.6	7,427.9
Other Commodities	1,024.7	1,034.6	516.7	790.2	348.8	220.5	3,935.6
Total	22,764.6	21,073.9	20,754.4	14,805.9	33,814.4	19,109.0	132,322.1

Commodity	Jul	Aug	Sep	Oct	Nov	Dec	Jul-Dec Total	Grand Total
Rubber	17,598.4	17,744.2	18,110.1	17,726.7	14,957.4	6,548.9	92,685.7	206,821.4
Cocoa beans	0.0	324.0	42.0	531.4	533.7	544.0	1,975.1	3,349.0
Coffee	0.0	0.0	0.0	0.0	0.0	0.0	0.0	13.8
Round Logs	0.0	0.0	0.0	0.0	0.0	0.0	0.0	156.6
Iron Ore	1,200.0	0.0	0.0	0.0	0.0	0.0	1,200.0	1,470.0
Gold	2,156.2	1,055.0	1,045.6	489.0	55.8	201.5	5,003.1	10,011.6
Diamond	1,172.3	990.8	753.4	422.2	1,329.3	1,190.2	5,858.2	13,286.1
Other Commodities	159.2	1,180.4	729.1	636.8	135.3	509.1	3,349.9	7,285.5
Total	22,286.0	21,294.4	20,680.2	19,806.1	17,011.6	8,993.7	110,072.0	242,394.1

Source: Ministry of Commerce & Industry and Ministry of Lands, Mines and Energy, Monrovia, Liberia

EXTERNAL TRADE

CENTRAL BANK OF LIBERIA

4.2b: Commodity Composition of Exports-2009

(Thousands of United States Dollars)

Commodity	Jan	Feb	Mar	Apr	May	Jun	Jan-Jun Total
Rubber	6,513.5	12,584.9	7,919.4	8,517.6	2,862.7	8,365.1	46,763.2
Cocoa beans	75.0	336.6	364.0	538.4	477.6	0.0	1,791.6
Coffee	0.0	0.0	0.0	0.0	0.0	7.5	7.5
Round Logs	505.9	0.0	549.8	0.0	0.0	14.6	1,070.3
Iron Ore	0.0	0.0	0.0	0.0	0.0	0.0	0.0
Diamond	778.4	331.8	171.7	722.8	2,047.0	914.8	4,966.5
Gold	991.7	1,250.9	1,152.0	1,116.1	1,339.0	1,126.0	6,975.7
Other Commodities	9,129.7	10,293.7	1,096.5	1,560.2	2,499.9	706.8	25,286.8
Total	17,994.2	24,797.9	11,253.4	12,455.1	9,226.2	11,134.7	86,861.5

Commodity	Jul	Aug	Sep*	Oct**	Nov*	Dec**	Jul-Dec Total	Grand Total
Rubber	10,217.1	11,785.0	6,996.6	7,151.8	7,551.4	2,629.0	46,330.9	93,094.1
Cocoa beans	42.50	324.00	358.38	324.15	40.00	728.89	1,817.9	3,609.5
Coffee	0.00	128.50	0.00	0.00	0.00	0.00	128.5	136.0
Round Logs	-	0.00	0.00	0.00	26.49	29.31	55.8	1,126.0
Iron Ore	300.00	0.00	0.00	630.00	0.00	0.00	930.0	930.0
Diamond	2.91	0.00	1163.21	0.00	97.99	1302.87	2,567.0	7,533.4
Gold	637.48	0.00	1196.72	0.00	1567.69	2060.00	5,461.9	12,437.6
Other Commodities	443.73	1,132.55	627.18	2095.32	318.34	1270.53	5,887.6	31,174.4
Total	11,643.71	13,370.00	10,342.09	10,201.28	9,602.0	8,020.6	63,179.6	150,041.1

4.2c: Commodity Composition of Exports-2010

(Thousands of United States Dollars)

Commodity	Jan	Feb	March	April	May	June	Jan-Jun Total
Rubber	14,410.6	10,679.5	18,110.8	4,157.8	28,628.2	8,818.0	84,804.9
Cocoa beans	692.3	24.0	648.3	614.4	0.0	62.0	2,041.0
Coffee	0.0	0.0	0.0	250.0	0.0	13.6	263.6
Round Logs	0.0	23.0	0.0	506.6	0.0	773.2	1,302.8
Iron Ore	0.0	0.0	1.0	1.0	450.0	0.0	452.0
Gold	527.8	626.5	0.0	7,577.8	398.4	674.2	9,804.8
Diamond	1,532.6	1,443.4	0.0	2,295.0	1,888.1	1,488.4	8,647.5
Other Commodities	2,166.1	671.6	909.2	853.8	772.3	253.2	5,626.4
Total	19,329.4	13,468.1	19,669.4	16,256.4	32,136.9	12,082.6	112,942.9

Commodity	Jul	Aug	Sep*	Oct	Nov	Dec	Jul-Dec Total	Grand Total
Rubber	15,427.7	47,922.52	16,250.2	15,936.83	10,399.9	11,268.00	117,205.09	86,845.8
Cocoa beans	648.3	90.00	17.6	690.30	679.1	1,191.20	3,316.50	5,357.5
Coffee	-	-	-	-	-	-	-	263.6
Round Logs	25.0	927.03	29.4	-	441.8	363.30	1,786.59	3,089.4
Iron Ore	-	540.00	-	0.00	450.00	375.00	1,365.00	1,817.0
Diamond	-	-	928.86	-	-	-	928.86	10,733.6
Gold	868.3	2,014.86	2,172.0	-	0.0	-	5,055.14	13,702.7
Other Commodities	7,694.8	3,054.12	249.8	529.98	393.7	463.03	12,385.49	18,011.8
Total	24,664.1	54,548.5	19,647.9	17,157.1	12,364.5	13,660.5	142,042.67	254,985.6

* Revised

Source: Ministry of Commerce & Industry and Ministry of Lands, Mines and Energy, Monrovia, Liberia

EXTERNAL TRADE

CENTRAL BANK OF LIBERIA

4.3a: Commodity Composition of Imports-2008

Thousands of United States Dollars

Commodity	Jan	Feb	Mar	Apr	May	Jun	Jan-Jun Total
Food and Live Animals	25,936.4	5,440.2	17,167.3	7,460.1	12,230.7	3,242.6	71,477.3
O/w Commercial Rice	15,840.0	-	12,826.0	-	5,783.8	-	34,449.8
O/w Non-Commercial Rice	1,187.9	598.7	592.0	-	-	-	2,378.5
Beverage and Tobacco	887.9	208.6	1,152.8	1,683.9	1,773.8	1,284.0	6,991.1
Crude Materials	912.4	2,186.4	2,479.9	547.5	596.5	813.3	7,536.1
Mineral, Fuels, Lubricants	3,911.5	1,998.2	2,545.9	1,046.1	972.4	638.8	11,112.8
Animal and Vegetable Oil	305.8	340.3	773.4	243.1	-	-	1,662.6
Chemicals and Related Products	2,513.6	2,223.7	3,754.1	3,219.9	2,839.3	2,130.1	16,680.6
Manufactured Products	3,529.0	6,579.6	8,794.5	9,021.2	14,010.0	4,616.5	46,550.8
Machinery & Transport Equipment	19,922.2	11,048.6	8,813.1	51,470.9	17,081.6	8,526.1	116,862.4
Petroleum Products	6,201.0	11,636.9	13,913.0	7,185.0	3,582.5	22,917.3	65,435.6
Miscellaneous Articles ¹	7,373.9	704.9	3,711.3	3,122.4	3,518.5	2,371.1	20,802.1
Total	71,493.6	42,367.2	63,105.3	85,000.1	56,605.3	46,539.8	365,111.3

Commodity	Jul	Aug	Sep	Oct	Nov	Dec	Jul-Dec Total	Grand Total
Food and Live Animals	5,369.4	31,757.6	42,242.5	24,134.1	14,879.4	16,932.1	135,315.1	206,792.3
O/w Commercial Rice	-	23,705.2	24,086.7	12,450.0	-	10,950.0	71,191.9	105,641.7
O/w Non-Commercial Rice	698.0	682.5	4,218.2	699.2	-	-	6,297.9	8,676.4
Beverage and Tobacco	729.1	1,019.5	1,384.5	2,178.8	1,164.8	463.6	6,940.4	13,931.5
Crude Materials	1,251.3	594.0	939.5	1,060.8	1,279.1	285.4	5,410.1	12,946.1
Mineral, Fuels, Lubricants	291.3	666.5	471.8	461.3	110.7	309.3	2,310.9	13,423.7
Animal and Vegetable Oil	70.6	133.3	153.2	317.1	325.2	262.7	1,262.1	2,924.6
Chemicals and Related Products	1,889.8	5,014.7	3,973.2	5,690.5	1,991.0	1,231.7	19,790.9	36,471.5
Manufactured Products	3,760.5	19,845.4	11,073.1	11,797.4	6,231.4	5,475.6	58,183.5	104,734.3
Machinery & Transport Equipment	11,290.7	17,408.1	15,305.4	27,537.7	15,844.4	10,911.4	98,297.6	215,160.0
Petroleum Products	6,942.3	27,498.9	23,544.3	20,051.9	3,578.1	-	81,615.5	147,051.1
Miscellaneous Articles ¹	2,667.5	17,982.8	7,213.9	6,512.2	2,029.9	2,848.0	39,254.3	60,056.4
Total	34,262.3	121,920.8	106,301.4	99,741.8	47,434.1	38,719.8	448,380.2	813,491.5

1. Includes commodities and transactions not classified elsewhere.

*Actual

**Preliminary

Sources: Ministry of Commerce & Industry and Ministry of Finance, Monrovia, Liberia.

EXTERNAL TRADE

CENTRAL BANK OF LIBERIA

4.3b: Commodity Composition of Imports - 2009
 Thousands of United States Dollars

Commodity	Jan	Feb	Mar	Apr	May	Jun	Jan-Jun Total
Food and Live Animals	41,362.7	18,238.5	9,938.2	6,464.4	16,759.8	17,857.3	110,620.9
O/w Commercial Rice	23,809.7	14,204.7	346.5	-	8,655.4	10,708.3	57,724.6
O/w Non-Commercial Rice	739.7	-	1,393.6	-	1,096.7	47.7	3,277.6
Beverage and Tobacco	2,280.2	562.2	1,790.3	1,995.7	1,224.1	1,439.3	9,291.7
Crude Materials	3,739.1	680.2	3,252.7	1,006.7	1,099.4	1,260.7	11,038.9
Mineral, Fuels, Lubricants	2,680.8	526.5	1,049.1	922.9	1,480.2	1,301.8	7,961.2
Animal and Vegetable Oil	4,551.4	312.5	547.1	3,238.6	1,880.2	253.0	10,782.7
Chemicals and Related Products	3,264.6	1,507.4	3,738.5	2,766.4	1,917.7	2,365.2	15,559.7
Manufactured Products	9,621.4	2,919.2	6,354.3	4,220.4	18,749.3	7,891.8	49,756.3
Machinery & Transport Equipment	23,840.0	14,119.6	14,609.2	9,117.8	5,875.8	13,778.6	81,341.0
Petroleum Products	2,271.3	7,018.1	12,434.4	5,335.1	1,956.4	7,806.4	36,821.8
Miscellaneous Articles ¹	3,739.2	2,059.0	3,969.8	1,870.8	800.7	1,939.9	14,379.4
Total	97,350.5	47,943.2	57,683.6	36,938.8	51,743.5	55,894.0	347,553.5

Commodity	Jul	Aug	Sep*	Oct**	Nov*	Dec**	Jul-Dec Total	Grand Total
Food and Live Animals	9,533.1	6,915.4	8,661.1	12,267.2	4,757.8	8,999.2	51,133.8	161,754.7
O/w Commercial Rice	122.4	38.3	24.9	2,587.0	168.8	4,985.3	7,926.6	65,651.2
O/w Non-Commercial Rice	104.0	70.2	578.1	858.6	-	-	1,610.9	4,888.5
Beverage and Tobacco	1,088.4	2,046.5	1,272.1	2,602.2	1,091.5	1,198.1	9,298.8	18,590.5
Crude Materials	819.2	379.0	466.1	539.1	581.2	527.1	3,311.7	14,350.6
Mineral, Fuels, Lubricants	899.3	487.9	410.3	356.7	161.7	189.0	2,504.9	10,466.1
Animal and Vegetable Oil	-	571.9	290.66	273.4	-	221.4	1,357.4	12,140.0
Chemicals and Related Products	2,711.3	2,427.2	3,094.0	2,776.6	1,436.6	1,623.7	14,069.5	29,629.2
Manufactured Products	10,820.9	3,629.3	7,091.3	6,196.4	3,778.2	2,758.7	34,274.8	84,031.1
Machinery & Transport Equipment	10,901.7	4,491.2	8,681.8	11,443.4	4,702.4	3,582.9	43,803.3	125,144.3
Petroleum Products	13,135.6	11,568.9	2,727.5	4,240.4	-	-	31,672.4	68,494.2
Miscellaneous Articles ¹	1,848.1	1,746.6	1,804.0	2,909.7	3,445.1	855.0	12,608.5	26,987.9
Total	51,757.6	34,264.0	34,498.8	43,605.0	19,954.6	19,955.2	204,035.1	551,588.6

* Revised

**Preliminary

Sources: Ministry of Commerce & Industry and Ministry of Finance, Monrovia, Liberia.

EXTERNAL TRADE

CENTRAL BANK OF LIBERIA

4.3c: Commodity Composition of Imports - 2010

Thousands of United States Dollars

Commodity	Jan	Feb	March	April	May	June	Jan-Jun Total
Food and Live Animals	7,488.2	7,013.2	13,419.18	10,537.53	11,244.30	14,442.33	64,144.70
O/w Commercial Rice	1,065.3	1,853.2	5,099.00	4,291.16	3,146.57	84.24	15,539.54
O/w Non-Commercial Rice	1,288.1	524.3	529.36	218.46	1,164.00	-	3,724.22
Beverage and Tobacco	1,454.0	1,053.7	2,030.37	2,457.08	2,075.27	1,616.31	10,686.78
Crude Materials	237.9	384.9	565.52	516.34	428.32	964.32	3,097.27
Mineral, Fuels, Lubricants	2,809.1	398.4	1,186.26	599.68	14,000.75	39,100.78	58,094.92
Animal and Vegetable Oil	-	223.4	360.68	3,763.48	710.30	73.87	5,131.74
Chemicals and Related Products	2,258.9	2,830.3	1,558.52	2,650.80	3,433.41	2,564.84	15,296.81
Manufactured Products	3,558.3	833.6	3,328.57	9,496.20	6,950.22	3,586.99	27,753.91
Machinery & Transport Equipment	7,446.0	9,884.4	6,194.68	9,137.34	21,096.81	928.69	54,687.86
Petroleum Products	7,587.6	1,162.5	3,340.84	30,878.38	16,641.44	23,776.14	83,386.94
Miscellaneous Articles ¹	1,061.5	1,634.9	2,203.23	947.89	3,446.21	3,074.31	12,368.03
Total	33,901.5	25,419.3	34,187.9	70,984.7	80,027.0	90,128.6	334,648.9

Commodity	Jul	Aug	Sep*	Oct**	Nov	Dec	Jul-Dec Total	Grand Total
Food and Live Animals	18,027.94	19,655.84	31,122.06	29,482.00	31,666.00	31,028.70	160,982.53	225,127.24
O/w Commercial Rice	10,062.59	9,248.40	5,851.20	6,290.00	5,651.00	5,829.70	42,932.88	58,472.42
O/w Non-Commercial Rice	464.76	946.66	30.01	256.90	66.60	136.12	1,901.06	5,625.28
Beverage and Tobacco	1,439.36	1,487.26	1,078.68	1,154.10	1,073.50	1,099.23	7,332.12	18,018.90
Crude Materials	646.45	353.59	408.61	350.60	369.42	356.63	2,485.30	5,582.57
Mineral, Fuels, Lubricants	6,176.90	12,731.31	778.78	3,863.00	523.70	2,288.30	26,362.00	84,456.92
Animal and Vegetable Oil	288.48	252.45	982.87	854.90	997.89	952.73	4,329.32	9,461.06
Chemicals and Related Products	2,540.62	3,608.06	2,648.26	2,985.46	2,769.10	2,861.23	17,412.73	32,709.54
Manufactured Products	10,584.59	8,908.42	5,880.69	6,109.00	5,568.00	5,696.10	42,746.80	70,500.71
Machinery & Transport Equipment	14,107.93	10,544.51	15,134.97	13,775.50	14,765.00	14,373.30	82,701.21	137,389.07
Petroleum Products	6,176.90	12,731.31	778.78	3,863.00	1,357.00	288.30	25,195.30	108,582.23
Miscellaneous Articles ¹	5,211.76	5,225.52	6,169.28	6,013.10	6,195.31	6,137.82	34,952.79	47,320.82
Total	65,200.93	75,498.3	64,982.98	68,450.7	65,284.92	67,082.3	406,500.10	741,149.05

* Revised **Preliminary

Sources: Ministry of Commerce & Industry and Ministry of Finance, Monrovia, Liberia.

EXTERNAL TRADE

CENTRAL BANK OF LIBERIA

4.4: Volume of Imports of Petroleum Products-2008 - 2010

(Volume in gals.)

2008	Premium	Diesel	Kerosene	Jet fuel	Total
Jan	1,110,000	1,228,000	0	0	2,338,000
Feb	0	4,175,200	0	0	4,175,200
Mar	10,923	0	0	2,755	13,678
Apr*	1,433,750	921,000	0	96,000	2,450,750
May	370,000	767,500	0	0	1,137,500
Jun*	2,775,000	3,684,000	0	0	6,459,000
Jul*	370,000	1,535,000	0	0	1,905,000
Aug	3,293,000	4,816,830	0	800,000	8,909,830
Sep	1,295,000	3,782,240	0	1,184,000	6,261,240
Oct	4,671,085	1,780,600	50,817	768,000	7,270,502
Nov	407,000	859,600	0	32,000	1,298,600
Dec	0	0	0	0	0
Total	15,735,758	23,549,970	50,817	2,882,755	42,219,300

2009	Premium	Diesel	Kerosene	Jet fuel	Total
Jan	888,000	460,500	0	0	1,348,500
Feb	3,219,000	2,333,200	0	0	5,552,200
Mar	6,558,773	0	0	460,500	7,019,273
Apr*	2,405,000	460,500	0	800,000	3,665,500
May	451,000	728,818	0	64,000	1,243,818
Jun*	740,000	2,234,960	0	704,000	3,678,960
Jul*	1,541,050	4,808,234	0	704,000	7,053,284
Aug	3,212,094	959,682	0	576,000	4,747,776
Sep	514,670	0	0	0	514,670
Oct	1,128,500	614,000	0	480,000	2,222,500
Nov	407,000	859,600	0	32,000	1,298,600
Dec	0	0	0	0	0
Total	21,065,086	13,459,494	0	3,820,500	38,345,080

2010	Premium	Diesel	Kerosene	Jet fuel	Total
Jan	2,416,100	971,655	0	96,000	3,483,755
Feb	555,000	0	0	0	555,000
March	0	1,535,000	0	0	1,535,000
April	3,761,420	7,936,257	0	1,659,840	13,357,517
May	2,405,000	3,591,900	0	0	5,996,900
June	4,876,600	4,218,861	0	480,000	9,575,461
Jul	1,646,130	765,658	0	477,120	2,888,908
Aug	1,558,810	4,127,615	0	0	5,686,425
Sep*	481,000	153,500	0	0	634,500
Oct**	1,747	4,482	0	0	6,229
Nov	1,089,486	1,987,791	0	53,013	3,130,290
Dec	933,044	1,274,516	0	70,684	2,278,245
Total	17,219,060	23,146,946	0	2,712,960	43,554,474

* Revised

**Preliminary

Source: Ministry of Commerce & Industry and Central Bank of Liberia