

	Jun.10	Jul.10	Aug.10	Sep.10
<b>1 Monetary</b>	<i>(Millions of US\$)</i>			
CBL Net Foreign Exchange Reserves Position (Including SDRs)	270.7	274.7	278.2	281.4
	<i>(Millions of L\$)</i>			
Liberian Dollars in Circulation	4,413.1	4,554.5	4,539.9	4,583.7
Money Supply (M1) in L\$ only	4,612.3	4,729.1	4,710.2	5,004.2
Broad money (M2) in L\$ only	6,347.6	6,531.5	6,620.7	6,992.9
Broad money (M2) in both L\$ and US\$*	25,279.5	25,843.9	25,839.8	27,829.0
	<i>(In percent)</i>			
Liberian Dollar share of Broad Money	25.1	25.3	25.6	25.1
Interest Rates				
- Lending rate	14.2	14.3	14.2	14.4
-Average Deposit rates				
-Savings	2.2	2.2	2.4	2.0
-Time	4.2	4.1	3.0	2.9
	<i>(Millions of L\$)</i>			
Commercial banks loans to private sector - US\$	132.70	140.40	138.80	155.50
Commercial banks loans to private sector - L\$	696.8	735.2	644.4	682.5
- Demand Deposits of commercial banks				
Demand deposits - US\$	190.6	194.6	197.0	212.7
Demand deposits - L\$	1,043.6	897.7	1,038.6	1,208.2
- Time & Savings Deposits of commercial banks				
Time & savings deposits - US\$	70.6	71.0	67.4	74.3
Time & savings deposits - L\$	1,724.8	1,791.6	1,904.1	1,982.3
- Other Deposits**				
Actual US\$ component of other deposits	0.9	0.8	0.7	0.4
Liberian \$ component of savings deposits	10.5	10.8	6.3	6.4
Remittances	<i>(Millions of US\$)</i>			
Inflows	69.2	72.1	86.1	78.7
Outflows	86.6	92.8	88.5	90.1
Netflows	-17.4	-20.7	-2.3	-11.4
<b>2 CBL's Foreign Exchange Auction</b>	3.0	2.5	2.2	2.6
<b>3 Exchange Rate</b>	<i>L\$ per US\$</i>			
End of Period	72.25	72.50	72.50	72.50
Period Average	71.67	72.29	72.50	71.85
<b>4 Financial Soundness Indicators (FSI)</b>	<i>(In percent)</i>			
Capital adequacy ratio (CAR)***	25.7	24.6 <sup>†</sup>	23.5	23.9
Non-performing Loans to Total Loans	11.00	11.40	11.00	10.20
Non-performing Loans (percentage change)	1.0	9.7	-1.3	1.3
Returns on Assets	0.20	-0.1	0.10	0.20
Returns on Equity (ROE)	1.20	-0.7	0.30	1.10
Liquidity Ratio****	44.30	42.70	40.60	42.00

\*US\$ converted to L\$

\*\*Other Deposits Include Official and Manager Checks

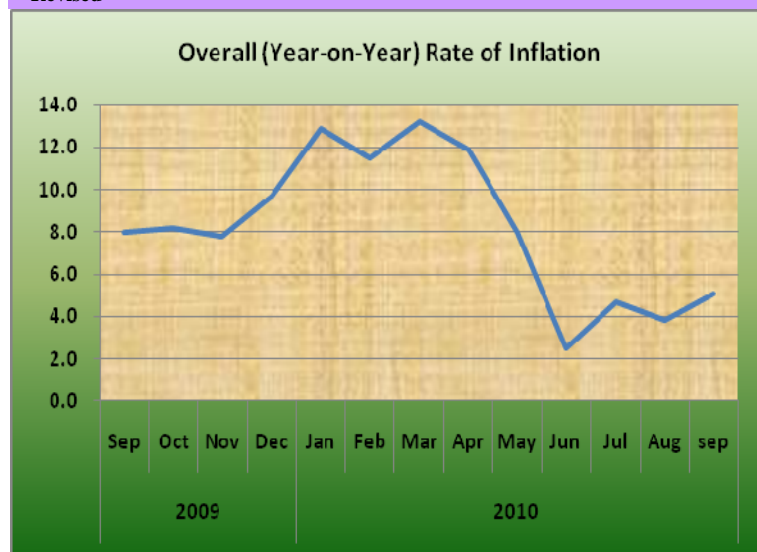
\*\*\*The Minimum Capital Adequacy Ratio is 10%

\*\*\*\*The Required Minimum Liquidity Ratio is 15%

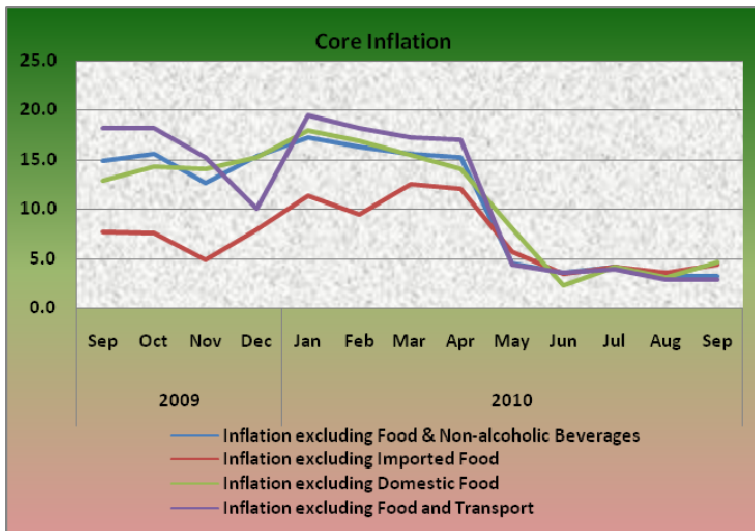
1

	Jun.10	Jul.10	Aug.10	Sep.10
<b>5a External Trade</b>	<i>(Millions of US\$)</i>			
Exports	12.1	25.2 <sup>†</sup>	19.7 <sup>†</sup>	19.6
- O/w Rubber	8.8	15.4	13.0 <sup>†</sup>	16.3
Imports	90.1	65.2	75.5	64.9
- O/w Rice				
Commercial	0.1	10.1	9.2	5.9
Non-commercial	-	0.5	1.0	0.3
- Petroleum Products	23.8	6.2	12.7	0.8
Trade Balance	-54.2	-40.0 <sup>†</sup>	-55.8 <sup>†</sup>	-45.2
<b>5b External Trade</b>	<i>(Metric Tons)</i>			
- Rubber	4,334.4	6,047.7	4,471.3 <sup>†</sup>	6,609.4
- Rice Imports O/w				
Commercial	98.0	21,277.3 <sup>†</sup>	19,425.0	12,158.3
Non-commercial	-	25,799.4 <sup>†</sup>	1,619.9	50.0
- Petroleum Products	28,422	8,434	17,658	1,800
	<i>(In percent)</i>			
<b>6 Overall (Year-on-year) Rate of Inflation</b>	2.5	4.7	3.8	5.1
a. Food and Non-alcoholic Beverages Inflation	1.4	4.2	3.5	7.1
- Domestic Food Inflation	3.1	4.1	4.2	6.5
- Imported Food Inflation	-0.1	4.4	2.9	7.7
b. Transport Inflation	3.2	5.2 <sup>†</sup>	5.2	5.2
c. Imported Fuels Inflation	24.0	9.7	9.7	8.8
<b>Core Inflation</b>	<i>(In percent)</i>			
Inflation excluding Food & Non-alcoholic Beverages	3.5	4.1	3.2	3.2
Inflation excluding Imported Food	3.4	4.1	3.5	4.3
Inflation excluding Domestic Food	2.3	4.2	3.1	4.7
Inflation excluding Food and Transport	3.6	4.0	2.9	2.9

<sup>†</sup>Revised



2



# CENTRAL BANK OF LIBERIA



## Fact Sheet on Key Economic and Financial Indicators September, 2010



CENTRAL BANK OF LIBERIA

Corner of Warren and Carey Streets  
P. O. Box 2048, Monrovia  
Tel: 231-5-960557/5-960556  
Fax:(231) 770-59642  
Website: [www.cbl.org.lr](http://www.cbl.org.lr)