

	Dec.09	Jan.10	Feb.10	Mar.10
<b>1 Monetary</b>	<i>(Millions of US\$)</i>			
CBL Net Foreign Exchange Reserves Position (Including SDRs)	268.9 <sup>†</sup>	272.8	272.3	268.5
	<i>(Millions of L\$)</i>			
Liberian Dollars in Circulation	4,583.4	4,460.0	4,461.6	4,389.4
Money Supply (M1) in L\$ only	5,030.1	4,774.2	4,862.6	4,824.2
Broad money (M2) in L\$ only	6,400.3	6,246.6	6,369.0	6,340.2
Broad money (M2) in both L\$ and US\$*	24,235.3	24,407.7	24,360.4	23,402.4
	<i>(In percent)</i>			
Liberian Dollar share of Broad Money	26.4	25.6	26.1	27.1
Interest Rates				
- Lending rate	14.1	14.1	14.2	14.2
-Average Deposit rates				
-Savings	2.0	2.0	2.0	2.0
-Time	4.3	4.3	4.2	3.9
	<i>(Millions of L\$)</i>			
Commercial banks loans to private sector - US\$	124.6	128.5	132.4	132.00
Commercial banks loans to private sector - L\$	708.9	701.4	735.4	749.4
- Demand Deposits of commercial banks				
Demand deposits - US\$	188.9	186.5	182.4	176.7
Demand deposits - L\$	868.3	1,036.2	1,071.8	1,062.5
- Time & Savings Deposits of commercial banks				
Time & savings deposits - US\$	64.0	65.8	65.8	62.0
Time & savings deposits - L\$	4,514.2	4,736.1	4,769.6	4,430.6
Remittances	<i>(Millions of US\$)</i>			
Inflows	71.3	76.4	72.6	85.8
Outflows	72.3	52.4	97.5	81.9
Netflows	-1.0	24.1	-24.91	3.84
<b>2 CBL's Foreign Exchange Auction</b>	4.2	5.1	3.70	8.90
<b>3 Exchange Rate</b>	<i>L\$ per US\$</i>			
End of Period	70.50	72.00	72.50	71.50
Period Average	67.81	71.33	71.78	71.59
<b>4 Financial Soundness Indicators (FSI)</b>	<i>(In percent)</i>			
Capital adequacy ratio (CAR)**	28.1	24.5	27.3	27.5
Non-performing Loans to Total Loans	10.90	10.50	11.50	11.00
Non-performing Loans (percentage change)	-14.6	-0.7	14.3	-5.8
Returns on Assets	0.65	-0.06	0.14 <sup>†</sup>	0.20
Returns on Equity (ROE)	3.44	-0.32	0.8 <sup>†</sup>	0.80
Liquidity Ratio***	42.50	43.40	43.90	45.00

\*US\$ converted to L\$

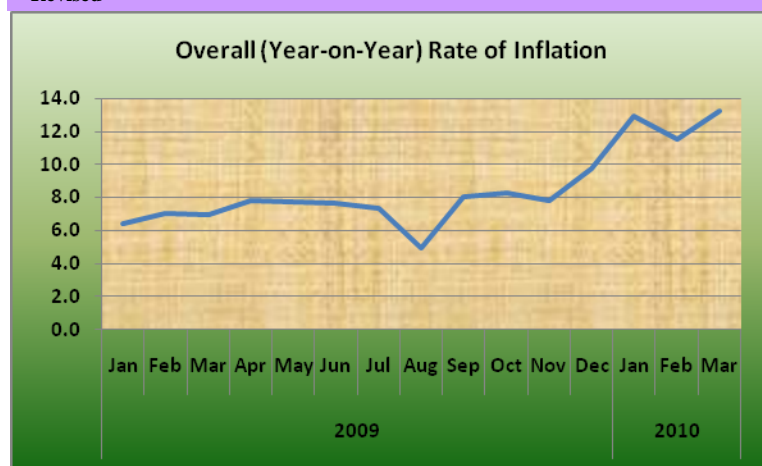
\*\*The Minimum Capital Adequacy Ratio is 10%

\*\*\*The Required Minimum Liquidity Ratio is 15%

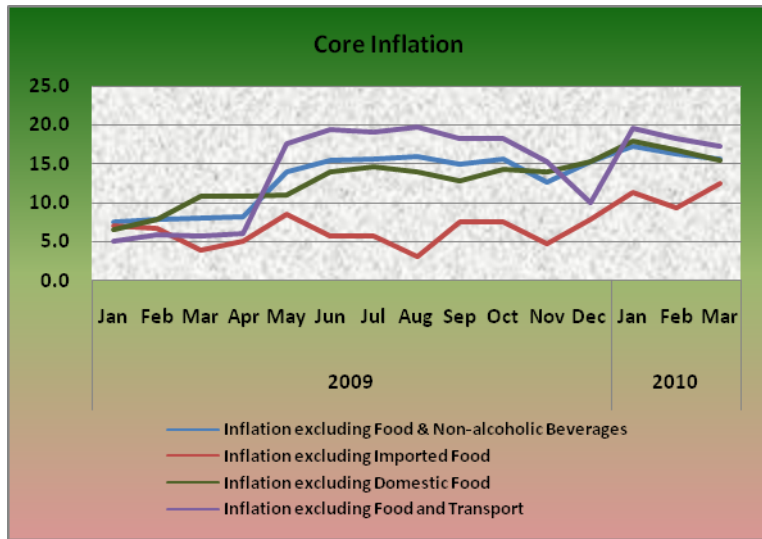
1

	Dec.09	Jan.10	Feb.10	Mar.10
<b>5a External Trade</b>	<i>(Millions of US\$)</i>			
Exports	17.6	19.3	13.5 <sup>†</sup>	9.0
- O/w Rubber	12.2	14.4	10.7	5.2
Imports	31.2	33.9	25.4	48.3
- O/w Rice				
Commercial	5.0	11.0	1.9	5.1
Non-commercial	0.0	1.3	0.5	0.5
- Petroleum Products	11.2	7.6	1.2	17.4
Trade Balance	-13.6	-14.6	-14.0	-39.3
<b>5b External Trade</b>	<i>(Metric Tons)</i>			
- Rubber	5,720.1	6,387.4	4,019.6	3,053.4
- Rice Imports O/w				
Commercial	2,219.0	2,461.8	4,054.0	11,000.0
Non-commercial	0.0	1,857.9	911.5	910.5
- Petroleum Products	16,150.5	9,995	1,500	24,747
	<i>(In percent)</i>			
<b>6 Overall (Year-on-year) Rate of Inflation</b>	9.7	12.9	11.5	13.2
a. Food and Non-alcoholic Beverages Inflation	4.2	9.4	6.7	11.0
- Domestic Food Inflation	-5.7	0.5	-3.7	6.4
- Imported Food Inflation	14.9	19.3	17.9	15.3
b. Transport Inflation	1.6	3.4	4.3	4.0
c. Imported Fuels Inflation	10.4	23.3	32.3	32.2
<b>Core Inflation</b>	<i>(In percent)</i>			
Inflation excluding Food & Non-alcoholic Beverages	15.3	17.2	16.3	15.5
Inflation excluding Imported Food	7.9	11.3	9.4	12.5
Inflation excluding Domestic Food	15.2	17.9	16.8	15.4
Inflation excluding Food and Transport	10.1	19.5	18.2	17.3

<sup>†</sup>Revised



2



# CENTRAL BANK OF LIBERIA



## Fact Sheet on Key Economic and Financial Indicators

**March, 2010**

Corner of Warren and Carey Streets  
 P. O. Box 2048, Monrovia  
 Tel: 231-5-960557/5-960556  
 Fax: (231) 770-59642  
 Website: [www.cbl.org.lr](http://www.cbl.org.lr)



**CENTRAL BANK OF LIBERIA**