

	Jun.13	Jul.13	Aug.13	Sep.13
1 Monetary	<i>(Millions of US\$)</i>			
CBL Net Foreign Exchange Reserves Position (Including SDRs)	284.6 ¹	275.9 ¹	278.5	279.6
	<i>(Millions of L\$)</i>			
Liberian Dollars in Circulation	8,147.2	8,244.0	8,524.6	8,513.8
Money Supply (M1) in L\$ only	8,824.6	9,074.4	9,355.0	9,636.6
Broad money (M2) in L\$ only	12,633.9 ¹	12,934.5 ¹	13,081.9	14,080.1
Broad money (M2) in both L\$ and US\$*	48,085.5	49,396.3	50,053.6	49,285.0
	<i>(In percent)</i>			
Liberian Dollar share of Broad Money	26.3	26.2	26.1	28.6
Interest Rates				
- Lending rate	13.6	13.5	13.2	13.5
-Average Deposit rates				
-Savings	2.0	2.0	2.0	2.0
-Time	2.0	3.0 ¹	3.0	3.0
	<i>(Millions of \$)</i>			
Commercial banks loans to private sector - US\$	298.90	308.7 ¹	311.30	310.80
Commercial banks loans to private sector - L\$	896.6	1,131.2	1,065.7	1,251.3
- Demand Deposits of commercial banks				
Demand deposits - US\$	317.6	324.7	322.2	300.1
Demand deposits - L\$	2,349.9	2,662.9	2,662.9	3,077.7
- Time & Savings Deposits of commercial banks				
Time & savings deposits - US\$	145.1	143.9	142.3	139.4
Time & savings deposits - L\$	3,799.6	3,851.3	3,718.5	4,434.9
- Other Deposits**				
Actual US\$ component of other deposits	0.7	1.8	0.5	0.6
Liberian \$ component of savings deposits	9.7	8.8	8.4	8.6
Remittances	<i>75.6</i>			
Inflows	80.6	75.6	57.6	72.8
Outflows	151.9	108.5	49.6	125.3
Netflows	-71.28 ¹	-32.82 ¹	7.98	-52.51
2 CBL's Foreign Exchange Auction	8.0	7.8	3.3	3.0
3 Exchange Rate				
End of Period	76.50	77.50	79.50	80.00
Period Average	76.54	77.06	78.61	79.64
4 Financial Soundness Indicators (FSI)	<i>(In percent)</i>			
Capital adequacy ratio (CAR)***	25.0	24.6	21.1 ¹	23.4
Non-performing Loans to Total Loans	18.8	19.3 ¹	18.9 ¹	19.1
Non-performing Loans (percentage change)	7.3	12.4 ¹	-3.1 ¹	1.5
Returns on Assets	-0.71	-1.23	-0.72	-1.00
Returns on Equity (ROE)	-5.3	-9.6	-5.43 ¹	-7.49
Liquidity Ratio****	40.2	37.8	36.5	32.1

*US\$ converted to L\$

**Other Deposits Include Official and Manager Checks

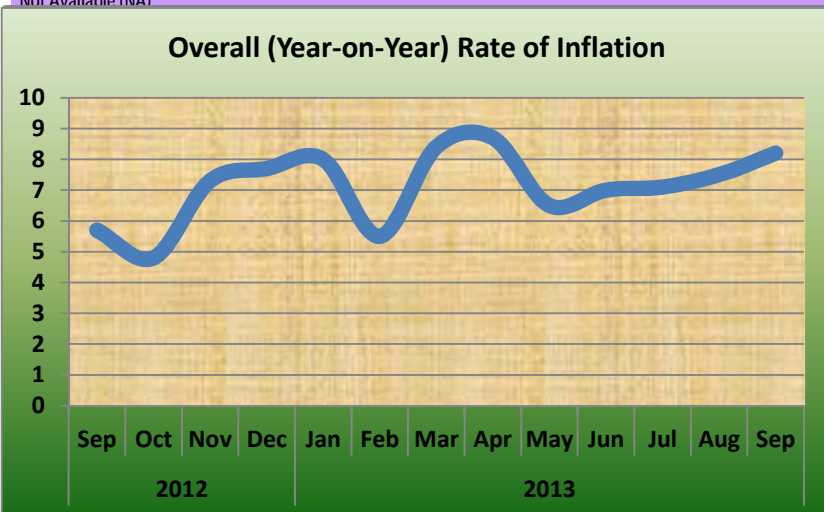
***The Minimum Capital Adequacy Ratio is 10%

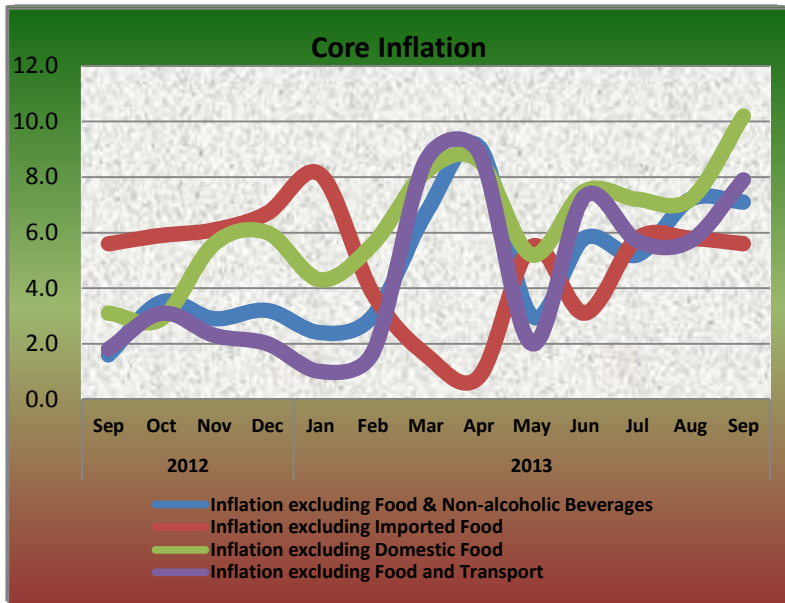
****The Required Minimum Liquidity Ratio is 15%

	Jun.13	Jul.13	Aug.13	Sep.13
5a External Trade (Value)	<i>(Millions of US\$)</i>			
Exports	42.3 [*]	39.1	42.1	47.6
- O/w Rubber	12.2	0.0	18.2	12.3
Imports	106.1	112.0	97.5	99.0
- O/w Rice				
Commercial	17.0	4.9	11.0	6.5
Non-commercial	0.0	0.0	0.0	0.0
- Petroleum Products	23.4	28.0	15.1	22.4
Trade Balance	-63.8	-72.9	-55.4	-51.3
5b External Trade (Volume)	<i>(Metric Tons)</i>			
- Rubber	6,098.4	-	7,656.0	5,889.0
- Rice Imports O/w				
Commercial	31,868.6	7,860.6	16,099.3	12,034.2
Non-commercial	0.0	0.0	0.0	0.0
- Petroleum Products	22,949.0	27,109.6	15,669.0	19,724.2
	<i>(In percent)</i>			
6 Overall (Year-on-year) Rate of Inflation	7.0	7.1	7.5	8.2
a. Food and Non-alcoholic Beverages Inflation	11.1	8.8	8.1	9.1
- Domestic Food Inflation	10.5	6.8	1.4	2.9
- Imported Food Inflation	11.7	10.8	15.7	15.9
b. Transport Inflation	0.3	2.3	2.4	2.8
c. Imported Fuels Inflation	-6.0	0.9	1.3	2.6
Core Inflation				
Inflation excluding Food & Non-alcoholic Beverages	2.7	5.2	7.2	7.1
Inflation excluding Imported Food	5.4	5.8	5.8	5.6
Inflation excluding Domestic Food	5.8	7.2	7.2	10.2
Inflation excluding Food and Transport	3.1	5.7	5.7	7.9

¹Revised

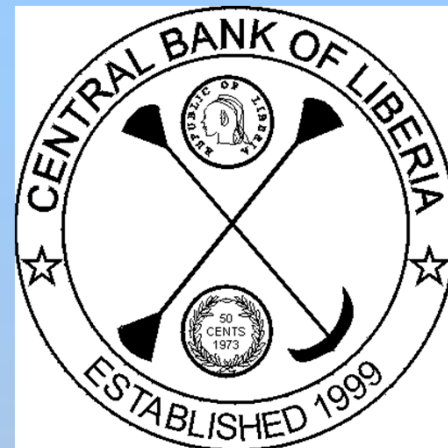
^{*}Not Available (NA)





CENTRAL BANK OF LIBERIA

CENTRAL BANK OF LIBERIA



Fact Sheet on Key Economic and Financial Indicators September, 2013

Corner of Warren and Carey Streets
 P. O. Box 2048, Monrovia
 Tel: 231-5-960557/5-960556
 Fax: (231) 770-59642
 Website: www.cbl.org.lr