

	Apr.10	May.10	Jun.10	Jul.10
1 Monetary	<i>(Millions of US\$)</i>			
CBL Net Foreign Exchange Reserves Position (Including SDRs)	264.9	268.8	270.7	267.7
	<i>(Millions of L\$)</i>			
Liberian Dollars in Circulation	4,269.0	4,248.8	4,413.1	4,554.5
Money Supply (M1) in L\$ only	4,422.1	4,617.2	4,612.3	4,729.1
Broad money (M2) in L\$ only	6,147.5	6,316.8	6,347.6	6,531.5
Broad money (M2) in both L\$ and US\$*	17,077.3	16,759.9	25,279.5	25,843.9
	<i>(In percent)</i>			
Liberian Dollar share of Broad Money	36.0	37.7	25.1	25.3
Interest Rates				
- Lending rate	14.2	14.6	14.2	14.3
-Average Deposit rates				
-Savings	2.0	2.0	2.2	2.2
-Time	4.0	4.0	4.2	4.1
	<i>(Millions of L\$)</i>			
Commercial banks loans to private sector - US\$	128.90	131.70	132.70	140.40
Commercial banks loans to private sector - L\$	735.7	714.0	696.8	735.2
- Demand Deposits of commercial banks				
Demand deposits - US\$	83.7	75.6	190.6	194.6
Demand deposits - L\$	891.1	1,072.7	1,043.6	897.7
- Time & Savings Deposits of commercial banks				
Time & savings deposits - US\$	67.9	69.4	70.6	71.0
Time & savings deposits - L\$	1,718.6	1,693.3	1,724.8	1,791.6
- Other Deposits**				
Actual US\$ component of other deposits	1.3	1.1	0.9	0.8
Liberian \$ component of savings deposits	6.7	6.3	10.5	10.8
Remittances	<i>(Millions of US\$)</i>			
Inflows	78.8	76.9	69.2	72.1
Outflows	76.4	85.6	86.6	92.8
Netflows	2.4	-8.7	-17.4	-20.7
2 CBL's Foreign Exchange Auction	5.9	1.5	3.0	2.5
3 Exchange Rate	<i>L\$ per US\$</i>			
End of Period	71.50	71.50	72.25	72.50
Period Average	71.79	70.08	71.67	72.29
4 Financial Soundness Indicators (FSI)	<i>(In percent)</i>			
Capital adequacy ratio (CAR)***	27.8	26.2	25.7	24.7
Non-performing Loans to Total Loans	10.60	11.10	11.00	11.40
Non-performing Loans (percentage change)	-4.5	4.9	1.0	9.7
Returns on Assets	0.10	0.10	0.20	-0.1
Returns on Equity (ROE)	0.40	0.80	1.20	0.7
Liquidity Ratio****	45.10	44.30	44.30	42.70

*US\$ converted to L\$

**Other Deposits Include Official and Manager Checks

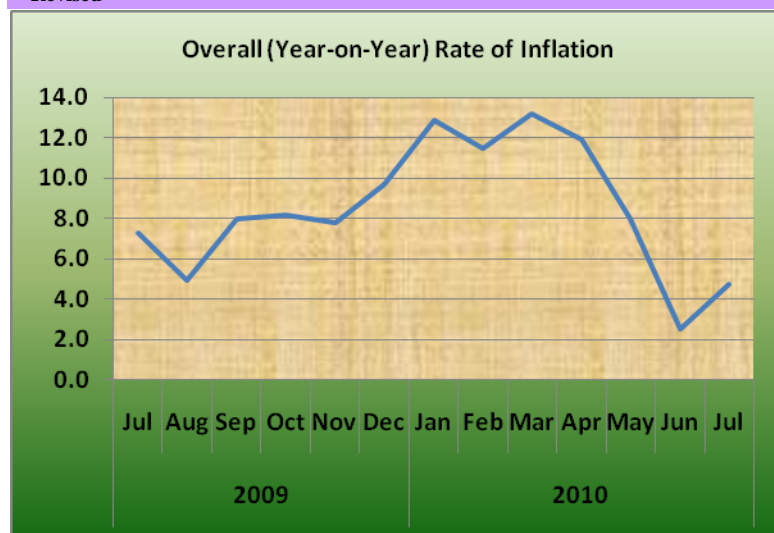
***The Minimum Capital Adequacy Ratio is 10%

****The Required Minimum Liquidity Ratio is 15%

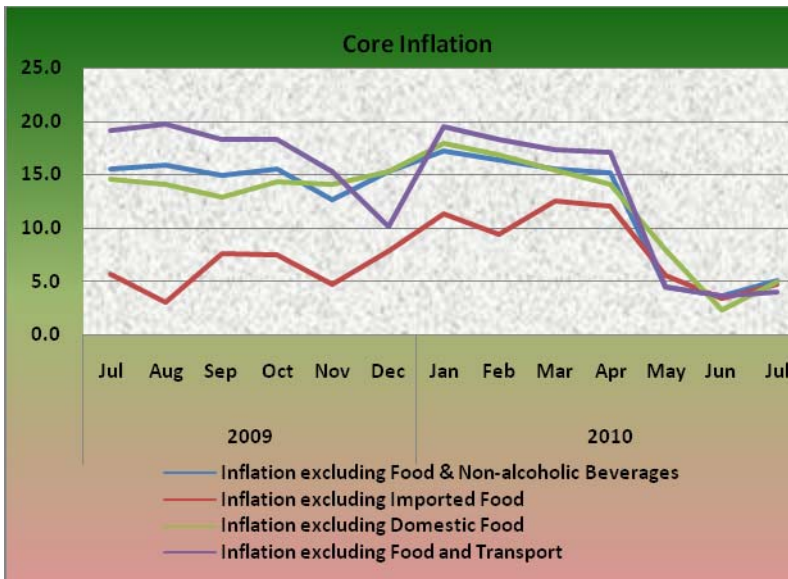
1

	Apr.10	May.10	Jun.10	Jul.10
5a External Trade	<i>(Millions of US\$)</i>			
Exports	16.9 [†]	32.1 [†]	12.1	23.8
- O/w Rubber	4.2	28.6 [†]	8.8	15.4
Imports	71 [†]	80.0	90.1 [†]	65.2
- O/w Rice				
Commercial	4.3 [†]	3.1	0.1	10.1
Non-commercial	0.4	1.2	-	0.5
- Petroleum Products	30.9	16.6	23.8 [†]	6.2
Trade Balance	-64.5 [†]	-49.1	-54.2	-41.4
5b External Trade	<i>(Metric Tons)</i>			
- Rubber	2,390.6	9429.1 [†]	4,334.4	6,047.7
- Rice Imports O/w				
Commercial	13,914.0	7,020.0	98.0	46,277.3
Non-commercial	375.8	2,002.3	-	799.4
- Petroleum Products	41,224	18,200	28,422	8,434
	<i>(In percent)</i>			
6 Overall (Year-on-year) Rate of Inflation	11.9	8.0	2.5	4.7
a. Food and Non-alcoholic Beverages Inflation	8.7	12.0	1.4	4.2
- Domestic Food Inflation	5.5	8.2	3.1	4.1
- Imported Food Inflation	11.6	15.6	-0.1	4.4
b. Transport Inflation	4.1	4.6	3.2	12.8
c. Imported Fuels Inflation	33.0	35.0	24.0	9.7
Core Inflation	<i>(In percent)</i>			
Inflation excluding Food & Non-alcoholic Beverages	15.2	4.5	3.5	5.1
Inflation excluding Imported Food	12.0	5.6	3.4	4.8
Inflation excluding Domestic Food	14.0	8.0	2.3	4.9
Inflation excluding Food and Transport	16.9	4.4	3.6	4.0

[†]Revised



2



CENTRAL BANK OF LIBERIA



Fact Sheet on Key Economic and Financial Indicators

July, 2010



CENTRAL BANK OF LIBERIA

Corner of Warren and Carey Streets
 P. O. Box 2048, Monrovia
 Tel: 231-5-960557/5-960556
 Fax:(231) 770-59642
 Website: www.cbl.org.lr