

	Mar.12	Apr.12	May.12	June.12
1 Monetary	<i>(Millions of US\$)</i>			
CBL Net Foreign Exchange Reserves Position (Including SDRs)	335.9	337.7	339.7	341.4 ^{1b}
	<i>(Millions of L\$)</i>			
Liberian Dollars in Circulation	7,339.6	7,354.7	7,296.7	7333.2 ^{1b}
Money Supply (M1) in L\$ only	7,725.9	7,493.5	7,611.6	7731.7 ^{1b}
Broad money (M2) in L\$ only	11,164.8	10,558.3	10,828.1	11104.7 ^{1b}
Broad money (M2) in both L\$ and US\$*	37,624.3	40,043.5	42,562.5	45239.4 ^{1b}
	<i>(Millions of L\$)</i>			
Liberian Dollar share of Broad Money	29.7	26.4	25.4	25.5 ^{1b}
Interest Rates				
- Lending rate	13.3	13.9	12.9	13.4
-Average Deposit rates				
-Savings	2.0	2.0	2.0	2.0
-Time	3.8 [†]	4.1 [†]	3.7	3.8
	<i>(Millions of L\$)</i>			
Commercial banks loans to private sector - US\$	216.80	234.20	239.00	221.90
Commercial banks loans to private sector - L\$	667.1	696.5	683.1	671.4
- Demand Deposits of commercial banks				
Demand deposits - US\$	241.1	276.2	297.8	321 ^{1b}
Demand deposits - L\$	1,631.6	1,584.7	1,590.5	1596.3 ^{1b}
- Time & Savings Deposits of commercial banks				
Time & savings deposits - US\$	112.3	118.6	115.5	116.1 ^{1c}
Time & savings deposits - L\$	3,432.4	3,058.6	3,059.6	3060.6 ^{1b}
- Other Deposits**				
Actual US\$ component of other deposits	4.1	3.6	3.6	3.8
Liberian \$ component of savings deposits	6.5	6.2	6.2	6.8
Remittances	<i>(Millions of US\$)</i>			
Inflows	105.7	90.0	135.0	113.0
Outflows	96.4	107.6	142.0	132.0
Netflows	9.32	-17.58	-6.00	-19.00
2 CBL's Foreign Exchange Auction	2.0	3.8	9.4	11.0
3 Exchange Rate	<i>L\$ per US\$</i>			
End of Period	74.00	74.00	76.00	74.50
Period Average	73.61	74.00	74.89	75.54
4 Financial Soundness Indicators (FSI)	<i>(In percent)</i>			
Capital adequacy ratio (CAR)***	24.90	22.10	22.70	21.00
Non-performing Loans to Total Loans	23.6	24.4	24.4	19.6
Non-performing Loans (percentage change)	2.20	3.45 [†]	4.77	-21.4
Returns on Assets	0.14 [†]	-1.07	-0.69	0.18
Returns on Equity (ROE)	1.00	-7.9	-5.12	1.37
Liquidity Ratio****	45.60	43.40	44.70	47.40

*US\$ converted to L\$

**Other Deposits Include Official and Manager Checks

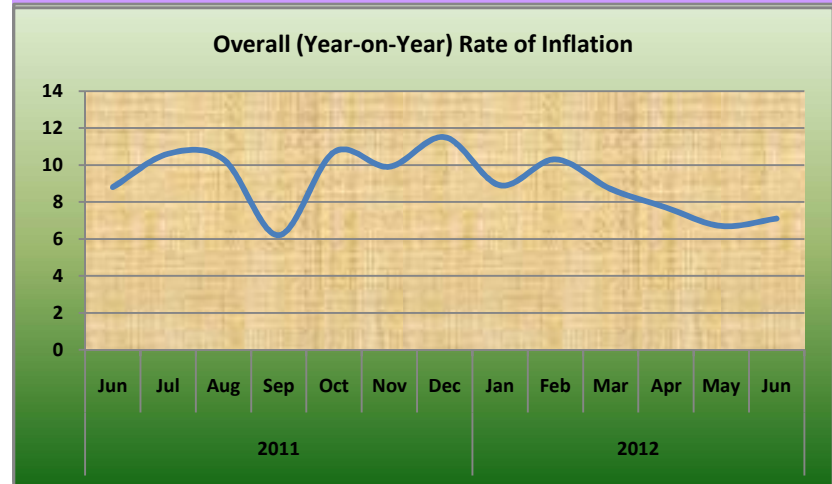
***The Minimum Capital Adequacy Ratio is 10%

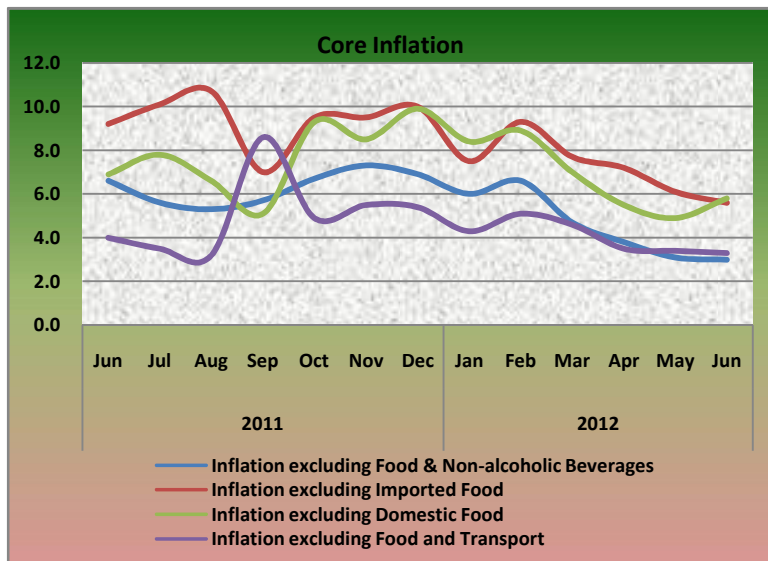
****The Required Minimum Liquidity Ratio is 15%

	Mar.12	Apr.12	May.12	June.12
5a External Trade	<i>(Millions of US\$)</i>			
Exports	83.5	31.4	21.7	44.8
- O/w Rubber	35.2	0.5	1.4	38.0
Imports	70.7 [†]	87.6	108.6	119.4
- O/w Rice				
Commercial	5.2 [†]	2.4	9.0	0.3
Non-commercial	0.0	0.0	0.0	0.0
- Petroleum Products	15.2 [†]	24.5	33.8	33.7
Trade Balance	12.8 [†]	-56.2	-86.9	-74.6
5b External Trade	<i>(Metric Tons)</i>			
- Rubber	12,125 [†]	343.5	947.2	12,889.0
- Rice Imports O/w				
Commercial	7,134.8 [†]	3,568.0	16,030.9	558.5
Non-commercial	0.0 [†]	0.0	0.0	0.0
- Petroleum Products	24,909 [†]	22,266	29,102	32,039.0
	<i>(In percent)</i>			
6 Overall (Year-on-year) Rate of Inflation	8.7	7.7	6.7	7.1
a. Food and Non-alcoholic Beverages Inflation	12.8	11.7	10.4	11.2
- Domestic Food Inflation	14.1	14.7	12.3	11.0
- Imported Food Inflation	11.5	9.0	8.5	11.4
b. Transport Inflation	5.1	5.1	1.4	1.2
c. Imported Fuels Inflation	17.8	11.7	9.6	7.5
Core Inflation	<i>(In percent)</i>			
Inflation excluding Food & Non-alcoholic Beverages	4.7	3.8	3.1	3.0
Inflation excluding Imported Food	7.7	7.2	6.1	5.6
Inflation excluding Domestic Food	7.0	5.5	4.9	5.8
Inflation excluding Food and Transport	4.6	3.5	3.4	3.3

[†]Revised

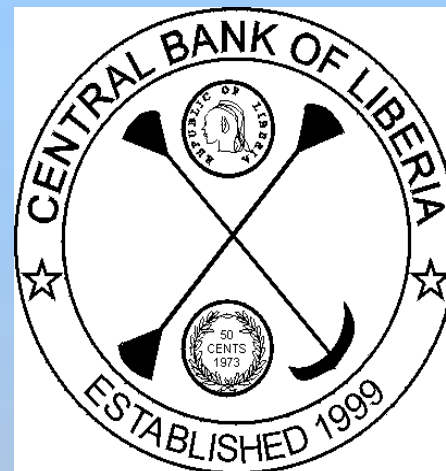
^{1b}Estimates





CENTRAL BANK OF LIBERIA

CENTRAL BANK OF LIBERIA



Fact Sheet on Key Economic and Financial Indicators

June, 2012

Corner of Warren and Carey Streets
 P. O. Box 2048, Monrovia
 Tel: 231-5-960557/5-960556
 Fax: (231) 770-59642
 Website: www.cbl.org.lr