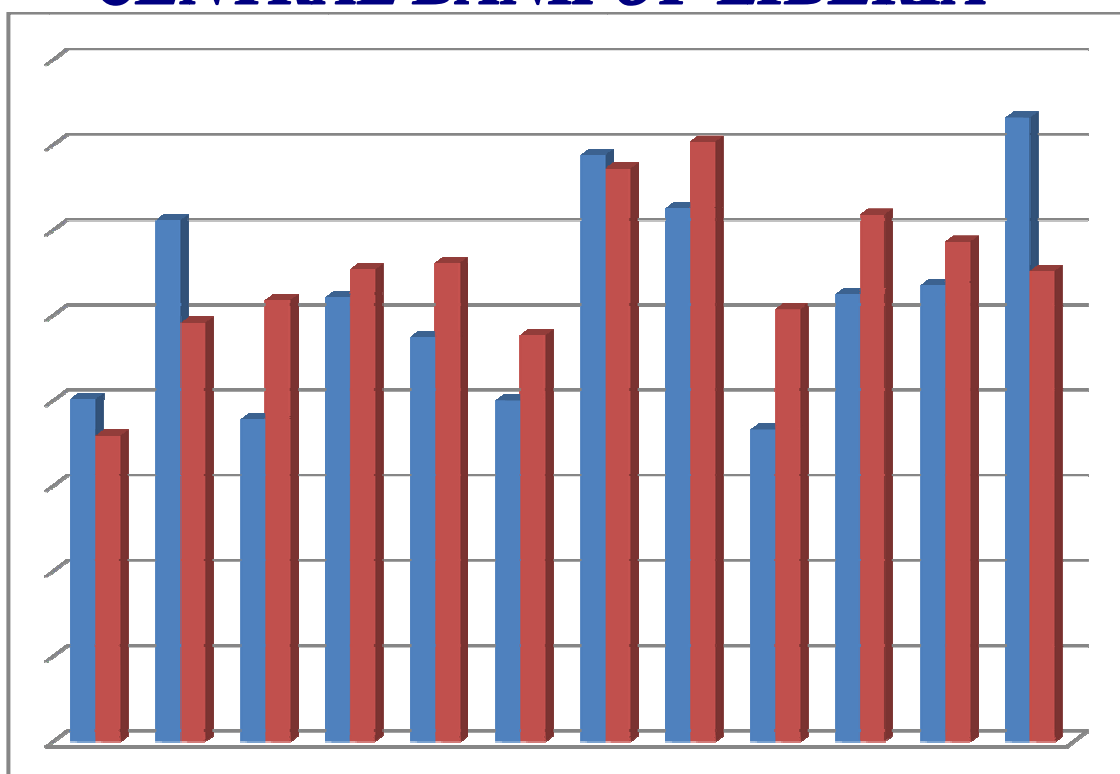




CENTRAL BANK OF LIBERIA



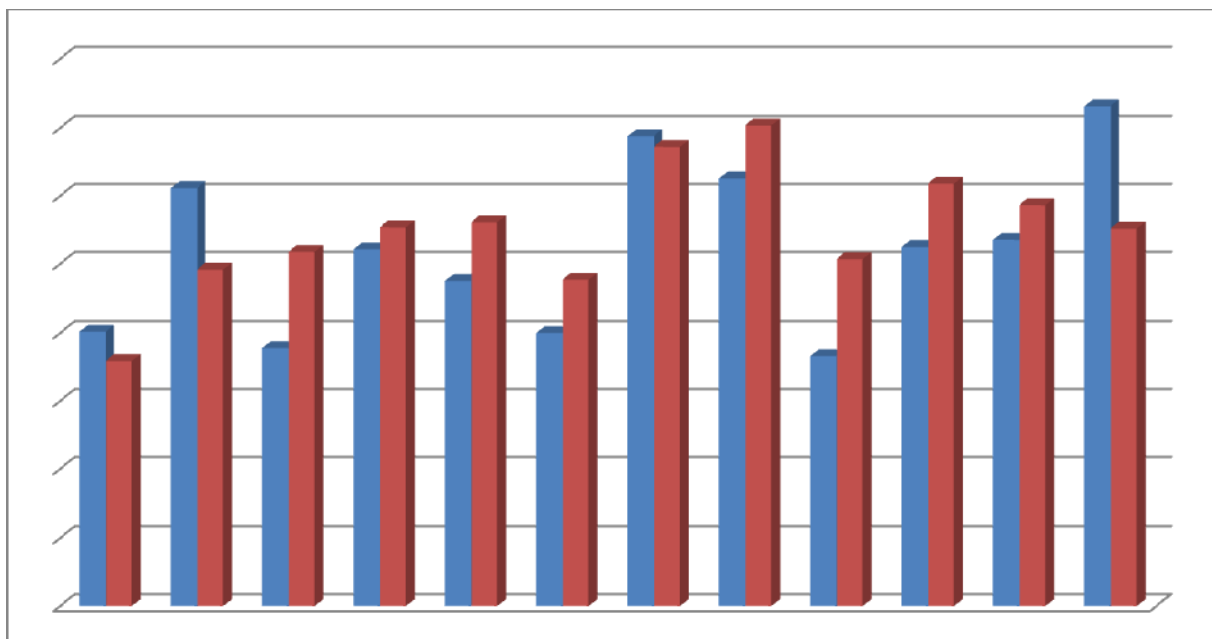
Liberia Financial STATISTICS

**Vol. 13, No.5
Sept-Oct, 2011**

Research, Policy and Planning Department
Monrovia, Liberia



CENTRAL BANK OF LIBERIA



Liberia Financial STATISTICS

THE LIBERIA FINANCIAL STATISTICS (LFS) is produced by the Bank's Research, Policy and Planning Department. Inquiries concerning this publication should be addressed to:

The Director
Research, Policy and Planning Department
Central Bank of Liberia
Warren and Carey Streets
P. O. Box 2048
Monrovia, Liberia

Telephone #: 00(231/6516418/6449833/6516006
Fax #: 00(231) 077059642
Swift :CBLRRLM

Table of Contents

<i>INTRODUCTION</i>		-ii-
<i>Statistics</i>		<i>I - 65</i>
1	<i>MONEY AND BANKING</i>	<i>I – 37</i>
1.1a	Depository Corporations Survey – 2009.....	1-2
1.1b	Depository Corporations Survey –2010.....	3-4
1.1c	Depository Corporations Survey –2011.....	5-6
1.2a	Sectoral Balance Sheet of Other Depository Corp. –2009.....	7-8
1.2b	Sectoral Balance Sheet of Other Depository Corp. –2010.....	9-10
1.2c	Sectoral Balance Sheet of Other Depository Corp. –2011.....	11-12
1.3a	Sectoral Balance Sheet of Central Bank of Liberia – 2009.....	13-14
1.3b	Sectoral Balance Sheet of Central Bank of Liberia – 2010.....	15-16
1.3c	Sectoral Balance Sheet of Central Bank of Liberia –2011.....	17-18
1.4a	Commercial Banks’ Loans by Economic Sectors – 2009.....	19-20
1.4b	Commercial Banks’ Loans by Economic Sectors – 2010.....	21-22
1.4c	Commercial Banks’ Loans by Economic Sectors – 2011.....	23-24
1.5a	Commercial Banks’ Interest Rate – 2009.....	25
1.5b	Commercial Banks’ Interest Rate – 2010-2011.....	26
1.6a	Liberian Dollar Exchange Rates – Period Averages – 2009-2010.....	27
1.6b	Liberian Dollar Exchange Rates – Period Averages – 11.....	28
1.7	Liberian Dollar Exchange Rates –End of Period – 2009-2011.....	29
1.8	Liberian Dollar Exchange Rates – Sep-Oct ,2011.....	30
1.9	Commercial Banks’ Inflows and Outflows – 2009-2011.....	31
1.10a	Central Bank of Liberia FX Auction – 2009.....	32-33
1.10b	Central Bank of Liberia FX Auction – 2010.....	34-35
1.10c	Central Bank of Liberia FX Auction – 2011.....	36-37
2	<i>REAL SECTOR</i>	<i>38-57</i>
2.1a	Harmonized Consumer Price Index – 2009.....	38
2.1b	Harmonized Consumer Price Index – 2010.....	39
2.1c	Harmonized Consumer Price Index – 2011.....	40-41
2.2a	HCPI Inflation Rates – 2009.....	42
2.2b	HCPI Inflation Rates – 2010.....	43
2.2c	HCPI Inflation Rates – 2011.....	44-45
2.3a	Key Output Volume – 2009.....	46-47
2.3b	Key Output Volume – 2010.....	48-49
2.3c	Key Output Volume –2011.....	50-51
2.4a	Key Output Value – 2009.....	52-53
2.4b	Key Output Value – 2010-2011.....	54-55
2.4c	Key Output Value –2011.....	56-57
3	<i>GOVERNMENT FINANCE</i>	<i>58-59</i>
3.1	Government Revenue – 2009-2011.....	58
3.2	Government Expenditure – 2009-2011.....	58
3.3	Functional Classification of Government Expenditure – 2009-2011.....	59
3.4	Summary Estimates of Liberia’s Public Debt Stock and Status as at April 30, 2011.....	59
4	<i>EXTERNAL TRADE</i>	<i>60-65</i>
4.1	Exports and Imports – 2009-2011.....	60
4.2a	Commodity Composition of Exports – 2009.....	60
4.2b	Commodity Composition of Exports – 2010-2011.....	61
4.3a	Commodity Composition of Imports – 2009.....	62
4.3b	Commodity Composition of Imports – 2010.....	63
4.3c	Commodity Composition of Imports – 2010.....	64
4.4a	Volume of Imports of Petroleum Products – 2009.....	65
4.4b	Volume of Imports of Petroleum Products – 2010-2011.....	65

Introduction

The Liberia Financial Statistics (LFS) is updated and published after every two (2) months for use by researchers, academicians, investors, policy-makers, and the general public who are fascinated in Liberia's macroeconomic data. The LFS, along with other Central Bank of Liberia's (CBL) publications, has received numerous acclaims for the quality of data reported.

The fifth edition of the LFS for 2011 covers statistics on four (4) sectors of the Liberian economy, namely, the monetary, real, fiscal, and external trade, which contains data from January, 2009 to October, 2011. The cover page of this edition depicts monthly remittance inflows and outflows for the period November, 2010 to October, 2011.

The Management of the CBL remains highly grateful to its many data providers for the continual excellent working relationship that has translated into the timely preparation of this document and other publications.

MONEY AND BANKING

CENTRAL BANK OF LIBERIA

1.1b: Depository Corporations Survey-2009

Millions of Liberian Dollars

	Jan-09	Feb-09	Mar-09	Apr-09	May-09	Jun-09
Foreign Assets (net)	(42,273.0)	(40,607.7)	(42,250.6)	(42,482.9)	(47,736.6)	(46,699.3)
Foreign Assets (MA)	11,102.1	10,613.3	11,133.0	11,130.5	12,893.5	13,673.8
(-) Foreign Liabilities (MA)	58,346.4	56,859.4	58,819.5	59,899.0	66,377.2	66,554.9
Foreign Assets (CoB)	5,525.4	6,405.0	6,188.7	6,977.3	6,570.1	7,008.7
(-) Foreign Liabilities (CoB)	554.1	766.6	752.9	691.8	822.9	826.8
Domestic Credit	74,261.1	73,184.6	74,827.9	76,809.2	83,851.1	83,455.8
Claims on General Government (net)	67,363.0	65,978.6	67,661.4	69,228.0	75,327.9	74,663.2
Claims on General Government (MA)	69,957.0	68,605.1	70,403.8	71,564.3	77,736.1	77,896.1
(-) General Government Deposits (MA)	3,102.0	3,135.4	3,256.2	2,848.1	2,934.5	3,622.5
Claims on General Government (CoB)	594.4	594.4	603.6	596.2	632.1	525.2
(-) General Government Deposits (CoB)	86.5	85.5	89.8	84.5	105.7	135.6
Claims on Public Corporations (MA)	0.0	0.0	0.0	0.0	0.0	0.0
Claims on Public Corporations (CoB)	407.1	509.9	579.1	724.9	760.7	852.5
Claims on Private Sector (MA)	106.9	349.9	191.6	196.5	208.3	207.4
Claims on Private Sector (CoB)	6,382.3	6,345.4	6,395.1	6,659.1	7,553.4	7,731.9
Claims on NBFIs (MA)	0.0	0.0	0.0	0.0	0.0	0.0
Claims on NBFIs (CoB)	1.7	0.8	0.7	0.7	0.8	0.8
Money	16,993.1	17,493.4	17,539.6	18,757.7	20,032.8	19,921.7
Currency Outside Banks (MA)	3,165.2	3,159.7	3,210.5	3,142.0	3,176.4	3,249.6
Liberian Currency in Circulation (MA)	4,025.4	3,966.7	3,896.4	3,843.2	3,823.7	3,800.9
(-) Currency Holdings (CoB)	860.3	806.9	686.0	701.2	647.3	551.3
Demand Deposits	9,459.9	9,980.3	9,789.1	10,863.3	11,789.1	11,173.2
Demand Deposits (MA)	494.7	526.8	470.9	552.9	576.9	611.5
Demand Deposits (CoB)	8,965.2	9,453.5	9,318.2	10,310.4	11,212.2	10,561.8
Other Deposits	4,368.0	4,353.4	4,540.1	4,752.4	5,067.3	5,498.9
Other Deposits (MA)	26.4	22.5	42.3	25.2	45.4	128.3
Time and Savings Deposits (CoB)	4,341.7	4,330.9	4,497.8	4,727.2	5,021.9	5,370.7
Bonds and Securities (CoB)	0.0	0.0	0.0	0.0	0.0	0.0
Restricted Deposits	47.3	47.3	47.3	47.3	47.3	47.3
Capital Accounts	20,241.0	20,845.4	21,592.1	22,651.7	24,200.0	23,963.8
Capital Accounts (MA)	16,072.6	16,049.7	16,410.9	16,723.2	18,062.9	18,071.4
Capital Accounts (CoB)	4,168.4	4,795.7	5,181.2	5,928.6	6,137.2	5,892.4
Other Items (net)	(5,267.0)	(5,786.8)	(6,559.5)	(7,105.4)	(8,120.2)	(7,048.0)
Unclassified Liabilities (MA)	8,085.7	8,035.1	8,176.0	8,250.7	8,992.5	9,011.6
(-) Unclassified Assets (MA)	13,003.7	12,673.1	13,095.4	13,311.4	14,542.4	14,579.8
(-) Unclassified Assets (CoB)	2,274.7	2,940.6	3,191.8	2,961.0	3,352.9	3,361.5
Unclassified Liabilities (CoB)	2,469.3	2,918.9	2,707.4	2,019.1	1,867.1	2,504.0
Commercial Banks' Deposits (MA)	4,221.1	3,832.3	4,317.2	4,332.0	4,890.0	4,784.1
(-) Reserves (CoB)	4,618.6	4,774.1	4,794.9	5,036.6	5,441.9	4,955.1
Currency Holdings (CoB)	860.3	806.9	686.0	701.2	647.3	551.3
Liabilities to Central Bank (CoB)	0.0	0.0	0.0	0.0	0.0	0.0
(-) Claims on Domestic Banks (MA)	219.8	202.8	581.7	287.8	337.9	244.1
(-) Claims on Central Bank of Liberia (CoB)	809.5	809.5	821.9	834.2	883.7	884.1
(-) Unbalanced Items	23.0	20.1	39.6	22.7	41.8	125.5
Vertical Check	0.0	(0.0)	0.0	0.0	(0.0)	(0.0)

NBFIs: Non-Bank Financial Institutions

Source : Central Bank of Liberia, Monrovia, Liberia.

MONEY AND BANKING
1.1b: Depository Corporations Survey-2009 - continued

CENTRAL BANK OF LIBERIA

Millions of Liberian Dollars

	Jul-09	Aug-09	Sep-09	Oct-09	Nov-09	Dec-09
Foreign Assets (net)	(47,561.7)	(48,155.5)	(49,567.7)	(49,226.9)	(47,186.8)	(46,832.1)
Foreign Assets (MA)	13,935.3	24,796.8	25,283.4	24,994.3	24,125.2	26,258.2
(-) Foreign Liabilities (MA)	67,782.3	79,922.1	81,113.3	79,698.4	77,308.9	79,069.7
Foreign Assets (CoB)	7,141.5	7,842.2	7,294.7	6,414.3	6,853.1	6,799.4
(-) Foreign Liabilities (CoB)	856.3	872.4	1,032.4	937.2	856.1	820.1
Domestic Credit	84,990.2	87,070.6	88,066.4	86,351.0	83,718.8	86,629.8
Claims on General Government (net)	76,050.5	77,414.7	78,164.7	76,499.6	73,971.7	75,739.8
Claims on General Government (MA)	79,303.8	80,624.3	80,790.5	79,337.9	76,744.8	78,488.0
(-) General Government Deposits (MA)	3,754.9	3,767.6	3,149.1	3,356.6	3,194.2	3,239.3
Claims on General Government (CoB)	625.3	664.5	628.5	628.4	561.3	677.7
(-) General Government Deposits (CoB)	123.7	106.6	105.3	110.1	140.2	186.6
Claims on Public Corporations (MA)	0.0	0.0	0.0	0.0	0.0	0.0
Claims on Public Corporations (CoB)	1,025.0	871.8	1,040.9	1,033.7	1,133.3	1,264.2
Claims on Private Sector (MA)	216.6	258.9	177.3	173.2	96.8	123.5
Claims on Private Sector (CoB)	7,698.1	8,524.5	8,682.8	8,643.8	8,516.2	9,502.1
Claims on NBFIs (MA)	0.0	0.0	0.0	0.0	0.0	0.0
Claims on NBFIs (CoB)	0.0	0.7	0.7	0.7	0.8	0.1
Money	20,305.6	21,888.4	21,661.2	21,803.3	21,461.1	23,627.9
Currency Outside Banks (MA)	3,343.1	3,234.8	3,330.7	3,381.6	3,573.1	4,161.8
Liberian Currency in Circulation (MA)	3,892.4	3,923.6	3,979.3	3,903.3	3,930.9	4,583.4
(-) Currency Holdings (CoB)	549.2	688.8	648.6	521.7	357.8	421.6
Demand Deposits	11,494.2	12,917.5	12,244.9	12,303.4	11,919.7	13,458.5
Demand Deposits (MA)	609.8	611.9	609.6	797.0	747.5	772.5
Demand Deposits (CoB)	10,884.4	12,305.6	11,635.4	11,506.3	11,172.1	12,686.0
Other Deposits	5,468.2	5,736.1	6,085.6	6,118.3	5,968.3	6,007.6
Other Deposits (MA)	23.6	26.8	88.9	33.0	42.6	123.2
Time and Savings Deposits (CoB)	5,444.6	5,709.3	5,996.7	6,085.3	5,925.7	5,884.4
Bonds and Securities (CoB)	0.0	0.0	0.0	0.0	0.0	0.0
Restricted Deposits	47.3	47.3	47.3	47.3	47.3	47.3
Capital Accounts	24,783.0	25,272.7	25,176.9	24,578.8	23,639.5	24,553.3
Capital Accounts (MA)	18,468.6	18,710.6	18,568.0	18,048.4	17,134.0	17,844.7
Capital Accounts (CoB)	6,314.4	6,562.2	6,608.9	6,530.4	6,505.6	6,708.6
Other Items (net)	(7,683.9)	(8,266.5)	(8,297.9)	(9,272.4)	(8,573.3)	(8,307.6)
Unclassified Liabilities (MA)	9,170.5	9,340.5	9,388.4	9,226.6	8,888.2	9,156.0
(-) Unclassified Assets (MA)	14,839.4	15,105.6	15,261.8	14,997.3	14,630.0	14,797.6
(-) Unclassified Assets (CoB)	3,239.5	3,610.2	3,627.0	3,745.2	3,900.1	4,099.1
Unclassified Liabilities (CoB)	2,299.1	2,155.1	2,100.3	1,588.3	2,137.8	2,703.7
Commercial Banks' Deposits (MA)	4,892.6	4,770.5	4,846.6	4,731.4	4,531.0	5,108.3
(-) Reserves (CoB)	5,322.5	5,317.4	5,330.8	5,436.4	4,954.7	5,791.6
Currency Holdings (CoB)	549.2	688.8	648.6	521.7	357.8	421.6
Liabilities to Central Bank (CoB)	0.0	0.0	0.0	0.0	0.0	0.0
(-) Claims on Domestic Banks (MA)	316.0	304.8	229.7	305.0	193.6	242.3
(-) Claims on Central Bank of Liberia (CoB)	899.1	908.4	902.2	883.7	846.6	883.7
(-) Unbalanced Items	21.2	25.0	69.7	27.4	36.8	116.9
Vertical Check	0.0	(0.0)		0.0	0.0	(0.0)

NBFIs: Non-Bank Financial Institutions

Source : Central Bank of Liberia, Monrovia, Liberia.

MONEY AND BANKING

1.1c: Depository Corporations Survey- 2010

Millions of Liberian Dollars

	Jan-10	Feb-10	March-10	April-10	May-10	June-10
Foreign Assets (net)	(45,592.3)	(44,775.8)	(43,989.7)	(42,834.8)	(41,233.1)	17,674.3
Foreign Assets (MA)	28,454.6	28,779.7	27,656.5	27,818.5	27,213.4	28,444.1
(-) Foreign Liabilities (MA)	80,083.7	79,526.2	77,700.5	77,338.6	75,468.9	17,884.4
Foreign Assets (CoB)	6,813.0	6,920.9	6,901.6	7,633.1	7,798.5	8,067.3
(-) Foreign Liabilities (CoB)	776.2	950.2	847.3	947.7	776.2	952.7
Domestic Credit	86,066.5	86,281.4	84,423.5	84,198.1	82,863.3	25,418.0
Claims on General Government (net)	75,026.2	74,957.8	73,569.2	73,189.2	71,798.0	13,887.2
Claims on General Government (MA)	79,610.6	79,306.3	77,668.4	77,391.9	75,963.7	18,906.9
(-) General Government Deposits (MA)	4,899.1	4,676.4	4,447.6	4,411.1	4,375.7	5,284.4
Claims on General Government (CoB)	507.6	500.3	493.4	482.6	482.6	489.4
(-) General Government Deposits (CoB)	192.9	172.4	145.0	274.3	272.6	224.7
Claims on Public Corporations (MA)	0.0	0.0	0.0	0.0	0.0	0.0
Claims on Public Corporations (CoB)	1,565.7	1,566.4	1,679.5	1,942.2	1,873.9	2,038.0
Claims on Private Sector (MA)	123.8	126.8	45.7	44.8	45.3	60.8
Claims on Private Sector (CoB)	9,344.5	9,623.2	9,128.1	9,013.0	9,136.1	9,412.4
Claims on NBFIs (MA)	0.0	0.0	0.0	0.0	0.0	0.0
Claims on NBFIs (CoB)	6.3	7.3	1.0	9.0	10.1	19.7
Money	23,576.9	24,212.5	23,691.6	25,594.0	25,513.3	26,270.6
Currency Outside Banks (MA)	3,738.0	3,790.8	3,761.7	3,531.0	3,544.5	3,598.0
Liberian Currency in Circulation (MA)	4,460.0	4,461.6	4,389.4	4,269.0	4,248.8	4,413.1
(-) Currency Holdings (CoB)	721.9	670.8	627.7	738.0	704.3	815.1
Demand Deposits	13,533.3	14,059.4	13,909.9	15,392.7	15,228.9	15,733.9
Demand Deposits (MA)	790.6	798.9	793.9	818.3	811.3	818.4
Demand Deposits (CoB)	12,742.7	13,260.5	13,116.0	14,574.3	14,417.6	14,915.5
Other Deposits	6,305.6	6,362.2	6,020.0	6,670.4	6,739.9	6,938.8
Other Deposits (MA)	97.1	86.3	73.5	96.6	87.9	73.4
Time and Savings Deposits (CoB)	6,208.5	6,276.0	5,946.6	6,573.8	6,652.1	6,865.4
Bonds and Securities (CoB)	0.0	0.0	0.0	0.0	0.0	0.0
Restricted Deposits	55.8	55.8	55.8	55.8	55.4	55.4
Capital Accounts	25,293.4	25,812.4	24,917.5	25,437.3	25,287.2	25,422.4
Capital Accounts (MA)	18,344.4	18,511.3	18,140.2	18,117.3	18,064.4	18,309.2
Capital Accounts (CoB)	6,949.0	7,301.2	6,777.3	7,319.9	7,222.8	7,113.2
Other Items (net)	(8,354.8)	(8,488.9)	(8,157.6)	(9,627.1)	(9,137.8)	(8,582.8)
Unclassified Liabilities (MA)	9,226.2	9,152.5	9,041.3	9,147.9	8,819.9	9,515.0
(-) Unclassified Assets (MA)	14,981.0	14,876.7	14,617.7	14,554.7	14,210.3	14,381.1
(-) Unclassified Assets (CoB)	5,793.9	5,179.4	4,198.2	4,953.8	5,633.7	5,596.0
Unclassified Liabilities (CoB)	4,200.6	3,371.1	2,618.8	1,904.3	3,088.2	3,065.0
Commercial Banks' Deposits (MA)	5,486.6	6,111.6	5,717.0	5,871.9	6,195.9	5,989.1
(-) Reserves (CoB)	6,174.5	6,662.1	6,189.6	6,701.3	6,634.6	6,644.6
Currency Holdings (CoB)	721.9	670.8	627.7	738.0	704.3	815.1
Liabilities to Central Bank (CoB)	0.0	0.0	0.0	0.0	0.0	0.0
(-) Claims on Domestic Banks (MA)	230.2	248.0	327.4	272.9	652.5	502.5
(-) Claims on Central Bank of Liberia (CoB)	901.2	908.9	896.5	896.5	896.5	905.8
(-) Unbalanced Items	90.8	80.2	67.0	89.9	81.6	62.9
Vertical Check	0.0	(0.0)		(0.0)	(0.0)	(0.0)

NBFIs: Non-Bank Financial Institutions

Source : Central Bank of Liberia, Monrovia, Liberia.

MONEY AND BANKING
L.Ic: Depository Corporations Survey- 2010 (continued)
Millions of Liberian Dollars

	Jul-10	Aug-10	Sept-10	Oct-10	Nov-10	Dec-10
Foreign Assets (net)	17,132.6	17,503.9	18,450.3	19,664.3	20,307.4	23,629.5
Foreign Assets (MA)	29,033.9	29,801.9	30,353.3	32,542.2	31,812.3	33,388.0
(-) Foreign Liabilities (MA)	18,901.2	18,782.7	19,354.1	19,340.5	18,201.0	19,706.3
Foreign Assets (CoB)	7,888.6	7,345.1	8,225.8	7,393.1	7,542.0	10,957.1
(-) Foreign Liabilities (CoB)	888.6	860.4	774.6	930.4	845.9	1,009.2
Domestic Credit	26,367.9	25,853.8	27,538.8	25,777.3	25,897.7	26,284.9
Claims on General Government (net)	14,310.5	13,439.9	13,984.5	11,923.5	12,067.5	12,013.4
Claims on General Government (MA)	18,969.1	18,969.1	18,969.1	18,782.4	18,222.3	18,720.2
(-) General Government Deposits (MA)	4,960.4	5,553.4	4,974.9	6,848.7	6,094.0	6,519.8
Claims on General Government (CoB)	489.4	489.4	478.5	462.8	448.3	461.2
(-) General Government Deposits (CoB)	187.6	465.2	488.3	473.0	509.0	648.2
Claims on Public Corporations (MA)	0.0	0.0	0.0	0.0	0.0	0.0
Claims on Public Corporations (CoB)	598.1	729.9	739.0	633.9	589.8	500.5
Claims on Private Sector (MA)	163.2	167.7	55.0	57.6	57.5	350.7
Claims on Private Sector (CoB)	11,225.5	11,433.7	12,663.4	13,066.5	13,097.7	13,325.7
Claims on NBFIs (MA)	0.0	0.0	0.0	0.0	0.0	0.0
Claims on NBFIs (CoB)	70.5	82.5	97.0	95.9	85.1	94.7
Money	26,687.2	26,682.2	28,670.3	28,772.5	29,538.5	32,071.2
Currency Outside Banks (MA)	3,831.4	3,671.6	3,795.9	4,013.5	4,337.0	5,007.9
Liberian Currency in Circulation (MA)	4,554.5	4,539.9	4,583.7	4,674.9	4,910.3	5,550.6
(-) Currency Holdings (CoB)	723.1	868.3	787.8	661.4	573.3	542.6
Demand Deposits	15,848.3	16,163.1	17,471.4	16,871.0	16,354.3	19,172.1
Demand Deposits (MA)	843.3	842.4	841.3	934.2	886.3	967.4
Demand Deposits (CoB)	15,005.1	15,320.7	16,630.1	15,936.9	15,468.1	18,204.7
Other Deposits	7,007.5	6,847.5	7,403.0	7,887.9	8,847.1	7,891.2
Other Deposits (MA)	69.1	59.2	37.0	69.8	821.7	318.5
Time and Savings Deposits (CoB)	6,938.4	6,788.4	7,365.9	7,818.1	8,025.4	7,572.7
Bonds and Securities (CoB)	0.0	0.0	0.0	0.0	0.0	0.0
Restricted Deposits	55.4	53.9	53.9	53.9	53.9	53.2
Capital Accounts	25,551.4	25,547.7	26,189.8	26,072.5	25,137.5	26,567.0
Capital Accounts (MA)	18,387.9	18,374.9	18,434.0	18,202.7	17,236.6	17,406.5
Capital Accounts (CoB)	7,163.6	7,172.8	7,755.8	7,869.8	7,900.9	9,160.5
Other Items (net)	(8,724.4)	(8,867.0)	(8,887.9)	(9,387.5)	(7,703.1)	(8,458.5)
Unclassified Liabilities (MA)	9,695.5	9,573.7	9,829.6	9,813.8	9,306.9	9,772.2
(-) Unclassified Assets (MA)	14,797.6	14,715.8	15,266.3	15,258.1	14,242.2	14,616.6
(-) Unclassified Assets (CoB)	5,315.7	5,518.7	5,555.7	5,801.3	5,831.1	5,773.4
Unclassified Liabilities (CoB)	3,031.6	3,180.4	3,406.5	3,175.0	3,636.4	3,534.4
Commercial Banks' Deposits (MA)	5,942.7	6,228.4	6,870.1	6,984.8	7,115.0	7,437.2
(-) Reserves (CoB)	6,754.7	7,317.1	7,790.4	7,887.6	7,957.4	8,209.6
Currency Holdings (CoB)	723.1	868.3	787.8	661.4	573.3	542.6
Liabilities to Central Bank (CoB)	0.0	0.0	0.0	0.0	0.0	53.6
(-) Claims on Domestic Banks (MA)	398.8	312.5	293.5	241.9	250.4	615.6
(-) Claims on Central Bank of Liberia (CoB)	908.9	906.5	906.5	897.3	869.5	895.6
(-) Unbalanced Items	58.2	52.8	30.6	63.8	815.7	312.4
Vertical Check	(0.0)	0.0		(0.0)	0.0	(0.0)

NBFIs: Non-Bank Financial Institutions
Source: Central Bank of Liberia, Monrovia, Liberia.

MONEY AND BANKING

1.1c: Depository Corporations Survey - 2011*Millions of Liberian Dollars*

	Jan-11	Feb-11	Mar-11	Apr-11	May-11	Jun-11
Foreign Assets (net)	22,475.0	21,539.7	22,015.0	22,571.8	25,146.2	22,892.3
Foreign Assets (MA)	34,091.0	33,391.4	33,806.4	34,455.9	36,120.2	35,660.7
(-) Foreign Liabilities (MA)	20,253.8	20,321.3	20,404.4	20,986.1	20,735.6	20,800.5
Foreign Assets (CoB)	9,699.2	9,719.0	9,894.2	10,510.7	11,157.5	9,418.0
(-) Foreign Liabilities (CoB)	1,061.4	1,249.4	1,281.2	1,408.6	1,395.9	1,386.0
Domestic Credit	26,660.1	27,936.0	28,137.5	28,892.9	28,086.6	29,516.2
Claims on General Government (net)	11,562.9	12,484.5	12,460.0	12,774.5	11,759.2	13,135.5
Claims on General Government (MA)	18,969.6	18,907.5	18,845.3	18,969.4	18,968.7	19,094.2
(-) General Government Deposits (MA)	7,214.7	6,208.7	6,035.9	5,731.9	6,709.5	5,390.4
Claims on General Government (CoB)	467.6	455.2	453.6	456.8	445.9	448.9
(-) General Government Deposits (CoB)	659.6	669.6	803.0	919.8	945.9	1,017.3
Claims on Public Corporations (MA)	0.0	0.0	0.0	0.0	0.0	0.0
Claims on Public Corporations (CoB)	920.1	845.3	886.3	860.8	853.6	893.0
Claims on Private Sector (MA)	362.5	363.8	353.2	357.0	357.1	359.8
Claims on Private Sector (CoB)	13,744.7	14,189.1	14,365.9	14,808.1	15,007.9	14,990.9
Claims on NBFIs (MA)	0.0	0.0	0.0	0.0	0.0	0.0
Claims on NBFIs (CoB)	69.9	53.2	72.2	92.6	108.9	137.1
Money	31,523.4	31,672.1	32,697.8	33,718.9	35,272.5	35,666.9
Currency Outside Banks (MA)	4,615.5	4,583.4	4,726.9	4,809.2	4,700.5	4,924.6
Liberian Currency in Circulation (MA)	5,496.0	5,528.1	5,605.9	5,653.9	5,626.1	5,647.3
(-) Currency Holdings (CoB)	880.5	944.8	879.0	844.7	925.6	722.7
Demand Deposits	18,844.3	18,491.2	18,789.7	19,503.7	20,993.1	20,725.8
Demand Deposits (MA)	971.0	1,007.0	1,020.8	1,024.3	1,042.7	1,073.5
Demand Deposits (CoB)	17,873.3	17,484.2	17,768.9	18,479.3	19,950.4	19,652.3
Other Deposits	8,063.7	8,597.5	9,181.2	9,406.1	9,579.0	10,016.6
Other Deposits (MA)	122.8	27.7	224.2	172.9	124.1	93.0
Time and Savings Deposits (CoB)	7,940.8	8,569.8	8,957.0	9,233.2	9,454.9	9,923.5
Bonds and Securities (CoB)	0.0	0.0	0.0	0.0	0.0	0.0
Restricted Deposits	53.2	52.8	52.8	52.8	52.8	52.8
Capital Accounts	26,917.3	27,311.4	26,973.2	27,442.0	27,068.3	26,826.0
Capital Accounts (MA)	17,694.6	17,550.5	17,412.5	17,792.4	17,466.9	17,677.0
Capital Accounts (CoB)	9,222.7	9,760.9	9,560.8	9,649.5	9,601.4	9,148.9
Other Items (net)	(9,236.0)	(9,532.9)	(9,347.1)	(9,576.0)	(9,036.7)	(10,044.3)
Unclassified Liabilities (MA)	9,513.1	9,603.2	9,816.8	9,906.2	9,857.5	9,868.4
(-) Unclassified Assets (MA)	15,027.6	15,077.4	15,154.4	15,764.4	15,583.0	15,665.5
(-) Unclassified Assets (CoB)	6,267.0	6,072.1	6,240.9	6,626.9	6,379.0	6,490.4
Unclassified Liabilities (CoB)	4,224.6	3,911.3	4,004.3	4,498.6	4,246.8	4,002.4
Commercial Banks' Deposits (MA)	7,779.8	8,128.2	8,493.5	8,856.0	10,079.8	10,860.5
(-) Reserves (CoB)	9,063.0	9,550.2	9,703.8	10,069.5	10,878.8	11,989.2
Currency Holdings (CoB)	880.5	944.8	879.0	844.7	925.6	722.7
Liabilities to Central Bank (CoB)	108.8	108.4	108.0	108.8	108.8	109.5
(-) Claims on Domestic Banks (MA)	607.7	647.3	867.2	586.0	625.6	643.0
(-) Claims on Central Bank of Liberia (CoB)	894.2	903.4	900.4	906.5	906.5	906.5
(-) Unbalanced Items	116.8	21.6	217.9	163.0	117.9	86.8
Vertical Check	0.0	0.0		0.0	(0.0)	0.0

NBFIs: Non-Bank Financial Institutions

Source: Central Bank of Liberia, Monrovia, Liberia.

MONEY AND BANKING

CENTRAL BANK OF LIBERIA

1.1c: Depository Corporations Survey - 2011- Continued

Millions of Liberian Dollars

	Jul-11	Aug-11	Sep-11	Oct-11
Foreign Assets (net)	24,209.4	24,288.7	24,705.0	23,287.9
Foreign Assets (MA)	35,704.5	36,292.2	35,876.0	35,589.4
(-) Foreign Liabilities (MA)	20,681.6	20,807.8	20,664.1	20,664.3
Foreign Assets (CoB)	10,379.9	10,012.7	10,200.7	9,146.8
(-) Foreign Liabilities (CoB)	1,193.4	1,208.3	707.7	784.0
Domestic Credit	30,187.4	30,212.8	31,834.9	32,321.2
Claims on General Government (net)	13,936.3	13,204.8	14,412.1	14,153.5
Claims on General Government (MA)	18,969.7	18,969.3	18,845.4	18,852.3
(-) General Government Deposits (MA)	4,526.3	5,371.7	4,134.9	4,278.5
Claims on General Government (CoB)	445.9	445.9	500.3	442.8
(-) General Government Deposits (CoB)	953.0	838.6	798.7	863.0
Claims on Public Corporations (MA)	0.0	0.0	0.0	0.0
Claims on Public Corporations (CoB)	780.9	958.3	1,080.2	719.3
Claims on Private Sector (MA)	357.7	361.4	360.2	346.4
Claims on Private Sector (CoB)	14,977.5	15,542.9	15,880.6	16,985.8
Claims on NBFIs (MA)	0.0	0.0	0.0	0.0
Claims on NBFIs (CoB)	135.0	145.4	101.9	116.1
Money	36,214.7	36,583.8	40,737.4	41,022.0
Currency Outside Banks (MA)	5,071.8	5,026.5	5,124.3	5,463.4
Liberian Currency in Circulation (MA)	5,660.9	5,696.2	5,710.5	5,958.0
(-) Currency Holdings (CoB)	589.1	669.7	586.2	494.5
Demand Deposits	20,967.5	21,765.3	23,527.7	23,938.0
Demand Deposits (MA)	1,062.8	1,112.4	1,088.4	1,178.5
Demand Deposits (CoB)	19,904.6	20,652.8	22,439.3	22,759.5
Other Deposits	10,175.4	9,792.1	12,085.4	11,620.5
Other Deposits (MA)	80.9	(411.9)	1,062.4	136.9
Time and Savings Deposits (CoB)	10,094.5	10,204.0	11,023.0	11,483.7
Bonds and Securities (CoB)	0.0	0.0	0.0	0.0
Restricted Deposits	52.8	51.7	51.7	54.1
Capital Accounts	26,790.3	27,447.1	27,252.1	27,191.9
Capital Accounts (MA)	17,546.6	17,489.5	17,260.9	17,170.8
Capital Accounts (CoB)	9,243.7	9,957.6	9,991.1	10,021.1
Other Items (net)	(8,580.1)	(9,993.0)	(10,438.8)	(12,522.1)
Unclassified Liabilities (MA)	10,782.3	10,851.4	10,789.4	10,820.8
(-) Unclassified Assets (MA)	15,579.3	15,676.5	16,100.9	16,084.2
(-) Unclassified Assets (CoB)	6,400.9	6,843.2	8,890.3	10,885.3
Unclassified Liabilities (CoB)	4,252.0	4,174.6	4,668.9	5,237.1
Commercial Banks' Deposits (MA)	10,904.1	11,071.4	11,149.2	11,304.8
(-) Reserves (CoB)	11,757.4	12,323.2	12,215.7	12,095.9
Currency Holdings (CoB)	589.1	669.7	586.2	494.5
Liabilities to Central Bank (CoB)	108.8	108.8	108.0	108.0
(-) Claims on Domestic Banks (MA)	647.0	701.9	689.7	653.0
(-) Claims on Central Bank of Liberia (CoB)	906.5	906.0	899.8	899.8
(-) Unbalanced Items	74.7	(418.0)	1,056.1	130.8
Vertical Check	(0.0)	(0.0)		(0.0)

NBFIs: Non-Bank Financial Institutions

Source: Central Bank of Liberia, Monrovia, Liberia.

MONEY AND BANKING

CENTRAL BANK OF LIBERIA

1.2b: Sectoral Balance Sheet of Other Depository Corporations - 2009

Thousands of Liberian Dollars

	Jan-09	Feb-09	Mar-09	Apr-09	May-09	Jun-09
Assets						
Reserves	4,618,624	4,774,050	4,794,949	5,036,633	5,441,930	4,955,069
<i>of which: Cash on Hand: Coins/LD Notes</i>	860,251	806,918	685,965	701,183	647,295	551,335
Foreign Assets	5,525,388	6,405,024	6,188,737	6,977,315	6,570,066	7,008,690
Claims on General Government	594,394	594,394	603,610	596,200	632,062	525,226
Claims on Public Corporations	407,142	509,929	579,086	724,930	760,746	852,511
Claims on Private Sector	6,382,317	6,345,374	6,395,107	6,659,051	7,553,358	7,731,857
Claims on Central Bank of Liberia	809,525	809,525	821,883	834,240	883,669	884,092
Claims on NBFIs	1,703	786	666	703	825	793
Unclassified Assets	2,274,650	2,940,551	3,191,828	2,961,026	3,352,932	3,361,533
Total Assets	20,613,744	22,379,633	22,575,865	23,790,099	25,195,587	25,319,770
	Jan-09	Feb-09	Mar-09	Apr-09	May-09	Jun-09
Liabilities						
Demand Deposits	8,965,214	9,453,508	9,318,178	10,310,360	11,212,240	10,561,770
Time and Savings Deposits	4,341,663	4,330,897	4,497,753	4,727,228	5,021,926	5,370,652
Restricted Deposits	28,567	28,567	28,567	28,567	28,567	28,567
Bonds and Securities	0	0	0	0	0	0
Foreign Liabilities	554,118	766,604	752,900	691,768	822,903	826,777
Government Deposits	86,496	85,510	89,830	84,480	105,707	135,628
Liabilities to Central Bank of Liberia	0	0	0	0	0	0
Capital Accounts	4,168,405	4,795,685	5,181,219	5,928,553	6,137,165	5,892,384
Unclassified Liabilities	2,469,282	2,918,863	2,707,418	2,019,144	1,867,079	2,503,993
Total Liabilities	20,613,744	22,379,633	22,575,865	23,790,099	25,195,587	25,319,770
Vertical Check (Assets/Liabilities)	0	0	0	0	0	0

NBFIs: Non-Bank Financial Institutions

Source : Central Bank of Liberia, Monrovia, Liberia.

MONEY AND BANKING

CENTRAL BANK OF LIBERIA

1.2b: Sectoral Balance Sheet of Other Depository Corporations - 2009- continued

Thousands of Liberian Dollars

	Jul-09	Aug-09	Sep-09	Oct-09	Nov-09	Dec-09
Assets						
Reserves	5,322,529	5,317,428	5,330,824	5,436,430	4,954,690	5,791,600
<i>of which: Cash on Hand: Coins/LD Notes</i>	549,223	688,822	648,597	521,659	357,764	421,636
Foreign Assets	7,141,504	7,842,188	7,294,697	6,414,323	6,853,148	6,799,440
Claims on General Government	625,331	664,528	628,502	628,403	561,288	677,745
Claims on Public Corporations	1,025,031	871,833	1,040,898	1,033,713	1,133,260	1,264,230
Claims on Private Sector	7,698,068	8,524,509	8,682,783	8,643,813	8,516,239	9,502,127
Claims on Central Bank of Liberia	899,115	908,383	902,205	883,669	846,597	883,669
Claims on NBFIs	44	726	661	749	784	72
Unclassified Assets	3,239,485	3,610,166	3,626,985	3,745,202	3,900,058	4,099,072
Total Assets	25,951,107	27,739,760	27,507,554	26,786,302	26,766,064	29,017,954
	Jul-09	Aug-09	Sep-09	Oct-09	Nov-09	Dec-09
Liabilities						
Demand Deposits	10,884,417	12,305,643	11,635,370	11,506,339	11,172,139	12,685,993
Time and Savings Deposits	5,444,640	5,709,325	5,996,684	6,085,346	5,925,662	5,884,393
Restricted Deposits	28,567	28,567	28,567	28,567	28,567	28,567
Bonds and Securities	0	0	0	0	0	0
Foreign Liabilities	856,294	872,384	1,032,395	937,236	856,145	820,059
Government Deposits	123,722	106,632	105,255	110,132	140,163	186,587
Liabilities to Central Bank of Liberia	0	0	0	0	0	0
Capital Accounts	6,314,382	6,562,152	6,608,934	6,530,408	6,505,563	6,708,615
Unclassified Liabilities	2,299,085	2,155,058	2,100,348	1,588,275	2,137,826	2,703,741
Total Liabilities	25,951,107	27,739,760	27,507,554	26,786,302	26,766,064	29,017,954
Vertical Check (Assets/Liabilities)	0	0	0	0	0	0

NBFIs: Non-Bank Financial Institutions

Source : Central Bank of Liberia, Monrovia, Liberia.

MONEY AND BANKING

CENTRAL BANK OF LIBERIA

1.2c: Sectoral Balance Sheet of Other Depository Corporations - 2010

Thousands of Liberian Dollars

	Jan-10	Feb-10	Mar-10	Apr-10	May-10	Jun-10
Assets						
Reserves	6,174,491	6,662,125	6,189,634	6,701,321	6,634,582	6,644,633
<i>of which: Cash on Hand: Coins/LD Notes</i>	721,935	670,770	627,673	737,980	704,254	815,142
Foreign Assets	6,813,003	6,920,877	6,901,645	7,633,061	7,798,525	8,067,344
Claims on General Government	507,600	500,250	493,351	482,625	482,625	489,375
Claims on Public Corporations	1,565,742	1,566,420	1,679,494	1,942,152	1,873,860	2,037,954
Claims on Private Sector	9,344,520	9,623,164	9,128,124	9,012,991	9,136,053	9,412,419
Claims on Central Bank of Liberia	901,184	908,862	896,505	896,505	896,505	905,773
Claims on NBFIs	6,303	7,254	1,017	8,986	10,113	19,657
Unclassified Assets	5,793,903	5,179,401	4,198,236	4,953,777	5,633,739	5,595,950
Total Assets	31,106,746	31,368,354	29,488,007	31,631,419	32,466,002	33,173,106
	Jan-10	Feb-10	Mar-10	Apr-10	May-10	Jun-10
Liabilities						
Demand Deposits	12,742,665	13,260,481	13,115,999	14,574,345	14,417,562	14,915,456
Time and Savings Deposits	6,208,487	6,275,991	5,946,575	6,573,774	6,652,052	6,865,423
Restricted Deposits	36,980	36,985	36,985	36,985	36,632	36,632
Bonds and Securities	0	0	0	0	0	0
Foreign Liabilities	776,192	950,230	847,345	947,710	776,157	952,681
Government Deposits	192,909	172,398	144,965	274,327	272,563	224,680
Liabilities to Central Bank of Liberia	0	0	0	0	0	0
Capital Accounts	6,948,961	7,301,168	6,777,349	7,319,944	7,222,814	7,113,195
Unclassified Liabilities	4,200,553	3,371,101	2,618,790	1,904,333	3,088,221	3,065,040
Total Liabilities	31,106,746	31,368,354	29,488,007	31,631,419	32,466,002	33,173,106
Vertical Check (Assets/Liabilities)	0	0	0	0	0	0

NBFIs: Non-Bank Financial Institutions

Source : Central Bank of Liberia, Monrovia, Liberia.

MONEY AND BANKING

CENTRAL BANK OF LIBERIA

1.2c: Sectoral Balance Sheet of Other Depository Corporations - 2010

Thousands of Liberian Dollars

	Jul-10	Aug-10	Sep-10	Oct-10	Nov-10	Dec-10
Assets						
Reserves	6,754,660	7,317,092	7,790,393	7,887,626	7,957,353	8,209,588
<i>of which: Cash on Hand: Coins/LD Notes</i>	723,091	868,284	787,797	661,389	573,316	542,617
Foreign Assets	7,888,644	7,345,057	8,225,803	7,393,100	7,541,972	10,957,067
Claims on General Government	489,375	489,375	478,500	462,788	448,279	461,179
Claims on Public Corporations	598,135	729,937	738,980	633,914	589,845	500,477
Claims on Private Sector	11,225,520	11,433,728	12,663,390	13,066,475	13,097,722	13,325,657
Claims on Central Bank of Liberia	908,862	906,538	906,538	897,270	869,466	895,611
Claims on NBFIs	70,521	82,508	96,968	95,854	85,121	94,698
Unclassified Assets	5,315,690	5,518,703	5,555,718	5,801,346	5,831,144	5,773,423
Total Assets	33,251,407	33,822,938	36,456,290	36,238,372	36,420,903	40,217,700
	Jul-10	Aug-10	Sep-10	Oct-10	Nov-10	Dec-10
Liabilities						
Demand Deposits	15,005,053	15,320,742	16,630,139	15,936,873	15,468,096	18,204,714
Time and Savings Deposits	6,938,369	6,788,358	7,365,935	7,818,103	8,025,396	7,572,695
Restricted Deposits	36,632	35,127	35,127	35,127	35,127	34,412
Bonds and Securities	0	0	0	0	0	0
Foreign Liabilities	888,647	860,355	774,611	930,449	845,875	1,009,242
Government Deposits	187,588	465,153	488,256	473,000	509,034	648,156
Liabilities to Central Bank of Liberia	0	0	0	0	0	53,625
Capital Accounts	7,163,557	7,172,844	7,755,768	7,869,835	7,900,944	9,160,492
Unclassified Liabilities	3,031,561	3,180,358	3,406,454	3,174,984	3,636,431	3,534,364
Total Liabilities	33,251,407	33,822,938	36,456,290	36,238,372	36,420,903	40,217,700
Vertical Check (Assets/Liabilities)	0	0	0	0	0	0

NBFIs: Non-Bank Financial Institutions

Source: Central Bank of Liberia, Monrovia, Liberia.

MONEY AND BANKING

CENTRAL BANK OF LIBERIA

1.2c: Sectoral Balance Sheet of Other Depository Corporations - 2011

Thousands of Liberian Dollars

	Jan-11	Feb-11	Mar-11	Apr-11	May-11	Jun-11
Assets						
Reserves	9,062,971	9,550,168	9,703,791	10,069,503	10,878,778	11,989,158
<i>of which: Cash on Hand: Coins/LD Notes</i>	880,544	944,753	878,989	844,650	925,569	722,668
Foreign Assets	9,699,204	9,719,014	9,894,163	10,510,723	11,157,492	9,418,032
Claims on General Government	467,629	455,179	453,604	456,754	445,868	448,943
Claims on Public Corporations	920,094	845,350	886,256	860,792	853,552	892,970
Claims on Private Sector	13,744,667	14,189,133	14,365,887	14,808,125	15,007,944	14,990,876
Claims on Central Bank of Liberia	894,181	903,444	900,355	906,533	906,533	906,533
Claims on NBFIs	69,930	53,184	72,219	92,601	108,889	137,074
Unclassified Assets	6,266,966	6,072,065	6,240,852	6,626,870	6,379,001	6,490,429
Total Assets	41,125,641	41,787,536	42,517,127	44,331,901	45,738,058	45,274,015
	Jan-11	Feb-11	Mar-11	Apr-11	May-11	Jun-11
Liabilities						
Demand Deposits	17,873,259	17,484,231	17,768,882	18,479,321	19,950,355.38	19,652,319.21
Time and Savings Deposits	7,940,847	8,569,758	8,956,965	9,233,199	9,454,912.80	9,923,518.95
Restricted Deposits	34,412	34,412	34,011	34,011	34,011	34,011
Bonds and Securities	0	0	0	0	0	0
Foreign Liabilities	1,061,444	1,249,368	1,281,198	1,408,623	1,395,941	1,386,014
Government Deposits	659,629	669,578	803,022	919,812	945,934	1,017,293
Liabilities to Central Bank of Liberia	108,750	108,375	108,000	108,750	108,750	109,500
Capital Accounts	9,222,734	9,760,904	9,560,758	9,649,546	9,601,369	9,148,945
Unclassified Liabilities	4,224,566	3,911,311	4,004,290	4,498,639	4,246,785	4,002,413
Total Liabilities	41,125,641	41,787,536	42,517,127	44,331,901	45,738,058	45,274,015
Vertical Check (Assets/Liabilities)	0	0	0	0	0	0

NBFIs: Non-Bank Financial Institutions

Source : Central Bank of Liberia, Monrovia, Liberia.

MONEY AND BANKING

CENTRAL BANK OF LIBERIA

1.2c: Sectoral Balance Sheet of Other Depository Corporations - 2011- Continued

Thousands of Liberian Dollars

	Jul-11	Aug-11	Sep-11	Oct-11
Assets				
Reserves	11,757,383	12,323,153	12,215,703	12,095,888
<i>of which: Cash on Hand: Coins/LD Notes</i>	589,080	669,717	586,191	494,536
Foreign Assets	10,379,895	10,012,656	10,200,699	9,146,767
Claims on General Government	445,868	445,868	500,348	442,818
Claims on Public Corporations	780,927	958,317	1,080,184	719,280
Claims on Private Sector	14,977,487	15,542,879	15,880,600	16,985,835
Claims on Central Bank of Liberia	906,533	905,956	899,777	899,777
Claims on NBFIs	134,987	145,432	101,875	116,122
Unclassified Assets	6,400,898	6,843,227	8,890,325	10,885,251
Total Assets	45,783,979	47,177,489	49,769,512	51,291,738
	Jul-11	Aug-11	Sep-11	Oct-11
Liabilities				
Demand Deposits	19,904,640.35	20,652,821.98	22,439,299.53	22,759,475.57
Time and Savings Deposits	10,094,496.04	10,203,973.70	11,022,975.98	11,483,680.58
Restricted Deposits	34,011	32,900	32,900	35,330
Bonds and Securities	0	0	0	0
Foreign Liabilities	1,193,357	1,208,337	707,665	784,004
Government Deposits	953,032	838,572	798,687	863,046
Liabilities to Central Bank of Liberia	108,750	108,750	108,000	108,000
Capital Accounts	9,243,710	9,957,570	9,991,132	10,021,097
Unclassified Liabilities	4,251,983	4,174,563	4,668,853	5,237,104
Total Liabilities	45,783,979	47,177,489	49,769,512	51,291,738
Vertical Check (Assets/Liabilities)	0	0	0	0

NBFIs: Non-Bank Financial Institutions

Source : Central Bank of Liberia, Monrovia, Liberia.

MONEY AND BANKING

CENTRAL BANK OF LIBERIA

1.3b: Sectoral Balance Sheet of Central Bank of Liberia - 2009

Thousands of Liberian Dollars

	Jan-09	Feb-09	Mar-09	Apr-09	May-09	Jun-09
Assets						
Foreign Assets	11,102,121	10,613,314	11,132,982	11,130,470	12,893,489	13,673,785
Claims on General Government	69,957,040	68,605,110	70,403,834	71,564,303	77,736,079	77,896,104
Claims on Public Corporations	0	0	0	0	0	0
Claims on Private Sector	106,946	349,908	191,609	196,519	208,294	207,415
Claims on Domestic Banks	219,822	202,846	581,686	287,841	337,939	244,065
Claims on NBFIs	0	0	0	0	0	0
Unclassified Assets	13,003,725	12,673,110	13,095,362	13,311,444	14,542,419	14,579,812
Total Assets	94,389,654	92,444,288	95,405,474	96,490,576	105,718,219	106,601,181
	Jan-09	Feb-09	Mar-09	Apr-09	May-09	Jun-09
Liabilities						
Reserve Money	8,764,193	8,345,865	8,724,106	8,750,867	9,332,301	9,321,971
Other Deposits	0	0	0	0	0	0
Restricted Reserves	18,781	18,781	18,781	18,781	18,781	18,781
Foreign Liabilities	58,346,413	56,859,449	58,819,462	59,898,964	66,377,214	66,554,948
Liabilities to General Government	3,101,977	3,135,381	3,256,187	2,848,070	2,934,522	3,622,464
Capital Accounts	16,072,561	16,049,696	16,410,896	16,723,165	18,062,852	18,071,369
Unclassified Liabilities	8,085,729	8,035,116	8,176,041	8,250,728	8,992,550	9,011,649
Total Liabilities	94,389,654	92,444,288	95,405,474	96,490,576	105,718,219	106,601,181
Vertical Check (Assets/Liabilities)	(0)	0	0	0	0	0

NBFIs: Non-Bank Financial Institutions

Source : Central Bank of Liberia, Monrovia, Liberia.

MONEY AND BANKING

CENTRAL BANK OF LIBERIA

1.3b: Sectoral Balance Sheet of Central Bank of Liberia-2009- continued

Thousands of Liberian Dollars

	Jul-09	Aug-09	Sep-09	Oct-09	Nov-09	Dec-09
Assets						
Foreign Assets	13,935,318	24,796,787	25,283,370	24,994,349	24,125,182	26,258,217
Claims on General Government	79,303,820	80,624,320	80,790,535	79,337,928	76,744,788	78,488,028
Claims on Public Corporations	0	0	0	0	0	0
Claims on Private Sector	216,585	258,899	177,305	173,152	96,804	123,534
Claims on Domestic Banks	316,020	304,755	229,713	305,006	193,556	242,307
Claims on NBFIs	0	0	0	0	0	0
Unclassified Assets	14,839,373	15,105,612	15,261,795	14,997,348	14,629,981	14,797,637
Total Assets	108,611,116	121,090,373	121,742,718	119,807,784	115,790,312	119,909,724
	Jul-09	Aug-09	Sep-09	Oct-09	Nov-09	Dec-09
Liabilities						
Reserve Money	9,415,976	9,330,936	9,505,174	9,459,087	9,246,237	10,581,224
Other Deposits	0	0	0	0	0	0
Restricted Reserves	18,781	18,781	18,781	18,781	18,781	18,781
Foreign Liabilities	67,782,276	79,922,059	81,113,323	79,698,377	77,308,942	79,069,703
Liabilities to General Government	3,754,935	3,767,550	3,149,051	3,356,583	3,194,199	3,239,340
Capital Accounts	18,468,628	18,710,576	18,567,980	18,048,372	17,133,964	17,844,664
Unclassified Liabilities	9,170,520	9,340,471	9,388,410	9,226,584	8,888,190	9,156,012
Total Liabilities	108,611,116	121,090,373	121,742,718	119,807,784	115,790,312	119,909,724
Vertical Check (Assets/Liabilities)	(0)	0	0	0	0	0

NBFIs: Non-Bank Financial Institutions

Source : Central Bank of Liberia, Monrovia, Liberia.

MONEY AND BANKING

CENTRAL BANK OF LIBERIA

1.3c: Sectoral Balance Sheet of Central Bank of Liberia - 2010

Thousands of Liberian Dollars

	Jan-10	Feb-10	March-10	April-10	May-10	June-10
Assets						
Foreign Assets	28,454,558	28,779,711	27,656,483	27,818,496	27,213,432	28,444,068
Claims on General Government	79,610,570	79,306,270	77,668,378	77,391,918	75,963,664	18,906,897
Claims on Public Corporations	0	0	0	0	0	0
Claims on Private Sector	123,764	126,774	45,740	44,847	45,256	60,761
Claims on Domestic Banks	230,175	248,029	327,362	272,935	652,458	502,458
Claims on NBFIs	0	0	0	0	0	0
Unclassified Assets	14,981,011	14,876,660	14,617,682	14,554,687	14,210,329	14,381,142
Total Assets	123,400,078	123,337,445	120,315,646	120,082,883	118,085,139	62,295,326
	Jan-10	Feb-10	March-10	April-10	May-10	June-10
Liabilities						
Reserve Money	10,827,951	11,452,356	10,967,263	11,049,159	11,337,501	11,283,522
Other Deposits	0	0	0	0	0	0
Restricted Reserves	18,781	18,781	18,781	18,781	18,781	18,781
Foreign Liabilities	80,083,679	79,526,178	77,700,494	77,338,640	75,468,893	17,884,448
Liabilities to General Government	4,899,058	4,676,364	4,447,603	4,411,052	4,375,688	5,284,434
Capital Accounts	18,344,443	18,511,259	18,140,166	18,117,314	18,064,358	18,309,178
Unclassified Liabilities	9,226,166	9,152,506	9,041,338	9,147,937	8,819,919	9,514,963
Total Liabilities	123,400,078	123,337,445	120,315,646	120,082,883	118,085,139	62,295,326
Vertical Check (Assets/Liabilities)	(0)	0	0	0	0	0

NBFIs: Non-Bank Financial Institutions

Source : Central Bank of Liberia, Monrovia, Liberia.

MONEY AND BANKING

CENTRAL BANK OF LIBERIA

1.3c: Sectoral Balance Sheet of Central Bank of Liberia - 2010 (continued)
Thousands of Liberian Dollars

	Jul-10	Aug-10	Sep-10	Oct-10	Nov-10	Dec-10
Assets						
Foreign Assets	29,033,901	29,801,853	30,353,272	32,542,189	31,812,287	33,388,024
Claims on General Government	18,969,127	18,969,127	18,969,127	18,782,430	18,222,341	18,720,198
Claims on Public Corporations	0	0	0	0	0	0
Claims on Private Sector	163,217	167,736	54,986	57,564	57,463	350,667
Claims on Domestic Banks	398,767	312,480	293,465	241,882	250,354	615,641
Claims on NBFIs	0	0	0	0	0	0
Unclassified Assets	14,797,555	14,715,792	15,266,309	15,258,098	14,242,158	14,616,567
Total Assets	63,362,566	63,966,987	64,937,158	66,882,163	64,584,604	67,691,098
	Jul-10	Aug-10	Sep-10	Oct-10	Nov-10	Dec-10
Liabilities						
Reserve Money	11,398,766	11,663,517	12,325,689	12,657,632	13,727,287	14,267,497
Other Deposits	0	0	0	0	0	0
Restricted Reserves	18,781	18,781	18,781	18,781	18,781	18,781
Foreign Liabilities	18,901,249	18,782,685	19,354,131	19,340,528	18,200,987	19,706,304
Liabilities to General Government	4,960,449	5,553,434	4,974,899	6,848,734	6,094,037	6,519,838
Capital Accounts	18,387,867	18,374,853	18,434,033	18,202,695	17,236,590	17,406,510
Unclassified Liabilities	9,695,455	9,573,716	9,829,626	9,813,795	9,306,921	9,772,168
Total Liabilities	63,362,566	63,966,987	64,937,158	66,882,164	64,584,604	67,691,098
Vertical Check (Assets/Liabilities)	0	0	0	0	0	0

NBFIs: Non-Bank Financial Institutions

Source : Central Bank of Liberia, Monrovia, Liberia.

MONEY AND BANKING

CENTRAL BANK OF LIBERIA

1.3c: Sectoral Balance Sheet of Central Bank of Liberia - 2011
Thousands of Liberian Dollars

	Jan-11	Feb-11	Mar-11	Apr-11	May-11	Jun-11
Assets						
Foreign Assets	34,090,999	33,391,377	33,806,417	34,455,851	36,120,242	35,660,715
Claims on General Government	18,969,588	18,907,536	18,845,285	18,969,384	18,968,683	19,094,182
Claims on Public Corporations	0	0	0	0	0	0
Claims on Private Sector	362,532	363,837	353,185	356,980	357,078	359,815
Claims on Domestic Banks	607,717	647,325	867,250	585,994	625,617	642,989
Claims on NBFIs	0	0	0	0	0	0
Unclassified Assets	15,027,582	15,077,369	15,154,384	15,764,387	15,583,000	15,665,474
Total Assets	69,058,418	68,387,444	69,026,521	70,132,597	71,654,620	71,423,175
	Jan-11	Feb-11	Mar-11	Apr-11	May-11	Jun-11
Liabilities						
Reserve Money	14,363,567	14,684,978	15,338,149	15,697,202	16,866,437	17,668,127
Other Deposits	0	0	0	0	0	0
Restricted Reserves	18,781	18,781	18,781	18,781	18,781	18,781
Foreign Liabilities	20,253,764	20,321,309	20,404,416	20,986,103	20,735,580	20,800,472
Liabilities to General Government	7,214,669	6,208,661	6,035,886	5,731,876	6,709,456	5,390,367
Capital Accounts	17,694,579	17,550,510	17,412,480	17,792,423	17,466,900	17,677,027
Unclassified Liabilities	9,513,058	9,603,204	9,816,809	9,906,212	9,857,466	9,868,401
Total Liabilities	69,058,418	68,387,444	69,026,521	70,132,597	71,654,620	71,423,175
Vertical Check (Assets/Liabilities)	0	0	0	0	0	0

NBFIs: Non-Bank Financial Institutions

Source : Central Bank of Liberia, Monrovia, Liberia.

MONEY AND BANKING

CENTRAL BANK OF LIBERIA

1.3c: Sectoral Balance Sheet of Central Bank of Liberia - 2011- Continued
Thousands of Liberian Dollars

	Jul-11	Aug-11	Sep-11	Oct-11
Assets				
Foreign Assets	35,704,476	36,292,165	35,876,040	35,589,415
Claims on General Government	18,969,705	18,969,271	18,845,357	18,852,285
Claims on Public Corporations	0	0	0	0
Claims on Private Sector	357,683	361,357	360,206	346,400
Claims on Domestic Banks	646,978	701,859	689,713	653,013
Claims on NBFIs	0	0	0	0
Unclassified Assets	15,579,258	15,676,525	16,100,947	16,084,177
Total Assets	71,258,100	72,001,178	71,872,264	71,525,290
	Jul-11	Aug-11	Sep-11	Oct-11
Liabilities				
Reserve Money	17,702,527	17,461,963	19,004,123	18,572,058
Other Deposits	0	0	0	0
Restricted Reserves	18,781	18,781	18,781	18,781
Foreign Liabilities	20,681,580	20,807,811	20,664,063	20,664,283
Liabilities to General Government	4,526,263	5,371,718	4,134,950	4,278,534
Capital Accounts	17,546,639	17,489,523	17,260,920	17,170,808
Unclassified Liabilities	10,782,309	10,851,383	10,789,427	10,820,826
Total Liabilities	71,258,100	72,001,178	71,872,264	71,525,290
Vertical Check (Assets/Liabilities)	0	0	0	0

*Revised

NBFIs: Non-Bank Financial Institutions

Source : Central Bank of Liberia, Monrovia, Liberia.

MONEY AND BANKING

CENTRAL BANK OF LIBERIA

1.4b: Commercial Banks' Loans By Economic Sector - 2009*Thousands of Liberian Dollars*

Sector	Jan-09		Feb-09		Mar-09		Apr-09		May-09		Jun-09	
	L\$	%	L\$	%	L\$	%	L\$	%	L\$	%	L\$	%
1. Agriculture	296,956	4.6	196,392	3.0	226,159	3.5	317,207	4.6	281,164	3.5	273,695	3.4
1.1 Rubber	80,729	1.3	79,439	1.2	75,916	1.2	142,975	2.1	66,596	0.8	65,918	0.8
1.2 Forestry	69,467	1.1	54,503	0.8	57,124	0.9	47,747	0.7	54,567	0.7	56,471	0.7
1.3 Fishery	12,255	0.2	16,641	0.3	49,676	0.8	53,333	0.8	71,205	0.9	61,547	0.8
1.4 Others	134,506	2.1	45,810	0.7	43,444	0.7	73,152	1.1	88,796	1.1	89,761	1.1
2. Mining & Quarrying	23,265	0.4	18,105	0.3	16,075	0.2	13,412	0.2	14,219	0.2	13,583	0.2
2.1 Iron Ore	0.0	0.0	0.0	0.0	0.0	0.0	0.0	0.0	0.0	0.0	0.0	0.0
2.2 Quarrying	23,265	0.4	18,105	0.3	16,075	0.2	13,412	0.2	14,219	0.2	13,583	0.2
3. Manufacturing	178,592	2.8	158,162	2.4	158,471	2.4	216,975	3.1	189,118	2.4	179,484	2.2
4. Construction	568,031	8.9	610,270	9.4	624,167	9.5	714,339	10.3	771,444	9.7	808,561	10.0
4.1 Mortgage Loans	11,353	0.2	13,196	0.2	9,664	0.1	29,473	0.4	12,808	0.2	12,025	0.1
4.2 Home Improvement	13,094	0.2	11,933	0.2	10,374	0.2	9,111	0.1	8,390	0.1	7,050	0.1
4.3 Others	543,584	8.5	585,142	9.0	604,129	9.2	675,755	9.7	750,247	9.4	789,487	9.8
5. Trans., Storage & Comm.	773,082	12.1	749,802	11.6	736,974	11.3	788,468	11.3	1,040,576	13.1	1,023,889	12.7
5.1 Transportation	669,199	10.5	629,604	9.7	605,968	9.3	671,601	9.7	777,416	9.8	805,521	10.0
5.2 Storage	0.0	0.0	0.0	0.0	0.0	0.0	33.3	0.0	35.3	0.0	0.0	0.0
5.3 Communication	103,883	1.6	120,198	1.9	131,006	2.0	116,834	1.7	263,125	3.3	218,369	2.7
6. Trade, Hotel & Rest.	1,904,129	29.7	2,136,710	33.0	2,158,625	33.0	2,234,342	32.1	2,640,360	33.2	2,734,968	33.9
6.1 Diamond trade	8,708	0.1	9,159	0.1	6,318	0.1	6,783	0.1	8,531	0.1	8,319	0.1
6.2 Other trade	1,681,815	26.3	1,914,599	29.6	1,926,661	29.4	2,015,575	29.0	2,397,581	30.2	2,505,048	31.1
6.3 Hotels	186,701	2.9	184,969	2.9	197,097	3.0	176,875	2.5	192,518	2.4	179,266	2.2
6.4 Restaurants	26,906	0.4	27,984	0.4	28,550	0.4	35,110	0.5	41,731	0.5	42,336	0.5
7. Others	2,658,474	41.5	2,597,664	40.2	2,623,640	40.1	2,666,579	38.4	3,012,688	37.9	3,026,985	37.6
7.1 Services	1,121,277	17.5	954,603	14.8	1,356,320	20.7	1,530,105	22.0	1,708,208	21.5	1,673,736	20.8
7.2 Personal	601,617	9.4	730,130	11.3	1,062,578	16.2	879,340	12.6	923,813	11.6	936,242	11.6
7.3 GOL	65,871	1.0	68,840	1.1	71,527	1.1	69,045	1.0	73,197	0.9	73,550	0.9
7.4 Central Bank of Liberia	0	0.0	0	0.0	0	0.0	0	0.0	0.0	0.0	0.0	0.0
7.5 Public Corporations	18,938	0.3	19,070	0.3	16,762	0.3	60,804	0.9	81,988	1.0	81,353	1.0
7.6 Others	850,772	13.3	825,021	12.8	116,454	1.8	127,286	1.8	225,483	2.8	262,105	3.3
TOTAL	6,402,528	100.0	6,467,103	100.0	6,544,110	100.0	6,951,320	100.0	7,949,567	100.0	8,061,164	100.0

Source : Central Bank of Liberia, Monrovia, Liberia.

MONEY AND BANKING

CENTRAL BANK OF LIBERIA

1.4b: Commercial Banks' Loans By Economic Sector-2009 - continued

Thousands of Liberian Dollars

Sector	Jul-09		Aug-09		Sep-09		Oct-09		Nov-09		Dec-09	
	L\$	%	L\$	%	L\$	%	L\$	%	L\$	%	L\$	%
1. Agriculture	312,219	3.7	317,171	3.6	298,921	3.3	319,045	3.5	290,496	3.2	329,172	3.4
1.1 Rubber	66,010	0.8	66,959	0.8	77,112	0.8	160,057	1.8	70,416	0.8	74,730	0.8
1.2 Forestry	56,683	0.7	57,565	0.7	48,528	0.5	48,011	0.5	132,667	1.5	49,773	0.5
1.3 Fishery	80,288	1.0	106,140	1.2	102,024	1.1	86,574	1.0	65,678	0.7	72,897	0.8
1.4 Others	109,238	1.3	86,507	1.0	71,257	0.8	24,404	0.3	21,735	0.2	131,772	1.4
2. Mining & Quarrying	5,863	0.1	3,029	0.0	130	0.0	7,251	0.1	13,089	0.1	13,879	0.1
2.1 Iron Ore	0.0	0.0	0.0	0.0	0.0	0.0	7,120.5	0.1	12,960.0	0.1	13,747.5	0.1
2.2 Quarrying	5,863	0.1	3,029	0.0	130	0.0	131	0.0	129	0.0	132	0.0
3. Manufacturing	172,575	2.1	171,162	2.0	151,066	1.7	147,106	1.6	140,674	1.6	164,012	1.7
4. Construction	968,369	11.6	1,001,060	11.5	1,029,910	11.3	1,034,068	11.4	988,130	11.0	1,087,512	11.4
4.1 Mortgage Loans	11,518	0.1	7,983	0.1	7,145	0.1	6,708	0.1	5,096	0.1	5,288	0.1
4.2 Home Improvement	12,269	0.1	10,078	0.1	12,600	0.1	15,158	0.2	8,033	0.1	38,775	0.4
4.3 Others	944,582	11.3	982,999	11.3	1,010,165	11.1	1,012,202	11.2	975,001	10.8	1,043,449	10.9
5. Trans., Storage & Comm.	1,049,745	12.6	1,091,930	12.5	1,201,936	13.2	1,144,129	12.6	1,298,577	14.4	1,331,454	13.9
5.1 Transportation	766,265	9.2	773,069	8.9	792,358	8.7	729,344	8.0	883,239	9.8	922,100	9.6
5.2 Storage	35.9	0.0	0.0	0.0	0.0	0.0	0.0	0.0	33.8	0.0	0.0	0.0
5.3 Communication	283,444	3.4	318,862	3.7	409,578	4.5	414,786	4.6	415,305	4.6	409,354	4.3
6. Trade, Hotel & Rest.	2,604,255	31.2	2,684,599	30.8	2,847,581	31.4	2,930,667	32.3	2,870,569	31.9	3,066,187	32.0
6.1 Diamond trade	7,821	0.1	8,483	0.1	8,712	0.1	8,460	0.1	7,830	0.1	9,659	0.1
6.2 Other trade	2,358,549	28.3	2,388,044	27.4	2,495,067	27.5	2,573,135	28.4	2,567,494	28.5	2,731,172	28.5
6.3 Hotels	211,628	2.5	263,794	3.0	311,658	3.4	303,829	3.3	255,466	2.8	278,169	2.9
6.4 Restaurants	26,258	0.3	24,279	0.3	32,144	0.4	45,244	0.5	39,779	0.4	47,189	0.5
7. Others	3,231,291	38.7	3,440,321	39.5	3,548,123	39.1	3,489,729	38.5	3,403,823	37.8	3,576,517	37.4
7.1 Services	1,882,741	22.6	2,123,571	24.4	2,060,618	22.7	1,987,169	21.9	1,887,344	21.0	1,962,504	20.5
7.2 Personal	965,498	11.6	898,202	10.3	1,069,802	11.8	1,106,052	12.2	1,104,715	12.3	1,175,685	12.3
7.3 GOL	74,501	0.9	75,280	0.9	74,762	0.8	73,206	0.8	70,093	0.8	73,207	0.8
7.4 Central Bank of Liberia	0.0	0.0	0.0	0.0	0.0	0.0	0.0	0.0	0.0	0.0	0.0	0.0
7.5 Public Corporations	98,676	1.2	110,046	1.3	76,762	0.8	47,374	0.5	25,026	0.3	23,200	0.2
7.6 Others	209,875	2.5	233,223	2.7	266,179	2.9	275,929	3.0	316,645	3.5	341,921	3.6
TOTAL	8,344,316	100.0	8,709,271	100.0	9,077,667	100.0	9,071,995	100.0	9,005,355	100.0	9,568,732	100.0

Source : Central Bank of Liberia, Monrovia, Liberia.

MONEY AND BANKING

CENTRAL BANK OF LIBERIA

1.4c: Commercial Banks' Loans By Economic Sector- 2010

Thousands of Liberian Dollars

Sector	Jan-10		Feb-10		Mar-10		Apr-10		May-10		Jun-10	
	L\$	%	L\$	%	L\$	%	L\$	%	L\$	%	L\$	%
1. Agriculture	54,527	7.8	61,299	8.3	368,963	3.6	313,667	3.1	293,622	2.9	346,084	3.3
1.1 Rubber	-	-	-	-	104,176	1.0	71,858	0.7	72,215	0.7	73,551	0.7
1.2 Forestry	13,824	2.0	13,824	1.9	46,776	0.5	68,835	0.7	66,234	0.6	63,870	0.6
1.3 Fishery	-	-	-	6.5	82,644	0.8	66,209	0.7	70,499	0.7	70,372	0.7
1.4 Others	40,703	5.8	47,475	-	135,368	1.3	106,766	1.0	84,674	0.8	138,292	1.3
2. Mining & Quarrying	65	0.0	67	0.0	570	0.0	26,026	0.3	25,456	0.2	18,572	0.2
2.1 Iron Ore	0.0	0.0	0.0	0.0	429.0	0.0	25,740.0	0.3	25,096.5	0.2	16,400.8	0.2
2.2 Quarrying	65	0.0	67	0.1	141	0.0	286	0.0	359	0.0	2,171	0.0
3. Manufacturing	4,705	0.7	785	0.0	144,626	1.4	175,687	1.7	171,908	1.7	381,308	3.7
4. Construction	4,068	0.6	4,728	0.6	1,056,813	10.3	988,629	9.7	1,590,828	15.6	929,904	9.0
4.1 Mortgage Loans	-	0.0	-	0.0	-	0.0	-	0.0	669,097	6.6	-	0.0
4.2 Home Improvement	-	0.0	-	0.0	39,754	0.4	39,325	0.4	46,976	0.5	46,746	0.5
4.3 Others	4,068	0.6	4,728	0.6	1,017,059	9.9	949,304	9.3	874,755	8.6	883,159	8.5
5. Trans., Storage & Comm.	4,957	0.7	5,376	0.7	1,656,603	16.2	1,608,718	15.8	1,616,504	15.8	1,760,489	17.0
5.1 Transportation	1,728	0.2	2,141	0.3	927,850	9.0	882,248	8.7	925,059	9.1	969,047	9.4
5.2 Storage	0.0	0.0	0.0	0.0	0.0	0.0	0.0	0.0	0.0	0.0	0.0	0.0
5.3 Communication	3,229	0.5	3,235	0.4	728,753	7.1	726,471	7.1	691,445	6.8	791,442	7.6
6. Trade, Hotel & Rest.	266,643	38.0	287,040	39.0	3,035,559	29.6	3,027,744	29.7	2,974,278	29.2	2,918,583	28.2
6.1 Diamond trade	0	0.0	0	0.0	10,582	0.1	10,582	0.1	11,726	0.1	12,788	0.1
6.2 Other trade	265,023	37.8	284,912	38.7	2,719,935	26.5	2,727,535	26.8	2,693,191	26.4	2,622,629	25.3
6.3 Hotels	50	0.0	52	0.0	259,385	2.5	248,590	2.4	221,209	2.2	238,631	2.3
6.4 Restaurants	1,570	0.2	2,076	0.3	45,658	0.4	41,037	0.4	48,153	0.5	44,536	0.4
7. Others	366,420	52.2	376,137	51.1	3,989,446	38.9	4,037,635	39.7	3,527,205	34.6	3,999,394	38.6
7.1 Services	323,402	46.1	295,156	40.1	1,723,155	16.8	1,872,670	18.4	1,336,219	13.1	1,255,594	12.1
7.2 Personal	42,222	6.0	80,238	10.9	1,816,770	17.7	1,733,079	17.0	1,700,096	16.7	2,238,356	21.6
7.3 GOL	45	0.0	31	0.0	67,243	0.7	67,244	0.7	67,246	0.7	67,952	0.7
7.4 Central Bank of Liberia	0	0.0	0	0.0	0	0.0	0	0.0	0	0.0	0	0.0
7.5 Public Corporations	5	0.0	5	0.0	90,024	0.9	64,212	0.6	76,582	0.8	73,122	0.7
7.6 Others	746	0.1	707	0.1	292,255	2.9	300,430	3.0	347,063	3.4	364,370	3.5
TOTAL	701,385	100.0	735,432	100.0	10,252,578	100.0	10,178,104	100.0	10,199,798.30	100	10,354,334.66	100

Source: Central Bank of Liberia, Monrovia, Liberia.

MONEY AND BANKING

CENTRAL BANK OF LIBERIA

1.4c: Commercial Banks' Loans By Economic Sector- 2010 (continued)

Thousands of Liberian Dollars

Sector	Jul-10		Aug-10		Sep-10		Oct-10		Nov-10		Dec-10	
	L\$	%	L\$	%	L\$	%	L\$	%	L\$	%	L\$	%
1. Agriculture	341,883	3.1	305,489	2.8	307,948	2.6	389,493	3.1	383,000	3.0	398,250	3.2
1.1 Rubber	72,718	0.7	94,614	0.9	157,704	1.3	104,368	0.8	140,833	1.1	105,244	0.8
1.2 Forestry	64,851	0.6	55,970	0.5	40,605	0.3	98,035	0.8	60,419	0.5	78,749	0.6
1.3 Fishery	73,370	0.7	68,223	0.6	68,440	0.6	136,827	1.1	129,268	1.0	145,360	1.2
1.4 Others	130,945	1.2	86,683	0.8	41,199	0.3	50,262	0.4	52,482	0.4	68,897	0.5
2. Mining & Quarrying	25,671	0.2	41,477	0.4	56,557	0.5	2,160	0.0	71,390	0.6	2,085	0.0
2.1 Iron Ore	23,562.5	0.2	26,752.5	0.2	54,375.0	0.5	0.0	0.0	67,135.0	0.5	0.0	0.0
2.2 Quarrying	2,108	0.0	14,725	0.1	2,182	0.0	2,160	0.0	4,255	0.0	2,085	0.0
3. Manufacturing	391,019	3.6	146,130	1.4	162,587	1.4	146,684	1.2	155,772	1.2	162,694	1.3
4. Construction	1,155,840	10.5	638,354	5.9	1,047,493	8.7	1,098,051	8.7	1,115,678	8.8	1,215,416	9.6
4.1 Mortgage Loans	-	0.0	4,858	0.0	101,500	0.8	107,625	0.9	108,750	0.9	117,975	0.9
4.2 Home Improvement	48,430	0.4	48,793	0.5	305,466	2.5	302,626	2.4	303,395	2.4	387,730	3.1
4.3 Others	1,107,410	10.1	584,704	5.4	640,527	5.3	687,799	5.5	703,533	5.6	709,711	5.6
5. Trans., Storage & Comm.	1,845,753	16.8	1,188,979	11.0	2,272,817	18.9	2,812,529	22.3	2,865,432	22.6	2,823,580	22.4
5.1 Transportation	979,797	8.9	609,647	5.7	1,646,833	13.7	2,076,113	16.5	2,117,720	16.7	2,079,639	16.5
5.2 Storage	21,460.0	0.2	29,362.5	0.3	0.0	0.0	0.0	0.0	0.0	0.0	0.0	0.0
5.3 Communication	844,496	7.7	549,970	5.1	625,984	5.2	736,416	5.8	747,712	5.9	743,941	5.9
6. Trade, Hotel & Rest.	3,039,430	27.7	3,527,271	32.7	4,243,437	35.3	3,891,141	30.9	3,988,145	31.5	3,977,725	31.5
6.1 Diamond trade	182,265	1.7	12,978	0.1	13,630	0.1	13,633	0.1	239,178	1.9	13,800	0.1
6.2 Other trade	2,572,169	23.4	3,313,106	30.8	3,962,148	32.9	3,603,644	28.6	3,475,871	27.5	3,653,619	28.9
6.3 Hotels	235,472	2.1	184,150	1.7	249,930	2.1	257,102	2.0	256,020	2.0	292,743	2.3
6.4 Restaurants	49,525	0.5	17,038	0.2	17,730	0.1	16,763	0.1	17,077	0.1	17,564	0.1
7. Others	4,184,604	38.1	4,926,222	45.7	3,936,875	32.7	4,256,751	33.8	4,083,055	32.2	4,043,743	32.0
7.1 Services	1,354,477	12.3	1,469,538	13.6	1,405,048	11.7	1,438,534	11.4	1,382,090	10.9	1,321,596	10.5
7.2 Personal	2,431,660	22.1	3,198,222	29.7	2,338,875	19.4	2,569,536	20.4	2,527,860	20.0	2,478,783	19.6
7.3 GOL	68,189	0.6	68,150	0.6	68,150	0.6	67,445	0.5	68,150	0.5	67,210	0.5
7.4 Central Bank of Liberia	0	0.0	0	0.0	0	0.0	0	0.0	0	0.0	0	0.0
7.5 Public Corporations	18,855	0.2	-	0.0	943	0.0	72	0.0	73	0.0	72	0.0
7.6 Others	311,423	2.8	190,313	1.8	123,860	1.0	181,164	1.4	104,883	0.8	176,083	1.4
TOTAL	10,984,198.20	100	10,773,920.88	100	12,027,713.00	100	12,596,808.22	100	12,662,470.50	100	12,623,491.04	100

Source: Central Bank of Liberia, Monrovia, Liberia.

MONEY AND BANKING

CENTRAL BANK OF LIBERIA

L4c: Commercial Banks' Loans By Economic Sector - 2011

Thousands of Liberian Dollars

Sector	Jan-11		Feb-11		Mar-11		Apr-11		May-11		Jun-11	
	L\$	%	L\$	%	L\$	%	L\$	%	L\$	%	L\$	%
1. Agriculture	463,032	3.5	515,489	3.8	547,500	4.0	464,411	3.3	488,592.0	3.4	517,277.0	3.6
1.1 Rubber	123,505	0.9	128,202	0.9	146,961	1.1	118,473	0.8	126,425.0	0.9	98,113.0	0.7
1.2 Forestry	102,476	0.8	116,021	0.9	151,503	1.1	131,393	0.9	127,195.0	0.9	164,424.0	1.1
1.3 Fishery	136,228	1.0	165,525	1.2	128,592	0.9	126,658	0.9	151,742.5	1.1	167,462.0	1.2
1.4 Others	100,824	0.8	105,741	0.8	120,444	0.9	87,889	0.6	83,229.5	0.6	87,278.0	0.6
2. Mining & Quarrying	2,766	0.0	12,944	0.1	53,003	0.4	55,395	0.4	56,265.0	0.4	49,061.0	0.3
2.1 Iron Ore	-	-	-	-	-	-	-	-	-	-	1,173.0	0.0
2.2 Quarrying	2,766	0.0	12,944	0.1	53,003	0.4	55,395	0.4	56,265.0	0.4	47,888.0	0.3
3. Manufacturing	762,040	5.8	186,317	1.4	202,008	1.5	351,600	2.5	352,759.5	2.5	305,190.0	2.1
4. Construction	1,391,797	10.6	1,423,017	10.5	1,540,369	11.2	1,471,530	10.5	1,518,132.0	10.7	1,585,257.0	11.1
4.1 Mortgage Loans	178,278	1.4	202,300	1.5	213,624	1.6	215,108	1.5	214,310.0	1.5	141,985.0	1.0
4.2 Home Improvement	429,328	3.3	421,288	3.1	424,128	3.1	499,503	3.6	497,110.0	3.5	349,723.0	2.4
4.3 Others	784,192	5.9	799,429	5.9	902,617	6.6	756,920	5.4	806,712.0	5.7	1,093,549.0	7.6
5. Trans., Storage & Comm.	3,009,794	22.8	1,960,634	14.5	1,957,403	14.2	1,435,831	10.2	1,396,654.0	9.8	1,457,491.0	10.2
5.1 Transportation	2,157,175	16.4	1,088,765	8.0	1,091,462	7.9	712,772	5.1	715,282.5	5.0	703,656.0	4.9
5.2 Storage	0.0	0.0	0.0	0.0	0.0	0.0	0.0	0.0	-	-	-	-
5.3 Communication	852,619	6.5	871,869	6.4	865,941	6.3	723,059	5.2	681,371.5	4.8	753,835.0	5.3
6. Trade, Hotel & Rest.	4,079,018	30.9	5,196,721	38.3	5,198,610	37.8	5,733,106	40.9	5,880,258.0	41.3	5,679,708.0	39.6
6.1 Diamond trade	14,718	0.1	14,739	0.1	24,552	0.2	19,793	0.1	19,502.5	0.1	20,732.0	0.1
6.2 Other trade	3,747,631	28.4	4,863,513	35.9	4,838,041	35.2	5,301,089	37.8	5,461,219.0	38.4	5,263,696.0	36.7
6.3 Hotels	298,650	2.3	299,498	2.2	315,958	2.3	391,595	2.8	378,617.0	2.7	374,950.0	2.6
6.4 Restaurants	18,020	0.1	18,971	0.1	20,059	0.1	20,630	0.1	20,919.5	0.1	20,330.0	0.1
7. Others	3,479,460	26.4	4,269,326	31.5	4,258,280	31.0	4,513,330	32.2	4,542,854.7	31.9	4,741,943.6	33.1
7.1 Services	1,252,654	9.5	1,020,960	7.5	1,483,391	10.8	1,053,793	7.5	1,038,859.0	7.3	1,066,688.0	7.4
7.2 Personal	1,939,409	14.7	3,012,698	22.2	2,586,914	18.8	3,036,923	21.7	3,087,295.0	21.7	3,254,737.0	22.7
7.3 GOL	92,016	0.7	67,924	0.5	67,693	0.5	68,161	0.5	68,150.0	0.5	68,912.0	0.5
7.4 Central Bank of Liberia	0	0.0	-	0.0	0	0.0	-	0.0	-	-	-	-
7.5 Public Corporations	-	0.0	-	0.0	-	0.0	171,028	1.2	170,955.0	1.2	179,288.0	1.3
7.6 Others	195,381	1.5	167,744	1.2	120,282	0.9	183,426	1.3	177,595.7	1.2	172,318.6	1.2
TOTAL	13,187,905.05	100	13,564,446.09	100	13,757,173.28	100	14,025,201.40	100	14,235,515	100	14,335,928	100.0

Source : Central Bank of Liberia, Monrovia, Liberia.

MONEY AND BANKING

CENTRAL BANK OF LIBERIA

1.4c: Commercial Banks' Loans By Economic Sector - 2011- Continued*Thousands of Liberian Dollars*

Sector	Jul-11		Aug-11		Sep-11		Oct-11	
	L\$	%	L\$	%	L\$	%	L\$	%
1. Agriculture	527,459.0	3.7	523,661.5	3.6	514,759	3.4	497,098	3.3
1.1 Rubber	96,905.0	0.7	135,535.0	0.9	97,401	0.7	99,273	0.7
1.2 Forestry	202,305.0	1.4	134,735.0	0.9	141,152	0.9	166,747	1.1
1.3 Fishery	152,250.0	1.1	126,802.5	0.9	200,736	1.3	66,456	0.4
1.4 Others	75,999.0	0.5	126,589.0	0.9	75,470	0.5	164,622	1.1
2. Mining & Quarrying	54,960.0	0.4	36,037.5	0.2	66,965	0.4	127,445	0.8
2.1 Iron Ore	5.00	0.00	-	-	-	-	-	-
2.2 Quarrying	54,955.0	0.4	36,037.5	0.2	66,965	0.4	127,445	0.8
3. Manufacturing	303,389.5	2.1	310,010.0	2.1	259,416	1.7	271,008	1.8
4. Construction	1,585,843.0	11.2	1,304,518.0	8.8	1,312,594	8.8	1,361,221	8.9
4.1 Mortgage Loans	142,100.0	1.0	103,240.0	0.7	96,408	0.6	92,304	0.6
4.2 Home Improvement	345,440.0	2.4	124,822.5	0.8	99,576	0.7	90,811	0.6
4.3 Others	1,098,303.0	7.8	1,076,455.5	7.3	1,116,610	7.5	1,178,106	7.7
5. Trans., Storage & Comm.	1,769,227.5	12.5	1,359,086.5	9.2	1,322,107	8.8	1,304,508	8.6
5.1 Transportation	1,022,968.5	7.2	666,562.5	4.5	654,054	4.4	629,183	4.1
5.2 Storage	-	-	-	-	-	-	-	-
5.3 Communication	746,259.0	5.3	692,524.0	4.7	668,053	4.5	675,325	4.4
6. Trade, Hotel & Rest.	5,104,382.0	36.1	5,651,218.5	38.3	5,918,395	39.6	6,231,715	40.9
6.1 Diamond trade	20,952.5	0.1	21,170.0	0.1	22,176	0.1	21,240	0.1
6.2 Other trade	4,687,663.0	33.1	5,281,419.0	35.8	5,559,882	37.2	5,899,914	38.7
6.3 Hotels	374,702.0	2.6	327,120.0	2.2	314,928	2.1	289,368	1.9
6.4 Restaurants	21,064.5	0.1	21,509.5	0.1	21,409	0.1	21,193	0.1
7. Others	4,808,624.6	34.0	5,560,386.0	37.7	5,554,867	37.2	5,454,420	35.8
7.1 Services	2,269,755.0	16.0	2,520,389.1	17.1	2,507,723	16.8	2,587,916	17.0
7.2 Personal	2,112,392.5	14.9	2,225,892.5	15.1	2,326,209	15.6	2,277,777	14.9
7.3 GOL	68,440.0	0.5	58,580.0	0.4	57,528	0.4	57,528	0.4
7.4 Central Bank of Liberia	-	-	-	-	-	-	0	0.0
7.5 Public Corporations	178,060.0	1.3	347,884.0	2.4	346,634	2.3	337,098	2.2
7.6 Others	179,977.0	1.3	407,640.4	2.8	316,773	2.1	194,101	1.3
TOTAL	14,153,886	100	14,744,918	100.0	14,949,103	100	15,247,415	100

Source : Central Bank of Liberia, Monrovia, Liberia.

MONEY AND BANKING

CENTRAL BANK OF LIBERIA

1.5a: Commercial Banks' Interest Rates: 2009

	Jan-09	Feb-09	Mar-09	Apr-09	May-09	Jun-09
Average Lending Rate	14.10	14.30	14.00	14.30	14.20	14.20
Average Personal Loan Rate	14.74	14.78	14.59	14.59	14.60	14.63
Average Mortgage Rate	14.00	14.00	14.00	14.00	14.00	14.49
Average Time Deposit Rate	3.80	3.90	3.60	4.30	4.30	4.30
Average Savings Rate	2.11	2.10	2.10	2.10	2.00	2.00
Average Rate on CDs	3.00	3.00	3.00	3.00	3.00	3.00

	Jul-09	Aug-09	Sep-09	Oct-09	Nov-09	Dec-09
Average Lending Rate	14.10	14.20	14.22	14.28	14.24	14.10
Average Personal Loan Rate	14.41	15.04	14.67	14.72	14.66	14.49
Average Mortgage Rate	14.00	14.48	14.42	14.48	14.60	14.45
Average Time Deposit Rate	4.10	4.20	4.20	4.20	4.10	4.30
Average Savings Rate	2.00	2.00	2.00	2.00	2.00	2.00
Average Rate on CDs	3.00	3.00	3.00	3.00	3.00	3.00

Note: CDs-Certificate of Deposits

Source : Central Bank of Liberia, Monrovia, Liberia.

MONEY AND BANKING

CENTRAL BANK OF LIBERIA

1.5b: Commercial Banks' Interest Rates: 2010-2011

	Jan-10	Feb-10	March-10	April-10	May-10	Jun-10
Average Lending Rate	14.10	14.16	14.17	14.23	14.58	14.17
Average Personal Loan Rate	14.46	14.54	14.46	14.53	14.48	14.45
Average Mortgage Rate	14.50	14.00	14.47	14.50	14.31	14.28
Average Time Deposit Rate	4.30	4.20	3.90	4.00	4.00	4.20
Average Savings Rate	2.00	2.00	2.00	2.00	2.01	2.19
Average Rate on CDs	3.00	3.00	3.00	3.00	3.00	3.00

	Jul-10	Aug-10	Sep-10	Oct-10	Nov-10	Dec-10
Average Lending Rate	14.34	14.15	14.40	14.27	14.17	14.17
Average Personal Loan Rate	14.38	13.65	14.42	14.51	14.12	14.15
Average Mortgage Rate	14.32	14.00	14.28	14.27	14.23	14.19
Average Time Deposit Rate	4.10	3.00	2.90	2.50	2.50	2.90
Average Savings Rate	2.21	2.44	2.00	2.00	2.00	2.01
Average Rate on CDs	3.00	3.00	3.00	3.00	3.00	3.00

	Jan-11	Feb-11	Mar-11	Apr-11	May-11	Jun-11	Jul-11	Aug-11
Average Lending Rate	14.62	13.52	13.39	13.50	13.53	13.64	13.47	13.80
Average Personal Loan Rate	15.38	15.38	15.17	14.60	10.10	14.68	10.99	14.52
Average Mortgage Rate	14.00	12.47	12.47	14.66	14.63	15.00	14.73	14.71
Average Time Deposit Rate	2.90	3.30	2.60	2.50	2.90	2.90	3.10	3.20
Average Savings Rate	2.01	2.02	2.02	2.01	2.08	2.01	2.01	2.01
Average Rate on CDs	3.00	3.00	3.00	2.00	3.00	2.50	2.50	3.00

	Jul-11	Aug-11	Sep-11	Oct-11
Average Lending Rate	13.47	13.80	13.80	14.01
Average Personal Loan Rate	10.99	14.52	14.44	10.74
Average Mortgage Rate	14.73	14.71	15.00	14.86
Average Time Deposit Rate	3.10	3.20	2.70	3.30
Average Savings Rate	2.01	2.01	2.01	2.10
Average Rate on CDs	2.50	3.00	3.00	3.00

Note: CDs-Certificate of Deposits

Source : Central Bank of Liberia, Monrovia, Liberia.

MONEY AND BANKING

CENTRAL BANK OF LIBERIA

1.6a: Liberian Dollar Exchange Rates - Period Averages: 2009 - 2010

(Liberian dollar per US dollar)

Period	Large bills ¹		
	Buy	Sell	Middle ²
2009			
Jan	63.94	64.93	64.44
Feb	64.00	65.00	64.50
Mar	64.50	65.35	64.92
Apr	65.60	66.23	65.91
May	67.46	68.37	67.91
Jun	69.34	70.30	69.82
Jul	70.61	71.59	71.75
Aug	71.67	72.75	72.21
Sep	71.35	72.44	71.89
Oct	70.59	71.56	71.07
Nov	67.36	68.36	67.86
Dec	67.31	68.31	67.81
Quarter 1	64.15	65.09	64.62
Quarter 2	67.47	68.30	67.88
Quarter 3	71.21	72.26	71.95
Quarter 4	68.42	69.41	68.91
Period	Large bills ¹		
2010	Buy	Sell	Middle ²
Jan	70.83	71.83	71.33
Feb	71.25	72.31	71.78
March	71.09	72.09	71.59
April	70.21	71.21	70.71
May	70.58	71.58	71.08
June	71.19	72.15	71.67
July	71.81	72.76	72.29
Aug	72.00	73.00	72.50
Sep	71.35	72.35	71.85
Oct	71.50	72.54	72.02
Nov	69.35	70.31	69.83
Dec	69.72	70.67	70.19
Quarter 1	71.06	72.08	71.57
Quarter 2	70.66	71.65	71.15
Quarter 3	71.72	72.70	72.21
Quarter 4	70.19	71.17	70.68

² Average of buying and selling rates.

Source : Central Bank of Liberia, Monrovia, Liberia.

MONEY AND BANKING

CENTRAL BANK OF LIBERIA

1.6b: Liberian Dollar Exchange Rates - Period Averages: 2011

(Liberian dollar per US dollar)

Period 2011	Large bills ¹		
	Buy	Sell	Middle ²
Jan	71.79	72.75	72.27
Feb	71.96	72.60	72.28
Mar	71.61	72.31	71.96
Apr	71.54	72.21	71.88
May	72.00	72.98	72.49
Jun	72.10	73.10	72.60
Jul	72.35	73.33	72.84
Aug	72.02	73.00	72.51
Sep	71.58	72.58	72.08
Oct	71.88	72.69	72.29
Quarter 1	71.79	72.55	72.17
Quarter 2	71.88	72.76	72.32
Quarter 3	71.98	72.97	72.48

²Average of buying and selling rates.

Source : Central Bank of Liberia, Monrovia, Liberia.

MONEY AND BANKING

CENTRAL BANK OF LIBERIA

1.7: Liberian Dollar Exchange Rates - End of Period: 2009 - 2011
(Liberian dollars per US dollar)

Months	2009	2010	2011
Jan	64.50	72.00	72.50
Feb	64.50	72.50	72.25
Mar	65.50	71.50	72.00
Apr	66.50	71.50	72.50
May	70.50	71.50	72.50
Jun	70.50	72.25	73.00
Jul	71.75	72.50	72.50
Aug	72.50	72.50	72.50
Sep	72.00	72.50	72.00
Oct	70.50	71.75	72.00
Nov	67.50	69.50	
Dec	70.50	71.75	

Source : Central Bank of Liberia, Monrovia, Liberia.

MONEY AND BANKING

CENTRAL BANK OF LIBERIA

1.8: Liberian Dollar Exchange Rates September-October, 2011
(Liberian dollar per US dollar)

Period	Large bills ¹			Period	Large bills ¹		
	Buy	Sell	Middle ²		Buy	Sell	Middle ²
Sep				Oct			
1	72.00	73.00	72.50	1	71.50	72.50	72.00
2	72.00	73.00	72.50	3	72.00	72.50	72.25
3	72.00	73.00	72.50	4	72.00	72.50	72.25
5	72.00	73.00	72.50	5	72.00	72.50	72.25
6	71.50	72.50	72.00	6	72.00	72.50	72.25
7	71.50	72.50	72.00	7	72.00	72.50	72.25
8	71.50	72.50	72.00	8	72.00	72.50	72.25
9	71.50	72.50	72.00	10	72.00	72.50	72.25
10	71.50	72.50	72.00	11	72.00	72.50	72.25
12	71.50	72.50	72.00	12	72.00	72.50	72.25
13	71.50	72.50	72.00	13	72.00	72.50	72.25
14	71.50	72.50	72.00	14	72.00	73.00	72.50
15	71.50	72.50	72.00	15	72.00	73.00	72.50
16	71.50	72.50	72.00	17	72.00	73.00	72.50
17	71.50	72.50	72.00	18	72.00	73.00	72.50
19	71.50	72.50	72.00	19	72.00	73.00	72.50
20	71.50	72.50	72.00	20	72.00	73.00	72.50
21	71.50	72.50	72.00	21	72.00	73.00	72.50
22	71.50	72.50	72.00	22	72.00	73.00	72.50
23	71.50	72.50	72.00	24	72.00	73.00	72.50
24	71.50	72.50	72.00	25	72.00	73.00	72.50
26	71.50	72.50	72.00	26	71.50	72.50	72.00
27	71.50	72.50	72.00	27	71.50	72.50	72.00
28	71.50	72.50	72.00	28	71.50	72.50	72.00
29	71.50	72.50	72.00	29	71.50	72.50	72.00
30	71.50	72.50	72.00	31	71.50	72.50	72.00
Average	71.58	72.58	72.08		71.88	72.69	72.29

1. US dollar bank notes of denominations 5 and higher.

2. Average of buying and selling rates.

Source: Central Bank of Liberia, Monrovia, Liberia.

MONEY AND BANKING

CENTRAL BANK OF LIBERIA

1.9: Commercial Banks' Inflows and Outflows: 2009 - October, 2011

(Thousands of United States Dollars)

Commercial Banks' Inflows and Outflows - 2009

	Jan-09	Feb-09	Mar-09	Apr-09	May-09	Jun-09	Jan-Jun Total
Inflows	69,304	61,894	71,761	75,140	70,308	57,940	406,347
Outflows	79,193	68,248	72,458	66,581	67,114	63,878	417,472

	Jul-09	Aug-09	Sep-09	Oct-09	Nov-09	Dec-09	Jul-Dec Total	Grand Total
Inflows	56,421	53,494	51,066	71,682	72,322	71,334	376,319	782,666
Outflows	62,019	49,022	66,909	60,000	61,861	72,343	372,154	789,626

Commercial Banks' Inflows and Outflows - 2010

	Jan-10	Feb-10	March-10	April-10	May-10	June-10	Jan-Jun Total
Inflows	76,415	72,640	85,774	81,936	76,878	69,171	462,814
Outflows	52,355	97,548	78,758	76,380	85,615	86,615	477,271

	Jul-10	Aug-10	Sep-10	Oct-10	Nov-10	Dec-10	Jul-Dec Total	Grand Total
Inflows	72,052	86,136	78,694	85,750	80,414	122,317	525,363	988,177
Outflows	92,791	88,455	90,075	75,237	71,786	98,292	516,636	993,907

Commercial Banks' Inflows and Outflows - 2011

	Jan-11	Feb-11	Mar-11	Apr-11	May-11	Jun-11	Jan-Jun Total
Inflows	75,593	104,288	94,972	80,030	137,596	125,148	617,627
Outflows	103,536	110,764	112,269	95,329	134,447	140,751	697,096

	Jul-11	Aug-11	Sep-11	Oct-11
Inflows	73,234	104,986	107,089	146,420
Outflows	101,401	123,631		110,379

Source : Central Bank of Liberia, Monrovia, Liberia.

MONEY AND BANKING

CENTRAL BANK OF LIB.

1.10a Central Bank of Liberia Fx Auction -2009

Auction No.	Date	FX Offered for sale by CBL (US\$)	Auction Rate L\$/US	Total Purchased US\$	No. of Accepted Bids	No. of Rejected Bids	Value of Rejected Bids (US\$)	Over/(Under) Subscription (US\$)	Total Value of Bids Submitted by Banks/FX Bureaux
138	7-Jan-09	500,000	61.98	500,000	14	19	698,182	-770,717	1,270,717
139	14-Jan-09	500,000	61.99	500,000	13	21	705,705	-745,406	1,245,406
140	21-Jan-09	500,000	61.99	500,000	12	21	687,189	-772,144	1,272,144
141	28-Jan-09	500,000	61.93	500,000	11	14	522,148	-527,118	1,027,118
142	4-Feb-09	500,000	61.95	500,000	14	14	861,994	-888,445	1,388,445
143	12-Feb-09	500,000	61.95	500,000	11	15	571,307	-575,657	1,075,657
144	18-Feb-09	500,000	61.96	500,000	13	16	577,342	-595,677	1,095,677
145	25-Feb-09	500,000	61.96	500,000	17	22	949,711	-1,114,391	1,614,391
146	12-Mar-09	500,000	63.25	500,000	12	28	1,088,544	-1,115,544	1,615,544
147	18-Mar-09	500,000	63.89	500,000	12	29	1,146,122	-1,166,261	1,666,261
148	25-Mar-09	500,000	63.98	500,000	15	19	813,050	-861,770	1,361,770
149	1-Apr-09	500,000	64.00	500,000	11	29	1,111,426	-1,131,426	1,631,426
150	8-Apr-09	500,000	64.00	500,000	12	9	249,526	-300,810	800,810
151	15-Apr-09	500,000	64.14	500,000	16	12	418,908	-445,775	945,775
152	22-Apr-09	500,000	64.47	500,000	12	21	848,825	-867,605	1,367,605
153	29-Apr-09	500,000	64.86	500,000	10	41	1,581,554	-1,581,554	2,081,554
154	6-May-09	500,000	65.11	500,000	12	30	1,240,436	-1,240,436	1,740,436
155	13-May-09	500,000	65.21	500,000	10	30	1,257,975	-1,257,975	1,757,975
156	20-May-09	500,000	66.00	500,000	11	35	1,458,877	-1,470,877	1,970,877
157	27-May-09	500,000	68.25	500,000	10	38	2,203,682	-1,203,682	1,703,682
158	3-Jun-09	500,000	69.32	500,000	15	43	1,180,462	-1,180,462	1,680,462
159	10-Jun-09	500,000	68.25	500,000	11	31	1,241,043	-1,241,043	1,741,043
160	17-Jun-09	500,000	69.00	500,000	17	18	645,538	-645,538	1,145,538
161	24-Jun-09	500,000	71.21	500,000	13	20	779,514	-779,514	1,279,514
Total		12,000,000		12,000,000	304	575	22,839,062	-22,479,827	34,479,827

Source : Central Bank of Liberia, Monrovia, Liberia.

MONEY AND BANKING

CENTRAL BANK OF LIBERIA

1.10a Central Bank of Liberia Fx Auction -2009- continued

Auction No.	Date	FX Offered for sale by CBL (US\$)	Auction Rate L\$/US	Total Purchased US\$	No. of Accepted Bids	No. of Rejected Bids	Value of Rejected Bids (US\$)	Over/(Under) Subscription (US\$)	Total Value of Bids Submitted by Participating Banks/C.A. DULCANA (US\$)
162	1-Jul-09	500,000	70.66	500,000	14	22	974,898	(974,898)	1,474,898
163	8-Jul-09	500,000	70.67	500,000	10	20	741,994	(741,994)	1,241,994
164	15-Jul-09	500,000	71.00	500,000	11	23	983,725	(983,725)	1,483,725
165	22-Jul-09	500,000	71.30	500,000	13	15	628,031	(628,031)	1,128,031
166	29-Jul-09	500,000	71.90	500,000	11	15	598,817	(598,817)	1,098,817
167	5-Aug-09	500,000	72.40	500,000	12	15	702,596	(702,596)	1,202,596
168	12-Aug-09	500,000	71.21	500,000	10	12	488,000	(488,000)	988,000
169	19-Aug-09	500,000	71.00	500,000	11	20	863,759	(863,759)	1,363,759
170	26-Aug-09	500,000	71.90	500,000	13	7	433,500	(433,500)	933,500
171	2-Sep-09	500,000.00	72.1199	500,000.00	11	11	479,786.00	(479,786.00)	979,786.00
172	9-Sep-09	500,000.00	70.7500	500,000.00	13	5	339,465.00	(339,465.00)	839,465.00
173	16-Sep-09	500,000.00	71.5010	500,000.00	13	5	267,000.00	(267,000.00)	767,000.00
174	23-Sep-09	500,000.00	71.6010	500,000.00	13	5	228,790.00	(228,790.00)	728,790.00
175	30-Sep-09	500,000.00	71.9090	500,000.00	13	3	219,694.00	(219,694.00)	719,694.00
175	2-Oct-09	500,000.00	71.7090	500,000.00	10	-	-	-	500,000.00
176	7-Oct-09	1,000,000.00	70.1290	839,861.58	15	-	-	160,138.42	839,861.58
176	8-Oct-09	160,138.42	70.1290	160,138.42	3	-	-	-	160,138.42
177	14-Oct-09	1,500,000.00	70.0000	1,161,350.00	15	-	-	338,650.00	1,161,350.00
178	21-Oct-09	1,000,000.00	69.5000	1,000,000.00	12	-	-	-	1,000,000.00
179	28-Oct-09	1,000,000.00	69.5000	700,000.00	12	4	267,685.42	32,314.58	967,685.42
179	29-Oct-09	300,000.00	69.500	300,000.00	4	-	-	-	300,000.00
180	4-Nov-09	1,000,000.00	68.020	1,000,000.00	14	1	15,443.00	(15,443.00)	1,015,443.00
181	11-Nov-09	1,000,000.00	67.000	362,923.00	8	-	-	637,068.00	362,932.00
181	11-Nov-09	425,000.00	67.000	425,000.00	3	-	-	-	425,000.00
182	18-Nov-09	750,000.00	66.999	600,000.00	10	1	15,934.00	134,066.00	615,934.00
182	18-Nov-09	150,000.00	66.999	150,000.00	1	-	-	-	150,000.00
183	25-Nov-09	750,000.00	66.500	575,000.00	8	2	31,834.00	143,166.00	606,834.00
183	25-Nov-09	100,000.00	66.500	100,000.00	1	-	-	-	100,000.00
184	2-Dec-09	750,000.00	65.000	680,934.00	10	-	-	69,066.00	680,934.00
185	9-Dec-09	500,000.00	65.250	500,000.00	11	-	7,700.00	(7,700.00)	507,700.00
186	16-Dec-09	500,000.00	66.500	500,000.00	11	3	187,500.00	(187,500.00)	687,500.00
187	23-Dec-09	1,700,000.00	67.250	1,571,906.00	24	-	-	128,094.00	1,571,906.00
188	30-Dec-09	1,700,000.00	68.000	1,699,624.23	20	2	66,000.00	(65,624.23)	1,765,624.23
Total		21,785,138		19,826,737	360	191	8,542,152	-6,583,700	28,368,838

Source : Central Bank of Liberia, Monrovia, Liberia.

MONEY AND BANKING

1.10b Central Bank of Liberia Fx Auction -2010

Auction No.	Date	FX Offered for sale by CBL (US\$)	Auction Rate L\$/US	Total Purchased US\$	No. of Accepted Bids	No. of Rejected Bids	Value of Rejected Bids (US\$)	Over/(Under) Subscription (US\$)	Total Value of Bids Submitted by Participating Banks/FX Bureaux (US\$)
Special Window	4-Jan-10	600,000.00	68	600,000.00	-	-	-	-	600,000.00
189	6-Jan-10	1,700,000.00	69.0000	1,700,000.00	25	1	29,000	(29,000)	1,729,000.00
190	13-Jan-10	1,500,000.00	70.00	1,500,000.00	26	1	209,456.04	(209,456.04)	1,709,456.04
191	20-Jan-10	750,000.00	70.50	750,000.00	18	2	353,000.00	(353,000.00)	1,103,000.00
192	27-Jan-10	500,000.00	71.50	500,000.00	13	11	658,438.94	(658,438.94)	1,158,438.94
193	3-Feb-10	750,000.00	71.60	750,000.00	17	5	442,169.68	(442,169.68)	1,192,169.68
194	10-Feb-10	750,000.00	71.7020	750,000.00	15	2	231,755.88	(231,755.88)	981,755.88
195	17-Feb-10	1,500,000.00	71.00	1,149,995.97	17	-	-	350,004.03	1,149,995.97
196	24-Feb-10	1,500,000.00	71.00	1,037,500.00	12	-	175,000.00	287,500.00	1,212,500.00
197	3-Mar-10	2,000,000.00	71.00	2,000,000.00	22	4	505,596.92	(505,596.92)	2,505,596.92
198	11-Mar-10	2,500,000.00	70.75	1,455,000.00	15	1	50,000.00	995,000.00	1,505,000.00
199	17-Mar-10	2,500,000.00	70.60	1,475,000.00	15	-	-	1,025,000.00	1,475,000.00
Special Window	19-Mar-10	1,000,000.00	71.00	1,000,000.00	-	-	-	-	1,000,000.00
200	24-Mar-10	1,500,000.00	70.50	1,267,000.00	18	-	-	233,000.00	1,267,000.00
Special Window	26-Mar-10	233,000.00	71.00	233,000.00	0	-	-	-	233,000.00
201	31-Mar-10	1,500,000.00	70.50	1,481,338.02	14	-	-	18,661.98	1,481,338.02
Special Window	2-Apr-10	500,000.00	71.00	500,000.00	-	-	-	-	500,000.00
Special Window	5-Apr-10	374,771.73	70.00	374,771.73	-	-	-	-	374,771.73
202	7-Apr-10	1,500,000.00	70.00	1,125,228.27	16	-	-	374,771.73	1,125,228.27
203	14-Apr-10	1,430,000.00	70.00	1,430,000.00	16	-	-	-	1,430,000.00
204	21-Apr-10	1,500,000.00	70.00	1,500,000.00	13	-	-	70,000.00	1,500,000.00
205	28-Apr-10	1,000,000.00	69.9900	552,415.03	12	-	-	447,585.00	552,415.00
Special Window	29-Apr-10	447,584.97	70.0000	447,584.97	-	-	-	-	447,584.97
206	5-May-10	500,000.00	70.2000	500,000.00	11	3	305,000.00	(305,000.00)	805,000.00
207	12-May-10	500,000.00	70.4000	500,000.00	19	4	444,000.00	(444,000.00)	944,000.00
208	26-May-10	500,000.00	70.9000	500,000.00	19	4	360,850.00	(360,850.00)	860,850.00
209	2-Jun-10	500,000.00	71.6000	500,000.00	10	13	522,000.00	(522,000.00)	1,022,000.00
210	9-Jun-10	500,000.00	71.8880	500,000.00	9	11	671,500.00	(671,500.00)	1,171,500.00
211	16-Jun-10	500,000.00	71.9999	500,000.00	9	9	520,500.00	(520,500.00)	1,020,500.00
212	23-Jun-10	500,000.00	72.2711	500,000.00	13	11	608,902.74	(608,902.74)	1,108,902.74
213	30-Jun-10	1,000,000.00	72.4000	1,000,000.00	26	8	719,240.00	(719,240.00)	1,719,240.00
Total		32,035,356.70		28,078,833.99	400	90	6,806,410.20	(2,779,887.46)	34,885,244.16

Source : Central Bank of Liberia, Monrovia, Liberia.

MONEY AND BANKING

1.10b Central Bank of Liberia Fx Auction -2010 (continued)

Auction No.	Date	FX Offered for sale by CBL (US\$)	Auction Rate L\$/US	Total Purchased US\$	No. of Accepted Bids	No. of Rejected Bids	Value of Rejected Bids (US\$)	Over/(Under) Subscription (US\$)	Total Value of Bids Submitted by Participating Banks/FX Bureaux (US\$)
214	7-Jul-10	1,000,000.00	72.1999	1,000,000.00	17	3	392,885.00	(392,885.00)	1,392,885.00
215	14-Jul-10	500,000.00	72.4000	500,000.00	12	9	459,127.20	(459,127.00)	959,127.00
216	21-Jul-10	500,000.00	72.5999	500,000.00	10	7	350,000.00	(350,000.00)	850,000.00
217	28-Jul-10	500,000.00	72.7000	500,000.00	12	11	467,000.00	(467,000.00)	967,000.00
218	4-Aug-10	500,000.00	72.8999	500,000.00	10	8	320,000.00	(320,000.00)	820,000.00
219	11-Aug-10	750,000.00	72.6000	750,000.00	12	5	250,000.00	(110,980.00)	860,980.00
220	18-Aug-10	750,000.00	71.9999	300,000.00	6	15	728,250.00	(278,250.00)	1,028,250.00
221	25-Aug-10	750,000.00	71.7500	750,000.00	18	3	253,350.00	(253,350.00)	1,003,350.00
222	1-Sep-10	600,000.00	71.0000	600,000.00	9	10	434,000.00	(434,000.00)	1,034,000.00
223	8-Sep-10	500,000.00	71.2800	500,000.00	9	12	557,500.00	(557,500.00)	1,057,500.00
224	15-Sep-10	500,000.00	71.5000	500,000.00	13	3	210,000.00	(210,000.00)	710,000.00
225	22-Sep-10	500,000.00	71.8111	500,000.00	11	11	444,000.00	(444,000.00)	944,000.00
226	29-Sep-10	500,000.00	72.0000	500,000.00	15	5	350,000.00	(350,000.00)	850,000.00
227	6-Oct-10	750,000.00	71.0000	750,000.00	17	-	10,990.00	(10,990.00)	760,990.00
228	13-Oct-10	750,000.00	71.3310	750,000.00	12	6	268,500.00	(268,500.00)	1,018,500.00
229	20-Oct-10	750,000.00	71.6999	750,000.00	11	8	388,680.00	(388,680.00)	1,138,680.00
230	27-Oct-10	500,000.00	71.8500	500,000.00	11	11	607,105.00	(607,105.00)	1,107,105.00
231	3-Nov-10	500,000.00	71.8000	500,000.00	10	7	260,485.00	(260,485.00)	760,485.00
232	10-Nov-10	500,000.00	69.5000	500,000.00	13	1	50,000.00	(106,930.00)	606,930.00
233	17-Nov-10	500,000.00	71.8000	500,000.00	10	7	260,485.00	(260,485.00)	760,485.00
234	24-Nov-10	500,000.00	68.5000	500,000.00	13	1	50,000.00	(116,000.00)	616,000.00
235	1-Dec-10	500,000.00	69.0000	500,000.00	11	8	404,045.00	(404,045.00)	904,045.00
236	8-Dec-10	500,000.00	69.0000	500,000.00	11	3	195,000.00	(195,000.00)	695,000.00
237	15-Dec-10	500,000.00	69.8000	500,000.00	13	4	229,970.00	(229,970.00)	729,970.00
238	22-Dec-10	1,000,000.00	70.5000	1,000,000.00	15	-	760,000.00	240,000.00	760,000.00
239	29-Dec-10	1,000,000.00	70.9500	1,000,000.00	14	1	50,000.00	(465,000.00)	1,465,000.00
Total		16,100,000.00		15,650,000.00	315.00	159.00	8,751,372.20	(7,700,282.00)	23,800,282.00

Source : Central Bank of Liberia, Monrovia, Liberia.

MONEY AND BANKING

1.10c Central Bank of Liberia Fx Auction - 2011

Auction No.	Date	FX Offered for sale by CBL (US\$)	Auction Rate L\$/US	Total Purchased US\$	No. of Accepted Bids	No. of Rejected Bids	Value of Rejected Bids (US\$)	Over/(Under) Subscription (US\$)	Total Value of Bids Submitted by Participating Banks/FX Bureaux (US\$)
240	5-Jan-11	1,000,000.00	71.4990	1,000,000.00	15	2	100,000.00	(535,000.00)	1,535,000.00
241	12-Jan-11	750,000.00	72.0000	750,000.00	15	1	110,000.00	(110,000.00)	860,000.00
242	19-Jan-11	1,000,000.00	72.3500	1,000,000.00	13	1	240,000.00	(240,000.00)	1,240,000.00
243	26-Jan-11	1,000,000.00	72.4000	1,000,000.00	17	1	540,000.00	(540,000.00)	1,540,000.00
244	2-Feb-11	750,000.00	72.7000	750,000.00	11	7	590,730.00	(590,730.00)	1,340,730.00
245	9-Feb-11	750,000.00	72.1000	750,000.00	13	-	180,700.00	180,700.00	930,700.00
246	16-Feb-11	750,000.00	71.9000	750,000.00	12	1	50,000.00	260,000.00	1,010,000.00
247	23-Feb-11	500,000.00	72.2000	500,000.00	11	2	100,000.00	(207,000.00)	707,000.00
248	2-Mar-11	500,000.00	71.7500	500,000.00	13	0	-	191,500.00	691,500.00
249	9-Mar-11	400,000.00	71.8599	400,000.00	10	4	260,000.00	260,000.00	660,000.00
250	16-Mar-11	400,000.00	71.9000	400,000.00	10	0	45,000.00	45,000.00	445,000.00
251	23-Mar-11	400,000.00	72.3000	400,000.00	15	6	272,700.00	272,700.00	672,700.00
252	30-Mar-11	400,000.00	72.4500	400,000.00	8	8	315,000.00	315,000.00	715,000.00
253	6-Apr-11	400,000.00	71.9000	400,000.00	9	6	290,000.00	290,000.00	690,000.00
254	13-Apr-11	400,000.00	71.8000	400,000.00	9	8	465,000.00	465,000.00	865,000.00
255	20-Apr-11	400,000.00	71.8500	400,000.00	12	4	385,000.00	385,000.00	785,000.00
256	27-Apr-11	400,000.00	72.0000	400,000.00	13	3	344,240.00	344,240.00	744,240.00
257	4-May-11	500,000.00	72.3500	500,000.00	12	8	419,387.28	419,387.28	919,387.28
258	11-May-11	500,000.00	72.1000	500,000.00	14	0	-	125,189.17	625,189.17
259	18-May-11	500,000.00	72.1000	500,000.00	11	8	-	365,600.00	865,600.00
260	25-May-11	500,000.00	72.2000	500,000.00	13	10	-	457,380.00	957,380.00
261	1-Jun-11	500,000.00	72.2500	500,000.00	12	11	-	414,860.00	914,860.00
262	8-Jun-11	750,000.00	72.3000	750,000.00	18	9	-	401,200.00	1,151,200.00
263	15-Jun-11	750,000.00	72.2000	750,000.00	20	11	46,000.00	519,774.98	1,269,774.98
264	22-Jun-11	750,000.00	72.3250	750,000.00	18	8	190,000.00	575,000.00	1,325,000.00
265	29-Jun-11	1,000,000.00	72.2500	1,000,000.00	27	1	195,000.00	275,000.00	1,275,000.00
Total		15,950,000.00		15,950,000.00	351	120	4,958,057.28	4,339,801.43	24,735,261.43

Source : Central Bank of Liberia, Monrovia, Liberia.

MONEY AND BANKING

1.10c Central Bank of Liberia Fx Auction - 2011

Auction No.	Date	FX Offered for sale by CBL (US\$)	Auction Rate L\$/US	Total Purchased US\$	No. of Accepted Bids	No. of Rejected Bids	Value of Rejected Bids (US\$)	Over/(Under) Subscription (US\$)	Total Value of Bids Submitted by Participating Banks/FX Bureaux (US\$)
266	6-Jul-11	1,000,000.00	72.3500	1,000,000.00	31	6	20,000.00	396,870.00	1,396,870.00
267	13-Jul-11	750,000.00	72.4000	750,000.00	21	3	-	200,000.00	950,000.00
268	20-Jul-11	750,000.00	72.4000	750,000.00	22	8	-	443,000.00	1,193,000.00
269	27-Jul-11	1,000,000.00	72.2500	1,000,000.00	22	-	20,000.00	90,000.00	910,000.00
270	3-Aug-11	600,000.00	72.4500	600,000.00	15	14	20,000.00	596,000.00	1,196,000.00
271	10-Aug-11	600,000.00	72.2000	600,000.00	19	5	-	372,000.00	972,000.00
272	17-Aug-11	500,000.00	72.2000	500,000.00	16	8	161,020.00	540,995.00	1,040,995.00
273	24-Aug-11	500,000.00	72.3500	500,000.00	12	9	100,000.00	415,280.00	915,280.00
274	31-Aug-11	500,000.00	72.2500	500,000.00	15	3	-	290,000.00	790,000.00
275	7-Sep-11	500,000.00	72.21	500,000.00	13	11	-	447,900.00	947,900.00
276	14-Sep-11	500,000.00	72.25	500,000.00	14	5	150,000.00	358,055.00	858,055.00
277	21-Sep-11	500,000.00	72.2889	500,000.00	13	13	50,000.00	605,000.00	1,105,000.00
278	28-Sep-11	500,000.00	72.15	500,000.00	14	2	100,000.00	149,100.00	649,100.00
279	5-Oct-11	500,000.00	72.35	500,000.00	17	0	500,000.00	433,300.00	933,300.00
280	12-Oct-11	1,000,000.00	72.0765	1,000,000.00	17	0	100,000.00	55,000.00	1,055,000.00
281	19-Oct-11	500,000.00	72.3	500,000.00	10	6	-	167,500.00	667,500.00
282	26-Oct-11	500,000.00	72.25	500,000.00	12	4	20,000.00	92,150.00	592,150.00
Total		10,700,000.00		10,700,000.00	283.00	97.00	1,241,020.00	5,652,150.00	16,172,150.00

Source : Central Bank of Liberia, Monrovia, Liberia.

REAL SECTOR

CENTRAL BANK OF LIBERIA

2.1a: Harmonized Consumer Price Index (HCPI) -2009

Function	Weight (%)	Jan	Feb	Mar	Apr	May	Jun
Food & Non-alcoholic Beverages	45.20	156.57	153.45	151.02	152.62	152.07	168.1
Alcoholic Beverages, Tobacco & Narcotics	3.03	116.57	115.16	123.34	124.94	124.02	128.2
Clothing & Footwear	7.75	141.12	138.95	135.14	132.85	142.31	148.9
Housing, Water, Electricity, Gas & other fuels	12.00	114.01	114.92	114.23	115.46	115.56	115.8
Furnishings, Household Equipment & Routine Maintenance of the House	5.25	144.44	143.78	150.85	154.01	174.60	175.3
Health	3.91	100.00	100.00	104.05	104.05	104.05	104.1
Transport	6.11	159.09	158.55	158.28	158.28	158.83	161.0
Communication	1.53	80.87	80.88	80.93	81.06	81.06	81.6
Recreation & Culture	3.85	124.45	124.48	120.56	125.42	127.17	128.2
Education	3.20	100.00	100.00	100.00	100.00	100.00	100.0
Restaurants & Hotels	4.64	121.44	133.77	134.06	134.73	237.92	244.3
Miscellaneous Goods & Services	3.53	119.65	119.70	117.94	115.80	126.73	131.8
General Index	100.00	139.22	138.22	137.30	138.36	145.18	153.80

Function	Weight (%)	Jul	Aug	Sep	Oct	Nov	Dec
Food & Non-alcoholic Beverages	45.20	171.13	176.2	175.21	169.0	166.67	159.8
Alcoholic Beverages, Tobacco & Narcotics	3.03	132.23	137.0	136.30	132.5	130.11	130.1
Clothing & Footwear	7.75	151.41	153.7	154.74	153.4	148.20	148.1
Housing, Water, Electricity, Gas & other fuels	12.00	118.28	118.1	115.75	117.7	116.92	115.9
Furnishings, Household Equipment & Routine Maintenance of the House	5.25	177.63	180.5	179.84	178.1	173.02	172.8
Health	3.91	104.05	104.1	104.05	104.1	104.05	104.1
Transport	6.11	163.47	163.5	163.47	162.9	164.28	163.7
Communication	1.53	81.73	81.9	81.83	81.7	81.31	81.3
Recreation & Culture	3.85	129.53	129.9	130.39	129.8	128.07	128.0
Education	3.20	100.00	100.0	100.00	100.0	100.00	100.0
Restaurants & Hotels	4.64	247.21	253.6	252.81	250.9	243.45	243.3
Miscellaneous Goods & Services	3.53	133.84	136.9	136.65	133.6	129.88	129.8
General Index	100.00	156.30	159.46	158.73	155.57	153.24	149.96

The Harmonized Consumer Price Index (HCPI) is an amalgamation of the Classification of Individual Consumption by Purpose (COICOP), consisting of twelve functions (major groups) together with the Monrovia Consumer Price Index (MCPI) and its weights obtained from the 1964 limited expenditure survey. The Survey sample comprised wage-earner and clerical-employee households of two or more persons with monthly income not exceeding US\$250.

Sources : Liberia Institute for Statistics & Geo-Information Services (LISGIS) and Central Bank of Liberia (CBL)

REAL SECTOR

CENTRAL BANK OF LIBERIA

2.1b: Harmonized Consumer Price Index (HCPI) 2010

Function	Weight (%)	Jan-10	Feb-10	Mar-10	Apr-10	May-10	Jun-10
Food & Non-alcoholic Beverages	45.20	171.25	163.66	167.55	165.86	170.26	170.51
Alcoholic Beverages, Tobacco & Narcotics	3.03	134.46	138.92	137.89	138.46	141.56	144.03
Clothing & Footwear	7.75	157.40	155.44	155.14	154.29	153.88	155.83
Housing, Water, Electricity, Gas & other fuels	12.00	117.00	118.65	117.63	118.79	118.56	119.23
Furnishings, Household Equipment & Routine Maintenance of the House	5.25	179.07	179.99	178.87	177.14	176.43	179.29
Health	3.91	104.05	104.05	104.05	104.05	104.05	104.05
Transport	6.11	164.55	165.36	164.55	164.80	166.18	166.18
Communication	1.53	81.76	81.82	81.79	81.68	81.60	81.80
Recreation & Culture	3.85	129.92	130.16	130.06	129.59	129.25	130.10
Education	3.20	100.00	100.00	100.00	100.00	100.00	100.00
Restaurants & Hotels	4.64	251.51	252.52	252.12	256.76	255.30	258.99
Miscellaneous Goods & Services	3.53	135.79	135.20	133.83	132.67	131.84	133.52
General Index	100.00	157.15	154.04	155.44	145.85	156.81	157.64

Function	Weight (%)	Jul-10	Aug-10	Sep-10	Oct-10	Nov-10	Dec-10
Food & Non-alcoholic Beverages	45.20	178.35	182.36	187.70	181.21	179.55	174.20
Alcoholic Beverages, Tobacco & Narcotics	3.03	142.21	140.28	139.90	140.37	144.98	148.16
Clothing & Footwear	7.75	161.38	161.75	160.61	160.91	160.58	161.23
Housing, Water, Electricity, Gas & other fuels	12.00	121.16	121.99	121.87	121.65	121.30	121.02
Furnishings, Household Equipment & Routine Maintenance of the House	5.25	188.07	188.40	187.44	170.36	167.62	169.54
Health	3.91	104.39	104.39	104.39	104.39	104.39	104.05
Transport	6.11	171.88	171.88	171.88	172.15	172.15	174.06
Communication	1.53	86.44	86.47	86.39	86.41	86.13	86.17
Recreation & Culture	3.85	130.43	130.55	130.55	131.22	130.05	130.24
Education	3.20	100.00	100.00	100.00	100.00	100.00	100.00
Restaurants & Hotels	4.64	261.18	261.68	260.17	260.75	255.75	256.49
Miscellaneous Goods & Services	3.53	134.29	135.38	134.54	134.31	130.05	130.37
General Index	100.00	162.83	164.79	166.94	163.19	161.93	159.88

The Harmonized Consumer Price Index (HCPI) is an amalgamation of the Classification of Individual Consumption by Purpose (COICOP), consisting of twelve functions (major groups) together with the Monrovia Consumer Price Index (MCPI) and its weights obtained from the 1964 limited expenditure survey.

The Survey sample comprised wage-earner and clerical-employee households of two or more persons with monthly income not exceeding US\$250.

Sources : Liberia Institute for Statistics & Geo-Information Services (LISGIS) and Central Bank of Liberia (CBL)

REAL SECTOR

CENTRAL BANK OF LIBERIA

2.1c: Harmonized Consumer Price Index (HCPI) -2011

Function	Weight (%)	Jan-11	Feb-11	Mar-11	Apr-11	May-11	Jun-11
Food & Non-alcoholic Beverages	45.20	182.11	184.33	181.13	180.83	183.77	189.34
Alcoholic Beverages, Tobacco & Narcotics	3.03	151.75	152.23	152.49	153.59	154.17	156.16
Clothing & Footwear	7.75	164.90	165.00	164.76	167.08	168.16	168.40
Housing, Water, Electricity, Gas & other fuels	12.00	122.33	121.50	122.88	125.47	126.63	126.57
Furnishings, Household Equipment & Routine Maintenance of the House	5.25	172.80	174.43	174.09	174.44	175.44	175.62
Health	3.91	104.05	104.05	104.05	104.05	104.05	104.05
Transport	6.11	174.87	176.23	197.02	198.76	206.76	206.79
Communication	1.53	86.44	86.44	86.40	86.39	86.47	86.48
Recreation & Culture	3.85	131.35	131.36	133.68	137.75	138.07	138.13
Education	3.20	100.00	100.00	100.00	100.00	100.00	100.00
Restaurants & Hotels	4.64	261.33	261.36	261.65	261.37	262.79	266.52
Miscellaneous Goods & Services	3.53	133.31	128.26	128.80	129.59	135.39	135.86
General Index	100.00	164.61	165.53	165.61	166.29	168.69	171.48

The Harmonized Consumer Price Index (HCPI) is an amalgamation of the Classification of Individual Consumption by Purpose (COICOP), consisting of twelve functions (major groups) together with the Monrovia Consumer Price Index (MCP) and its weights obtained from the 1964 limited expenditure survey. The Survey sample comprised wage-earner and clerical-employee households of two or more persons with monthly income not exceeding US\$250.

Sources : Liberia Institute for Statistics & Geo-Information Services (LISGIS) and Central Bank of Liberia (CBL)

REAL SECTOR

CENTRAL BANK OF LIBERIA

2.1c: Harmonized Consumer Price Index (HCPD) -2011-Continued

Function	Weight (%)	Jul-11	Aug-11	Sep-11	Oct-11
Food & Non-alcoholic Beverages	45.20	206.36	210.09	200.35	207.67
Alcoholic Beverages, Tobacco & Narcotics	3.03	155.58	155.44	157.38	157.58
Clothing & Footwear	7.75	169.61	169.04	168.24	168.63
Housing, Water, Electricity, Gas & other fuels	12.00	128.85	129.56	129.25	129.23
Furnishings, Household Equipment & Routine Maintenance of the House	5.25	187.47	187.05	189.98	190.38
Health	3.91	104.05	104.05	104.05	104.05
Transport	6.11	206.38	206.30	205.3	205.49
Communication	1.53	86.51	86.47	86.42	86.44
Recreation & Culture	3.85	137.02	136.85	136.62	136.73
Education	3.20	100.00	100.00	100.00	100.00
Restaurants & Hotels	4.64	267.10	266.32	265.32	265.81
Miscellaneous Goods & Services	3.53	135.54	135.03	134.77	132.01
General Index	100.00	180.09	181.73	177.31	180.62

The Harmonized Consumer Price Index (HCPD) is an amalgamation of the Classification of Individual Consumption by Purpose (COICOP), consisting of twelve functions (major groups) together with the Monrovia Consumer Price Index (MCPI) and its weights obtained from the 1964 limited expenditure survey. The Survey sample comprised wage-earner and clerical-employee households of two or more persons with monthly income not exceeding US\$250.

Sources : Liberia Institute for Statistics & Geo-Information Services (LISGIS) and Central Bank of Liberia (CBL)

REAL SECTOR

CENTRAL BANK OF LIBERIA

2.2a: HCPI Inflation Rate -2009 (Year-on-Year)

Function	Weight (%)	Jan	Feb	Mar	Apr	May	Jun
Food & Non-alcoholic Beverages	45.20	5.21	5.92	5.84	7.36	1.61	0.56
Alcoholic Beverages, Tobacco & Narcotics	3.03	3.25	6.93	10.53	10.71	8.39	11.91
Clothing & Footwear	7.75	15.55	13.37	11.89	10.19	16.59	21.35
Housing, Water, Electricity, Gas & other fuels	12.00	-0.37	-0.14	-1.51	-0.75	-3.11	-3.37
Furnishings, Household Equipment & Routine Maintenance of the House	5.25	16.08	13.87	19.69	20.87	36.36	36.54
Health	3.91	0.00	0.00	1.99	4.05	3.70	3.01
Transport	6.11	26.28	22.78	25.23	23.91	-6.17	-6.17
Communication	1.53	-2.63	-2.50	0.39	-2.26	-2.35	1.01
Recreation & Culture	3.85	6.76	7.17	-0.66	3.31	4.47	5.96
Education	3.20	0.00	0.00	0.00	0.00	0.00	0.00
Restaurants & Hotels	4.64	-0.69	9.60	9.88	10.41	94.70	99.81
Miscellaneous Goods & Services	3.53	0.48	1.91	0.49	-1.55	10.01	12.98
General Rate of Inflation	100.00	6.39	6.95	6.94	7.80	7.72	7.55

Function	Weight (%)	Jul	Aug	Sep	Oct	Nov	Dec
Food & Non-alcoholic Beverages	45.20	0.14	-4.24	1.85	2.26	3.06	4.25
Alcoholic Beverages, Tobacco & Narcotics	3.03	14.96	22.38	20.21	16.21	14.13	13.32
Clothing & Footwear	7.75	18.56	22.66	21.46	16.48	12.76	12.31
Housing, Water, Electricity, Gas & other fuels	12.00	-2.14	-3.83	-5.56	-1.52	-2.12	-1.02
Furnishings, Household Equipment & Routine Maintenance of the House	5.25	38.76	29.09	22.55	21.20	17.94	35.35
Health	3.91	4.05	4.05	4.05	4.05	4.05	4.05
Transport	6.11	-4.74	-4.73	-3.81	-3.50	-2.14	-1.55
Communication	1.53	1.21	1.39	1.34	1.21	0.73	0.72
Recreation & Culture	3.85	4.51	4.80	5.21	4.71	3.14	3.40
Education	3.20	0.00	0.00	0.00	0.00	0.00	0.00
Restaurants & Hotels	4.64	89.56	101.61	101.03	99.50	93.72	93.64
Miscellaneous Goods & Services	3.53	14.69	14.37	15.19	13.66	10.62	10.78
General Rate of Inflation	100.00	7.33	4.90	7.98	8.18	7.78	9.71

The Harmonized Consumer Price Index (HCPI) is an amalgamation of the Classification of Individual Consumption by Purpose (COICOP), consisting of twelve functions (major groups) together the Monrovia Consumer Price Index (MCPI) and its weights, obtained from the 1964 limited expenditure survey.

The Survey sample comprised wage-earner and clerical-employee households of two or more persons with monthly income not exceeding US\$250.

Sources : Liberia Institute for Statistics & Geo-Information Services (LISGIS) and the Central Bank of Liberia (CBL)

REAL SECTOR

CENTRAL BANK OF LIBERIA

2.2b: HCPI Inflation Rate - 2010 (Year-on-Year)

Function	Weight (%)	Jan-10	Feb-10	Mar-10	Apr-10	May-10	Jun-10
Food & Non-alcoholic Beverages	45.20	9.37	6.65	10.95	8.68	11.96	1.42
Alcoholic Beverages, Tobacco & Narcotics	3.03	15.34	20.63	11.80	10.83	14.14	12.38
Clothing & Footwear	7.75	11.54	11.86	14.80	16.14	8.13	4.63
Housing, Water, Electricity, Gas & other fuels	12.00	2.62	3.25	2.97	2.88	2.60	2.95
Furnishings, Household Equipment & Routine Maintenance of the House	5.25	23.98	25.19	18.58	15.02	1.05	2.27
Health	3.91	4.05	4.05	0.00	0.00	0.00	0.00
Transport	6.11	3.43	4.30	3.96	4.12	4.62	3.20
Communication	1.53	1.10	1.16	1.06	0.76	0.66	0.29
Recreation & Culture	3.85	4.40	4.56	7.88	3.33	1.64	1.49
Education	3.20	0.00	0.00	0.00	0.00	0.00	0.00
Restaurants & Hotels	4.64	107.10	88.76	88.06	90.58	7.30	5.99
Miscellaneous Goods & Services	3.53	13.49	12.95	13.47	14.57	4.03	1.28
General Rate of Inflation	100.00	12.88	11.45	13.21	11.92	8.01	2.50

Function	Weight (%)	Jul-10	Aug-10	Sep-10	Oct-10	Nov-10	Dec-10
Food & Non-alcoholic Beverages	45.20	4.22	3.49	7.13	7.25	7.73	8.98
Alcoholic Beverages, Tobacco & Narcotics	3.03	7.55	2.37	2.64	5.94	11.43	13.90
Clothing & Footwear	7.75	6.59	5.21	3.79	4.91	8.36	8.85
Housing, Water, Electricity, Gas & other fuels	12.00	2.43	3.34	5.28	3.36	3.74	4.42
Furnishings, Household Equipment & Routine Maintenance of the House	5.25	5.88	4.38	4.23	-4.35	-3.12	-1.90
Health	3.91	0.32	0.32	0.32	0.32	0.32	0.00
Transport	6.11	5.14	5.15	5.15	5.67	4.79	6.31
Communication	1.53	5.77	5.62	5.57	5.73	5.92	5.99
Recreation & Culture	3.85	0.70	0.50	0.12	1.11	1.55	1.72
Education	3.20	0.00	0.00	0.00	0.00	0.00	0.00
Restaurants & Hotels	4.64	5.65	3.20	2.91	3.92	5.05	5.41
Miscellaneous Goods & Services	3.53	0.33	-1.12	-1.55	0.50	0.13	0.43
General Rate of Inflation	100.00	4.18	3.34	5.17	4.89	5.67	6.61

The Harmonized Consumer Price Index (HCPI) is an amalgamation of the Classification of Individual Consumption by Purpose (COICOP), consisting of twelve functions (major groups) together the Monrovia Consumer Price Index (MCPI) and its weights, obtained from the 1964 limited expenditure survey. The Survey sample comprised wage-earner and clerical-employee households of two or more persons with monthly income not exceeding US\$250.

Sources : Liberia Institute for Statistics & Geo-Information Services (LISGIS) and the Central Bank of Liberia (CBL)

REAL SECTOR

CENTRAL BANK OF LIBERIA

2.2c: HCPI Inflation Rate - 2011 (Year-on-Year)

Function	Weight (%)	Jan-11	Feb-11	Mar-11	Apr-11	May-11	Jun-11
Food & Non-alcoholic Beverages	45.20	6.34	12.63	8.11	9.03	7.94	11.04
Alcoholic Beverages, Tobacco & Narcotics	3.03	12.86	9.58	10.59	10.92	8.90	8.42
Clothing & Footwear	7.75	4.77	6.15	6.20	8.29	9.28	8.07
Housing, Water, Electricity, Gas & other fuels	12.00	4.56	2.40	4.47	5.62	6.80	6.15
Furnishings, Household Equipment & Routine Maintenance of the House	5.25	-3.50	-3.09	-2.68	-1.52	-0.56	-2.05
Health	3.91	0.00	0.00	0.00	0.00	0.00	0.00
Transport	6.11	6.27	6.57	19.74	20.61	24.42	24.44
Communication	1.53	5.73	5.65	5.64	5.77	5.97	5.72
Recreation & Culture	3.85	1.10	0.92	2.78	6.30	6.82	6.17
Education	3.20	0.00	0.00	0.00	0.00	0.00	0.00
Restaurants & Hotels	4.64	3.91	3.50	3.78	1.79	2.94	2.91
Miscellaneous Goods & Services	3.53	-1.83	-5.13	-3.76	-2.32	2.69	1.75
General Rate of Inflation	100.00	4.74	7.45	6.54	7.39	7.58	8.78

The Harmonized Consumer Price Index (HCPI) is an amalgamation of the Classification of Individual Consumption by Purpose (COICOP), consisting of twelve functions (major groups) together the Monrovia Consumer Price Index (MCPI) and its weights, obtained from the 1964 limited expenditure survey. The Survey sample comprised wage-earner and clerical-employee households of two or more persons with monthly income not exceeding US\$250.

Sources : Liberia Institute for Statistics & Geo-Information Services (LISGIS) and Central Bank of Liberia (CBL)

REAL SECTOR

2.2c: HCPI Inflation Rate - 2011 (Year-on-Year) -Continued

Function	Weight (%)	Jul-11	Aug-11	Sep-11	Oct-11
Food & Non-alcoholic Beverages	45.20	15.71	15.21	6.74	14.60
Alcoholic Beverages, Tobacco & Narcotics	3.03	9.40	10.81	12.49	12.26
Clothing & Footwear	7.75	5.10	4.51	4.75	4.80
Housing, Water, Electricity, Gas & other fuels	12.00	6.34	6.21	6.06	6.23
Furnishings, Household Equipment & Routine Maintenance of the House	5.25	-0.31	-0.72	1.36	11.75
Health	3.91	-0.32	-0.32	-0.32	-0.32
Transport	6.11	20.08	20.02	19.44	19.37
Communication	1.53	0.08	0.00	0.03	0.04
Recreation & Culture	3.85	5.05	4.83	4.65	4.20
Education	3.20	0.00	0.00	0.00	0.00
Restaurants & Hotels	4.64	2.26	1.78	1.98	1.94
Miscellaneous Goods & Services	3.53	0.94	-0.26	0.18	-1.72
General Rate of Inflation	100.00	10.60	10.27	6.21	10.68

The Harmonized Consumer Price Index (HCPI) is an amalgamation of the Classification of Individual Consumption by Purpose (COICOP), consisting of twelve functions (major groups) together the Monrovia Consumer Price Index (MCPI) and its weights, obtained from the 1964 limited expenditure survey. The Survey sample comprised wage-earner and clerical-employee households of two or more persons with monthly income not exceeding US\$250.

Sources : Liberia Institute for Statistics & Geo-Information Services (LISGIS) and Central Bank of Liberia (CBL)

REAL SECTOR

CENTRAL BANK OF LIBERIA

2.3a: Key Output Volume - 2009

Commodity	Unit	Jan-09	Feb-09	Mar-09	Apr-09	May-09	Jun-09	Jan-Jun Total
Agriculture								
Rubber	Mt.	5,138	6,940	5,865	6,088	2,258	5,014	31,303
Cocoa Beans	Mt.	-	-	-	-	-	-	-
Coffee	Mt.	-	-	-	-	-	-	-
Round Logs	M ³	-	-	-	-	-	-	-
Sawn Timber	Pcs.	48,799	53,559	77,399	87,430	108,651	80,537	456,375
Fish	Kg.	-	-	-	-	-	-	-
Mining								
Gold	Ounces	1,525	1,758	1,623	1,636	1,892	1,624	10,058
Diamond	Carat	792	498	231	1,008	1,925	4,786	9,242
Manufacturing								
Cement	Mt.	6,216	8,282	7,941	9,658	11,118	5,676	48,891
Spirit	Litre	53,495	49,401	55,469	89,258	74,197	79,612	401,432
Beer	Litre	797,361	425,554	718,560	930,227	503,966	666,534	4,042,202
Stout	Litre	275,172	222,101	249,021	312,642	428,258	325,076	1,812,270
Malta	Litre	137,895	35,022	86,629	67,819	70,084	160,119	557,568
Soft Drink	Litre	624,161	554,604	568,289	848,405	699,070	760,176	4,054,705
Oil Paint	Gal.	1,000	1,400	1,200	600	2,280	1,680	8,160
Water Paint	Gal.	6,500	12,600	15,500	11,250	14,450	19,500	79,800
Varnish	Gal.	250	350	300	150	570	420	2,040
Manoline Hair Grease	Kg.	4,200	3,830	5,040	4,780	4,813	8,232	30,895
Thinner	Gal.	200	150	250	125	100	425	1,250
Rubbing Alcohol	Litre	-	17,979	17,979	30,474	14,698	-	81,130
Powder Soap	Kg.	9,450	7,875	4,200	15,740	10,715	14,690	62,680
Chlorox	Litre	32,827	39,743	44,379	49,678	26,151	46,737	239,515
Nail	Kg.	-	-	-	-	-	-	-
Candle	Kg.	39,900	31,500	52,500	45,360	18,785	29,327	217,372
Mattresses	Pcs.	-	-	-	-	-	-	-
Finished Water ^{1*}	Gal.	117,065,198	127,065,198	101,898,717	120,005,395	115,359,082	110,228,628	691,622,218

1: Water from White Plains Treatment*Revised

Sources : Ministries of Planning & Economic Affairs; Lands, Mines & Energy; Commerce & Industry; and Liberia Institute of Statistics & Geo-Information Services (LISGIS); Forestry Development Authority (FDA); Liberia Produce Marketing Corporation (LPMC); Bridgeway Corporation, and Liberia Water & Sewer Corporation (LWSC), Monrovia, Liberia

REAL SECTOR

CENTRAL BANK OF LIBERIA

2.3a: Key Output Volume - 2009- continued

Commodity	Unit	Jul-09	Aug-09	Sep-09	Oct-09	Nov-09	Dec-09	Jul-Dec Total	Grand Total
Agriculture									
Rubber	Mt.	6,048.00	4,471	6,609.00	6,484	3,807.00	5,909	33,328.00	64,631
Cocoa Beans	Mt.	-	-	345	693	696	-	1,734.00	1,734
Coffee	Mt.	-	-	-	-	-	-	-	0
Round Logs	M ³	-	-	-	-	-	-	-	0
Sawn Timber	Pcs.	82,571	48,840	49,918	57,765	73,508	80,291	312,602.00	768,977.00
Fish	Kg.	-	-	-	-	-	-	-	-
Mining									
Gold	Ounces	1,044	880	1,612	1,747	1,893	2,346	7,175.97	17,233.97
Diamond	Carat	2,614	2,908	4,329	1,382	1,247	3,287	12,480.84	21,722.84
Manufacturing									
Cement	Mt.	6,014	3,347	10,097	7,759	5,283	4,129	32,500.00	81,391.00
Spirit	Litre	81,730	79,986	109,091	96,001	101,898	86,576	468,706.00	870,138.00
Beer	Litre	680,860	549,148	792,317	413,662	737,246	742,140	3,173,233.00	7,215,435.00
Stout	Litre	321,045	209,254	297,150	120,685	271,363	369,912	1,219,497.00	3,031,767.00
Malta	Litre	50,078	34,555	-	-	88,506	104,766	277,905.00	835,473.00
Soft Drink	Litre	848,153	255,708	961,682	806,909	1,124,273	1,120,781	3,996,725.00	8,051,430.00
Oil Paint	Gal.	2,000	1,600	2,400	3,600	2,840	3,200	12,440.00	20,600.00
Water Paint	Gal.	15,750	17,000	12,600	20,200	24,750	34,000	90,300.00	170,100.00
Varnish	Gal.	500	400	600	900	710	800	3,110.00	5,150.00
Manoline Hair Grease	Kg.	5,216	-	-	-	-	-	5,216.00	36,111.00
Thinner	Gal.	500	350	350	1,000	1,215	850	3,415.00	4,665.00
Rubbing Alcohol	Litre	19,552	22,384	-	-	-	72,095	41,936.00	123,066.00
Powder Soap	Kg.	25,568	121,133	-	-	-	-	146,701.00	209,381.00
Chlorox	Litre	53,016	43,796	-	-	61,389	44,697	158,201.00	397,716.00
Nail	Kg.	-	-	-	-	-	-	-	-
Candle	Kg.	11,655	26,954	-	-	20,790	24,990	59,399.00	276,771.00
Mattresses	Pcs.	8,901	5,125	7,649	7,940	5,890	9,234	44,739.00	44,739.00
Finished Water ¹	Gal.	94,509,853	98,276,165	104,268,564	109,589,265	101,242,801	107,232,210	507,886,648.00	1,199,508,866.09

1: Water from White Plains Treatment Plant

Sources : Lands, Mines & Energy; Commerce & Industry; Forestry Development Authority (FDA);
Liberia Produce Marketing Corporation (LPMC) and Liberia Water & Sewer Corporation (LWSC), Monrovia, Liberia

REAL SECTOR

CENTRAL BANK OF LIBERIA

2.3b: Key Output Volume - 2010

Commodity	Unit	Jan-10	Feb-10	March-10	April-10	May-10	June-10	Jan-Jun Total
Agriculture								
Rubber	Mt.	6,387.35	4,020	3,053.40	2,390.60	5,674.00	4,334.40	25,859.30
Cocoa Beans	Mt.	345	693	696.00	720.00	420.00	225.00	3,099.00
Coffee	Mt.	-	-	-	17.00	162.00	162.00	341.00
Round Logs	M ³	-	-	-	-	-	-	-
Sawn Timber	Pcs.	50,506	57,765	73,508.00	56,215.00	47,959.00	39,861.00	325,814.00
Fish	Kg.	-	-	-	-	-	-	-
Mining								
Gold	Ounces	1,772	1,747	1,893.00	2,654.06	2,050.24	1,588.18	11,704.48
Diamond	Carat	2,291	1,382	1,247.49	1,644.91	1,271.34	1,999.16	9,835.90
Manufacturing								
Cement	Mt.	10,097	7,759	5,283.00	10,121.00	6,929.00	9,204.00	49,393.00
Spirit	Litre	109,091	96,001	101,898.00	72,283.00	74,067.30	78,598.35	531,938.00
Beer	Litre	792,317	413,662	737,246.00	872,191.88	850,896.52	192,616.56	3,858,929.96
Stout	Litre	297,150	120,685	271,363.00	377,839.44	275,164.56	165,488.40	1,507,690.40
Malta	Litre	-	-	88,506.00	178,683.12	-	-	-
Soft Drink	Litre	961,682	806,909	1,124,273.00	1,259,222.40	864,273.60	953,359.20	5,969,719.20
Oil Paint	Gal.	2,400	3,600	2,840.00	4,200.00	5,520.00	4,652.00	23,212.00
Water Paint	Gal.	12,600	20,200	24,750.00	29,125.00	31,920.00	33,650.00	152,245.00
Varnish	Gal.	600	900	710.00	1,050.00	1,380.00	1,163.00	5,803.00
Manoline Hair Grease	Kg.	16,842	6,560	4,704.00	15,834.00	2,679.60	3,360.00	49,980.00
Thinner	Gal.	350	1,000	1,215.00	1,500.00	1,200.00	1,850.00	7,115.00
Rubbing Alcohol	Litre	22,473	44,947	35,957.50	429,782.02	26,473.71	34,429.31	594,062.85
Powder Soap	Kg.	17,897	14,469	14,222.25	-	11,250.75	4,520.25	62,359.25
Chlorox	Litre	62,661	32,032	106,006.50	56,089.92	79,696.96	91,381.26	427,867.76
Nail	Kg.	-	-	-	-	-	-	-
Candle	Kg.	40,845	25,085	66,979.50	48,331.50	54,064.50	41,968.50	277,273.50
Mattresses	Pcs.	8,015	8,623	9,076.00	10,725.00	12,990.00	11,857.00	61,286.00
Finished Water ¹	Gal.	112,144,261	114,185,239	99,883,839.35	130,694,247.20	108,343,202.40	108,345,412.80	673,596,202.57

1: Water from White Plains Treatment Plant

Sources : Lands, Mines & Energy; Commerce & Industry; Forestry Development Authority (FDA);
Liberia Produce Marketing Corporation (LPMC) and Liberia Water & Sewer Corporation (LWSC), Monrovia, Liberia

REAL SECTOR

CENTRAL BANK OF LIBERIA

2.3b: Key Output Volume - 2010 (continued)

Commodity	Unit	Jul-10	Aug-10	Sep-10	Oct-10	Nov-10	Dec-10	Jul-Dec Total	Grand Total
Agriculture									
Rubber	Mt.	6,048.00	4,471.00	6,609.00	6,484.00	8,131.00	4,974.00	36,717.00	62,576.30
Cocoa Beans	Mt.	240.00	428.00	478.00	648.30	964.16	1,255.68	4,014.14	7,113.14
Coffee	Mt.	11.00	-	-	27.30	-	-	38.30	379.30
Round Logs	M ³	6,021.00	-	-	-	1,230.00	-	7,251.00	7,251.00
Sawn Timber	Pcs.	29,126.00	42,235.00	28,886.00	40,047.00	42,381.00	35,294.00	217,969.00	543,783.00
Fish	Kg.	-	-	-	-	-	-	-	-
Mining									
Gold	Ounces	948.00	2,172.00	2,265.00	1,355.60	1,127.96	1,828.71	9,697.27	21,401.75
Diamond	Carat	1,857.00	1,027.00	1,031.84	4,906.01	144.47	3,216.24	12,182.56	22,018.46
Manufacturing									
Cement	Mt.	5,063.00	3,039.00	4,294.00	4,025.00	3,137.00	2,782.00	22,340.00	71,733.00
Spirit	Litre	86,325.00	74,482.00	74,392.00	75,140.10	65,551.50	93,210.75	469,101.35	1,001,039.35
Beer	Litre	685,461.00	655,010.00	640,272.00	603,015.16	679,754.76	920,246.12	4,183,759.04	8,042,689.00
Stout	Litre	423,633.00	230,012.64	323,991.00	284,225.04	432,202.32	667,069.92	2,361,133.92	3,868,824.32
Malta	Litre	119,964.00	527,844.24	-	99,649.44	84,577.68	29,755.44	861,790.80	861,790.80
Soft Drink	Litre	834,250.00	829,519.20	797,026.00	804,578.40	887,616.00	1,293,091.20	5,446,080.80	11,415,800.00
Oil Paint	Gal.	960.00	2,954.00	880.00	2,600.00	2,260.00	2,440.00	12,094.00	35,306.00
Water Paint	Gal.	9,190.00	10,020.00	7,550.00	16,520.00	10,850.00	20,235.00	74,365.00	226,610.00
Varnish	Gal.	240.00	213.00	220.00	650.00	565.00	610.00	2,498.00	8,301.00
Manoline Hair Grease	Kg.	5,040.00	5,939.00	3,301.00	3,822.00	2,889.60	4,729.20	25,720.80	75,700.80
Thinner	Gal.	750.00	1,600.00	800.00	1,200.00	1,500.00	2,470.00	8,320.00	15,435.00
Rubbing Alcohol	Litre	20,945.00	44,542.00	-	45,171.61	34,339.41	4,899.21	149,897.23	743,960.08
Powder Soap	Kg.	79,042.00	70,171.00	52,434.00	60,443.10	67,882.95	49,560.75	379,533.80	441,893.05
Chlorox	Litre	15,750.00	21,546.00	21,777.00	52,963.51	62,024.80	60,355.61	234,416.91	662,284.67
Nail	Kg.	-	-	-	-	-	-	-	-
Candle	Kg.	41,748.00	51,135.00	44,457.00	53,298.00	52,594.50	58,338.00	301,570.50	578,844.00
Mattresses	Pcs.	13,750.00	11,300.00	9,889.00	7,010.00	7,290.00	11,504.00	60,743.00	122,029.00
Finished Water ¹	Gal.	102,199,432.00	120,634,490.60	110,392,375.01	122,754,200.00	125,225,220.00	153,571,663.00	734,777,380.61	1,408,373,583.18

¹: Water from White Plains Treatment Plant

Sources : Lands, Mines & Energy; Commerce & Industry; Forestry Development Authority (FDA);
Liberia Produce Marketing Corporation (LPMC) and Liberia Water & Sewer Corporation (LWSC), Monrovia, Liberia

REAL SECTOR

CENTRAL BANK OF LIBERIA

2.3c: Key Output Volume - 2011

Commodity	Unit	Jan-11	Feb-11	Mar-11	Apr-11	May-11	Jun-11	Jan-June Total
Agriculture								
Rubber	Mt.	7,255.00	19,455.00	521.00	11,813.48	5,481	5,938	50,463.45
Cocoa Beans	Mt.	2,023.00	172.00	3,742.00	3,329.00	5,941	4,106	19,313.00
Coffee	Mt.	-	-	-	-	-	154	154.00
Round Logs	M ³	10,819.00	2,629.00	3,042.00	6,725.36	2,813	10,803	36,831.36
Sawn Timber	Pcs.	27,228.00	41,540.00	48,464.00	42,968.00	50,002	28,161	238,363.00
Fish	Kg.	-	-	-	-	-	-	-
Mining								
Gold	Ounces	1,556.00	1,127.00	1,237.00	1,595.00	1,577	1,573	8,665.00
Diamond	Carat	2,210.00	2,097.00	3,206.00	558.01	4,686	5,291	18,048.01
Manufacturing								
Cement	Mt.	2,553.00	3,507.00	2,651.00	7,263.00	3,166	9,543	28,683.00
Spirit	Litre	59,544.00	52,832.00	60,873.00	58,704.21	61,647	66,489	360,089.21
Beer	Litre	616,550.00	639,543.00	841,177.00	933,970.16	894,377	955,400	4,881,017.16
Stout	Litre	309,324.00	378,774.00	438,926.00	427,299.84	401,916	492,117	2,448,356.84
Malta	Litre	98,208.00	96,188.00	62,220.00	64,088.64	132,018	101,677	554,400.08
Soft Drink	Litre	1,182,283.00	1,109,477.00	1,237,003.00	1,374,459.84	1,166,695	939,190	7,009,107.64
Oil Paint	Gal.	1,400.00	4,080.00	3,440.00	2,760.00	3,280	1,640	16,600.00
Water Paint	Gal.	13,550.00	27,750.00	19,850.00	25,688.00	14,650	16,200	117,688.00
Varnish	Gal.	350.00	1,020.00	860.00	690.00	820	410	4,150.00
Manoline Hair Grease	Kg.	5,687.00	3,637.00	4,099.00	5,686.80	2,327	3,620	25,057.00
Thinner	Gal.	2,300.00	3,500.00	3,000.00	3,125.00	2200	2500	16,625.00
Rubbing Alcohol	Litre	22,518.00	21,035.00	-	22,518.38	32,946	34,654	133,671.48
Powder Soap	Kg.	37,122.00	48,855.00	15,755.00	37,121.55	41,715	43,406	223,974.65
Chlorox	Litre	77,047.00	67,986.00	42,127.00	106,218.46	132,581	52,964	478,922.94
Nail	Kg.	-	-	-	-	-	-	0.00
Candle	Kg.	43,176.00	49,193.00	32,666.00	59,115.00	37,664	31,574	253,387.00
Mattresses	Pcs.	12,600.00	13,130.00	14,960.00	11,205.00	15,989	12,874	80,758.00
Finished Water ¹	Gal.	178,985,090.50	162,390,947.44	148,029,162.25	150,802,081.28	149,163,690	140,788,206	930,159,177.79

¹: Water from White Plains Treatment Plant

Sources : Lands, Mines & Energy; Commerce & Industry; Forestry Development Authority (FDA); Liberia Produce Marketing Corporation (LPMC) and Liberia Water & Sewer Corporation (LWSC), Monrovia, Liberia

REAL SECTOR

CENTRAL BANK OF LIBERIA

2.3c: Key Output Volume - 2011 -Continued

Commodity	Unit	Jul-11	Aug-11	Sep-11	Oct-11
Agriculture					
Rubber	Mt.	8,567	9,696	3,123	11,163
Cocoa Beans	Mt.	1,015	843	2,014	1,077
Coffee	Mt.	-	27		na
Round Logs	M ³	16,147	2,375	12,412	9,129
Sawn Timber	Pcs.	30,325	21,540		9,160
Fish	Kg.				
Mining					
Gold	Ounces	969	1,329	1,016	443
Diamond	Carat	4,526	7,849	3,410	3777
Manufacturing					
Cement	Mt.	7,429	9,557	6,413	6,637
Spirit	Litre	52,576	54,104	52,777	na
Beer	Litre	920,658	927,094	700,401	727,354
Stout	Litre	489,290	489,377	428,670	422,160
Malta	Litre	-	203,314	64,350	32,622
Soft Drink	Litre	1,100,117	950,998	796,644	na
Oil Paint	Gal.	3,440	1,200	2,096	2,150
Water Paint	Gal.	24,200	21,525	16,150	20,850
Varnish	Gal.	860	300	524	430
Manoline Hair Grease	Kg.	2,495	1,772	1,940	na
Thinner	Gal.	1,425	860	495	1800
Rubbing Alcohol	Litre	-	13,529	24,676	na
Powder Soap	Kg.	52,205	47,376	54,203	na
Chlorox	Litre	8,293	53,440	32,112	na
Nail	Kg.	-	-	-	0
Candle	Kg.	43,281	31,479	26,891	na
Mattresses	Pcs.	9,870	7,917	9,740	10,210
Finished Water ¹	Gal.	-	-	-	-

1: Water from White Plains Treatment Plant

Sources : Lands, Mines & Energy; Commerce & Industry; Forestry Development Authority (FDA);
Liberia Produce Marketing Corporation (LPMC) and Liberia Water & Sewer Corporation (LWSC), Monrovia, Liberia

REAL SECTOR

CENTRAL BANK OF LIBERIA

2.4a: Key Output Value - 2009

Liberian dollars

Commodity	Unit	Jan-09	Feb-09	Mar-09	Apr-09	May-09	Jun-09	Jan-Jun Total
Agriculture								
Rubber ^{3*}	Mt.	419,732,518	811,727,985	514,126,799	561,393,698	194,407,315	584,049,187	2,307,484,438
Cocoa Beans ⁴	Mt.	-	-	-	-	-	-	-
Coffee ⁴	Mt.	-	-	-	-	-	-	-
Round Logs ³	M ³	-	-	-	-	-	-	-
Sawn Timber ⁴	Pcs.	1,886,489	2,075,442	3,014,846	3,461,659	4,431,250	3,407,481	18,277,167
Fish ⁴	Kg.	-	-	-	-	-	-	-
Mining⁴								
Gold	Ounces	63,907,972	80,681,591	74,789,457	73,561,123	90,932,136	78,614,719	462,486,998
Diamond	Carat	50,158,122	21,399,746	11,146,896	132,128,828	139,011,974	63,869,174	417,714,739
Manufacturing⁴								
Cement	Mt.	75,705,659	100,961,721	92,279,820	113,944,022	142,699,419	74,900,382	600,491,023
Spirit	Litre	3,317,250	3,202,250	-	-	5,177,250	5,403,500	17,100,250
Beer	Litre	49,838,615	64,053,595	77,246,015	107,018,865	59,271,405	85,615,115	443,043,610
Stout	Litre	28,261,250	44,033,750	47,995,000	54,870,250	75,161,470	62,388,400	312,710,120
Malta	Litre	6,580,935	8,106,255	9,364,815	8,092,035	8,362,305	21,935,445	62,441,790
Soft Drink	Litre	34,532,460	35,086,110	43,443,840	44,569,150	42,513,220	40,831,050	240,975,830
Oil Paint	Gal.	673,398	1,205,441	857,463	514,098	2,012,852	1,524,869	6,788,121
Water Paint	Gal.	1,458,659	1,758,688	2,435,672	4,238,837	5,590,521	7,861,732	23,344,109
Varnish	Gal.	168,350	301,360	214,366	128,525	503,213	381,217	1,697,031
Manoline Hair Grease	Kg.	378,907	465,948	354,463	711,828	488,952	226,915	2,627,013
Thinner	Gal.	62,274	69,409	124,313	82,388	67,910	296,735	703,029
Rubbing Alcohol	Litre	306,734	261,548	235,660	210,912	507,457	161,459	1,683,770
Powder Soap	Kg.	683,064	496,650	749,826	693,538	987,921	601,150	4,212,149
Chlorox	Litre	742,671	736,913	1,252,631	767,687	842,933	1,006,426	5,349,261
Nail	Kg.	-	-	-	-	-	-	-
Candle	Kg.	2,065,946	2,484,806	2,791,560	1,587,113	2,211,829	3,589,446	14,730,700
Mattresses	Pcs.	-	-	-	-	-	-	-
Finished Water ²	Gal.	14,505,894	14,561,715	14,703,689	18,296,154	18,285,075	17,417,385	97,769,912

1. Water from drilled wells
2. Water from White Plains Treatment Plant.
3. Represents Export values
4. Represents quantity sold, not quantity produced

Sources : *Lands, Mines & Energy; Commerce & Industry; Forestry Development Authority (FDA); Liberia Produce Marketing Corporation (LPMC) and Liberia Water & Sewer Corporation (LWSC), Monrovia, Liberia*

REAL SECTOR

CENTRAL BANK OF LIBERIA

2.4a: Key Output Value - 2009-continued

Liberian dollars

Commodity	Unit	Jul-09	Aug-09	Sep-09	Oct-09	Nov-09	Dec-09	Jul-Dec Total	Grand Total
Agriculture									
Rubber ^{3*}	Mt.	726,435,810	850,991,962	502,985,574	1,012,149,091	512,441,397	828,279,485	4,433,283,319	6,740,767,757
Cocoa Beans ⁴	Mt.	-	-	49,217,700.00	99,487,080.00	49,397,100.00	-	198,101,880.00	198,101,880
Coffee ⁴	Mt.	-	-	-	-	-	-	-	-
Round Logs ³	M ³	-	-	-	-	-	-	-	-
Sawn Timber ⁴	Pcs.	3,538,846	2,140,853	2,216,534	2,380,153	3,157,248	3,076,852	16,510,486	34,787,652
Fish ⁴	Kg.	-	-	-	-	-	-	-	-
Mining⁴									
Gold	Ounces	52,760,398	46,032,385	109,317,476	103,608,060	115,887,280	139,688,724	567,294,323	1,029,781,321
Diamond	Carat	55,064,747	37,269,855	37,650,958	44,971,268	29,118,160	88,347,306	292,422,294	710,137,033
Manufacturing⁴									
Cement	Mt.	76,539,577	43,261,950	128,919,203	99,692,443	67,699,585	50,117,761	466,230,518	1,066,721,541
Spirit	Litre	4,417,500	5,498,125	5,792,275	5,646,600	5,885,275	5,603,300	32,843,075	49,943,325
Beer	Litre	94,916,185	44,678,445	97,636,985	54,406,005	91,725,880	97,308,540	480,672,040	923,715,650
Stout	Litre	66,465,040	33,487,120	57,028,880	23,161,760	52,079,760	70,993,120	303,215,680	615,925,800
Malta	Litre	12,050,010	5,956,650	-	-	12,124,875	14,352,380	44,483,915	106,925,705
Soft Drink	Litre	39,736,810	28,190,020	52,932,140	54,739,590	68,605,190	74,369,340	318,573,090	559,548,920
Oil Paint	Gal.	1,904,058	1,738,528	2,225,496	3,359,304	2,643,103	2,820,896	14,691,385	21,479,506
Water Paint	Gal.	6,200,987	6,950,776	5,219,929	8,513,826	10,146,988	13,240,750	50,273,256	73,617,365
Varnish	Gal.	476,015	434,632	556,374	839,826	660,776	705,224	3,672,847	5,369,878
Manoline Hair Grease	Kg.	735,885	433,260	-	-	-	-	1,169,145	3,796,158
Thinner	Gal.	355,500	252,735	249,655	717,800	869,819	576,385	3,021,894	3,724,923
Rubbing Alcohol	Litre	290,799	330,361	-	-	193,910	322,606	1,137,676	2,821,446
Powder Soap	Kg.	462,861	357,440	-	-	-	-	820,301	5,032,450
Chlorox	Litre	1,438,709	935,107	-	-	940,540	1,734,410	5,048,766	10,398,027
Nail	Kg.	-	-	-	-	-	-	-	-
Candle	Kg.	1,881,306	2,115,753	-	-	4,029,188	2,681,886	10,708,133	25,438,833
Mattresses	Pcs.	20,491,325	11,084,657	13,546,754	15,612,797	11,007,362	19,412,993	91,155,888	91,155,888
Finished Water ²	Gal.	16,343,256	14,047,285	17,137,940	19,903,353	18,823,984	21,936,617	na	108,192,435

1. Water from drilled wells

2. Water from White Plains Treatment NB: Production data are collected quarterly.

3. Represents Export values

4. Represents quantity sold, not quantity produced

Sources : Lands, Mines & Energy; Commerce & Industry; Forestry Development Authority (FDA);

Liberia Produce Marketing Corporation (LPMC) and Liberia Water & Sewer Corporation (LWSC), Monrovia, Liberia

REAL SECTOR

CENTRAL BANK OF LIBERIA

2.4b: Key Output Value - 2010

Liberian dollars

Commodity	Unit	Jan-10	Feb-10	March-10	April-10	May-10	June-10	Jan-Jun Total
Agriculture								
Rubber ^{3*}	Mt.	1,027,906,671	766,577,381	513,626,035	293,995,210	1,226,056,077.00	631,984,627.00	4,460,146,001.00
Cocoa Beans ⁴	Mt.	49,217,700.00	99,487,080.00	49,397,100.00	101,822,400.00	59,707,200	32,251,500	391,882,980.00
Coffee ⁴	Mt.				2,404,140.00	23,029,920	23,221,080	48,655,140.00
Round Logs ³	M ³							-
Sawn Timber ⁴	Pcs.	2,088,828	2,380,153	3,157,248	2,384,978	2,045,355	1,690,308	13,746,870.30
Fish ⁴	Kg.							-
Mining⁴								
Gold	Ounces	109,317,476	103,608,060	115,887,280	162,280,898	134,207,290.26	106,674,033.65	731,975,038.24
Diamond	Carat	37,650,958	44,971,268	29,118,160	535,828,047	28,315,519	48,320,645	724,204,597.62
Manufacturing⁴								
Cement	Mt.	128,919,203	99,692,443	67,699,585	128,102,408	88,891,656	117,105,437	630,410,731.14
Spirit	Litre	5,792,275	5,646,600	5,885,275	4,420,275	4,383,875	4,338,900	30,467,200.00
Beer	Litre	97,636,985	54,406,005	91,725,880	107,849,600	107,159,425	26,862,225	485,640,120.00
Stout	Litre	57,028,880	23,161,760	52,079,760	72,514,640	52,809,360	31,760,400	289,354,800.00
Malta	Litre	-	-	12,124,875.00	24,478,685.00	-	-	36,603,560.00
Soft Drink	Litre	52,932,140	54,739,590	68,605,190	67,164,260	60,342,740	53,868,660	357,652,580.00
Oil Paint	Gal.	2,225,496	3,359,304	2,643,103	3,860,766	5,100,701	4,334,315	21,523,684.52
Water Paint	Gal.	5,219,929	8,513,826	10,146,988	11,882,816	13,134,678	13,967,229	62,865,464.83
Varnish	Gal.	556,374	839,826	660,776	965,192	1,275,175	1,083,579	5,380,921.13
Manoline Hair Grease	Kg.	567,074	366,078	386,586	594,759	207261.4612	777653.1849	2,899,411.63
Thinner	Gal.	249,655	717,800	869,819	1,060,650	852,960	1,325,895	5,076,778.50
Rubbing Alcohol	Litre	200,616	205,075	392,385	342,819	312,558	390,835	1,844,288.02
Powder Soap	Kg.	827,428	803,936	927,806	34,695	512,674	42,867	-
Chlorox	Litre	2,198,141	994,871	2,493,730	2,254,251	2,700,282	3,382,299	14,023,574.02
Nail	Kg.	-	-	-	-	0	0	-
Candle	Kg.	5,390,051	4,261,938	8,068,193	5,819,361	7,433,111	7,533,783	38,506,436.20
Mattresses	Pcs.	15,884,374.98	19,501,090.63	20,950,036.75	17,077,112.70	20,197,900	20,150,235	113,760,750.03
Finished Water ²	Gal.	129,642,251	21,187,940	18,991,377	24,550,717	27,814,728	24,120,689	246,307,701.66

1. Water from drilled wells

2. Water from White Plains Treatment Plant.

3. Represents Export values

4. Represents quantity sold, not quantity produced

NB: Production data are collected quarterly.

Sources : Lands, Mines & Energy; Commerce & Industry; Forestry Development Authority (FDA);

Liberia Produce Marketing Corporation (LPMC) and Liberia Water & Sewer Corporation (LWSC), Monrovia, Liberia

REAL SECTOR

CENTRAL BANK OF LIBERIA

2.4b: Key Output Value - 2010 (continued)

Liberian dollars

Commodity	Unit	Jul-10	Aug-10	Sep-10	Oct-10	Nov-10	Dec-10	Jul-Dec Total	Grand Total
Agriculture									
Rubber ³	Mt.	986,975,370	940,520,750	1,167,576,152	1,208,324,192.40	1,199,143,106	1,237,594,993.30	5,753,159,193.30	10,213,305,194.30
Cocoa Beans ⁴	Mt.	31,402,776	56,185,296	61,558,968	648.30	964	1,255.68	117,747,132.14	509,630,112.14
Coffee ⁴	Mt.	477,114	-	-	27.30	-	-	27.30	48,655,167.30
Round Logs ²	M ³	9,274,019	-	-	11,149,677.00	4,983,559	-	16,133,236.00	16,133,236.00
Sawn Timber ⁴	Pcs.	1,263,311.12	1,837,223	2,075,459.00	40,047.00	42,381.00	35,294.00	4,030,403.50	17,777,273.80
Fish ⁴	Kg.	-	-	-	-	-	-	-	-
Mining⁴									
Gold	Ounces	62,766,920.00	146,077,587.08	156,059,323.00	1,355.60	1,127.96	1,828.71	302,141,222.35	1,034,116,260.58
Diamond	Carat	38,241,935	15,561,267	66,738,447	4,906.01	144	3,216.24	82,307,981.02	806,512,578.64
Manufacturing⁴									
Cement	Mt.	65,514,764	39,438,623	55,225,778	4,025.00	3,137	2,782.00	94,674,344.50	725,085,075.64
Spirit	Litre	25,042,500	4,986,250	4,785,250	75,140.10	65,552	93,210.75	10,005,402.35	40,472,602.35
Beer	Litre	92,207,250	61,169,290	58,587,785	603,015.16	679,755	920,246.12	121,960,091.04	607,600,211.04
Stout	Litre	72,991,920	48,652,160	53,160,480	284,225.04	432,202	667,069.92	103,196,137.28	392,550,937.28
Malta	Litre	10,166,805	6,581,565	6,162,390	99,649.44	84,578	29,755.44	12,957,937.56	49,561,497.56
Soft Drink	Litre	53,792,695	40,479,550	44,397,575	804,578.40	1,293,091	1,293,091.20	88,267,885.80	445,920,465.80
Oil Paint	Gal.	2,775,705	2,466,334	1,544,545	2,600.00	10,850	2,440.00	4,026,769.00	25,550,453.52
Water Paint	Gal.	7,254,703	6,268,658	5,022,725	16,520.00	10,850	20,235.00	11,338,988.13	74,204,452.96
Varnish	Gal.	693,926	616,584	386,136	650.00	565	610.00	1,004,544.50	6,385,465.63
Manoline Hair Grease	Kg.	721548.8999	477687.275	525,774.00	3,822.00	2,889.60	4,729.20	1,014,902.08	3,914,313.71
Thinner	Gal.	766,997	1,078,800	746,522	1,200.00	1,500	2,470.00	1,830,492.00	6,907,270.50
Rubbing Alcohol	Litre	143,570	409,091	346,831	45,171.61	34,339	4,899.21	840,331.91	2,684,619.93
Powder Soap	Kg.	4,499,647	4,141,309	4,089,645	60,443.10	67,883	49,560.75	8,408,840.55	8,408,840.55
Chlorox	Litre	2,497,040	2,562,075	2,366,638	52,963.51	62,025	60,355.61	5,104,057.24	19,127,631.25
Nail	Kg.	-	-	-	-	-	-	-	-
Candle	Kg.	8,351,852	7,123,965	6,988,648.00	7,208,722.00	52,594.50	58,338.00	21,432,267.78	59,938,703.97
Mattresses	Pcs.	22,280,815	18,135,265	15,283,836.00	12,286,441.00	7,290.00	11,504.00	45,724,336.28	159,485,086.30
Finished Water ^{2*}	Gal.	25,442,371	27,532,390	25,237,964.33	20,949,743	23,346,197.09	26,189,803	123,256,097.78	369,563,799.44

1. Water from drilled wells
2. Water from White Plains Treatment Plant. NB: Production data are collected quarterly.
3. Represents Export values
4. Represents quantity sold, not quantity produced

Sources : *Lands, Mines & Energy; Commerce & Industry; Forestry Development Authority (FDA); Liberia Produce Marketing Corporation (LPMC) and Liberia Water & Sewer Corporation (LWSC), Monrovia, Liberia*

REAL SECTOR

CENTRAL BANK OF LIBERIA

2.4c: Key Output Value - 2011

Liberian dollars

Commodity	Unit	Jan-11	Feb-11	Mar-11	Apr-11	May-11	Jun-11	Jan-Jun Total
Agriculture								
Rubber ^{3*}	Mt.	1,065,111,275.00	1,896,180,510.00	61,564,658.00	2,717,956,750	1,771,401,160.10	49,214,088.00	7,561,428,440.70
Cocoa Beans ⁴	Mt.	366,596,250.00	31,080,400.00	673,242,648.00	599,892,510	956,034,365.00	150,419,940.00	2,777,266,113.00
Coffee ⁴	Mt.	-	-	-	-	-	-	-
Round Logs ³	M ³	11,149,677.00	4,983,559.00	4,441,356.00	9,823,248	1,029,964	NA	31,427,804.02
Sawn Timber ⁴	Pcs.	1,184,418.00	1,801,507.00	2,092,482.00	1,853,066	2,178,073	NA	9,109,546.00
Fish ⁴	Kg.	-	-	-	-	-	-	-
Mining⁴								
Gold	Ounces	88,911,020.00	84,379,293.00	96,911,491.00	127,497,677	132,079,568.69	133,975,029.41	663,754,078.98
Diamond	Carat	248463206*	58,668,536.00	108,304,038.00	14,167,692	107,521,670.35	178,383,748.09	715,508,890.92
Manufacturing⁴								
Cement	Mt.	30,725,355.00	42,078,669.00	31,667,149.00	86,662,697	38,097,554.44	115,008,418.80	344,239,843.28
Spirit	Litre	4,138,250.00	3,705,400.00	3,269,100.00	3,606,975	13,646,525.00	3,646,225.00	32,012,475.00
Beer	Litre	71,932,605.00	97,483,495.00	104,318,560.00	117,647,025	117,513,585.00	126,937,865.00	635,833,135.00
Stout	Litre	54,666,800.00	76,229,520.00	84,276,400.00	82,007,040	77,135,440.00	94,446,720.00	468,761,920.00
Malta	Litre	9,695,880.00	10,536,300.00	10,728,810.00	8,375,220	8,375,220.00	17,252,415.00	64,963,845.00
Soft Drink	Litre	67,338,000.00	70,391,160.00	78,547,650.00	77,154,630	77,154,630.00	69,559,810.00	440,145,880.00
Oil Paint	Gal.	2,465,580.00	3,274,457.00	3,106,542.00	2,727,846	3,269,299.00	1,637,130.00	16,480,854.00
Water Paint	Gal.	6,239,067.00	10,099,197.00	9,062,984.00	11,324,665	6,468,282.70	7,159,474.85	50,353,670.80
Varnish	Gal.	616,395.00	818,614.00	776,635.00	681,962	817,324.75	409,282.50	4,120,212.75
Manoline Hair Grease	Kg.	502,425.00	517,597.08	391,822.20	426,967.20	406,668.90	57,499,200.00	59,744,680.38
Thinner	Gal.	1,660,250.00	2,405,478.00	2,301,065.00	2,470,875	1,754,258.00	1,996,500.00	12,588,426.00
Rubbing Alcohol	Litre	309,031.00	219,551.00	420,426.00	705,538	497,673.00	705,538.14	2,857,757.28
Powder Soap	Kg.	4,625,790.00	3,406,195.00	3,461,636.00	2,804,758	3,322,542.91	5,019,382.50	22,640,304.01
Chlorox	Litre	2,041,056.00	1,986,616.00	1,915,378.00	3,296,021	3,922,470.15	2,437,726.50	15,599,268.11
Nail	Kg.	-	-	-	-	-	-	-
Candle	Kg.	7,850,300.00	10,061,376.00	6,735,456.00	8,729,970	8,094,958.30	7,260,726.00	48,732,786.06
Mattresses	Pcs.	21,366,882.00	25,265,446.00	33,301,257.00	23,213,839	43,104,473.54	32,057,134.76	178,309,031.96
Finished Water ^{2*}	Gal.	30,312,436.00	27,821,676.00	19,605,862.00	29,384,082	28,323,348.90	27,002,300.08	162,449,704.89

1. Water from drilled wells
 2. Water from White Plains Treatment Plant.
 3. Represents Export values
 4. Represents quantity sold, not quantity produced
- *Estimates

NB: Production data are collected quarterly.

Sources : Lands, Mines & Energy; Commerce & Industry; Forestry Development Authority (FDA);
Liberia Produce Marketing Corporation (LPMC) and Liberia Water & Sewer Corporation (LWSC), Monrovia, Liberia

REAL SECTOR

CENTRAL BANK OF LIBERIA

2.4c: Key Output Value - 2011

Liberian dollars

Commodity	Unit	Jul-11	Aug-11	Sep-11	Oct-11
Agriculture					
Rubber ³	Mt.	22,167,717.00	2,362,569,402.00	157,408,087,160.00	2,606,476,023.00
Cocoa Beans ⁴	Mt.	184,831,500.00	152,814,825.00	362,922,800.00	194,640,825.00
Coffee ⁴	Mt.		3,915,540.00	-	-
Round Logs ³	M ³	30,890,447	16,837,343	480,269	4,474,359
Sawn Timber ⁴	Pcs.	1,296,188	937,076	536,794,176	397,306
Fish ⁴	Kg.	-	-	-	-
Mining⁴					
Gold	Ounces	84,632,239.00	125,316,738.00	101,456,129.00	40,617,896.00
Diamond	Carat	121,113,483.00	101,656,244.00	58,956,492.00	73,614,279.00
Manufacturing⁴					
Cement	Mt.	89,827,308.00	115,034,360.00	76,733,341.00	79,644,929.00
Spirit	Litre	3,645,100.00	3,699,850.00	3,733,000.00	-
Beer	Litre	120,269,310.00	114,823,415.00	85,820,350.00	91,705,850.00
Stout	Litre	93,904,080.00	93,920,800.00	78,777,040.00	81,020,560.00
Malta	Litre	-	26,569,485.00	7,390,935.00	4,263,165.00
Soft Drink	Litre	55,982,720.00	4,988,360.00	47,782,460.00	-
Oil Paint	Gal.	3,445,332.00	1,196,415.00	2,077,346.00	1,709,659.00
Water Paint	Gal.	10,693,640.00	9,529,083.00	7,210,162.00	9,278,060.00
Varnish	Gal.	861,333.00	299,104.00	519,336.00	427,415.00
Manoline Hair Grease	Kg.	432,669.60	378,067.14	356,796.00	-
Thinner	Gal.	1,141,767.00	685,945.00	392,476.00	1,709,659.00
Rubbing Alcohol	Litre	177,365.00	155,897.00	390,097.00	-
Powder Soap	Kg.	5,734,693.00	3,682,602.00	3,711,147.00	-
Chlorox	Litre	1,857,602.00	1,827,252.00	1,772,808.00	-
Nail	Kg.	-	-	-	-
Candle	Kg.	6,923,442.00	6,791,287.00	4,048,013.00	-
Mattresses	Pcs.	33,035,646.00	23,710,416.00	31,075,742.00	39,099,391.00
Finished Water ^{2*}	Gal.	-	-	-	-

1. Water from drilled wells

2. Water from White Plains Treatment Plant.

3. Represents Export values

4. Represents quantity sold, not quantity produced

*Estimates

Sources : Lands, Mines & Energy; Commerce & Industry; Forestry Development Authority (FDA);

Liberia Produce Marketing Corporation (LPMC) and Liberia Water & Sewer Corporation (LWSC), Monrovia, Liberia

GOVERNMENT FINANCE

CENTRAL BANK OF LIBERIA

3.1: Government Revenue 2009-2011

Millions of Liberian Dollars

Revenue Category	2009				2011				
	Jan-Mar Actual	Apr-Jun Actual	Jul-Sep Actual	Oct-Dec Actual	Jan-Feb Actual	Mar-Apr Actual	May-Jun Actual	Jul-Aug Actual	Sep-Oct Actual
Customs and Excise	1,351.6	1,418.2	1,699.0	1,558.0	1,246.22	1,489.18	1,458.89	1,755.37	1,797.12
Direct Taxes	1,634.3	1,129.4	1,100.9	1,023.9	1,393.09	1,417.07	1,585.47	1,346.18	1,318.13
Indirect Taxes	663.3	587.9	592.5	874.9	802.71	1,376.31	710.74	685.49	463.54
FDA ¹ Levy	4.8	10.8	28.4	249.8	-	-	14.09	6.09	-
Petroleum Sales Levy	168.8	164.4	192.7	197.1	138.43	147.73	149.43	142.17	137.81
Maritime	223.5	197.0	204.3	408.4	158.37	127.43	257.00	177.63	110.66
Grant	774.8	723.4	-	-	4.91	-	2,053.06	-	-
Total	4,821.1	4,231.1	3,817.8	4,312.1	3,743.73	4,557.72	6,228.68	4,112.93	3,827.26

3.2: Government Expenditure 2009-2011

Millions of Liberian Dollars

Expenditure Category	2009				2011				
	Jan-Mar Actual	Apr-Jun Actual	Jul-Sep Actual	Oct-Dec Actual	Jan-Feb Actual	Mar-Apr Actual	May-Jun Actual	Jul-Aug Actual	Sep-Oct Actual
General Administration ²	1,378.5	1,701.5	1,636.6	1,948.6	2,037.50	3,026.29	3,284.54	1,235.35	2,908.15
Social and Community Services	1,078.6	1,269.1	916.0	1,082.8	1,131.47	1,498.30	2,507.46	541.15	1,476.35
Economic Services	189.6	204.1	246.6	210.4	126.04	289.74	412.78	76.46	224.52
GOL Special Commitment	-	-	-	-	-	-	-	-	-
Development Expenditure	-	-	-	-	-	-	-	-	-
Other Expenditures ³	560.1	1,253.5	2,208.1	1,366.5	218.01	368.34	347.88	226.31	1081.22
Total	3,206.8	4,428.2	5,007.3	4,608.3	3,513.02	5,182.67	6,552.66	2,079.27	5,690.24

1 : Forestry Development Authority (FDA)

2 : General Administration includes Security Service Sector

3 : Other Expenditures includes what was previously Development and Commitment

Source : Ministry of Finance, Monrovia, Liberia

GOVERNMENT FINANCE

CENTRAL BANK OF LIBERIA

3.3: Functional Classification of Government Expenditure 2009-2011

Millions of Liberian Dollars

Functional Classification	Jan-Jun 2009 Actual	Jul-Dec 2009 Actual	Jan-Feb 2010 Actual	March-April 2010 Actual	May-June 2010 Actual	Jul-Aug 2010 Actual	Sep-Oct 2010 Actual	Nov-Dec 2010 Actual	Jan-Feb 2011 Actual	Mar-Apr 2011 Actual	May-Jun 2011 Actual	Jul-Aug 2011 Actual	Sep-Oct 2011 Actual
General Administration *	3,080.00	3,585.20	1,757.14	1,313.50	951.84	785.20	2,217.50	2,265.36	2,037.50	3,026.29	3,284.54	1,235.35	2,908.15
National Legislature	464.90	659.60	389.98	269.10	119.83	169.00	273.90	345.30	245.75	257.68	336.58	190.14	497.92
Executive Policy	1,029.90	1,161.00	516.08	527.40	333.17	211.00	998.10	1,070.39	931.33	1,567.02	1,887.38	469.79	944.32
Internal Management Services	127.80	198.50	100.38	86.50	55.27	44.10	119.00	123.16	143.95	169.65	174.39	102.37	173.09
Protection of Person & Property	866.20	1,155.70	550.94	300.00	376.92	220.40	477.10	389.13	458.41	667.71	585.90	343.08	858.83
Foreign Affairs	257.90	296.20	131.96	47.60	39.79	9.70	66.20	150.89	97.42	184.55	200.26	25.34	133.31
Defence	333.30	114.20	67.80	82.90	26.87	130.90	108.50	186.50	160.64	179.68	100.03	104.64	300.69
Social & Community Services	2,347.70	1,998.70	1,226.15	1,011.40	1,011.35	290.70	566.60	1,395.04	1,131.47	1,498.30	2,507.46	541.15	1,476.35
Social Services	1,337.20	1,428.50	684.87	372.50	582.04	238.50	438.00	1,106.05	707.44	1,023.24	1,419.27	464.31	1,091.59
Community Services	1,010.50	570.20	541.28	638.90	429.31	52.20	128.60	288.99	424.03	475.06	1,088.19	76.84	384.76
Economic Services	393.70	457.00	149.84	192.30	245.09	86.10	107.30	243.06	126.04	289.74	412.78	76.46	224.52
Primary	186.50	135.20	76.50	64.90	32.69	15.60	30.10	51.40	43.60	150.86	163.18	23.43	54.89
Secondary	207.30	321.70	73.34	127.40	212.40	70.50	77.20	191.66	82.44	138.88	249.60	53.03	169.63
Other Expenditure	1,813.60	3,574.60	695.77	380.80	753.65	175.80	311.20	571.98	218.01	368.34	347.88	226.31	1,081.22
Development	-	-	-	-	-	-	-	-	-	-	-	-	-
Total	7,635.00	8,615.50	3,828.90	2,898.00	2,961.93	1,337.80	3,202.60	4,475.44	3,513.02	5,182.67	6,552.66	2,079.27	5,690.24

* Also includes the Security Services Sector

3.4: Summary Estimates of Liberia's Public Debt Profile and Status as at End Oct, 2011

(In Millions US\$)

External Debt	Current	Percentage Distribution
Multilateral	1052.1	26.9
Bilateral	727.9	18.6
O/W		
Paris Club	608.4	
Non-Paris Club	119.5	
Commercials	1,233.80	31.5
O/W		
Financial Institutions	1,148.00	
Suppliers' Credit	85.80	
Sub-Total	3,013.80	
Domestic Debt	903.9	23.1
Sub-Total	903.9	
Total Stock of Debt	3,917.70	100.0

Source : Ministry of Finance, Monrovia, Liberia

EXTERNAL TRADE

CENTRAL BANK OF LIBERIA

4.1: Exports and Imports 2009- October 2011

(Millions of United States Dollars)

Period	2009		2010		2011		Balance of Trade		
	Exports	Imports	Exports	Imports	Exports	Imports	2009	2010	2011
Jan	18	97.4	19.3	23.5	25.2	30.0	(79.4)	(4.2)	(4.80)
Feb	24.8	47.9	13.5	25.4	31.7	53.4	(23.1)	(11.9)	(21.70)
Mar	11.3	57.7	11.4	34.2	13.4	88.3	(46.4)	(22.8)	(74.90)
Apr	12.4	36.9	16.9	71.0	43.3	73.0	(24.5)	(54.1)	(29.70)
May	9.2	51.7	20.8	88.9	30.9	83.2	(42.5)	(68.1)	(52.30)
Jun	11.1	55.9	12.1	90.1	16.4	91.9	(44.8)	(78.0)	(75.50)
Jul	11.7	51.8	23.4	60.6	33.3	110.9	(40.1)	(37.2)	(77.60)
Aug	13.4	34.3	19.8	63.4	39.9	97.6	(20.9)	(43.6)	(57.70)
Sep	10.3	34.5	19.6	64.9	10.8	72.1	(24.2)	(45.3)	(61.30)
Oct	10.2	43.6	20.8	76.2	46.3	55.5**	(33.4)	(55.4)	
Nov	9.6	20.0	20.5	48.2			(10.4)	(27.7)	
Dec	8.0	20.0	23.9	63.3			(12.0)	(39.4)	
Total	150.0	551.7	222.0	709.7			(401.7)	(487.7)	

4.2a: Commodity Composition of Exports-2009

(Thousands of United States Dollars)

Commodity	Jan	Feb	Mar	Apr	May	Jun	Jan-Jun Total
Rubber	6,513.5	12,584.9	7,919.4	8,517.6	2,862.7	8,365.1	46,763.2
Cocoa beans	75.0	336.6	364.0	538.4	477.6	0.0	1,791.6
Coffee	0.0	0.0	0.0	0.0	0.0	7.5	7.5
Round Logs	505.9	0.0	549.8	0.0	0.0	14.6	1,070.3
Iron Ore	0.0	0.0	0.0	0.0	0.0	0.0	0.0
Diamond	778.4	331.8	171.7	722.8	2,047.0	914.8	4,966.5
Gold	991.7	1,250.9	1,152.0	1,116.1	1,339.0	1,126.0	6,975.7
Other Commodities	9,129.7	10,293.7	1,096.5	1,560.2	2,499.9	706.8	25,286.8
Total	17,994.2	24,797.9	11,253.4	12,455.1	9,226.2	11,134.7	86,861.5

Commodity	Jul	Aug	Sep	Oct	Nov	Dec	Jul-Dec Total	Grand Total
Rubber	10,217.1	11,785.0	6,996.6	7,151.8	7,551.4	2,629.0	46,330.9	93,094.1
Cocoa beans	42.50	324.00	358.38	324.15	40.00	728.89	1,817.9	3,609.5
Coffee	0.00	128.50	0.00	0.00	0.00	0.00	128.5	136.0
Round Logs	-	0.00	0.00	0.00	26.49	29.31	55.8	1,126.0
Iron Ore	300.00	0.00	0.00	630.00	0.00	0.00	930.0	930.0
Diamond	2.91	0.00	1163.21	0.00	97.99	1302.87	2,567.0	7,533.4
Gold	637.48	0.00	1196.72	0.00	1567.69	2060.00	5,461.9	12,437.6
Other Commodities	443.73	1,132.55	627.18	2095.32	318.34	1270.53	5,887.6	31,174.4
Total	11,643.71	13,370.00	10,342.09	10,201.28	9,602.0	8,020.6	63,179.6	150,041.1

**Preliminary

Source: Ministry of Commerce & Industry and Ministry of Lands, Mines and Energy, Monrovia, Liberia

EXTERNAL TRADE

CENTRAL BANK OF LIBERIA

4.2b: Commodity Composition of Exports-2010 - 2011

(Thousands of United States Dollars)

Commodity	Jan	Feb	March	April	May	June	Jan-Jun Total
Rubber	14,410.6	10,679.5	7,174.6	4,157.8	17,249.0	8,818.0	62,489.5
Cocoa beans	692.3	24.0	648.3	614.4	0.0	62.0	2,041.0
Coffee	0.0	0.0	0.0	250.0	0.0	13.6	263.6
Round Logs	0.0	23.0	0.0	506.6	0.0	773.2	1,302.8
Iron Ore	0.0	0.0	600.0	600.0	450.0	0.0	1,650.0
Gold	1,532.6	1,443.4	1,618.8	2295	1,888.1	1,488.4	10,266.3
Diamond	527.8	626.5	406.7	7,577.8	398.4	674.2	10,211.4
Other Commodities	2,166.1	671.6	908.7	873.6	772.3	253.2	5,645.6
Total	19,329.4	13,468.1	11,357.1	16,875.2	20,757.8	12,082.6	93,870.2

Commodity	Jul	Aug	Sep	Oct	Nov	Dec	Jul-Dec Total	Grand Total
Rubber	13,653.0	12,972.70	16,250.2	16,777.62	17,172.3	17,632.10	94,457.93	156,947.40
Cocoa beans	648.3	90.00	17.6	690.30	679.1	845.80	2,971.10	5,012.08
Coffee	-	-	-	-	-	-	-	263.63
Round Logs	25.0	927.03	29.4	-	441.8	-	1,423.29	2,726.07
Iron Ore	-	540.00	-	0.00	450.00	450.00	1,440.00	3,090.00
Diamond	529.00	214.64	928.86	1,394.29	161.46	1,816.53	5,044.78	15,311.07
Gold	868.3	2,014.86	2,172.0	1,397.94	1,188.3	1,932.37	9,573.72	19,785.15
Other Commodities	7,694.8	2,986.60	249.8	529.98	393.7	1,256.50	13,111.44	18,757.04
Total	23,418.4	19,745.8	19,647.9	20,790.1	20,486.7	23,933.3	128,022.26	221,892.43

4.2c: Commodity Composition of Exports-2011

(Thousands of United States Dollars)

Commodity	Jan	Feb	Mar	Apr	May	Jun	Jan-Jun Total
Rubber	14,691.2	26,233.8	855.54	37,812.4	24,436.49	1,042.52	105,071.98
Cocoa beans	1,514.1	692.3	1,862.85	1,712.3	1,512.80	1,100.93	8,395.28
Coffee	-	-	-	-	100.00	-	100.00
Round Logs	3,106.0	563.2	5,402.44	844.0	560.21	4,003.06	14,478.89
Iron Ore	0.0	0.0	450.00	0.0	0.00	5,054.45	5,504.45
Gold	1,226.4	1,167.4	1,346.74	1,773.8	1,822.04	1,845.39	9,181.68
Diamond	3,427.1	811.7	1,505.06	197.1	1,483.26	2,457.08	9,881.26
Other Commodities	1,284.8	2,213.8	1,956.73	944.6	1,014.96	933.78	8,348.65
Total	25,249.5	31,682.2	13,379.36	43,284.19	30,929.76	16,437.21	160,962.19

Commodity	Jul	Aug	Sep	Oct
Rubber	30,426.52	32,582.67	2,183.79	36,055.83
Cocoa beans	1,534.35	1,628.60	827.30	825.90
Coffee	-	-	-	-
Round Logs	238.45	1,684.22	2,255.79	239.06
Iron Ore	-	-	-	3,082.27
Gold	1,161.89	1,728.27	1,407.55	1,018.32
Diamond	1,662.73	1,401.96	817.93	561.87
Other Commodities	1,128.65	4,045.29	3,323.65	4,041.85
Total	36,152.59	43,071.01	10,816.01	45,825.10

Source: Ministry of Commerce & Industry and Ministry of Lands, Mines and Energy, Monrovia, Liberia

EXTERNAL TRADE

CENTRAL BANK OF LIBERIA

4.3a: Commodity Composition of Imports - 2009

Thousands of United States Dollars

Commodity	Jan	Feb	Mar	Apr	May	Jun	Jan-Jun Total
Food and Live Animals	41,362.7	18,238.5	9,938.2	6,464.4	16,759.8	17,857.3	110,620.9
O/w Commercial Rice	23,809.7	14,204.7	346.5	-	8,655.4	10,708.3	57,724.6
O/w Non-Commercial Rice	739.7	-	1,393.6	-	1,096.7	47.7	3,277.6
Beverage and Tobacco	2,280.2	562.2	1,790.3	1,995.7	1,224.1	1,439.3	9,291.7
Crude Materials	3,739.1	680.2	3,252.7	1,006.7	1,099.4	1,260.7	11,038.9
Mineral, Fuels, Lubricants	2,680.8	526.5	1,049.1	922.9	1,480.2	1,301.8	7,961.2
Animal and Vegetable Oil	4,551.4	312.5	547.1	3,238.6	1,880.2	253.0	10,782.7
Chemicals and Related Products	3,264.6	1,507.4	3,738.5	2,766.4	1,917.7	2,365.2	15,559.7
Manufactured Products	9,621.4	2,919.2	6,354.3	4,220.4	18,749.3	7,891.8	49,756.3
Machinery & Transport Equipment	23,840.0	14,119.6	14,609.2	9,117.8	5,875.8	13,778.6	81,341.0
Petroleum Products	2,271.3	7,018.1	12,434.4	5,335.1	1,956.4	7,806.4	36,821.8
Miscellaneous Articles ¹	3,739.2	2,059.0	3,969.8	1,870.8	800.7	1,939.9	14,379.4
Total	97,350.5	47,943.2	57,683.6	36,938.8	51,743.5	55,894.0	347,553.5

Commodity	Jul	Aug	Sep	Oct	Nov	Dec	Jul-Dec Total	Grand Total
Food and Live Animals	9,533.1	6,915.4	8,661.1	12,267.2	4,757.8	8,999.2	51,133.8	161,754.7
O/w Commercial Rice	122.4	38.3	24.9	2,587.0	168.8	4,985.3	7,926.6	65,651.2
O/w Non-Commercial Rice	104.0	70.2	578.1	858.6	-	-	1,610.9	4,888.5
Beverage and Tobacco	1,088.4	2,046.5	1,272.1	2,602.2	1,091.5	1,198.1	9,298.8	18,590.5
Crude Materials	819.2	379.0	466.1	539.1	581.2	527.1	3,311.7	14,350.6
Mineral, Fuels, Lubricants	899.3	487.9	410.3	356.7	161.7	189.0	2,504.9	10,466.1
Animal and Vegetable Oil	-	571.9	290.66	273.4	-	221.4	1,357.4	12,140.0
Chemicals and Related Products	2,711.3	2,427.2	3,094.0	2,776.6	1,436.6	1,623.7	14,069.5	29,629.2
Manufactured Products	10,820.9	3,629.3	7,091.3	6,196.4	3,778.2	2,758.7	34,274.8	84,031.1
Machinery & Transport Equipment	10,901.7	4,491.2	8,681.8	11,443.4	4,702.4	3,582.9	43,803.3	125,144.3
Petroleum Products	13,135.6	11,568.9	2,727.5	4,240.4	-	-	31,672.4	68,494.2
Miscellaneous Articles ¹	1,848.1	1,746.6	1,804.0	2,909.7	3,445.1	855.0	12,608.5	26,987.9
Total	51,757.6	34,264.0	34,498.8	43,605.0	19,954.6	19,955.2	204,035.1	551,588.6

Sources: Ministry of Commerce & Industry and Ministry of Finance, Monrovia, Liberia.

EXTERNAL TRADE

4.3b: Commodity Composition of Imports - 2010

Thousands of United States Dollars

CENTRAL BANK OF LIBERIA

Commodity	Jan	Feb	March	April	May	June	Jan-Jun Total
Food and Live Animals	7,488.2	7,013.2	13,419.18	10,537.53	20,148.72	14,442.33	73,049.13
O/w Commercial Rice	1,065.3	1,853.2	5,099.00	4,291.16	3,146.57	84.24	15,539.54
O/w Non-Commercial Rice	1,288.1	524.3	529.36	218.46	1,164.00	-	3,724.22
Beverage and Tobacco	1,454.0	1,053.7	2,030.37	2,457.08	2,075.27	1,616.31	10,686.78
Crude Materials	237.9	384.9	565.52	516.34	428.32	964.32	3,097.27
Mineral, Fuels, Lubricants	-	398.4	1,186.26	599.68	14,000.75	39,100.78	55,285.84
Animal and Vegetable Oil	-	223.4	360.68	3,763.48	710.30	73.87	5,131.74
Chemicals and Related Products	2,258.9	2,830.3	1,558.52	2,650.80	3,433.41	2,564.84	15,296.81
Manufactured Products	3,558.3	833.6	3,328.57	9,496.20	6,950.22	3,586.99	27,753.91
Machinery & Transport Equipment	7,446.0	9,884.4	6,194.68	9,137.34	21,096.81	928.69	54,687.86
Petroleum Products	-	1,162.5	3,340.84	30,878.38	16,641.44	23,776.14	75,799.30
Miscellaneous Articles ¹	1,061.5	1,634.9	2,203.23	947.89	3,446.21	3,074.31	12,368.03
Total	23,504.8	25,419.3	34,187.9	70,984.7	88,931.4	90,128.6	333,156.6

Commodity	Jul	Aug	Sep	Oct	Nov	Dec	Jul-Dec Total	Grand Total
Food and Live Animals	18,027.94	19,655.84	31,122.06	24,178.30	11,212.95	8,113.01	112,310.09	185,359.22
O/w Commercial Rice	10,042.59	9,248.40	5,851.20	6,012.42	10.61	587.79	31,753.01	47,292.54
O/w Non-Commercial Rice	502.76	946.66	30.01	-	218.39	-	1,697.83	5,422.05
Beverage and Tobacco	1,439.36	1,487.26	1,078.68	540.65	1,321.58	1,054.94	6,922.47	17,609.24
Crude Materials	646.45	353.59	408.61	310.70	781.87	440.98	2,942.20	6,039.47
Mineral, Fuels, Lubricants	1,583.87	606.01	658.60	1,008.04	566.29	4,818.06	9,240.87	64,526.71
Animal and Vegetable Oil	288.48	252.45	982.87	209.12	3,616.02	1,054.88	6,403.82	11,535.56
Chemicals and Related Products	2,540.62	3,608.06	2,648.26	2,767.85	2,353.13	2,558.92	16,476.84	31,773.65
Manufactured Products	10,584.59	8,908.42	5,880.69	7,276.81	3,604.75	6,702.09	42,957.35	70,711.26
Machinery & Transport Equipment	14,107.93	10,544.51	15,134.97	10,155.12	9,701.87	12,401.37	72,045.77	126,733.63
Petroleum Products	6,176.90	12,731.31	778.78	26,428.54	8,172.83	20,647.74	74,936.11	150,735.40
Miscellaneous Articles ¹	5,211.76	5,225.52	6,169.28	3,349.20	6,905.53	5,536.54	32,397.83	44,765.86
Total	60,607.9	63,373.0	64,862.80	76,224.3	48,236.82	63,328.53	376,633.35	709,789.99

Sources: Ministry of Commerce & Industry and Ministry of Finance, Monrovia, Liberia.

EXTERNAL TRADE

CENTRAL BANK OF LIBERIA

4.3c: Commodity Composition of Imports - 2011
Thousands of United States Dollars

Commodity	Jan	Feb	Mar	Apr	May	Jun	Jan-Jun Total
Food and Live Animals	7,185.99	26,009.04	37,988.98	17,443.76	23,913.05	11,468.15	124,008.97
O/w Commercial Rice	180.22	15,510.49	3,411.43	12,112.84	13,774.77	897.42	45,887.17
O/w Non-Commercial Rice	209.92	1,479.36	2.77	3.18	168.39	858.58	2,722.20
Beverage and Tobacco	854.02	1,893.26	1,443.04	751.94	1,262.57	1,723.57	7,928.40
Crude Materials	458.02	230.49	484.32	310.97	550.12	407.64	2,441.56
Mineral, Fuels, Lubricants	1,497.45	835.60	5,388.30	358.83	27,162.86	494.68	35,737.73
Animal and Vegetable Oil	314.66	710.49	57.78	66.57	530.65	469.76	2,149.91
Chemicals and Related Products	2,207.81	3,255.05	1,102.49	2,303.96	4,807.43	4,198.33	17,875.07
Manufactured Products	5,321.05	5,966.53	6,929.35	10,844.53	8,040.81	5,819.29	42,921.56
Machinery & Transport Equipment	6,911.49	5,931.02	11,318.43	27,850.18	14,425.47	19,919.55	86,356.14
Petroleum Products	2,015.27	6,471.25	16,963.77	11,482.88	26,529.40	38,816.22	102,278.79
Miscellaneous Articles ¹	3,260.92	2,081.35	6,664.52	1,619.32	2,548.17	8,622.09	24,796.38
Total	30,026.68	53,384.08	88,340.99	73,032.95	109,770.53	91,939.28	446,494.50

Sources: Ministry of Commerce & Industry and Ministry of Finance, Monrovia, Liberia.

Commodity	Jul	Aug	Sep	Oct
Food and Live Animals	27,005.41	24,984.34	31,462.00	42,966.26
O/w Commercial Rice	7,969.99	12,218.34	7,330.15	27,746.91
O/w Non-Commercial Rice	-	5.23	-	1.11
Beverage and Tobacco	2,373.99	2,415.04	2,539.57	2,751.71
Crude Materials	403.08	511.40	934.99	347.07
Mineral, Fuels, Lubricants	6,597.11	8,945.42	1,091.51	721.50
Animal and Vegetable Oil	1,322.06	1,320.55	20.99	227.35
Chemicals and Related Products	2,965.08	3,401.08	4,009.14	3,326.19
Manufactured Products	11,447.14	8,786.35	9,835.74	10,919.25
Machinery & Transport Equipment	31,764.45	29,045.14	6,931.20	28,795.95
Petroleum Products	23,589.03	16,046.61	12,930.03	11,029.09
Miscellaneous Articles ¹	3,479.28	2,128.50	2,300.66	3,464.27
Total	110,946.63	97,584.43	72,055.83	104,548.64

Sources: Ministry of Commerce & Industry and Ministry of Finance, Monrovia, Liberia.

EXTERNAL TRADE

CENTRAL BANK OF LIBERIA

4.4: Volume of Imports of Petroleum Products-2009- 2011

(Volume in gals.)

2009	Premium	Diesel	Kerosene	Jet fuel	Total
Jan	888,000	460,500	0	0	1,348,500
Feb	3,219,000	2,333,200	0	0	5,552,200
Mar	6,558,773	0	0	460,500	7,019,273
Apr*	2,405,000	460,500	0	800,000	3,665,500
May	451,000	728,818	0	64,000	1,243,818
Jun*	740,000	2,234,960	0	704,000	3,678,960
Jul*	1,541,050	4,808,234	0	704,000	7,053,284
Aug	3,212,094	959,682	0	576,000	4,747,776
Sep	514,670	0	0	0	514,670
Oct	1,128,500	614,000	0	480,000	2,222,500
Nov	407,000	859,600	0	32,000	1,298,600
Dec	0	0	0	0	0
Total	21,065,086	13,459,494	0	3,820,500	38,345,080

2010	Premium	Diesel	Kerosene	Jet fuel	Total
Jan	2,416,100	971,655	0	96,000	3,483,755
Feb	555,000	0	0	0	555,000
March	0	1,535,000	0	0	1,535,000
April	3,761,420	7,936,257	0	1,659,840	13,357,517
May	2,405,000	3,591,900	0	0	5,996,900
June	4,876,600	4,218,861	0	480,000	9,575,461
Jul	1,646,130	765,658	0	477,120	2,888,908
Aug	1,558,810	4,127,615	0	0	5,686,425
Sep	481,000	185,000	0	0	666,000
Oct	4,187,660	7,648,270	0	1,613,570	13,449,500
Nov	1,827,374	2,031,526	0	0	3,858,900
Dec	4,115,878	4,709,889	0	831,760	9,657,527
Total	27,830,972	37,721,632	0	5,158,290	70,710,893

2011	Premium	Diesel	Kerosene	Jet fuel	Total
Jan	-	738,076	-	-	738,076
Feb	1,480,000	1,110,000	-	-	2,590,000
Mar	2,670,593	3,168,005	-	1,097,681.22	6,936,279
Apr	4,182,856.29	-	-	-	4,182,856.29
May	4,709,021.08	5,578,676.11	-	1,294,841.64	11,582,538.83
June	7,978,638.56	4,645,656.73	-	727,492.52	13,351,787.81
Jul	2,669,547.41	5,430,753.81	-	-	8,100,301.22
Aug	1,681,442.80	3,705,720.20	-	435,926.60	5,823,089.60
Sep	-	4,267,713.20	-	405,520.00	4,673,233.20
Oct	2,093,830.00	603,793,751.84	-	138,857,417.60	744,744,999.44
Total	27,465,929	632,438,353	0	142,818,880	802,723,161

Source: Ministry of Commerce & Industry and Central Bank of Liberia