

	Jul.13	Aug.13	Sep.13	Oct.13
1 Monetary	<i>(Millions of US\$)</i>			
CBL Net Foreign Exchange Reserves Position (Including SDRs) [†]	213.6	211.4	213.9	214.9
	<i>(Millions of L\$)</i>			
Liberian Dollars in Circulation	8,244.0	8,524.6	8,513.8	8,562.2
Money Supply (M1) in L\$ only	9,074.4	9,355.0	9,636.6	9,507.8
Broad money (M2) in L\$ only	12,934.5	13,081.9	14,080.1	14,170.9
Broad money (M2) in both L\$ and US\$*	49,396.3	50,053.6	49,285.0	49,189.6
	<i>(In percent)</i>			
Liberian Dollar share of Broad Money	26.2	26.1	28.6	28.8
Interest Rates				
- Lending rate	13.5	13.2	13.5	13.5
-Average Deposit rates				
-Savings	2.0	2.0	2.0	2.0
-Time	3.0 [†]	3.0	3.0	3.0
	<i>(Millions of \$)</i>			
Commercial banks loans to private sector - US\$	308.70	311.30	310.80	309.90
Commercial banks loans to private sector - L\$	1,131.2	1,065.7	1,251.3	1,276.6
- Demand Deposits of commercial banks				
Demand deposits - US\$	324.7	322.2	300.1	298.8
Demand deposits - L\$	2,662.9	2,662.9	3,077.7	2,734.5
- Time & Savings Deposits of commercial banks				
Time & savings deposits - US\$	143.9	142.3	139.4	132.8
Time & savings deposits - L\$	3,851.3	3,718.5	4,434.9	4,654.9
- Other Deposits**				
Actual US\$ component of other deposits	1.8	0.5	0.6	0.7
Liberian \$ component of savings deposits	8.8	8.4	8.6	8.1
Remittances	<i>(Millions of US\$)</i>			
Inflows	75.6	57.6	72.8	102.6
Outflows	108.5	49.6	125.3	116.9
Netflows	-32.82 [†]	7.98	-52.51	-14.30
2 CBL's Foreign Exchange Auction	7.8	3.3	3.0	3.0
3 Exchange Rate				
End of Period	77.50	79.50	80.00	81.00
Period Average	77.06	78.61	79.64	80.57
4 Financial Soundness Indicators (FSI)	<i>(In percent)</i>			
Capital adequacy ratio (CAR)***	24.6	21.1	23.4	23.2
Non-performing Loans to Total Loans	19.3	18.9	19.1	16.7
Non-performing Loans (percentage change)	12.4	-3.1	1.5	-8.0
Returns on Assets	-1.23	-0.72	-1.00	-0.24
Returns on Equity (ROE)	-9.6	-5.43	-7.49	-1.67
Liquidity Ratio****	37.8	36.5	32.1	28.9

*US\$ converted to L\$

**Other Deposits Include Official and Manager Checks

***The Minimum Capital Adequacy Ratio is 10%

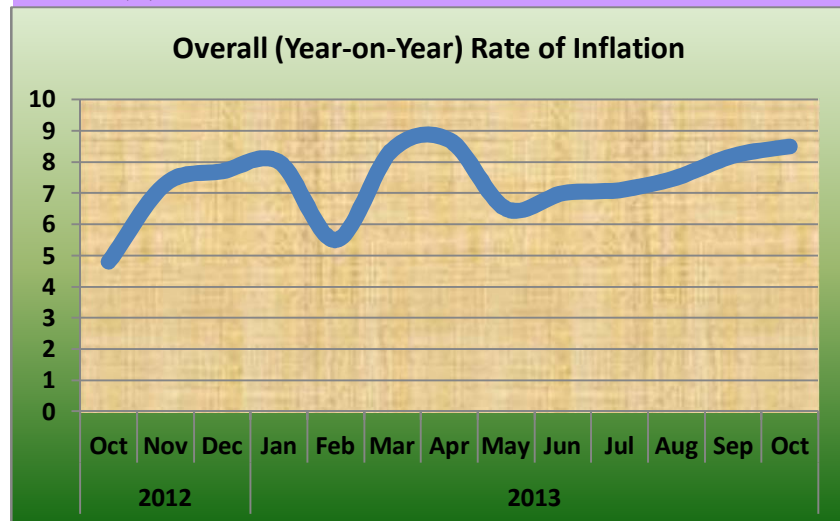
****The Required Minimum Liquidity Ratio is 15%

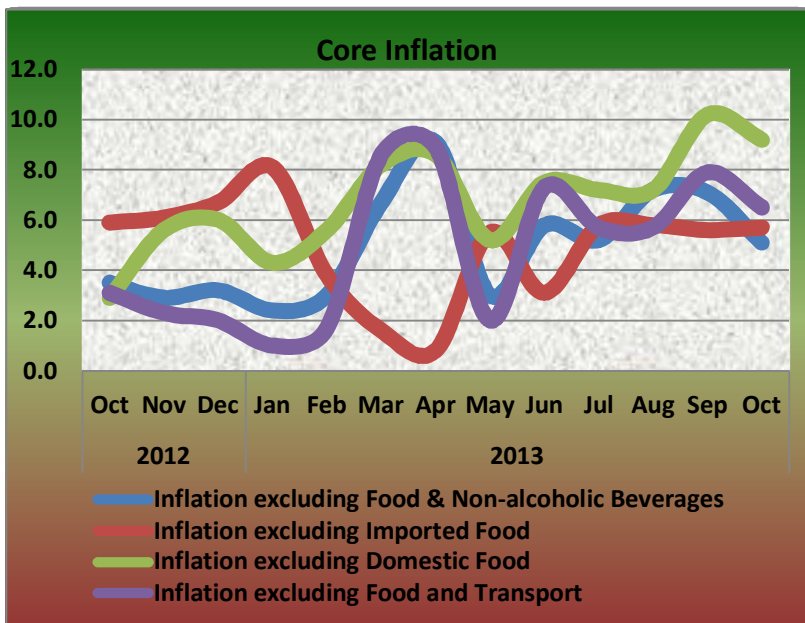
[†]Reserves exclude ECF borrowing from the IMF

	Jul.13	Aug.13	Sep.13	Oct.13
5a External Trade (Value)	<i>(Millions of US\$)</i>			
Exports	39.1	42.1	31.1	50.8
- O/w Iron Ore	27.1	17.5	17.6	39.6
- O/w Rubber	0.0	18.2	9.9	2.5
Imports	112.0	97.5	99.0	77.2
- O/w Rice				
Commercial	4.9	11.0	6.5	4.7
Non-commercial	0.0	0.0	0.0	0.0
- Petroleum Products	28.0	15.1	22.4	22.6
Trade Balance	-72.9	-55.4	-67.9	-26.4
5b External Trade (Volume)	<i>(Metric Tons)</i>			
- Rubber	-	7,656.0	5,073.2	1,108.9
-Iron Ore	491.6	331.0	255.8	555.7
- Rice Imports O/w				
Commercial	7,860.6	16,099.3	12,034.2	8,548.0
Non-commercial	0.0	0.0	0.0	0.0
- Petroleum Products	27,109.6	15,669.0	19,724.2	21,047.5
	<i>(In percent)</i>			
6 Overall (Year-on-year) Rate of Inflation	7.1	7.5	8.2	8.5
a. Food and Non-alcoholic Beverages Inflation	8.8	8.1	9.1	11.6
- Domestic Food Inflation	6.8	1.4	2.9	6.7
- Imported Food Inflation	10.8	15.7	15.9	17.0
b. Transport Inflation	2.3	2.4	2.8	-2.9
c. Imported Fuels Inflation	0.9	1.3	2.6	2.1
Core Inflation				
Inflation excluding Food & Non-alcoholic Beverages	5.2	7.2	7.1	5.1
Inflation excluding Imported Food	5.8	5.8	5.6	5.7
Inflation excluding Domestic Food	7.2	7.2	10.2	9.2
Inflation excluding Food and Transport	5.7	5.7	7.9	6.5

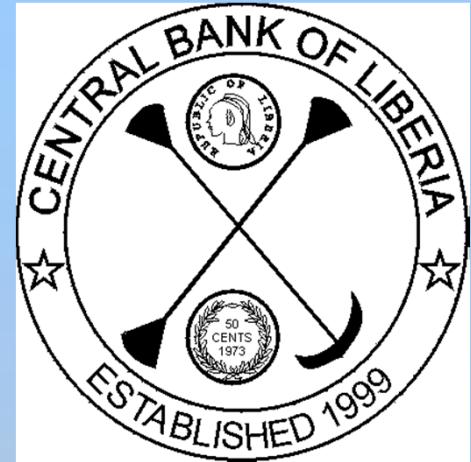
[†]Revised

[‡]Not Available (NA)





CENTRAL BANK OF LIBERIA



Fact Sheet on Key Economic and Financial Indicators

October, 2013



CENTRAL BANK OF LIBERIA

Corner of Warren and Carey Streets
 P. O. Box 2048, Monrovia
 Tel: 231-5-960557/5-960556
 Fax: (231) 770-59642
 Website: www.cbl.org.lr